

RIC 2005 – Session G3

Research Activities – New Reactors

Research Support of Licensing Decisions



David Matthews

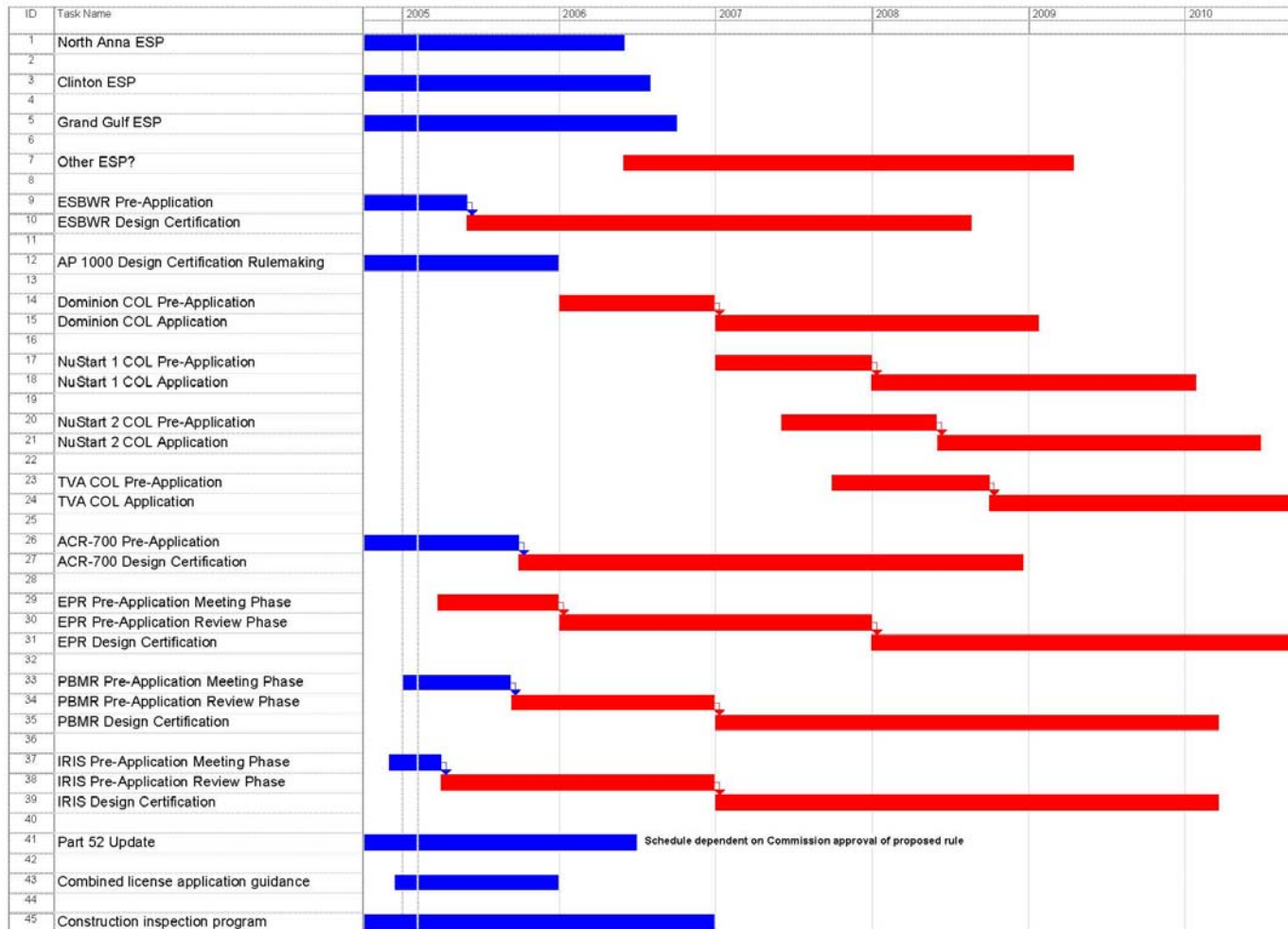
Director, Division of Regulatory Improvement Programs

March 9, 2005

New Construction Prerequisites (from the regulator's perspective)

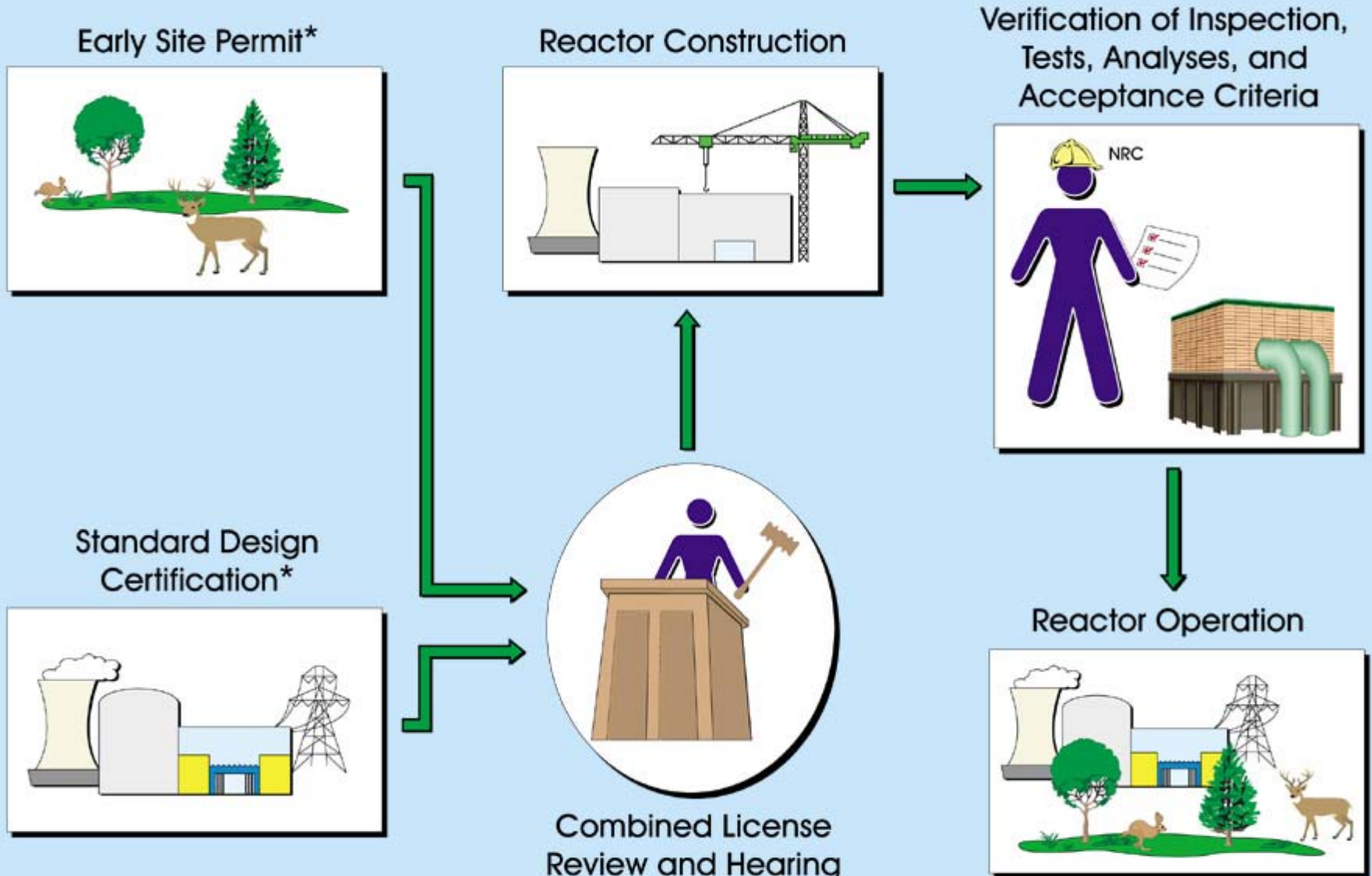
- Maintain safety of licensed plants
- Predictable licensing process
- Meaningful public participation
- Enhanced safety for future plants
- Independent and credible regulator

Current and Upcoming New Reactor Licensing Activities



Blue: current activities
Red: upcoming activities

Combined Licenses, Early Site Permits, and Standard Design Certifications



Research Support Needs

- Identification of knowledge gaps
- Analysis tools
- Confirmatory testing
- Licensing review support

How Research Helps NRC Address Regulatory Challenges

- Early site permits
 - Application of existing technical requirements to a new regulatory product
 - Little research needed
- Advanced LWR design certification
 - Research needed to develop tools for independent assessment of new features affecting plant safety
- Non-LWR design certification
 - Research is essential to understanding of unfamiliar technologies and innovative safety features