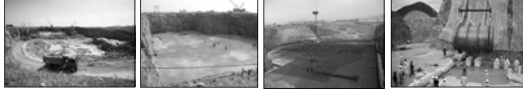


Sanmen and Haiyang Projects

- Twin AP1000™ units at each site
- Excavation started ahead of schedule
 - Sanmen: February 2008
 - Haiyang: July 2008
- Start of commercial operation:
 - Sanmen: 2013
 - Haiyang: 2014



4



Sanmen Module Assembly Area

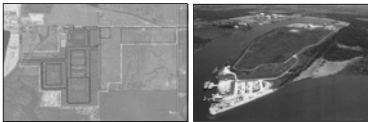


5



Inspection Preparation for Modules

- In-house fabrication and module expertise leveraged in creation of Global Modular Solutions
 - Shaw Fabrication & Manufacturing maintained ASME certification for all activities related to construction of nuclear components
 - Assembly of modules in manufacturing setting will provide consistent quality, reduce construction site activity
 - Fabrication of assemblies at one location will simplify some NRC inspection activity





6




Preparation for Construction Inspection

- Applying lessons learned from current Shaw nuclear projects
 - MOX (design, construction management)
 - LES (design)
 - China AP1000s (construction management)
- Evaluating lessons learned from first generation of nuclear construction, recent industry activity
- Flow mapping of construction installation activities, turnover and documentation processes
- Aligning construction procedures with NRC programs (including ITAAC), focus on ease of implementation




7



Preparation for Construction Inspection (cont.)

- Nuclear culture
 - Build on first NRC-approved Nuclear Quality Assurance Program
 - Continued development of Safety-Conscious Work Environment
- Construction readiness reviews
 - Develop key project milestones
 - Ensure reviews are timely and focused
 - Establish a level of confidence
 - Identify areas for improvement
 - Identify programmatic issues


8



Preparation for Construction Inspection (cont.)

- Training and qualification
 - Construction training
 - Craft skills training
 - Process certification
- New plant construction
 - Training on Part 52 and ITAAC
 - ITAAC planning and scheduling
 - ITAAC maintenance

9



Preparation for Construction Inspection (cont.)

- Teamwork and interface with AP1000™ partners
 - U.S. AP1000™ project staff taking active role in construction management and other key activities on China projects
 - Development of QA/QC programs and policies
- Need for strong interaction with on-site NRC inspector

10