

Fort Calhoun Station

Driving Through Restart

May 29, 2013

Focus Areas

- **Our accountability – Gary Gates**
- **Insights from NRC inspections – Lou Cortopassi**
- **Progress on restart issues and remaining actions – Lou Cortopassi**
- **Post-restart Plan for Sustained Improvement – Lou Cortopassi**
- **Closing remarks – Gary Gates**

Our Accountability

- **We are taking the right actions for**
 - **Safe and efficient restart**
 - **Achieving and sustaining excellence**
- **We understand and have taken action to address NRC inspection insights**
- **Board is committed to plant restart and return to excellence**

Insights from NRC Inspection

- **Areas for additional focus and continuing improvement**
 - **Documentation and completeness of the design and licensing basis**
 - **Knowledge of the design and licensing basis for engineers and operators**
 - **Completeness and timeliness of Corrective Action Program products**
 - » **Cause analyses**
 - » **Extent of condition reviews**
 - » **Corrective actions**

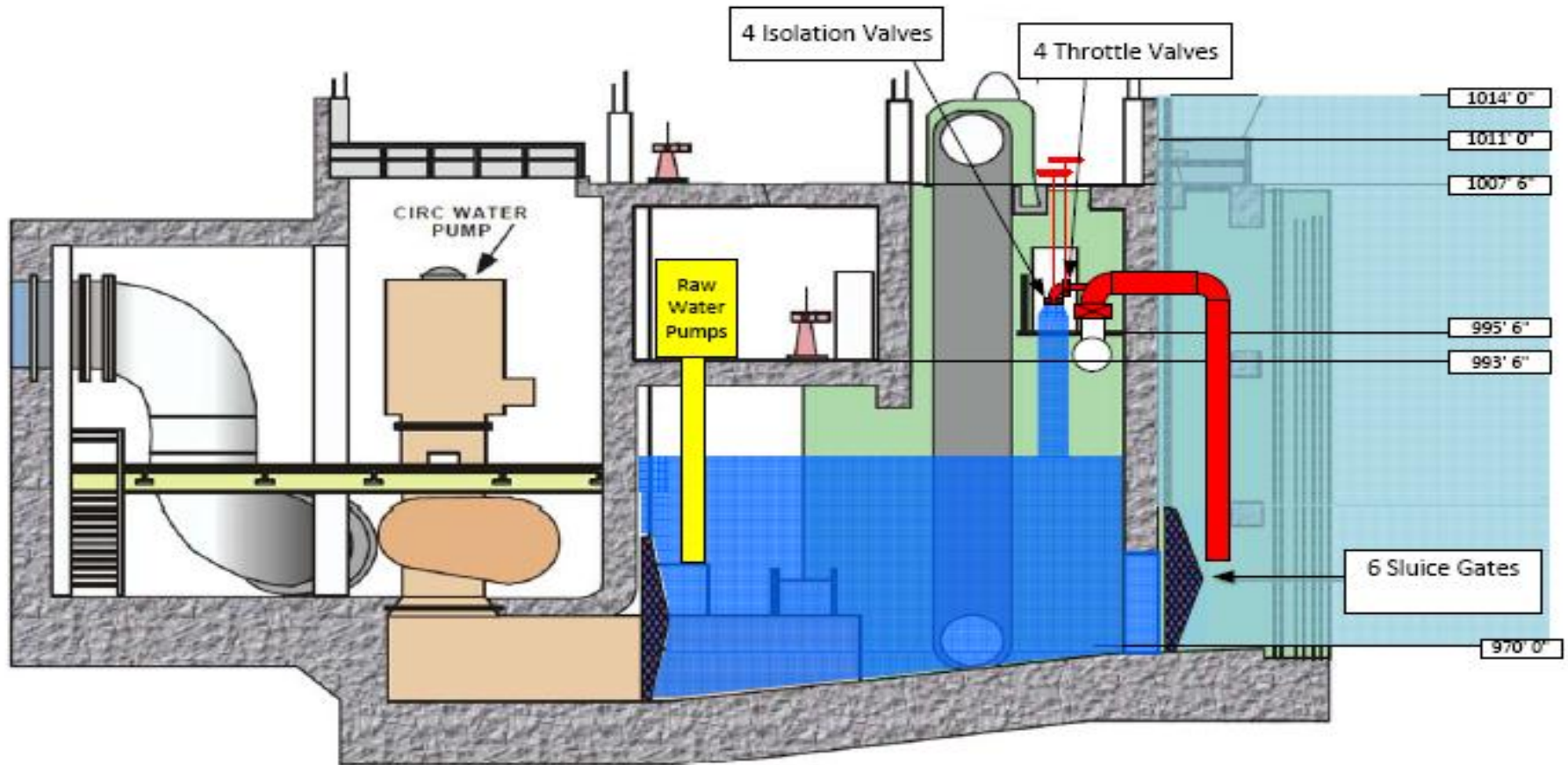
Progress on Restart Issues

- **Overarching causes addressed for restart**
 - **Organizational effectiveness**
 - **Blended leadership team effectiveness – extensive senior leader changes**
 - **Safety Culture**
 - **Corrective Action Program**
 - **Nuclear Oversight**

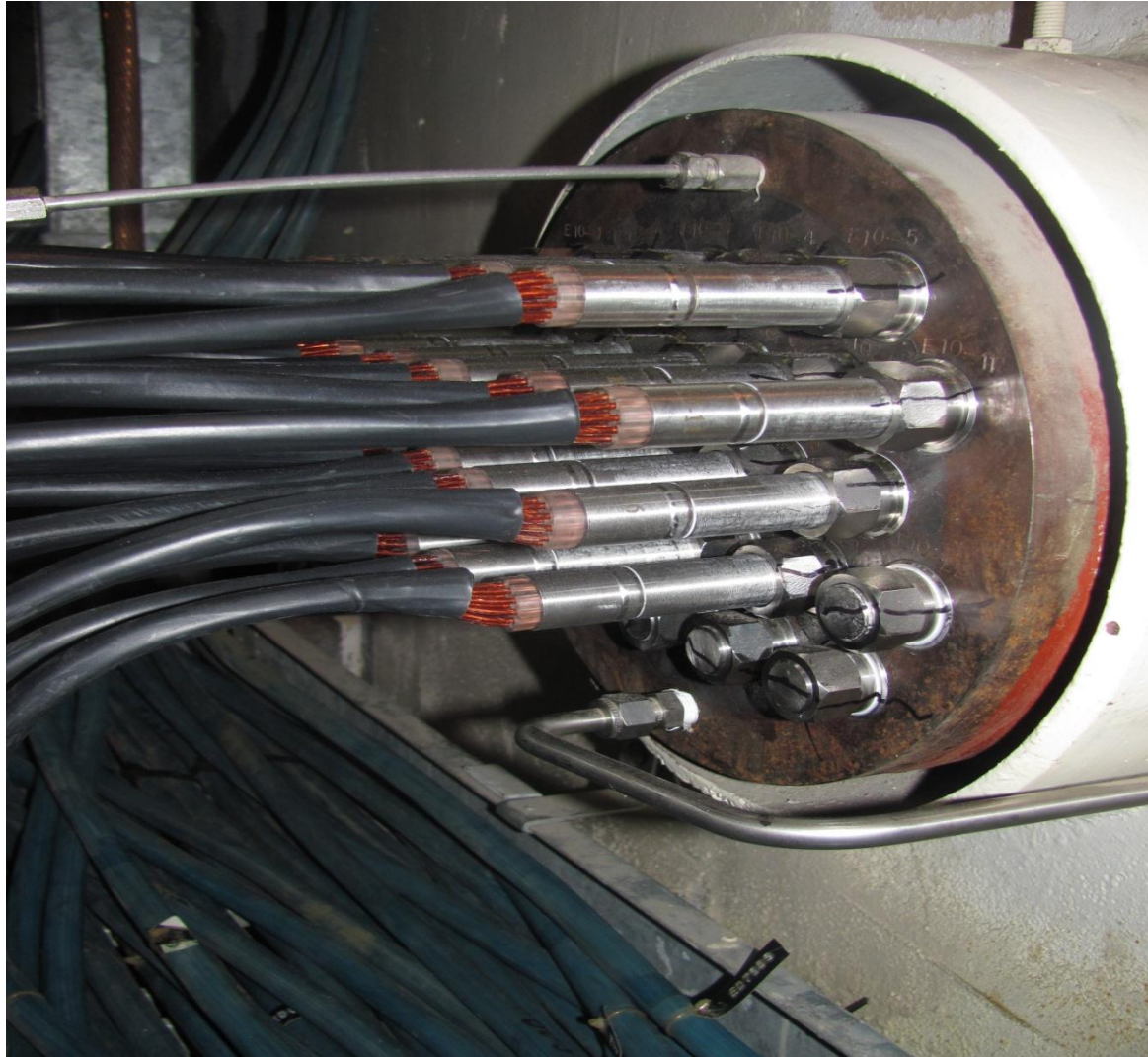
Recovery Work Completed

- **Discovery from June 2012 to May 2013**
 - **Approximately 27,000 Condition Reports generated**
 - **32 Root Cause Analyses completed or in progress**
 - **157 Apparent Cause Analyses completed**
- **Recovery from November 2012 to May 2013**
 - **Approximately 21,000 work tasks completed**
 - **Approximately 6,000 corrective actions completed**
- **Fundamental Performance Deficiencies identified, analyzed and being addressed**
- **Findings addressed for restart**
 - **Electrical bus fire concern – Red finding**
 - **Flooding concern – Yellow finding**
 - **Reactor Protection System concern – White finding**
 - **Security related concerns – Greater-than-green findings**

Intake Structure Flood Protection Modification



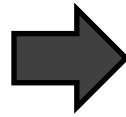
Modified Containment Electrical Penetration



Modified Containment Electrical Penetration (Close-up)



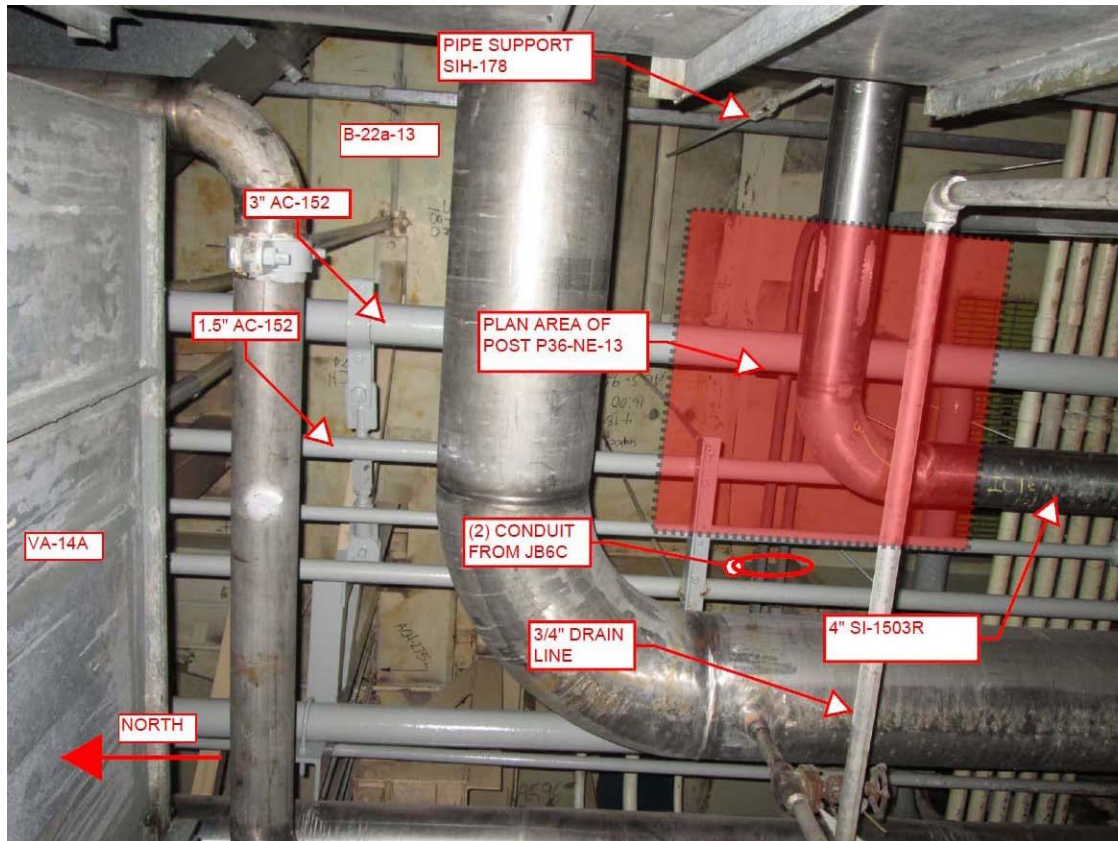
Manhole Restoration



Protected area vehicle access facility refurbished



Typical Interferences for Modification of Containment Internal Structures



Remaining Activities

- **Complete remaining work**
 - **Physical work tasks**
 - **Testing and return to service tasks**
 - **Actions from Condition Reports**
 - **Complete reviews and approvals to ensure Plant, People and Processes are ready for restart**
- **Address additional pre-restart improvement actions for design and licensing basis, Corrective Action Program and operating procedures**

Plan for Sustained Improvement

- **Proven Exelon process for sustained performance improvement**
- **Post-restart actions related to**
 - **Fundamental Performance Deficiencies**
 - **Checklist items**
 - **Design and licensing basis control and knowledge**
 - **Corrective Action Program**
 - **Integration with Exelon fleet**
- **Drive to sustained excellence**

Closing Remarks