

**Fort Calhoun Station
Integrated Performance
Improvement Plan**

February 22, 2012

Discussion Topics

- **Our Accountability**
- **Objectives**
- **Integrated Performance Improvement Plan**

Our Accountability

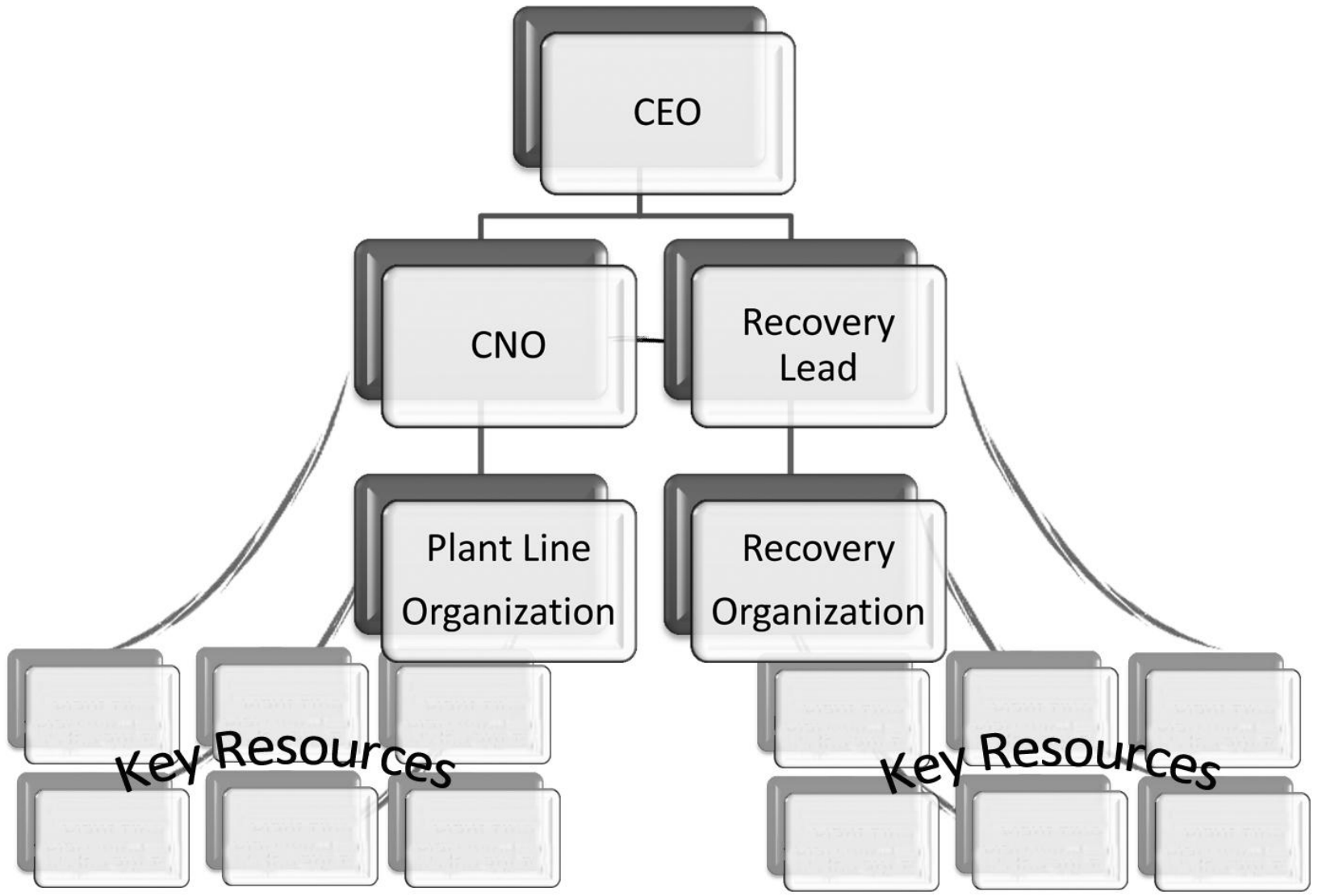
Fort Calhoun Station performance is unacceptable to us and we will do what is necessary to identify, analyze and resolve our issues.

Objectives

- **Improved and sustained station performance, equipment reliability, and risk reduction**
- **Identify and correct human performance issues**
- **Ensure ownership in the improvement initiatives**
- **Reestablish regulatory confidence**
- **Reinforce public confidence**

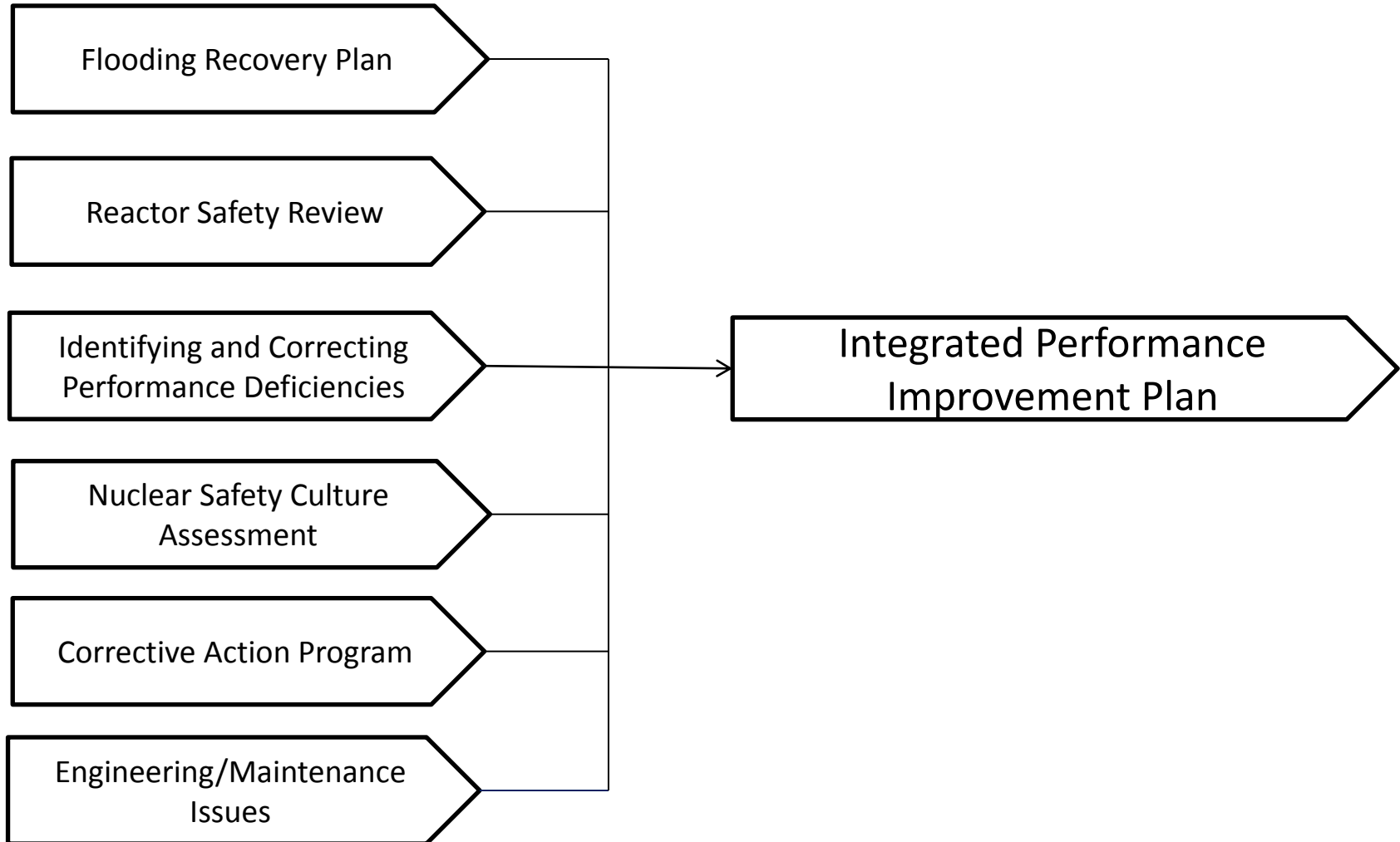
Plan Attributes

- **Site engagement**
- **External support**
 - **Exelon**
- **Oversight**
- **Communication**
- **Project scope**



Integrated Performance Improvement Plan Organization Chart

Fort Calhoun Integrated Performance Improvement Plan



Flooding Recovery Plan

- **Site restoration**
- **Plant systems and equipment**
- **Equipment reliability**
- **Design and licensing basis**
- **Emergency plan**
- **Security**

Reactor Safety Review

- **Key attributes**
 - **Design, equipment performance and configuration control**
 - **Human performance**
 - **Procedure quality**
 - **Emergency preparedness**
- **Identified deficiencies will be corrected**

Identifying and Correcting Performance Deficiencies

- **Purpose**
- **Major attributes**
 - **Corrective action program**
 - **Performance metrics**
 - **Employee concerns**
 - **Historical data review**
- **Identified discrepancies will be corrected**

Nuclear Safety Culture Assessment

- **Third Party Independent Assessment - Conger & Elsea**
- **Three key elements**
 - **Behaviors and practices**
 - **Safety culture survey**
 - **Employee concerns program**
- **Final report with identified areas of improvement**

Corrective Action Program Culture Improvements

- **Cause analysis**
- **Interim actions**
- **Training**
- **Program changes**

Engineering/Maintenance Issues

- **Program and process deficiencies have been identified**
- **Evaluation and analysis of deficiencies in progress**
- **Corrective actions will be taken**

Sustainability

- **Collective evaluation**
- **Cause analysis**
- **Action development and closure rigor**
- **Management changes**
- **External support**
- **Long term oversight**

Closing Comments