

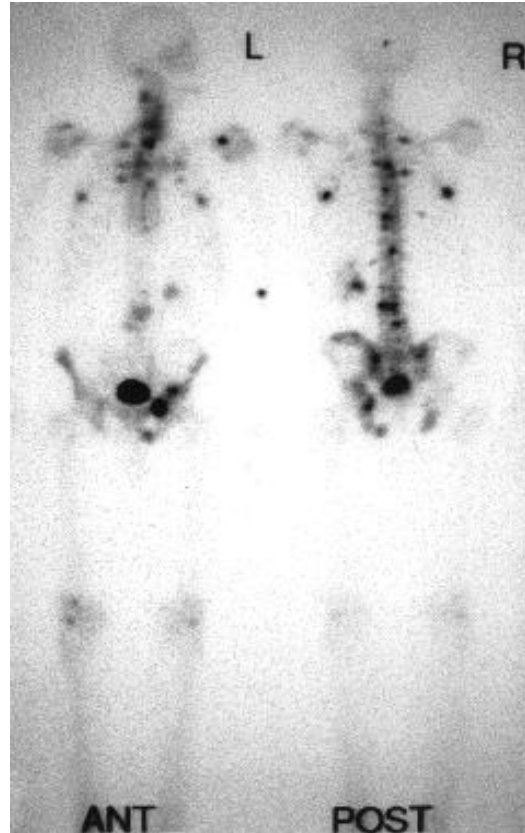


Medical Isotope Shortage: Update

October 20, 2010

Steve Mattmuller, MS, RPh, BCNP

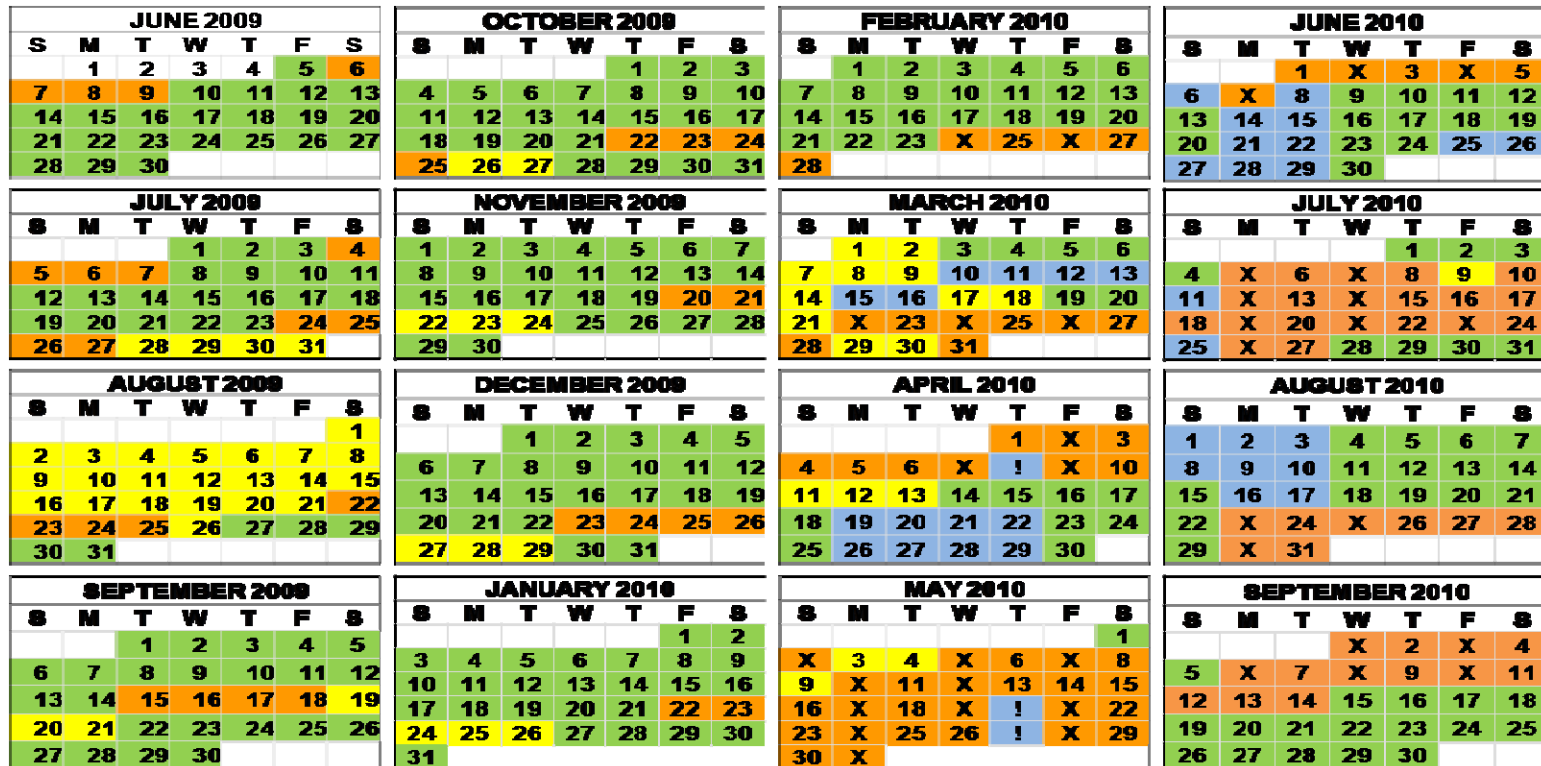
Need: Patient Care



Fragile Mo-99 Supply



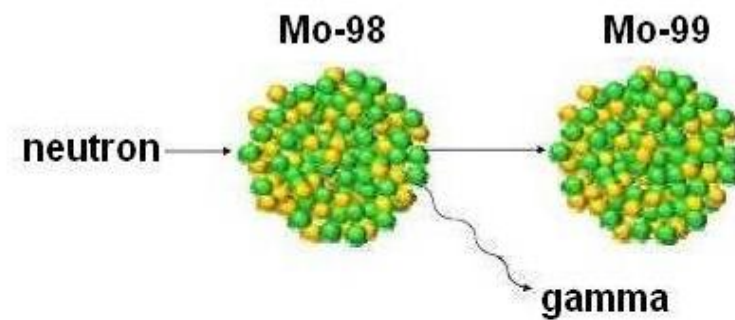
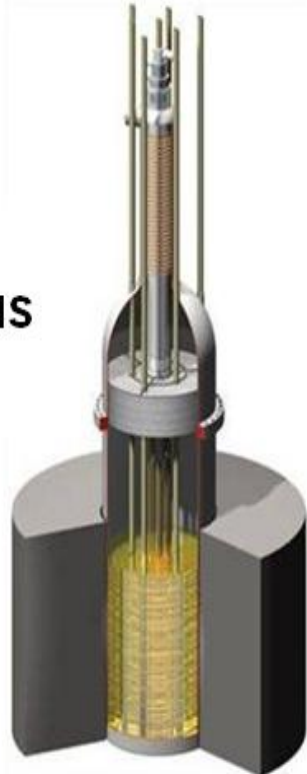
Effect on Patients



Long Term Solution

**Babcock &
Wilcox**

**Aqueous
Homogeneous
Reactor**



**General Electric - Hitachi
Neutron activation process**

Goal: Optimal Patient Care

Sunday	Monday	Tuesday	Wednesday	Thursday	Friday	Saturday						
1	2	3	4	5	6	7						
8	Sunday	Monday	Tuesday	Wednesday	Thursday	Friday	Saturday					
15	1	2	3	4	5	6	7					
22	8	Sunday	Monday	Tuesday	Wednesday	Thursday	Friday	Saturday				
29	15	1	2	3	4	5	6	7				
	22	8	Sunday	Monday	Tuesday	Wednesday	Thursday	Friday	Saturday			
	29	15	1	2	3	4	5	6	7			
		22	8	9	10	11	12	13	14			
		29	15	16	17	18	19	20	21			
			22	23	24	25	26	27	28			
			29	30	31							