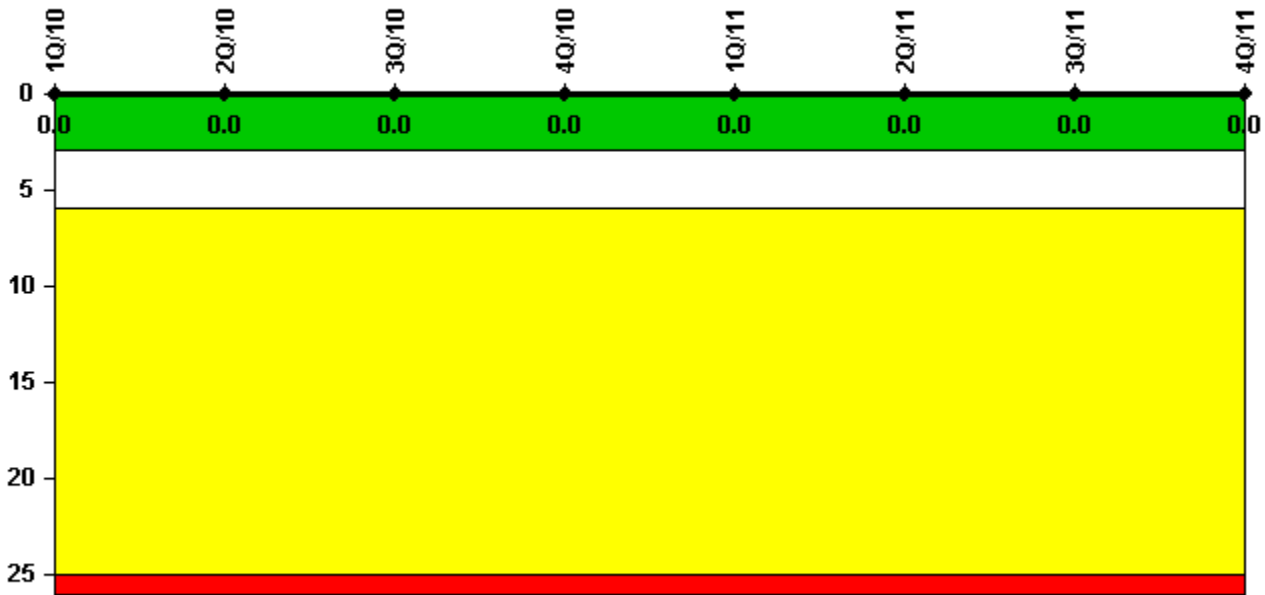


Callaway

4Q/2011 Performance Indicators

Licensee's General Comments: The MSPI Basis Document was revised effective 30 December 2011 to reflect the changes from approved FAQs 11-06 and 11-07.

Unplanned Scrams per 7000 Critical Hrs



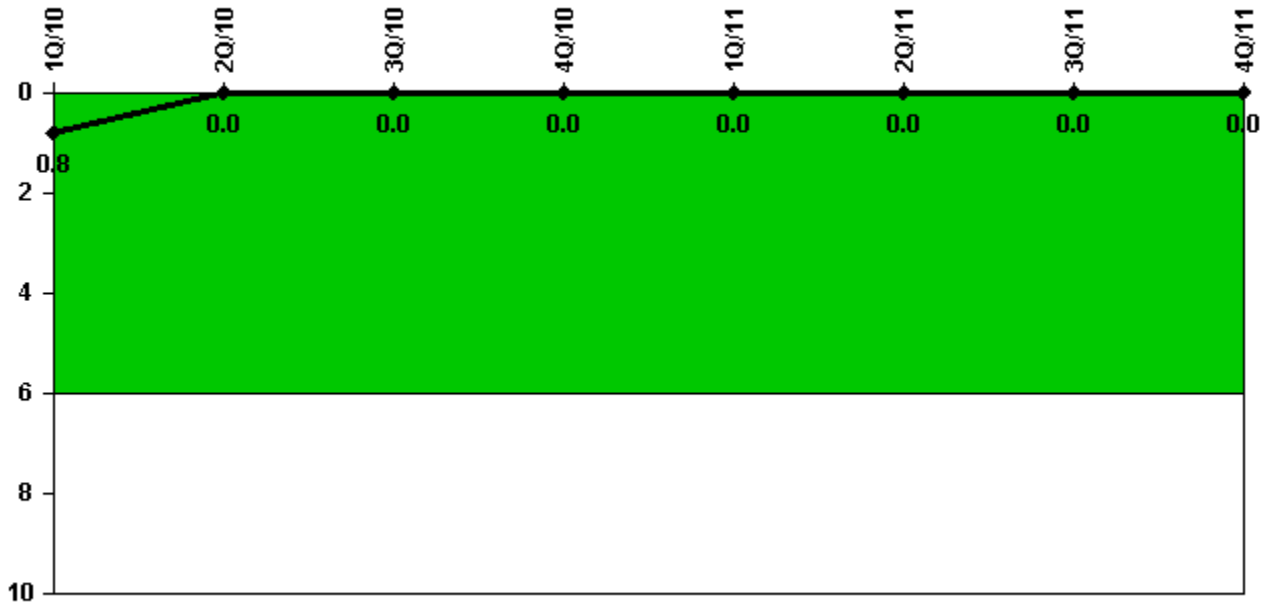
Thresholds: White > 3.0 Yellow > 6.0 Red > 25.0

Notes

Unplanned Scrams per 7000 Critical Hrs	1Q/10	2Q/10	3Q/10	4Q/10	1Q/11	2Q/11	3Q/11	4Q/11
Unplanned scrams	0	0	0	0	0	0	0	0
Critical hours	2159.0	849.6	2208.0	2209.0	2159.0	2184.0	2208.0	1233.2
Indicator value	0	0	0	0	0	0	0	0

Licensee Comments: none

Unplanned Power Changes per 7000 Critical Hrs



Thresholds: White > 6.0

Notes

Unplanned Power Changes per 7000 Critical Hrs	1Q/10	2Q/10	3Q/10	4Q/10	1Q/11	2Q/11	3Q/11	4Q/11
Unplanned power changes	0	0	0	0	0	0	0	0
Critical hours	2159.0	849.6	2208.0	2209.0	2159.0	2184.0	2208.0	1233.2
Indicator value	0.8	0	0	0	0	0	0	0

Licensee Comments: none

Unplanned Scrams with Complications



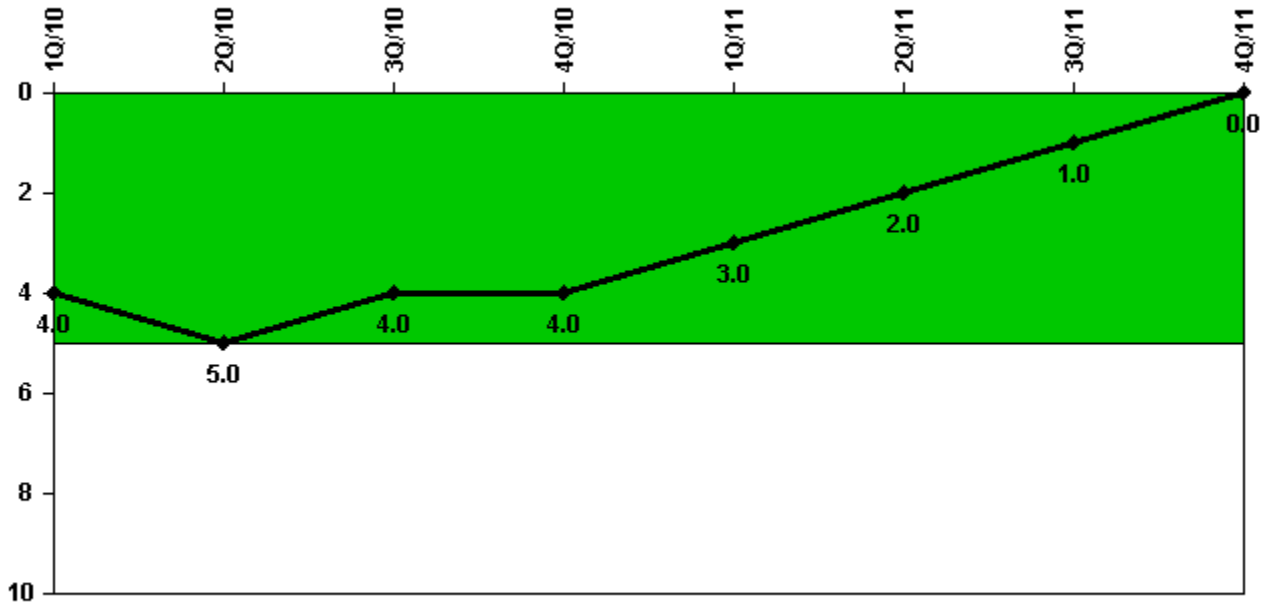
Thresholds: White > 1.0

Notes

Unplanned Scrams with Complications	1Q/10	2Q/10	3Q/10	4Q/10	1Q/11	2Q/11	3Q/11	4Q/11
Scrams with complications	0	0	0	0	0	0	0	0
Indicator value	0.0	0.0	0.0	0.0	0.0	0.0	0.0	0.0

Licensee Comments: none

Safety System Functional Failures (PWR)



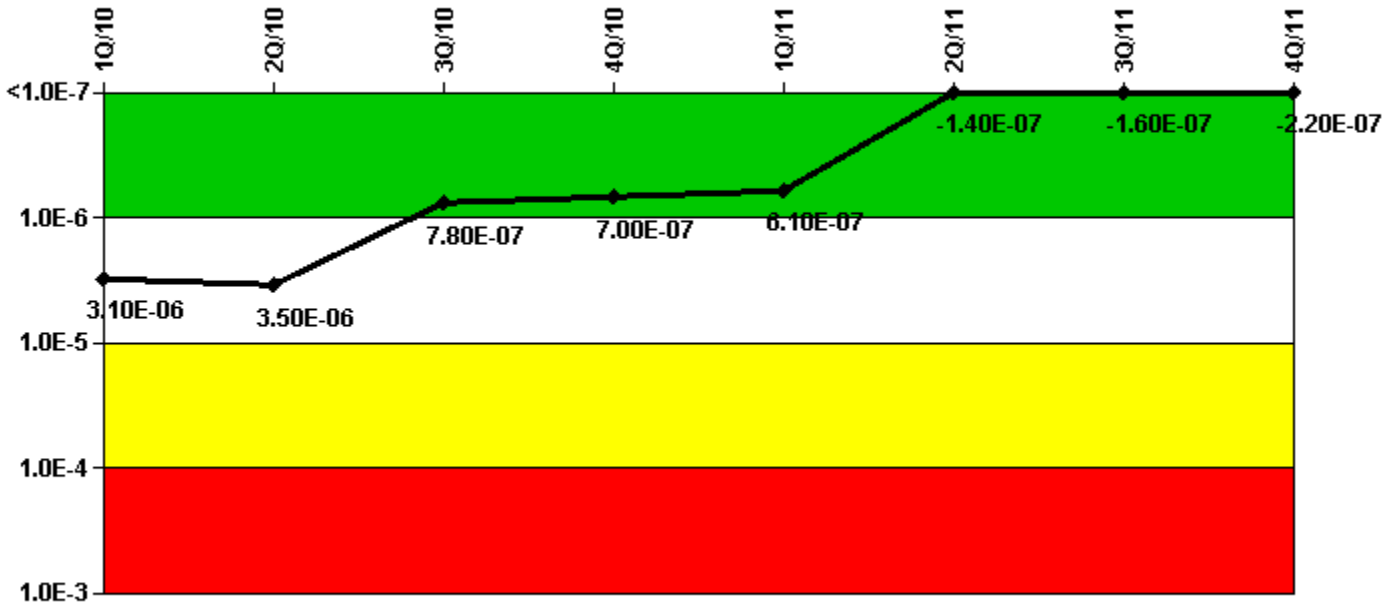
Thresholds: White > 5.0

Notes

Safety System Functional Failures (PWR)	1Q/10	2Q/10	3Q/10	4Q/10	1Q/11	2Q/11	3Q/11	4Q/11
Safety System Functional Failures	1	1	1	1	0	0	0	0
Indicator value	4	5	4	4	3	2	1	0

Licensee Comments: none

Mitigating Systems Performance Index, Emergency AC Power System



Thresholds: White > 1.00E-6 Yellow > 1.00E-5 Red > 1.00E-4

Notes

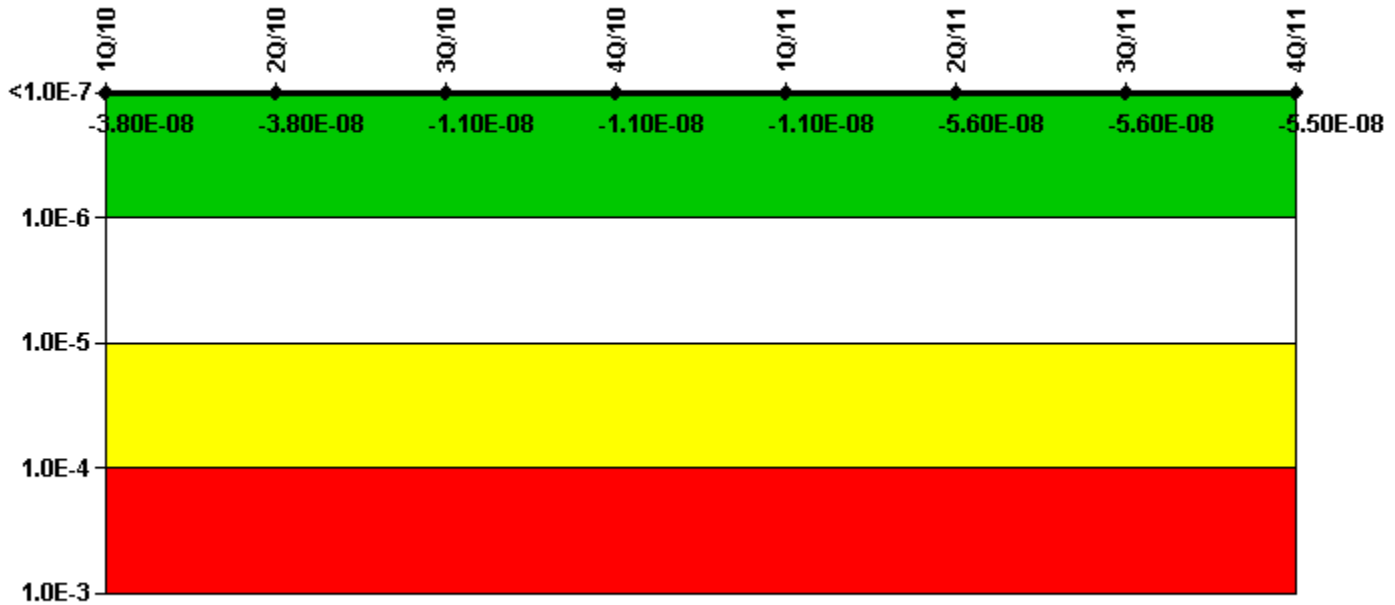
Mitigating Systems Performance Index, Emergency AC Power System	1Q/10	2Q/10	3Q/10	4Q/10	1Q/11	2Q/11	3Q/11	4Q/11
UAI (ΔCDF)	1.18E-06	1.61E-06	3.41E-07	2.55E-07	1.71E-07	1.03E-07	8.31E-08	8.70E-08
URI (ΔCDF)	1.94E-06	1.89E-06	4.41E-07	4.41E-07	4.41E-07	-2.47E-07	-2.47E-07	-3.10E-07
PLE	NO	NO	NO	NO	NO	NO	NO	NO
Indicator value	3.10E-06	3.50E-06	7.80E-07	7.00E-07	6.10E-07	-1.40E-07	-1.60E-07	-2.20E-07

Licensee Comments:

4Q/11: Two engineering evaluations that could affect MS06 have yet to be completed. The events under evaluation involve the following: 1) Emergency Diesel Generator (EDG) performance during maintenance testing on 9 November 2011, and 2) EDG Lube Oil Keep Warm Pump performance on 11 November 2011. The data initially submitted for this indicator reflected a status of "undetermined" for these two evaluations. However, in order to properly calculate a value for this indicator, the data was re-submitted to indicate preliminary results of "not an MSPI failure" for these evaluations until such time that the evaluations can be completed. This indicator is not projected to change color from Green regardless of whether either of these events is ultimately evaluated to be an MSPI failure.

4Q/11: Two engineering evaluations that could affect MS06 have yet to be completed. The events under evaluation involve the following: 1) Emergency Diesel Generator (EDG) performance during maintenance testing on 9 November 2011, and 2) EDG Lube Oil Keep Warm Pump performance on 11 November 2011.

Mitigating Systems Performance Index, High Pressure Injection System



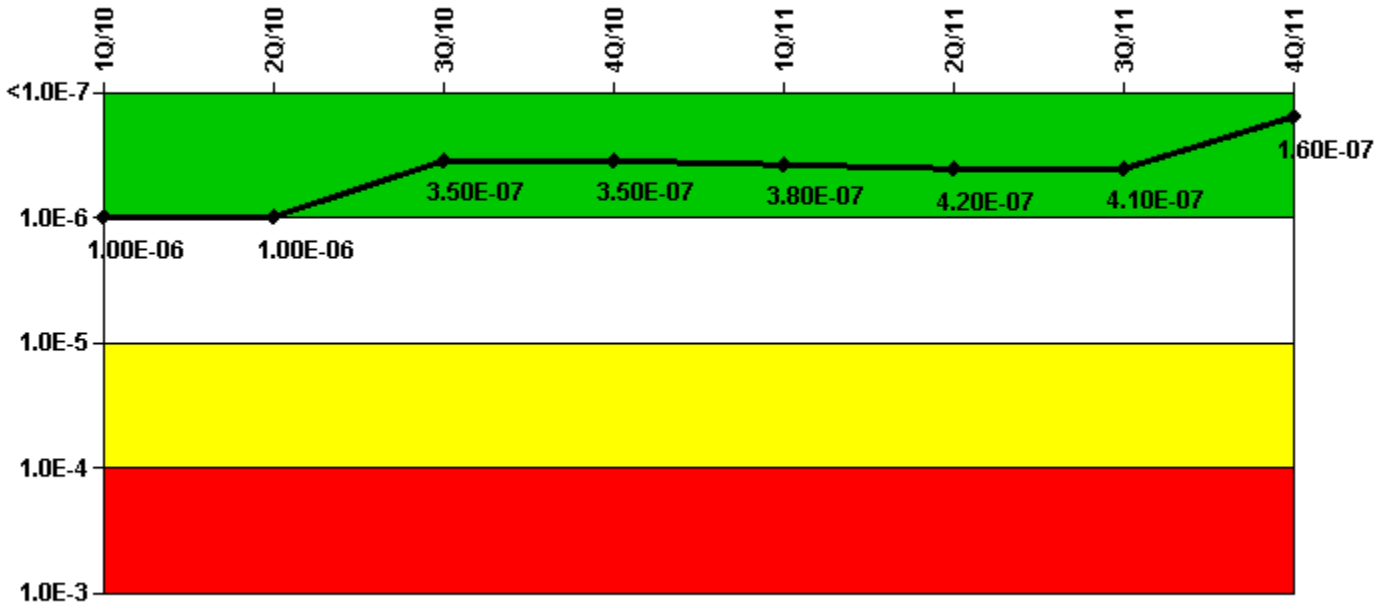
Thresholds: White > 1.00E-6 Yellow > 1.00E-5 Red > 1.00E-4

Notes

Mitigating Systems Performance Index, High Pressure Injection System	1Q/10	2Q/10	3Q/10	4Q/10	1Q/11	2Q/11	3Q/11	4Q/11
UAI (Δ CDF)	-4.85E-09	-4.85E-09	-1.50E-09	-1.47E-09	-1.54E-09	-6.33E-09	-6.33E-09	-6.33E-09
URI (Δ CDF)	-3.31E-08	-3.35E-08	-9.29E-09	-9.29E-09	-9.29E-09	-4.92E-08	-4.92E-08	-4.91E-08
PLE	NO	NO	NO	NO	NO	NO	NO	NO
Indicator value	-3.80E-08	-3.80E-08	-1.10E-08	-1.10E-08	-1.10E-08	-5.60E-08	-5.60E-08	-5.50E-08

Licensee Comments: none

Mitigating Systems Performance Index, Heat Removal System



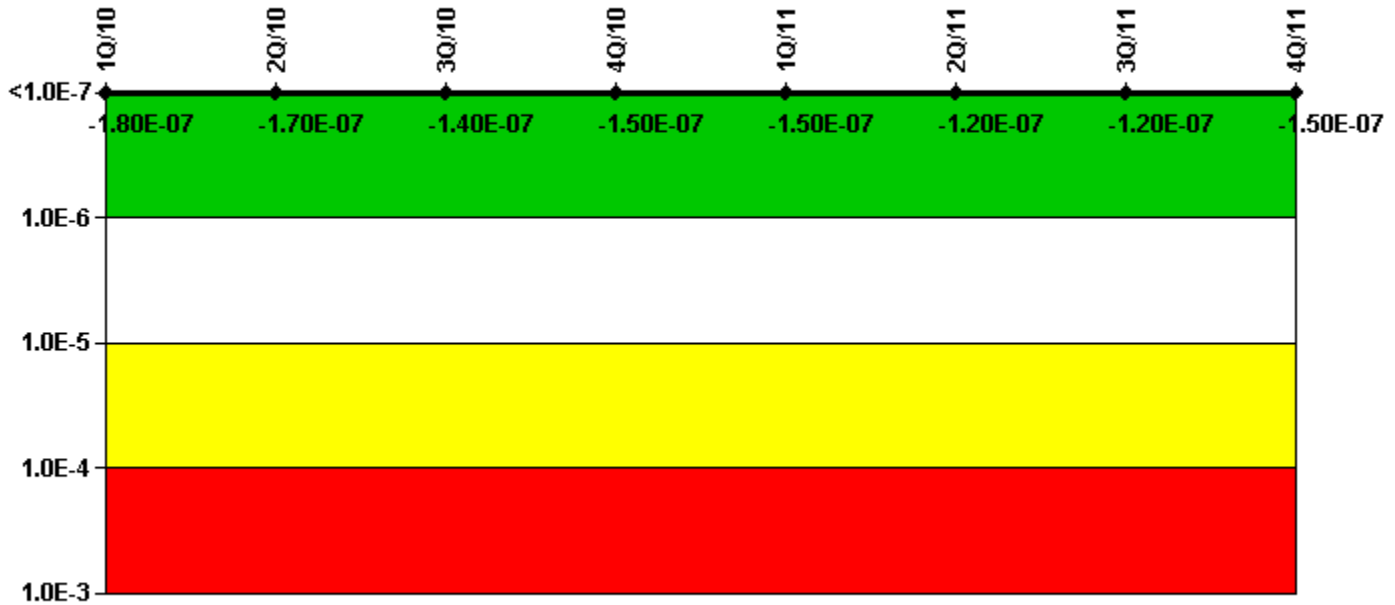
Thresholds: White > 1.00E-6 Yellow > 1.00E-5 Red > 1.00E-4

Notes

Mitigating Systems Performance Index, Heat Removal System	1Q/10	2Q/10	3Q/10	4Q/10	1Q/11	2Q/11	3Q/11	4Q/11
UAI (Δ CDF)	1.09E-07	1.13E-07	7.28E-09	1.55E-08	3.94E-08	3.22E-08	3.12E-08	3.79E-08
URI (Δ CDF)	8.92E-07	9.10E-07	3.38E-07	3.38E-07	3.38E-07	3.83E-07	3.83E-07	1.22E-07
PLE	NO	NO	NO	NO	NO	NO	NO	NO
Indicator value	1.00E-06	1.00E-06	3.50E-07	3.50E-07	3.80E-07	4.20E-07	4.10E-07	1.60E-07

Licensee Comments: none

Mitigating Systems Performance Index, Residual Heat Removal System



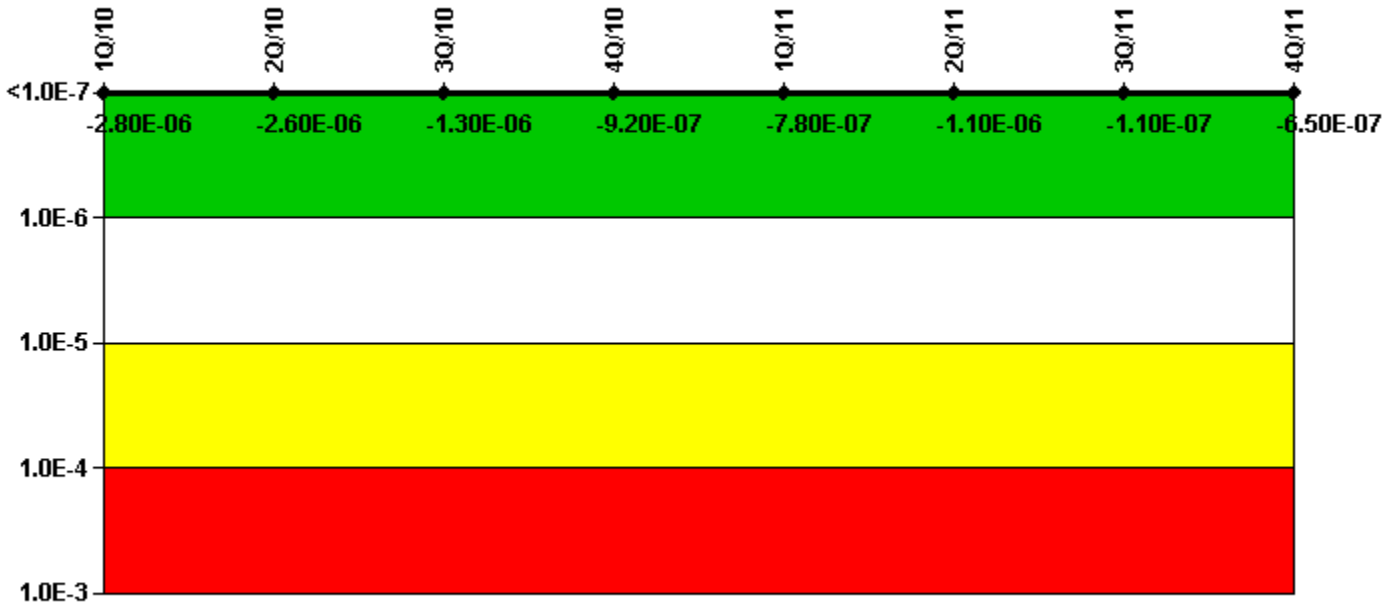
Thresholds: White > 1.00E-6 Yellow > 1.00E-5 Red > 1.00E-4

Notes

Mitigating Systems Performance Index, Residual Heat Removal System	1Q/10	2Q/10	3Q/10	4Q/10	1Q/11	2Q/11	3Q/11	4Q/11
UAI (Δ CDF)	-5.28E-09	-1.22E-10	-6.10E-09	-1.88E-08	-1.88E-08	7.64E-09	7.39E-09	-2.05E-08
URI (Δ CDF)	-1.71E-07	-1.65E-07	-1.34E-07	-1.34E-07	-1.34E-07	-1.31E-07	-1.31E-07	-1.31E-07
PLE	NO	NO	NO	NO	NO	NO	NO	NO
Indicator value	-1.80E-07	-1.70E-07	-1.40E-07	-1.50E-07	-1.50E-07	-1.20E-07	-1.20E-07	-1.50E-07

Licensee Comments: none

Mitigating Systems Performance Index, Cooling Water Systems



Thresholds: White > 1.00E-6 Yellow > 1.00E-5 Red > 1.00E-4

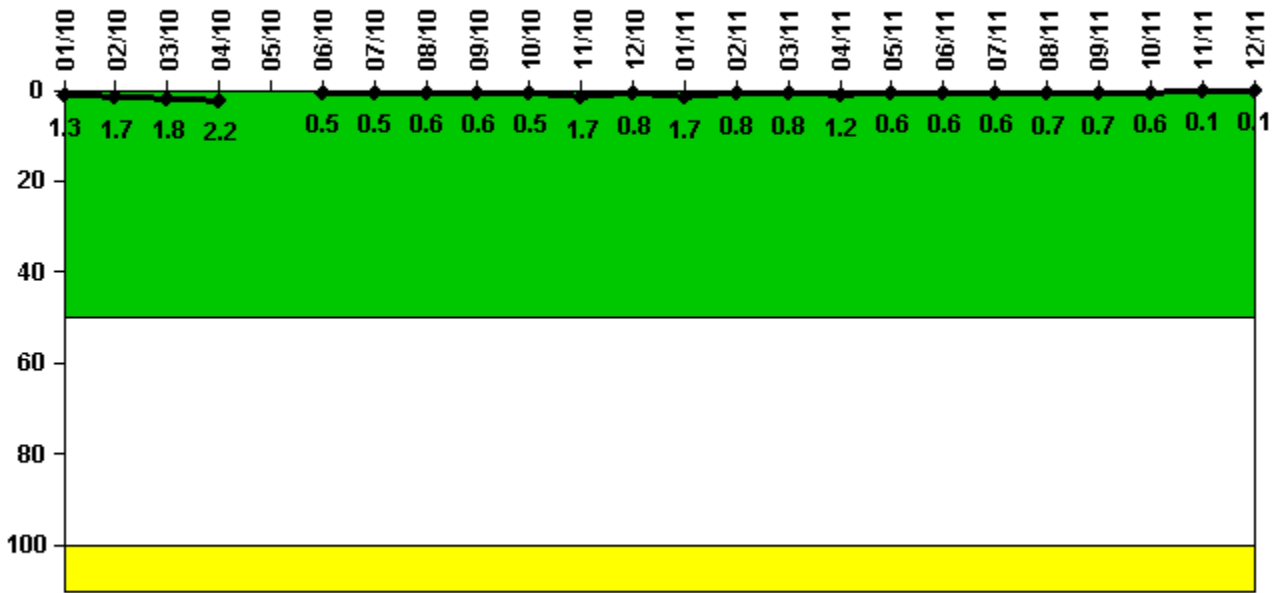
Notes

Mitigating Systems Performance Index, Cooling Water Systems	1Q/10	2Q/10	3Q/10	4Q/10	1Q/11	2Q/11	3Q/11	4Q/11
UAI (Δ CDF)	-1.67E-06	-1.46E-06	-5.59E-07	-2.25E-07	-8.29E-08	-1.90E-07	8.08E-07	2.68E-07
URI (Δ CDF)	-1.16E-06	-1.16E-06	-6.97E-07	-6.97E-07	-6.97E-07	-9.15E-07	-9.15E-07	-9.15E-07
PLE	NO	NO	NO	NO	NO	NO	NO	NO
Indicator value	-2.80E-06	-2.60E-06	-1.30E-06	-9.20E-07	-7.80E-07	-1.10E-06	-1.10E-07	-6.50E-07

Licensee Comments:

4Q/11: Risk Cap Invoked.

Reactor Coolant System Activity



Thresholds: White > 50.0 Yellow > 100.0

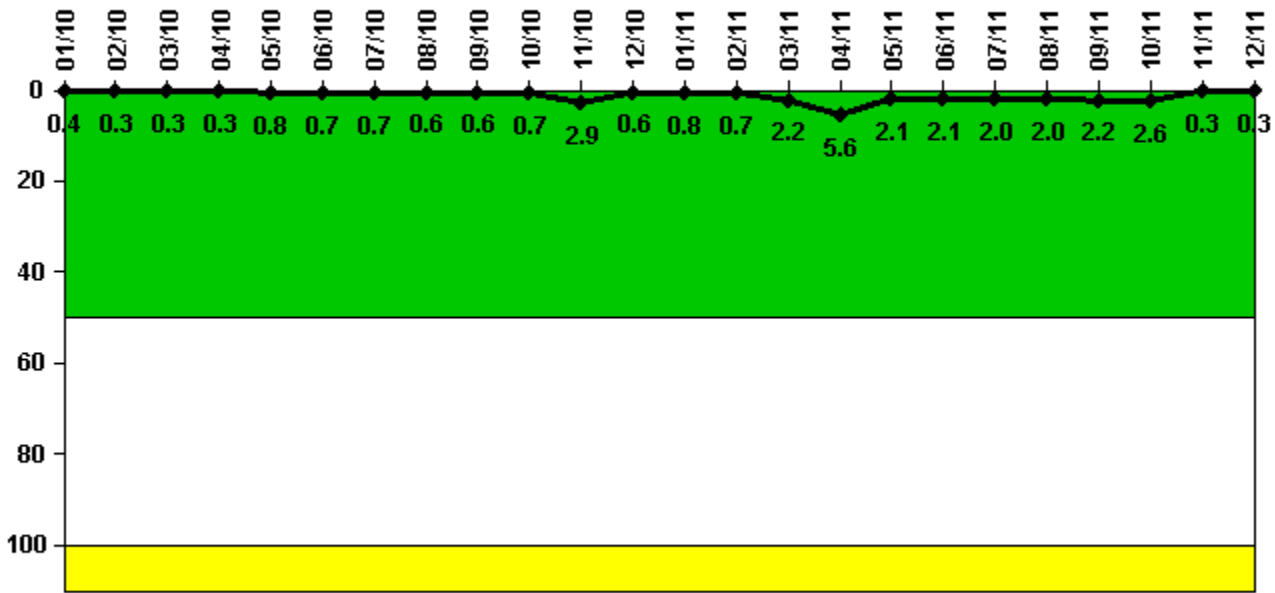
Notes

Reactor Coolant System Activity	1/10	2/10	3/10	4/10	5/10	6/10	7/10	8/10	9/10	10/10	11/10	12/10
Maximum activity	0.012600	0.012800	0.013600	0.016800	N/A	0.003680	0.003410	0.004570	0.004640	0.003980	0.012500	0.005750
Technical specification limit	1.0	0.8	0.8	0.8	0.8	0.8	0.8	0.8	0.8	0.8	0.8	0.8
Indicator value	1.3	1.7	1.8	2.2	N/A	0.5	0.5	0.6	0.6	0.5	1.7	0.8

Reactor Coolant System Activity	1/11	2/11	3/11	4/11	5/11	6/11	7/11	8/11	9/11	10/11	11/11	12/11
Maximum activity	0.013000	0.006000	0.006000	0.012000	0.005980	0.006260	0.006480	0.006680	0.006810	0.006370	0.000781	0.001400
Technical specification limit	0.8	0.8	0.8	1.0	1.0	1.0	1.0	1.0	1.0	1.0	1.0	1.0
Indicator value	1.7	0.8	0.8	1.2	0.6	0.6	0.6	0.7	0.7	0.6	0.1	0.1

Licensee Comments: none

Reactor Coolant System Leakage



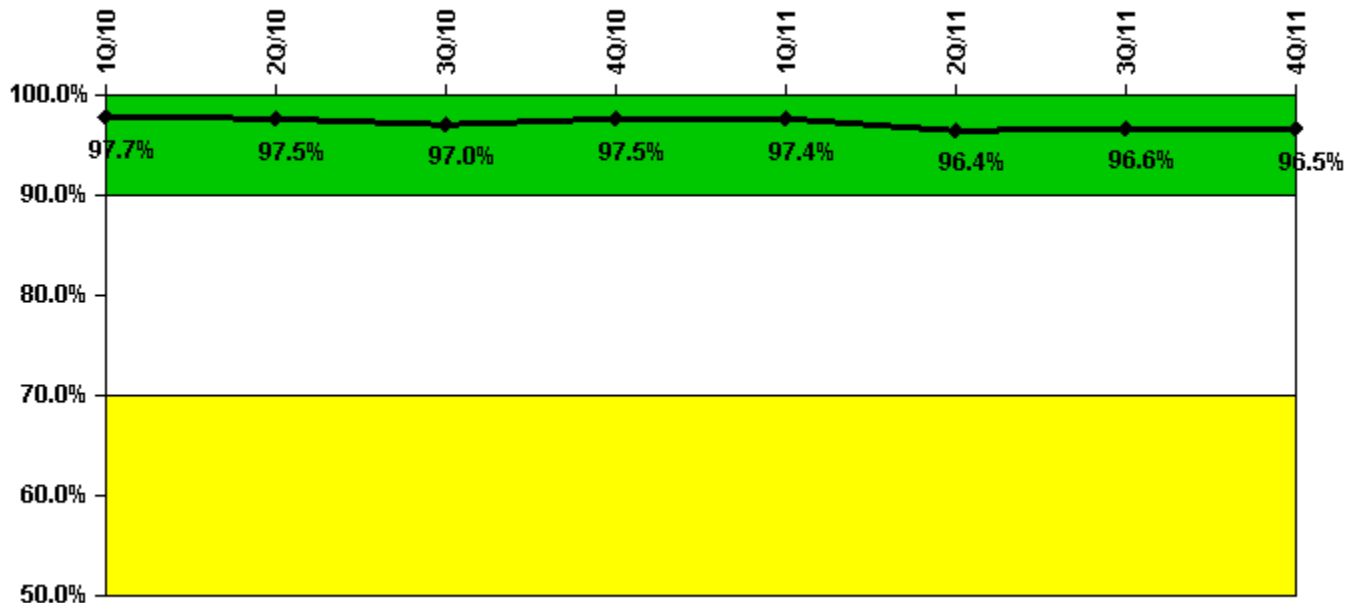
Thresholds: White > 50.0 Yellow > 100.0

Notes

Reactor Coolant System Leakage	1/10	2/10	3/10	4/10	5/10	6/10	7/10	8/10	9/10	10/10	11/10	12/10
Maximum leakage	0.039	0.025	0.031	0.034	0.076	0.066	0.068	0.058	0.058	0.072	0.294	0.062
Technical specification limit	10.0	10.0	10.0	10.0	10.0	10.0	10.0	10.0	10.0	10.0	10.0	10.0
Indicator value	0.4	0.3	0.3	0.3	0.8	0.7	0.7	0.6	0.6	0.7	2.9	0.6
Reactor Coolant System Leakage	1/11	2/11	3/11	4/11	5/11	6/11	7/11	8/11	9/11	10/11	11/11	12/11
Maximum leakage	0.080	0.066	0.218	0.564	0.212	0.208	0.204	0.199	0.220	0.260	0.033	0.025
Technical specification limit	10.0	10.0	10.0	10.0	10.0	10.0	10.0	10.0	10.0	10.0	10.0	10.0
Indicator value	0.8	0.7	2.2	5.6	2.1	2.1	2.0	2.0	2.2	2.6	0.3	0.3

Licensee Comments: none

Drill/Exercise Performance



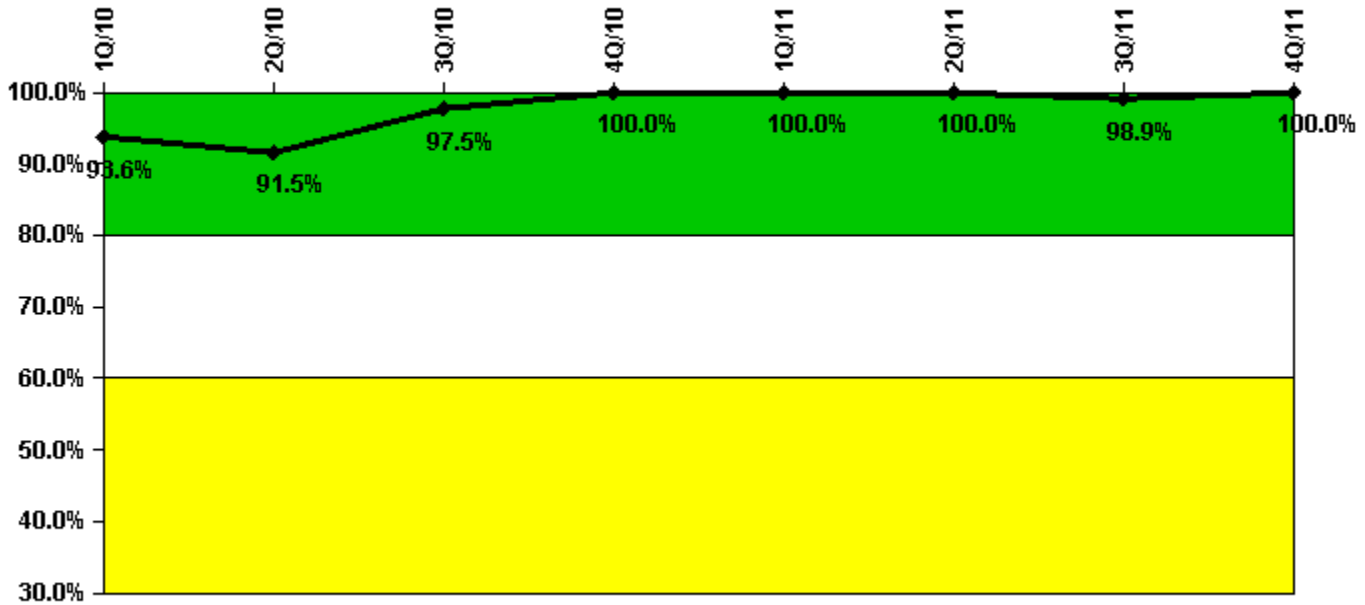
Thresholds: White < 90.0% Yellow < 70.0%

Notes

Drill/Exercise Performance	1Q/10	2Q/10	3Q/10	4Q/10	1Q/11	2Q/11	3Q/11	4Q/11
Successful opportunities	6.0	0	37.0	31.0	50.0	23.0	36.0	9.0
Total opportunities	6.0	1.0	39.0	32.0	50.0	24.0	37.0	10.0
Indicator value	97.7%	97.5%	97.0%	97.5%	97.4%	96.4%	96.6%	96.5%

Licensee Comments: none

ERO Drill Participation



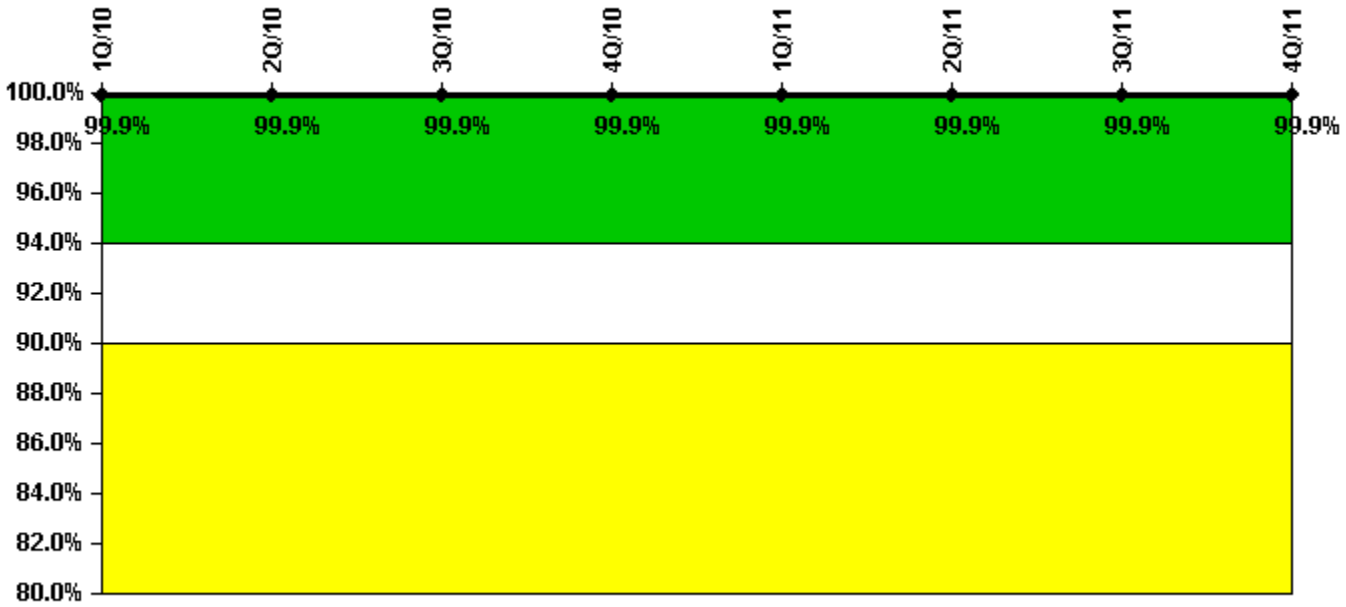
Thresholds: White < 80.0% Yellow < 60.0%

Notes

ERO Drill Participation	1Q/10	2Q/10	3Q/10	4Q/10	1Q/11	2Q/11	3Q/11	4Q/11
Participating Key personnel	102.0	97.0	115.0	113.0	90.0	93.0	94.0	97.0
Total Key personnel	109.0	106.0	118.0	113.0	90.0	93.0	95.0	97.0
Indicator value	93.6%	91.5%	97.5%	100.0%	100.0%	100.0%	98.9%	100.0%

Licensee Comments: none

Alert & Notification System



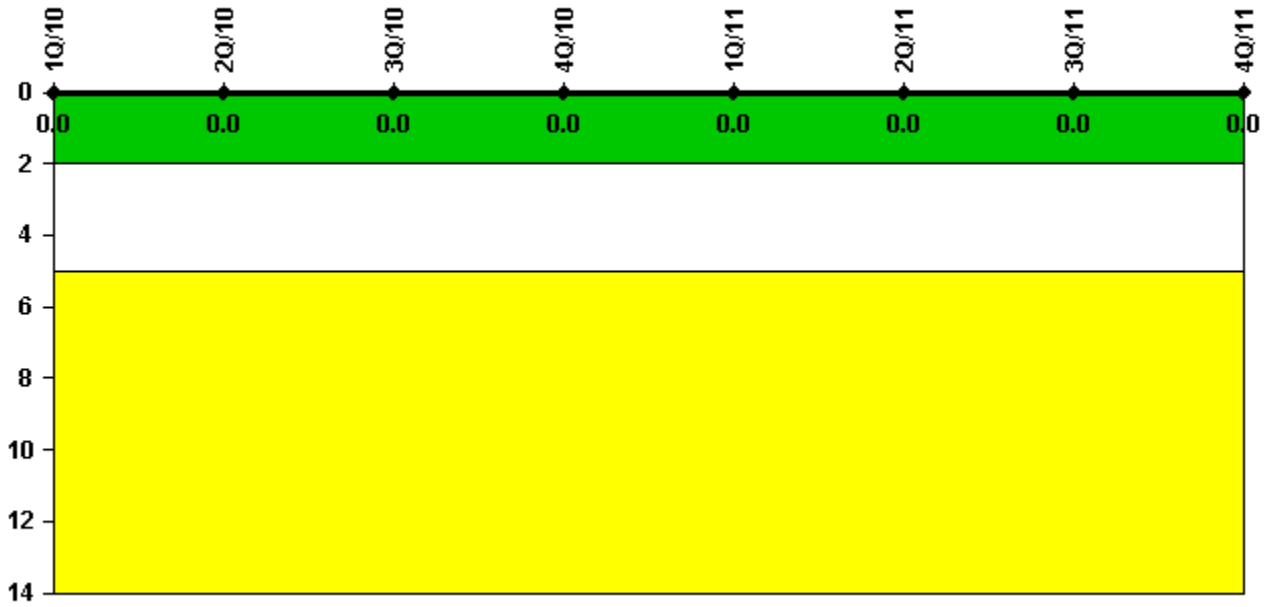
Thresholds: White < 94.0% Yellow < 90.0%

Notes

Alert & Notification System	1Q/10	2Q/10	3Q/10	4Q/10	1Q/11	2Q/11	3Q/11	4Q/11
Successful siren-tests	377	377	377	376	377	405	377	377
Total sirens-tests	377	377	377	377	377	406	377	377
Indicator value	99.9%	99.9%	99.9%	99.9%	99.9%	99.9%	99.9%	99.9%

Licensee Comments: none

Occupational Exposure Control Effectiveness



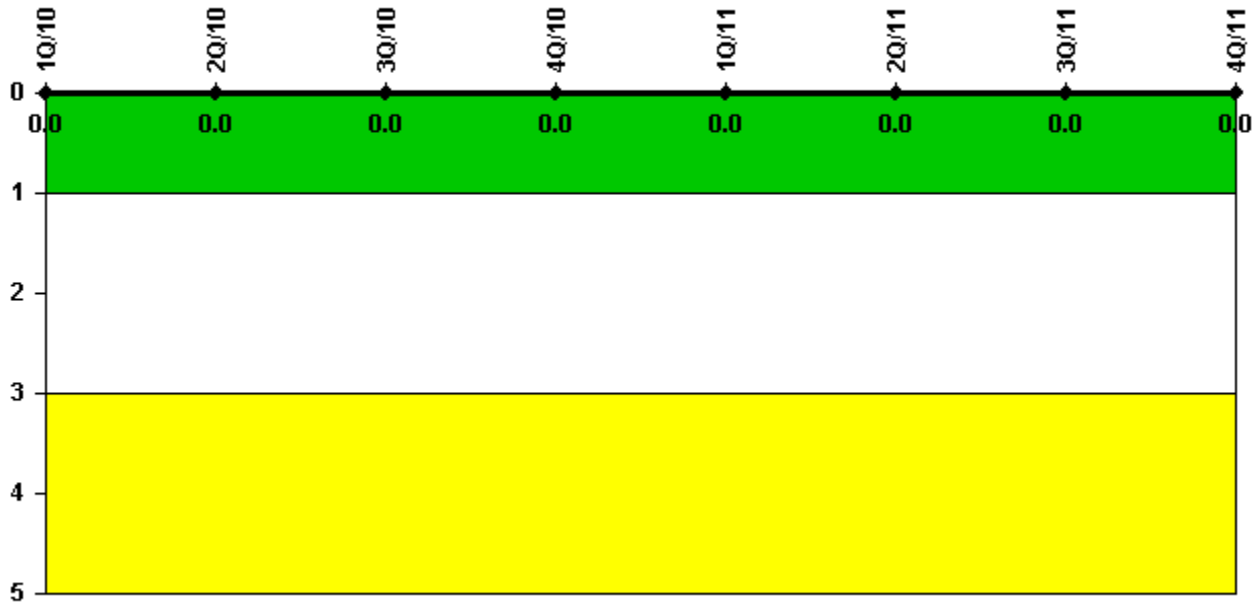
Thresholds: White > 2.0 Yellow > 5.0

Notes

Occupational Exposure Control Effectiveness	1Q/10	2Q/10	3Q/10	4Q/10	1Q/11	2Q/11	3Q/11	4Q/11
High radiation area occurrences	0	0	0	0	0	0	0	0
Very high radiation area occurrences	0	0	0	0	0	0	0	0
Unintended exposure occurrences	0	0	0	0	0	0	0	0
Indicator value	0	0	0	0	0	0	0	0

Licensee Comments: none

RETS/ODCM Radiological Effluent



Thresholds: White > 1.0 Yellow > 3.0

Notes

RETS/ODCM Radiological Effluent	1Q/10	2Q/10	3Q/10	4Q/10	1Q/11	2Q/11	3Q/11	4Q/11
RETS/ODCM occurrences	0	0	0	0	0	0	0	0
Indicator value	0	0	0	0	0	0	0	0

Licensee Comments: none

[Security](#) information not publicly available.