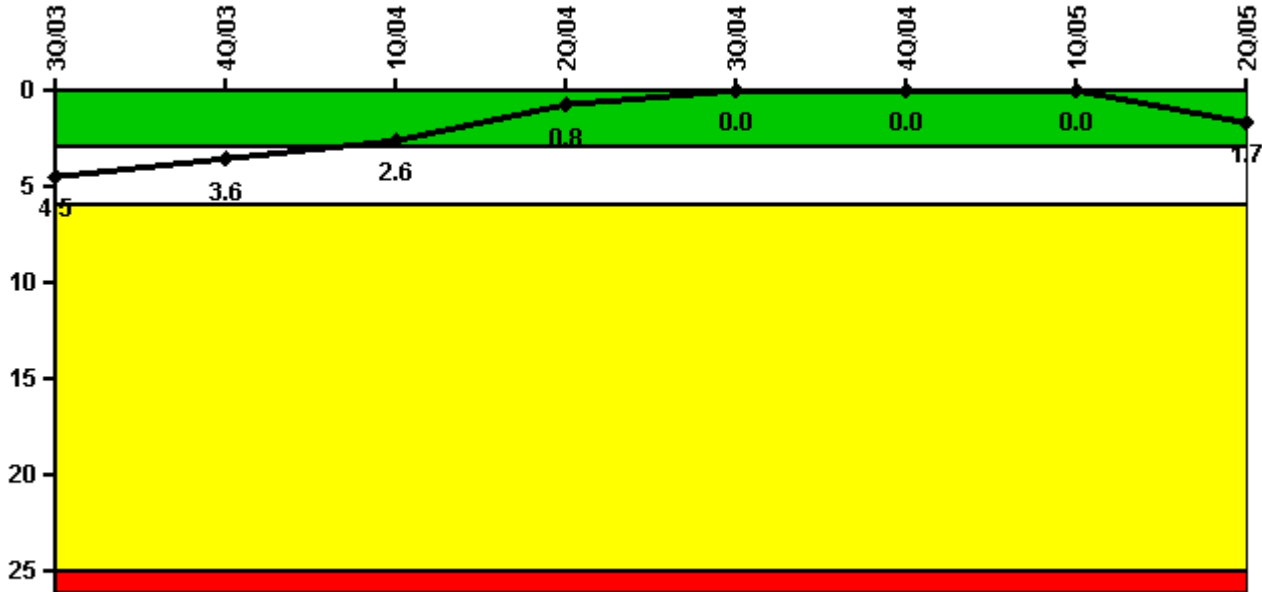


Indian Point 3

2Q/2005 Performance Indicators

Licensee's General Comments: none

Unplanned Scrams per 7000 Critical Hrs



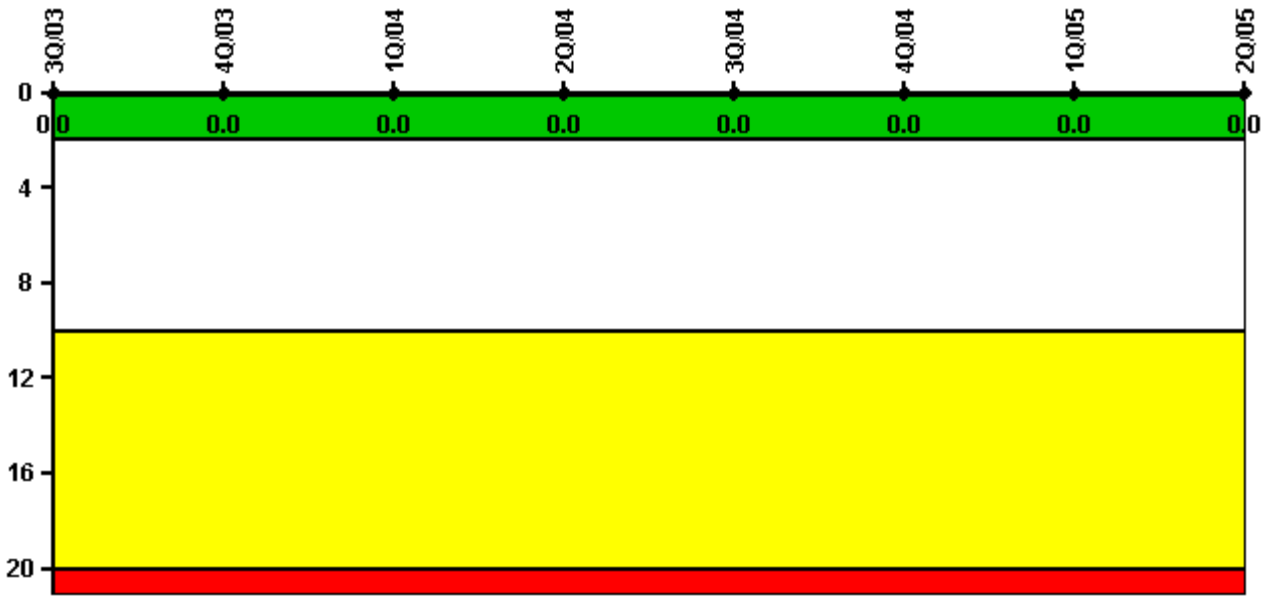
Thresholds: White > 3.0 Yellow > 6.0 Red > 25.0

Notes

Unplanned Scrams per 7000 Critical Hrs	3Q/03	4Q/03	1Q/04	2Q/04	3Q/04	4Q/04	1Q/05	2Q/05
Unplanned scrams	1.0	0	0	0	0	0	0	2.0
Critical hours	2037.5	2209.0	2184.0	2183.0	2208.0	2209.0	1680.0	2026.0
Indicator value	4.5	3.6	2.6	0.8	0	0	0	1.7

Licensee Comments: none

Scrams with Loss of Normal Heat Removal



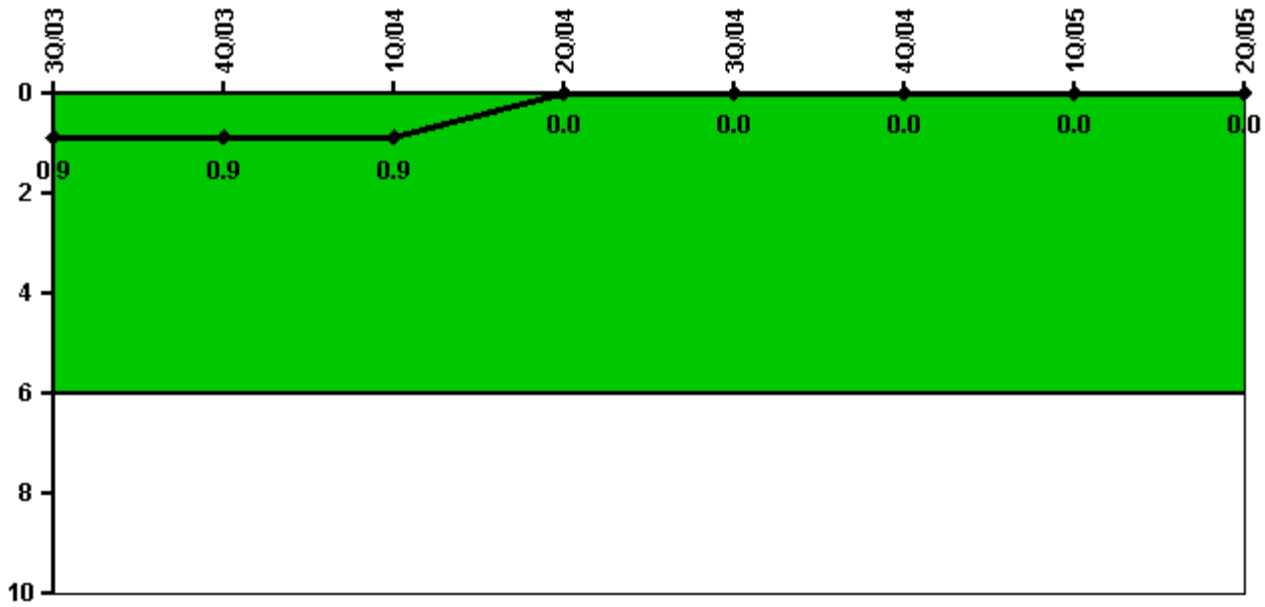
Thresholds: White > 2.0 Yellow > 10.0 Red > 20.0

Notes

Scrams with Loss of Normal Heat Removal	3Q/03	4Q/03	1Q/04	2Q/04	3Q/04	4Q/04	1Q/05	2Q/05
Scrams	0	0	0	0	0	0	0	0
Indicator value	0	0	0	0	0	0	0	0

Licensee Comments: none

Unplanned Power Changes per 7000 Critical Hrs



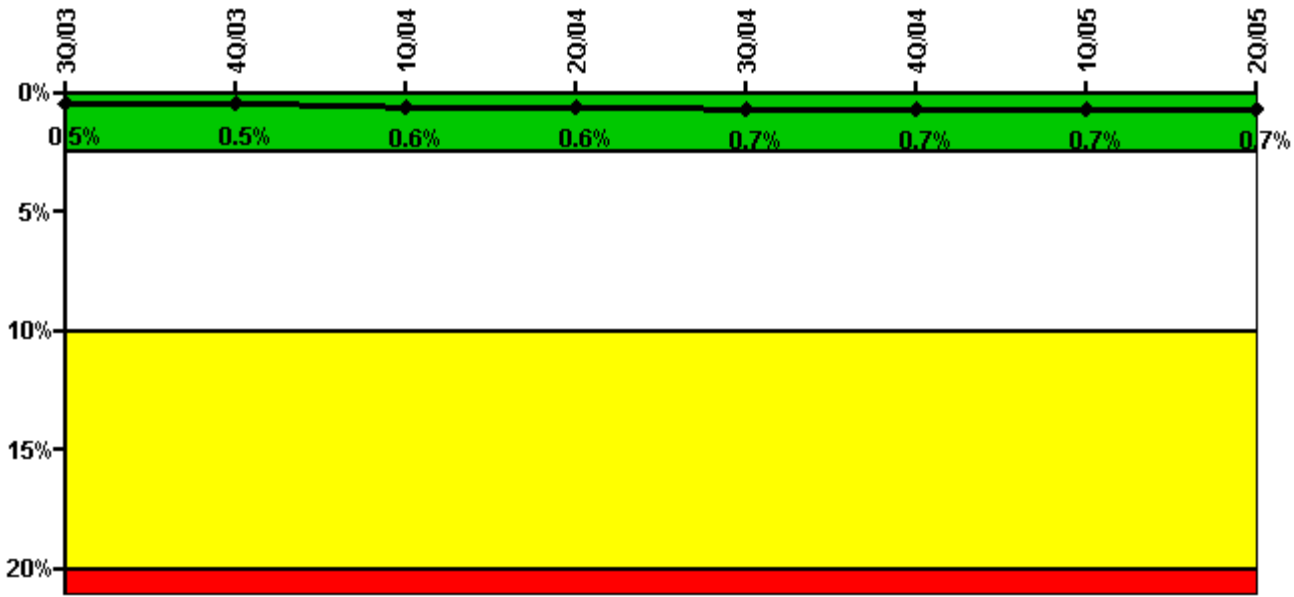
Thresholds: White > 6.0

Notes

Unplanned Power Changes per 7000 Critical Hrs	3Q/03	4Q/03	1Q/04	2Q/04	3Q/04	4Q/04	1Q/05	2Q/05
Unplanned power changes	0	0	0	0	0	0	0	0
Critical hours	2037.5	2209.0	2184.0	2183.0	2208.0	2209.0	1680.0	2026.0
Indicator value	0.9	0.9	0.9	0	0	0	0	0

Licensee Comments: none

Safety System Unavailability, Emergency AC Power, >2EDG



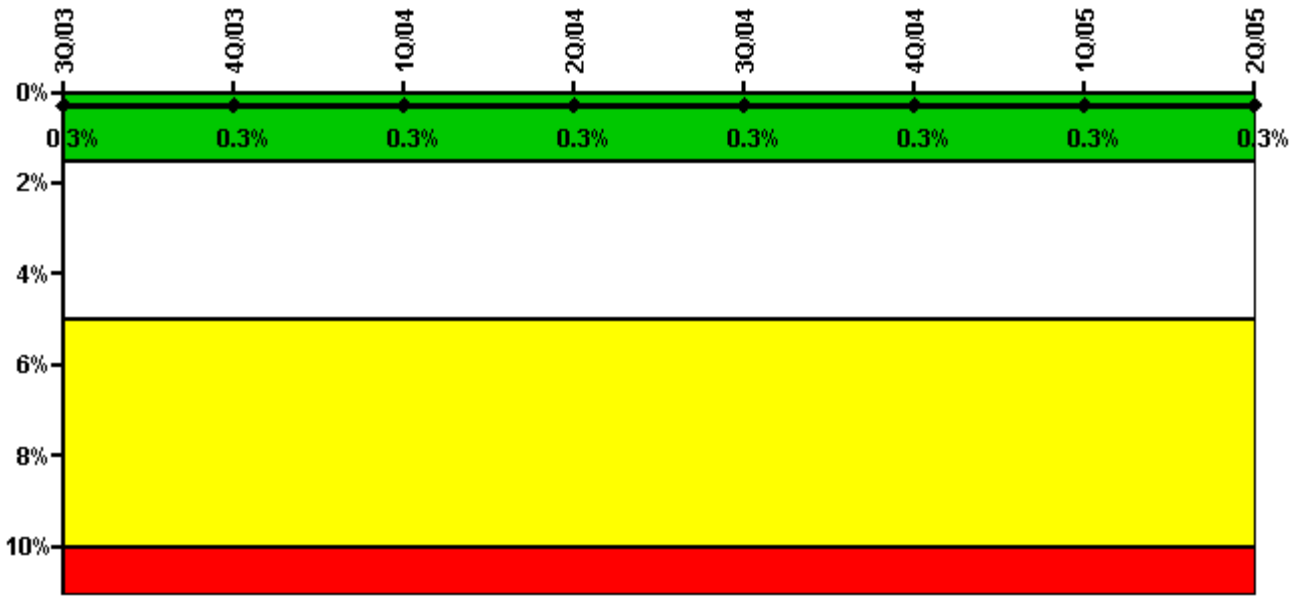
Thresholds: White > 2.5% Yellow > 10.0% Red > 20.0%

Notes

Safety System Unavailability, Emergency AC Power, >2EDG	3Q/03	4Q/03	1Q/04	2Q/04	3Q/04	4Q/04	1Q/05	2Q/05
Train 1								
Planned unavailable hours	51.65	0	20.11	3.28	22.49	14.53	12.20	44.93
Unplanned unavailable hours	3.67	0	0	0	0	0	0	0
Fault exposure hours	0	0	0	0	0	0	0	0
Effective Reset hours	0	0	0	0	0	0	0	0
Required hours	2208.00	2209.00	2184.00	2183.00	2208.00	2209.00	2160.00	2183.00
Train 2								
Planned unavailable hours	36.00	0	26.48	0	18.52	7.17	0	0
Unplanned unavailable hours	0	0	0	0	13.72	0	0	0
Fault exposure hours	0	0	0	0	0	0	0	0
Effective Reset hours	0	0	0	0	0	0	0	0
Required hours	2208.00	2209.00	2184.00	2183.00	2208.00	2209.00	2160.00	2183.00
Train 3								
Planned unavailable hours	19.50	33.80	13.58	0	10.76	0	13.23	7.43
Unplanned unavailable hours	7.46	0	0	17.16	0	0	0	0
Fault exposure hours	0	0	0	0	0	0	0	0
Effective Reset hours	0	0	0	0	0	0	0	0
Required hours	2208.00	2209.00	2184.00	2183.00	2208.00	2209.00	2160.00	2183.00
Indicator value	0.5%	0.5%	0.6%	0.6%	0.7%	0.7%	0.7%	0.7%

Licensee Comments: none

Safety System Unavailability, High Pressure Injection System (HPSI)



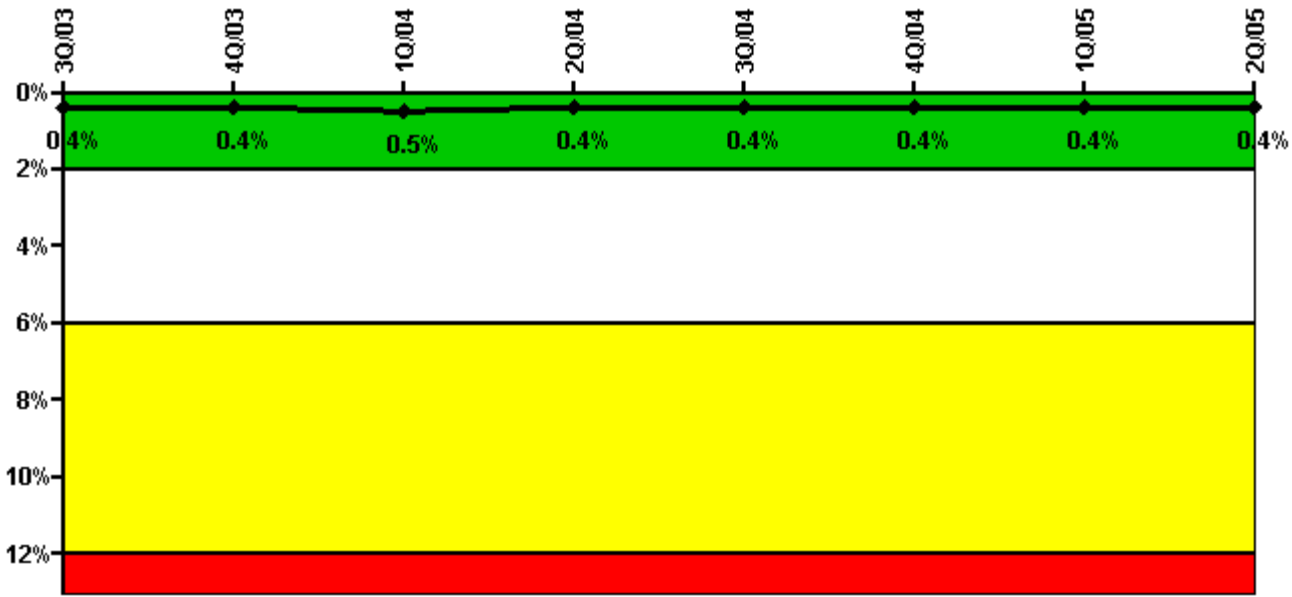
Thresholds: White > 1.5% Yellow > 5.0% Red > 10.0%

Notes

Safety System Unavailability, High Pressure Injection System (HPSI)	3Q/03	4Q/03	1Q/04	2Q/04	3Q/04	4Q/04	1Q/05	2Q/05
Train 1								
Planned unavailable hours	14.50	10.15	4.03	4.80	10.49	2.27	4.15	4.86
Unplanned unavailable hours	0	0	0	0	0	0	0	0
Fault exposure hours	0	0	0	0	0	0	0	0
Effective Reset hours	0	0	0	0	0	0	0	0
Required hours	2038.00	2209.00	2184.00	2183.00	2208.00	2209.00	1680.00	2025.89
Train 2								
Planned unavailable hours	8.83	3.38	0.53	3.00	13.15	1.50	1.25	1.97
Unplanned unavailable hours	0	0	0	0	0	0	0	0
Fault exposure hours	0	0	0	0	0	0	0	0
Effective Reset hours	0	0	0	0	0	0	0	0
Required hours	2038.00	2209.00	2184.00	2183.00	2208.00	2209.00	1680.00	2025.89
Train 3								
Planned unavailable hours	3.48	2.40	3.75	4.50	2.00	5.47	3.46	3.56
Unplanned unavailable hours	0	0	0	0	9.46	0	13.00	0
Fault exposure hours	0	0	0	0	0	0	0	0
Effective Reset hours	0	0	0	0	0	0	0	0
Required hours	2038.00	2209.00	2184.00	2183.00	2208.00	2209.00	1680.00	2025.89
Indicator value	0.3%	0.3%	0.3%	0.3%	0.3%	0.3%	0.3%	0.3%

Licensee Comments: none

Safety System Unavailability, Heat Removal System (AFW)



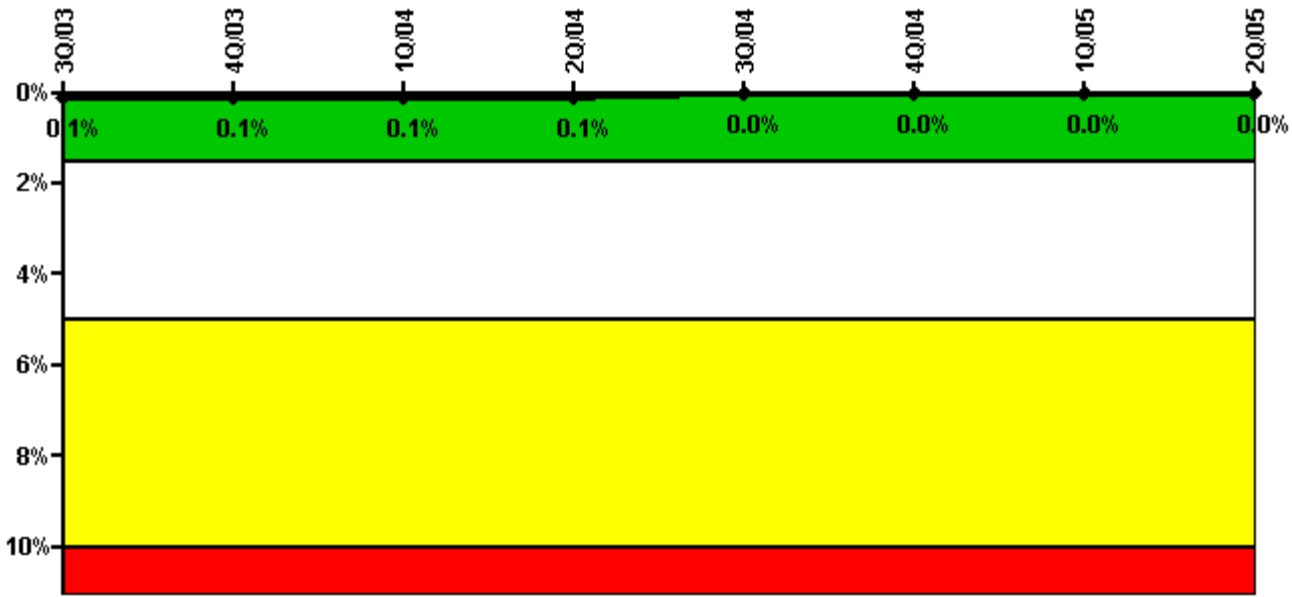
Thresholds: White > 2.0% Yellow > 6.0% Red > 12.0%

Notes

Safety System Unavailability, Heat Removal System (AFW)	3Q/03	4Q/03	1Q/04	2Q/04	3Q/04	4Q/04	1Q/05	2Q/05
Train 1								
Planned unavailable hours	32.67	3.41	0	2.42	6.36	1.10	5.70	1.07
Unplanned unavailable hours	0	0	0	0	0	0	0	0
Fault exposure hours	0	0	0	0	0	0	0	0
Effective Reset hours	0	0	0	0	0	0	0	0
Required hours	2038.00	2209.00	2184.00	2183.00	2208.00	2209.00	1680.02	2044.89
Train 2								
Planned unavailable hours	24.28	3.28	16.90	2.08	12.77	32.87	4.08	3.65
Unplanned unavailable hours	0	12.42	0	0	0	5.90	0	0
Fault exposure hours	0	0	0	0	0	0	0	0
Effective Reset hours	0	0	0	0	0	0	0	0
Required hours	2038.00	2209.00	2184.00	2183.00	2208.00	2209.00	1680.02	2044.89
Train 3								
Planned unavailable hours	8.43	1.00	28.00	0.78	0.53	3.24	7.44	0.65
Unplanned unavailable hours	0	0	0	0	0	0	0	0
Fault exposure hours	0	0	0	0	0	0	0	0
Effective Reset hours	0	0	0	0	0	0	0	0
Required hours	2038.00	2209.00	2184.00	2183.00	2208.00	2209.00	1680.02	2044.89
Indicator value	0.4%	0.4%	0.5%	0.4%	0.4%	0.4%	0.4%	0.4%

Licensee Comments: none

Safety System Unavailability, Residual Heat Removal System



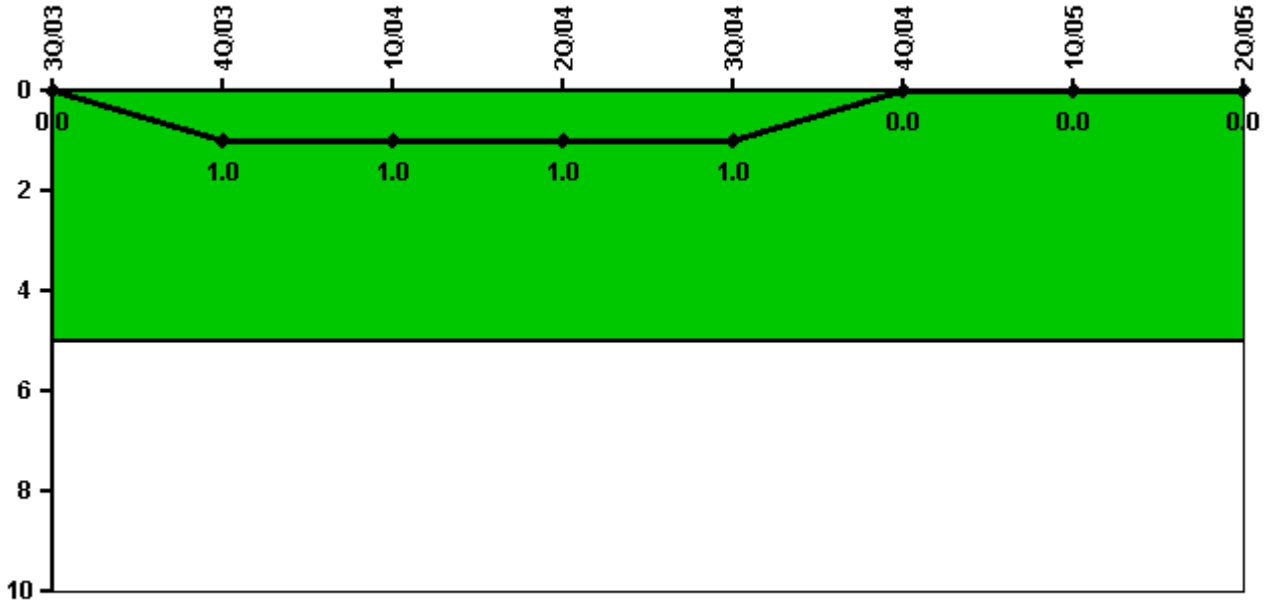
Thresholds: White > 1.5% Yellow > 5.0% Red > 10.0%

Notes

Safety System Unavailability, Residual Heat Removal System	3Q/03	4Q/03	1Q/04	2Q/04	3Q/04	4Q/04	1Q/05	2Q/05
Train 1								
Planned unavailable hours	0	0	3.75	13.10	0	0	4.55	9.00
Unplanned unavailable hours	0	0	0	0	0	0	0	0
Fault exposure hours	0	0	0	0	0	0	0	0
Effective Reset hours	0	0	0	0	0	0	0	0
Required hours	2208.00	2209.00	2184.00	2183.00	2208.00	2209.00	2040.00	2183.00
Train 2								
Planned unavailable hours	13.32	0	7.00	0.10	0	0	0	0
Unplanned unavailable hours	0	0	0	0	0	0	0	0
Fault exposure hours	0	0	0	0	0	0	0	0
Effective Reset hours	0	0	0	0	0	0	0	0
Required hours	2208.00	2209.00	2184.00	2183.00	2208.00	2209.00	2040.00	2183.00
Train 3								
Planned unavailable hours	0	0	0	0	0	0	0	0
Unplanned unavailable hours	0	0	0	0	0	0	0	0
Fault exposure hours	0	0	0	0	0	0	0	0
Effective Reset hours	0	0	0	0	0	0	0	0
Required hours	2038.00	2209.00	2184.00	2183.00	2208.00	2209.00	1680.00	2025.89
Train 4								
Planned unavailable hours	0	0	0	0	0	0	0	0
Unplanned unavailable hours	0	0	0	0	0	0	0	0
Fault exposure hours	0	0	0	0	0	0	0	0
Effective Reset hours	0	0	0	0	0	0	0	0
Required hours	2038.00	2209.00	2184.00	2183.00	2208.00	2209.00	1680.00	2025.89
Indicator value	0.1%	0.1%	0.1%	0.1%	0%	0%	0%	0%

Licensee Comments: none

Safety System Functional Failures (PWR)



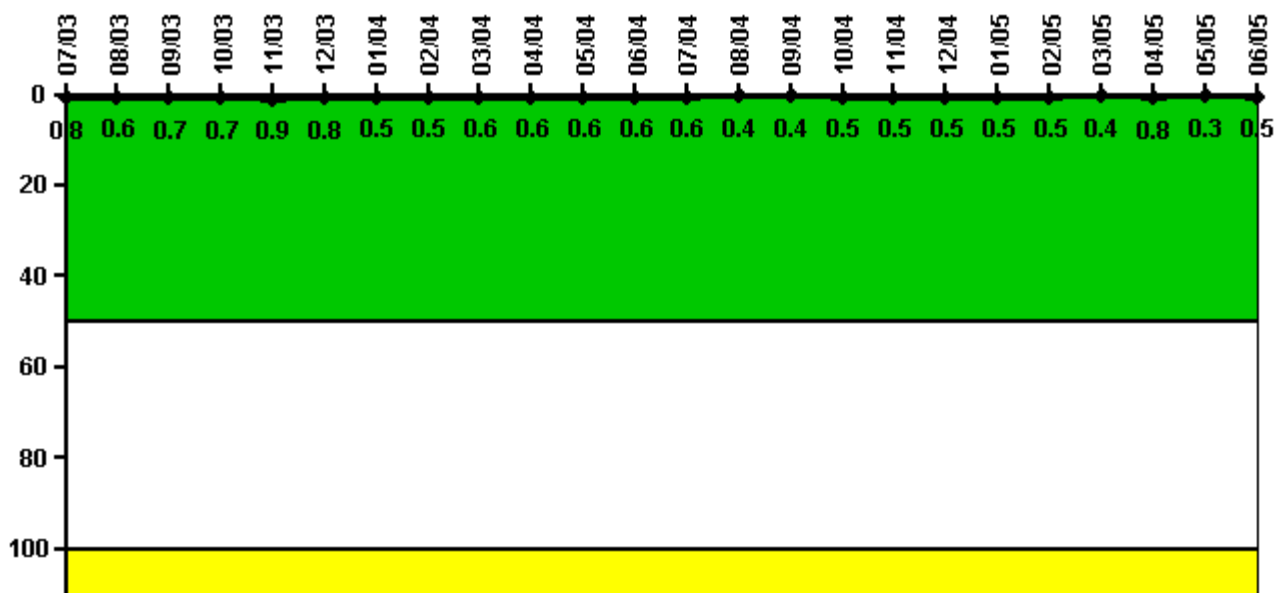
Thresholds: White > 5.0

Notes

Safety System Functional Failures (PWR)	3Q/03	4Q/03	1Q/04	2Q/04	3Q/04	4Q/04	1Q/05	2Q/05
Safety System Functional Failures	0	1	0	0	0	0	0	0
Indicator value	0	1	1	1	1	0	0	0

Licensee Comments: none

Reactor Coolant System Leakage



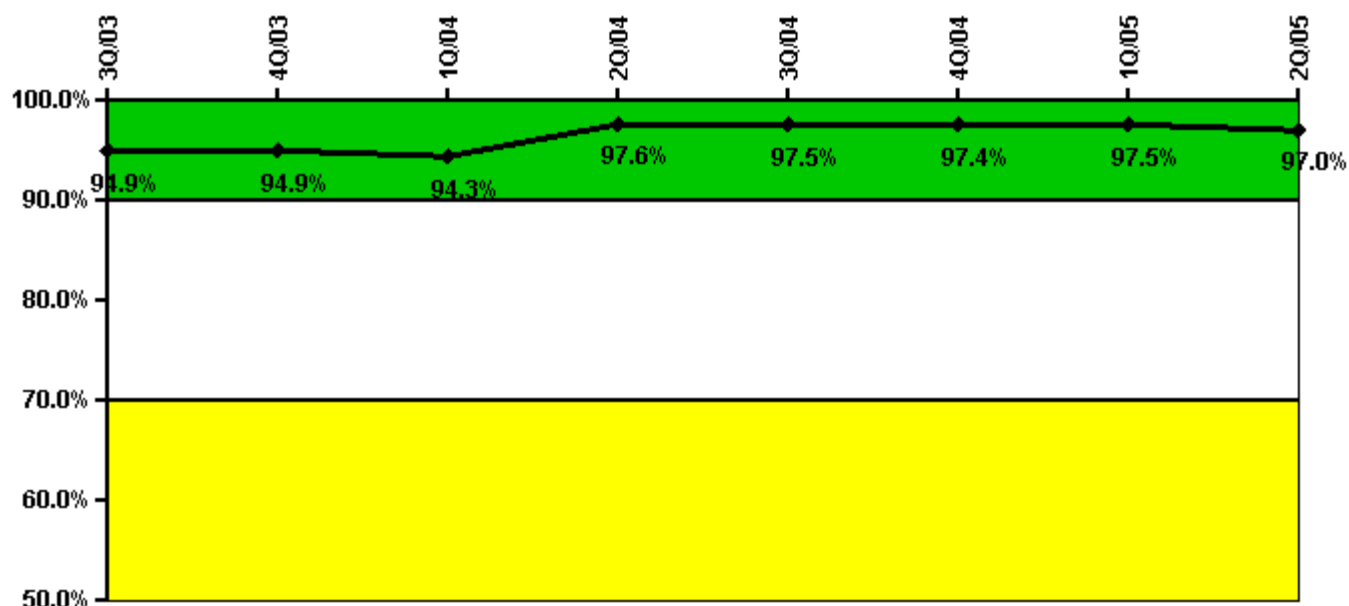
Thresholds: White > 50.0 Yellow > 100.0

Notes

Reactor Coolant System Leakage	7/03	8/03	9/03	10/03	11/03	12/03	1/04	2/04	3/04	4/04	5/04	6/04
Maximum leakage	0.080	0.062	0.070	0.065	0.087	0.076	0.050	0.045	0.060	0.060	0.057	0.060
Technical specification limit	10.0	10.0	10.0	10.0	10.0	10.0	10.0	10.0	10.0	10.0	10.0	10.0
Indicator value	0.8	0.6	0.7	0.7	0.9	0.8	0.5	0.5	0.6	0.6	0.6	0.6
Reactor Coolant System Leakage	7/04	8/04	9/04	10/04	11/04	12/04	1/05	2/05	3/05	4/05	5/05	6/05
Maximum leakage	0.060	0.037	0.037	0.050	0.050	0.050	0.050	0.050	0.040	0.080	0.030	0.050
Technical specification limit	10.0	10.0	10.0	10.0	10.0	10.0	10.0	10.0	10.0	10.0	10.0	10.0
Indicator value	0.6	0.4	0.4	0.5	0.5	0.5	0.5	0.5	0.4	0.8	0.3	0.5

Licensee Comments: none

Drill/Exercise Performance



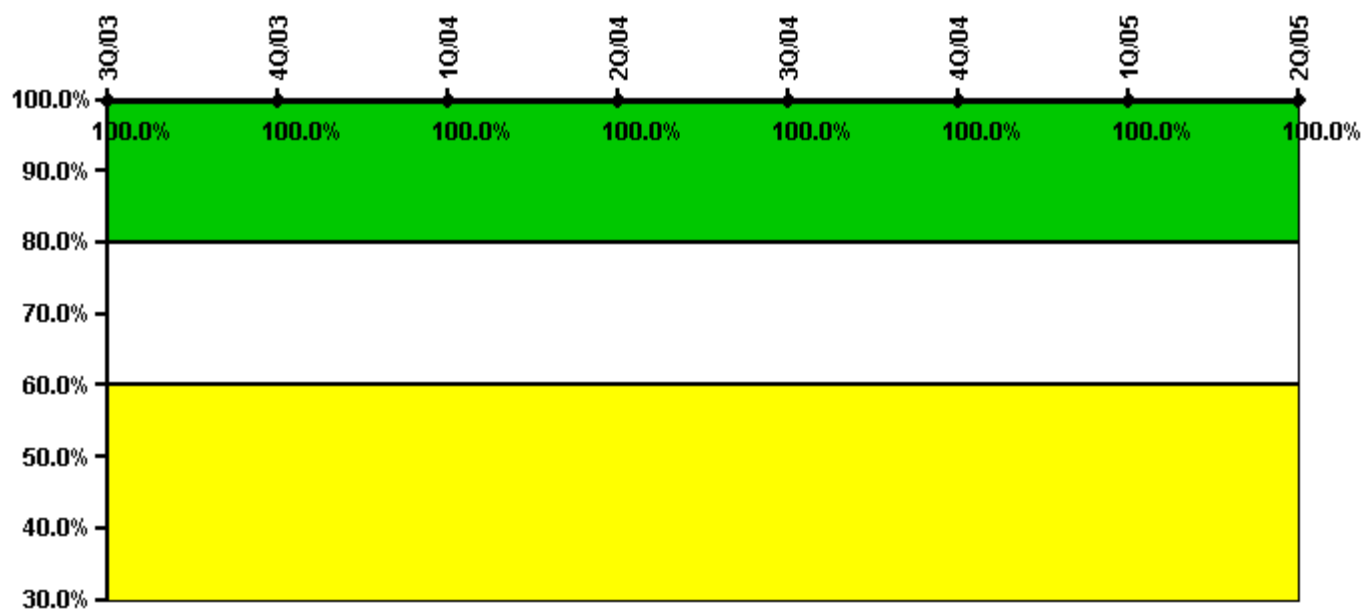
Thresholds: White < 90.0% Yellow < 70.0%

Notes

Drill/Exercise Performance	3Q/03	4Q/03	1Q/04	2Q/04	3Q/04	4Q/04	1Q/05	2Q/05
Successful opportunities	32.0	14.0	19.0	51.0	18.0	2.0	15.0	12.0
Total opportunities	34.0	14.0	20.0	52.0	18.0	2.0	15.0	13.0
Indicator value	94.9%	94.9%	94.3%	97.6%	97.5%	97.4%	97.5%	97.0%

Licensee Comments: none

ERO Drill Participation



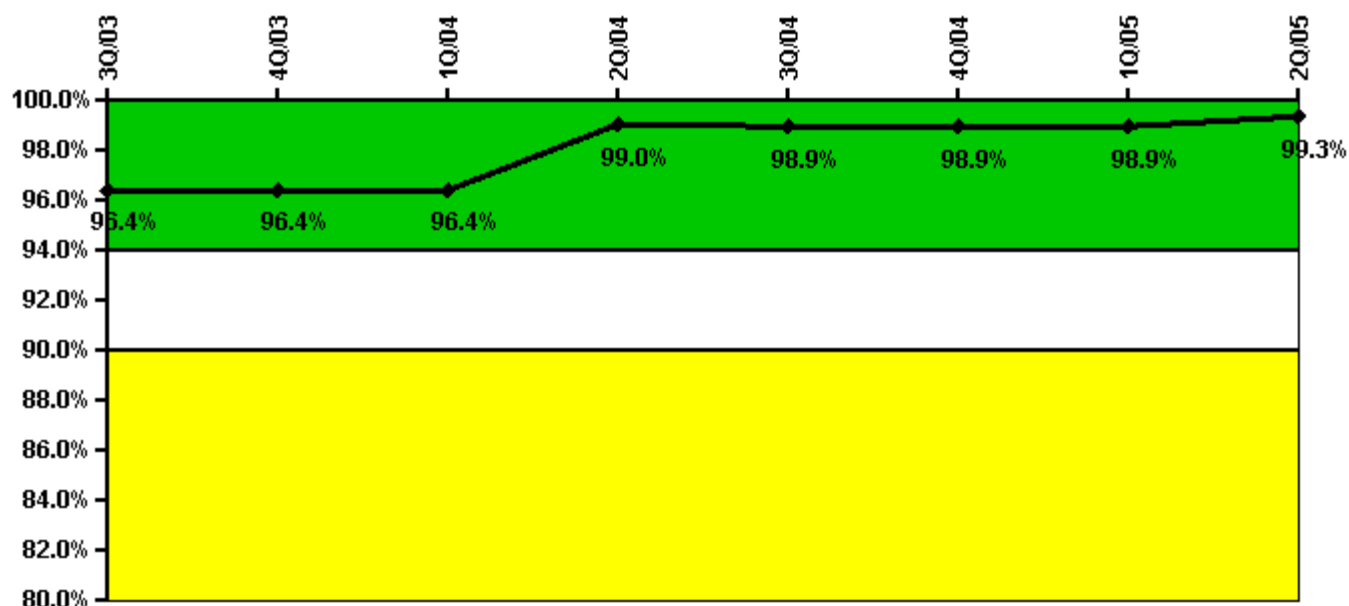
Thresholds: White < 80.0% Yellow < 60.0%

Notes

ERO Drill Participation	3Q/03	4Q/03	1Q/04	2Q/04	3Q/04	4Q/04	1Q/05	2Q/05
Participating Key personnel	47.0	47.0	47.0	60.0	57.0	58.0	57.0	95.0
Total Key personnel	47.0	47.0	47.0	60.0	57.0	58.0	57.0	95.0
Indicator value	100.0%	100.0%	100.0%	100.0%	100.0%	100.0%	100.0%	100.0%

Licensee Comments: none

Alert & Notification System



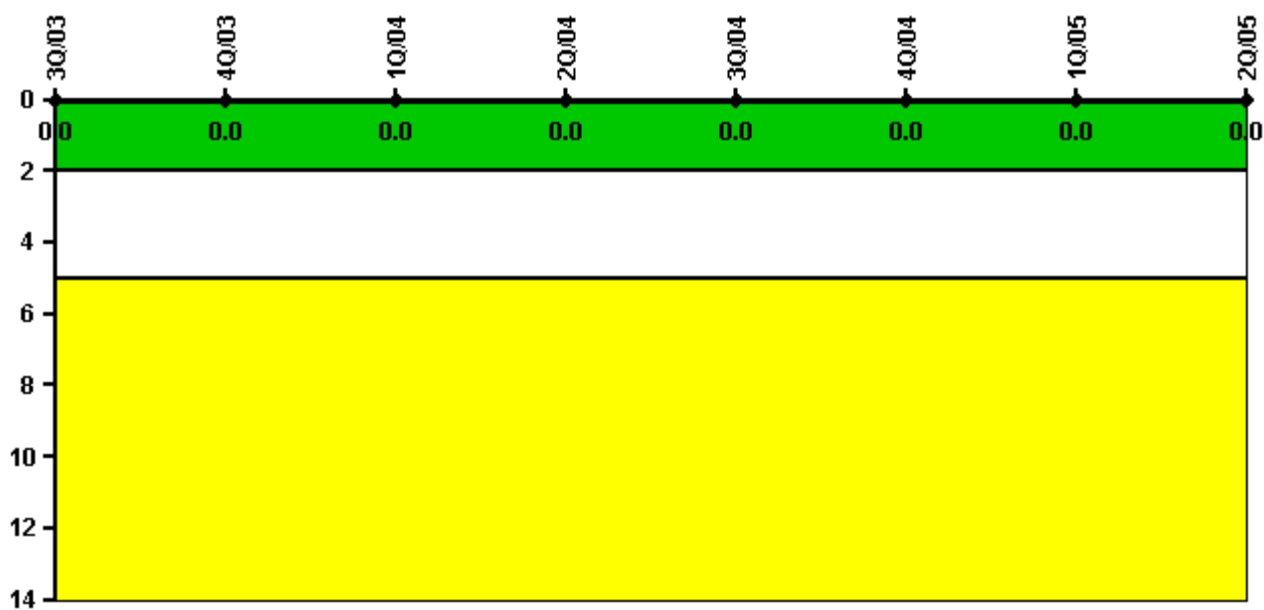
Thresholds: White < 94.0% Yellow < 90.0%

Notes

Alert & Notification System	3Q/03	4Q/03	1Q/04	2Q/04	3Q/04	4Q/04	1Q/05	2Q/05
Successful siren-tests	1222	1224	1070	1217	1233	954	1134	1014
Total sirens-tests	1232	1232	1078	1241	1244	962	1143	1015
Indicator value	96.4%	96.4%	96.4%	99.0%	98.9%	98.9%	98.9%	99.3%

Licensee Comments: none

Occupational Exposure Control Effectiveness



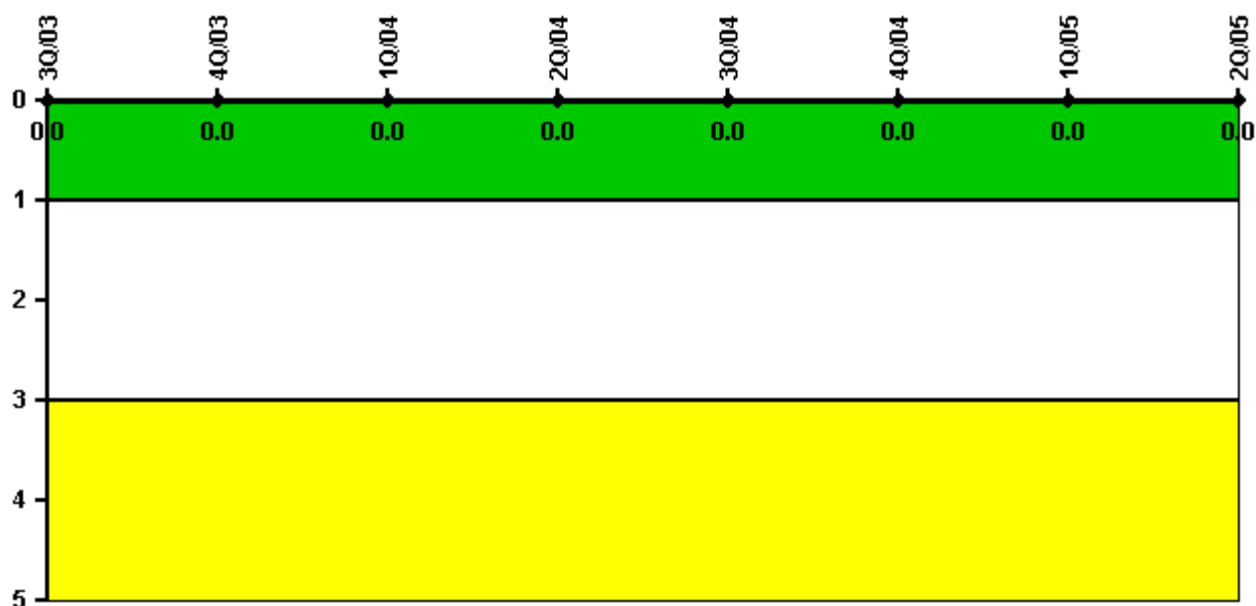
Thresholds: White > 2.0 Yellow > 5.0

Notes

Occupational Exposure Control Effectiveness	3Q/03	4Q/03	1Q/04	2Q/04	3Q/04	4Q/04	1Q/05	2Q/05
High radiation area occurrences	0	0	0	0	0	0	0	0
Very high radiation area occurrences	0	0	0	0	0	0	0	0
Unintended exposure occurrences	0	0	0	0	0	0	0	0
Indicator value	0	0	0	0	0	0	0	0

Licensee Comments: none

RETS/ODCM Radiological Effluent



Thresholds: White > 1.0 Yellow > 3.0

Notes

RETS/ODCM Radiological Effluent	3Q/03	4Q/03	1Q/04	2Q/04	3Q/04	4Q/04	1Q/05	2Q/05
RETS/ODCM occurrences	0	0	0	0	0	0	0	0
Indicator value	0	0	0	0	0	0	0	0

Licensee Comments: none

[Physical Protection](#) information not publicly available.