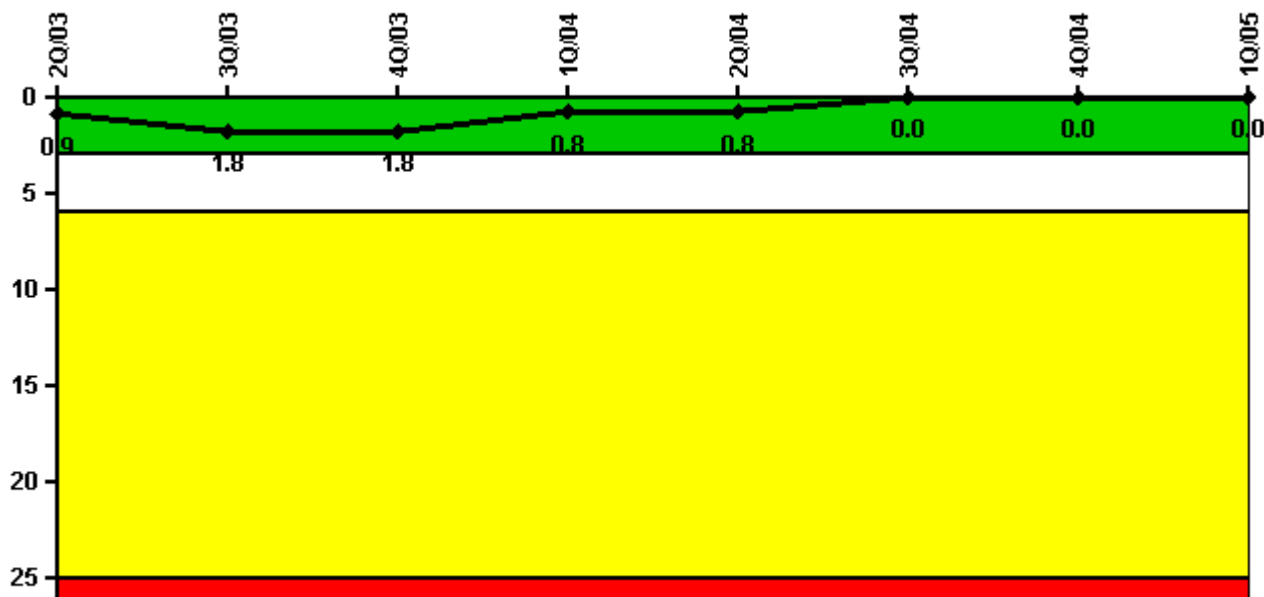


## La Salle 2

### 1Q/2005 Performance Indicators

Licensee's General Comments: none

#### Unplanned Scrams per 7000 Critical Hrs



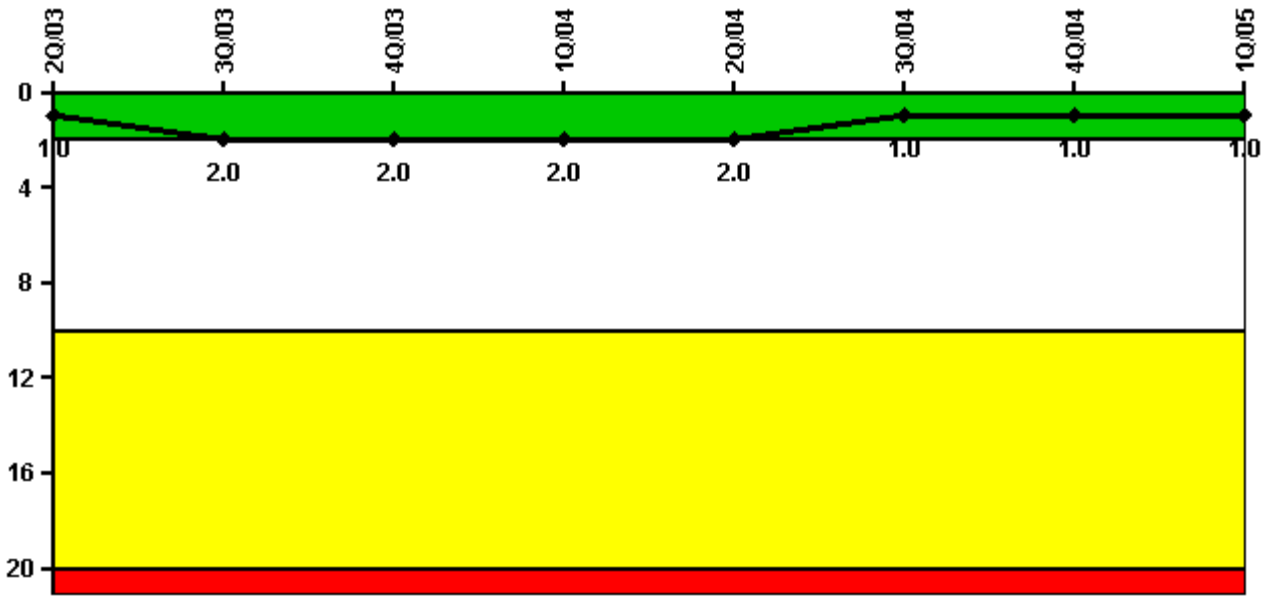
Thresholds: White > 3.0 Yellow > 6.0 Red > 25.0

#### Notes

Unplanned Scrams per 7000 Critical Hrs	2Q/03	3Q/03	4Q/03	1Q/04	2Q/04	3Q/04	4Q/04	1Q/05
Unplanned scrams	0	1.0	0	0	0	0	0	0
Critical hours	2183.0	2111.4	2209.0	2184.0	2183.0	2208.0	2209.0	1289.5
Indicator value	0.9	1.8	1.8	0.8	0.8	0	0	0

Licensee Comments: none

### Scrams with Loss of Normal Heat Removal



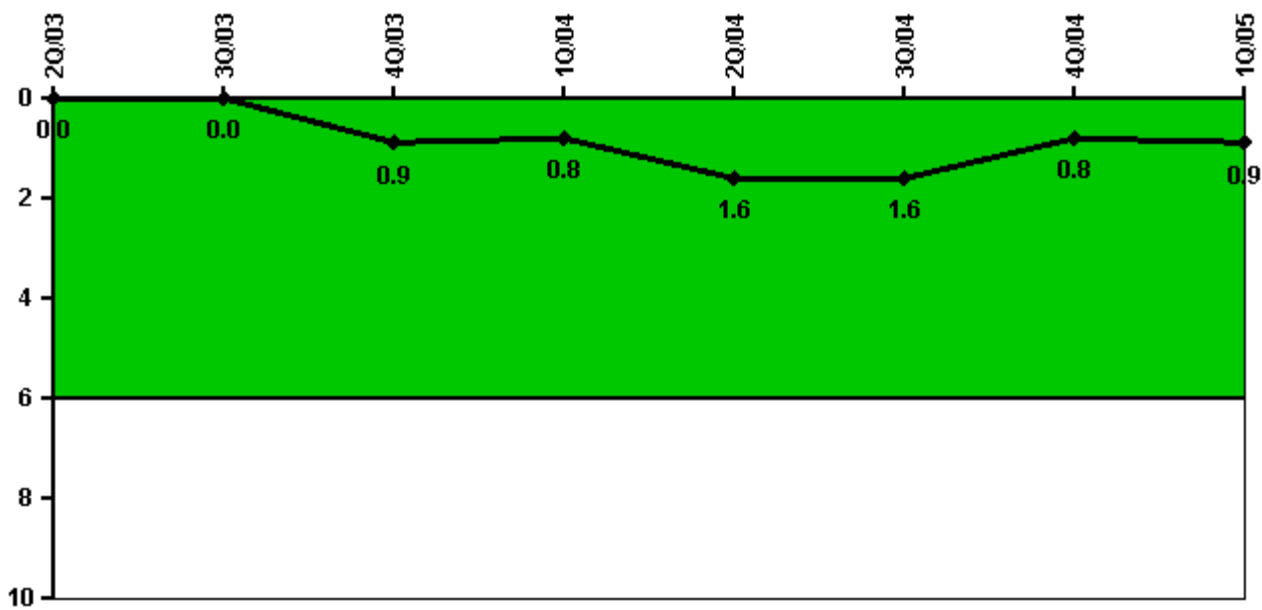
Thresholds: White > 2.0 Yellow > 10.0 Red > 20.0

#### Notes

Scrams with Loss of Normal Heat Removal	2Q/03	3Q/03	4Q/03	1Q/04	2Q/04	3Q/04	4Q/04	1Q/05
Scrams	0	1.0	0	0	0	0	0	0
Indicator value	1.0	2.0	2.0	2.0	2.0	1.0	1.0	1.0

Licensee Comments: none

### Unplanned Power Changes per 7000 Critical Hrs



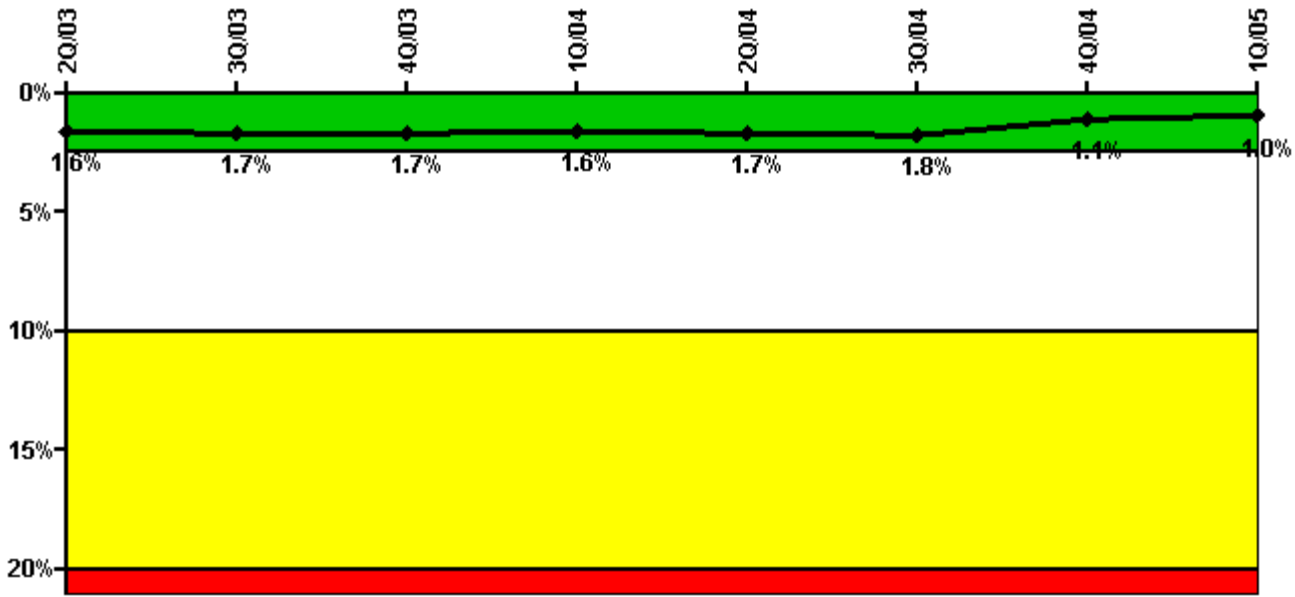
Thresholds: White > 6.0

#### Notes

Unplanned Power Changes per 7000 Critical Hrs	2Q/03	3Q/03	4Q/03	1Q/04	2Q/04	3Q/04	4Q/04	1Q/05
Unplanned power changes	0	0	1.0	0	1.0	0	0	0
Critical hours	2183.0	2111.4	2209.0	2184.0	2183.0	2208.0	2209.0	1289.5
Indicator value	0	0	0.9	0.8	1.6	1.6	0.8	0.9

Licensee Comments: none

### Safety System Unavailability, Emergency AC Power, >2EDG



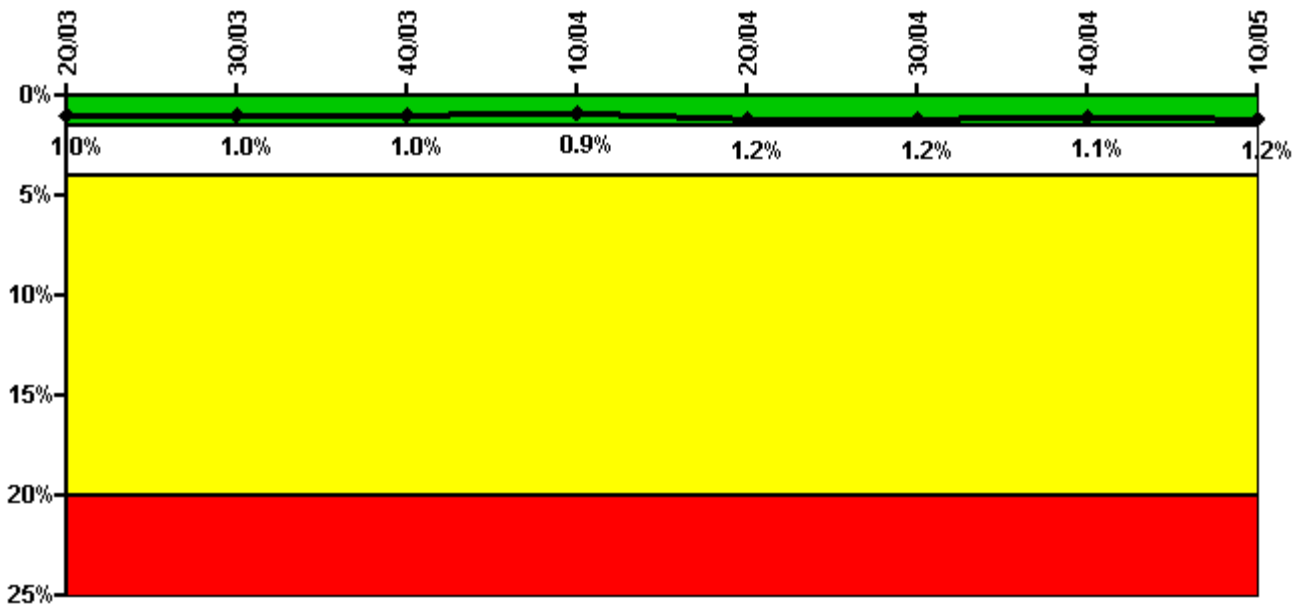
Thresholds: White > 2.5% Yellow > 10.0% Red > 20.0%

#### Notes

Safety System Unavailability, Emergency AC Power, >2EDG	2Q/03	3Q/03	4Q/03	1Q/04	2Q/04	3Q/04	4Q/04	1Q/05
<b>Train 1</b>								
Planned unavailable hours	21.60	43.63	7.52	1.25	58.03	7.65	14.42	0.50
Unplanned unavailable hours	51.15	0	0	0	0	0	0	0
Fault exposure hours	0	0	0	0	0	0	0	0
Effective Reset hours	0	0	0	0	0	0	0	0
Required hours	2183.00	2208.00	2209.00	2184.00	2183.00	2208.00	2209.00	2160.00
<b>Train 2</b>								
Planned unavailable hours	2.72	0.75	0.75	36.82	0.75	5.33	0.75	0.50
Unplanned unavailable hours	0	0	0	0	0	0	21.72	0
Fault exposure hours	0	0	0	0	0	0	0	0
Effective Reset hours	0	0	0	0	0	0	0	0
Required hours	2183.00	2208.00	2209.00	2184.00	2183.00	2208.00	2209.00	2160.00
<b>Train 3</b>								
Planned unavailable hours	0.75	0.75	2.12	0.75	76.72	5.17	0.75	0.50
Unplanned unavailable hours	0	0	0	0	0	12.45	0	0
Fault exposure hours	0	0	0	0	0	0	0	0
Effective Reset hours	0	0	0	0	0	0	0	0
Required hours	2183.00	2208.00	2209.00	2184.00	2183.00	2208.00	2209.00	2160.00
<b>Indicator value</b>	<b>1.6%</b>	<b>1.7%</b>	<b>1.7%</b>	<b>1.6%</b>	<b>1.7%</b>	<b>1.8%</b>	<b>1.1%</b>	<b>1.0%</b>

Licensee Comments: none

### Safety System Unavailability, High Pressure Injection System (HPCS)



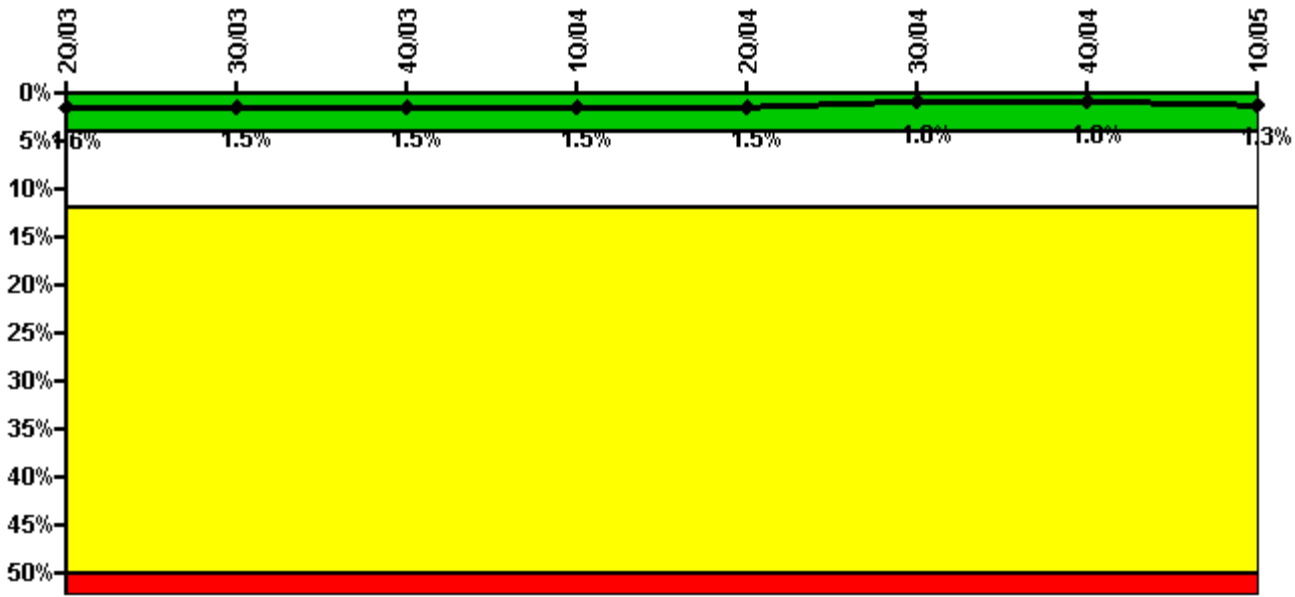
Thresholds: White > 1.5% Yellow > 4.0% Red > 20.0%

#### Notes

Safety System Unavailability, High Pressure Injection System (HPCS)	2Q/03	3Q/03	4Q/03	1Q/04	2Q/04	3Q/04	4Q/04	1Q/05
<b>Train 1</b>								
Planned unavailable hours	0	0	0	0	88.35	0	13.25	0
Unplanned unavailable hours	0	0	0	0	0	0	0	0
Fault exposure hours	0	0	0	0	0	0	0	0
Effective Reset hours	0	0	0	0	0	0	0	0
Required hours	2183.00	2111.40	2209.00	2184.00	2183.00	2208.00	2209.00	1289.47
<b>Indicator value</b>	<b>1.0%</b>	<b>1.0%</b>	<b>1.0%</b>	<b>0.9%</b>	<b>1.2%</b>	<b>1.2%</b>	<b>1.1%</b>	<b>1.2%</b>

Licensee Comments: none

### Safety System Unavailability, Heat Removal System (RCIC)



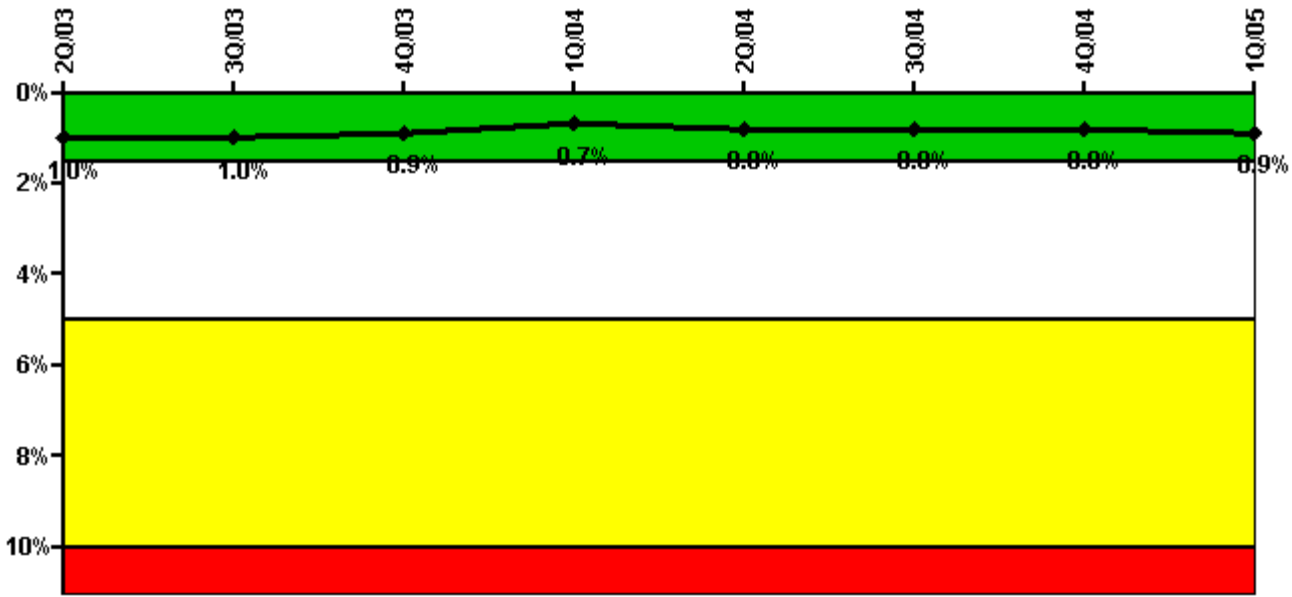
Thresholds: White > 4.0% Yellow > 12.0% Red > 50.0%

#### Notes

Safety System Unavailability, Heat Removal System (RCIC)	2Q/03	3Q/03	4Q/03	1Q/04	2Q/04	3Q/04	4Q/04	1Q/05
<b>Train 1</b>								
Planned unavailable hours	13.50	1.53	0	49.95	45.26	0	14.90	40.30
Unplanned unavailable hours	13.30	0	0	0	0	0	0	16.97
Fault exposure hours	0	0	0	0	0	0	0	0
Effective Reset hours	0	0	0	0	0	0	0	0
Required hours	2183.00	2111.40	2209.00	2184.00	2183.00	2208.00	2209.00	1289.47
<b>Indicator value</b>	<b>1.6%</b>	<b>1.5%</b>	<b>1.5%</b>	<b>1.5%</b>	<b>1.5%</b>	<b>1.0%</b>	<b>1.0%</b>	<b>1.3%</b>

Licensee Comments: none

### Safety System Unavailability, Residual Heat Removal System



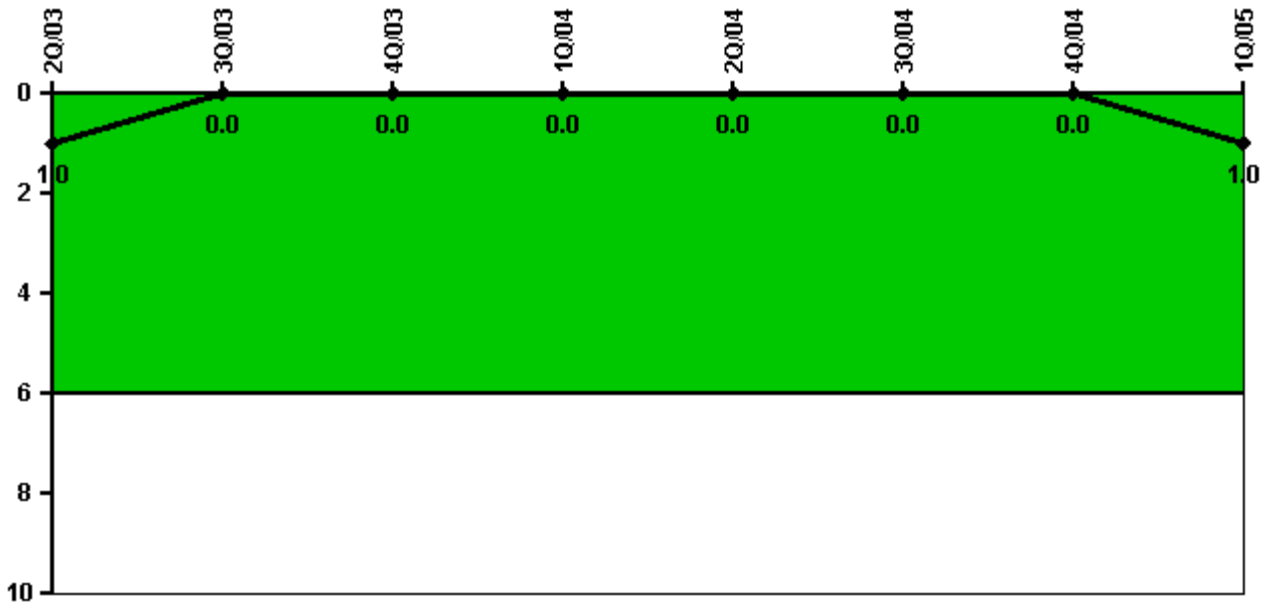
Thresholds: White > 1.5% Yellow > 5.0% Red > 10.0%

**Notes**

Safety System Unavailability, Residual Heat Removal System	2Q/03	3Q/03	4Q/03	1Q/04	2Q/04	3Q/04	4Q/04	1Q/05
<b>Train 1</b>								
Planned unavailable hours	0	25.70	0	0	10.93	7.18	44.82	27.26
Unplanned unavailable hours	0	0	0	0	0	0	0	0
Fault exposure hours	0	0	0	0	0	0	0	0
Effective Reset hours	0	0	0	0	0	0	0	0
Required hours	2183.00	2208.00	2209.00	2184.00	2183.00	2208.00	2209.00	2160.00
<b>Train 2</b>								
Planned unavailable hours	40.90	15.20	0	12.75	30.33	0	0	9.72
Unplanned unavailable hours	0	0	0	0	0	0	0	0
Fault exposure hours	0	0	0	0	0	0	0	0
Effective Reset hours	0	0	0	0	0	0	0	0
Required hours	2183.00	2208.00	2209.00	2184.00	2183.00	2208.00	2209.00	2160.00
<b>Indicator value</b>	<b>1.0%</b>	<b>1.0%</b>	<b>0.9%</b>	<b>0.7%</b>	<b>0.8%</b>	<b>0.8%</b>	<b>0.8%</b>	<b>0.9%</b>

Licensee Comments: none

### Safety System Functional Failures (BWR)



Thresholds: White > 6.0

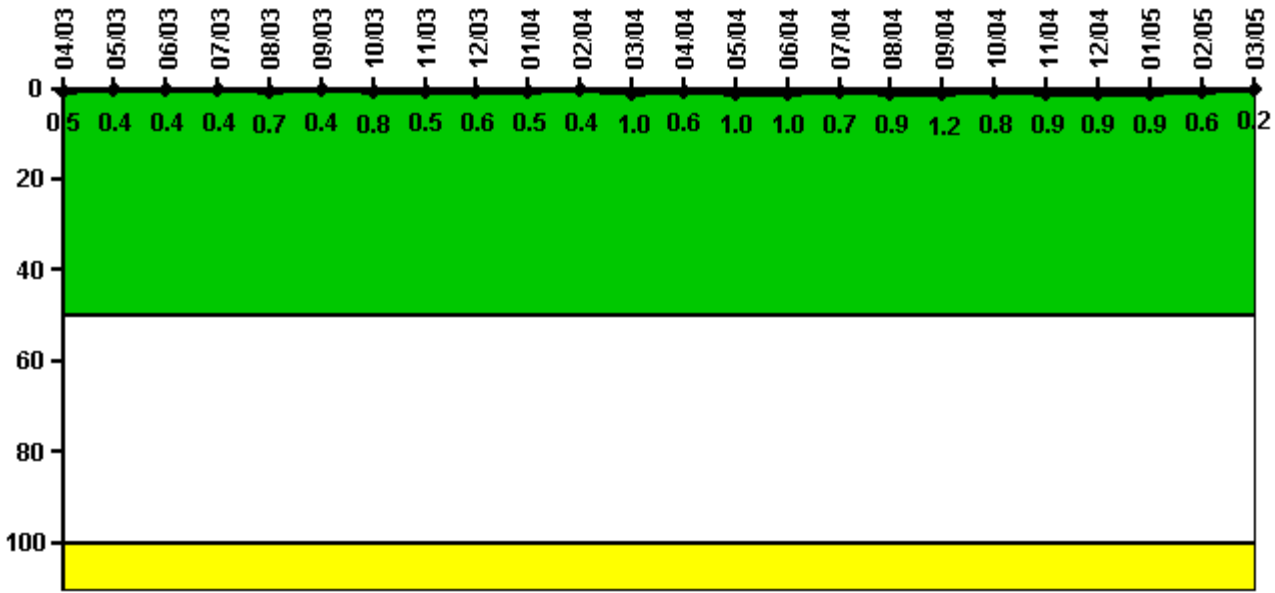
#### Notes

Safety System Functional Failures (BWR)	2Q/03	3Q/03	4Q/03	1Q/04	2Q/04	3Q/04	4Q/04	1Q/05
Safety System Functional Failures	0	0	0	0	0	0	0	1
Indicator value	1	0	0	0	0	0	0	1

Licensee Comments: none



### Reactor Coolant System Activity



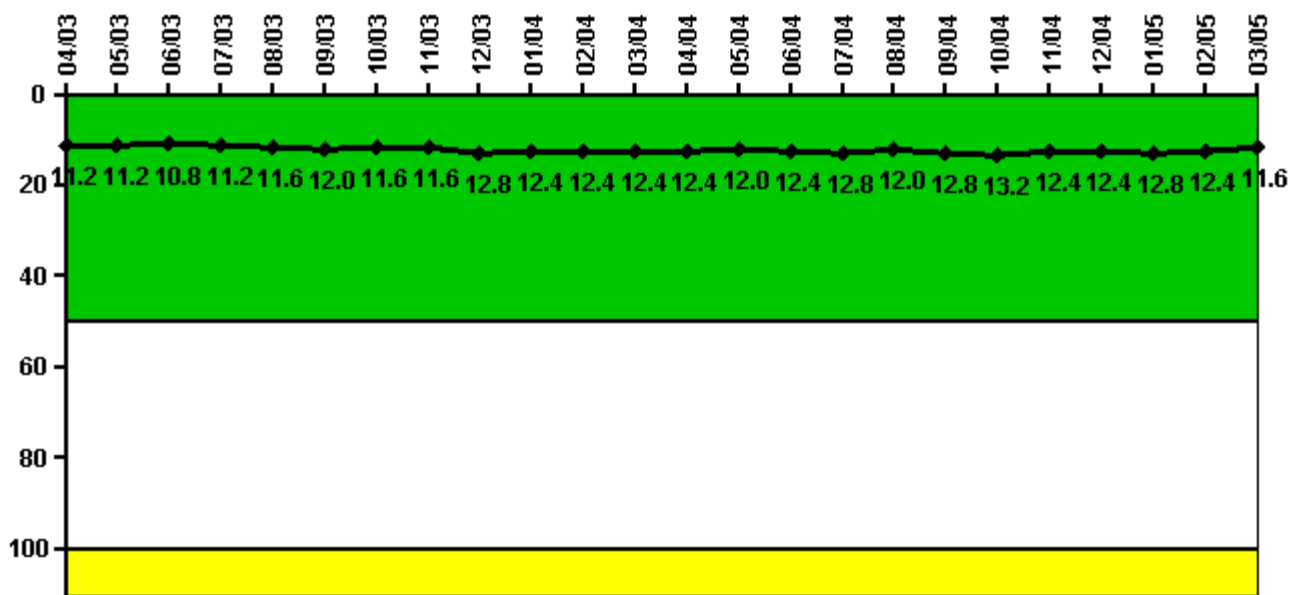
Thresholds: White > 50.0 Yellow > 100.0

#### Notes

Reactor Coolant System Activity	4/03	5/03	6/03	7/03	8/03	9/03	10/03	11/03	12/03	1/04	2/04	3/04
Maximum activity	0.001000	0.000731	0.000839	0.000744	0.001460	0.000786	0.001570	0.001000	0.001140	0.000985	0.000877	0.001950
Technical specification limit	0.2	0.2	0.2	0.2	0.2	0.2	0.2	0.2	0.2	0.2	0.2	0.2
Indicator value	0.5	0.4	0.4	0.4	0.7	0.4	0.8	0.5	0.6	0.5	0.4	1.0
Reactor Coolant System Activity	4/04	5/04	6/04	7/04	8/04	9/04	10/04	11/04	12/04	1/05	2/05	3/05
Maximum activity	0.001120	0.002040	0.002070	0.001410	0.001810	0.002300	0.001540	0.001790	0.001860	0.001740	0.001210	0.000491
Technical specification limit	0.2	0.2	0.2	0.2	0.2	0.2	0.2	0.2	0.2	0.2	0.2	0.2
Indicator value	0.6	1.0	1.0	0.7	0.9	1.2	0.8	0.9	0.9	0.9	0.6	0.2

Licensee Comments: none

### Reactor Coolant System Leakage



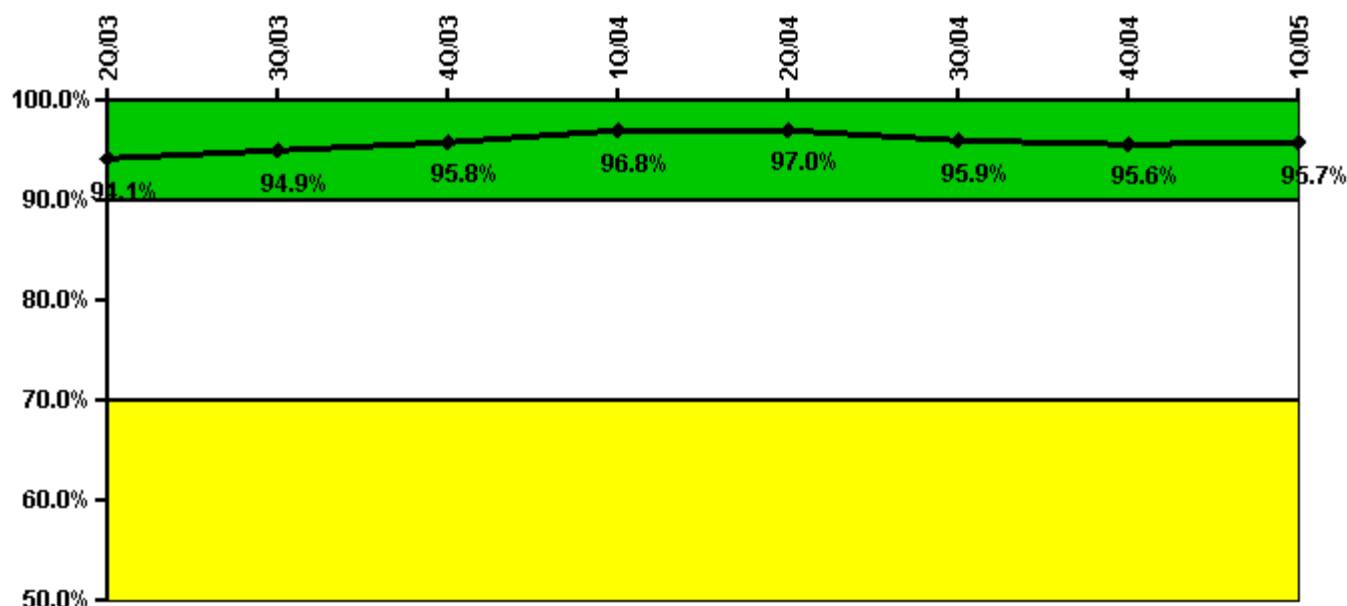
Thresholds: White > 50.0 Yellow > 100.0

#### Notes

Reactor Coolant System Leakage	4/03	5/03	6/03	7/03	8/03	9/03	10/03	11/03	12/03	1/04	2/04	3/04
Maximum leakage	2.800	2.800	2.700	2.800	2.900	3.000	2.900	2.900	3.200	3.100	3.100	3.100
Technical specification limit	25.0	25.0	25.0	25.0	25.0	25.0	25.0	25.0	25.0	25.0	25.0	25.0
Indicator value	11.2	11.2	10.8	11.2	11.6	12.0	11.6	11.6	12.8	12.4	12.4	12.4
Reactor Coolant System Leakage	4/04	5/04	6/04	7/04	8/04	9/04	10/04	11/04	12/04	1/05	2/05	3/05
Maximum leakage	3.100	3.000	3.100	3.200	3.000	3.200	3.300	3.100	3.100	3.200	3.100	2.900
Technical specification limit	25.0	25.0	25.0	25.0	25.0	25.0	25.0	25.0	25.0	25.0	25.0	25.0
Indicator value	12.4	12.0	12.4	12.8	12.0	12.8	13.2	12.4	12.4	12.8	12.4	11.6

Licensee Comments: none

### Drill/Exercise Performance



Thresholds: White < 90.0% Yellow < 70.0%

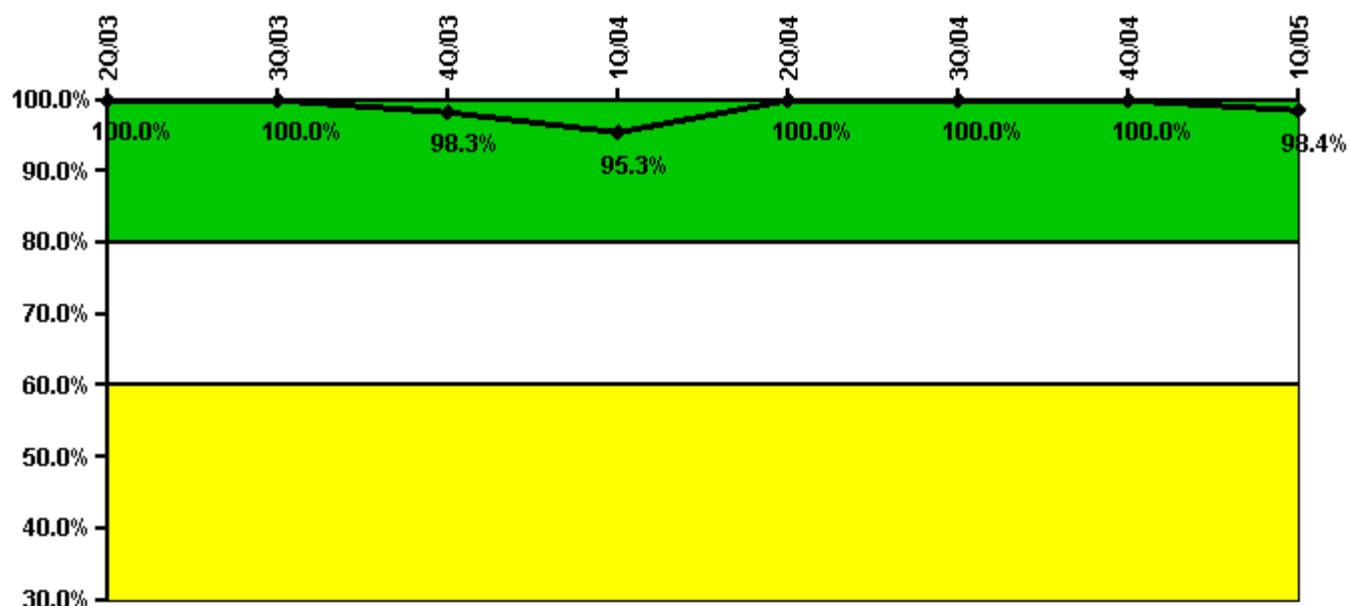
#### Notes

Drill/Exercise Performance	2Q/03	3Q/03	4Q/03	1Q/04	2Q/04	3Q/04	4Q/04	1Q/05
Successful opportunities	46.0	45.0	32.0	30.0	29.0	48.0	60.0	2.0
Total opportunities	47.0	48.0	32.0	30.0	30.0	52.0	64.0	2.0
Indicator value	94.1%	94.9%	95.8%	96.8%	97.0%	95.9%	95.6%	95.7%

Licensee Comments:

1Q/05: The ERO Drill/Exercise Performance PI Data for November 2004 has been revised to 40 successes out of 42 opportunities, up from 37 successes out of 39 opportunities. Three additional opportunities and successes were identified during a recent assessment. This occurrence has been entered into the corrective action program.

### ERO Drill Participation



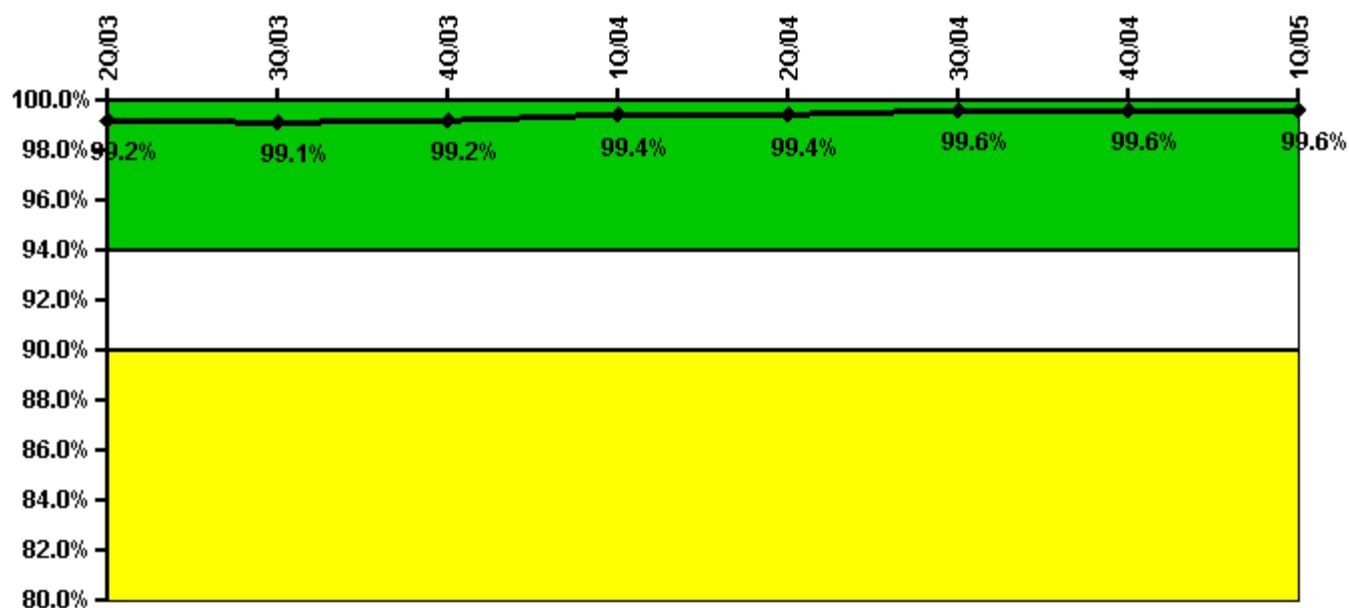
Thresholds: White < 80.0% Yellow < 60.0%

#### Notes

ERO Drill Participation	2Q/03	3Q/03	4Q/03	1Q/04	2Q/04	3Q/04	4Q/04	1Q/05
Participating Key personnel	53.0	56.0	59.0	61.0	65.0	64.0	67.0	62.0
Total Key personnel	53.0	56.0	60.0	64.0	65.0	64.0	67.0	63.0
Indicator value	100.0%	100.0%	98.3%	95.3%	100.0%	100.0%	100.0%	98.4%

Licensee Comments: none

### Alert & Notification System



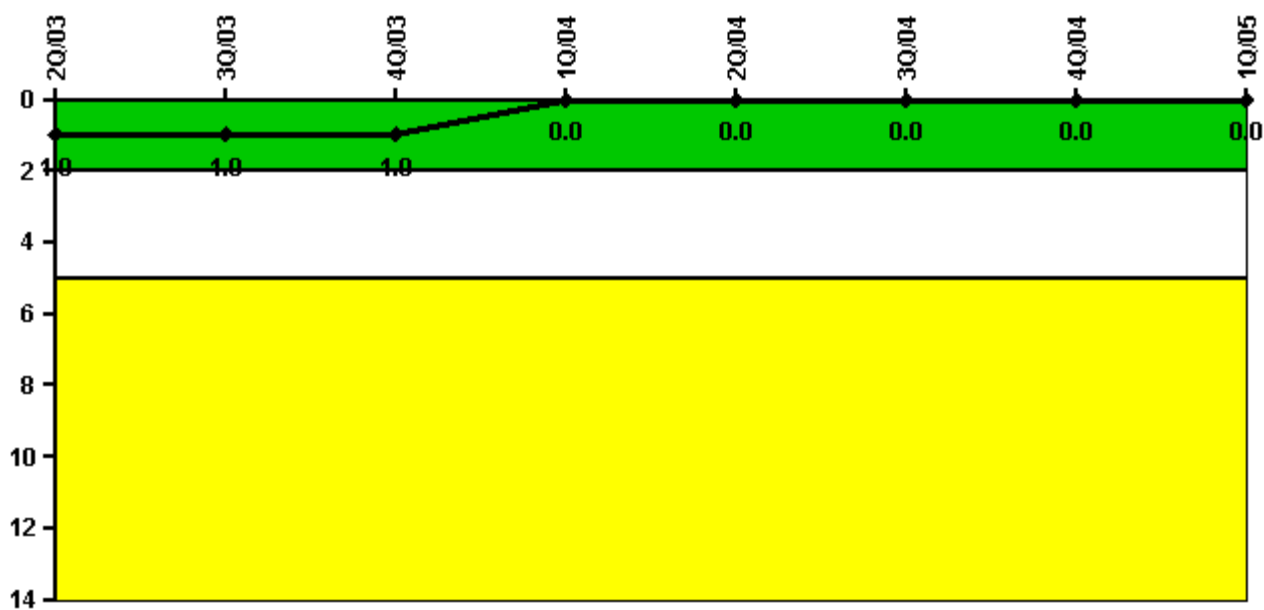
Thresholds: White < 94.0% Yellow < 90.0%

#### Notes

Alert & Notification System	2Q/03	3Q/03	4Q/03	1Q/04	2Q/04	3Q/04	4Q/04	1Q/05
Successful siren-tests	3173	3159	3192	3194	3180	3230	3245	3195
Total sirens-tests	3200	3200	3200	3200	3200	3250	3250	3200
Indicator value	99.2%	99.1%	99.2%	99.4%	99.4%	99.6%	99.6%	99.6%

Licensee Comments: none

### Occupational Exposure Control Effectiveness



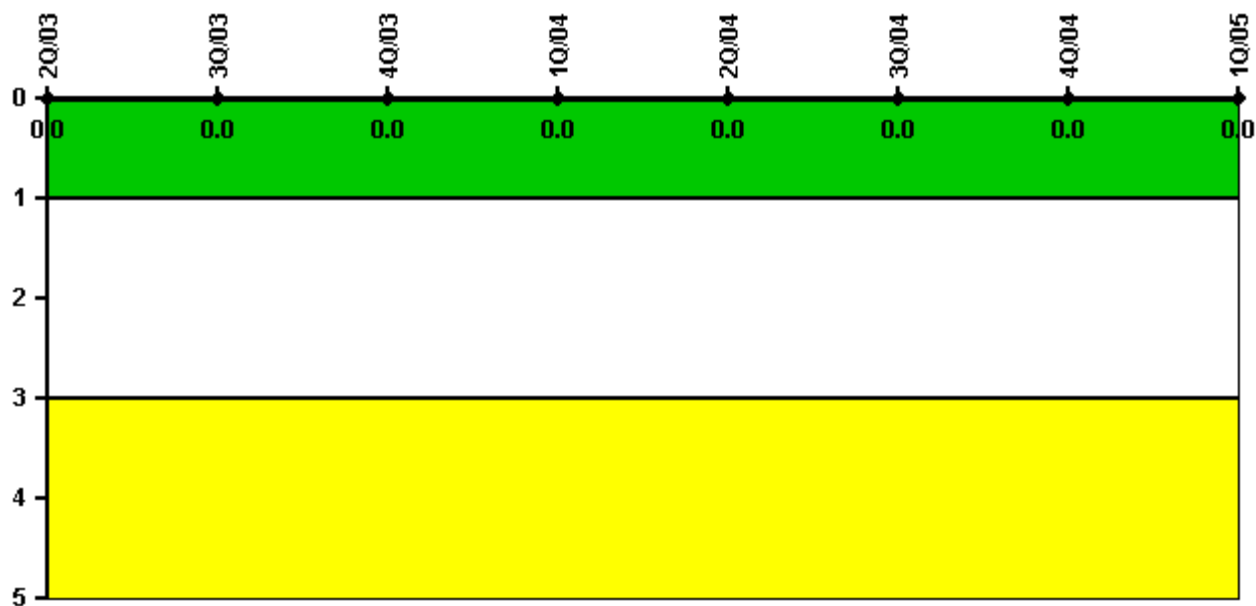
Thresholds: White > 2.0 Yellow > 5.0

#### Notes

Occupational Exposure Control Effectiveness	2Q/03	3Q/03	4Q/03	1Q/04	2Q/04	3Q/04	4Q/04	1Q/05
High radiation area occurrences	0	0	0	0	0	0	0	0
Very high radiation area occurrences	0	0	0	0	0	0	0	0
Unintended exposure occurrences	0	0	0	0	0	0	0	0
<b>Indicator value</b>	<b>1</b>	<b>1</b>	<b>1</b>	<b>0</b>	<b>0</b>	<b>0</b>	<b>0</b>	<b>0</b>

Licensee Comments: none

### RETS/ODCM Radiological Effluent



Thresholds: White > 1.0 Yellow > 3.0

#### Notes

RETS/ODCM Radiological Effluent	2Q/03	3Q/03	4Q/03	1Q/04	2Q/04	3Q/04	4Q/04	1Q/05
RETS/ODCM occurrences	0	0	0	0	0	0	0	0
Indicator value	0	0	0	0	0	0	0	0

Licensee Comments: none

[Physical Protection](#) information not publicly available.

▲ [Action Matrix Summary](#) | [Inspection Findings Summary](#) | [PI Summary](#) | [Reactor Oversight Process](#)

Last Modified: June 17, 2005