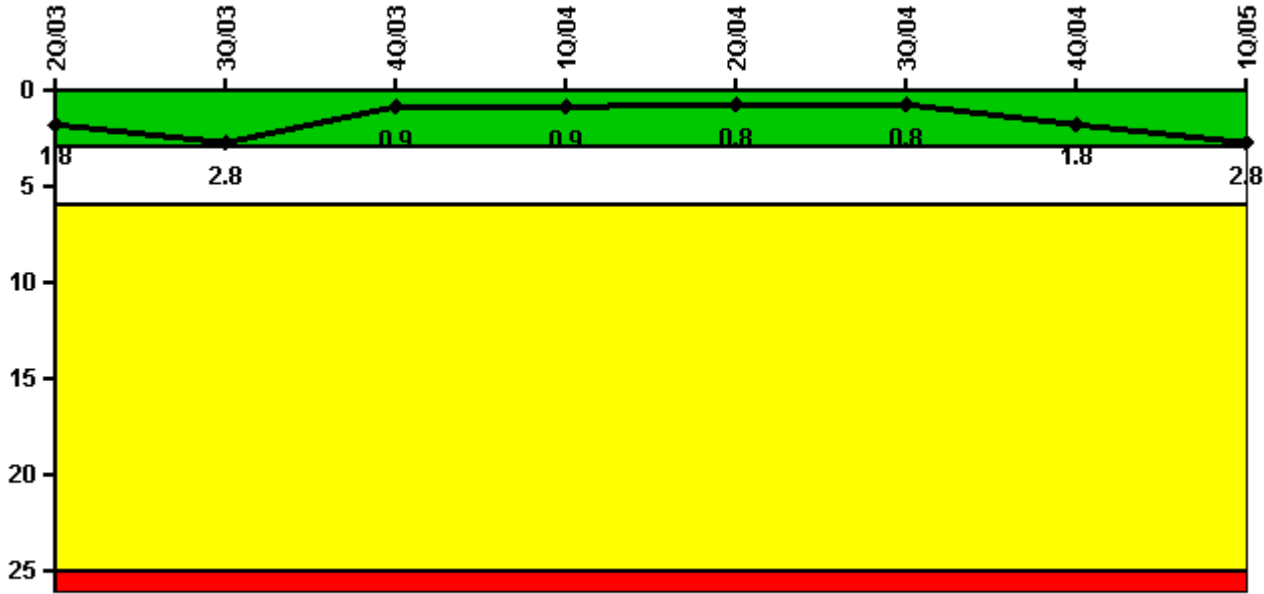


## Fermi 2

### 1Q/2005 Performance Indicators

Licensee's General Comments: none

#### Unplanned Scrams per 7000 Critical Hrs



**Thresholds: White > 3.0 Yellow > 6.0 Red > 25.0**

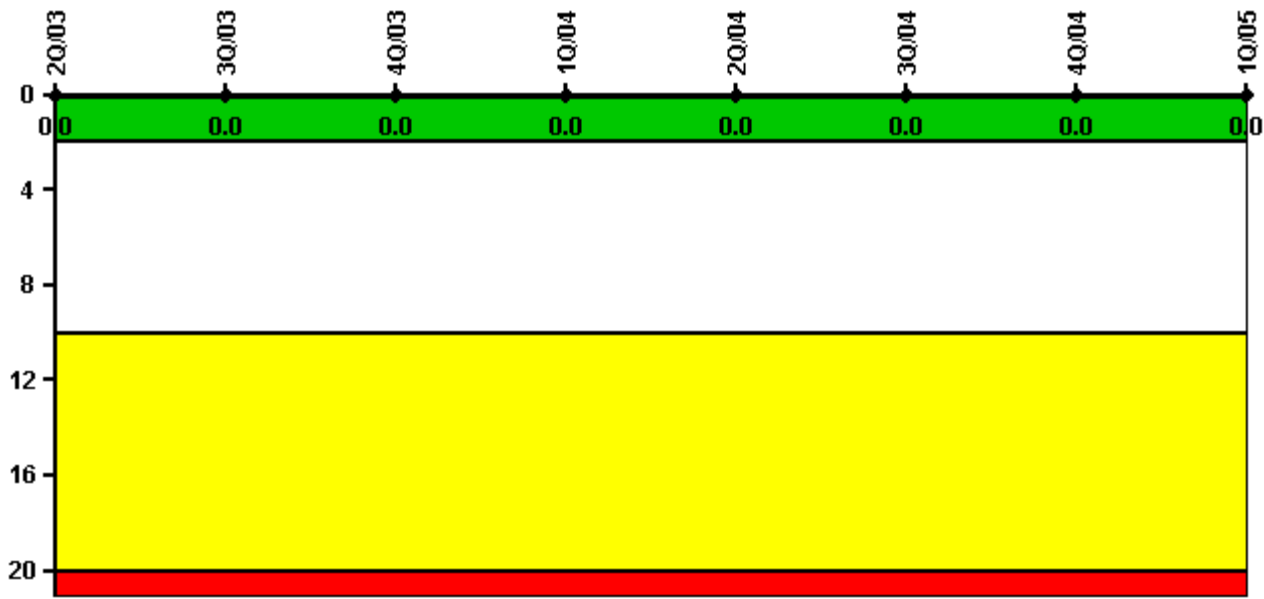
#### Notes

Unplanned Scrams per 7000 Critical Hrs	2Q/03	3Q/03	4Q/03	1Q/04	2Q/04	3Q/04	4Q/04	1Q/05
Unplanned scrams	0	1.0	0	0	0	1.0	1.0	1.0
Critical hours	1307.5	2010.5	2209.0	2184.0	2183.0	1979.5	1558.7	1884.3
Indicator value	1.8	2.8	0.9	0.9	0.8	0.8	1.8	2.8

Licensee Comments:

1Q/05: Plant Shutdown and Emergency Plan activation on 1/24/2005 caused by increased unidentified drywell leakage rate. Source was Emergency Closed Cooling Water (Drywell Cooling Unit #4) and the leak was isolated. Drywell Coolers were reworked, followed by normal plant startup on 2/6/2005.

### Scrams with Loss of Normal Heat Removal



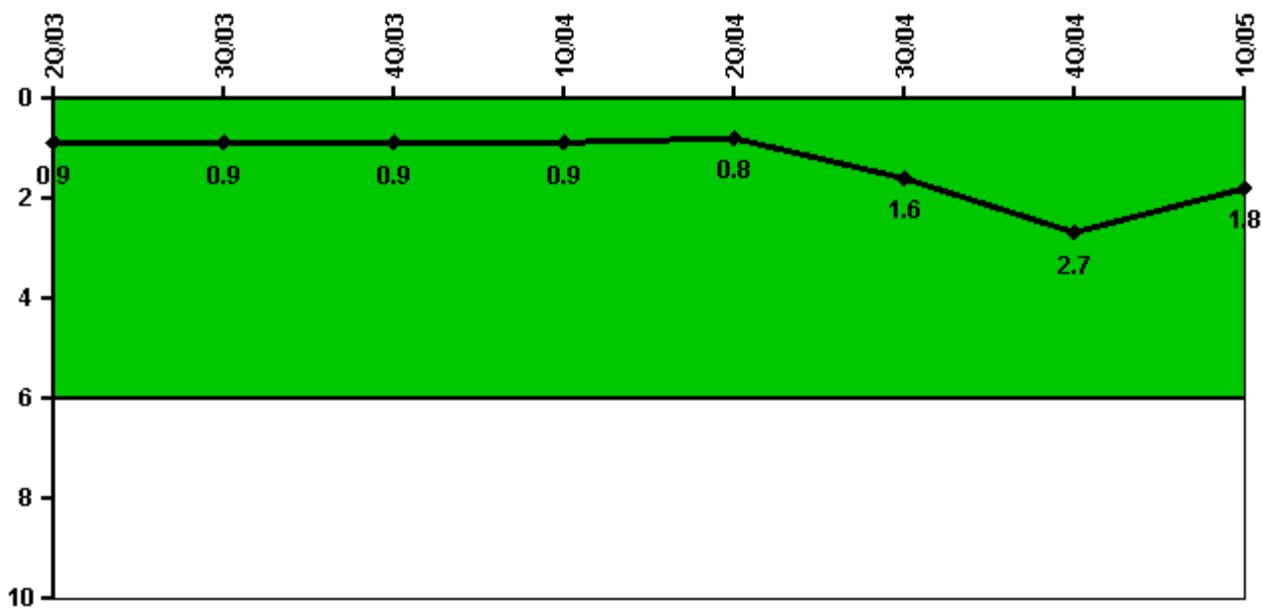
Thresholds: White > 2.0 Yellow > 10.0 Red > 20.0

#### Notes

Scrams with Loss of Normal Heat Removal	2Q/03	3Q/03	4Q/03	1Q/04	2Q/04	3Q/04	4Q/04	1Q/05
Scrams	0	0	0	0	0	0	0	0
Indicator value	0	0	0	0	0	0	0	0

Licensee Comments: none

### Unplanned Power Changes per 7000 Critical Hrs



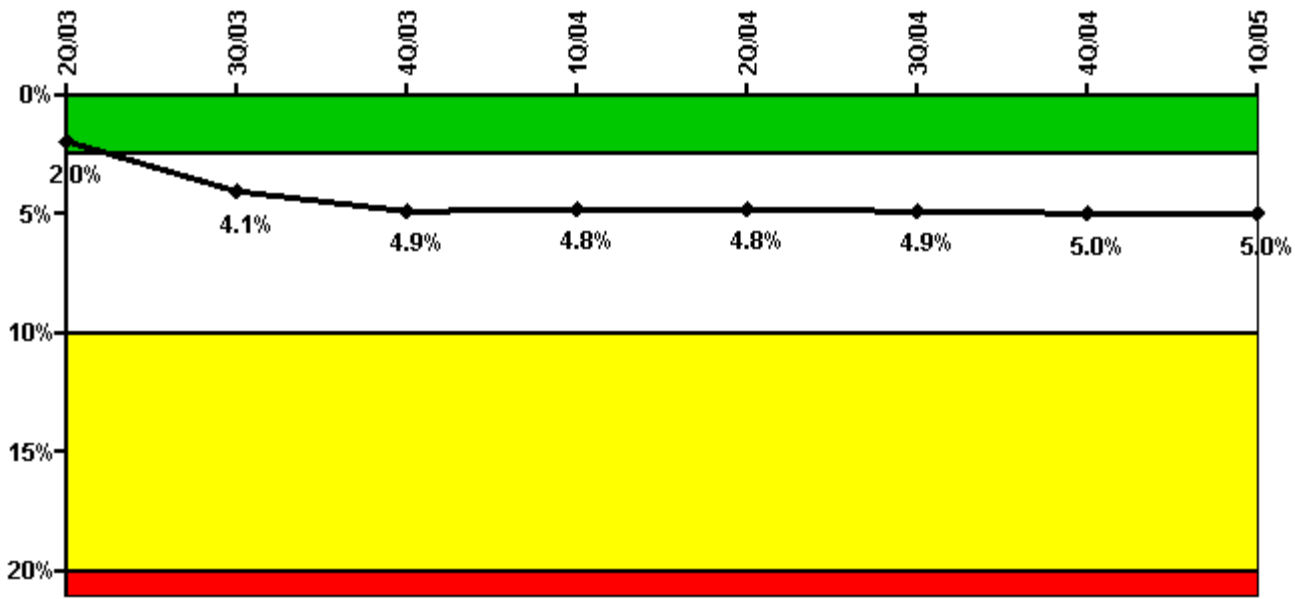
Thresholds: White > 6.0

#### Notes

Unplanned Power Changes per 7000 Critical Hrs	2Q/03	3Q/03	4Q/03	1Q/04	2Q/04	3Q/04	4Q/04	1Q/05
Unplanned power changes	0	0	0	1.0	0	1.0	1.0	0
Critical hours	1307.5	2010.5	2209.0	2184.0	2183.0	1979.5	1558.7	1884.3
<b>Indicator value</b>	<b>0.9</b>	<b>0.9</b>	<b>0.9</b>	<b>0.9</b>	<b>0.8</b>	<b>1.6</b>	<b>2.7</b>	<b>1.8</b>

Licensee Comments: none

### Safety System Unavailability, Emergency AC Power, >2EDG



Thresholds: White > 2.5% Yellow > 10.0% Red > 20.0%

#### Notes

Safety System Unavailability, Emergency AC Power, >2EDG	2Q/03	3Q/03	4Q/03	1Q/04	2Q/04	3Q/04	4Q/04	1Q/05
<b>Train 1</b>								
Planned unavailable hours	8.15	44.88	9.52	10.00	6.70	72.70	19.39	3.18
Unplanned unavailable hours	0	0	0	0	1.27	0	0	0
Fault exposure hours	0	0	0	0	0	0	0	0
Effective Reset hours	0	0	0	0	0	0	0	0
Required hours	2183.00	2208.00	2209.00	2184.00	2183.00	2208.00	2208.00	2160.00
<b>Train 2</b>								
Planned unavailable hours	2.13	0	11.47	71.86	4.76	61.90	10.91	3.05
Unplanned unavailable hours	0	0	0	0	0	86.65	0	0
Fault exposure hours	694.00	2208.00	928.93	0	0	0	0	0
Effective Reset hours	0	0	0	0	0	0	0	0
Required hours	2183.00	2208.00	2209.00	2184.00	2183.00	2208.00	2208.00	2160.00
<b>Train 3</b>								
Planned unavailable hours	3.55	6.09	24.64	8.03	4.84	60.78	27.72	5.37
Unplanned unavailable hours	2.03	0	0	0	0	7.12	0	0
Fault exposure hours	0	0	0	0	0	2.72	0	0
Effective Reset hours	0	0	0	0	0	0	0	0
Required hours	2183.00	2208.00	2209.00	2184.00	2183.00	2208.00	2208.00	2160.00
<b>Train 4</b>								
Planned unavailable hours	8.61	8.17	12.78	13.07	5.91	53.56	37.28	10.93
Unplanned unavailable hours	0	0	0	0	0	7.13	0	9.08
Fault exposure hours	0	0	0	0	0	2.72	0	0
Effective Reset hours	0	0	0	0	0	0	0	0
Required hours	2183.00	2208.00	2209.00	2184.00	2183.00	2208.00	2208.00	2160.00
<b>Indicator value</b>	<b>2.0%</b>	<b>4.1%</b>	<b>4.9%</b>	<b>4.8%</b>	<b>4.8%</b>	<b>4.9%</b>	<b>5.0%</b>	<b>5.0%</b>

Licensee Comments:

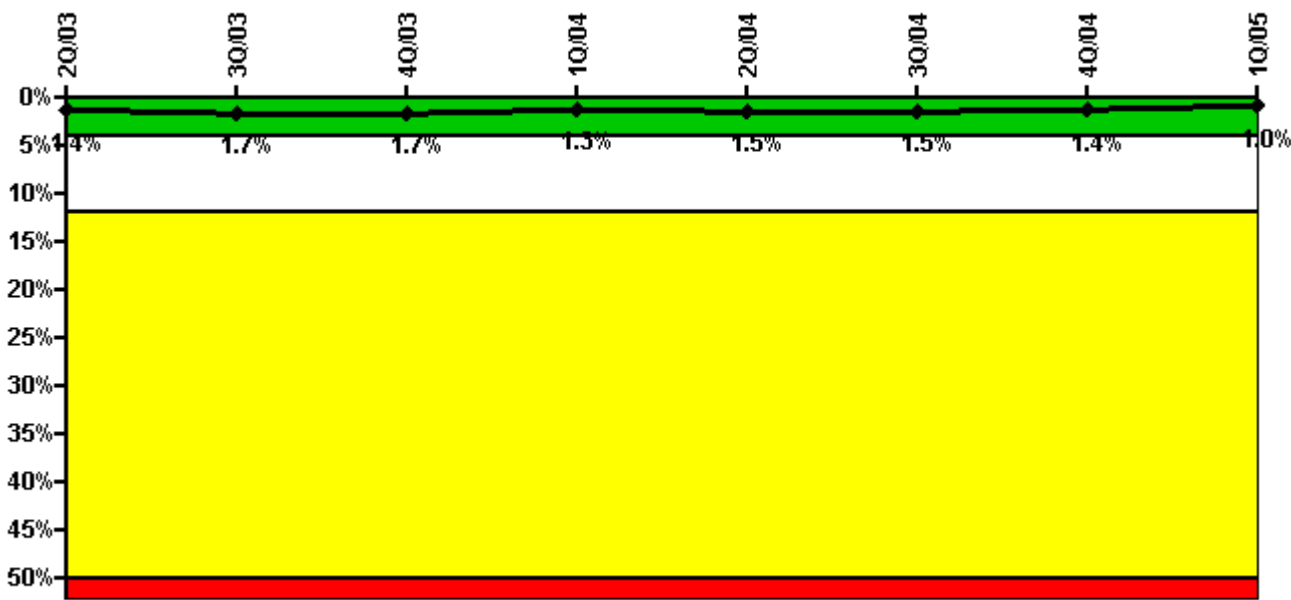
1Q/05: 1. Licensee actions for resetting for November 2003 EDG 12 lube oil fitting fault exposure hours are complete, NRC to close issue in next inspection report (scheduled for early May). Licensee will submit mid-quarter fault hour reset data after inspection report is issued. 2. Changes to previously submitted data (based on licensee review of support systems unavailability) included with 1Q 2005 submittal. There were no changes in indicator status as a result of the revised data.

3Q/04: 2004-08: For Emergency Diesel Generator #12's scavenging air blower failure, 385.3 T/2 fault exposure hours were assessed between the last successful surveillance test and the time of EDG shutdown after the blower failure on 8/6/04 @ 1311. 2004-09: For the failure of the Digital Load Sequencer reset pushbutton switch, fault exposure hours were assessed against Trains 3 and 4 from 9/17/04 @ 1121 to 9/17/04 @ 1404. Fault initiation time was identified from an alarm recorder report.

4Q/03: Train 2 {EDG 12} fault exposure hours incurred due to lube oil system pressure switch fitting found not fully made up, impacting seismic qualification. Change report submitted for June through September 2003 data.

3Q/03: EDG 12{Train 2} 237.5 hours of T/2 fault exposure hours due to failed signal generator.

### Safety System Unavailability, High Pressure Injection System (HPCI)



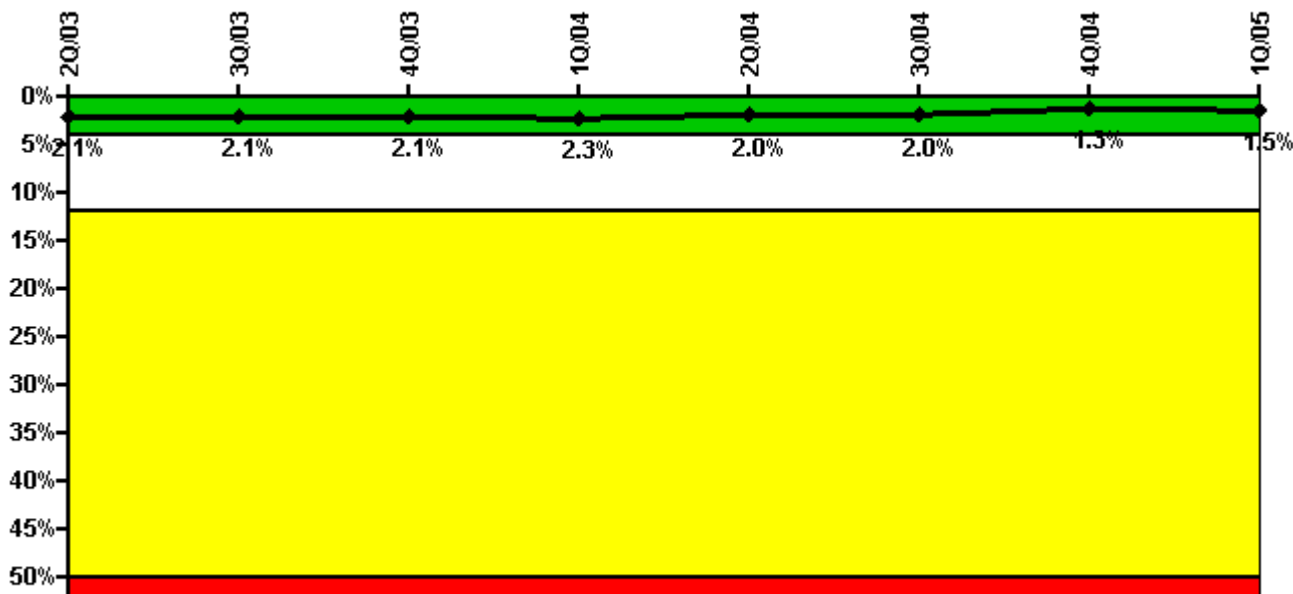
Thresholds: White > 4.0% Yellow > 12.0% Red > 50.0%

Notes

Safety System Unavailability, High Pressure Injection System (HPCI)	2Q/03	3Q/03	4Q/03	1Q/04	2Q/04	3Q/04	4Q/04	1Q/05
<b>Train 1</b>								
Planned unavailable hours	0	66.32	3.18	1.37	73.04	1.92	14.84	0.90
Unplanned unavailable hours	0	3.30	0	0	20.77	0	0	0
Fault exposure hours	0	0	0	0	0	0	0	0
Effective Reset hours	0	0	0	0	0	0	0	0
Required hours	1307.50	2010.50	2209.00	2184.00	2183.00	1979.47	1558.65	1978.99
<b>Indicator value</b>	<b>1.4%</b>	<b>1.7%</b>	<b>1.7%</b>	<b>1.3%</b>	<b>1.5%</b>	<b>1.5%</b>	<b>1.4%</b>	<b>1.0%</b>

Licensee Comments: none

### Safety System Unavailability, Heat Removal System (RCIC)



Thresholds: White > 4.0% Yellow > 12.0% Red > 50.0%

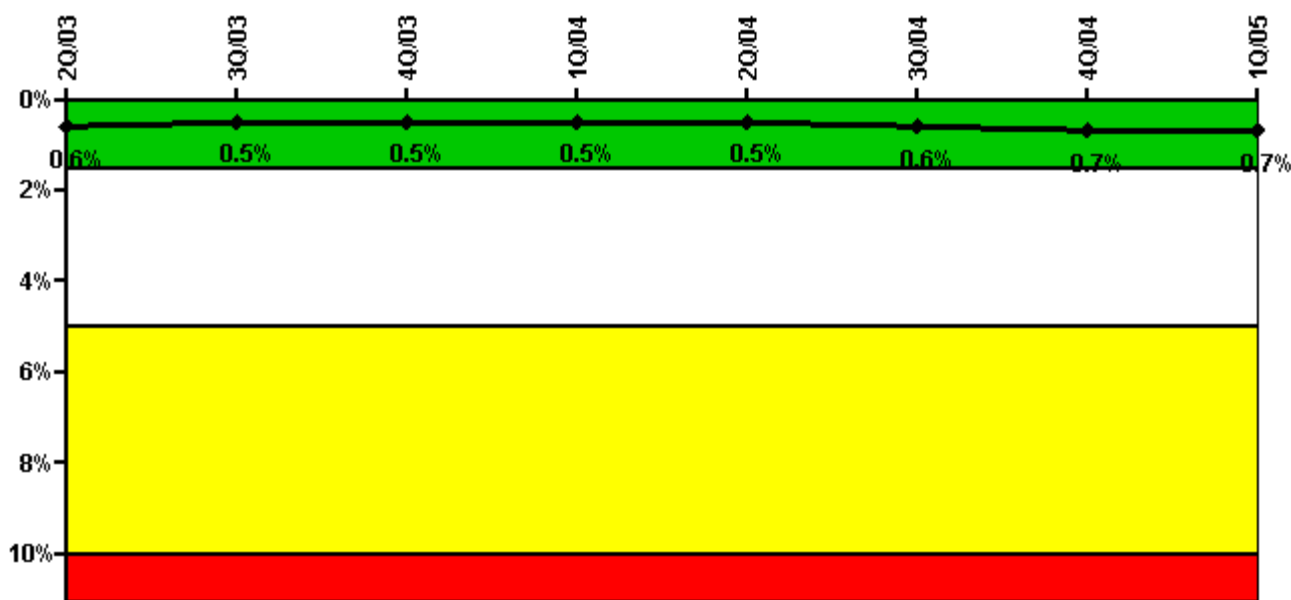
### Notes

Safety System Unavailability, Heat Removal System (RCIC)	2Q/03	3Q/03	4Q/03	1Q/04	2Q/04	3Q/04	4Q/04	1Q/05
<b>Train 1</b>								
Planned unavailable hours	57.48	7.98	2.52	55.16	1.48	0.71	3.02	83.77
Unplanned unavailable hours	0	0	2.92	0	0	0	0	7.19
Fault exposure hours	0	0	0	0	0	0	0	0
Effective Reset hours	0	0	0	0	0	0	0	0
Required hours	1307.50	2010.50	2209.00	2184.00	2183.00	1979.47	1558.65	1978.99
<b>Indicator value</b>	<b>2.1%</b>	<b>2.1%</b>	<b>2.1%</b>	<b>2.3%</b>	<b>2.0%</b>	<b>2.0%</b>	<b>1.3%</b>	<b>1.5%</b>

Licensee Comments:

1Q/05: Changes to previously submitted data (based on licensee review of support systems unavailability) included with 1Q 2005 submittal. There were no changes in indicator status as a result of the revised data.

### Safety System Unavailability, Residual Heat Removal System



**Thresholds: White > 1.5% Yellow > 5.0% Red > 10.0%**

**Notes**

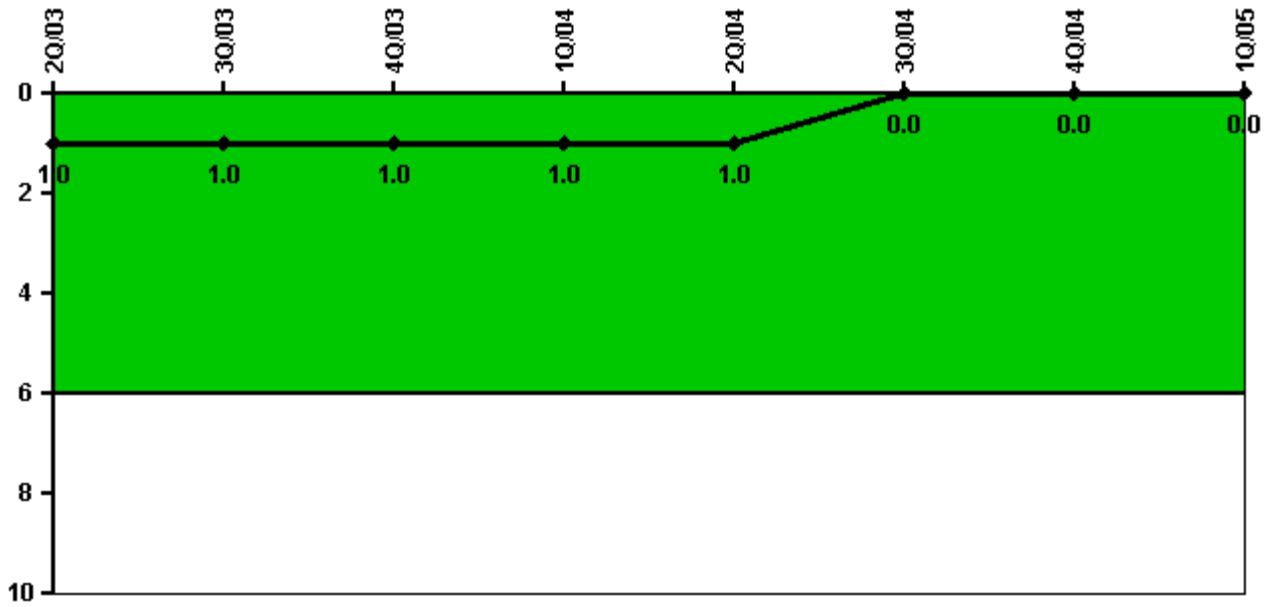
Safety System Unavailability, Residual Heat Removal System	2Q/03	3Q/03	4Q/03	1Q/04	2Q/04	3Q/04	4Q/04	1Q/05
<b>Train 1</b>								
Planned unavailable hours	5.25	39.73	0.62	1.42	0.72	79.35	15.67	0.49
Unplanned unavailable hours	0.65	0	0.15	0	0	1.50	0	0
Fault exposure hours	0	0	0	0	0	0	0	0
Effective Reset hours	0	0	0	0	0	0	0	0
Required hours	2183.00	2208.00	2209.00	2184.00	2183.00	2208.00	2209.00	2160.00
<b>Train 2</b>								
Planned unavailable hours	0	8.85	18.92	1.10	13.05	23.71	9.60	0
Unplanned unavailable hours	0	0	0	0	0	0	0	13.42
Fault exposure hours	0	0	0	0	0	0	0	0
Effective Reset hours	0	0	0	0	0	0	0	0
Required hours	2183.00	2208.00	2209.00	2184.00	2183.00	2208.00	2209.00	2160.00
<b>Indicator value</b>	<b>0.6%</b>	<b>0.5%</b>	<b>0.5%</b>	<b>0.5%</b>	<b>0.5%</b>	<b>0.6%</b>	<b>0.7%</b>	<b>0.7%</b>

Licensee Comments:

1Q/05: Changes to previously submitted data (based on licensee review of support systems unavailability) included with 1Q 2005 submittal. There were no changes in indicator status as a result of the revised data.

2Q/03: April 2003 Train 1 RHR Data amended in Q1 2004 submittal as the result of data review. 39 minutes of unplanned unavailability added, no impact on Indicator status {remained Green}

### Safety System Functional Failures (BWR)



Thresholds: White > 6.0

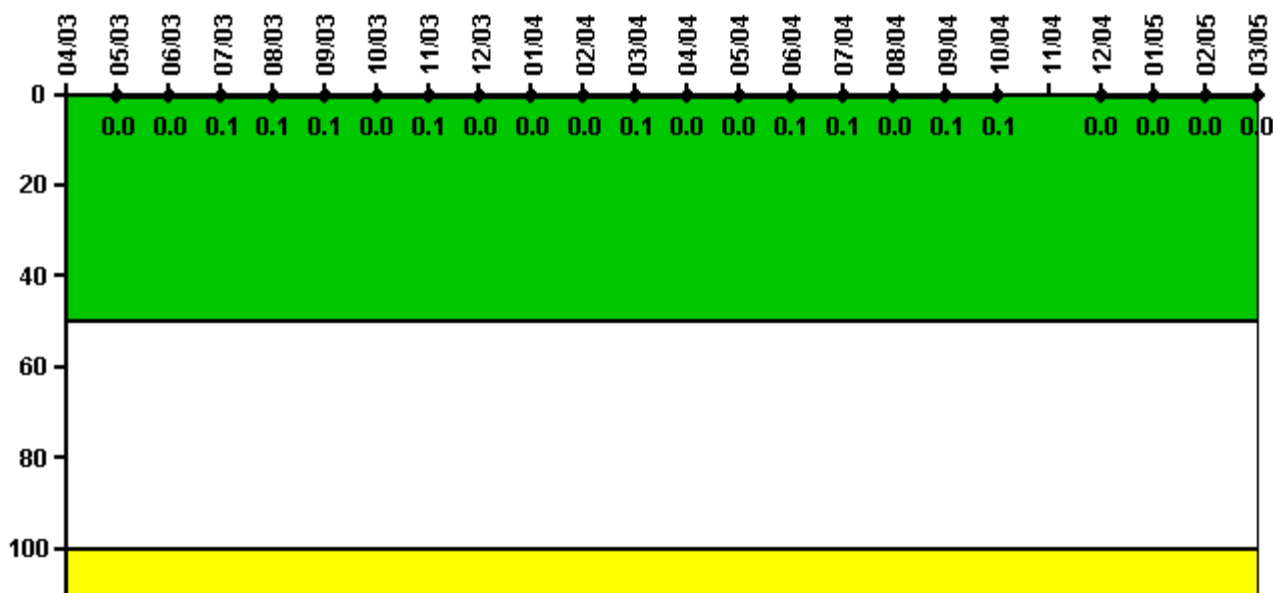
#### Notes

Safety System Functional Failures (BWR)	2Q/03	3Q/03	4Q/03	1Q/04	2Q/04	3Q/04	4Q/04	1Q/05
Safety System Functional Failures	0	1	0	0	0	0	0	0
Indicator value	1	1	1	1	1	0	0	0

Licensee Comments: none



### Reactor Coolant System Activity



Thresholds: White > 50.0 Yellow > 100.0

#### Notes

Reactor Coolant System Activity	4/03	5/03	6/03	7/03	8/03	9/03	10/03	11/03	12/03	1/04	2/04	3/04
Maximum activity	N/A	0.000080	0.000084	0.000123	0.000124	0.000135	0.000092	0.000129	0.000094	0.000089	0.000094	0.000114
Technical specification limit	0.2	0.2	0.2	0.2	0.2	0.2	0.2	0.2	0.2	0.2	0.2	0.2
Indicator value	N/A	0	0	0.1	0.1	0.1	0	0.1	0	0	0	0.1

Reactor Coolant System Activity	4/04	5/04	6/04	7/04	8/04	9/04	10/04	11/04	12/04	1/05	2/05	3/05
Maximum activity	0.000080	0.000076	0.000125	0.000107	0.000071	0.000120	0.000124	N/A	0.000058	0.000099	0.000062	0.000068
Technical specification limit	0.2	0.2	0.2	0.2	0.2	0.2	0.2	0.2	0.2	0.2	0.2	0.2
Indicator value	0	0	0.1	0.1	0	0.1	0.1	N/A	0	0	0	0

Licensee Comments: none

### Reactor Coolant System Leakage



Thresholds: White > 50.0 Yellow > 100.0

#### Notes

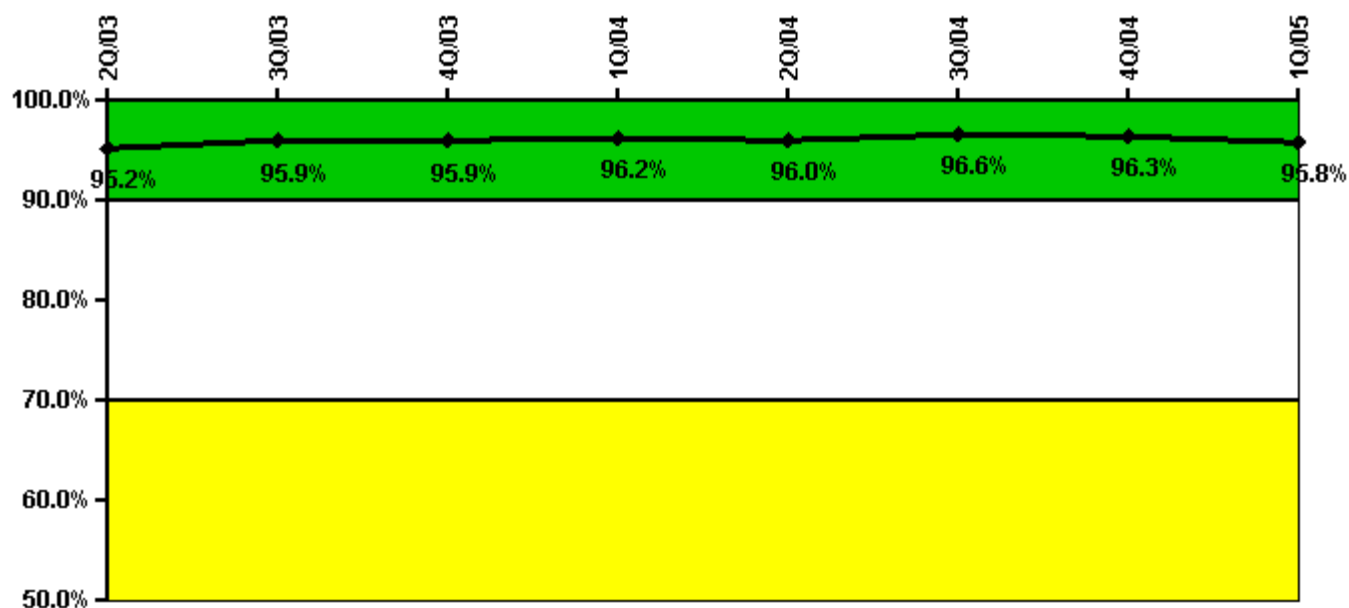
Reactor Coolant System Leakage	4/03	5/03	6/03	7/03	8/03	9/03	10/03	11/03	12/03	1/04	2/04	3/04
Maximum leakage	N/A	1.830	1.750	1.640	1.770	1.650	1.620	1.620	1.610	1.610	1.600	1.610
Technical specification limit	25.0	25.0	25.0	25.0	25.0	25.0	25.0	25.0	25.0	25.0	25.0	25.0
Indicator value	N/A	7.3	7.0	6.6	7.1	6.6	6.5	6.5	6.4	6.4	6.4	6.4

Reactor Coolant System Leakage	4/04	5/04	6/04	7/04	8/04	9/04	10/04	11/04	12/04	1/05	2/05	3/05
Maximum leakage	1.600	1.610	1.610	1.620	1.610	1.620	1.620	1.610	1.640	2.940	1.640	1.620
Technical specification limit	25.0	25.0	25.0	25.0	25.0	25.0	25.0	25.0	25.0	25.0	25.0	25.0
Indicator value	6.4	6.4	6.4	6.5	6.4	6.5	6.5	6.4	6.6	11.8	6.6	6.5

Licensee Comments: none

### Drill/Exercise Performance



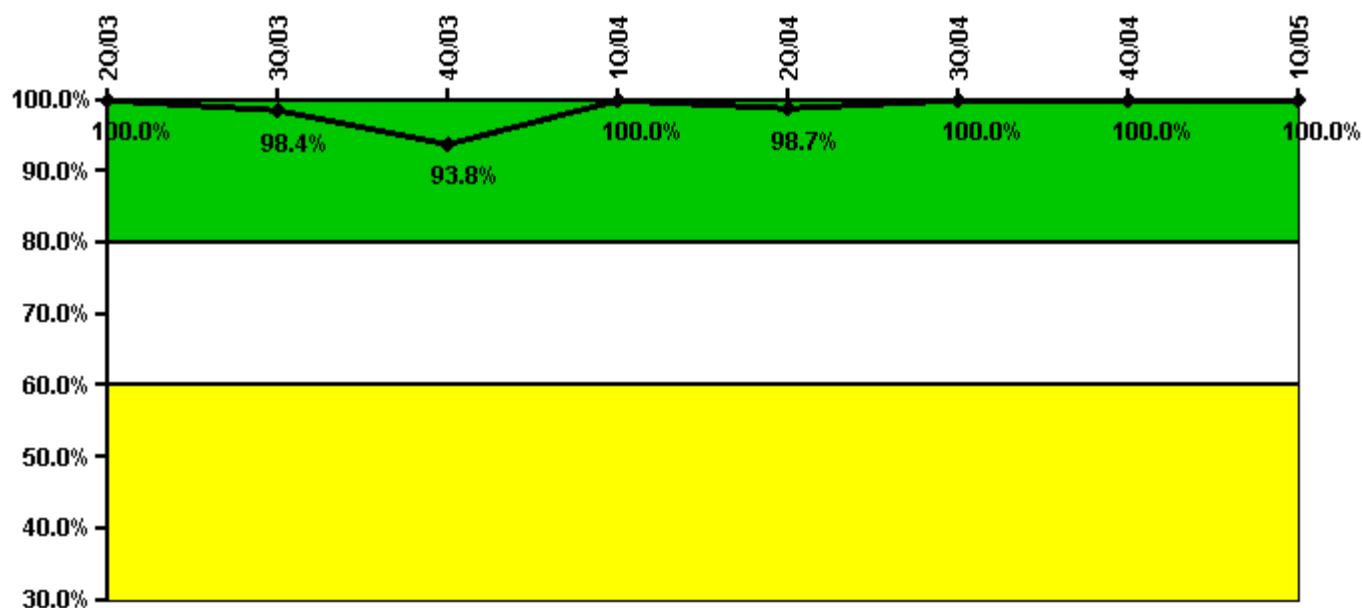
Thresholds: White < 90.0% Yellow < 70.0%

#### Notes

Drill/Exercise Performance	2Q/03	3Q/03	4Q/03	1Q/04	2Q/04	3Q/04	4Q/04	1Q/05
Successful opportunities	28.0	149.0	0	54.0	52.0	15.0	7.0	34.0
Total opportunities	28.0	156.0	0	57.0	53.0	16.0	8.0	36.0
Indicator value	95.2%	95.9%	95.9%	96.2%	96.0%	96.6%	96.3%	95.8%

Licensee Comments: none

### ERO Drill Participation



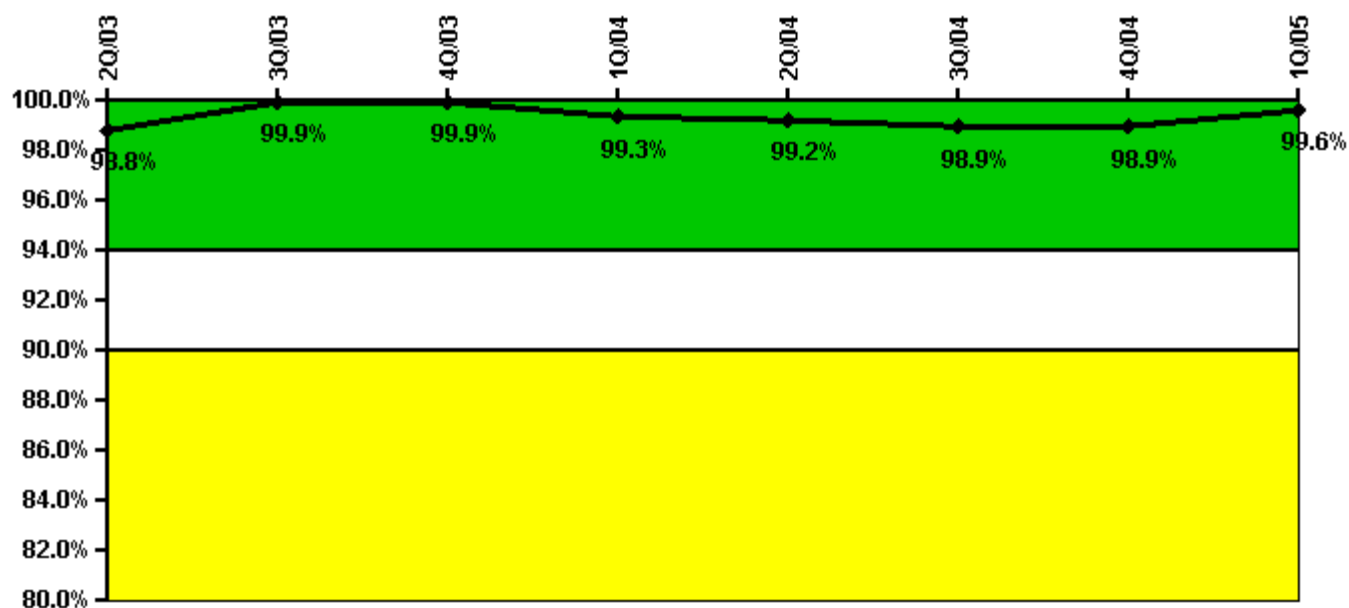
Thresholds: White < 80.0% Yellow < 60.0%

#### Notes

ERO Drill Participation	2Q/03	3Q/03	4Q/03	1Q/04	2Q/04	3Q/04	4Q/04	1Q/05
Participating Key personnel	60.0	63.0	61.0	78.0	76.0	82.0	91.0	103.0
Total Key personnel	60.0	64.0	65.0	78.0	77.0	82.0	91.0	103.0
Indicator value	100.0%	98.4%	93.8%	100.0%	98.7%	100.0%	100.0%	100.0%

Licensee Comments: none

### Alert & Notification System



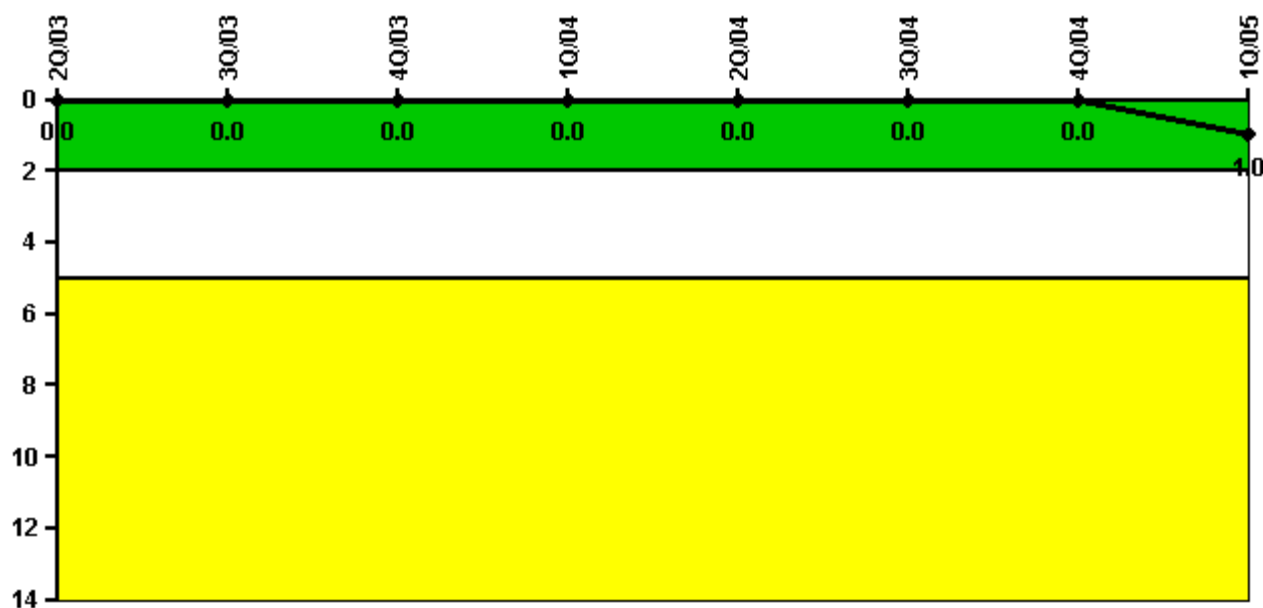
Thresholds: White < 94.0% Yellow < 90.0%

#### Notes

Alert & Notification System	2Q/03	3Q/03	4Q/03	1Q/04	2Q/04	3Q/04	4Q/04	1Q/05
Successful siren-tests	186	186	186	181	185	184	186	186
Total sirens-tests	186	186	186	186	186	186	186	186
Indicator value	98.8%	99.9%	99.9%	99.3%	99.2%	98.9%	98.9%	99.6%

Licensee Comments: none

### Occupational Exposure Control Effectiveness



Thresholds: White > 2.0 Yellow > 5.0

#### Notes

Occupational Exposure Control Effectiveness	2Q/03	3Q/03	4Q/03	1Q/04	2Q/04	3Q/04	4Q/04	1Q/05
High radiation area occurrences	0	0	0	0	0	0	0	1
Very high radiation area occurrences	0	0	0	0	0	0	0	0
Unintended exposure occurrences	0	0	0	0	0	0	0	0
<b>Indicator value</b>	<b>0</b>	<b>0</b>	<b>0</b>	<b>0</b>	<b>0</b>	<b>0</b>	<b>0</b>	<b>1</b>

Licensee Comments:

1Q/05: Potential High Radiation Area occurrence in 03/2005 - NRC determination review still in progress.

### RETS/ODCM Radiological Effluent



Thresholds: White > 1.0 Yellow > 3.0

#### Notes

RETS/ODCM Radiological Effluent	2Q/03	3Q/03	4Q/03	1Q/04	2Q/04	3Q/04	4Q/04	1Q/05
RETS/ODCM occurrences	0	0	0	0	0	0	0	0
Indicator value	0	0	0	0	0	0	0	0

Licensee Comments: none

[Physical Protection](#) information not publicly available.

▲ [Action Matrix Summary](#) | [Inspection Findings Summary](#) | [PI Summary](#) | [Reactor Oversight Process](#)

Last Modified: June 17, 2005