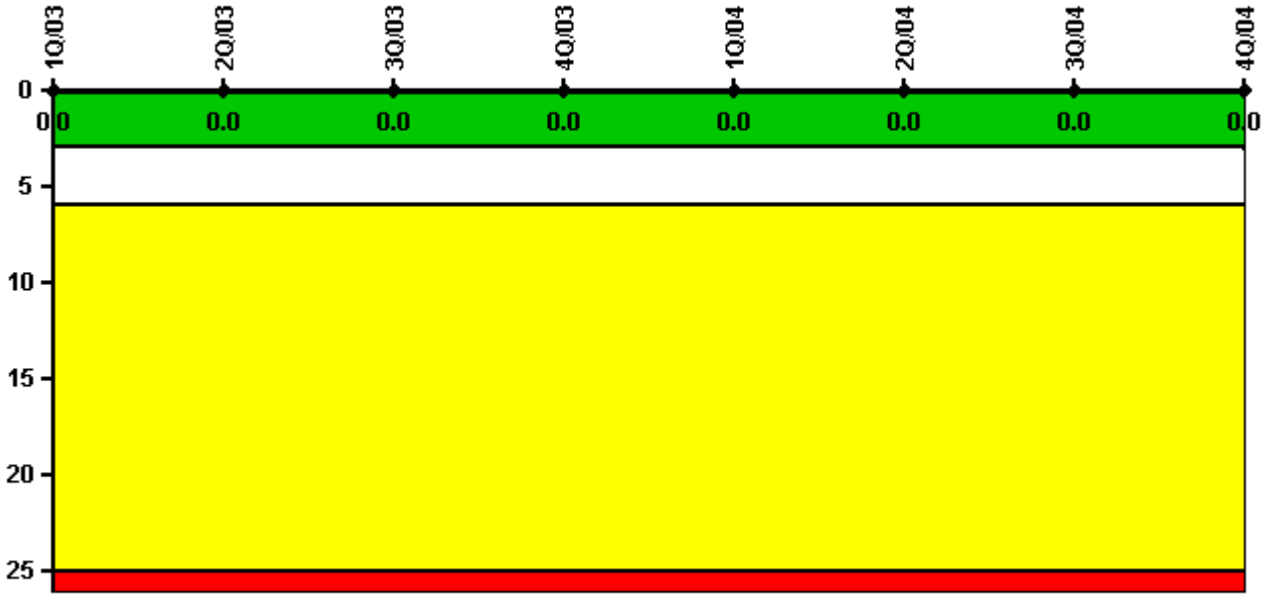


Waterford 3

4Q/2004 Performance Indicators

Licensee's General Comments: none

Unplanned Scrams per 7000 Critical Hrs



Thresholds: White > 3.0 Yellow > 6.0 Red > 25.0

Notes

Unplanned Scrams per 7000 Critical Hrs	1Q/03	2Q/03	3Q/03	4Q/03	1Q/04	2Q/04	3Q/04	4Q/04
Unplanned scrams	0	0	0	0	0	0	0	0
Critical hours	2115.1	2183.0	2208.0	1457.1	2184.0	2183.0	2208.0	2209.0
Indicator value	0	0	0	0	0	0	0	0

Licensee Comments: none

Scrams with Loss of Normal Heat Removal



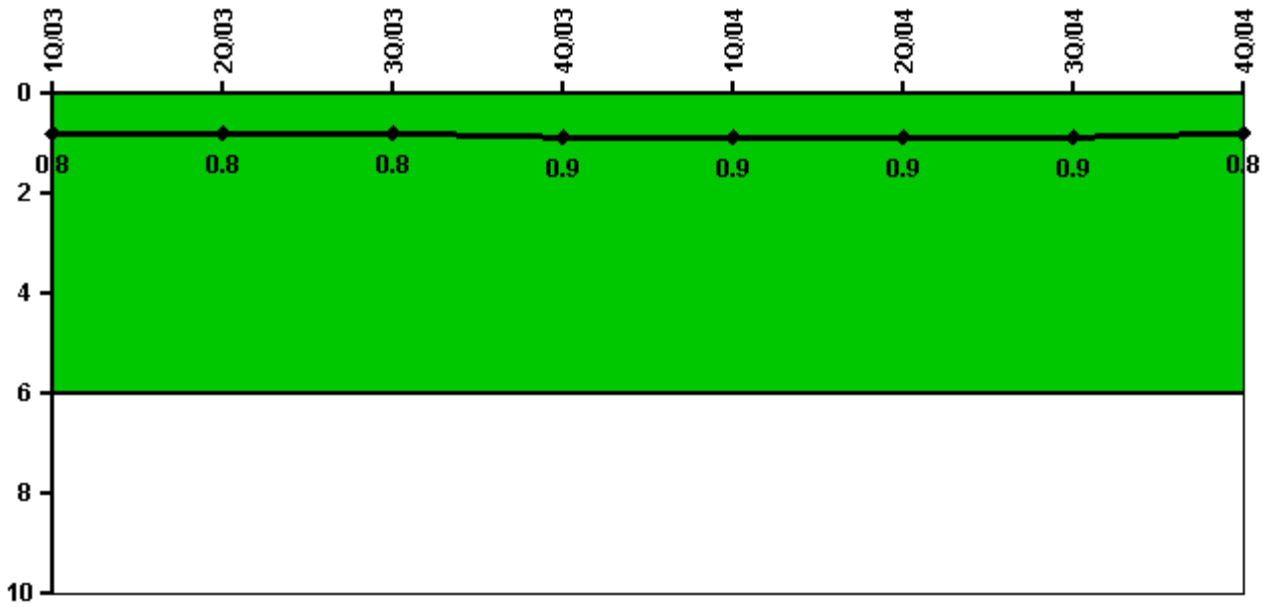
Thresholds: White > 2.0 Yellow > 10.0 Red > 20.0

Notes

Scrams with Loss of Normal Heat Removal	1Q/03	2Q/03	3Q/03	4Q/03	1Q/04	2Q/04	3Q/04	4Q/04
Scrams	0	0	0	0	0	0	0	0
Indicator value	0	0	0	0	0	0	0	0

Licensee Comments: none

Unplanned Power Changes per 7000 Critical Hrs



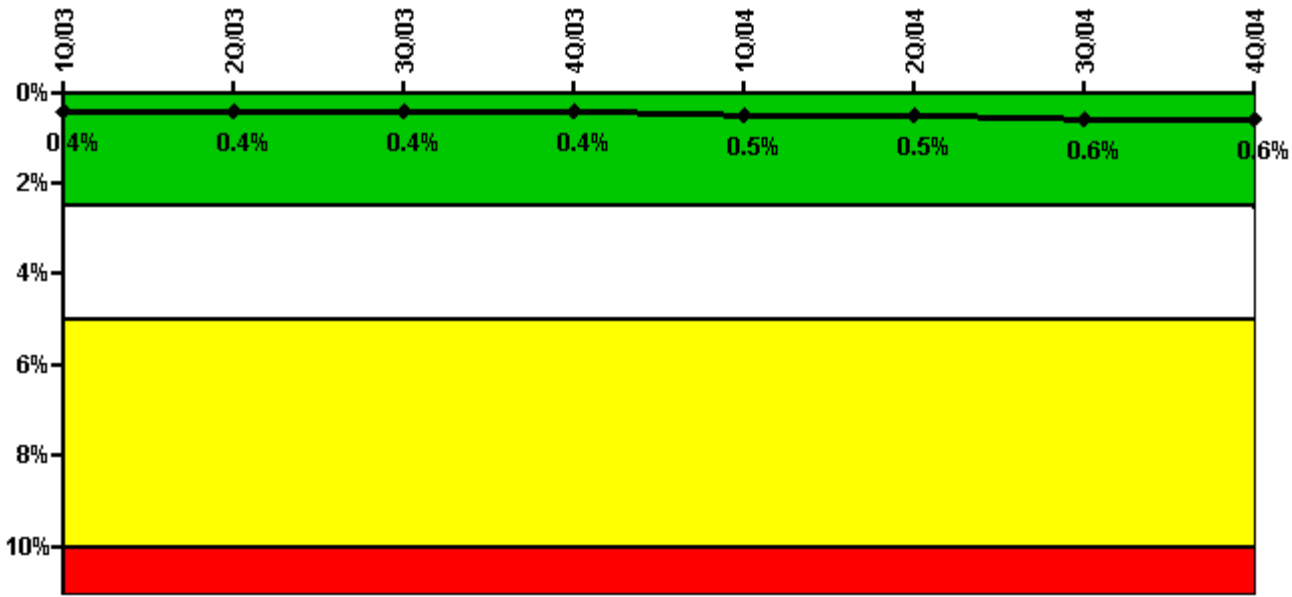
Thresholds: White > 6.0

Notes

Unplanned Power Changes per 7000 Critical Hrs	1Q/03	2Q/03	3Q/03	4Q/03	1Q/04	2Q/04	3Q/04	4Q/04
Unplanned power changes	1.0	0	0	0	1.0	0	0	0
Critical hours	2115.1	2183.0	2208.0	1457.1	2184.0	2183.0	2208.0	2209.0
Indicator value	0.8	0.8	0.8	0.9	0.9	0.9	0.9	0.8

Licensee Comments: none

Safety System Unavailability, Emergency AC Power



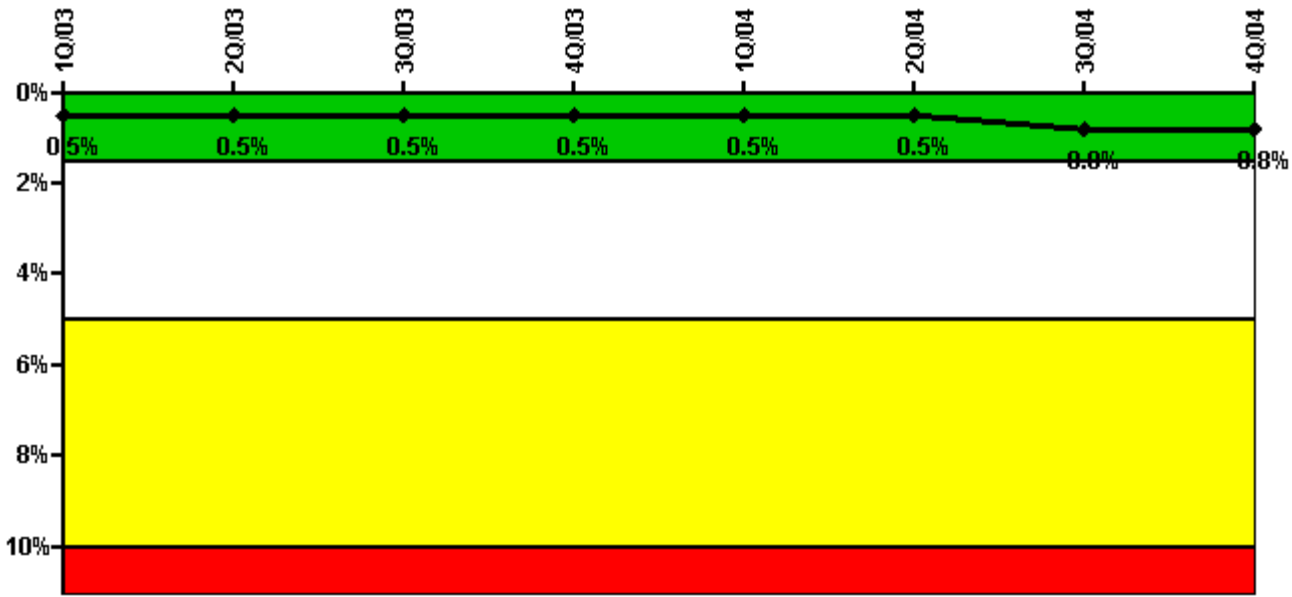
Thresholds: White > 2.5% Yellow > 5.0% Red > 10.0%

Notes

Safety System Unavailability, Emergency AC Power	1Q/03	2Q/03	3Q/03	4Q/03	1Q/04	2Q/04	3Q/04	4Q/04
Train 1								
Planned unavailable hours	0	0	4.67	7.62	0	1.18	3.40	4.00
Unplanned unavailable hours	0	21.88	16.97	0	0	0	32.40	1.27
Fault exposure hours	0	0	0	0	0	0	0	0
Effective Reset hours	0	0	0	0	0	0	0	0
Required hours	2160.00	2183.00	2208.00	2076.50	2184.00	2183.00	2208.00	2209.00
Train 2								
Planned unavailable hours	25.08	0	0	0	6.86	0	10.08	16.59
Unplanned unavailable hours	0	0	0	0	22.82	0.05	28.68	17.65
Fault exposure hours	0	0	0	0	0	0	0	0
Effective Reset hours	0	0	0	0	0	0	0	0
Required hours	2160.00	2183.00	2208.00	2076.50	2184.00	2183.00	2208.00	2209.00
Indicator value	0.4%	0.4%	0.4%	0.4%	0.5%	0.5%	0.6%	0.6%

Licensee Comments: none

Safety System Unavailability, High Pressure Injection System (HPSI)



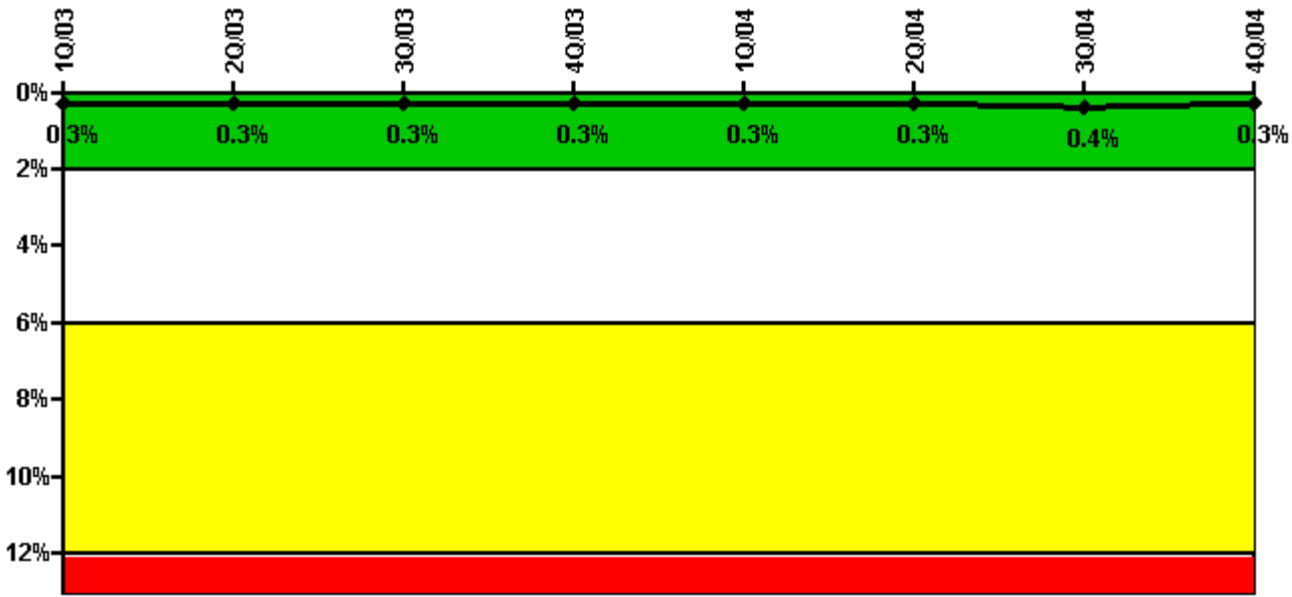
Thresholds: White > 1.5% Yellow > 5.0% Red > 10.0%

Notes

Safety System Unavailability, High Pressure Injection System (HPSI)	1Q/03	2Q/03	3Q/03	4Q/03	1Q/04	2Q/04	3Q/04	4Q/04
Train 1								
Planned unavailable hours	0	21.42	8.38	7.62	0	2.48	51.60	0
Unplanned unavailable hours	0	21.88	0	0	0	0	15.82	1.27
Fault exposure hours	0	0	0	0	0	0	0	0
Effective Reset hours	0	0	0	0	0	0	0	0
Required hours	2160.00	2183.00	2208.00	1524.20	2184.00	2183.00	2208.00	2209.00
Train 2								
Planned unavailable hours	45.46	0	1.83	0	6.86	19.07	42.97	22.80
Unplanned unavailable hours	0	0	4.65	0	0	0.05	38.35	0
Fault exposure hours	0	0	0	0	0	0	0	0
Effective Reset hours	0	0	0	0	0	0	0	0
Required hours	2160.00	2183.00	2208.00	1524.20	2184.00	2183.00	2208.00	2209.00
Indicator value	0.5%	0.5%	0.5%	0.5%	0.5%	0.5%	0.8%	0.8%

Licensee Comments: none

Safety System Unavailability, Heat Removal System (AFW)



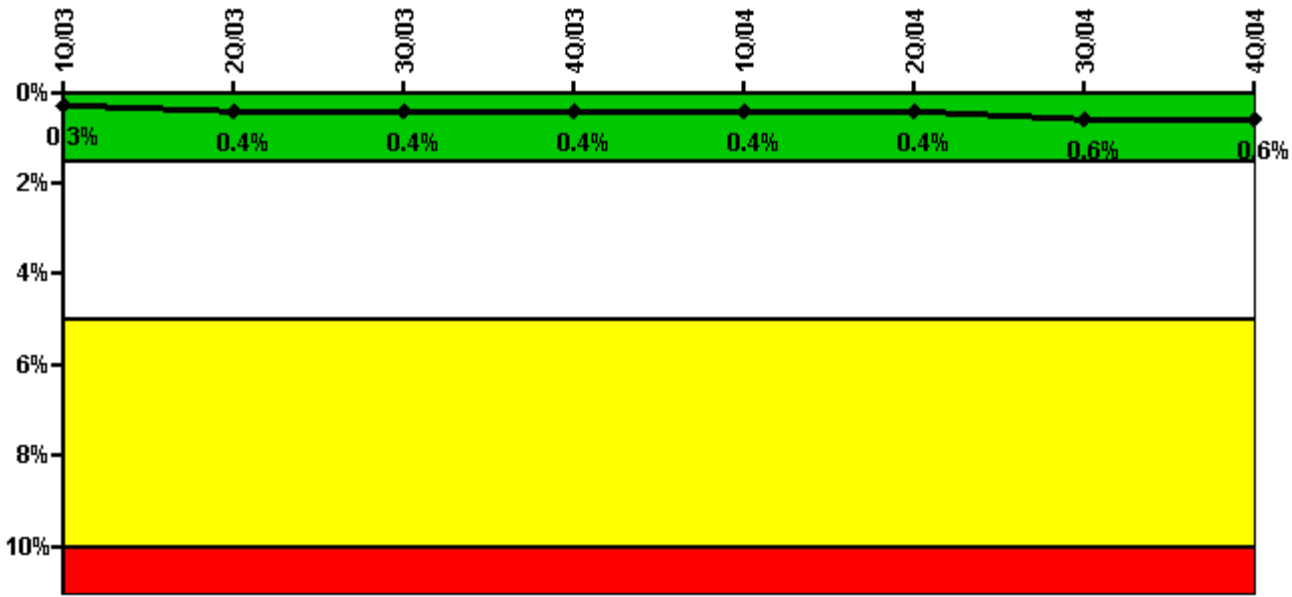
Thresholds: White > 2.0% Yellow > 6.0% Red > 12.0%

Notes

Safety System Unavailability, Heat Removal System (AFW)	1Q/03	2Q/03	3Q/03	4Q/03	1Q/04	2Q/04	3Q/04	4Q/04
Train 1								
Planned unavailable hours	11.77	0	0	7.62	12.60	0	16.35	0
Unplanned unavailable hours	0	21.88	0	0	0	0	15.82	1.27
Fault exposure hours	0	0	0	0	0	0	0	0
Effective Reset hours	0	0	0	0	0	0	0	0
Required hours	2160.00	2183.00	2208.00	1499.50	2184.00	2183.00	2208.00	2209.00
Train 2								
Planned unavailable hours	30.40	0	12.82	0	21.58	0	4.50	9.57
Unplanned unavailable hours	0	0	0	0	0	0.05	0	0
Fault exposure hours	0	0	0	0	0	0	0	0
Effective Reset hours	0	0	0	0	0	0	0	0
Required hours	2160.00	2183.00	2208.00	1499.50	2184.00	2183.00	2208.00	2209.00
Train 3								
Planned unavailable hours	0	0	3.15	0	0	20.53	0	0
Unplanned unavailable hours	0	0	0	0	0	0	0	0
Fault exposure hours	0	0	0	0	0	0	0	0
Effective Reset hours	0	0	0	0	0	0	0	0
Required hours	2160.00	2183.00	2208.00	1499.50	2184.00	2183.00	2208.00	2209.00
Indicator value	0.3%	0.3%	0.3%	0.3%	0.3%	0.3%	0.4%	0.3%

Licensee Comments: none

Safety System Unavailability, Residual Heat Removal System



Thresholds: White > 1.5% Yellow > 5.0% Red > 10.0%

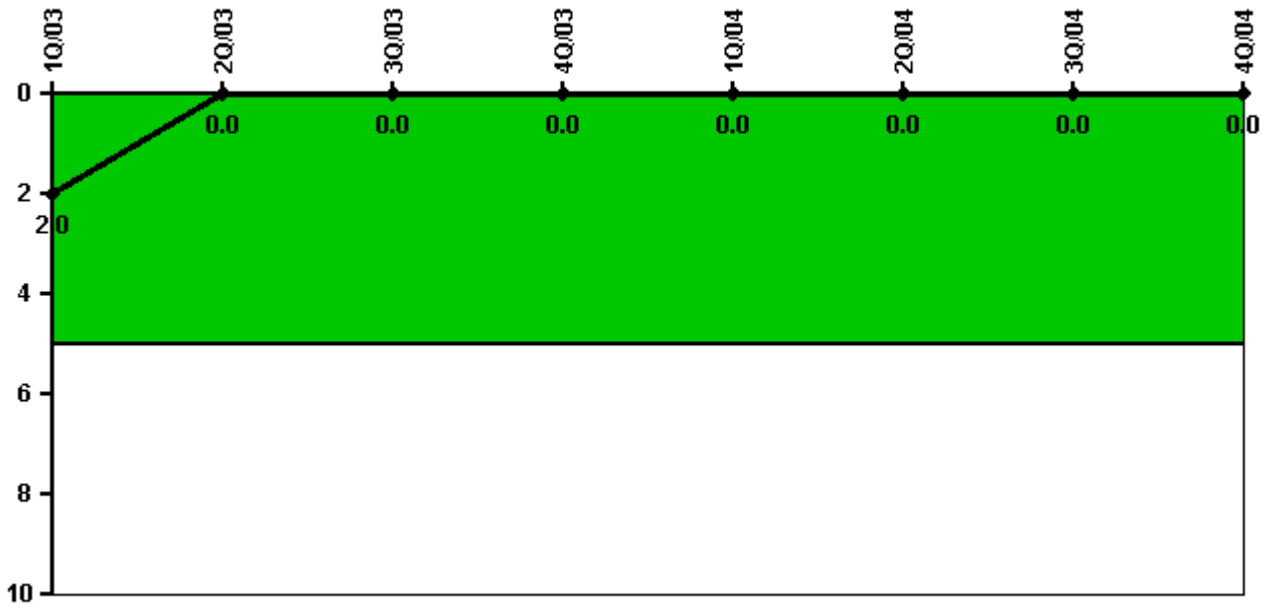
Notes

Safety System Unavailability, Residual Heat Removal System	1Q/03	2Q/03	3Q/03	4Q/03	1Q/04	2Q/04	3Q/04	4Q/04
Train 1								
Planned unavailable hours	0	21.42	0	7.62	26.33	0	48.46	0
Unplanned unavailable hours	0	21.88	0	0	0	0	15.82	1.27
Fault exposure hours	0	0	0	0	0	0	0	0
Effective Reset hours	0	0	0	0	0	0	0	0
Required hours	2160.00	2183.00	2208.00	1499.50	2184.00	2183.00	2208.00	2209.00
Train 2								
Planned unavailable hours	46.38	21.65	0	7.48	6.86	26.84	56.55	37.14
Unplanned unavailable hours	0	0	0	0	0	0.05	37.88	0
Fault exposure hours	0	0	0	0	0	0	0	0
Effective Reset hours	0	0	0	0	0	0	0	0
Required hours	2160.00	2183.00	2208.00	1499.50	2184.00	2183.00	2208.00	2209.00
Train 3								
Planned unavailable hours	0	0	0	0	0	0	0	0
Unplanned unavailable hours	0	0	0	0	0	0	0	0
Fault exposure hours	0	0	0	0	0	0	0	0
Effective Reset hours	0	0	0	0	0	0	0	0
Required hours	0	0	0	577.00	0	0	0	0
Train 4								
Planned unavailable hours	0	0	0	0	0	0	0	0
Unplanned unavailable hours	0	0	0	0	0	0	0	0
Fault exposure hours	0	0	0	0	0	0	0	0
Effective Reset hours	0	0	0	0	0	0	0	0
Required hours	0	0	0	577.00	0	0	0	0
Indicator value	0.3%	0.4%	0.4%	0.4%	0.4%	0.4%	0.6%	0.6%

Licensee Comments:

3Q/04: A change report was submitted with the 4th Quarter 2004 data package that revised RHR train number 2 unavailability for August 2004 from 60.77 hours to 52.05 hours due to re-evaluation of equipment status during a planned outage. The revision of this data does not change the previously determined performance indicator color.

Safety System Functional Failures (PWR)



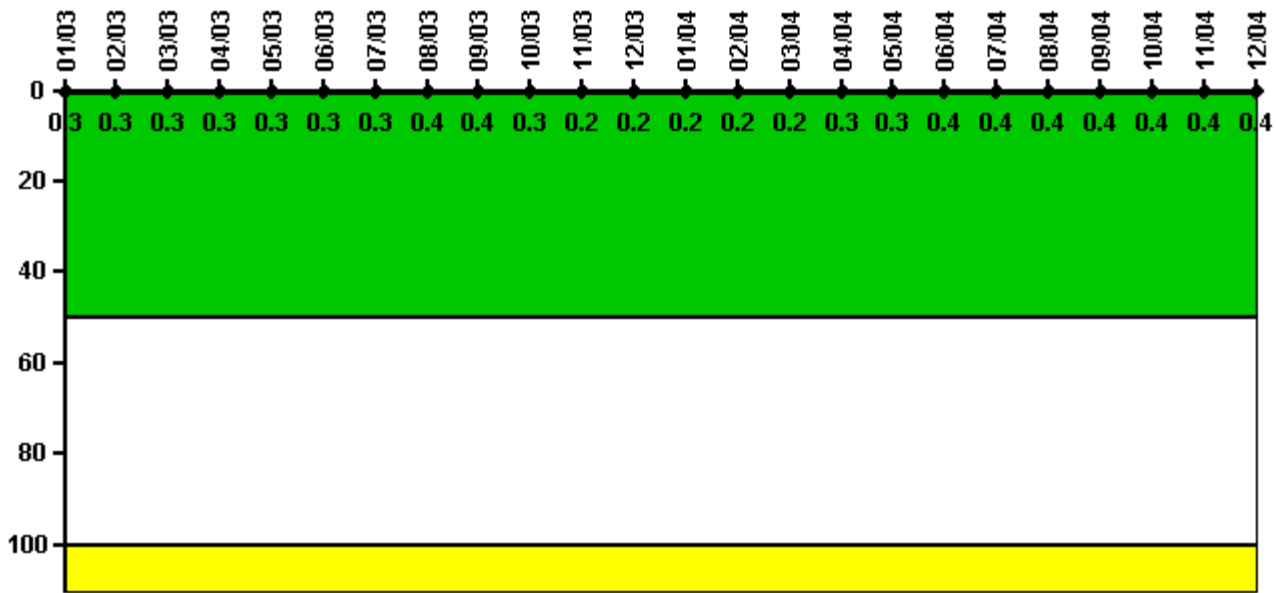
Thresholds: White > 5.0

Notes

Safety System Functional Failures (PWR)	1Q/03	2Q/03	3Q/03	4Q/03	1Q/04	2Q/04	3Q/04	4Q/04
Safety System Functional Failures	0	0	0	0	0	0	0	0
Indicator value	2	0	0	0	0	0	0	0

Licensee Comments: none

Reactor Coolant System Activity



Thresholds: White > 50.0 Yellow > 100.0

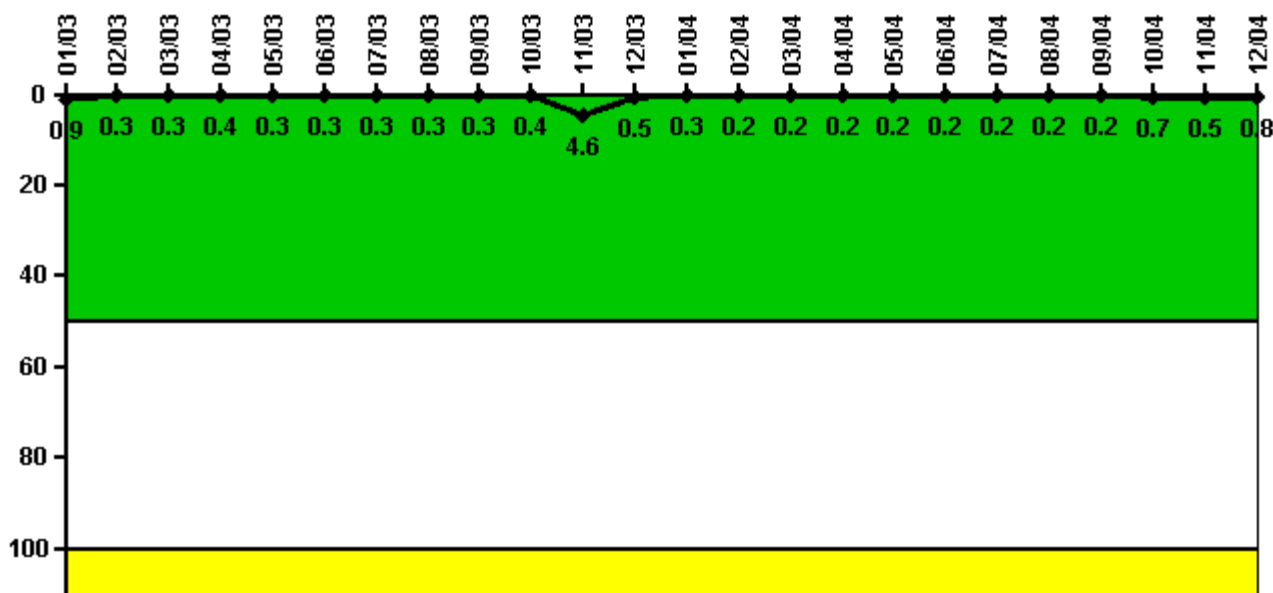
Notes

Reactor Coolant System Activity	1/03	2/03	3/03	4/03	5/03	6/03	7/03	8/03	9/03	10/03	11/03	12/03
Maximum activity	0.002890	0.002810	0.002970	0.003260	0.003300	0.003350	0.003420	0.003750	0.003520	0.002950	0.002430	0.001880
Technical specification limit	1.0	1.0	1.0	1.0	1.0	1.0	1.0	1.0	1.0	1.0	1.0	1.0
Indicator value	0.3	0.3	0.3	0.3	0.3	0.3	0.3	0.4	0.4	0.3	0.2	0.2
Reactor Coolant System Activity	1/04	2/04	3/04	4/04	5/04	6/04	7/04	8/04	9/04	10/04	11/04	12/04
Maximum activity	0.001920	0.002120	0.002410	0.002840	0.003340	0.003600	0.003660	0.003660	0.003930	0.004410	0.004250	0.004330
Technical specification limit	1.0	1.0	1.0	1.0	1.0	1.0	1.0	1.0	1.0	1.0	1.0	1.0
Indicator value	0.2	0.2	0.2	0.3	0.3	0.4	0.4	0.4	0.4	0.4	0.4	0.4

Licensee Comments:

12/03: A change report was submitted with the 4th Quarter 2004 data package that revised October 2003 Reactor Coolant System Specific Activity from 0.04670 uCi/gm to 0.00295 uCi/gm. A re-assessment of the data determined that the previous value was obtained shortly after a planned plant shutdown, while the measurement is only applicable if it is taken at steady state plant conditions. The revision of this data does not change the previously determined performance indicator color.

Reactor Coolant System Leakage



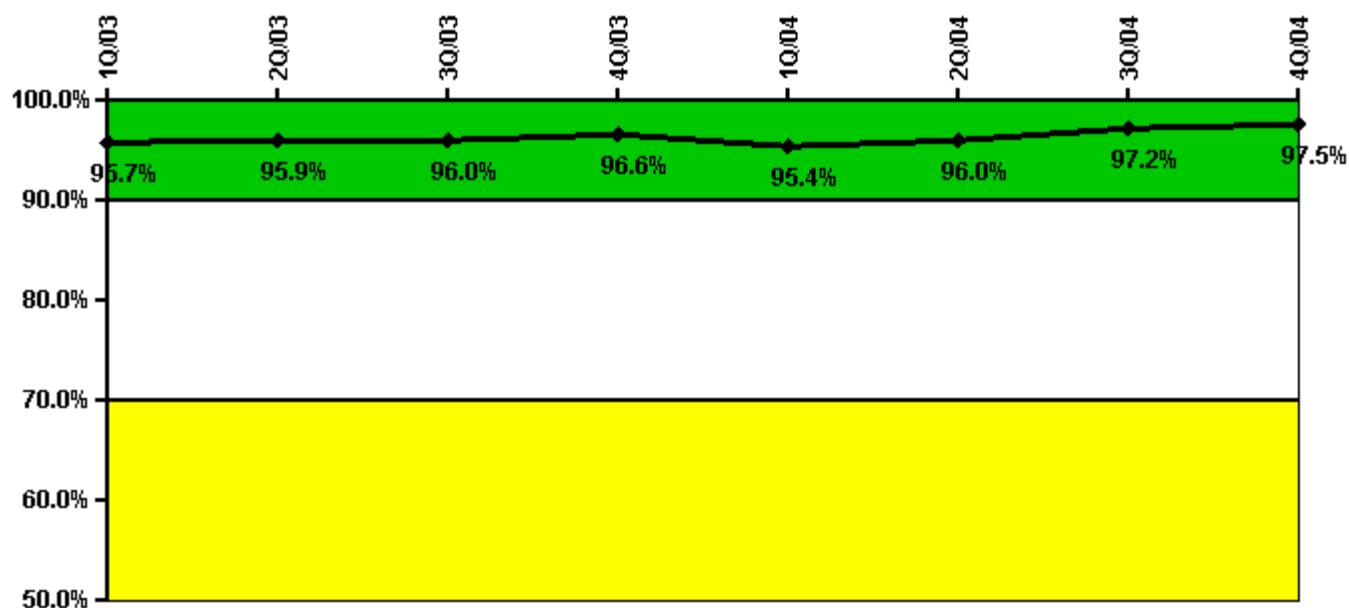
Thresholds: White > 50.0 Yellow > 100.0

Notes

Reactor Coolant System Leakage	1/03	2/03	3/03	4/03	5/03	6/03	7/03	8/03	9/03	10/03	11/03	12/03
Maximum leakage	0.089	0.033	0.028	0.038	0.028	0.027	0.027	0.028	0.028	0.037	0.464	0.046
Technical specification limit	10.0	10.0	10.0	10.0	10.0	10.0	10.0	10.0	10.0	10.0	10.0	10.0
Indicator value	0.9	0.3	0.3	0.4	0.3	0.3	0.3	0.3	0.3	0.4	4.6	0.5
Reactor Coolant System Leakage	1/04	2/04	3/04	4/04	5/04	6/04	7/04	8/04	9/04	10/04	11/04	12/04
Maximum leakage	0.026	0.017	0.018	0.020	0.021	0.016	0.018	0.020	0.022	0.072	0.052	0.077
Technical specification limit	10.0	10.0	10.0	10.0	10.0	10.0	10.0	10.0	10.0	10.0	10.0	10.0
Indicator value	0.3	0.2	0.2	0.2	0.2	0.2	0.2	0.2	0.2	0.7	0.5	0.8

Licensee Comments: none

Drill/Exercise Performance



Thresholds: White < 90.0% Yellow < 70.0%

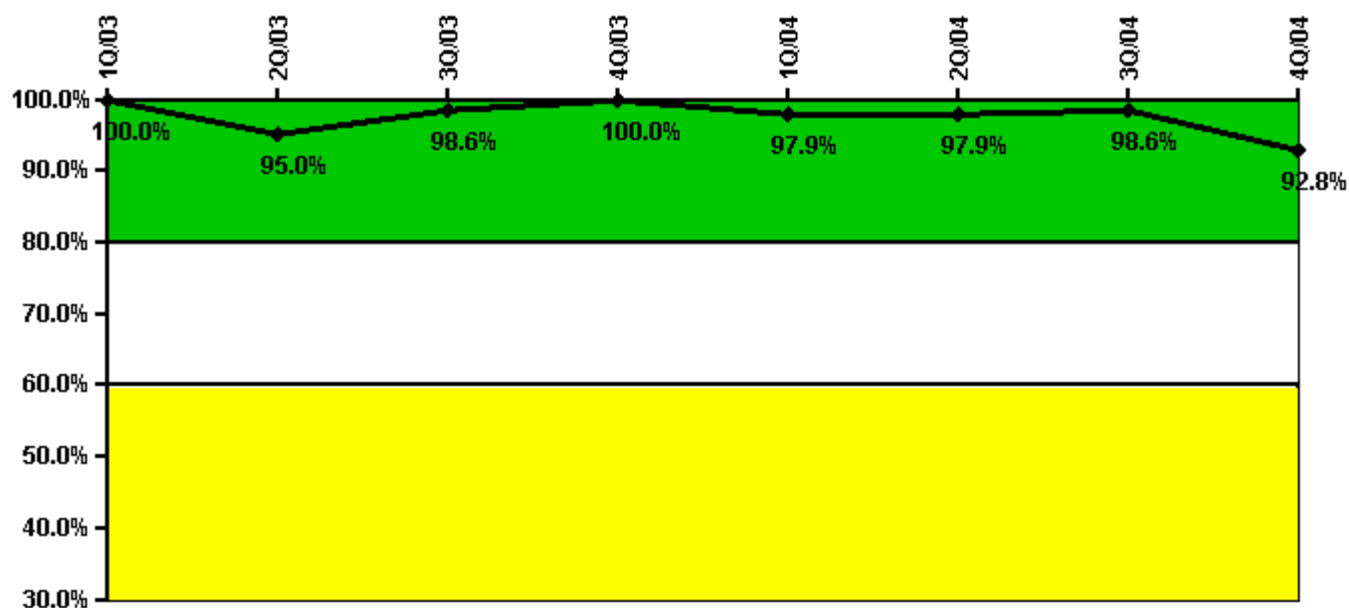
Notes

Drill/Exercise Performance	1Q/03	2Q/03	3Q/03	4Q/03	1Q/04	2Q/04	3Q/04	4Q/04
Successful opportunities	25.0	32.0	25.0	6.0	24.0	22.0	14.0	10.0
Total opportunities	26.0	32.0	26.0	6.0	26.0	22.0	14.0	10.0
Indicator value	95.7%	95.9%	96.0%	96.6%	95.4%	96.0%	97.2%	97.5%

Licensee Comments:

3Q/03: A change report was submitted with the 4th Quarter 2004 data package that revised the number of successful Drill and Exercise Performances for September 2003 to 25 from the originally reported value of 26. The data is revised based on reanalysis of a drill exercise and does not change the previously determined performance indicator color.

ERO Drill Participation



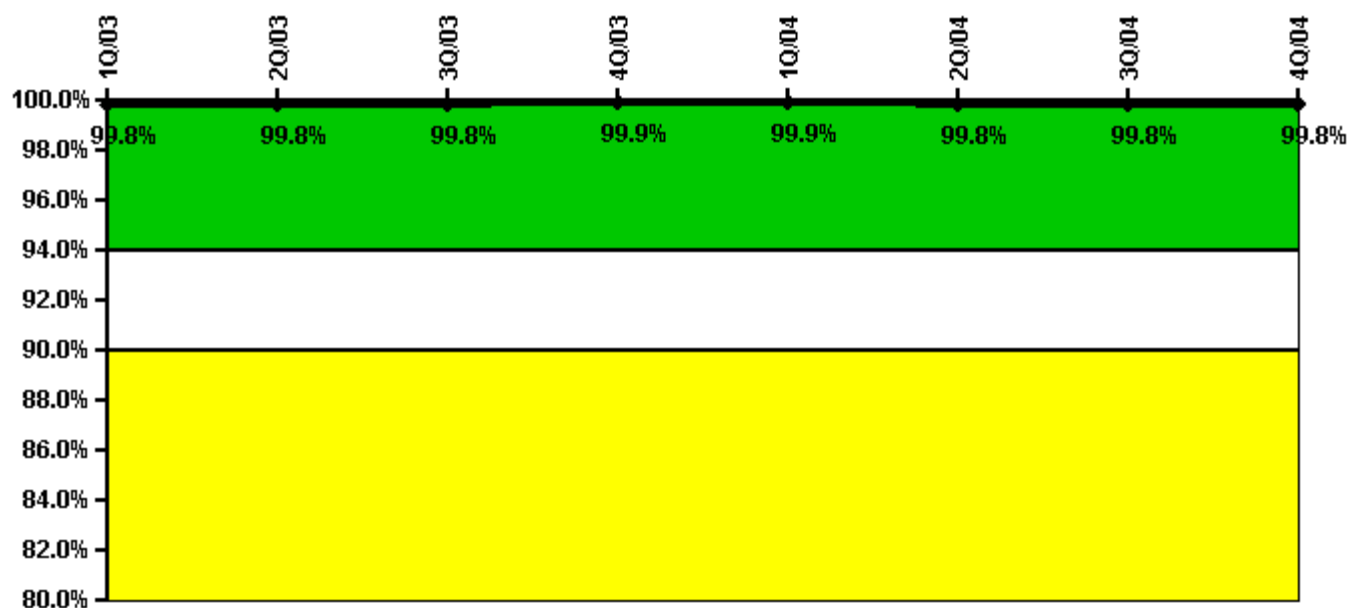
Thresholds: White < 80.0% Yellow < 60.0%

Notes

ERO Drill Participation	1Q/03	2Q/03	3Q/03	4Q/03	1Q/04	2Q/04	3Q/04	4Q/04
Participating Key personnel	130.0	133.0	140.0	141.0	140.0	138.0	137.0	128.0
Total Key personnel	130.0	140.0	142.0	141.0	143.0	141.0	139.0	138.0
Indicator value	100.0%	95.0%	98.6%	100.0%	97.9%	97.9%	98.6%	92.8%

Licensee Comments: none

Alert & Notification System



Thresholds: White < 94.0% Yellow < 90.0%

Notes

Alert & Notification System	1Q/03	2Q/03	3Q/03	4Q/03	1Q/04	2Q/04	3Q/04	4Q/04
Successful siren-tests	420	419	419	420	432	430	431	432
Total sirens-tests	420	420	420	420	432	432	432	432
Indicator value	99.8%	99.8%	99.8%	99.9%	99.9%	99.8%	99.8%	99.8%

Licensee Comments: none

Occupational Exposure Control Effectiveness



Thresholds: White > 2.0 Yellow > 5.0

Notes

Occupational Exposure Control Effectiveness	1Q/03	2Q/03	3Q/03	4Q/03	1Q/04	2Q/04	3Q/04	4Q/04
High radiation area occurrences	0	0	0	0	0	0	0	0
Very high radiation area occurrences	0	0	0	0	0	0	0	0
Unintended exposure occurrences	0	0	0	0	0	0	0	0
Indicator value	0	0	0	0	0	0	0	0

Licensee Comments: none

RETS/ODCM Radiological Effluent



Thresholds: White > 1.0 Yellow > 3.0

Notes

RETS/ODCM Radiological Effluent	1Q/03	2Q/03	3Q/03	4Q/03	1Q/04	2Q/04	3Q/04	4Q/04
RETS/ODCM occurrences	0	0	0	0	0	0	0	0
Indicator value	0	0	0	0	0	0	0	0

Licensee Comments: none

[Physical Protection](#) information not publicly available.

▲ [Action Matrix Summary](#) | [Inspection Findings Summary](#) | [PI Summary](#) | [Reactor Oversight Process](#)

Last Modified: March 9, 2005