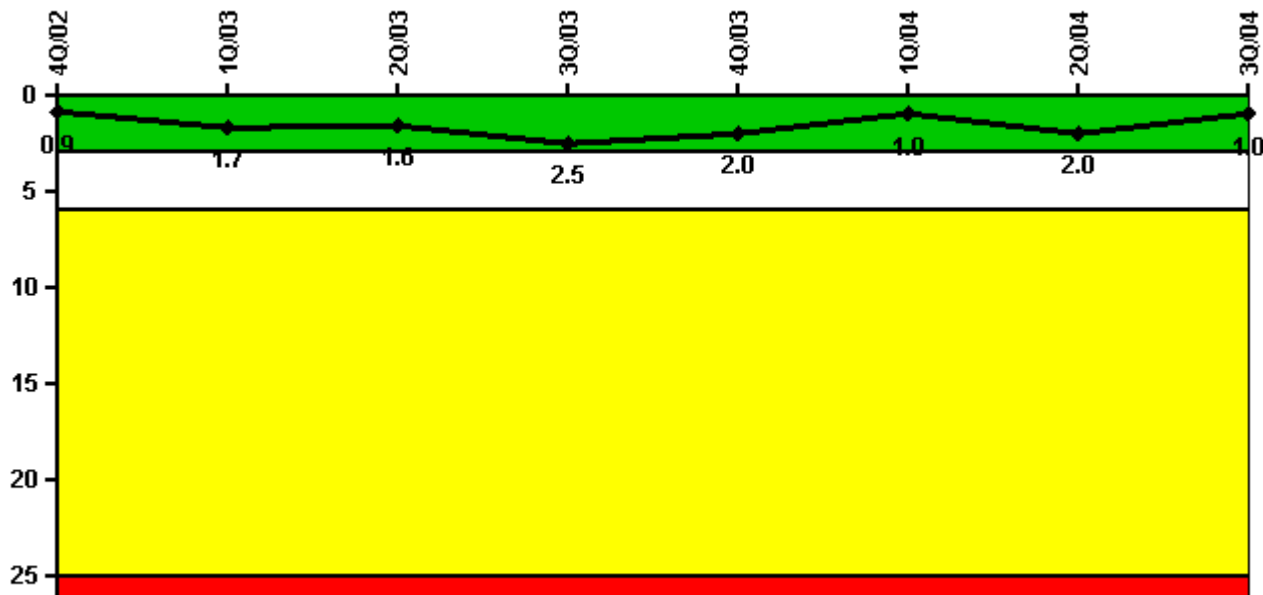


Surry 2

3Q/2004 Performance Indicators

Licensee's General Comments: none

Unplanned Scrams per 7000 Critical Hrs



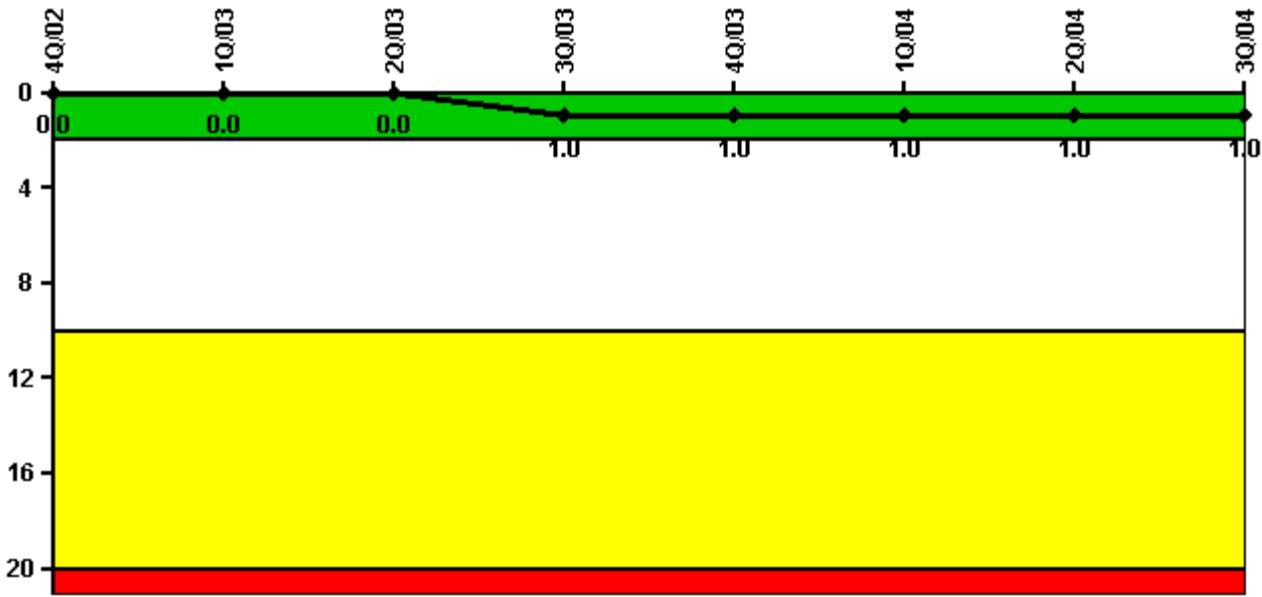
Thresholds: White > 3.0 Yellow > 6.0 Red > 25.0

Notes

Unplanned Scrams per 7000 Critical Hrs	4Q/02	1Q/03	2Q/03	3Q/03	4Q/03	1Q/04	2Q/04	3Q/04
Unplanned scrams	1.0	1.0	0	1.0	0	0	1.0	0
Critical hours	2172.7	2097.1	2183.0	1913.5	885.3	2184.0	2028.5	2208.0
Indicator value	0.9	1.7	1.6	2.5	2.0	1.0	2.0	1.0

Licensee Comments: none

Scrams with Loss of Normal Heat Removal



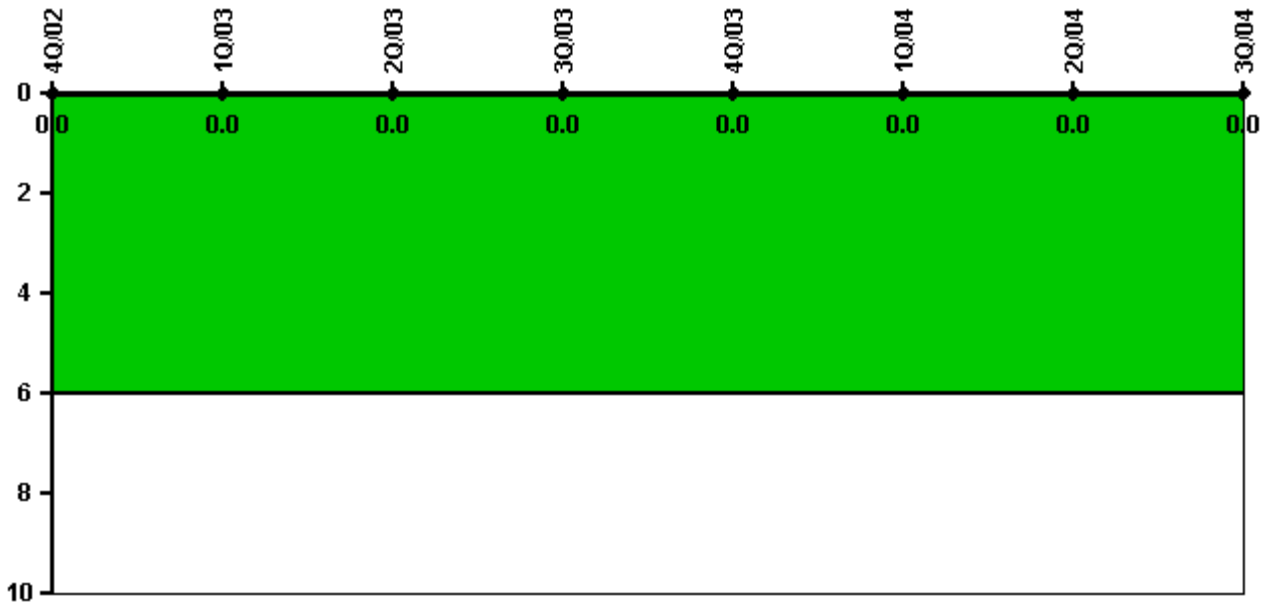
Thresholds: White > 2.0 Yellow > 10.0 Red > 20.0

Notes

Scrams with Loss of Normal Heat Removal	4Q/02	1Q/03	2Q/03	3Q/03	4Q/03	1Q/04	2Q/04	3Q/04
Scrams	0	0	0	1.0	0	0	0	0
Indicator value	0	0	0	1.0	1.0	1.0	1.0	1.0

Licensee Comments: none

Unplanned Power Changes per 7000 Critical Hrs



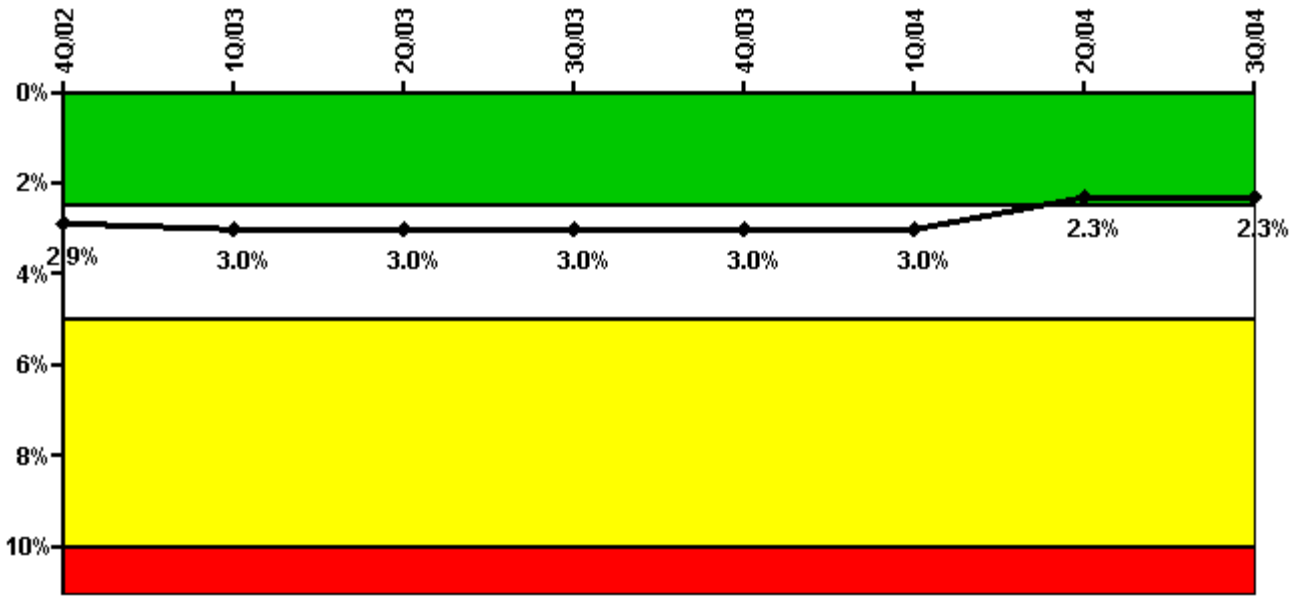
Thresholds: White > 6.0

Notes

Unplanned Power Changes per 7000 Critical Hrs	4Q/02	1Q/03	2Q/03	3Q/03	4Q/03	1Q/04	2Q/04	3Q/04
Unplanned power changes	0	0	0	0	0	0	0	0
Critical hours	2172.7	2097.1	2183.0	1913.5	885.3	2184.0	2028.5	2208.0
Indicator value	0	0	0	0	0	0	0	0

Licensee Comments: none

Safety System Unavailability, Emergency AC Power



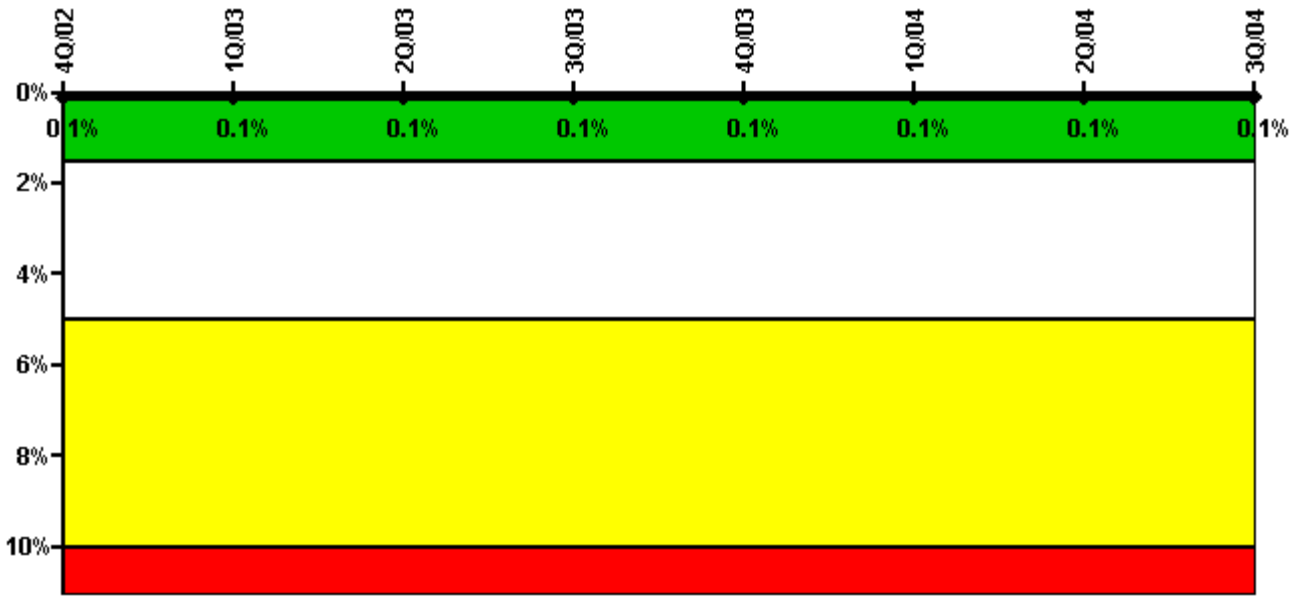
Thresholds: White > 2.5% Yellow > 5.0% Red > 10.0%

Notes

Safety System Unavailability, Emergency AC Power	4Q/02	1Q/03	2Q/03	3Q/03	4Q/03	1Q/04	2Q/04	3Q/04
Train 1								
Planned unavailable hours	11.90	29.87	9.27	90.55	6.87	17.66	14.02	20.96
Unplanned unavailable hours	0	0	1.90	16.23	0	1.38	2.67	18.87
Fault exposure hours	0	0	0	0	0	0	0	0
Effective Reset hours	0	0	0	0	0	0	0	0
Required hours	2209.00	2160.00	2183.00	1952.88	1215.90	2184.00	2112.92	2208.00
Train 2								
Planned unavailable hours	138.18	14.73	62.79	13.16	8.92	21.35	18.77	21.80
Unplanned unavailable hours	85.35	18.17	38.62	0	0	0	9.23	0
Fault exposure hours	0	0	0	0	0	0	0	0
Effective Reset hours	0	0	0	0	0	0	0	0
Required hours	2209.00	2160.00	2183.00	1952.88	1215.90	2184.00	2112.92	2208.00
Indicator value	2.9%	3.0%	3.0%	3.0%	3.0%	3.0%	2.3%	2.3%

Licensee Comments: none

Safety System Unavailability, High Pressure Injection System (HPSI)



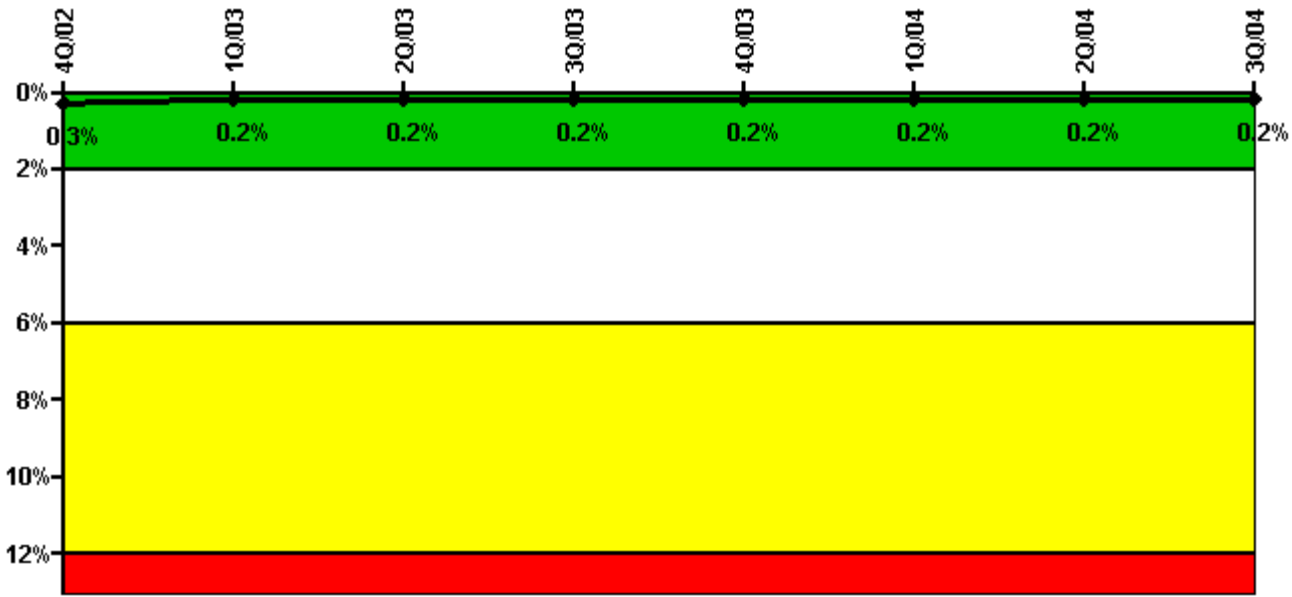
Thresholds: White > 1.5% Yellow > 5.0% Red > 10.0%

Notes

Safety System Unavailability, High Pressure Injection System (HPSI)	4Q/02	1Q/03	2Q/03	3Q/03	4Q/03	1Q/04	2Q/04	3Q/04
Train 1								
Planned unavailable hours	1.84	0	0	4.96	0	6.35	1.38	1.20
Unplanned unavailable hours	0	0	0	0	0	0.80	0	0
Fault exposure hours	0	0	0	0	0	0	0	0
Effective Reset hours	0	0	0	0	0	0	0	0
Required hours	2209.00	2160.00	2183.00	1953.00	896.00	2184.00	2029.00	2208.00
Train 2								
Planned unavailable hours	12.16	1.05	1.30	2.30	0	2.71	3.04	6.96
Unplanned unavailable hours	0	0	0	0	0	0	0	0
Fault exposure hours	0	0	0	0	0	0	0	0
Effective Reset hours	0	0	0	0	0	0	0	0
Required hours	2209.00	2160.00	2183.00	1953.00	896.00	2184.00	2029.00	2208.00
Indicator value	0.1%	0.1%	0.1%	0.1%	0.1%	0.1%	0.1%	0.1%

Licensee Comments: none

Safety System Unavailability, Heat Removal System (AFW)



Thresholds: White > 2.0% Yellow > 6.0% Red > 12.0%

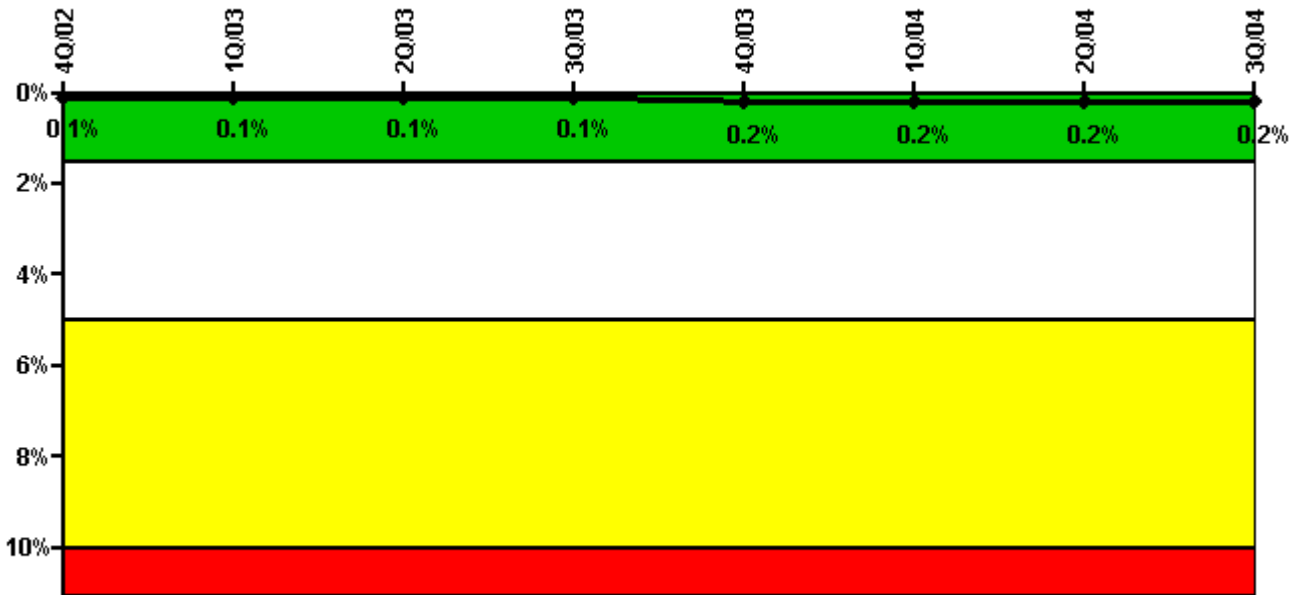
Notes

Safety System Unavailability, Heat Removal System (AFW)	4Q/02	1Q/03	2Q/03	3Q/03	4Q/03	1Q/04	2Q/04	3Q/04
Train 1								
Planned unavailable hours	1.60	9.56	0.77	0.80	9.15	0.73	0	1.33
Unplanned unavailable hours	0	0	0	0	0	0	3.52	0
Fault exposure hours	0	0	0	0	0	0	0	0
Effective Reset hours	0	0	0	0	0	0	0	0
Required hours	2209.00	2160.00	2183.00	1953.00	896.00	2184.00	2113.00	2208.00
Train 2								
Planned unavailable hours	0.82	0.98	5.58	2.15	0	10.00	2.15	1.07
Unplanned unavailable hours	0	0	0	0	0	0	0	0
Fault exposure hours	0	0	0	0	0	0	0	0
Effective Reset hours	0	0	0	0	0	0	0	0
Required hours	2209.00	2160.00	2183.00	1953.00	896.00	2184.00	2113.00	2208.00
Train 3								
Planned unavailable hours	1.80	2.32	16.93	2.16	0.90	1.88	5.07	17.37
Unplanned unavailable hours	0	0	0	0	0	0	8.82	0
Fault exposure hours	0	0	0	0	0	0	0	0
Effective Reset hours	0	0	0	0	0	0	0	0
Required hours	2209.00	2160.00	2183.00	1953.00	680.00	2184.00	2041.70	2208.00
Indicator value	0.3%	0.2%	0.2%	0.2%	0.2%	0.2%	0.2%	0.2%

Licensee Comments:

3Q/04: A self-assessment revealed data entered for June 2004 was inaccurate. Data was corrected with no change in color.

Safety System Unavailability, Residual Heat Removal System



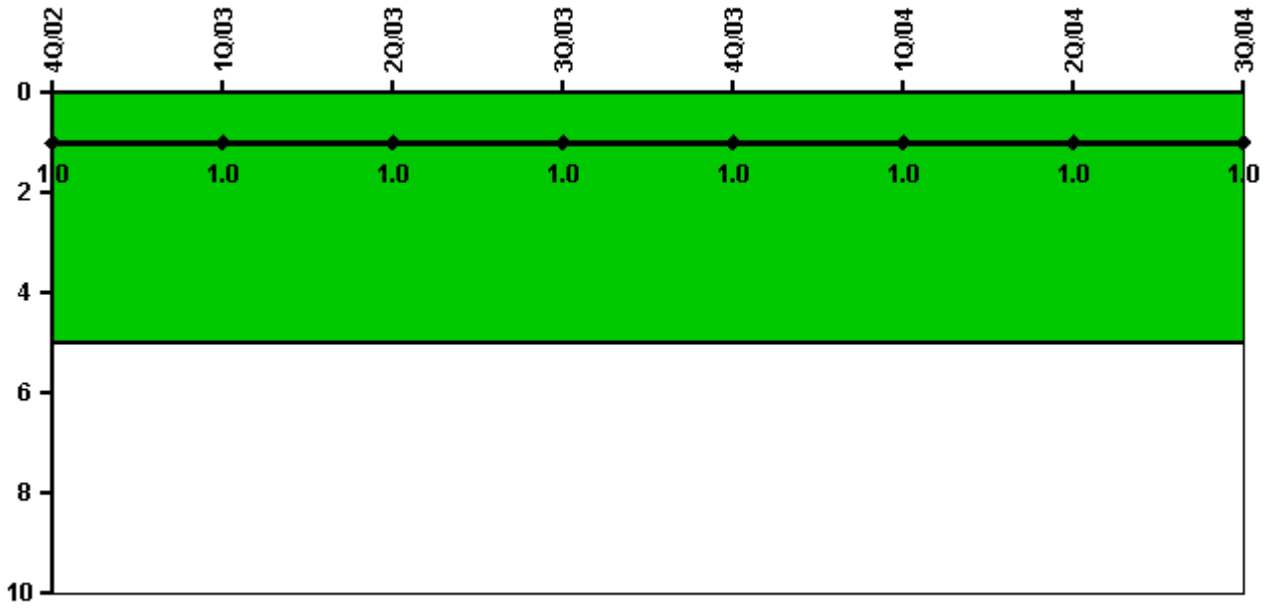
Thresholds: White > 1.5% Yellow > 5.0% Red > 10.0%

Notes

Safety System Unavailability, Residual Heat Removal System	4Q/02	1Q/03	2Q/03	3Q/03	4Q/03	1Q/04	2Q/04	3Q/04
Train 1								
Planned unavailable hours	5.79	0.05	0.70	0.33	19.70	9.19	0.15	14.68
Unplanned unavailable hours	0.25	0	0	0	0	0	0	0
Fault exposure hours	0	0	0	0	0	0	0	0
Effective Reset hours	0	0	0	0	0	0	0	0
Required hours	2209.00	2097.00	2183.00	1953.00	1439.00	2184.00	2029.00	2208.00
Train 2								
Planned unavailable hours	23.45	1.11	1.20	0.33	19.70	15.25	13.79	0.75
Unplanned unavailable hours	0	0	0	0.50	0	22.77	0	0
Fault exposure hours	0	0	0	0	0	0	0	0
Effective Reset hours	0	0	0	0	0	0	0	0
Required hours	2209.00	2097.00	2183.00	1953.00	1439.00	2184.00	2029.00	2208.00
Train 3								
Planned unavailable hours	0	0	0	11.60	20.10	0	0	0
Unplanned unavailable hours	0	0	0	0	0	0	0	0
Fault exposure hours	0	0	0	0	0	0	0	0
Effective Reset hours	0	0	0	0	0	0	0	0
Required hours	2209.00	2097.00	2183.00	2208.00	1687.00	2184.00	2183.00	2208.00
Train 4								
Planned unavailable hours	0	0	0	10.70	0	0	0	0
Unplanned unavailable hours	0	0	0	0	0	0	0	0
Fault exposure hours	0	0	0	0	0	0	0	0
Effective Reset hours	0	0	0	0	0	0	0	0
Required hours	2209.00	2097.00	2183.00	2208.00	1687.00	2184.00	2183.00	2208.00
Indicator value	0.1%	0.1%	0.1%	0.1%	0.2%	0.2%	0.2%	0.2%

Licensee Comments: none

Safety System Functional Failures (PWR)



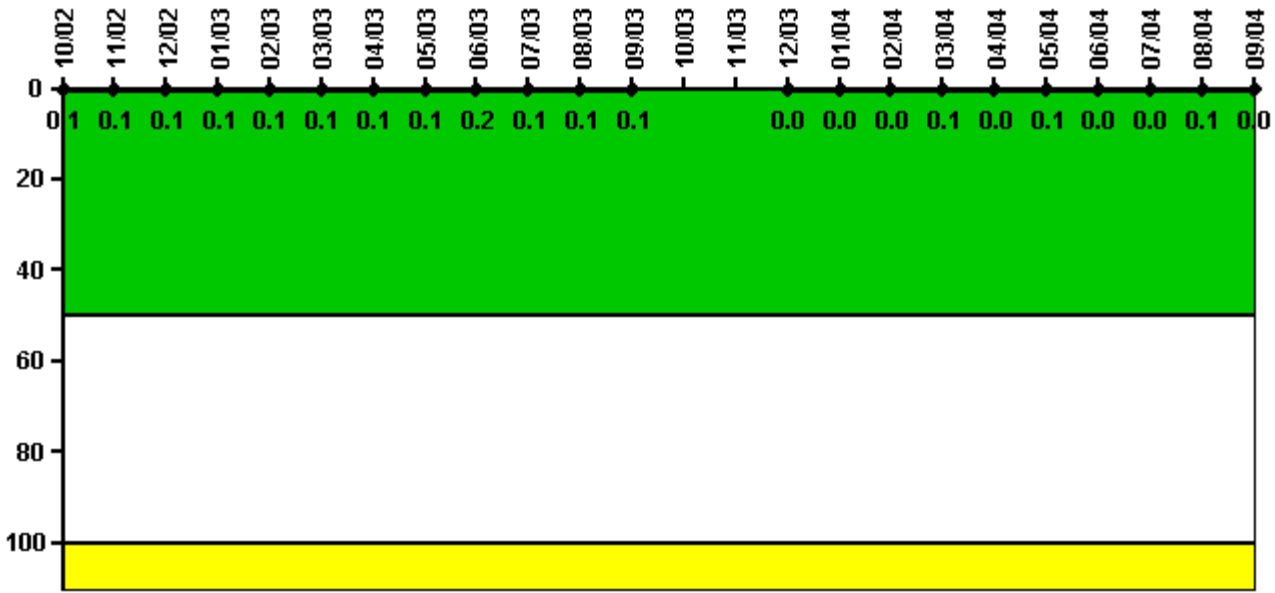
Thresholds: White > 5.0

Notes

Safety System Functional Failures (PWR)	4Q/02	1Q/03	2Q/03	3Q/03	4Q/03	1Q/04	2Q/04	3Q/04
Safety System Functional Failures	1	0	0	0	1	0	0	0
Indicator value	1	1	1	1	1	1	1	1

Licensee Comments: none

Reactor Coolant System Activity



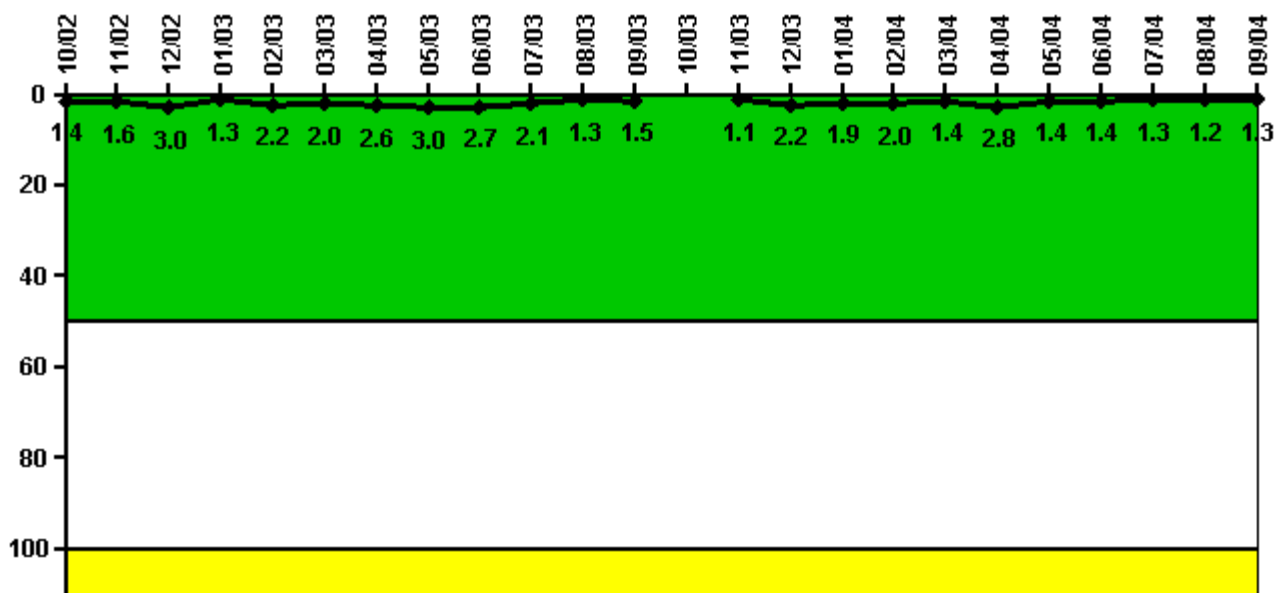
Thresholds: White > 50.0 Yellow > 100.0

Notes

Reactor Coolant System Activity	10/02	11/02	12/02	1/03	2/03	3/03	4/03	5/03	6/03	7/03	8/03	9/03
Maximum activity	0.000729	0.000738	0.000758	0.000768	0.000753	0.000760	0.000903	0.001010	0.001870	0.000857	0.000853	0.001030
Technical specification limit	1.0	1.0	1.0	1.0	1.0	1.0	1.0	1.0	1.0	1.0	1.0	1.0
Indicator value	0.1	0.1	0.1	0.1	0.1	0.1	0.1	0.1	0.2	0.1	0.1	0.1
Reactor Coolant System Activity	10/03	11/03	12/03	1/04	2/04	3/04	4/04	5/04	6/04	7/04	8/04	9/04
Maximum activity	N/A	N/A	0.000318	0.000338	0.000316	0.000544	0.000345	0.000532	0.000437	0.000343	0.000807	0.000468
Technical specification limit	1.0	1.0	1.0	1.0	1.0	1.0	1.0	1.0	1.0	1.0	1.0	1.0
Indicator value	N/A	N/A	0	0	0	0.1	0	0.1	0	0	0.1	0

Licensee Comments: none

Reactor Coolant System Leakage



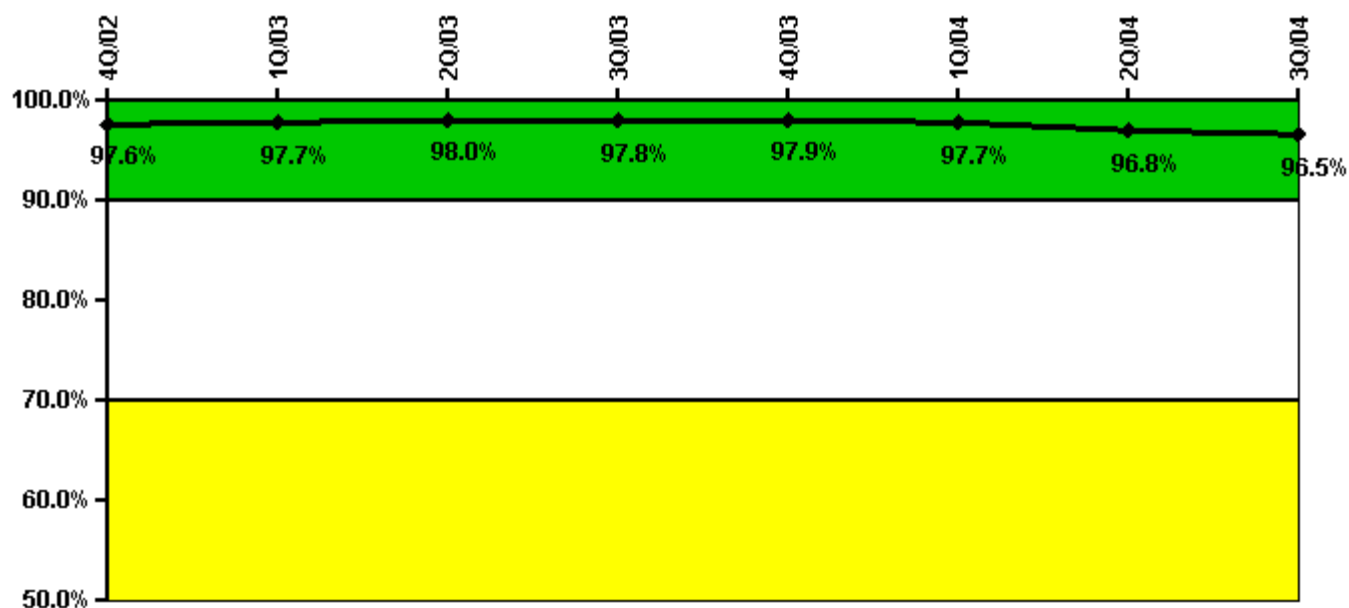
Thresholds: White > 50.0 Yellow > 100.0

Notes

Reactor Coolant System Leakage	10/02	11/02	12/02	1/03	2/03	3/03	4/03	5/03	6/03	7/03	8/03	9/03
Maximum leakage	0.140	0.160	0.300	0.130	0.220	0.200	0.260	0.300	0.270	0.210	0.130	0.150
Technical specification limit	10.0	10.0	10.0	10.0	10.0	10.0	10.0	10.0	10.0	10.0	10.0	10.0
Indicator value	1.4	1.6	3.0	1.3	2.2	2.0	2.6	3.0	2.7	2.1	1.3	1.5
Reactor Coolant System Leakage	10/03	11/03	12/03	1/04	2/04	3/04	4/04	5/04	6/04	7/04	8/04	9/04
Maximum leakage	N/A	0.110	0.220	0.190	0.200	0.140	0.280	0.140	0.140	0.130	0.120	0.130
Technical specification limit	10.0	10.0	10.0	10.0	10.0	10.0	10.0	10.0	10.0	10.0	10.0	10.0
Indicator value	N/A	1.1	2.2	1.9	2.0	1.4	2.8	1.4	1.4	1.3	1.2	1.3

Licensee Comments: none

Drill/Exercise Performance



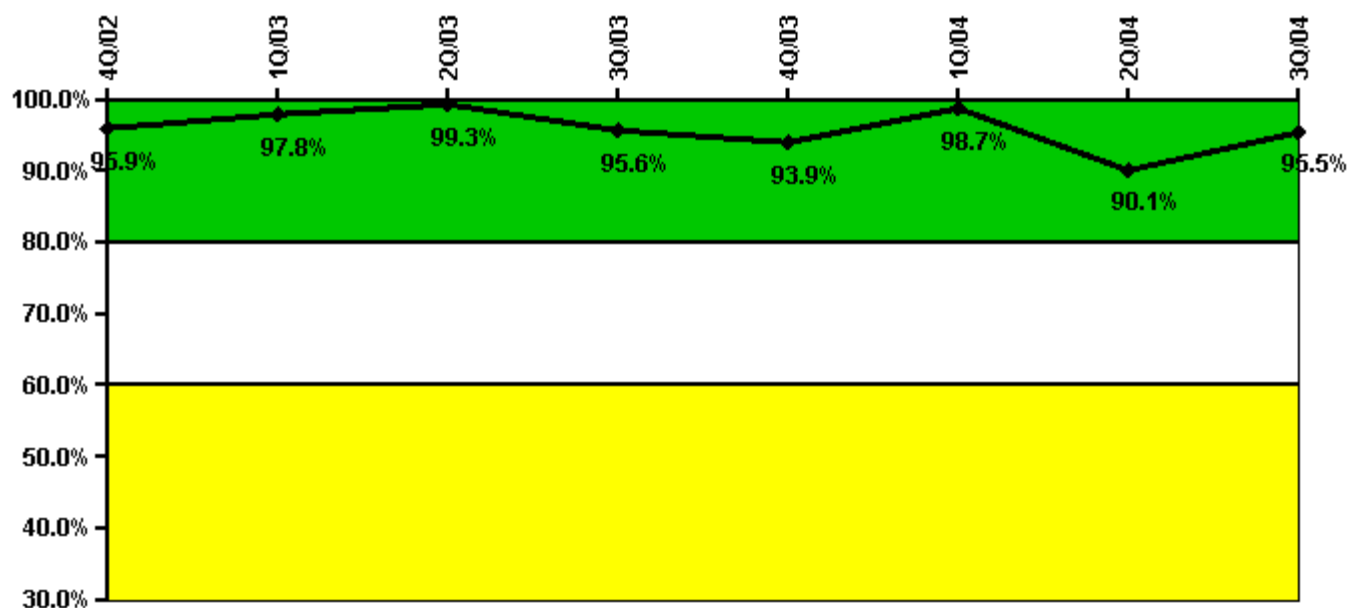
Thresholds: White < 90.0% Yellow < 70.0%

Notes

Drill/Exercise Performance	4Q/02	1Q/03	2Q/03	3Q/03	4Q/03	1Q/04	2Q/04	3Q/04
Successful opportunities	18.0	14.0	48.0	51.0	0	16.0	12.0	32.0
Total opportunities	18.0	14.0	49.0	54.0	0	16.0	13.0	34.0
Indicator value	97.6%	97.7%	98.0%	97.8%	97.9%	97.7%	96.8%	96.5%

Licensee Comments: none

ERO Drill Participation



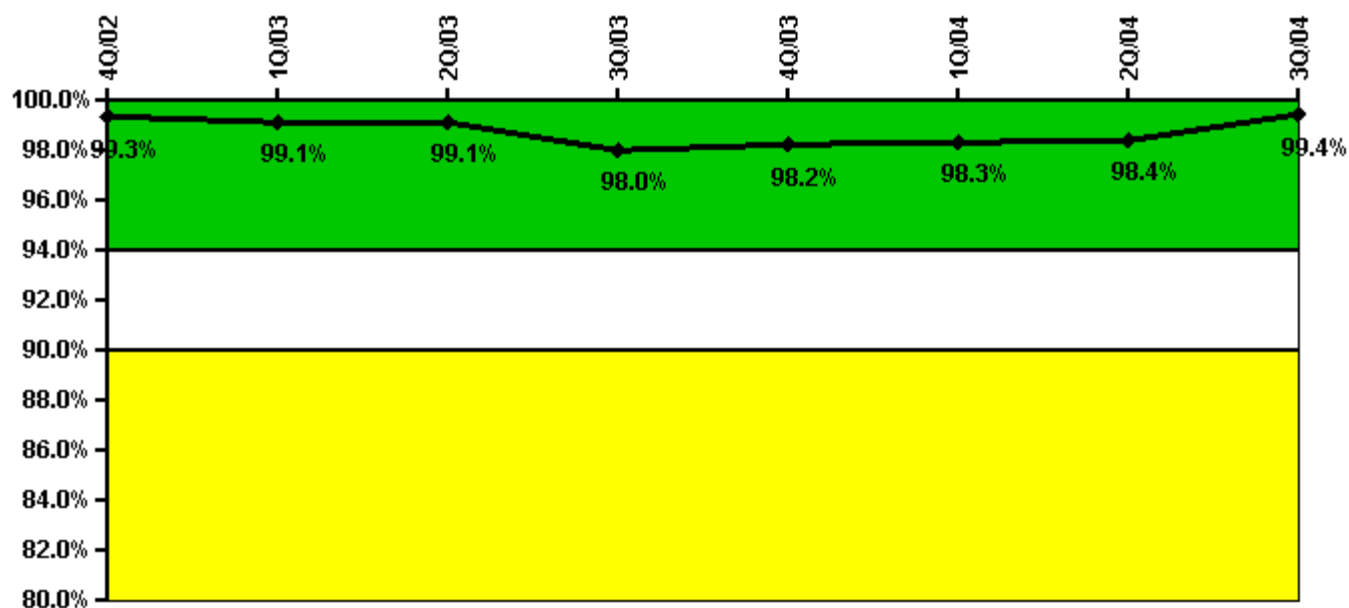
Thresholds: White < 80.0% Yellow < 60.0%

Notes

ERO Drill Participation	4Q/02	1Q/03	2Q/03	3Q/03	4Q/03	1Q/04	2Q/04	3Q/04
Participating Key personnel	140.0	136.0	137.0	152.0	154.0	156.0	145.0	150.0
Total Key personnel	146.0	139.0	138.0	159.0	164.0	158.0	161.0	157.0
Indicator value	95.9%	97.8%	99.3%	95.6%	93.9%	98.7%	90.1%	95.5%

Licensee Comments: none

Alert & Notification System



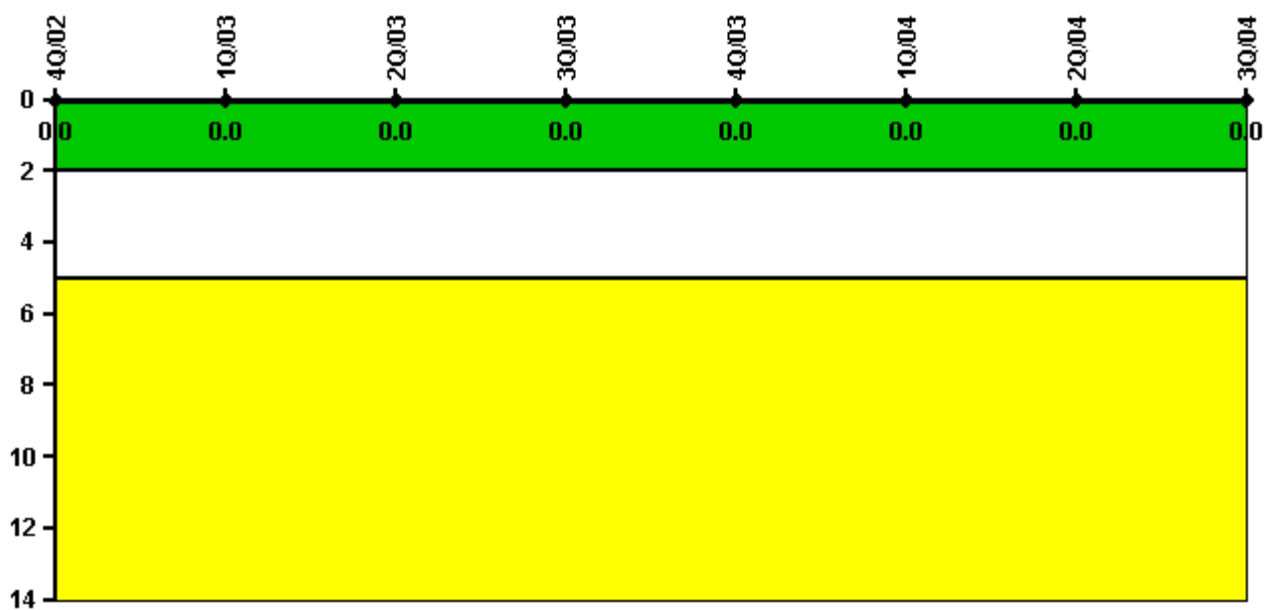
Thresholds: White < 94.0% Yellow < 90.0%

Notes

Alert & Notification System	4Q/02	1Q/03	2Q/03	3Q/03	4Q/03	1Q/04	2Q/04	3Q/04
Successful siren-tests	514	525	531	510	600	467	533	532
Total sirens-tests	520	530	536	536	603	469	536	536
Indicator value	99.3%	99.1%	99.1%	98.0%	98.2%	98.3%	98.4%	99.4%

Licensee Comments: none

Occupational Exposure Control Effectiveness



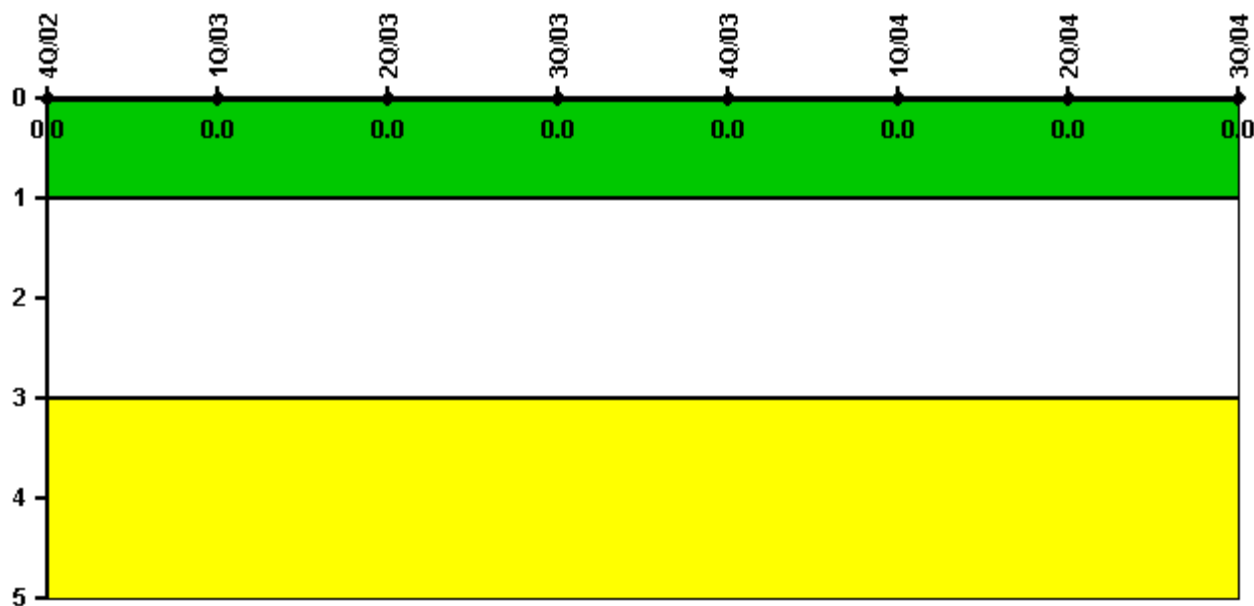
Thresholds: White > 2.0 Yellow > 5.0

Notes

Occupational Exposure Control Effectiveness	4Q/02	1Q/03	2Q/03	3Q/03	4Q/03	1Q/04	2Q/04	3Q/04
High radiation area occurrences	0	0	0	0	0	0	0	0
Very high radiation area occurrences	0	0	0	0	0	0	0	0
Unintended exposure occurrences	0	0	0	0	0	0	0	0
Indicator value	0	0	0	0	0	0	0	0

Licensee Comments: none

RETS/ODCM Radiological Effluent



Thresholds: White > 1.0 Yellow > 3.0

Notes

RETS/ODCM Radiological Effluent	4Q/02	1Q/03	2Q/03	3Q/03	4Q/03	1Q/04	2Q/04	3Q/04
RETS/ODCM occurrences	0	0	0	0	0	0	0	0
Indicator value	0	0	0	0	0	0	0	0

Licensee Comments: none

[Physical Protection](#) information not publicly available.