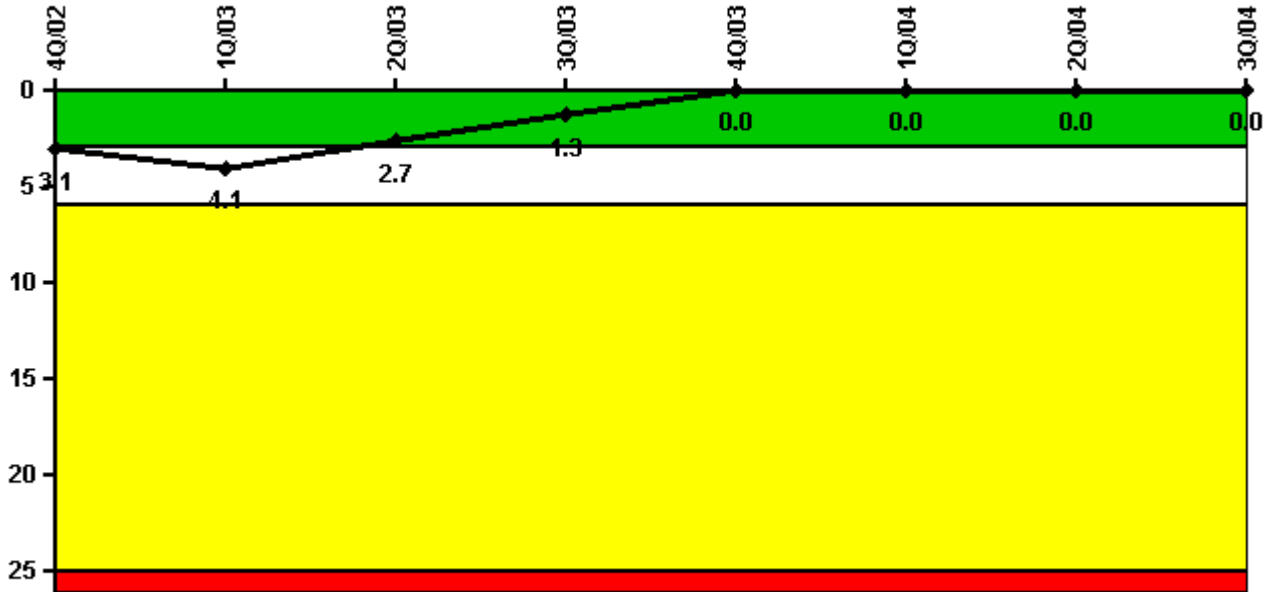


## South Texas 2

### 3Q/2004 Performance Indicators

Licensee's General Comments: none

#### Unplanned Scrams per 7000 Critical Hrs



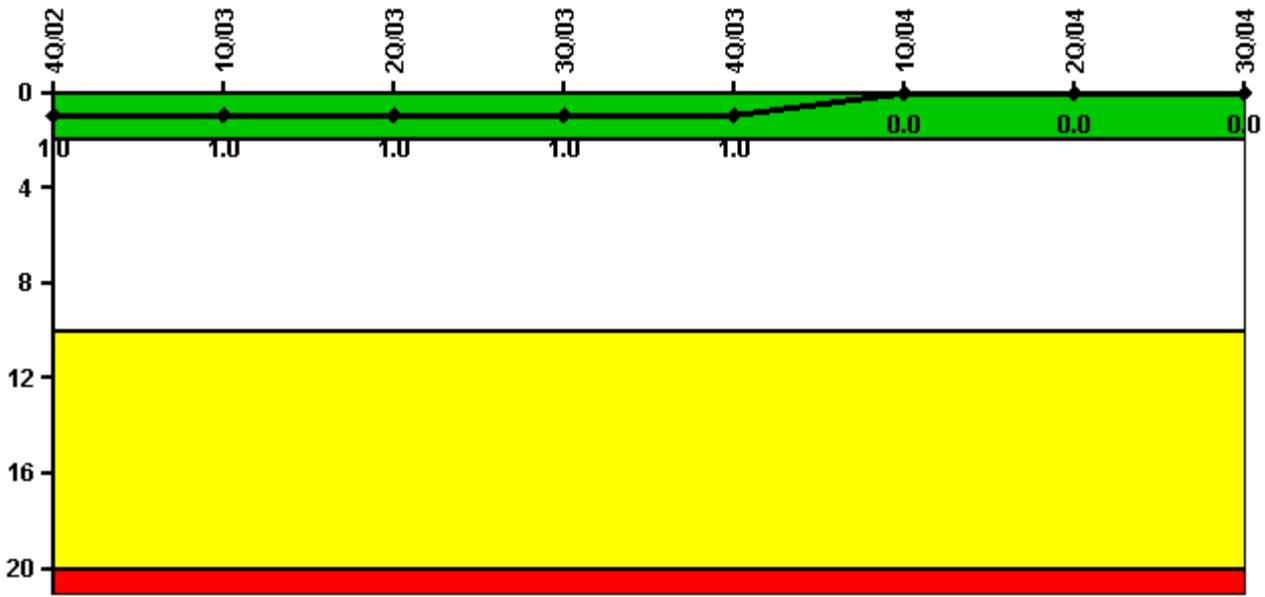
**Thresholds: White > 3.0 Yellow > 6.0 Red > 25.0**

#### Notes

Unplanned Scrams per 7000 Critical Hrs	4Q/02	1Q/03	2Q/03	3Q/03	4Q/03	1Q/04	2Q/04	3Q/04
Unplanned scrams	1.0	0	0	0	0	0	0	0
Critical hours	287.6	546.8	2183.0	2208.0	2209.0	2160.6	1561.6	2208.0
Indicator value	3.1	4.1	2.7	1.3	0	0	0	0

Licensee Comments: none

### Scrams with Loss of Normal Heat Removal



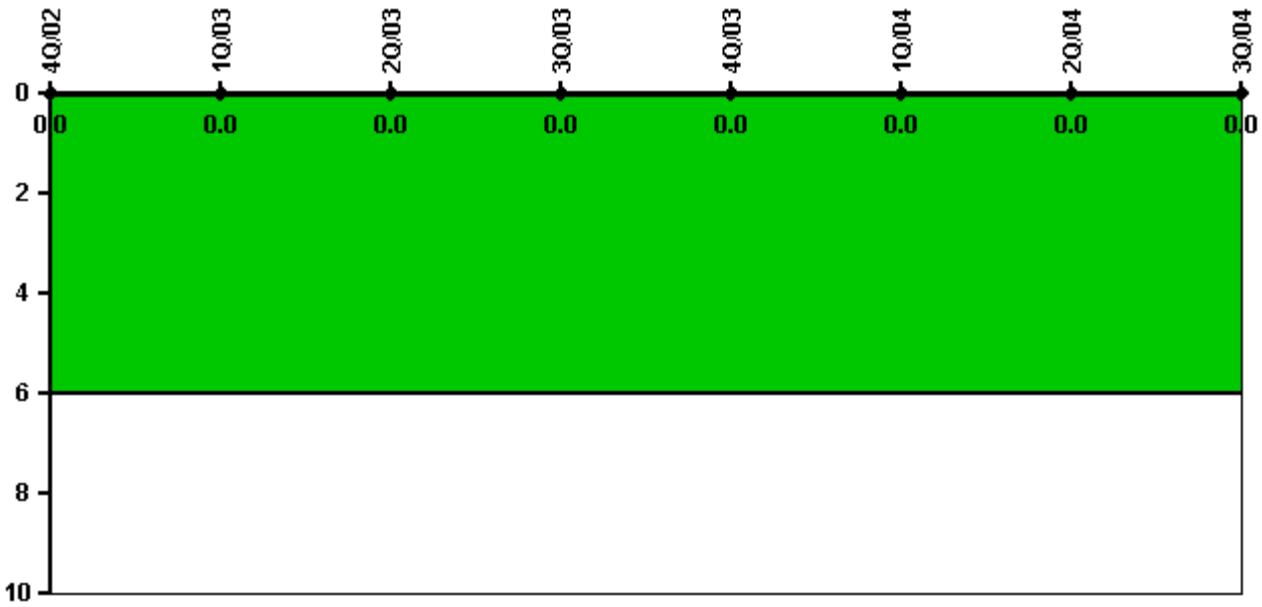
Thresholds: White > 2.0 Yellow > 10.0 Red > 20.0

#### Notes

Scrams with Loss of Normal Heat Removal	4Q/02	1Q/03	2Q/03	3Q/03	4Q/03	1Q/04	2Q/04	3Q/04
Scrams	0	0	0	0	0	0	0	0
Indicator value	1.0	1.0	1.0	1.0	1.0	0	0	0

Licensee Comments: none

### Unplanned Power Changes per 7000 Critical Hrs



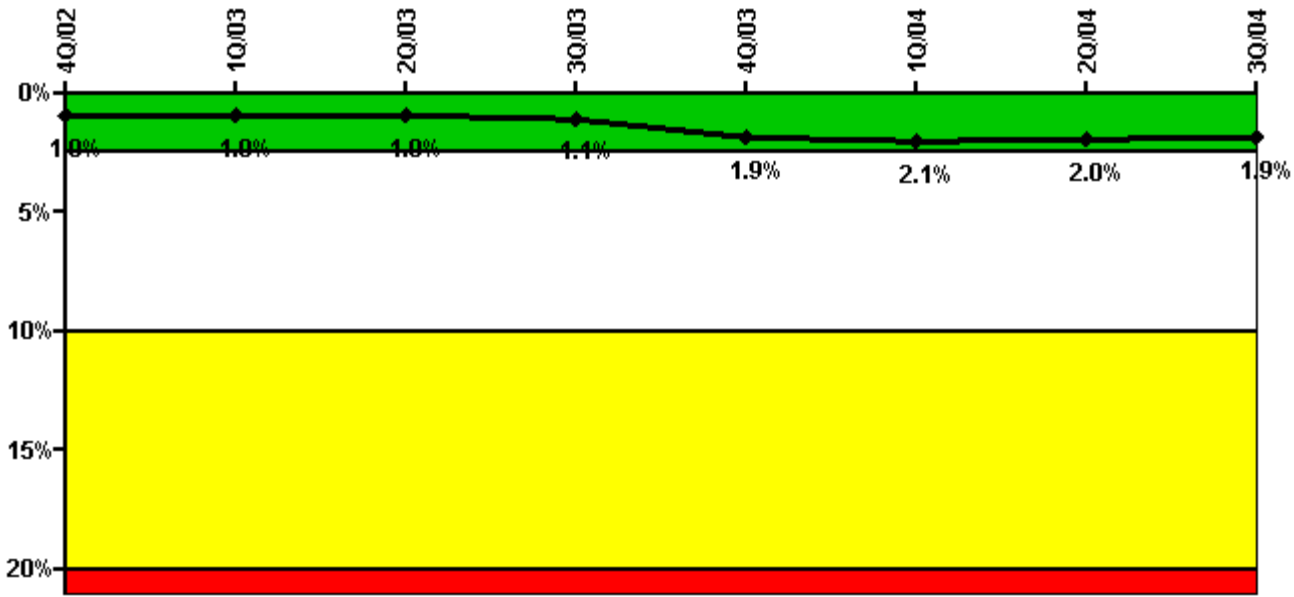
Thresholds: White > 6.0

#### Notes

Unplanned Power Changes per 7000 Critical Hrs	4Q/02	1Q/03	2Q/03	3Q/03	4Q/03	1Q/04	2Q/04	3Q/04
Unplanned power changes	0	0	0	0	0	0	0	0
Critical hours	287.6	546.8	2183.0	2208.0	2209.0	2160.6	1561.6	2208.0
Indicator value	0	0	0	0	0	0	0	0

Licensee Comments: none

### Safety System Unavailability, Emergency AC Power, >2EDG



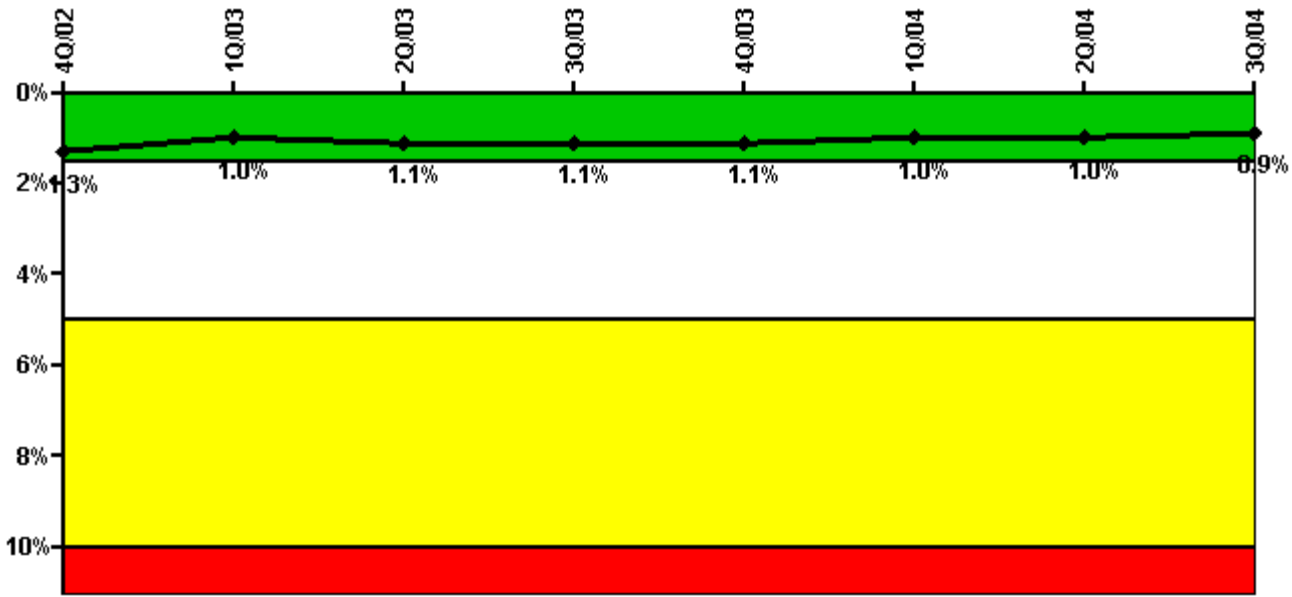
Thresholds: White > 2.5% Yellow > 10.0% Red > 20.0%

#### Notes

Safety System Unavailability, Emergency AC Power, >2EDG	4Q/02	1Q/03	2Q/03	3Q/03	4Q/03	1Q/04	2Q/04	3Q/04
<b>Train 1</b>								
Planned unavailable hours	0	12.52	0	20.90	27.47	0	0	0
Unplanned unavailable hours	0	0	0	0	0	0	0	0
Fault exposure hours	0	0	0	0	0	0	0	0
Effective Reset hours	0	0	0	0	0	0	0	0
Required hours	2209.00	2160.00	2183.00	2208.00	2208.00	2184.00	2183.00	2208.00
<b>Train 2</b>								
Planned unavailable hours	0	0	0	39.74	20.02	0	14.78	16.25
Unplanned unavailable hours	0	0	0	34.18	563.12	229.00	0	0
Fault exposure hours	0	0	0	0	0	0	0	0
Effective Reset hours	0	0	0	0	0	0	0	0
Required hours	2209.00	2160.00	2183.00	2208.00	2208.00	2184.00	2183.00	2208.00
<b>Train 3</b>								
Planned unavailable hours	0	0	15.10	44.83	40.62	0	0	16.24
Unplanned unavailable hours	0	0	7.43	0	0	0	0	0
Fault exposure hours	0	0	0	0	0	0	0	0
Effective Reset hours	0	0	0	0	0	0	0	0
Required hours	2209.00	2160.00	2183.00	2208.00	2208.00	2184.00	2183.00	2208.00
<b>Indicator value</b>	<b>1.0%</b>	<b>1.0%</b>	<b>1.0%</b>	<b>1.1%</b>	<b>1.9%</b>	<b>2.1%</b>	<b>2.0%</b>	<b>1.9%</b>

Licensee Comments: none

### Safety System Unavailability, High Pressure Injection System (HPSI)



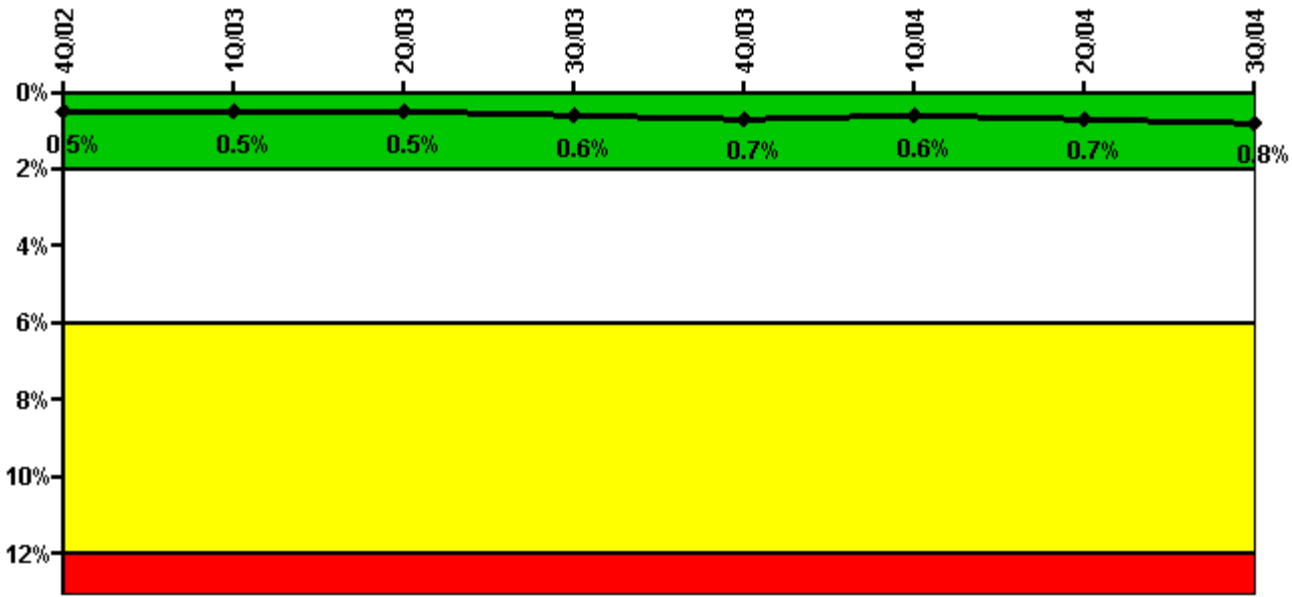
Thresholds: White > 1.5% Yellow > 5.0% Red > 10.0%

Notes

Safety System Unavailability, High Pressure Injection System (HPSI)	4Q/02	1Q/03	2Q/03	3Q/03	4Q/03	1Q/04	2Q/04	3Q/04
<b>Train 1</b>								
Planned unavailable hours	0	0.42	13.02	9.08	23.45	0	14.38	13.92
Unplanned unavailable hours	0	0	0	0	0	0	0	0
Fault exposure hours	0	0	0	0	0	0	0	0
Effective Reset hours	0	0	0	0	0	0	0	0
Required hours	445.52	1205.61	2183.00	2208.00	2208.00	2170.23	1614.63	2208.00
<b>Train 2</b>								
Planned unavailable hours	0	0	19.30	23.93	26.92	0.37	1.57	17.41
Unplanned unavailable hours	0	0	0	0	0	0	0	0
Fault exposure hours	0	0	0	0	0	0	0	0
Effective Reset hours	0	0	0	0	0	0	0	0
Required hours	445.52	1205.61	2183.00	2208.00	2208.00	2170.23	1614.63	2208.00
<b>Train 3</b>								
Planned unavailable hours	0	0.58	46.92	14.87	0.77	0	42.83	14.97
Unplanned unavailable hours	0	0	0	0	0	0	0	0
Fault exposure hours	0	0	0	0	0	0	0	0
Effective Reset hours	0	0	0	0	0	0	0	0
Required hours	445.52	1205.61	2183.00	2208.00	2208.00	2170.23	1614.63	2208.00
<b>Indicator value</b>	<b>1.3%</b>	<b>1.0%</b>	<b>1.1%</b>	<b>1.1%</b>	<b>1.1%</b>	<b>1.0%</b>	<b>1.0%</b>	<b>0.9%</b>

Licensee Comments: none

### Safety System Unavailability, Heat Removal System (AFW)



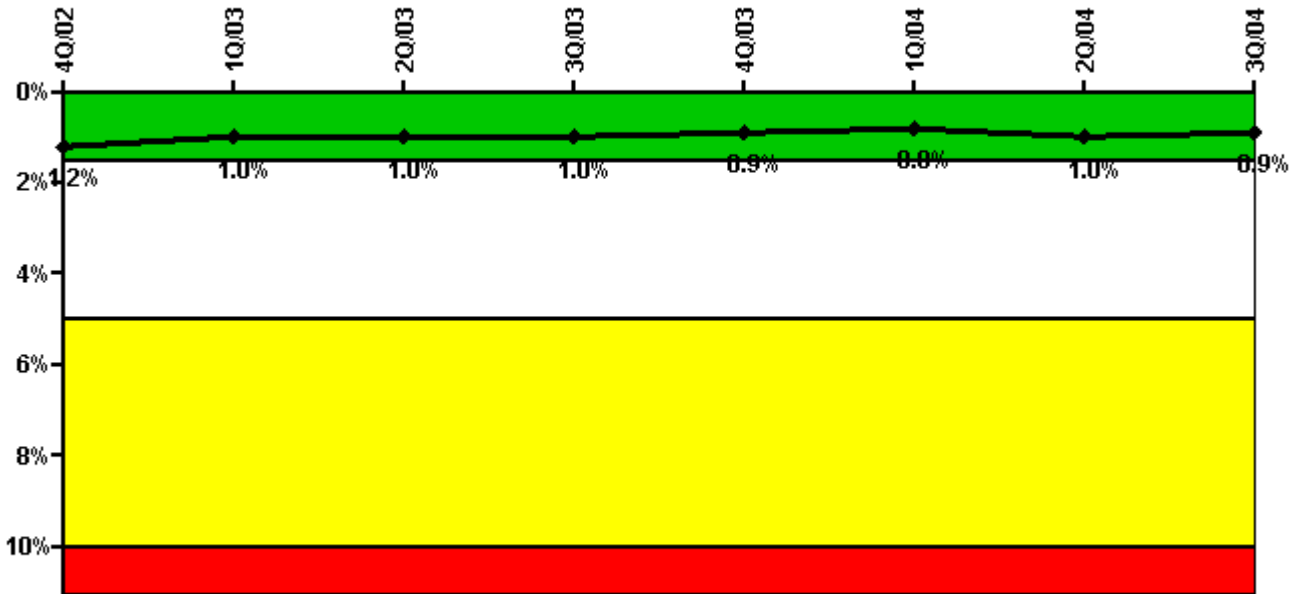
Thresholds: White > 2.0% Yellow > 6.0% Red > 12.0%

#### Notes

Safety System Unavailability, Heat Removal System (AFW)	4Q/02	1Q/03	2Q/03	3Q/03	4Q/03	1Q/04	2Q/04	3Q/04
<b>Train 1</b>								
Planned unavailable hours	0	0	1.83	0	22.55	0	39.20	21.23
Unplanned unavailable hours	0	0	0	0	0	0	0	0
Fault exposure hours	0	0	0	0	0	0	0	0
Effective Reset hours	0	0	0	0	0	0	0	0
Required hours	417.52	1183.57	2183.00	2208.00	2208.00	2167.62	1607.82	2208.00
<b>Train 2</b>								
Planned unavailable hours	0	0	11.52	45.45	89.30	0	21.73	12.76
Unplanned unavailable hours	0	0	0	0	0	0	0	0
Fault exposure hours	0	0	0	0	0	0	0	0
Effective Reset hours	0	0	0	0	0	0	0	0
Required hours	417.52	1183.57	2183.00	2208.00	2208.00	2167.62	1607.82	2208.00
<b>Train 3</b>								
Planned unavailable hours	0	11.55	22.68	33.67	0	0	43.15	0
Unplanned unavailable hours	0	0	0	0	0	0	0	0
Fault exposure hours	0	0	0	0	0	0	0	0
Effective Reset hours	0	0	0	0	0	0	0	0
Required hours	417.52	1183.57	2183.00	2208.00	2208.00	2167.62	1607.82	2208.00
<b>Train 4</b>								
Planned unavailable hours	0	0	19.75	27.75	13.40	0	6.63	33.10
Unplanned unavailable hours	9.52	0	0	0	0	0	10.77	0
Fault exposure hours	0	0	0	0	0	0	0	0
Effective Reset hours	0	0	0	0	0	0	0	0
Required hours	417.52	1183.57	2183.00	2208.00	2208.00	2167.62	1584.82	2208.00
<b>Indicator value</b>	<b>0.5%</b>	<b>0.5%</b>	<b>0.5%</b>	<b>0.6%</b>	<b>0.7%</b>	<b>0.6%</b>	<b>0.7%</b>	<b>0.8%</b>

Licensee Comments: none

### Safety System Unavailability, Residual Heat Removal System



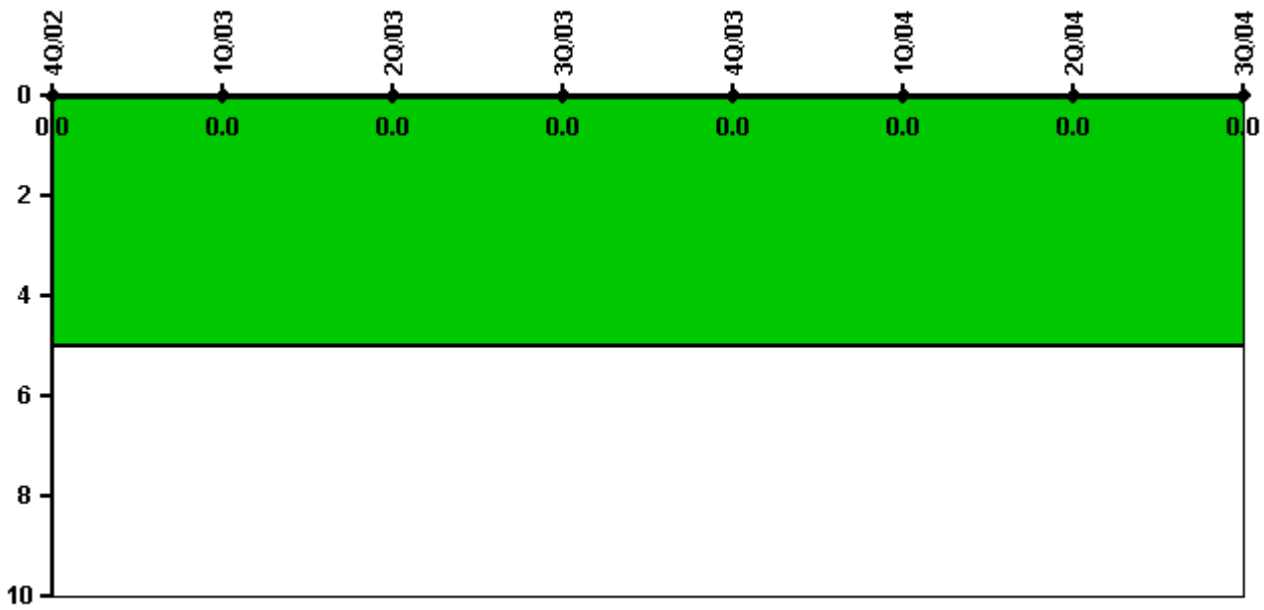
Thresholds: White > 1.5% Yellow > 5.0% Red > 10.0%

### Notes

Safety System Unavailability, Residual Heat Removal System	4Q/02	1Q/03	2Q/03	3Q/03	4Q/03	1Q/04	2Q/04	3Q/04
<b>Train 1</b>								
Planned unavailable hours	0	0.42	3.80	14.42	0	0	50.26	0.65
Unplanned unavailable hours	0	0	0	0	0	0	0	0
Fault exposure hours	0	0	0	0	0	0	0	0
Effective Reset hours	0	0	0	0	0	0	0	0
Required hours	1251.95	2160.00	2183.00	2208.00	2208.00	2184.00	2136.40	2208.00
<b>Train 2</b>								
Planned unavailable hours	0	0	19.30	0.65	26.92	0.37	1.57	12.72
Unplanned unavailable hours	0	0	0	0	0	0	0	0
Fault exposure hours	0	0	0	0	0	0	0	0
Effective Reset hours	0	0	0	0	0	0	0	0
Required hours	1251.95	2160.00	2183.00	2208.00	2208.00	2184.00	2136.40	2208.00
<b>Train 3</b>								
Planned unavailable hours	0	0.58	61.00	18.32	0	0	43.46	14.97
Unplanned unavailable hours	0	0	0	0	0	0	0	0
Fault exposure hours	0	0	0	0	0	0	0	0
Effective Reset hours	0	0	0	0	0	0	0	0
Required hours	1251.95	2160.00	2183.00	2208.00	2208.00	2184.00	2136.60	2208.00
<b>Indicator value</b>	<b>1.2%</b>	<b>1.0%</b>	<b>1.0%</b>	<b>1.0%</b>	<b>0.9%</b>	<b>0.8%</b>	<b>1.0%</b>	<b>0.9%</b>

Licensee Comments: none

### Safety System Functional Failures (PWR)



Thresholds: White > 5.0

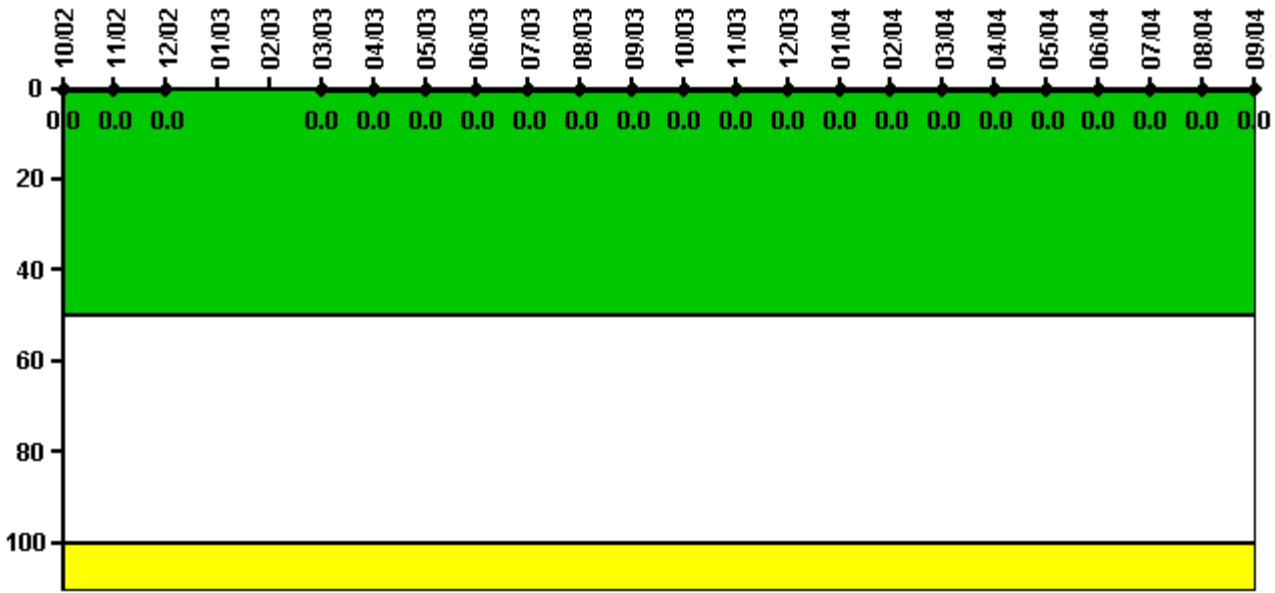
#### Notes

Safety System Functional Failures (PWR)	4Q/02	1Q/03	2Q/03	3Q/03	4Q/03	1Q/04	2Q/04	3Q/04
Safety System Functional Failures	0	0	0	0	0	0	0	0
Indicator value	0	0	0	0	0	0	0	0

Licensee Comments: none



### Reactor Coolant System Activity



Thresholds: White > 50.0 Yellow > 100.0

**Notes**

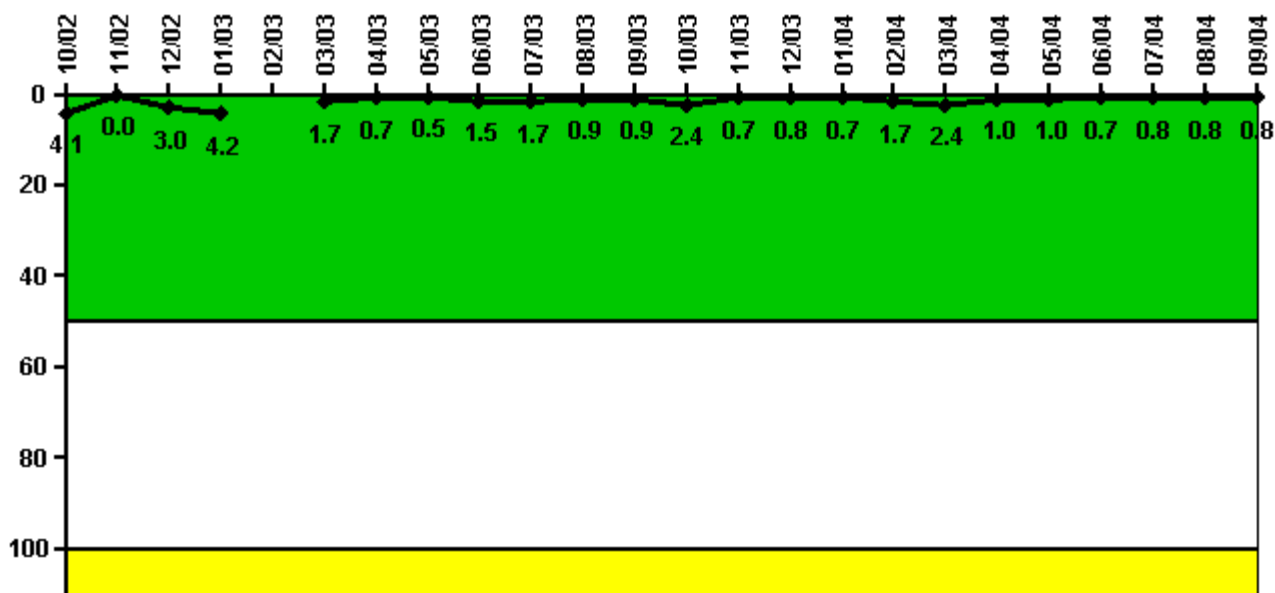
Reactor Coolant System Activity	10/02	11/02	12/02	1/03	2/03	3/03	4/03	5/03	6/03	7/03	8/03	9/03
Maximum activity	0	0	0.000057	N/A	N/A	0.000051	0.000072	0.000060	0.000072	0.000065	0.000072	0.000075
Technical specification limit	1.0	1.0	1.0	1.0	1.0	1.0	1.0	1.0	1.0	1.0	1.0	1.0
Indicator value	0	0	0	N/A	N/A	0	0	0	0	0	0	0

Reactor Coolant System Activity	10/03	11/03	12/03	1/04	2/04	3/04	4/04	5/04	6/04	7/04	8/04	9/04
Maximum activity	0.000074	0.000072	0.000076	0.000078	0.000082	0.000084	0	0.000091	0.000051	0.000049	0.000052	0.000054
Technical specification limit	1.0	1.0	1.0	1.0	1.0	1.0	1.0	1.0	1.0	1.0	1.0	1.0
Indicator value	0	0	0	0	0	0	0	0	0	0	0	0

Licensee Comments: none

### Reactor Coolant System Leakage



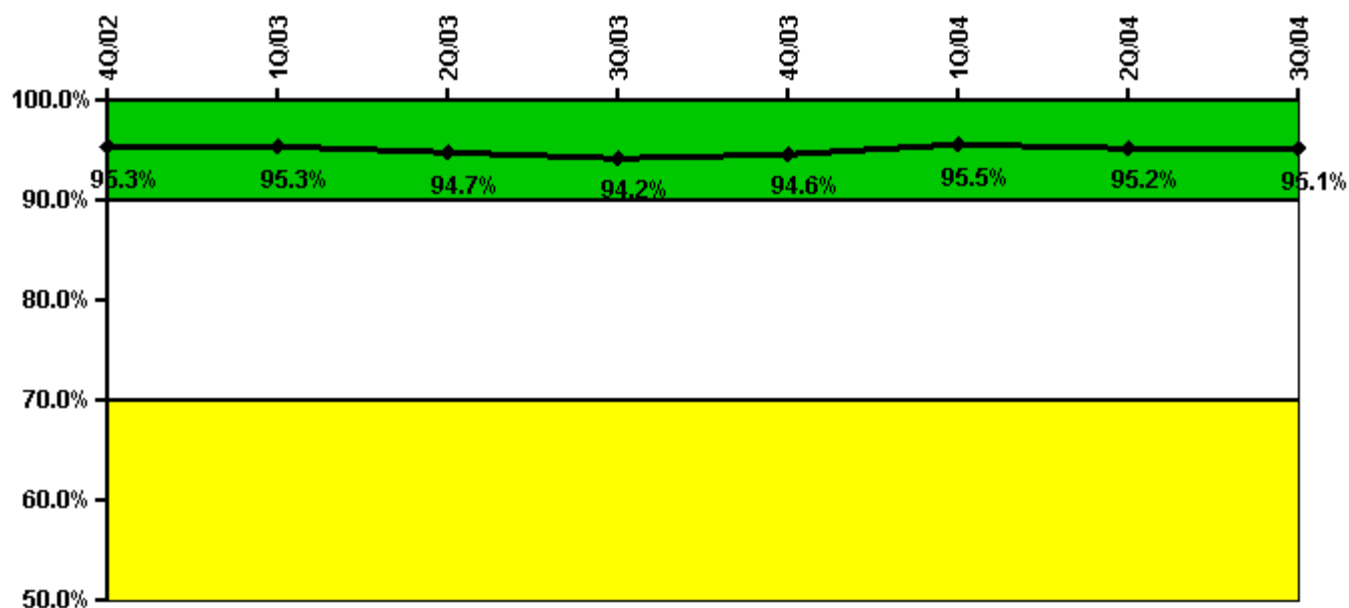
Thresholds: White > 50.0 Yellow > 100.0

#### Notes

Reactor Coolant System Leakage	10/02	11/02	12/02	1/03	2/03	3/03	4/03	5/03	6/03	7/03	8/03	9/03
Maximum leakage	0.410	0	0.302	0.417	N/A	0.168	0.069	0.053	0.145	0.168	0.091	0.087
Technical specification limit	10.0	10.0	10.0	10.0	10.0	10.0	10.0	10.0	10.0	10.0	10.0	10.0
Indicator value	4.1	0	3.0	4.2	N/A	1.7	0.7	0.5	1.5	1.7	0.9	0.9
Reactor Coolant System Leakage	10/03	11/03	12/03	1/04	2/04	3/04	4/04	5/04	6/04	7/04	8/04	9/04
Maximum leakage	0.238	0.068	0.084	0.074	0.173	0.236	0.097	0.097	0.074	0.081	0.083	0.082
Technical specification limit	10.0	10.0	10.0	10.0	10.0	10.0	10.0	10.0	10.0	10.0	10.0	10.0
Indicator value	2.4	0.7	0.8	0.7	1.7	2.4	1.0	1.0	0.7	0.8	0.8	0.8

Licensee Comments: none

### Drill/Exercise Performance



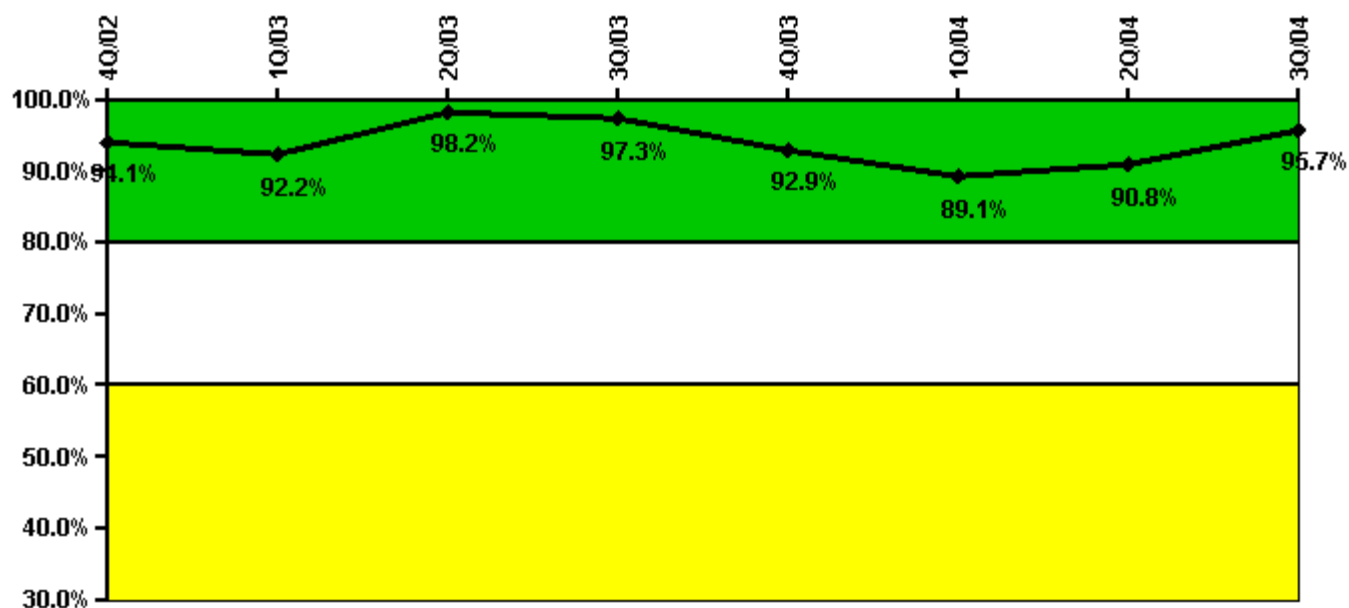
Thresholds: White < 90.0% Yellow < 70.0%

#### Notes

Drill/Exercise Performance	4Q/02	1Q/03	2Q/03	3Q/03	4Q/03	1Q/04	2Q/04	3Q/04
Successful opportunities	0	0	61.0	10.0	134.0	8.0	73.0	23.0
Total opportunities	0	0	67.0	12.0	138.0	8.0	76.0	24.0
Indicator value	95.3%	95.3%	94.7%	94.2%	94.6%	95.5%	95.2%	95.1%

Licensee Comments: none

### ERO Drill Participation



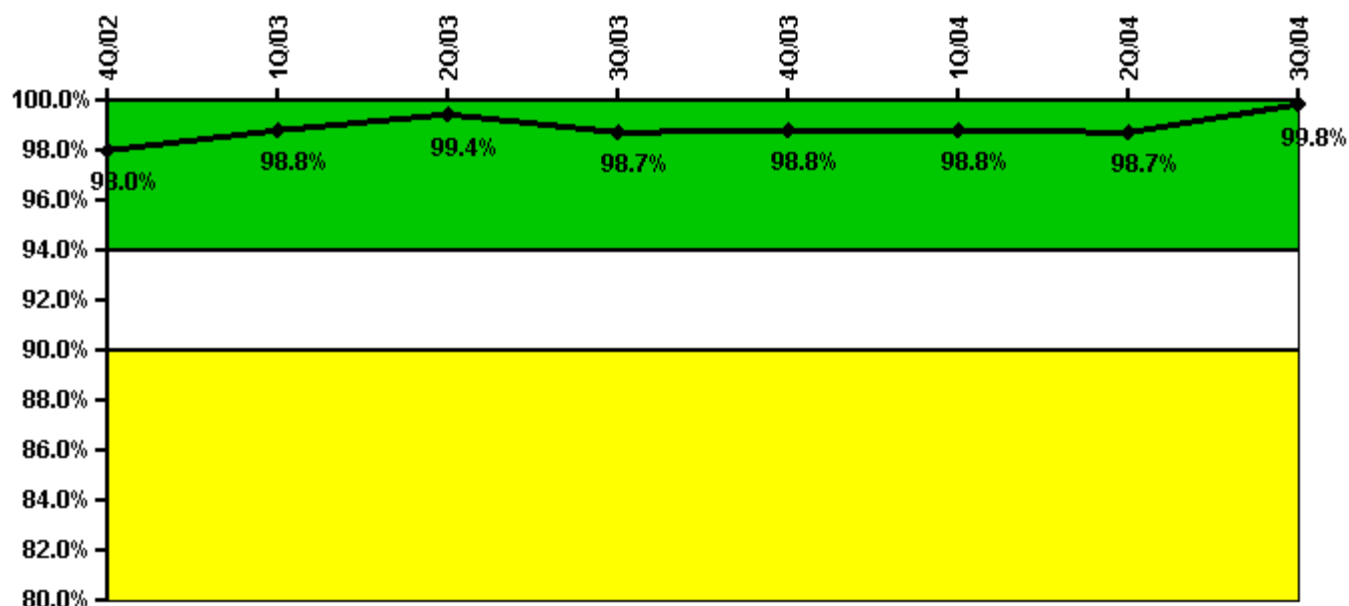
Thresholds: White < 80.0% Yellow < 60.0%

#### Notes

ERO Drill Participation	4Q/02	1Q/03	2Q/03	3Q/03	4Q/03	1Q/04	2Q/04	3Q/04
Participating Key personnel	111.0	107.0	111.0	110.0	104.0	106.0	108.0	110.0
Total Key personnel	118.0	116.0	113.0	113.0	112.0	119.0	119.0	115.0
Indicator value	94.1%	92.2%	98.2%	97.3%	92.9%	89.1%	90.8%	95.7%

Licensee Comments: none

### Alert & Notification System



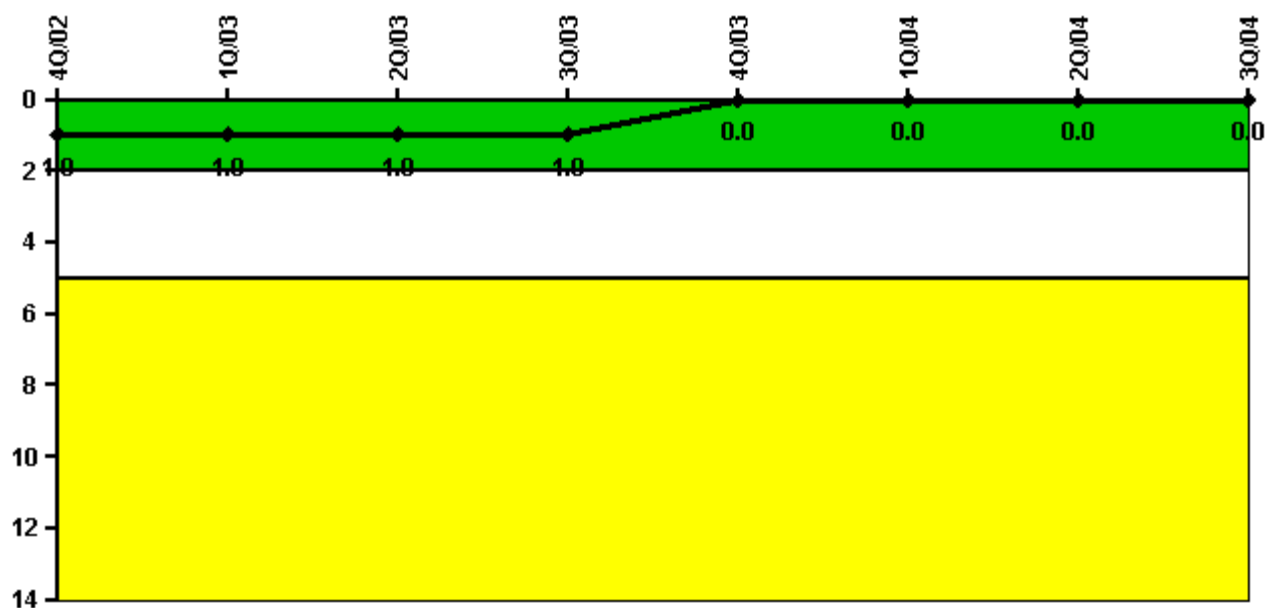
Thresholds: White < 94.0% Yellow < 90.0%

#### Notes

Alert & Notification System	4Q/02	1Q/03	2Q/03	3Q/03	4Q/03	1Q/04	2Q/04	3Q/04
Successful siren-tests	253	224	192	215	223	192	223	192
Total sirens-tests	256	224	192	224	224	192	224	192
Indicator value	98.0%	98.8%	99.4%	98.7%	98.8%	98.8%	98.7%	99.8%

Licensee Comments: none

### Occupational Exposure Control Effectiveness



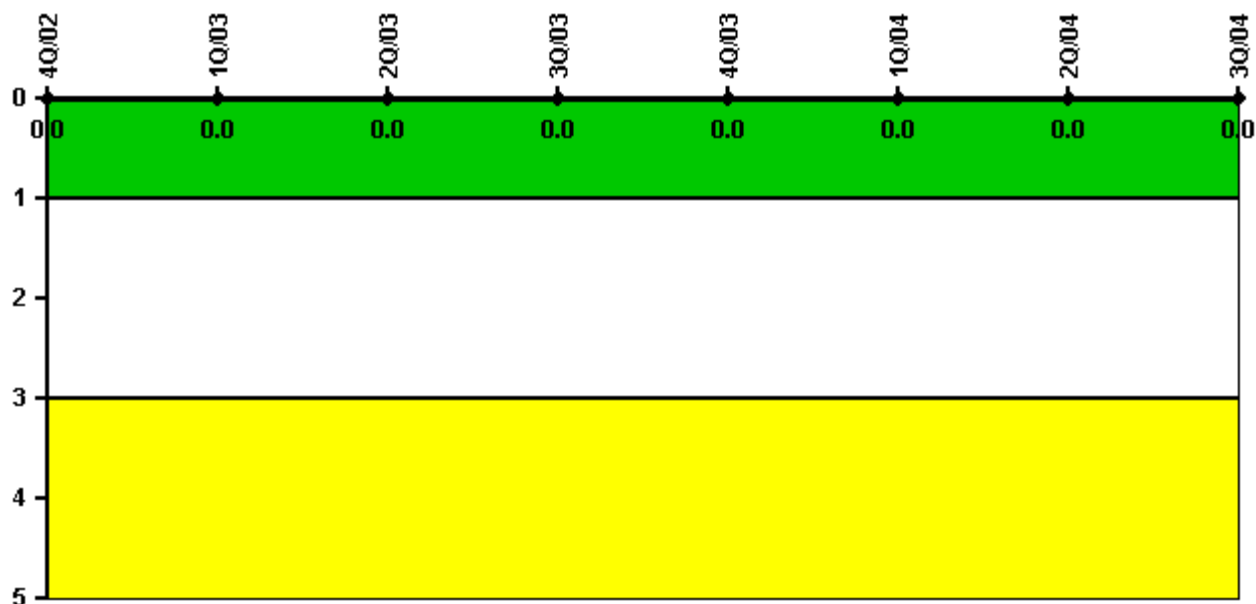
Thresholds: White > 2.0 Yellow > 5.0

#### Notes

Occupational Exposure Control Effectiveness	4Q/02	1Q/03	2Q/03	3Q/03	4Q/03	1Q/04	2Q/04	3Q/04
High radiation area occurrences	1	0	0	0	0	0	0	0
Very high radiation area occurrences	0	0	0	0	0	0	0	0
Unintended exposure occurrences	0	0	0	0	0	0	0	0
<b>Indicator value</b>	<b>1</b>	<b>1</b>	<b>1</b>	<b>1</b>	<b>0</b>	<b>0</b>	<b>0</b>	<b>0</b>

Licensee Comments: none

### RETS/ODCM Radiological Effluent



Thresholds: White > 1.0 Yellow > 3.0

#### Notes

RETS/ODCM Radiological Effluent	4Q/02	1Q/03	2Q/03	3Q/03	4Q/03	1Q/04	2Q/04	3Q/04
RETS/ODCM occurrences	0	0	0	0	0	0	0	0
Indicator value	0	0	0	0	0	0	0	0

Licensee Comments: none

[Physical Protection](#) information not publicly available.