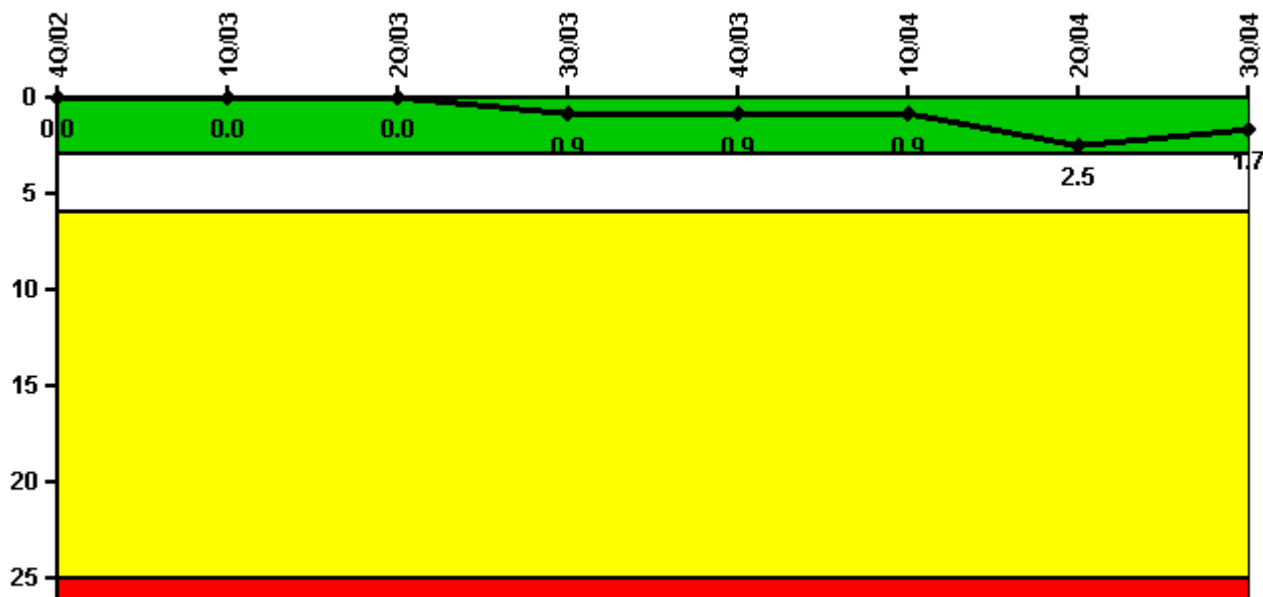


Palo Verde 3

3Q/2004 Performance Indicators

Licensee's General Comments: none

Unplanned Scrams per 7000 Critical Hrs



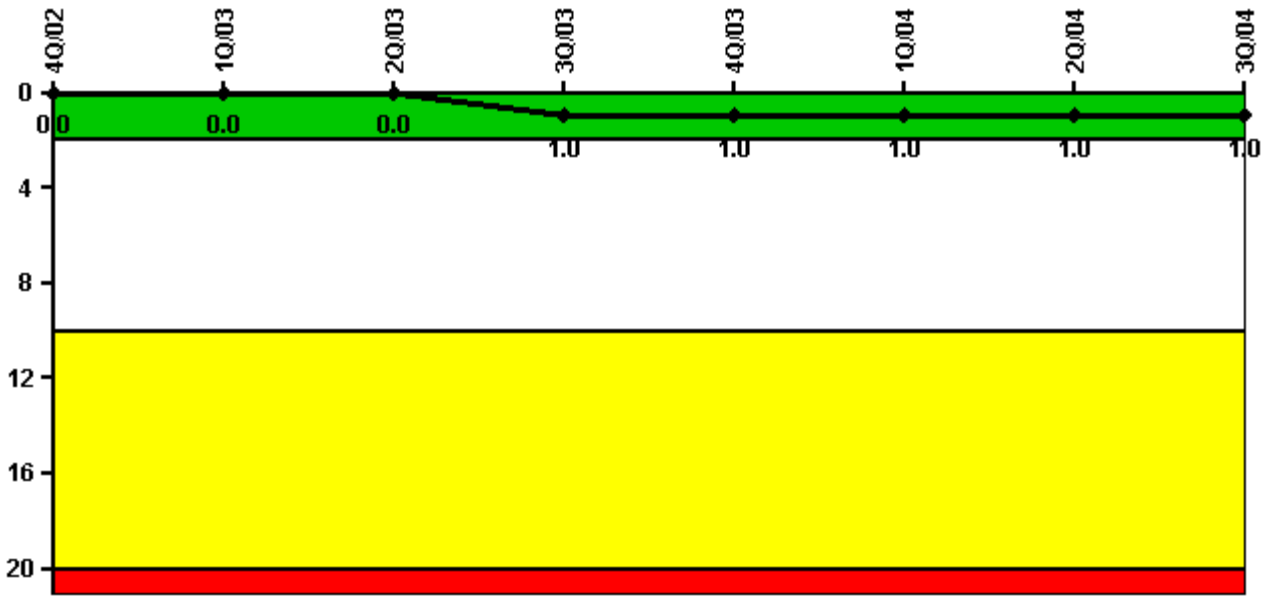
Thresholds: White > 3.0 Yellow > 6.0 Red > 25.0

Notes

Unplanned Scrams per 7000 Critical Hrs	4Q/02	1Q/03	2Q/03	3Q/03	4Q/03	1Q/04	2Q/04	3Q/04
Unplanned scrams	0	0	0	1.0	0	0	2.0	0
Critical hours	2208.0	2088.0	1437.9	2045.7	2208.0	1987.0	1997.0	2208.0
Indicator value	0	0	0	0.9	0.9	0.9	2.5	1.7

Licensee Comments: none

Scrams with Loss of Normal Heat Removal



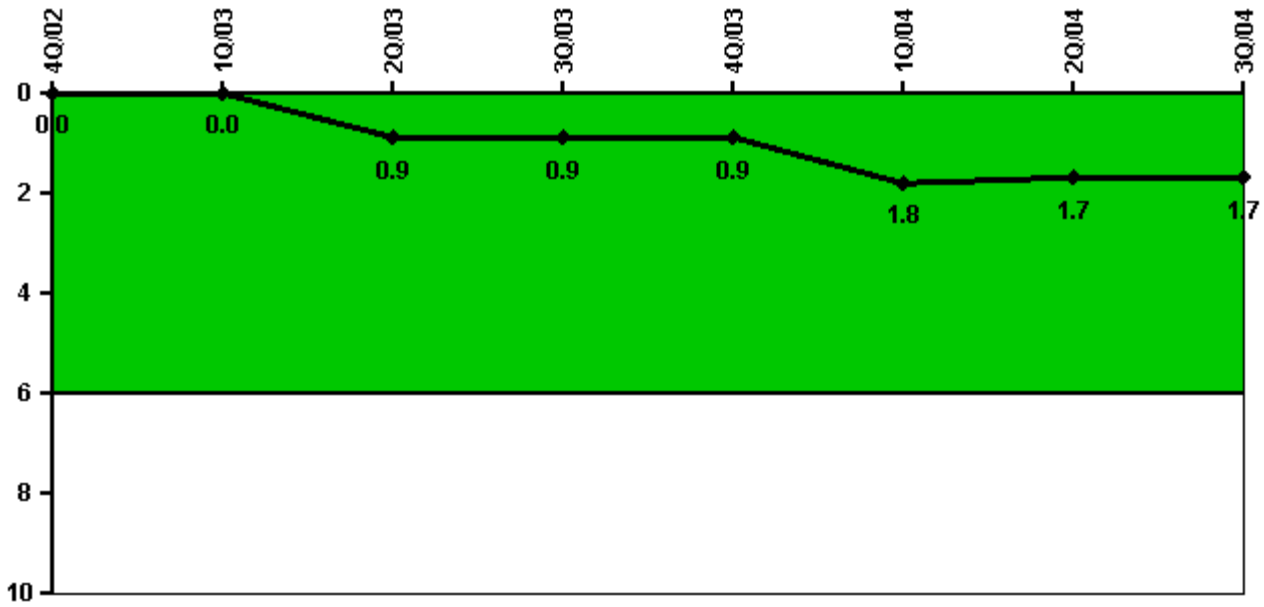
Thresholds: White > 2.0 Yellow > 10.0 Red > 20.0

Notes

Scrams with Loss of Normal Heat Removal	4Q/02	1Q/03	2Q/03	3Q/03	4Q/03	1Q/04	2Q/04	3Q/04
Scrams	0	0	0	1.0	0	0	0	0
Indicator value	0	0	0	1.0	1.0	1.0	1.0	1.0

Licensee Comments: none

Unplanned Power Changes per 7000 Critical Hrs



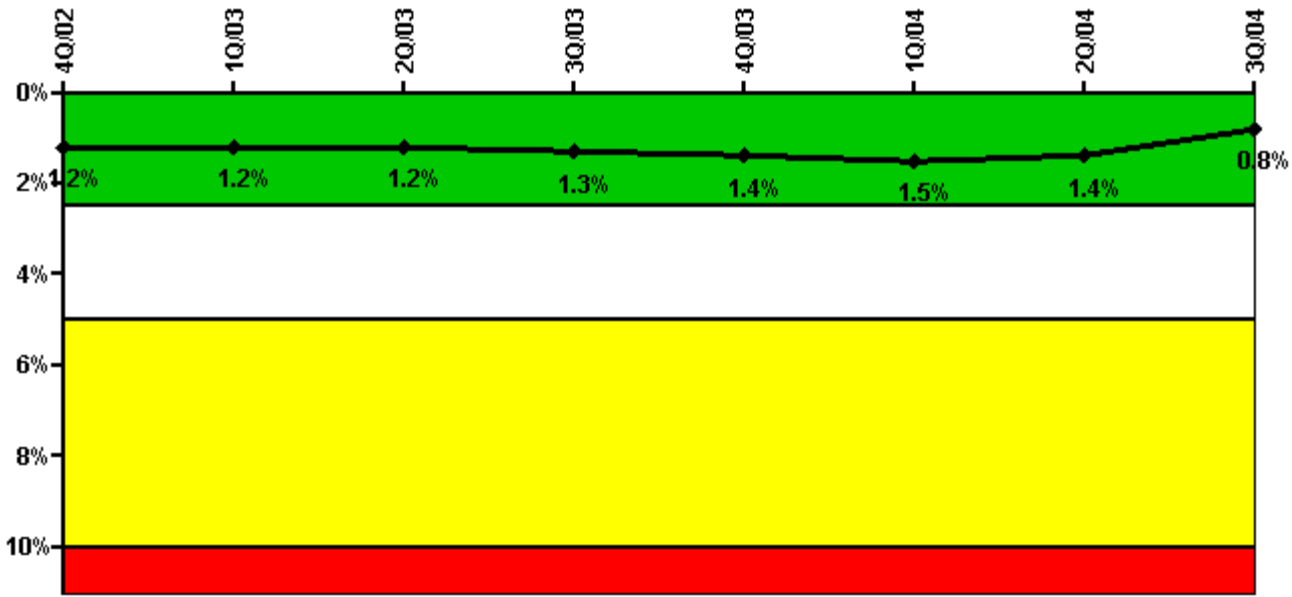
Thresholds: White > 6.0

Notes

Unplanned Power Changes per 7000 Critical Hrs	4Q/02	1Q/03	2Q/03	3Q/03	4Q/03	1Q/04	2Q/04	3Q/04
Unplanned power changes	0	0	1.0	0	0	1.0	1.0	0
Critical hours	2208.0	2088.0	1437.9	2045.7	2208.0	1987.0	1997.0	2208.0
Indicator value	0	0	0.9	0.9	0.9	1.8	1.7	1.7

Licensee Comments: none

Safety System Unavailability, Emergency AC Power



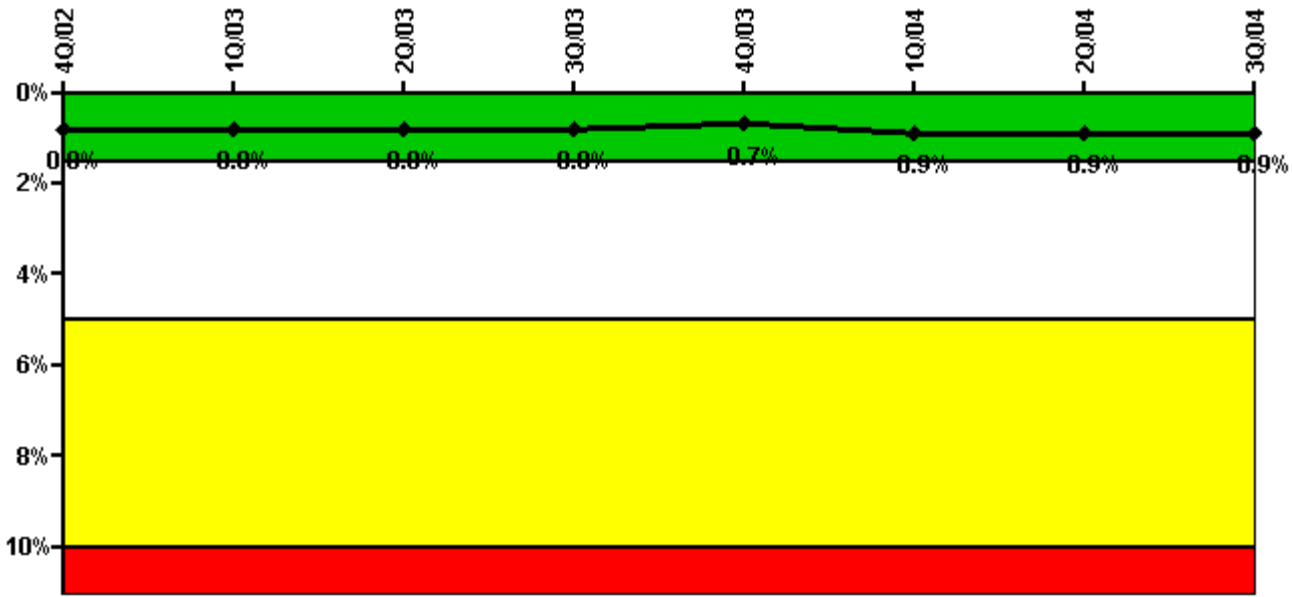
Thresholds: White > 2.5% Yellow > 5.0% Red > 10.0%

Notes

Safety System Unavailability, Emergency AC Power	4Q/02	1Q/03	2Q/03	3Q/03	4Q/03	1Q/04	2Q/04	3Q/04
Train 1								
Planned unavailable hours	0.12	20.57	0.02	50.77	26.66	29.92	21.44	18.60
Unplanned unavailable hours	0	0	0	0	7.62	0	18.70	0
Fault exposure hours	0	0	0	0	0	0	0	0
Effective Reset hours	0	0	0	0	0	0	0	0
Required hours	2208.00	2160.00	2184.00	2208.00	2208.00	2184.00	2184.00	2208.00
Train 2								
Planned unavailable hours	25.70	0.07	0.02	21.27	0.06	38.81	0.06	21.09
Unplanned unavailable hours	0	14.42	0	0.08	25.68	0	0	0
Fault exposure hours	0	0	0	0	0	0	0	0
Effective Reset hours	0	0	0	0	0	0	0	0
Required hours	2208.00	2160.00	2184.00	2208.00	2208.00	2184.00	2184.00	2208.00
Indicator value	1.2%	1.2%	1.2%	1.3%	1.4%	1.5%	1.4%	0.8%

Licensee Comments: none

Safety System Unavailability, High Pressure Injection System (HPSI)



Thresholds: White > 1.5% Yellow > 5.0% Red > 10.0%

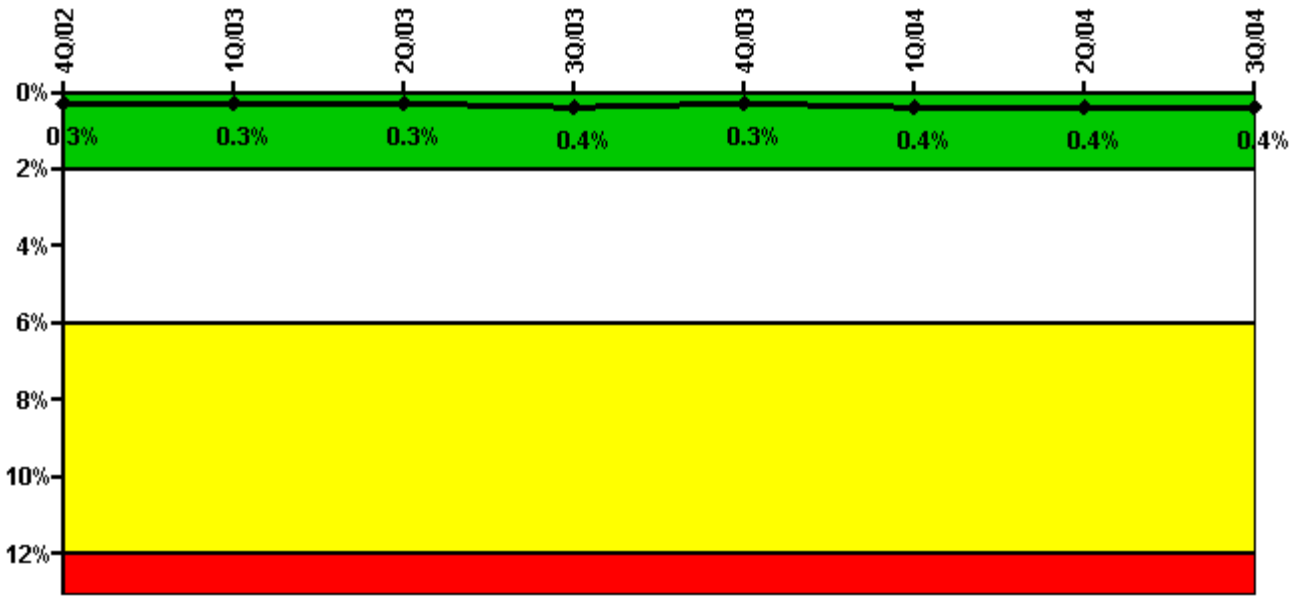
Notes

Safety System Unavailability, High Pressure Injection System (HPSI)	4Q/02	1Q/03	2Q/03	3Q/03	4Q/03	1Q/04	2Q/04	3Q/04
Train 1								
Planned unavailable hours	5.58	20.88	0.65	16.43	11.95	29.09	8.77	35.44
Unplanned unavailable hours	0	0	0	0	0	24.10	0	0
Fault exposure hours	0	0	0	0	0	0	0	0
Effective Reset hours	0	0	0	0	0	0	0	0
Required hours	2208.00	2088.02	1437.85	2045.69	2208.00	1987.03	1997.00	2208.00
Train 2								
Planned unavailable hours	12.78	29.78	7.28	20.62	3.03	66.10	7.37	32.12
Unplanned unavailable hours	0	0	0	0.08	0	0	0	0
Fault exposure hours	0	0	0	0	0	0	0	0
Effective Reset hours	0	0	0	0	0	0	0	0
Required hours	2208.00	2088.02	1437.85	2045.69	2208.00	1987.03	1997.00	2208.00
Indicator value	0.8%	0.8%	0.8%	0.8%	0.7%	0.9%	0.9%	0.9%

Licensee Comments:

3Q/04: Engineering evaluation of HPSI unavailability due to air in containment recirculation sump piping is pending.

Safety System Unavailability, Heat Removal System (AFW)



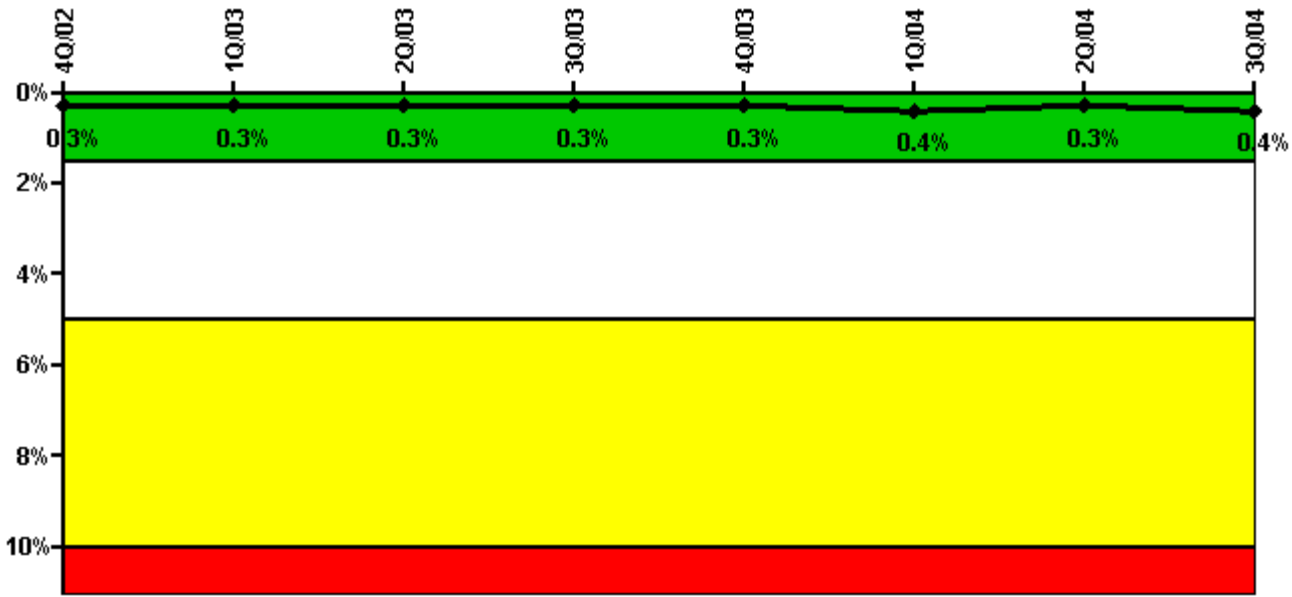
Thresholds: White > 2.0% Yellow > 6.0% Red > 12.0%

Notes

Safety System Unavailability, Heat Removal System (AFW)	4Q/02	1Q/03	2Q/03	3Q/03	4Q/03	1Q/04	2Q/04	3Q/04
Train 1								
Planned unavailable hours	0.71	10.78	1.22	16.06	10.25	32.03	32.95	0.98
Unplanned unavailable hours	0	2.52	17.52	0	0	0	0	25.13
Fault exposure hours	0	0	0	0	0	0	0	0
Effective Reset hours	0	0	0	0	0	0	0	0
Required hours	2208.00	2088.02	1437.85	2045.69	2208.00	1987.03	1997.00	2208.00
Train 2								
Planned unavailable hours	12.43	12.37	0.50	12.82	2.38	38.36	0.50	10.70
Unplanned unavailable hours	0	0	0	0.08	0	0	0	0
Fault exposure hours	0	0	0	0	0	0	0	0
Effective Reset hours	0	0	0	0	0	0	0	0
Required hours	2208.00	2088.02	1437.85	2045.69	2208.00	1987.03	1997.00	2208.00
Train 3								
Planned unavailable hours	0.58	0	0	0.52	0.75	0.77	0.57	0.32
Unplanned unavailable hours	0	0	0	0	0	0	0	0
Fault exposure hours	0	0	0	0	0	0	0	0
Effective Reset hours	0	0	0	0	0	0	0	0
Required hours	2208.00	2088.02	1437.85	2045.69	2208.00	1987.03	1997.00	2208.00
Indicator value	0.3%	0.3%	0.3%	0.4%	0.3%	0.4%	0.4%	0.4%

Licensee Comments: none

Safety System Unavailability, Residual Heat Removal System



Thresholds: White > 1.5% Yellow > 5.0% Red > 10.0%

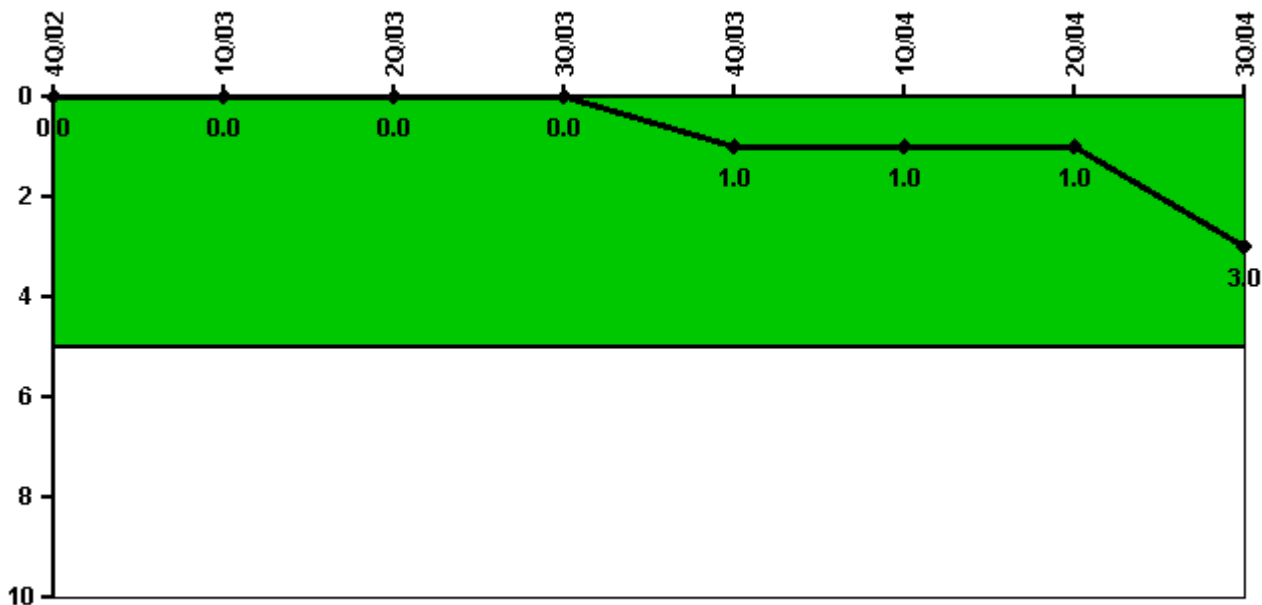
Notes

Safety System Unavailability, Residual Heat Removal System	4Q/02	1Q/03	2Q/03	3Q/03	4Q/03	1Q/04	2Q/04	3Q/04
Train 1								
Planned unavailable hours	3.60	16.81	7.81	10.38	14.75	33.15	21.29	36.41
Unplanned unavailable hours	0	0	0	0	0	0	0	0
Fault exposure hours	0	0	0	0	0	0	0	0
Effective Reset hours	0	0	0	0	0	0	0	0
Required hours	2208.00	2097.00	1531.30	2113.77	2208.00	2047.18	2184.00	2208.00
Train 2								
Planned unavailable hours	19.78	14.89	4.70	17.87	3.65	45.24	1.45	31.53
Unplanned unavailable hours	0	0	0	0.08	0	0	0	0
Fault exposure hours	0	0	0	0	0	0	0	0
Effective Reset hours	0	0	0	0	0	0	0	0
Required hours	2208.00	2097.00	1531.30	2113.77	2208.00	2047.18	2184.00	2208.00
Train 3								
Planned unavailable hours	0	0	0	0	0	0	0	0
Unplanned unavailable hours	0	0	0	0	0	0	0	0
Fault exposure hours	0	0	0	0	0	0	0	0
Effective Reset hours	0	0	0	0	0	0	0	0
Required hours	0	59.28	279.42	0	0	109.90	0	0
Train 4								
Planned unavailable hours	0	0	0	0	0	0	0	0
Unplanned unavailable hours	0	0	0	0	0	0	0	0
Fault exposure hours	0	0	0	0	0	0	0	0
Effective Reset hours	0	0	0	0	0	0	0	0
Required hours	0	39.25	237.82	89.92	0	122.28	0	0
Indicator value	0.3%	0.3%	0.3%	0.3%	0.3%	0.4%	0.3%	0.4%

Licensee Comments:

3Q/04: Engineering evaluation of RHR unavailability due to air in containment recirculation sump piping is pending.

Safety System Functional Failures (PWR)



Thresholds: White > 5.0

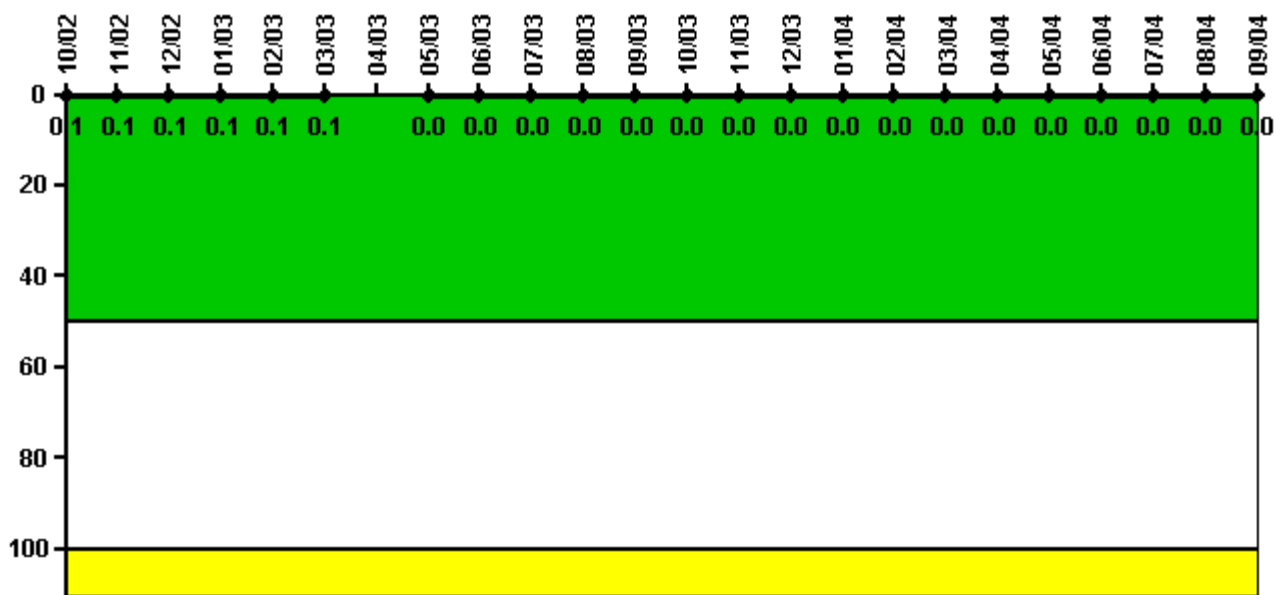
Notes

Safety System Functional Failures (PWR)	4Q/02	1Q/03	2Q/03	3Q/03	4Q/03	1Q/04	2Q/04	3Q/04
Safety System Functional Failures	0	0	0	0	1	0	0	2
Indicator value	0	0	0	0	1	1	1	3

Licensee Comments:

3Q/04: SSFF reported via LER 528/2004-006 on 8/13/2004. SSFF reported via LER 528/2004-009 on 9/28/2004.

Reactor Coolant System Activity



Thresholds: White > 50.0 Yellow > 100.0

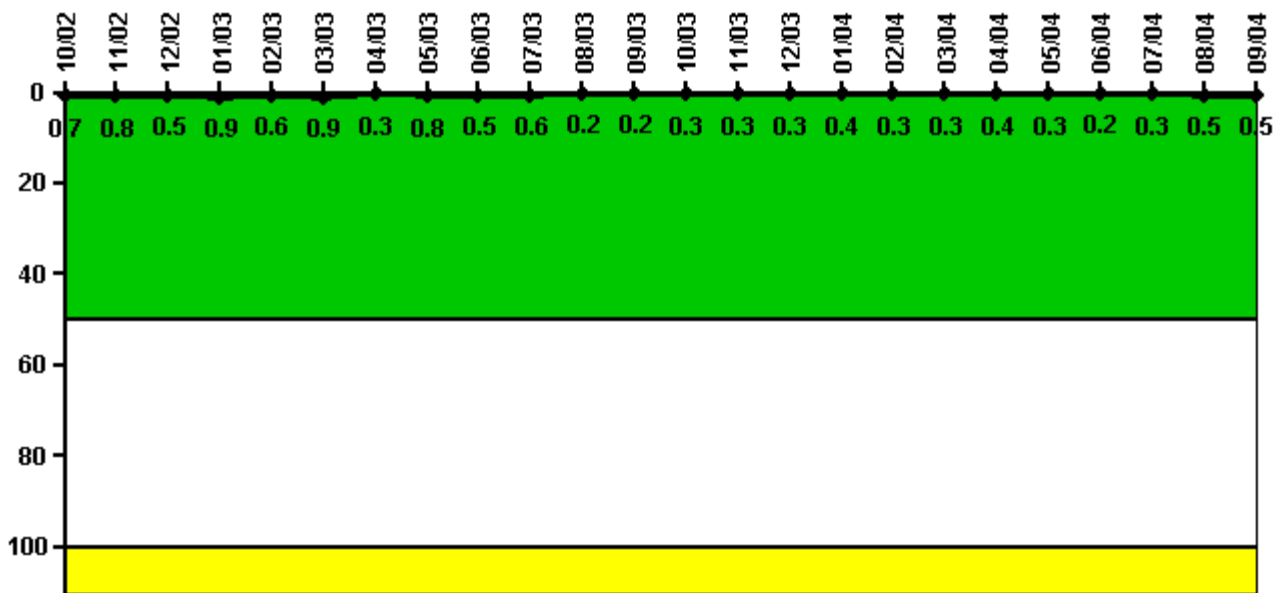
Notes

Reactor Coolant System Activity	10/02	11/02	12/02	1/03	2/03	3/03	4/03	5/03	6/03	7/03	8/03	9/03
Maximum activity	0.001000	0.001000	0.001000	0.001000	0.001000	0.001000	N/A	0	0	0	0	0
Technical specification limit	1.0	1.0	1.0	1.0	1.0	1.0	N/A	1.0	1.0	1.0	1.0	1.0
Indicator value	0.1	0.1	0.1	0.1	0.1	0.1	N/A	0	0	0	0	0

Reactor Coolant System Activity	10/03	11/03	12/03	1/04	2/04	3/04	4/04	5/04	6/04	7/04	8/04	9/04
Maximum activity	0.000205	0.000205	0.000433	0.000204	0.000212	0.000217	0.000230	0.000230	0.000232	0.000244	0.000245	0.000260
Technical specification limit	1.0	1.0	1.0	1.0	1.0	1.0	1.0	1.0	1.0	1.0	1.0	1.0
Indicator value	0	0	0	0	0	0	0	0	0	0	0	0

Licensee Comments: none

Reactor Coolant System Leakage



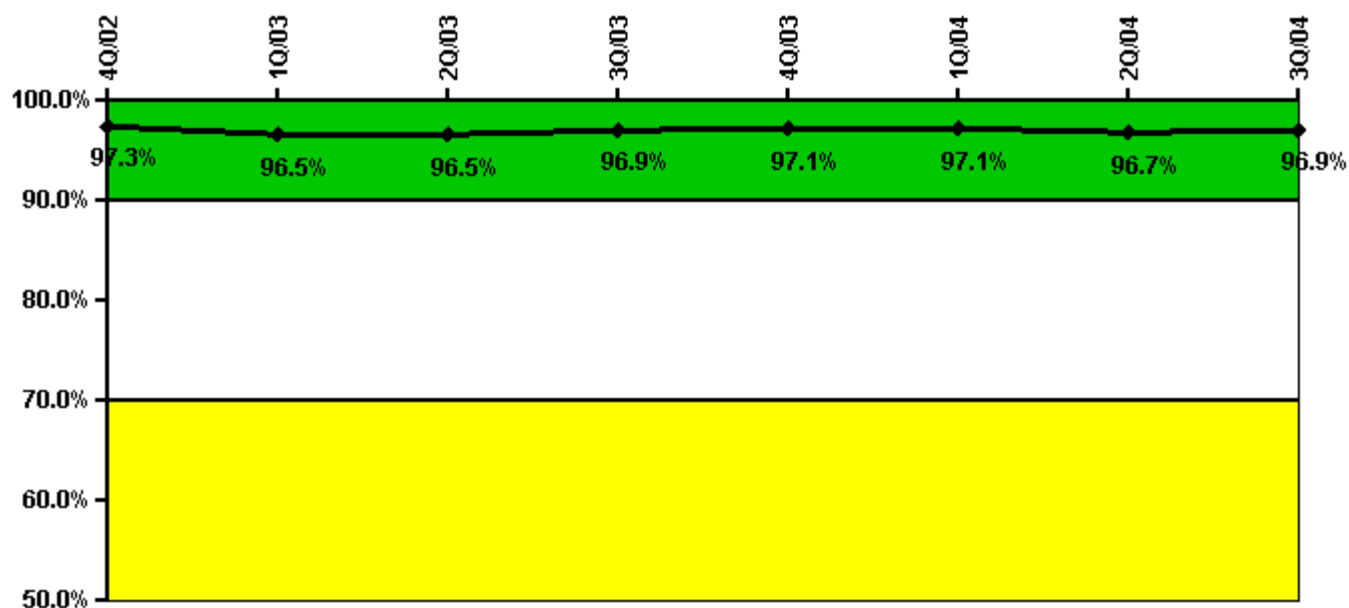
Thresholds: White > 50.0 Yellow > 100.0

Notes

Reactor Coolant System Leakage	10/02	11/02	12/02	1/03	2/03	3/03	4/03	5/03	6/03	7/03	8/03	9/03
Maximum leakage	0.068	0.079	0.050	0.086	0.058	0.091	0.027	0.082	0.054	0.058	0.016	0.017
Technical specification limit	10.0	10.0	10.0	10.0	10.0	10.0	10.0	10.0	10.0	10.0	10.0	10.0
Indicator value	0.7	0.8	0.5	0.9	0.6	0.9	0.3	0.8	0.5	0.6	0.2	0.2
Reactor Coolant System Leakage	10/03	11/03	12/03	1/04	2/04	3/04	4/04	5/04	6/04	7/04	8/04	9/04
Maximum leakage	0.030	0.025	0.032	0.039	0.029	0.032	0.040	0.033	0.023	0.025	0.051	0.053
Technical specification limit	10.0	10.0	10.0	10.0	10.0	10.0	10.0	10.0	10.0	10.0	10.0	10.0
Indicator value	0.3	0.3	0.3	0.4	0.3	0.3	0.4	0.3	0.2	0.3	0.5	0.5

Licensee Comments: none

Drill/Exercise Performance



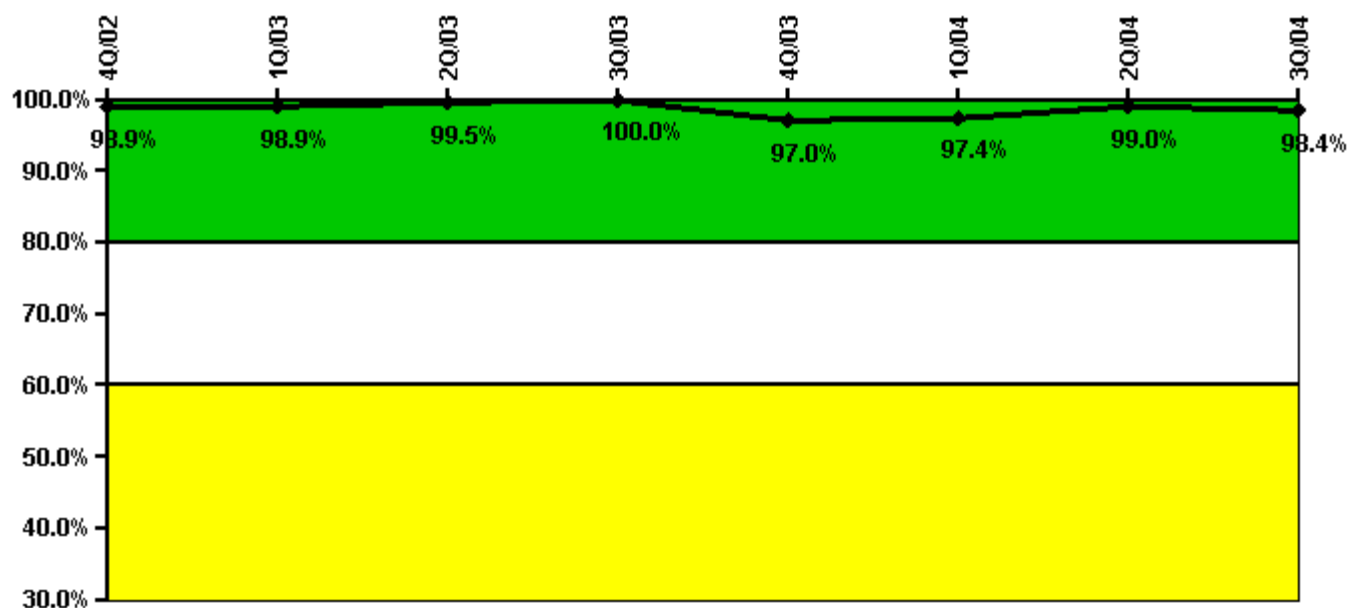
Thresholds: White < 90.0% Yellow < 70.0%

Notes

Drill/Exercise Performance	4Q/02	1Q/03	2Q/03	3Q/03	4Q/03	1Q/04	2Q/04	3Q/04
Successful opportunities	137.0	14.0	8.0	280.0	38.0	19.0	14.0	111.0
Total opportunities	141.0	18.0	8.0	287.0	38.0	20.0	17.0	112.0
Indicator value	97.3%	96.5%	96.5%	96.9%	97.1%	97.1%	96.7%	96.9%

Licensee Comments: none

ERO Drill Participation



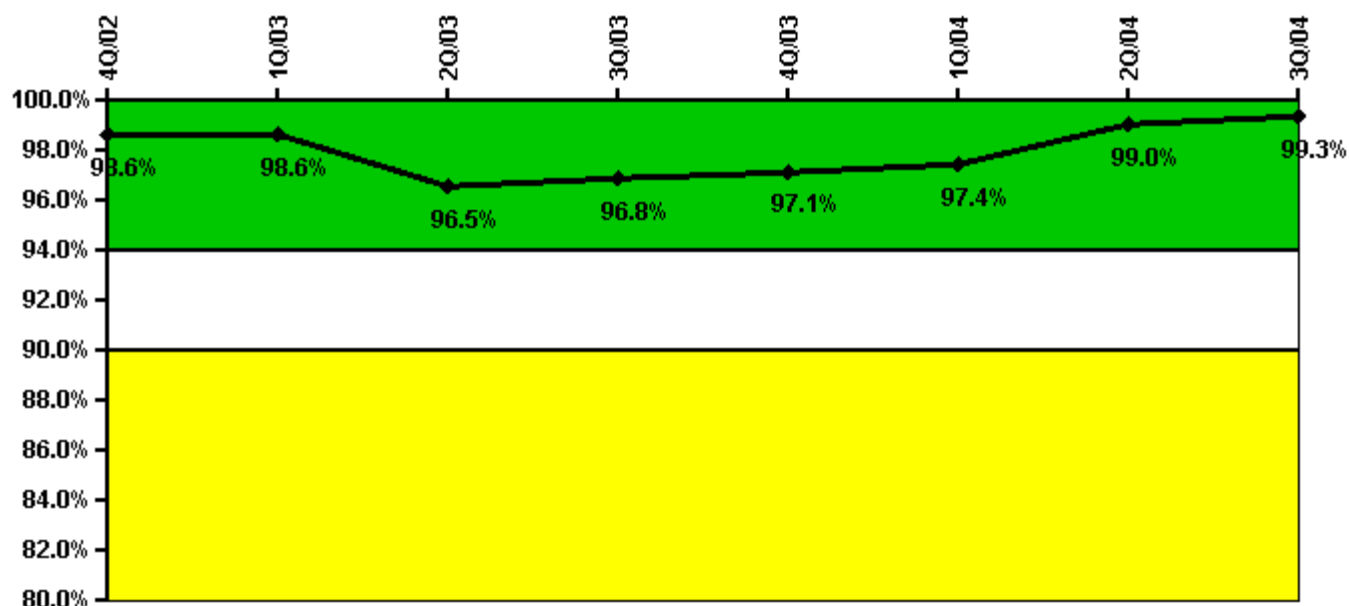
Thresholds: White < 80.0% Yellow < 60.0%

Notes

ERO Drill Participation	4Q/02	1Q/03	2Q/03	3Q/03	4Q/03	1Q/04	2Q/04	3Q/04
Participating Key personnel	183.0	181.0	181.0	182.0	194.0	189.0	193.0	188.0
Total Key personnel	185.0	183.0	182.0	182.0	200.0	194.0	195.0	191.0
Indicator value	98.9%	98.9%	99.5%	100.0%	97.0%	97.4%	99.0%	98.4%

Licensee Comments: none

Alert & Notification System



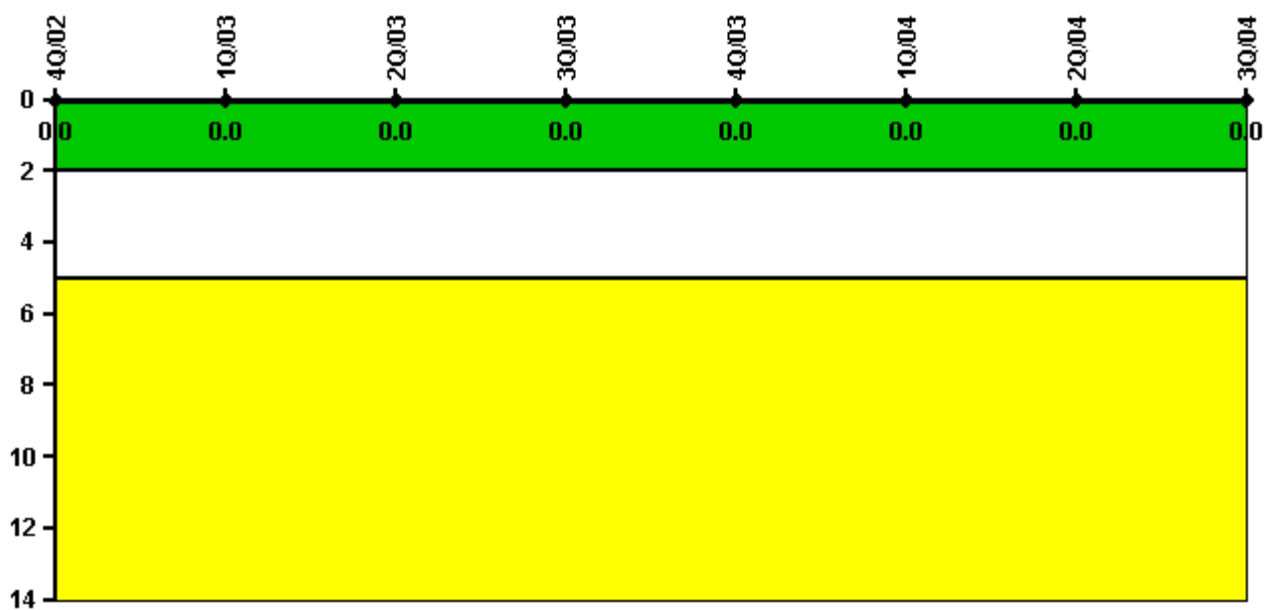
Thresholds: White < 94.0% Yellow < 90.0%

Notes

Alert & Notification System	4Q/02	1Q/03	2Q/03	3Q/03	4Q/03	1Q/04	2Q/04	3Q/04
Successful siren-tests	459	349	503	700	867	712	798	792
Total sirens-tests	468	349	546	714	882	714	798	798
Indicator value	98.6%	98.6%	96.5%	96.8%	97.1%	97.4%	99.0%	99.3%

Licensee Comments: none

Occupational Exposure Control Effectiveness



Thresholds: White > 2.0 Yellow > 5.0

Notes

Occupational Exposure Control Effectiveness	4Q/02	1Q/03	2Q/03	3Q/03	4Q/03	1Q/04	2Q/04	3Q/04
High radiation area occurrences	0	0	0	0	0	0	0	0
Very high radiation area occurrences	0	0	0	0	0	0	0	0
Unintended exposure occurrences	0	0	0	0	0	0	0	0
Indicator value	0	0	0	0	0	0	0	0

Licensee Comments: none

RETS/ODCM Radiological Effluent



Thresholds: White > 1.0 Yellow > 3.0

Notes

RETS/ODCM Radiological Effluent	4Q/02	1Q/03	2Q/03	3Q/03	4Q/03	1Q/04	2Q/04	3Q/04
RETS/ODCM occurrences	0	0	0	0	0	0	0	0
Indicator value	0	0	0	0	0	0	0	0

Licensee Comments: none

[Physical Protection](#) information not publicly available.