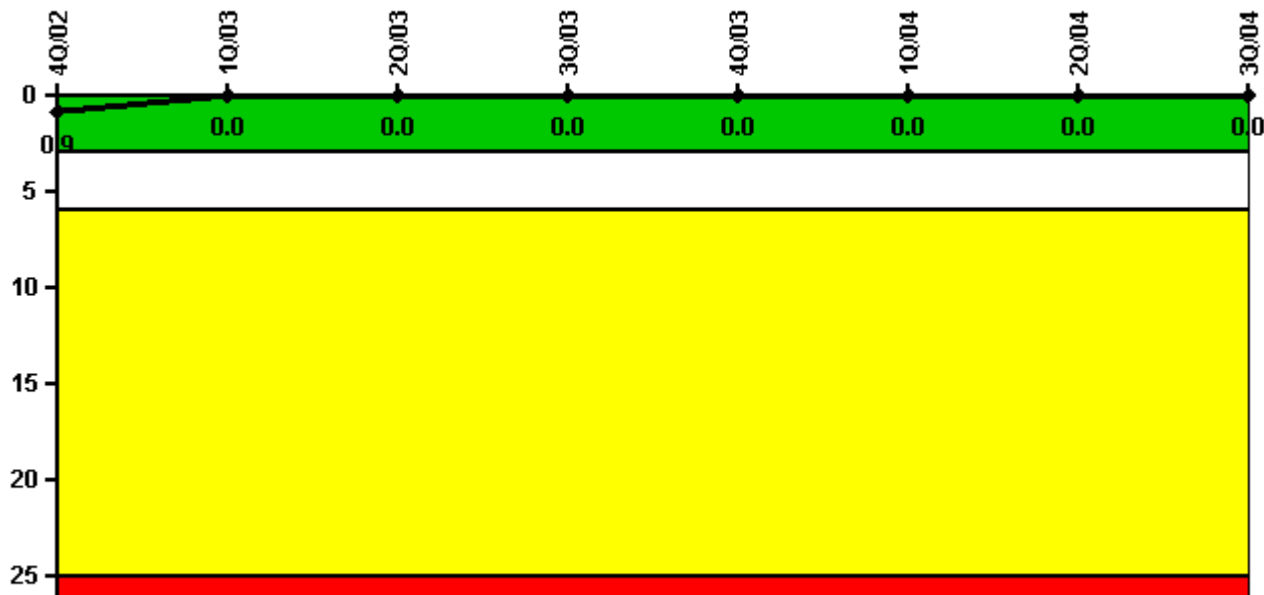


# McGuire 1

## 3Q/2004 Performance Indicators

Licensee's General Comments: McGuire Unit 1 - 3rd Quarter 2004 PI Data

### Unplanned Scrams per 7000 Critical Hrs



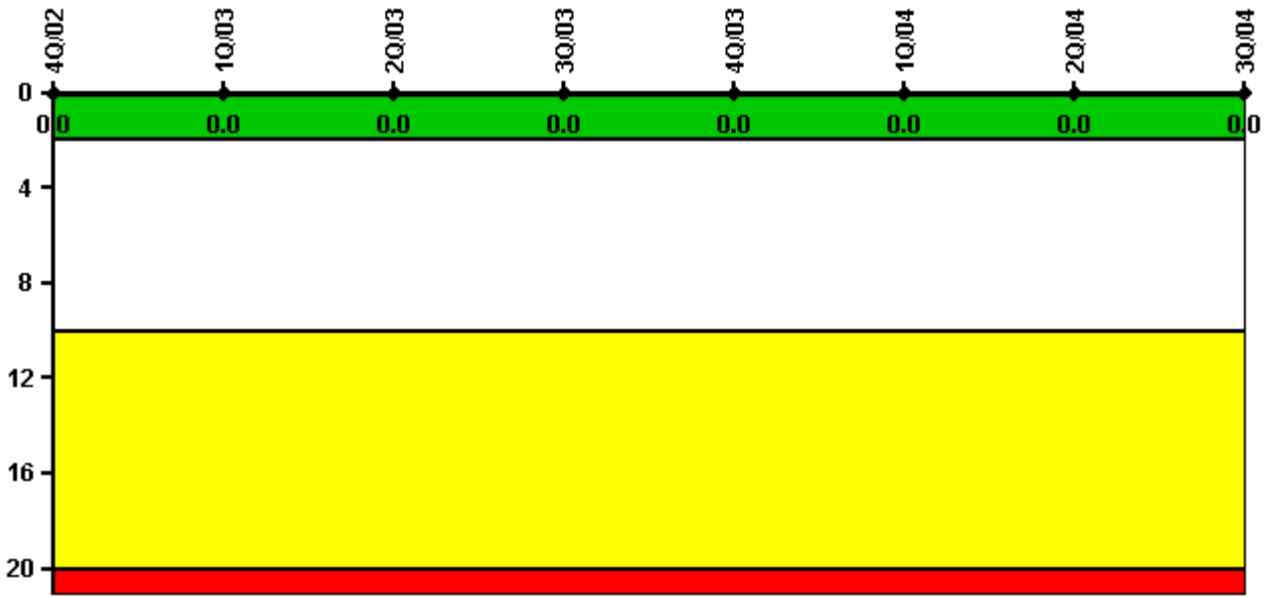
Thresholds: White > 3.0 Yellow > 6.0 Red > 25.0

### Notes

Unplanned Scrams per 7000 Critical Hrs	4Q/02	1Q/03	2Q/03	3Q/03	4Q/03	1Q/04	2Q/04	3Q/04
Unplanned scrams	0	0	0	0	0	0	0	0
Critical hours	2009.1	2160.0	2183.0	2208.0	2209.0	1565.2	1932.9	2208.0
Indicator value	0.9	0	0	0	0	0	0	0

Licensee Comments: none

### Scrams with Loss of Normal Heat Removal



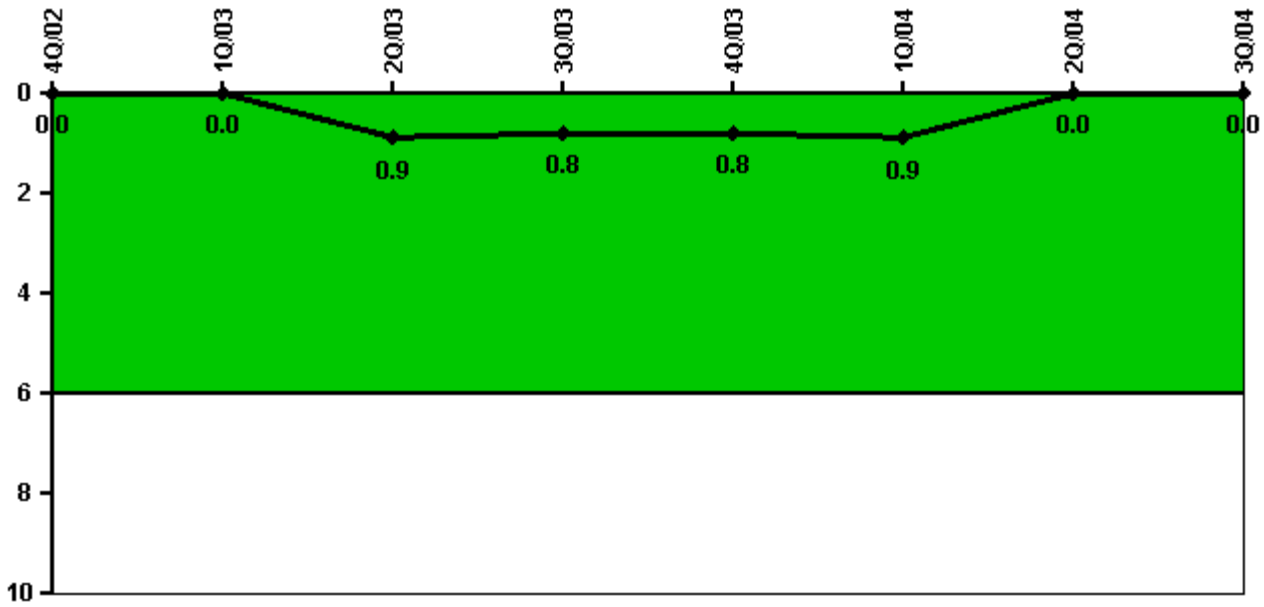
Thresholds: White > 2.0 Yellow > 10.0 Red > 20.0

#### Notes

Scrams with Loss of Normal Heat Removal	4Q/02	1Q/03	2Q/03	3Q/03	4Q/03	1Q/04	2Q/04	3Q/04
Scrams	0	0	0	0	0	0	0	0
Indicator value	0	0	0	0	0	0	0	0

Licensee Comments: none

### Unplanned Power Changes per 7000 Critical Hrs



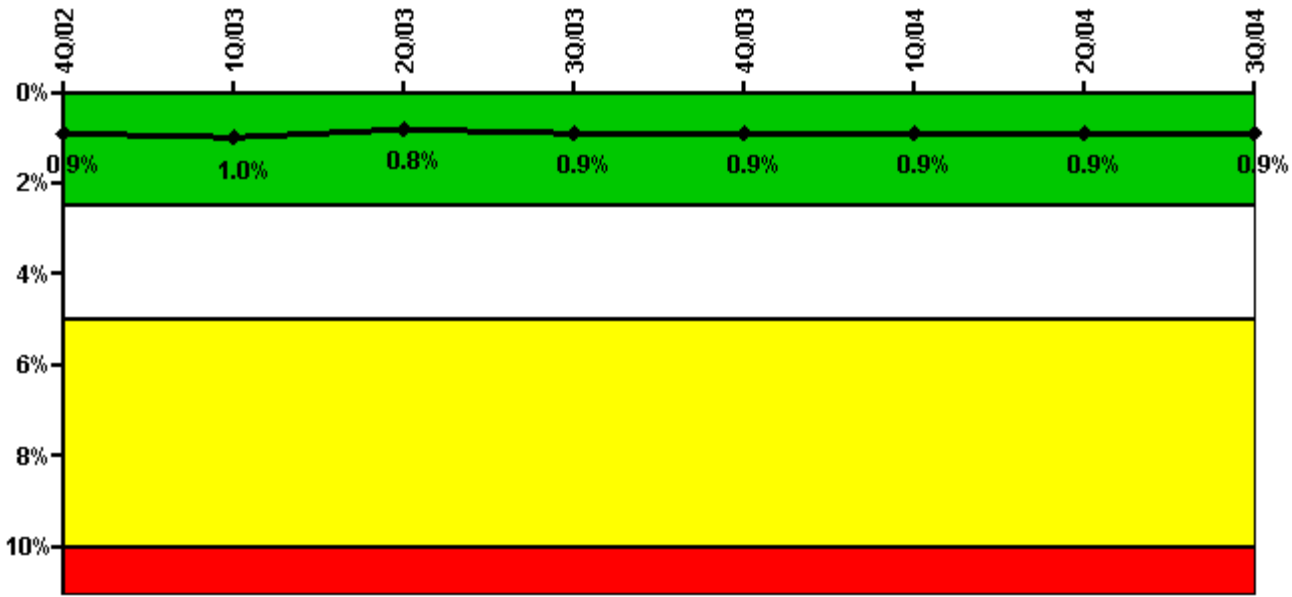
Thresholds: White > 6.0

#### Notes

Unplanned Power Changes per 7000 Critical Hrs	4Q/02	1Q/03	2Q/03	3Q/03	4Q/03	1Q/04	2Q/04	3Q/04
Unplanned power changes	0	0	1.0	0	0	0	0	0
Critical hours	2009.1	2160.0	2183.0	2208.0	2209.0	1565.2	1932.9	2208.0
Indicator value	0	0	0.9	0.8	0.8	0.9	0	0

Licensee Comments: none

### Safety System Unavailability, Emergency AC Power



Thresholds: White > 2.5% Yellow > 5.0% Red > 10.0%

#### Notes

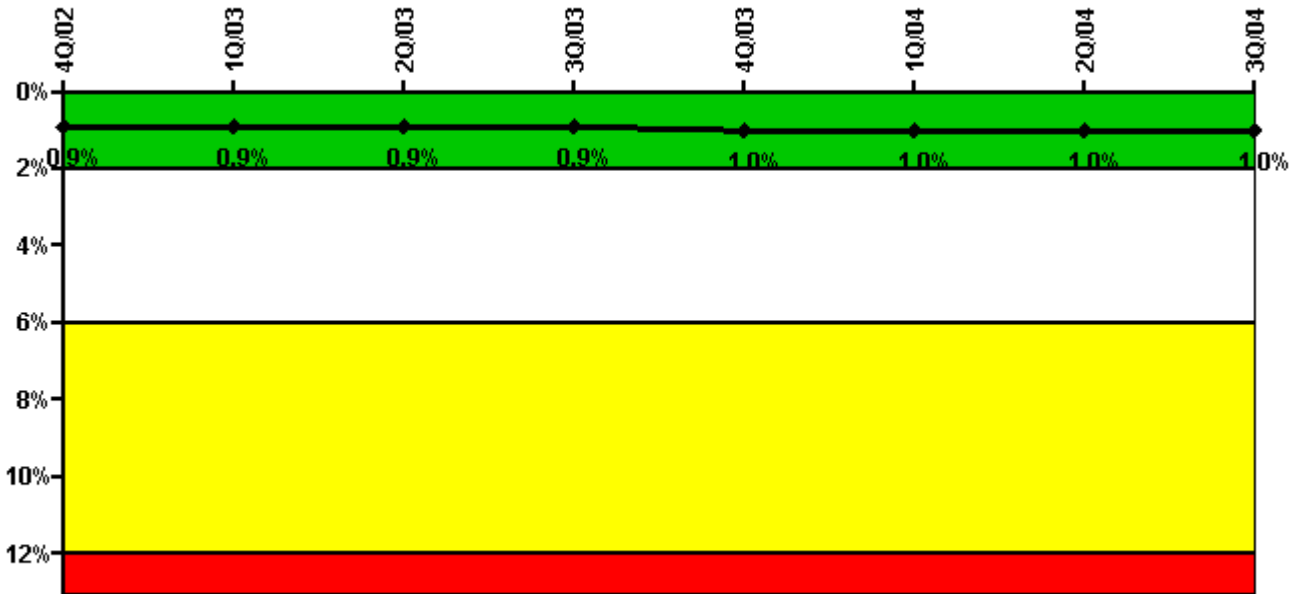
Safety System Unavailability, Emergency AC Power	4Q/02	1Q/03	2Q/03	3Q/03	4Q/03	1Q/04	2Q/04	3Q/04
<b>Train 1</b>								
Planned unavailable hours	8.37	18.98	22.60	21.05	15.52	15.55	15.28	20.26
Unplanned unavailable hours	0	0	0	0	0	0	0.10	0
Fault exposure hours	0	0	0	0	0	0	0	0
Effective Reset hours	0	0	0	0	0	0	0	0
Required hours	2209.00	2160.00	2183.00	2208.00	2209.00	2184.00	2183.00	2208.00
<b>Train 2</b>								
Planned unavailable hours	17.79	12.70	20.25	18.86	24.82	17.53	18.28	21.07
Unplanned unavailable hours	7.05	0	0	0	0	0	0	0
Fault exposure hours	0	0	0	0	0	0	0	0
Effective Reset hours	0	0	0	0	0	0	0	0
Required hours	2209.00	2160.00	2183.00	2208.00	2209.00	2184.00	2183.00	2208.00
<b>Indicator value</b>	<b>0.9%</b>	<b>1.0%</b>	<b>0.8%</b>	<b>0.9%</b>	<b>0.9%</b>	<b>0.9%</b>	<b>0.9%</b>	<b>0.9%</b>

Licensee Comments: none



Licensee Comments: none

### Safety System Unavailability, Heat Removal System (AFW)



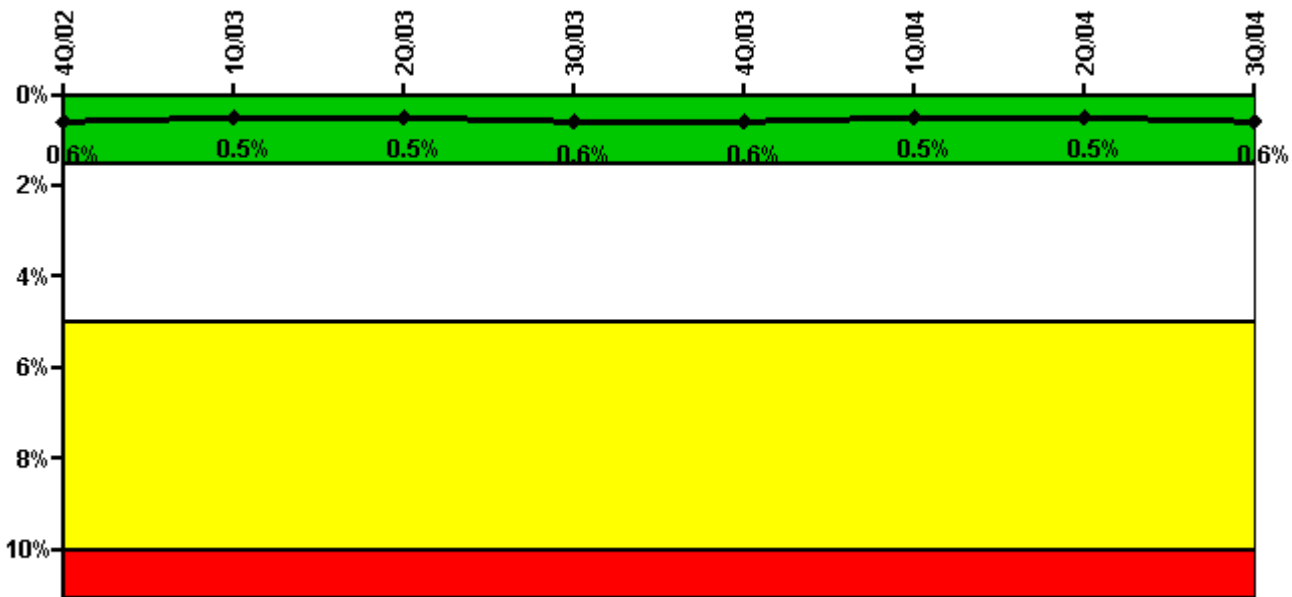
Thresholds: White > 2.0% Yellow > 6.0% Red > 12.0%

### Notes

Safety System Unavailability, Heat Removal System (AFW)	4Q/02	1Q/03	2Q/03	3Q/03	4Q/03	1Q/04	2Q/04	3Q/04
<b>Train 1</b>								
Planned unavailable hours	2.73	3.00	5.10	2.85	26.08	17.50	3.88	8.88
Unplanned unavailable hours	0	0	0	0	0	0	0	0
Fault exposure hours	0	0	0	0	0	0	0	0
Effective Reset hours	0	0	0	0	0	0	0	0
Required hours	2058.30	2160.00	2183.00	2208.00	2209.00	1570.30	2022.40	2208.00
<b>Train 2</b>								
Planned unavailable hours	22.55	4.70	3.12	16.70	4.97	15.45	9.57	3.62
Unplanned unavailable hours	0	0	0	0	0	0	0	0
Fault exposure hours	0	0	0	0	0	0	0	0
Effective Reset hours	0	0	0	0	0	0	0	0
Required hours	2058.30	2160.00	2183.00	2208.00	2209.00	1570.30	2022.40	2208.00
<b>Train 3</b>								
Planned unavailable hours	46.44	5.78	9.60	48.45	61.37	1.38	18.84	13.55
Unplanned unavailable hours	5.57	0	0	3.57	0	0	0	0
Fault exposure hours	0	0	0	0	0	0	0	0
Effective Reset hours	0	0	0	0	0	0	0	0
Required hours	2058.30	2160.00	2183.00	2208.00	2209.00	1570.30	2022.40	2208.00
<b>Indicator value</b>	<b>0.9%</b>	<b>0.9%</b>	<b>0.9%</b>	<b>0.9%</b>	<b>1.0%</b>	<b>1.0%</b>	<b>1.0%</b>	<b>1.0%</b>

Licensee Comments: none

### Safety System Unavailability, Residual Heat Removal System



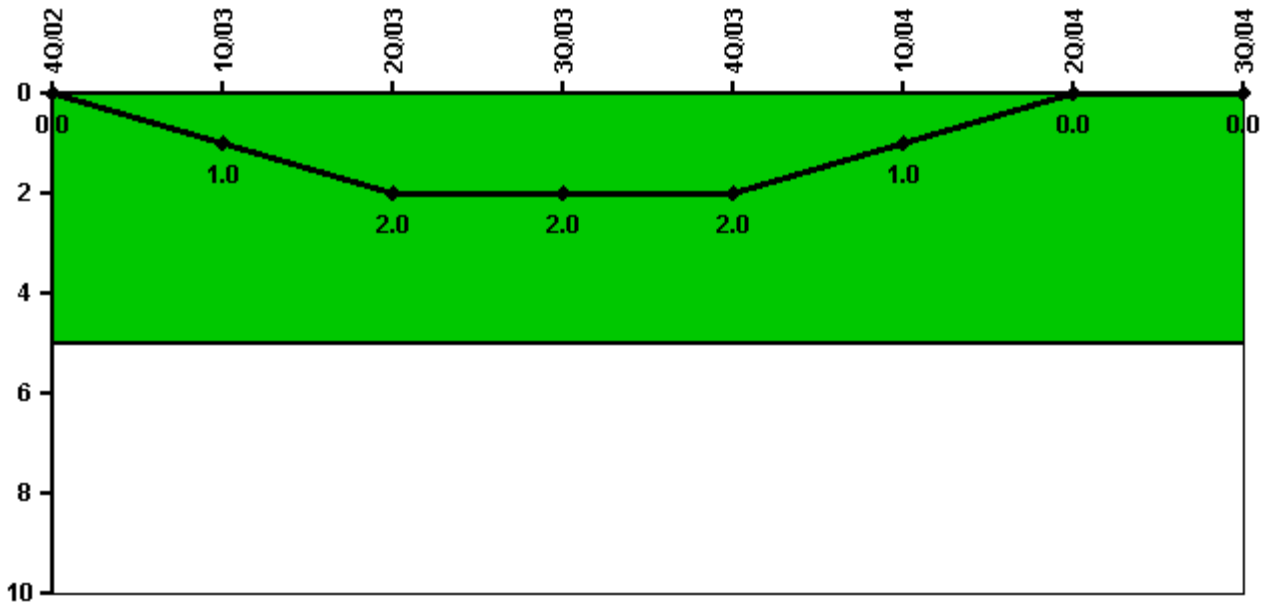
Thresholds: White > 1.5% Yellow > 5.0% Red > 10.0%

#### Notes

Safety System Unavailability, Residual Heat Removal System	4Q/02	1Q/03	2Q/03	3Q/03	4Q/03	1Q/04	2Q/04	3Q/04
<b>Train 1</b>								
Planned unavailable hours	8.69	22.56	4.00	13.90	11.80	2.00	2.00	25.68
Unplanned unavailable hours	0	0	0	0	0	0	0	0
Fault exposure hours	0	0	0	0	0	0	0	0
Effective Reset hours	0	0	0	0	0	0	0	0
Required hours	2209.00	2160.00	2183.00	2208.00	2209.00	2184.00	2183.00	2208.00
<b>Train 2</b>								
Planned unavailable hours	16.17	12.25	11.60	17.00	16.98	13.42	34.37	5.32
Unplanned unavailable hours	0	0	0	0	0	0	0	0
Fault exposure hours	0	0	0	0	0	0	0	0
Effective Reset hours	0	0	0	0	0	0	0	0
Required hours	2209.00	2160.00	2183.00	2208.00	2209.00	2184.00	2183.00	2208.00
<b>Indicator value</b>	<b>0.6%</b>	<b>0.5%</b>	<b>0.5%</b>	<b>0.6%</b>	<b>0.6%</b>	<b>0.5%</b>	<b>0.5%</b>	<b>0.6%</b>

Licensee Comments: none

### Safety System Functional Failures (PWR)



Thresholds: White > 5.0

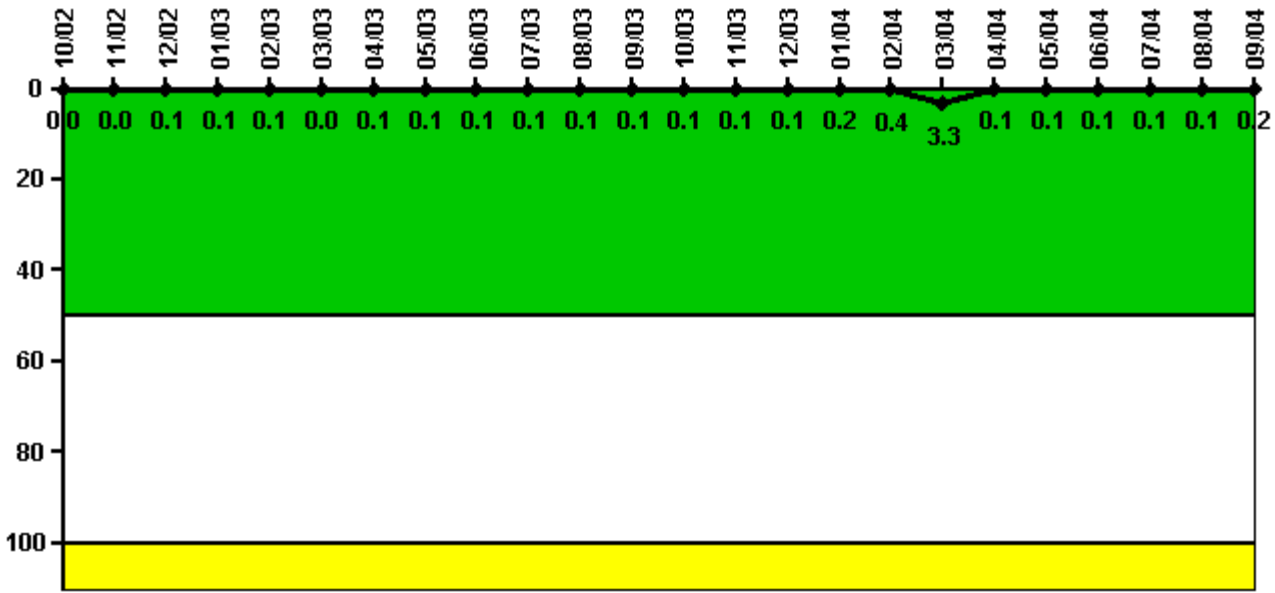
#### Notes

Safety System Functional Failures (PWR)	4Q/02	1Q/03	2Q/03	3Q/03	4Q/03	1Q/04	2Q/04	3Q/04
Safety System Functional Failures	0	1	1	0	0	0	0	0
Indicator value	0	1	2	2	2	1	0	0

Licensee Comments: none



### Reactor Coolant System Activity



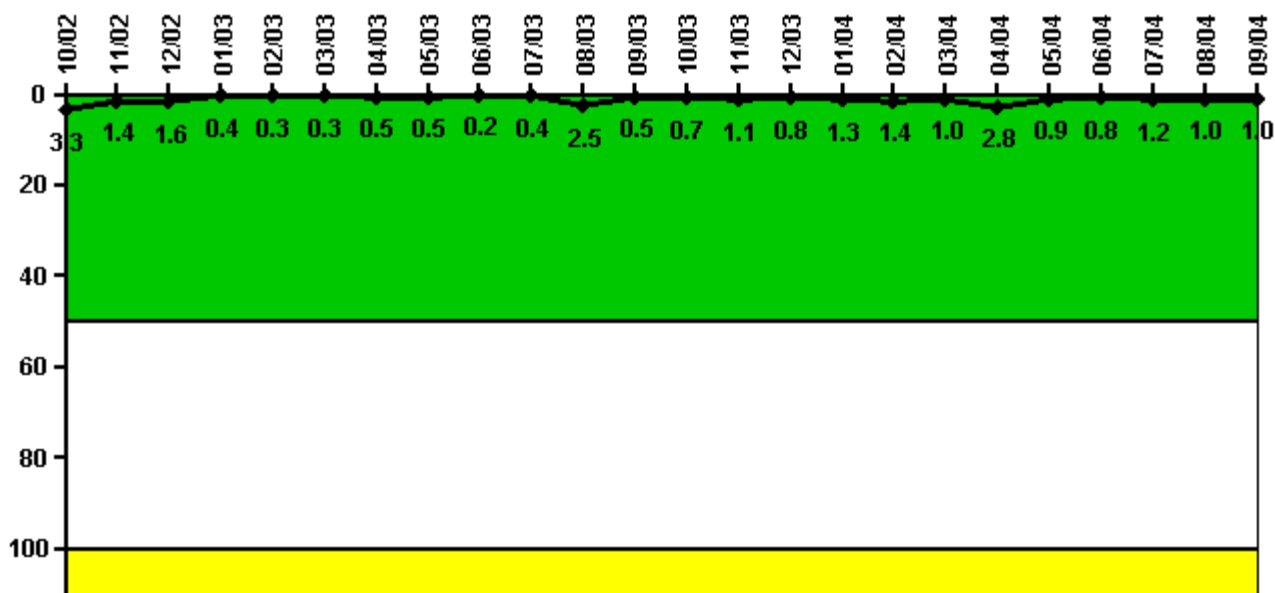
Thresholds: White > 50.0 Yellow > 100.0

#### Notes

Reactor Coolant System Activity	10/02	11/02	12/02	1/03	2/03	3/03	4/03	5/03	6/03	7/03	8/03	9/03
Maximum activity	0.000450	0.000470	0.000620	0.000660	0.000590	0.000470	0.000580	0.000890	0.000970	0.001280	0.000830	0.001020
Technical specification limit	1.0	1.0	1.0	1.0	1.0	1.0	1.0	1.0	1.0	1.0	1.0	1.0
Indicator value	0	0	0.1	0.1	0.1	0	0.1	0.1	0.1	0.1	0.1	0.1
Reactor Coolant System Activity	10/03	11/03	12/03	1/04	2/04	3/04	4/04	5/04	6/04	7/04	8/04	9/04
Maximum activity	0.001034	0.001338	0.001433	0.001563	0.003975	0.032820	0.000522	0.001160	0.000589	0.000646	0.000759	0.001617
Technical specification limit	1.0	1.0	1.0	1.0	1.0	1.0	1.0	1.0	1.0	1.0	1.0	1.0
Indicator value	0.1	0.1	0.1	0.2	0.4	3.3	0.1	0.1	0.1	0.1	0.1	0.2

Licensee Comments: none

### Reactor Coolant System Leakage



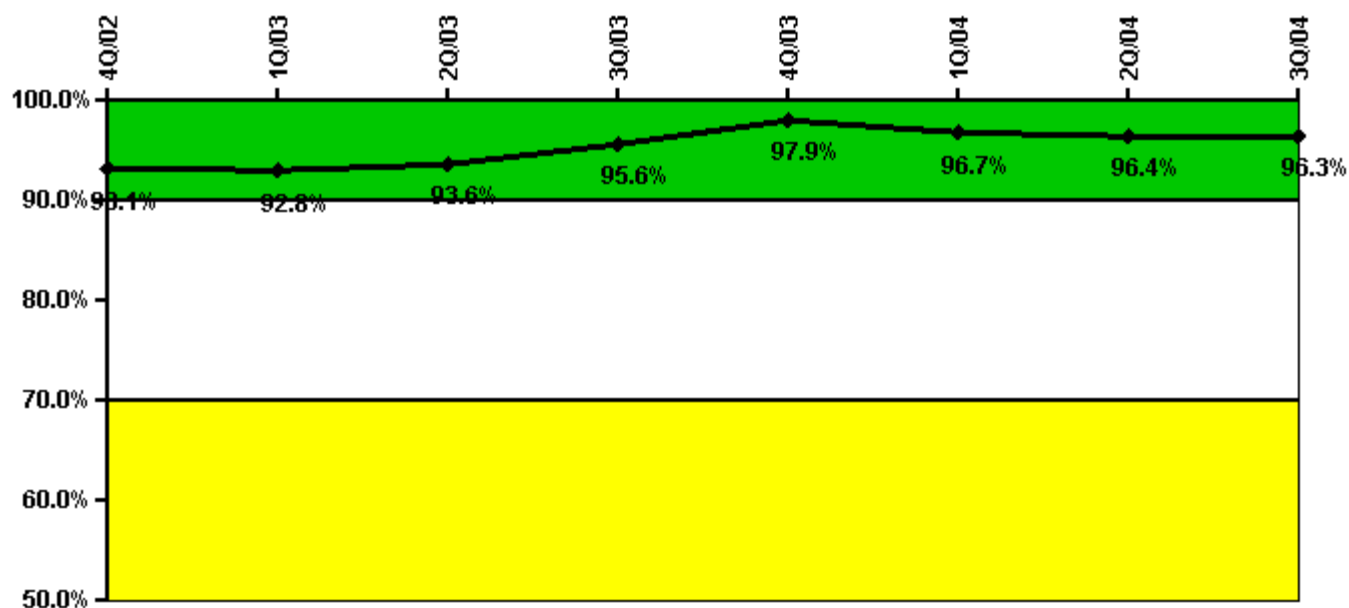
Thresholds: White > 50.0 Yellow > 100.0

#### Notes

Reactor Coolant System Leakage	10/02	11/02	12/02	1/03	2/03	3/03	4/03	5/03	6/03	7/03	8/03	9/03
Maximum leakage	0.330	0.141	0.159	0.042	0.026	0.033	0.054	0.047	0.018	0.040	0.247	0.053
Technical specification limit	10.0	10.0	10.0	10.0	10.0	10.0	10.0	10.0	10.0	10.0	10.0	10.0
Indicator value	3.3	1.4	1.6	0.4	0.3	0.3	0.5	0.5	0.2	0.4	2.5	0.5
Reactor Coolant System Leakage	10/03	11/03	12/03	1/04	2/04	3/04	4/04	5/04	6/04	7/04	8/04	9/04
Maximum leakage	0.068	0.111	0.084	0.125	0.143	0.095	0.284	0.086	0.078	0.118	0.104	0.099
Technical specification limit	10.0	10.0	10.0	10.0	10.0	10.0	10.0	10.0	10.0	10.0	10.0	10.0
Indicator value	0.7	1.1	0.8	1.3	1.4	1.0	2.8	0.9	0.8	1.2	1.0	1.0

Licensee Comments: none

### Drill/Exercise Performance



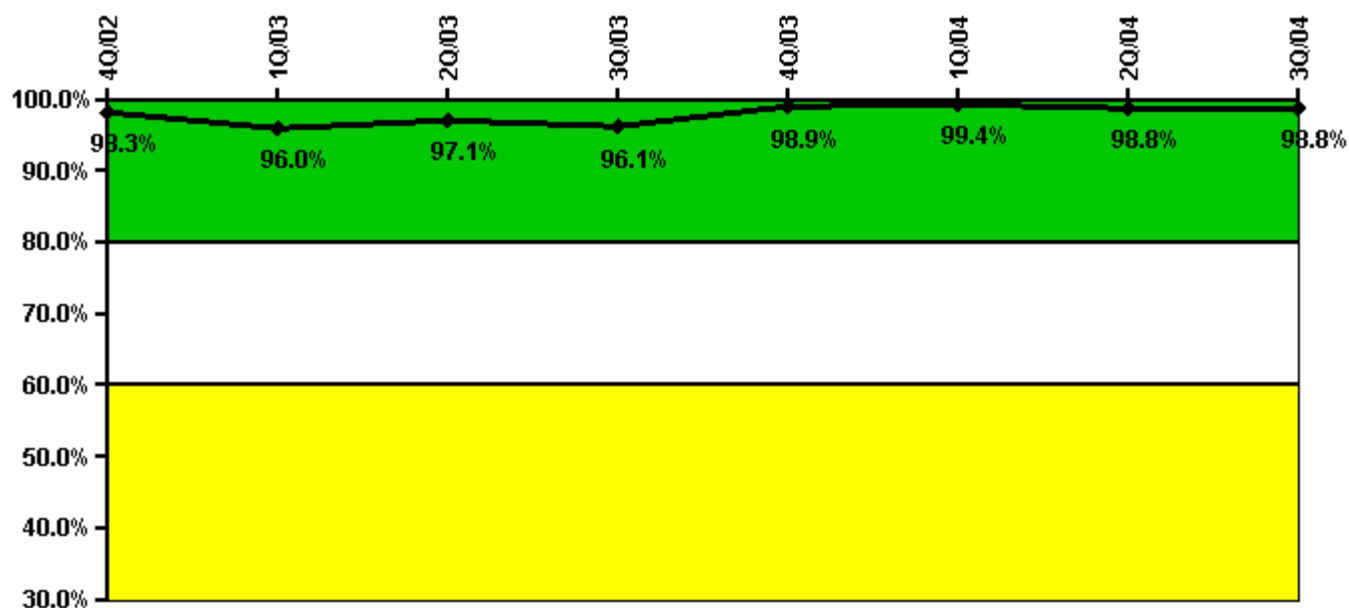
Thresholds: White < 90.0% Yellow < 70.0%

#### Notes

Drill/Exercise Performance	4Q/02	1Q/03	2Q/03	3Q/03	4Q/03	1Q/04	2Q/04	3Q/04
Successful opportunities	14.0	13.0	26.0	10.0	58.0	13.0	23.0	0
Total opportunities	14.0	14.0	26.0	10.0	59.0	16.0	24.0	0
Indicator value	93.1%	92.8%	93.6%	95.6%	97.9%	96.7%	96.4%	96.3%

Licensee Comments: none

### ERO Drill Participation



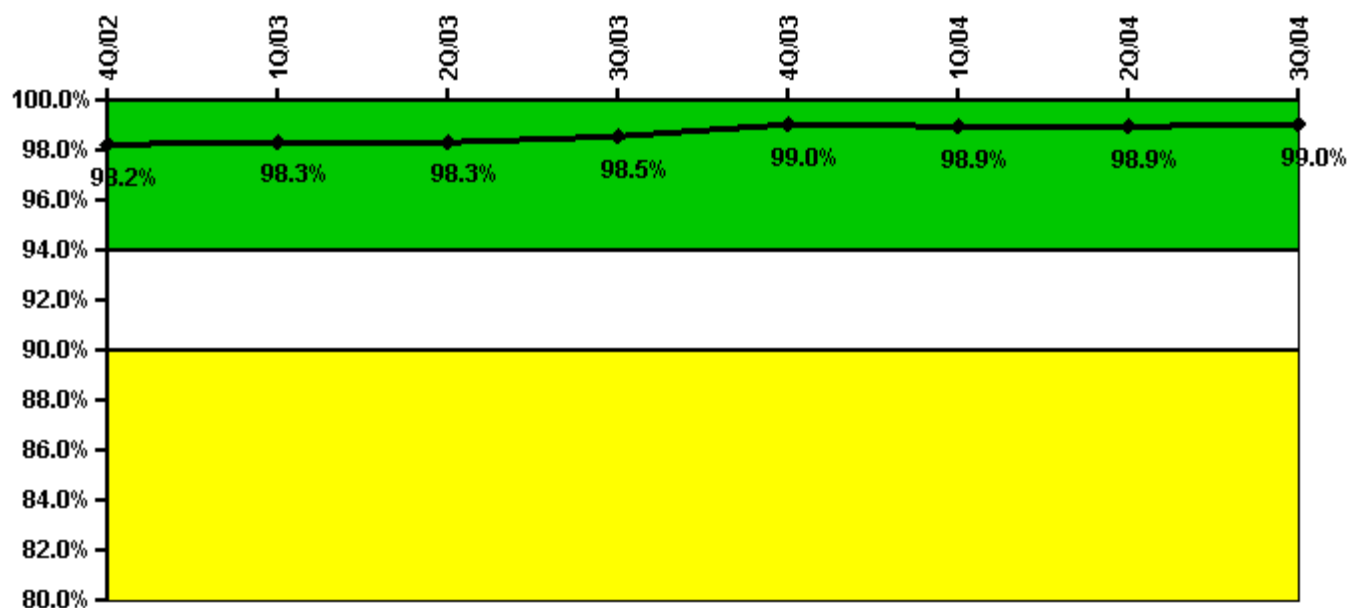
Thresholds: White < 80.0% Yellow < 60.0%

#### Notes

ERO Drill Participation	4Q/02	1Q/03	2Q/03	3Q/03	4Q/03	1Q/04	2Q/04	3Q/04
Participating Key personnel	172.0	167.0	169.0	171.0	174.0	173.0	170.0	169.0
Total Key personnel	175.0	174.0	174.0	178.0	176.0	174.0	172.0	171.0
Indicator value	98.3%	96.0%	97.1%	96.1%	98.9%	99.4%	98.8%	98.8%

Licensee Comments: none

### Alert & Notification System



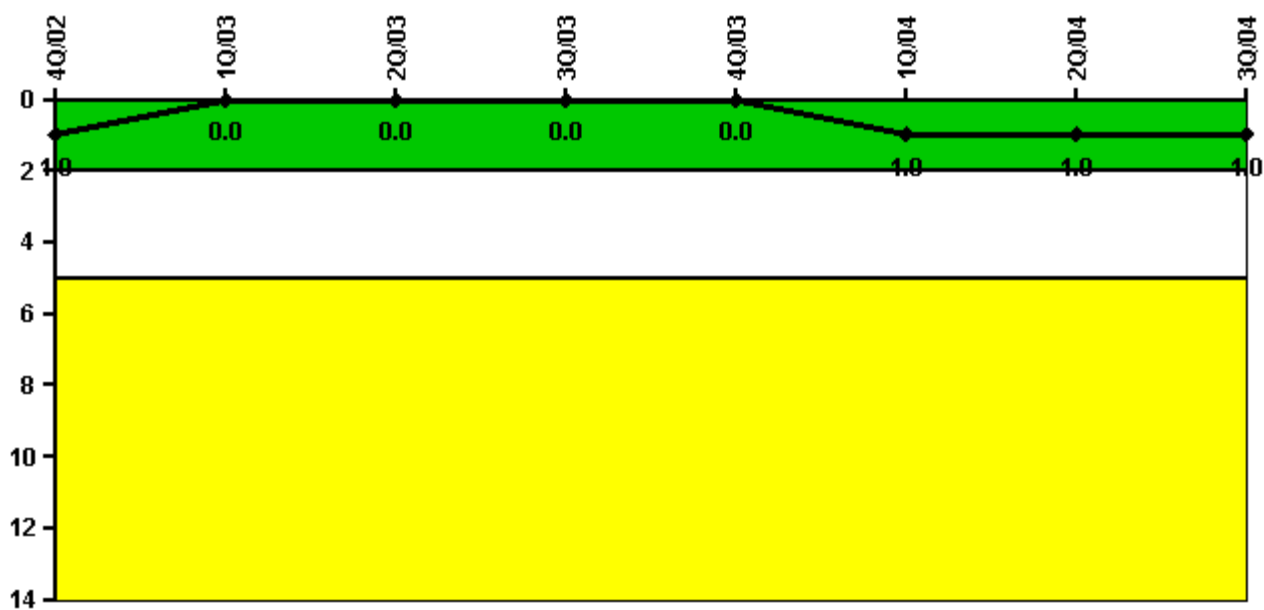
Thresholds: White < 94.0% Yellow < 90.0%

#### Notes

Alert & Notification System	4Q/02	1Q/03	2Q/03	3Q/03	4Q/03	1Q/04	2Q/04	3Q/04
Successful siren-tests	1744	1720	1796	1845	1727	1788	1794	1868
Total sirens-tests	1812	1730	1809	1860	1759	1809	1809	1876
Indicator value	98.2%	98.3%	98.3%	98.5%	99.0%	98.9%	98.9%	99.0%

Licensee Comments: none

### Occupational Exposure Control Effectiveness



Thresholds: White > 2.0 Yellow > 5.0

#### Notes

Occupational Exposure Control Effectiveness	4Q/02	1Q/03	2Q/03	3Q/03	4Q/03	1Q/04	2Q/04	3Q/04
High radiation area occurrences	0	0	0	0	0	1	0	0
Very high radiation area occurrences	0	0	0	0	0	0	0	0
Unintended exposure occurrences	0	0	0	0	0	0	0	0
<b>Indicator value</b>	<b>1</b>	<b>0</b>	<b>0</b>	<b>0</b>	<b>0</b>	<b>1</b>	<b>1</b>	<b>1</b>

Licensee Comments: none

### RETS/ODCM Radiological Effluent



**Thresholds: White > 1.0 Yellow > 3.0**

**Notes**

RETS/ODCM Radiological Effluent	4Q/02	1Q/03	2Q/03	3Q/03	4Q/03	1Q/04	2Q/04	3Q/04
RETS/ODCM occurrences	0	0	0	0	0	0	0	0
Indicator value	0	0	0	0	0	0	0	0

Licensee Comments: none

[Physical Protection](#) information not publicly available.

▲ [Action Matrix Summary](#) | [Inspection Findings Summary](#) | [PI Summary](#) | [Reactor Oversight Process](#)

Last Modified: October 25, 2004