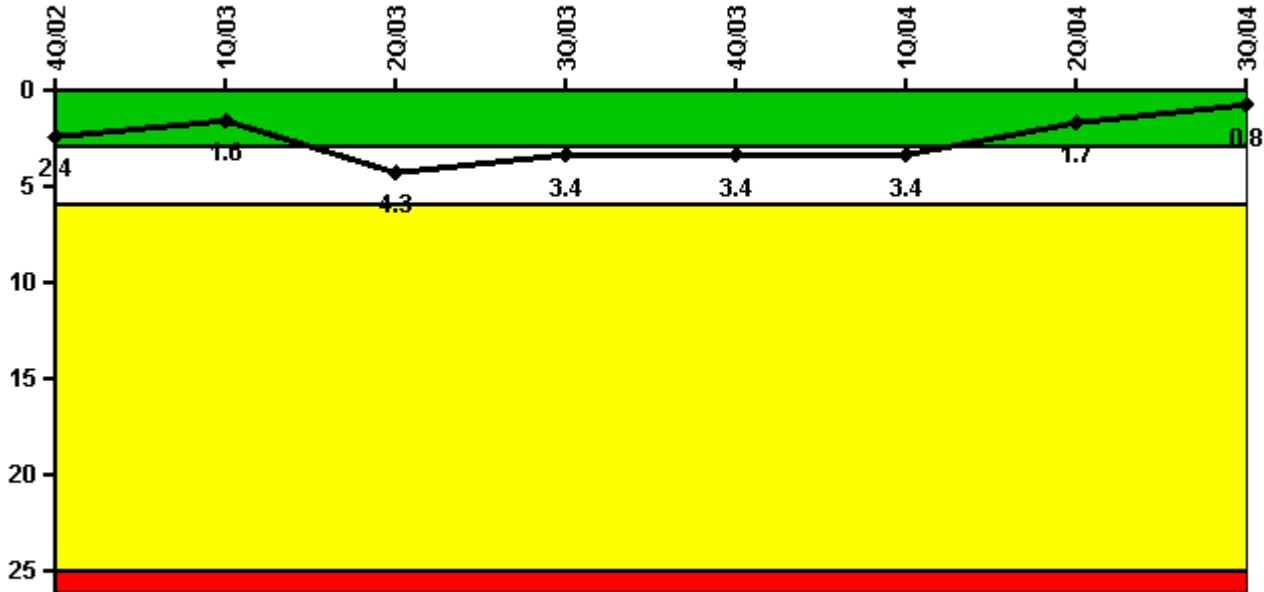


# Harris 1

## 3Q/2004 Performance Indicators

Licensee's General Comments: none

### Unplanned Scrams per 7000 Critical Hrs



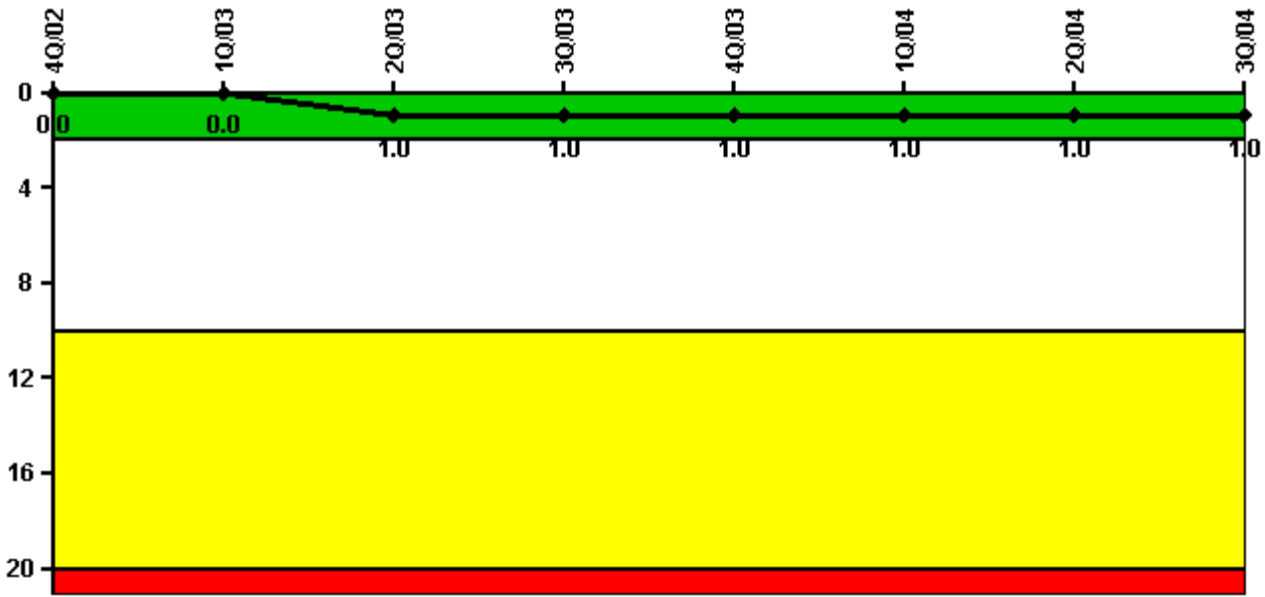
Thresholds: White > 3.0 Yellow > 6.0 Red > 25.0

### Notes

Unplanned Scrams per 7000 Critical Hrs	4Q/02	1Q/03	2Q/03	3Q/03	4Q/03	1Q/04	2Q/04	3Q/04
Unplanned scrams	0	0	3.0	1.0	0	0	1.0	0
Critical hours	2209.0	2160.0	1605.6	2190.4	2209.0	2184.0	1878.4	2208.0
Indicator value	2.4	1.6	4.3	3.4	3.4	3.4	1.7	0.8

Licensee Comments: none

### Scrams with Loss of Normal Heat Removal



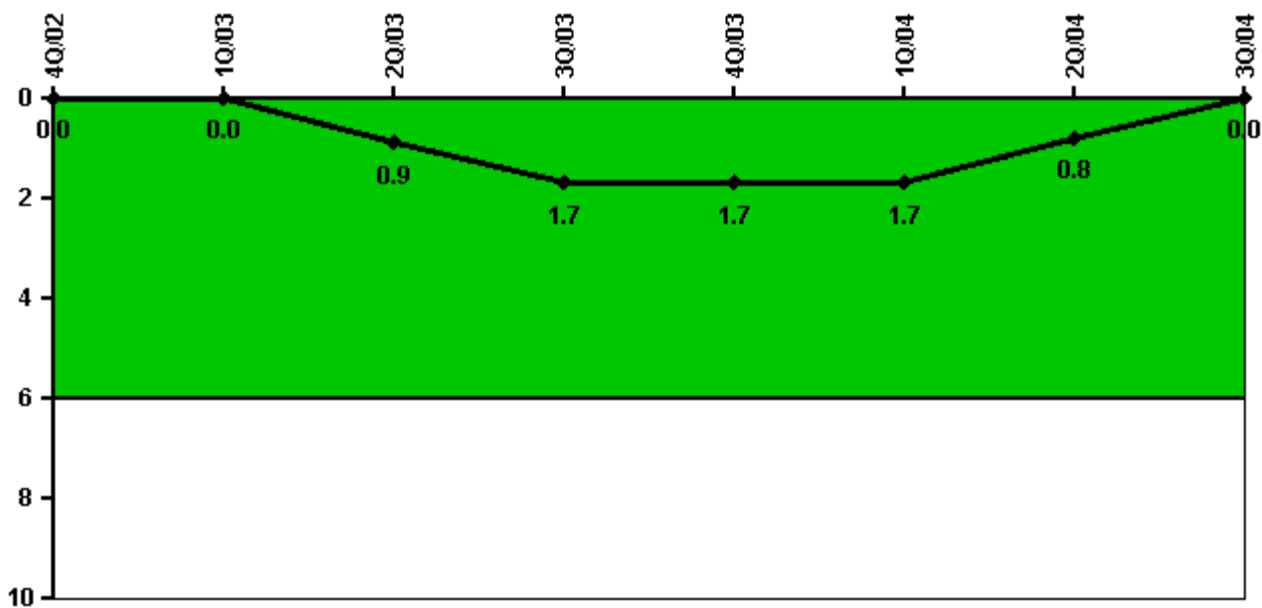
Thresholds: White > 2.0 Yellow > 10.0 Red > 20.0

#### Notes

Scrams with Loss of Normal Heat Removal	4Q/02	1Q/03	2Q/03	3Q/03	4Q/03	1Q/04	2Q/04	3Q/04
Scrams	0	0	1.0	0	0	0	0	0
Indicator value	0	0	1.0	1.0	1.0	1.0	1.0	1.0

Licensee Comments: none

### Unplanned Power Changes per 7000 Critical Hrs



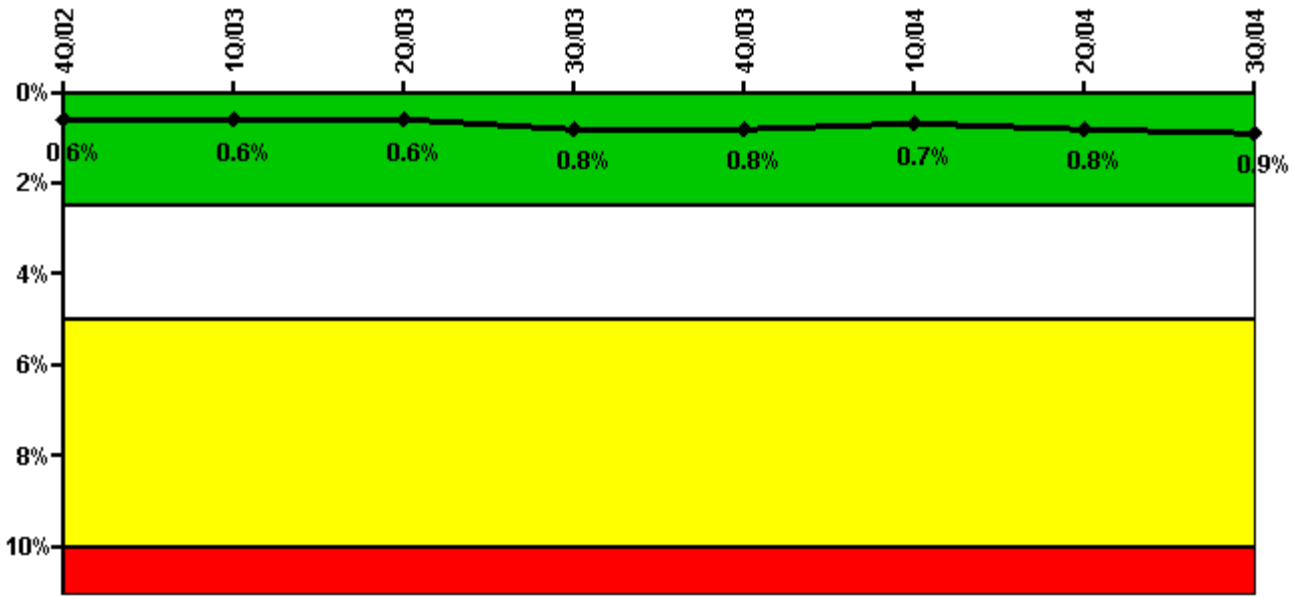
Thresholds: White > 6.0

#### Notes

Unplanned Power Changes per 7000 Critical Hrs	4Q/02	1Q/03	2Q/03	3Q/03	4Q/03	1Q/04	2Q/04	3Q/04
Unplanned power changes	0	0	1.0	1.0	0	0	0	0
Critical hours	2209.0	2160.0	1605.6	2190.4	2209.0	2184.0	1878.4	2208.0
Indicator value	0	0	0.9	1.7	1.7	1.7	0.8	0

Licensee Comments: none

### Safety System Unavailability, Emergency AC Power



Thresholds: White > 2.5% Yellow > 5.0% Red > 10.0%

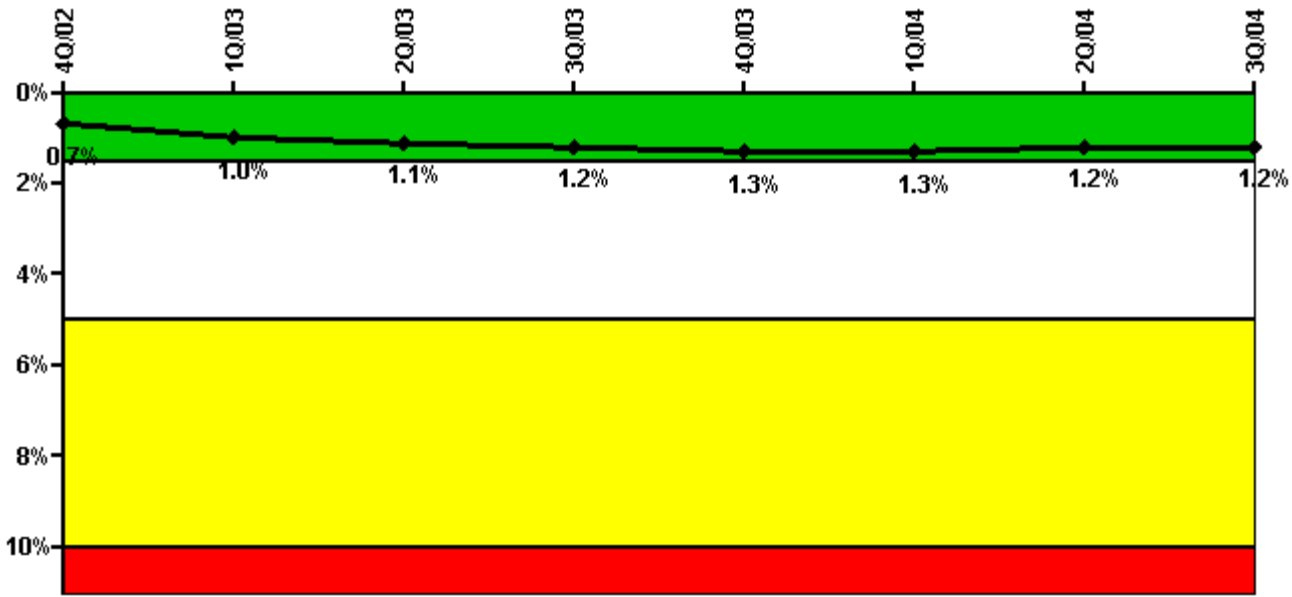
#### Notes

Safety System Unavailability, Emergency AC Power	4Q/02	1Q/03	2Q/03	3Q/03	4Q/03	1Q/04	2Q/04	3Q/04
<b>Train 1</b>								
Planned unavailable hours	11.20	1.97	17.75	33.50	20.74	1.78	31.25	45.30
Unplanned unavailable hours	3.20	0	0	0	0	0	0	0
Fault exposure hours	0	0	0	0	0	0	0	0
Effective Reset hours	0	0	0	0	0	0	0	0
Required hours	2209.00	2160.00	1859.58	2208.00	2209.00	2184.00	2105.83	2208.00
<b>Train 2</b>								
Planned unavailable hours	17.25	24.03	2.57	68.78	8.45	20.37	2.95	36.70
Unplanned unavailable hours	0	0	0	0	0	0	0	0
Fault exposure hours	0	0	0	0	0	0	0	0
Effective Reset hours	0	0	0	0	0	0	0	0
Required hours	2209.00	2160.00	2152.97	2208.00	2209.00	2184.00	2025.87	2208.00
<b>Indicator value</b>	<b>0.6%</b>	<b>0.6%</b>	<b>0.6%</b>	<b>0.8%</b>	<b>0.8%</b>	<b>0.7%</b>	<b>0.8%</b>	<b>0.9%</b>

Licensee Comments:

3Q/04: Harris has submitted an FAQ which may affect Emergency AC Power System unavailability for the third quarter of 2004.

### Safety System Unavailability, High Pressure Injection System (HPSI)



Thresholds: White > 1.5% Yellow > 5.0% Red > 10.0%

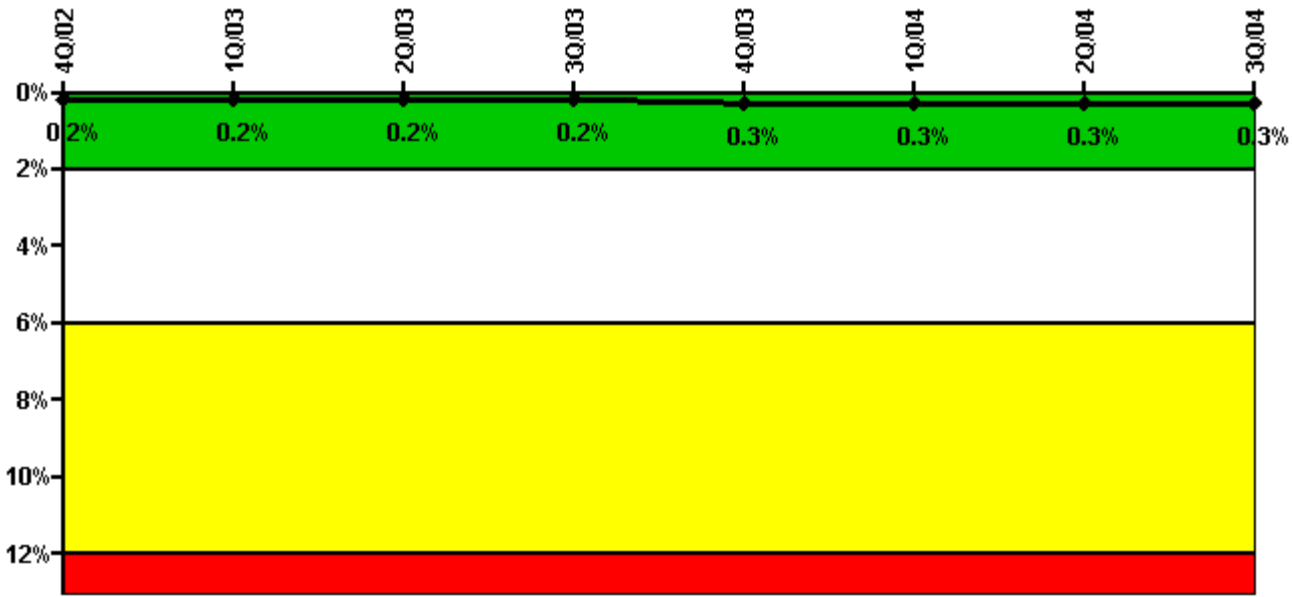
**Notes**

Safety System Unavailability, High Pressure Injection System (HPSI)	4Q/02	1Q/03	2Q/03	3Q/03	4Q/03	1Q/04	2Q/04	3Q/04
<b>Train 1</b>								
Planned unavailable hours	16.52	73.89	19.50	51.40	39.58	36.40	5.50	34.30
Unplanned unavailable hours	18.73	0	0	0	0	0	0	9.00
Fault exposure hours	0	0	0	0	0	0	0	0
Effective Reset hours	0	0	0	0	0	0	0	0
Required hours	2209.00	2160.00	1830.60	2208.00	2209.00	2184.00	1878.40	2208.00
<b>Train 2</b>								
Planned unavailable hours	9.28	41.42	17.13	25.30	21.20	10.70	1.20	4.10
Unplanned unavailable hours	0	7.65	0	0	0	0	0	0
Fault exposure hours	0	0	0	0	0	0	0	0
Effective Reset hours	0	0	0	0	0	0	0	0
Required hours	2209.00	2160.00	1830.60	2208.00	2209.00	2184.00	1878.40	2208.00
<b>Indicator value</b>	<b>0.7%</b>	<b>1.0%</b>	<b>1.1%</b>	<b>1.2%</b>	<b>1.3%</b>	<b>1.3%</b>	<b>1.2%</b>	<b>1.2%</b>

Licensee Comments:

3Q/04: Harris has submitted an FAQ which may affect High Pressure Injection System unavailability for the third quarter of 2004. Also, High Pressure Injection System Train 1, 161.5 hours of T/2 fault exposure hours.

### Safety System Unavailability, Heat Removal System (AFW)



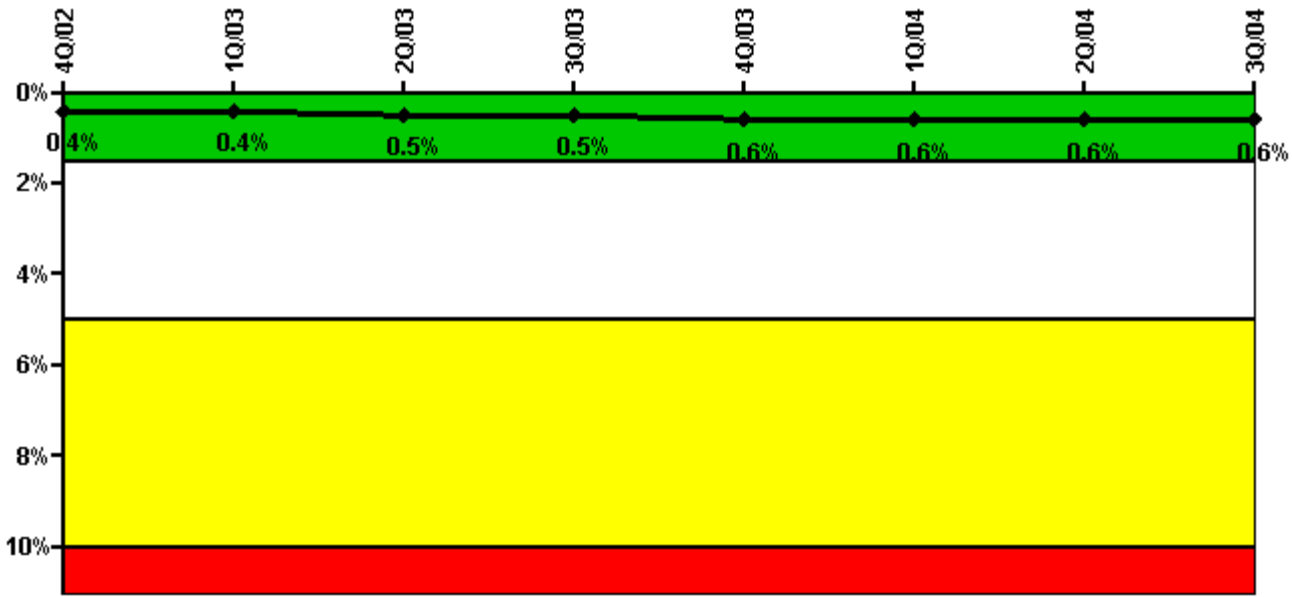
Thresholds: White > 2.0% Yellow > 6.0% Red > 12.0%

**Notes**

Safety System Unavailability, Heat Removal System (AFW)	4Q/02	1Q/03	2Q/03	3Q/03	4Q/03	1Q/04	2Q/04	3Q/04
<b>Train 1</b>								
Planned unavailable hours	1.30	2.30	1.13	7.70	1.20	10.40	2.50	3.80
Unplanned unavailable hours	0	0	0	0	0	0	0	0
Fault exposure hours	0	0	0	0	0	0	0	0
Effective Reset hours	0	0	0	0	0	0	0	0
Required hours	2209.00	2160.00	1731.15	2208.00	2209.00	2184.00	1878.40	2208.00
<b>Train 2</b>								
Planned unavailable hours	2.60	5.20	2.83	10.60	1.20	2.50	1.70	11.30
Unplanned unavailable hours	0	0	0	0	0	0	0	0
Fault exposure hours	0	0	0	0	0	0	0	0
Effective Reset hours	0	0	0	0	0	0	0	0
Required hours	2209.00	2160.00	1731.15	2208.00	2209.00	2184.00	1878.40	2208.00
<b>Train 3</b>								
Planned unavailable hours	9.00	21.80	5.57	19.50	0	0	6.50	6.20
Unplanned unavailable hours	0	0	0	0	27.50	0	38.20	0
Fault exposure hours	0	0	0	0	0	0	0	0
Effective Reset hours	0	0	0	0	0	0	0	0
Required hours	2209.00	2160.00	1731.15	2208.00	2209.00	2184.00	1878.40	2208.00
<b>Indicator value</b>	<b>0.2%</b>	<b>0.2%</b>	<b>0.2%</b>	<b>0.2%</b>	<b>0.3%</b>	<b>0.3%</b>	<b>0.3%</b>	<b>0.3%</b>

Licensee Comments: none

### Safety System Unavailability, Residual Heat Removal System



Thresholds: White > 1.5% Yellow > 5.0% Red > 10.0%

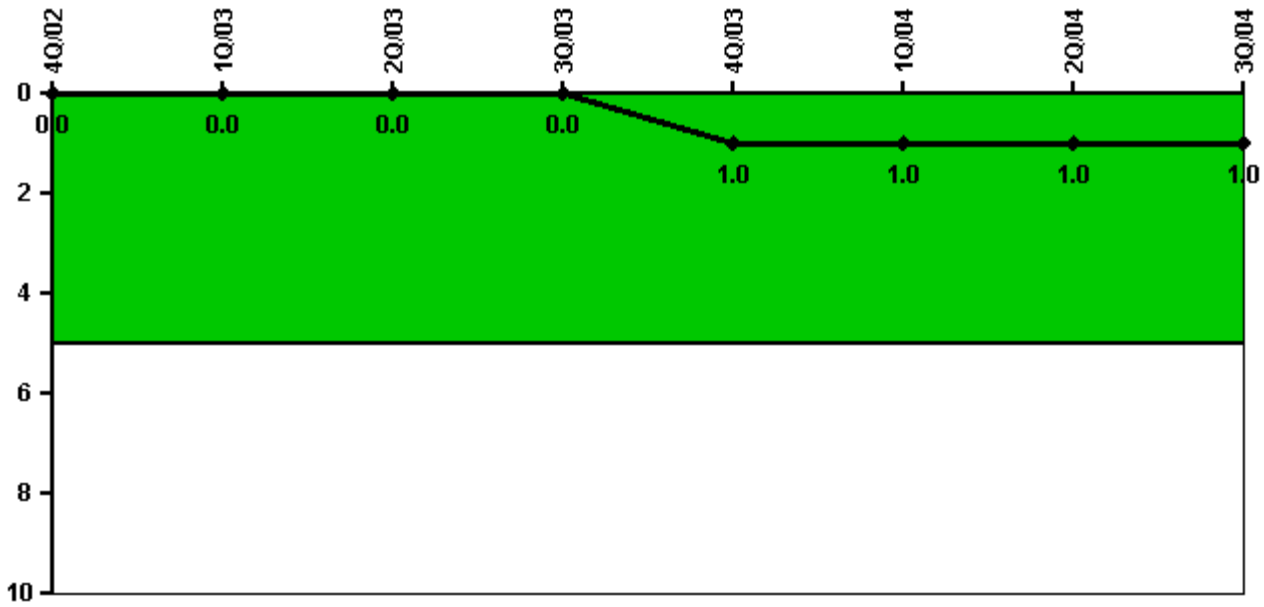
Notes

Safety System Unavailability, Residual Heat Removal System	4Q/02	1Q/03	2Q/03	3Q/03	4Q/03	1Q/04	2Q/04	3Q/04
<b>Train 1</b>								
Planned unavailable hours	9.88	6.12	15.05	24.40	8.60	15.40	14.60	40.40
Unplanned unavailable hours	0	0	0	0	0	0	8.10	0
Fault exposure hours	0	0	0	0	0	0	0	0
Effective Reset hours	0	0	0	0	0	0	0	0
Required hours	2209.00	2160.00	2097.50	2208.00	2209.00	2184.00	2183.00	2208.00
<b>Train 2</b>								
Planned unavailable hours	4.42	31.90	5.17	12.90	12.00	3.10	1.20	15.60
Unplanned unavailable hours	0	0	0	0	0	0	0	0
Fault exposure hours	0	0	0	0	0	0	0	0
Effective Reset hours	0	0	0	0	0	0	0	0
Required hours	2209.00	2160.00	2097.50	2208.00	2209.00	2184.00	2183.00	2208.00
<b>Indicator value</b>	<b>0.4%</b>	<b>0.4%</b>	<b>0.5%</b>	<b>0.5%</b>	<b>0.6%</b>	<b>0.6%</b>	<b>0.6%</b>	<b>0.6%</b>

Licensee Comments:

3Q/04: Harris has submitted an FAQ which may affect RHR system unavailability for the third quarter of 2004.

### Safety System Functional Failures (PWR)



Thresholds: White > 5.0

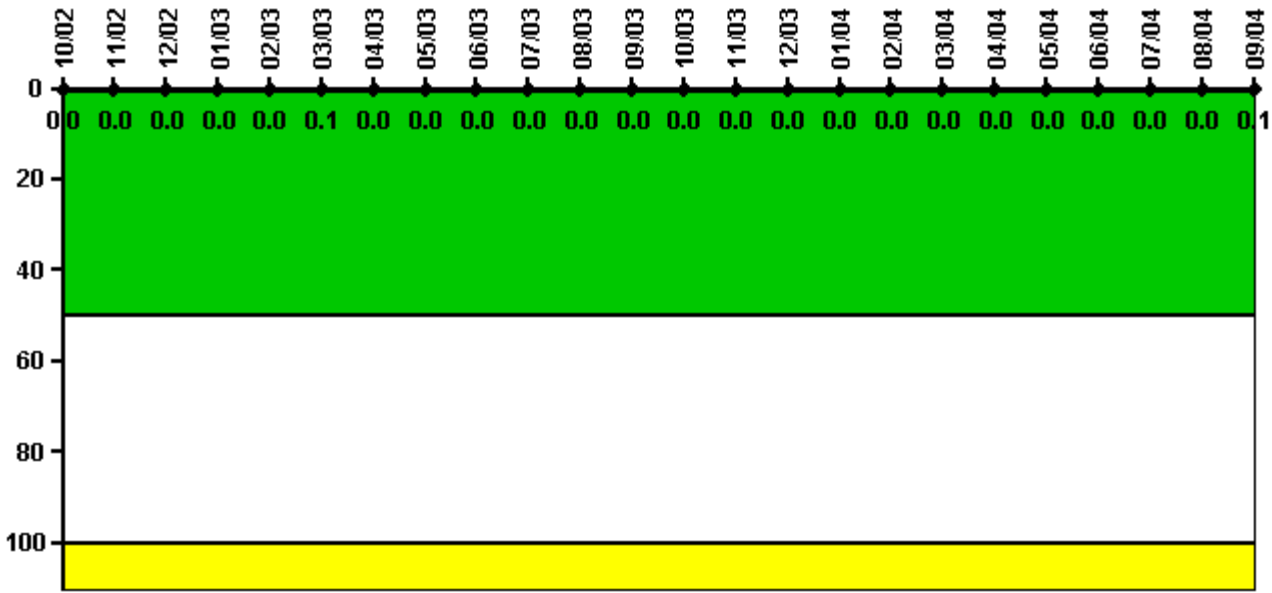
#### Notes

Safety System Functional Failures (PWR)	4Q/02	1Q/03	2Q/03	3Q/03	4Q/03	1Q/04	2Q/04	3Q/04
Safety System Functional Failures	0	0	0	0	1	0	0	0
Indicator value	0	0	0	0	1	1	1	1

Licensee Comments: none



### Reactor Coolant System Activity



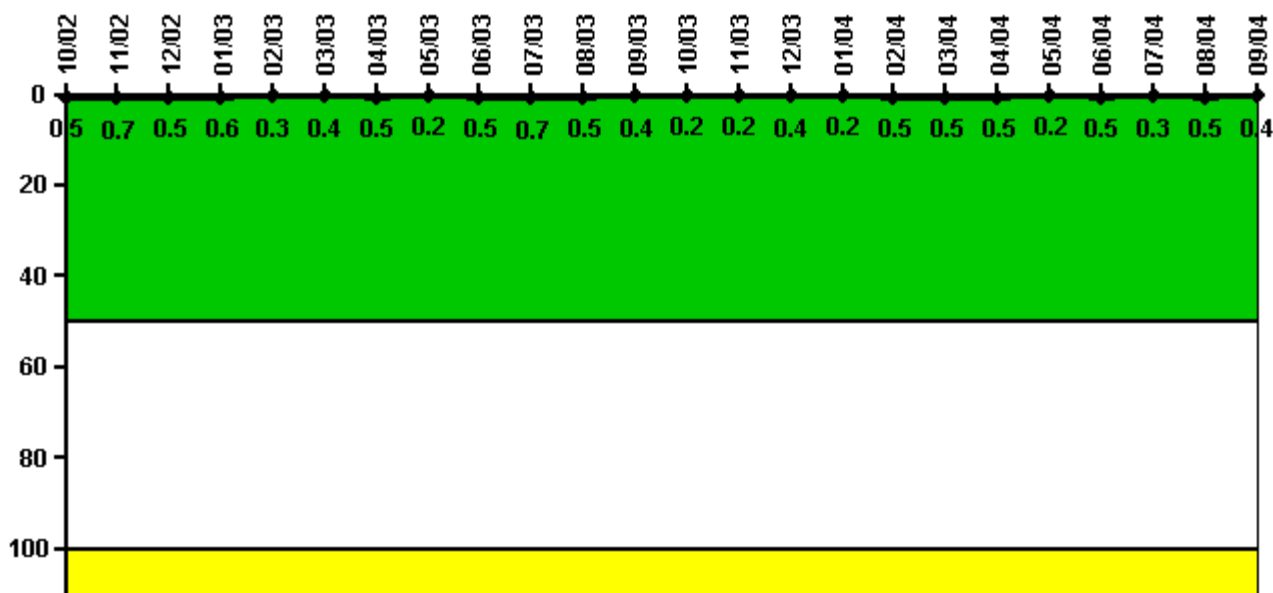
Thresholds: White > 50.0 Yellow > 100.0

#### Notes

Reactor Coolant System Activity	10/02	11/02	12/02	1/03	2/03	3/03	4/03	5/03	6/03	7/03	8/03	9/03
Maximum activity	0.000189	0.000181	0.000187	0.000194	0.000199	0.000732	0.000208	0.000072	0.000086	0.000092	0.000103	0.000100
Technical specification limit	1.0	1.0	1.0	1.0	1.0	1.0	1.0	1.0	1.0	1.0	1.0	1.0
Indicator value	0	0	0	0	0	0.1	0	0	0	0	0	0
Reactor Coolant System Activity	10/03	11/03	12/03	1/04	2/04	3/04	4/04	5/04	6/04	7/04	8/04	9/04
Maximum activity	0.000173	0.000099	0.000103	0.000109	0.000113	0.000110	0.000113	0.000117	0.000122	0.000125	0.000128	0.000528
Technical specification limit	1.0	1.0	1.0	1.0	1.0	1.0	1.0	1.0	1.0	1.0	1.0	1.0
Indicator value	0	0	0	0	0	0	0	0	0	0	0	0.1

Licensee Comments: none

### Reactor Coolant System Leakage



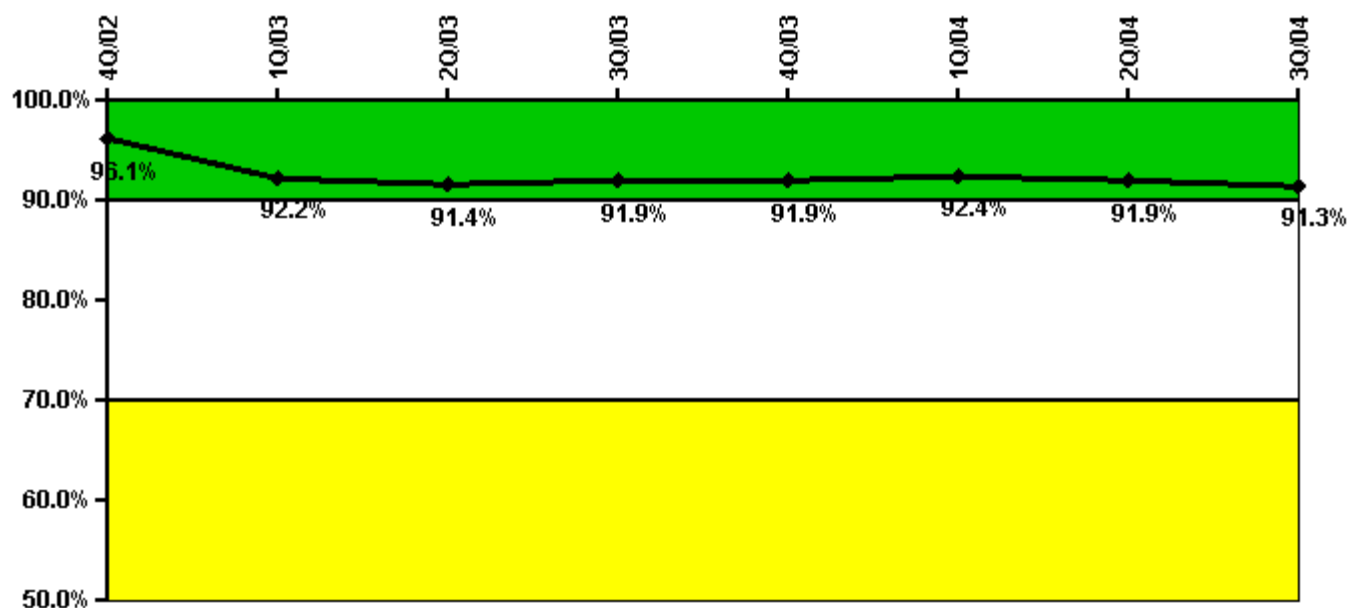
**Thresholds: White > 50.0 Yellow > 100.0**

**Notes**

Reactor Coolant System Leakage	10/02	11/02	12/02	1/03	2/03	3/03	4/03	5/03	6/03	7/03	8/03	9/03
Maximum leakage	0.050	0.070	0.050	0.060	0.030	0.040	0.050	0.020	0.050	0.070	0.050	0.040
Technical specification limit	10.0	10.0	10.0	10.0	10.0	10.0	10.0	10.0	10.0	10.0	10.0	10.0
Indicator value	0.5	0.7	0.5	0.6	0.3	0.4	0.5	0.2	0.5	0.7	0.5	0.4
Reactor Coolant System Leakage	10/03	11/03	12/03	1/04	2/04	3/04	4/04	5/04	6/04	7/04	8/04	9/04
Maximum leakage	0.020	0.020	0.040	0.020	0.050	0.050	0.050	0.020	0.050	0.030	0.050	0.040
Technical specification limit	10.0	10.0	10.0	10.0	10.0	10.0	10.0	10.0	10.0	10.0	10.0	10.0
Indicator value	0.2	0.2	0.4	0.2	0.5	0.5	0.5	0.2	0.5	0.3	0.5	0.4

Licensee Comments: none

### Drill/Exercise Performance



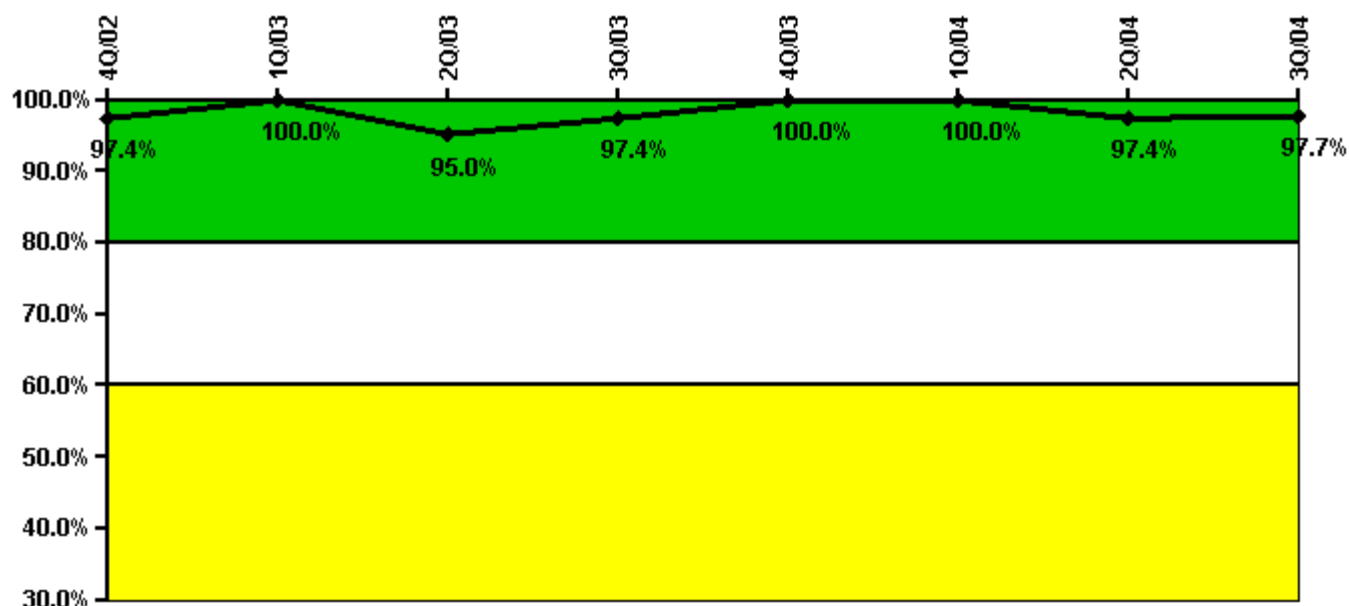
Thresholds: White < 90.0% Yellow < 70.0%

#### Notes

Drill/Exercise Performance	4Q/02	1Q/03	2Q/03	3Q/03	4Q/03	1Q/04	2Q/04	3Q/04
Successful opportunities	26.0	63.0	37.0	20.0	23.0	34.0	18.0	21.0
Total opportunities	28.0	73.0	40.0	20.0	25.0	36.0	20.0	23.0
Indicator value	96.1%	92.2%	91.4%	91.9%	91.9%	92.4%	91.9%	91.3%

Licensee Comments: none

### ERO Drill Participation



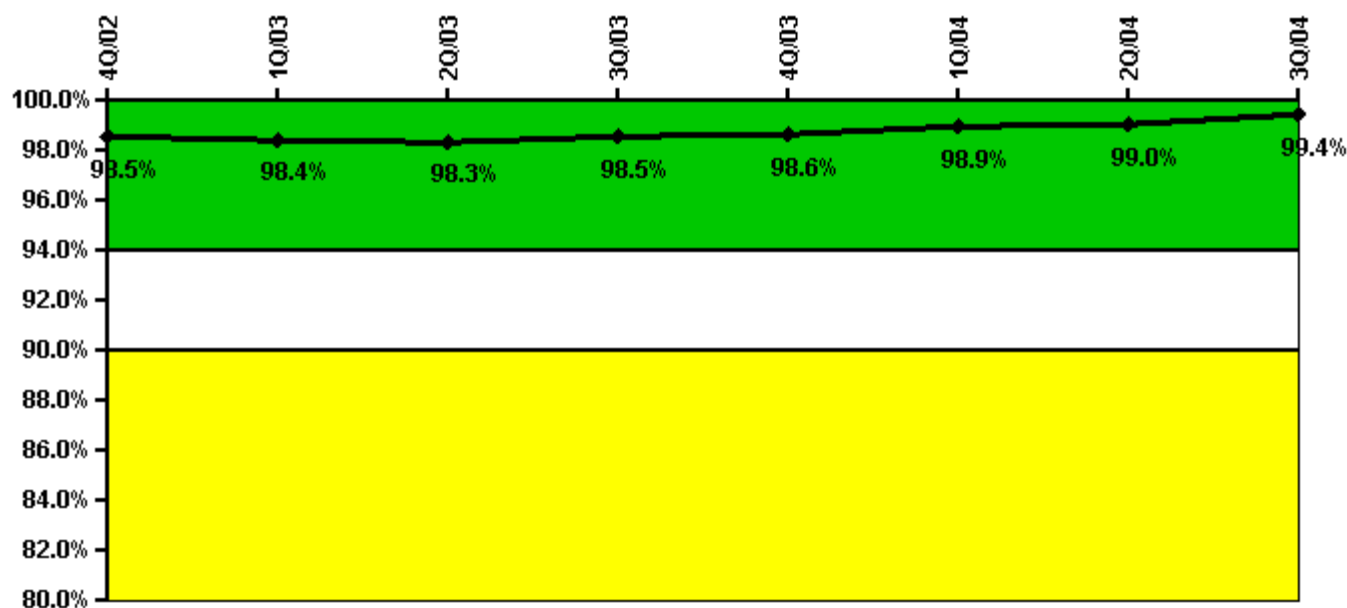
Thresholds: White < 80.0% Yellow < 60.0%

#### Notes

ERO Drill Participation	4Q/02	1Q/03	2Q/03	3Q/03	4Q/03	1Q/04	2Q/04	3Q/04
Participating Key personnel	38.0	37.0	38.0	38.0	36.0	36.0	38.0	42.0
Total Key personnel	39.0	37.0	40.0	39.0	36.0	36.0	39.0	43.0
Indicator value	97.4%	100.0%	95.0%	97.4%	100.0%	100.0%	97.4%	97.7%

Licensee Comments: none

### Alert & Notification System



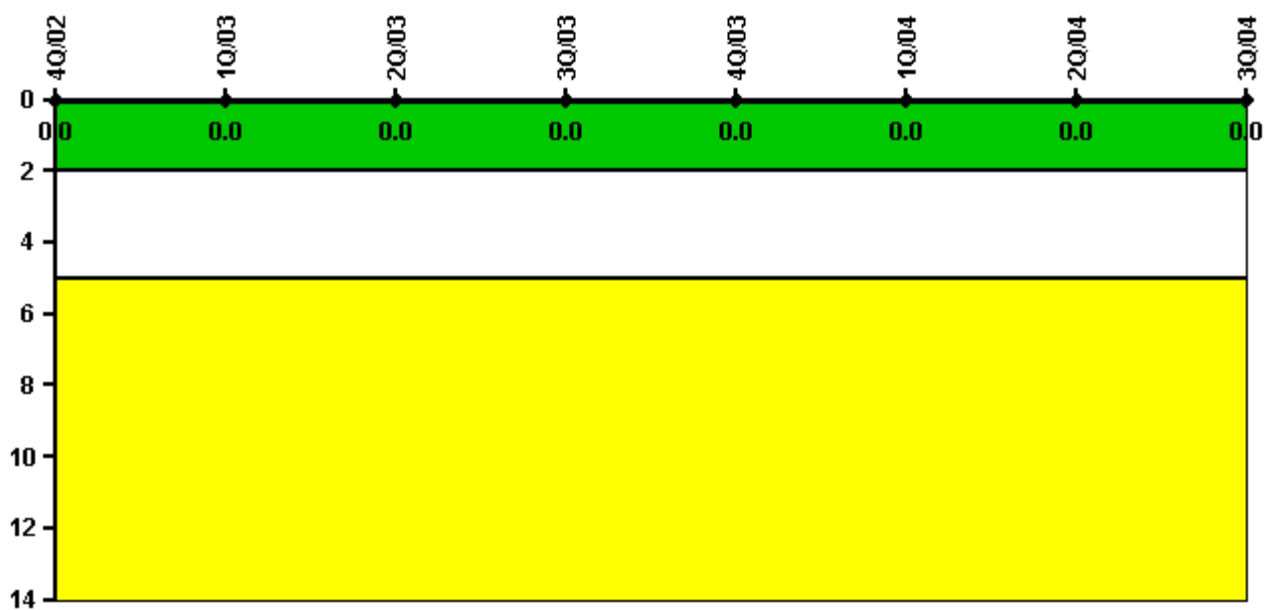
Thresholds: White < 94.0% Yellow < 90.0%

#### Notes

Alert & Notification System	4Q/02	1Q/03	2Q/03	3Q/03	4Q/03	1Q/04	2Q/04	3Q/04
Successful siren-tests	640	558	643	633	642	565	647	642
Total sirens-tests	648	567	648	648	648	567	648	648
Indicator value	98.5%	98.4%	98.3%	98.5%	98.6%	98.9%	99.0%	99.4%

Licensee Comments: none

### Occupational Exposure Control Effectiveness



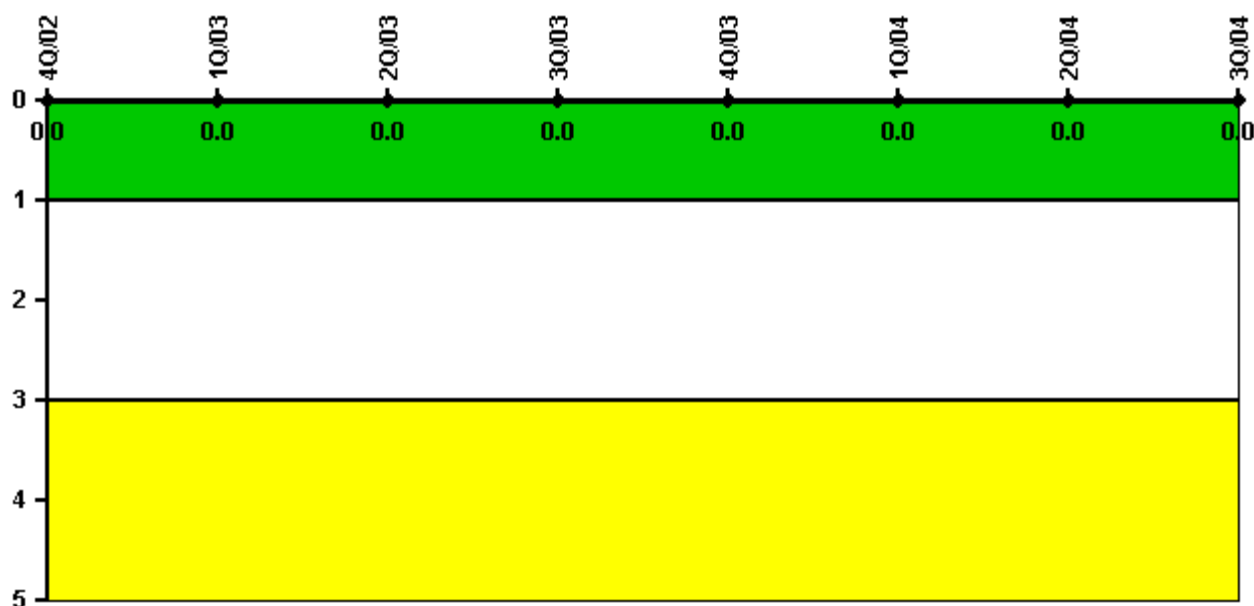
Thresholds: White > 2.0 Yellow > 5.0

**Notes**

Occupational Exposure Control Effectiveness	4Q/02	1Q/03	2Q/03	3Q/03	4Q/03	1Q/04	2Q/04	3Q/04
High radiation area occurrences	0	0	0	0	0	0	0	0
Very high radiation area occurrences	0	0	0	0	0	0	0	0
Unintended exposure occurrences	0	0	0	0	0	0	0	0
<b>Indicator value</b>	<b>0</b>	<b>0</b>	<b>0</b>	<b>0</b>	<b>0</b>	<b>0</b>	<b>0</b>	<b>0</b>

Licensee Comments: none

### RETS/ODCM Radiological Effluent



Thresholds: White > 1.0 Yellow > 3.0

#### Notes

RETS/ODCM Radiological Effluent	4Q/02	1Q/03	2Q/03	3Q/03	4Q/03	1Q/04	2Q/04	3Q/04
RETS/ODCM occurrences	0	0	0	0	0	0	0	0
Indicator value	0	0	0	0	0	0	0	0

Licensee Comments: none

[Physical Protection](#) information not publicly available.

▲ [Action Matrix Summary](#) | [Inspection Findings Summary](#) | [PI Summary](#) | [Reactor Oversight Process](#)

Last Modified: October 25, 2004