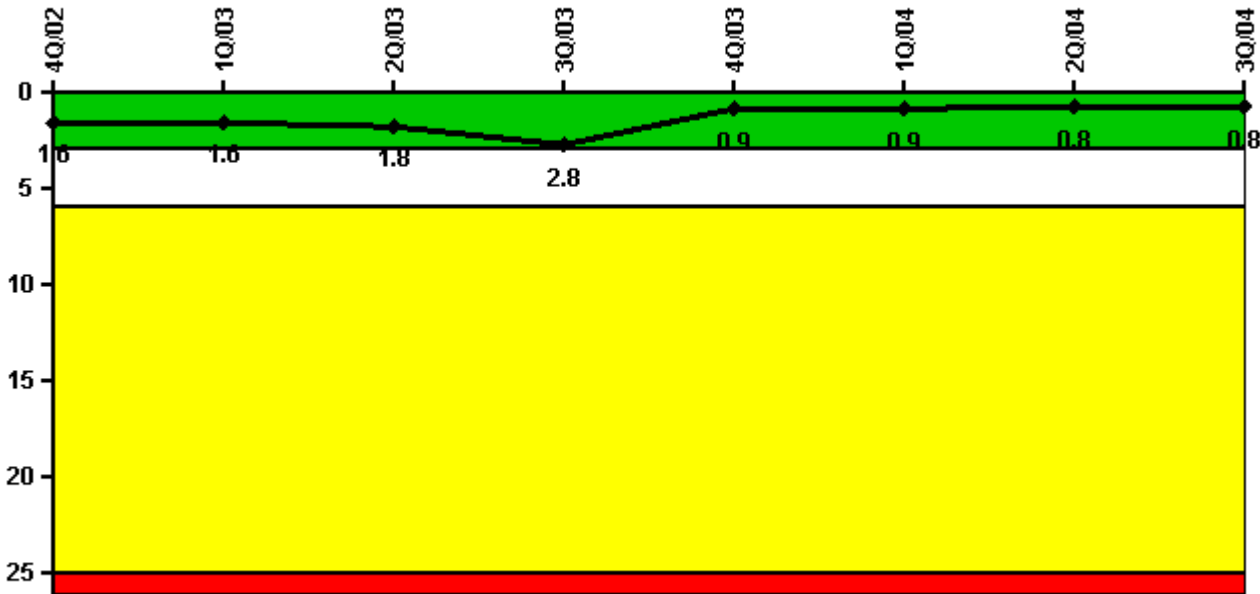


Fermi 2

3Q/2004 Performance Indicators

Licensee's General Comments: none

Unplanned Scrams per 7000 Critical Hrs



Thresholds: White > 3.0 Yellow > 6.0 Red > 25.0

Notes

Unplanned Scrams per 7000 Critical Hrs	4Q/02	1Q/03	2Q/03	3Q/03	4Q/03	1Q/04	2Q/04	3Q/04
Unplanned scrams	2.0	0	0	1.0	0	0	0	1.0
Critical hours	2094.9	2086.6	1307.5	2010.5	2209.0	2184.0	2183.0	1979.5
Indicator value	1.6	1.6	1.8	2.8	0.9	0.9	0.8	0.8

Licensee Comments:

3Q/04: Turbine trip and automatic reactor scram on 9/3/2004 at 2345 due to failure of main generator excitation automatic voltage regulator (AVR) system. Faulty AVR processor replaced.

Scrams with Loss of Normal Heat Removal



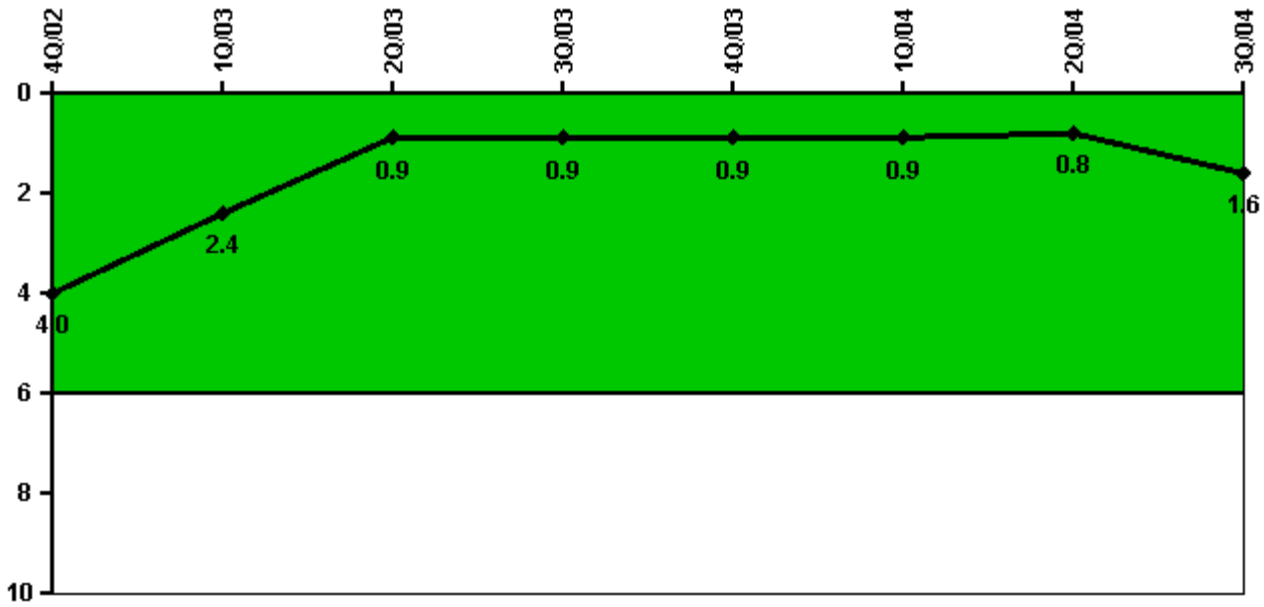
Thresholds: White > 2.0 Yellow > 10.0 Red > 20.0

Notes

Scrams with Loss of Normal Heat Removal	4Q/02	1Q/03	2Q/03	3Q/03	4Q/03	1Q/04	2Q/04	3Q/04
Scrams	0	0	0	0	0	0	0	0
Indicator value	0	0	0	0	0	0	0	0

Licensee Comments: none

Unplanned Power Changes per 7000 Critical Hrs



Thresholds: White > 6.0

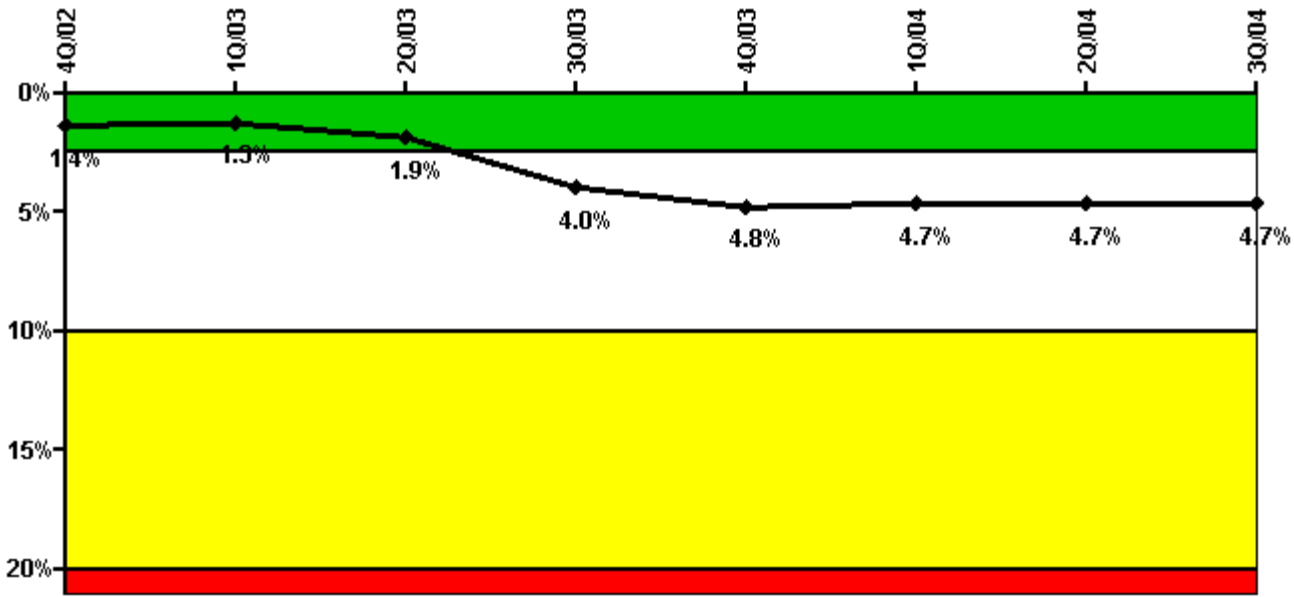
Notes

Unplanned Power Changes per 7000 Critical Hrs	4Q/02	1Q/03	2Q/03	3Q/03	4Q/03	1Q/04	2Q/04	3Q/04
Unplanned power changes	0	1.0	0	0	0	1.0	0	1.0
Critical hours	2094.9	2086.6	1307.5	2010.5	2209.0	2184.0	2183.0	1979.5
Indicator value	4.0	2.4	0.9	0.9	0.9	0.9	0.8	1.6

Licensee Comments:

3Q/04: Technical Specification required shutdown initiated 8/8/2004 at 2201 due to Emergency Diesel Generator 12 scavenging air blower failure. Shutdown was by normal plant procedures. Less than 72 hours elapsed from initiating condition to start of downpower.

Safety System Unavailability, Emergency AC Power, >2EDG



Thresholds: White > 2.5% Yellow > 10.0% Red > 20.0%

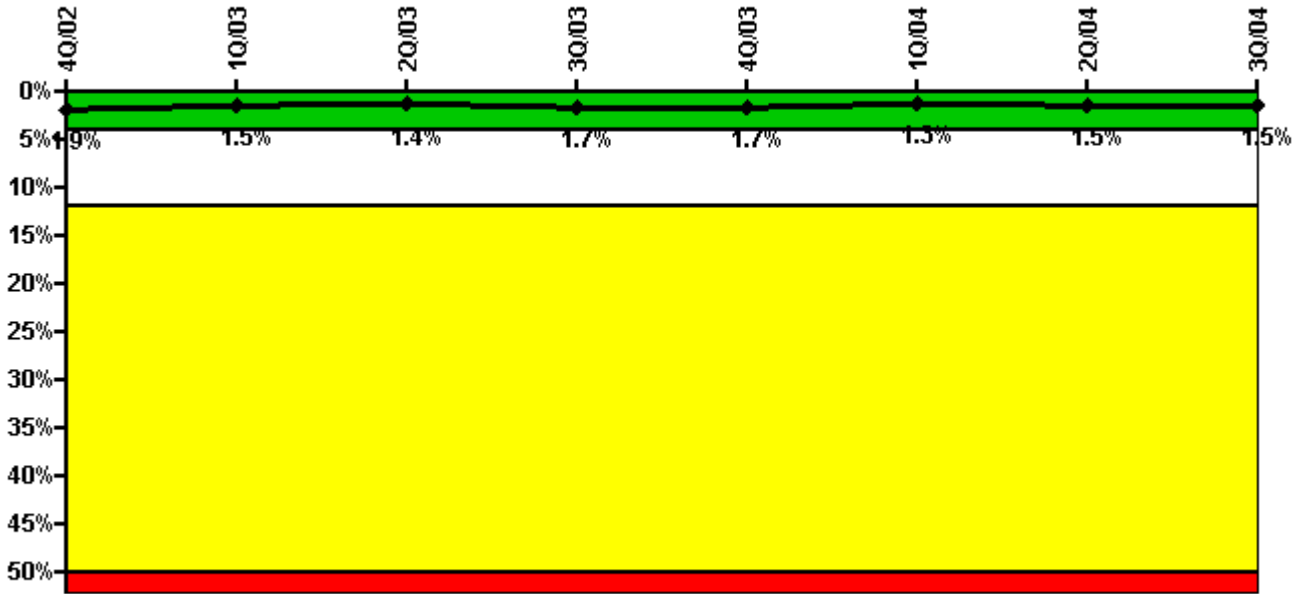
Notes

Safety System Unavailability, Emergency AC Power, >2EDG	4Q/02	1Q/03	2Q/03	3Q/03	4Q/03	1Q/04	2Q/04	3Q/04
Train 1								
Planned unavailable hours	7.04	38.03	8.15	28.15	9.52	10.00	6.70	49.67
Unplanned unavailable hours	0	29.82	0	0	0	0	1.27	0
Fault exposure hours	0	0	0	0	0	0	0	0
Effective Reset hours	0	0	0	0	0	0	0	0
Required hours	2209.00	2160.00	2183.00	2208.00	2209.00	2184.00	2183.00	2208.00
Train 2								
Planned unavailable hours	16.53	17.09	2.13	0	11.47	71.86	4.76	38.87
Unplanned unavailable hours	26.40	0	0	0	0	0	0	86.65
Fault exposure hours	0	0	694.00	2208.00	928.93	0	0	0
Effective Reset hours	0	0	0	0	0	0	0	0
Required hours	2209.00	2160.00	2183.00	2208.00	2209.00	2184.00	2183.00	2208.00
Train 3								
Planned unavailable hours	6.95	26.45	3.55	6.09	17.49	8.03	4.84	43.10
Unplanned unavailable hours	0	0	2.03	0	0	0	0	7.12
Fault exposure hours	0	0	0	0	0	0	0	2.72
Effective Reset hours	0	0	0	0	0	0	0	0
Required hours	2209.00	2160.00	2183.00	2208.00	2209.00	2184.00	2183.00	2208.00
Train 4								
Planned unavailable hours	7.74	24.71	8.61	8.17	5.63	13.07	5.91	35.88
Unplanned unavailable hours	0	0	0	0	0	0	0	7.13
Fault exposure hours	0	0	0	0	0	0	0	2.72
Effective Reset hours	0	0	0	0	0	0	0	0
Required hours	2209.00	2160.00	2183.00	2208.00	2209.00	2184.00	2183.00	2208.00
Indicator value	1.4%	1.3%	1.9%	4.0%	4.8%	4.7%	4.7%	4.7%

Licensee Comments:

3Q/04: 2004-08: For Emergency Diesel Generator #12's scavenging air blower failure, 385.3 T/2 fault exposure hours were assessed between the last successful surveillance test and the time of EDG shutdown after the blower failure on 8/6/04 @ 1311. 2004-09: For the failure of the Digital Load Sequencer reset pushbutton switch, fault exposure hours were assessed against Trains 3 and 4 from 9/17/04 @ 1121 to 9/17/04 @ 1404. Fault initiation time was identified from an alarm recorder report.

Safety System Unavailability, High Pressure Injection System (HPCI)



Thresholds: White > 4.0% Yellow > 12.0% Red > 50.0%

Notes

Safety System Unavailability, High Pressure Injection System (HPCI)	4Q/02	1Q/03	2Q/03	3Q/03	4Q/03	1Q/04	2Q/04	3Q/04
Train 1								
Planned unavailable hours	2.20	26.08	0	66.32	3.18	1.37	73.04	1.92
Unplanned unavailable hours	0	0	0	3.30	0	0	20.77	0
Fault exposure hours	0	0	0	0	0	0	0	0
Effective Reset hours	0	0	0	0	0	0	0	0
Required hours	2094.90	2086.60	1307.50	2010.50	2209.00	2184.00	2183.00	1979.47
Indicator value	1.9%	1.5%	1.4%	1.7%	1.7%	1.3%	1.5%	1.5%

Licensee Comments: none

Safety System Unavailability, Heat Removal System (RCIC)



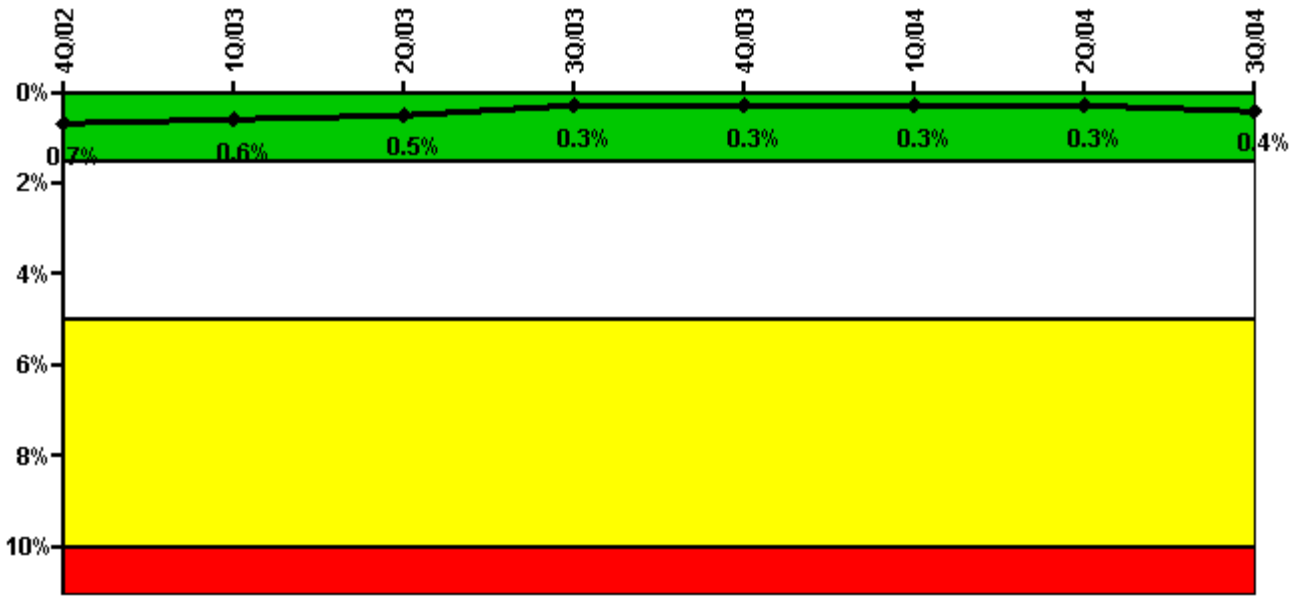
Thresholds: White > 4.0% Yellow > 12.0% Red > 50.0%

Notes

Safety System Unavailability, Heat Removal System (RCIC)	4Q/02	1Q/03	2Q/03	3Q/03	4Q/03	1Q/04	2Q/04	3Q/04
Train 1								
Planned unavailable hours	127.80	14.21	57.48	7.98	2.52	55.16	1.48	25.41
Unplanned unavailable hours	0	0	0	0	2.92	0	0	12.77
Fault exposure hours	0	0	0	0	0	0	0	0
Effective Reset hours	0	0	0	0	0	0	0	0
Required hours	2094.90	2086.60	1307.50	2010.50	2209.00	2184.00	2183.00	1979.47
Indicator value	2.0%	1.9%	2.1%	2.1%	2.1%	2.3%	2.0%	2.2%

Licensee Comments: none

Safety System Unavailability, Residual Heat Removal System



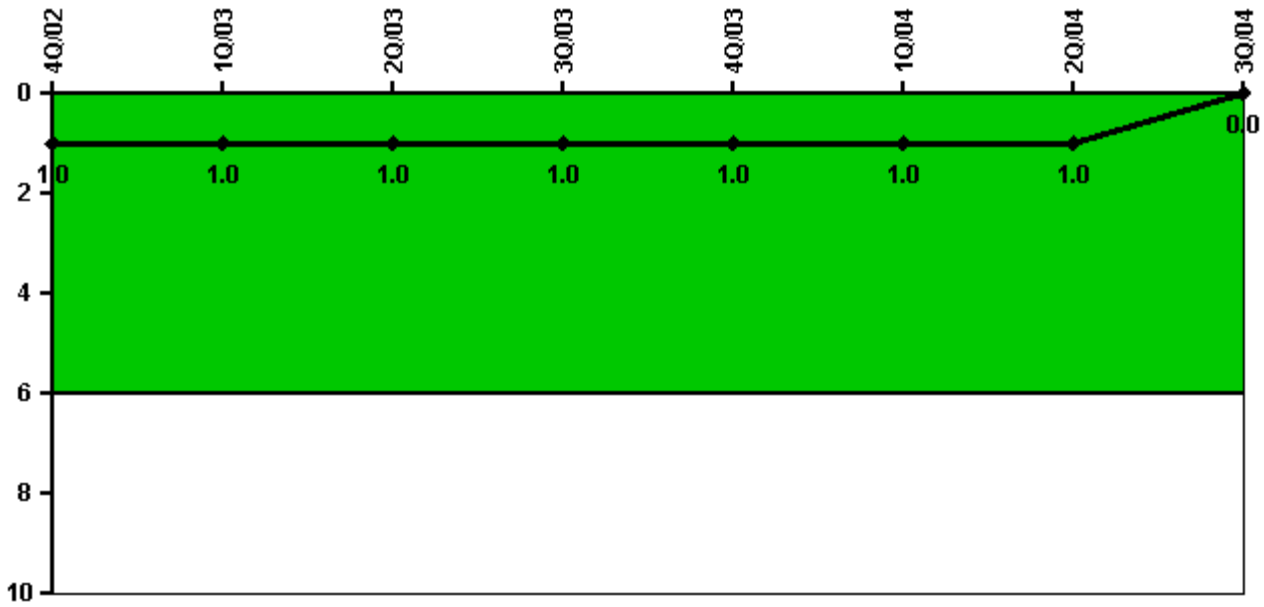
Thresholds: White > 1.5% Yellow > 5.0% Red > 10.0%

Notes

Safety System Unavailability, Residual Heat Removal System	4Q/02	1Q/03	2Q/03	3Q/03	4Q/03	1Q/04	2Q/04	3Q/04
Train 1								
Planned unavailable hours	3.13	0.88	0	13.76	0.62	1.42	0.72	73.77
Unplanned unavailable hours	0	0	0.65	0	0.15	0	0	14.27
Fault exposure hours	0	0	0	0	0	0	0	0
Effective Reset hours	0	0	0	0	0	0	0	0
Required hours	2209.00	2160.00	2183.00	2208.00	2209.00	2184.00	2183.00	2208.00
Train 2								
Planned unavailable hours	1.50	9.05	0	8.85	1.70	1.10	2.27	22.22
Unplanned unavailable hours	0	0	0	0	0	0	0	0
Fault exposure hours	0	0	0	0	0	0	0	0
Effective Reset hours	0	0	0	0	0	0	0	0
Required hours	2209.00	2160.00	2183.00	2208.00	2209.00	2184.00	2183.00	2208.00
Indicator value	0.7%	0.6%	0.5%	0.3%	0.3%	0.3%	0.3%	0.4%

Licensee Comments: none

Safety System Functional Failures (BWR)



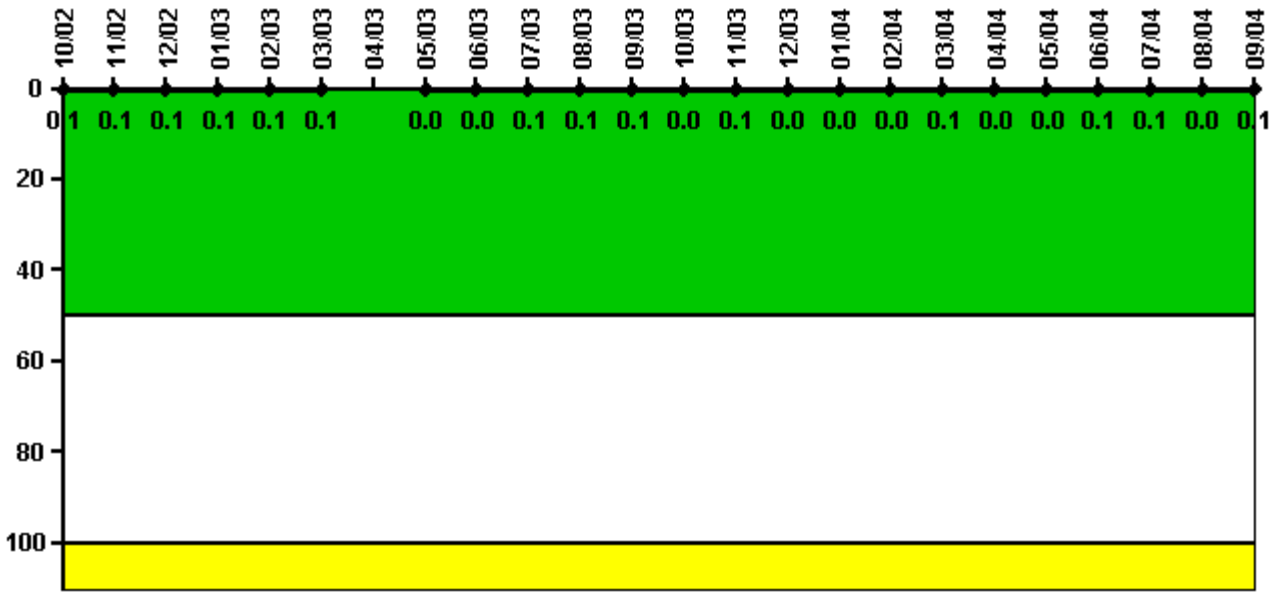
Thresholds: White > 6.0

Notes

Safety System Functional Failures (BWR)	4Q/02	1Q/03	2Q/03	3Q/03	4Q/03	1Q/04	2Q/04	3Q/04
Safety System Functional Failures	0	0	0	1	0	0	0	0
Indicator value	1	1	1	1	1	1	1	0

Licensee Comments: none

Reactor Coolant System Activity



Thresholds: White > 50.0 Yellow > 100.0

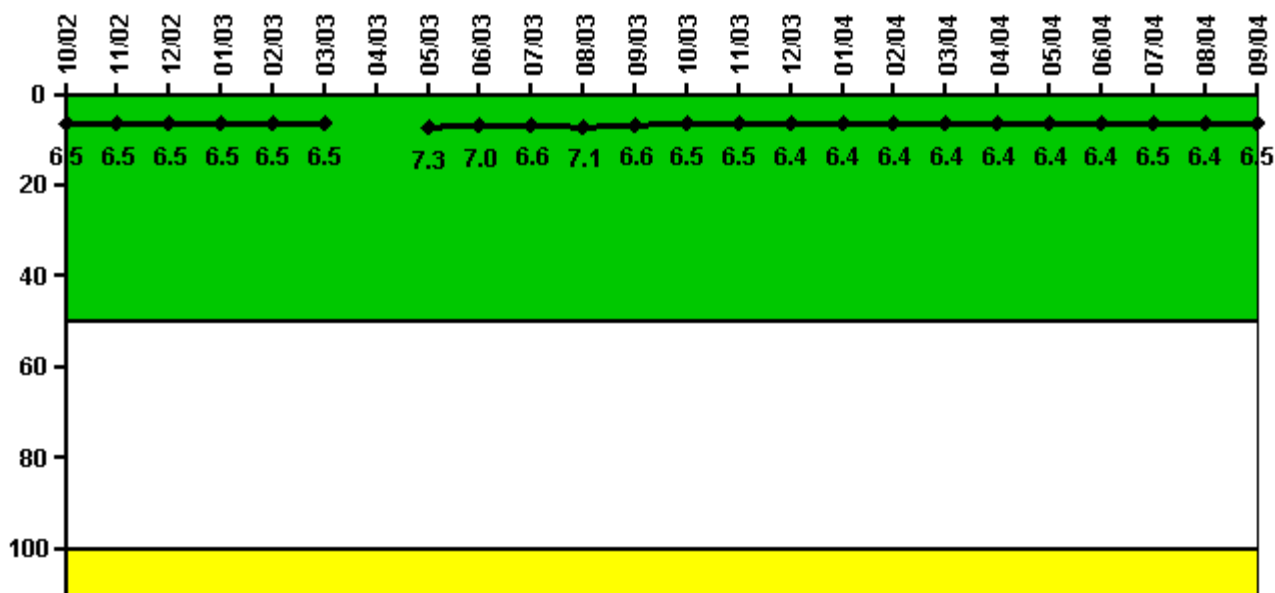
Notes

Reactor Coolant System Activity	10/02	11/02	12/02	1/03	2/03	3/03	4/03	5/03	6/03	7/03	8/03	9/03
Maximum activity	0.000173	0.000211	0.000169	0.000144	0.000178	0.000168	N/A	0.000080	0.000084	0.000123	0.000124	0.000135
Technical specification limit	0.2	0.2	0.2	0.2	0.2	0.2	0.2	0.2	0.2	0.2	0.2	0.2
Indicator value	0.1	0.1	0.1	0.1	0.1	0.1	N/A	0	0	0.1	0.1	0.1

Reactor Coolant System Activity	10/03	11/03	12/03	1/04	2/04	3/04	4/04	5/04	6/04	7/04	8/04	9/04
Maximum activity	0.000092	0.000129	0.000094	0.000089	0.000094	0.000114	0.000080	0.000076	0.000125	0.000107	0.000071	0.000120
Technical specification limit	0.2	0.2	0.2	0.2	0.2	0.2	0.2	0.2	0.2	0.2	0.2	0.2
Indicator value	0	0.1	0	0	0	0.1	0	0	0.1	0.1	0	0.1

Licensee Comments: none

Reactor Coolant System Leakage



Thresholds: White > 50.0 Yellow > 100.0

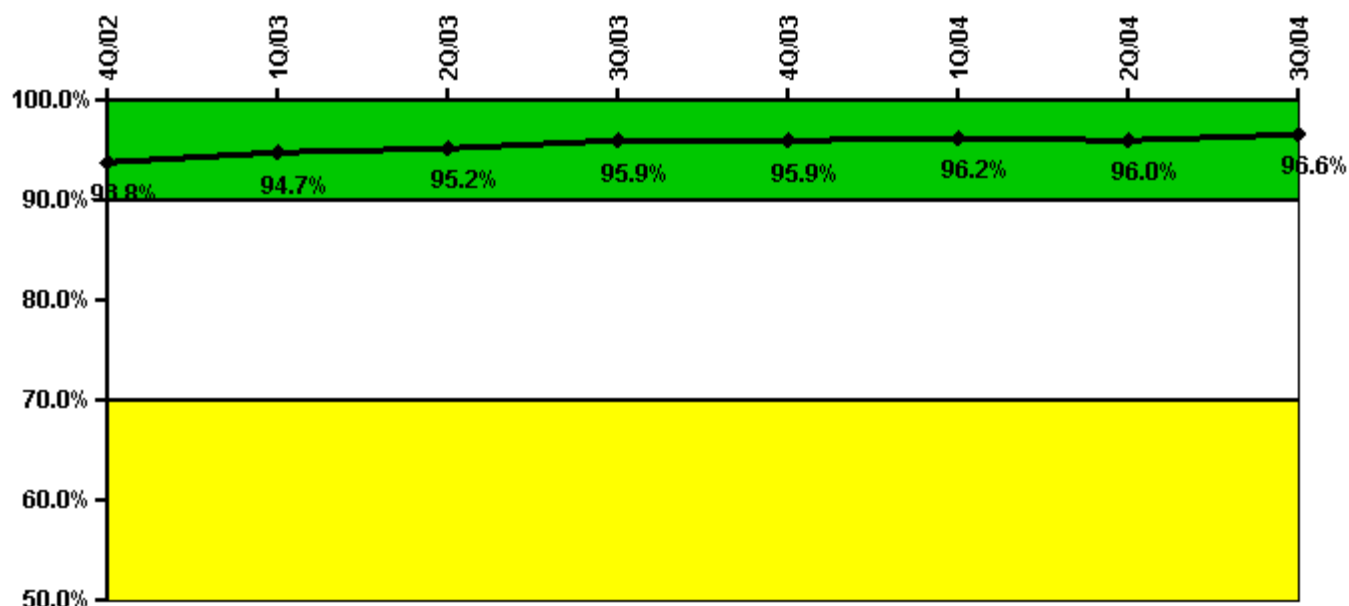
Notes

Reactor Coolant System Leakage	10/02	11/02	12/02	1/03	2/03	3/03	4/03	5/03	6/03	7/03	8/03	9/03
Maximum leakage	1.630	1.620	1.620	1.630	1.630	1.630	N/A	1.830	1.750	1.640	1.770	1.650
Technical specification limit	25.0	25.0	25.0	25.0	25.0	25.0	25.0	25.0	25.0	25.0	25.0	25.0
Indicator value	6.5	6.5	6.5	6.5	6.5	6.5	N/A	7.3	7.0	6.6	7.1	6.6

Reactor Coolant System Leakage	10/03	11/03	12/03	1/04	2/04	3/04	4/04	5/04	6/04	7/04	8/04	9/04
Maximum leakage	1.620	1.620	1.610	1.610	1.600	1.610	1.600	1.610	1.610	1.620	1.610	1.620
Technical specification limit	25.0	25.0	25.0	25.0	25.0	25.0	25.0	25.0	25.0	25.0	25.0	25.0
Indicator value	6.5	6.5	6.4	6.4	6.4	6.4	6.4	6.4	6.4	6.5	6.4	6.5

Licensee Comments: none

Drill/Exercise Performance



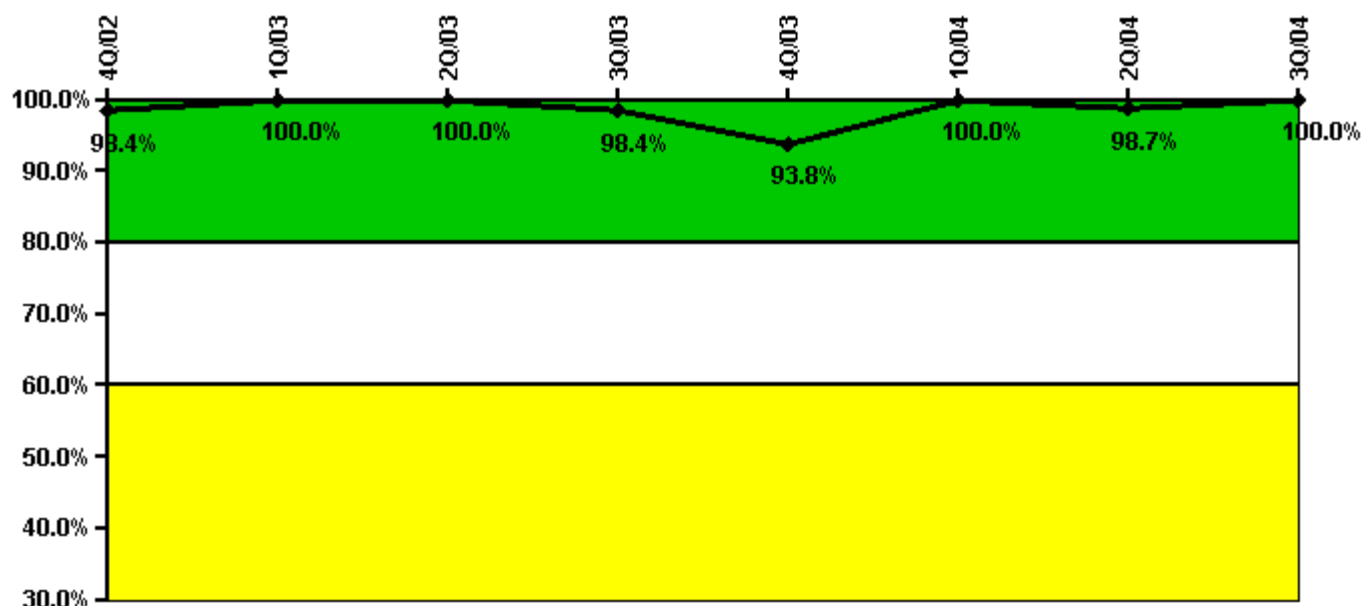
Thresholds: White < 90.0% Yellow < 70.0%

Notes

Drill/Exercise Performance	4Q/02	1Q/03	2Q/03	3Q/03	4Q/03	1Q/04	2Q/04	3Q/04
Successful opportunities	10.0	64.0	28.0	149.0	0	54.0	52.0	15.0
Total opportunities	10.0	65.0	28.0	156.0	0	57.0	53.0	16.0
Indicator value	93.8%	94.7%	95.2%	95.9%	95.9%	96.2%	96.0%	96.6%

Licensee Comments: none

ERO Drill Participation



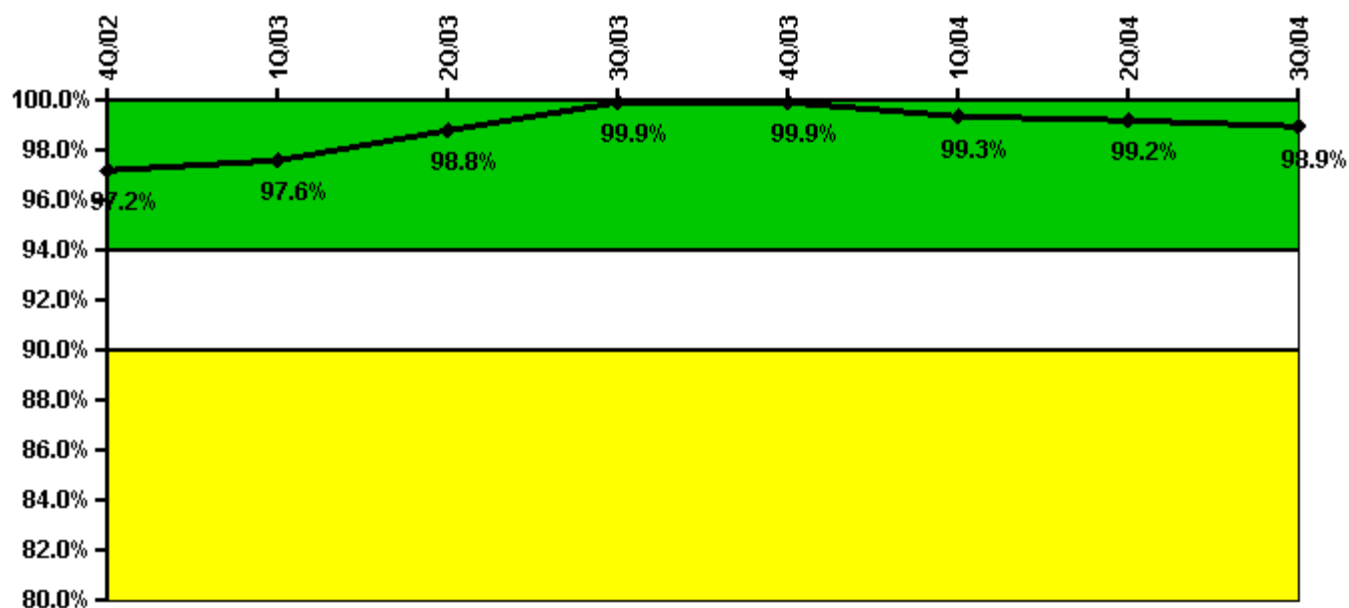
Thresholds: White < 80.0% Yellow < 60.0%

Notes

ERO Drill Participation	4Q/02	1Q/03	2Q/03	3Q/03	4Q/03	1Q/04	2Q/04	3Q/04
Participating Key personnel	60.0	60.0	60.0	63.0	61.0	78.0	76.0	82.0
Total Key personnel	61.0	60.0	60.0	64.0	65.0	78.0	77.0	82.0
Indicator value	98.4%	100.0%	100.0%	98.4%	93.8%	100.0%	98.7%	100.0%

Licensee Comments: none

Alert & Notification System



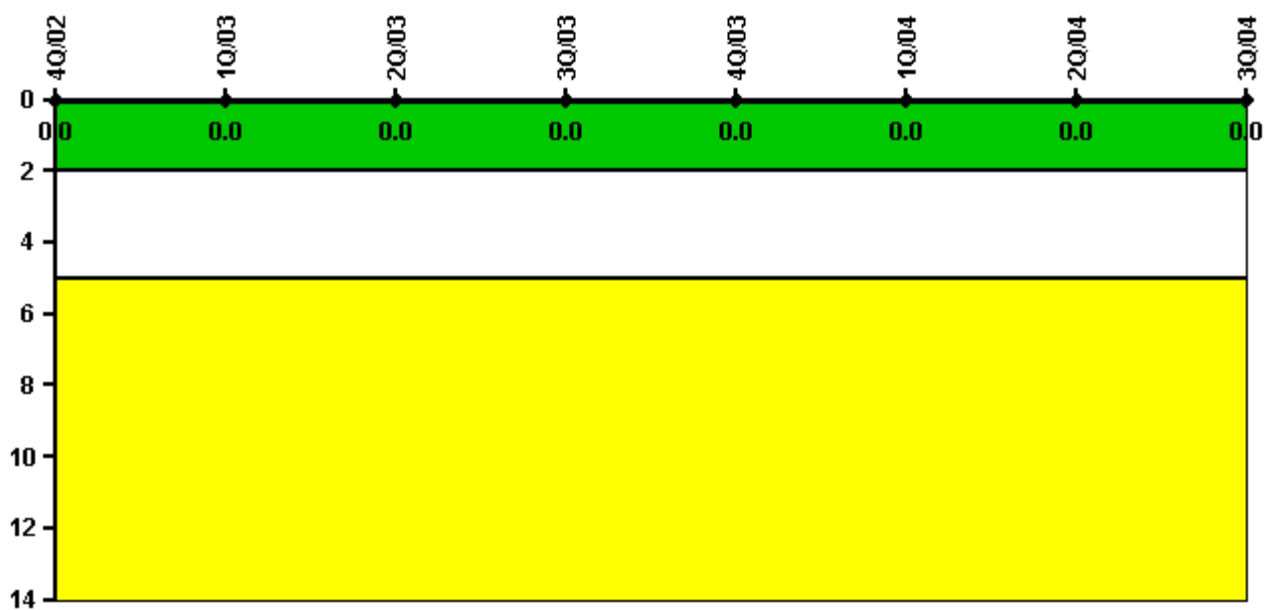
Thresholds: White < 94.0% Yellow < 90.0%

Notes

Alert & Notification System	4Q/02	1Q/03	2Q/03	3Q/03	4Q/03	1Q/04	2Q/04	3Q/04
Successful siren-tests	181	185	186	186	186	181	185	184
Total sirens-tests	181	186	186	186	186	186	186	186
Indicator value	97.2%	97.6%	98.8%	99.9%	99.9%	99.3%	99.2%	98.9%

Licensee Comments: none

Occupational Exposure Control Effectiveness



Thresholds: White > 2.0 Yellow > 5.0

Notes

Occupational Exposure Control Effectiveness	4Q/02	1Q/03	2Q/03	3Q/03	4Q/03	1Q/04	2Q/04	3Q/04
High radiation area occurrences	0	0	0	0	0	0	0	0
Very high radiation area occurrences	0	0	0	0	0	0	0	0
Unintended exposure occurrences	0	0	0	0	0	0	0	0
Indicator value	0	0	0	0	0	0	0	0

Licensee Comments: none

RETS/ODCM Radiological Effluent



Thresholds: White > 1.0 Yellow > 3.0

Notes

RETS/ODCM Radiological Effluent	4Q/02	1Q/03	2Q/03	3Q/03	4Q/03	1Q/04	2Q/04	3Q/04
RETS/ODCM occurrences	0	0	0	0	0	0	0	0
Indicator value	0	0	0	0	0	0	0	0

Licensee Comments: none

[Physical Protection](#) information not publicly available.