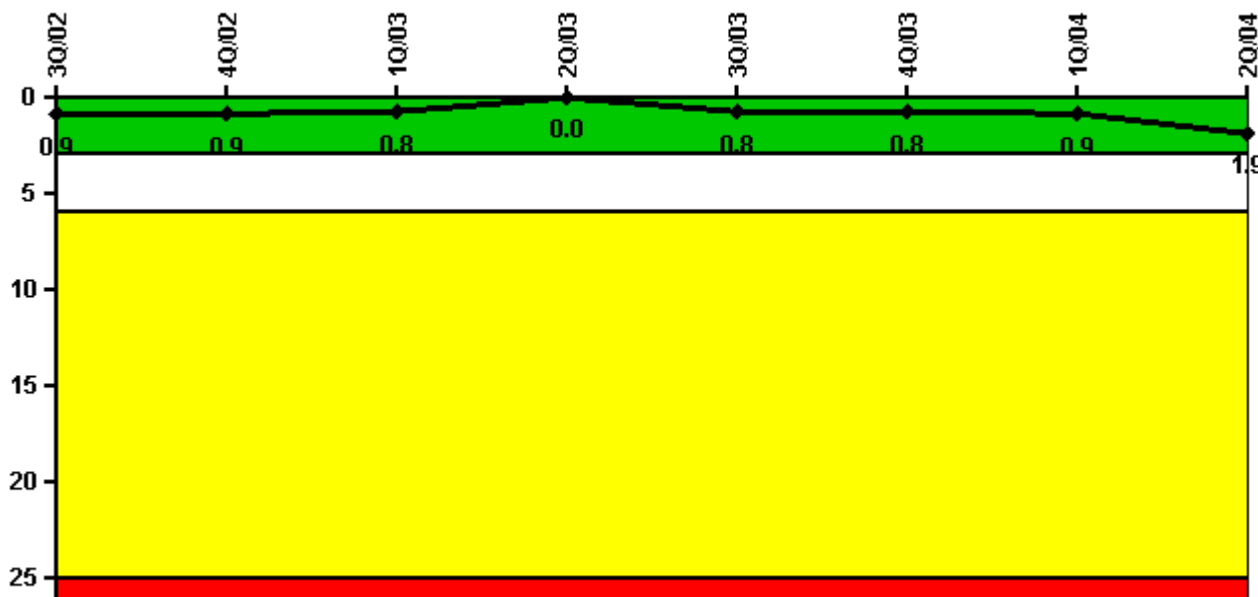


Susquehanna 1

2Q/2004 Performance Indicators

Licensee's General Comments: none

Unplanned Scrams per 7000 Critical Hrs



Thresholds: White > 3.0 Yellow > 6.0 Red > 25.0

Notes

Unplanned Scrams per 7000 Critical Hrs	3Q/02	4Q/02	1Q/03	2Q/03	3Q/03	4Q/03	1Q/04	2Q/04
Unplanned scrams	0	0	0	0	1.0	0	0	1.0
Critical hours	2208.0	2209.0	2160.0	2183.0	2068.3	2209.0	1393.4	1692.8
Indicator value	0.9	0.9	0.8	0	0.8	0.8	0.9	1.9

Licensee Comments:

2Q/04: The April 2004 Scram occurred during startup following the Unit 1 Turbine Replacement outage. This Scram is being reviewed by the NRC for consideration as a Scram with Loss of Normal Heat Removal. The final determination of this Scram will be based on the outcome of NRC review of a similar event that is currently being tracked in the Reactor Oversight Process as a Frequently Asked Question.

Scrams with Loss of Normal Heat Removal



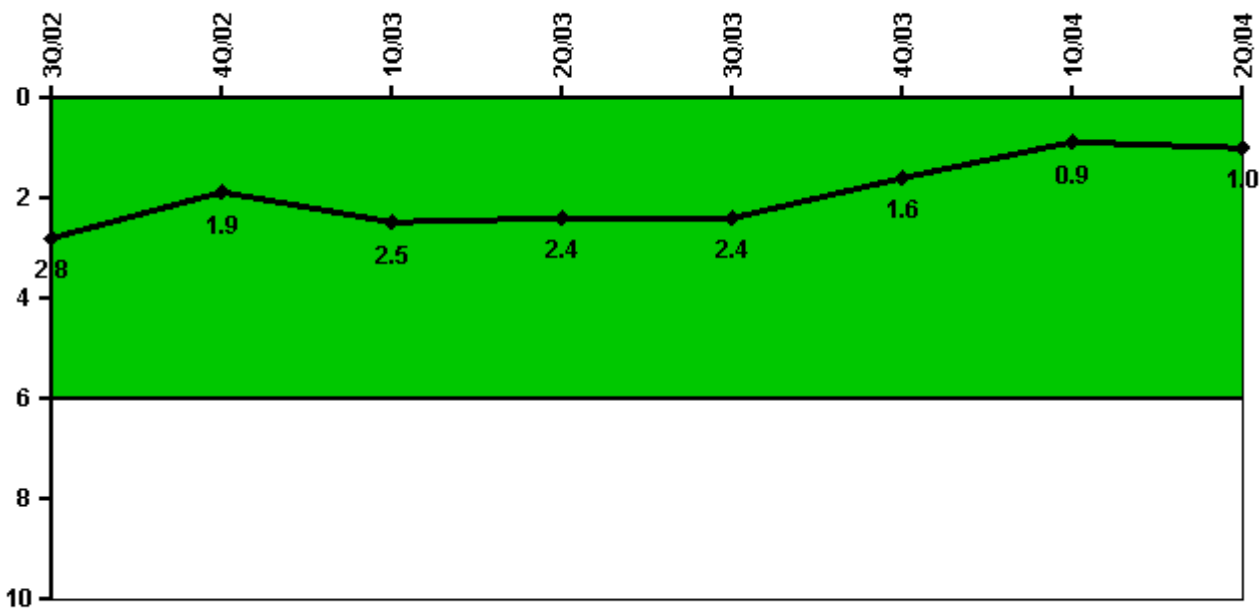
Thresholds: White > 2.0 Yellow > 10.0 Red > 20.0

Notes

Scrams with Loss of Normal Heat Removal	3Q/02	4Q/02	1Q/03	2Q/03	3Q/03	4Q/03	1Q/04	2Q/04
Scrams	0	0	0	0	0	0	0	0
Indicator value	0	0	0	0	0	0	0	0

Licensee Comments: none

Unplanned Power Changes per 7000 Critical Hrs



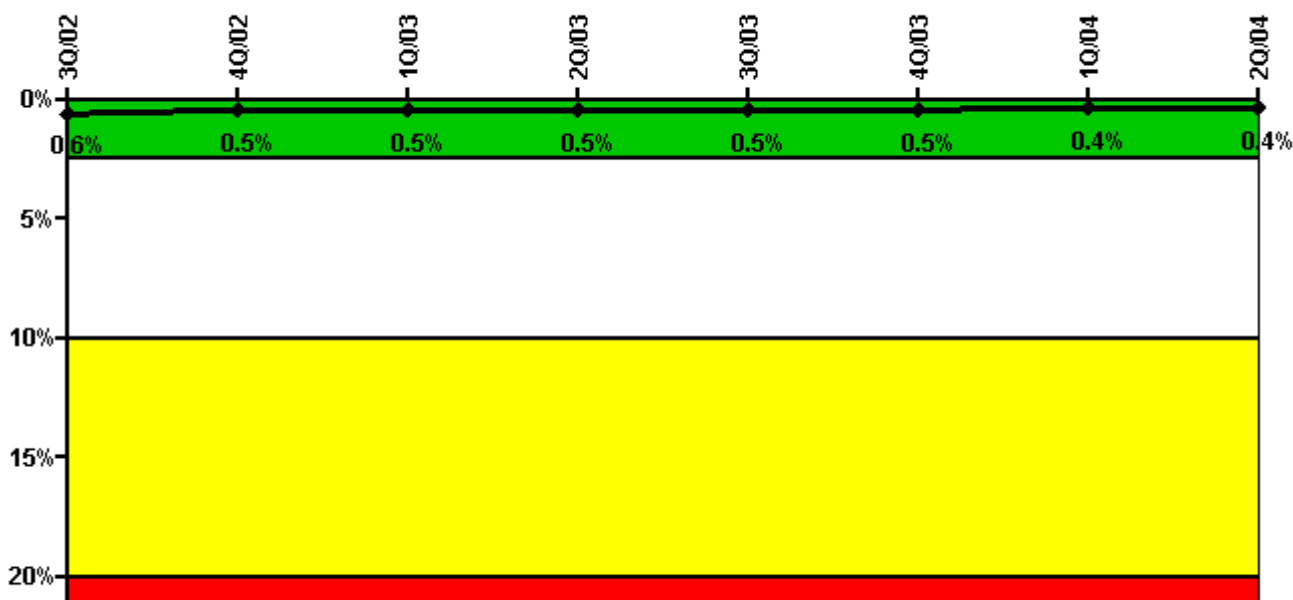
Thresholds: White > 6.0

Notes

Unplanned Power Changes per 7000 Critical Hrs	3Q/02	4Q/02	1Q/03	2Q/03	3Q/03	4Q/03	1Q/04	2Q/04
Unplanned power changes	1.0	1.0	1.0	0	1.0	0	0	0
Critical hours	2208.0	2209.0	2160.0	2183.0	2068.3	2209.0	1393.4	1692.8
Indicator value	2.8	1.9	2.5	2.4	2.4	1.6	0.9	1.0

Licensee Comments: none

Safety System Unavailability, Emergency AC Power, >2EDG

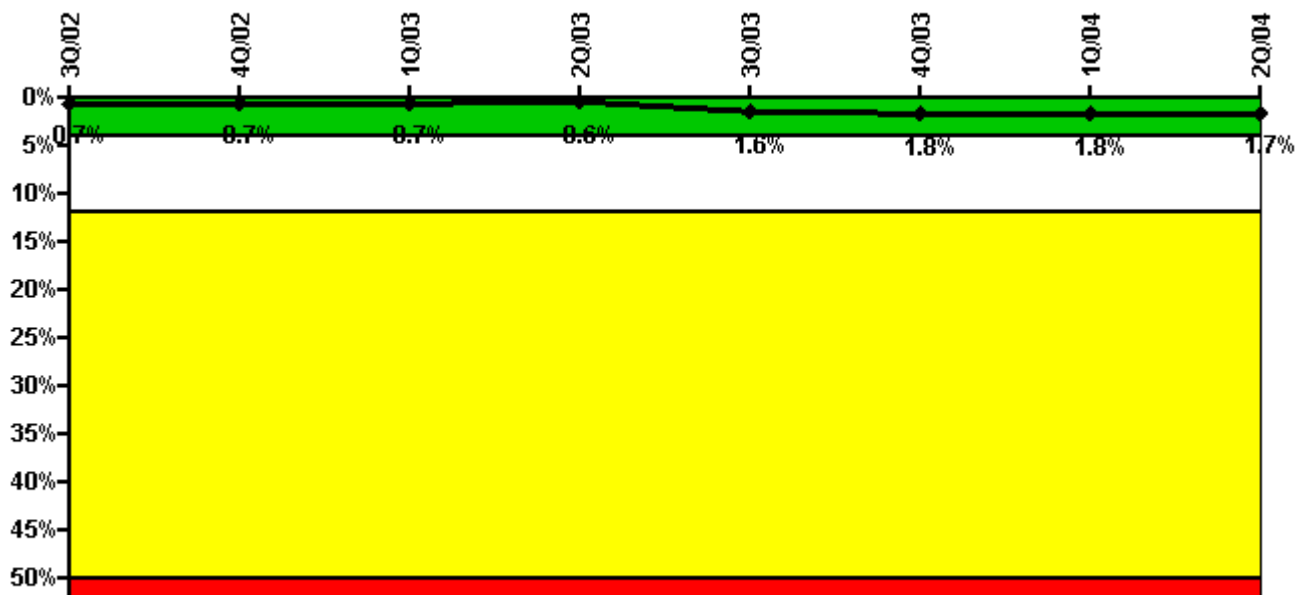


Thresholds: White > 2.5% Yellow > 10.0% Red > 20.0%

Notes

Safety System Unavailability, Emergency AC Power, >2EDG	3Q/02	4Q/02	1Q/03	2Q/03	3Q/03	4Q/03	1Q/04	2Q/04
Train 1								
Planned unavailable hours	1.90	0	0	7.90	37.30	0	6.30	1.20
Unplanned unavailable hours	0	9.10	1.70	12.80	0	0	7.20	0
Fault exposure hours	0	0	0	0	0	0	0	0
Effective Reset hours	0	0	0	0	0	0	0	0
Required hours	2208.00	2208.00	2160.00	2184.00	2208.00	2208.00	2184.00	2184.00
Train 2								
Planned unavailable hours	0	7.60	84.00	0	0	0.90	0.80	1.10
Unplanned unavailable hours	2.30	0	0.40	0	0	0	0	0
Fault exposure hours	0	0	0	0	0	0	0	0
Effective Reset hours	0	0	0	0	0	0	0	0
Required hours	2208.00	2208.00	2160.00	2184.00	2208.00	2208.00	2184.00	2184.00
Train 3								
Planned unavailable hours	0	0	0	2.40	0	0.60	0.70	0.60
Unplanned unavailable hours	0	0	0	25.00	6.80	0	0	25.60
Fault exposure hours	0	0	0	0	0	0	0	0
Effective Reset hours	0	0	0	0	0	0	0	0
Required hours	2208.00	2208.00	2160.00	2184.00	2208.00	2208.00	2184.00	2184.00
Train 4								
Planned unavailable hours	0	0	0.70	0	0	0.70	2.00	32.00
Unplanned unavailable hours	0	0	0.80	0	6.80	0	0	2.90
Fault exposure hours	0	0	0	0	0	0	0	0
Effective Reset hours	0	0	0	0	0	0	0	0
Required hours	2208.00	2208.00	2160.00	2184.00	2208.00	2208.00	2184.00	2184.00
Indicator value	0.6%	0.5%	0.5%	0.5%	0.5%	0.5%	0.4%	0.4%

Safety System Unavailability, High Pressure Injection System (HPCI)



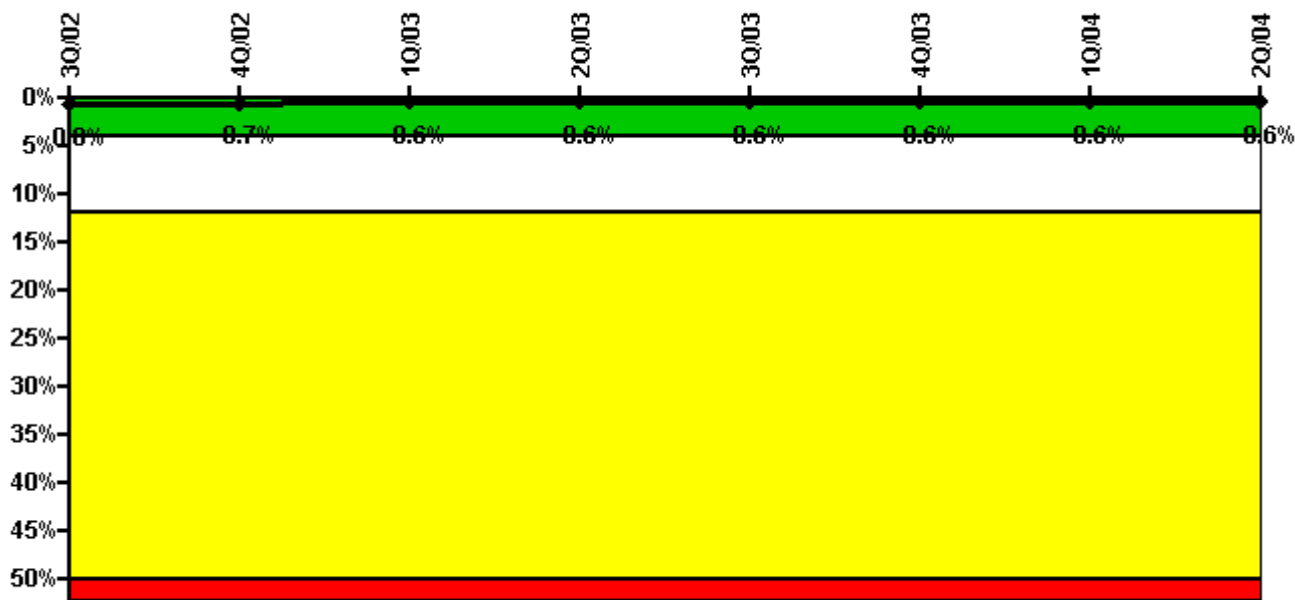
Thresholds: White > 4.0% Yellow > 12.0% Red > 50.0%

Notes

Safety System Unavailability, High Pressure Injection System (HPCI)	3Q/02	4Q/02	1Q/03	2Q/03	3Q/03	4Q/03	1Q/04	2Q/04
Train 1								
Planned unavailable hours	42.42	1.53	1.47	1.25	2.00	48.73	0	3.45
Unplanned unavailable hours	0	0	0	0	260.00	0	0	0
Fault exposure hours	0	0	0	0	0	0	0	0
Effective Reset hours	0	0	0	0	0	0	0	0
Required hours	2208.00	2208.00	2160.00	2184.00	2121.00	2208.00	1395.50	1704.40
Indicator value	0.7%	0.7%	0.7%	0.6%	1.6%	1.8%	1.8%	1.7%

Licensee Comments: none

Safety System Unavailability, Heat Removal System (RCIC)



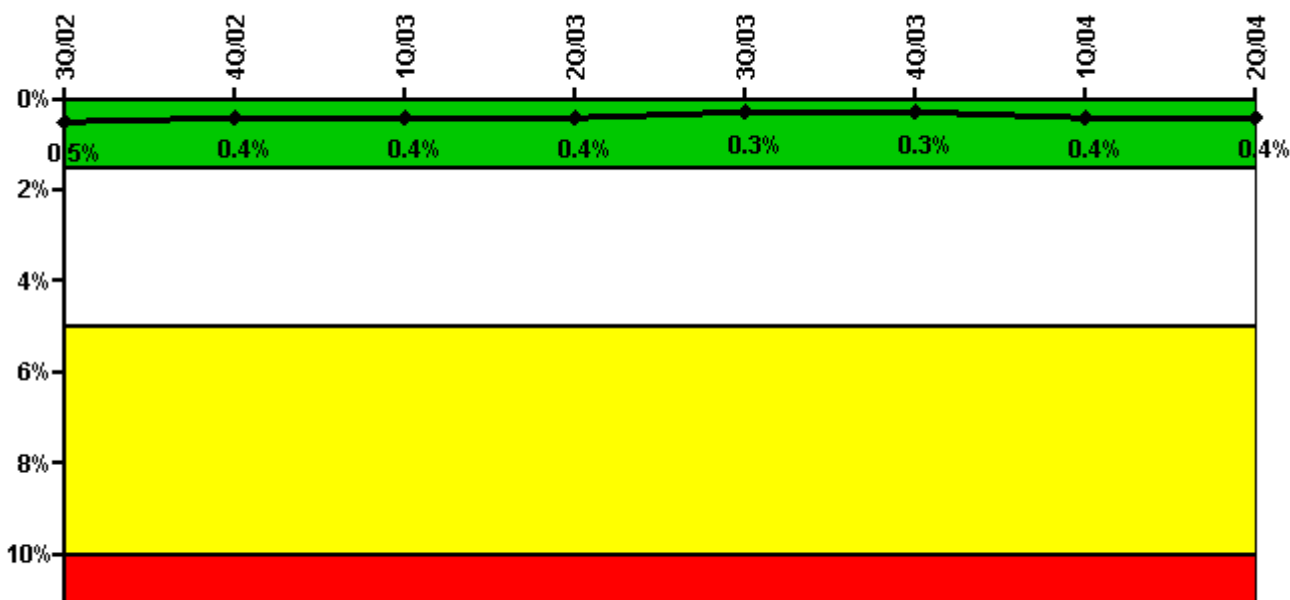
Thresholds: White > 4.0% Yellow > 12.0% Red > 50.0%

Notes

Safety System Unavailability, Heat Removal System (RCIC)	3Q/02	4Q/02	1Q/03	2Q/03	3Q/03	4Q/03	1Q/04	2Q/04
Train 1								
Planned unavailable hours	53.58	33.92	0.50	0.50	0.50	23.08	0.50	1.00
Unplanned unavailable hours	0	0	0	0	0	0	0	0
Fault exposure hours	0	0	0	0	0	0	0	0
Effective Reset hours	0	0	0	0	0	0	0	0
Required hours	2208.00	2208.00	2160.00	2184.00	2121.50	2208.00	1395.50	1704.40
Indicator value	0.8%	0.7%	0.6%	0.6%	0.6%	0.6%	0.6%	0.6%

Licensee Comments: none

Safety System Unavailability, Residual Heat Removal System



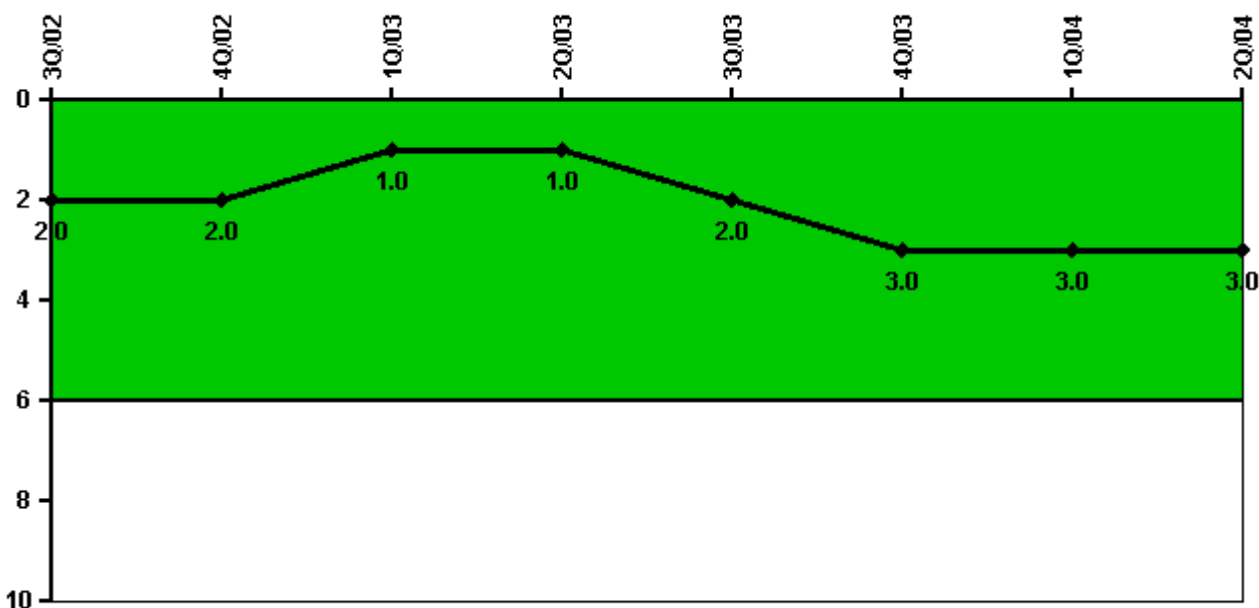
Thresholds: White > 1.5% Yellow > 5.0% Red > 10.0%

Notes

Safety System Unavailability, Residual Heat Removal System	3Q/02	4Q/02	1Q/03	2Q/03	3Q/03	4Q/03	1Q/04	2Q/04
Train 1								
Planned unavailable hours	5.38	8.40	0	10.36	0	34.33	5.98	22.05
Unplanned unavailable hours	0	0	5.00	0	0	0	0	0
Fault exposure hours	0	0	0	0	0	0	0	0
Effective Reset hours	0	0	0	0	0	0	0	0
Required hours	2208.00	2208.00	2160.00	2184.00	2208.00	2208.00	2184.00	2184.00
Train 2								
Planned unavailable hours	11.70	9.20	0	0	0	7.33	19.55	9.17
Unplanned unavailable hours	0	0	0	0	0	0	0	0
Fault exposure hours	0	0	0	0	0	0	0	0
Effective Reset hours	0	0	0	0	0	0	0	0
Required hours	2208.00	2208.00	2160.00	2184.00	2208.00	2208.00	2184.00	2184.00
Indicator value	0.5%	0.4%	0.4%	0.4%	0.3%	0.3%	0.4%	0.4%

Licensee Comments: none

Safety System Functional Failures (BWR)



Thresholds: White > 6.0

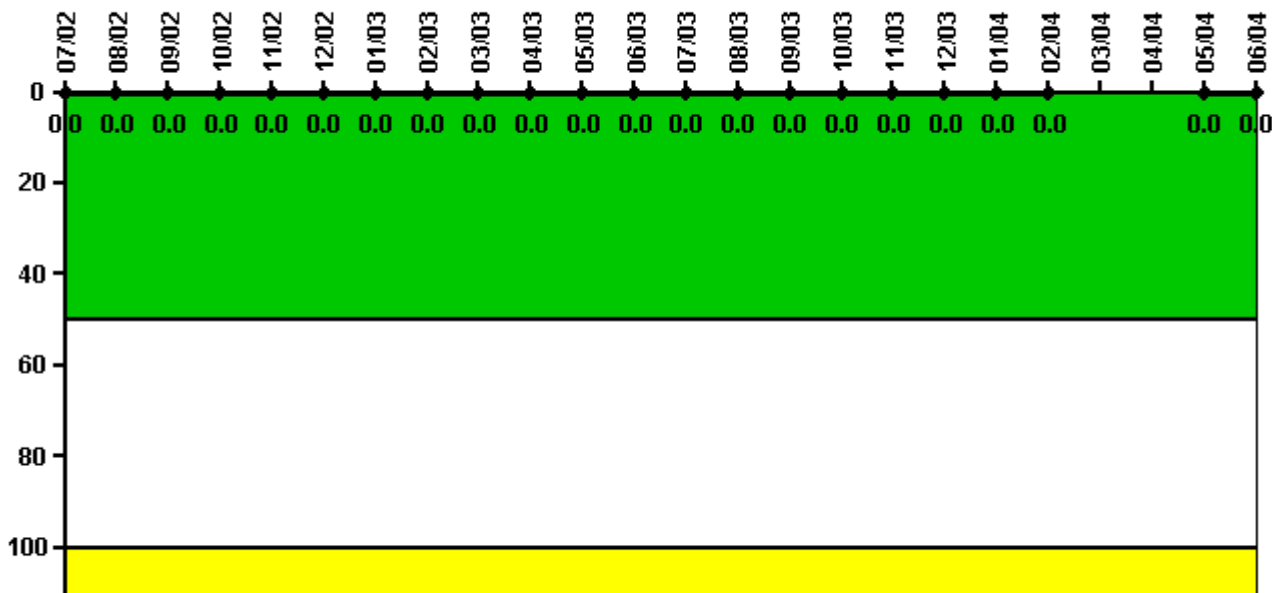
Notes

Safety System Functional Failures (BWR)	3Q/02	4Q/02	1Q/03	2Q/03	3Q/03	4Q/03	1Q/04	2Q/04
Safety System Functional Failures	0	0	0	1	1	1	0	1
Indicator value	2	2	1	1	2	3	3	3

Licensee Comments:

2Q/04: The third and fourth quarter 1999 Safety System Functional Failure PI data is revised from 1 to 0 (3Q) and from 0 to 1 (4Q). These changes reflect the results of a recent assessment of LER's reported as Safety System Functional Failures under the Reactor Oversight Process. This revision to previously reported data does not have any effect on the color of the current PI nor would it have affected the PI color in 1999.

Reactor Coolant System Activity



Thresholds: White > 50.0 Yellow > 100.0

Notes

Reactor Coolant System Activity	7/02	8/02	9/02	10/02	11/02	12/02	1/03	2/03	3/03	4/03	5/03	6/03
Maximum activity	0.000002	0.000004	0.000003	0.000004	0.000004	0.000004	0.000005	0.000003	0.000004	0.000003	0.000004	0.000005
Technical specification limit	0.2	0.2	0.2	0.2	0.2	0.2	0.2	0.2	0.2	0.2	0.2	0.2
Indicator value	0	0	0	0	0	0	0	0	0	0	0	0
Reactor Coolant System Activity	7/03	8/03	9/03	10/03	11/03	12/03	1/04	2/04	3/04	4/04	5/04	6/04
Maximum activity	0.000004	0.000003	0.000003	0.000005	0.000007	0.000005	0.000006	0.000007	N/A	N/A	0.000003	0.000005
Technical specification limit	0.2	0.2	0.2	0.2	0.2	0.2	0.2	0.2	0.2	0.2	0.2	0.2
Indicator value	0	0	0	0	0	0	0	0	N/A	N/A	0	0

Licensee Comments: none

Reactor Coolant System Leakage



Thresholds: White > 50.0 Yellow > 100.0

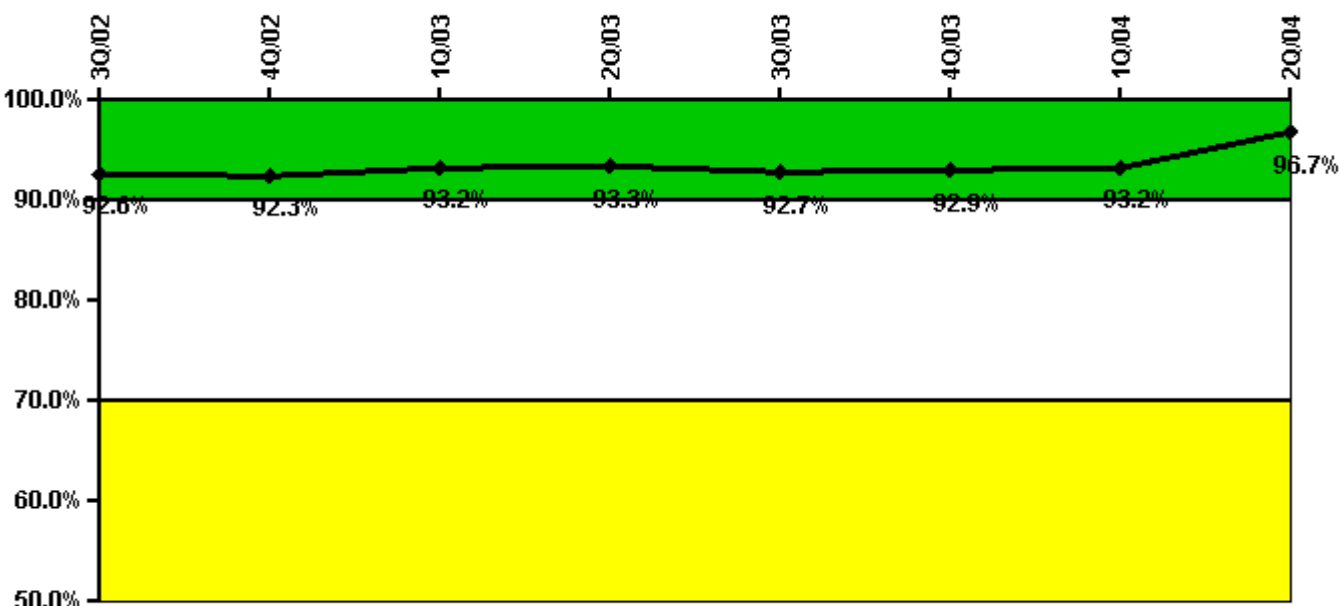
Notes

Reactor Coolant System Leakage	7/02	8/02	9/02	10/02	11/02	12/02	1/03	2/03	3/03	4/03	5/03	6/03
Maximum leakage	1.630	1.650	1.680	1.660	1.630	1.640	1.640	1.640	1.620	1.630	1.600	1.650
Technical specification limit	25.0	25.0	25.0	25.0	25.0	25.0	25.0	25.0	25.0	25.0	25.0	25.0
Indicator value	6.5	6.6	6.7	6.6	6.5	6.6	6.6	6.6	6.5	6.5	6.4	6.6

Reactor Coolant System Leakage	7/03	8/03	9/03	10/03	11/03	12/03	1/04	2/04	3/04	4/04	5/04	6/04
Maximum leakage	1.650	1.660	1.650	1.750	1.640	1.640	1.640	1.620	N/A	1.620	1.630	1.640
Technical specification limit	25.0	25.0	25.0	25.0	25.0	25.0	25.0	25.0	25.0	25.0	25.0	25.0
Indicator value	6.6	6.6	6.6	7.0	6.6	6.6	6.6	6.5	N/A	6.5	6.5	6.6

Licensee Comments: none

Drill/Exercise Performance



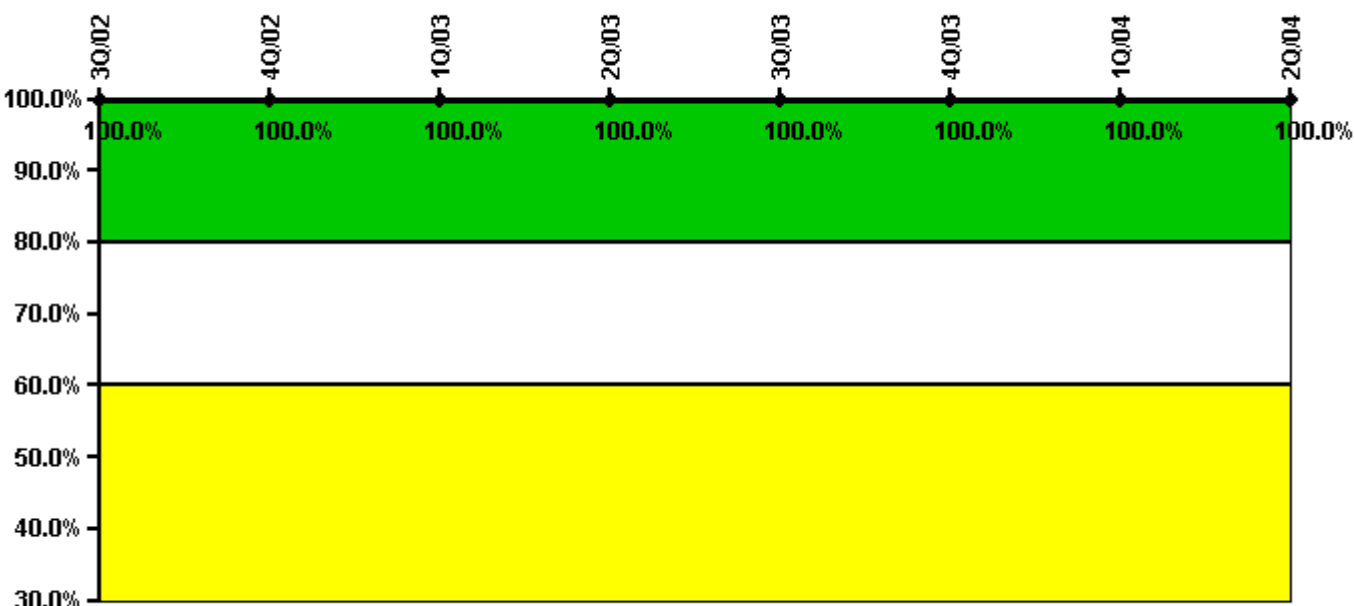
Thresholds: White < 90.0% Yellow < 70.0%

Notes

Drill/Exercise Performance	3Q/02	4Q/02	1Q/03	2Q/03	3Q/03	4Q/03	1Q/04	2Q/04
Successful opportunities	10.0	10.0	34.0	15.0	19.0	10.0	6.0	13.0
Total opportunities	10.0	10.0	35.0	16.0	21.0	10.0	6.0	13.0
Indicator value	92.6%	92.3%	93.2%	93.3%	92.7%	92.9%	93.2%	96.7%

Licensee Comments: none

ERO Drill Participation



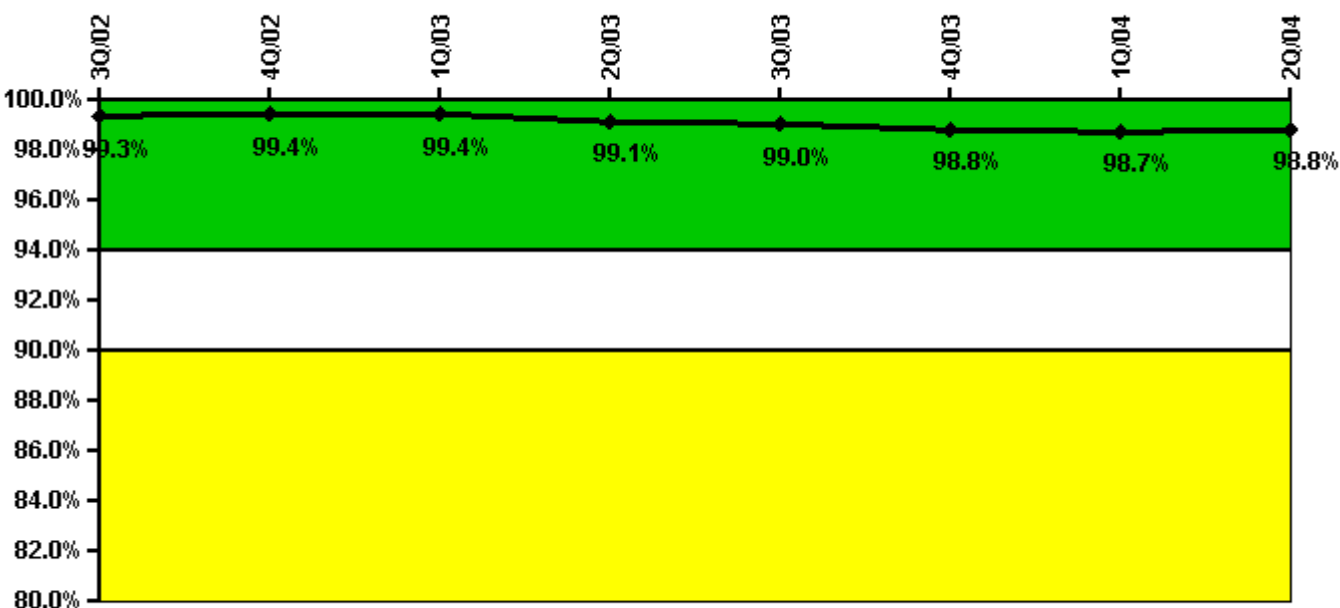
Thresholds: White < 80.0% Yellow < 60.0%

Notes

ERO Drill Participation	3Q/02	4Q/02	1Q/03	2Q/03	3Q/03	4Q/03	1Q/04	2Q/04
Participating Key personnel	116.0	112.0	118.0	71.0	73.0	71.0	71.0	79.0
Total Key personnel	116.0	112.0	118.0	71.0	73.0	71.0	71.0	79.0
Indicator value	100.0%	100.0%	100.0%	100.0%	100.0%	100.0%	100.0%	100.0%

Licensee Comments: none

Alert & Notification System



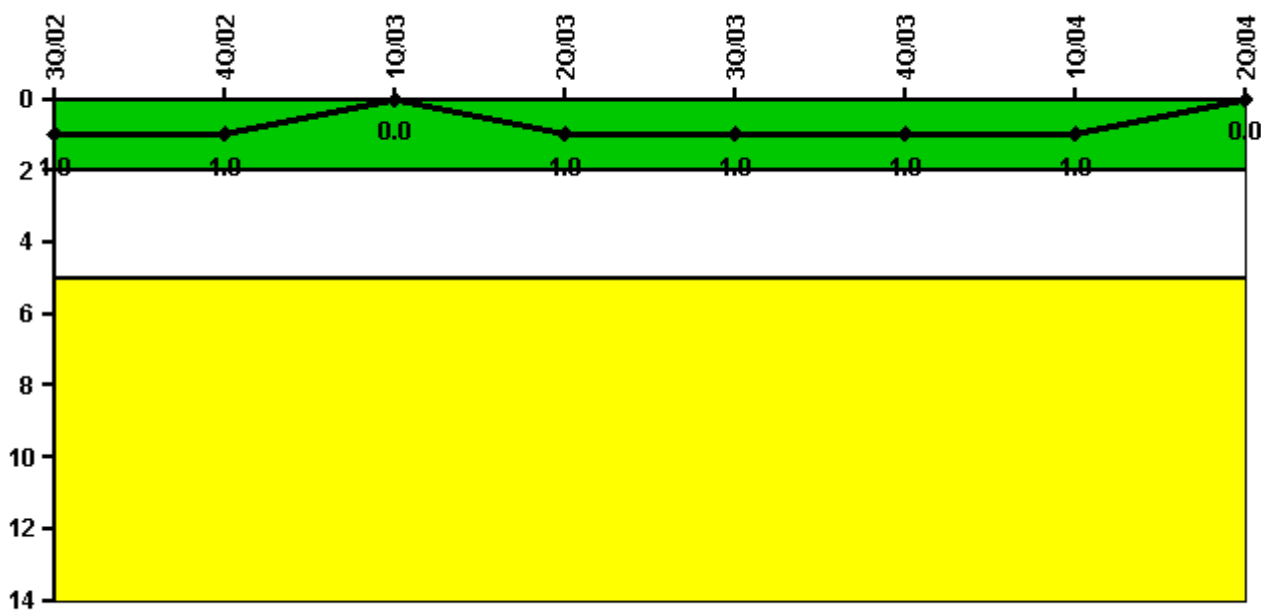
Thresholds: White < 94.0% Yellow < 90.0%

Notes

Alert & Notification System	3Q/02	4Q/02	1Q/03	2Q/03	3Q/03	4Q/03	1Q/04	2Q/04
Successful siren-tests	780	889	781	990	888	772	887	773
Total sirens-tests	784	896	784	1008	896	784	896	784
Indicator value	99.3%	99.4%	99.4%	99.1%	99.0%	98.8%	98.7%	98.8%

Licensee Comments: none

Occupational Exposure Control Effectiveness



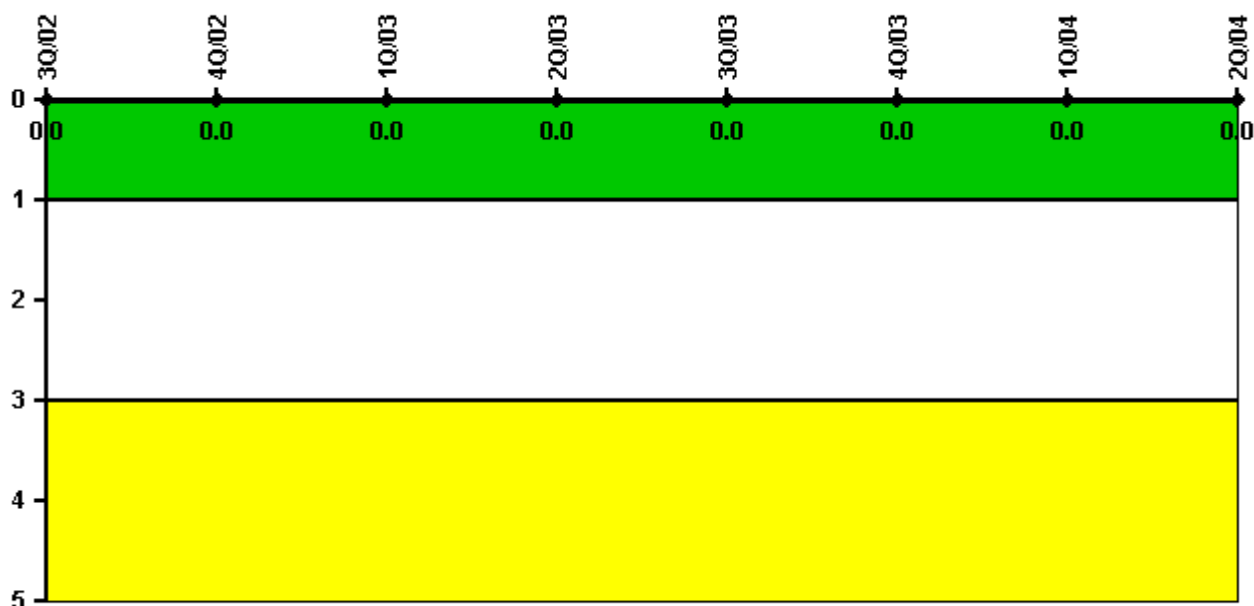
Thresholds: White > 2.0 Yellow > 5.0

Notes

Occupational Exposure Control Effectiveness	3Q/02	4Q/02	1Q/03	2Q/03	3Q/03	4Q/03	1Q/04	2Q/04
High radiation area occurrences	0	0	0	1	0	0	0	0
Very high radiation area occurrences	0	0	0	0	0	0	0	0
Unintended exposure occurrences	0	0	0	0	0	0	0	0
Indicator value	1	1	0	1	1	1	1	0

Licensee Comments: none

RETS/ODCM Radiological Effluent



Thresholds: White > 1.0 Yellow > 3.0

Notes

RETS/ODCM Radiological Effluent	3Q/02	4Q/02	1Q/03	2Q/03	3Q/03	4Q/03	1Q/04	2Q/04
RETS/ODCM occurrences	0	0	0	0	0	0	0	0
Indicator value	0	0	0	0	0	0	0	0

Licensee Comments: none

[Physical Protection](#) information not publicly available.

▲ [Action Matrix Summary](#) | [Inspection Findings Summary](#) | [PI Summary](#) | [Reactor Oversight Process](#)

Last Modified: September 8, 2004