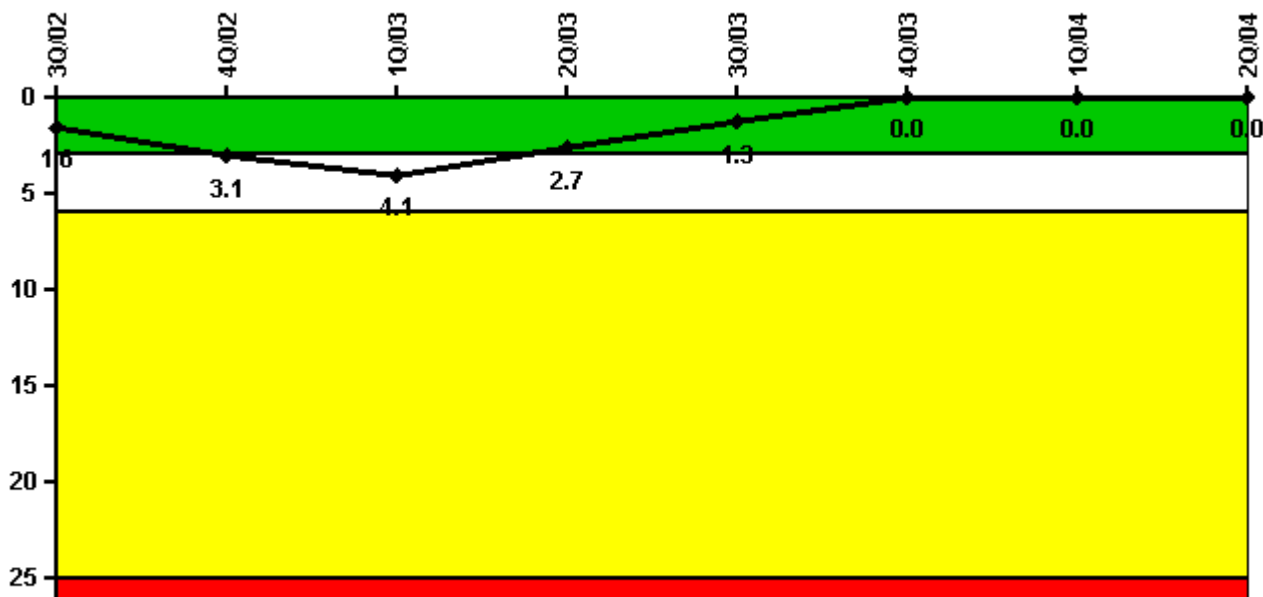


## South Texas 2

### 2Q/2004 Performance Indicators

Licensee's General Comments: none

#### Unplanned Scrams per 7000 Critical Hrs



Thresholds: White > 3.0 Yellow > 6.0 Red > 25.0

#### Notes

Unplanned Scrams per 7000 Critical Hrs	3Q/02	4Q/02	1Q/03	2Q/03	3Q/03	4Q/03	1Q/04	2Q/04
Unplanned scrams	1.0	1.0	0	0	0	0	0	0
Critical hours	2181.2	287.6	546.8	2183.0	2208.0	2209.0	2184.0	1561.6
Indicator value	1.6	3.1	4.1	2.7	1.3	0	0	0

Licensee Comments: none

### Scrams with Loss of Normal Heat Removal



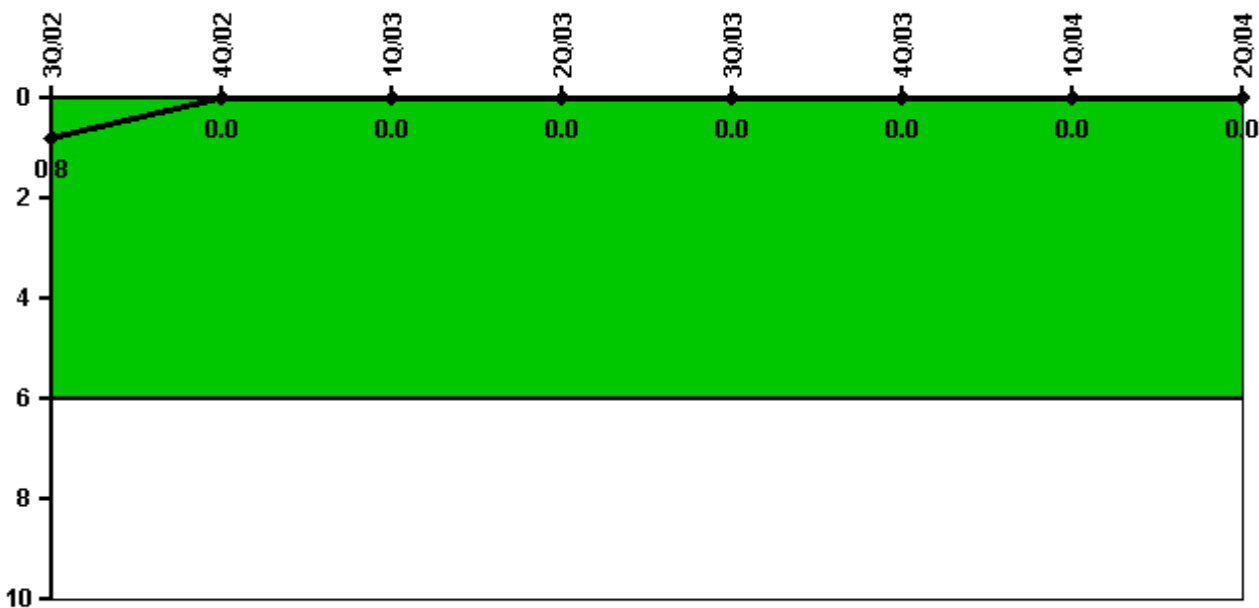
Thresholds: White > 2.0 Yellow > 10.0 Red > 20.0

#### Notes

Scrams with Loss of Normal Heat Removal	3Q/02	4Q/02	1Q/03	2Q/03	3Q/03	4Q/03	1Q/04	2Q/04
Scrams	0	0	0	0	0	0	0	0
Indicator value	1.0	1.0	1.0	1.0	1.0	1.0	0	0

Licensee Comments: none

### Unplanned Power Changes per 7000 Critical Hrs



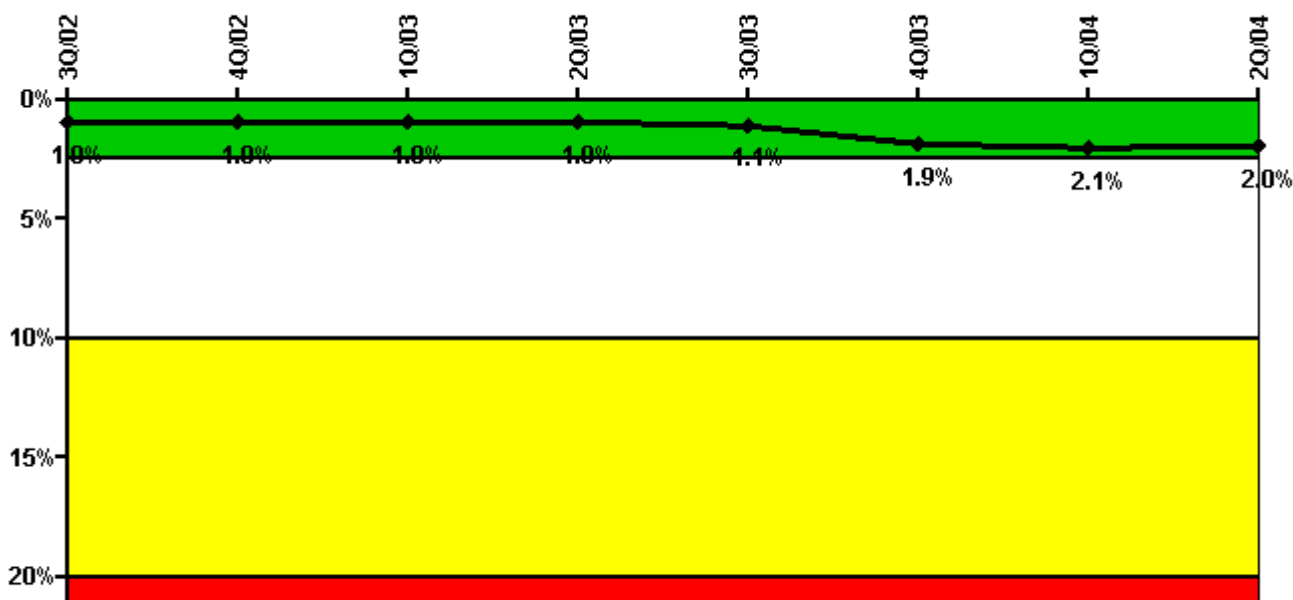
Thresholds: White > 6.0

#### Notes

Unplanned Power Changes per 7000 Critical Hrs	3Q/02	4Q/02	1Q/03	2Q/03	3Q/03	4Q/03	1Q/04	2Q/04
Unplanned power changes	0	0	0	0	0	0	0	0
Critical hours	2181.2	287.6	546.8	2183.0	2208.0	2209.0	2184.0	1561.6
Indicator value	0.8	0	0	0	0	0	0	0

Licensee Comments: none

### Safety System Unavailability, Emergency AC Power, >2EDG



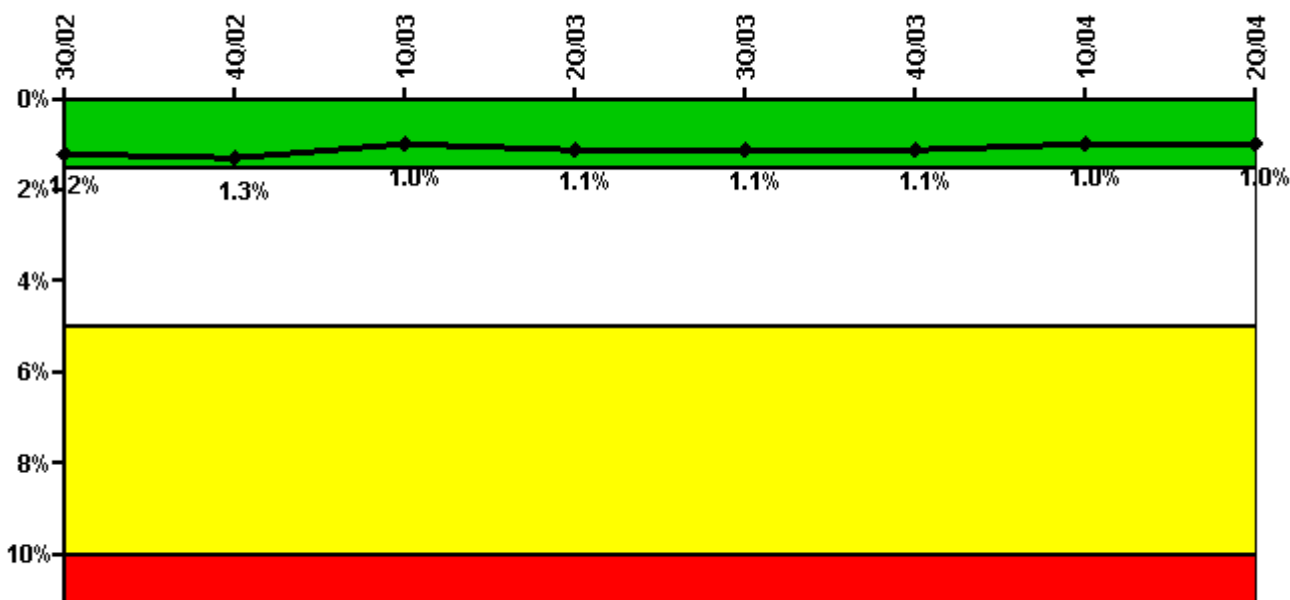
Thresholds: White > 2.5% Yellow > 10.0% Red > 20.0%

#### Notes

Safety System Unavailability, Emergency AC Power, >2EDG	3Q/02	4Q/02	1Q/03	2Q/03	3Q/03	4Q/03	1Q/04	2Q/04
<b>Train 1</b>								
Planned unavailable hours	15.50	0	12.52	0	20.90	27.47	0	0
Unplanned unavailable hours	0	0	0	0	0	0	0	0
Fault exposure hours	0	0	0	0	0	0	0	0
Effective Reset hours	0	0	0	0	0	0	0	0
Required hours	2208.00	2209.00	2160.00	2183.00	2208.00	2208.00	2184.00	2183.00
<b>Train 2</b>								
Planned unavailable hours	18.00	0	0	0	39.74	20.02	0	14.78
Unplanned unavailable hours	0	0	0	0	34.18	563.12	229.00	0
Fault exposure hours	0	0	0	0	0	0	0	0
Effective Reset hours	0	0	0	0	0	0	0	0
Required hours	2208.00	2209.00	2160.00	2183.00	2208.00	2208.00	2184.00	2183.00
<b>Train 3</b>								
Planned unavailable hours	12.95	0	0	15.10	44.83	40.62	0	0
Unplanned unavailable hours	0	0	0	7.43	0	0	0	0
Fault exposure hours	0	0	0	0	0	0	0	0
Effective Reset hours	0	0	0	0	0	0	0	0
Required hours	2208.00	2209.00	2160.00	2183.00	2208.00	2208.00	2184.00	2183.00
<b>Indicator value</b>	<b>1.0%</b>	<b>1.0%</b>	<b>1.0%</b>	<b>1.0%</b>	<b>1.1%</b>	<b>1.9%</b>	<b>2.1%</b>	<b>2.0%</b>

Licensee Comments: none

### Safety System Unavailability, High Pressure Injection System (HPSI)



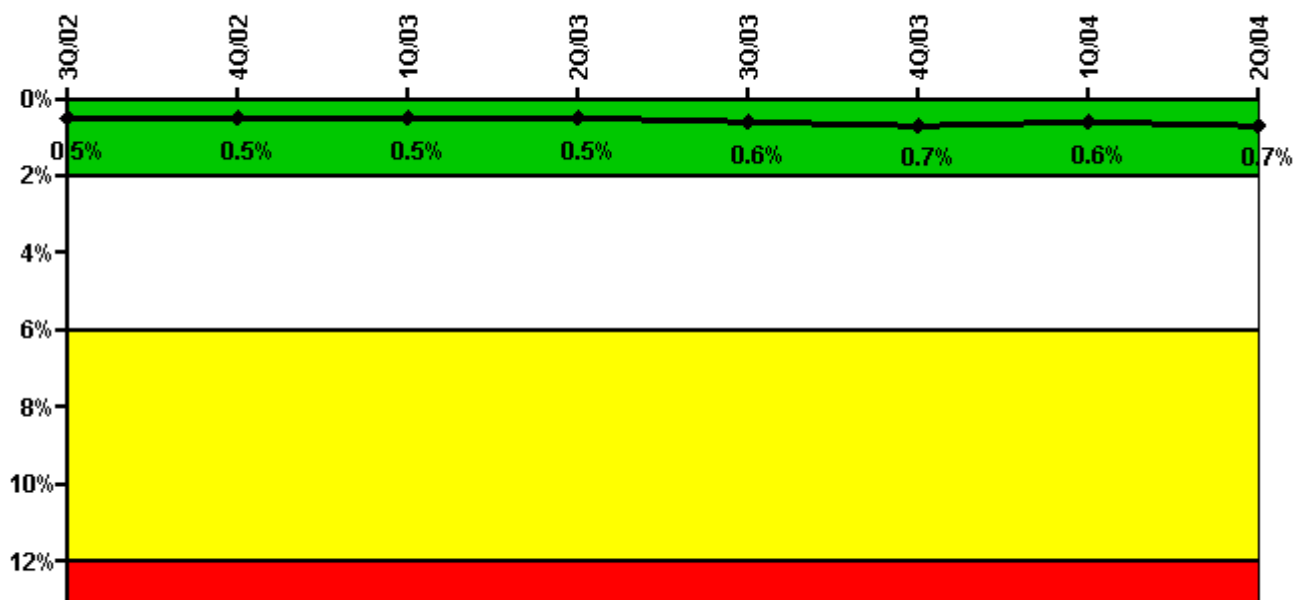
Thresholds: White > 1.5% Yellow > 5.0% Red > 10.0%

#### Notes

Safety System Unavailability, High Pressure Injection System (HPSI)	3Q/02	4Q/02	1Q/03	2Q/03	3Q/03	4Q/03	1Q/04	2Q/04
<b>Train 1</b>								
Planned unavailable hours	52.87	0	0.42	13.02	9.08	23.45	0	14.38
Unplanned unavailable hours	0	0	0	0	0	0	0	0
Fault exposure hours	0	0	0	0	0	0	0	0
Effective Reset hours	0	0	0	0	0	0	0	0
Required hours	2208.00	445.52	1205.61	2183.00	2208.00	2208.00	2170.23	1614.63
<b>Train 2</b>								
Planned unavailable hours	38.43	0	0	19.30	23.93	26.92	0.37	1.57
Unplanned unavailable hours	0	0	0	0	0	0	0	0
Fault exposure hours	0	0	0	0	0	0	0	0
Effective Reset hours	0	0	0	0	0	0	0	0
Required hours	2208.00	445.52	1205.61	2183.00	2208.00	2208.00	2170.23	1614.63
<b>Train 3</b>								
Planned unavailable hours	89.79	0	0.58	46.92	14.87	0.77	0	42.83
Unplanned unavailable hours	0	0	0	0	0	0	0	0
Fault exposure hours	0	0	0	0	0	0	0	0
Effective Reset hours	0	0	0	0	0	0	0	0
Required hours	2208.00	445.52	1205.61	2183.00	2208.00	2208.00	2170.23	1614.63
<b>Indicator value</b>	<b>1.2%</b>	<b>1.3%</b>	<b>1.0%</b>	<b>1.1%</b>	<b>1.1%</b>	<b>1.1%</b>	<b>1.0%</b>	<b>1.0%</b>

Licensee Comments: none

### Safety System Unavailability, Heat Removal System (AFW)

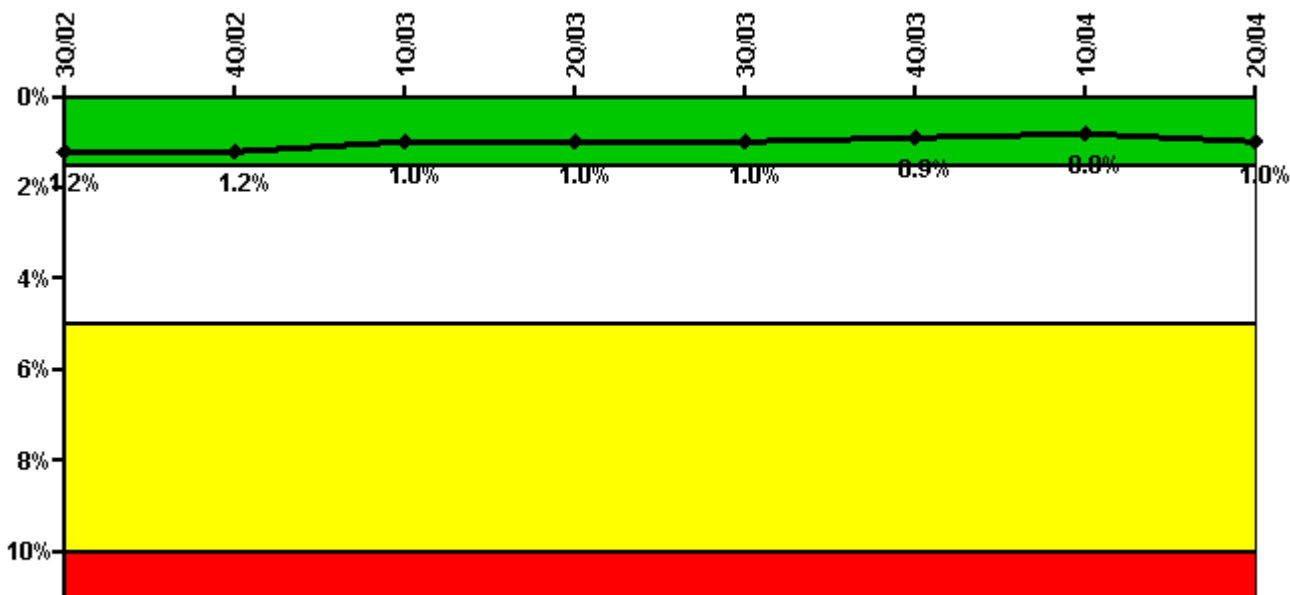


Thresholds: White > 2.0% Yellow > 6.0% Red > 12.0%

#### Notes

Safety System Unavailability, Heat Removal System (AFW)	3Q/02	4Q/02	1Q/03	2Q/03	3Q/03	4Q/03	1Q/04	2Q/04
<b>Train 1</b>								
Planned unavailable hours	0	0	0	1.83	0	22.55	0	39.20
Unplanned unavailable hours	0	0	0	0	0	0	0	0
Fault exposure hours	0	0	0	0	0	0	0	0
Effective Reset hours	0	0	0	0	0	0	0	0
Required hours	2208.00	417.52	1183.57	2183.00	2208.00	2208.00	2167.62	1607.82
<b>Train 2</b>								
Planned unavailable hours	4.50	0	0	11.52	45.45	89.30	0	21.73
Unplanned unavailable hours	0	0	0	0	0	0	0	0
Fault exposure hours	0	0	0	0	0	0	0	0
Effective Reset hours	0	0	0	0	0	0	0	0
Required hours	2208.00	417.52	1183.57	2183.00	2208.00	2208.00	2167.62	1607.82
<b>Train 3</b>								
Planned unavailable hours	19.26	0	11.55	22.68	33.67	0	0	43.15
Unplanned unavailable hours	0	0	0	0	0	0	0	0
Fault exposure hours	0	0	0	0	0	0	0	0
Effective Reset hours	0	0	0	0	0	0	0	0
Required hours	2208.00	417.52	1183.57	2183.00	2208.00	2208.00	2167.62	1607.82
<b>Train 4</b>								
Planned unavailable hours	0	0	0	19.75	27.75	13.40	0	6.63
Unplanned unavailable hours	0	9.52	0	0	0	0	0	10.77
Fault exposure hours	0	0	0	0	0	0	0	0
Effective Reset hours	0	0	0	0	0	0	0	0
Required hours	2208.00	417.52	1183.57	2183.00	2208.00	2208.00	2167.62	1584.82
<b>Indicator value</b>	<b>0.5%</b>	<b>0.5%</b>	<b>0.5%</b>	<b>0.5%</b>	<b>0.6%</b>	<b>0.7%</b>	<b>0.6%</b>	<b>0.7%</b>

### Safety System Unavailability, Residual Heat Removal System



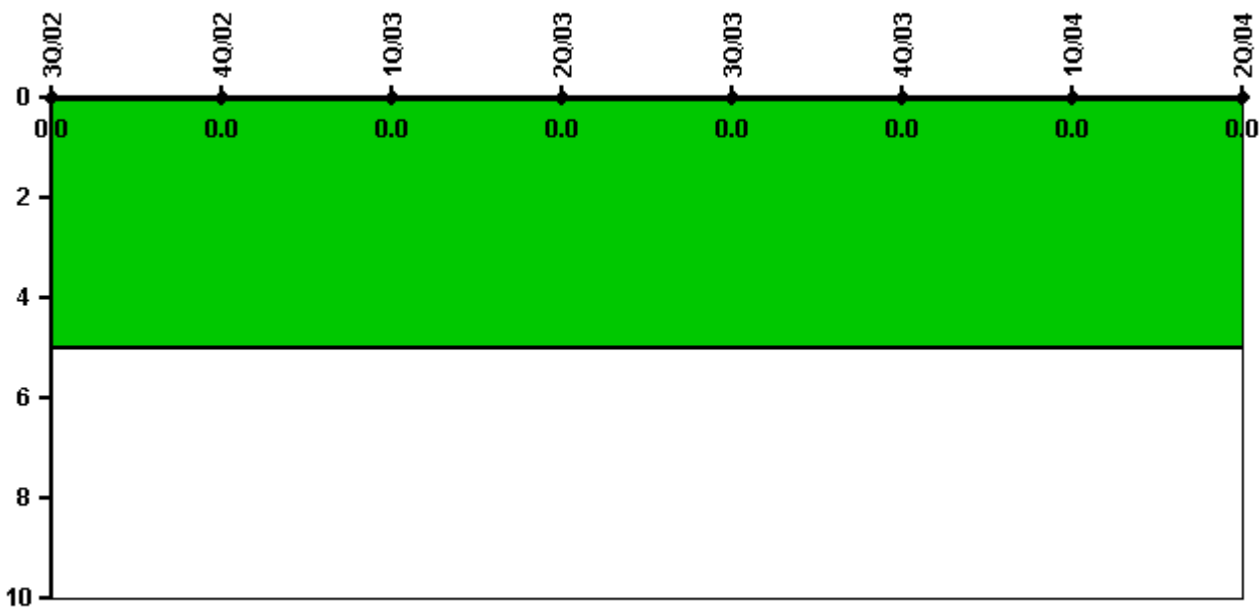
Thresholds: White > 1.5% Yellow > 5.0% Red > 10.0%

#### Notes

Safety System Unavailability, Residual Heat Removal System	3Q/02	4Q/02	1Q/03	2Q/03	3Q/03	4Q/03	1Q/04	2Q/04
<b>Train 1</b>								
Planned unavailable hours	52.87	0	0.42	3.80	14.42	0	0	50.26
Unplanned unavailable hours	0	0	0	0	0	0	0	0
Fault exposure hours	0	0	0	0	0	0	0	0
Effective Reset hours	0	0	0	0	0	0	0	0
Required hours	2208.00	1251.95	2160.00	2183.00	2208.00	2208.00	2184.00	2136.40
<b>Train 2</b>								
Planned unavailable hours	83.03	0	0	19.30	0.65	26.92	0.37	1.57
Unplanned unavailable hours	0	0	0	0	0	0	0	0
Fault exposure hours	0	0	0	0	0	0	0	0
Effective Reset hours	0	0	0	0	0	0	0	0
Required hours	2208.00	1251.95	2160.00	2183.00	2208.00	2208.00	2184.00	2136.40
<b>Train 3</b>								
Planned unavailable hours	109.53	0	0.58	61.00	18.32	0	0	43.46
Unplanned unavailable hours	0	0	0	0	0	0	0	0
Fault exposure hours	0	0	0	0	0	0	0	0
Effective Reset hours	0	0	0	0	0	0	0	0
Required hours	2208.00	1251.95	2160.00	2183.00	2208.00	2208.00	2184.00	2136.60
<b>Indicator value</b>	<b>1.2%</b>	<b>1.2%</b>	<b>1.0%</b>	<b>1.0%</b>	<b>1.0%</b>	<b>0.9%</b>	<b>0.8%</b>	<b>1.0%</b>

Licensee Comments: none

### Safety System Functional Failures (PWR)



Thresholds: White > 5.0

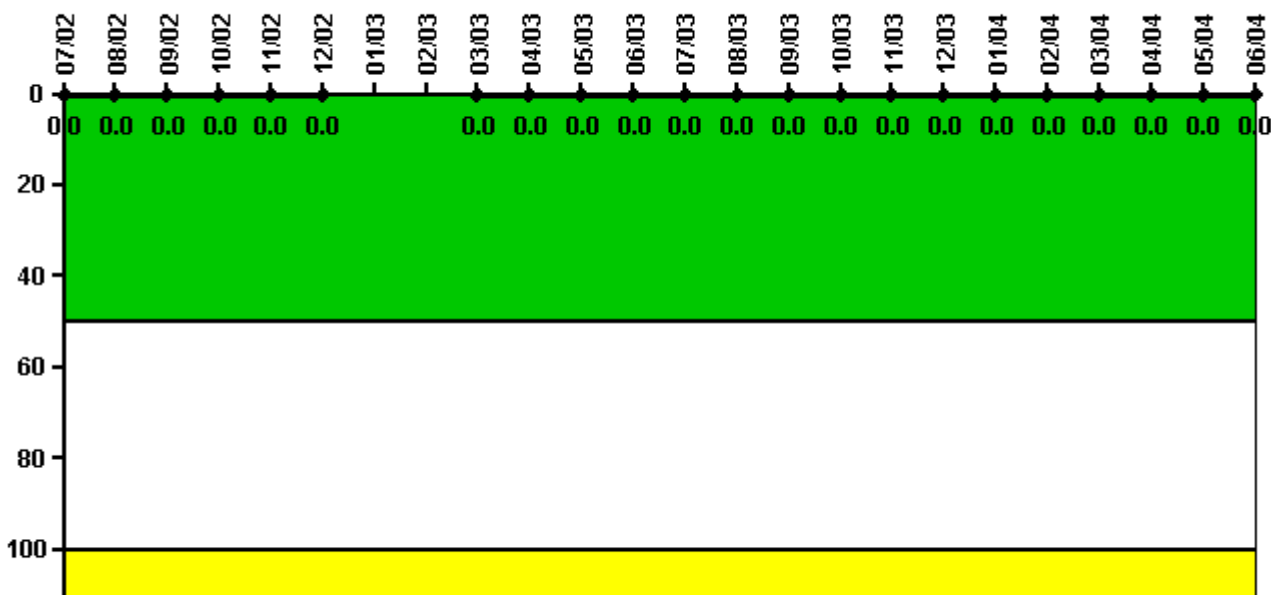
#### Notes

Safety System Functional Failures (PWR)	3Q/02	4Q/02	1Q/03	2Q/03	3Q/03	4Q/03	1Q/04	2Q/04
Safety System Functional Failures	0	0	0	0	0	0	0	0
Indicator value	0	0	0	0	0	0	0	0

Licensee Comments: none



### Reactor Coolant System Activity



Thresholds: White > 50.0 Yellow > 100.0

#### Notes

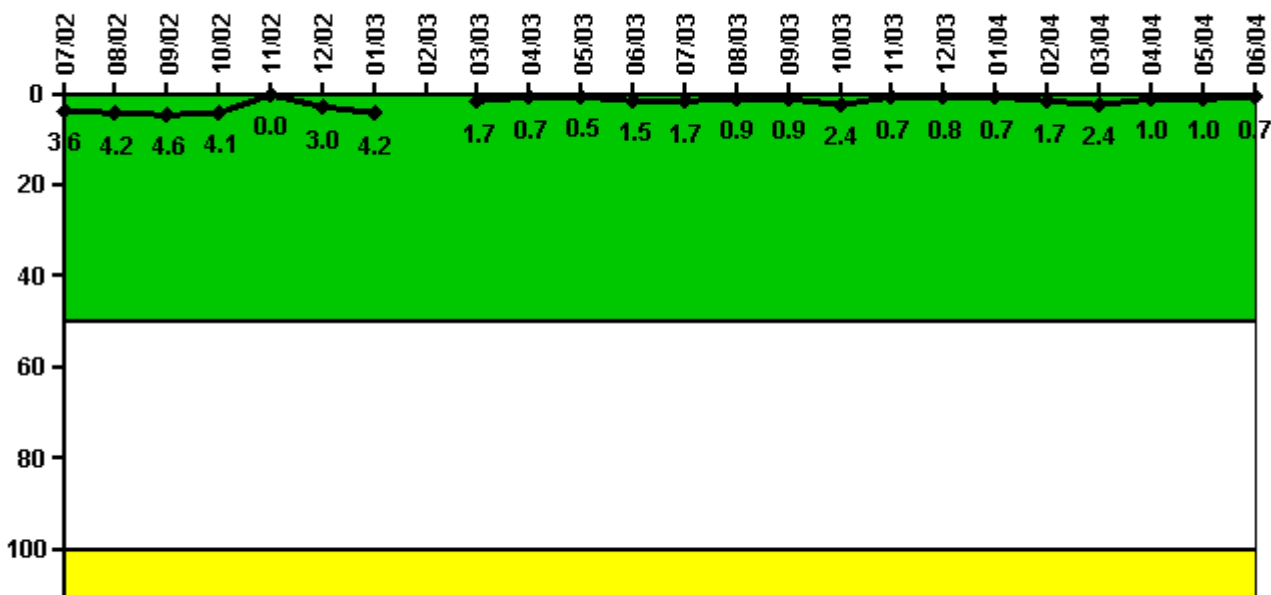
Reactor Coolant System Activity	7/02	8/02	9/02	10/02	11/02	12/02	1/03	2/03	3/03	4/03	5/03	6/03
Maximum activity	0.000117	0.000116	0.000123	0	0	0.000057	N/A	N/A	0.000051	0.000072	0.000060	0.000072
Technical specification limit	1.0	1.0	1.0	1.0	1.0	1.0	1.0	1.0	1.0	1.0	1.0	1.0
Indicator value	0	0	0	0	0	0	N/A	N/A	0	0	0	0

Reactor Coolant System Activity	7/03	8/03	9/03	10/03	11/03	12/03	1/04	2/04	3/04	4/04	5/04	6/04
Maximum activity	0.000065	0.000072	0.000075	0.000074	0.000072	0.000076	0.000078	0.000082	0.000084	0	0.000091	0.000051
Technical specification limit	1.0	1.0	1.0	1.0	1.0	1.0	1.0	1.0	1.0	1.0	1.0	1.0
Indicator value	0	0	0	0	0	0	0	0	0	0	0	0

Licensee Comments: none

### Reactor Coolant System Leakage



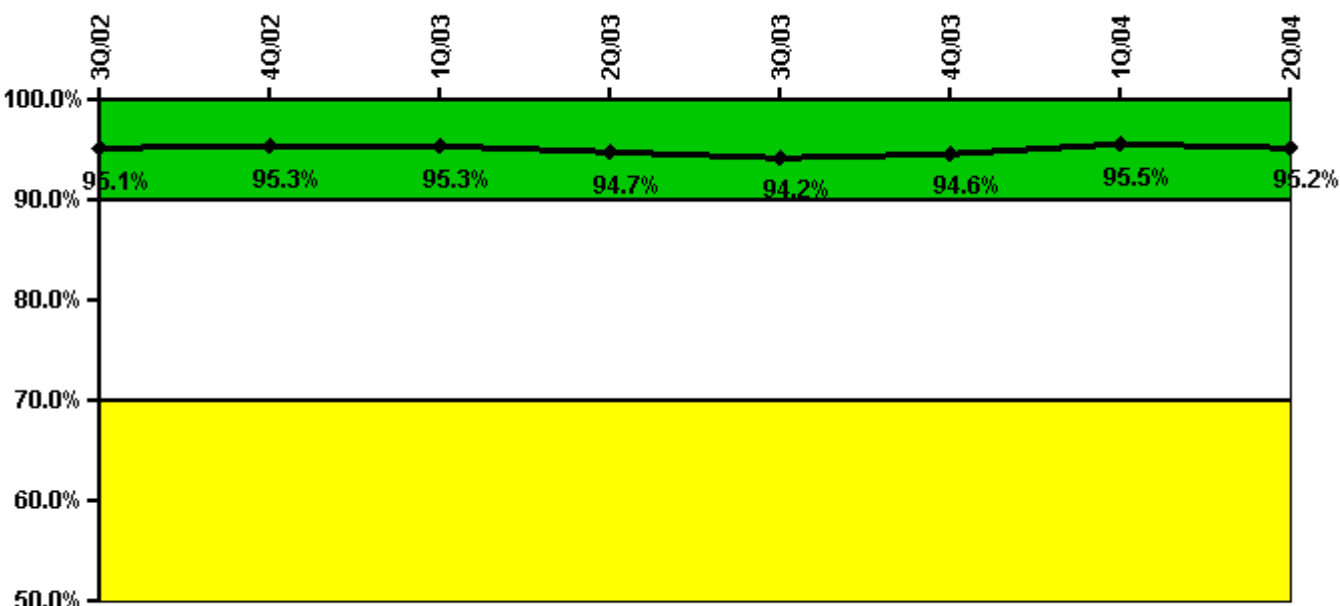
Thresholds: White > 50.0 Yellow > 100.0

#### Notes

Reactor Coolant System Leakage	7/02	8/02	9/02	10/02	11/02	12/02	1/03	2/03	3/03	4/03	5/03	6/03
Maximum leakage	0.361	0.415	0.458	0.410	0	0.302	0.417	N/A	0.168	0.069	0.053	0.145
Technical specification limit	10.0	10.0	10.0	10.0	10.0	10.0	10.0	10.0	10.0	10.0	10.0	10.0
Indicator value	3.6	4.2	4.6	4.1	0	3.0	4.2	N/A	1.7	0.7	0.5	1.5
Reactor Coolant System Leakage	7/03	8/03	9/03	10/03	11/03	12/03	1/04	2/04	3/04	4/04	5/04	6/04
Maximum leakage	0.168	0.091	0.087	0.238	0.068	0.084	0.074	0.173	0.236	0.097	0.097	0.074
Technical specification limit	10.0	10.0	10.0	10.0	10.0	10.0	10.0	10.0	10.0	10.0	10.0	10.0
Indicator value	1.7	0.9	0.9	2.4	0.7	0.8	0.7	1.7	2.4	1.0	1.0	0.7

Licensee Comments: none

### Drill/Exercise Performance



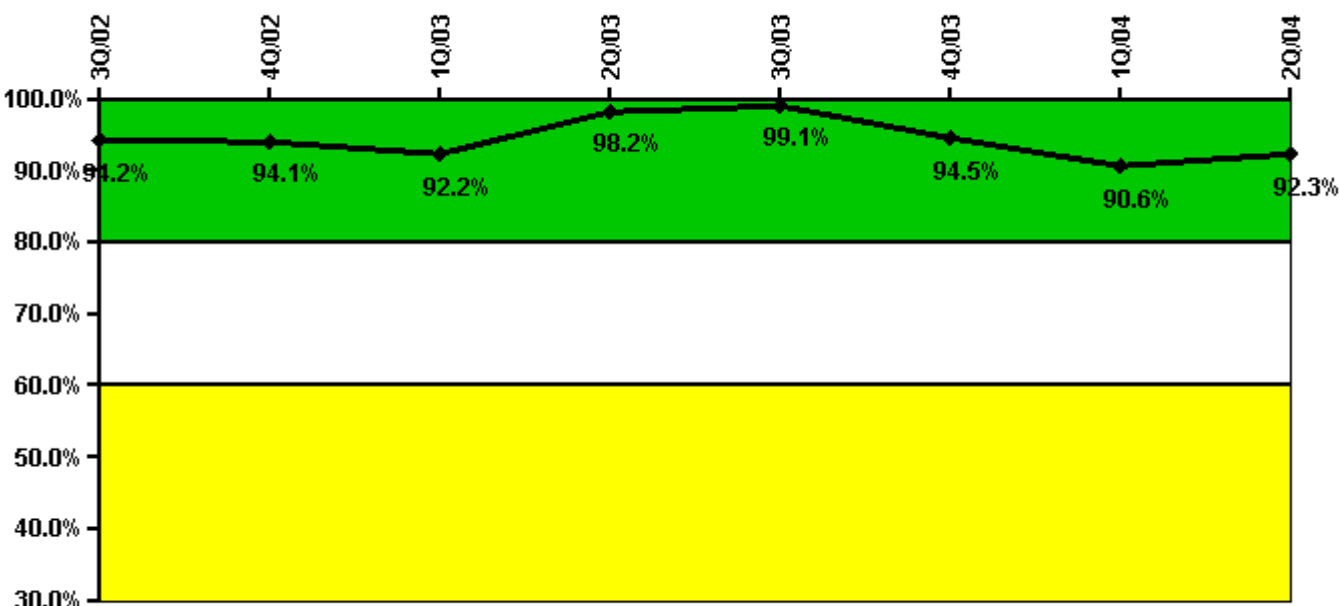
Thresholds: White < 90.0% Yellow < 70.0%

#### Notes

Drill/Exercise Performance	3Q/02	4Q/02	1Q/03	2Q/03	3Q/03	4Q/03	1Q/04	2Q/04
Successful opportunities	33.0	0	0	61.0	10.0	134.0	8.0	73.0
Total opportunities	34.0	0	0	67.0	12.0	138.0	8.0	76.0
Indicator value	95.1%	95.3%	95.3%	94.7%	94.2%	94.6%	95.5%	95.2%

Licensee Comments: none

### ERO Drill Participation



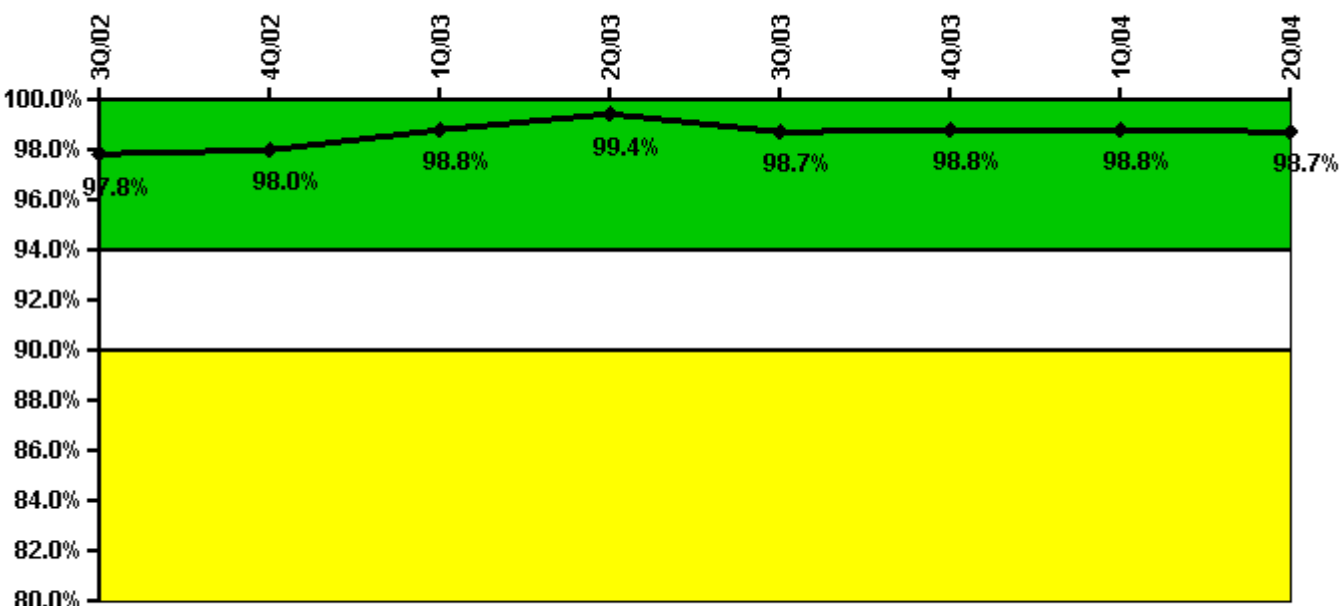
Thresholds: White < 80.0% Yellow < 60.0%

#### Notes

ERO Drill Participation	3Q/02	4Q/02	1Q/03	2Q/03	3Q/03	4Q/03	1Q/04	2Q/04
Participating Key personnel	113.0	111.0	107.0	111.0	110.0	104.0	106.0	108.0
Total Key personnel	120.0	118.0	116.0	113.0	111.0	110.0	117.0	117.0
Indicator value	94.2%	94.1%	92.2%	98.2%	99.1%	94.5%	90.6%	92.3%

Licensee Comments: none

### Alert & Notification System



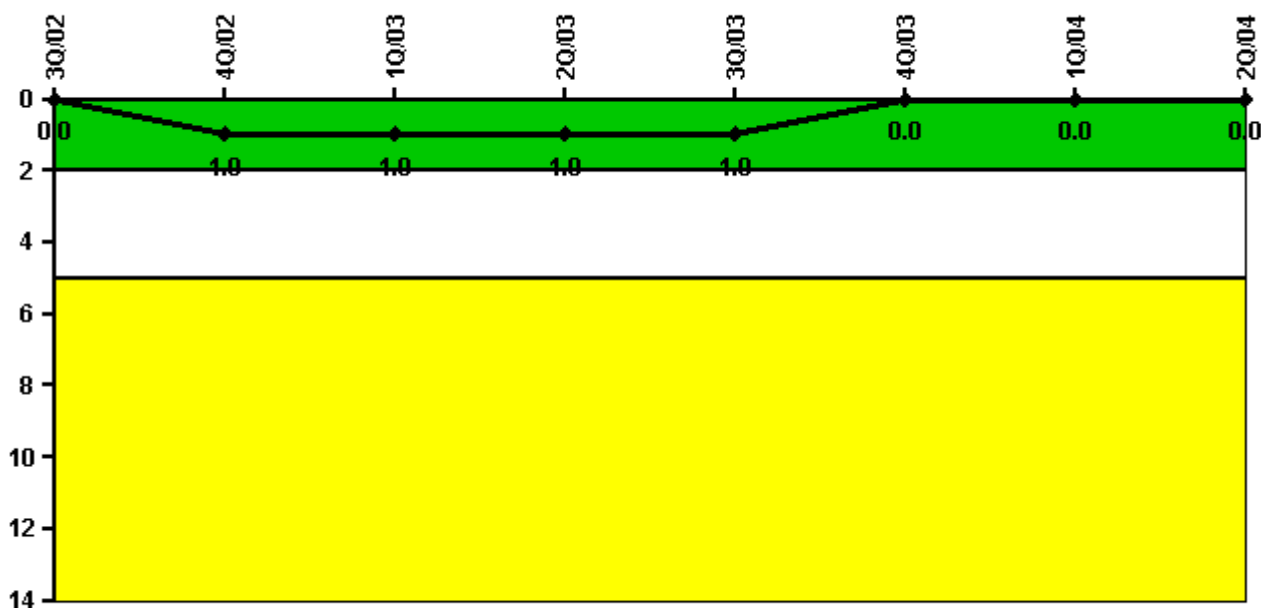
Thresholds: White < 94.0% Yellow < 90.0%

#### Notes

Alert & Notification System	3Q/02	4Q/02	1Q/03	2Q/03	3Q/03	4Q/03	1Q/04	2Q/04
Successful siren-tests	190	253	224	192	215	223	192	223
Total sirens-tests	192	256	224	192	224	224	192	224
Indicator value	97.8%	98.0%	98.8%	99.4%	98.7%	98.8%	98.8%	98.7%

Licensee Comments: none

### Occupational Exposure Control Effectiveness



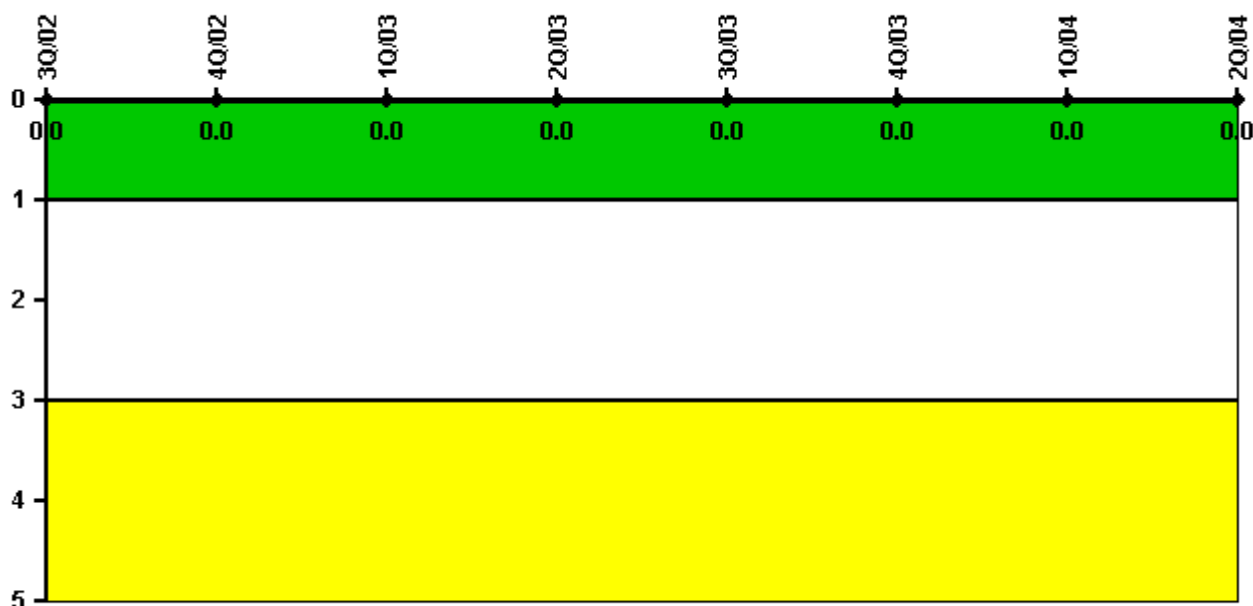
Thresholds: White > 2.0 Yellow > 5.0

#### Notes

Occupational Exposure Control Effectiveness	3Q/02	4Q/02	1Q/03	2Q/03	3Q/03	4Q/03	1Q/04	2Q/04
High radiation area occurrences	0	1	0	0	0	0	0	0
Very high radiation area occurrences	0	0	0	0	0	0	0	0
Unintended exposure occurrences	0	0	0	0	0	0	0	0
<b>Indicator value</b>	<b>0</b>	<b>1</b>	<b>1</b>	<b>1</b>	<b>1</b>	<b>0</b>	<b>0</b>	<b>0</b>

Licensee Comments: none

### RETS/ODCM Radiological Effluent



Thresholds: White > 1.0 Yellow > 3.0

#### Notes

RETS/ODCM Radiological Effluent	3Q/02	4Q/02	1Q/03	2Q/03	3Q/03	4Q/03	1Q/04	2Q/04
RETS/ODCM occurrences	0	0	0	0	0	0	0	0
Indicator value	0	0	0	0	0	0	0	0

Licensee Comments: none

[Physical Protection](#) information not publicly available.

▲ [Action Matrix Summary](#) | [Inspection Findings Summary](#) | [PI Summary](#) | [Reactor Oversight Process](#)

Last Modified: September 8, 2004