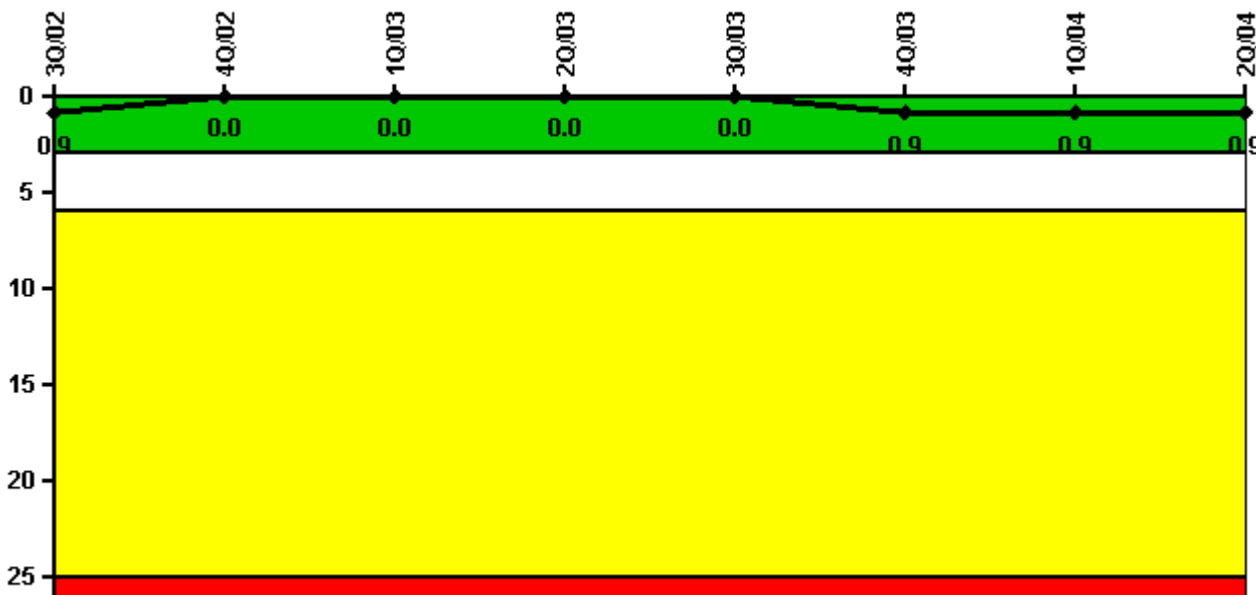


Seabrook 1

2Q/2004 Performance Indicators

Licensee's General Comments: 10/27/03 power change due to turbine rotor balancing was not reported as an unplanned power change with the 4th quarter 2003 submittal.

Unplanned Scrams per 7000 Critical Hrs



Thresholds: White > 3.0 Yellow > 6.0 Red > 25.0

Notes

Unplanned Scrams per 7000 Critical Hrs	3Q/02	4Q/02	1Q/03	2Q/03	3Q/03	4Q/03	1Q/04	2Q/04
Unplanned scrams	0	0	0	0	0	1.0	0	0
Critical hours	2208.0	2209.0	2160.0	2183.0	2208.0	1644.2	2184.0	2183.0
Indicator value	0.9	0	0	0	0	0.9	0.9	0.9

Licensee Comments: none

Scrams with Loss of Normal Heat Removal



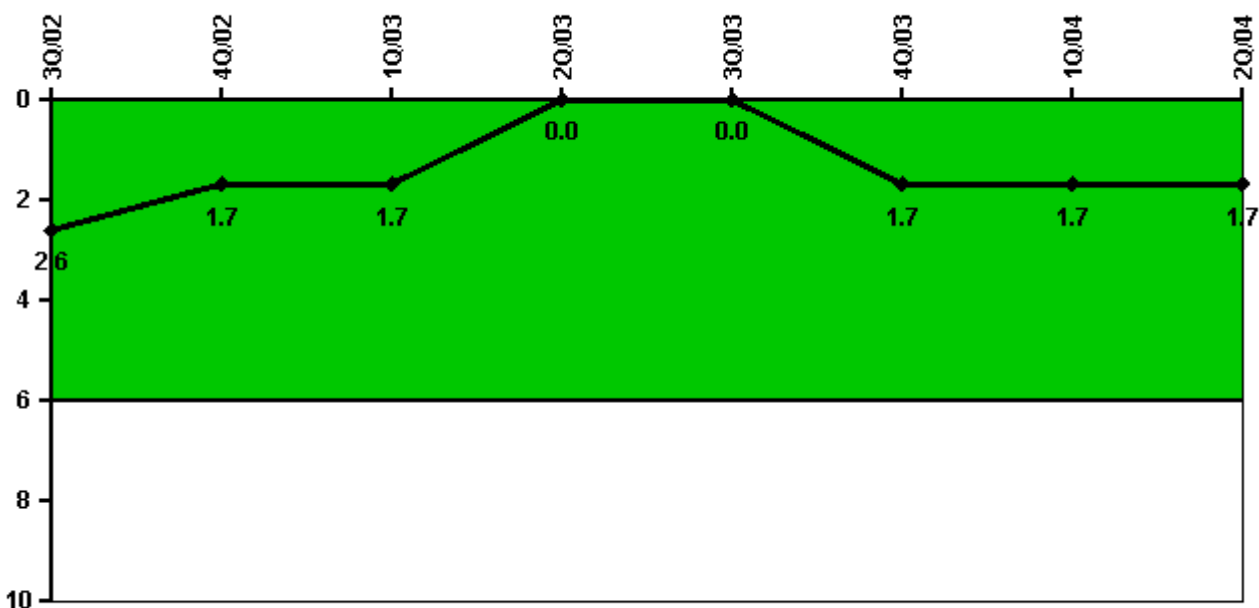
Thresholds: White > 2.0 Yellow > 10.0 Red > 20.0

Notes

Scrams with Loss of Normal Heat Removal	3Q/02	4Q/02	1Q/03	2Q/03	3Q/03	4Q/03	1Q/04	2Q/04
Scrams	0	0	0	0	0	0	0	0
Indicator value	1.0	1.0	1.0	1.0	1.0	1.0	0	0

Licensee Comments: none

Unplanned Power Changes per 7000 Critical Hrs



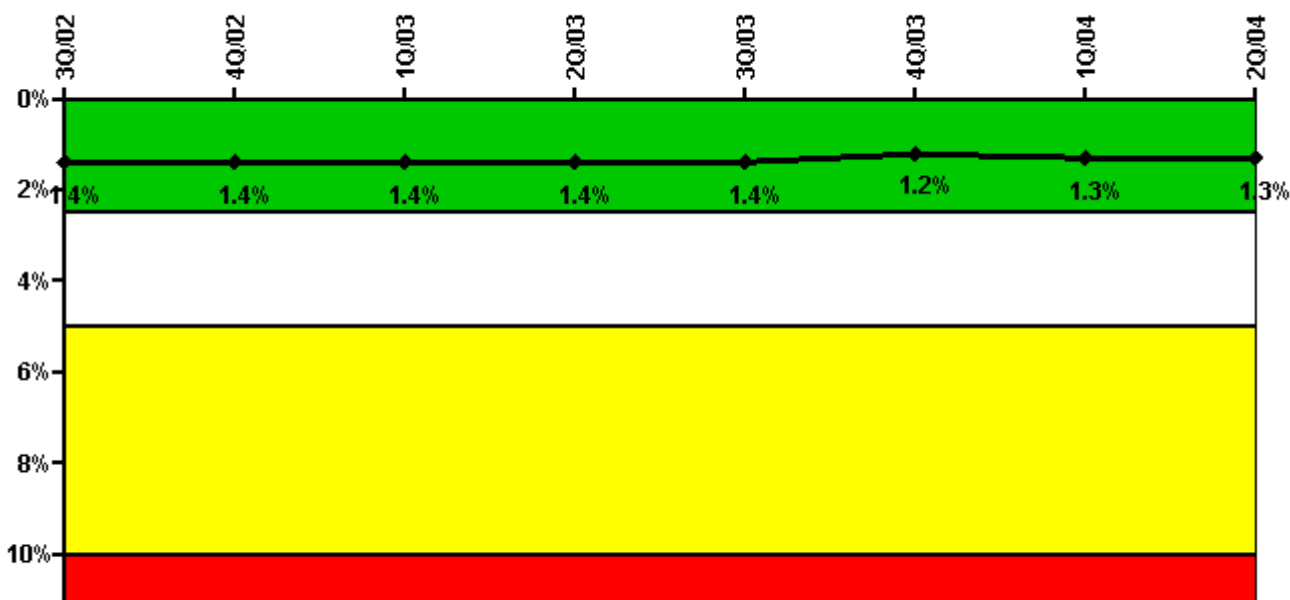
Thresholds: White > 6.0

Notes

Unplanned Power Changes per 7000 Critical Hrs	3Q/02	4Q/02	1Q/03	2Q/03	3Q/03	4Q/03	1Q/04	2Q/04
Unplanned power changes	0	0	0	0	0	2.0	0	0
Critical hours	2208.0	2209.0	2160.0	2183.0	2208.0	1644.2	2184.0	2183.0
Indicator value	2.6	1.7	1.7	0	0	1.7	1.7	1.7

Licensee Comments: none

Safety System Unavailability, Emergency AC Power



Thresholds: White > 2.5% Yellow > 5.0% Red > 10.0%

Notes

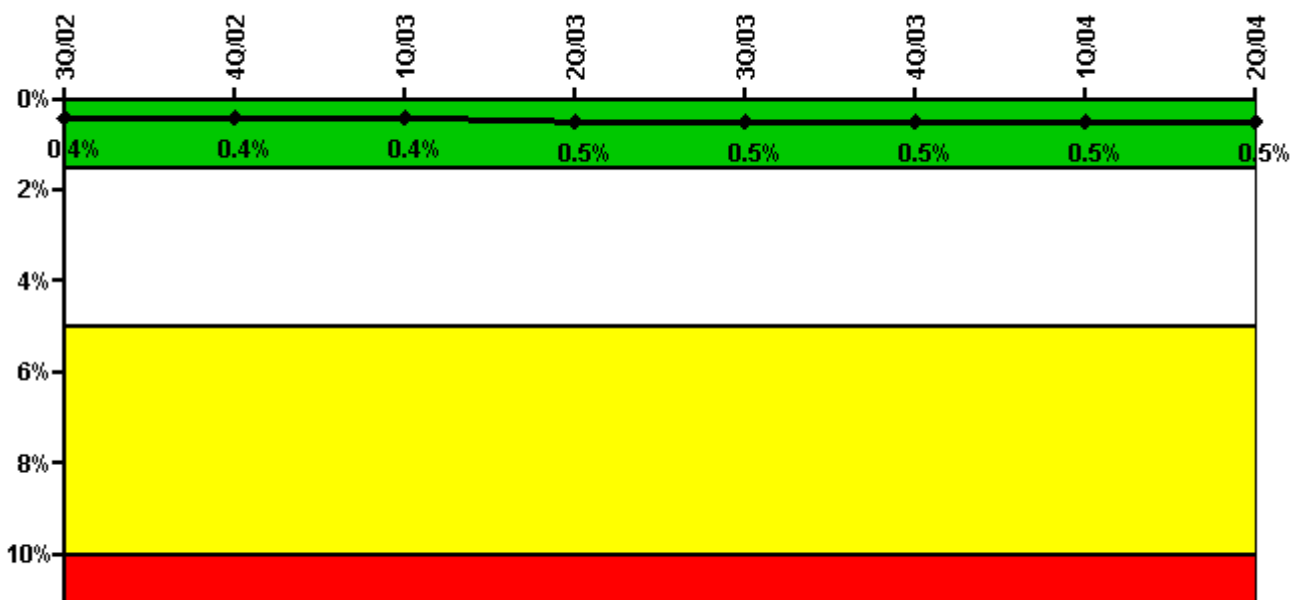
Safety System Unavailability, Emergency AC Power	3Q/02	4Q/02	1Q/03	2Q/03	3Q/03	4Q/03	1Q/04	2Q/04
Train 1								
Planned unavailable hours	19.02	21.65	3.53	36.33	4.50	3.43	6.48	31.42
Unplanned unavailable hours	16.32	5.32	0	35.47	0	13.55	17.03	18.28
Fault exposure hours	0	0	0	0	0	0	0	0
Effective Reset hours	0	0	0	0	0	0	0	0
Required hours	2208.00	2209.00	2160.00	2183.00	2208.00	1966.00	2184.00	2183.00
Train 2								
Planned unavailable hours	8.80	31.95	17.93	3.17	25.30	1.98	29.32	10.19
Unplanned unavailable hours	82.35	0	0	0	7.87	0	0	4.98
Fault exposure hours	0	0	0	0	0	0	0	0
Effective Reset hours	0	0	0	0	0	0	0	0
Required hours	2208.00	2209.00	2160.00	2183.00	2208.00	1966.00	2184.00	2183.00
Indicator value	1.4%	1.4%	1.4%	1.4%	1.4%	1.2%	1.3%	1.3%

Licensee Comments:

4Q/01: EDG"B" declared INOP for 5.3 hrs on 10/18/2001 to investigate and repair overheating electrical connectors (unplanned unavailability).

3Q/01: DG lubeoil spill resulted in 27.2 unplanned unavailible hours; cause is still under investigation.

Safety System Unavailability, High Pressure Injection System (HPSI)



Thresholds: White > 1.5% Yellow > 5.0% Red > 10.0%

Notes

Safety System Unavailability, High Pressure Injection System (HPSI)	3Q/02	4Q/02	1Q/03	2Q/03	3Q/03	4Q/03	1Q/04	2Q/04
Train 1								
Planned unavailable hours	3.07	22.70	13.18	2.77	27.68	2.74	20.02	4.03
Unplanned unavailable hours	0	0	0	0	0	0	0	0
Fault exposure hours	0	0	0	0	0	0	0	0
Effective Reset hours	0	0	0	0	0	0	0	0
Required hours	2208.00	2209.00	2160.00	2183.00	2208.00	1740.50	2184.00	2183.00
Train 2								
Planned unavailable hours	4.47	3.30	4.32	38.57	3.82	2.87	13.17	15.69
Unplanned unavailable hours	0	0	0	14.13	0	0	0	0
Fault exposure hours	0	0	0	0	0	0	0	0
Effective Reset hours	0	0	0	0	0	0	0	0
Required hours	2208.00	2209.00	2160.00	2183.00	2208.00	1740.50	2184.00	2183.00
Train 3								
Planned unavailable hours	3.25	3.90	19.54	13.61	5.35	1.84	6.97	3.63
Unplanned unavailable hours	0	0	0	0	0	0	0	0
Fault exposure hours	0	0	0	0	0	0	0	0
Effective Reset hours	0	0	0	0	0	0	0	0
Required hours	2208.00	2209.00	2160.00	2183.00	2208.00	1694.50	2184.00	2183.00
Train 4								
Planned unavailable hours	15.60	2.50	4.20	3.99	23.24	1.68	4.77	13.92
Unplanned unavailable hours	0	0	0	0	0	0	0	0
Fault exposure hours	0	0	0	0	0	0	0	0
Effective Reset hours	0	0	0	0	0	0	0	0
Required hours	2208.00	2209.00	2160.00	2183.00	2208.00	1694.50	2184.00	2183.00
Indicator value	0.4%	0.4%	0.4%	0.5%	0.5%	0.5%	0.5%	0.5%

Safety System Unavailability, Heat Removal System (AFW)



Thresholds: White > 2.0% Yellow > 6.0% Red > 12.0%

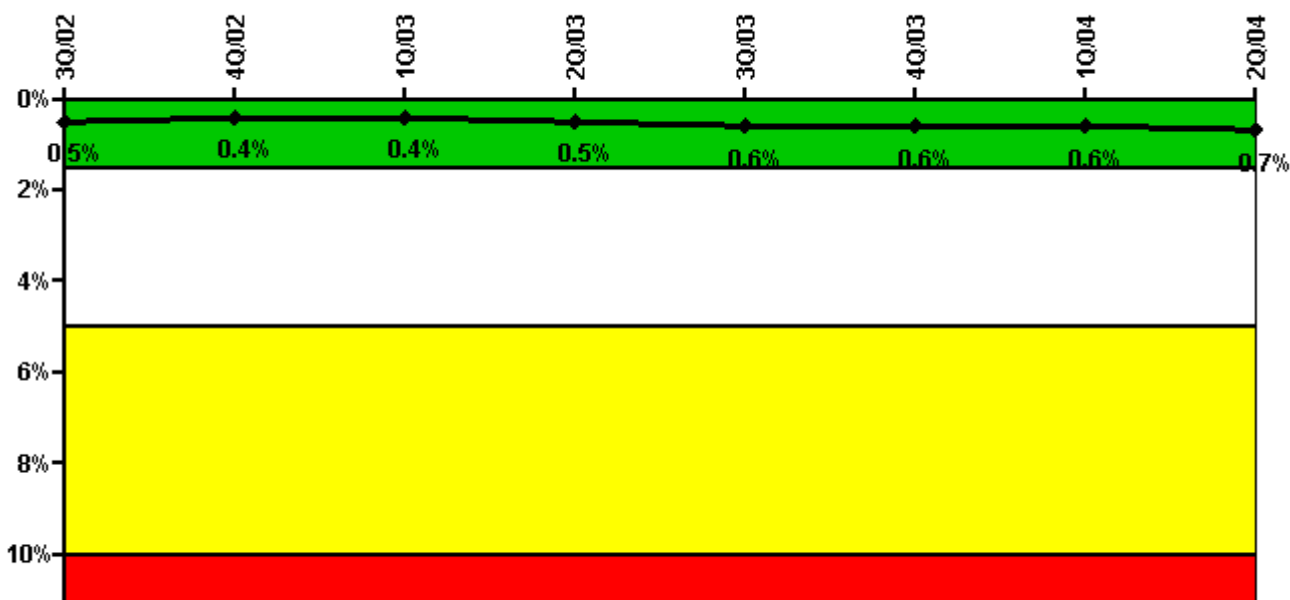
Notes

Safety System Unavailability, Heat Removal System (AFW)	3Q/02	4Q/02	1Q/03	2Q/03	3Q/03	4Q/03	1Q/04	2Q/04
Train 1								
Planned unavailable hours	8.66	3.82	5.93	3.22	3.21	5.49	3.56	13.08
Unplanned unavailable hours	0	0	0	0	0	14.78	0	8.03
Fault exposure hours	0	0	0	0	0	0	0	0
Effective Reset hours	0	0	0	0	0	0	0	0
Required hours	2208.00	2209.00	2160.00	2183.00	2208.00	1694.50	2184.00	2183.00
Train 2								
Planned unavailable hours	3.15	1.33	4.32	6.22	1.62	4.10	2.22	1.60
Unplanned unavailable hours	0	0.23	0	0	0	11.61	0	0
Fault exposure hours	0	0	0	0	0	0	0	0
Effective Reset hours	0	0	0	0	0	0	0	0
Required hours	2208.00	2209.00	2160.00	2183.00	2208.00	1694.50	2184.00	2183.00
Indicator value	0.7%	0.7%	0.7%	0.7%	0.7%	0.7%	0.5%	0.4%

Licensee Comments:

4Q/02: There were 3.90 hours of T/2 Fault Exposure hours associated with EFW Train "B".

Safety System Unavailability, Residual Heat Removal System



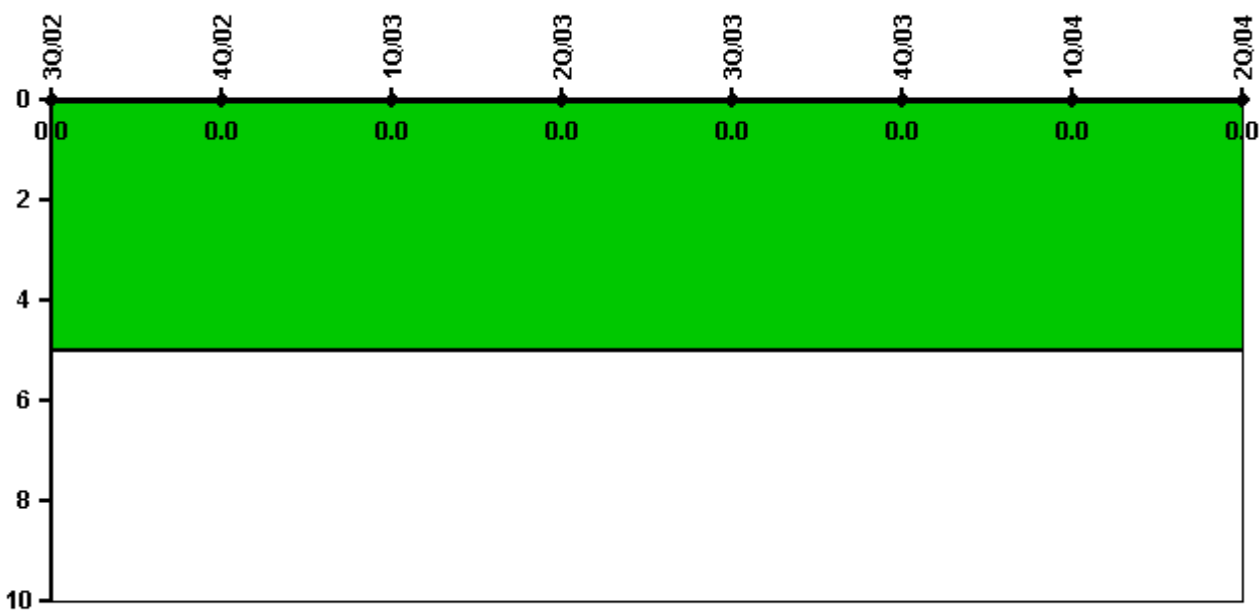
Thresholds: White > 1.5% Yellow > 5.0% Red > 10.0%

Notes

Safety System Unavailability, Residual Heat Removal System	3Q/02	4Q/02	1Q/03	2Q/03	3Q/03	4Q/03	1Q/04	2Q/04
Train 1								
Planned unavailable hours	21.04	8.00	12.27	26.91	29.49	5.30	6.54	40.93
Unplanned unavailable hours	0	0	0	0.08	0	0	0	0
Fault exposure hours	0	0	0	0	0	0	0	0
Effective Reset hours	0	0	0	0	0	0	0	0
Required hours	2208.00	2209.00	2160.00	2183.00	2208.00	1983.60	2184.00	2183.00
Train 2								
Planned unavailable hours	17.54	4.53	4.00	9.02	24.69	1.28	25.50	20.39
Unplanned unavailable hours	0	0	0.03	0	0	0	0	0
Fault exposure hours	0	0	0	0	0	0	0	0
Effective Reset hours	0	0	0	0	0	0	0	0
Required hours	2208.00	2209.00	2160.00	2183.00	2208.00	1983.60	2184.00	2183.00
Indicator value	0.5%	0.4%	0.4%	0.5%	0.6%	0.6%	0.6%	0.7%

Licensee Comments: none

Safety System Functional Failures (PWR)



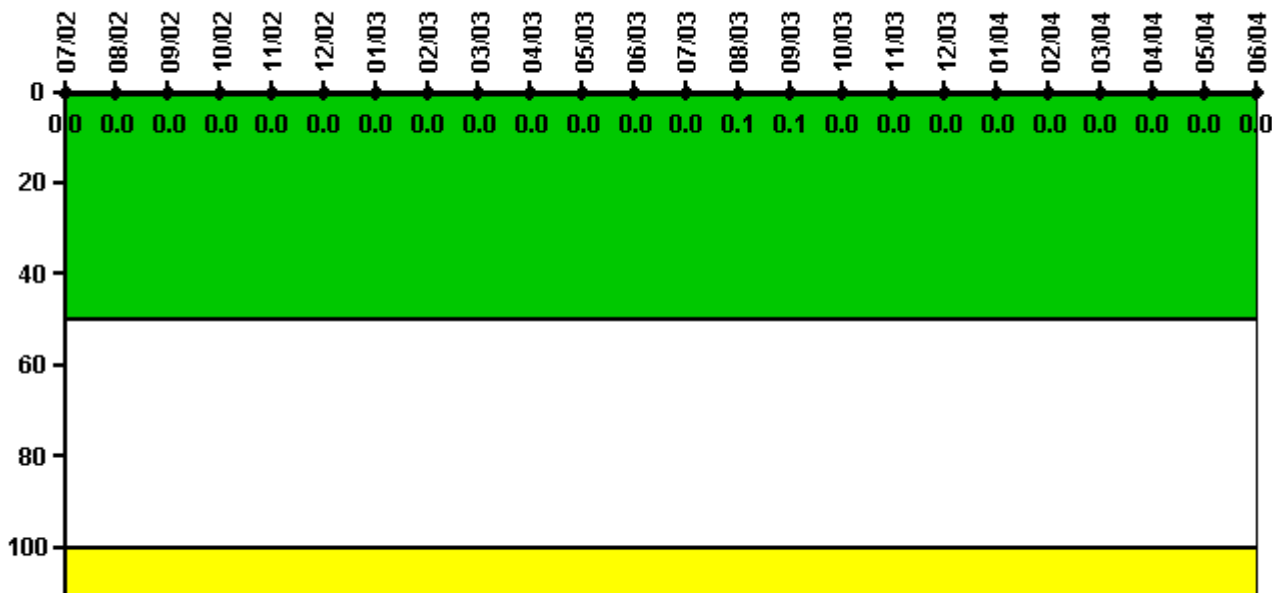
Thresholds: White > 5.0

Notes

Safety System Functional Failures (PWR)	3Q/02	4Q/02	1Q/03	2Q/03	3Q/03	4Q/03	1Q/04	2Q/04
Safety System Functional Failures	0	0	0	0	0	0	0	0
Indicator value	0	0	0	0	0	0	0	0

Licensee Comments: none

Reactor Coolant System Activity



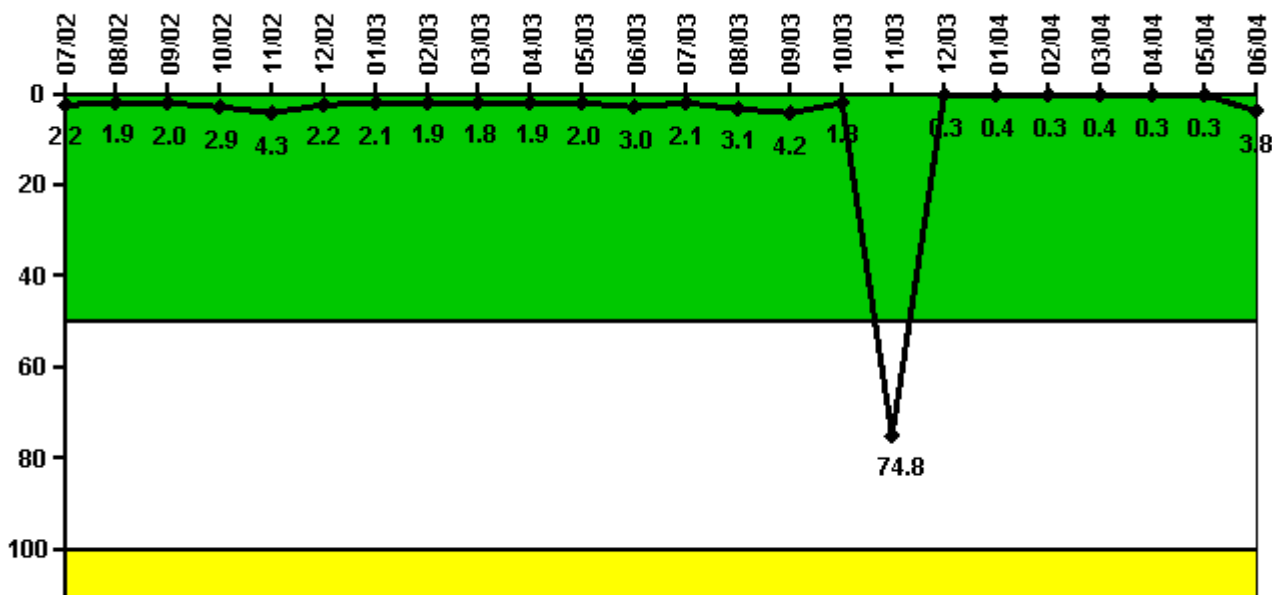
Thresholds: White > 50.0 Yellow > 100.0

Notes

Reactor Coolant System Activity	7/02	8/02	9/02	10/02	11/02	12/02	1/03	2/03	3/03	4/03	5/03	6/03
Maximum activity	0.000165	0.000164	0.000177	0.000192	0.000254	0.000215	0.000209	0.000210	0.000236	0.000219	0.000245	0.000263
Technical specification limit	1.0	1.0	1.0	1.0	1.0	1.0	1.0	1.0	1.0	1.0	1.0	1.0
Indicator value	0	0	0	0	0	0	0	0	0	0	0	0
Reactor Coolant System Activity	7/03	8/03	9/03	10/03	11/03	12/03	1/04	2/04	3/04	4/04	5/04	6/04
Maximum activity	0.000238	0.000596	0.000903	0	0.000103	0.000126	0.000140	0.000134	0.000155	0.000144	0.000156	0.000161
Technical specification limit	1.0	1.0	1.0	1.0	1.0	1.0	1.0	1.0	1.0	1.0	1.0	1.0
Indicator value	0	0.1	0.1	0	0	0	0	0	0	0	0	0

Licensee Comments: none

Reactor Coolant System Leakage



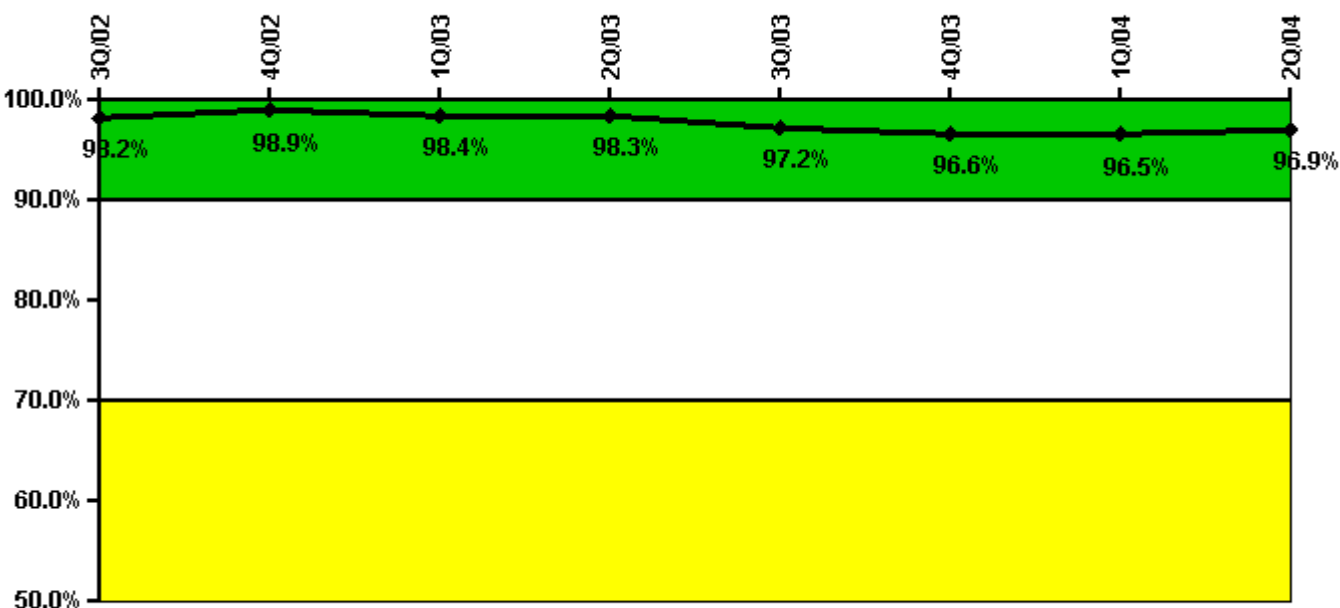
Thresholds: White > 50.0 Yellow > 100.0

Notes

Reactor Coolant System Leakage	7/02	8/02	9/02	10/02	11/02	12/02	1/03	2/03	3/03	4/03	5/03	6/03
Maximum leakage	0.220	0.190	0.200	0.290	0.430	0.220	0.210	0.190	0.180	0.190	0.200	0.300
Technical specification limit	10.0	10.0	10.0	10.0	10.0	10.0	10.0	10.0	10.0	10.0	10.0	10.0
Indicator value	2.2	1.9	2.0	2.9	4.3	2.2	2.1	1.9	1.8	1.9	2.0	3.0
Reactor Coolant System Leakage	7/03	8/03	9/03	10/03	11/03	12/03	1/04	2/04	3/04	4/04	5/04	6/04
Maximum leakage	0.210	0.310	0.420	0.180	7.478	0.030	0.040	0.030	0.040	0.030	0.030	0.380
Technical specification limit	10.0	10.0	10.0	10.0	10.0	10.0	10.0	10.0	10.0	10.0	10.0	10.0
Indicator value	2.1	3.1	4.2	1.8	74.8	0.3	0.4	0.3	0.4	0.3	0.3	3.8

Licensee Comments: none

Drill/Exercise Performance



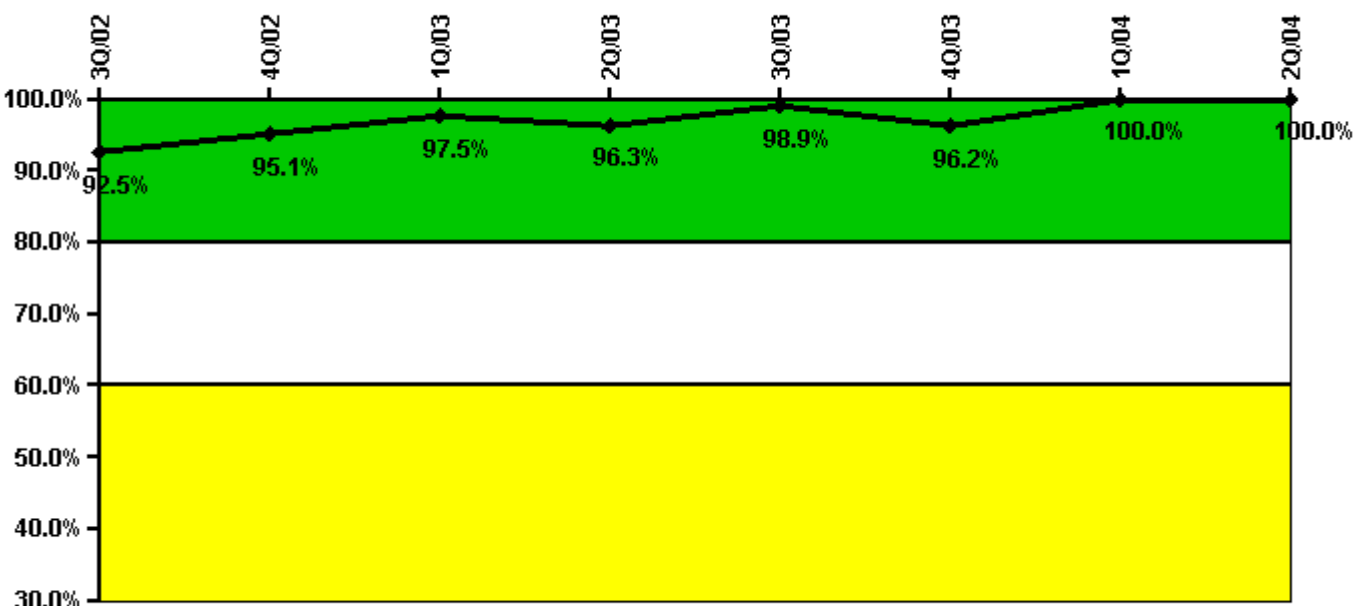
Thresholds: White < 90.0% Yellow < 70.0%

Notes

Drill/Exercise Performance	3Q/02	4Q/02	1Q/03	2Q/03	3Q/03	4Q/03	1Q/04	2Q/04
Successful opportunities	26.0	46.0	18.0	13.0	25.0	21.0	13.0	27.0
Total opportunities	26.0	47.0	19.0	13.0	27.0	23.0	13.0	27.0
Indicator value	98.2%	98.9%	98.4%	98.3%	97.2%	96.6%	96.5%	96.9%

Licensee Comments: none

ERO Drill Participation



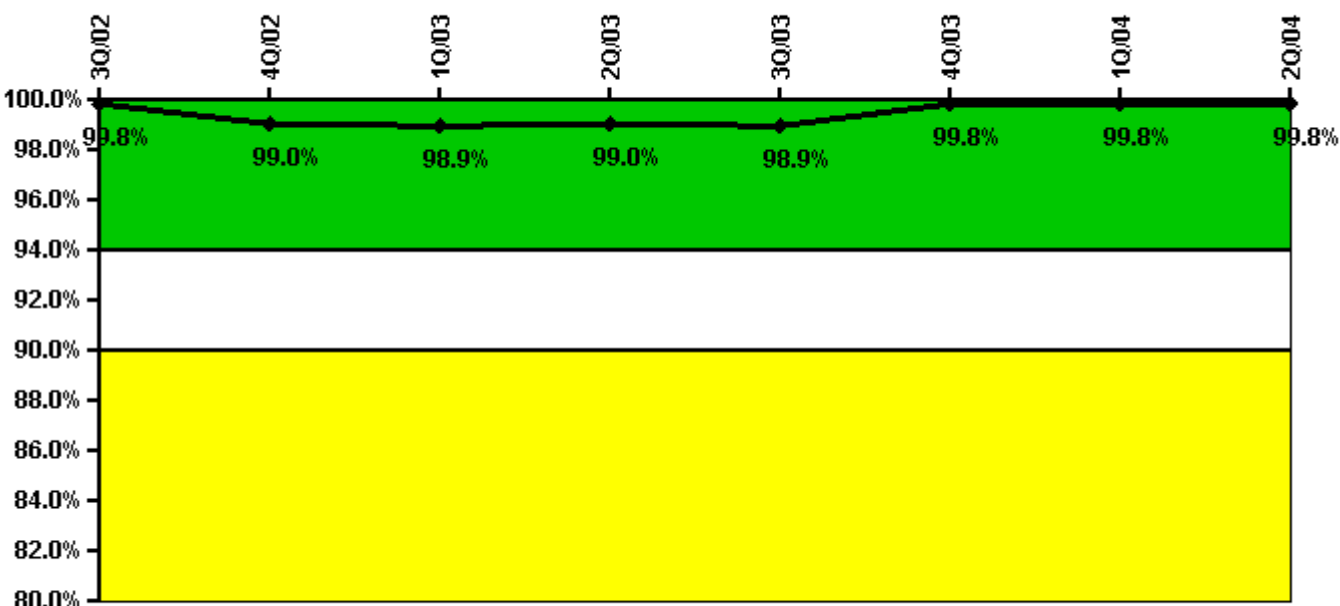
Thresholds: White < 80.0% Yellow < 60.0%

Notes

ERO Drill Participation	3Q/02	4Q/02	1Q/03	2Q/03	3Q/03	4Q/03	1Q/04	2Q/04
Participating Key personnel	74.0	77.0	79.0	77.0	86.0	75.0	82.0	78.0
Total Key personnel	80.0	81.0	81.0	80.0	87.0	78.0	82.0	78.0
Indicator value	92.5%	95.1%	97.5%	96.3%	98.9%	96.2%	100.0%	100.0%

Licensee Comments: none

Alert & Notification System



Thresholds: White < 94.0% Yellow < 90.0%

Notes

Alert & Notification System	3Q/02	4Q/02	1Q/03	2Q/03	3Q/03	4Q/03	1Q/04	2Q/04
Successful siren-tests	846	698	724	846	723	846	725	846
Total sirens-tests	847	726	726	847	726	847	726	847
Indicator value	99.8%	99.0%	98.9%	99.0%	98.9%	99.8%	99.8%	99.8%

Licensee Comments: none

Occupational Exposure Control Effectiveness



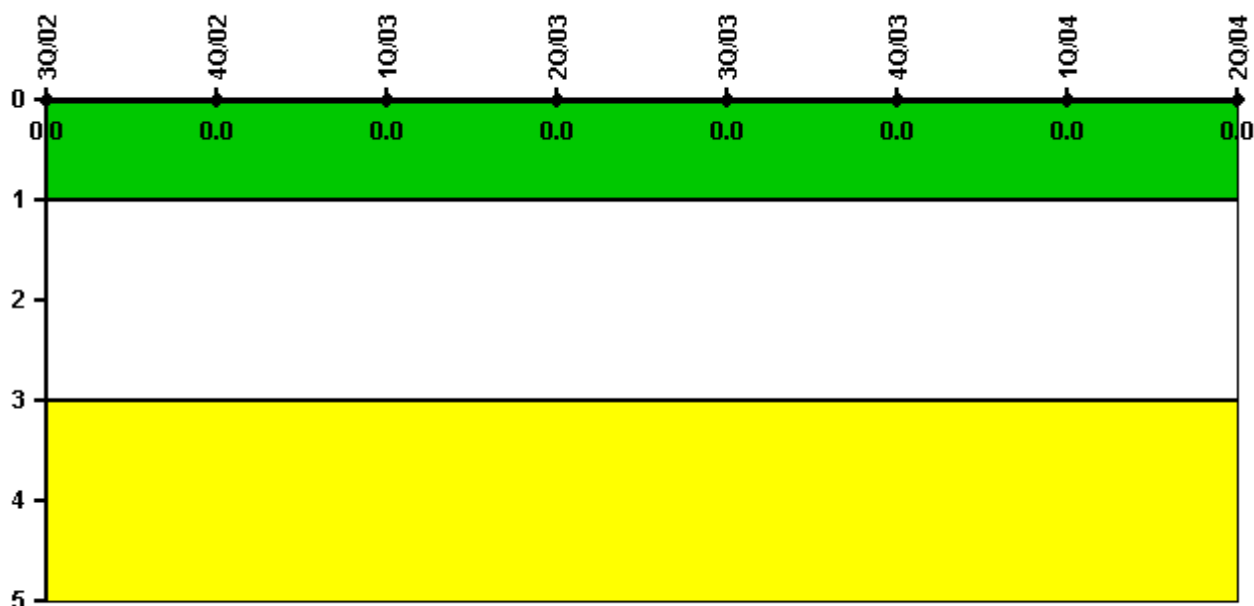
Thresholds: White > 2.0 Yellow > 5.0

Notes

Occupational Exposure Control Effectiveness	3Q/02	4Q/02	1Q/03	2Q/03	3Q/03	4Q/03	1Q/04	2Q/04
High radiation area occurrences	0	0	0	0	0	0	0	0
Very high radiation area occurrences	0	0	0	0	0	0	0	0
Unintended exposure occurrences	0	0	0	0	0	0	0	0
Indicator value	0	0	0	0	0	0	0	0

Licensee Comments: none

RETS/ODCM Radiological Effluent



Thresholds: White > 1.0 Yellow > 3.0

Notes

RETS/ODCM Radiological Effluent	3Q/02	4Q/02	1Q/03	2Q/03	3Q/03	4Q/03	1Q/04	2Q/04
RETS/ODCM occurrences	0	0	0	0	0	0	0	0
Indicator value	0	0	0	0	0	0	0	0

Licensee Comments: none

[Physical Protection](#) information not publicly available.

▲ [Action Matrix Summary](#) | [Inspection Findings Summary](#) | [PI Summary](#) | [Reactor Oversight Process](#)

Last Modified: September 8, 2004