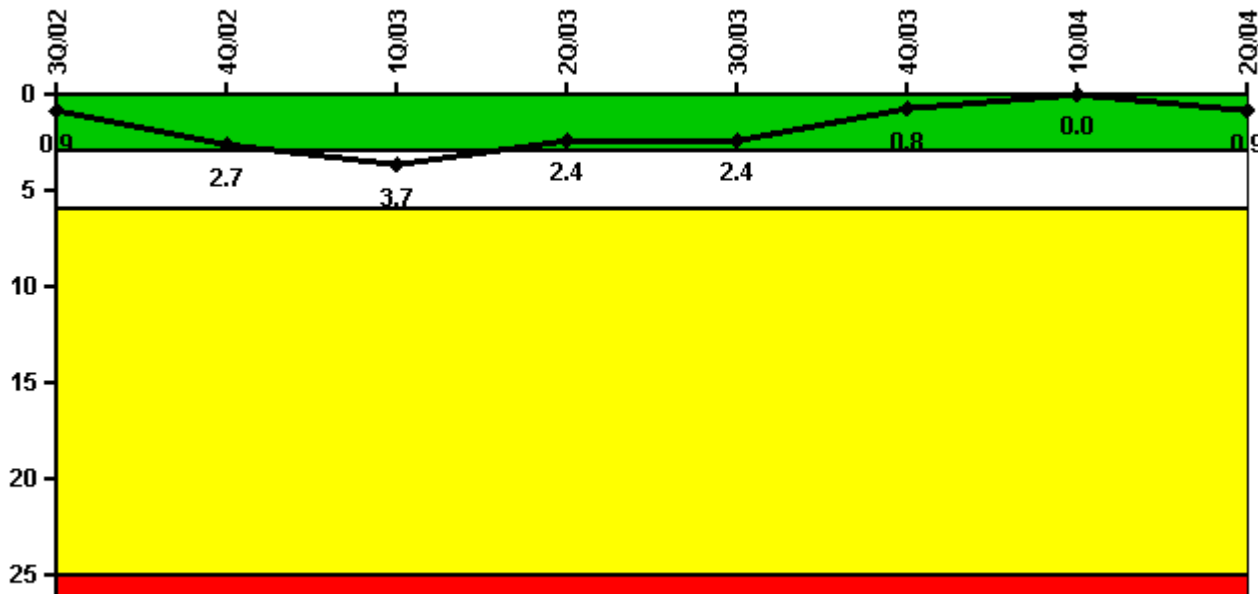


San Onofre 2

2Q/2004 Performance Indicators

Licensee's General Comments: EP01: SCE incorrectly counted classifications made by Shift Managers who do not perform the Shift Manager function within the SONGS Emergency Response Organization. This error affected the first three quarters of 2003. MS05: SCE re-assessed the data submitted for MS05 using a more conservative definition of a Safety System Functional Failure (SSFF). Two LERs were re-characterized as SSFFs affecting 3Q2000 and 4Q2001.

Unplanned Scrams per 7000 Critical Hrs



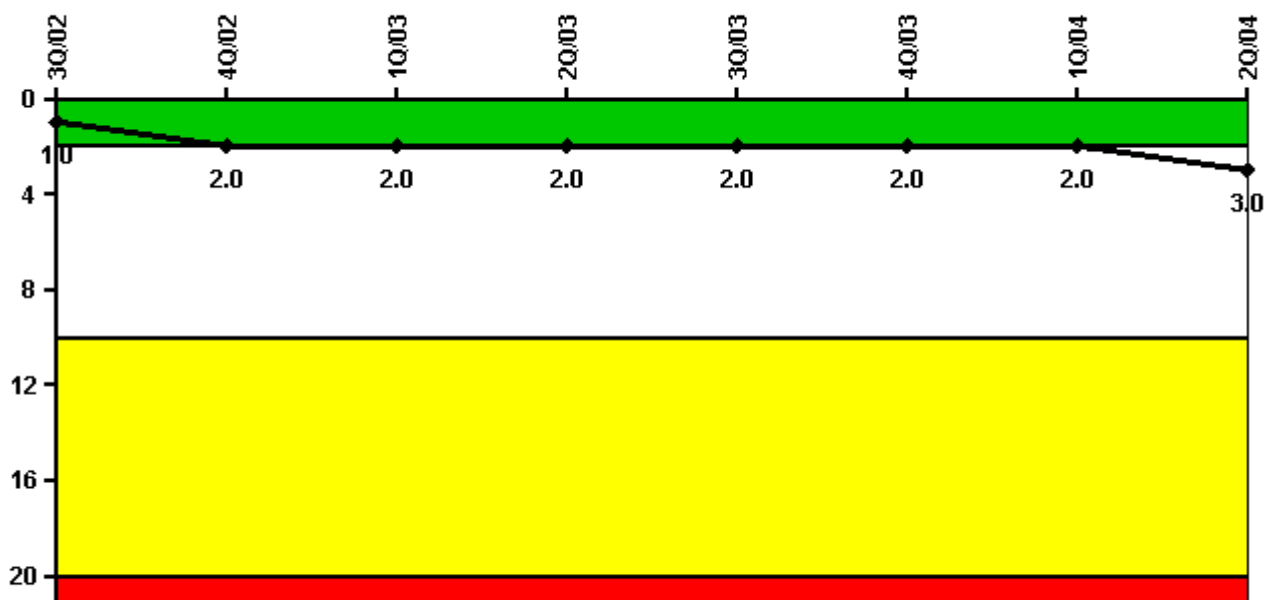
Thresholds: White > 3.0 Yellow > 6.0 Red > 25.0

Notes

Unplanned Scrams per 7000 Critical Hrs	3Q/02	4Q/02	1Q/03	2Q/03	3Q/03	4Q/03	1Q/04	2Q/04
Unplanned scrams	0	2.0	1.0	0	0	0	0	1.0
Critical hours	2190.4	2124.1	2147.1	2139.7	2208.0	2209.0	977.7	2091.9
Indicator value	0.9	2.7	3.7	2.4	2.4	0.8	0	0.9

Licensee Comments: none

Scrams with Loss of Normal Heat Removal



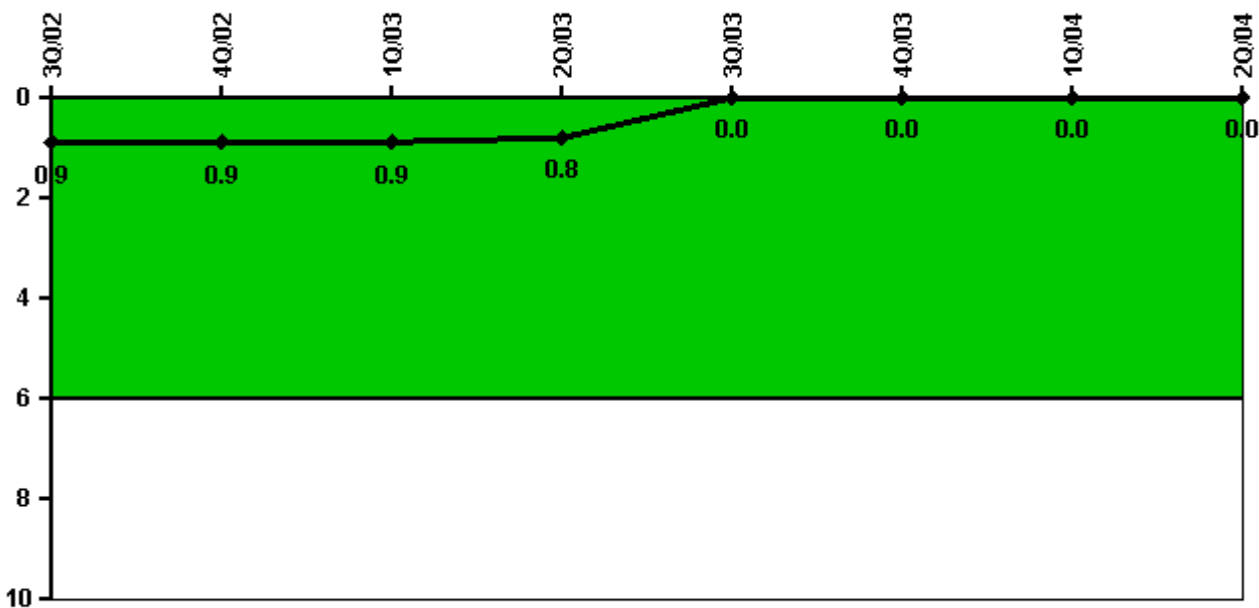
Thresholds: White > 2.0 Yellow > 10.0 Red > 20.0

Notes

Scrams with Loss of Normal Heat Removal	3Q/02	4Q/02	1Q/03	2Q/03	3Q/03	4Q/03	1Q/04	2Q/04
Scrams	0	1.0	0	0	0	0	0	1.0
Indicator value	1.0	2.0	2.0	2.0	2.0	2.0	2.0	3.0

Licensee Comments: none

Unplanned Power Changes per 7000 Critical Hrs



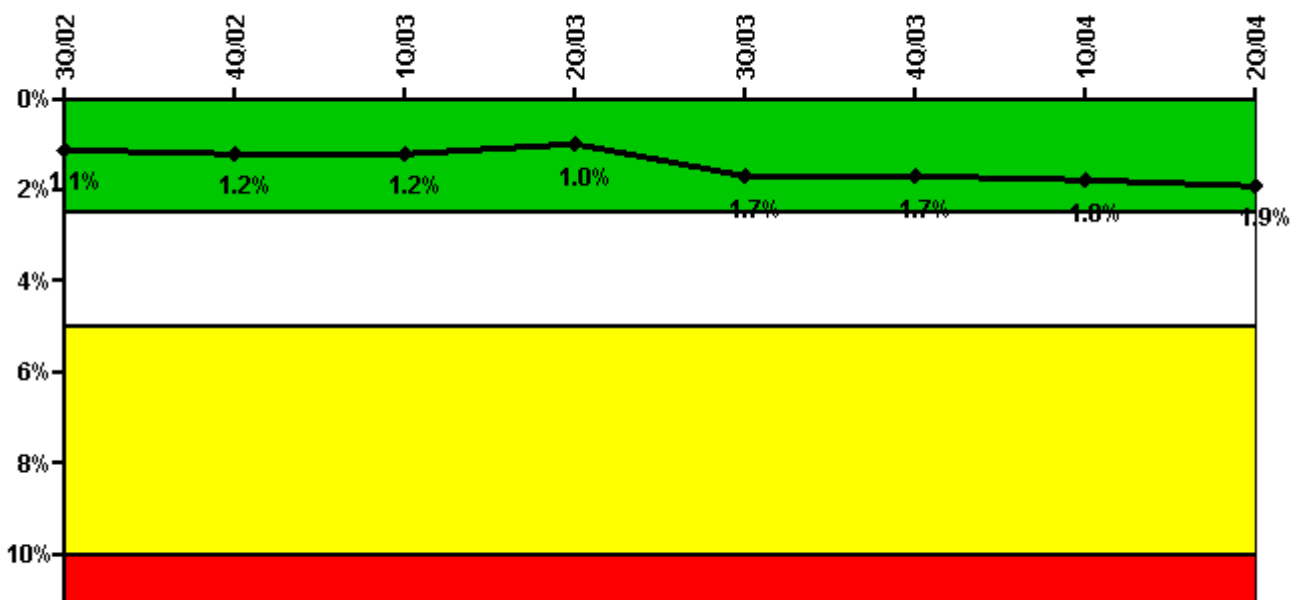
Thresholds: White > 6.0

Notes

Unplanned Power Changes per 7000 Critical Hrs	3Q/02	4Q/02	1Q/03	2Q/03	3Q/03	4Q/03	1Q/04	2Q/04
Unplanned power changes	1.0	0	0	0	0	0	0	0
Critical hours	2190.4	2124.1	2147.1	2139.7	2208.0	2209.0	977.7	2091.9
Indicator value	0.9	0.9	0.9	0.8	0	0	0	0

Licensee Comments: none

Safety System Unavailability, Emergency AC Power



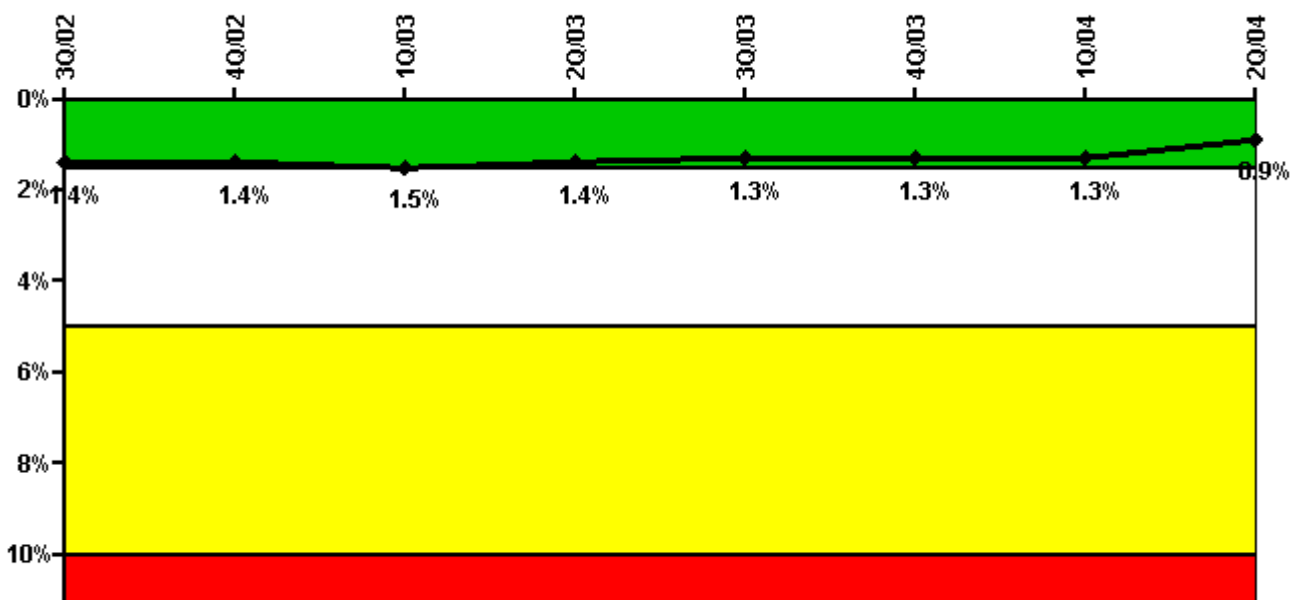
Thresholds: White > 2.5% Yellow > 5.0% Red > 10.0%

Notes

Safety System Unavailability, Emergency AC Power	3Q/02	4Q/02	1Q/03	2Q/03	3Q/03	4Q/03	1Q/04	2Q/04
Train 1								
Planned unavailable hours	79.08	27.82	1.72	2.22	177.12	25.38	48.96	1.85
Unplanned unavailable hours	0	0	0	0	83.65	0	16.35	39.33
Fault exposure hours	0	0	0	0	0	0	0	0
Effective Reset hours	0	0	0	0	0	0	0	0
Required hours	2208.00	2209.00	2160.00	2183.00	2208.00	2209.00	2184.00	2183.00
Train 2								
Planned unavailable hours	1.32	51.80	2.35	1.02	162.57	64.04	3.82	3.13
Unplanned unavailable hours	0	0	0	0	35.58	0	10.72	0
Fault exposure hours	0	0	0	0	0	0	0	0
Effective Reset hours	0	0	0	0	0	0	0	0
Required hours	2208.00	2209.00	2160.00	2183.00	2208.00	2209.00	2184.00	2183.00
Indicator value	1.1%	1.2%	1.2%	1.0%	1.7%	1.7%	1.8%	1.9%

Licensee Comments: none

Safety System Unavailability, High Pressure Injection System (HPSI)



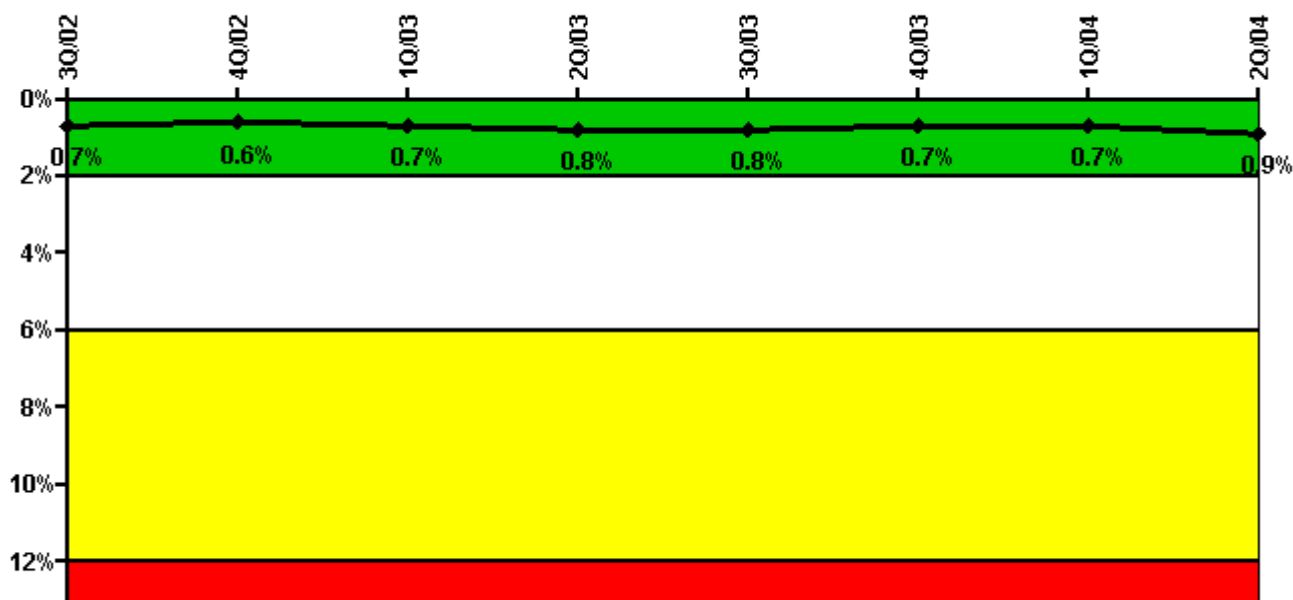
Thresholds: White > 1.5% Yellow > 5.0% Red > 10.0%

Notes

Safety System Unavailability, High Pressure Injection System (HPSI)	3Q/02	4Q/02	1Q/03	2Q/03	3Q/03	4Q/03	1Q/04	2Q/04
Train 1								
Planned unavailable hours	13.43	10.38	0.25	28.48	0.30	2.35	0.17	2.69
Unplanned unavailable hours	0.93	0	16.85	0	0	3.50	1.53	1.57
Fault exposure hours	0	0	0	0	0	0	0	0
Effective Reset hours	0	0	0	0	0	0	0	0
Required hours	2190.43	2124.09	2147.08	2139.68	2208.00	2209.00	977.73	2091.88
Train 2								
Planned unavailable hours	14.15	13.40	29.24	3.33	1.58	19.43	2.05	2.32
Unplanned unavailable hours	4.02	5.53	1.67	1.82	0	0	1.13	0
Fault exposure hours	0	0	0	0	0	0	0	0
Effective Reset hours	0	0	0	0	0	0	0	0
Required hours	2190.43	2124.09	2147.08	2139.68	2208.00	2209.00	977.73	2091.88
Indicator value	1.4%	1.4%	1.5%	1.4%	1.3%	1.3%	1.3%	0.9%

Licensee Comments: none

Safety System Unavailability, Heat Removal System (AFW)



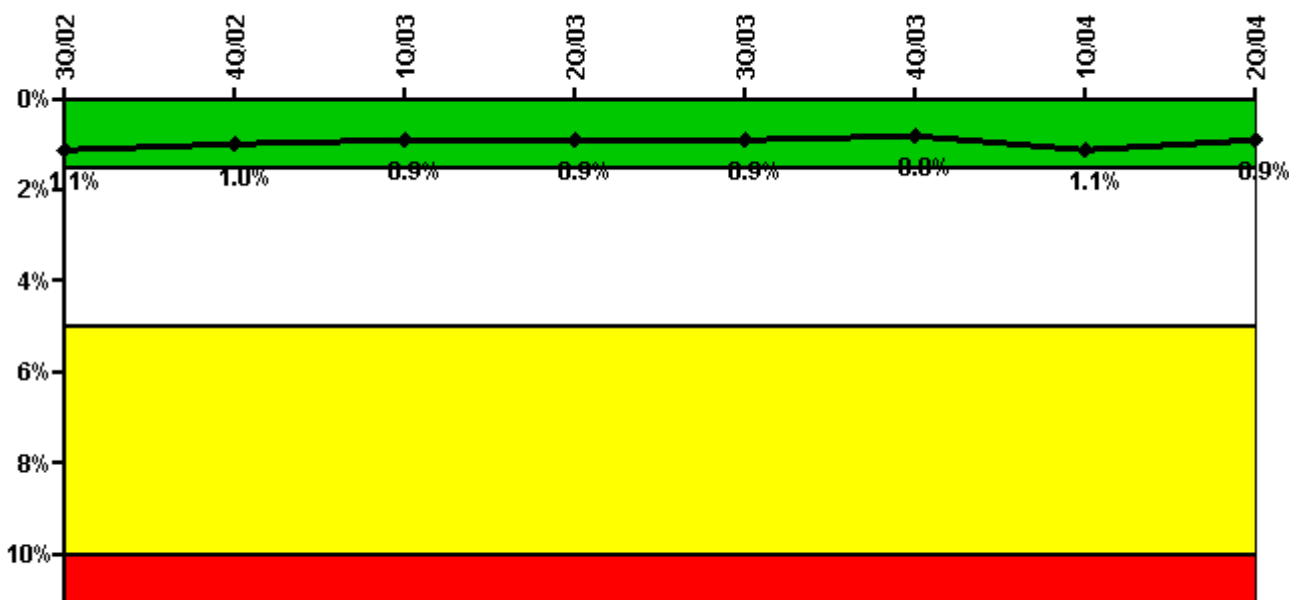
Thresholds: White > 2.0% Yellow > 6.0% Red > 12.0%

Notes

Safety System Unavailability, Heat Removal System (AFW)	3Q/02	4Q/02	1Q/03	2Q/03	3Q/03	4Q/03	1Q/04	2Q/04
Train 1								
Planned unavailable hours	45.43	1.42	0.50	30.00	13.58	0.70	0.55	17.33
Unplanned unavailable hours	0	0	0	0	0	0	0	39.02
Fault exposure hours	0	0	0	0	0	0	0	0
Effective Reset hours	0	0	0	0	0	0	0	0
Required hours	2190.43	2124.09	2147.08	2139.68	2208.00	2209.00	977.73	2091.88
Train 2								
Planned unavailable hours	6.03	23.75	0	17.80	11.15	15.15	0.95	0.42
Unplanned unavailable hours	0	0	65.25	0	0	0	0	0
Fault exposure hours	0	0	0	0	0	0	0	0
Effective Reset hours	0	0	0	0	0	0	0	0
Required hours	2190.43	2124.09	2147.08	2139.68	2208.00	2209.00	977.73	2091.88
Train 3								
Planned unavailable hours	16.77	0.25	0.77	37.92	17.07	0	15.42	43.35
Unplanned unavailable hours	0	0	0	0	0	0	0	14.58
Fault exposure hours	0	0	0	0	0	0	0	0
Effective Reset hours	0	0	0	0	0	0	0	0
Required hours	2190.43	2124.09	2147.08	2139.68	2208.00	2209.00	977.73	2091.88
Indicator value	0.7%	0.6%	0.7%	0.8%	0.8%	0.7%	0.7%	0.9%

Licensee Comments: none

Safety System Unavailability, Residual Heat Removal System

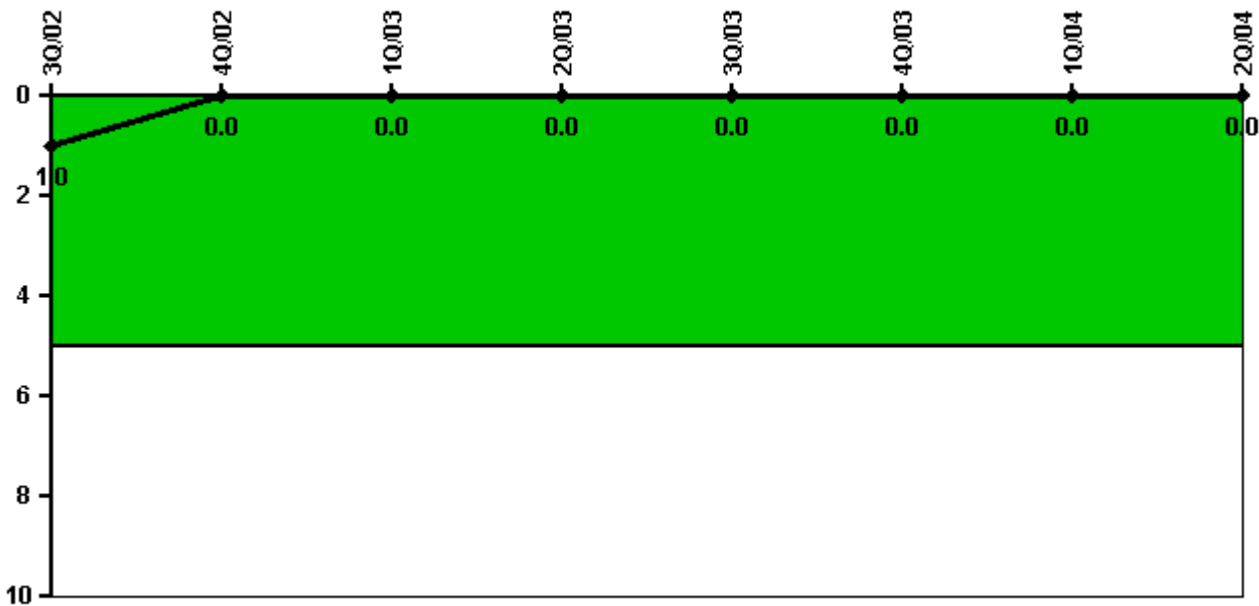


Thresholds: White > 1.5% Yellow > 5.0% Red > 10.0%

Notes

Safety System Unavailability, Residual Heat Removal System	3Q/02	4Q/02	1Q/03	2Q/03	3Q/03	4Q/03	1Q/04	2Q/04
Train 1								
Planned unavailable hours	67.30	12.65	0.25	25.45	8.88	2.30	0.17	12.39
Unplanned unavailable hours	0.93	0	16.85	0	0	3.50	1.53	1.57
Fault exposure hours	0	0	0	0	0	0	0	0
Effective Reset hours	0	0	0	0	0	0	0	0
Required hours	2208.00	2209.00	2160.00	2157.05	2208.00	2209.00	1042.69	2144.47
Train 2								
Planned unavailable hours	44.43	3.35	38.47	20.77	19.20	19.43	1.00	2.62
Unplanned unavailable hours	4.02	4.78	1.67	1.82	0	0	1.13	0
Fault exposure hours	0	0	0	0	0	0	0	0
Effective Reset hours	0	0	0	0	0	0	0	0
Required hours	2208.00	2209.00	2160.00	2157.05	2208.00	2209.00	1042.69	2144.47
Train 3								
Planned unavailable hours	0	0	0	0	0	0	22.25	0
Unplanned unavailable hours	0	0	0	0	0	0	0	0
Fault exposure hours	0	0	0	0	0	0	0	0
Effective Reset hours	0	0	0	0	0	0	0	0
Required hours	0	0	0	25.95	0	0	1141.31	38.53
Train 4								
Planned unavailable hours	0	0	0	0	0	0	0	0
Unplanned unavailable hours	0	0	0	0	0	0	0	0.67
Fault exposure hours	0	0	0	0	0	0	0	0
Effective Reset hours	0	0	0	0	0	0	0	0
Required hours	0	0	0	25.95	0	0	1141.31	38.53
Indicator value	1.1%	1.0%	0.9%	0.9%	0.9%	0.8%	1.1%	0.9%

Safety System Functional Failures (PWR)



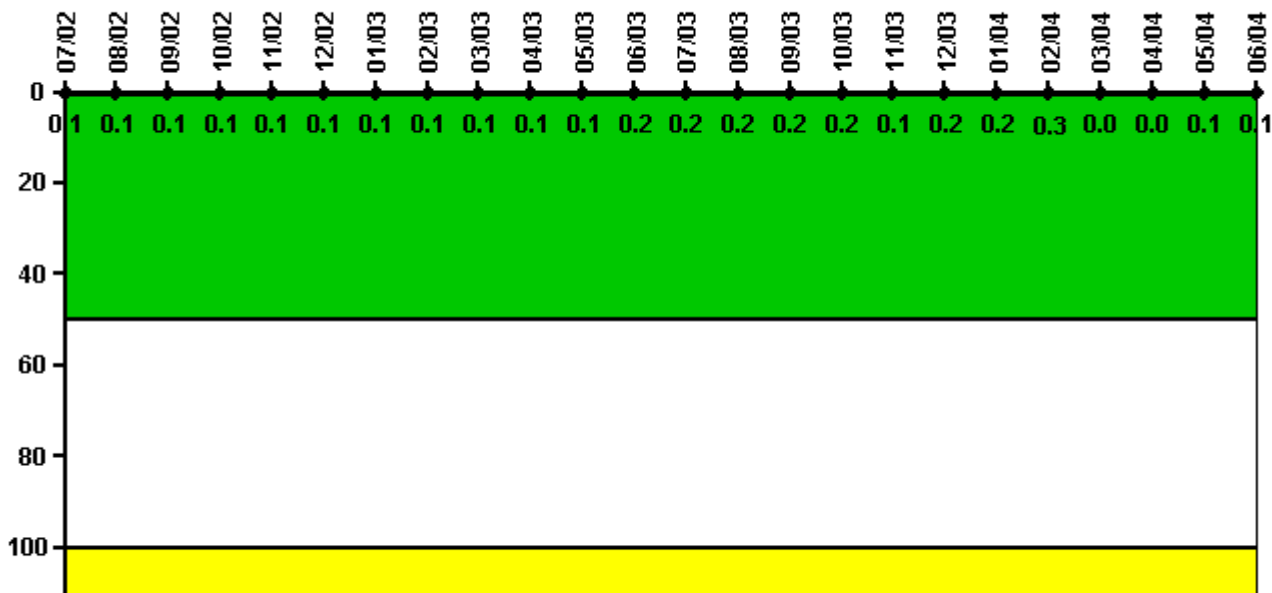
Thresholds: White > 5.0

Notes

Safety System Functional Failures (PWR)	3Q/02	4Q/02	1Q/03	2Q/03	3Q/03	4Q/03	1Q/04	2Q/04
Safety System Functional Failures	0	0	0	0	0	0	0	0
Indicator value	1	0	0	0	0	0	0	0

Licensee Comments: none

Reactor Coolant System Activity



Thresholds: White > 50.0 Yellow > 100.0

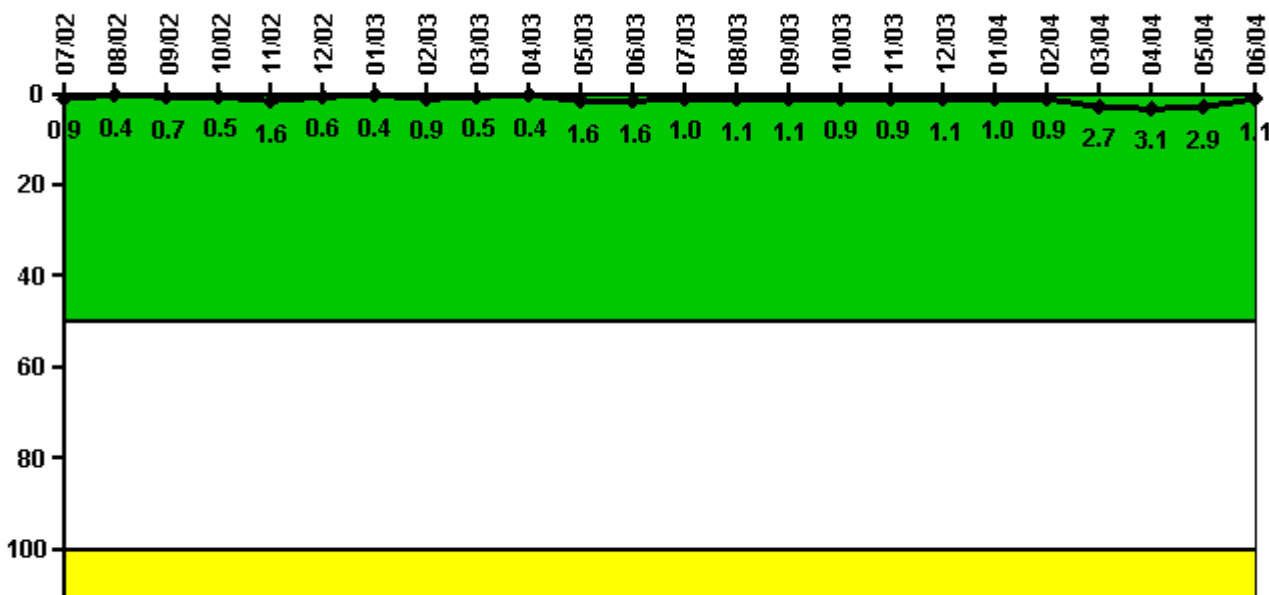
Notes

Reactor Coolant System Activity	7/02	8/02	9/02	10/02	11/02	12/02	1/03	2/03	3/03	4/03	5/03	6/03
Maximum activity	0.001000	0.001000	0.001000	0.001000	0.001000	0.001000	0.001000	0.001000	0.001000	0.001000	0.001000	0.002000
Technical specification limit	1.0	1.0	1.0	1.0	1.0	1.0	1.0	1.0	1.0	1.0	1.0	1.0
Indicator value	0.1	0.1	0.1	0.1	0.1	0.1	0.1	0.1	0.1	0.1	0.1	0.2

Reactor Coolant System Activity	7/03	8/03	9/03	10/03	11/03	12/03	1/04	2/04	3/04	4/04	5/04	6/04
Maximum activity	0.002000	0.002000	0.002000	0.001500	0.001480	0.001500	0.001500	0.003270	0	0.000427	0.000503	0.000524
Technical specification limit	1.0	1.0	1.0	1.0	1.0	1.0	1.0	1.0	1.0	1.0	1.0	1.0
Indicator value	0.2	0.2	0.2	0.2	0.1	0.2	0.2	0.3	0	0	0.1	0.1

Licensee Comments: none

Reactor Coolant System Leakage



Thresholds: White > 50.0 Yellow > 100.0

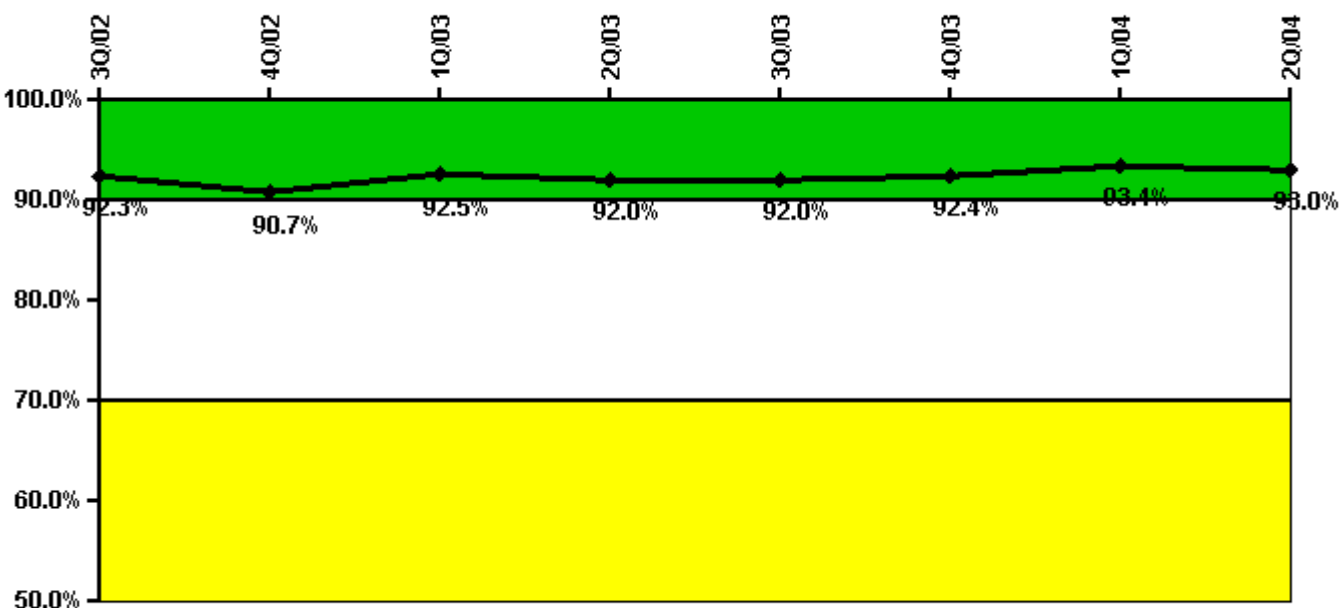
Notes

Reactor Coolant System Leakage	7/02	8/02	9/02	10/02	11/02	12/02	1/03	2/03	3/03	4/03	5/03	6/03
Maximum leakage	0.090	0.040	0.070	0.050	0.160	0.060	0.040	0.090	0.050	0.040	0.160	0.160
Technical specification limit	10.0	10.0	10.0	10.0	10.0	10.0	10.0	10.0	10.0	10.0	10.0	10.0
Indicator value	0.9	0.4	0.7	0.5	1.6	0.6	0.4	0.9	0.5	0.4	1.6	1.6
Reactor Coolant System Leakage	7/03	8/03	9/03	10/03	11/03	12/03	1/04	2/04	3/04	4/04	5/04	6/04
Maximum leakage	0.100	0.110	0.110	0.090	0.090	0.110	0.100	0.090	0.270	0.310	0.290	0.110
Technical specification limit	10.0	10.0	10.0	10.0	10.0	10.0	10.0	10.0	10.0	10.0	10.0	10.0
Indicator value	1.0	1.1	1.1	0.9	0.9	1.1	1.0	0.9	2.7	3.1	2.9	1.1

Licensee Comments:

6/04: Effective May 2003 the RCS Leakage being recorded is RCS TOTAL leakage versus RCS IDENTIFIED leakage. RCS Identified Leakage is generated only when RCS Total Leakage exceeds 1 GPM.

Drill/Exercise Performance



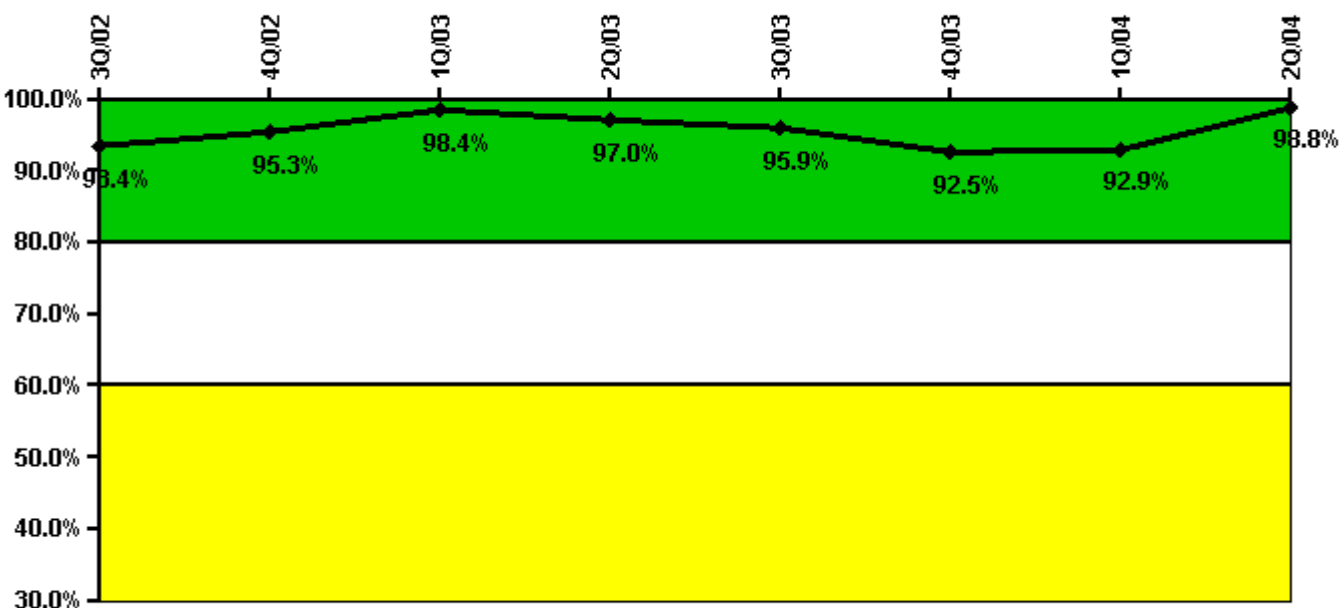
Thresholds: White < 90.0% Yellow < 70.0%

Notes

Drill/Exercise Performance	3Q/02	4Q/02	1Q/03	2Q/03	3Q/03	4Q/03	1Q/04	2Q/04
Successful opportunities	39.0	11.0	43.0	48.0	19.0	9.0	0	42.0
Total opportunities	43.0	14.0	44.0	51.0	20.0	9.0	0	46.0
Indicator value	92.3%	90.7%	92.5%	92.0%	92.0%	92.4%	93.4%	93.0%

Licensee Comments: none

ERO Drill Participation



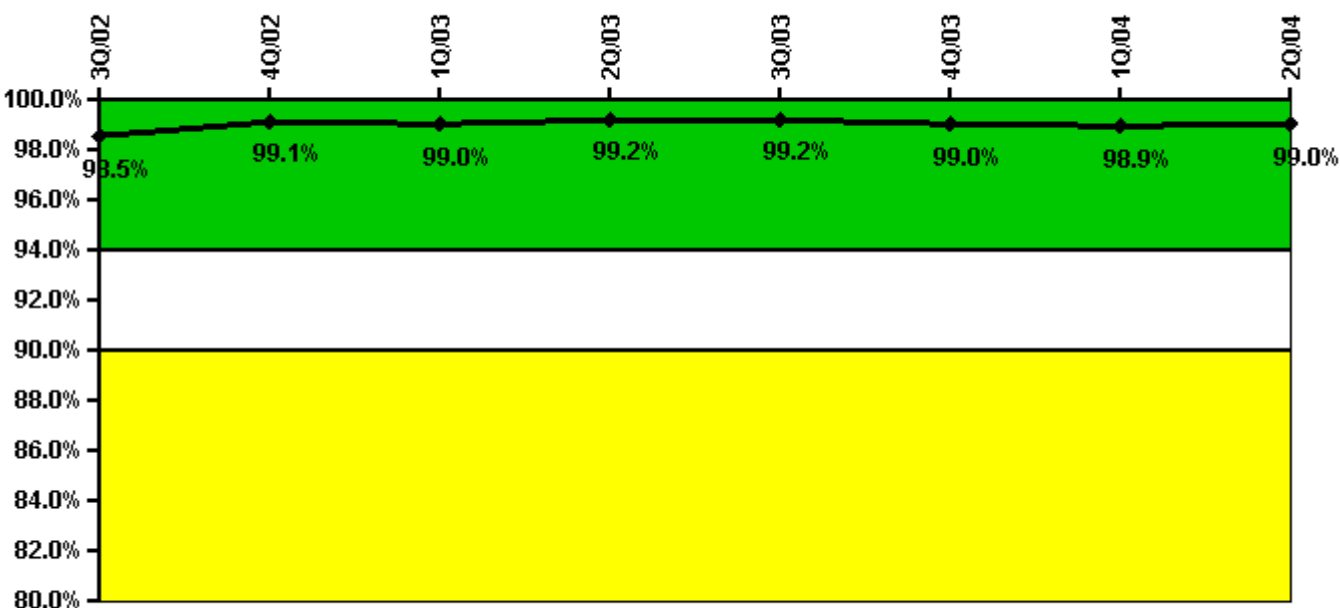
Thresholds: White < 80.0% Yellow < 60.0%

Notes

ERO Drill Participation	3Q/02	4Q/02	1Q/03	2Q/03	3Q/03	4Q/03	1Q/04	2Q/04
Participating Key personnel	57.0	61.0	63.0	65.0	70.0	74.0	78.0	83.0
Total Key personnel	61.0	64.0	64.0	67.0	73.0	80.0	84.0	84.0
Indicator value	93.4%	95.3%	98.4%	97.0%	95.9%	92.5%	92.9%	98.8%

Licensee Comments: none

Alert & Notification System



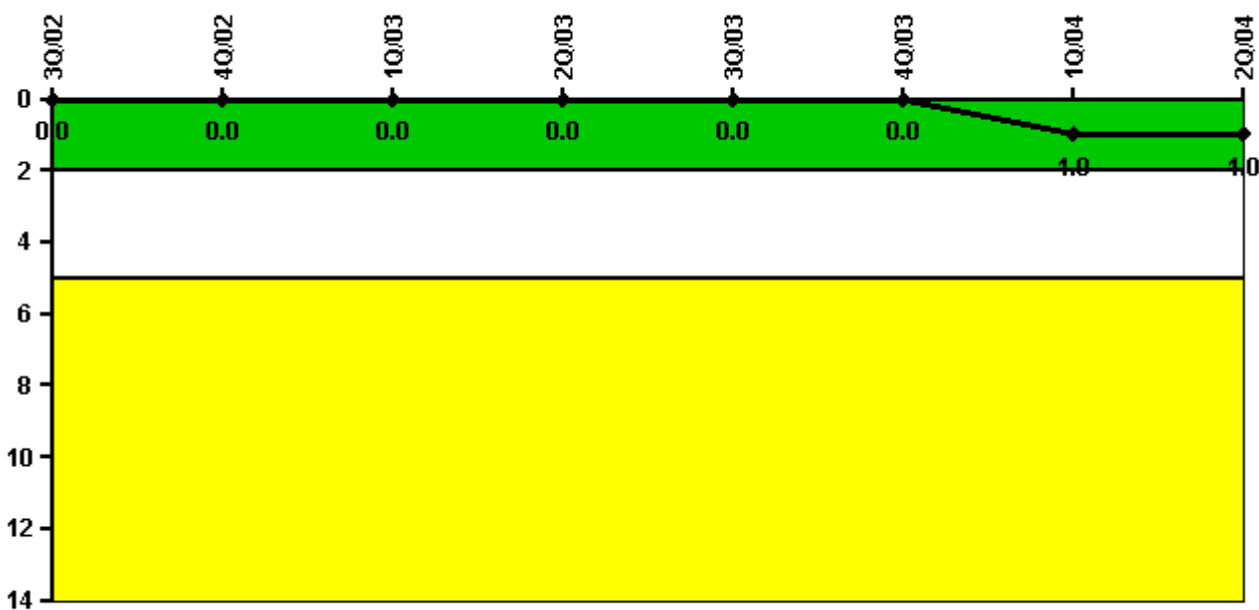
Thresholds: White < 94.0% Yellow < 90.0%

Notes

Alert & Notification System	3Q/02	4Q/02	1Q/03	2Q/03	3Q/03	4Q/03	1Q/04	2Q/04
Successful siren-tests	386	488	340	341	386	486	338	342
Total sirens-tests	392	490	343	343	392	490	343	343
Indicator value	98.5%	99.1%	99.0%	99.2%	99.2%	99.0%	98.9%	99.0%

Licensee Comments: none

Occupational Exposure Control Effectiveness



Thresholds: White > 2.0 Yellow > 5.0

Notes

Occupational Exposure Control Effectiveness	3Q/02	4Q/02	1Q/03	2Q/03	3Q/03	4Q/03	1Q/04	2Q/04
High radiation area occurrences	0	0	0	0	0	0	1	0
Very high radiation area occurrences	0	0	0	0	0	0	0	0
Unintended exposure occurrences	0	0	0	0	0	0	0	0
Indicator value	0	0	0	0	0	0	1	1

Licensee Comments: none

RETS/ODCM Radiological Effluent



Thresholds: White > 1.0 Yellow > 3.0

Notes

RETS/ODCM Radiological Effluent	3Q/02	4Q/02	1Q/03	2Q/03	3Q/03	4Q/03	1Q/04	2Q/04
RETS/ODCM occurrences	0	0	0	0	0	0	0	0
Indicator value	0	0	0	0	0	0	0	0

Licensee Comments: none

[Physical Protection](#) information not publicly available.

▲ [Action Matrix Summary](#) | [Inspection Findings Summary](#) | [PI Summary](#) | [Reactor Oversight Process](#)

Last Modified: September 8, 2004