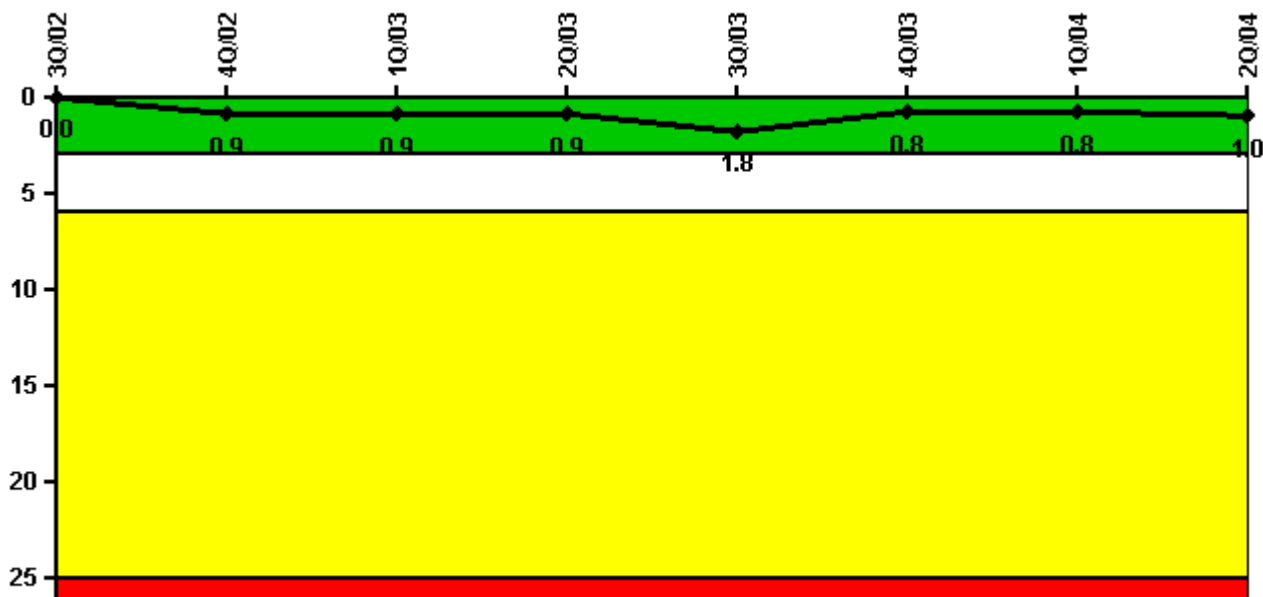


Salem 1

2Q/2004 Performance Indicators

Licensee's General Comments: none

Unplanned Scrams per 7000 Critical Hrs



Thresholds: White > 3.0 Yellow > 6.0 Red > 25.0

Notes

Unplanned Scrams per 7000 Critical Hrs	3Q/02	4Q/02	1Q/03	2Q/03	3Q/03	4Q/03	1Q/04	2Q/04
Unplanned scrams	0	1.0	0	0	1.0	0	0	0
Critical hours	2208.0	1568.0	2160.0	2183.0	1992.0	2142.3	2156.0	777.7
Indicator value	0	0.9	0.9	0.9	1.8	0.8	0.8	1.0

Licensee Comments: none

Scrams with Loss of Normal Heat Removal



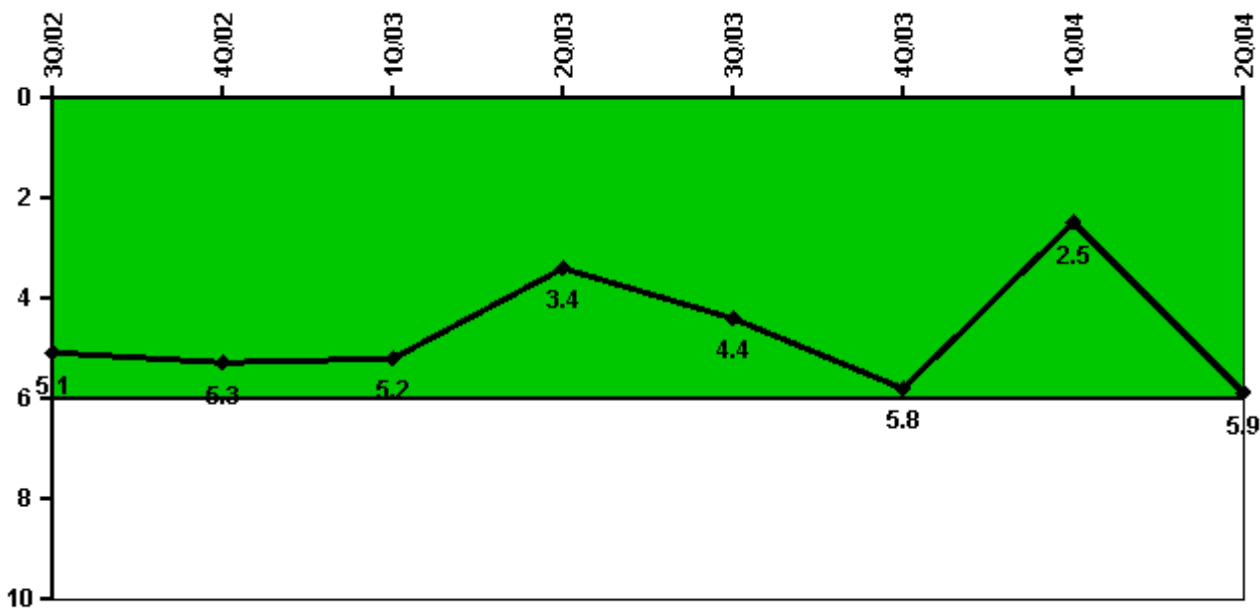
Thresholds: White > 2.0 Yellow > 10.0 Red > 20.0

Notes

Scrams with Loss of Normal Heat Removal	3Q/02	4Q/02	1Q/03	2Q/03	3Q/03	4Q/03	1Q/04	2Q/04
Scrams	0	0	0	0	0	0	0	0
Indicator value	1.0	1.0	1.0	1.0	1.0	1.0	1.0	1.0

Licensee Comments: none

Unplanned Power Changes per 7000 Critical Hrs



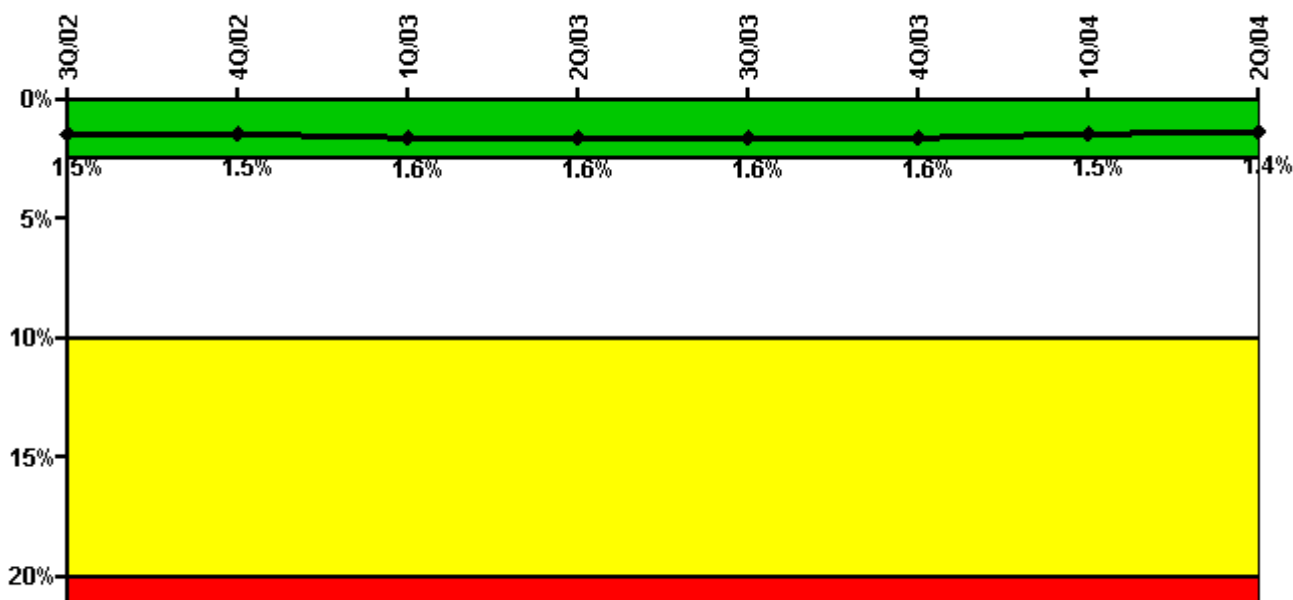
Thresholds: White > 6.0

Notes

Unplanned Power Changes per 7000 Critical Hrs	3Q/02	4Q/02	1Q/03	2Q/03	3Q/03	4Q/03	1Q/04	2Q/04
Unplanned power changes	0	0	4.0	0	1.0	2.0	0	3.0
Critical hours	2208.0	1568.0	2160.0	2183.0	1992.0	2142.3	2156.0	777.7
Indicator value	5.1	5.3	5.2	3.4	4.4	5.8	2.5	5.9

Licensee Comments: none

Safety System Unavailability, Emergency AC Power, >2EDG



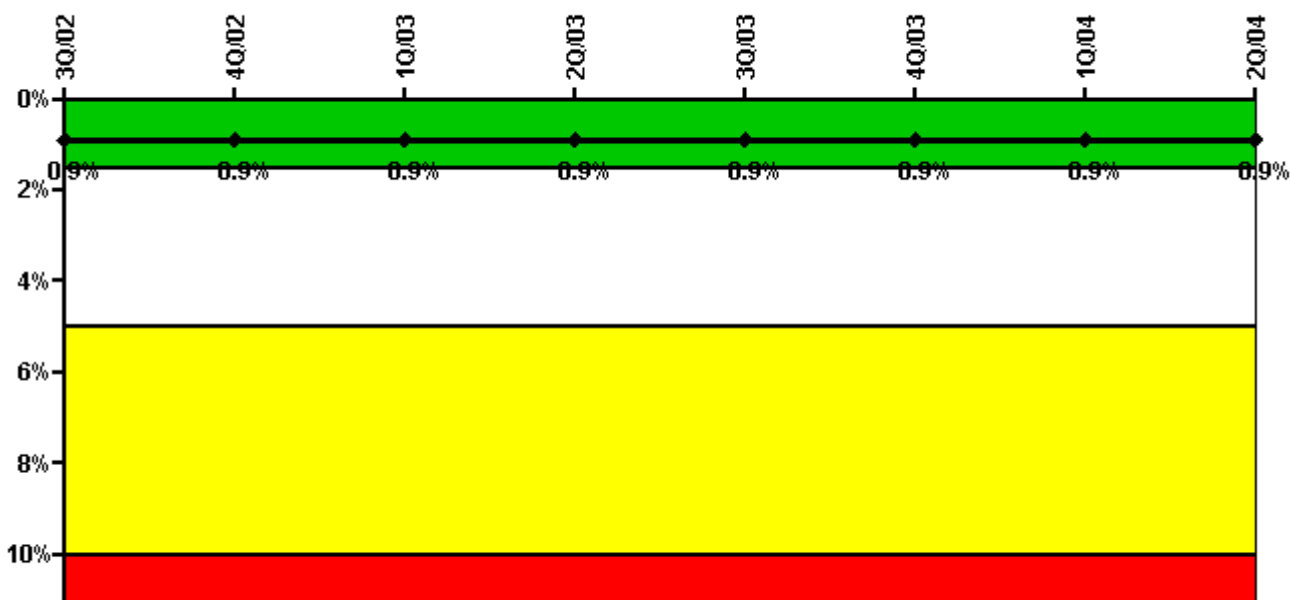
Thresholds: White > 2.5% Yellow > 10.0% Red > 20.0%

Notes

Safety System Unavailability, Emergency AC Power, >2EDG	3Q/02	4Q/02	1Q/03	2Q/03	3Q/03	4Q/03	1Q/04	2Q/04
Train 1								
Planned unavailable hours	44.40	3.20	41.40	71.20	5.20	5.30	11.70	2.90
Unplanned unavailable hours	0	0	6.90	0	0	0	0	0
Fault exposure hours	0	0	0	0	0	0	0	0
Effective Reset hours	0	0	0	0	0	0	0	0
Required hours	2208.00	2209.00	2160.00	2183.00	2208.00	2209.00	2184.00	2183.00
Train 2								
Planned unavailable hours	63.00	5.00	39.40	23.60	8.20	51.90	7.70	1.80
Unplanned unavailable hours	15.50	0	0	0	0	0	0	0
Fault exposure hours	0	0	0	0	0	0	0	0
Effective Reset hours	0	0	0	0	0	0	0	0
Required hours	2208.00	2209.00	2160.00	2183.00	2208.00	2209.00	2184.00	2183.00
Train 3								
Planned unavailable hours	98.40	5.30	21.40	41.60	5.00	6.80	36.90	1.20
Unplanned unavailable hours	87.80	3.50	0	0	1.50	0	0	0
Fault exposure hours	61.10	0	0	0	0	0	0	0
Effective Reset hours	0	0	0	0	0	0	0	0
Required hours	2208.00	2209.00	2160.00	2183.00	2208.00	2209.00	2184.00	2183.00
Indicator value	1.5%	1.5%	1.6%	1.6%	1.6%	1.6%	1.5%	1.4%

Licensee Comments: none

Safety System Unavailability, High Pressure Injection System (HPSI)



Thresholds: White > 1.5% Yellow > 5.0% Red > 10.0%

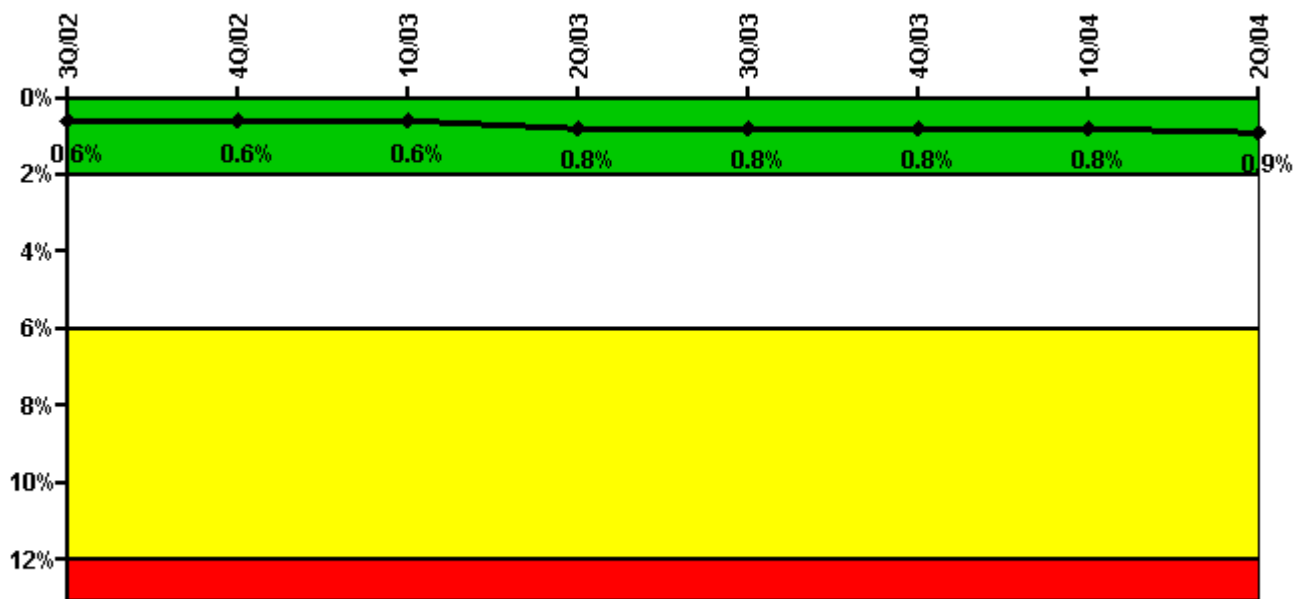
Notes

Safety System Unavailability, High Pressure Injection System (HPSI)	3Q/02	4Q/02	1Q/03	2Q/03	3Q/03	4Q/03	1Q/04	2Q/04
Train 1								
Planned unavailable hours	14.20	11.20	66.20	30.80	13.60	7.20	38.90	0.30
Unplanned unavailable hours	0	0	0	0	0	0	0	0
Fault exposure hours	0	0	0	0	0	0	0	0
Effective Reset hours	0	0	0	0	0	0	0	0
Required hours	2208.00	1568.00	2160.00	2183.00	1992.00	2142.00	2156.00	753.13
Train 2								
Planned unavailable hours	12.70	70.10	35.00	6.10	1.90	11.70	41.90	61.60
Unplanned unavailable hours	0	0	0	0	0	0	0	0
Fault exposure hours	0	0	0	0	0	0	0	0
Effective Reset hours	0	0	0	0	0	0	0	0
Required hours	2208.00	1568.00	2160.00	2183.00	1992.00	2142.00	2156.00	753.13
Train 3								
Planned unavailable hours	0.02	0	0	13.30	0	0	0	0
Unplanned unavailable hours	0	0	0	0	0	0	0	0
Fault exposure hours	0	0	0	0	0	0	0	0
Effective Reset hours	0	0	0	0	0	0	0	0
Required hours	2208.00	1568.00	2160.00	2183.00	1992.00	2142.00	2156.00	753.13
Train 4								
Planned unavailable hours	3.90	0	0	5.50	0	0	5.40	0
Unplanned unavailable hours	0	0	0	0	0	0	0	0
Fault exposure hours	0	0	0	0	0	0	0	0
Effective Reset hours	0	0	0	0	0	0	0	0
Required hours	2208.00	1568.00	2160.00	2183.00	1992.00	2142.00	2156.00	753.13
Indicator value	0.9%	0.9%	0.9%	0.9%	0.9%	0.9%	0.9%	0.9%

Licsee Comments:

2Q/04: Fault exposure time recorded on the 11 CVC pump due to backleakage on the 12 CVC pump is under evaluation. Time (t/2 of 42.2 hours) was counted from the last 11 CVC Pump IST until the time that the cause of the flow issue was discovered.

Safety System Unavailability, Heat Removal System (AFW)



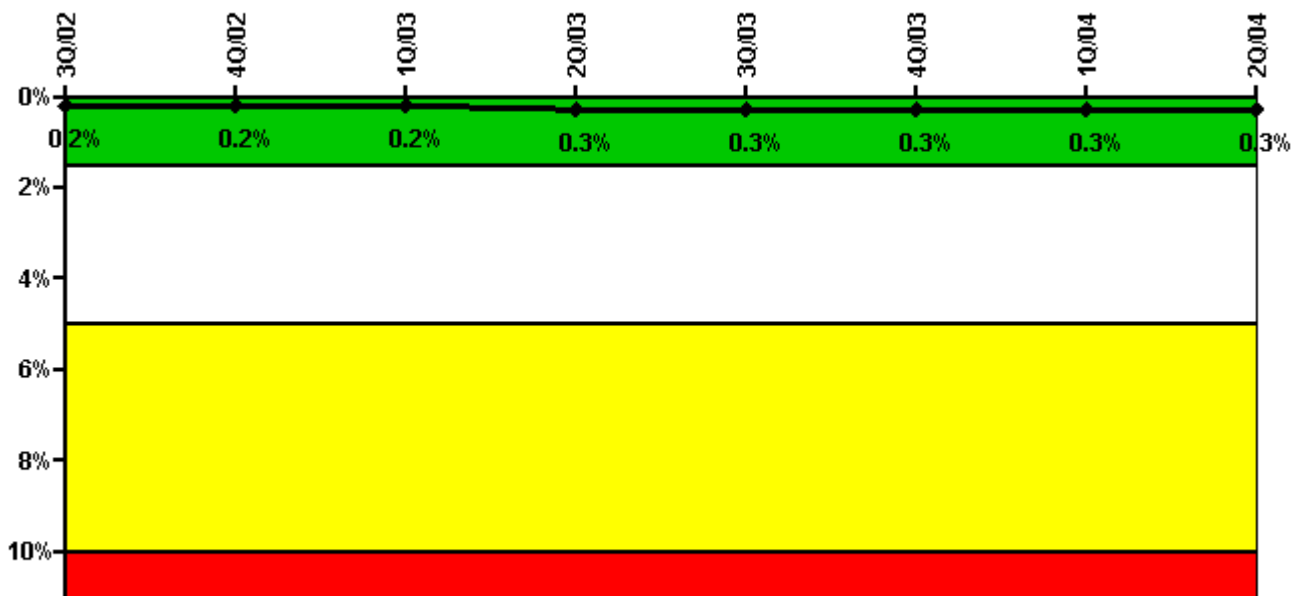
Thresholds: White > 2.0% Yellow > 6.0% Red > 12.0%

Notes

Safety System Unavailability, Heat Removal System (AFW)	3Q/02	4Q/02	1Q/03	2Q/03	3Q/03	4Q/03	1Q/04	2Q/04
Train 1								
Planned unavailable hours	1.30	0.90	1.20	1.20	1.30	15.00	0.80	0.70
Unplanned unavailable hours	0	0	0	0	0	0	0	0
Fault exposure hours	0	0	0	0	0	0	0	0
Effective Reset hours	0	0	0	0	0	0	0	0
Required hours	2208.00	1568.00	2160.00	2183.00	1992.00	2142.00	2156.00	753.13
Train 2								
Planned unavailable hours	0.70	0.80	0.70	69.30	43.30	29.30	20.90	21.30
Unplanned unavailable hours	0	0	0	0	0	0	0	0
Fault exposure hours	0	0	0	0	0	0	0	0
Effective Reset hours	0	0	0	0	0	0	0	0
Required hours	2208.00	1568.00	2160.00	2183.00	1992.00	2142.00	2156.00	753.13
Train 3								
Planned unavailable hours	0.80	12.20	89.60	22.20	15.90	1.60	31.80	1.80
Unplanned unavailable hours	0	1.20	0	19.40	0	0	2.90	40.50
Fault exposure hours	0	0	0	0	0	0	0	0
Effective Reset hours	0	0	0	0	0	0	0	0
Required hours	2208.00	1568.00	2160.00	2183.00	1992.00	2142.00	2156.00	753.13
Indicator value	0.6%	0.6%	0.6%	0.8%	0.8%	0.8%	0.8%	0.9%

1Q/04: 3/30/04 - 13 AFW pump trip t/2 fault exposure time recorded from relatching the pump on 3/28/04 at 2314 to the 13 AFW pump trip on 3/30/04

Safety System Unavailability, Residual Heat Removal System



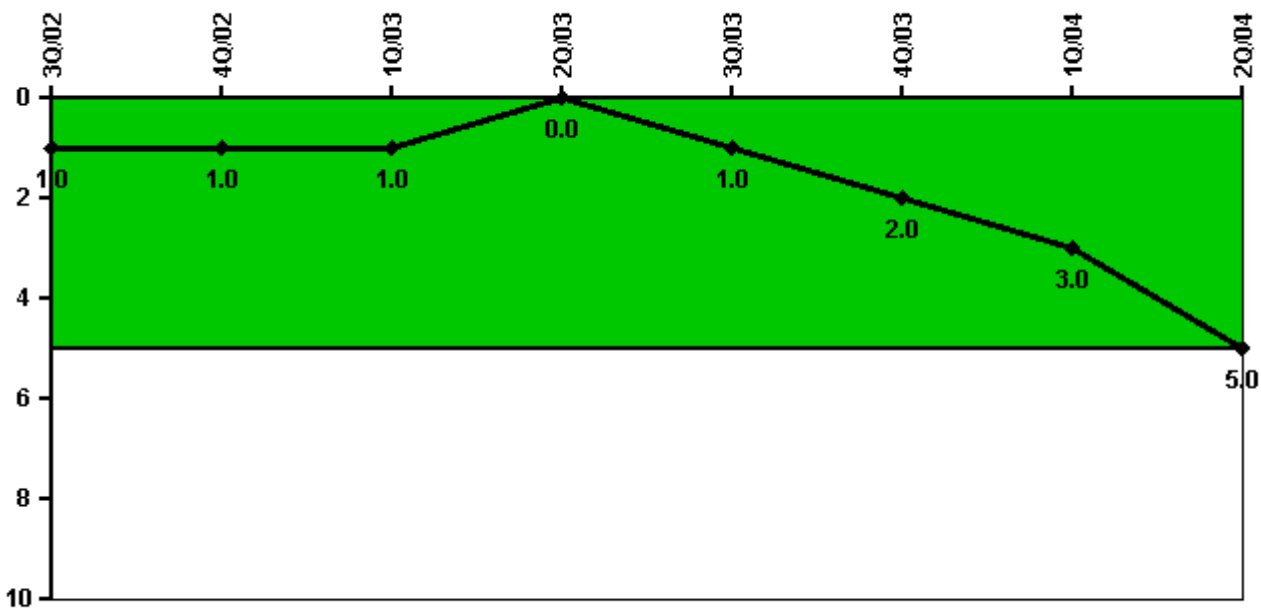
Thresholds: White > 1.5% Yellow > 5.0% Red > 10.0%

Notes

Safety System Unavailability, Residual Heat Removal System	3Q/02	4Q/02	1Q/03	2Q/03	3Q/03	4Q/03	1Q/04	2Q/04
Train 1								
Planned unavailable hours	0.02	0	0	28.10	6.50	0	13.70	0
Unplanned unavailable hours	0	0	0	0	10.40	0	0	0
Fault exposure hours	0	0	0	0	0	0	0	0
Effective Reset hours	0	0	0	0	0	0	0	0
Required hours	2208.00	2209.00	2160.00	2183.00	2208.00	2209.00	2184.00	2183.00
Train 2								
Planned unavailable hours	0	0.02	13.10	23.80	1.20	0	0.10	0
Unplanned unavailable hours	0	0	0	0	0	0	0	0
Fault exposure hours	0	0	0	0	0	0	0	0
Effective Reset hours	0	0	0	0	0	0	0	0
Required hours	2208.00	2209.00	2160.00	2183.00	2208.00	2209.00	2184.00	2183.00
Indicator value	0.2%	0.2%	0.2%	0.3%	0.3%	0.3%	0.3%	0.3%

Licensee Comments: none

Safety System Functional Failures (PWR)



Thresholds: White > 5.0

Notes

Safety System Functional Failures (PWR)	3Q/02	4Q/02	1Q/03	2Q/03	3Q/03	4Q/03	1Q/04	2Q/04
Safety System Functional Failures	0	0	0	0	1	1	1	2
Indicator value	1	1	1	0	1	2	3	5

Licensee Comments: none

Reactor Coolant System Activity



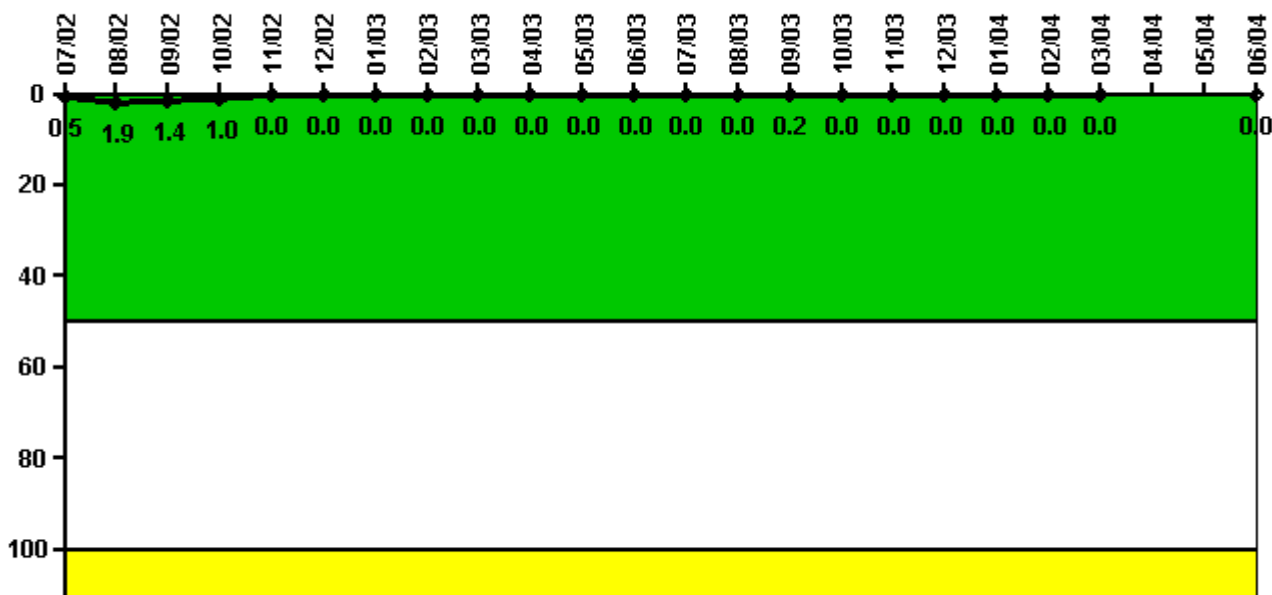
Thresholds: White > 50.0 Yellow > 100.0

Notes

Reactor Coolant System Activity	7/02	8/02	9/02	10/02	11/02	12/02	1/03	2/03	3/03	4/03	5/03	6/03
Maximum activity	0.003220	0.003130	0.002870	0.002220	0.000624	0.000650	0.000671	0.000672	0.000712	0.000801	0.000818	0.000903
Technical specification limit	1.0	1.0	1.0	1.0	1.0	1.0	1.0	1.0	1.0	1.0	1.0	1.0
Indicator value	0.3	0.3	0.3	0.2	0.1	0.1	0.1	0.1	0.1	0.1	0.1	0.1
Reactor Coolant System Activity	7/03	8/03	9/03	10/03	11/03	12/03	1/04	2/04	3/04	4/04	5/04	6/04
Maximum activity	0.000925	0.000944	0.000959	0.000986	0.000946	0.001580	0.000990	0.001000	0.004100	N/A	N/A	0.000362
Technical specification limit	1.0	1.0	1.0	1.0	1.0	1.0	1.0	1.0	1.0	1.0	1.0	1.0
Indicator value	0.1	0.1	0.1	0.1	0.1	0.2	0.1	0.1	0.4	N/A	N/A	0

Licensee Comments: none

Reactor Coolant System Leakage



Thresholds: White > 50.0 Yellow > 100.0

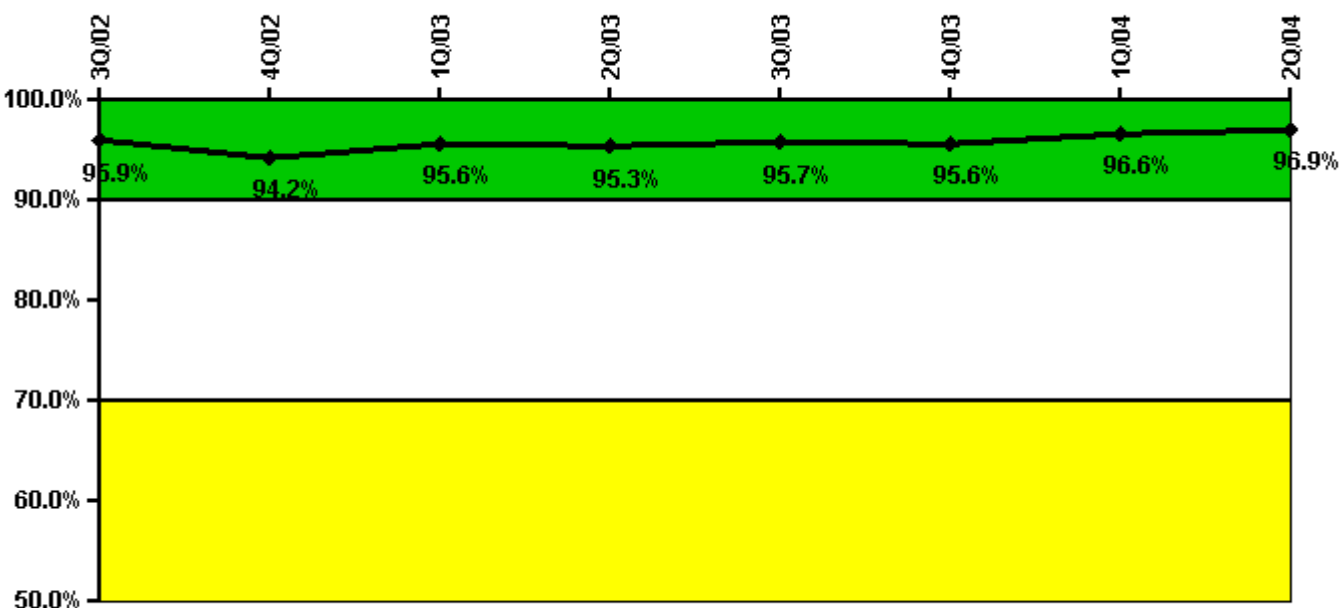
Notes

Reactor Coolant System Leakage	7/02	8/02	9/02	10/02	11/02	12/02	1/03	2/03	3/03	4/03	5/03	6/03
Maximum leakage	0.054	0.190	0.140	0.100	0.001	0.001	0	0	0	0	0	0
Technical specification limit	10.0	10.0	10.0	10.0	10.0	10.0	10.0	10.0	10.0	10.0	10.0	10.0
Indicator value	0.5	1.9	1.4	1.0	0	0	0	0	0	0	0	0

Reactor Coolant System Leakage	7/03	8/03	9/03	10/03	11/03	12/03	1/04	2/04	3/04	4/04	5/04	6/04
Maximum leakage	0	0	0.024	0	0	0	0	0	0	N/A	N/A	0
Technical specification limit	10.0	10.0	10.0	10.0	10.0	10.0	10.0	10.0	10.0	10.0	10.0	10.0
Indicator value	0	0	0.2	0	0	0	0	0	0	N/A	N/A	0

Licensee Comments: none

Drill/Exercise Performance



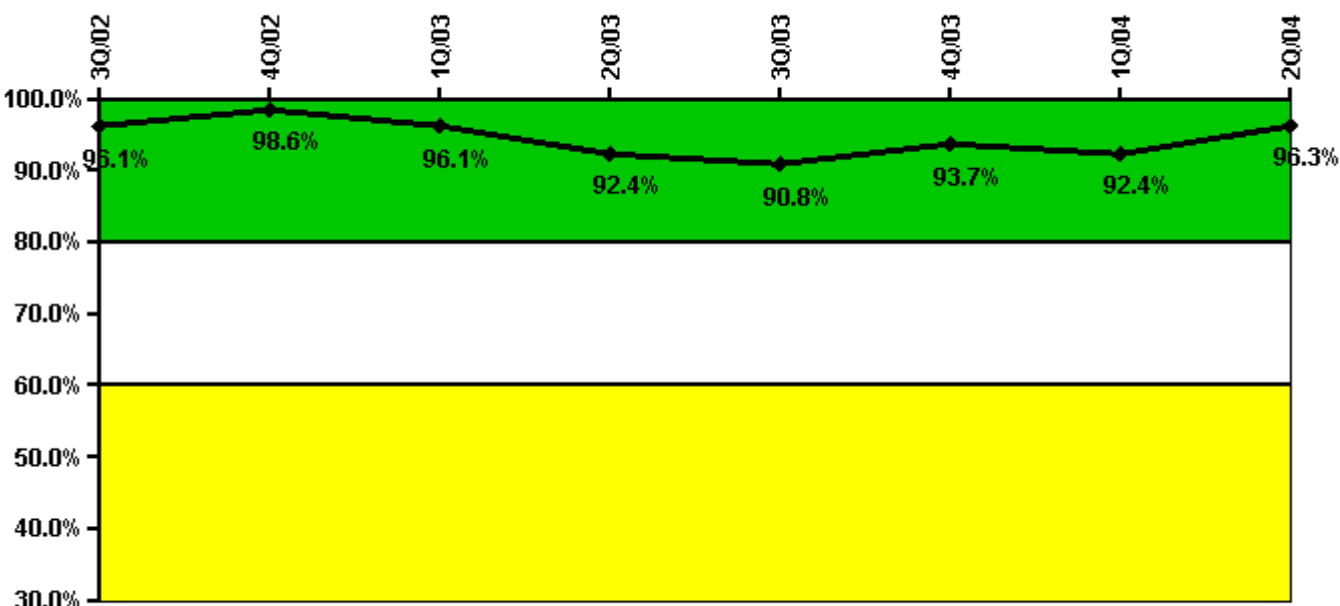
Thresholds: White < 90.0% Yellow < 70.0%

Notes

Drill/Exercise Performance	3Q/02	4Q/02	1Q/03	2Q/03	3Q/03	4Q/03	1Q/04	2Q/04
Successful opportunities	18.0	34.0	96.0	5.0	18.0	106.0	24.0	10.0
Total opportunities	18.0	38.0	98.0	6.0	18.0	109.0	24.0	10.0
Indicator value	95.9%	94.2%	95.6%	95.3%	95.7%	95.6%	96.6%	96.9%

Licensee Comments: none

ERO Drill Participation



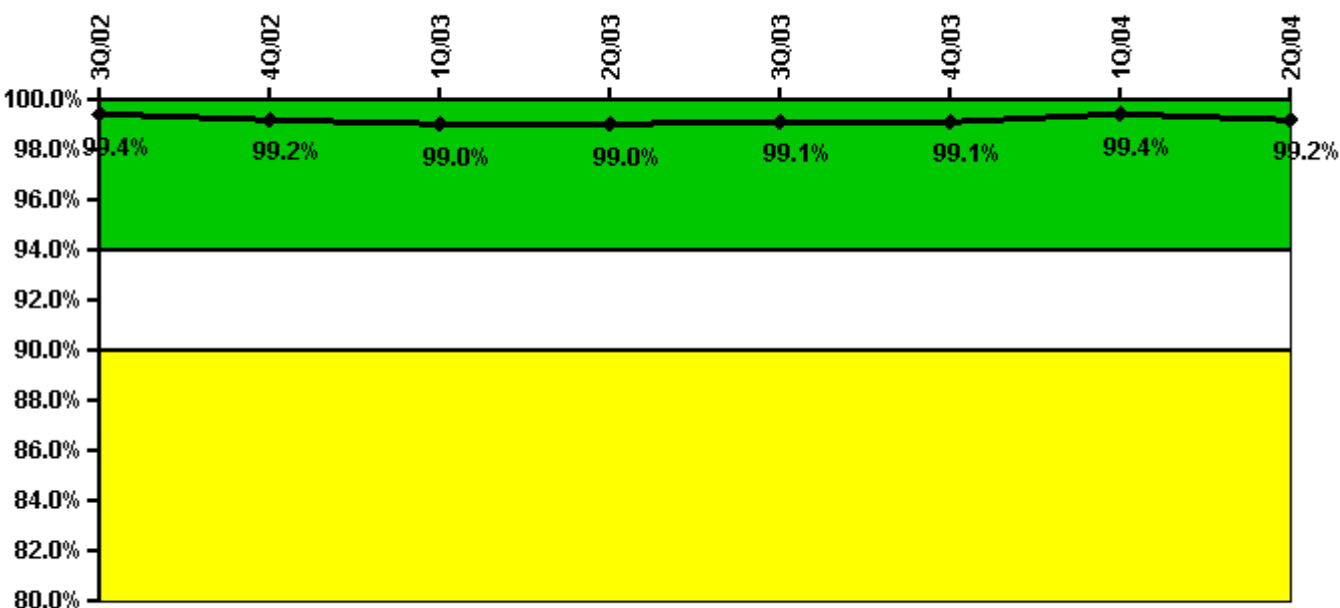
Thresholds: White < 80.0% Yellow < 60.0%

Notes

ERO Drill Participation	3Q/02	4Q/02	1Q/03	2Q/03	3Q/03	4Q/03	1Q/04	2Q/04
Participating Key personnel	73.0	73.0	73.0	73.0	69.0	74.0	73.0	79.0
Total Key personnel	76.0	74.0	76.0	79.0	76.0	79.0	79.0	82.0
Indicator value	96.1%	98.6%	96.1%	92.4%	90.8%	93.7%	92.4%	96.3%

Licensee Comments: none

Alert & Notification System



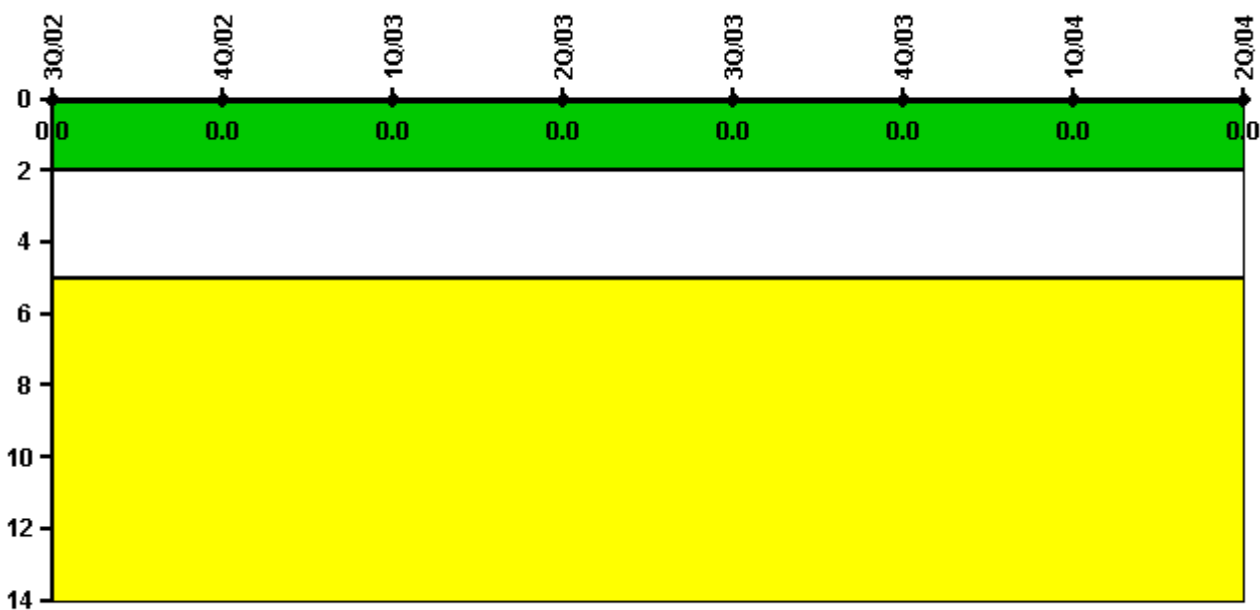
Thresholds: White < 94.0% Yellow < 90.0%

Notes

Alert & Notification System	3Q/02	4Q/02	1Q/03	2Q/03	3Q/03	4Q/03	1Q/04	2Q/04
Successful siren-tests	492	563	526	495	496	491	496	490
Total sirens-tests	497	568	534	499	497	497	497	497
Indicator value	99.4%	99.2%	99.0%	99.0%	99.1%	99.1%	99.4%	99.2%

Licensee Comments: none

Occupational Exposure Control Effectiveness



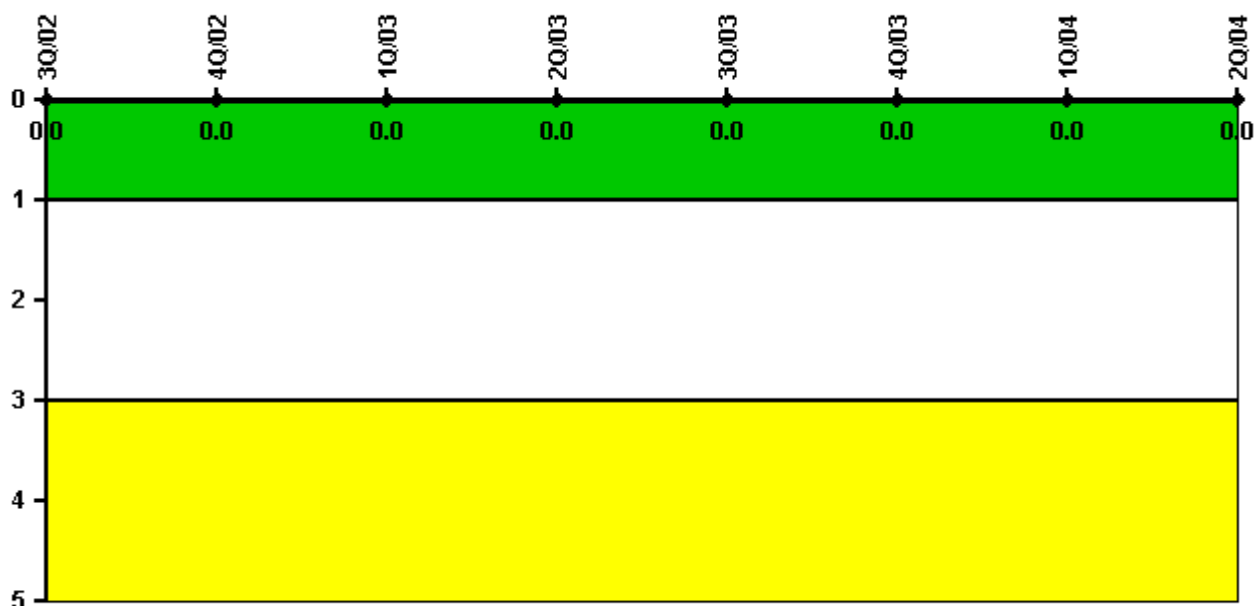
Thresholds: White > 2.0 Yellow > 5.0

Notes

Occupational Exposure Control Effectiveness	3Q/02	4Q/02	1Q/03	2Q/03	3Q/03	4Q/03	1Q/04	2Q/04
High radiation area occurrences	0	0	0	0	0	0	0	0
Very high radiation area occurrences	0	0	0	0	0	0	0	0
Unintended exposure occurrences	0	0	0	0	0	0	0	0
Indicator value	0	0	0	0	0	0	0	0

Licensee Comments: none

RETS/ODCM Radiological Effluent



Thresholds: White > 1.0 Yellow > 3.0

Notes

RETS/ODCM Radiological Effluent	3Q/02	4Q/02	1Q/03	2Q/03	3Q/03	4Q/03	1Q/04	2Q/04
RETS/ODCM occurrences	0	0	0	0	0	0	0	0
Indicator value	0	0	0	0	0	0	0	0

Licensee Comments: none

[Physical Protection](#) information not publicly available.

▲ [Action Matrix Summary](#) | [Inspection Findings Summary](#) | [PI Summary](#) | [Reactor Oversight Process](#)

Last Modified: September 8, 2004