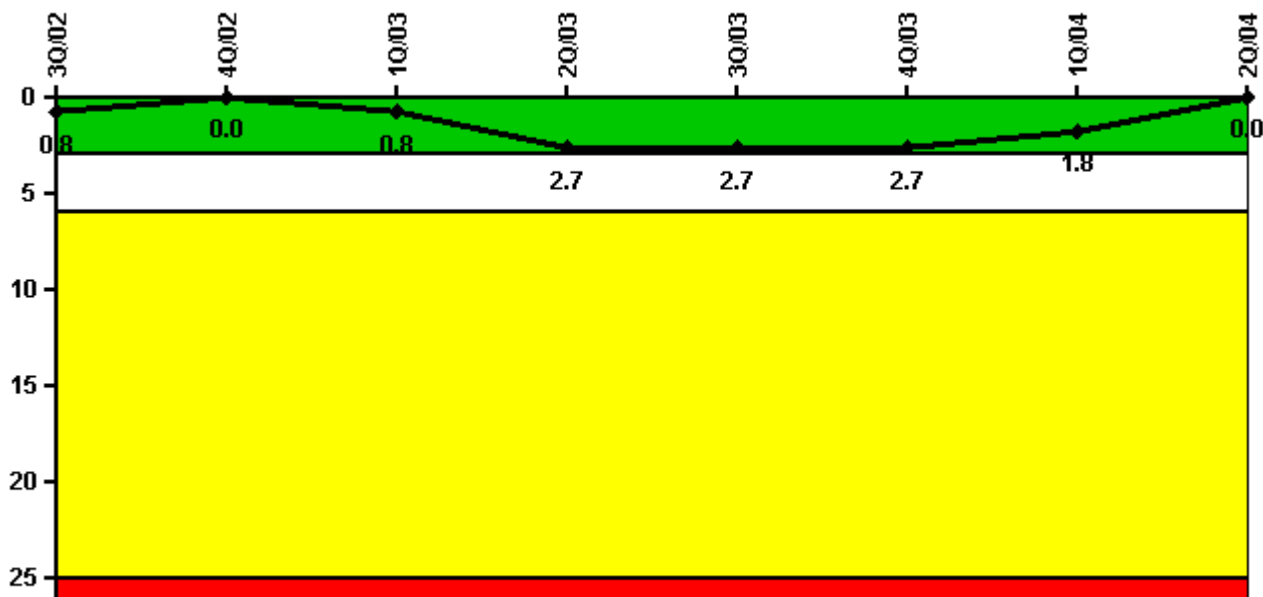


Pilgrim 1

2Q/2004 Performance Indicators

Licensee's General Comments: none

Unplanned Scrams per 7000 Critical Hrs



Thresholds: White > 3.0 Yellow > 6.0 Red > 25.0

Notes

Unplanned Scrams per 7000 Critical Hrs	3Q/02	4Q/02	1Q/03	2Q/03	3Q/03	4Q/03	1Q/04	2Q/04
Unplanned scrams	0	0	1.0	2.0	0	0	0	0
Critical hours	2208.0	2209.0	1971.0	1519.0	2188.0	1984.0	2138.6	2183.0
Indicator value	0.8	0	0.8	2.7	2.7	2.7	1.8	0

Licensee Comments: none

Scrams with Loss of Normal Heat Removal



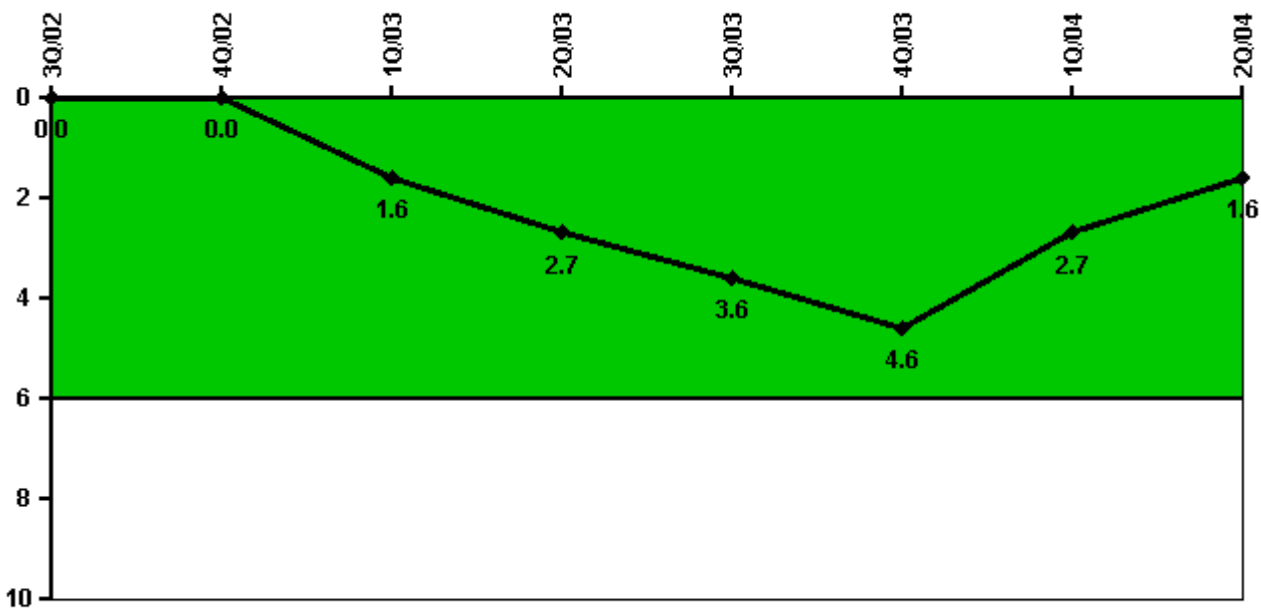
Thresholds: White > 2.0 Yellow > 10.0 Red > 20.0

Notes

Scrams with Loss of Normal Heat Removal	3Q/02	4Q/02	1Q/03	2Q/03	3Q/03	4Q/03	1Q/04	2Q/04
Scrams	0	0	0	0	0	0	0	0
Indicator value	0	0	0	0	0	0	0	0

Licensee Comments: none

Unplanned Power Changes per 7000 Critical Hrs



Thresholds: White > 6.0

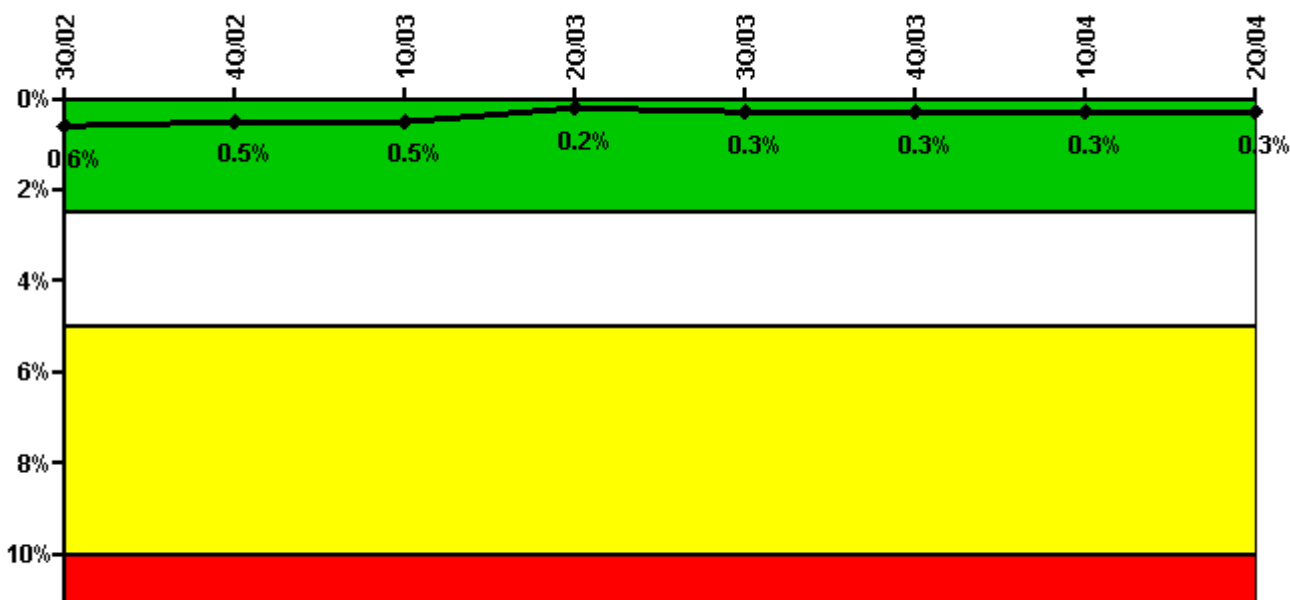
Notes

Unplanned Power Changes per 7000 Critical Hrs	3Q/02	4Q/02	1Q/03	2Q/03	3Q/03	4Q/03	1Q/04	2Q/04
Unplanned power changes	0	0	2.0	1.0	1.0	1.0	0	0
Critical hours	2208.0	2209.0	1971.0	1519.0	2188.0	1984.0	2138.6	2183.0
Indicator value	0	0	1.6	2.7	3.6	4.6	2.7	1.6

Licensee Comments:

2Q/04: Reflects unplanned power changes greater than 20% of licensed reactor power on 9/16/03 and 12/1/03.

Safety System Unavailability, Emergency AC Power



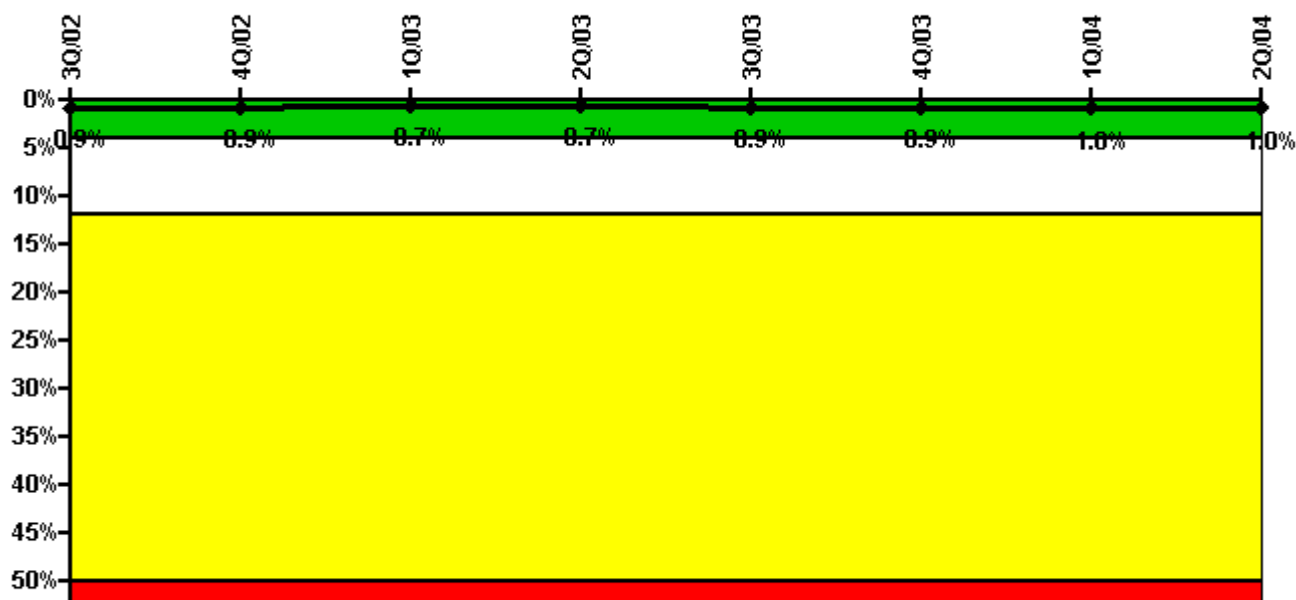
Thresholds: White > 2.5% Yellow > 5.0% Red > 10.0%

Notes

Safety System Unavailability, Emergency AC Power	3Q/02	4Q/02	1Q/03	2Q/03	3Q/03	4Q/03	1Q/04	2Q/04
Train 1								
Planned unavailable hours	1.83	1.53	1.01	1.58	1.58	11.34	5.60	2.11
Unplanned unavailable hours	4.70	0	0	0	21.08	0	1.50	0
Fault exposure hours	0	0	0	0	0	0	0	0
Effective Reset hours	0	0	0	0	0	0	0	0
Required hours	2208.00	2209.00	2058.00	1570.00	2202.70	1983.00	2184.00	2184.00
Train 2								
Planned unavailable hours	0.70	0.89	0.80	0.91	2.51	17.43	2.59	1.02
Unplanned unavailable hours	3.05	0	13.72	0	0.50	0	7.70	0.50
Fault exposure hours	0	0	0	0	0	0	0	0
Effective Reset hours	0	0	0	0	0	0	0	0
Required hours	2208.00	2209.00	2058.00	1570.00	2202.70	1983.00	2184.00	2184.00
Indicator value	0.6%	0.5%	0.5%	0.2%	0.3%	0.3%	0.3%	0.3%

Licensee Comments: none

Safety System Unavailability, High Pressure Injection System (HPCI)



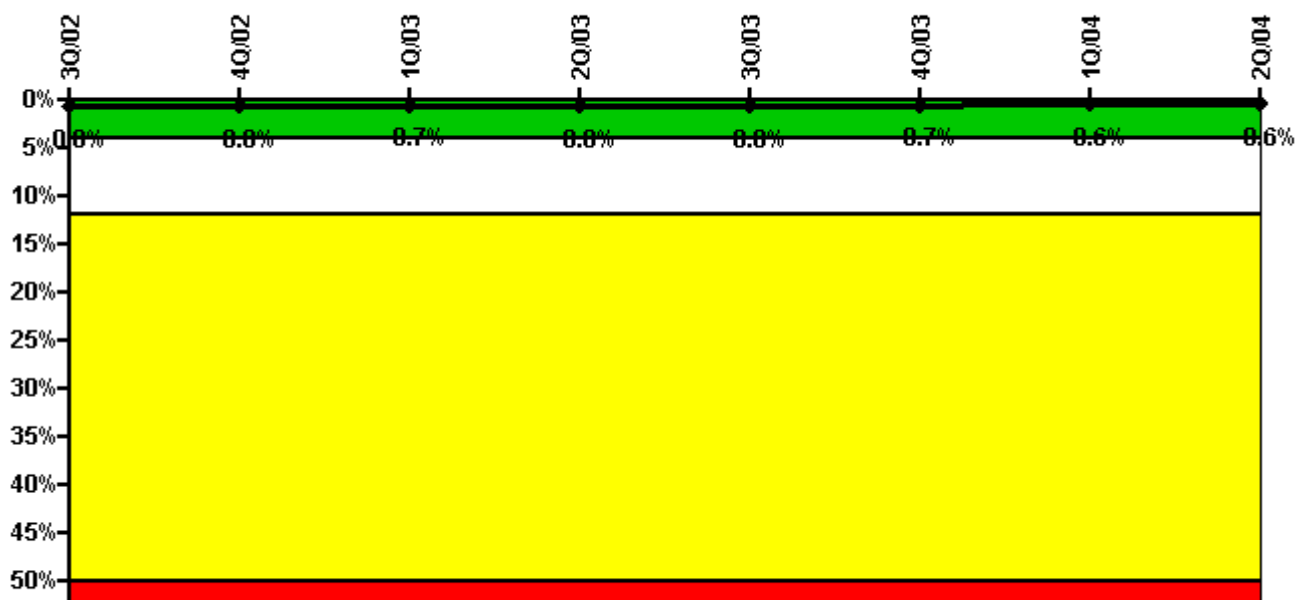
Thresholds: White > 4.0% Yellow > 12.0% Red > 50.0%

Notes

Safety System Unavailability, High Pressure Injection System (HPCI)	3Q/02	4Q/02	1Q/03	2Q/03	3Q/03	4Q/03	1Q/04	2Q/04
Train 1								
Planned unavailable hours	18.62	3.62	0.35	11.15	4.97	0.90	45.52	6.40
Unplanned unavailable hours	0.50	0	0	0	101.43	0	0	0
Fault exposure hours	0	0	0	0	0	0	0	0
Effective Reset hours	0	0	0	0	0	0	0	0
Required hours	2208.00	2209.00	2000.75	1590.54	2200.60	1980.00	2140.00	2184.00
Indicator value	0.9%	0.9%	0.7%	0.7%	0.9%	0.9%	1.0%	1.0%

Licensee Comments: none

Safety System Unavailability, Heat Removal System (RCIC)



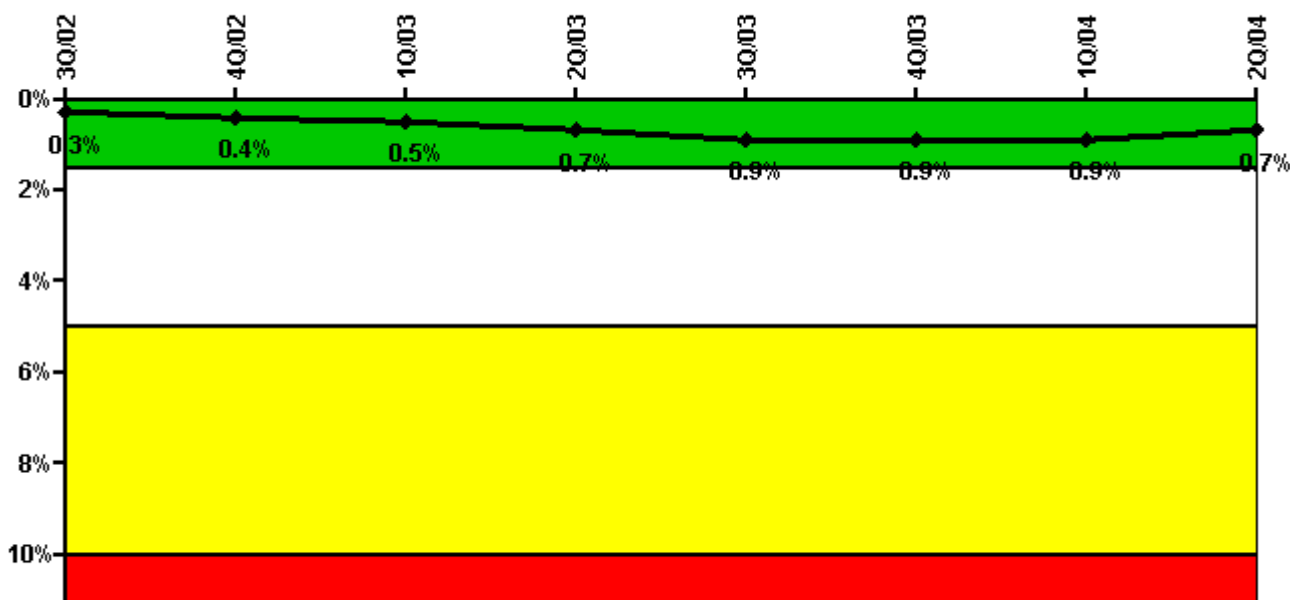
Thresholds: White > 4.0% Yellow > 12.0% Red > 50.0%

Notes

Safety System Unavailability, Heat Removal System (RCIC)	3Q/02	4Q/02	1Q/03	2Q/03	3Q/03	4Q/03	1Q/04	2Q/04
Train 1								
Planned unavailable hours	14.28	22.73	19.48	9.74	25.29	3.81	3.18	4.93
Unplanned unavailable hours	0	0	0	0	0	0	0	0
Fault exposure hours	0	0	0	0	0	0	0	0
Effective Reset hours	0	0	0	0	0	0	0	0
Required hours	2208.00	2209.00	2000.75	1590.54	2200.60	1980.00	2140.00	2184.00
Indicator value	0.8%	0.8%	0.7%	0.8%	0.8%	0.7%	0.6%	0.6%

Licensee Comments: none

Safety System Unavailability, Residual Heat Removal System



Thresholds: White > 1.5% Yellow > 5.0% Red > 10.0%

Notes

Safety System Unavailability, Residual Heat Removal System	3Q/02	4Q/02	1Q/03	2Q/03	3Q/03	4Q/03	1Q/04	2Q/04
Train 1								
Planned unavailable hours	0.84	24.02	0	109.45	21.09	13.65	1.50	5.62
Unplanned unavailable hours	0	0	59.20	0	54.59	0	0	0
Fault exposure hours	0	0	0	0	0	0	0	0
Effective Reset hours	0	0	0	0	0	0	0	0
Required hours	2208.00	2209.00	2160.00	2183.00	2208.00	2209.00	2184.00	2184.00
Train 2								
Planned unavailable hours	10.23	7.31	0	0	0	13.72	17.68	0.82
Unplanned unavailable hours	0	0	12.80	0	0	0	0	0
Fault exposure hours	0	0	0	0	0	0	0	0
Effective Reset hours	0	0	0	0	0	0	0	0
Required hours	2208.00	2209.00	2160.00	2183.00	2208.00	2209.00	2184.00	2184.00
Indicator value	0.3%	0.4%	0.5%	0.7%	0.9%	0.9%	0.9%	0.7%

Licensee Comments:

2Q/04: The indicator reflects the revision of certain planned and unplanned unavailability hours for 1Q-2001 through 4Q-2003 being reported via a change report submitted as part of the 2Q-2004 data submittal.

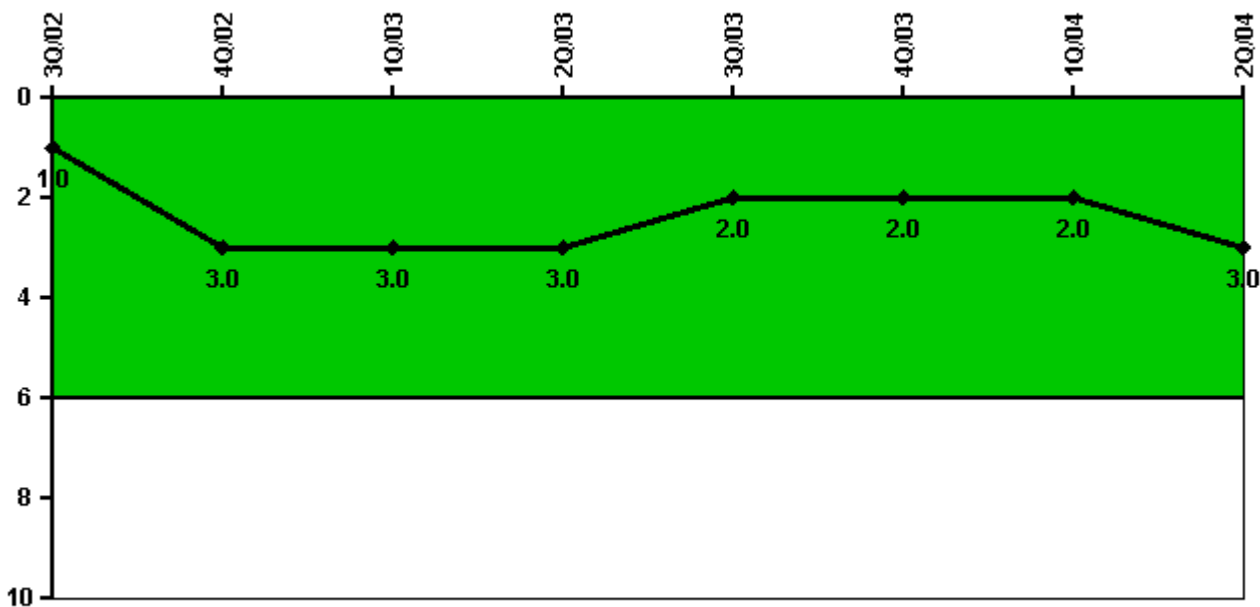
2Q/03: Reflects unavailability hours incurred at the beginning of the 2003 refueling outage.

3Q/01: The indicator is expressed as an average of the unavailability for Trains 1 and 2. Reflects revision of Train 1 and Train 2 planned unavailable hours for 2Q-2001 that is included in the change report for 2Q-2001.

2Q/01: Reflects revision of the Train 1 planned unavailability hours (from 53.03 to zero) and Train 2 planned unavailability hours (from 181.27 to 108.85).

1Q/01: The number of fault exposure hours for Train 1 was revised to zero hours (from 73.15 hours) as a result of further evaluation of the hours previously reported. The revision does not change the indicator color (green).

Safety System Functional Failures (BWR)



Thresholds: White > 6.0

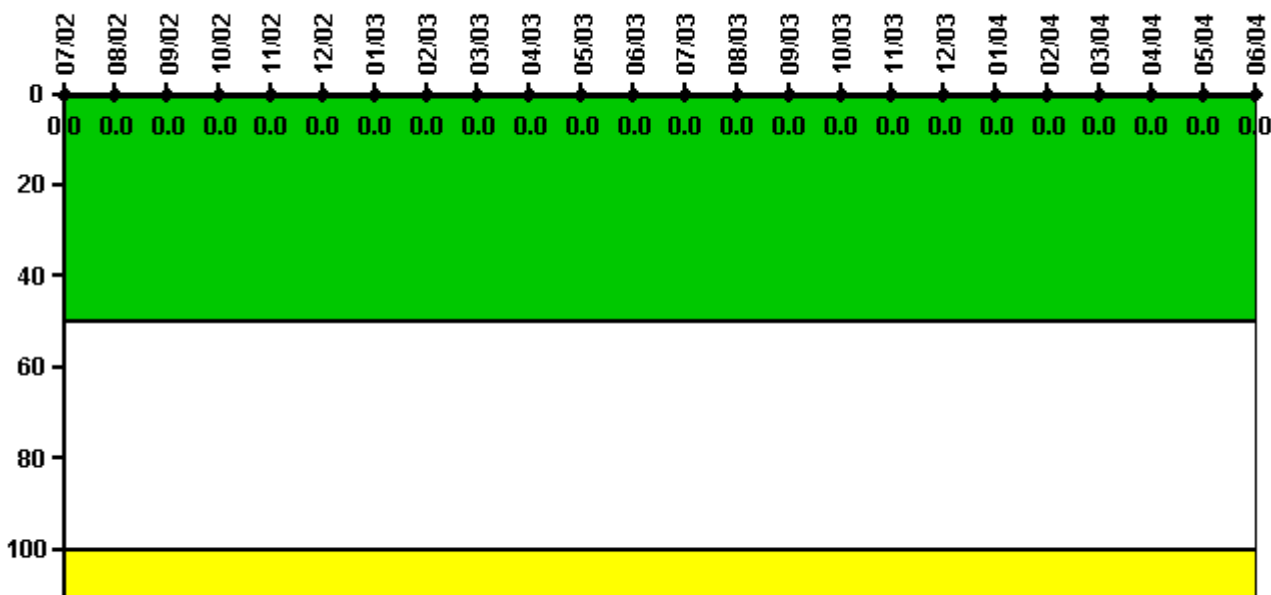
Notes

Safety System Functional Failures (BWR)	3Q/02	4Q/02	1Q/03	2Q/03	3Q/03	4Q/03	1Q/04	2Q/04
Safety System Functional Failures	1	2	0	0	0	2	0	1
Indicator value	1	3	3	3	2	2	2	3

Licensee Comments:

2Q/04: Reflects safety system failures reported in the last 4 quarters via LER 2003-004-00 (HPCI) that was submitted on 10/27/03, LER 2003-005-00 (HPCI and RCIC) that was submitted on 11/3/03, and LER 2004-003-00 (HPCI) that was submitted on 4/26/04.

Reactor Coolant System Activity



Thresholds: White > 50.0 Yellow > 100.0

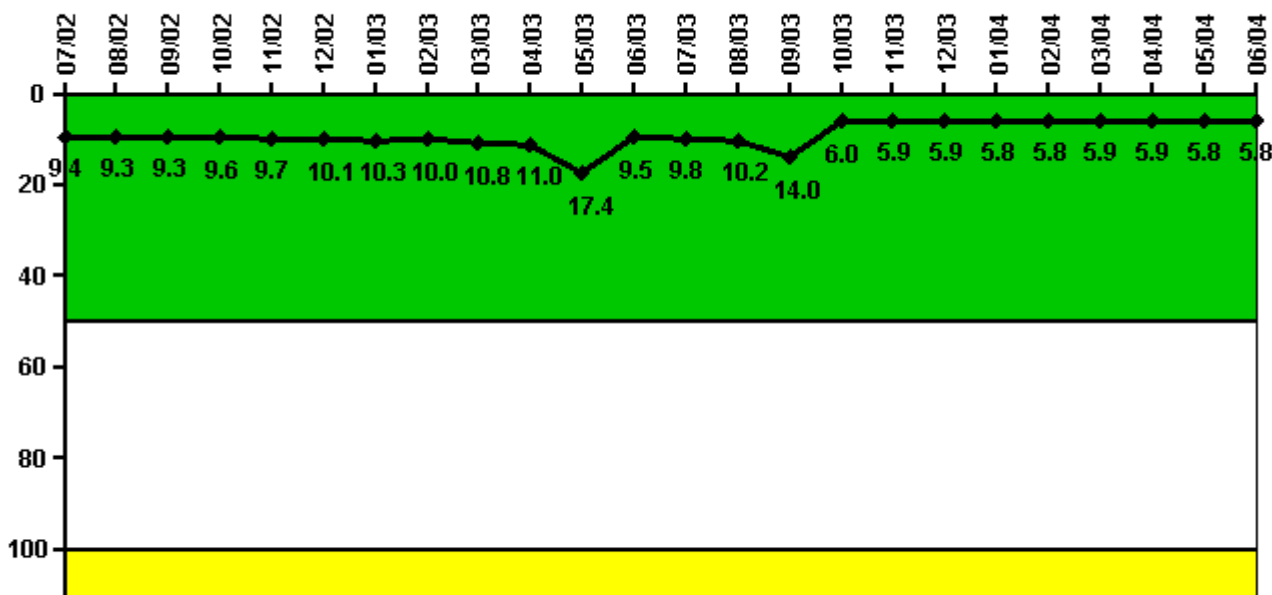
Notes

Reactor Coolant System Activity	7/02	8/02	9/02	10/02	11/02	12/02	1/03	2/03	3/03	4/03	5/03	6/03
Maximum activity	0.002360	0.002930	0.002850	0.001780	0.002160	0.002900	0.004520	0.003160	0.003040	0.002970	0.002360	0.005000
Technical specification limit	20.0	20.0	20.0	20.0	20.0	20.0	20.0	20.0	20.0	20.0	20.0	20.0
Indicator value	0	0	0	0	0	0	0	0	0	0	0	0
Reactor Coolant System Activity	7/03	8/03	9/03	10/03	11/03	12/03	1/04	2/04	3/04	4/04	5/04	6/04
Maximum activity	0.005000	0.004350	0.003780	0.004690	0.004120	0.003900	0.003930	0.003840	0.003430	0.003610	0.004280	0.003400
Technical specification limit	20.0	20.0	20.0	20.0	20.0	20.0	20.0	20.0	20.0	20.0	20.0	20.0
Indicator value	0	0	0	0	0	0	0	0	0	0	0	0

Licensee Comments:

6/04: Indicates reactor coolant system activity, depicted as a percentage of the Technical Specifications limit for Iodine. Technical Specifications do not specify the limit for Iodine-131.

Reactor Coolant System Leakage



Thresholds: White > 50.0 Yellow > 100.0

Notes

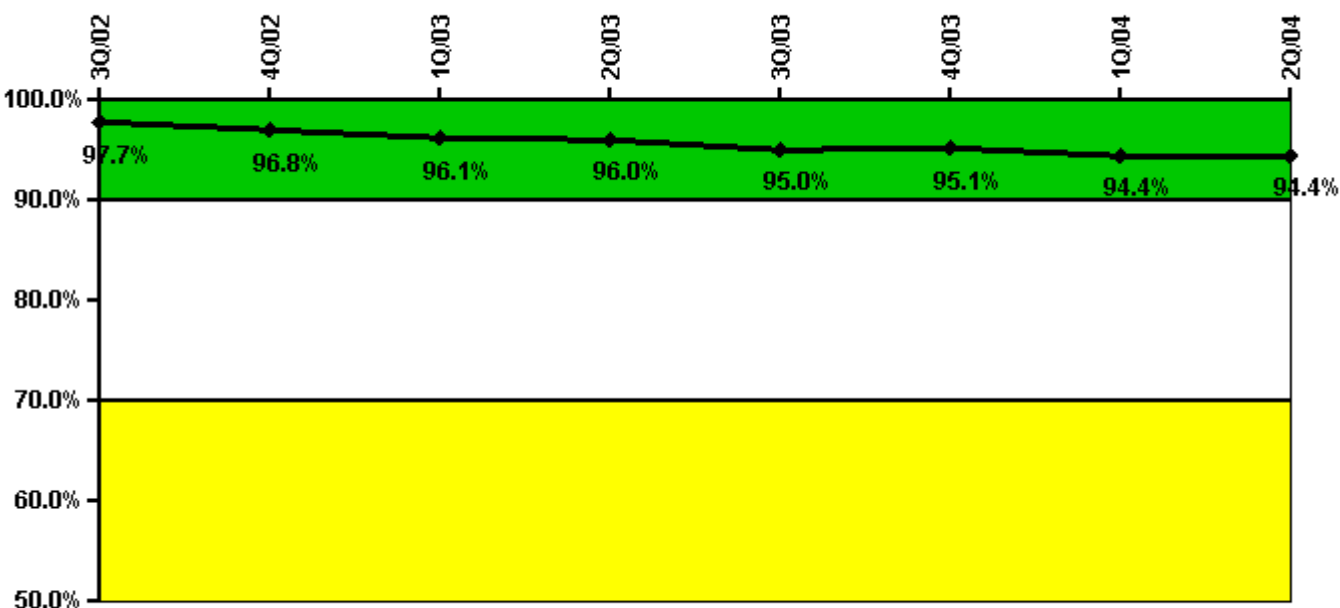
Reactor Coolant System Leakage	7/02	8/02	9/02	10/02	11/02	12/02	1/03	2/03	3/03	4/03	5/03	6/03
Maximum leakage	2.360	2.330	2.330	2.400	2.420	2.530	2.570	2.500	2.710	2.750	4.340	2.370
Technical specification limit	25.0	25.0	25.0	25.0	25.0	25.0	25.0	25.0	25.0	25.0	25.0	25.0
Indicator value	9.4	9.3	9.3	9.6	9.7	10.1	10.3	10.0	10.8	11.0	17.4	9.5

Reactor Coolant System Leakage	7/03	8/03	9/03	10/03	11/03	12/03	1/04	2/04	3/04	4/04	5/04	6/04
Maximum leakage	2.440	2.540	3.510	1.500	1.470	1.470	1.460	1.460	1.470	1.480	1.460	1.460
Technical specification limit	25.0	25.0	25.0	25.0	25.0	25.0	25.0	25.0	25.0	25.0	25.0	25.0
Indicator value	9.8	10.2	14.0	6.0	5.9	5.9	5.8	5.8	5.9	5.9	5.8	5.8

Licensee Comments:

6/04: Indicates maximum total leakage (identified plus un-identified) in gpm for each month, depicted as a percentage of the Technical Specifications limit. Technical Specifications specify un-identified and total leakage, does not specify identified leakage.

Drill/Exercise Performance



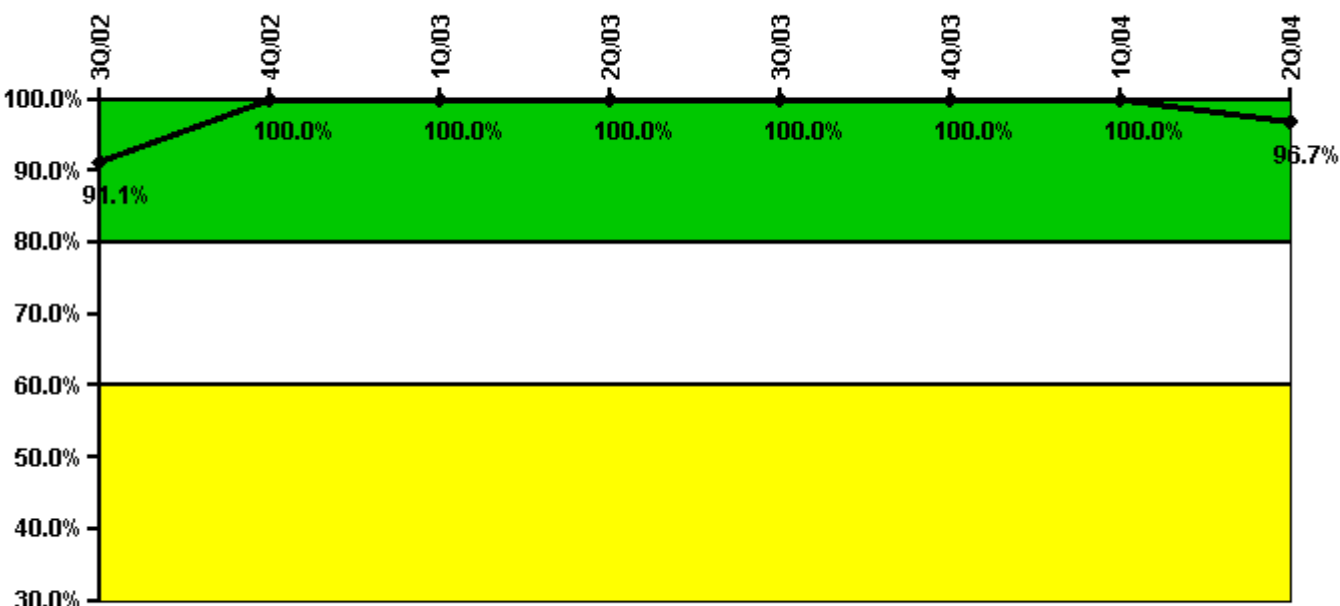
Thresholds: White < 90.0% Yellow < 70.0%

Notes

Drill/Exercise Performance	3Q/02	4Q/02	1Q/03	2Q/03	3Q/03	4Q/03	1Q/04	2Q/04
Successful opportunities	54.0	22.0	15.0	21.0	56.0	24.0	36.0	56.0
Total opportunities	56.0	24.0	17.0	22.0	60.0	24.0	40.0	58.0
Indicator value	97.7%	96.8%	96.1%	96.0%	95.0%	95.1%	94.4%	94.4%

Licensee Comments: none

ERO Drill Participation



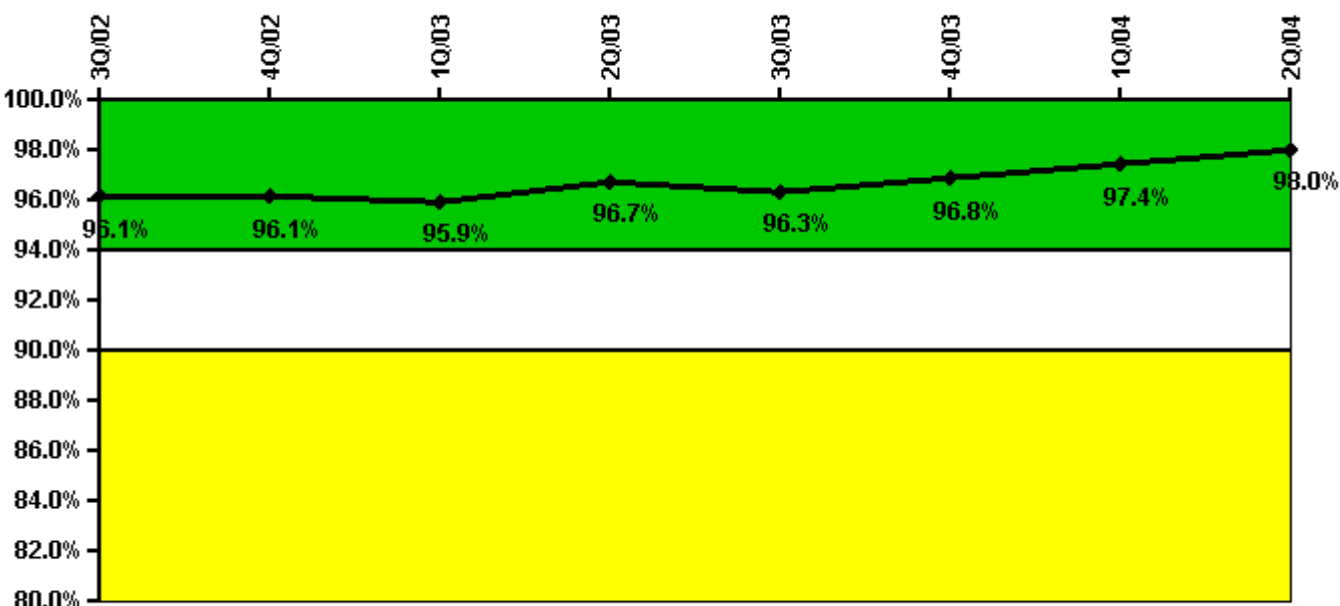
Thresholds: White < 80.0% Yellow < 60.0%

Notes

ERO Drill Participation	3Q/02	4Q/02	1Q/03	2Q/03	3Q/03	4Q/03	1Q/04	2Q/04
Participating Key personnel	51.0	58.0	57.0	56.0	55.0	55.0	59.0	59.0
Total Key personnel	56.0	58.0	57.0	56.0	55.0	55.0	59.0	61.0
Indicator value	91.1%	100.0%	100.0%	100.0%	100.0%	100.0%	100.0%	96.7%

Licensee Comments: none

Alert & Notification System



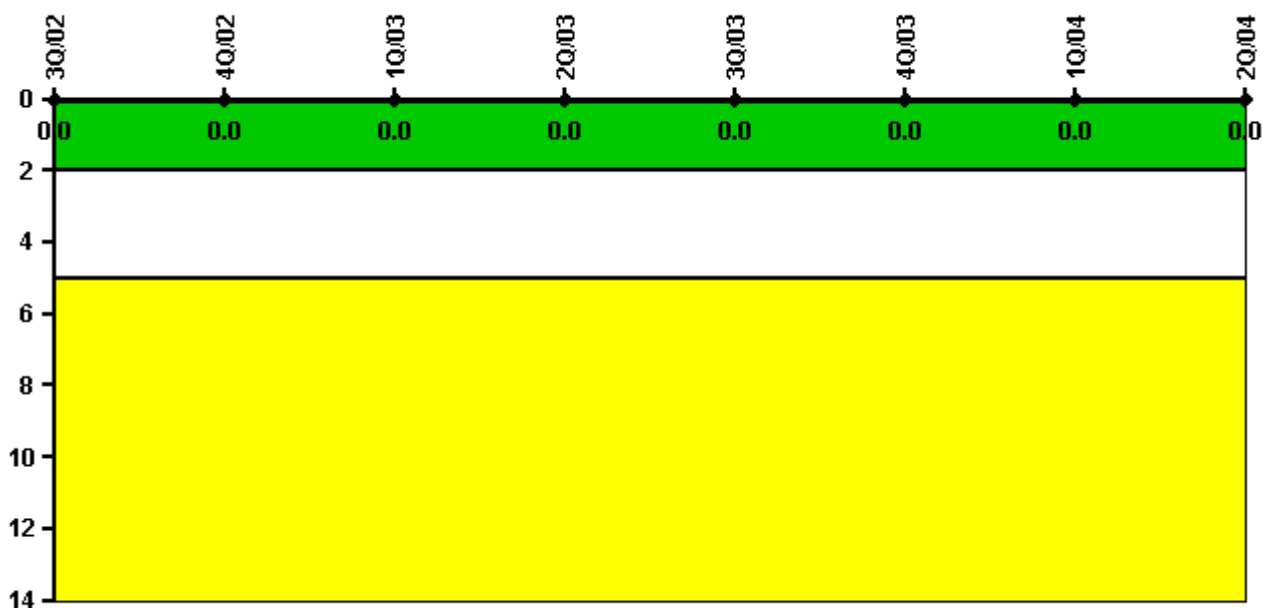
Thresholds: White < 94.0% Yellow < 90.0%

Notes

Alert & Notification System	3Q/02	4Q/02	1Q/03	2Q/03	3Q/03	4Q/03	1Q/04	2Q/04
Successful siren-tests	432	330	321	325	291	472	330	334
Total sirens-tests	448	336	336	336	307	477	336	336
Indicator value	96.1%	96.1%	95.9%	96.7%	96.3%	96.8%	97.4%	98.0%

Licensee Comments: none

Occupational Exposure Control Effectiveness



Thresholds: White > 2.0 Yellow > 5.0

Notes

Occupational Exposure Control Effectiveness	3Q/02	4Q/02	1Q/03	2Q/03	3Q/03	4Q/03	1Q/04	2Q/04
High radiation area occurrences	0	0	0	0	0	0	0	0
Very high radiation area occurrences	0	0	0	0	0	0	0	0
Unintended exposure occurrences	0	0	0	0	0	0	0	0
Indicator value	0	0	0	0	0	0	0	0

Licensee Comments: none

RETS/ODCM Radiological Effluent



Thresholds: White > 1.0 Yellow > 3.0

Notes

RETS/ODCM Radiological Effluent	3Q/02	4Q/02	1Q/03	2Q/03	3Q/03	4Q/03	1Q/04	2Q/04
RETS/ODCM occurrences	0	0	0	0	0	0	0	0
Indicator value	0	0	0	0	0	0	0	0

Licensee Comments: none

[Physical Protection](#) information not publicly available.

▲ [Action Matrix Summary](#) | [Inspection Findings Summary](#) | [PI Summary](#) | [Reactor Oversight Process](#)

Last Modified: September 8, 2004