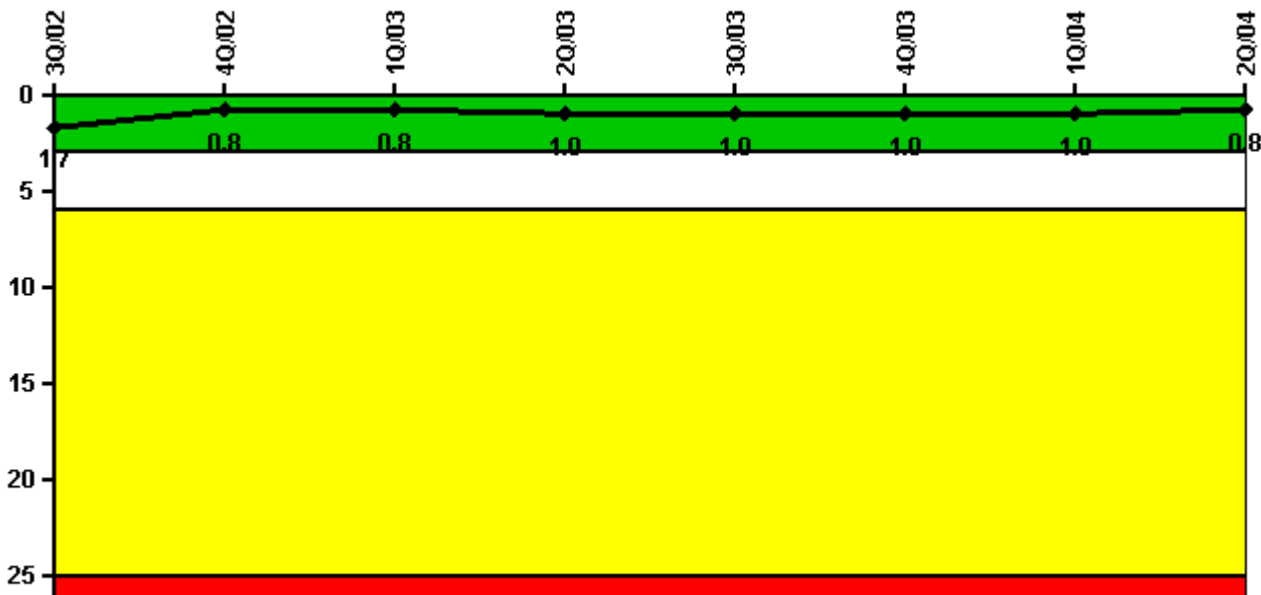


Perry 1

2Q/2004 Performance Indicators

Licensee's General Comments: none

Unplanned Scrams per 7000 Critical Hrs



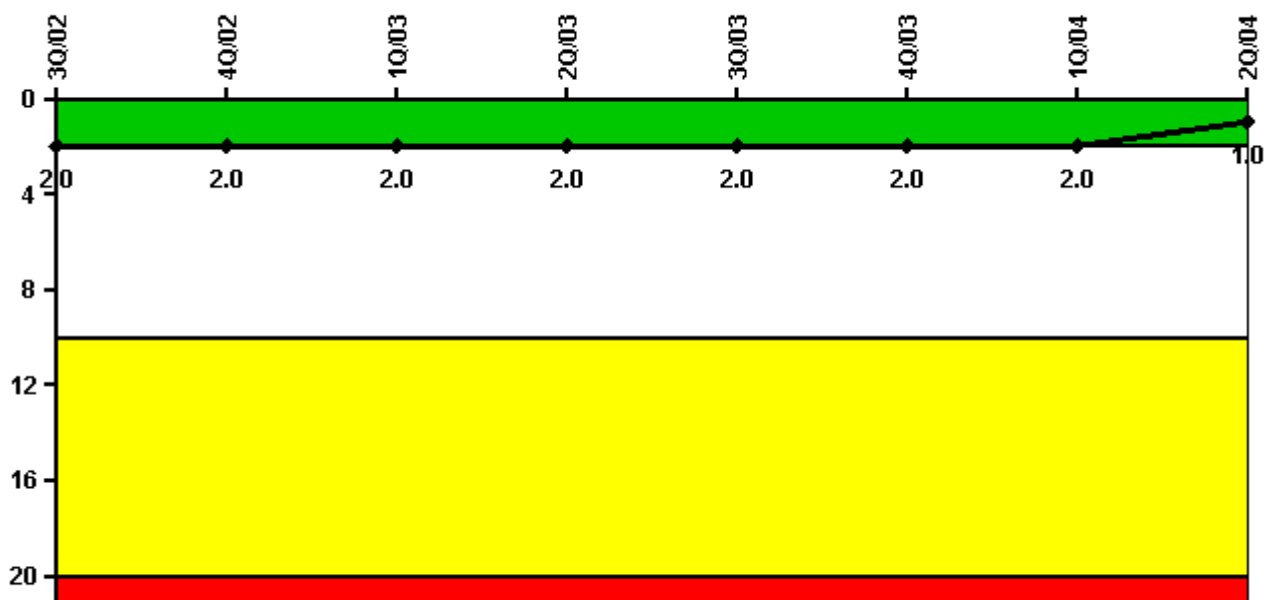
Thresholds: White > 3.0 Yellow > 6.0 Red > 25.0

Notes

Unplanned Scrams per 7000 Critical Hrs	3Q/02	4Q/02	1Q/03	2Q/03	3Q/03	4Q/03	1Q/04	2Q/04
Unplanned scrams	1.0	0	0	0	1.0	0	0	0
Critical hours	1993.7	2138.6	2160.0	900.6	2071.6	2209.0	2184.0	1880.7
Indicator value	1.7	0.8	0.8	1.0	1.0	1.0	1.0	0.8

Licensee Comments: none

Scrams with Loss of Normal Heat Removal



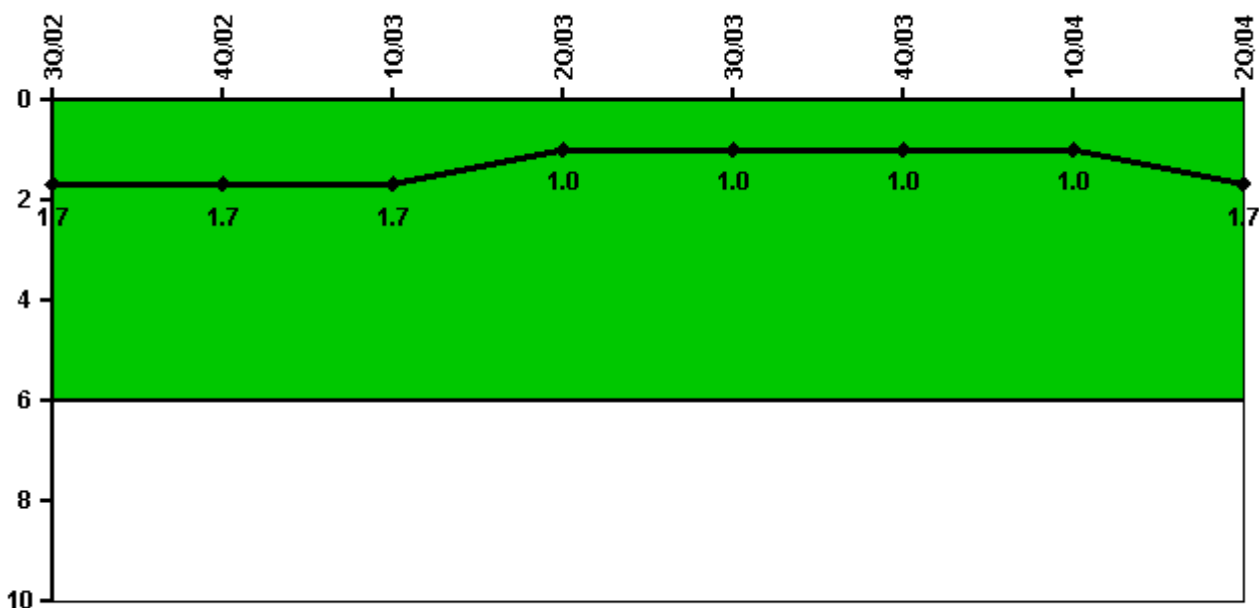
Thresholds: White > 2.0 Yellow > 10.0 Red > 20.0

Notes

Scrams with Loss of Normal Heat Removal	3Q/02	4Q/02	1Q/03	2Q/03	3Q/03	4Q/03	1Q/04	2Q/04
Scrams	0	0	0	0	0	0	0	0
Indicator value	2.0	2.0	2.0	2.0	2.0	2.0	2.0	1.0

Licensee Comments: none

Unplanned Power Changes per 7000 Critical Hrs



Thresholds: White > 6.0

Notes

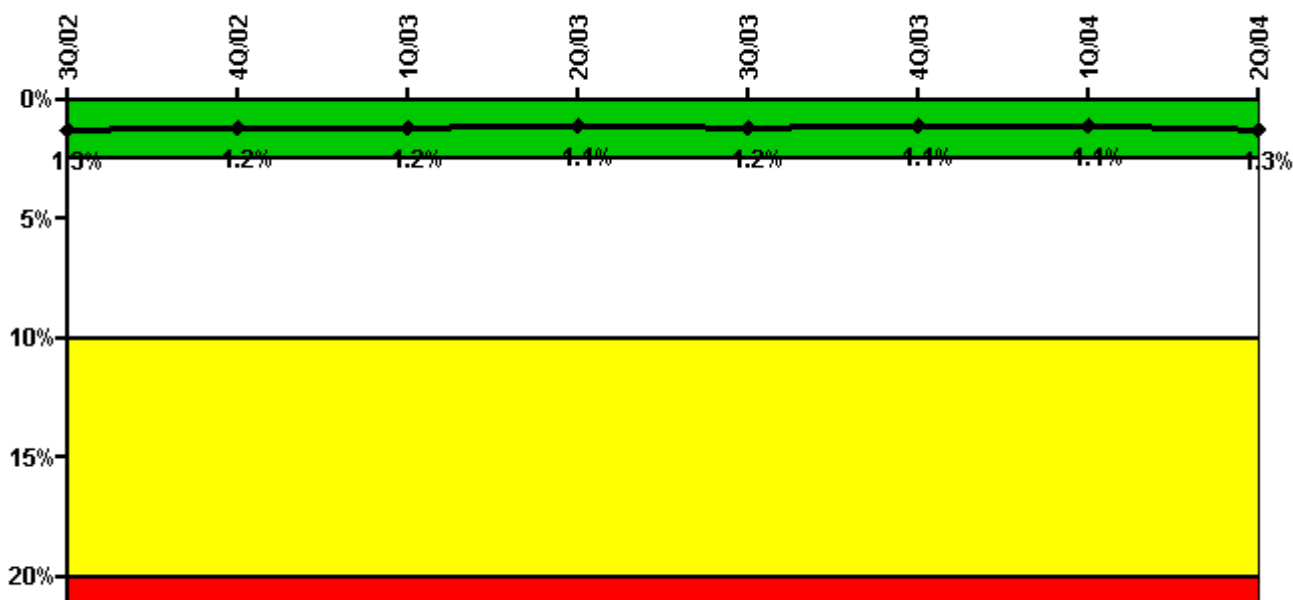
Unplanned Power Changes per 7000 Critical Hrs	3Q/02	4Q/02	1Q/03	2Q/03	3Q/03	4Q/03	1Q/04	2Q/04
Unplanned power changes	1.0	0	0	0	1.0	0	0	1.0
Critical hours	1993.7	2138.6	2160.0	900.6	2071.6	2209.0	2184.0	1880.7
Indicator value	1.7	1.7	1.7	1.0	1.0	1.0	1.0	1.7

Licensee Comments:

2Q/04: Data Correction: The data submitted for Q3 2003 has been corrected to add one unplanned power change that occurred in Sep 2003. This change does not affect the indicator color.

3Q/03: June 2004: Data corrected for Sep 2003 to reflect 1 unplanned power change rather than 0, due to re-evaluation that determined the 09/14/03 power change occurred less than 72 hours after the issue was identified.

Safety System Unavailability, Emergency AC Power, >2EDG



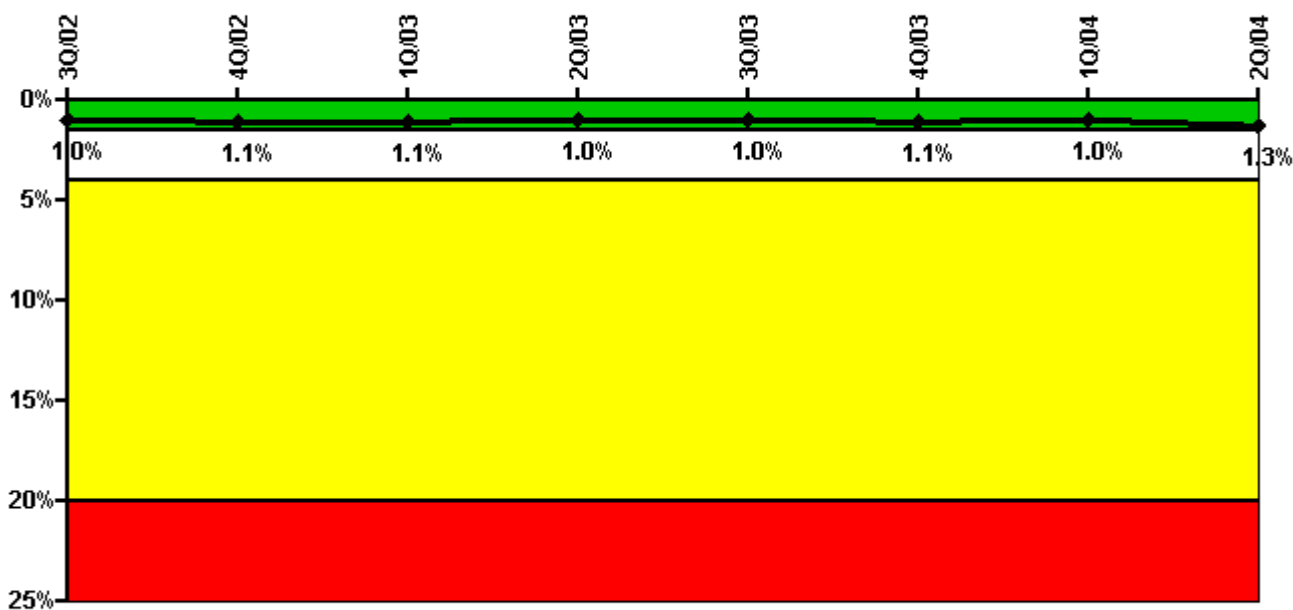
Thresholds: White > 2.5% Yellow > 10.0% Red > 20.0%

Notes

Safety System Unavailability, Emergency AC Power, >2EDG	3Q/02	4Q/02	1Q/03	2Q/03	3Q/03	4Q/03	1Q/04	2Q/04
Train 1								
Planned unavailable hours	5.80	5.05	23.02	2.47	6.71	36.21	20.15	6.92
Unplanned unavailable hours	0	0	0	0	96.17	0	0	52.48
Fault exposure hours	0	0	0	0	0	0	0	0
Effective Reset hours	0	0	0	0	0	0	0	0
Required hours	2208.00	2209.00	2160.00	2183.00	2208.00	2209.00	2184.00	2183.00
Train 2								
Planned unavailable hours	4.69	23.47	6.13	3.84	38.04	9.98	8.57	5.77
Unplanned unavailable hours	65.71	45.82	0.17	0	44.07	0	0	0
Fault exposure hours	0	0	0	0	0	0	0	0
Effective Reset hours	0	0	0	0	0	0	0	0
Required hours	2208.00	2209.00	2160.00	2183.00	2208.00	2209.00	2184.00	2183.00
Train 3								
Planned unavailable hours	1.55	12.30	30.38	3.65	2.77	29.87	1.33	126.36
Unplanned unavailable hours	0	0	0	0	0	0	0	0
Fault exposure hours	0	0	0	0	0	0	0	0
Effective Reset hours	0	0	0	0	0	0	0	0
Required hours	2208.00	2209.00	2160.00	2183.00	2208.00	2209.00	2184.00	2183.00
Indicator value	1.3%	1.2%	1.2%	1.1%	1.2%	1.1%	1.1%	1.3%

Licensee Comments: none

Safety System Unavailability, High Pressure Injection System (HPCS)



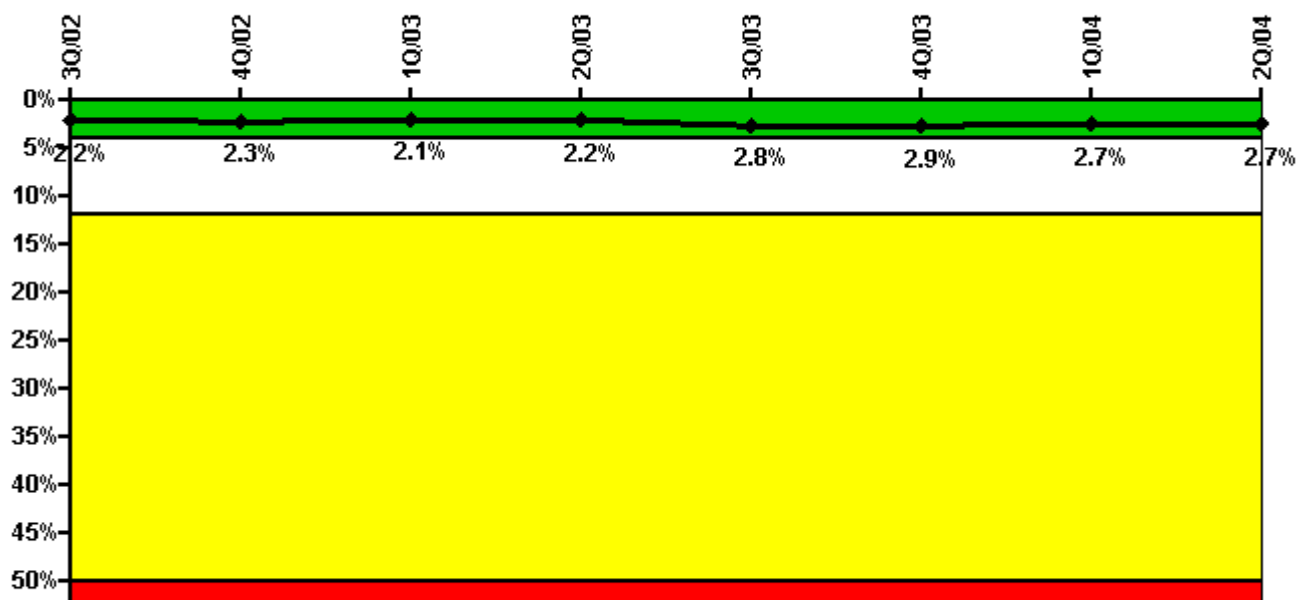
Thresholds: White > 1.5% Yellow > 4.0% Red > 20.0%

Notes

Safety System Unavailability, High Pressure Injection System (HPCS)	3Q/02	4Q/02	1Q/03	2Q/03	3Q/03	4Q/03	1Q/04	2Q/04
Train 1								
Planned unavailable hours	4.12	1.20	16.83	2.22	3.45	25.14	0.85	108.30
Unplanned unavailable hours	0	7.73	0	0	0	0	0	0
Fault exposure hours	0	0	0	0	0	0	0	0
Effective Reset hours	0	0	0	0	0	0	0	0
Required hours	1993.68	2138.60	2160.00	900.60	2071.60	2209.00	2184.00	1880.70
Indicator value	1.0%	1.1%	1.1%	1.0%	1.0%	1.1%	1.0%	1.3%

Licensee Comments: none

Safety System Unavailability, Heat Removal System (RCIC)



Thresholds: White > 4.0% Yellow > 12.0% Red > 50.0%

Notes

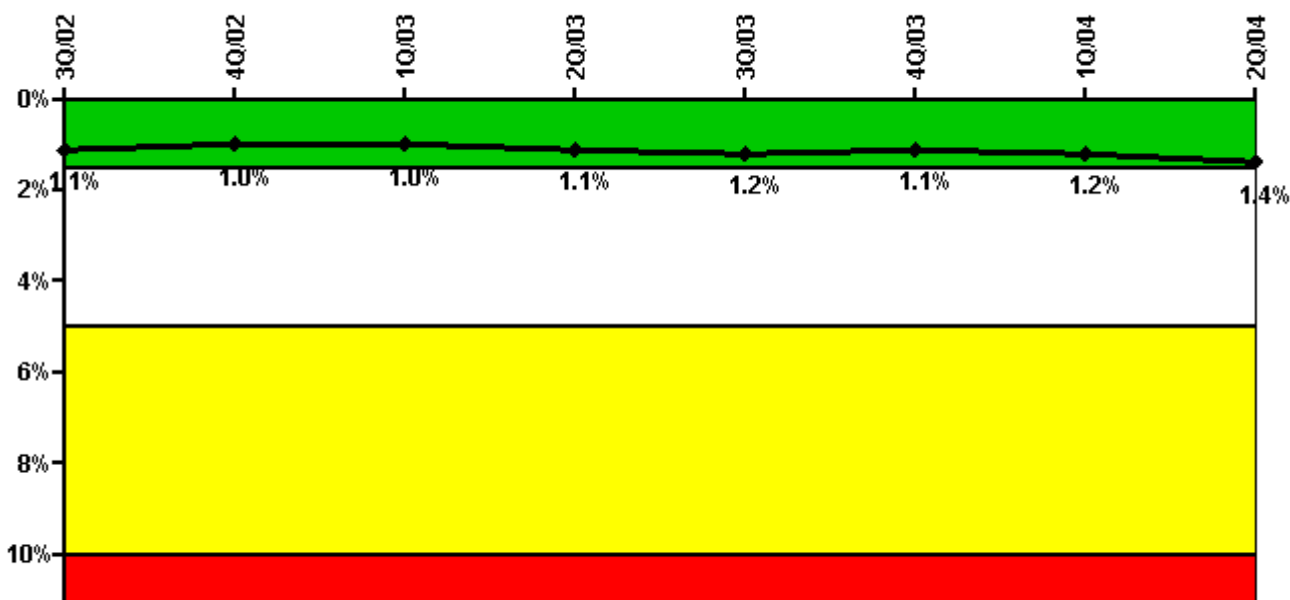
Safety System Unavailability, Heat Removal System (RCIC)	3Q/02	4Q/02	1Q/03	2Q/03	3Q/03	4Q/03	1Q/04	2Q/04
Train 1								
Planned unavailable hours	3.20	19.29	33.05	34.05	60.61	55.94	21.65	2.76
Unplanned unavailable hours	0	0	0	0	119.05	0	0	46.28
Fault exposure hours	0	0	0	0	0	0	0	0
Effective Reset hours	0	0	0	0	0	0	0	0
Required hours	1993.68	2138.60	2160.00	900.60	2071.60	2209.00	2184.00	1880.70
Indicator value	2.2%	2.3%	2.1%	2.2%	2.8%	2.9%	2.7%	2.7%

Licensee Comments:

2Q/04: Data Correction: RCIC data for Q4 2003 was corrected to include an additional 2.18 hours of unavailability due to support system unavailability. This change does not affect the indicator color.

4Q/03: June 2004: RCIC Data for Oct 03 was changed from 16.07 to 17.65, to account for additional support system unavailability. RCIC Data for Dec 03 was changed from 18.87 to 19.47, to account for additional support system unavailability.

Safety System Unavailability, Residual Heat Removal System



Thresholds: White > 1.5% Yellow > 5.0% Red > 10.0%

Notes

Safety System Unavailability, Residual Heat Removal System	3Q/02	4Q/02	1Q/03	2Q/03	3Q/03	4Q/03	1Q/04	2Q/04
Train 1								
Planned unavailable hours	3.24	0	37.72	30.08	5.98	52.97	19.50	2.05
Unplanned unavailable hours	17.63	0	0	0	116.59	0	0	108.95
Fault exposure hours	0	0	0	0	0	0	0	0
Effective Reset hours	0	0	0	0	0	0	0	0
Required hours	2208.00	2209.00	2160.00	2183.00	2208.00	2209.00	2184.00	2183.00
Train 2								
Planned unavailable hours	0.55	75.35	3.59	2.13	34.13	1.22	0.67	0
Unplanned unavailable hours	0	0	0.17	0	0.07	0	0	0
Fault exposure hours	0	0	0	0	0	0	0	0
Effective Reset hours	0	0	0	0	0	0	0	0
Required hours	2208.00	2209.00	2160.00	2183.00	2208.00	2209.00	2184.00	2183.00
Indicator value	1.1%	1.0%	1.0%	1.1%	1.2%	1.1%	1.2%	1.4%

Licensee Comments:

2Q/04: Data Correction: RHR data for Q2 2003, Q3 2003, Q4 2003, and Q1 2004 was corrected to include a total of 6.42 hours of additional unavailability due to support system unavailability. This change does not affect the indicator color.

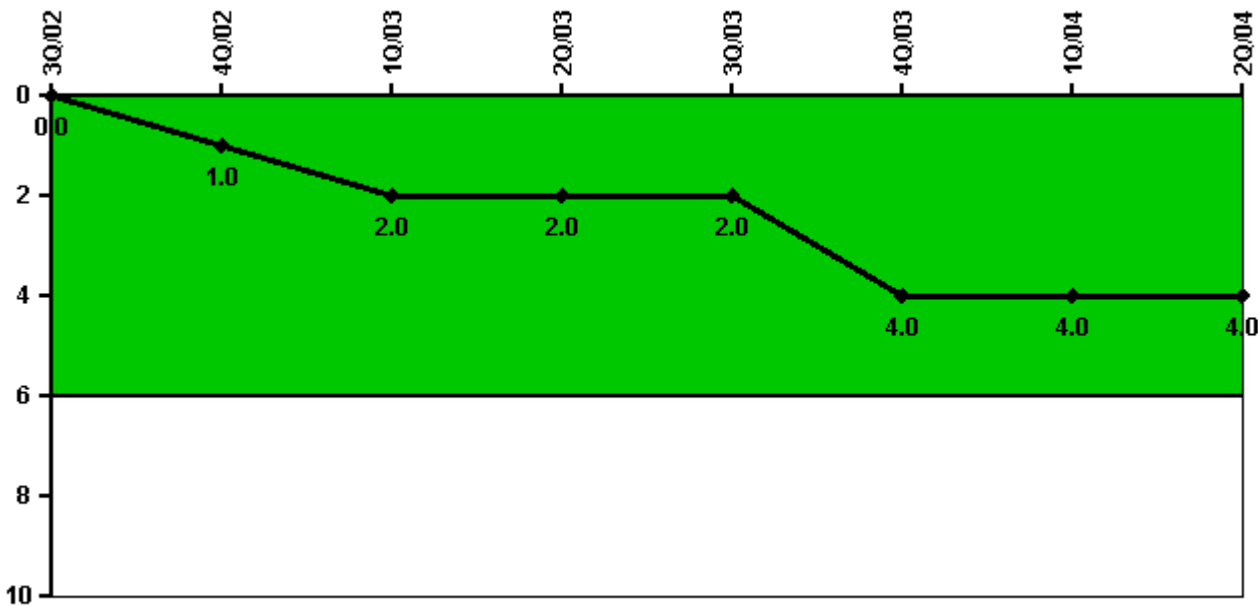
1Q/04: June 2004: RHR Train 2 Data for Feb 04 was changed from 0.35 to 0.67, to account for additional support system unavailability.

4Q/03: June 2004: RHR Train 1 Data for Oct 03 was changed from 18.88 to 20.46, to account for additional support system unavailability. RHR Train 2 Data for Nov 03 was changed from 0.92 to 1.22, to account for additional support system unavailability. RHR Train 1 Data for Dec 03 was changed from 6.48 to 7.08, to account for additional support system unavailability.

3Q/03: June 2004: RHR Train 2 Data for Aug 03 was changed from 6.98 to 8.90, to account for additional support system unavailability.

2Q/03: Historical data for May 2002 was corrected to remove 24 hours of unavailability that had been reported in error. This change has no effect on the indicator color. Correction June 2004: RHR Train 2 Data for Jun 03 was changed from 0.43 to 2.13, to account for additional support system unavailability.

Safety System Functional Failures (BWR)



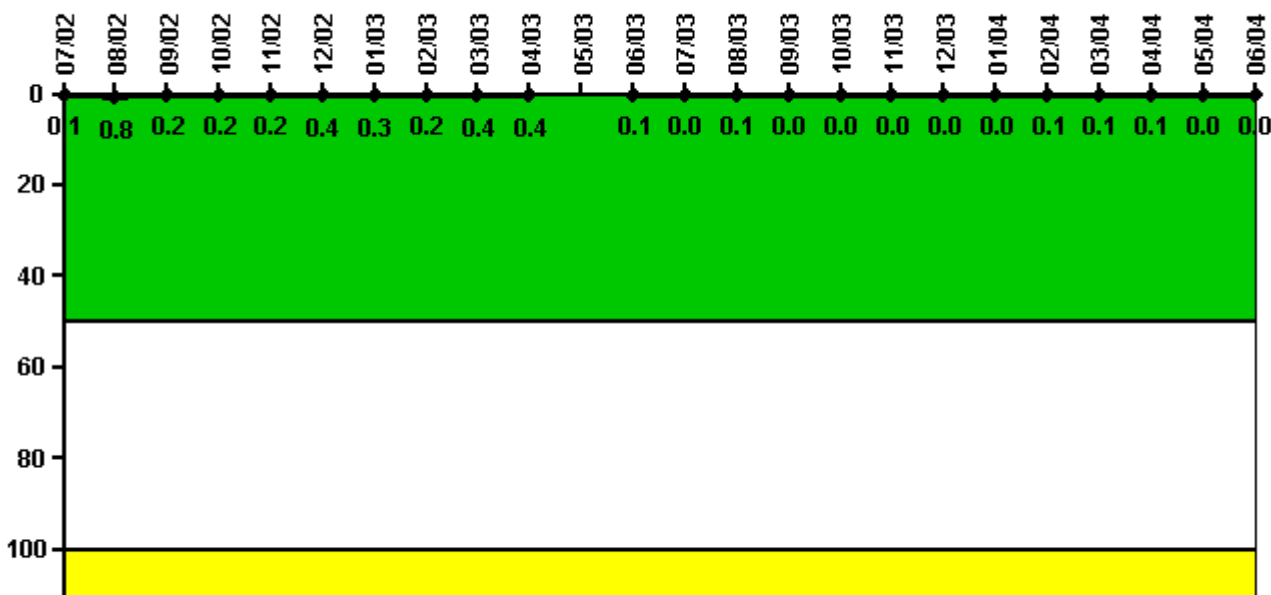
Thresholds: White > 6.0

Notes

Safety System Functional Failures (BWR)	3Q/02	4Q/02	1Q/03	2Q/03	3Q/03	4Q/03	1Q/04	2Q/04
Safety System Functional Failures	0	1	1	0	0	3	1	0
Indicator value	0	1	2	2	2	4	4	4

Licensee Comments: none

Reactor Coolant System Activity



Thresholds: White > 50.0 Yellow > 100.0

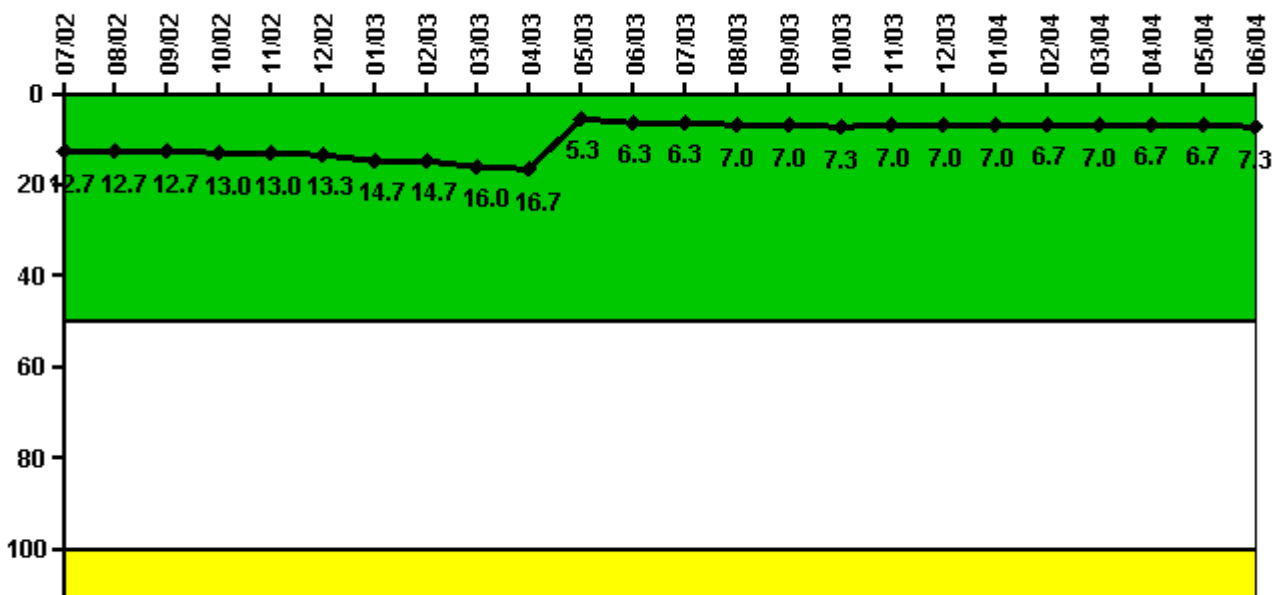
Notes

Reactor Coolant System Activity	7/02	8/02	9/02	10/02	11/02	12/02	1/03	2/03	3/03	4/03	5/03	6/03
Maximum activity	0.000158	0.001530	0.000397	0.000460	0.000438	0.000823	0.000525	0.000497	0.000766	0.000734	N/A	0.000109
Technical specification limit	0.2	0.2	0.2	0.2	0.2	0.2	0.2	0.2	0.2	0.2	0.2	0.2
Indicator value	0.1	0.8	0.2	0.2	0.2	0.4	0.3	0.2	0.4	0.4	N/A	0.1

Reactor Coolant System Activity	7/03	8/03	9/03	10/03	11/03	12/03	1/04	2/04	3/04	4/04	5/04	6/04
Maximum activity	0.000090	0.000124	0.000067	0.000059	0.000066	0.000087	0.000073	0.000112	0.000109	0.000100	0.000098	0.000064
Technical specification limit	0.2	0.2	0.2	0.2	0.2	0.2	0.2	0.2	0.2	0.2	0.2	0.2
Indicator value	0	0.1	0	0	0	0	0	0.1	0.1	0.1	0	0

Licensee Comments: none

Reactor Coolant System Leakage



Thresholds: White > 50.0 Yellow > 100.0

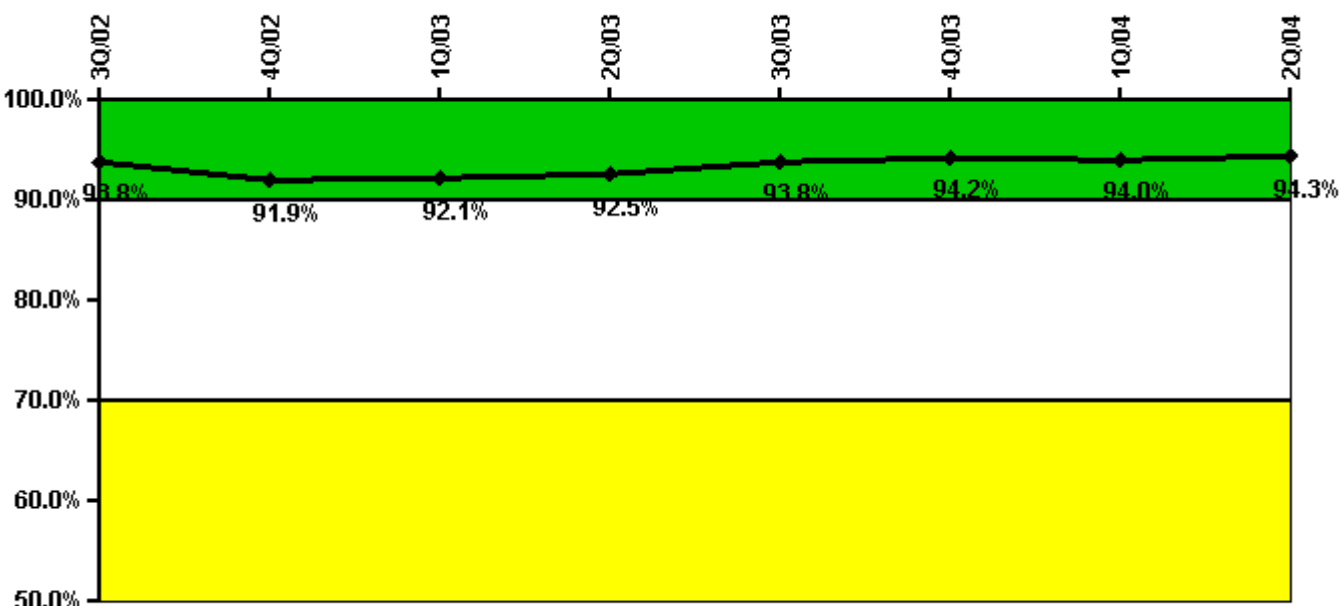
Notes

Reactor Coolant System Leakage	7/02	8/02	9/02	10/02	11/02	12/02	1/03	2/03	3/03	4/03	5/03	6/03
Maximum leakage	3.800	3.800	3.800	3.900	3.900	4.000	4.400	4.400	4.800	5.000	1.600	1.900
Technical specification limit	30.0	30.0	30.0	30.0	30.0	30.0	30.0	30.0	30.0	30.0	30.0	30.0
Indicator value	12.7	12.7	12.7	13.0	13.0	13.3	14.7	14.7	16.0	16.7	5.3	6.3

Reactor Coolant System Leakage	7/03	8/03	9/03	10/03	11/03	12/03	1/04	2/04	3/04	4/04	5/04	6/04
Maximum leakage	1.900	2.100	2.100	2.200	2.100	2.100	2.100	2.000	2.100	2.000	2.000	2.200
Technical specification limit	30.0	30.0	30.0	30.0	30.0	30.0	30.0	30.0	30.0	30.0	30.0	30.0
Indicator value	6.3	7.0	7.0	7.3	7.0	7.0	7.0	6.7	7.0	6.7	6.7	7.3

Licensee Comments: none

Drill/Exercise Performance



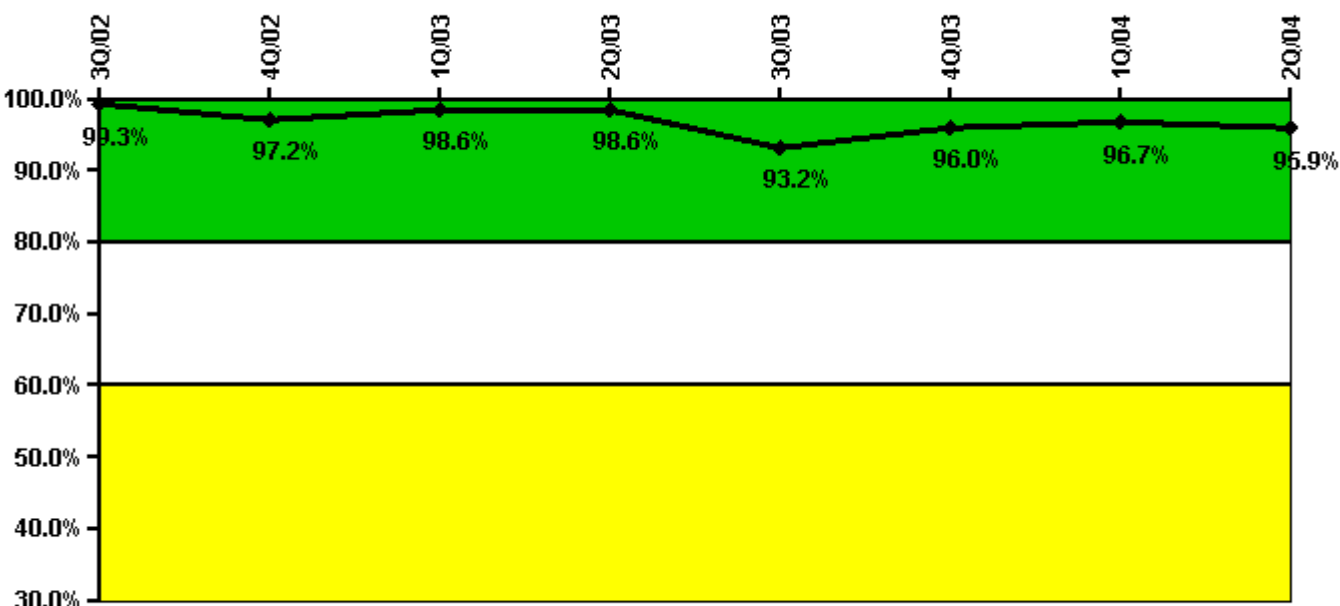
Thresholds: White < 90.0% Yellow < 70.0%

Notes

Drill/Exercise Performance	3Q/02	4Q/02	1Q/03	2Q/03	3Q/03	4Q/03	1Q/04	2Q/04
Successful opportunities	16.0	21.0	17.0	10.0	2.0	38.0	14.0	15.0
Total opportunities	18.0	24.0	18.0	11.0	2.0	38.0	14.0	16.0
Indicator value	93.8%	91.9%	92.1%	92.5%	93.8%	94.2%	94.0%	94.3%

Licensee Comments: none

ERO Drill Participation



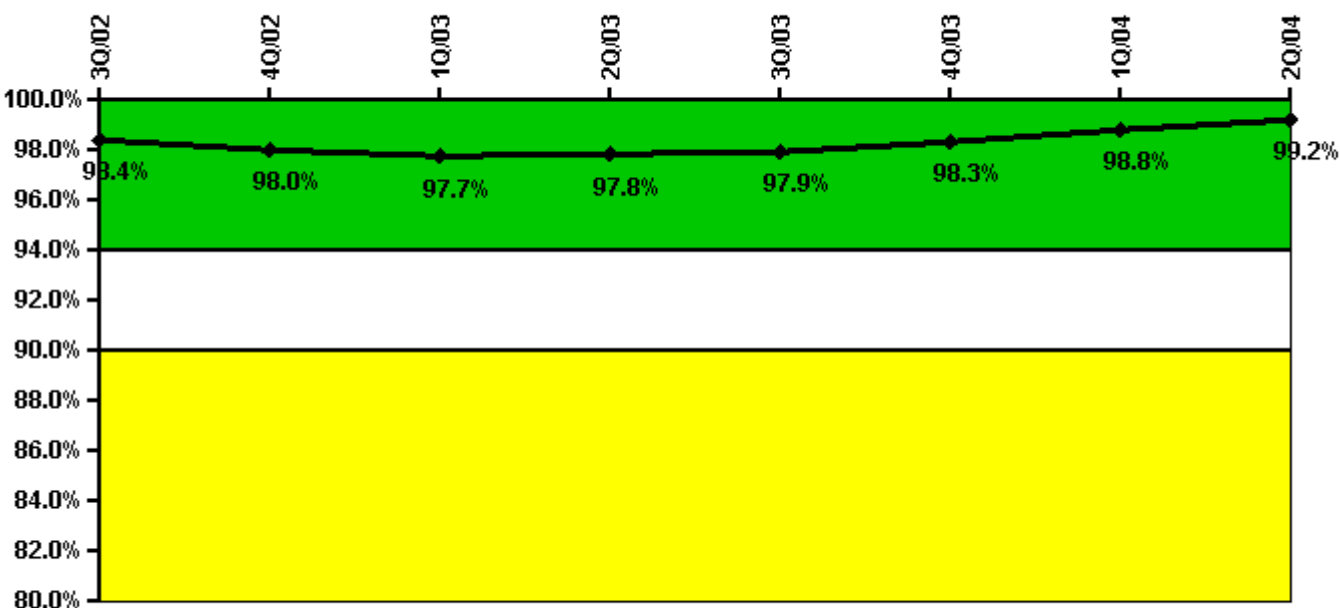
Thresholds: White < 80.0% Yellow < 60.0%

Notes

ERO Drill Participation	3Q/02	4Q/02	1Q/03	2Q/03	3Q/03	4Q/03	1Q/04	2Q/04
Participating Key personnel	144.0	140.0	144.0	137.0	137.0	144.0	146.0	141.0
Total Key personnel	145.0	144.0	146.0	139.0	147.0	150.0	151.0	147.0
Indicator value	99.3%	97.2%	98.6%	98.6%	93.2%	96.0%	96.7%	95.9%

Licensee Comments: none

Alert & Notification System



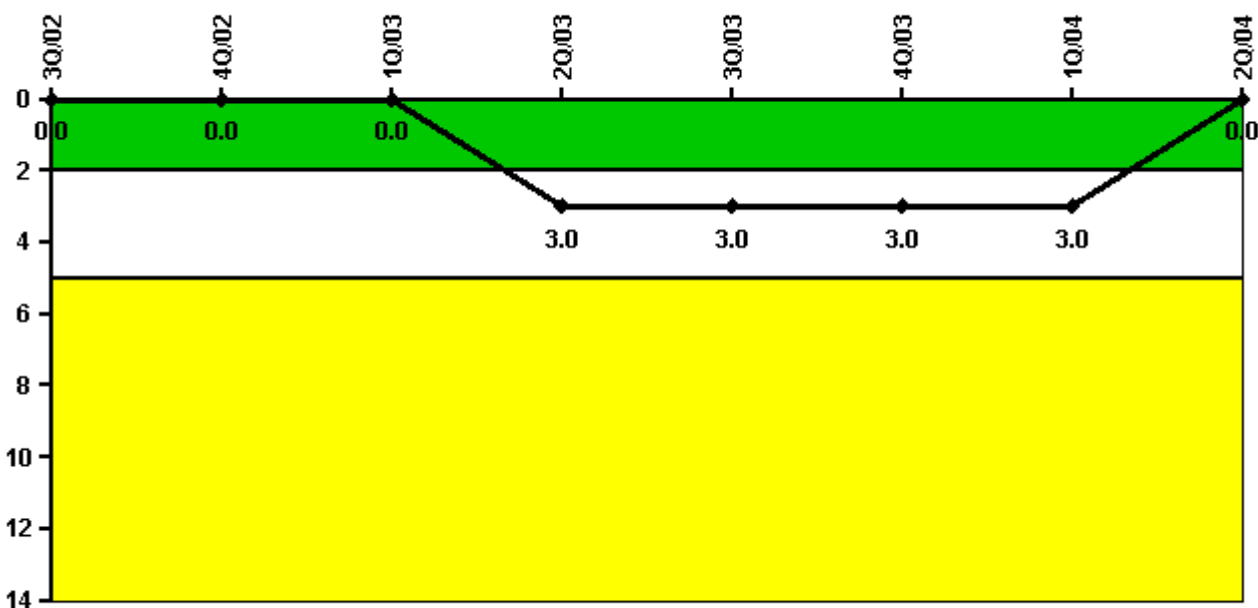
Thresholds: White < 94.0% Yellow < 90.0%

Notes

Alert & Notification System	3Q/02	4Q/02	1Q/03	2Q/03	3Q/03	4Q/03	1Q/04	2Q/04
Successful siren-tests	596	445	594	520	525	452	530	454
Total sirens-tests	608	456	608	532	532	456	532	456
Indicator value	98.4%	98.0%	97.7%	97.8%	97.9%	98.3%	98.8%	99.2%

Licensee Comments: none

Occupational Exposure Control Effectiveness



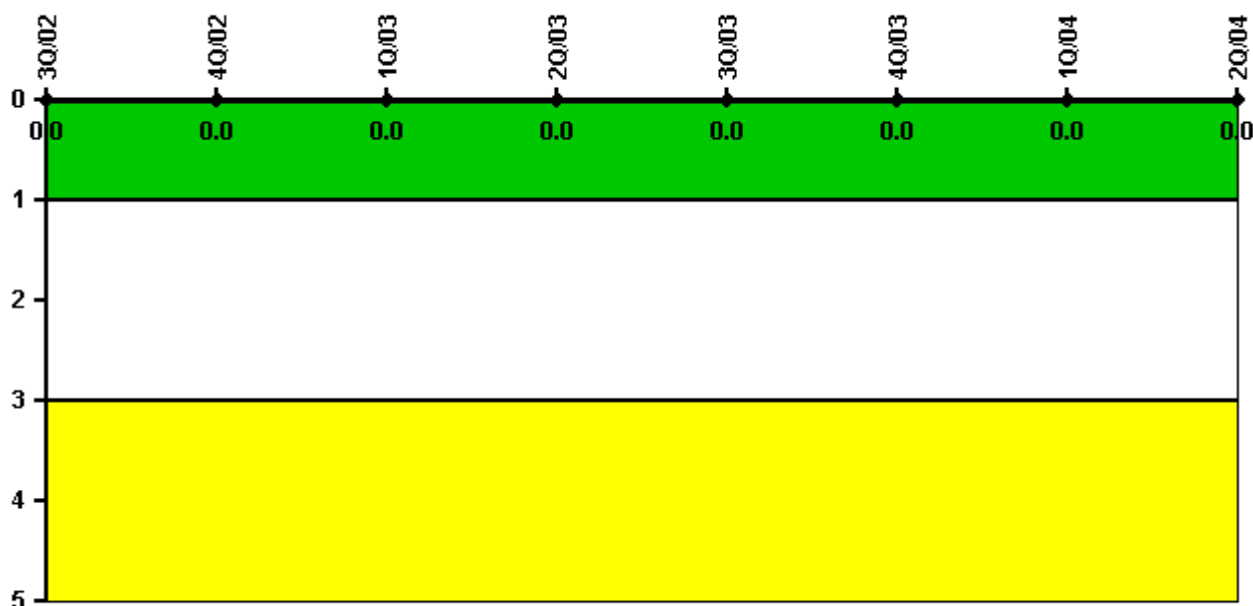
Thresholds: White > 2.0 Yellow > 5.0

Notes

Occupational Exposure Control Effectiveness	3Q/02	4Q/02	1Q/03	2Q/03	3Q/03	4Q/03	1Q/04	2Q/04
High radiation area occurrences	0	0	0	1	0	0	0	0
Very high radiation area occurrences	0	0	0	0	0	0	0	0
Unintended exposure occurrences	0	0	0	2	0	0	0	0
Indicator value	0	0	0	3	3	3	3	0

Licensee Comments: none

RETS/ODCM Radiological Effluent



Thresholds: White > 1.0 Yellow > 3.0

Notes

RETS/ODCM Radiological Effluent	3Q/02	4Q/02	1Q/03	2Q/03	3Q/03	4Q/03	1Q/04	2Q/04
RETS/ODCM occurrences	0	0	0	0	0	0	0	0
Indicator value	0	0	0	0	0	0	0	0

Licensee Comments: none

[Physical Protection](#) information not publicly available.

▲ [Action Matrix Summary](#) | [Inspection Findings Summary](#) | [PI Summary](#) | [Reactor Oversight Process](#)

Last Modified: September 8, 2004