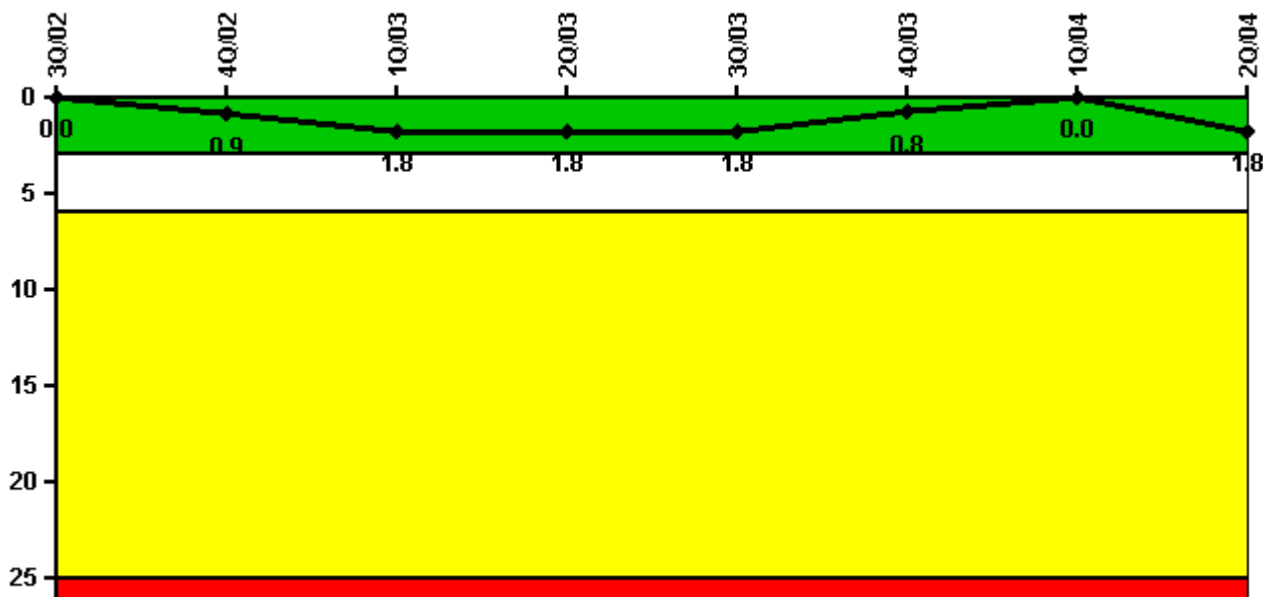


Palo Verde 1

2Q/2004 Performance Indicators

Licensee's General Comments: none

Unplanned Scrams per 7000 Critical Hrs



Thresholds: White > 3.0 Yellow > 6.0 Red > 25.0

Notes

Unplanned Scrams per 7000 Critical Hrs	3Q/02	4Q/02	1Q/03	2Q/03	3Q/03	4Q/03	1Q/04	2Q/04
Unplanned scrams	0	1.0	1.0	0	0	0	0	2.0
Critical hours	2136.0	1450.1	2057.8	2184.0	2170.9	2208.0	2094.3	1216.0
Indicator value	0	0.9	1.8	1.8	1.8	0.8	0	1.8

Licensee Comments: none

Scrams with Loss of Normal Heat Removal



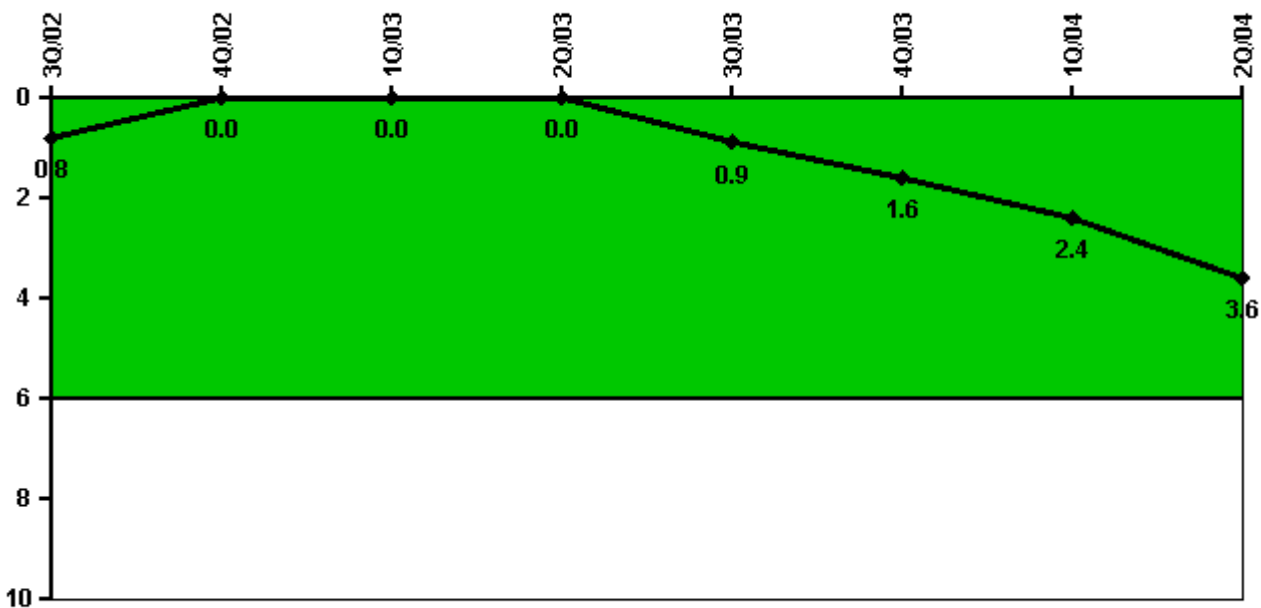
Thresholds: White > 2.0 Yellow > 10.0 Red > 20.0

Notes

Scrams with Loss of Normal Heat Removal	3Q/02	4Q/02	1Q/03	2Q/03	3Q/03	4Q/03	1Q/04	2Q/04
Scrams	0	0	0	0	0	0	0	0
Indicator value	0	0	0	0	0	0	0	0

Licensee Comments: none

Unplanned Power Changes per 7000 Critical Hrs



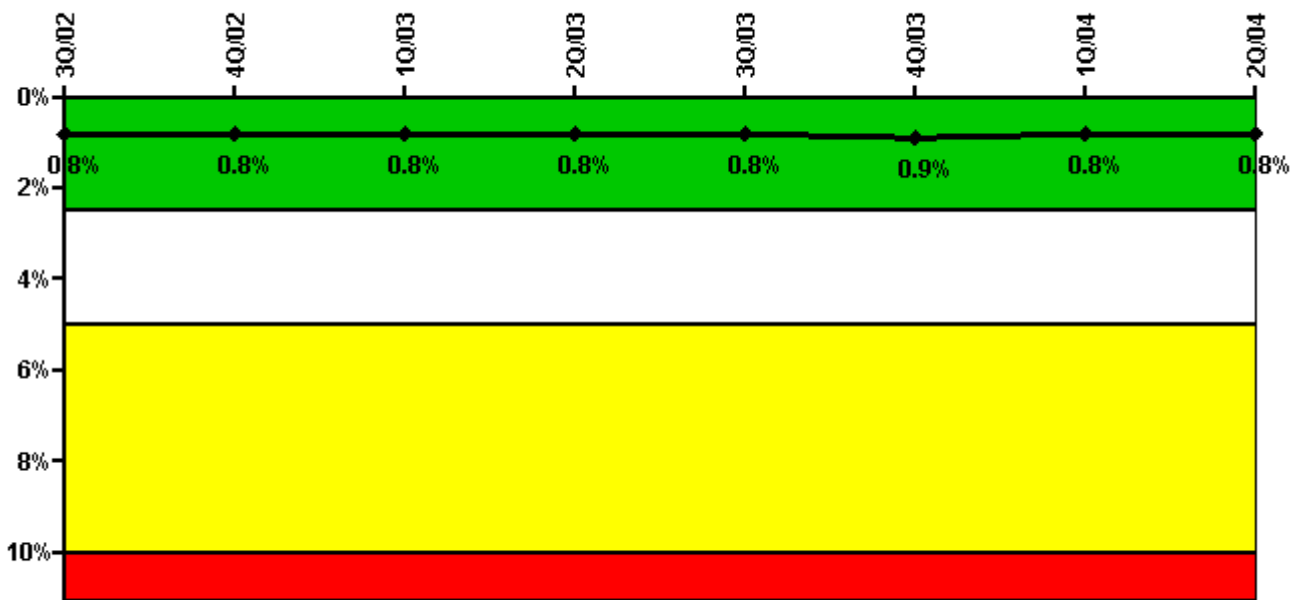
Thresholds: White > 6.0

Notes

Unplanned Power Changes per 7000 Critical Hrs	3Q/02	4Q/02	1Q/03	2Q/03	3Q/03	4Q/03	1Q/04	2Q/04
Unplanned power changes	0	0	0	0	1.0	1.0	1.0	1.0
Critical hours	2136.0	1450.1	2057.8	2184.0	2170.9	2208.0	2094.3	1216.0
Indicator value	0.8	0	0	0	0.9	1.6	2.4	3.6

Licensee Comments: none

Safety System Unavailability, Emergency AC Power



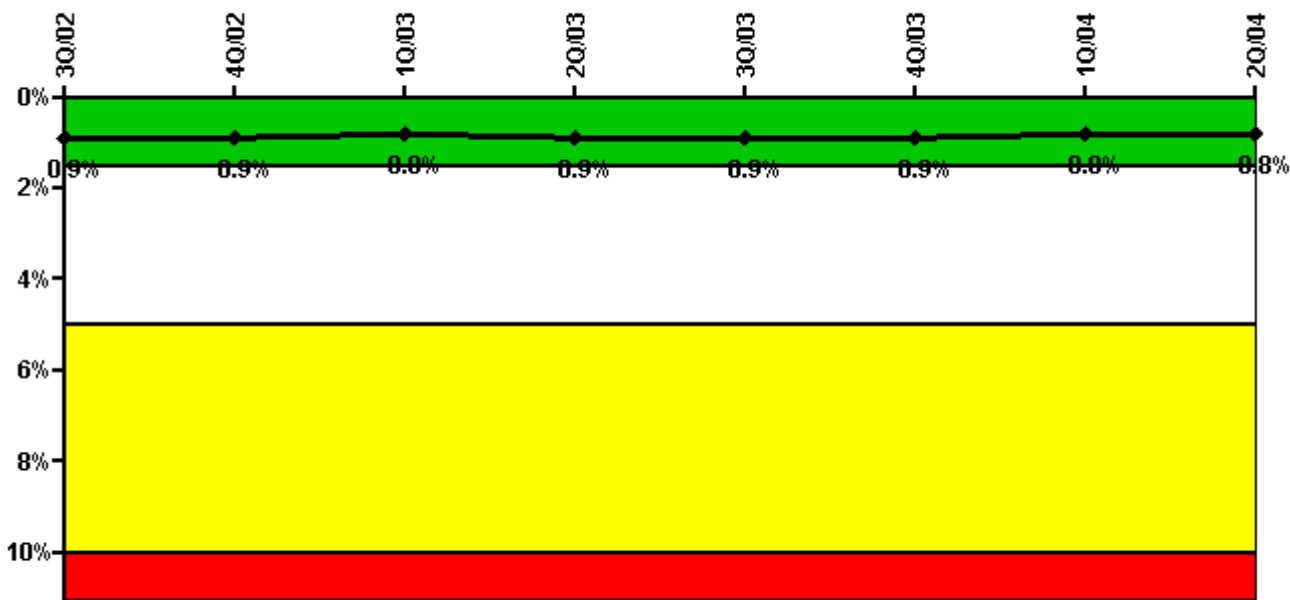
Thresholds: White > 2.5% Yellow > 5.0% Red > 10.0%

Notes

Safety System Unavailability, Emergency AC Power	3Q/02	4Q/02	1Q/03	2Q/03	3Q/03	4Q/03	1Q/04	2Q/04
Train 1								
Planned unavailable hours	28.09	20.35	0.04	19.80	0.07	31.67	0.52	0.04
Unplanned unavailable hours	0	0	0	0	0	0	0	0
Fault exposure hours	0	0	0	0	0	0	0	0
Effective Reset hours	0	0	0	0	0	0	0	0
Required hours	2208.00	2208.00	2160.00	2184.00	2208.00	2208.00	2184.00	2184.00
Train 2								
Planned unavailable hours	0.06	18.19	0.12	27.00	0.06	32.24	0.02	0.04
Unplanned unavailable hours	0	0	31.37	0	0	0	2.20	0
Fault exposure hours	0	0	0	0	0	0	0	0
Effective Reset hours	0	0	0	0	0	0	0	0
Required hours	2208.00	2208.00	2160.00	2184.00	2208.00	2208.00	2184.00	2184.00
Indicator value	0.8%	0.8%	0.8%	0.8%	0.8%	0.9%	0.8%	0.8%

Licensee Comments: none

Safety System Unavailability, High Pressure Injection System (HPSI)



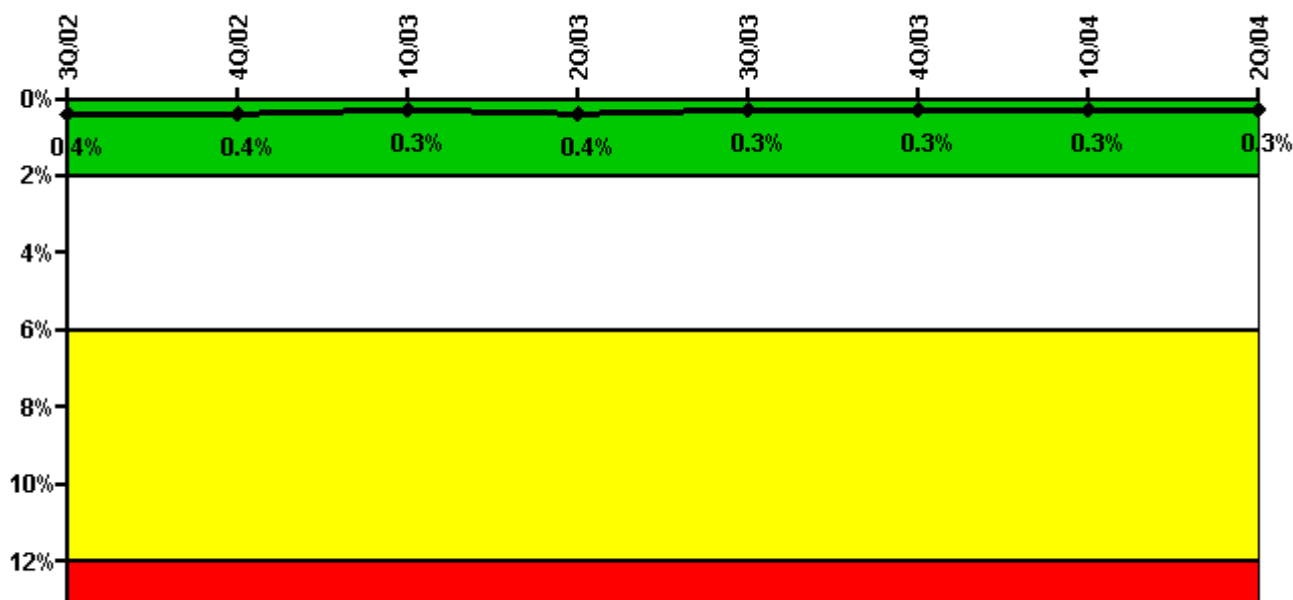
Thresholds: White > 1.5% Yellow > 5.0% Red > 10.0%

Notes

Safety System Unavailability, High Pressure Injection System (HPSI)	3Q/02	4Q/02	1Q/03	2Q/03	3Q/03	4Q/03	1Q/04	2Q/04
Train 1								
Planned unavailable hours	28.53	12.75	6.55	14.95	4.97	15.23	10.90	5.85
Unplanned unavailable hours	2.58	0	0	0	0	0	0	0
Fault exposure hours	0	0	0	0	0	0	0	0
Effective Reset hours	0	0	0	0	0	0	0	0
Required hours	2136.00	1450.11	2057.75	2184.00	2170.92	2208.00	2094.30	1216.00
Train 2								
Planned unavailable hours	8.98	23.22	7.27	34.15	0.78	15.54	19.57	28.94
Unplanned unavailable hours	1.85	0	13.13	0	0	0	0	2.42
Fault exposure hours	0	0	0	0	0	0	0	0
Effective Reset hours	0	0	0	0	0	0	0	0
Required hours	2136.00	1450.11	2057.75	2184.00	2170.92	2208.00	2094.30	1216.00
Indicator value	0.9%	0.9%	0.8%	0.9%	0.9%	0.9%	0.8%	0.8%

Licensee Comments: none

Safety System Unavailability, Heat Removal System (AFW)



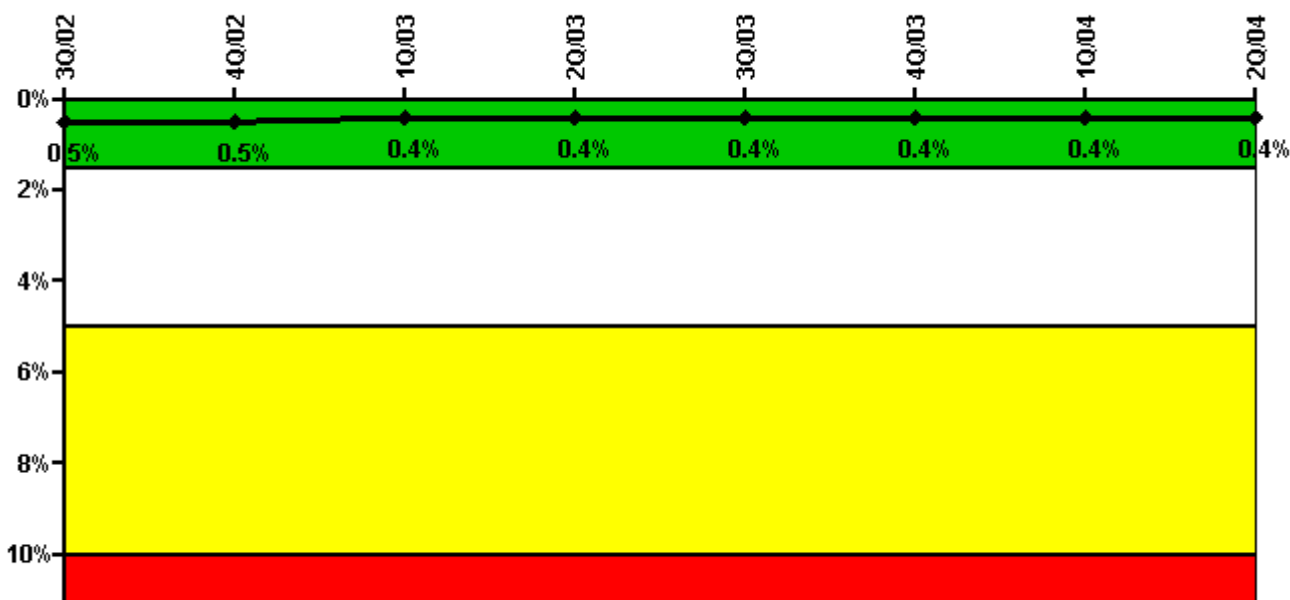
Thresholds: White > 2.0% Yellow > 6.0% Red > 12.0%

Notes

Safety System Unavailability, Heat Removal System (AFW)	3Q/02	4Q/02	1Q/03	2Q/03	3Q/03	4Q/03	1Q/04	2Q/04
Train 1								
Planned unavailable hours	12.51	18.22	1.34	14.38	1.14	13.65	2.25	0.67
Unplanned unavailable hours	2.58	0	0	0	0	0	0	0
Fault exposure hours	0	0	0	0	0	0	0	0
Effective Reset hours	0	0	0	0	0	0	0	0
Required hours	2136.00	1450.11	2057.75	2184.00	2170.92	2208.00	2094.30	1216.00
Train 2								
Planned unavailable hours	0.60	10.15	0.55	33.20	2.23	7.70	15.38	0.20
Unplanned unavailable hours	0	0	0	0	0	0	0	2.42
Fault exposure hours	0	0	0	0	0	0	0	0
Effective Reset hours	0	0	0	0	0	0	0	0
Required hours	2136.00	1450.11	2057.75	2184.00	2170.92	2208.00	2094.30	1216.00
Train 3								
Planned unavailable hours	1.15	0.62	0.87	0.35	0.52	0.58	0.62	0
Unplanned unavailable hours	0	0	0	0	0	0	0	0
Fault exposure hours	0	0	0	0	0	0	0	0
Effective Reset hours	0	0	0	0	0	0	0	0
Required hours	2136.00	1450.11	2057.75	2184.00	2170.92	2208.00	2094.30	1216.00
Indicator value	0.4%	0.4%	0.3%	0.4%	0.3%	0.3%	0.3%	0.3%

Licensee Comments: none

Safety System Unavailability, Residual Heat Removal System

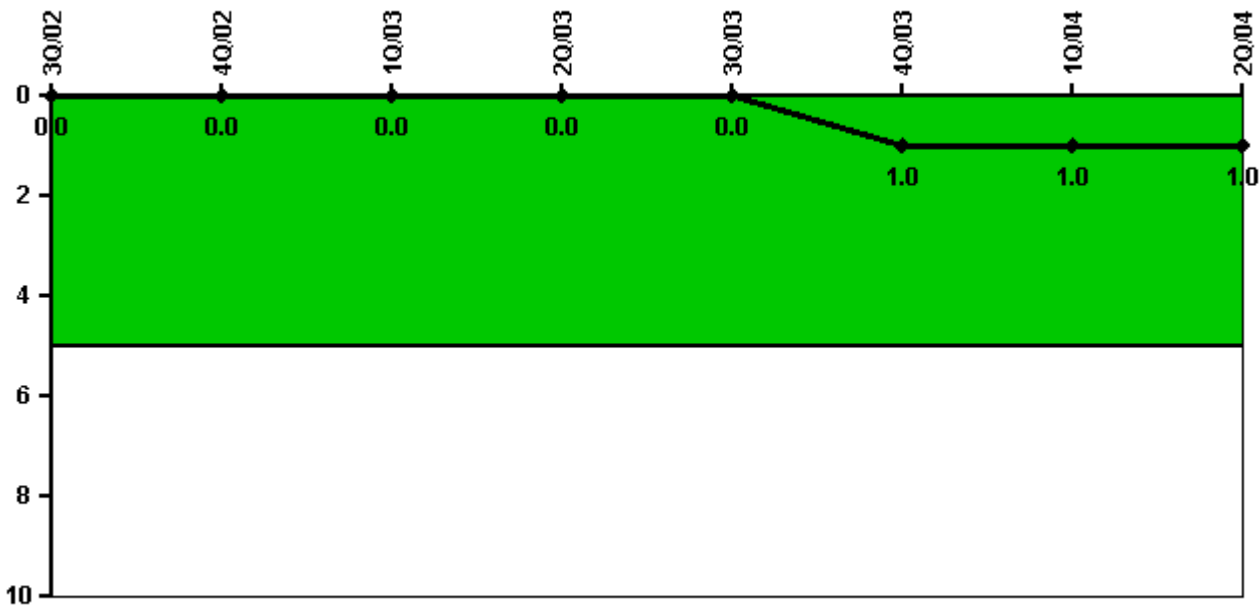


Thresholds: White > 1.5% Yellow > 5.0% Red > 10.0%

Notes

Safety System Unavailability, Residual Heat Removal System	3Q/02	4Q/02	1Q/03	2Q/03	3Q/03	4Q/03	1Q/04	2Q/04
Train 1								
Planned unavailable hours	33.90	17.93	2.50	12.43	1.45	16.77	2.54	13.30
Unplanned unavailable hours	2.58	0	0	0	0	0	0	0
Fault exposure hours	0	0	0	0	0	0	0	0
Effective Reset hours	0	0	0	0	0	0	0	0
Required hours	2147.85	1551.82	2087.47	2184.00	2208.00	2208.00	2140.32	1387.70
Train 2								
Planned unavailable hours	17.08	16.30	3.48	37.61	2.28	14.10	24.82	5.17
Unplanned unavailable hours	1.85	0	0	0	0	0	0	2.42
Fault exposure hours	0	0	0	0	0	0	0	0
Effective Reset hours	0	0	0	0	0	0	0	0
Required hours	2147.85	1551.82	2087.47	2184.00	2208.00	2208.00	2140.32	1387.70
Train 3								
Planned unavailable hours	0.02	0	0	0	0	0	0	0
Unplanned unavailable hours	0.95	0	0	0	0	0	0	0
Fault exposure hours	0	0	0	0	0	0	0	0
Effective Reset hours	0	0	0	0	0	0	0	0
Required hours	45.67	212.52	0	0	0	0	0	397.71
Train 4								
Planned unavailable hours	0	0.02	0	0	0	0	0	0
Unplanned unavailable hours	0	0	0	0	0	0	0	0
Fault exposure hours	0	0	0	0	0	0	0	0
Effective Reset hours	0	0	0	0	0	0	0	0
Required hours	50.52	331.02	56.68	0	0	0	33.88	434.17
Indicator value	0.5%	0.5%	0.4%	0.4%	0.4%	0.4%	0.4%	0.4%

Safety System Functional Failures (PWR)



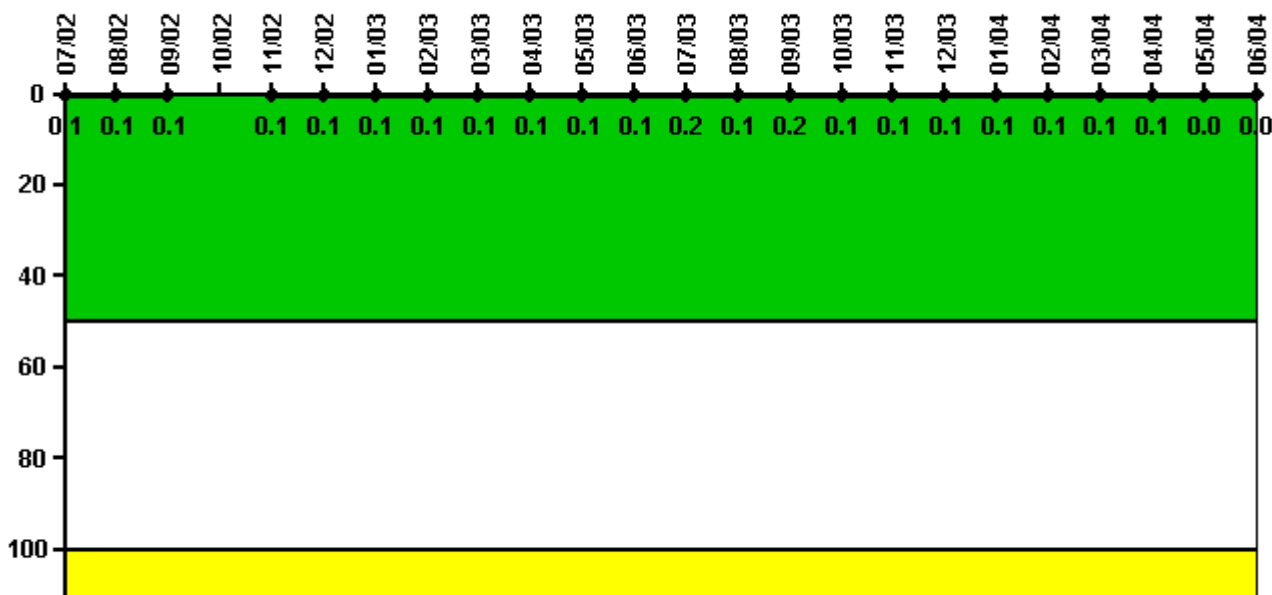
Thresholds: White > 5.0

Notes

Safety System Functional Failures (PWR)	3Q/02	4Q/02	1Q/03	2Q/03	3Q/03	4Q/03	1Q/04	2Q/04
Safety System Functional Failures	0	0	0	0	0	1	0	0
Indicator value	0	0	0	0	0	1	1	1

Licensee Comments: none

Reactor Coolant System Activity



Thresholds: White > 50.0 Yellow > 100.0

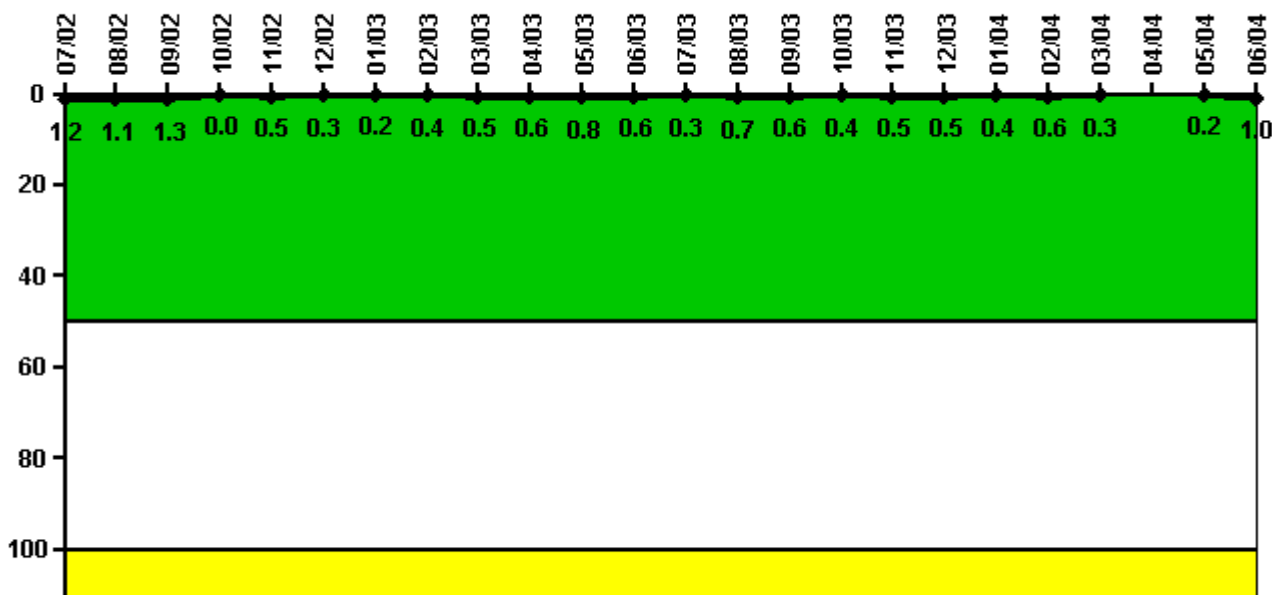
Notes

Reactor Coolant System Activity	7/02	8/02	9/02	10/02	11/02	12/02	1/03	2/03	3/03	4/03	5/03	6/03
Maximum activity	0.001000	0.001000	0.001000	N/A	0.001000	0.001000	0.001000	0.001000	0.001000	0.001000	0.001000	0.001000
Technical specification limit	1.0	1.0	1.0	N/A	1.0	1.0	1.0	1.0	1.0	1.0	1.0	1.0
Indicator value	0.1	0.1	0.1	N/A	0.1	0.1	0.1	0.1	0.1	0.1	0.1	0.1

Reactor Coolant System Activity	7/03	8/03	9/03	10/03	11/03	12/03	1/04	2/04	3/04	4/04	5/04	6/04
Maximum activity	0.002000	0.001000	0.002000	0.000948	0.001030	0.000977	0.001080	0.001050	0.001100	0.001120	0.000431	0.000458
Technical specification limit	1.0	1.0	1.0	1.0	1.0	1.0	1.0	1.0	1.0	1.0	1.0	1.0
Indicator value	0.2	0.1	0.2	0.1	0.1	0.1	0.1	0.1	0.1	0.1	0	0

Licensee Comments: none

Reactor Coolant System Leakage



Thresholds: White > 50.0 Yellow > 100.0

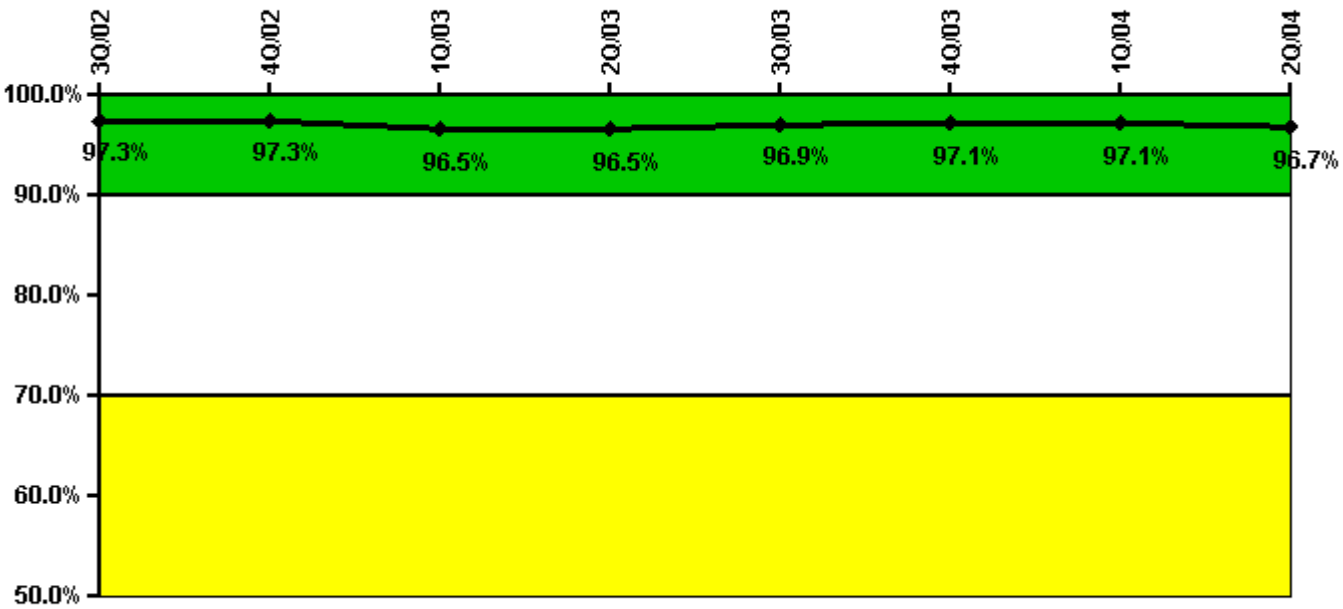
Notes

Reactor Coolant System Leakage	7/02	8/02	9/02	10/02	11/02	12/02	1/03	2/03	3/03	4/03	5/03	6/03
Maximum leakage	0.115	0.107	0.126	0	0.047	0.034	0.018	0.036	0.047	0.063	0.077	0.056
Technical specification limit	10.0	10.0	10.0	10.0	10.0	10.0	10.0	10.0	10.0	10.0	10.0	10.0
Indicator value	1.2	1.1	1.3	0	0.5	0.3	0.2	0.4	0.5	0.6	0.8	0.6
Reactor Coolant System Leakage	7/03	8/03	9/03	10/03	11/03	12/03	1/04	2/04	3/04	4/04	5/04	6/04
Maximum leakage	0.027	0.068	0.057	0.035	0.050	0.051	0.044	0.055	0.026	N/A	0.022	0.098
Technical specification limit	10.0	10.0	10.0	10.0	10.0	10.0	10.0	10.0	10.0	10.0	10.0	10.0
Indicator value	0.3	0.7	0.6	0.4	0.5	0.5	0.4	0.6	0.3	N/A	0.2	1.0

Licensee Comments:

6/04: Unit 1 was in a refueling outage for the month of April.

Drill/Exercise Performance



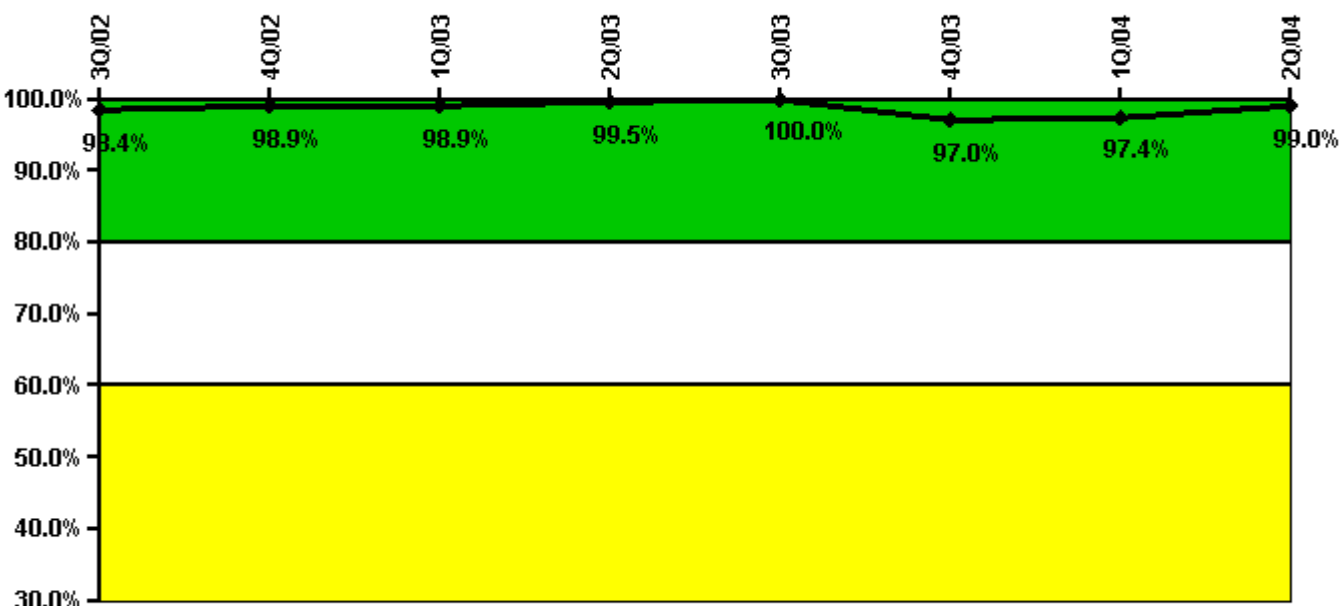
Thresholds: White < 90.0% Yellow < 70.0%

Notes

Drill/Exercise Performance	3Q/02	4Q/02	1Q/03	2Q/03	3Q/03	4Q/03	1Q/04	2Q/04
Successful opportunities	108.0	137.0	14.0	8.0	280.0	38.0	19.0	14.0
Total opportunities	110.0	141.0	18.0	8.0	287.0	38.0	20.0	17.0
Indicator value	97.3%	97.3%	96.5%	96.5%	96.9%	97.1%	97.1%	96.7%

Licensee Comments: none

ERO Drill Participation



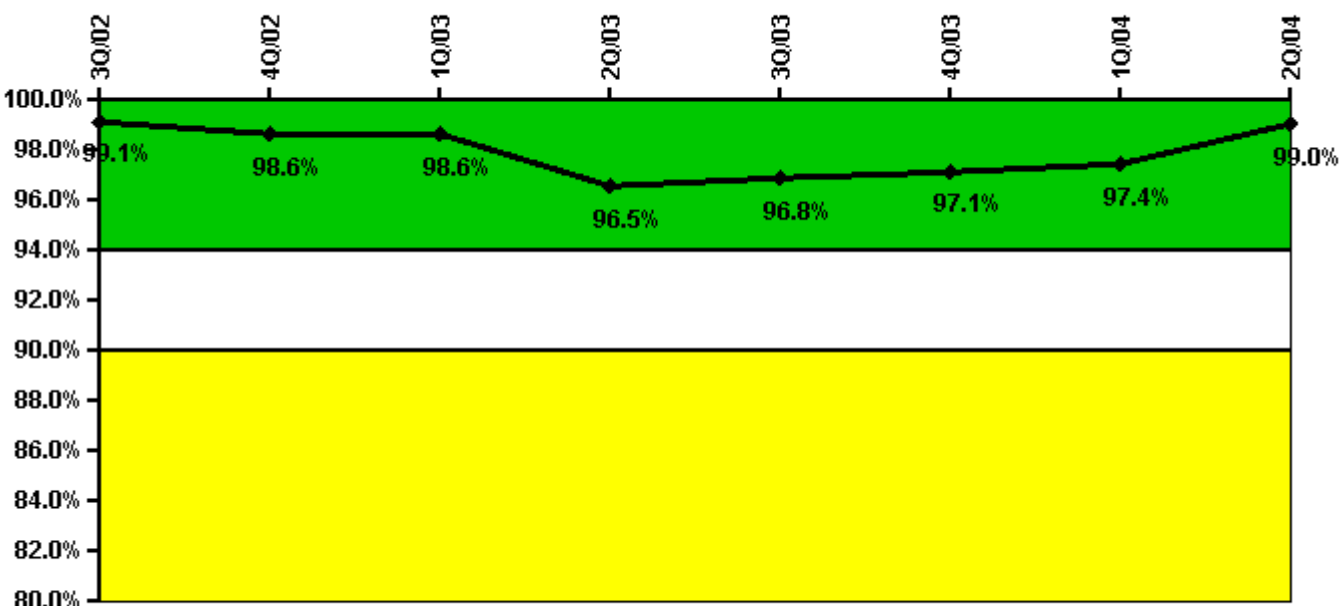
Thresholds: White < 80.0% Yellow < 60.0%

Notes

ERO Drill Participation	3Q/02	4Q/02	1Q/03	2Q/03	3Q/03	4Q/03	1Q/04	2Q/04
Participating Key personnel	190.0	183.0	181.0	181.0	182.0	194.0	189.0	193.0
Total Key personnel	193.0	185.0	183.0	182.0	182.0	200.0	194.0	195.0
Indicator value	98.4%	98.9%	98.9%	99.5%	100.0%	97.0%	97.4%	99.0%

Licensee Comments: none

Alert & Notification System



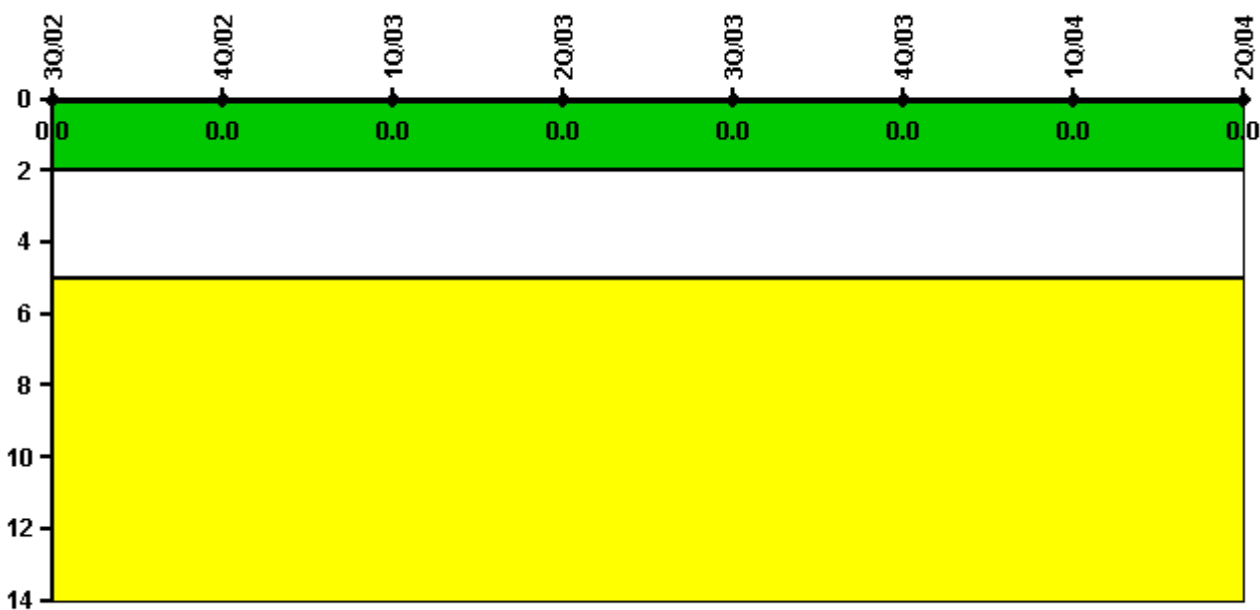
Thresholds: White < 94.0% Yellow < 90.0%

Notes

Alert & Notification System	3Q/02	4Q/02	1Q/03	2Q/03	3Q/03	4Q/03	1Q/04	2Q/04
Successful siren-tests	351	459	349	503	700	867	712	798
Total sirens-tests	360	468	349	546	714	882	714	798
Indicator value	99.1%	98.6%	98.6%	96.5%	96.8%	97.1%	97.4%	99.0%

Licensee Comments: none

Occupational Exposure Control Effectiveness



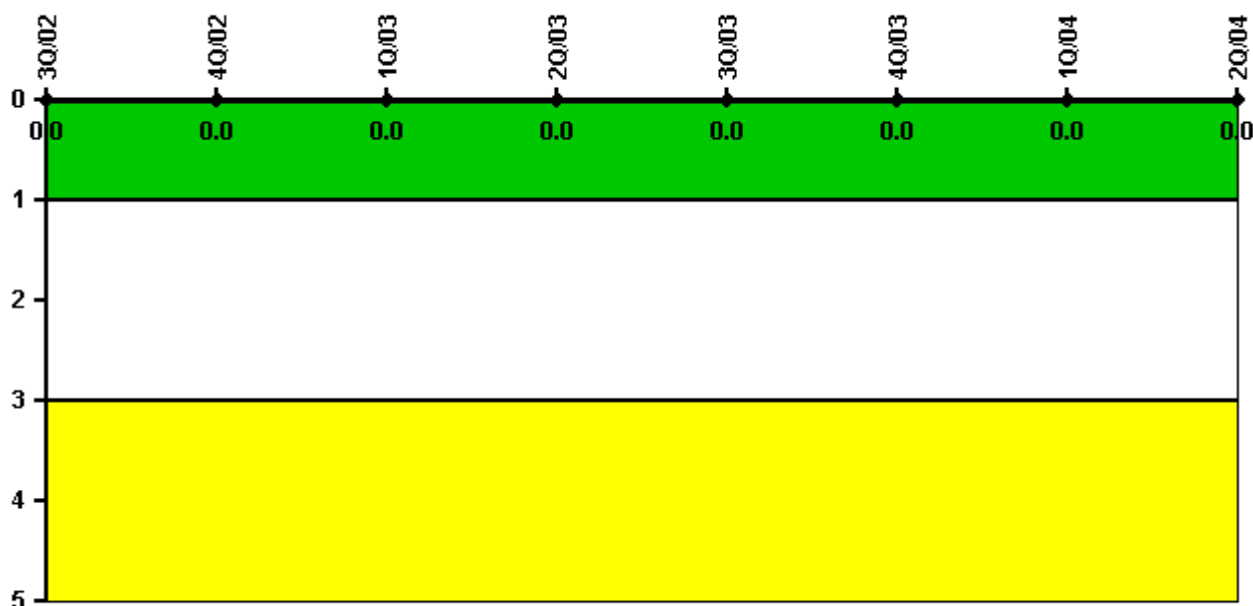
Thresholds: White > 2.0 Yellow > 5.0

Notes

Occupational Exposure Control Effectiveness	3Q/02	4Q/02	1Q/03	2Q/03	3Q/03	4Q/03	1Q/04	2Q/04
High radiation area occurrences	0	0	0	0	0	0	0	0
Very high radiation area occurrences	0	0	0	0	0	0	0	0
Unintended exposure occurrences	0	0	0	0	0	0	0	0
Indicator value	0	0	0	0	0	0	0	0

Licensee Comments: none

RETS/ODCM Radiological Effluent



Thresholds: White > 1.0 Yellow > 3.0

Notes

RETS/ODCM Radiological Effluent	3Q/02	4Q/02	1Q/03	2Q/03	3Q/03	4Q/03	1Q/04	2Q/04
RETS/ODCM occurrences	0	0	0	0	0	0	0	0
Indicator value	0	0	0	0	0	0	0	0

Licensee Comments: none

[Physical Protection](#) information not publicly available.

▲ [Action Matrix Summary](#) | [Inspection Findings Summary](#) | [PI Summary](#) | [Reactor Oversight Process](#)

Last Modified: September 8, 2004