

Palisades

2Q/2004 Performance Indicators

Licensee's General Comments: none

Unplanned Scrams per 7000 Critical Hrs



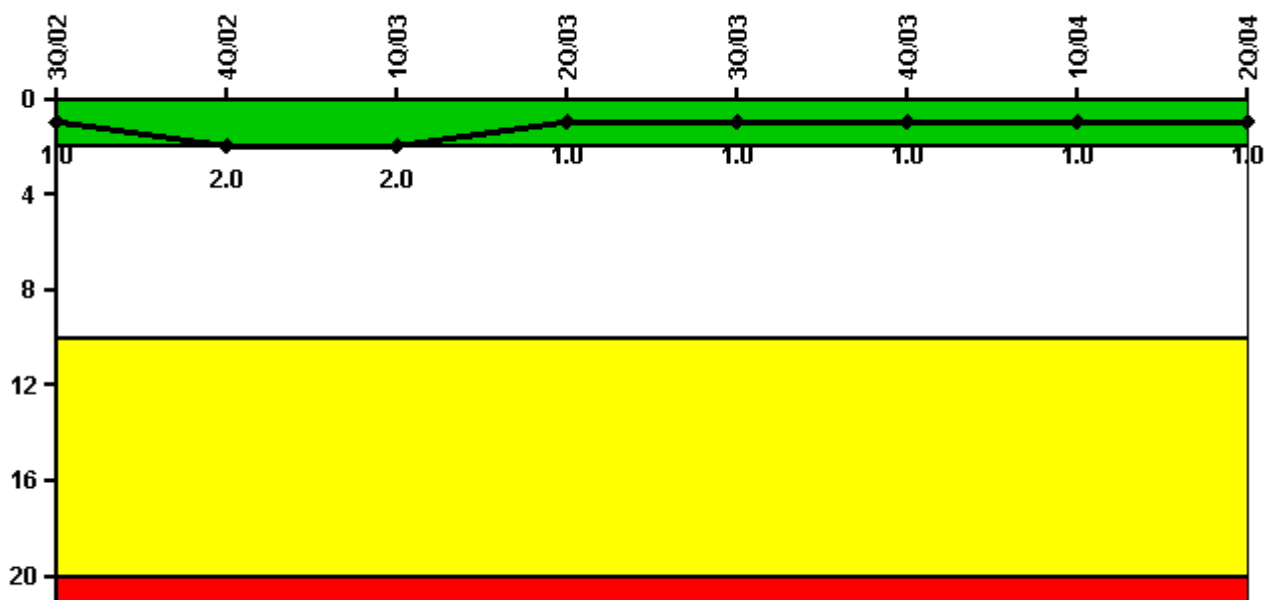
Thresholds: White > 3.0 Yellow > 6.0 Red > 25.0

Notes

Unplanned Scrams per 7000 Critical Hrs	3Q/02	4Q/02	1Q/03	2Q/03	3Q/03	4Q/03	1Q/04	2Q/04
Unplanned scrams	0	1.0	0	0	0	0	0	0
Critical hours	2208.0	2142.1	1782.4	1743.9	2208.0	2209.0	2184.0	2183.0
Indicator value	0	0.8	0.8	0.9	0.9	0	0	0

Licensee Comments: none

Scrams with Loss of Normal Heat Removal



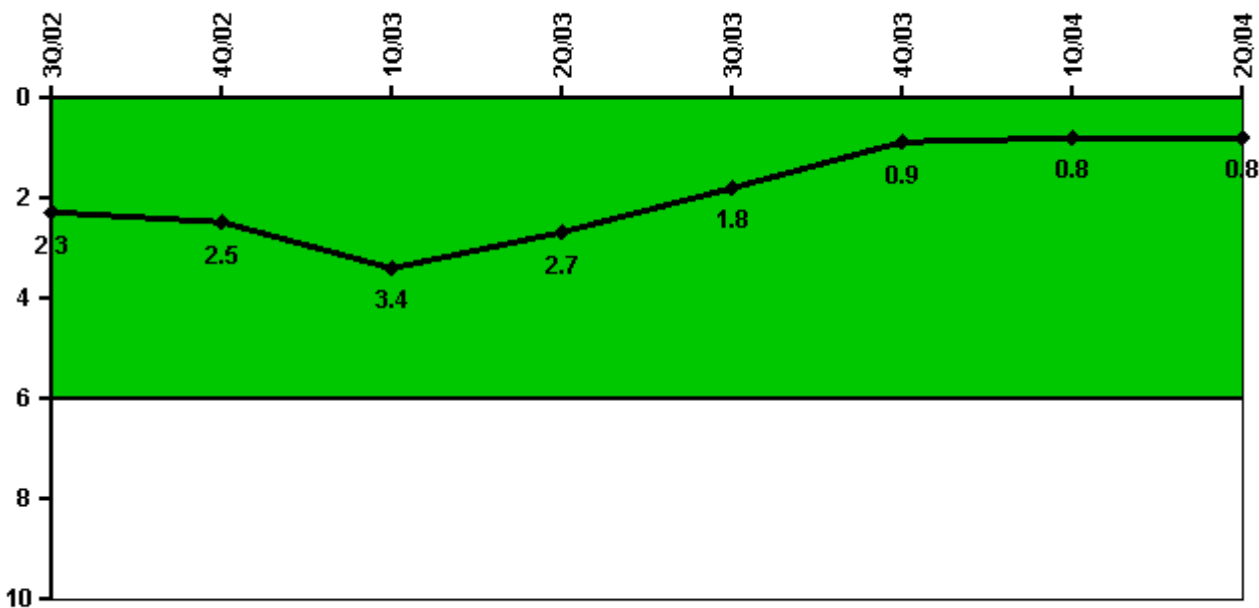
Thresholds: White > 2.0 Yellow > 10.0 Red > 20.0

Notes

Scrams with Loss of Normal Heat Removal	3Q/02	4Q/02	1Q/03	2Q/03	3Q/03	4Q/03	1Q/04	2Q/04
Scrams	0	1.0	0	0	0	0	0	0
Indicator value	1.0	2.0	2.0	1.0	1.0	1.0	1.0	1.0

Licensee Comments: none

Unplanned Power Changes per 7000 Critical Hrs



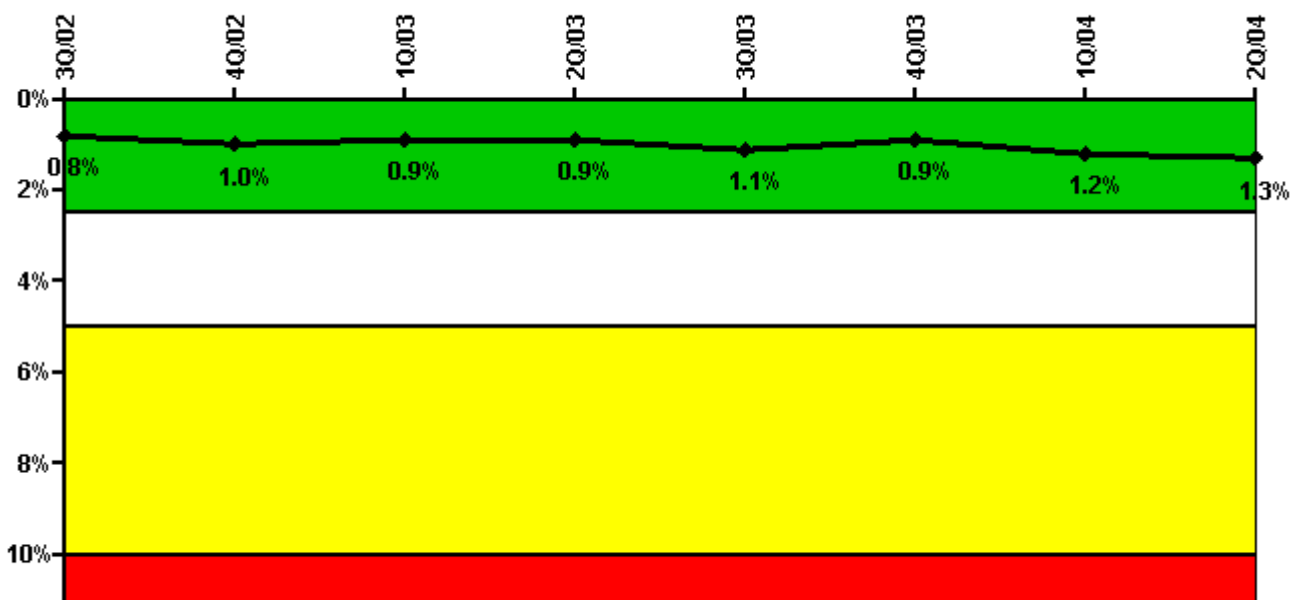
Thresholds: White > 6.0

Notes

Unplanned Power Changes per 7000 Critical Hrs	3Q/02	4Q/02	1Q/03	2Q/03	3Q/03	4Q/03	1Q/04	2Q/04
Unplanned power changes	1.0	1.0	1.0	0	0	0	1.0	0
Critical hours	2208.0	2142.1	1782.4	1743.9	2208.0	2209.0	2184.0	2183.0
Indicator value	2.3	2.5	3.4	2.7	1.8	0.9	0.8	0.8

Licensee Comments: none

Safety System Unavailability, Emergency AC Power



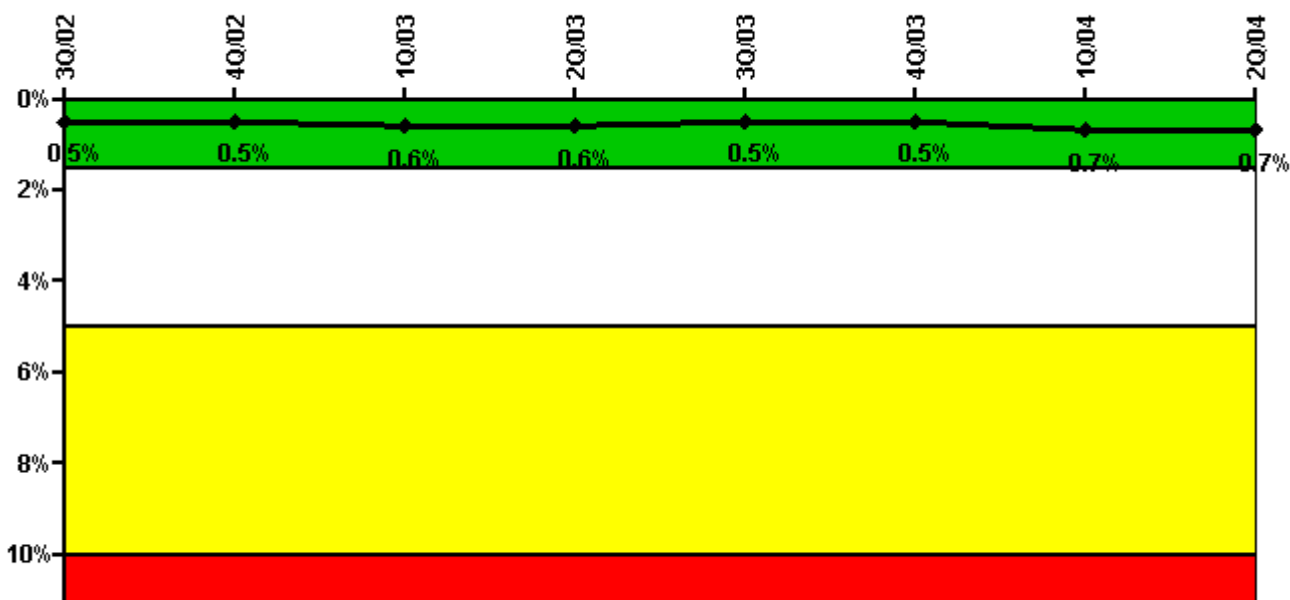
Thresholds: White > 2.5% Yellow > 5.0% Red > 10.0%

Notes

Safety System Unavailability, Emergency AC Power	3Q/02	4Q/02	1Q/03	2Q/03	3Q/03	4Q/03	1Q/04	2Q/04
Train 1								
Planned unavailable hours	3.75	64.58	7.33	12.80	33.60	0.64	104.05	5.11
Unplanned unavailable hours	5.72	5.07	5.57	0	11.20	46.35	0	0
Fault exposure hours	4.57	0	0	0	0	0	0	0
Effective Reset hours	0	0	0	0	0	0	0	0
Required hours	2208.00	2209.00	2160.00	2183.00	2208.00	2209.00	2184.00	2183.00
Train 2								
Planned unavailable hours	3.23	84.63	2.67	17.57	42.75	0.47	0.96	86.40
Unplanned unavailable hours	32.32	0	15.77	0	0	0	48.40	0
Fault exposure hours	0	0	0	0	0	0	0	0
Effective Reset hours	0	0	0	0	0	0	0	0
Required hours	2208.00	2209.00	2160.00	2183.00	2208.00	2209.00	2184.00	2183.00
Indicator value	0.8%	1.0%	0.9%	0.9%	1.1%	0.9%	1.2%	1.3%

Licensee Comments: none

Safety System Unavailability, High Pressure Injection System (HPSI)



Thresholds: White > 1.5% Yellow > 5.0% Red > 10.0%

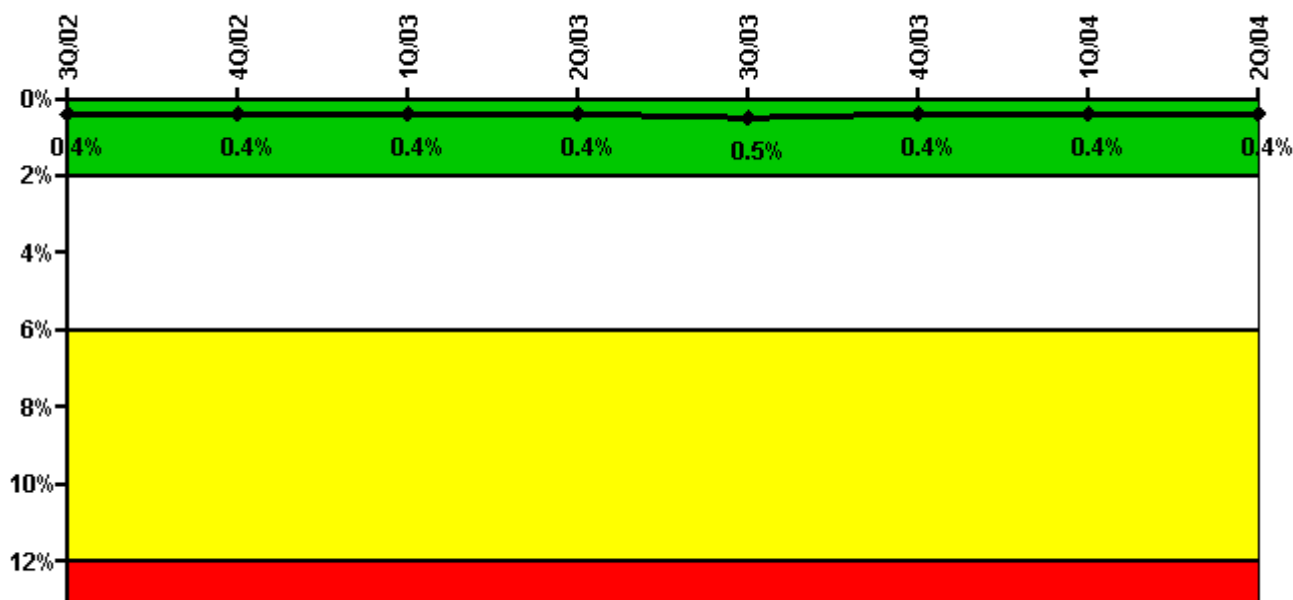
Notes

Safety System Unavailability, High Pressure Injection System (HPSI)	3Q/02	4Q/02	1Q/03	2Q/03	3Q/03	4Q/03	1Q/04	2Q/04
Train 1								
Planned unavailable hours	6.06	0.68	18.96	12.78	0	8.08	46.50	3.86
Unplanned unavailable hours	0	18.22	0	0	0	4.25	0	0
Fault exposure hours	0	0	0	0	0	0	0	0
Effective Reset hours	0	0	0	0	0	0	0	0
Required hours	2208.00	2209.00	1795.10	1777.52	2208.00	2209.00	2184.00	2183.00
Train 2								
Planned unavailable hours	0.37	4.22	6.29	0	2.40	0.47	30.65	7.15
Unplanned unavailable hours	0	0	0	0	43.57	0	0	8.60
Fault exposure hours	0	0	0	0	0	3.95	0	0
Effective Reset hours	0	0	0	0	0	0	0	0
Required hours	2208.00	2209.00	1795.10	1777.52	2208.00	2209.00	2184.00	2183.00
Indicator value	0.5%	0.5%	0.6%	0.6%	0.5%	0.5%	0.7%	0.7%

Licensee Comments:

4Q/03: Fault exposure hours for Train 2, high pressure safety injection pump 1-B, resulted from a failure of a pressure controller, for the nitrogen backup supply, to maintain sufficient pressure for motive force to operate sub cooling valve CV-3070 when the normal instrument air supply was not available.

Safety System Unavailability, Heat Removal System (AFW)



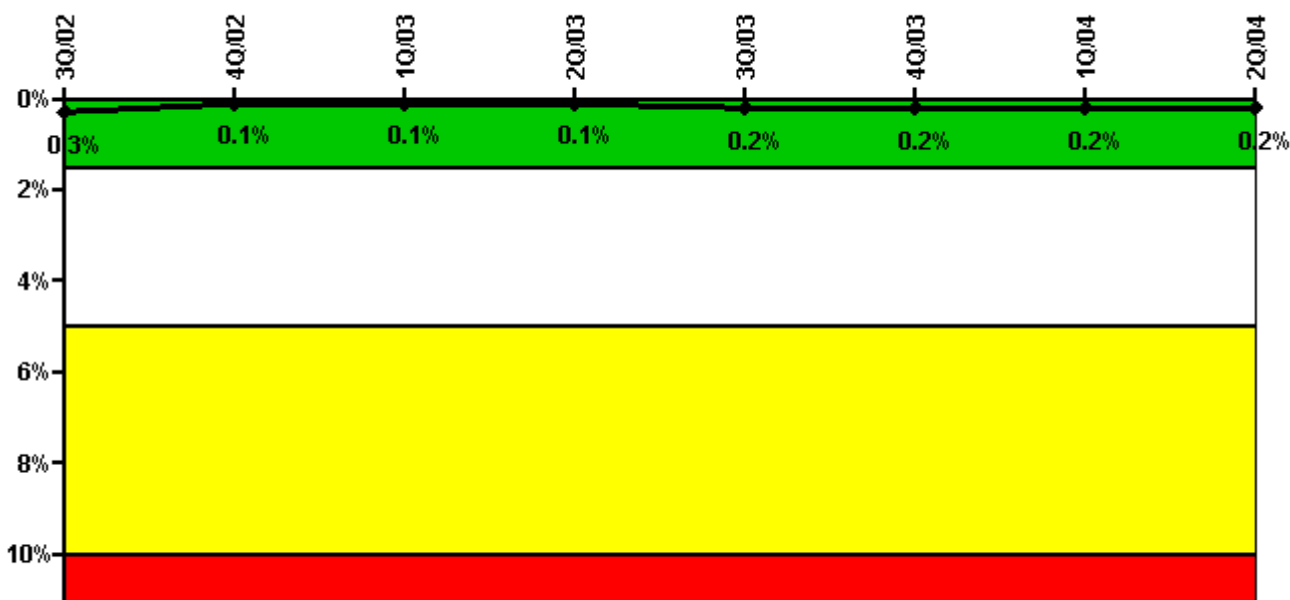
Thresholds: White > 2.0% Yellow > 6.0% Red > 12.0%

Notes

Safety System Unavailability, Heat Removal System (AFW)	3Q/02	4Q/02	1Q/03	2Q/03	3Q/03	4Q/03	1Q/04	2Q/04
Train 1								
Planned unavailable hours	6.18	5.38	1.42	1.27	25.78	2.01	1.64	4.68
Unplanned unavailable hours	0	0	0.32	0	25.37	0	0	0
Fault exposure hours	0	0	0	0	0	0	0	0
Effective Reset hours	0	0	0	0	0	0	0	0
Required hours	2208.00	2209.00	1795.10	1777.52	2208.00	2209.00	2184.00	2183.00
Train 2								
Planned unavailable hours	6.18	2.06	1.88	15.51	18.57	2.05	6.97	5.13
Unplanned unavailable hours	0	0	0.32	0	0	0	0	0
Fault exposure hours	0	0	0	0	0	0	0	0
Effective Reset hours	0	0	0	0	0	0	0	0
Required hours	2208.00	2209.00	1795.10	1777.52	2208.00	2209.00	2184.00	2183.00
Train 3								
Planned unavailable hours	12.72	0.95	10.15	35.80	1.82	15.91	22.02	3.73
Unplanned unavailable hours	0	0	0.18	0	0	0	0	0
Fault exposure hours	0	0	0	0	0	0	0	0
Effective Reset hours	0	0	0	0	0	0	0	0
Required hours	2208.00	2209.00	1795.10	1777.52	2208.00	2209.00	2184.00	2183.00
Indicator value	0.4%	0.4%	0.4%	0.4%	0.5%	0.4%	0.4%	0.4%

Licensee Comments: none

Safety System Unavailability, Residual Heat Removal System

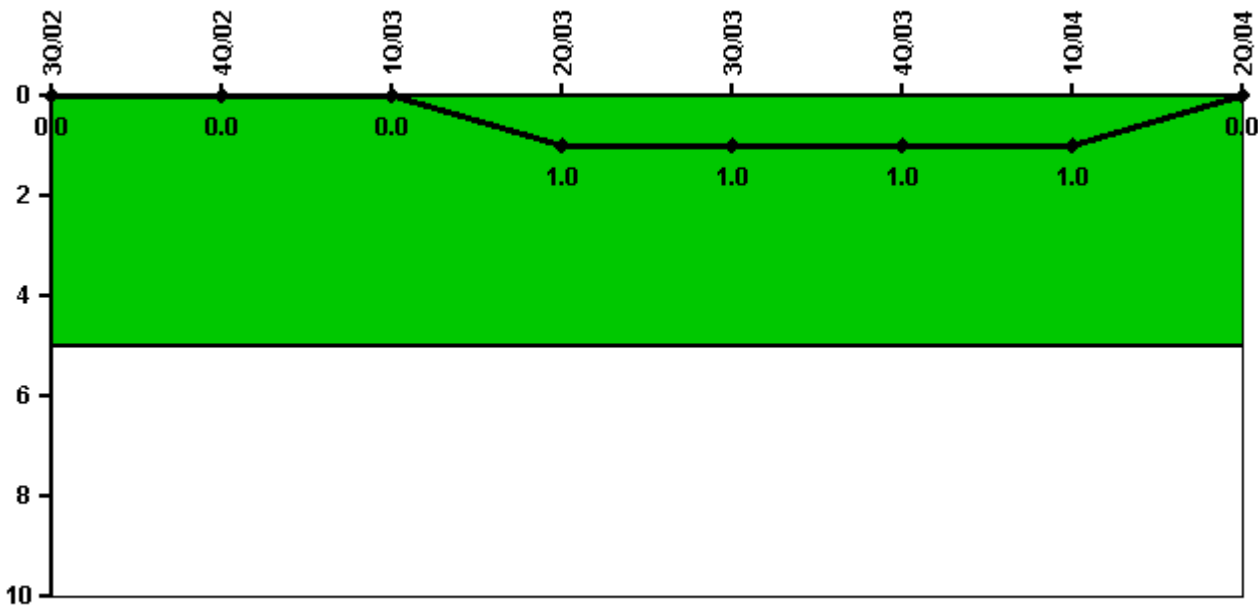


Thresholds: White > 1.5% Yellow > 5.0% Red > 10.0%

Notes

Safety System Unavailability, Residual Heat Removal System	3Q/02	4Q/02	1Q/03	2Q/03	3Q/03	4Q/03	1Q/04	2Q/04
Train 1								
Planned unavailable hours	1.01	8.20	17.59	0.90	62.65	3.65	1.12	4.36
Unplanned unavailable hours	0	0	0	0	0	0	0	0
Fault exposure hours	0	0	0	0	0	0	0	0
Effective Reset hours	0	0	0	0	0	0	0	0
Required hours	2208.00	2209.00	1795.10	1777.52	2208.00	2209.00	2184.00	2183.00
Train 2								
Planned unavailable hours	0	0	3.38	0	0.05	0.47	0	1.30
Unplanned unavailable hours	0	0	0	0	0	0	0	0
Fault exposure hours	0	0	0	0	0	0	0	0
Effective Reset hours	0	0	0	0	0	0	0	0
Required hours	2208.00	2209.00	1795.10	1777.52	2208.00	2209.00	2184.00	2183.00
Train 3								
Planned unavailable hours	0	0	0	0	0	0	0	0
Unplanned unavailable hours	0	0	0.33	0	0	0	0	0
Fault exposure hours	0	0	0	0	0	0	0	0
Effective Reset hours	0	0	0	0	0	0	0	0
Required hours	0	0	364.90	295.68	0	0	0	0
Train 4								
Planned unavailable hours	0	0	9.77	0	0	0	0	0
Unplanned unavailable hours	0	0	0.33	0	0	0	0	0
Fault exposure hours	0	0	0	0	0	0	0	0
Effective Reset hours	0	0	0	0	0	0	0	0
Required hours	0	0	364.90	343.66	0	0	0	0
Indicator value	0.3%	0.1%	0.1%	0.1%	0.2%	0.2%	0.2%	0.2%

Safety System Functional Failures (PWR)



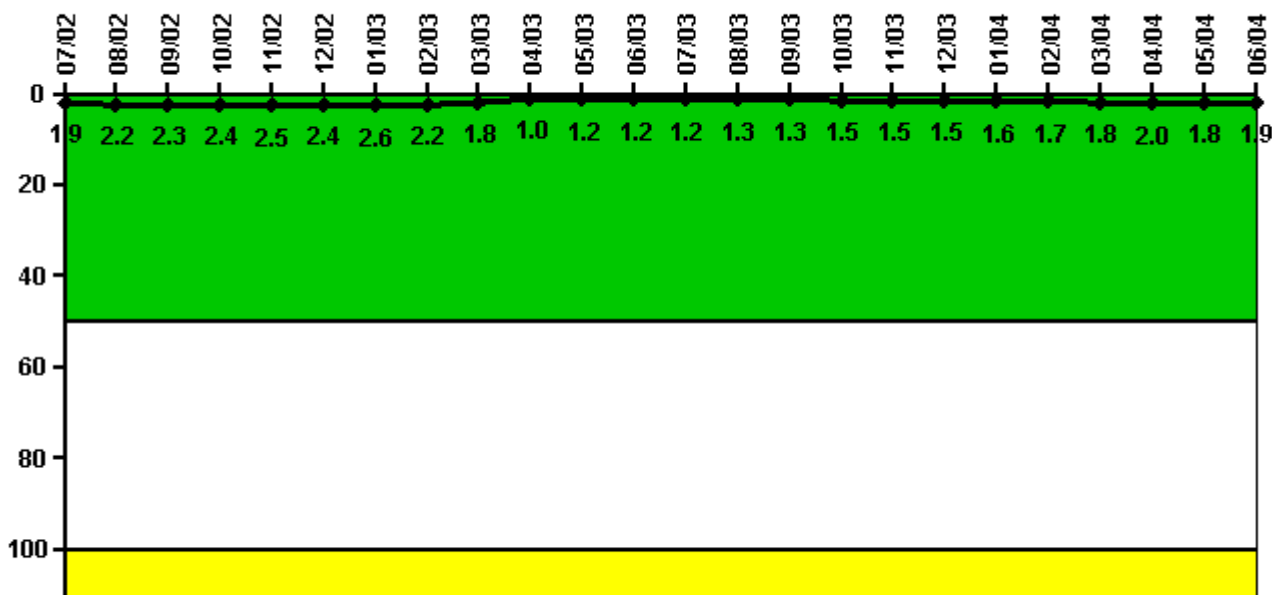
Thresholds: White > 5.0

Notes

Safety System Functional Failures (PWR)	3Q/02	4Q/02	1Q/03	2Q/03	3Q/03	4Q/03	1Q/04	2Q/04
Safety System Functional Failures	0	0	0	1	0	0	0	0
Indicator value	0	0	0	1	1	1	1	0

Licensee Comments: none

Reactor Coolant System Activity



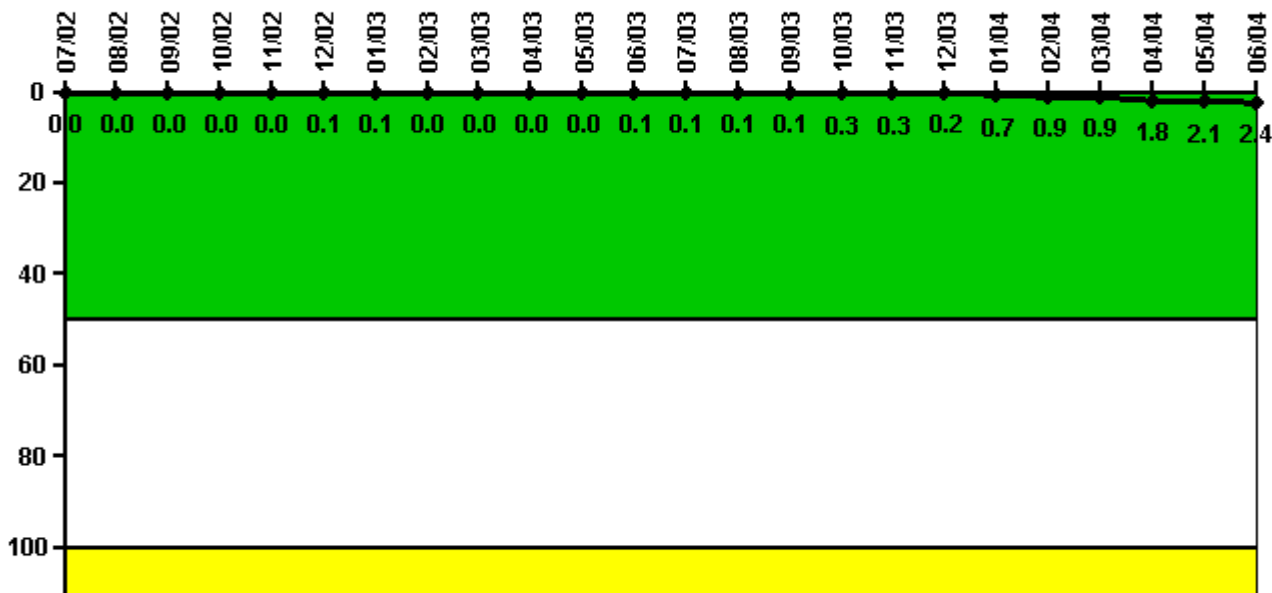
Thresholds: White > 50.0 Yellow > 100.0

Notes

Reactor Coolant System Activity	7/02	8/02	9/02	10/02	11/02	12/02	1/03	2/03	3/03	4/03	5/03	6/03
Maximum activity	0.019300	0.021700	0.022700	0.023500	0.024700	0.024400	0.026000	0.022200	0.017900	0.009580	0.011800	0.011600
Technical specification limit	1.0	1.0	1.0	1.0	1.0	1.0	1.0	1.0	1.0	1.0	1.0	1.0
Indicator value	1.9	2.2	2.3	2.4	2.5	2.4	2.6	2.2	1.8	1.0	1.2	1.2
Reactor Coolant System Activity	7/03	8/03	9/03	10/03	11/03	12/03	1/04	2/04	3/04	4/04	5/04	6/04
Maximum activity	0.012200	0.012800	0.013300	0.014600	0.014900	0.015400	0.016100	0.016600	0.018400	0.019700	0.018400	0.018800
Technical specification limit	1.0	1.0	1.0	1.0	1.0	1.0	1.0	1.0	1.0	1.0	1.0	1.0
Indicator value	1.2	1.3	1.3	1.5	1.5	1.5	1.6	1.7	1.8	2.0	1.8	1.9

Licensee Comments: none

Reactor Coolant System Leakage



Thresholds: White > 50.0 Yellow > 100.0

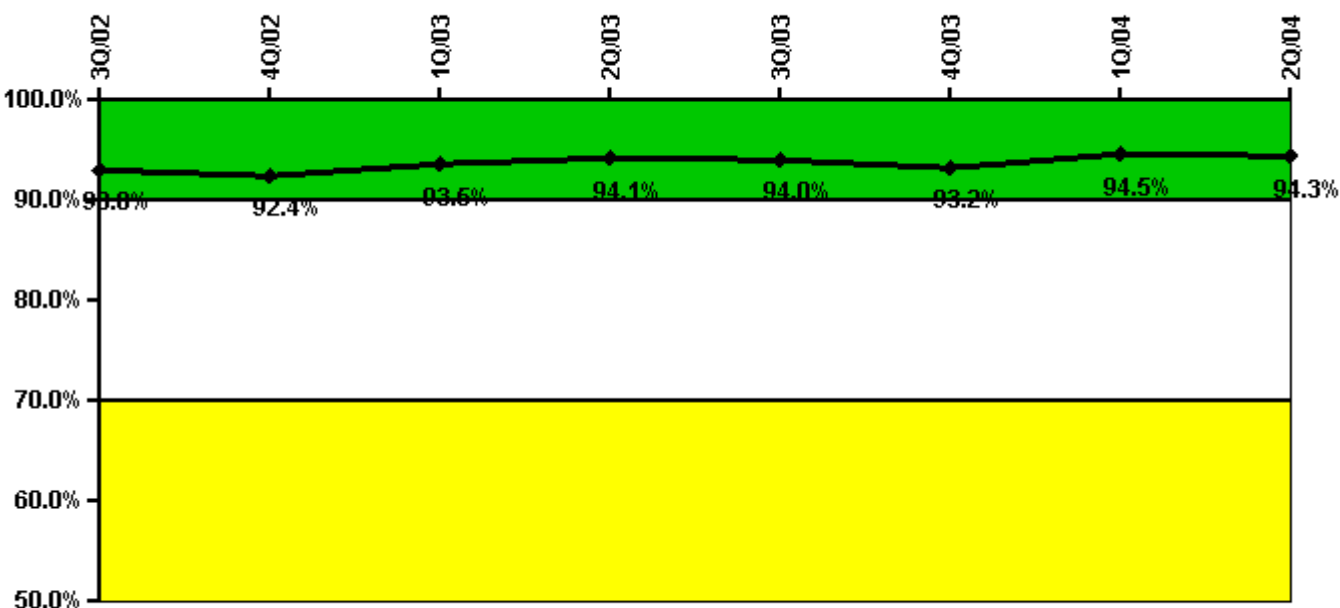
Notes

Reactor Coolant System Leakage	7/02	8/02	9/02	10/02	11/02	12/02	1/03	2/03	3/03	4/03	5/03	6/03
Maximum leakage	0.002	0.002	0.001	0.001	0.001	0.005	0.005	0.001	0.001	0.002	0.002	0.007
Technical specification limit	10.0	10.0	10.0	10.0	10.0	10.0	10.0	10.0	10.0	10.0	10.0	10.0
Indicator value	0	0	0	0	0	0.1	0.1	0	0	0	0	0.1

Reactor Coolant System Leakage	7/03	8/03	9/03	10/03	11/03	12/03	1/04	2/04	3/04	4/04	5/04	6/04
Maximum leakage	0.013	0.013	0.011	0.029	0.026	0.018	0.073	0.085	0.094	0.180	0.209	0.240
Technical specification limit	10.0	10.0	10.0	10.0	10.0	10.0	10.0	10.0	10.0	10.0	10.0	10.0
Indicator value	0.1	0.1	0.1	0.3	0.3	0.2	0.7	0.9	0.9	1.8	2.1	2.4

Licensee Comments: none

Drill/Exercise Performance



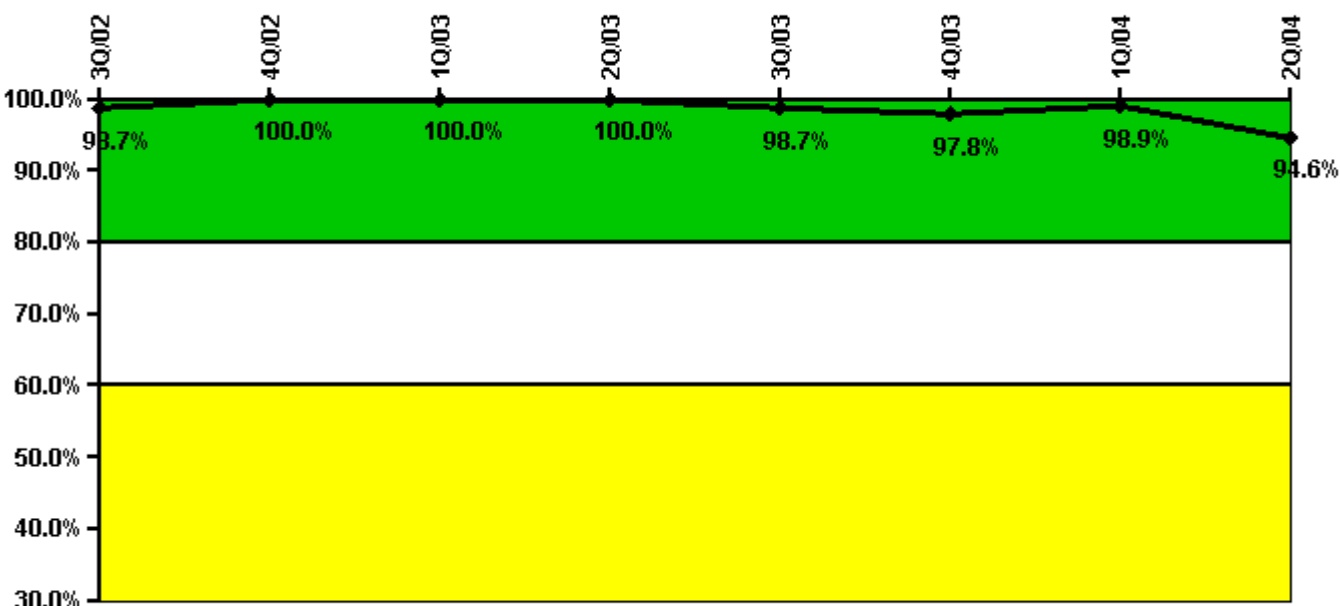
Thresholds: White < 90.0% Yellow < 70.0%

Notes

Drill/Exercise Performance	3Q/02	4Q/02	1Q/03	2Q/03	3Q/03	4Q/03	1Q/04	2Q/04
Successful opportunities	11.0	24.0	38.0	18.0	45.0	28.0	23.0	27.0
Total opportunities	11.0	26.0	39.0	18.0	48.0	32.0	25.0	28.0
Indicator value	93.0%	92.4%	93.5%	94.1%	94.0%	93.2%	94.5%	91.3%

Licensee Comments: none

ERO Drill Participation



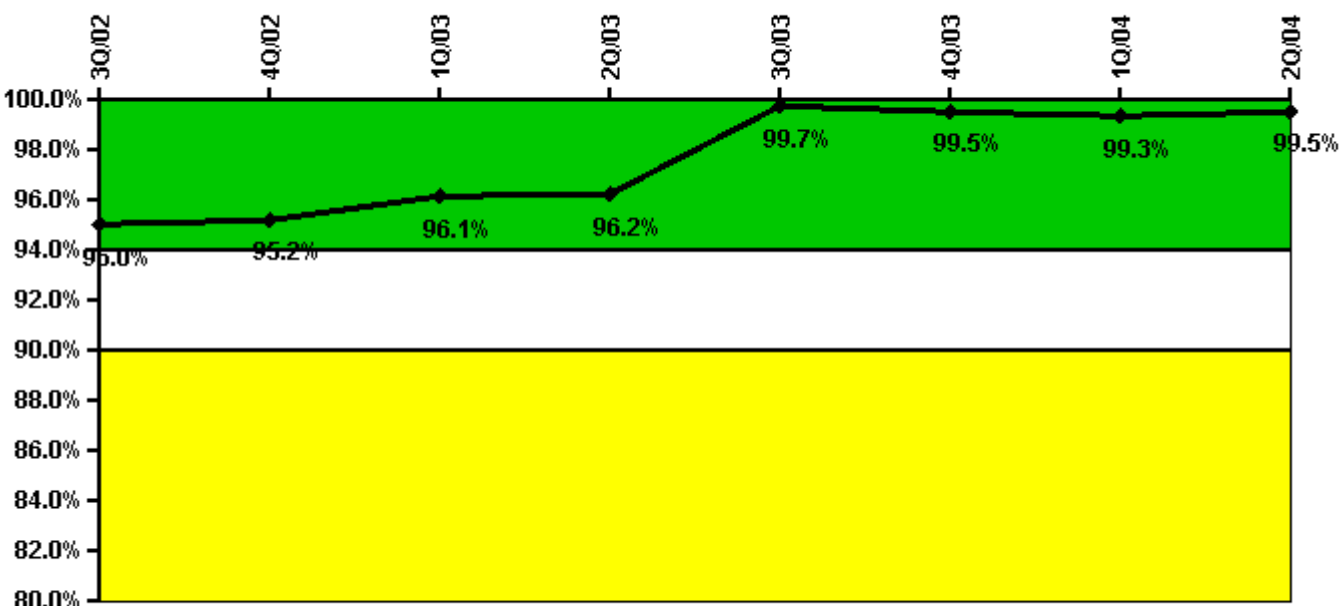
Thresholds: White < 80.0% Yellow < 60.0%

Notes

ERO Drill Participation	3Q/02	4Q/02	1Q/03	2Q/03	3Q/03	4Q/03	1Q/04	2Q/04
Participating Key personnel	74.0	76.0	75.0	72.0	74.0	90.0	86.0	87.0
Total Key personnel	75.0	76.0	75.0	72.0	75.0	92.0	87.0	92.0
Indicator value	98.7%	100.0%	100.0%	100.0%	98.7%	97.8%	98.9%	94.6%

Licensee Comments: none

Alert & Notification System



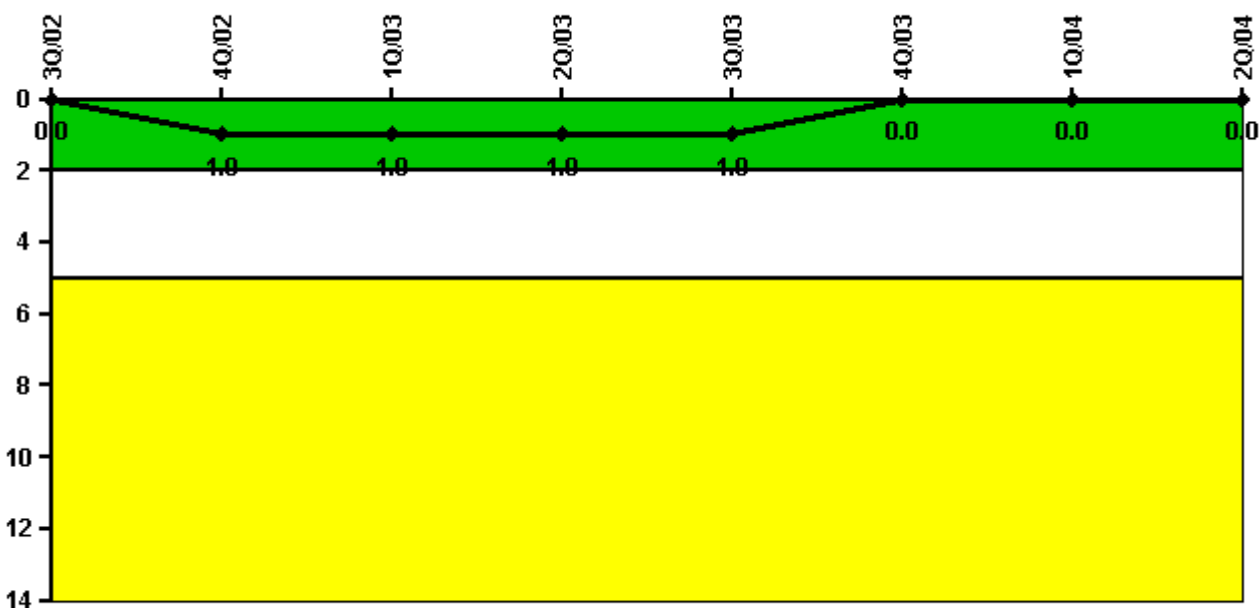
Thresholds: White < 94.0% Yellow < 90.0%

Notes

Alert & Notification System	3Q/02	4Q/02	1Q/03	2Q/03	3Q/03	4Q/03	1Q/04	2Q/04
Successful siren-tests	210	252	486	182	183	181	181	183
Total sirens-tests	252	252	488	183	183	183	183	183
Indicator value	95.0%	95.2%	96.1%	96.2%	99.7%	99.5%	99.3%	99.5%

Licensee Comments: none

Occupational Exposure Control Effectiveness



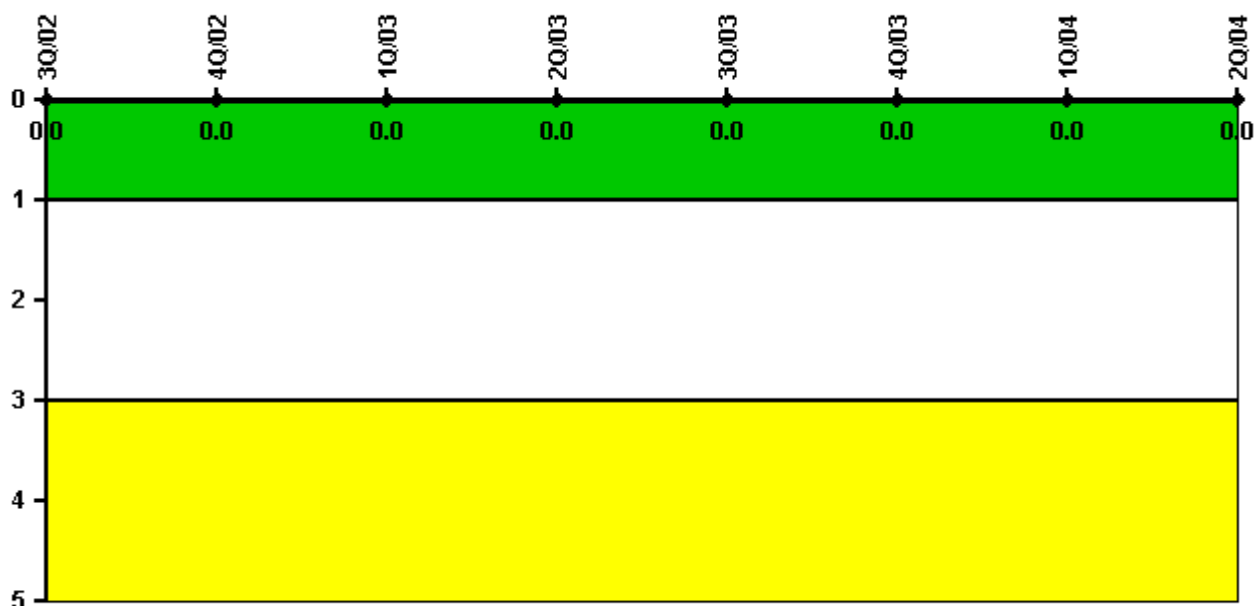
Thresholds: White > 2.0 Yellow > 5.0

Notes

Occupational Exposure Control Effectiveness	3Q/02	4Q/02	1Q/03	2Q/03	3Q/03	4Q/03	1Q/04	2Q/04
High radiation area occurrences	0	0	0	0	0	0	0	0
Very high radiation area occurrences	0	0	0	0	0	0	0	0
Unintended exposure occurrences	0	1	0	0	0	0	0	0
Indicator value	0	1	1	1	1	0	0	0

Licensee Comments: none

RETS/ODCM Radiological Effluent



Thresholds: White > 1.0 Yellow > 3.0

Notes

RETS/ODCM Radiological Effluent	3Q/02	4Q/02	1Q/03	2Q/03	3Q/03	4Q/03	1Q/04	2Q/04
RETS/ODCM occurrences	0	0	0	0	0	0	0	0
Indicator value	0	0	0	0	0	0	0	0

Licensee Comments: none

[Physical Protection](#) information not publicly available.

▲ [Action Matrix Summary](#) | [Inspection Findings Summary](#) | [PI Summary](#) | [Reactor Oversight Process](#)

Last Modified: September 8, 2004