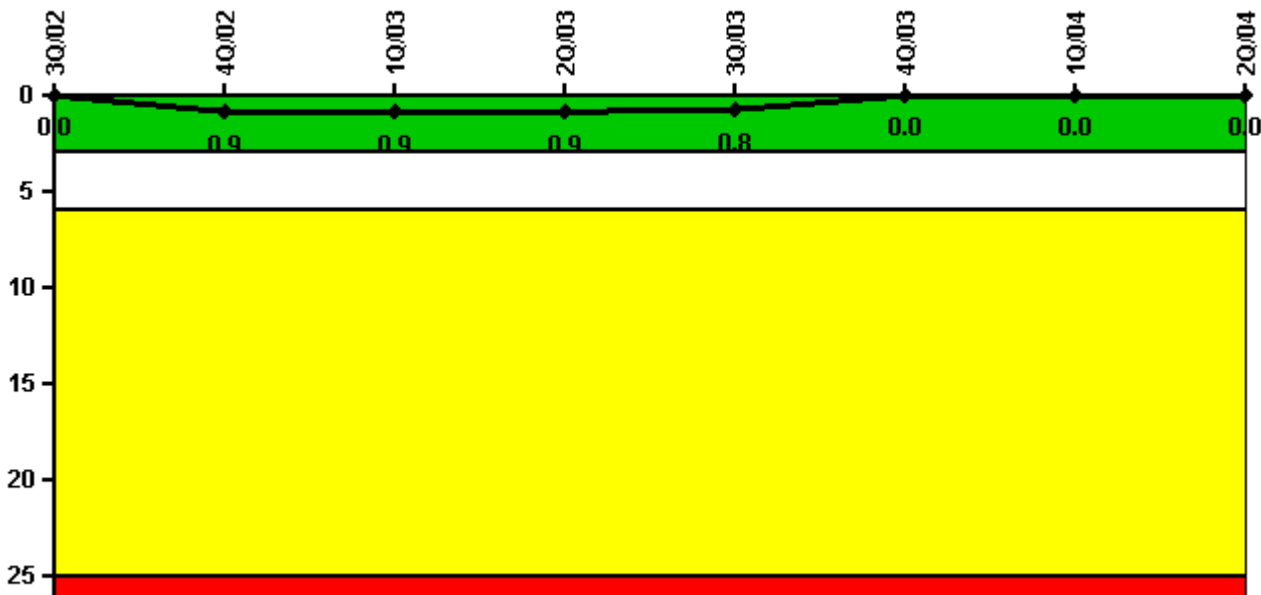


### Millstone 3

#### 2Q/2004 Performance Indicators

Licensee's General Comments: none

#### Unplanned Scrams per 7000 Critical Hrs



Thresholds: White > 3.0 Yellow > 6.0 Red > 25.0

#### Notes

Unplanned Scrams per 7000 Critical Hrs	3Q/02	4Q/02	1Q/03	2Q/03	3Q/03	4Q/03	1Q/04	2Q/04
Unplanned scrams	0	1.0	0	0	0	0	0	0
Critical hours	1637.9	1964.7	2160.0	2183.0	2208.0	2209.0	2184.0	1379.9
Indicator value	0	0.9	0.9	0.9	0.8	0	0	0

Licensee Comments: none

### Scrams with Loss of Normal Heat Removal



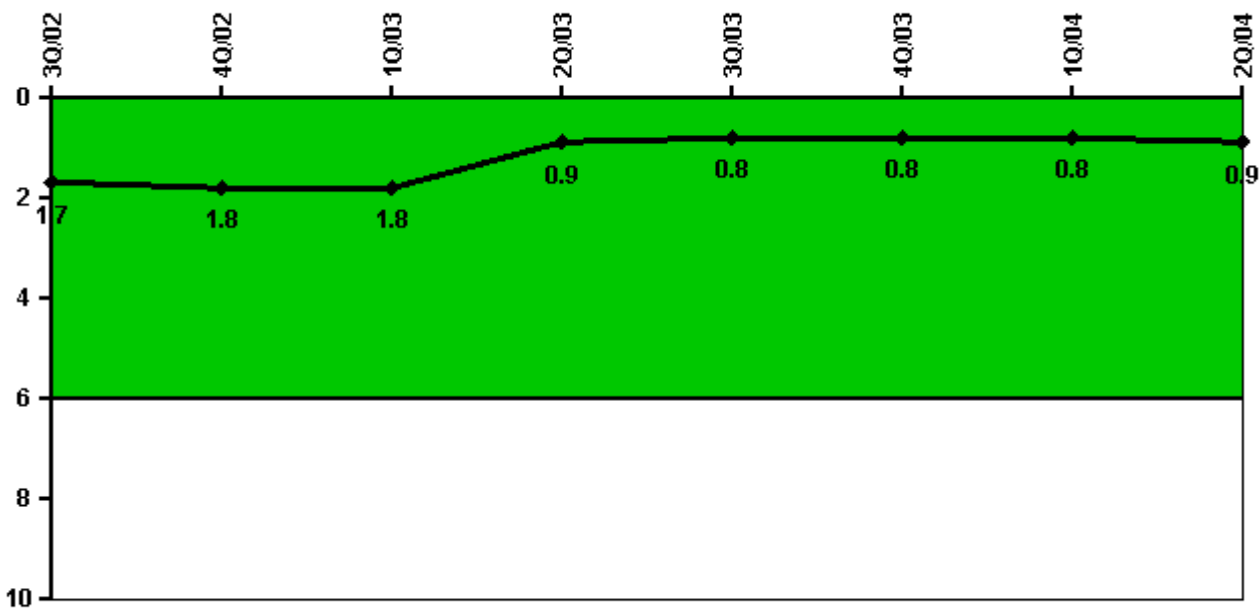
Thresholds: White > 2.0 Yellow > 10.0 Red > 20.0

#### Notes

Scrams with Loss of Normal Heat Removal	3Q/02	4Q/02	1Q/03	2Q/03	3Q/03	4Q/03	1Q/04	2Q/04
Scrams	0	0	0	0	0	0	0	0
Indicator value	0	0	0	0	0	0	0	0

Licensee Comments: none

### Unplanned Power Changes per 7000 Critical Hrs



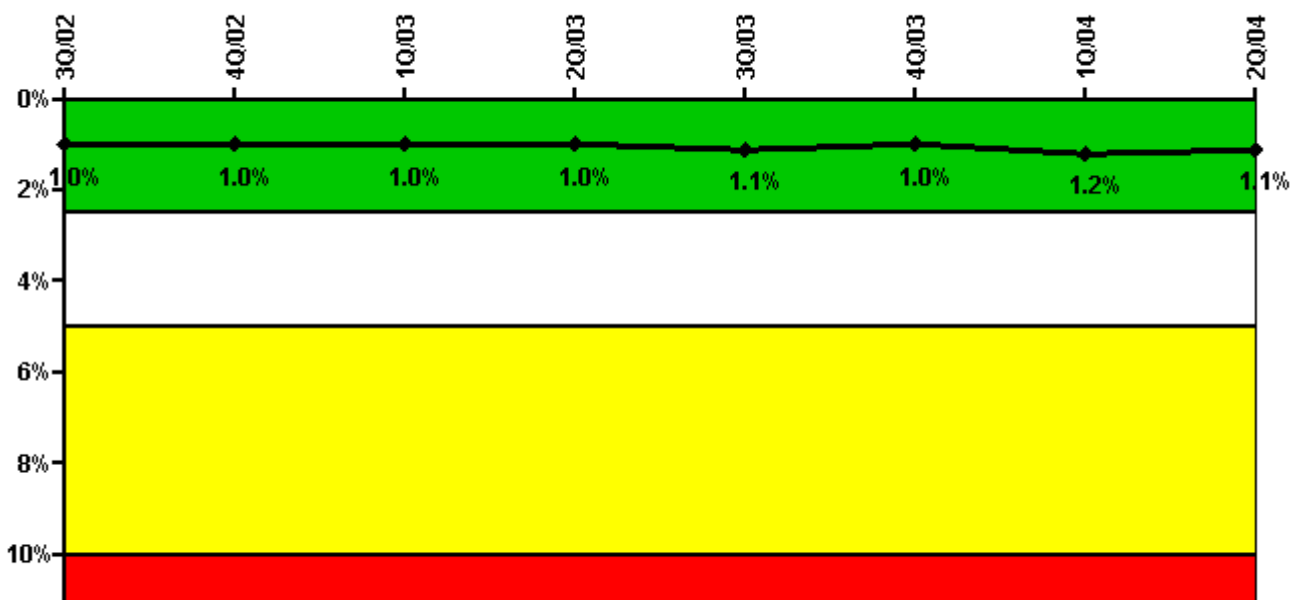
Thresholds: White > 6.0

#### Notes

Unplanned Power Changes per 7000 Critical Hrs	3Q/02	4Q/02	1Q/03	2Q/03	3Q/03	4Q/03	1Q/04	2Q/04
Unplanned power changes	0	1.0	0	0	0	1.0	0	0
Critical hours	1637.9	1964.7	2160.0	2183.0	2208.0	2209.0	2184.0	1379.9
Indicator value	1.7	1.8	1.8	0.9	0.8	0.8	0.8	0.9

Licensee Comments: none

### Safety System Unavailability, Emergency AC Power



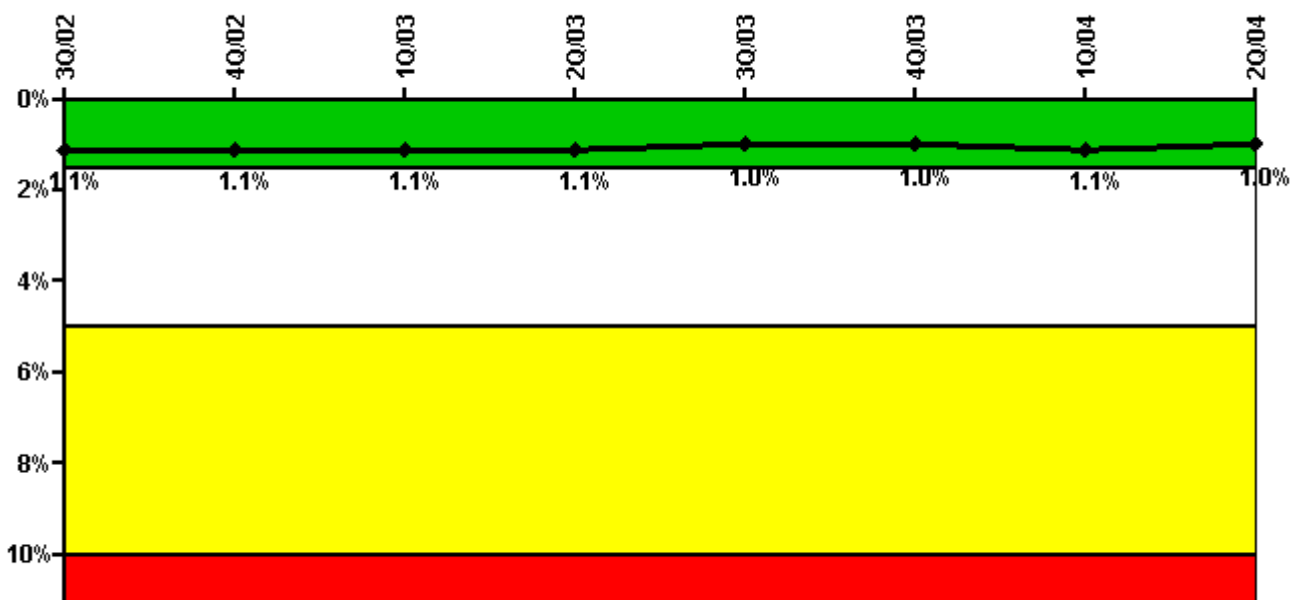
Thresholds: White > 2.5% Yellow > 5.0% Red > 10.0%

#### Notes

Safety System Unavailability, Emergency AC Power	3Q/02	4Q/02	1Q/03	2Q/03	3Q/03	4Q/03	1Q/04	2Q/04
<b>Train 1</b>								
Planned unavailable hours	13.95	18.43	19.08	1.78	24.83	17.12	18.31	11.13
Unplanned unavailable hours	0	12.20	0	23.01	0	0.92	0	0
Fault exposure hours	0	0	0	0	0	0	0	0
Effective Reset hours	0	0	0	0	0	0	0	0
Required hours	1758.85	2209.00	2160.00	2183.00	2208.00	2209.00	2184.00	2052.00
<b>Train 2</b>								
Planned unavailable hours	16.48	20.13	27.95	0	18.95	24.20	30.70	11.38
Unplanned unavailable hours	0	0	0	69.27	0	4.68	55.25	0
Fault exposure hours	0	0	0	0	0	0	0	0
Effective Reset hours	0	0	0	0	0	0	0	0
Required hours	1937.15	2209.00	2160.00	2183.00	2208.00	2209.00	2184.00	2183.00
<b>Indicator value</b>	<b>1.0%</b>	<b>1.0%</b>	<b>1.0%</b>	<b>1.0%</b>	<b>1.1%</b>	<b>1.0%</b>	<b>1.2%</b>	<b>1.1%</b>

Licensee Comments: none

### Safety System Unavailability, High Pressure Injection System (HPSI)

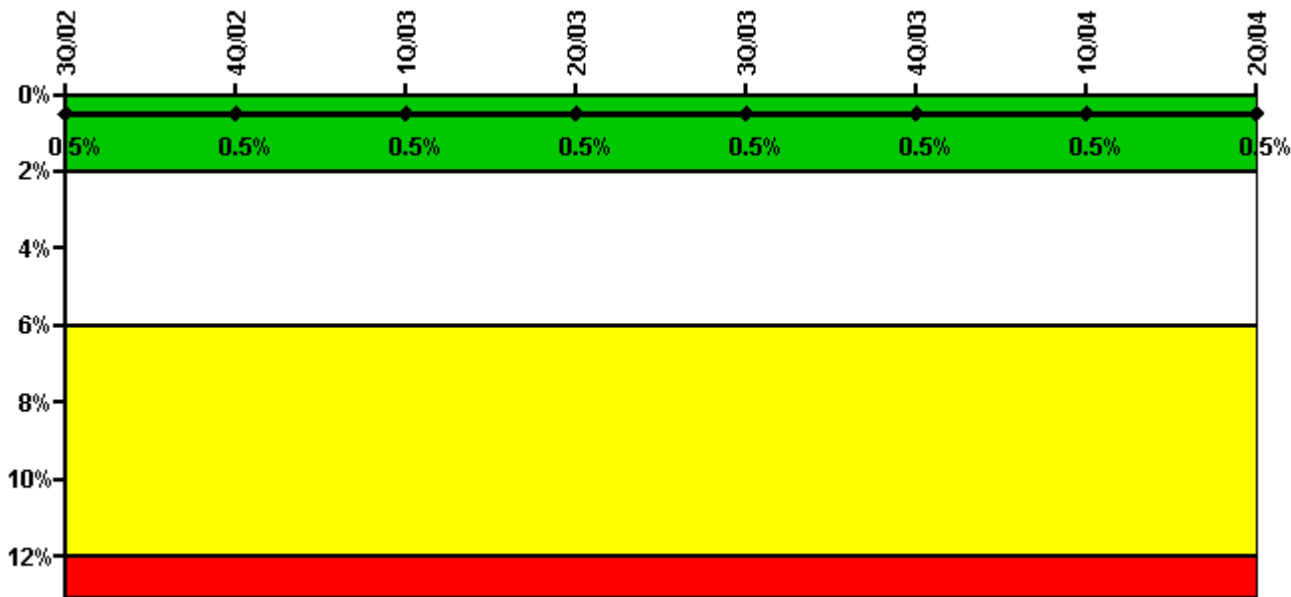


Thresholds: White > 1.5% Yellow > 5.0% Red > 10.0%

#### Notes

Safety System Unavailability, High Pressure Injection System (HPSI)	3Q/02	4Q/02	1Q/03	2Q/03	3Q/03	4Q/03	1Q/04	2Q/04
<b>Train 1</b>								
Planned unavailable hours	3.03	26.02	11.88	15.62	10.02	11.82	19.70	3.48
Unplanned unavailable hours	0.03	0	0	0	0	0	0	0
Fault exposure hours	0	0	0	0	0	0	0	0
Effective Reset hours	0	0	0	0	0	0	0	0
Required hours	1651.73	2181.17	2160.00	2183.00	2208.00	2209.00	2184.00	1483.35
<b>Train 2</b>								
Planned unavailable hours	21.95	16.77	12.62	14.50	16.43	15.18	21.52	18.81
Unplanned unavailable hours	7.30	0	0	0	8.07	0	53.50	0
Fault exposure hours	0	0	0	0	0	0	0	0
Effective Reset hours	0	0	0	0	0	0	0	0
Required hours	1651.73	2181.17	2160.00	2183.00	2208.00	2209.00	2184.00	1483.35
<b>Train 3</b>								
Planned unavailable hours	10.60	23.31	16.05	28.87	6.27	28.68	9.68	14.53
Unplanned unavailable hours	0	0	0	0	0	16.90	0	0
Fault exposure hours	0	0	0	0	0	0	0	0
Effective Reset hours	0	0	0	0	0	0	0	0
Required hours	1651.73	2181.17	2160.00	2183.00	2208.00	2209.00	1488.00	1483.35
<b>Train 4</b>								
Planned unavailable hours	11.87	3.97	18.13	2.55	20.52	19.14	5.55	19.13
Unplanned unavailable hours	0	0	0	0	0	0	0	0
Fault exposure hours	0	0	0	0	0	0	0	0
Effective Reset hours	0	0	0	0	0	0	0	0
Required hours	1651.73	2181.17	2160.00	2183.00	2208.00	2209.00	1488.00	1483.35
<b>Indicator value</b>	<b>1.1%</b>	<b>1.1%</b>	<b>1.1%</b>	<b>1.1%</b>	<b>1.0%</b>	<b>1.0%</b>	<b>1.1%</b>	<b>1.0%</b>

### Safety System Unavailability, Heat Removal System (AFW)



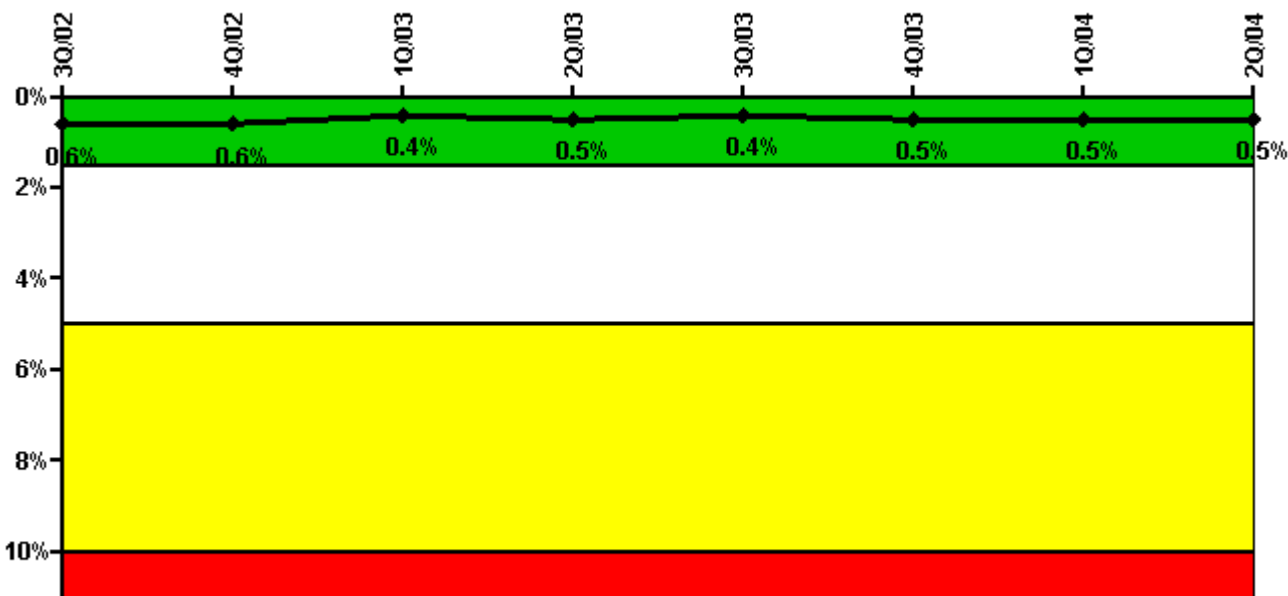
Thresholds: White > 2.0% Yellow > 6.0% Red > 12.0%

#### Notes

Safety System Unavailability, Heat Removal System (AFW)	3Q/02	4Q/02	1Q/03	2Q/03	3Q/03	4Q/03	1Q/04	2Q/04
<b>Train 1</b>								
Planned unavailable hours	3.62	22.10	2.18	14.73	7.40	14.05	2.50	0.71
Unplanned unavailable hours	0	0	0	0	0	0	0	0
Fault exposure hours	0	0	0	0	0	0	0	0
Effective Reset hours	0	0	0	0	0	0	0	0
Required hours	1636.00	2173.17	2160.00	2183.00	744.00	2209.00	2184.00	1453.00
<b>Train 2</b>								
Planned unavailable hours	2.20	11.53	10.78	16.16	2.19	2.85	2.29	12.84
Unplanned unavailable hours	0	0	0	0	0	0	0	0
Fault exposure hours	0	0	0	0	0	0	0	0
Effective Reset hours	0	0	0	0	0	0	0	0
Required hours	1636.00	2173.17	2160.00	2183.00	2208.00	2209.00	2184.00	1453.00
<b>Train 3</b>								
Planned unavailable hours	13.87	4.54	10.90	25.03	9.01	12.88	20.10	4.73
Unplanned unavailable hours	0	1.85	0	0	0	0	0	33.01
Fault exposure hours	0	0	0	0	0	0	0	0
Effective Reset hours	0	0	0	0	0	0	0	0
Required hours	1636.00	2173.17	2160.00	2183.00	2208.00	2209.00	2184.00	1453.00
<b>Indicator value</b>	<b>0.5%</b>	<b>0.5%</b>	<b>0.5%</b>	<b>0.5%</b>	<b>0.5%</b>	<b>0.5%</b>	<b>0.5%</b>	<b>0.5%</b>

Licensee Comments: none

### Safety System Unavailability, Residual Heat Removal System



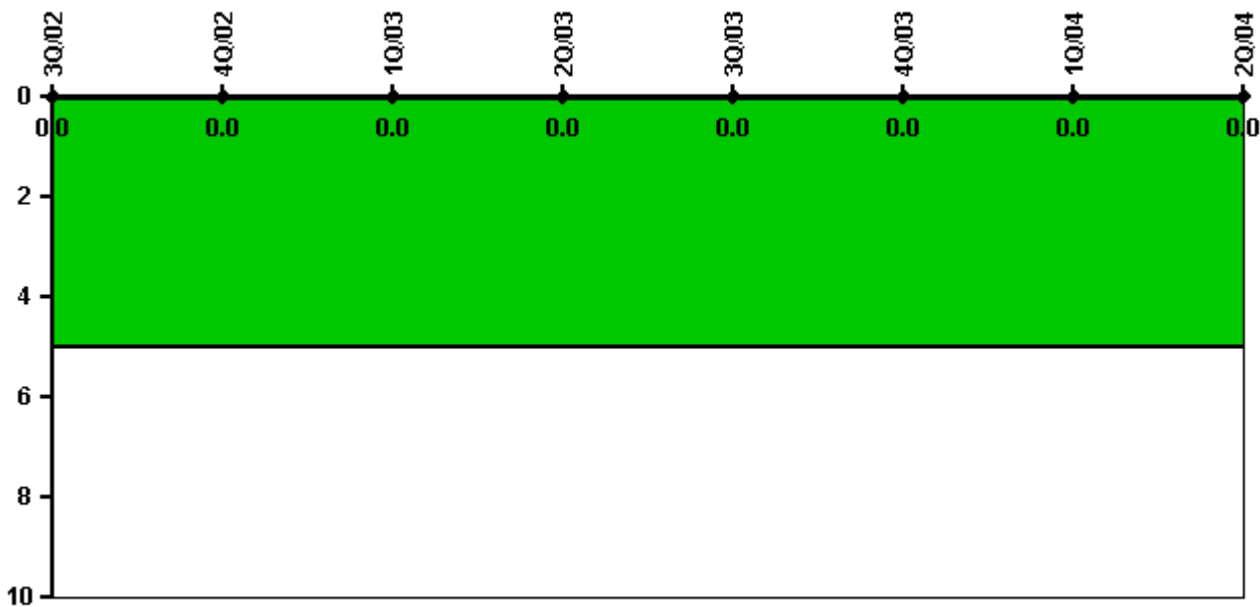
Thresholds: White > 1.5% Yellow > 5.0% Red > 10.0%

#### Notes

Safety System Unavailability, Residual Heat Removal System	3Q/02	4Q/02	1Q/03	2Q/03	3Q/03	4Q/03	1Q/04	2Q/04
<b>Train 1</b>								
Planned unavailable hours	0	0	0	0	0	0	0	0
Unplanned unavailable hours	0	0	0	0	0	0	0	0
Fault exposure hours	0	0	0	0	0	0	0	0
Effective Reset hours	0	0	0	0	0	0	0	0
Required hours	473.71	0	0	0	0	0	0	559.00
<b>Train 2</b>								
Planned unavailable hours	0	0	0	0	0	0	0	0
Unplanned unavailable hours	0	0	0	0	0	0	0	0
Fault exposure hours	0	0	0	0	0	0	0	0
Effective Reset hours	0	0	0	0	0	0	0	0
Required hours	473.71	0	0	0	0	0	0	559.00
<b>Train 3</b>								
Planned unavailable hours	12.75	7.02	60.30	22.65	18.57	7.93	10.64	1.87
Unplanned unavailable hours	0	0	0	0	0	14.67	0	15.48
Fault exposure hours	0	0	0	0	0	0	0	0
Effective Reset hours	0	0	0	0	0	0	0	0
Required hours	1660.11	2181.17	2160.00	2183.00	2208.00	2209.00	2184.00	1483.35
<b>Train 4</b>								
Planned unavailable hours	20.93	23.29	14.34	13.30	6.60	6.10	10.05	3.50
Unplanned unavailable hours	0	37.17	0	0	0	0	53.70	0
Fault exposure hours	0	0	0	0	0	0	0	0
Effective Reset hours	0	0	0	0	0	0	0	0
Required hours	1660.11	2181.17	2160.00	2183.00	2208.00	2209.00	2184.00	1483.35
<b>Indicator value</b>	<b>0.6%</b>	<b>0.6%</b>	<b>0.4%</b>	<b>0.5%</b>	<b>0.4%</b>	<b>0.5%</b>	<b>0.5%</b>	<b>0.5%</b>

Licensee Comments: none

### Safety System Functional Failures (PWR)



Thresholds: White > 5.0

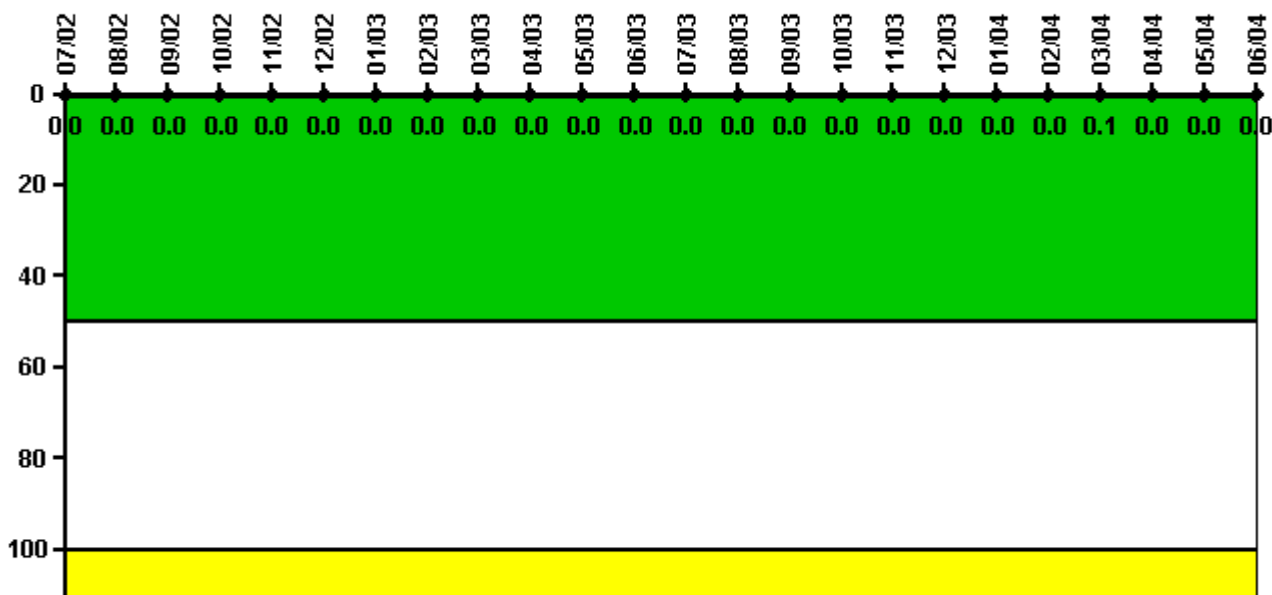
#### Notes

Safety System Functional Failures (PWR)	3Q/02	4Q/02	1Q/03	2Q/03	3Q/03	4Q/03	1Q/04	2Q/04
Safety System Functional Failures	0	0	0	0	0	0	0	0
Indicator value	0	0	0	0	0	0	0	0

Licensee Comments: none



### Reactor Coolant System Activity



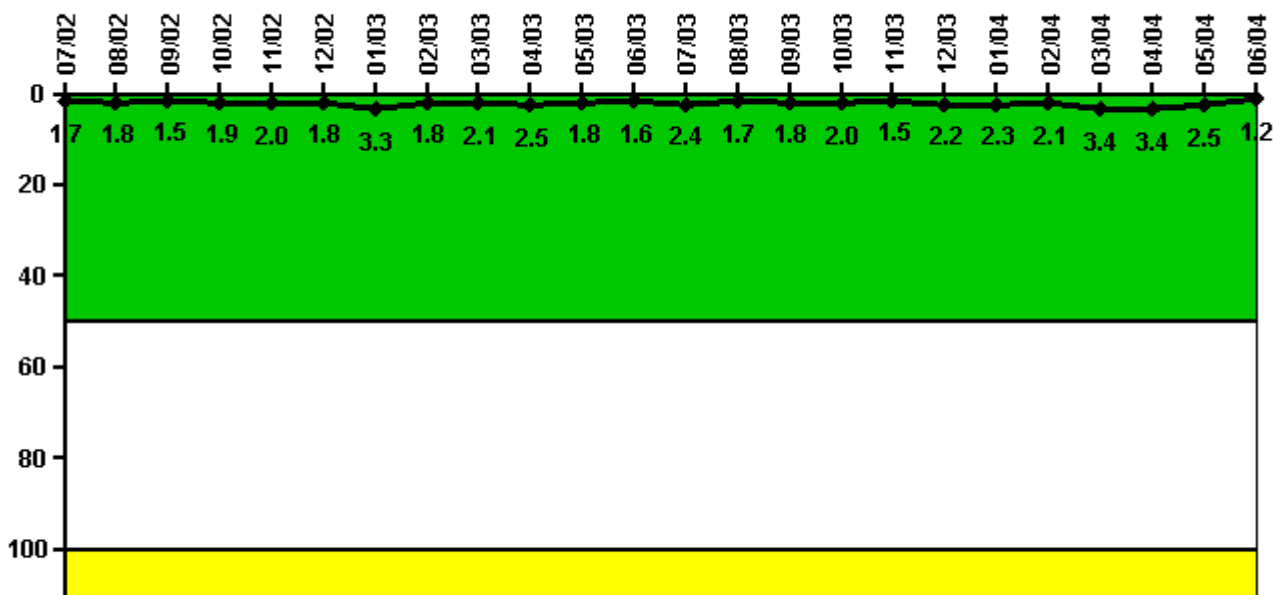
Thresholds: White > 50.0 Yellow > 100.0

#### Notes

Reactor Coolant System Activity	7/02	8/02	9/02	10/02	11/02	12/02	1/03	2/03	3/03	4/03	5/03	6/03
Maximum activity	0.000369	0.000387	0.000324	0.000150	0.000192	0.000174	0.000202	0.000193	0.000214	0.000217	0.000224	0.000259
Technical specification limit	1.0	1.0	1.0	1.0	1.0	1.0	1.0	1.0	1.0	1.0	1.0	1.0
Indicator value	0	0	0	0	0	0	0	0	0	0	0	0
Reactor Coolant System Activity	7/03	8/03	9/03	10/03	11/03	12/03	1/04	2/04	3/04	4/04	5/04	6/04
Maximum activity	0.000267	0.000259	0.000247	0.000256	0.000271	0.000290	0.000284	0.000295	0.000899	0.000196	0.000095	0.000160
Technical specification limit	1.0	1.0	1.0	1.0	1.0	1.0	1.0	1.0	1.0	1.0	1.0	1.0
Indicator value	0	0	0	0	0	0	0	0	0.1	0	0	0

Licensee Comments: none

### Reactor Coolant System Leakage



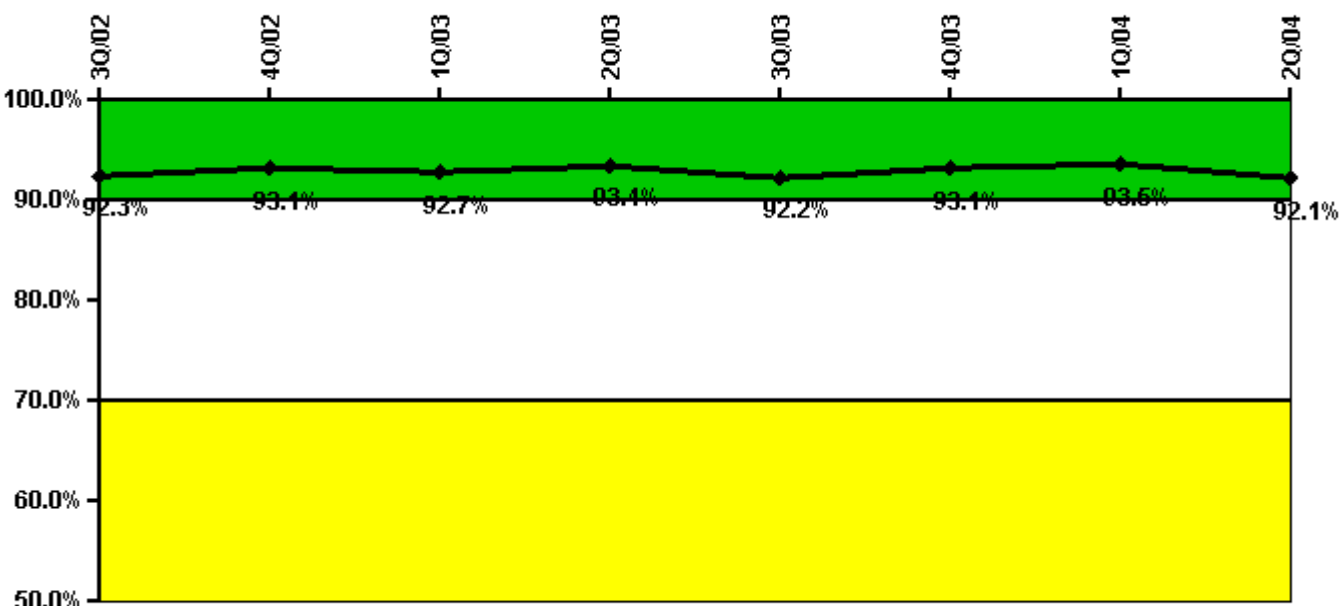
Thresholds: White > 50.0 Yellow > 100.0

#### Notes

Reactor Coolant System Leakage	7/02	8/02	9/02	10/02	11/02	12/02	1/03	2/03	3/03	4/03	5/03	6/03
Maximum leakage	0.170	0.184	0.153	0.193	0.197	0.184	0.326	0.179	0.214	0.252	0.180	0.160
Technical specification limit	10.0	10.0	10.0	10.0	10.0	10.0	10.0	10.0	10.0	10.0	10.0	10.0
Indicator value	1.7	1.8	1.5	1.9	2.0	1.8	3.3	1.8	2.1	2.5	1.8	1.6
Reactor Coolant System Leakage	7/03	8/03	9/03	10/03	11/03	12/03	1/04	2/04	3/04	4/04	5/04	6/04
Maximum leakage	0.240	0.171	0.182	0.197	0.154	0.221	0.234	0.209	0.339	0.344	0.250	0.121
Technical specification limit	10.0	10.0	10.0	10.0	10.0	10.0	10.0	10.0	10.0	10.0	10.0	10.0
Indicator value	2.4	1.7	1.8	2.0	1.5	2.2	2.3	2.1	3.4	3.4	2.5	1.2

Licensee Comments: none

### Drill/Exercise Performance



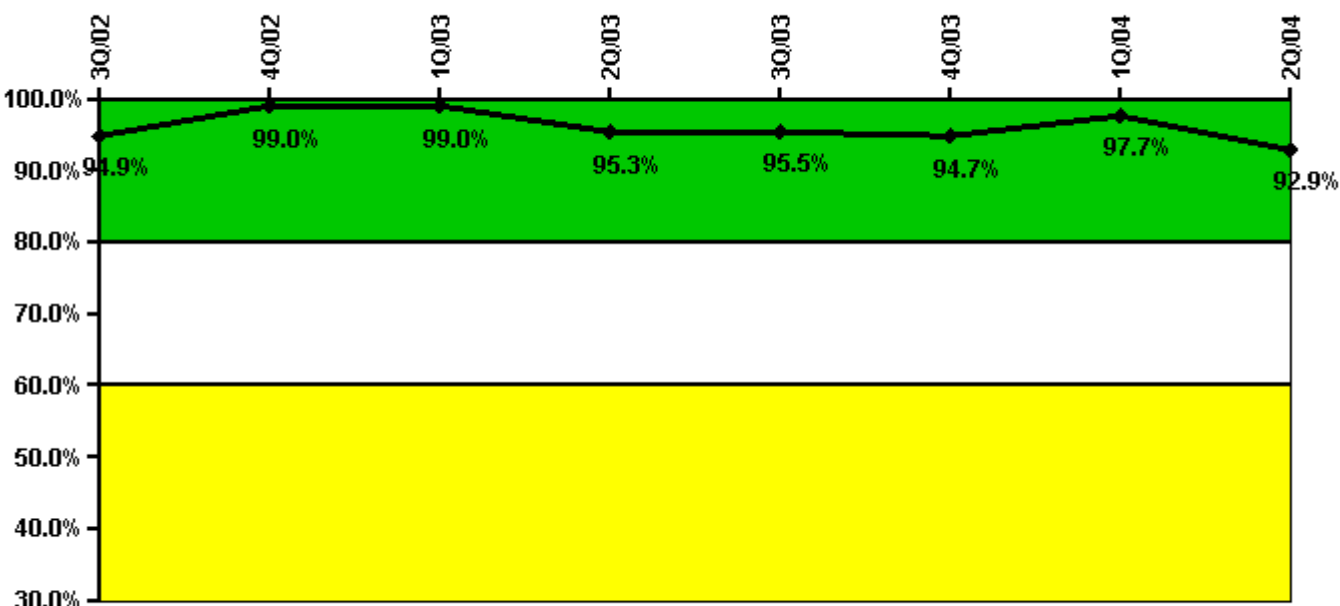
Thresholds: White < 90.0% Yellow < 70.0%

#### Notes

Drill/Exercise Performance	3Q/02	4Q/02	1Q/03	2Q/03	3Q/03	4Q/03	1Q/04	2Q/04
Successful opportunities	36.0	45.0	1.0	66.0	38.0	27.0	43.0	11.0
Total opportunities	37.0	47.0	2.0	70.0	44.0	29.0	45.0	16.0
Indicator value	92.3%	93.1%	92.7%	93.4%	92.2%	93.1%	93.5%	92.1%

Licensee Comments: none

### ERO Drill Participation



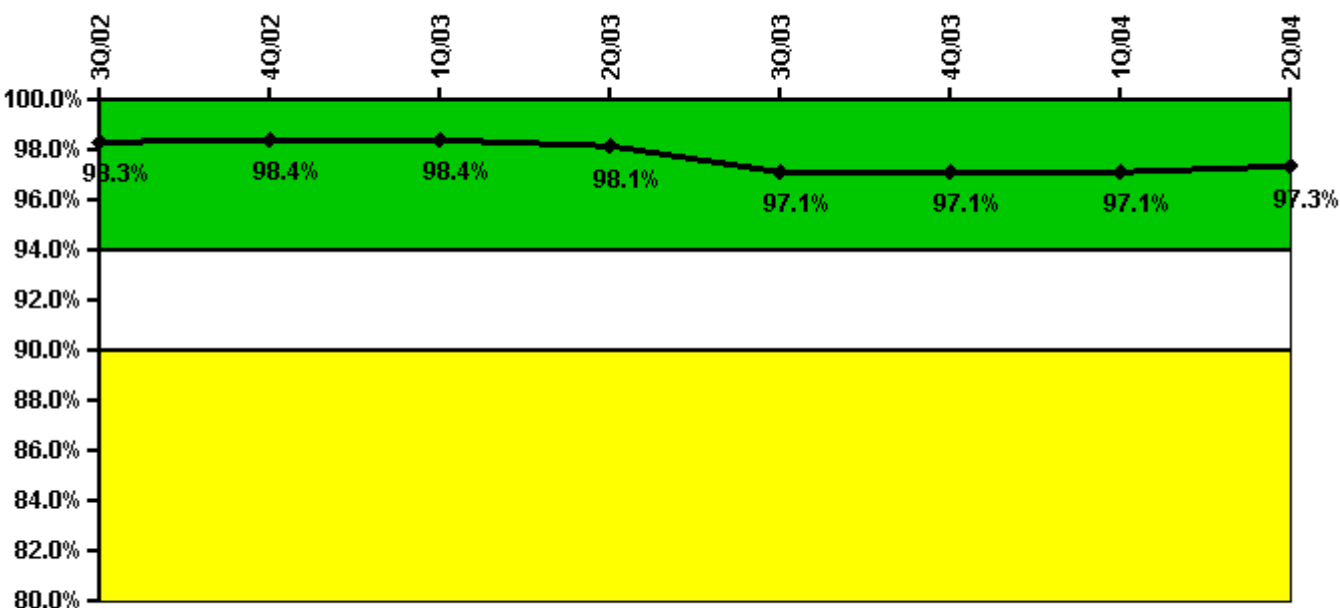
Thresholds: White < 80.0% Yellow < 60.0%

#### Notes

ERO Drill Participation	3Q/02	4Q/02	1Q/03	2Q/03	3Q/03	4Q/03	1Q/04	2Q/04
Participating Key personnel	93.0	100.0	101.0	122.0	127.0	126.0	130.0	131.0
Total Key personnel	98.0	101.0	102.0	128.0	133.0	133.0	133.0	141.0
Indicator value	94.9%	99.0%	99.0%	95.3%	95.5%	94.7%	97.7%	92.9%

Licensee Comments: none

### Alert & Notification System



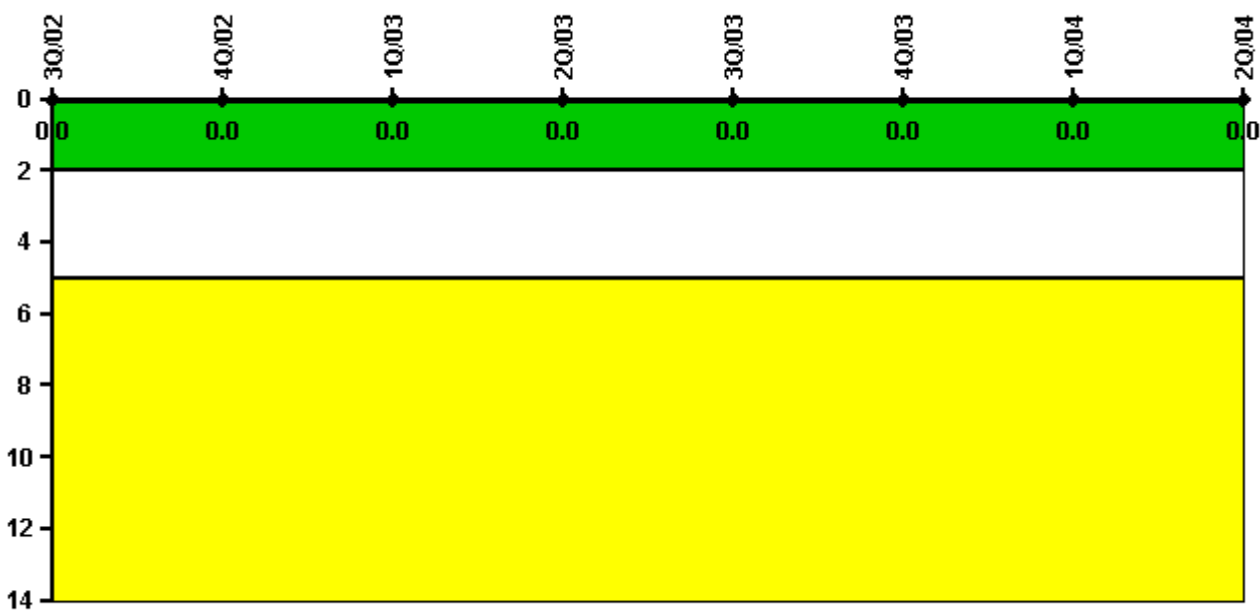
Thresholds: White < 94.0% Yellow < 90.0%

#### Notes

Alert & Notification System	3Q/02	4Q/02	1Q/03	2Q/03	3Q/03	4Q/03	1Q/04	2Q/04
Successful siren-tests	468	314	314	308	453	314	314	312
Total sirens-tests	477	318	318	318	477	318	318	318
Indicator value	98.3%	98.4%	98.4%	98.1%	97.1%	97.1%	97.1%	97.3%

Licensee Comments: none

### Occupational Exposure Control Effectiveness



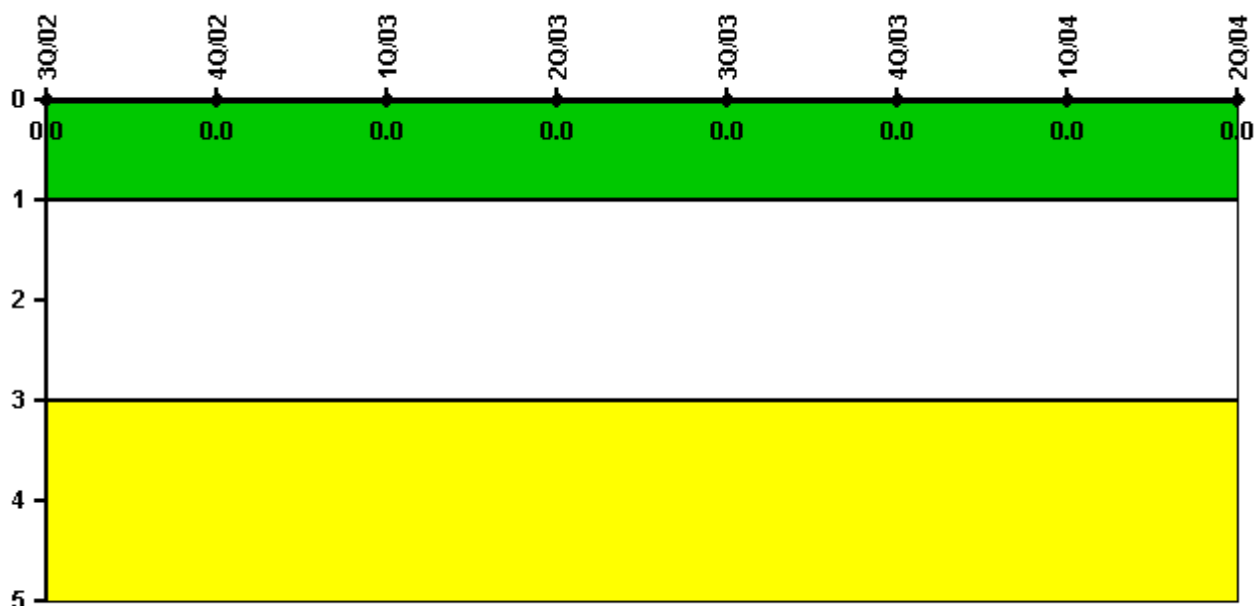
Thresholds: White > 2.0 Yellow > 5.0

#### Notes

Occupational Exposure Control Effectiveness	3Q/02	4Q/02	1Q/03	2Q/03	3Q/03	4Q/03	1Q/04	2Q/04
High radiation area occurrences	0	0	0	0	0	0	0	0
Very high radiation area occurrences	0	0	0	0	0	0	0	0
Unintended exposure occurrences	0	0	0	0	0	0	0	0
<b>Indicator value</b>	<b>0</b>	<b>0</b>	<b>0</b>	<b>0</b>	<b>0</b>	<b>0</b>	<b>0</b>	<b>0</b>

Licensee Comments: none

### RETS/ODCM Radiological Effluent



Thresholds: White > 1.0 Yellow > 3.0

#### Notes

RETS/ODCM Radiological Effluent	3Q/02	4Q/02	1Q/03	2Q/03	3Q/03	4Q/03	1Q/04	2Q/04
RETS/ODCM occurrences	0	0	0	0	0	0	0	0
Indicator value	0	0	0	0	0	0	0	0

Licensee Comments: none

[Physical Protection](#) information not publicly available.

▲ [Action Matrix Summary](#) | [Inspection Findings Summary](#) | [PI Summary](#) | [Reactor Oversight Process](#)

Last Modified: September 8, 2004