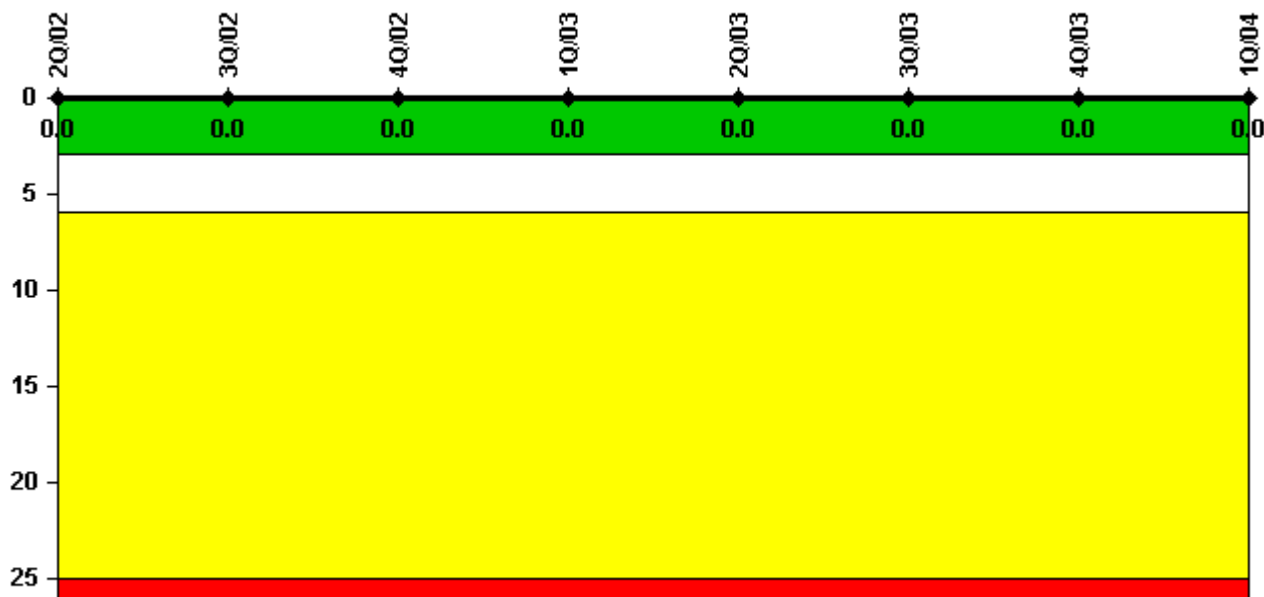


# Three Mile Island 1

## 1Q/2004 Performance Indicators

Licensee's General Comments: none

### Unplanned Scrams per 7000 Critical Hrs



Thresholds: White > 3.0 Yellow > 6.0 Red > 25.0

### Notes

Unplanned Scrams per 7000 Critical Hrs	2Q/02	3Q/02	4Q/02	1Q/03	2Q/03	3Q/03	4Q/03	1Q/04
Unplanned scrams	0	0	0	0	0	0	0	0
Critical hours	2183.0	2208.0	2209.0	2160.0	2183.0	2208.0	1080.7	2184.0
<b>Indicator value</b>	<b>0</b>	<b>0</b>	<b>0</b>	<b>0</b>	<b>0</b>	<b>0</b>	<b>0</b>	<b>0</b>

Licensee Comments: none

### Scrams with Loss of Normal Heat Removal



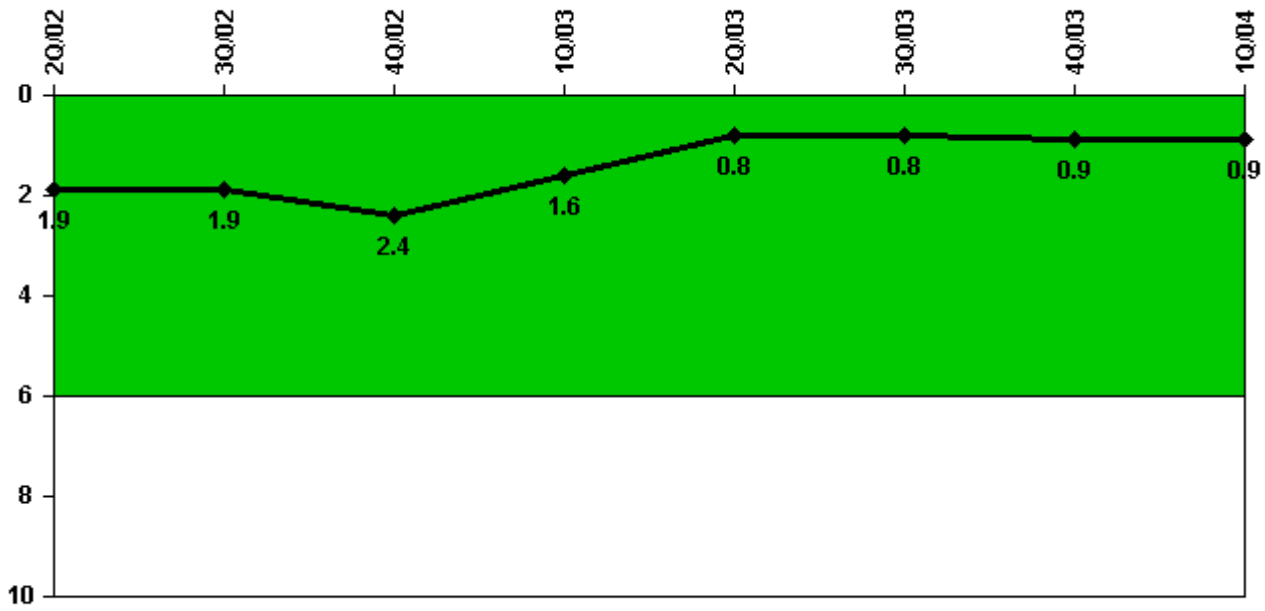
Thresholds: White > 2.0 Yellow > 10.0 Red > 20.0

#### Notes

Scrams with Loss of Normal Heat Removal	2Q/02	3Q/02	4Q/02	1Q/03	2Q/03	3Q/03	4Q/03	1Q/04
Scrams	0	0	0	0	0	0	0	0
Indicator value	0	0	0	0	0	0	0	0

Licensee Comments: none

### Unplanned Power Changes per 7000 Critical Hrs



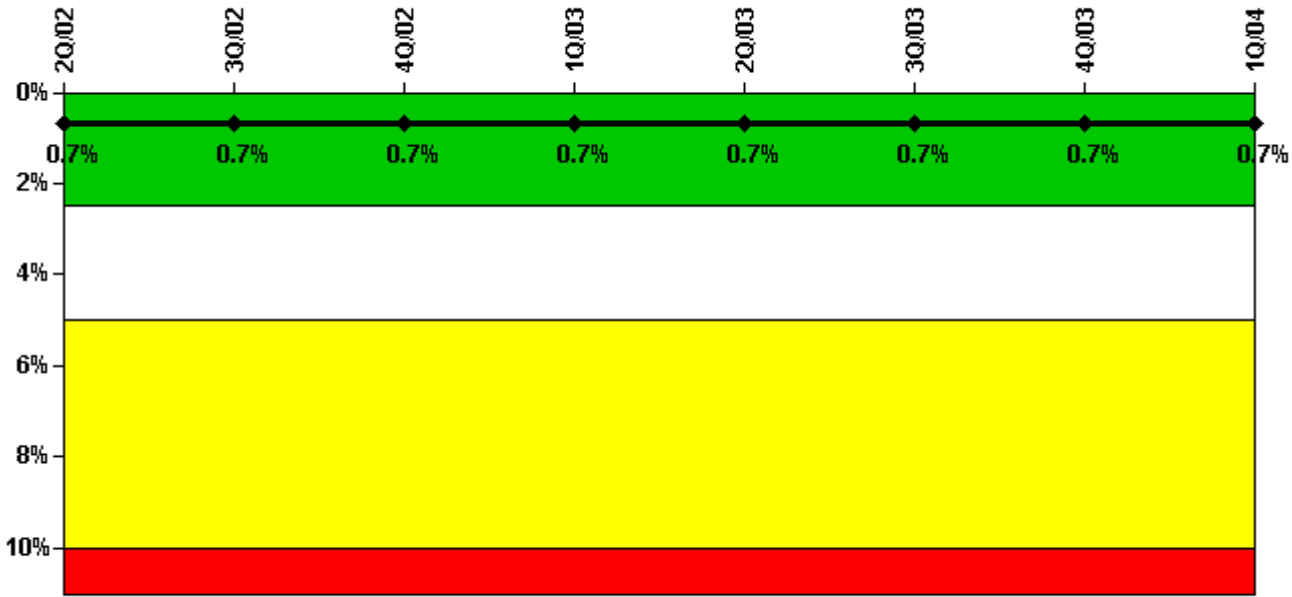
Thresholds: White > 6.0

#### Notes

Unplanned Power Changes per 7000 Critical Hrs	2Q/02	3Q/02	4Q/02	1Q/03	2Q/03	3Q/03	4Q/03	1Q/04
Unplanned power changes	1.0	0	1.0	0	0	0	1.0	0
Critical hours	2183.0	2208.0	2209.0	2160.0	2183.0	2208.0	1080.7	2184.0
Indicator value	1.9	1.9	2.4	1.6	0.8	0.8	0.9	0.9

Licensee Comments: none

### Safety System Unavailability, Emergency AC Power



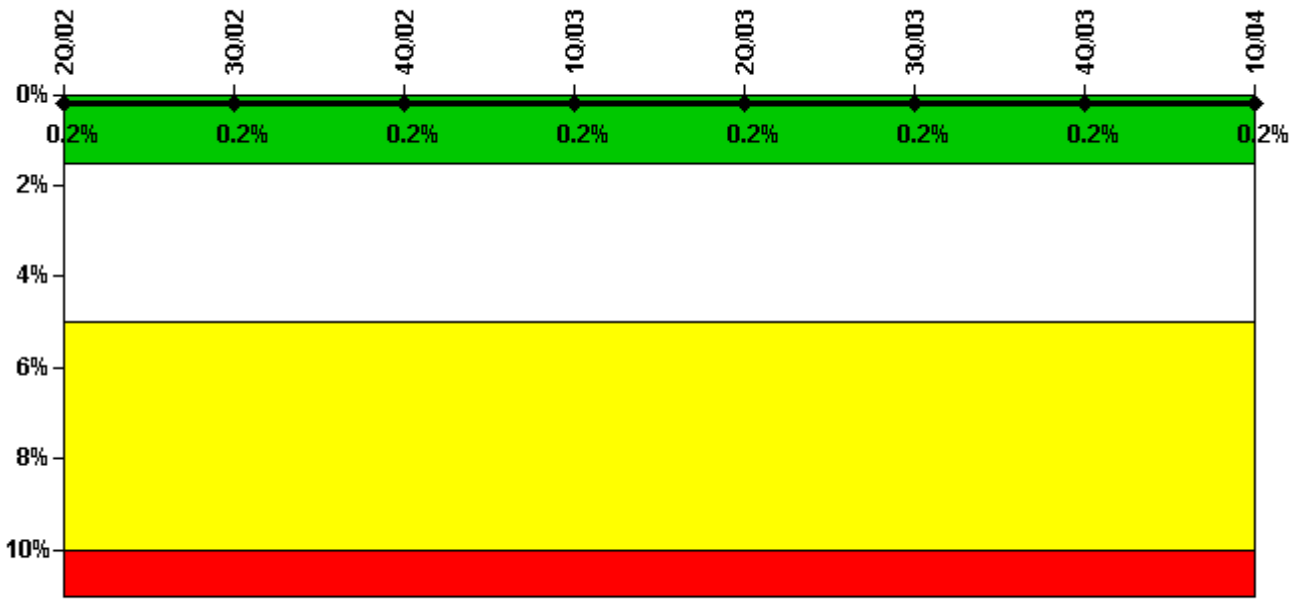
Thresholds: White > 2.5% Yellow > 5.0% Red > 10.0%

#### Notes

Safety System Unavailability, Emergency AC Power	2Q/02	3Q/02	4Q/02	1Q/03	2Q/03	3Q/03	4Q/03	1Q/04
<b>Train 1</b>								
Planned unavailable hours	8.05	10.56	21.53	11.50	11.82	23.42	22.22	10.41
Unplanned unavailable hours	2.03	15.04	0	0	0	0	2.00	0
Fault exposure hours	0	0	0	0	0	0	0	0
Effective Reset hours	0	0	0	0	0	0	0	0
Required hours	2183.00	2208.00	2209.00	2160.00	2183.00	2208.00	1784.00	2184.00
<b>Train 2</b>								
Planned unavailable hours	11.10	15.39	9.00	13.25	12.11	10.81	21.94	14.69
Unplanned unavailable hours	0	0	6.92	0	0	0	0	0
Fault exposure hours	0	0	0	0	0	0	0	0
Effective Reset hours	0	0	0	0	0	0	0	0
Required hours	2183.00	2208.00	2209.00	2160.00	2183.00	2208.00	1784.00	2184.00
<b>Indicator value</b>	<b>0.7%</b>	<b>0.7%</b>	<b>0.7%</b>	<b>0.7%</b>	<b>0.7%</b>	<b>0.7%</b>	<b>0.7%</b>	<b>0.7%</b>

Licensee Comments: none

### Safety System Unavailability, High Pressure Injection System (HPSI)



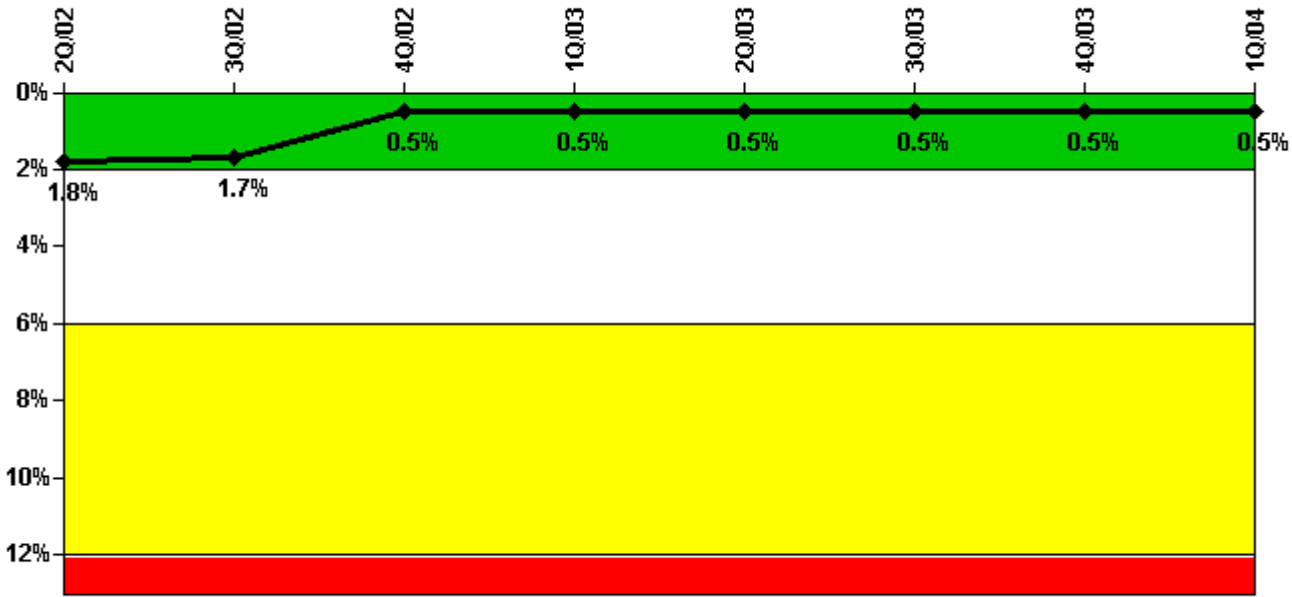
Thresholds: White > 1.5% Yellow > 5.0% Red > 10.0%

#### Notes

Safety System Unavailability, High Pressure Injection System (HPSI)	2Q/02	3Q/02	4Q/02	1Q/03	2Q/03	3Q/03	4Q/03	1Q/04
<b>Train 1</b>								
Planned unavailable hours	0.02	0.50	0.23	25.00	0	0.77	0.83	5.37
Unplanned unavailable hours	0	5.55	0	0	0	0	0	5.60
Fault exposure hours	0	0	0	0	0	0	0	0
Effective Reset hours	0	0	0	0	0	0	0	0
Required hours	2183.00	2208.00	2209.00	2160.00	2183.00	2208.00	1111.10	2184.00
<b>Train 2</b>								
Planned unavailable hours	0.05	20.22	0	0	0.27	0.36	0	0.67
Unplanned unavailable hours	0	1.30	0	1.79	0	0	0	0
Fault exposure hours	0	6.97	0	0	0	0	0	0
Effective Reset hours	0	0	0	0	0	0	0	0
Required hours	2183.00	2208.00	2209.00	2160.00	2183.00	2208.00	1111.10	2184.00
<b>Indicator value</b>	<b>0.2%</b>	<b>0.2%</b>	<b>0.2%</b>	<b>0.2%</b>	<b>0.2%</b>	<b>0.2%</b>	<b>0.2%</b>	<b>0.2%</b>

Licensee Comments: none

### Safety System Unavailability, Heat Removal System (AFW)



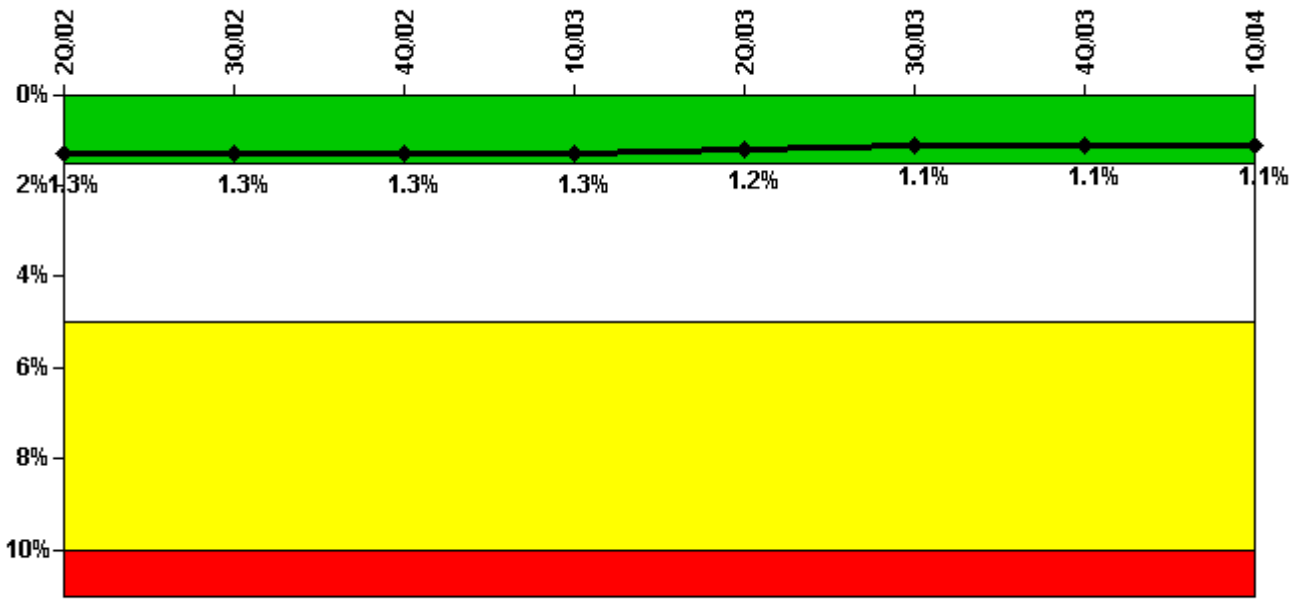
Thresholds: White > 2.0% Yellow > 6.0% Red > 12.0%

#### Notes

Safety System Unavailability, Heat Removal System (AFW)	2Q/02	3Q/02	4Q/02	1Q/03	2Q/03	3Q/03	4Q/03	1Q/04
<b>Train 1</b>								
Planned unavailable hours	13.56	14.44	23.52	5.01	17.98	6.07	21.37	7.44
Unplanned unavailable hours	14.34	0	0	0	0	0	0	0
Fault exposure hours	12.00	0	0	0	0	0	0	0
Effective Reset hours	0	0	0	0	0	0	0	0
Required hours	2183.00	2208.00	2209.00	2160.00	2183.00	2208.00	1166.00	2184.00
<b>Train 2</b>								
Planned unavailable hours	0	0.42	5.07	0	0	0	7.18	0
Unplanned unavailable hours	0	0	0	0	0	0	0	0
Fault exposure hours	0	0	0	0	0	0	0	0
Effective Reset hours	0	0	932.28	0	0	0	0	0
Required hours	2183.00	2208.00	2209.00	2160.00	2183.00	2208.00	1166.00	2184.00
<b>Train 3</b>								
Planned unavailable hours	0	0	0	6.98	0	0	8.08	0
Unplanned unavailable hours	0	0	0	0	0	0	0	2.65
Fault exposure hours	0	0	0	0	0	0	0	0
Effective Reset hours	0	0	0	0	0	0	0	0
Required hours	2183.00	2208.00	2209.00	2160.00	2183.00	2208.00	1166.00	2184.00
<b>Indicator value</b>	<b>1.8%</b>	<b>1.7%</b>	<b>0.5%</b>	<b>0.5%</b>	<b>0.5%</b>	<b>0.5%</b>	<b>0.5%</b>	<b>0.5%</b>

Licensee Comments: none

### Safety System Unavailability, Residual Heat Removal System



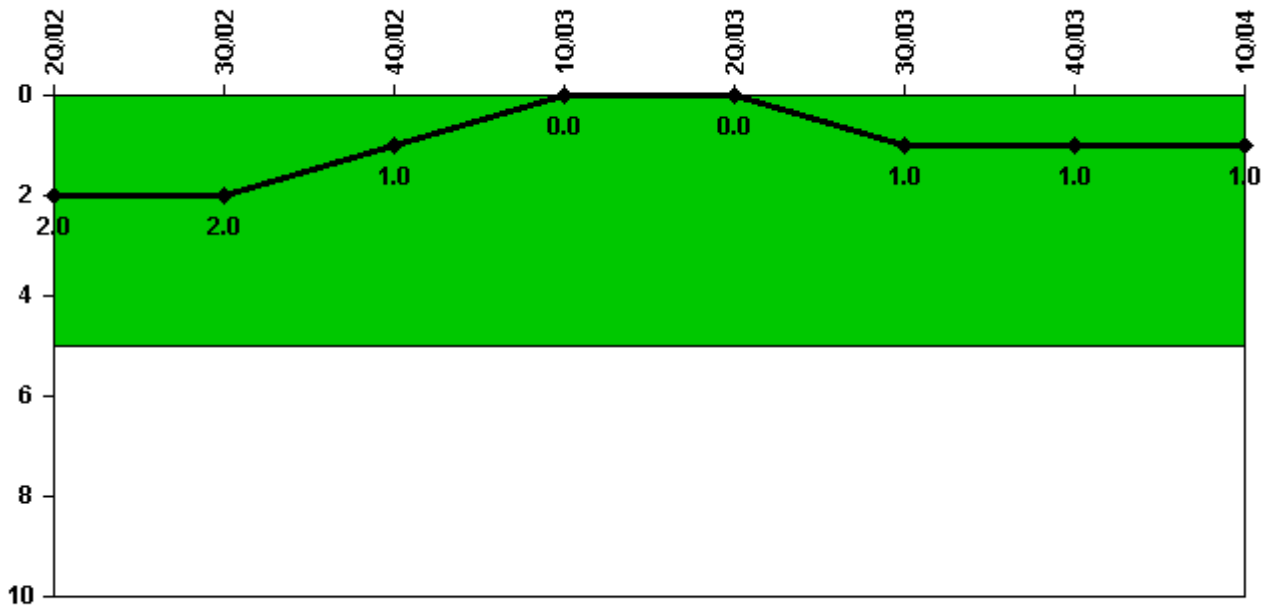
Thresholds: White > 1.5% Yellow > 5.0% Red > 10.0%

#### Notes

Safety System Unavailability, Residual Heat Removal System	2Q/02	3Q/02	4Q/02	1Q/03	2Q/03	3Q/03	4Q/03	1Q/04
<b>Train 1</b>								
Planned unavailable hours	61.06	24.32	2.27	2.23	14.13	28.08	1.35	2.72
Unplanned unavailable hours	0.10	0	0	0	0	0	0	0
Fault exposure hours	0	0	0	0	0	0	0	0
Effective Reset hours	0	0	0	0	0	0	0	0
Required hours	2183.00	2208.00	2209.00	2160.00	2183.00	2208.00	2002.00	2184.00
<b>Train 2</b>								
Planned unavailable hours	22.83	42.55	1.30	31.13	15.04	1.27	1.25	0.77
Unplanned unavailable hours	0	10.48	0	0	0	0	0	5.62
Fault exposure hours	0	6.97	0	0	0	0	0	0
Effective Reset hours	0	0	0	0	0	0	0	0
Required hours	2183.00	2208.00	2209.00	2160.00	2183.00	2208.00	2002.00	2184.00
<b>Indicator value</b>	<b>1.3%</b>	<b>1.3%</b>	<b>1.3%</b>	<b>1.3%</b>	<b>1.2%</b>	<b>1.1%</b>	<b>1.1%</b>	<b>1.1%</b>

Licensee Comments: none

### Safety System Functional Failures (PWR)



Thresholds: White > 5.0

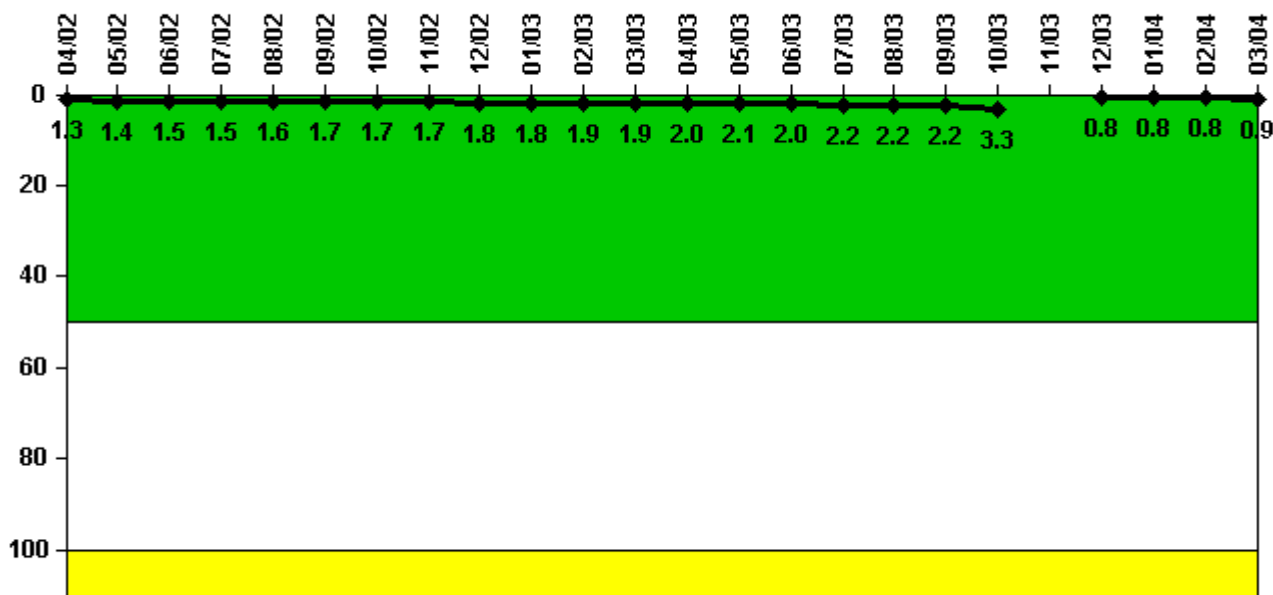
#### Notes

Safety System Functional Failures (PWR)	2Q/02	3Q/02	4Q/02	1Q/03	2Q/03	3Q/03	4Q/03	1Q/04
Safety System Functional Failures	0	0	0	0	0	1	0	0
Indicator value	2	2	1	0	0	1	1	1

Licensee Comments: none



### Reactor Coolant System Activity



Thresholds: White > 50.0 Yellow > 100.0

#### Notes

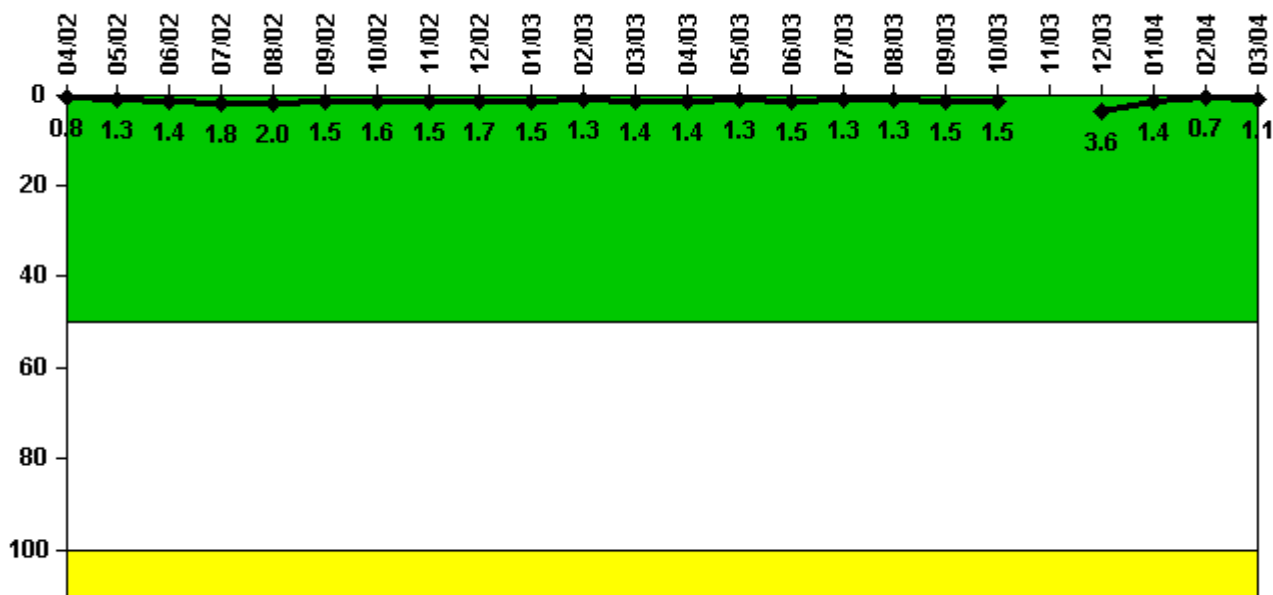
Reactor Coolant System Activity	4/02	5/02	6/02	7/02	8/02	9/02	10/02	11/02	12/02	1/03	2/03	3/03
Maximum activity	0.004720	0.004870	0.005110	0.005340	0.005680	0.005920	0.005810	0.006040	0.006230	0.006430	0.006700	0.006760
Technical specification limit	0.4	0.4	0.4	0.4	0.4	0.4	0.4	0.4	0.4	0.4	0.4	0.4
Indicator value	1.3	1.4	1.5	1.5	1.6	1.7	1.7	1.7	1.8	1.8	1.9	1.9

Reactor Coolant System Activity	4/03	5/03	6/03	7/03	8/03	9/03	10/03	11/03	12/03	1/04	2/04	3/04
Maximum activity	0.007100	0.007250	0.006940	0.007630	0.007730	0.007790	0.011600	N/A	0.002920	0.002680	0.002800	0.002980
Technical specification limit	0.4	0.4	0.4	0.4	0.4	0.4	0.4	0.4	0.4	0.4	0.4	0.4
Indicator value	2.0	2.1	2.0	2.2	2.2	2.2	3.3	N/A	0.8	0.8	0.8	0.9

Licensee Comments: none

### Reactor Coolant System Leakage



Thresholds: White > 50.0 Yellow > 100.0

#### Notes

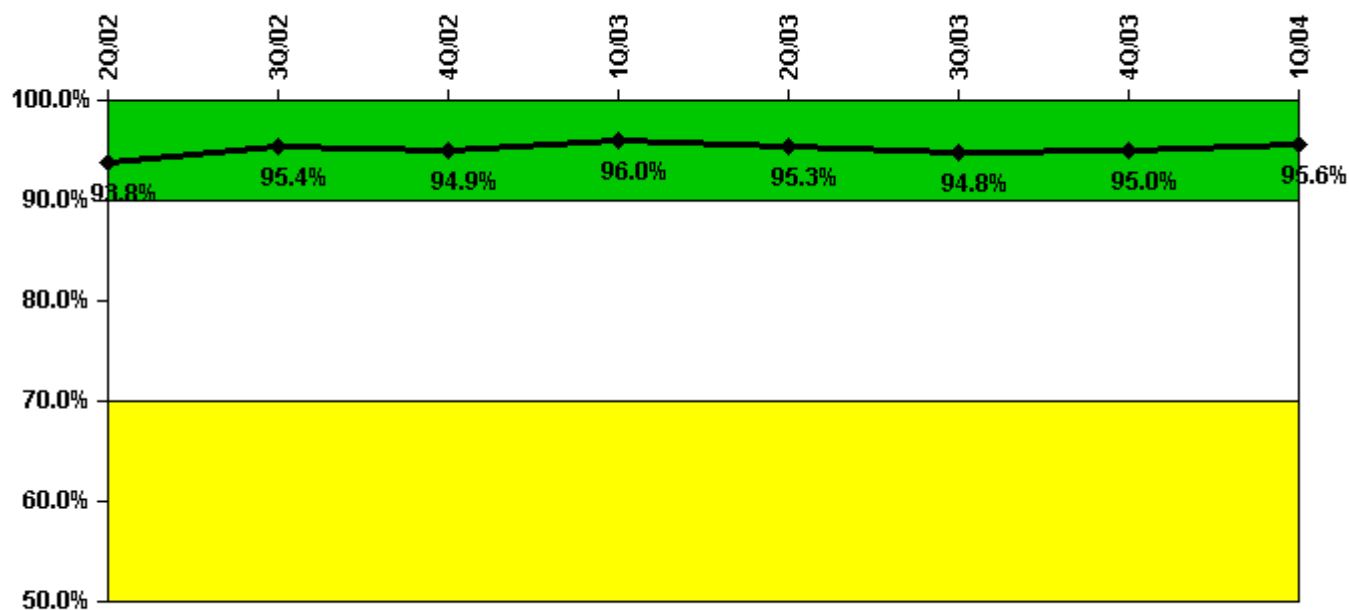
Reactor Coolant System Leakage	4/02	5/02	6/02	7/02	8/02	9/02	10/02	11/02	12/02	1/03	2/03	3/03
Maximum leakage	0.082	0.126	0.144	0.180	0.200	0.150	0.157	0.147	0.175	0.146	0.133	0.144
Technical specification limit	10.0	10.0	10.0	10.0	10.0	10.0	10.0	10.0	10.0	10.0	10.0	10.0
Indicator value	0.8	1.3	1.4	1.8	2.0	1.5	1.6	1.5	1.7	1.5	1.3	1.4

Reactor Coolant System Leakage	4/03	5/03	6/03	7/03	8/03	9/03	10/03	11/03	12/03	1/04	2/04	3/04
Maximum leakage	0.139	0.125	0.146	0.126	0.134	0.146	0.146	N/A	0.357	0.139	0.069	0.108
Technical specification limit	10.0	10.0	10.0	10.0	10.0	10.0	10.0	10.0	10.0	10.0	10.0	10.0
Indicator value	1.4	1.3	1.5	1.3	1.3	1.5	1.5	N/A	3.6	1.4	0.7	1.1

Licensee Comments: none

### Drill/Exercise Performance



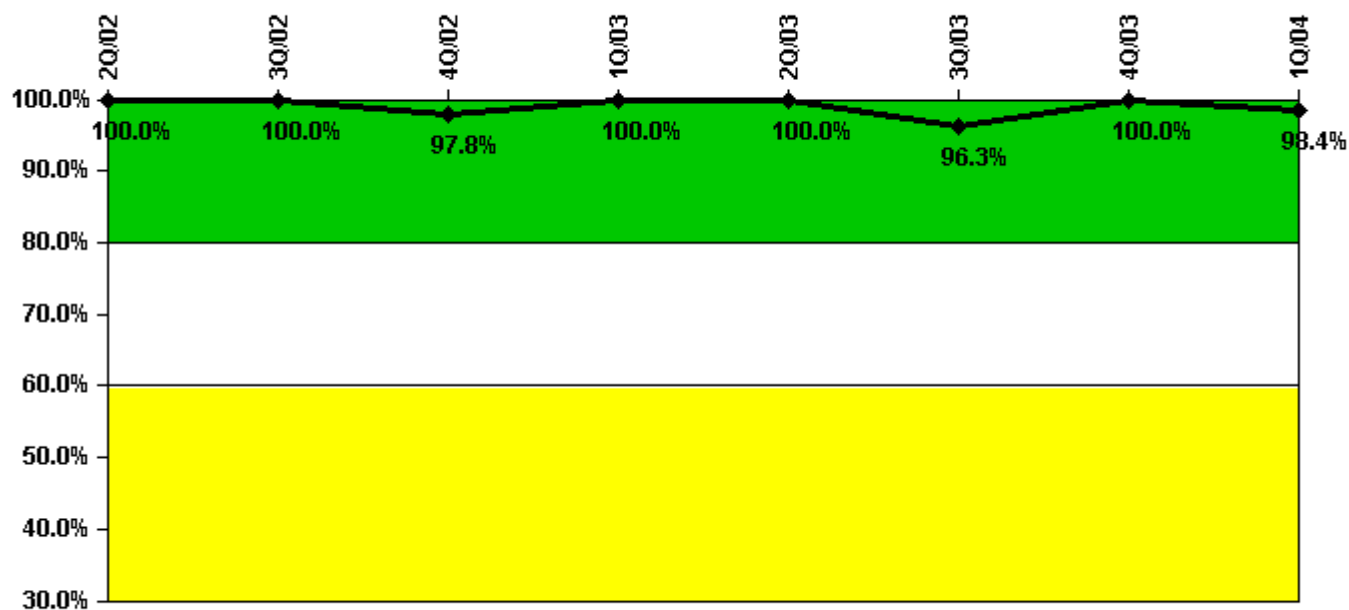
Thresholds: White < 90.0% Yellow < 70.0%

#### Notes

Drill/Exercise Performance	2Q/02	3Q/02	4Q/02	1Q/03	2Q/03	3Q/03	4Q/03	1Q/04
Successful opportunities	9.0	23.0	2.0	41.0	44.0	55.0	8.0	55.0
Total opportunities	10.0	24.0	2.0	42.0	47.0	58.0	8.0	57.0
Indicator value	93.8%	95.4%	94.9%	96.0%	95.3%	94.8%	95.0%	95.6%

Licensee Comments: none

### ERO Drill Participation



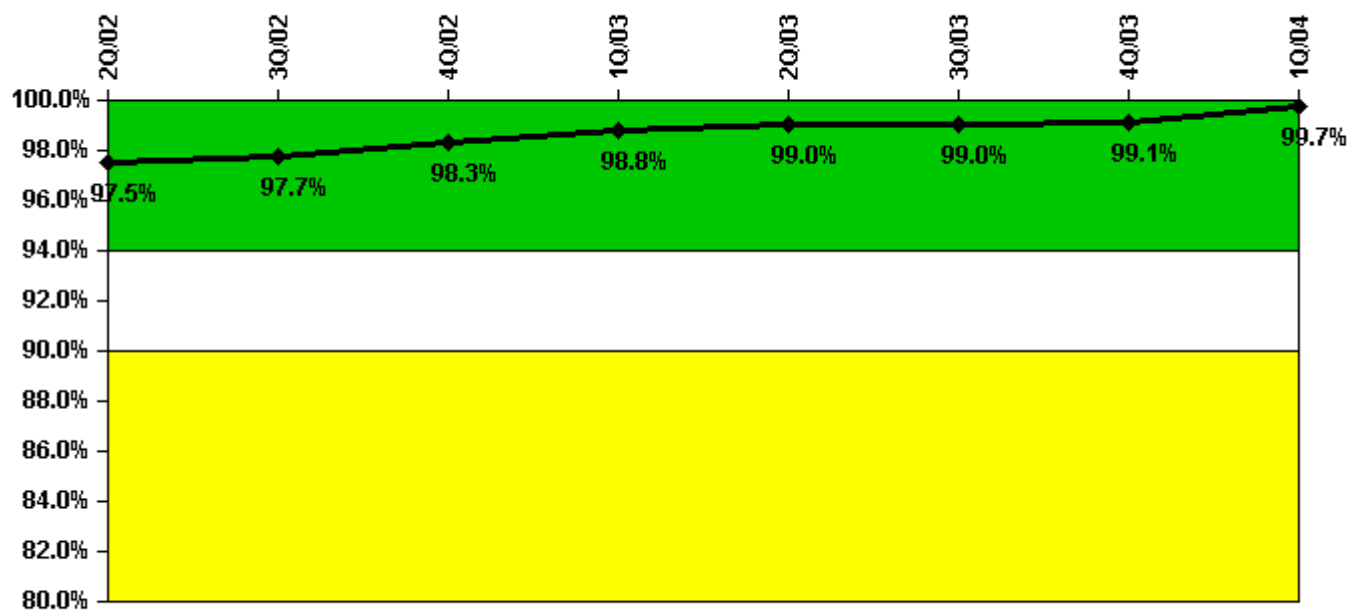
Thresholds: White < 80.0% Yellow < 60.0%

#### Notes

ERO Drill Participation	2Q/02	3Q/02	4Q/02	1Q/03	2Q/03	3Q/03	4Q/03	1Q/04
Participating Key personnel	36.0	43.0	44.0	49.0	50.0	52.0	53.0	60.0
Total Key personnel	36.0	43.0	45.0	49.0	50.0	54.0	53.0	61.0
Indicator value	100.0%	100.0%	97.8%	100.0%	100.0%	96.3%	100.0%	98.4%

Licensee Comments: none

### Alert & Notification System



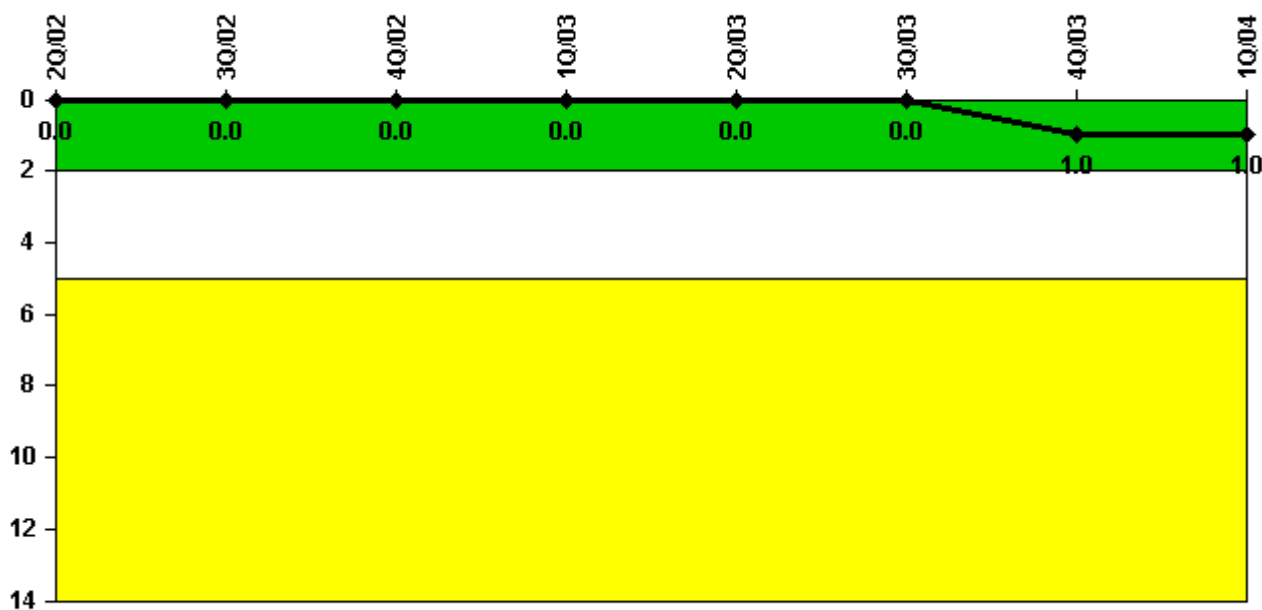
Thresholds: White < 94.0% Yellow < 90.0%

#### Notes

Alert & Notification System	2Q/02	3Q/02	4Q/02	1Q/03	2Q/03	3Q/03	4Q/03	1Q/04
Successful siren-tests	1095	1176	1022	1002	1023	1020	1103	1027
Total sirens-tests	1106	1185	1027	1027	1027	1027	1106	1027
Indicator value	97.5%	97.7%	98.3%	98.8%	99.0%	99.0%	99.1%	99.7%

Licensee Comments: none

### Occupational Exposure Control Effectiveness



Thresholds: White > 2.0 Yellow > 5.0

#### Notes

Occupational Exposure Control Effectiveness	2Q/02	3Q/02	4Q/02	1Q/03	2Q/03	3Q/03	4Q/03	1Q/04
High radiation area occurrences	0	0	0	0	0	0	1	0
Very high radiation area occurrences	0	0	0	0	0	0	0	0
Unintended exposure occurrences	0	0	0	0	0	0	0	0
<b>Indicator value</b>	<b>0</b>	<b>0</b>	<b>0</b>	<b>0</b>	<b>0</b>	<b>0</b>	<b>1</b>	<b>1</b>

#### Licensee Comments:

4Q/03: PI revised to include an event that occurred during the T1R15 refueling outage. A contractor employee was allowed access to a radiation area >1 rem per hour without complying with all of the controls required for the activity. The event was re-evaluated in the 1st quarter 2004, as a failure to maintain "radiological control over access to technical specification high radiation areas". The change in the PI data does not result in a change in the PI color, which remains Green.

### RETS/ODCM Radiological Effluent



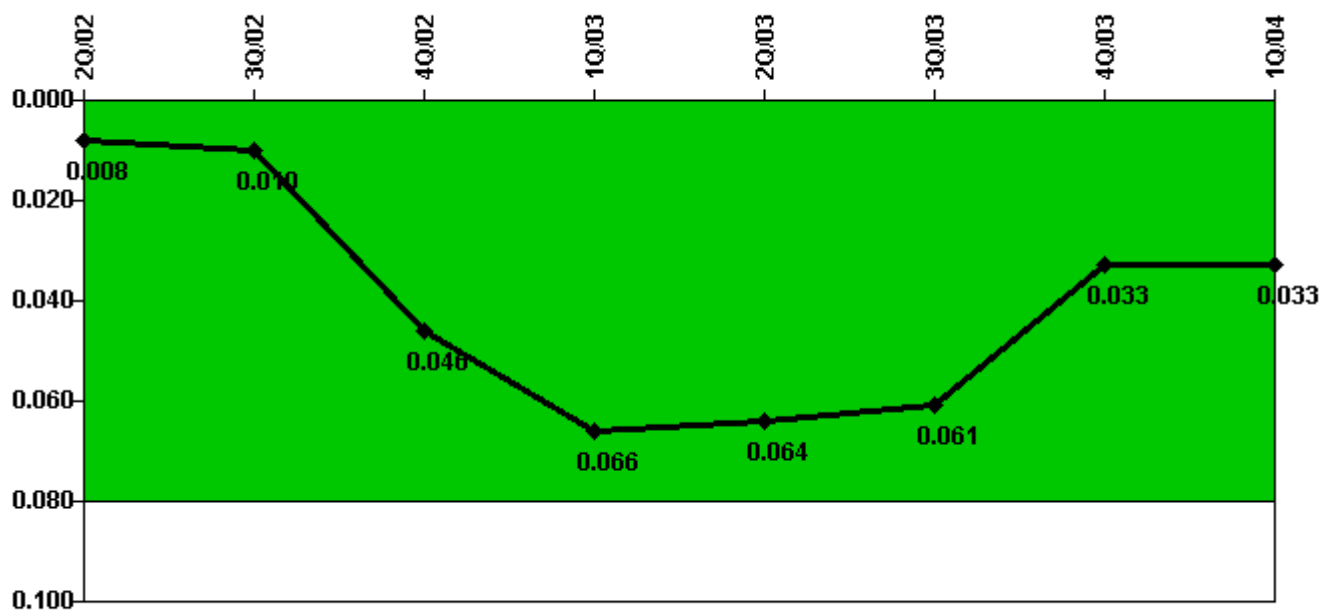
Thresholds: White > 1.0 Yellow > 3.0

#### Notes

RETS/ODCM Radiological Effluent	2Q/02	3Q/02	4Q/02	1Q/03	2Q/03	3Q/03	4Q/03	1Q/04
RETS/ODCM occurrences	0	0	0	0	0	0	0	0
<b>Indicator value</b>	<b>0</b>	<b>0</b>	<b>0</b>	<b>0</b>	<b>0</b>	<b>0</b>	<b>0</b>	<b>0</b>

Licensee Comments: none

### Protected Area Security Performance Index



Thresholds: White > 0.080

#### Notes

Protected Area Security Performance Index	2Q/02	3Q/02	4Q/02	1Q/03	2Q/03	3Q/03	4Q/03	1Q/04
IDS compensatory hours	53.55	60.25	804.06	520.21	14.80	0	191.60	520.80
CCTV compensatory hours	1.2	0	0	0	0.6	0	0	0
IDS normalization factor	1.25	1.25	1.25	1.25	1.25	1.25	1.25	1.25
CCTV normalization factor	1.0	1.0	1.0	1.0	1.0	1.0	1.0	1.0
<b>Index Value</b>	<b>0.008</b>	<b>0.010</b>	<b>0.046</b>	<b>0.066</b>	<b>0.064</b>	<b>0.061</b>	<b>0.033</b>	<b>0.033</b>

Licensee Comments: none



### Personnel Screening Program



Thresholds: White > 2.0 Yellow > 5.0

#### Notes

Personnel Screening Program	2Q/02	3Q/02	4Q/02	1Q/03	2Q/03	3Q/03	4Q/03	1Q/04
Program failures	0	0	0	0	0	0	0	0
Indicator value	0	0	0	0	0	0	0	0

Licensee Comments: none

### FFD/Personnel Reliability



Thresholds: White > 2.0 Yellow > 5.0

#### Notes

FFD/Personnel Reliability	2Q/02	3Q/02	4Q/02	1Q/03	2Q/03	3Q/03	4Q/03	1Q/04
Program Failures	0	0	0	0	0	0	0	0
<b>Indicator value</b>	<b>0</b>	<b>0</b>	<b>0</b>	<b>0</b>	<b>0</b>	<b>0</b>	<b>0</b>	<b>0</b>

Licensee Comments: none

▲ [PI Summary](#) | [Inspection Findings Summary](#) | [Reactor Oversight Process](#)

Last Modified: April 22, 2004