

## Saint Lucie 2

### 1Q/2004 Performance Indicators

Licensee's General Comments: none

#### Unplanned Scrams per 7000 Critical Hrs



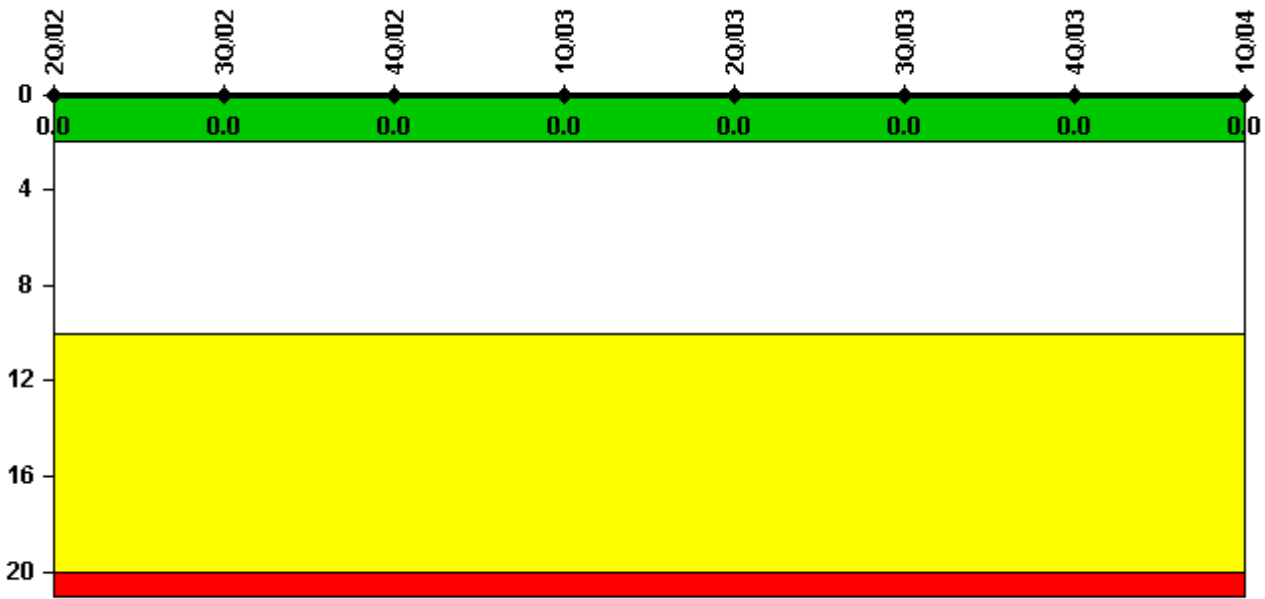
Thresholds: White > 3.0 Yellow > 6.0 Red > 25.0

#### Notes

Unplanned Scrams per 7000 Critical Hrs	2Q/02	3Q/02	4Q/02	1Q/03	2Q/03	3Q/03	4Q/03	1Q/04
Unplanned scrams	0	0	0	0	2.0	0	2.0	0
Critical hours	2183.0	2208.0	2209.0	2160.0	841.2	2208.0	2068.8	2184.0
<b>Indicator value</b>	<b>0</b>	<b>0</b>	<b>0</b>	<b>0</b>	<b>1.9</b>	<b>1.9</b>	<b>3.8</b>	<b>3.8</b>

Licensee Comments: none

### Scrams with Loss of Normal Heat Removal



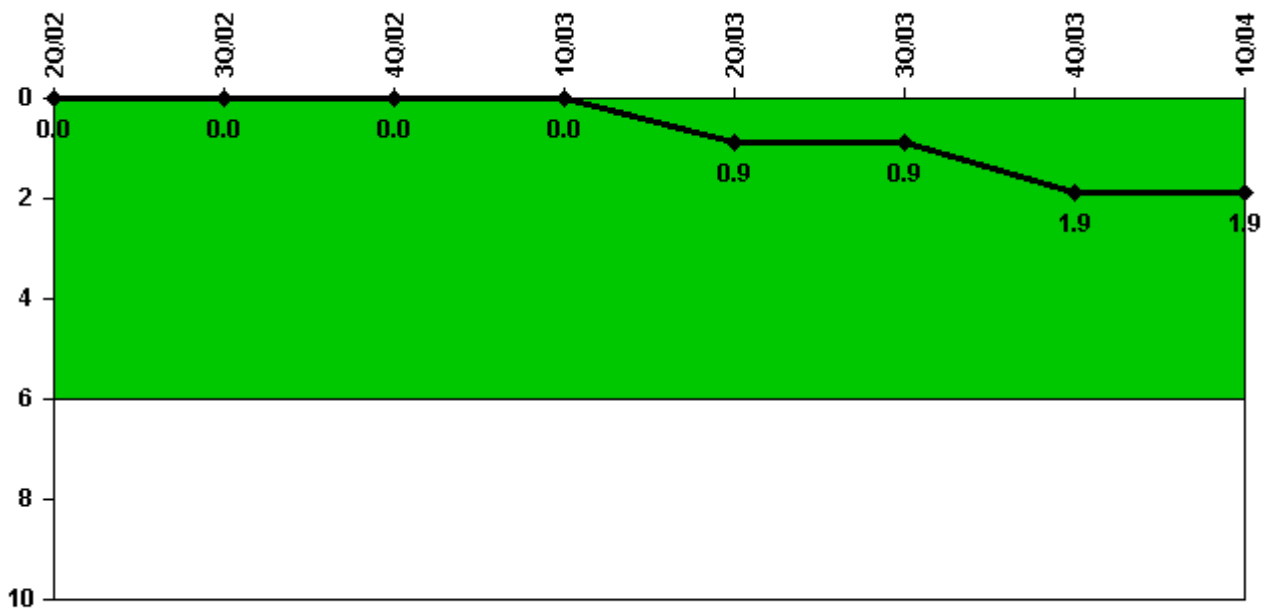
Thresholds: White > 2.0 Yellow > 10.0 Red > 20.0

#### Notes

Scrams with Loss of Normal Heat Removal	2Q/02	3Q/02	4Q/02	1Q/03	2Q/03	3Q/03	4Q/03	1Q/04
Scrams	0	0	0	0	0	0	0	0
Indicator value	0	0	0	0	0	0	0	0

Licensee Comments: none

### Unplanned Power Changes per 7000 Critical Hrs



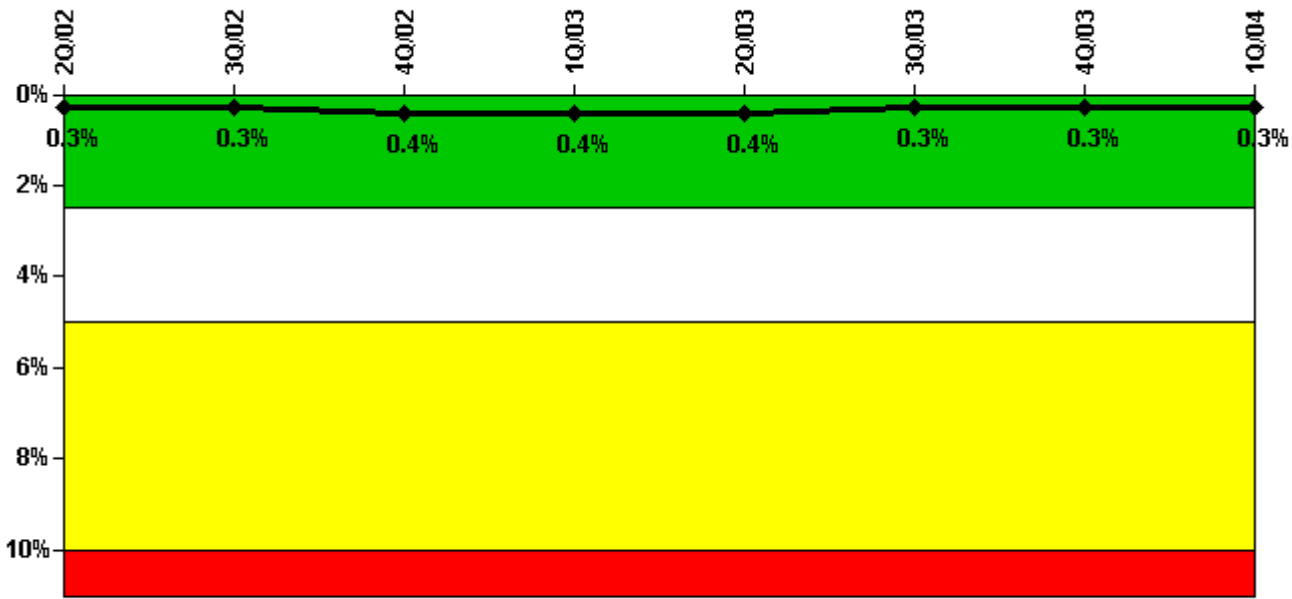
Thresholds: White > 6.0

#### Notes

Unplanned Power Changes per 7000 Critical Hrs	2Q/02	3Q/02	4Q/02	1Q/03	2Q/03	3Q/03	4Q/03	1Q/04
Unplanned power changes	0	0	0	0	1.0	0	1.0	0
Critical hours	2183.0	2208.0	2209.0	2160.0	841.2	2208.0	2068.8	2184.0
Indicator value	0	0	0	0	0.9	0.9	1.9	1.9

Licensee Comments: none

### Safety System Unavailability, Emergency AC Power



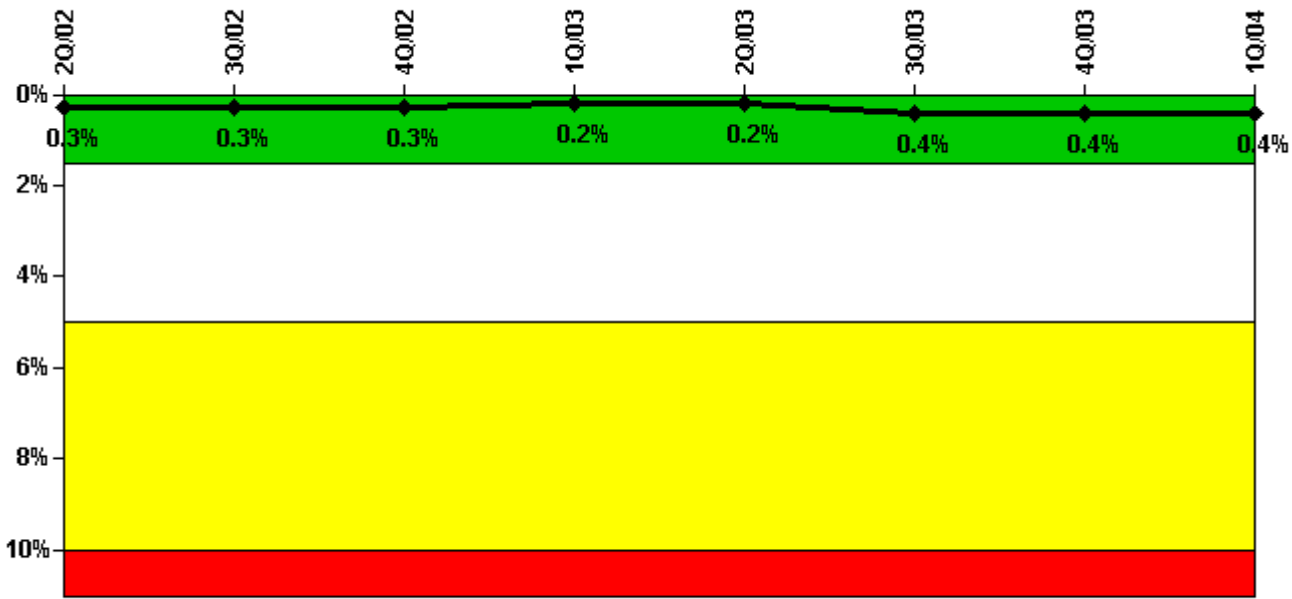
Thresholds: White > 2.5% Yellow > 5.0% Red > 10.0%

#### Notes

Safety System Unavailability, Emergency AC Power	2Q/02	3Q/02	4Q/02	1Q/03	2Q/03	3Q/03	4Q/03	1Q/04
<b>Train 1</b>								
Planned unavailable hours	5.90	6.40	7.00	9.00	3.90	6.50	6.01	6.80
Unplanned unavailable hours	1.90	0	0	0	0	0	0	0
Fault exposure hours	0	0	0	0	0	0	0	0
Effective Reset hours	0	0	0	0	0	0	0	0
Required hours	2183.00	2208.00	2209.00	2160.00	1697.20	2208.00	2209.00	2184.00
<b>Train 2</b>								
Planned unavailable hours	5.90	6.50	7.60	5.60	4.30	7.20	7.27	7.50
Unplanned unavailable hours	0	0	0	0	0	8.20	0	6.20
Fault exposure hours	0	0	0	0	0	0	0	0
Effective Reset hours	0	0	0	0	0	0	0	0
Required hours	2183.00	2208.00	2209.00	2160.00	1697.20	2208.00	2209.00	2184.00
<b>Indicator value</b>	<b>0.3%</b>	<b>0.3%</b>	<b>0.4%</b>	<b>0.4%</b>	<b>0.4%</b>	<b>0.3%</b>	<b>0.3%</b>	<b>0.3%</b>

Licensee Comments: none

### Safety System Unavailability, High Pressure Injection System (HPSI)



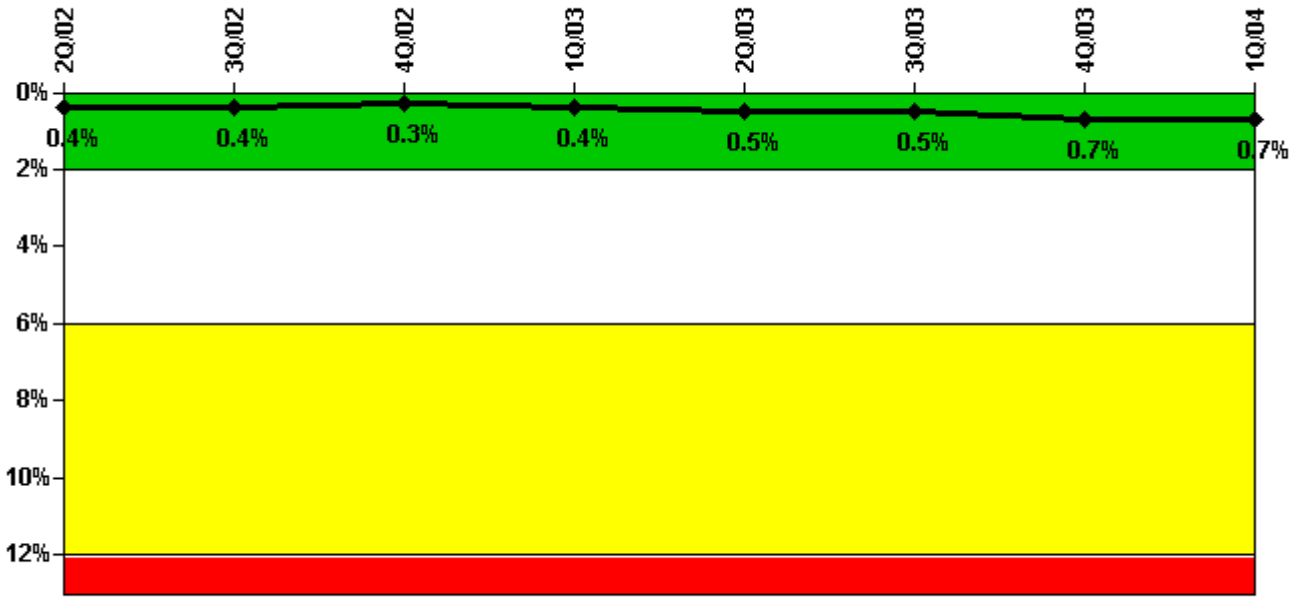
Thresholds: White > 1.5% Yellow > 5.0% Red > 10.0%

#### Notes

Safety System Unavailability, High Pressure Injection System (HPSI)	2Q/02	3Q/02	4Q/02	1Q/03	2Q/03	3Q/03	4Q/03	1Q/04
<b>Train 1</b>								
Planned unavailable hours	6.00	0.90	0.40	3.00	6.10	29.40	0.60	0.40
Unplanned unavailable hours	0	0	0	0	0	23.30	0	0
Fault exposure hours	0	0	0	0	0	0	0	0
Effective Reset hours	0	0	0	0	0	0	0	0
Required hours	2183.00	2208.00	2209.00	2160.00	1132.00	2208.00	2209.00	2184.00
<b>Train 2</b>								
Planned unavailable hours	7.00	0.60	1.20	2.10	2.40	32.80	0.30	0.40
Unplanned unavailable hours	0	0	0	0	0	0	0	0
Fault exposure hours	0	0	0	0	0	0	0	0
Effective Reset hours	0	0	0	0	0	0	0	0
Required hours	2183.00	2208.00	2209.00	2160.00	1132.00	2208.00	2209.00	2184.00
<b>Indicator value</b>	<b>0.3%</b>	<b>0.3%</b>	<b>0.3%</b>	<b>0.2%</b>	<b>0.2%</b>	<b>0.4%</b>	<b>0.4%</b>	<b>0.4%</b>

Licensee Comments: none

### Safety System Unavailability, Heat Removal System (AFW)



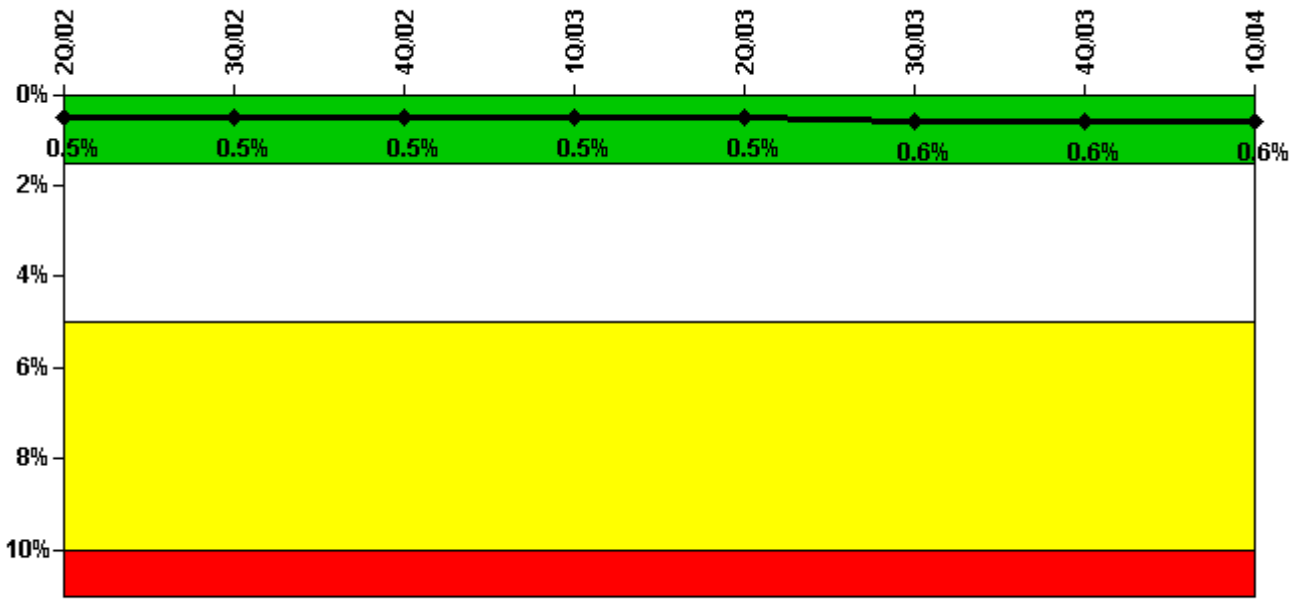
Thresholds: White > 2.0% Yellow > 6.0% Red > 12.0%

#### Notes

Safety System Unavailability, Heat Removal System (AFW)	2Q/02	3Q/02	4Q/02	1Q/03	2Q/03	3Q/03	4Q/03	1Q/04
<b>Train 1</b>								
Planned unavailable hours	10.10	1.30	2.00	13.10	2.40	1.50	12.50	3.20
Unplanned unavailable hours	0	0	0	0	0	0	0	0
Fault exposure hours	0	0	0	0	0	0	0	0
Effective Reset hours	0	0	0	0	0	0	0	0
Required hours	2183.00	2208.00	2209.00	2160.00	1180.90	2208.00	2209.00	2184.00
<b>Train 2</b>								
Planned unavailable hours	1.90	2.80	2.20	10.30	2.30	10.00	1.40	1.80
Unplanned unavailable hours	0	0	0	0	0	0	0	0
Fault exposure hours	0	0	0	0	0	0	0	0
Effective Reset hours	0	0	0	0	0	0	0	0
Required hours	2183.00	2208.00	2209.00	2160.00	1180.90	2208.00	2209.00	2184.00
<b>Train 3</b>								
Planned unavailable hours	11.50	7.40	14.20	18.70	2.20	7.70	14.60	12.30
Unplanned unavailable hours	0	0	0	0	62.70	0	125.40	0
Fault exposure hours	0	0	0	0	0	0	0	0
Effective Reset hours	0	0	0	0	0	0	0	0
Required hours	2183.00	2208.00	2209.00	2160.00	1180.90	2208.00	2209.00	2184.00
<b>Indicator value</b>	<b>0.4%</b>	<b>0.4%</b>	<b>0.3%</b>	<b>0.4%</b>	<b>0.5%</b>	<b>0.5%</b>	<b>0.7%</b>	<b>0.7%</b>

Licensee Comments: none

### Safety System Unavailability, Residual Heat Removal System



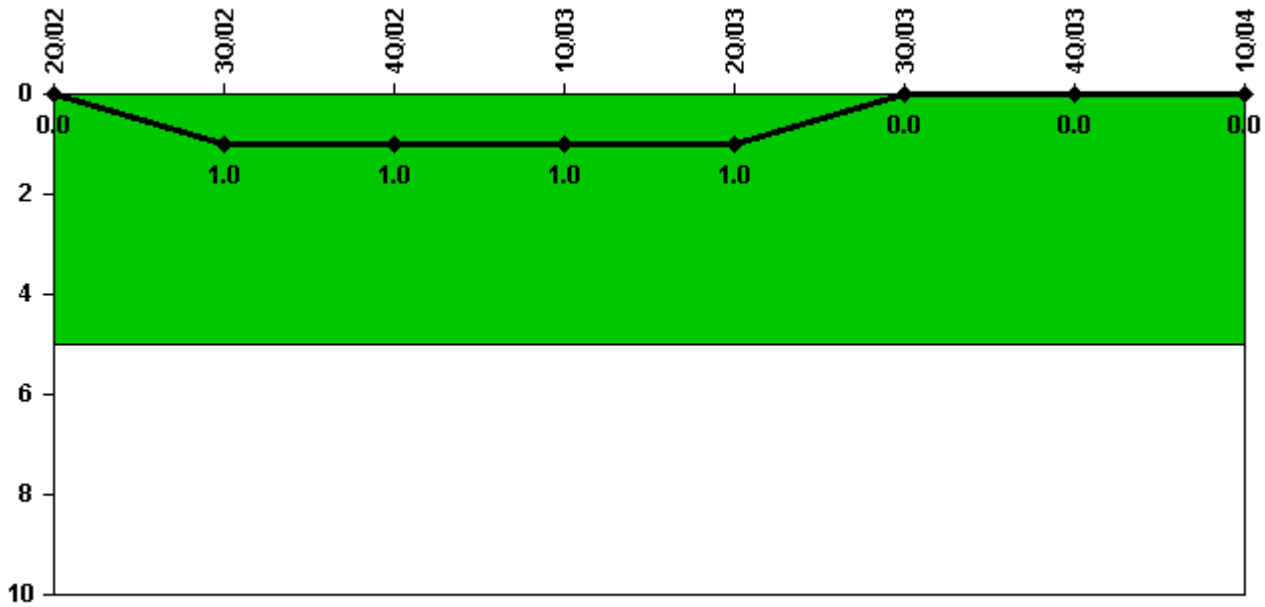
Thresholds: White > 1.5% Yellow > 5.0% Red > 10.0%

#### Notes

Safety System Unavailability, Residual Heat Removal System	2Q/02	3Q/02	4Q/02	1Q/03	2Q/03	3Q/03	4Q/03	1Q/04
<b>Train 1</b>								
Planned unavailable hours	9.10	49.00	4.00	5.20	0.50	34.70	12.10	60.50
Unplanned unavailable hours	0	0	0	0	0	23.30	0	0
Fault exposure hours	0	0	0	0	0	0	0	0
Effective Reset hours	0	0	0	0	0	0	0	0
Required hours	2183.00	2208.00	2209.00	2160.00	1132.00	2208.00	2209.00	2184.00
<b>Train 2</b>								
Planned unavailable hours	49.90	4.10	4.90	38.40	0.40	45.50	6.10	49.40
Unplanned unavailable hours	0	0	0	0	0	0	0	0
Fault exposure hours	0	0	0	0	0	0	0	0
Effective Reset hours	0	0	0	0	0	0	0	0
Required hours	2183.00	2208.00	2209.00	2160.00	1132.00	2208.00	2209.00	2184.00
<b>Train 3</b>								
Planned unavailable hours	0	0	0	0	0	0	0	0
Unplanned unavailable hours	0	0	0	0	0	0	0	0
Fault exposure hours	0	0	0	0	0	0	0	0
Effective Reset hours	0	0	0	0	0	0	0	0
Required hours	0	0	0	0	693.90	0	0	0
<b>Train 4</b>								
Planned unavailable hours	0	0	0	0	0	0	0	0
Unplanned unavailable hours	0	0	0	0	0	0	0	0
Fault exposure hours	0	0	0	0	0	0	0	0
Effective Reset hours	0	0	0	0	0	0	0	0
Required hours	0	0	0	0	693.90	0	0	0
<b>Indicator value</b>	<b>0.5%</b>	<b>0.5%</b>	<b>0.5%</b>	<b>0.5%</b>	<b>0.5%</b>	<b>0.6%</b>	<b>0.6%</b>	<b>0.6%</b>

Licensee Comments: none

### Safety System Functional Failures (PWR)



Thresholds: White > 5.0

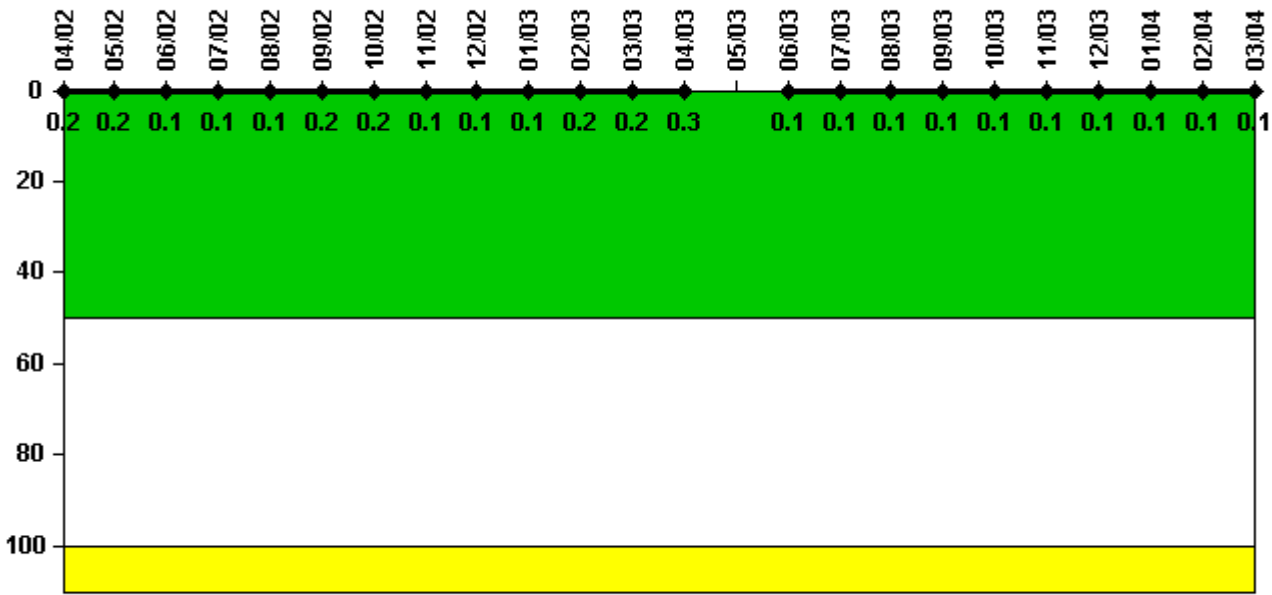
#### Notes

Safety System Functional Failures (PWR)	2Q/02	3Q/02	4Q/02	1Q/03	2Q/03	3Q/03	4Q/03	1Q/04
Safety System Functional Failures	0	1	0	0	0	0	0	0
Indicator value	0	1	1	1	1	0	0	0

Licensee Comments: none



### Reactor Coolant System Activity



Thresholds: White > 50.0 Yellow > 100.0

#### Notes

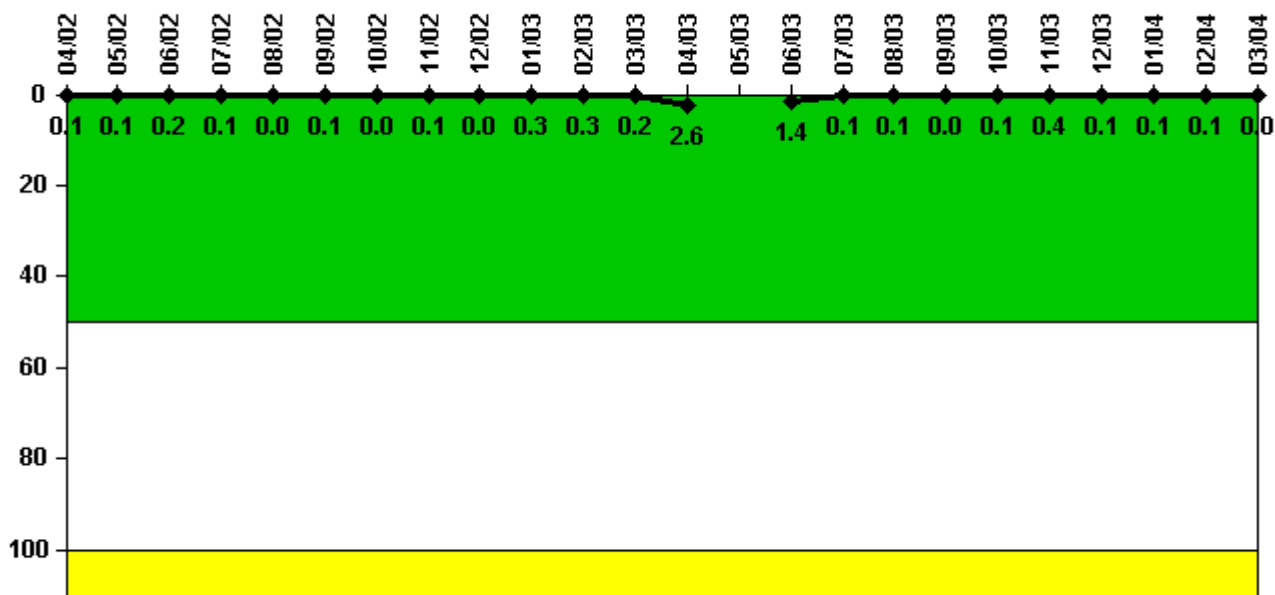
Reactor Coolant System Activity	4/02	5/02	6/02	7/02	8/02	9/02	10/02	11/02	12/02	1/03	2/03	3/03
Maximum activity	0.001580	0.001610	0.001460	0.001490	0.001470	0.001730	0.001680	0.001380	0.001330	0.001400	0.001660	0.001590
Technical specification limit	1.0	1.0	1.0	1.0	1.0	1.0	1.0	1.0	1.0	1.0	1.0	1.0
Indicator value	0.2	0.2	0.1	0.1	0.1	0.2	0.2	0.1	0.1	0.1	0.2	0.2

Reactor Coolant System Activity	4/03	5/03	6/03	7/03	8/03	9/03	10/03	11/03	12/03	1/04	2/04	3/04
Maximum activity	0.003190	N/A	0.000944	0.001140	0.001040	0.001170	0.001200	0.001100	0.001260	0.001110	0.001150	0.001130
Technical specification limit	1.0	1.0	1.0	1.0	1.0	1.0	1.0	1.0	1.0	1.0	1.0	1.0
Indicator value	0.3	N/A	0.1	0.1	0.1	0.1	0.1	0.1	0.1	0.1	0.1	0.1

Licensee Comments: none

### Reactor Coolant System Leakage



Thresholds: White > 50.0 Yellow > 100.0

#### Notes

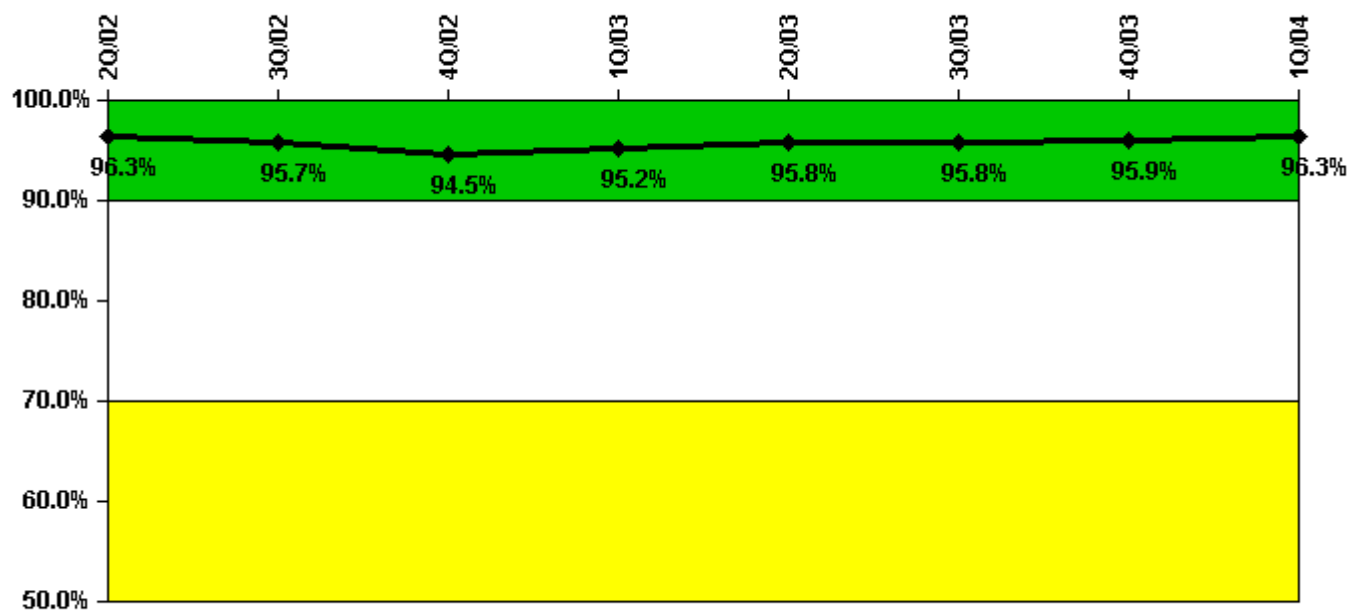
Reactor Coolant System Leakage	4/02	5/02	6/02	7/02	8/02	9/02	10/02	11/02	12/02	1/03	2/03	3/03
Maximum leakage	0.010	0.010	0.020	0.005	0	0.007	0.002	0.005	0	0.030	0.030	0.015
Technical specification limit	10.0	10.0	10.0	10.0	10.0	10.0	10.0	10.0	10.0	10.0	10.0	10.0
Indicator value	0.1	0.1	0.2	0.1	0	0.1	0	0.1	0	0.3	0.3	0.2

Reactor Coolant System Leakage	4/03	5/03	6/03	7/03	8/03	9/03	10/03	11/03	12/03	1/04	2/04	3/04
Maximum leakage	0.260	N/A	0.135	0.007	0.010	0.004	0.005	0.039	0.010	0.010	0.010	0
Technical specification limit	10.0	10.0	10.0	10.0	10.0	10.0	10.0	10.0	10.0	10.0	10.0	10.0
Indicator value	2.6	N/A	1.4	0.1	0.1	0	0.1	0.4	0.1	0.1	0.1	0

Licensee Comments: none

### Drill/Exercise Performance



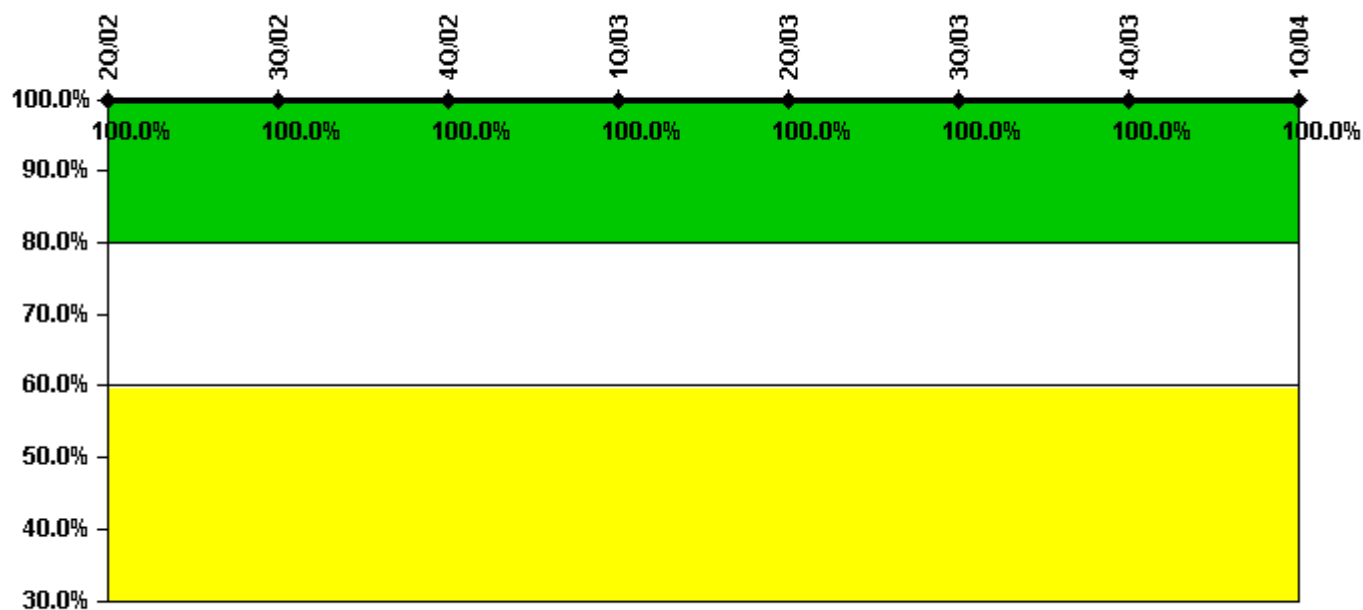
Thresholds: White < 90.0% Yellow < 70.0%

### Notes

Drill/Exercise Performance	2Q/02	3Q/02	4Q/02	1Q/03	2Q/03	3Q/03	4Q/03	1Q/04
Successful opportunities	13.0	70.0	5.0	87.0	48.0	80.0	67.0	50.0
Total opportunities	14.0	73.0	6.0	89.0	50.0	83.0	70.0	51.0
Indicator value	96.3%	95.7%	94.5%	95.2%	95.8%	95.8%	95.9%	96.3%

Licensee Comments: none

### ERO Drill Participation



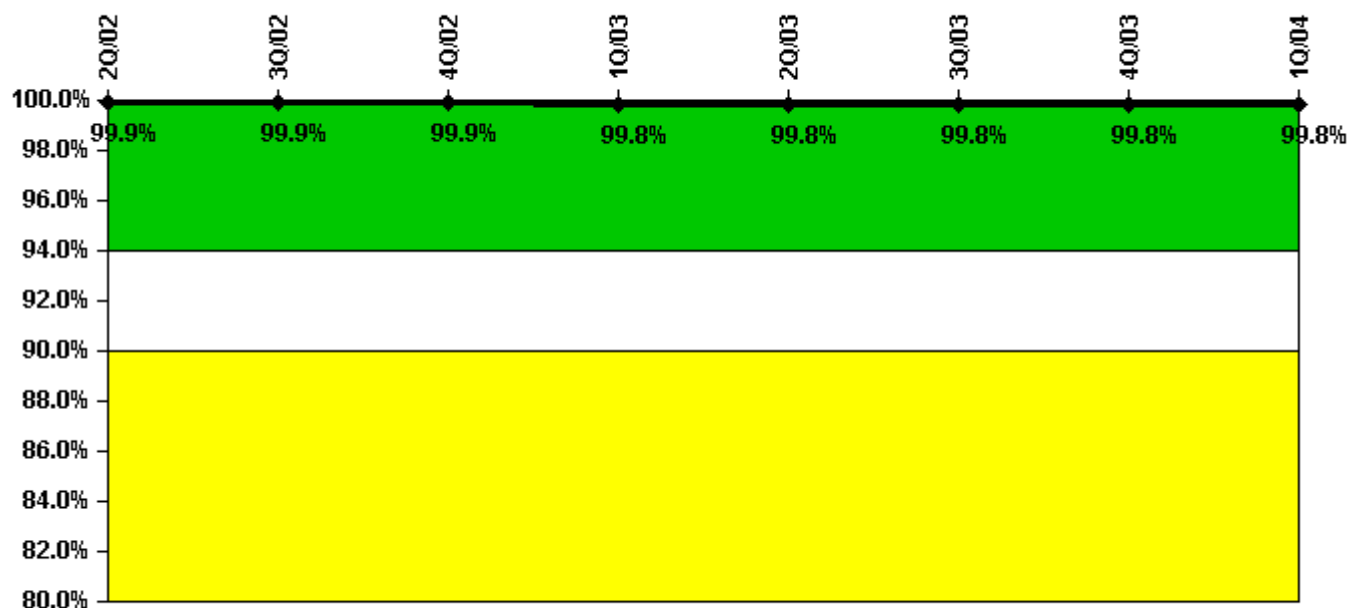
Thresholds: White < 80.0% Yellow < 60.0%

#### Notes

ERO Drill Participation	2Q/02	3Q/02	4Q/02	1Q/03	2Q/03	3Q/03	4Q/03	1Q/04
Participating Key personnel	75.0	79.0	75.0	82.0	84.0	81.0	74.0	77.0
Total Key personnel	75.0	79.0	75.0	82.0	84.0	81.0	74.0	77.0
Indicator value	100.0%	100.0%	100.0%	100.0%	100.0%	100.0%	100.0%	100.0%

Licensee Comments: none

### Alert & Notification System



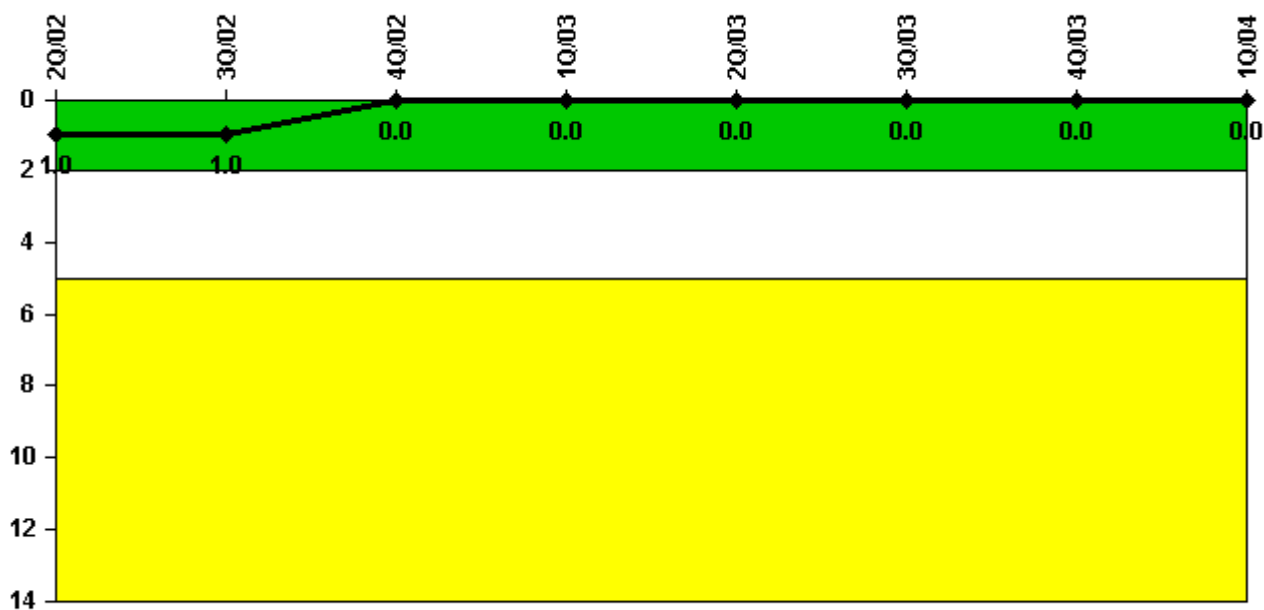
Thresholds: White < 94.0% Yellow < 90.0%

#### Notes

Alert & Notification System	2Q/02	3Q/02	4Q/02	1Q/03	2Q/03	3Q/03	4Q/03	1Q/04
Successful siren-tests	527	704	527	709	533	710	533	712
Total sirens-tests	528	704	528	711	534	712	534	712
Indicator value	99.9%	99.9%	99.9%	99.8%	99.8%	99.8%	99.8%	99.8%

Licensee Comments: none

### Occupational Exposure Control Effectiveness



Thresholds: White > 2.0 Yellow > 5.0

#### Notes

Occupational Exposure Control Effectiveness	2Q/02	3Q/02	4Q/02	1Q/03	2Q/03	3Q/03	4Q/03	1Q/04
High radiation area occurrences	0	0	0	0	0	0	0	0
Very high radiation area occurrences	0	0	0	0	0	0	0	0
Unintended exposure occurrences	0	0	0	0	0	0	0	0
<b>Indicator value</b>	<b>1</b>	<b>1</b>	<b>0</b>	<b>0</b>	<b>0</b>	<b>0</b>	<b>0</b>	<b>0</b>

Licensee Comments: none

### RETS/ODCM Radiological Effluent



Thresholds: White > 1.0 Yellow > 3.0

#### Notes

RETS/ODCM Radiological Effluent	2Q/02	3Q/02	4Q/02	1Q/03	2Q/03	3Q/03	4Q/03	1Q/04
RETS/ODCM occurrences	0	0	0	0	0	0	0	0
<b>Indicator value</b>	<b>0</b>	<b>0</b>	<b>0</b>	<b>0</b>	<b>0</b>	<b>0</b>	<b>0</b>	<b>0</b>

Licensee Comments: none

### Protected Area Security Performance Index



Thresholds: White > 0.080

#### Notes

Protected Area Security Performance Index	2Q/02	3Q/02	4Q/02	1Q/03	2Q/03	3Q/03	4Q/03	1Q/04
IDS compensatory hours	39.30	6.80	0	4.40	28.80	10.00	0	30.00
CCTV compensatory hours	0	0	0	0	9.5	0	0	0
IDS normalization factor	1.80	1.80	1.80	1.80	1.80	1.80	1.80	1.80
CCTV normalization factor	1.5	1.5	1.5	1.5	1.5	1.5	1.5	1.5
<b>Index Value</b>	<b>0.004</b>	<b>0.002</b>	<b>0.002</b>	<b>0.002</b>	<b>0.002</b>	<b>0.002</b>	<b>0.002</b>	<b>0.003</b>

Licensee Comments: none



### Personnel Screening Program



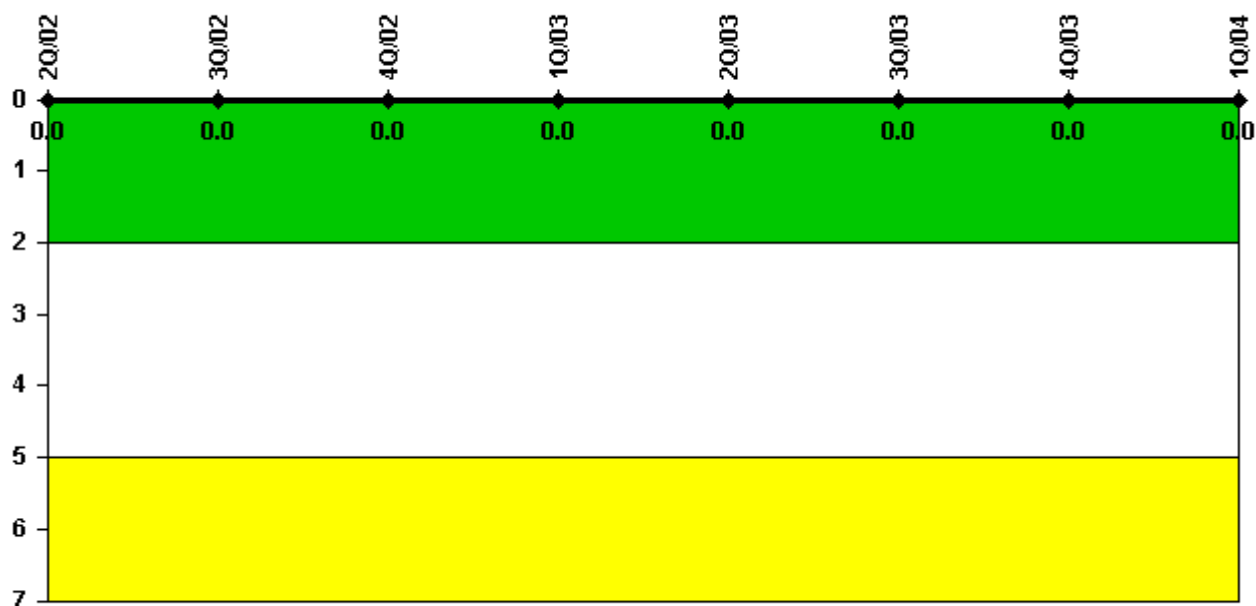
Thresholds: White > 2.0 Yellow > 5.0

#### Notes

Personnel Screening Program	2Q/02	3Q/02	4Q/02	1Q/03	2Q/03	3Q/03	4Q/03	1Q/04
Program failures	0	0	0	0	0	0	0	0
<b>Indicator value</b>	<b>0</b>	<b>0</b>	<b>0</b>	<b>0</b>	<b>0</b>	<b>0</b>	<b>0</b>	<b>0</b>

Licensee Comments: none

### FFD/Personnel Reliability



Thresholds: White > 2.0 Yellow > 5.0

### Notes

FFD/Personnel Reliability	2Q/02	3Q/02	4Q/02	1Q/03	2Q/03	3Q/03	4Q/03	1Q/04
Program Failures	0	0	0	0	0	0	0	0
<b>Indicator value</b>	<b>0</b>	<b>0</b>	<b>0</b>	<b>0</b>	<b>0</b>	<b>0</b>	<b>0</b>	<b>0</b>

Licensee Comments: none

▲ [PI Summary](#) | [Inspection Findings Summary](#) | [Reactor Oversight Process](#)

Last Modified: April 22, 2004