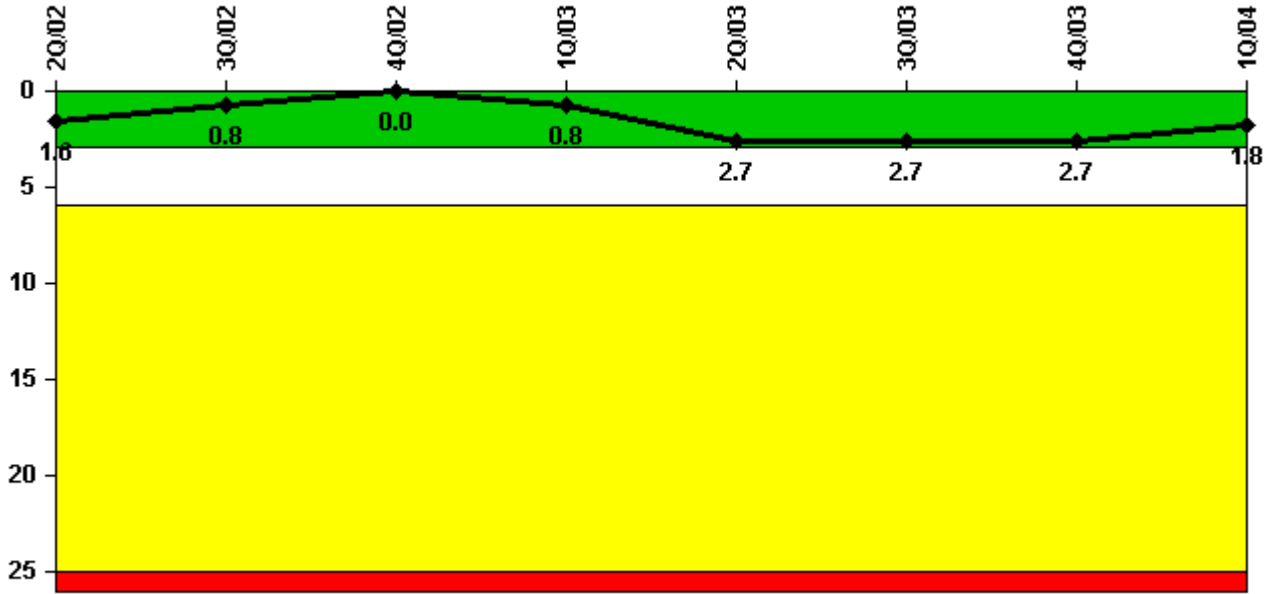


Pilgrim 1

1Q/2004 Performance Indicators

Licensee's General Comments: none

Unplanned Scrams per 7000 Critical Hrs



Thresholds: White > 3.0 Yellow > 6.0 Red > 25.0

Notes

Unplanned Scrams per 7000 Critical Hrs	2Q/02	3Q/02	4Q/02	1Q/03	2Q/03	3Q/03	4Q/03	1Q/04
Unplanned scrams	0	0	0	1.0	2.0	0	0	0
Critical hours	2183.0	2208.0	2209.0	1971.0	1519.0	2188.0	1984.0	2138.6
Indicator value	1.6	0.8	0	0.8	2.7	2.7	2.7	1.8

Licensee Comments:

1Q/04: Reflects unplanned scrams on 2/21/03, 5/19/03, and 6/1/03.

Scrams with Loss of Normal Heat Removal



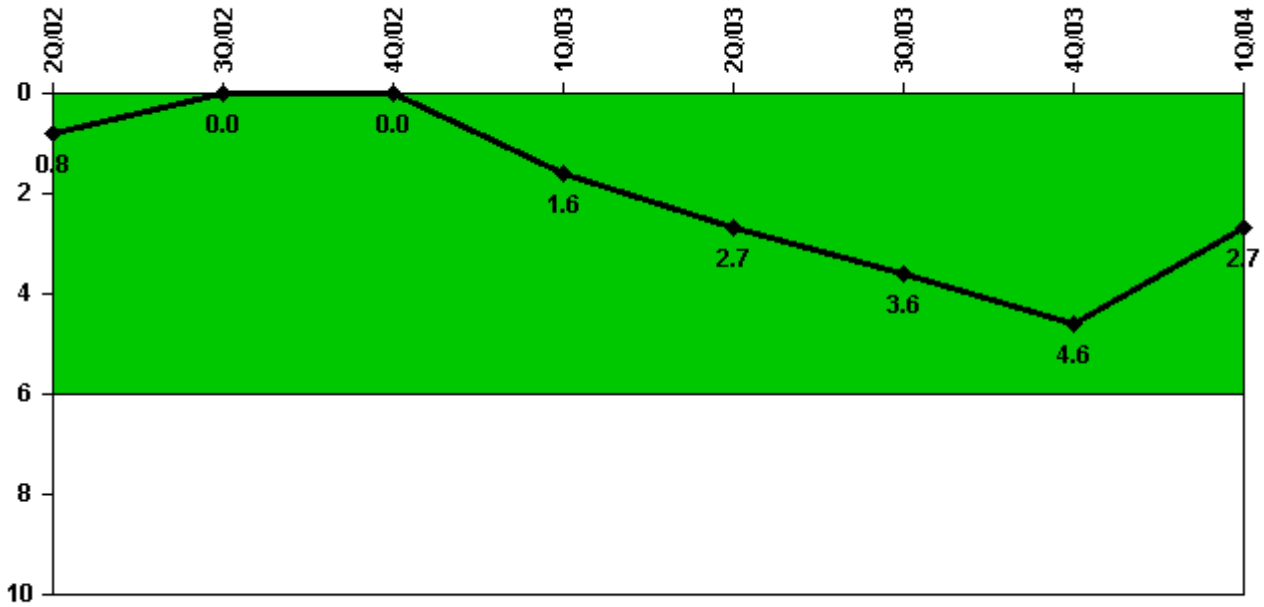
Thresholds: White > 2.0 Yellow > 10.0 Red > 20.0

Notes

Scrams with Loss of Normal Heat Removal	2Q/02	3Q/02	4Q/02	1Q/03	2Q/03	3Q/03	4Q/03	1Q/04
Scrams	0	0	0	0	0	0	0	0
Indicator value	0	0	0	0	0	0	0	0

Licensee Comments: none

Unplanned Power Changes per 7000 Critical Hrs



Thresholds: White > 6.0

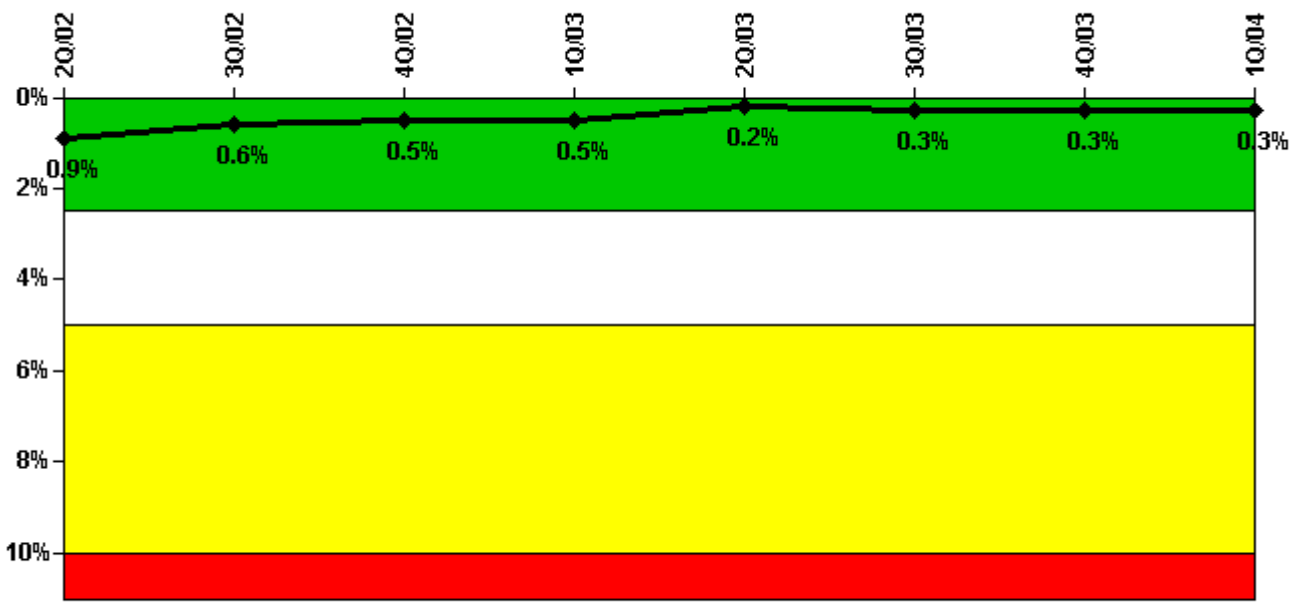
Notes

Unplanned Power Changes per 7000 Critical Hrs	2Q/02	3Q/02	4Q/02	1Q/03	2Q/03	3Q/03	4Q/03	1Q/04
Unplanned power changes	0	0	0	2.0	1.0	1.0	1.0	0
Critical hours	2183.0	2208.0	2209.0	1971.0	1519.0	2188.0	1984.0	2138.6
Indicator value	0.8	0	0	1.6	2.7	3.6	4.6	2.7

Licensee Comments:

1Q/04: Reflects unplanned power changes greater than 20% of licensed reactor power on 2/20/03, 3/3/03, 5/15/03, 9/16/03, and 12/1/03.

Safety System Unavailability, Emergency AC Power



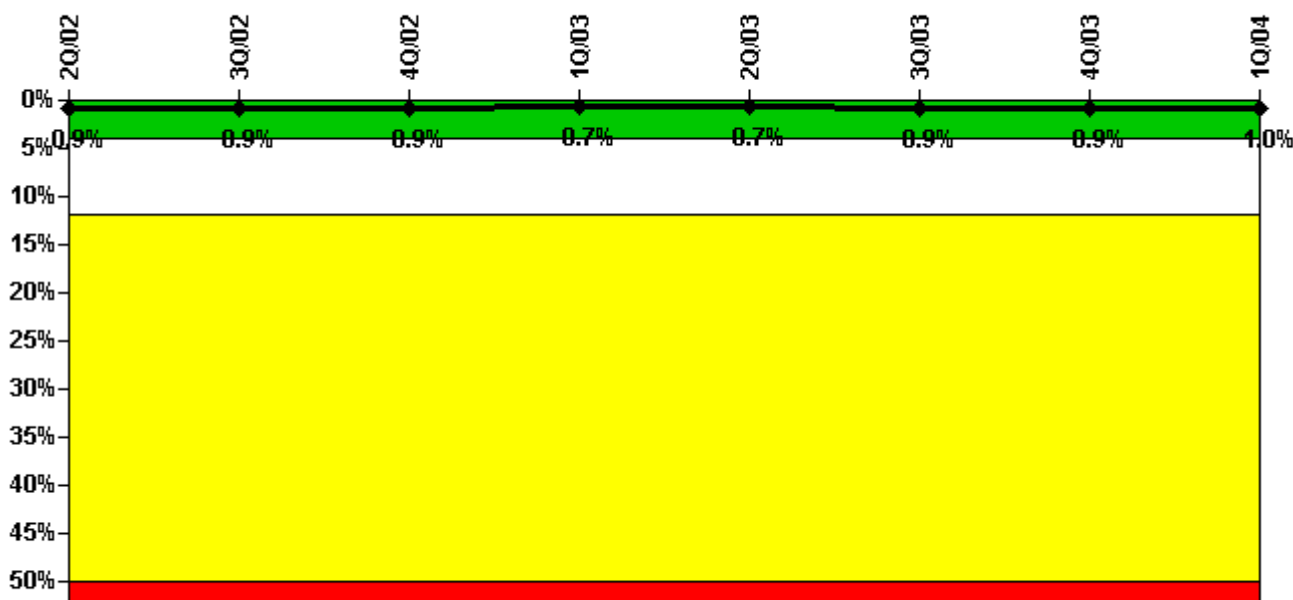
Thresholds: White > 2.5% Yellow > 5.0% Red > 10.0%

Notes

Safety System Unavailability, Emergency AC Power	2Q/02	3Q/02	4Q/02	1Q/03	2Q/03	3Q/03	4Q/03	1Q/04
Train 1								
Planned unavailable hours	3.55	1.83	1.53	1.01	1.58	1.58	11.34	5.60
Unplanned unavailable hours	4.00	4.70	0	0	0	21.08	0	1.50
Fault exposure hours	0	0	0	0	0	0	0	0
Effective Reset hours	0	0	0	0	0	0	0	0
Required hours	2183.00	2208.00	2209.00	2058.00	1570.00	2202.70	1983.00	2184.00
Train 2								
Planned unavailable hours	1.08	0.70	0.89	0.80	0.91	2.51	17.43	2.59
Unplanned unavailable hours	33.75	3.05	0	13.72	0	0.50	0	7.70
Fault exposure hours	0	0	0	0	0	0	0	0
Effective Reset hours	0	0	0	0	0	0	0	0
Required hours	2183.00	2208.00	2209.00	2058.00	1570.00	2202.70	1983.00	2184.00
Indicator value	0.9%	0.6%	0.5%	0.5%	0.2%	0.3%	0.3%	0.3%

Licensee Comments: none

Safety System Unavailability, High Pressure Injection System (HPCI)



Thresholds: White > 4.0% Yellow > 12.0% Red > 50.0%

Notes

Safety System Unavailability, High Pressure Injection System (HPCI)	2Q/02	3Q/02	4Q/02	1Q/03	2Q/03	3Q/03	4Q/03	1Q/04
Train 1								
Planned unavailable hours	12.90	18.62	3.62	0.35	11.15	4.97	0.90	45.52
Unplanned unavailable hours	0	0.50	0	0	0	101.43	0	0
Fault exposure hours	0	0	0	0	0	0	0	0
Effective Reset hours	0	0	0	0	0	0	0	0
Required hours	2183.00	2208.00	2209.00	2000.75	1590.54	2200.60	1980.00	2140.00
Indicator value	0.9%	0.9%	0.9%	0.7%	0.7%	0.9%	0.9%	1.0%

Licensee Comments: none

Safety System Unavailability, Heat Removal System (RCIC)



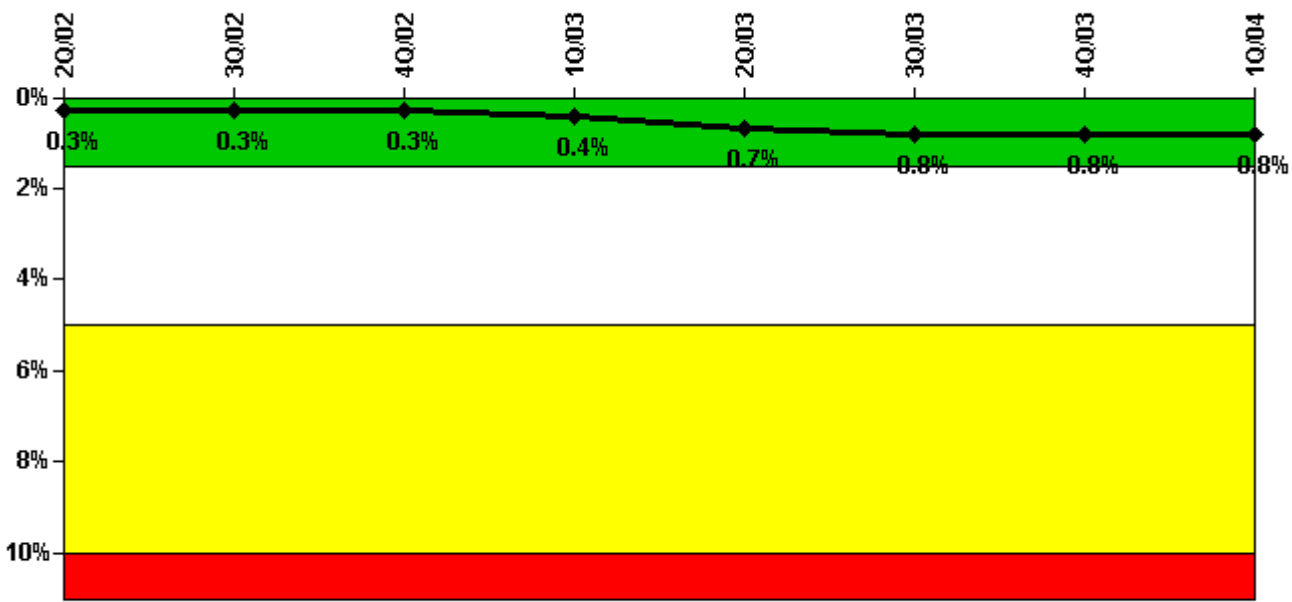
Thresholds: White > 4.0% Yellow > 12.0% Red > 50.0%

Notes

Safety System Unavailability, Heat Removal System (RCIC)	2Q/02	3Q/02	4Q/02	1Q/03	2Q/03	3Q/03	4Q/03	1Q/04
Train 1								
Planned unavailable hours	7.64	14.28	22.73	19.48	9.74	25.29	3.81	3.18
Unplanned unavailable hours	0	0	0	0	0	0	0	0
Fault exposure hours	0	0	0	0	0	0	0	0
Effective Reset hours	0	0	0	0	0	0	0	0
Required hours	2183.00	2208.00	2209.00	2000.75	1590.54	2200.60	1980.00	2140.00
Indicator value	0.8%	0.8%	0.8%	0.7%	0.8%	0.8%	0.7%	0.6%

Licensee Comments: none

Safety System Unavailability, Residual Heat Removal System



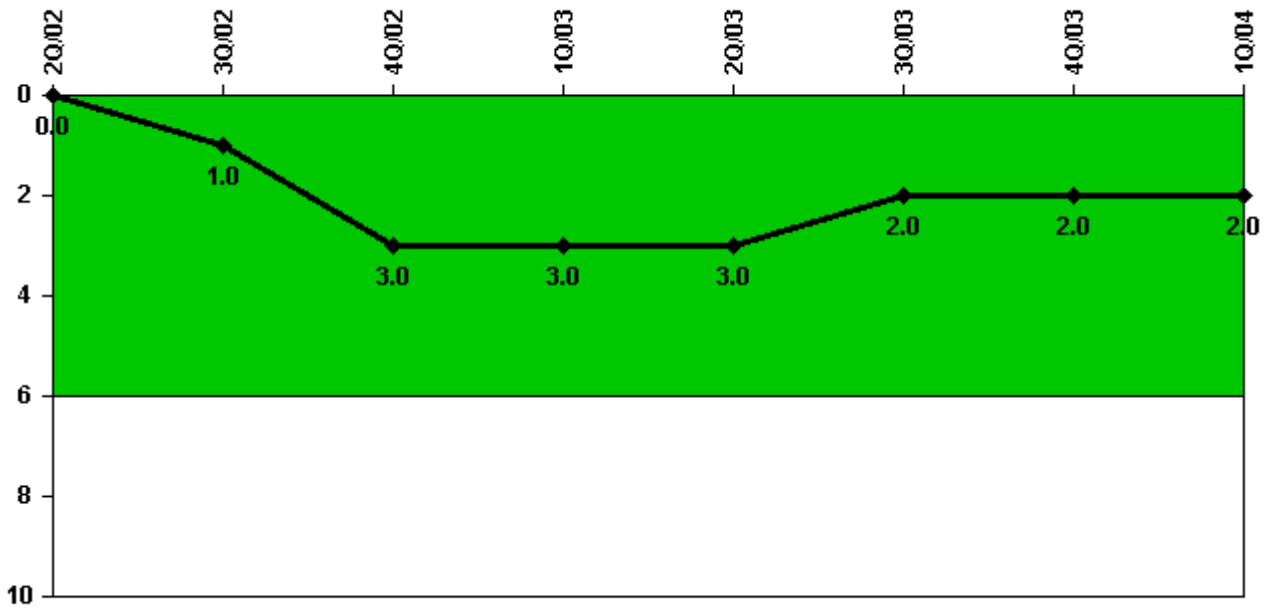
Thresholds: White > 1.5% Yellow > 5.0% Red > 10.0%

Notes

Safety System Unavailability, Residual Heat Removal System	2Q/02	3Q/02	4Q/02	1Q/03	2Q/03	3Q/03	4Q/03	1Q/04
Train 1								
Planned unavailable hours	2.48	0	3.00	0	109.45	19.93	24.35	1.50
Unplanned unavailable hours	0	0	0	59.20	0	42.29	0	0
Fault exposure hours	0	0	0	0	0	0	0	0
Effective Reset hours	0	0	0	0	0	0	0	0
Required hours	2183.00	2208.00	2209.00	2160.00	2183.00	2208.00	2209.00	2184.00
Train 2								
Planned unavailable hours	0	0.50	0	0	0	0	18.70	17.68
Unplanned unavailable hours	0	0	0	12.80	0	0	0	0
Fault exposure hours	0	0	0	0	0	0	0	0
Effective Reset hours	0	0	0	0	0	0	0	0
Required hours	2183.00	2208.00	2209.00	2160.00	2183.00	2208.00	2209.00	2184.00
Indicator value	0.3%	0.3%	0.3%	0.4%	0.7%	0.8%	0.8%	0.8%

Licensee Comments: none

Safety System Functional Failures (BWR)



Thresholds: White > 6.0

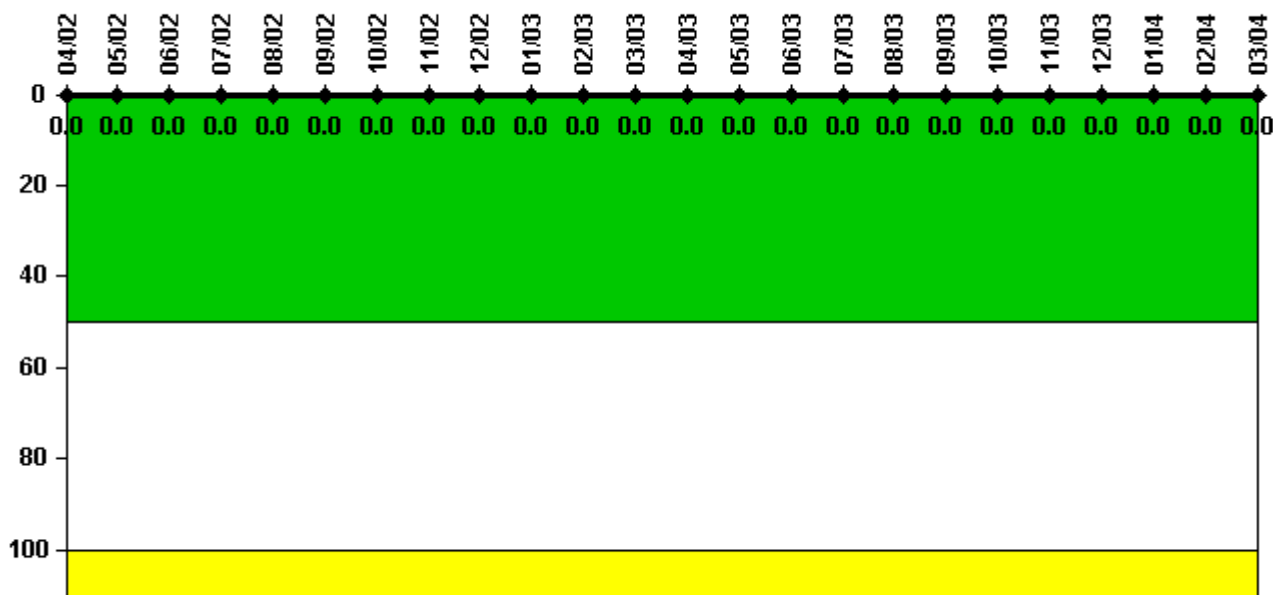
Notes

Safety System Functional Failures (BWR)	2Q/02	3Q/02	4Q/02	1Q/03	2Q/03	3Q/03	4Q/03	1Q/04
Safety System Functional Failures	0	1	2	0	0	0	2	0
Indicator value	0	1	3	3	3	2	2	2

Licensee Comments:

1Q/04: Reflects LER 2003-004-00 (HPCI) that was submitted on 10/27/03 and LER 2003-005-00 (HPCI and RCIC) that was submitted on 11/3/03.

Reactor Coolant System Activity



Thresholds: White > 50.0 Yellow > 100.0

Notes

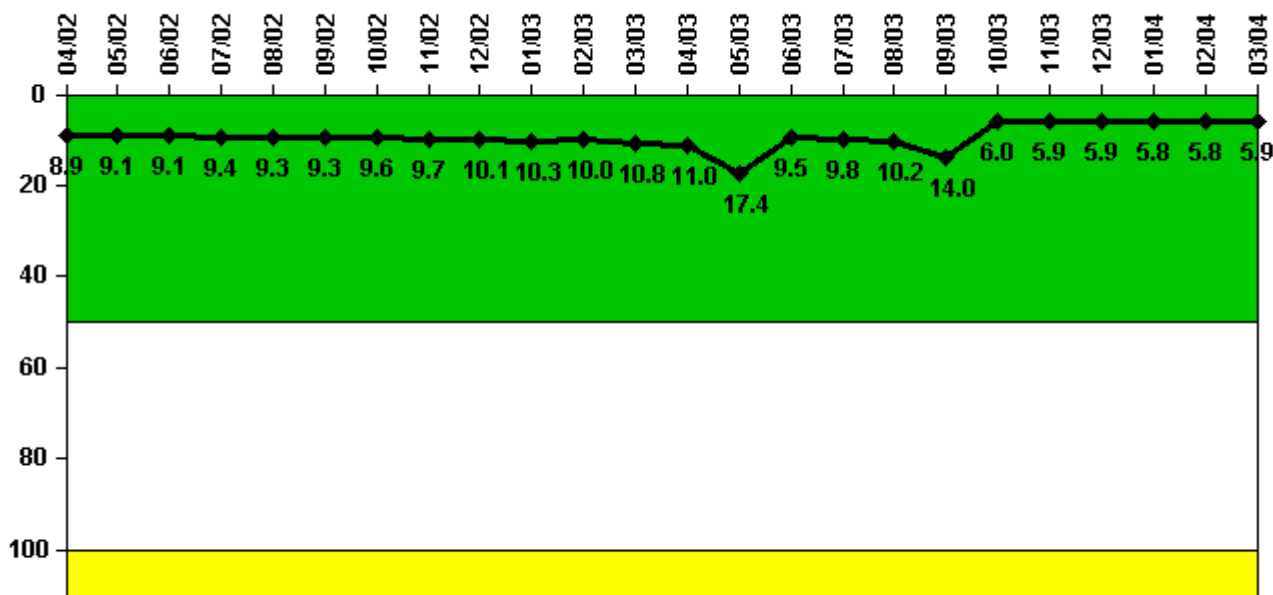
Reactor Coolant System Activity	4/02	5/02	6/02	7/02	8/02	9/02	10/02	11/02	12/02	1/03	2/03	3/03
Maximum activity	0.002360	0.002250	0.002360	0.002360	0.002930	0.002850	0.001780	0.002160	0.002900	0.004520	0.003160	0.003040
Technical specification limit	20.0	20.0	20.0	20.0	20.0	20.0	20.0	20.0	20.0	20.0	20.0	20.0
Indicator value	0	0	0	0	0	0	0	0	0	0	0	0

Reactor Coolant System Activity	4/03	5/03	6/03	7/03	8/03	9/03	10/03	11/03	12/03	1/04	2/04	3/04
Maximum activity	0.002970	0.002360	0.005000	0.005000	0.004350	0.003780	0.004690	0.004120	0.003900	0.003930	0.003840	0.003430
Technical specification limit	20.0	20.0	20.0	20.0	20.0	20.0	20.0	20.0	20.0	20.0	20.0	20.0
Indicator value	0	0	0	0	0	0	0	0	0	0	0	0

Licensee Comments:

3/04: Indicates reactor coolant system activity, depicted as a percentage of the Technical Specifications limit for Iodine. Technical Specifications do not specify the limit for Iodine-131.

Reactor Coolant System Leakage



Thresholds: White > 50.0 Yellow > 100.0

Notes

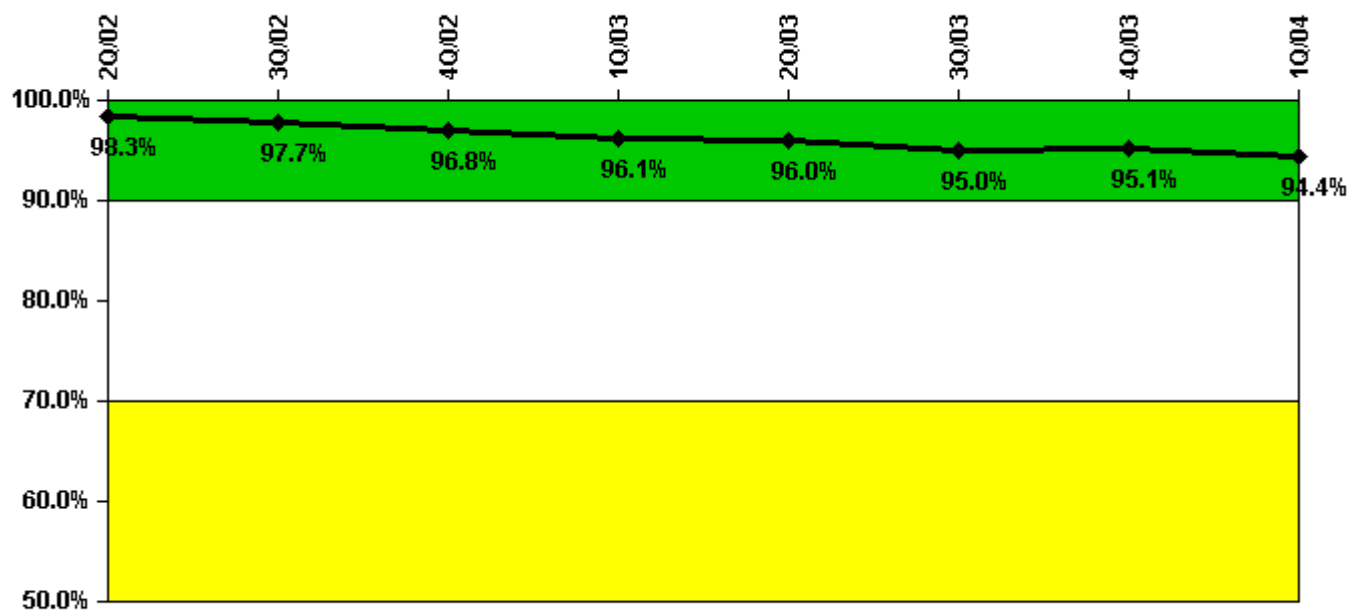
Reactor Coolant System Leakage	4/02	5/02	6/02	7/02	8/02	9/02	10/02	11/02	12/02	1/03	2/03	3/03
Maximum leakage	2.230	2.270	2.280	2.360	2.330	2.330	2.400	2.420	2.530	2.570	2.500	2.710
Technical specification limit	25.0	25.0	25.0	25.0	25.0	25.0	25.0	25.0	25.0	25.0	25.0	25.0
Indicator value	8.9	9.1	9.1	9.4	9.3	9.3	9.6	9.7	10.1	10.3	10.0	10.8

Reactor Coolant System Leakage	4/03	5/03	6/03	7/03	8/03	9/03	10/03	11/03	12/03	1/04	2/04	3/04
Maximum leakage	2.750	4.340	2.370	2.440	2.540	3.510	1.500	1.470	1.470	1.460	1.460	1.470
Technical specification limit	25.0	25.0	25.0	25.0	25.0	25.0	25.0	25.0	25.0	25.0	25.0	25.0
Indicator value	11.0	17.4	9.5	9.8	10.2	14.0	6.0	5.9	5.9	5.8	5.8	5.9

Licensee Comments:

3/04: Indicates maximum total leakage (identified plus unidentified) in gpm for each month, depicted as a percentage of the Technical Specifications limit. Technical Specifications specify un-identified and total leakage, does not specify identified leakage.

Drill/Exercise Performance



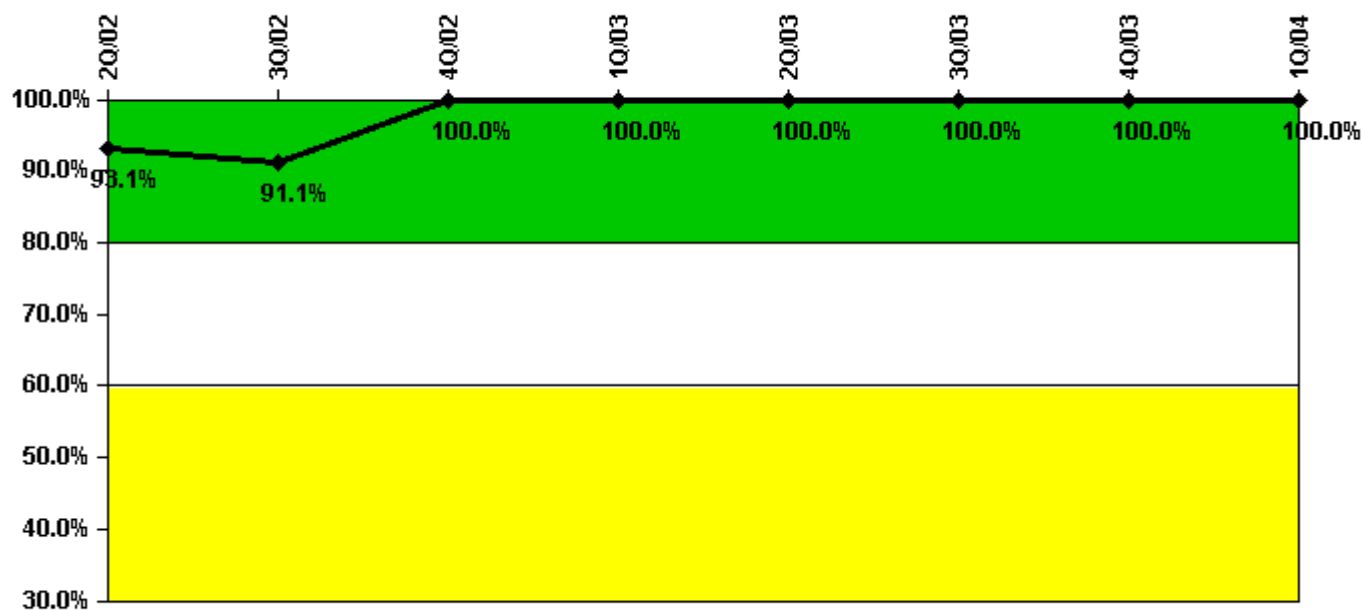
Thresholds: White < 90.0% Yellow < 70.0%

Notes

Drill/Exercise Performance	2Q/02	3Q/02	4Q/02	1Q/03	2Q/03	3Q/03	4Q/03	1Q/04
Successful opportunities	26.0	54.0	22.0	15.0	21.0	56.0	24.0	36.0
Total opportunities	26.0	56.0	24.0	17.0	22.0	60.0	24.0	40.0
Indicator value	98.3%	97.7%	96.8%	96.1%	96.0%	95.0%	95.1%	94.4%

Licensee Comments: none

ERO Drill Participation



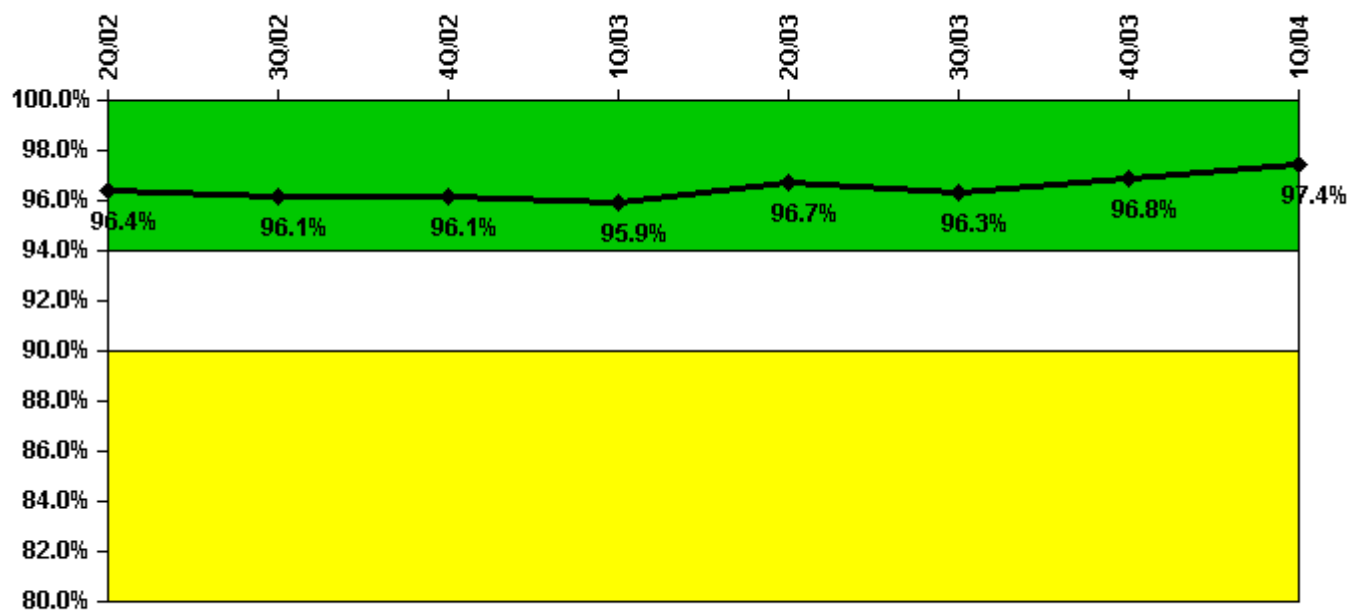
Thresholds: White < 80.0% Yellow < 60.0%

Notes

ERO Drill Participation	2Q/02	3Q/02	4Q/02	1Q/03	2Q/03	3Q/03	4Q/03	1Q/04
Participating Key personnel	54.0	51.0	58.0	57.0	56.0	55.0	55.0	59.0
Total Key personnel	58.0	56.0	58.0	57.0	56.0	55.0	55.0	59.0
Indicator value	93.1%	91.1%	100.0%	100.0%	100.0%	100.0%	100.0%	100.0%

Licensee Comments: none

Alert & Notification System



Thresholds: White < 94.0% Yellow < 90.0%

Notes

Alert & Notification System	2Q/02	3Q/02	4Q/02	1Q/03	2Q/03	3Q/03	4Q/03	1Q/04
Successful siren-tests	313	432	330	321	325	291	472	330
Total sirens-tests	336	448	336	336	336	307	477	336
Indicator value	96.4%	96.1%	96.1%	95.9%	96.7%	96.3%	96.8%	97.4%

Licensee Comments: none

Occupational Exposure Control Effectiveness



Thresholds: White > 2.0 Yellow > 5.0

Notes

Occupational Exposure Control Effectiveness	2Q/02	3Q/02	4Q/02	1Q/03	2Q/03	3Q/03	4Q/03	1Q/04
High radiation area occurrences	0	0	0	0	0	0	0	0
Very high radiation area occurrences	0	0	0	0	0	0	0	0
Unintended exposure occurrences	0	0	0	0	0	0	0	0
Indicator value	0	0	0	0	0	0	0	0

Licensee Comments: none

RETS/ODCM Radiological Effluent



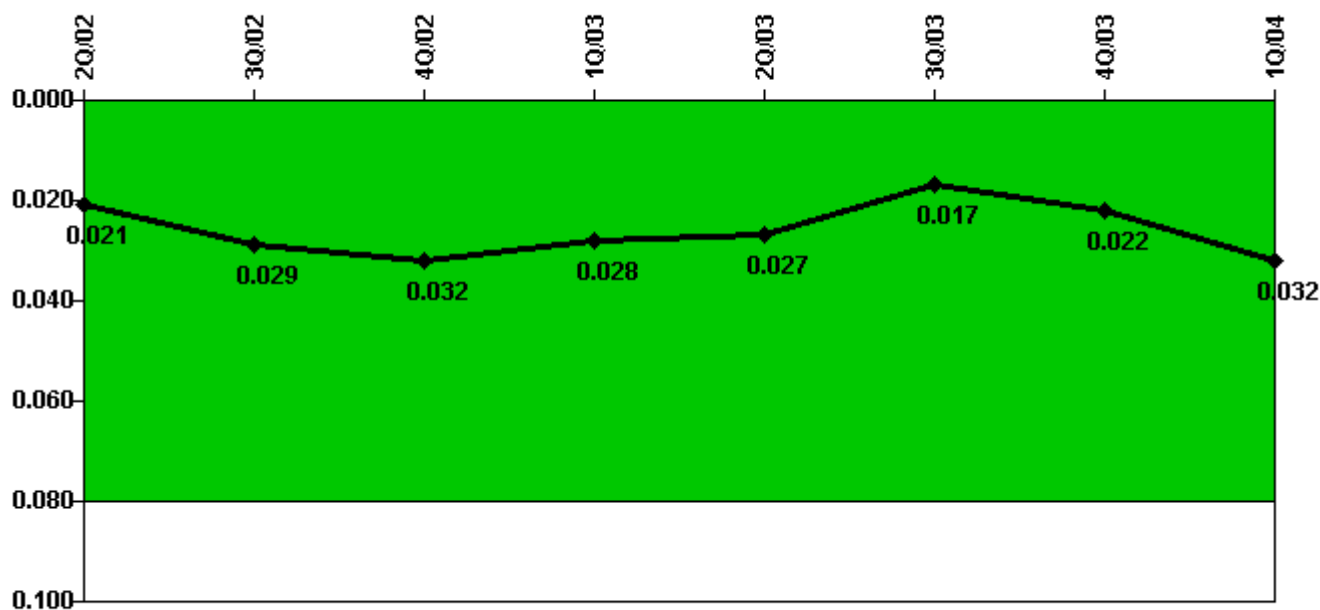
Thresholds: White > 1.0 Yellow > 3.0

Notes

RETS/ODCM Radiological Effluent	2Q/02	3Q/02	4Q/02	1Q/03	2Q/03	3Q/03	4Q/03	1Q/04
RETS/ODCM occurrences	0	0	0	0	0	0	0	0
Indicator value	0	0	0	0	0	0	0	0

Licensee Comments: none

Protected Area Security Performance Index



Thresholds: White > 0.080

Notes

Protected Area Security Performance Index	2Q/02	3Q/02	4Q/02	1Q/03	2Q/03	3Q/03	4Q/03	1Q/04
IDS compensatory hours	137.20	82.40	42.20	75.80	44.10	140.80	153.60	127.13
CCTV compensatory hours	31.8	250.3	45.9	0.6	67.3	38.4	85.5	154.2
IDS normalization factor	2.15	2.15	2.15	2.15	2.15	2.15	2.15	2.15
CCTV normalization factor	1.0	1.0	1.0	1.0	1.0	1.0	1.0	1.0
Index Value	0.021	0.029	0.032	0.028	0.027	0.017	0.022	0.032

Licensee Comments: none

Personnel Screening Program



Thresholds: White > 2.0 Yellow > 5.0

Notes

Personnel Screening Program	2Q/02	3Q/02	4Q/02	1Q/03	2Q/03	3Q/03	4Q/03	1Q/04
Program failures	0	0	0	0	0	0	0	0
Indicator value	0	0	0	0	0	0	0	0

Licensee Comments: none

FFD/Personnel Reliability



Thresholds: White > 2.0 Yellow > 5.0

Notes

FFD/Personnel Reliability	2Q/02	3Q/02	4Q/02	1Q/03	2Q/03	3Q/03	4Q/03	1Q/04
Program Failures	0	0	0	0	0	0	0	0
Indicator value	0	0	0	0	0	0	0	0

Licensee Comments: none

▲ [PI Summary](#) | [Inspection Findings Summary](#) | [Reactor Oversight Process](#)

Last Modified: April 22, 2004