

Perry 1

1Q/2004 Performance Indicators

Licensee's General Comments: none

Unplanned Scrams per 7000 Critical Hrs



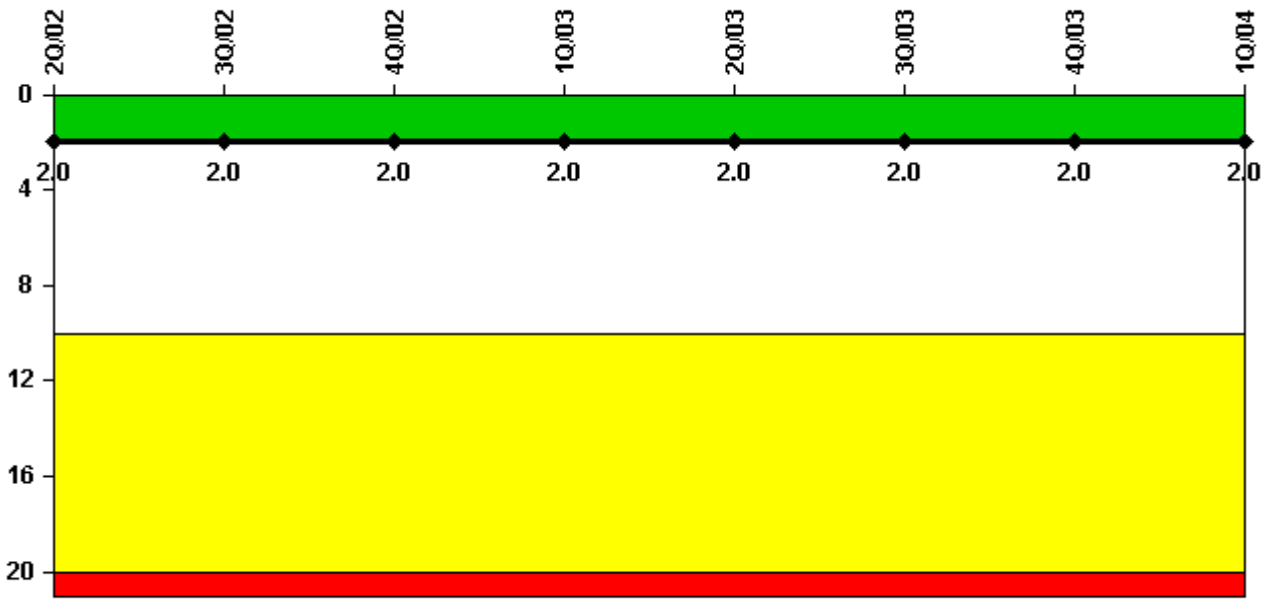
Thresholds: White > 3.0 Yellow > 6.0 Red > 25.0

Notes

Unplanned Scrams per 7000 Critical Hrs	2Q/02	3Q/02	4Q/02	1Q/03	2Q/03	3Q/03	4Q/03	1Q/04
Unplanned scrams	0	1.0	0	0	0	1.0	0	0
Critical hours	2026.0	1993.7	2138.6	2160.0	900.6	2071.6	2209.0	2184.0
Indicator value	1.7	1.7	0.8	0.8	1.0	1.0	1.0	1.0

Licensee Comments: none

Scrams with Loss of Normal Heat Removal



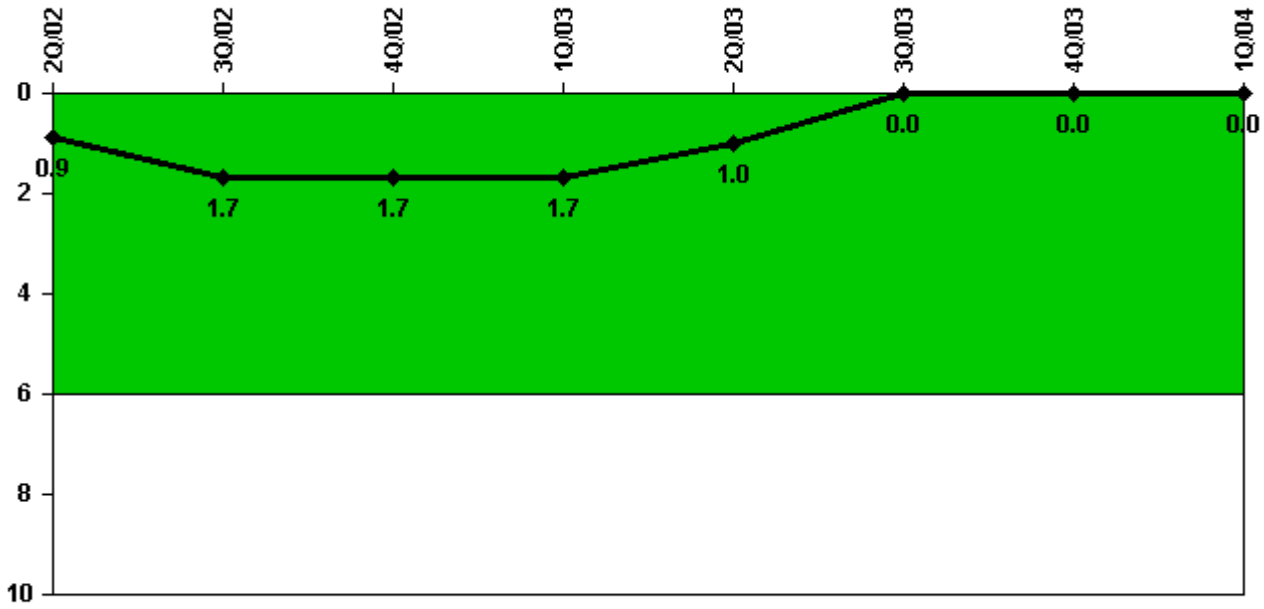
Thresholds: White > 2.0 Yellow > 10.0 Red > 20.0

Notes

Scrams with Loss of Normal Heat Removal	2Q/02	3Q/02	4Q/02	1Q/03	2Q/03	3Q/03	4Q/03	1Q/04
Scrams	0	0	0	0	0	0	0	0
Indicator value	2.0	2.0	2.0	2.0	2.0	2.0	2.0	2.0

Licensee Comments: none

Unplanned Power Changes per 7000 Critical Hrs



Thresholds: White > 6.0

Notes

Unplanned Power Changes per 7000 Critical Hrs	2Q/02	3Q/02	4Q/02	1Q/03	2Q/03	3Q/03	4Q/03	1Q/04
Unplanned power changes	1.0	1.0	0	0	0	0	0	0
Critical hours	2026.0	1993.7	2138.6	2160.0	900.6	2071.6	2209.0	2184.0
Indicator value	0.9	1.7	1.7	1.7	1.0	0	0	0

Licensee Comments: none

Safety System Unavailability, Emergency AC Power, >2EDG



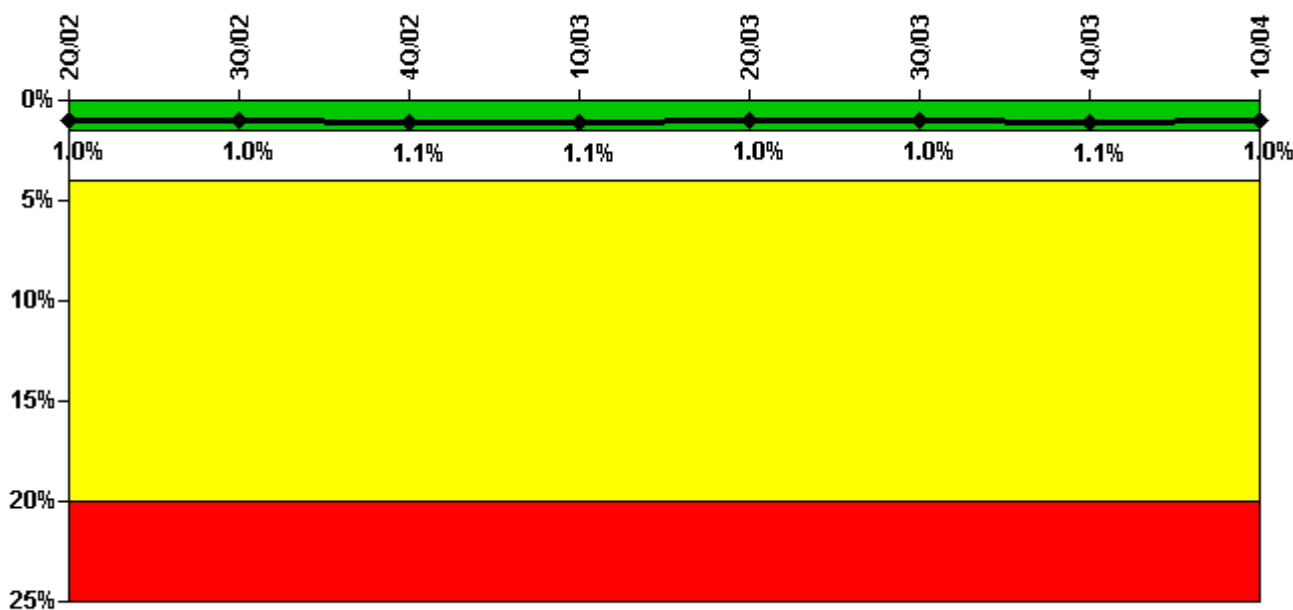
Thresholds: White > 2.5% Yellow > 10.0% Red > 20.0%

Notes

Safety System Unavailability, Emergency AC Power, >2EDG	2Q/02	3Q/02	4Q/02	1Q/03	2Q/03	3Q/03	4Q/03	1Q/04
Train 1								
Planned unavailable hours	58.03	5.80	5.05	23.02	2.47	6.71	36.21	20.15
Unplanned unavailable hours	0	0	0	0	0	96.17	0	0
Fault exposure hours	0	0	0	0	0	0	0	0
Effective Reset hours	0	0	0	0	0	0	0	0
Required hours	2183.00	2208.00	2209.00	2160.00	2183.00	2208.00	2209.00	2184.00
Train 2								
Planned unavailable hours	20.78	4.69	23.47	6.13	3.84	38.04	9.98	8.57
Unplanned unavailable hours	0	65.71	45.82	0.17	0	44.07	0	0
Fault exposure hours	0	0	0	0	0	0	0	0
Effective Reset hours	0	0	0	0	0	0	0	0
Required hours	2183.00	2208.00	2209.00	2160.00	2183.00	2208.00	2209.00	2184.00
Train 3								
Planned unavailable hours	1.26	1.55	12.30	30.38	3.65	2.77	29.87	1.33
Unplanned unavailable hours	0	0	0	0	0	0	0	0
Fault exposure hours	0	0	0	0	0	0	0	0
Effective Reset hours	0	0	0	0	0	0	0	0
Required hours	2183.00	2208.00	2209.00	2160.00	2183.00	2208.00	2209.00	2184.00
Indicator value	1.2%	1.3%	1.2%	1.2%	1.1%	1.2%	1.1%	1.1%

Licensee Comments: none

Safety System Unavailability, High Pressure Injection System (HPCS)



Thresholds: White > 1.5% Yellow > 4.0% Red > 20.0%

Notes

Safety System Unavailability, High Pressure Injection System (HPCS)	2Q/02	3Q/02	4Q/02	1Q/03	2Q/03	3Q/03	4Q/03	1Q/04
Train 1								
Planned unavailable hours	97.85	4.12	1.20	16.83	2.22	3.45	25.14	0.85
Unplanned unavailable hours	0	0	7.73	0	0	0	0	0
Fault exposure hours	0	0	0	0	0	0	0	0
Effective Reset hours	0	0	0	0	0	0	0	0
Required hours	2026.00	1993.68	2138.60	2160.00	900.60	2071.60	2209.00	2184.00
Indicator value	1.0%	1.0%	1.1%	1.1%	1.0%	1.0%	1.1%	1.0%

Licensee Comments: none

Safety System Unavailability, Heat Removal System (RCIC)



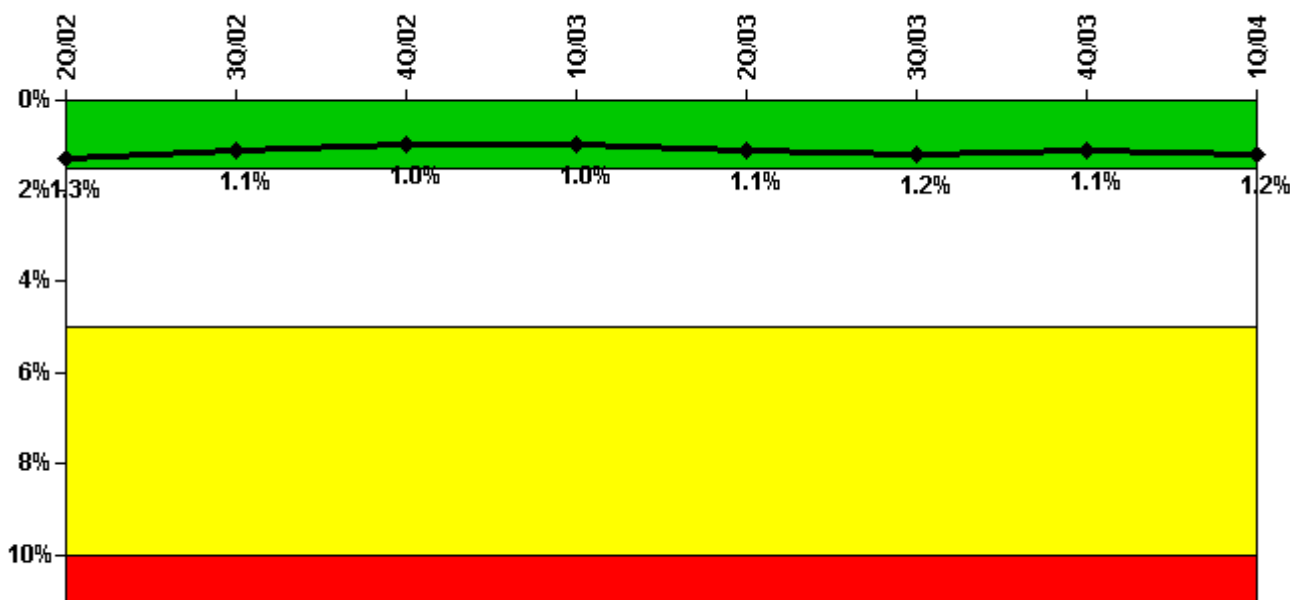
Thresholds: White > 4.0% Yellow > 12.0% Red > 50.0%

Notes

Safety System Unavailability, Heat Removal System (RCIC)	2Q/02	3Q/02	4Q/02	1Q/03	2Q/03	3Q/03	4Q/03	1Q/04
Train 1								
Planned unavailable hours	68.58	3.20	19.29	33.05	34.05	60.61	53.76	21.65
Unplanned unavailable hours	0	0	0	0	0	119.05	0	0
Fault exposure hours	0	0	0	0	0	0	0	0
Effective Reset hours	0	0	0	0	0	0	0	0
Required hours	2026.00	1993.68	2138.60	2160.00	900.60	2071.60	2209.00	2184.00
Indicator value	2.5%	2.2%	2.3%	2.1%	2.2%	2.8%	2.9%	2.7%

Licensee Comments: none

Safety System Unavailability, Residual Heat Removal System



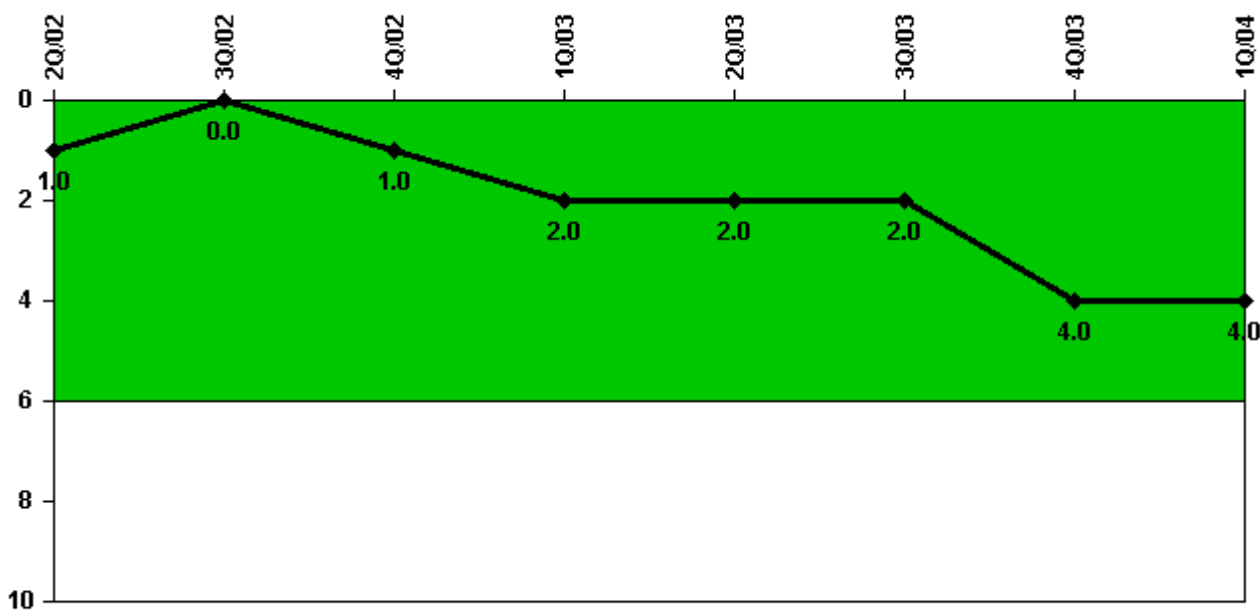
Thresholds: White > 1.5% Yellow > 5.0% Red > 10.0%

Notes

Safety System Unavailability, Residual Heat Removal System	2Q/02	3Q/02	4Q/02	1Q/03	2Q/03	3Q/03	4Q/03	1Q/04
Train 1								
Planned unavailable hours	77.22	3.24	0	37.72	30.08	5.98	50.79	19.50
Unplanned unavailable hours	0	17.63	0	0	0	116.59	0	0
Fault exposure hours	0	0	0	0	0	0	0	0
Effective Reset hours	0	0	0	0	0	0	0	0
Required hours	2183.00	2208.00	2209.00	2160.00	2183.00	2208.00	2209.00	2184.00
Train 2								
Planned unavailable hours	0	0.55	75.35	3.59	0.43	32.21	0.92	0.35
Unplanned unavailable hours	0	0	0	0.17	0	0.07	0	0
Fault exposure hours	0	0	0	0	0	0	0	0
Effective Reset hours	0	0	0	0	0	0	0	0
Required hours	2183.00	2208.00	2209.00	2160.00	2183.00	2208.00	2209.00	2184.00
Indicator value	1.3%	1.1%	1.0%	1.0%	1.1%	1.2%	1.1%	1.2%

Licensee Comments: none

Safety System Functional Failures (BWR)



Thresholds: White > 6.0

Notes

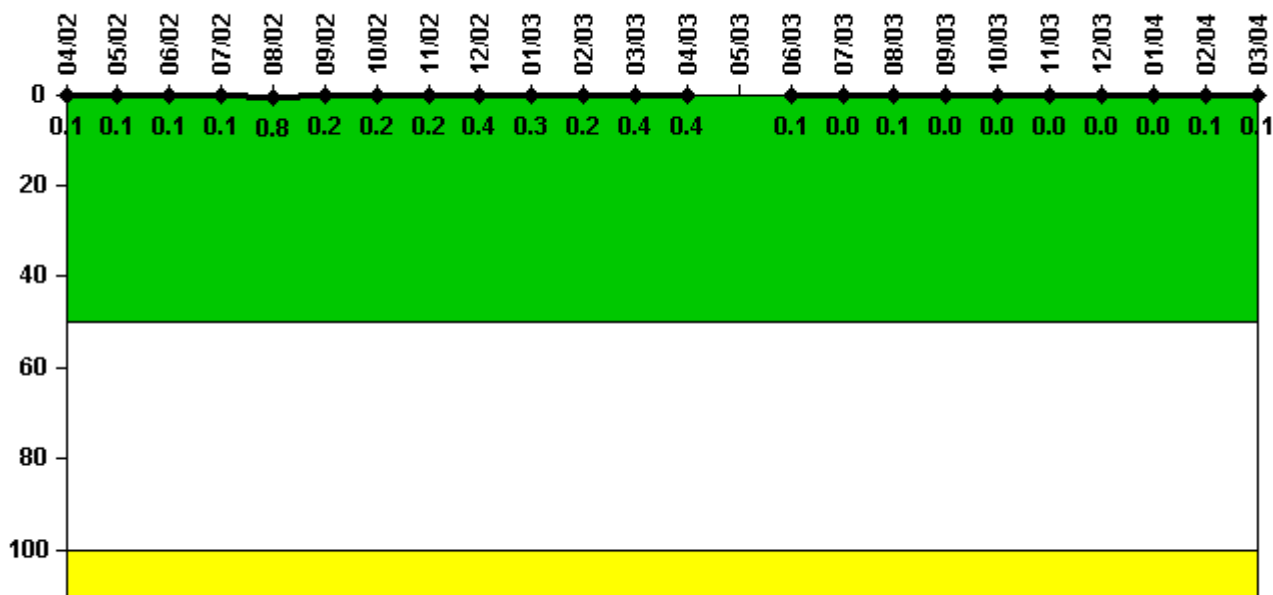
Safety System Functional Failures (BWR)	2Q/02	3Q/02	4Q/02	1Q/03	2Q/03	3Q/03	4Q/03	1Q/04
Safety System Functional Failures	0	0	1	1	0	0	3	1
Indicator value	1	0	1	2	2	2	4	4

Licensee Comments:

1Q/04: Data Correction: The data submitted for Q4 2003 has been corrected to reflect three SSFFs rather than two. The event reported in LER 2003-005 should have counted two SSFFs instead of one because the system was returned to operability before the condition was corrected. This change does not affect the indicator color.

4Q/03: Feb 2004: Data corrected to reflect 2 failures for the event reported in LER 2003-005 rather than 1, because the system was restored to operability before the condition had been corrected. This change results in 3 SSFFs for Q4/2003 rather than 2.

Reactor Coolant System Activity



Thresholds: White > 50.0 Yellow > 100.0

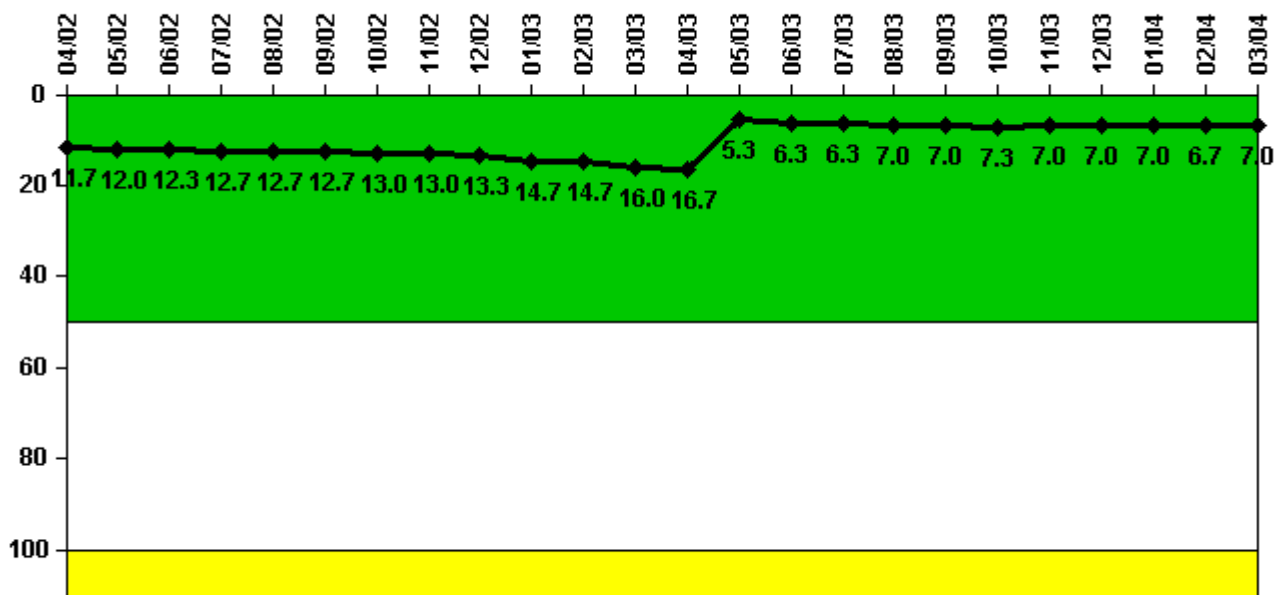
Notes

Reactor Coolant System Activity	4/02	5/02	6/02	7/02	8/02	9/02	10/02	11/02	12/02	1/03	2/03	3/03
Maximum activity	0.000218	0.000241	0.000155	0.000158	0.001530	0.000397	0.000460	0.000438	0.000823	0.000525	0.000497	0.000766
Technical specification limit	0.2	0.2	0.2	0.2	0.2	0.2	0.2	0.2	0.2	0.2	0.2	0.2
Indicator value	0.1	0.1	0.1	0.1	0.8	0.2	0.2	0.2	0.4	0.3	0.2	0.4

Reactor Coolant System Activity	4/03	5/03	6/03	7/03	8/03	9/03	10/03	11/03	12/03	1/04	2/04	3/04
Maximum activity	0.000734	N/A	0.000109	0.000090	0.000124	0.000067	0.000059	0.000066	0.000087	0.000073	0.000112	0.000109
Technical specification limit	0.2	0.2	0.2	0.2	0.2	0.2	0.2	0.2	0.2	0.2	0.2	0.2
Indicator value	0.4	N/A	0.1	0	0.1	0	0	0	0	0	0.1	0.1

Licensee Comments: none

Reactor Coolant System Leakage



Thresholds: White > 50.0 Yellow > 100.0

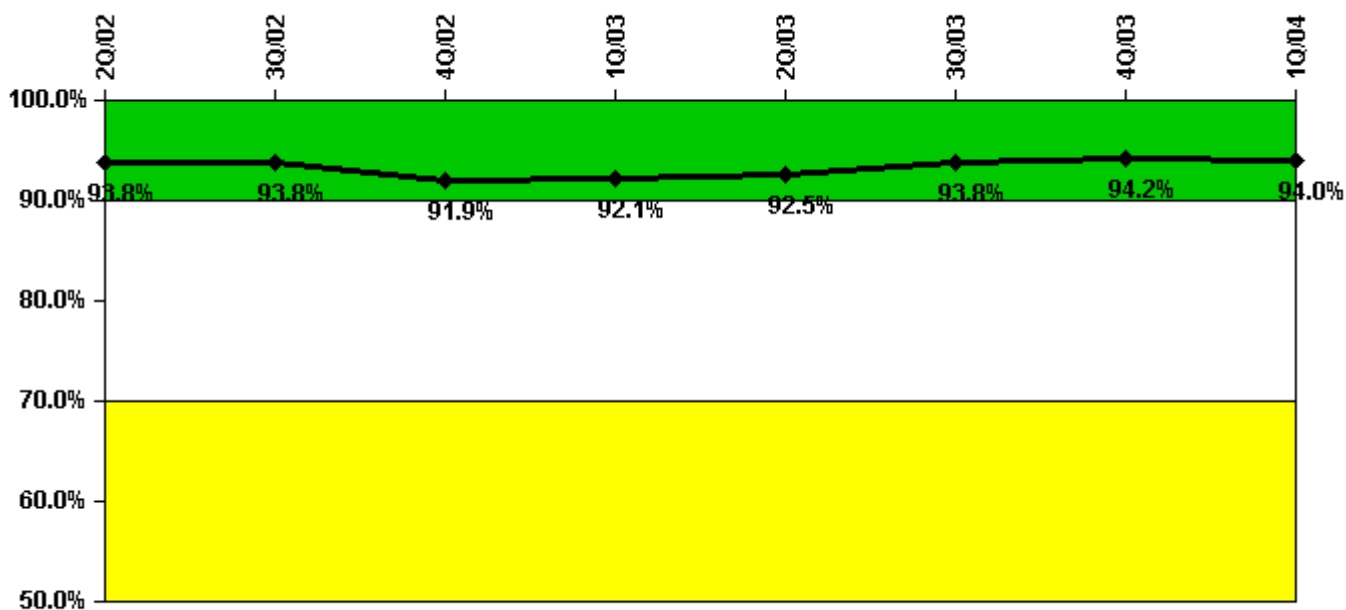
Notes

Reactor Coolant System Leakage	4/02	5/02	6/02	7/02	8/02	9/02	10/02	11/02	12/02	1/03	2/03	3/03
Maximum leakage	3.500	3.600	3.700	3.800	3.800	3.800	3.900	3.900	4.000	4.400	4.400	4.800
Technical specification limit	30.0	30.0	30.0	30.0	30.0	30.0	30.0	30.0	30.0	30.0	30.0	30.0
Indicator value	11.7	12.0	12.3	12.7	12.7	12.7	13.0	13.0	13.3	14.7	14.7	16.0

Reactor Coolant System Leakage	4/03	5/03	6/03	7/03	8/03	9/03	10/03	11/03	12/03	1/04	2/04	3/04
Maximum leakage	5.000	1.600	1.900	1.900	2.100	2.100	2.200	2.100	2.100	2.100	2.000	2.100
Technical specification limit	30.0	30.0	30.0	30.0	30.0	30.0	30.0	30.0	30.0	30.0	30.0	30.0
Indicator value	16.7	5.3	6.3	6.3	7.0	7.0	7.3	7.0	7.0	7.0	6.7	7.0

Licensee Comments: none

Drill/Exercise Performance



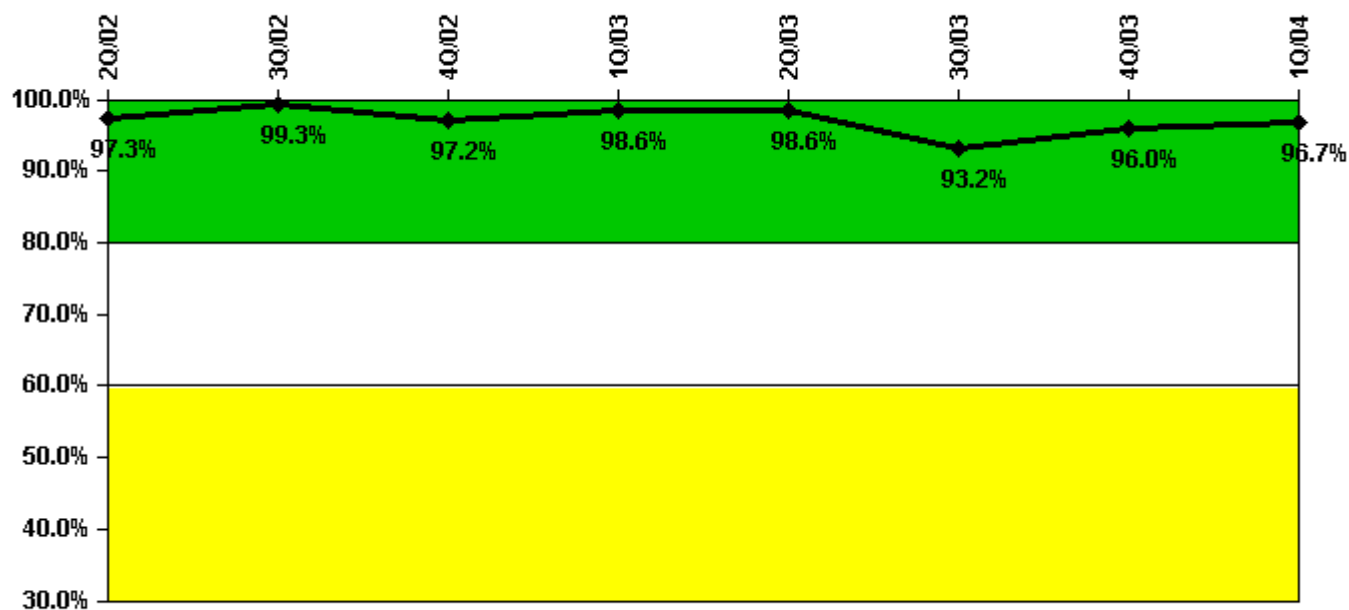
Thresholds: White < 90.0% Yellow < 70.0%

Notes

Drill/Exercise Performance	2Q/02	3Q/02	4Q/02	1Q/03	2Q/03	3Q/03	4Q/03	1Q/04
Successful opportunities	39.0	16.0	21.0	17.0	10.0	2.0	38.0	14.0
Total opportunities	42.0	18.0	24.0	18.0	11.0	2.0	38.0	14.0
Indicator value	93.8%	93.8%	91.9%	92.1%	92.5%	93.8%	94.2%	94.0%

Licensee Comments: none

ERO Drill Participation



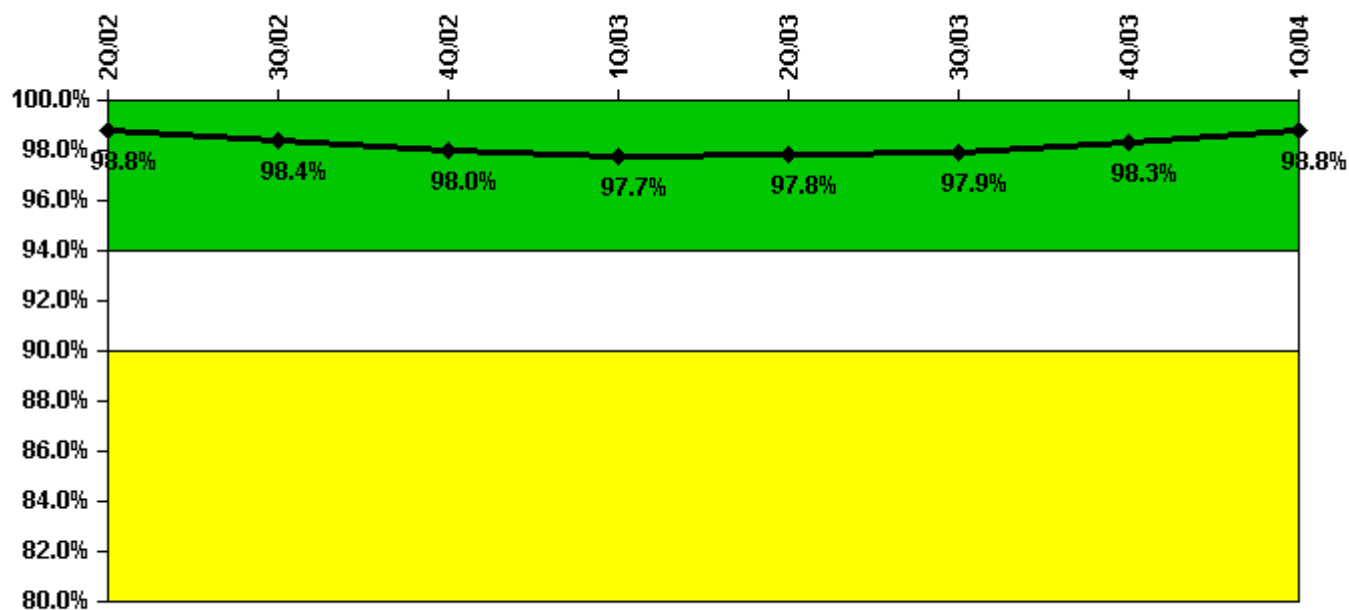
Thresholds: White < 80.0% Yellow < 60.0%

Notes

ERO Drill Participation	2Q/02	3Q/02	4Q/02	1Q/03	2Q/03	3Q/03	4Q/03	1Q/04
Participating Key personnel	144.0	144.0	140.0	144.0	137.0	137.0	144.0	146.0
Total Key personnel	148.0	145.0	144.0	146.0	139.0	147.0	150.0	151.0
Indicator value	97.3%	99.3%	97.2%	98.6%	98.6%	93.2%	96.0%	96.7%

Licensee Comments: none

Alert & Notification System



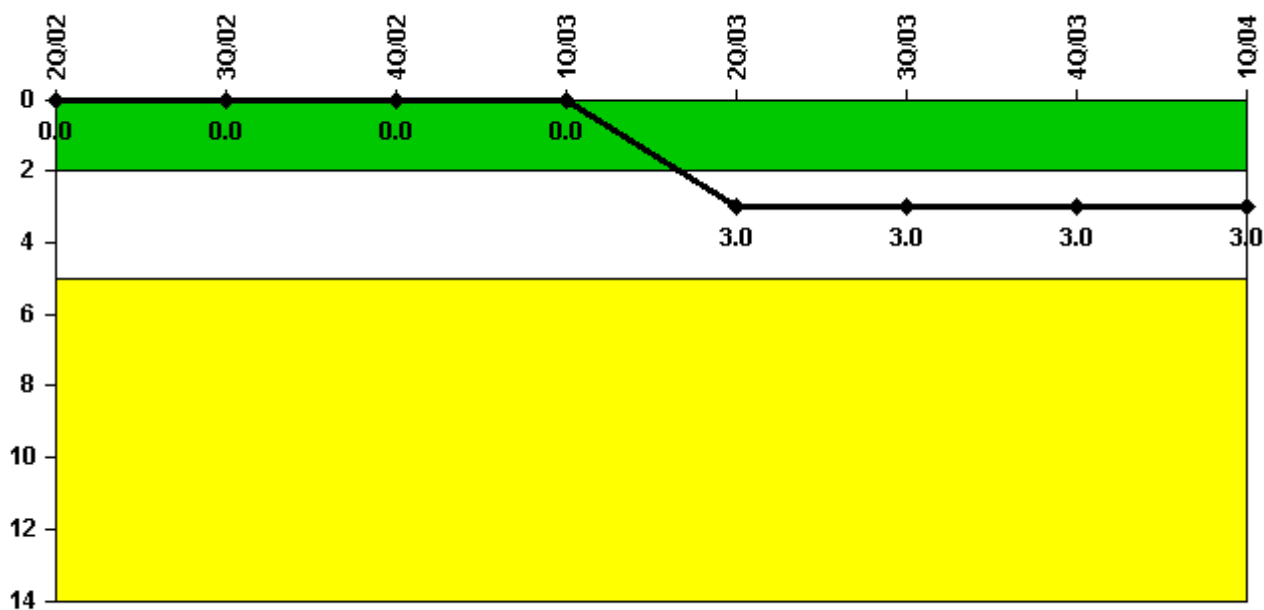
Thresholds: White < 94.0% Yellow < 90.0%

Notes

Alert & Notification System	2Q/02	3Q/02	4Q/02	1Q/03	2Q/03	3Q/03	4Q/03	1Q/04
Successful siren-tests	519	596	445	594	520	525	452	530
Total sirens-tests	532	608	456	608	532	532	456	532
Indicator value	98.8%	98.4%	98.0%	97.7%	97.8%	97.9%	98.3%	98.8%

Licensee Comments: none

Occupational Exposure Control Effectiveness



Thresholds: White > 2.0 Yellow > 5.0

Notes

Occupational Exposure Control Effectiveness	2Q/02	3Q/02	4Q/02	1Q/03	2Q/03	3Q/03	4Q/03	1Q/04
High radiation area occurrences	0	0	0	0	1	0	0	0
Very high radiation area occurrences	0	0	0	0	0	0	0	0
Unintended exposure occurrences	0	0	0	0	2	0	0	0
Indicator value	0	0	0	0	3	3	3	3

Licensee Comments: none

RETS/ODCM Radiological Effluent



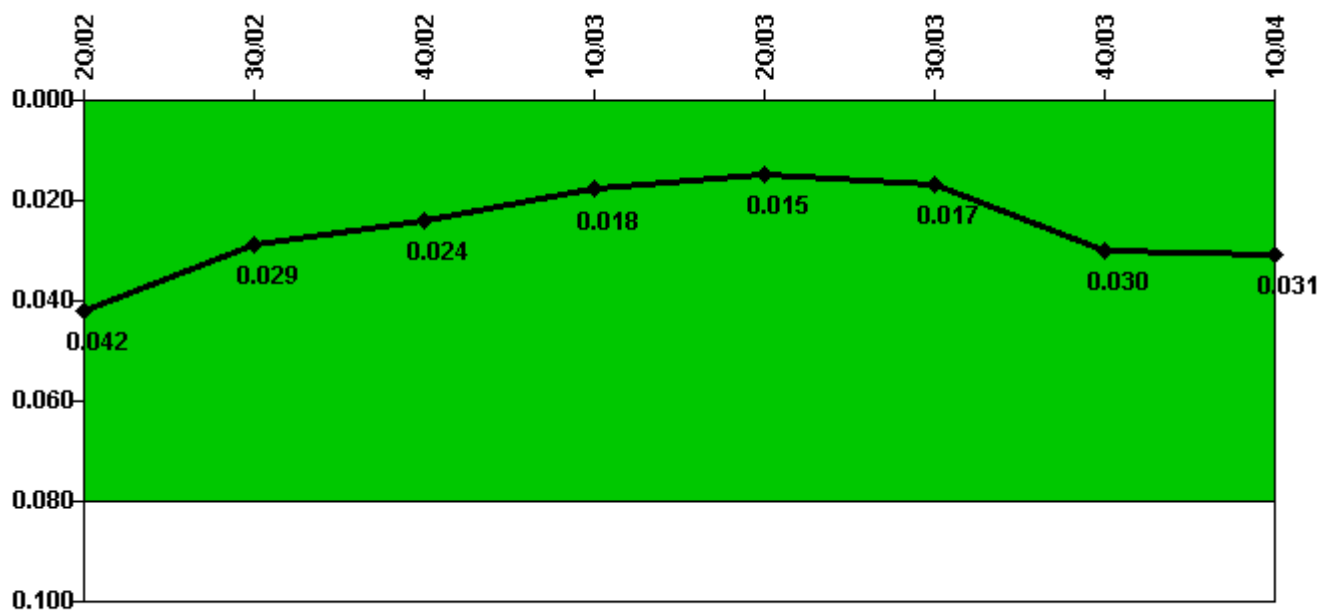
Thresholds: White > 1.0 Yellow > 3.0

Notes

RETS/ODCM Radiological Effluent	2Q/02	3Q/02	4Q/02	1Q/03	2Q/03	3Q/03	4Q/03	1Q/04
RETS/ODCM occurrences	0	0	0	0	0	0	0	0
Indicator value	0	0	0	0	0	0	0	0

Licensee Comments: none

Protected Area Security Performance Index



Thresholds: White > 0.080

Notes

Protected Area Security Performance Index	2Q/02	3Q/02	4Q/02	1Q/03	2Q/03	3Q/03	4Q/03	1Q/04
IDS compensatory hours	219.40	18.50	12.40	49.50	165.70	64.60	216.70	72.90
CCTV compensatory hours	12.7	26.9	4.4	5.2	1.0	18.8	52.1	1.4
IDS normalization factor	1.10	1.10	1.10	1.10	1.10	1.10	1.10	1.10
CCTV normalization factor	1.0	1.0	1.0	1.0	1.0	1.0	1.0	1.0
Index Value	0.042	0.029	0.024	0.018	0.015	0.017	0.030	0.031

Licensee Comments: none

Personnel Screening Program



Thresholds: White > 2.0 Yellow > 5.0

Notes

Personnel Screening Program	2Q/02	3Q/02	4Q/02	1Q/03	2Q/03	3Q/03	4Q/03	1Q/04
Program failures	0	0	0	0	0	0	0	0
Indicator value	0	0	0	0	0	0	0	0

Licensee Comments: none

FFD/Personnel Reliability



Thresholds: White > 2.0 Yellow > 5.0

Notes

FFD/Personnel Reliability	2Q/02	3Q/02	4Q/02	1Q/03	2Q/03	3Q/03	4Q/03	1Q/04
Program Failures	0	0	0	0	0	0	0	0
Indicator value	0	0	0	0	0	0	0	0

Licensee Comments: none

▲ [PI Summary](#) | [Inspection Findings Summary](#) | [Reactor Oversight Process](#)

Last Modified: April 22, 2004