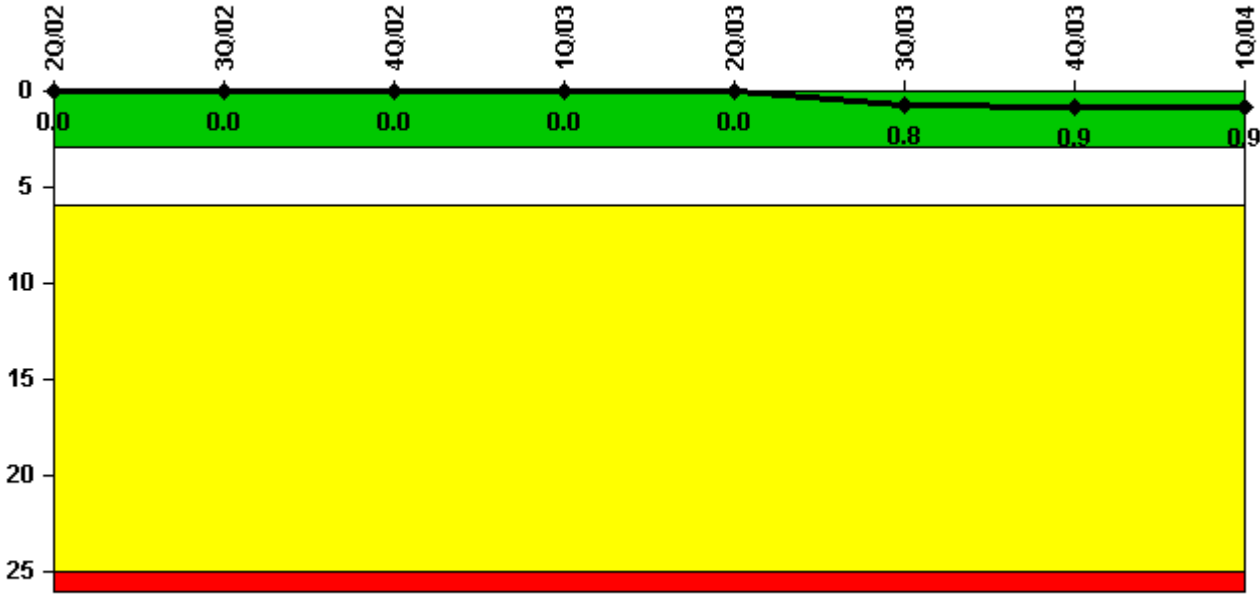


## Peach Bottom 3

### 1Q/2004 Performance Indicators

Licensee's General Comments: none

#### Unplanned Scrams per 7000 Critical Hrs



**Thresholds: White > 3.0 Yellow > 6.0 Red > 25.0**

#### Notes

Unplanned Scrams per 7000 Critical Hrs	2Q/02	3Q/02	4Q/02	1Q/03	2Q/03	3Q/03	4Q/03	1Q/04
Unplanned scrams	0	0	0	0	0	1.0	0	0
Critical hours	2183.0	2208.0	2209.0	2160.0	2183.0	1825.6	1962.4	2184.0
<b>Indicator value</b>	<b>0</b>	<b>0</b>	<b>0</b>	<b>0</b>	<b>0</b>	<b>0.8</b>	<b>0.9</b>	<b>0.9</b>

Licensee Comments: none

### Scrams with Loss of Normal Heat Removal



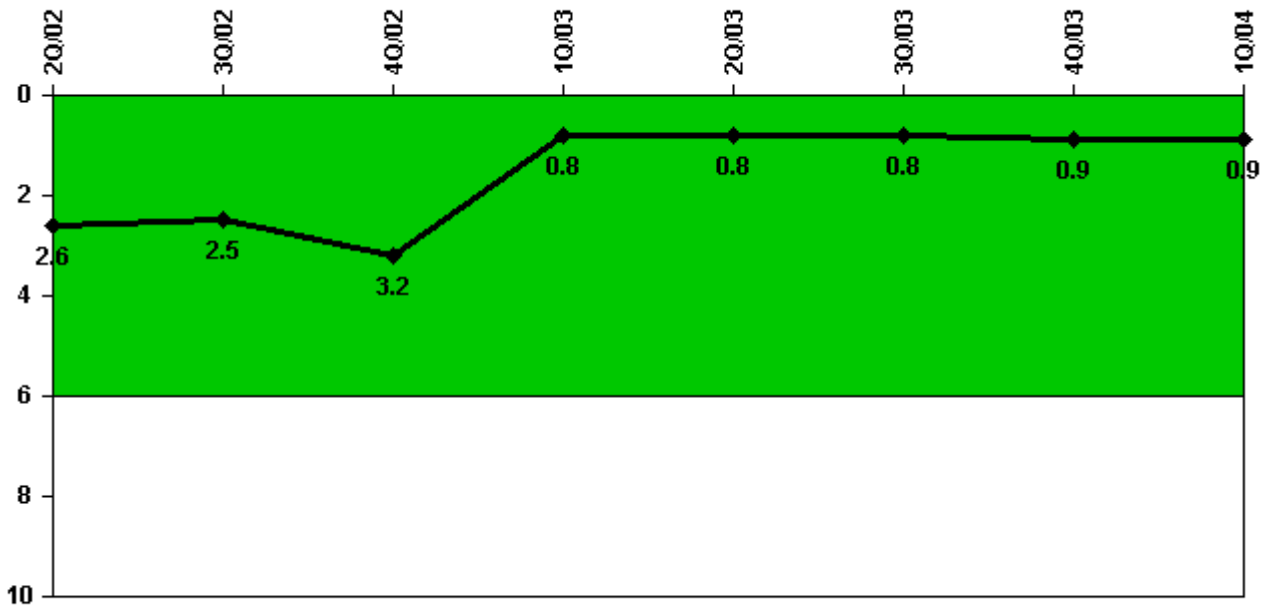
Thresholds: White > 2.0 Yellow > 10.0 Red > 20.0

#### Notes

Scrams with Loss of Normal Heat Removal	2Q/02	3Q/02	4Q/02	1Q/03	2Q/03	3Q/03	4Q/03	1Q/04
Scrams	0	0	0	0	0	0	0	0
Indicator value	0	0	0	0	0	0	0	0

Licensee Comments: none

### Unplanned Power Changes per 7000 Critical Hrs



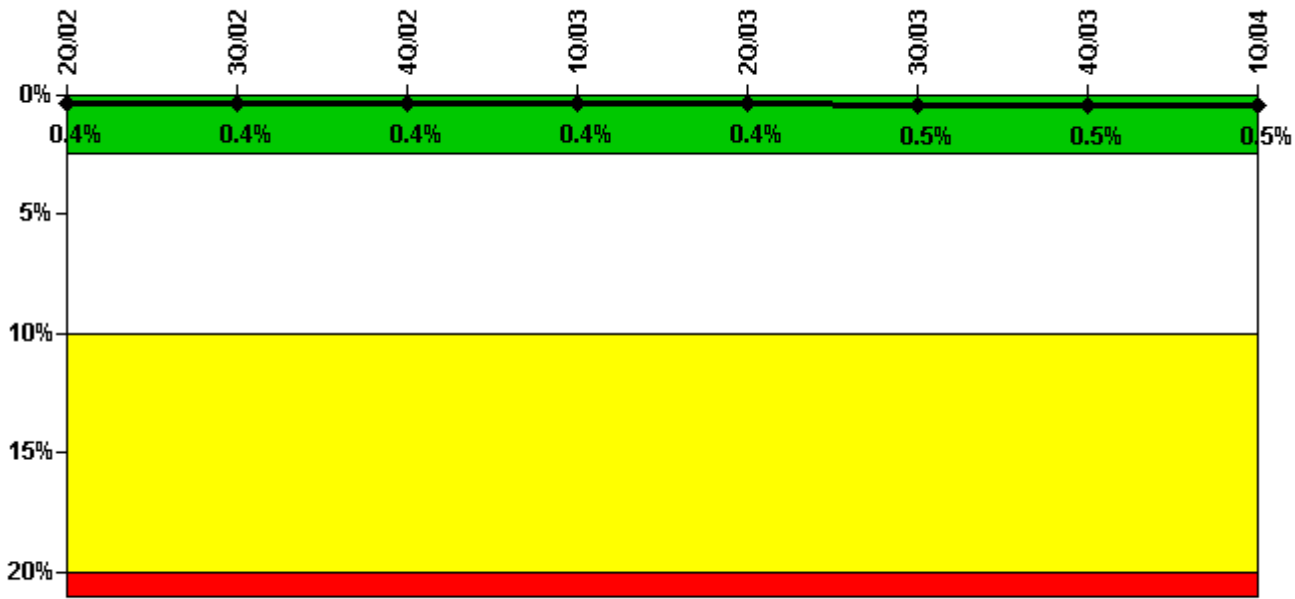
Thresholds: White > 6.0

#### Notes

Unplanned Power Changes per 7000 Critical Hrs	2Q/02	3Q/02	4Q/02	1Q/03	2Q/03	3Q/03	4Q/03	1Q/04
Unplanned power changes	0	0	1.0	0	0	0	1.0	0
Critical hours	2183.0	2208.0	2209.0	2160.0	2183.0	1825.6	1962.4	2184.0
Indicator value	2.6	2.5	3.2	0.8	0.8	0.8	0.9	0.9

Licensee Comments: none

### Safety System Unavailability, Emergency AC Power, >2EDG



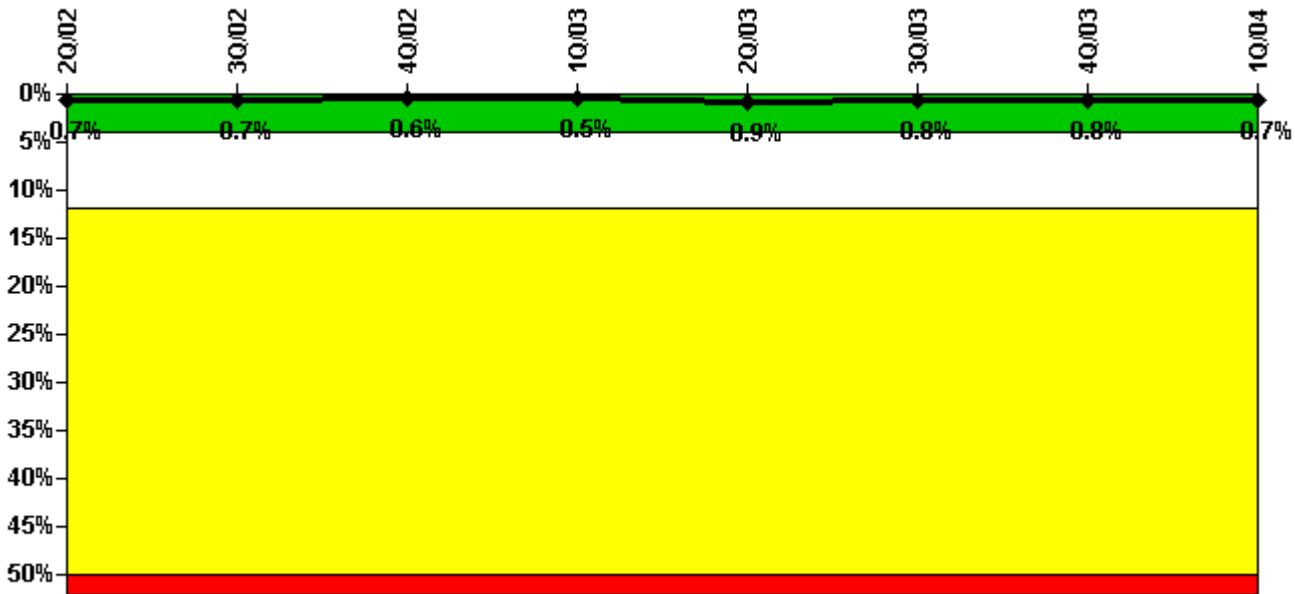
Thresholds: White > 2.5% Yellow > 10.0% Red > 20.0%

#### Notes

Safety System Unavailability, Emergency AC Power, >2EDG	2Q/02	3Q/02	4Q/02	1Q/03	2Q/03	3Q/03	4Q/03	1Q/04
<b>Train 1</b>								
Planned unavailable hours	0	18.50	0.50	5.50	0	0	5.00	15.50
Unplanned unavailable hours	0	0	0	0	0	0	0	0
Fault exposure hours	0	0	0	0	0	0	0	0
Effective Reset hours	0	0	0	0	0	0	0	0
Required hours	2183.00	2208.00	2209.00	2160.00	2183.00	2100.25	1966.00	2184.00
<b>Train 2</b>								
Planned unavailable hours	26.75	0	0	0	0.50	13.50	17.50	0
Unplanned unavailable hours	0	0	0	15.00	0	35.00	0	0
Fault exposure hours	0	0	0	0	0	0	0	0
Effective Reset hours	0	0	0	0	0	0	0	0
Required hours	2183.00	2208.00	2209.00	2160.00	2183.00	1969.25	2209.00	2184.00
<b>Train 3</b>								
Planned unavailable hours	0.50	13.25	0	0	6.75	0.33	0	0
Unplanned unavailable hours	20.00	0	1.50	0	0	0	0	0
Fault exposure hours	0	0	0	0	0	0	0	0
Effective Reset hours	0	0	0	0	0	0	0	0
Required hours	2183.00	2208.00	2209.00	2160.00	2183.00	2019.25	1966.00	2184.00
<b>Train 4</b>								
Planned unavailable hours	0	0	0	0	0	13.00	7.75	0
Unplanned unavailable hours	0	0	0	0	0	0	20.50	0
Fault exposure hours	0	0	0	0	0	0	0	0
Effective Reset hours	0	0	0	0	0	0	0	0
Required hours	2183.00	2208.00	2209.00	2160.00	2183.00	2050.25	2209.00	2184.00
<b>Indicator value</b>	<b>0.4%</b>	<b>0.4%</b>	<b>0.4%</b>	<b>0.4%</b>	<b>0.4%</b>	<b>0.5%</b>	<b>0.5%</b>	<b>0.5%</b>

Licensee Comments: none

### Safety System Unavailability, High Pressure Injection System (HPCI)



Thresholds: White > 4.0% Yellow > 12.0% Red > 50.0%

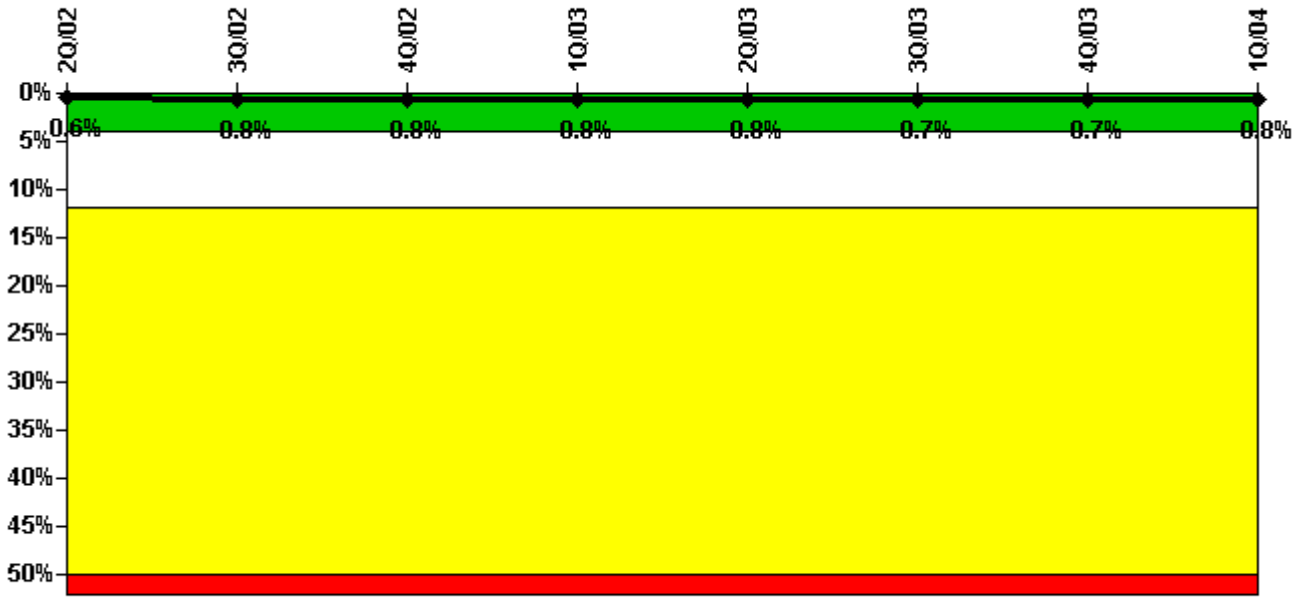
#### Notes

Safety System Unavailability, High Pressure Injection System (HPCI)	2Q/02	3Q/02	4Q/02	1Q/03	2Q/03	3Q/03	4Q/03	1Q/04
<b>Train 1</b>								
Planned unavailable hours	10.64	8.67	4.25	5.34	94.94	0	4.59	0
Unplanned unavailable hours	0	0	0	0	0	0	0	30.97
Fault exposure hours	0	0	0	0	0	0	0	0
Effective Reset hours	0	0	0	0	0	0	0	0
Required hours	2183.00	2208.00	2209.00	2160.00	2183.00	1825.55	1962.42	2184.00
<b>Indicator value</b>	<b>0.7%</b>	<b>0.7%</b>	<b>0.6%</b>	<b>0.5%</b>	<b>0.9%</b>	<b>0.8%</b>	<b>0.8%</b>	<b>0.7%</b>

Licensee Comments:

1Q/04: 396.58 hrs of T/2 exposure was accrued during the month of March 2004 and prior to the discovery of the failed U3 HPCI F/C. 687.03 hours of T/2 exposure was added to the Feb 2004 PI for the U3 HPCI FC failure

### Safety System Unavailability, Heat Removal System (RCIC)



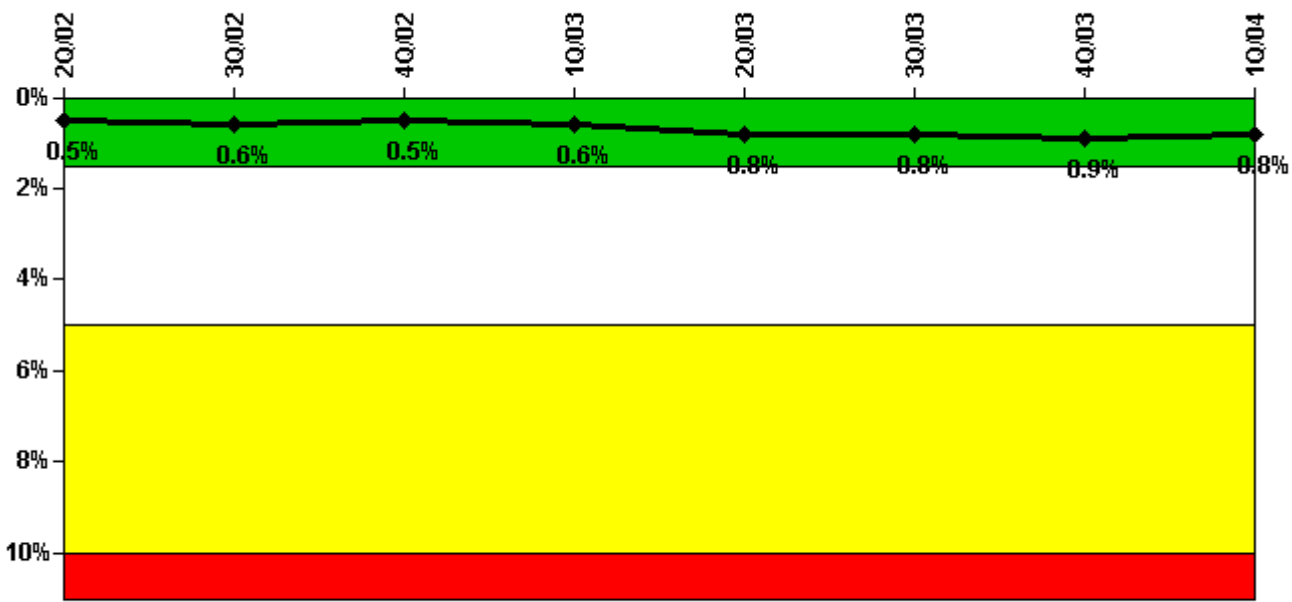
Thresholds: White > 4.0% Yellow > 12.0% Red > 50.0%

#### Notes

Safety System Unavailability, Heat Removal System (RCIC)	2Q/02	3Q/02	4Q/02	1Q/03	2Q/03	3Q/03	4Q/03	1Q/04
<b>Train 1</b>								
Planned unavailable hours	15.87	59.22	10.64	4.60	1.82	6.05	4.33	35.10
Unplanned unavailable hours	0	0	0	0	0	0	0	0
Fault exposure hours	0	0	0	0	0	0	0	0
Effective Reset hours	0	0	0	0	0	0	0	0
Required hours	2183.00	2208.00	2209.00	2160.00	2183.00	1825.55	1962.42	1440.00
<b>Indicator value</b>	<b>0.6%</b>	<b>0.8%</b>	<b>0.8%</b>	<b>0.8%</b>	<b>0.8%</b>	<b>0.7%</b>	<b>0.7%</b>	<b>0.8%</b>

Licensee Comments: none

### Safety System Unavailability, Residual Heat Removal System



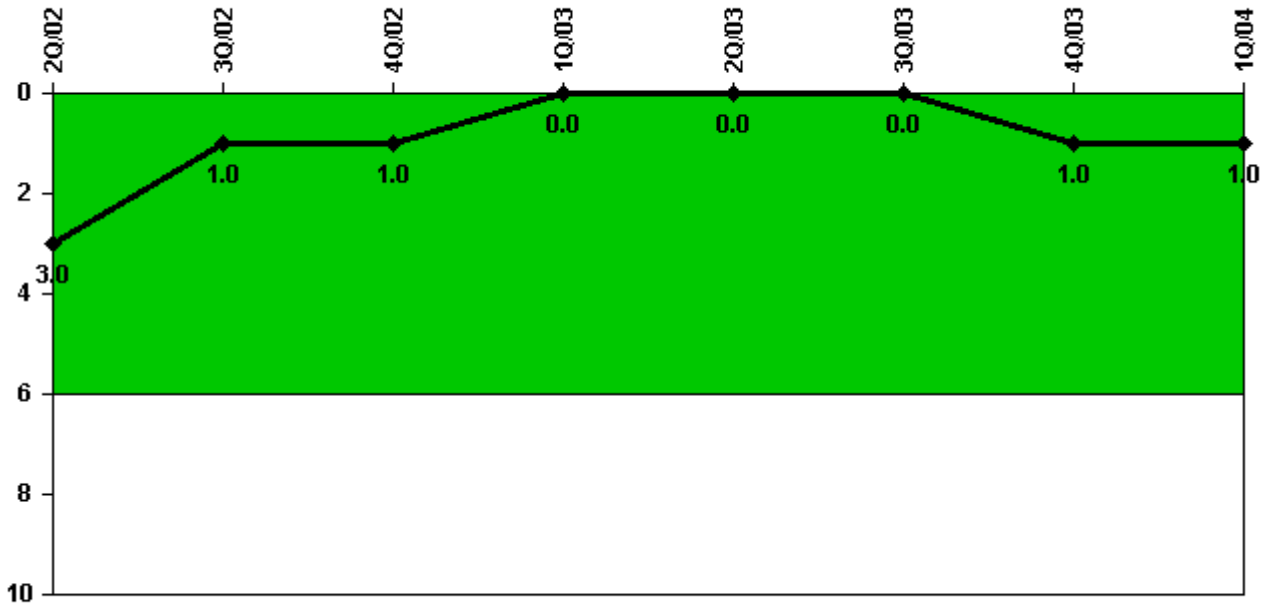
Thresholds: White > 1.5% Yellow > 5.0% Red > 10.0%

#### Notes

Safety System Unavailability, Residual Heat Removal System	2Q/02	3Q/02	4Q/02	1Q/03	2Q/03	3Q/03	4Q/03	1Q/04
<b>Train 1</b>								
Planned unavailable hours	0	0	47.73	0	47.80	27.75	0	1.17
Unplanned unavailable hours	0	0	0	0	0	0	0	0
Fault exposure hours	0	0	0	0	0	0	0	0
Effective Reset hours	0	0	0	0	0	0	0	0
Required hours	2183.00	2208.00	2209.00	2160.00	2183.00	2208.00	2209.00	2184.00
<b>Train 2</b>								
Planned unavailable hours	1.27	14.12	0	42.45	40.18	0	20.08	37.58
Unplanned unavailable hours	0	0	0	0	0	0	0	0
Fault exposure hours	0	0	0	0	0	0	0	0
Effective Reset hours	0	0	0	0	0	0	0	0
Required hours	2183.00	2208.00	2209.00	2160.00	2183.00	1853.58	1961.22	2184.00
<b>Indicator value</b>	<b>0.5%</b>	<b>0.6%</b>	<b>0.5%</b>	<b>0.6%</b>	<b>0.8%</b>	<b>0.8%</b>	<b>0.9%</b>	<b>0.8%</b>

Licensee Comments: none

### Safety System Functional Failures (BWR)



Thresholds: White > 6.0

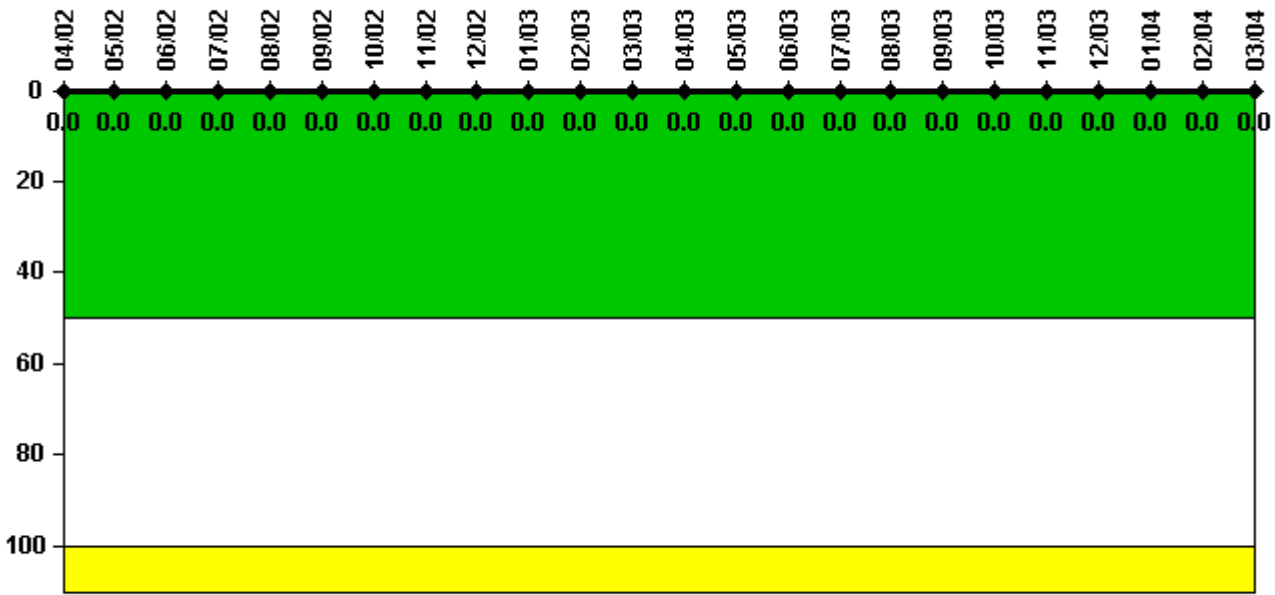
#### Notes

Safety System Functional Failures (BWR)	2Q/02	3Q/02	4Q/02	1Q/03	2Q/03	3Q/03	4Q/03	1Q/04
Safety System Functional Failures	0	0	0	0	0	0	1	0
Indicator value	3	1	1	0	0	0	1	1

Licensee Comments: none



### Reactor Coolant System Activity



Thresholds: White > 50.0 Yellow > 100.0

#### Notes

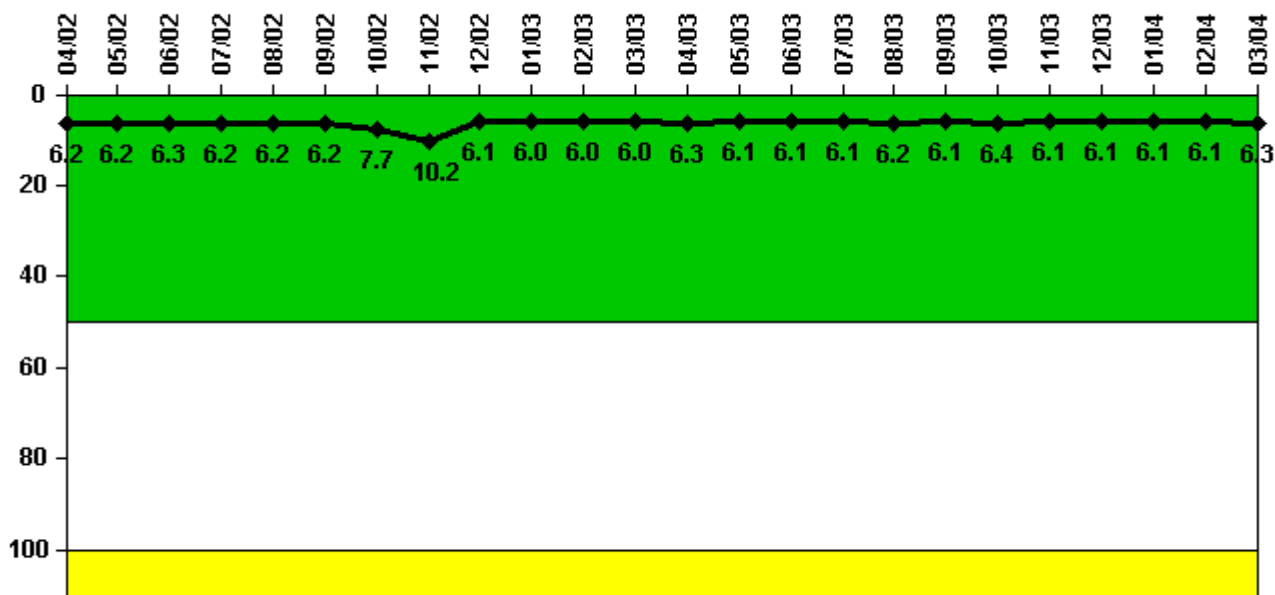
Reactor Coolant System Activity	4/02	5/02	6/02	7/02	8/02	9/02	10/02	11/02	12/02	1/03	2/03	3/03
Maximum activity	0.000006	0.000004	0.000013	0.000007	0.000010	0.000004	0.000004	0.000009	0.000018	0.000007	0.000006	0.000009
Technical specification limit	0.2	0.2	0.2	0.2	0.2	0.2	0.2	0.2	0.2	0.2	0.2	0.2
Indicator value	0	0	0	0	0	0	0	0	0	0	0	0

Reactor Coolant System Activity	4/03	5/03	6/03	7/03	8/03	9/03	10/03	11/03	12/03	1/04	2/04	3/04
Maximum activity	0.000007	0.000009	0.000005	0.000006	0.000003	0.000011	0.000015	0.000006	0.000009	0.000005	0.000005	0.000007
Technical specification limit	0.2	0.2	0.2	0.2	0.2	0.2	0.2	0.2	0.2	0.2	0.2	0.2
Indicator value	0	0	0	0	0	0	0	0	0	0	0	0

Licensee Comments: none

### Reactor Coolant System Leakage



Thresholds: White > 50.0 Yellow > 100.0

#### Notes

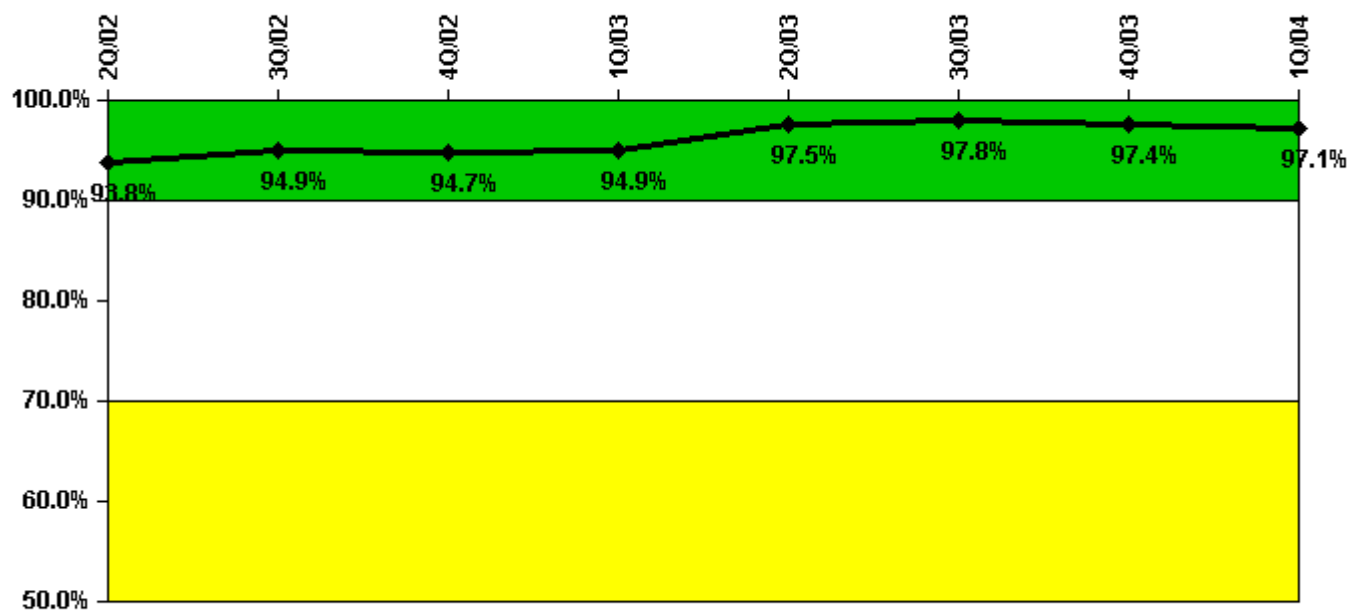
Reactor Coolant System Leakage	4/02	5/02	6/02	7/02	8/02	9/02	10/02	11/02	12/02	1/03	2/03	3/03
Maximum leakage	1.560	1.560	1.570	1.560	1.560	1.560	1.920	2.540	1.520	1.500	1.500	1.490
Technical specification limit	25.0	25.0	25.0	25.0	25.0	25.0	25.0	25.0	25.0	25.0	25.0	25.0
Indicator value	6.2	6.2	6.3	6.2	6.2	6.2	7.7	10.2	6.1	6.0	6.0	6.0

Reactor Coolant System Leakage	4/03	5/03	6/03	7/03	8/03	9/03	10/03	11/03	12/03	1/04	2/04	3/04
Maximum leakage	1.570	1.520	1.530	1.530	1.540	1.530	1.590	1.530	1.520	1.530	1.530	1.570
Technical specification limit	25.0	25.0	25.0	25.0	25.0	25.0	25.0	25.0	25.0	25.0	25.0	25.0
Indicator value	6.3	6.1	6.1	6.1	6.2	6.1	6.4	6.1	6.1	6.1	6.1	6.3

Licensee Comments: none

### Drill/Exercise Performance



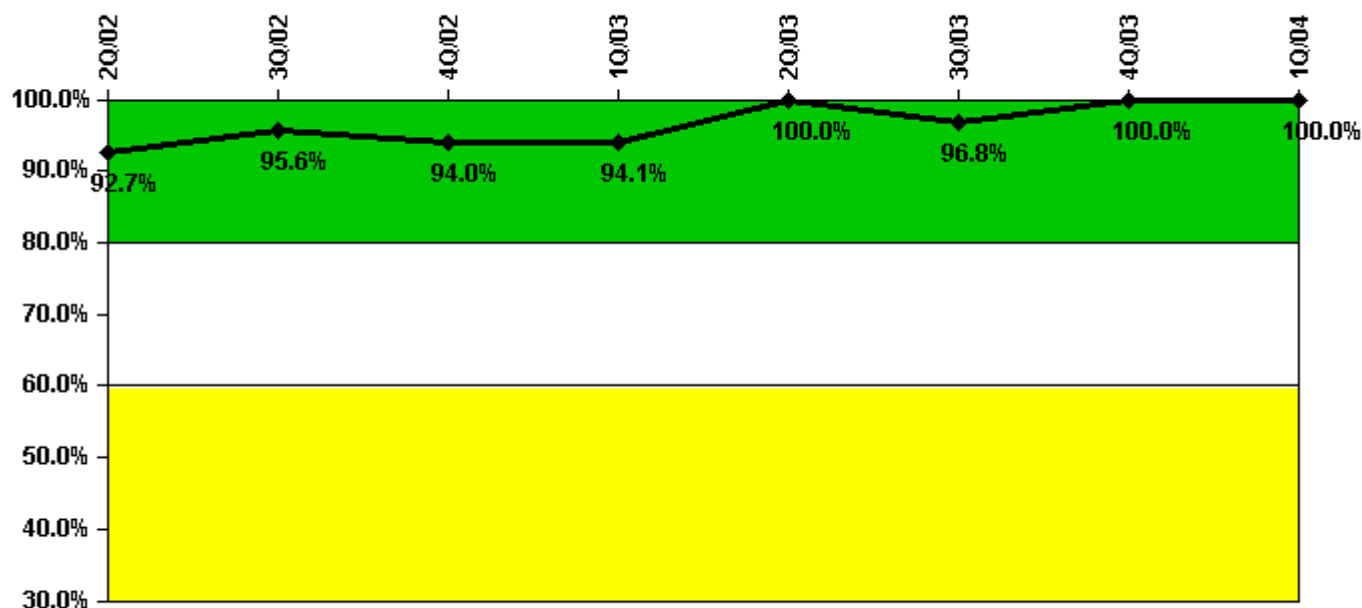
Thresholds: White < 90.0% Yellow < 70.0%

#### Notes

Drill/Exercise Performance	2Q/02	3Q/02	4Q/02	1Q/03	2Q/03	3Q/03	4Q/03	1Q/04
Successful opportunities	1.0	23.0	15.0	18.0	57.0	20.0	21.0	49.0
Total opportunities	2.0	24.0	16.0	18.0	58.0	20.0	22.0	50.0
Indicator value	93.8%	94.9%	94.7%	94.9%	97.5%	97.8%	97.4%	97.1%

Licensee Comments: none

### ERO Drill Participation



Thresholds: White < 80.0% Yellow < 60.0%

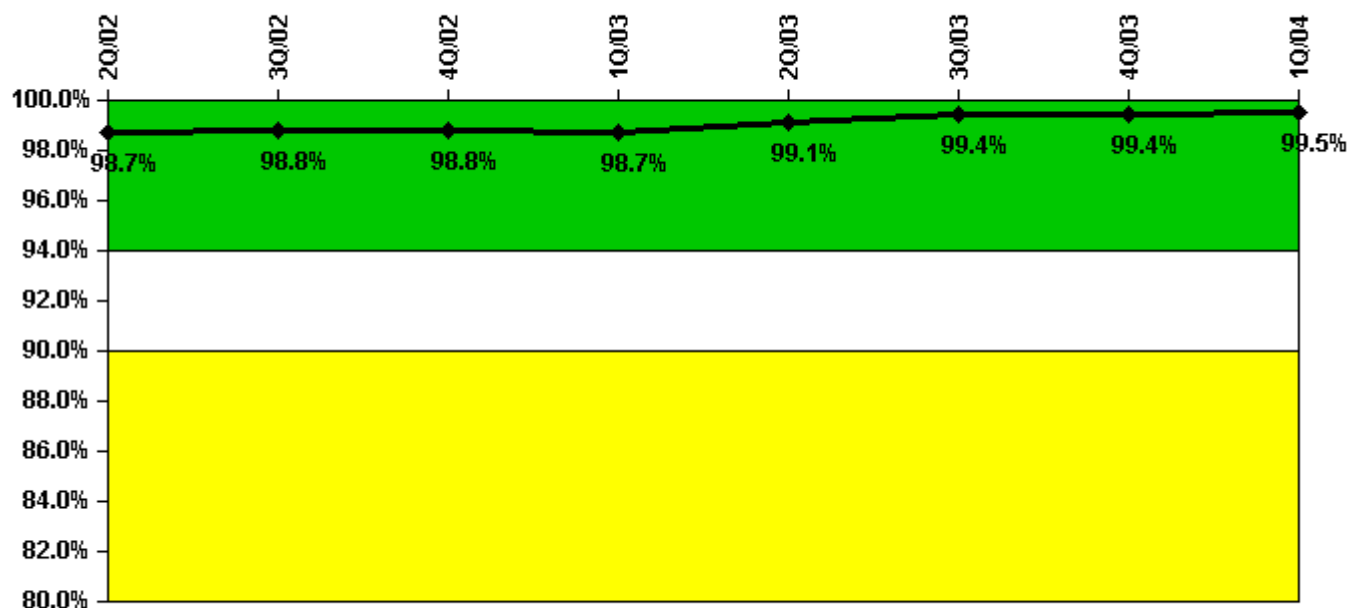
#### Notes

ERO Drill Participation	2Q/02	3Q/02	4Q/02	1Q/03	2Q/03	3Q/03	4Q/03	1Q/04
Participating Key personnel	38.0	43.0	47.0	48.0	53.0	60.0	61.0	68.0
Total Key personnel	41.0	45.0	50.0	51.0	53.0	62.0	61.0	68.0
Indicator value	92.7%	95.6%	94.0%	94.1%	100.0%	96.8%	100.0%	100.0%

#### Licensee Comments:

1Q/04: Exelon has modified the utility procedure for the calculation of the NEI 99-02 Rev 2 ERO Participation PI. Participation is now counted as individual opportunities for each function, even when the function is performed by the same ERO member. Through discussions with NEI, NRC and other utilities it has been determined that interpretation has varied on how to count members who perform more than one key function. Although an FAQ has been developed to resolve the question, Exelon will adopt the revised calculation beginning with the submittal for 1Q04.

### Alert & Notification System



Thresholds: White < 94.0% Yellow < 90.0%

#### Notes

Alert & Notification System	2Q/02	3Q/02	4Q/02	1Q/03	2Q/03	3Q/03	4Q/03	1Q/04
Successful siren-tests	1233	1241	1254	1251	1254	1254	1353	1254
Total sirens-tests	1261	1261	1261	1261	1261	1261	1358	1261
Indicator value	98.7%	98.8%	98.8%	98.7%	99.1%	99.4%	99.4%	99.5%

Licensee Comments: none

### Occupational Exposure Control Effectiveness



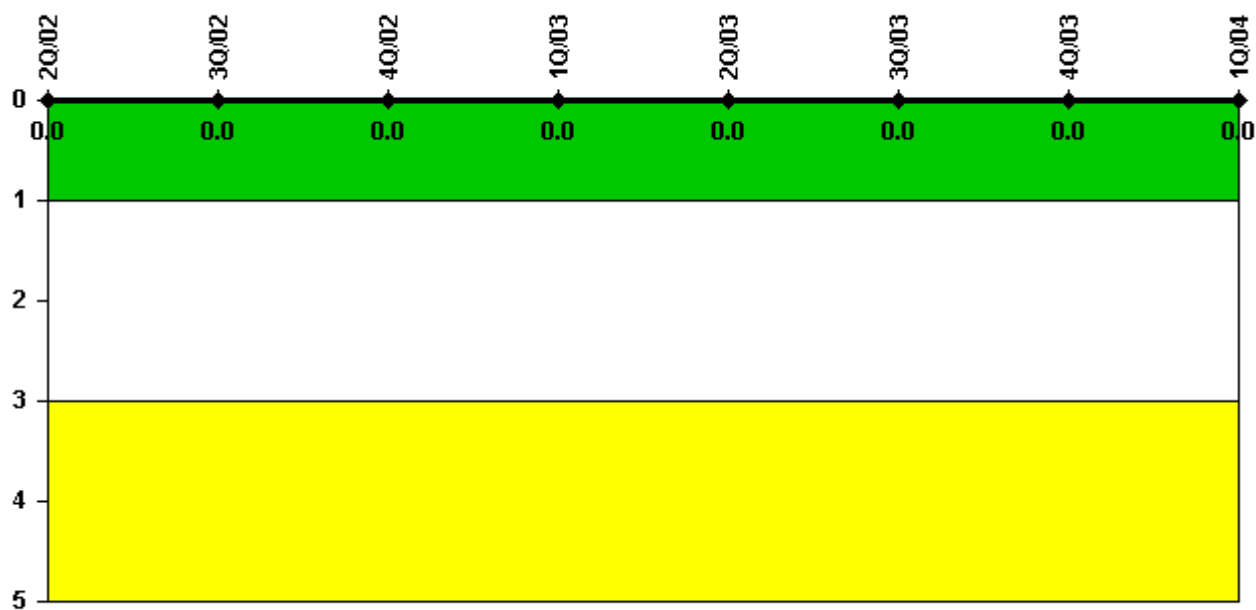
Thresholds: White > 2.0 Yellow > 5.0

#### Notes

Occupational Exposure Control Effectiveness	2Q/02	3Q/02	4Q/02	1Q/03	2Q/03	3Q/03	4Q/03	1Q/04
High radiation area occurrences	0	0	0	0	0	0	0	0
Very high radiation area occurrences	0	0	0	0	0	0	0	0
Unintended exposure occurrences	0	0	0	0	0	0	0	0
<b>Indicator value</b>	<b>0</b>	<b>0</b>	<b>0</b>	<b>0</b>	<b>0</b>	<b>0</b>	<b>0</b>	<b>0</b>

Licensee Comments: none

### RETS/ODCM Radiological Effluent



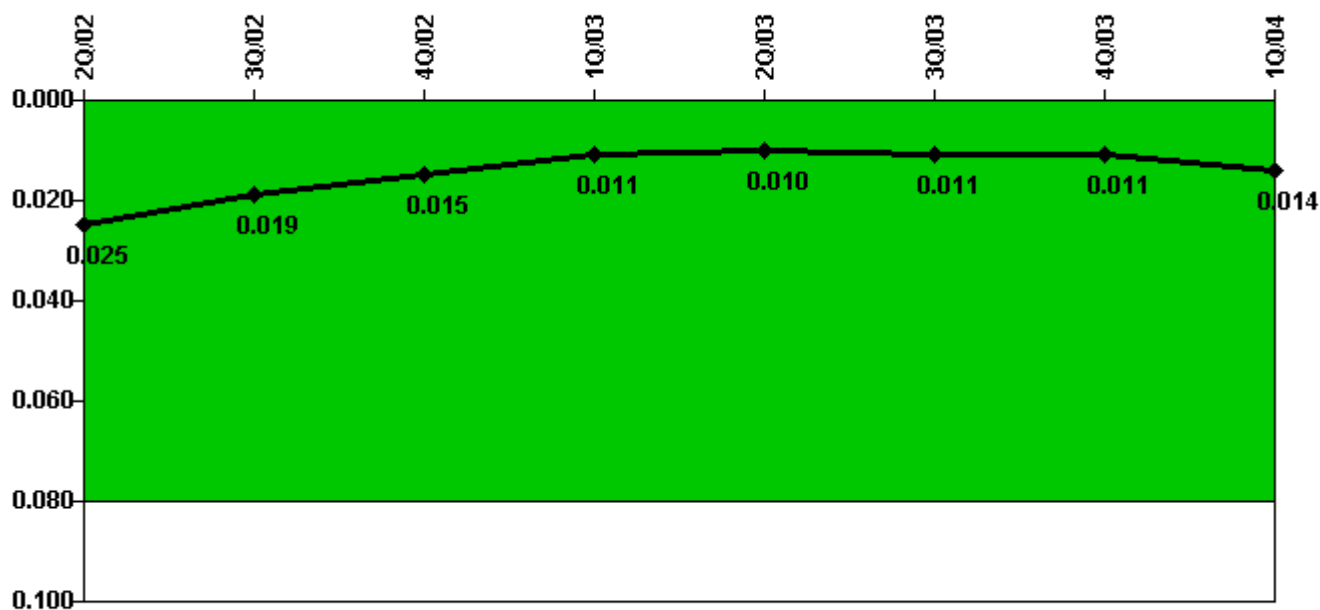
Thresholds: White > 1.0 Yellow > 3.0

#### Notes

RETS/ODCM Radiological Effluent	2Q/02	3Q/02	4Q/02	1Q/03	2Q/03	3Q/03	4Q/03	1Q/04
RETS/ODCM occurrences	0	0	0	0	0	0	0	0
<b>Indicator value</b>	<b>0</b>	<b>0</b>	<b>0</b>	<b>0</b>	<b>0</b>	<b>0</b>	<b>0</b>	<b>0</b>

Licensee Comments: none

### Protected Area Security Performance Index



Thresholds: White > 0.080

#### Notes

Protected Area Security Performance Index	2Q/02	3Q/02	4Q/02	1Q/03	2Q/03	3Q/03	4Q/03	1Q/04
IDS compensatory hours	130.60	67.20	55.30	60.50	75.60	123.70	41.80	165.30
CCTV compensatory hours	0.6	22.1	0	2.5	20.7	11.1	0.2	11.5
IDS normalization factor	1.85	1.85	1.85	1.85	1.85	1.85	1.85	1.85
CCTV normalization factor	1.3	1.3	1.3	1.3	1.3	1.3	1.3	1.3
<b>Index Value</b>	<b>0.025</b>	<b>0.019</b>	<b>0.015</b>	<b>0.011</b>	<b>0.010</b>	<b>0.011</b>	<b>0.011</b>	<b>0.014</b>

Licensee Comments: none



### Personnel Screening Program



Thresholds: White > 2.0 Yellow > 5.0

#### Notes

Personnel Screening Program	2Q/02	3Q/02	4Q/02	1Q/03	2Q/03	3Q/03	4Q/03	1Q/04
Program failures	0	0	0	0	0	0	0	0
Indicator value	0	0	0	0	0	0	0	0

Licensee Comments: none

### FFD/Personnel Reliability



Thresholds: White > 2.0 Yellow > 5.0

#### Notes

FFD/Personnel Reliability	2Q/02	3Q/02	4Q/02	1Q/03	2Q/03	3Q/03	4Q/03	1Q/04
Program Failures	0	0	0	0	0	0	0	0
<b>Indicator value</b>	<b>0</b>	<b>0</b>	<b>0</b>	<b>0</b>	<b>0</b>	<b>0</b>	<b>0</b>	<b>0</b>

Licensee Comments: none

▲ [PI Summary](#) | [Inspection Findings Summary](#) | [Reactor Oversight Process](#)

Last Modified: April 22, 2004