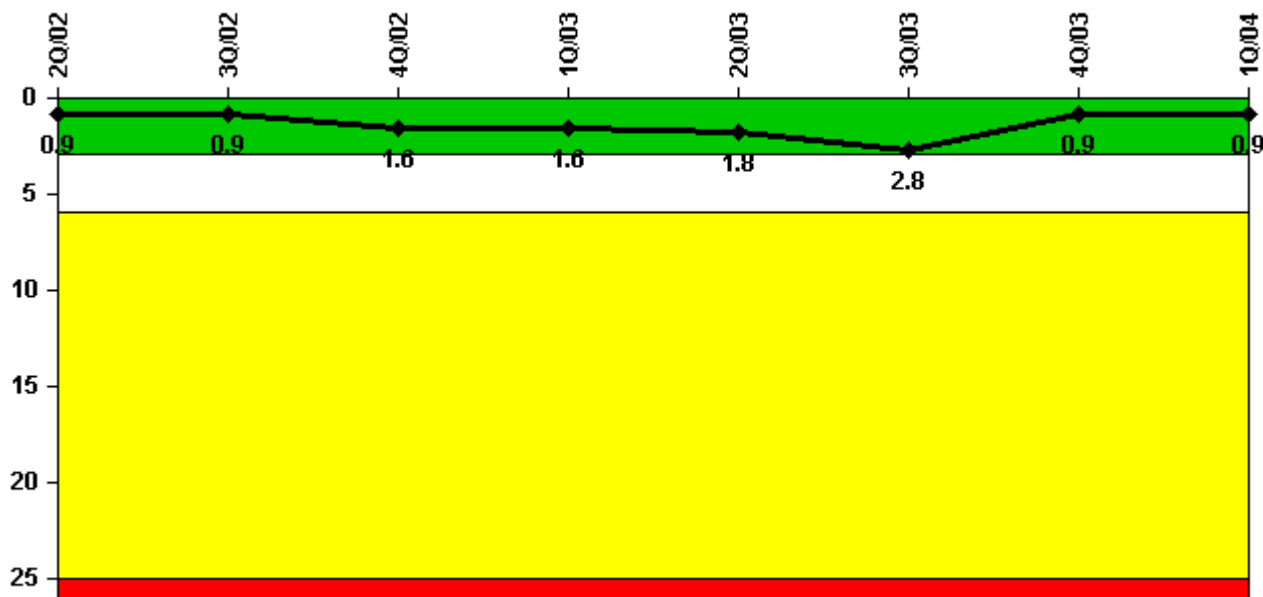


## Fermi 2

### 1Q/2004 Performance Indicators

Licensee's General Comments: none

#### Unplanned Scrams per 7000 Critical Hrs



Thresholds: White > 3.0 Yellow > 6.0 Red > 25.0

#### Notes

Unplanned Scrams per 7000 Critical Hrs	2Q/02	3Q/02	4Q/02	1Q/03	2Q/03	3Q/03	4Q/03	1Q/04
Unplanned scrams	0	0	2.0	0	0	1.0	0	0
Critical hours	2183.0	2208.0	2094.9	2086.6	1307.5	2010.5	2209.0	2184.0
<b>Indicator value</b>	<b>0.9</b>	<b>0.9</b>	<b>1.6</b>	<b>1.6</b>	<b>1.8</b>	<b>2.8</b>	<b>0.9</b>	<b>0.9</b>

Licensee Comments: none

### Scrams with Loss of Normal Heat Removal



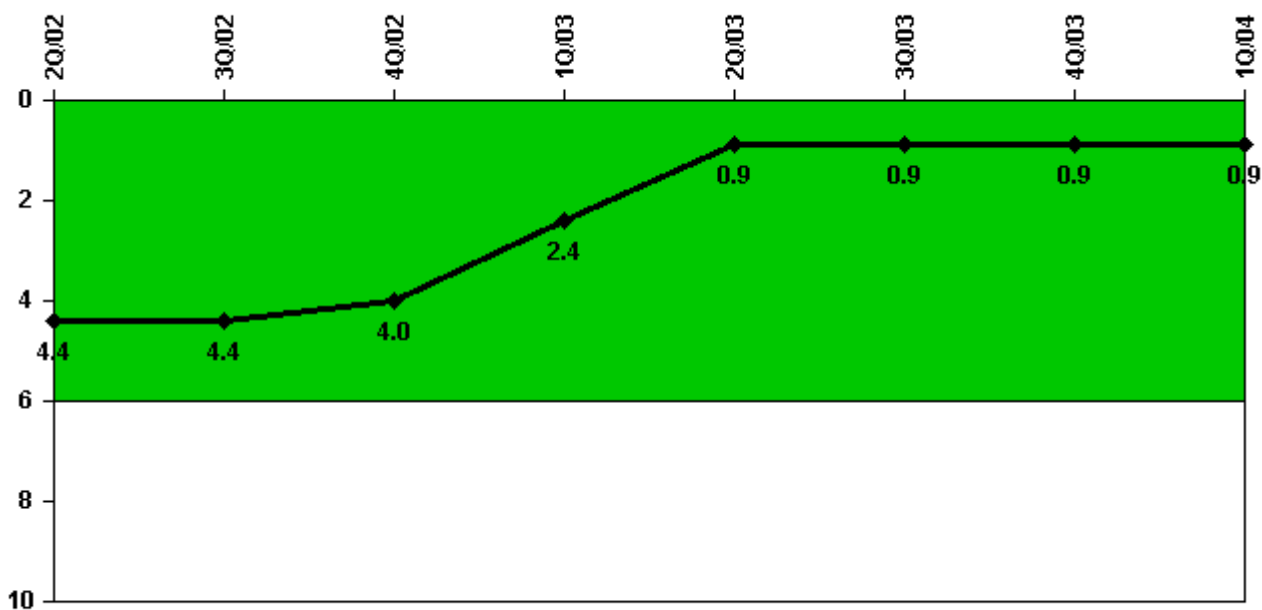
Thresholds: White > 2.0 Yellow > 10.0 Red > 20.0

#### Notes

Scrams with Loss of Normal Heat Removal	2Q/02	3Q/02	4Q/02	1Q/03	2Q/03	3Q/03	4Q/03	1Q/04
Scrams	0	0	0	0	0	0	0	0
Indicator value	0	0	0	0	0	0	0	0

Licensee Comments: none

### Unplanned Power Changes per 7000 Critical Hrs



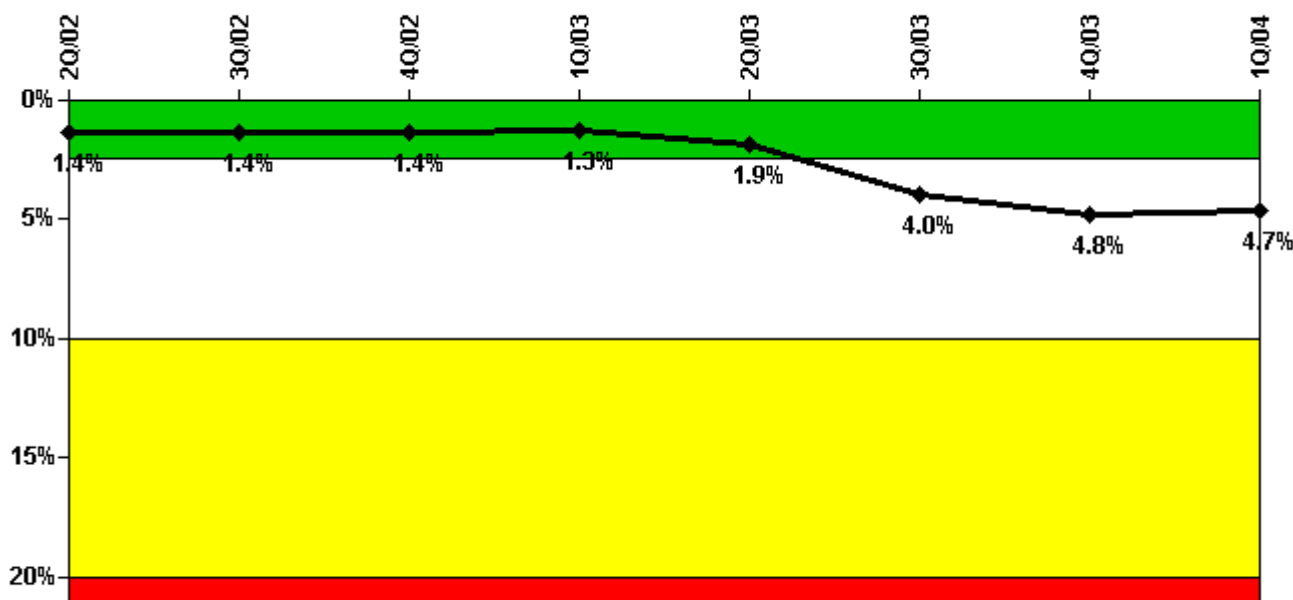
Thresholds: White > 6.0

#### Notes

Unplanned Power Changes per 7000 Critical Hrs	2Q/02	3Q/02	4Q/02	1Q/03	2Q/03	3Q/03	4Q/03	1Q/04
Unplanned power changes	2.0	0	0	1.0	0	0	0	1.0
Critical hours	2183.0	2208.0	2094.9	2086.6	1307.5	2010.5	2209.0	2184.0
Indicator value	4.4	4.4	4.0	2.4	0.9	0.9	0.9	0.9

Licensee Comments: none

### Safety System Unavailability, Emergency AC Power, >2EDG



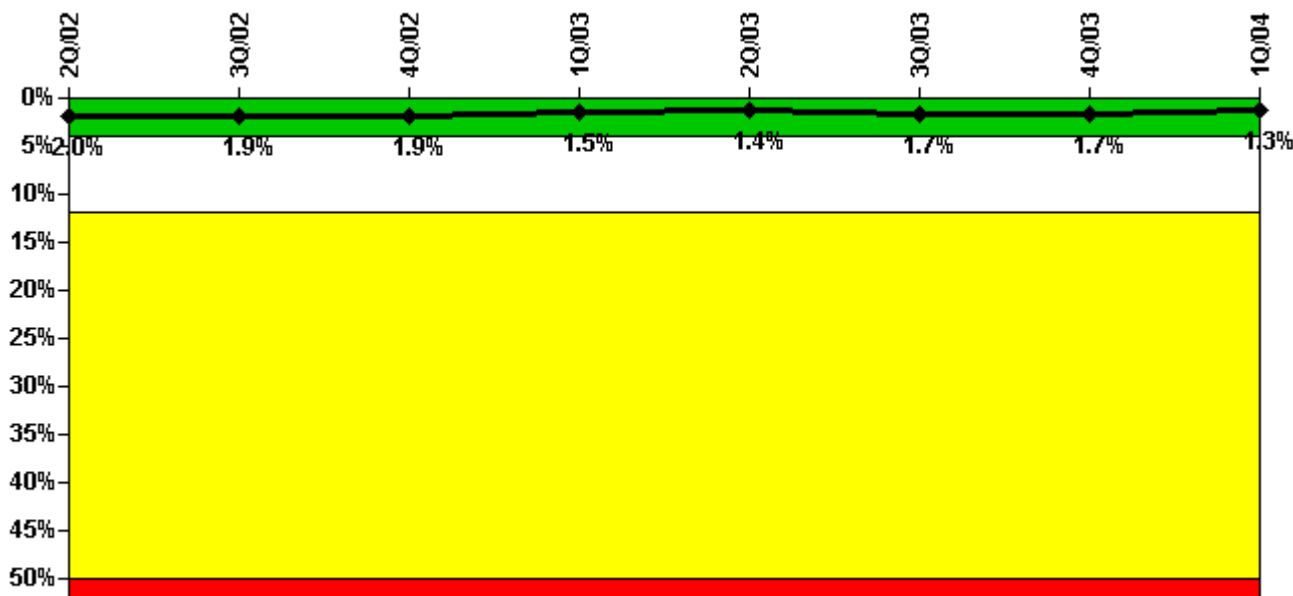
Thresholds: White > 2.5% Yellow > 10.0% Red > 20.0%

#### Notes

Safety System Unavailability, Emergency AC Power, >2EDG	2Q/02	3Q/02	4Q/02	1Q/03	2Q/03	3Q/03	4Q/03	1Q/04
<b>Train 1</b>								
Planned unavailable hours	35.65	52.76	7.04	38.03	8.15	28.15	9.52	10.00
Unplanned unavailable hours	0	0	0	29.82	0	0	0	0
Fault exposure hours	0	0	0	0	0	0	0	0
Effective Reset hours	0	0	0	0	0	0	0	0
Required hours	2183.00	2208.00	2209.00	2160.00	2183.00	2208.00	2209.00	2184.00
<b>Train 2</b>								
Planned unavailable hours	145.44	11.37	16.53	17.09	2.13	0	11.47	71.86
Unplanned unavailable hours	0	0	26.40	0	0	0	0	0
Fault exposure hours	0	0	0	0	694.00	2208.00	928.93	0
Effective Reset hours	0	0	0	0	0	0	0	0
Required hours	2183.00	2208.00	2209.00	2160.00	2183.00	2208.00	2209.00	2184.00
<b>Train 3</b>								
Planned unavailable hours	32.67	7.72	6.95	26.45	3.55	6.09	17.49	8.03
Unplanned unavailable hours	8.38	1.30	0	0	2.03	0	0	0
Fault exposure hours	0	0	0	0	0	0	0	0
Effective Reset hours	0	0	0	0	0	0	0	0
Required hours	2183.00	2208.00	2209.00	2160.00	2183.00	2208.00	2209.00	2184.00
<b>Train 4</b>								
Planned unavailable hours	56.16	23.22	7.74	24.71	8.61	8.17	5.63	13.07
Unplanned unavailable hours	0	3.94	0	0	0	0	0	0
Fault exposure hours	0	0	0	0	0	0	0	0
Effective Reset hours	0	0	0	0	0	0	0	0
Required hours	2183.00	2208.00	2209.00	2160.00	2183.00	2208.00	2209.00	2184.00
<b>Indicator value</b>	<b>1.4%</b>	<b>1.4%</b>	<b>1.4%</b>	<b>1.3%</b>	<b>1.9%</b>	<b>4.0%</b>	<b>4.8%</b>	<b>4.7%</b>

Licensee Comments: none

### Safety System Unavailability, High Pressure Injection System (HPCI)



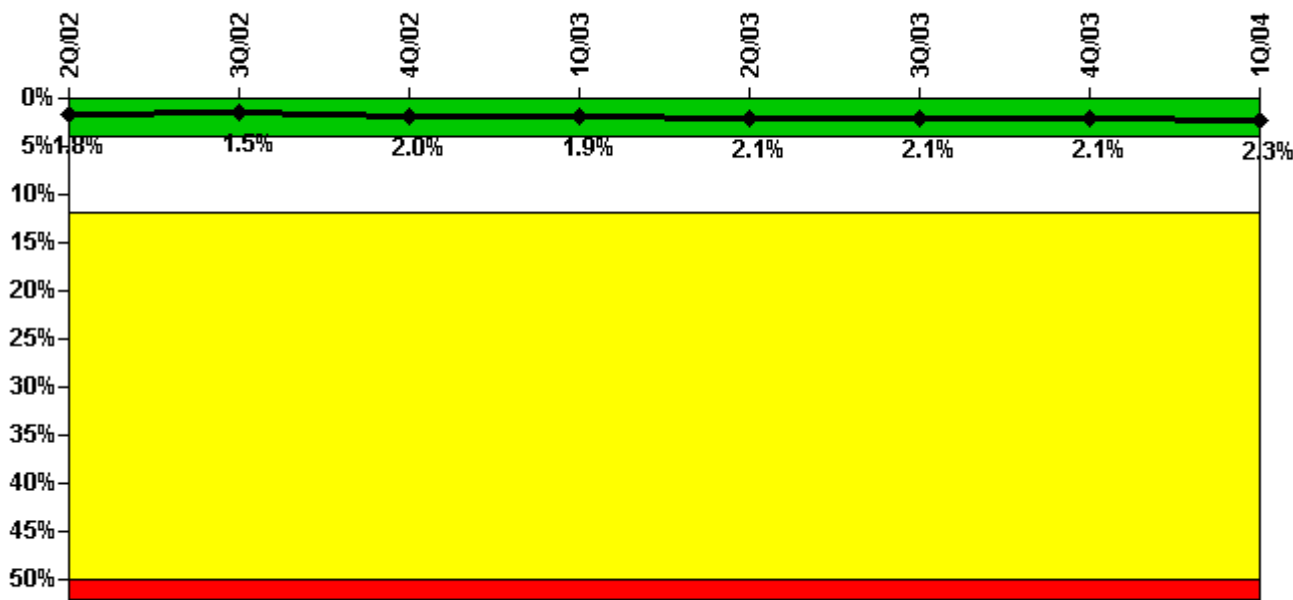
Thresholds: White > 4.0% Yellow > 12.0% Red > 50.0%

#### Notes

Safety System Unavailability, High Pressure Injection System (HPCI)	2Q/02	3Q/02	4Q/02	1Q/03	2Q/03	3Q/03	4Q/03	1Q/04
<b>Train 1</b>								
Planned unavailable hours	21.45	3.13	2.20	26.08	0	66.32	3.18	1.37
Unplanned unavailable hours	0	0	0	0	0	3.30	0	0
Fault exposure hours	0	0	0	0	0	0	0	0
Effective Reset hours	0	0	0	0	0	0	0	0
Required hours	2183.00	2208.00	2094.90	2086.60	1307.50	2010.50	2209.00	2184.00
<b>Indicator value</b>	<b>2.0%</b>	<b>1.9%</b>	<b>1.9%</b>	<b>1.5%</b>	<b>1.4%</b>	<b>1.7%</b>	<b>1.7%</b>	<b>1.3%</b>

Licensee Comments: none

### Safety System Unavailability, Heat Removal System (RCIC)



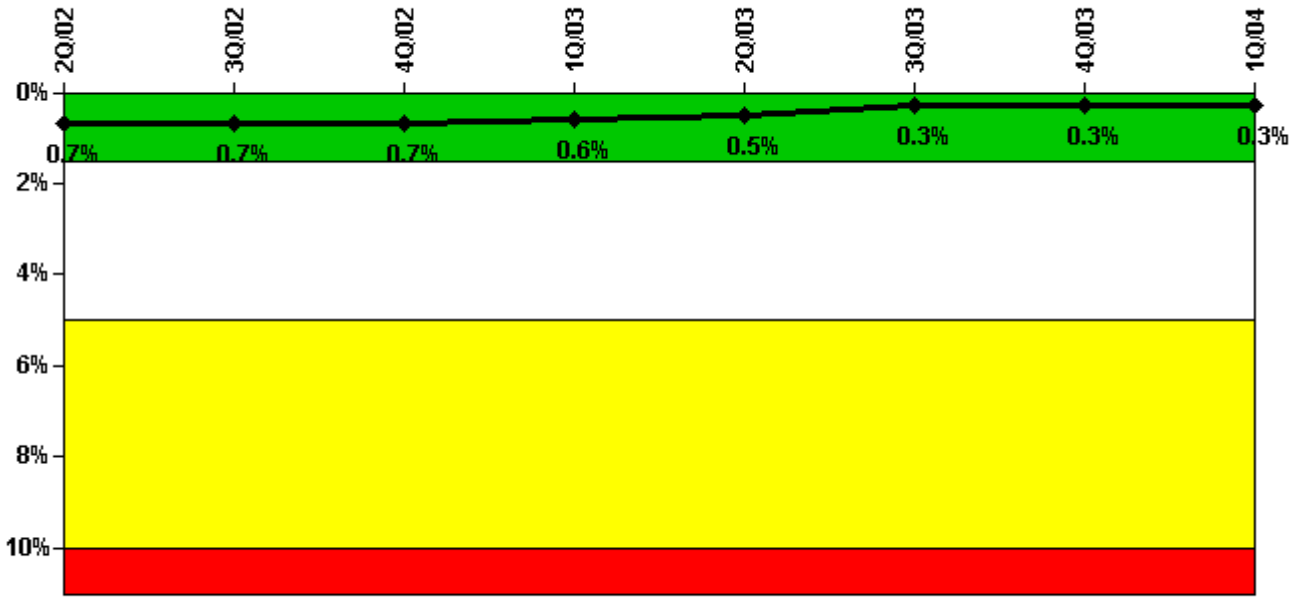
Thresholds: White > 4.0% Yellow > 12.0% Red > 50.0%

#### Notes

Safety System Unavailability, Heat Removal System (RCIC)	2Q/02	3Q/02	4Q/02	1Q/03	2Q/03	3Q/03	4Q/03	1Q/04
<b>Train 1</b>								
Planned unavailable hours	1.98	2.83	127.80	14.21	57.48	7.98	2.52	55.16
Unplanned unavailable hours	0	0	0	0	0	0	2.92	0
Fault exposure hours	0	0	0	0	0	0	0	0
Effective Reset hours	0	0	0	0	0	0	0	0
Required hours	2183.00	2208.00	2094.90	2086.60	1307.50	2010.50	2209.00	2184.00
<b>Indicator value</b>	<b>1.8%</b>	<b>1.5%</b>	<b>2.0%</b>	<b>1.9%</b>	<b>2.1%</b>	<b>2.1%</b>	<b>2.1%</b>	<b>2.3%</b>

Licensee Comments: none

### Safety System Unavailability, Residual Heat Removal System



Thresholds: White > 1.5% Yellow > 5.0% Red > 10.0%

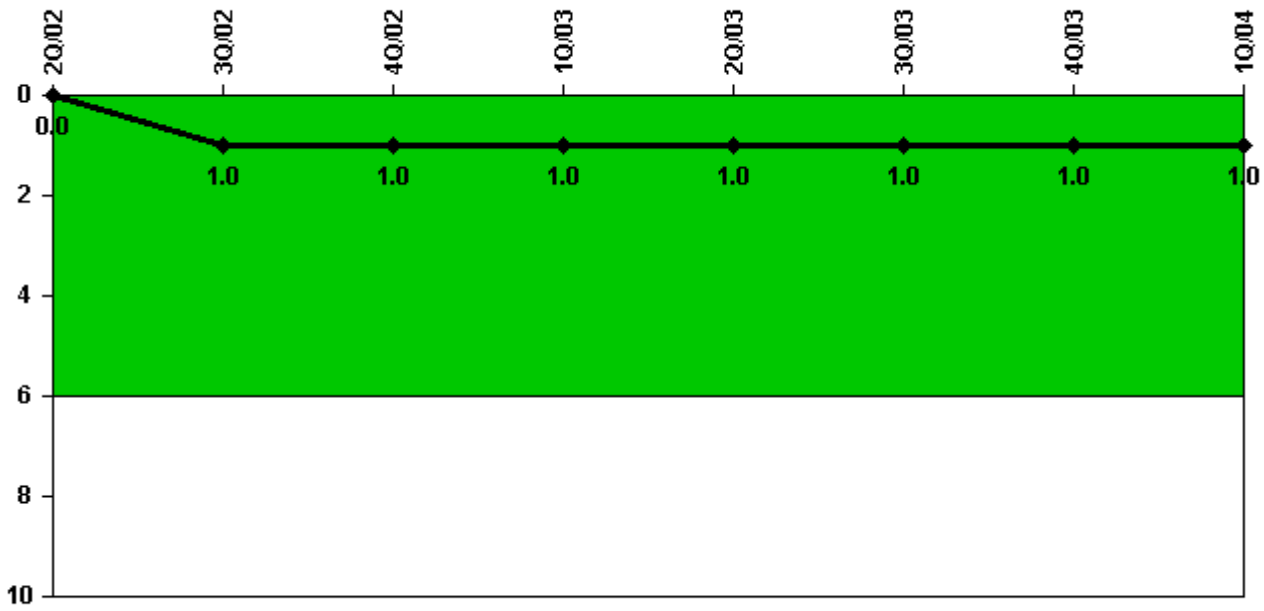
#### Notes

Safety System Unavailability, Residual Heat Removal System	2Q/02	3Q/02	4Q/02	1Q/03	2Q/03	3Q/03	4Q/03	1Q/04
<b>Train 1</b>								
Planned unavailable hours	0.67	19.08	3.13	0.88	0	13.76	0.62	1.42
Unplanned unavailable hours	0	0	0	0	0.65	0	0.15	0
Fault exposure hours	0	0	0	0	0	0	0	0
Effective Reset hours	0	0	0	0	0	0	0	0
Required hours	2183.00	2208.00	2209.00	2160.00	2183.00	2208.00	2209.00	2184.00
<b>Train 2</b>								
Planned unavailable hours	17.74	1.20	1.50	9.05	0	8.85	1.70	1.10
Unplanned unavailable hours	0	0	0	0	0	0	0	0
Fault exposure hours	0	0	0	0	0	0	0	0
Effective Reset hours	0	0	0	0	0	0	0	0
Required hours	2183.00	2208.00	2209.00	2160.00	2183.00	2208.00	2209.00	2184.00
<b>Indicator value</b>	<b>0.7%</b>	<b>0.7%</b>	<b>0.7%</b>	<b>0.6%</b>	<b>0.5%</b>	<b>0.3%</b>	<b>0.3%</b>	<b>0.3%</b>

Licensee Comments:

2Q/03: April 2003 Train 1 RHR Data amended in Q1 2004 submittal as the result of data review. 39 minutes of unplanned unavailability added, no impact on Indicator status {remained Green}

### Safety System Functional Failures (BWR)



Thresholds: White > 6.0

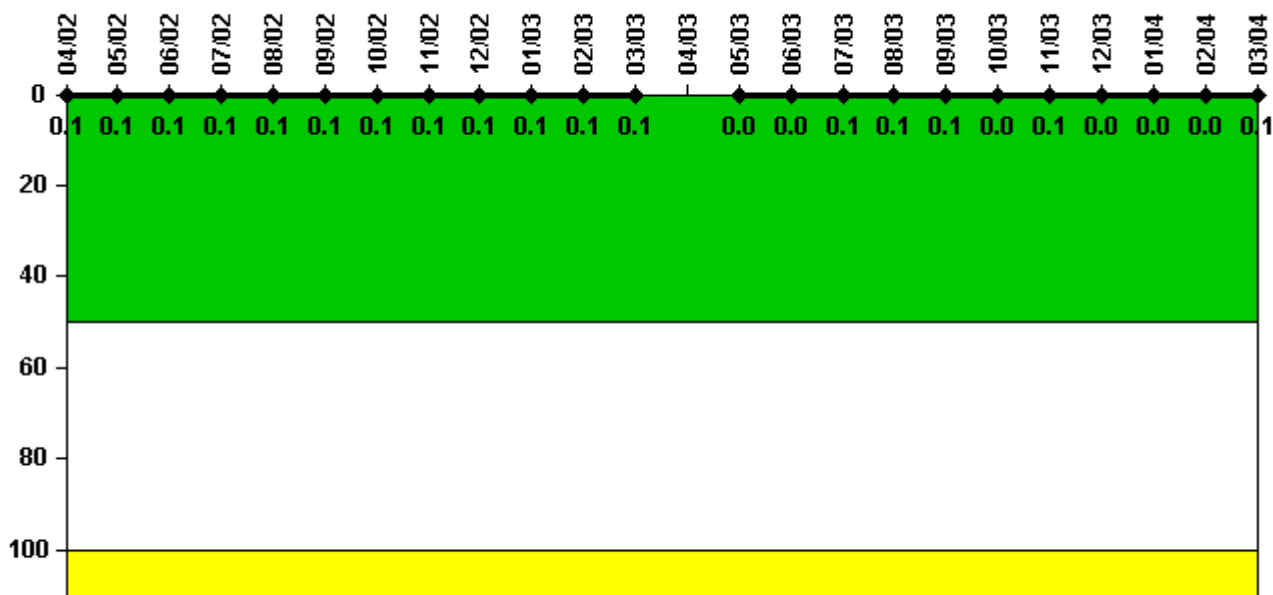
#### Notes

Safety System Functional Failures (BWR)	2Q/02	3Q/02	4Q/02	1Q/03	2Q/03	3Q/03	4Q/03	1Q/04
Safety System Functional Failures	0	1	0	0	0	1	0	0
Indicator value	0	1	1	1	1	1	1	1

Licensee Comments: none



### Reactor Coolant System Activity



Thresholds: White > 50.0 Yellow > 100.0

#### Notes

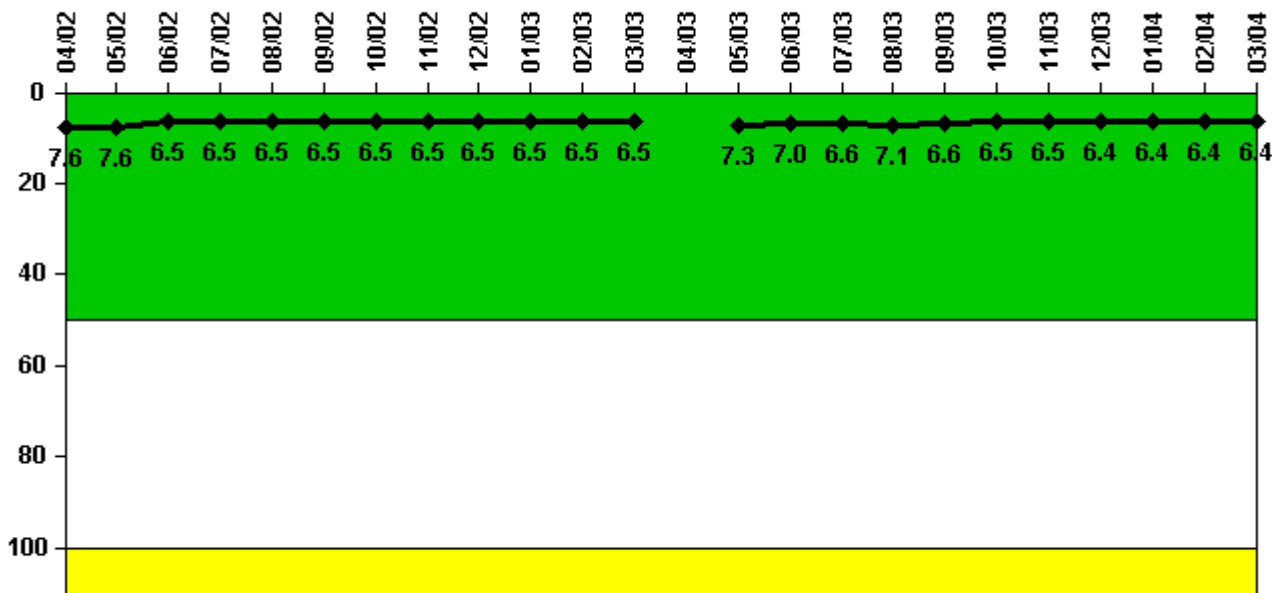
Reactor Coolant System Activity	4/02	5/02	6/02	7/02	8/02	9/02	10/02	11/02	12/02	1/03	2/03	3/03
Maximum activity	0.000174	0.000178	0.000198	0.000208	0.000184	0.000196	0.000173	0.000211	0.000169	0.000144	0.000178	0.000168
Technical specification limit	0.2	0.2	0.2	0.2	0.2	0.2	0.2	0.2	0.2	0.2	0.2	0.2
Indicator value	0.1	0.1	0.1	0.1	0.1	0.1	0.1	0.1	0.1	0.1	0.1	0.1

Reactor Coolant System Activity	4/03	5/03	6/03	7/03	8/03	9/03	10/03	11/03	12/03	1/04	2/04	3/04
Maximum activity	N/A	0.000080	0.000084	0.000123	0.000124	0.000135	0.000092	0.000129	0.000094	0.000089	0.000094	0.000114
Technical specification limit	0.2	0.2	0.2	0.2	0.2	0.2	0.2	0.2	0.2	0.2	0.2	0.2
Indicator value	N/A	0	0	0.1	0.1	0.1	0	0.1	0	0	0	0.1

Licensee Comments: none

### Reactor Coolant System Leakage



Thresholds: White > 50.0 Yellow > 100.0

#### Notes

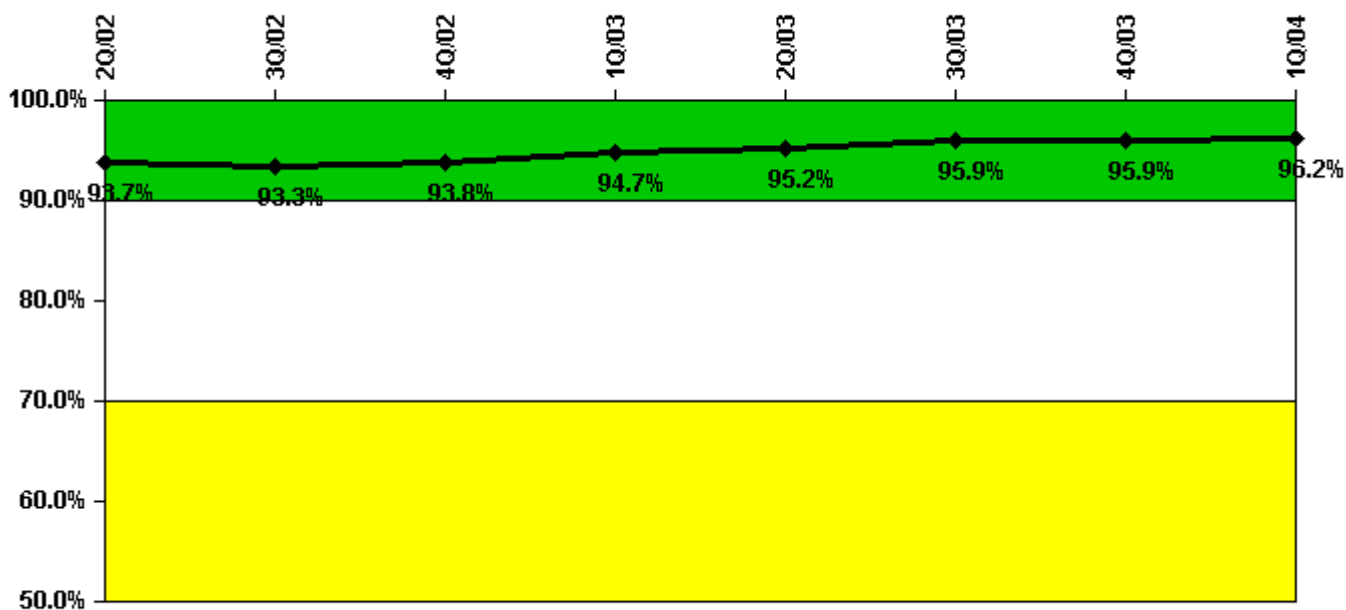
Reactor Coolant System Leakage	4/02	5/02	6/02	7/02	8/02	9/02	10/02	11/02	12/02	1/03	2/03	3/03
Maximum leakage	1.900	1.890	1.630	1.630	1.620	1.630	1.630	1.620	1.620	1.630	1.630	1.630
Technical specification limit	25.0	25.0	25.0	25.0	25.0	25.0	25.0	25.0	25.0	25.0	25.0	25.0
Indicator value	7.6	7.6	6.5	6.5	6.5	6.5	6.5	6.5	6.5	6.5	6.5	6.5

Reactor Coolant System Leakage	4/03	5/03	6/03	7/03	8/03	9/03	10/03	11/03	12/03	1/04	2/04	3/04
Maximum leakage	N/A	1.830	1.750	1.640	1.770	1.650	1.620	1.620	1.610	1.610	1.600	1.610
Technical specification limit	25.0	25.0	25.0	25.0	25.0	25.0	25.0	25.0	25.0	25.0	25.0	25.0
Indicator value	N/A	7.3	7.0	6.6	7.1	6.6	6.5	6.5	6.4	6.4	6.4	6.4

Licensee Comments: none

### Drill/Exercise Performance



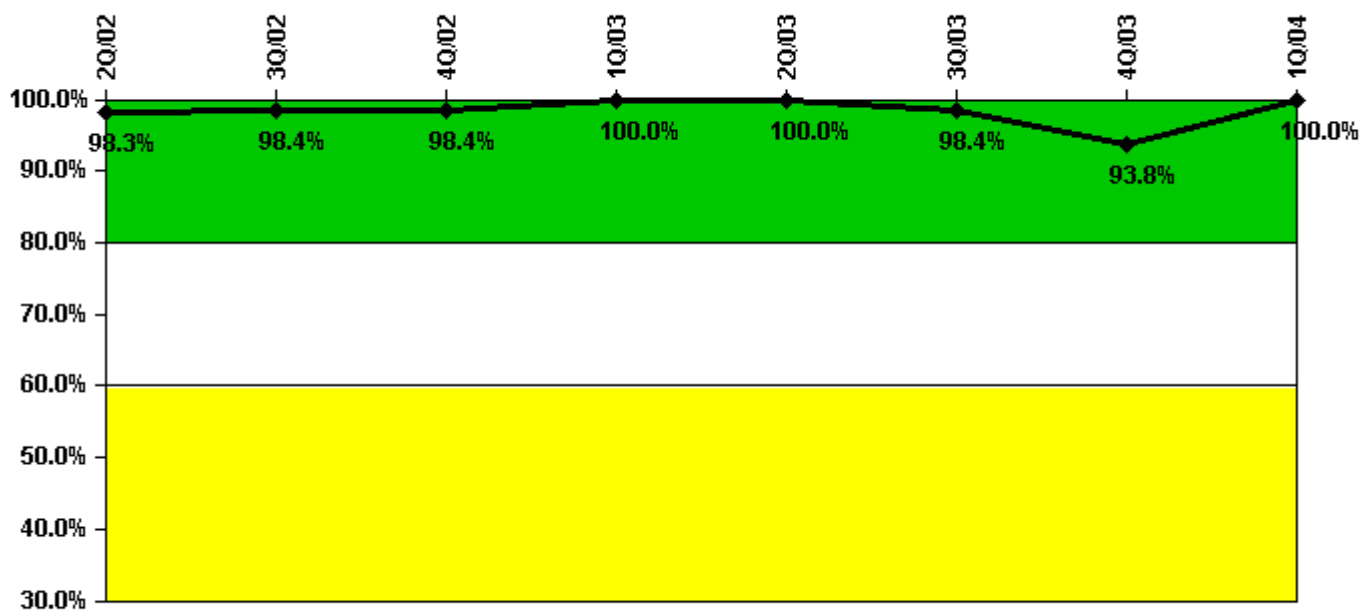
Thresholds: White < 90.0% Yellow < 70.0%

#### Notes

Drill/Exercise Performance	2Q/02	3Q/02	4Q/02	1Q/03	2Q/03	3Q/03	4Q/03	1Q/04
Successful opportunities	51.0	145.0	10.0	64.0	28.0	149.0	0	54.0
Total opportunities	51.0	154.0	10.0	65.0	28.0	156.0	0	57.0
Indicator value	93.7%	93.3%	93.8%	94.7%	95.2%	95.9%	95.9%	96.2%

Licensee Comments: none

### ERO Drill Participation



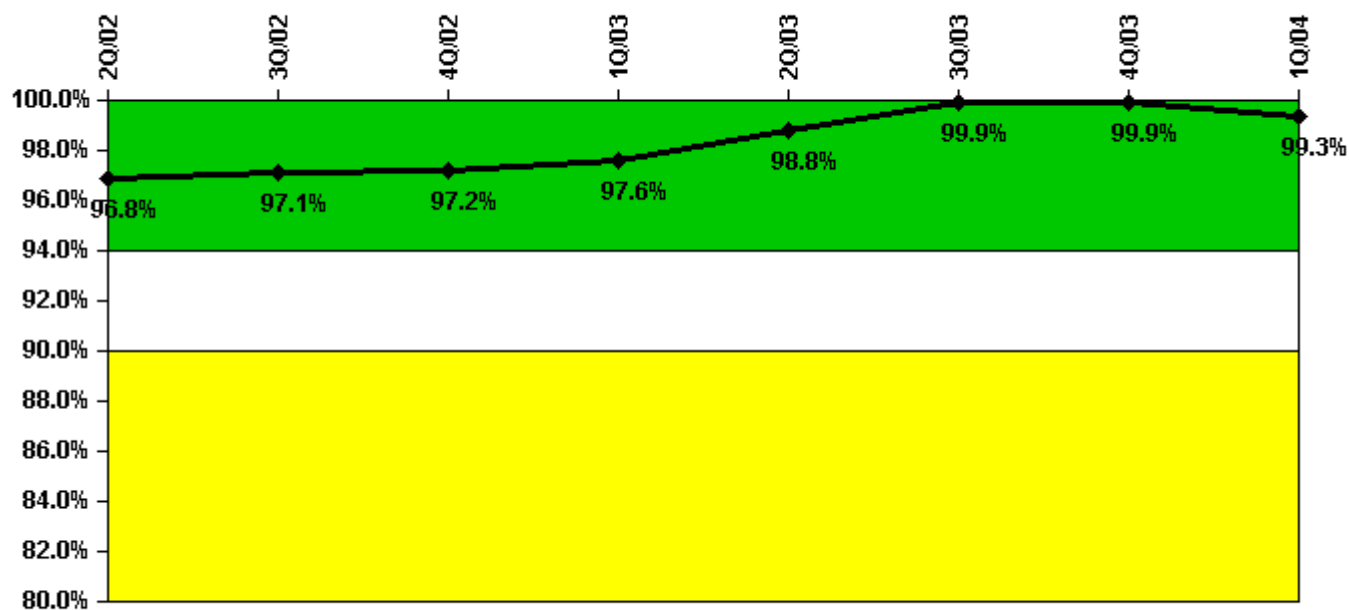
Thresholds: White < 80.0% Yellow < 60.0%

#### Notes

ERO Drill Participation	2Q/02	3Q/02	4Q/02	1Q/03	2Q/03	3Q/03	4Q/03	1Q/04
Participating Key personnel	58.0	61.0	60.0	60.0	60.0	63.0	61.0	78.0
Total Key personnel	59.0	62.0	61.0	60.0	60.0	64.0	65.0	78.0
Indicator value	98.3%	98.4%	98.4%	100.0%	100.0%	98.4%	93.8%	100.0%

Licensee Comments: none

### Alert & Notification System



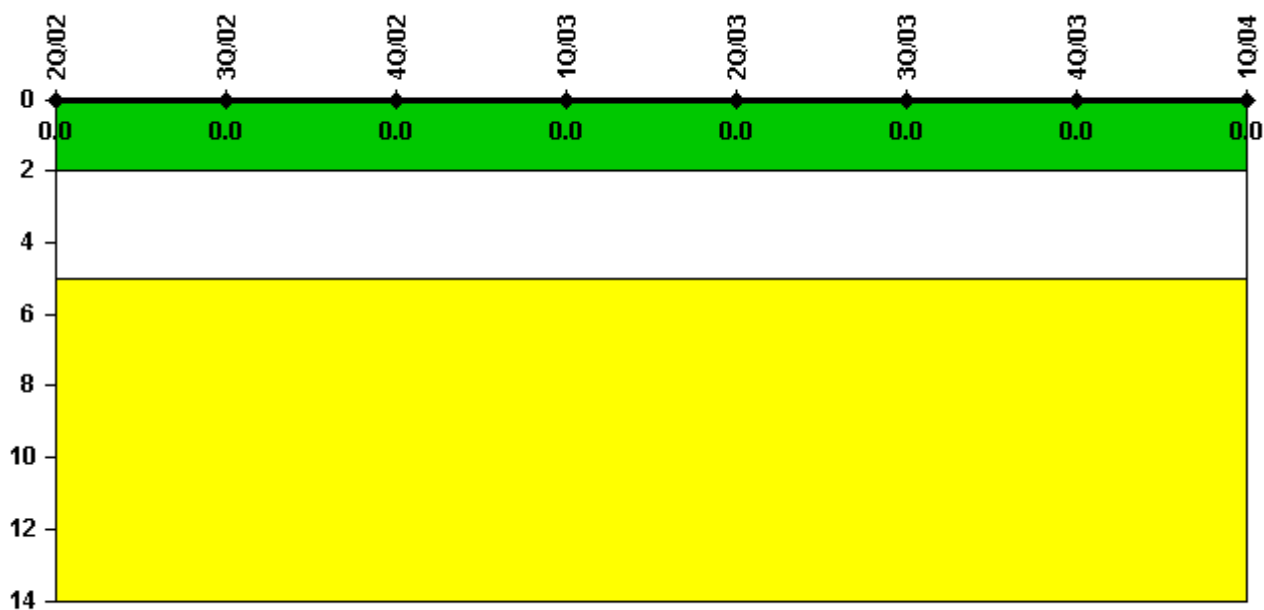
Thresholds: White < 94.0% Yellow < 90.0%

#### Notes

Alert & Notification System	2Q/02	3Q/02	4Q/02	1Q/03	2Q/03	3Q/03	4Q/03	1Q/04
Successful siren-tests	341	198	181	185	186	186	186	181
Total sirens-tests	354	206	181	186	186	186	186	186
Indicator value	96.8%	97.1%	97.2%	97.6%	98.8%	99.9%	99.9%	99.3%

Licensee Comments: none

### Occupational Exposure Control Effectiveness



Thresholds: White > 2.0 Yellow > 5.0

#### Notes

Occupational Exposure Control Effectiveness	2Q/02	3Q/02	4Q/02	1Q/03	2Q/03	3Q/03	4Q/03	1Q/04
High radiation area occurrences	0	0	0	0	0	0	0	0
Very high radiation area occurrences	0	0	0	0	0	0	0	0
Unintended exposure occurrences	0	0	0	0	0	0	0	0
<b>Indicator value</b>	<b>0</b>	<b>0</b>	<b>0</b>	<b>0</b>	<b>0</b>	<b>0</b>	<b>0</b>	<b>0</b>

Licensee Comments: none

### RETS/ODCM Radiological Effluent



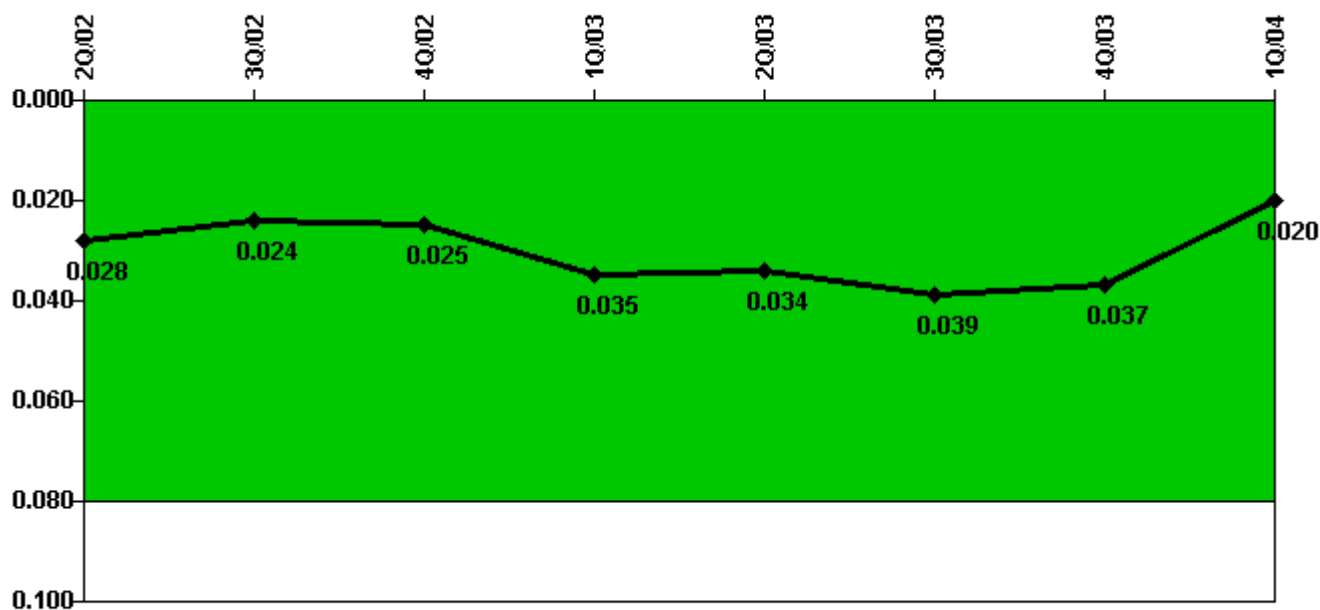
Thresholds: White > 1.0 Yellow > 3.0

**Notes**

RETS/ODCM Radiological Effluent	2Q/02	3Q/02	4Q/02	1Q/03	2Q/03	3Q/03	4Q/03	1Q/04
RETS/ODCM occurrences	0	0	0	0	0	0	0	0
<b>Indicator value</b>	<b>0</b>	<b>0</b>	<b>0</b>	<b>0</b>	<b>0</b>	<b>0</b>	<b>0</b>	<b>0</b>

Licensee Comments: none

### Protected Area Security Performance Index



Thresholds: White > 0.080

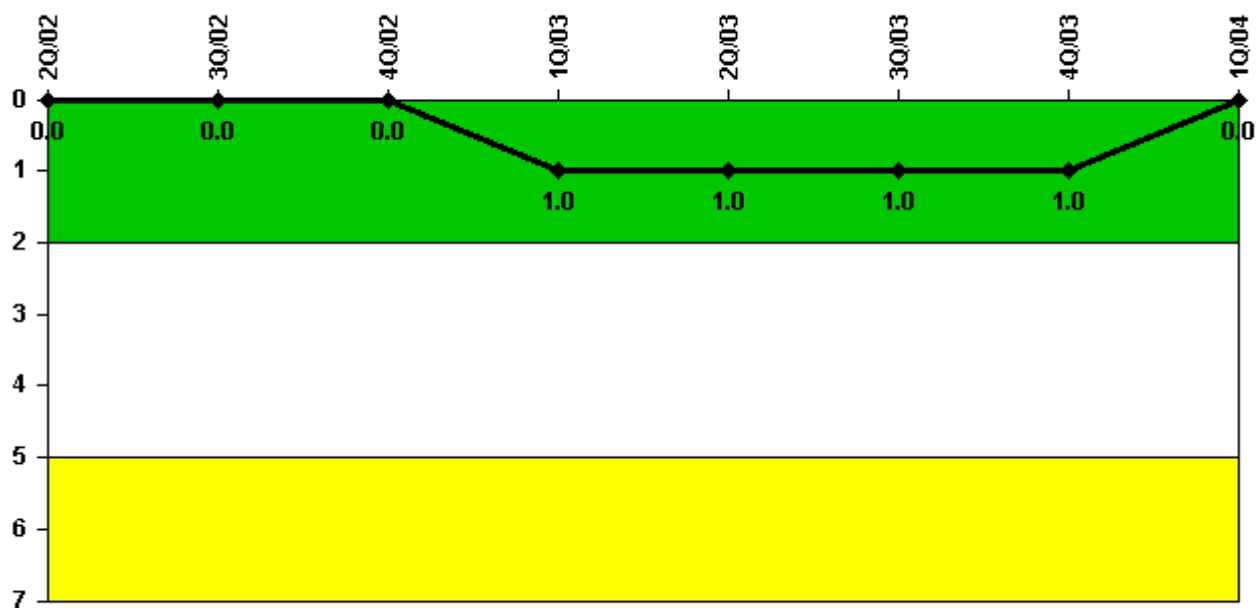
#### Notes

Protected Area Security Performance Index	2Q/02	3Q/02	4Q/02	1Q/03	2Q/03	3Q/03	4Q/03	1Q/04
IDS compensatory hours	161.07	142.80	139.82	605.38	135.40	311.73	118.28	5.43
CCTV compensatory hours	18.6	7.9	41.3	0.8	4.9	2.8	32.3	11.6
IDS normalization factor	1.90	1.90	1.90	1.90	1.90	1.90	1.90	1.90
CCTV normalization factor	1.0	1.0	1.0	1.0	1.0	1.0	1.0	1.0
<b>Index Value</b>	<b>0.028</b>	<b>0.024</b>	<b>0.025</b>	<b>0.035</b>	<b>0.034</b>	<b>0.039</b>	<b>0.037</b>	<b>0.020</b>

Licensee Comments: none



### Personnel Screening Program



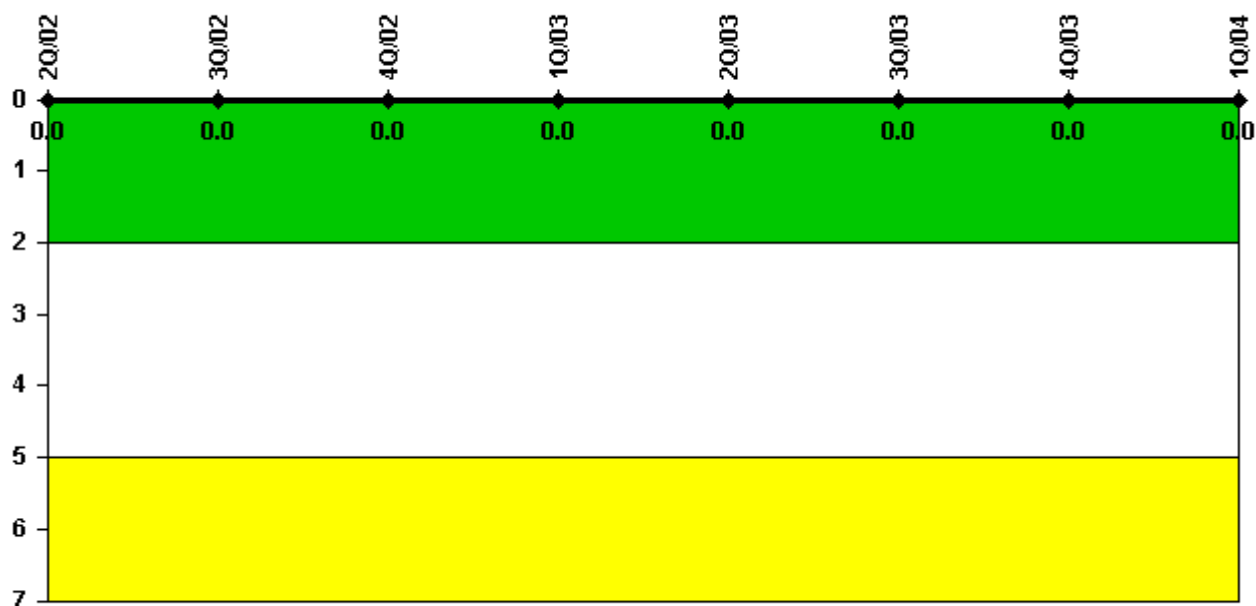
Thresholds: White > 2.0 Yellow > 5.0

#### Notes

Personnel Screening Program	2Q/02	3Q/02	4Q/02	1Q/03	2Q/03	3Q/03	4Q/03	1Q/04
Program failures	0	0	0	1	0	0	0	0
<b>Indicator value</b>	<b>0</b>	<b>0</b>	<b>0</b>	<b>1</b>	<b>1</b>	<b>1</b>	<b>1</b>	<b>0</b>

Licensee Comments: none

### FFD/Personnel Reliability



Thresholds: White > 2.0 Yellow > 5.0

### Notes

FFD/Personnel Reliability	2Q/02	3Q/02	4Q/02	1Q/03	2Q/03	3Q/03	4Q/03	1Q/04
Program Failures	0	0	0	0	0	0	0	0
<b>Indicator value</b>	<b>0</b>	<b>0</b>	<b>0</b>	<b>0</b>	<b>0</b>	<b>0</b>	<b>0</b>	<b>0</b>

Licensee Comments: none

▲ [PI Summary](#) | [Inspection Findings Summary](#) | [Reactor Oversight Process](#)

Last Modified: April 22, 2004