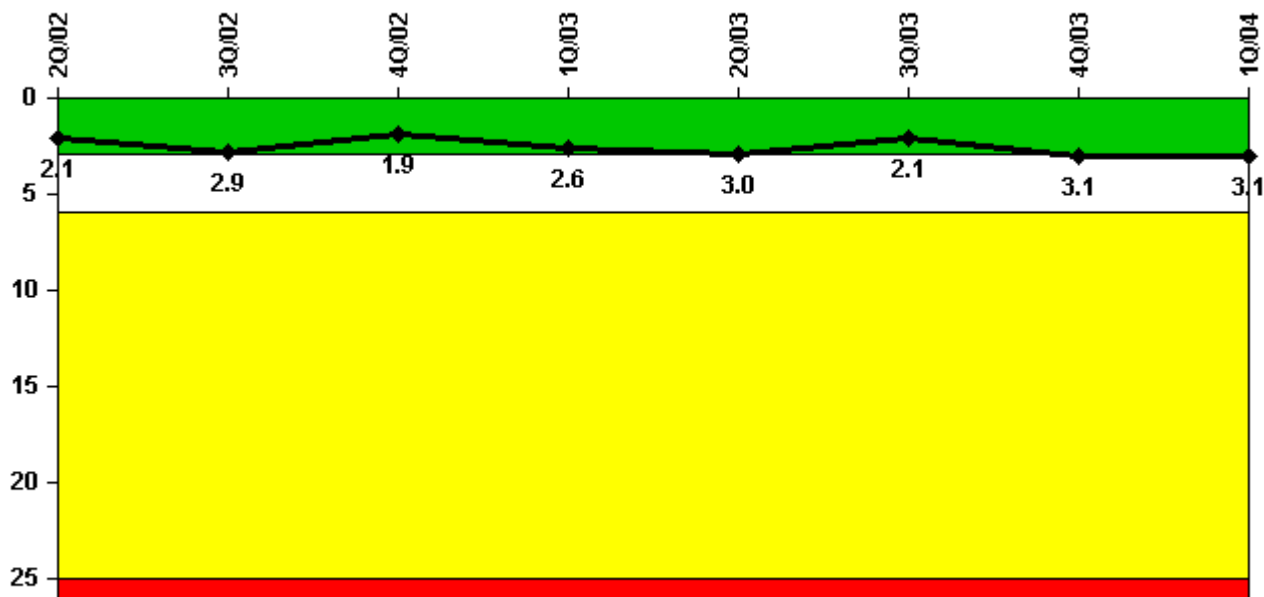


## D.C. Cook 2

### 1Q/2004 Performance Indicators

Licensee's General Comments: none

#### Unplanned Scrams per 7000 Critical Hrs



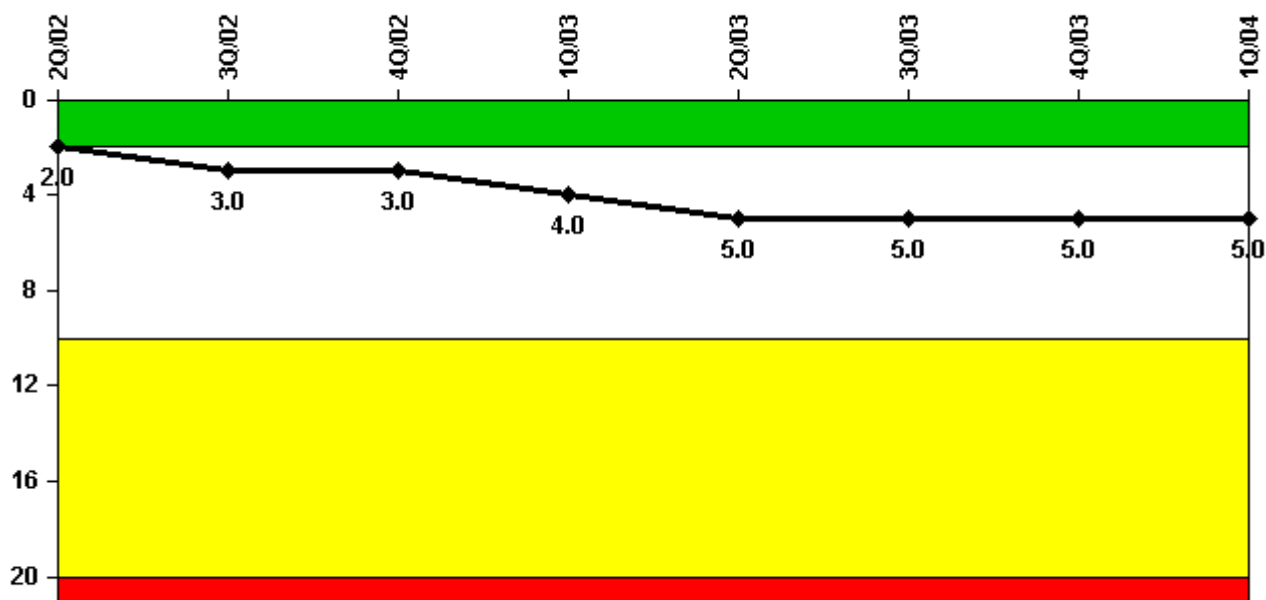
**Thresholds: White > 3.0 Yellow > 6.0 Red > 25.0**

#### Notes

Unplanned Scrams per 7000 Critical Hrs	2Q/02	3Q/02	4Q/02	1Q/03	2Q/03	3Q/03	4Q/03	1Q/04
Unplanned scrams	1.0	1.0	0	1.0	1.0	0	1.0	1.0
Critical hours	1965.5	2027.5	2209.0	1884.6	824.0	1832.1	2174.5	2052.7
<b>Indicator value</b>	<b>2.1</b>	<b>2.9</b>	<b>1.9</b>	<b>2.6</b>	<b>3.0</b>	<b>2.1</b>	<b>3.1</b>	<b>3.1</b>

Licensee Comments: none

### Scrams with Loss of Normal Heat Removal



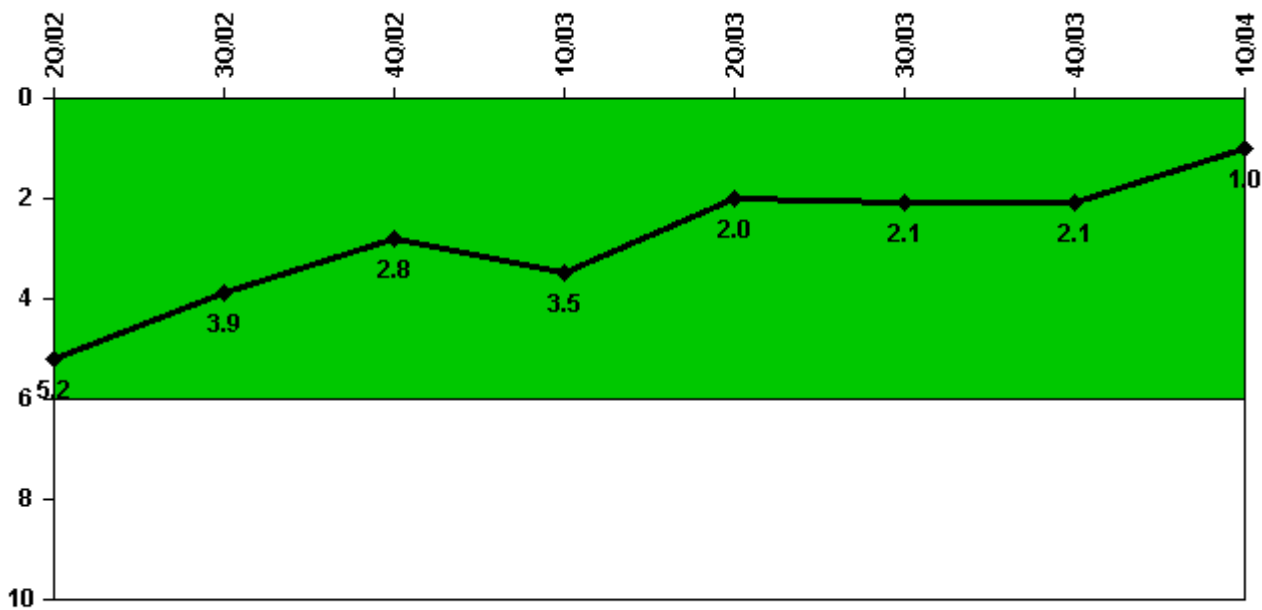
Thresholds: White > 2.0 Yellow > 10.0 Red > 20.0

#### Notes

Scrams with Loss of Normal Heat Removal	2Q/02	3Q/02	4Q/02	1Q/03	2Q/03	3Q/03	4Q/03	1Q/04
Scrams	1.0	1.0	0	1.0	1.0	0	0	0
Indicator value	2.0	3.0	3.0	4.0	5.0	5.0	5.0	5.0

Licensee Comments: none

### Unplanned Power Changes per 7000 Critical Hrs



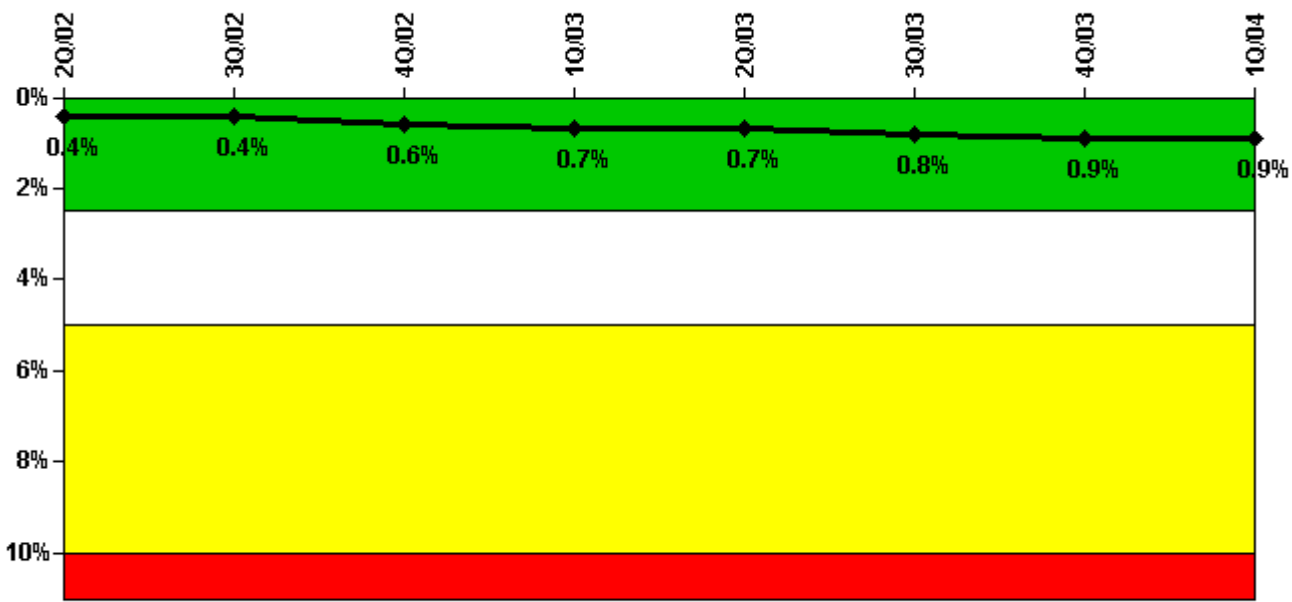
Thresholds: White > 6.0

#### Notes

Unplanned Power Changes per 7000 Critical Hrs	2Q/02	3Q/02	4Q/02	1Q/03	2Q/03	3Q/03	4Q/03	1Q/04
Unplanned power changes	2.0	1.0	0	1.0	0	1.0	0	0
Critical hours	1965.5	2027.5	2209.0	1884.6	824.0	1832.1	2174.5	2052.7
Indicator value	5.2	3.9	2.8	3.5	2.0	2.1	2.1	1.0

Licensee Comments: none

### Safety System Unavailability, Emergency AC Power



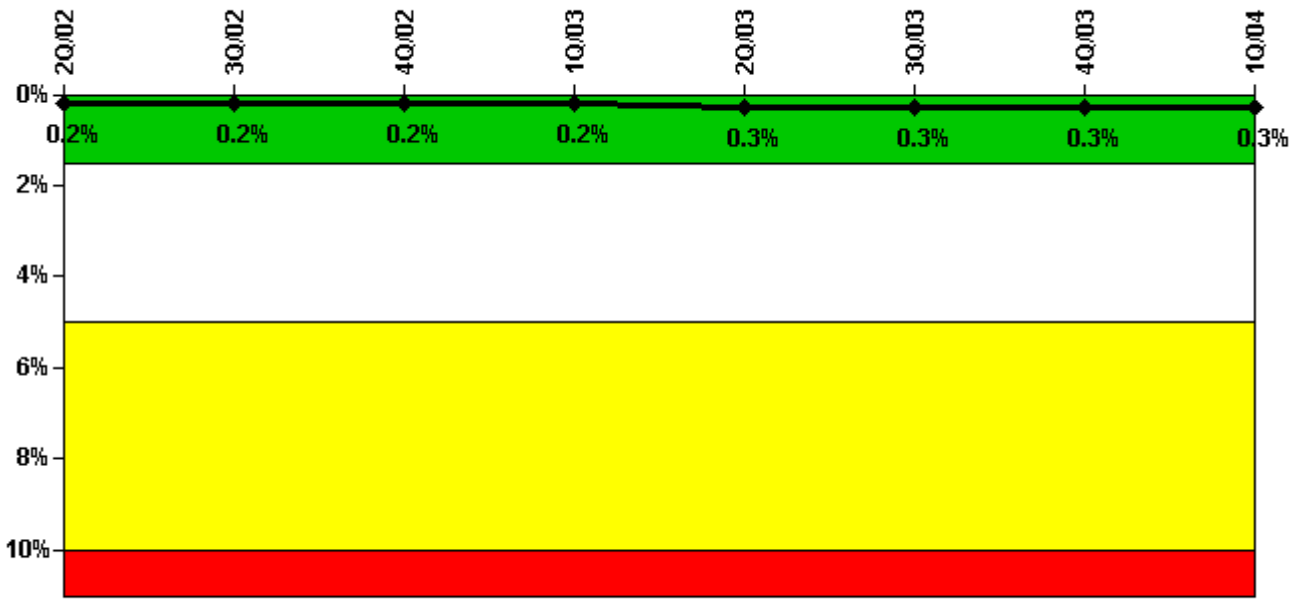
Thresholds: White > 2.5% Yellow > 5.0% Red > 10.0%

#### Notes

Safety System Unavailability, Emergency AC Power	2Q/02	3Q/02	4Q/02	1Q/03	2Q/03	3Q/03	4Q/03	1Q/04
<b>Train 1</b>								
Planned unavailable hours	11.33	0.70	0.70	33.52	0.32	21.99	1.14	18.54
Unplanned unavailable hours	0	0	81.80	49.10	0	8.63	0	0
Fault exposure hours	0	0	0	0	0	0	0	0
Effective Reset hours	0	0	0	0	0	0	0	0
Required hours	2183.00	2208.00	2209.00	2160.00	2185.00	2208.00	2209.00	2184.00
<b>Train 2</b>								
Planned unavailable hours	14.60	22.90	6.30	1.18	0.65	9.35	0.78	25.24
Unplanned unavailable hours	0	0	18.80	0	0	0	102.12	0.20
Fault exposure hours	0	0	0	0	0	0	0	0
Effective Reset hours	0	0	0	0	0	0	0	0
Required hours	2183.00	2208.00	2209.00	2160.00	1079.77	2208.00	2209.00	2184.00
<b>Indicator value</b>	<b>0.4%</b>	<b>0.4%</b>	<b>0.6%</b>	<b>0.7%</b>	<b>0.7%</b>	<b>0.8%</b>	<b>0.9%</b>	<b>0.9%</b>

Licensee Comments: none

### Safety System Unavailability, High Pressure Injection System (HPSI)



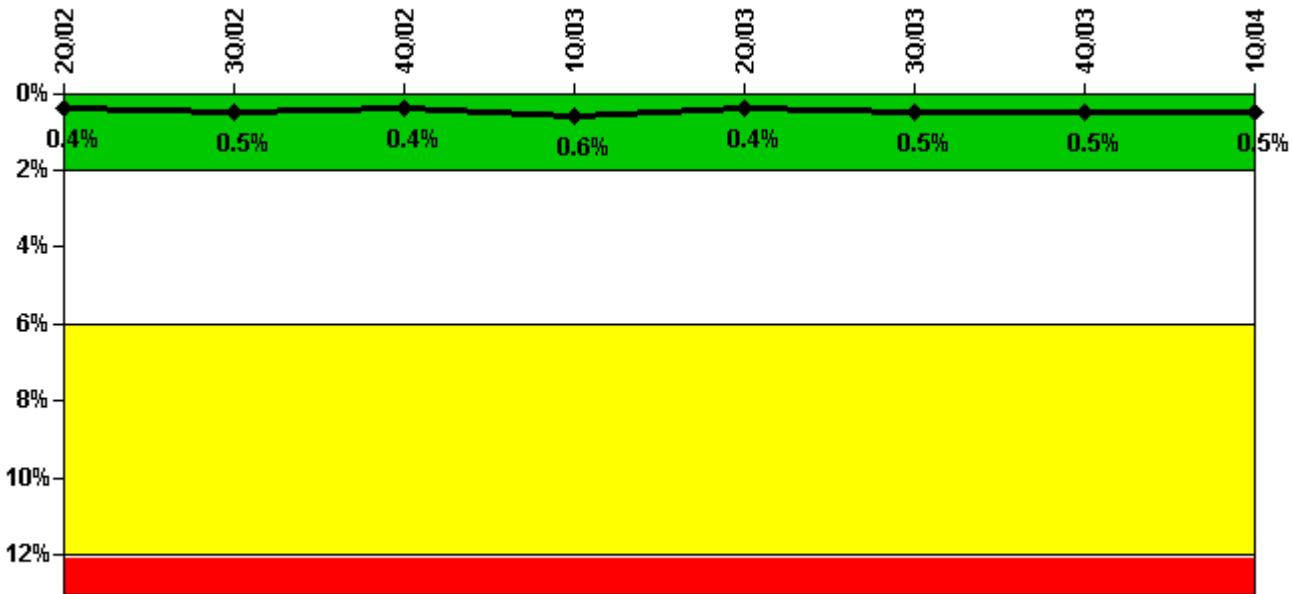
Thresholds: White > 1.5% Yellow > 5.0% Red > 10.0%

#### Notes

Safety System Unavailability, High Pressure Injection System (HPSI)	2Q/02	3Q/02	4Q/02	1Q/03	2Q/03	3Q/03	4Q/03	1Q/04
<b>Train 1</b>								
Planned unavailable hours	0	10.03	0	1.65	3.33	8.58	0	13.35
Unplanned unavailable hours	0	0	0	0	64.58	0	0	0
Fault exposure hours	0	0	0	0	0	0	0	0
Effective Reset hours	0	0	0	0	0	0	0	0
Required hours	2183.00	2118.98	2209.00	2160.00	927.64	2096.37	2209.00	2184.00
<b>Train 2</b>								
Planned unavailable hours	0	11.82	0	1.35	10.97	0	3.53	0
Unplanned unavailable hours	0	0	0	0	0	0	0	0
Fault exposure hours	0	0	0	0	0	0	0	0
Effective Reset hours	0	0	0	0	0	0	0	0
Required hours	2183.00	2208.00	2209.00	2130.15	1007.37	1886.30	2209.00	2184.00
<b>Train 3</b>								
Planned unavailable hours	0	0	23.15	8.57	0	0	0	0
Unplanned unavailable hours	0	0	0	0	0	0	0	0
Fault exposure hours	0	0	0	0	0	0	0	0
Effective Reset hours	0	0	0	0	0	0	0	0
Required hours	2183.00	2118.98	2209.00	2130.15	912.07	1886.30	2209.00	2184.00
<b>Train 4</b>								
Planned unavailable hours	5.95	0	0	1.23	0	9.08	0	0
Unplanned unavailable hours	0	18.77	0	0	0	0	13.42	0
Fault exposure hours	0	0	0	0	0	0	0	0
Effective Reset hours	0	0	0	0	0	0	0	0
Required hours	2183.00	2118.98	2209.00	2130.15	912.07	1886.30	2209.00	2184.00
<b>Indicator value</b>	<b>0.2%</b>	<b>0.2%</b>	<b>0.2%</b>	<b>0.2%</b>	<b>0.3%</b>	<b>0.3%</b>	<b>0.3%</b>	<b>0.3%</b>

Licensee Comments: none

### Safety System Unavailability, Heat Removal System (AFW)



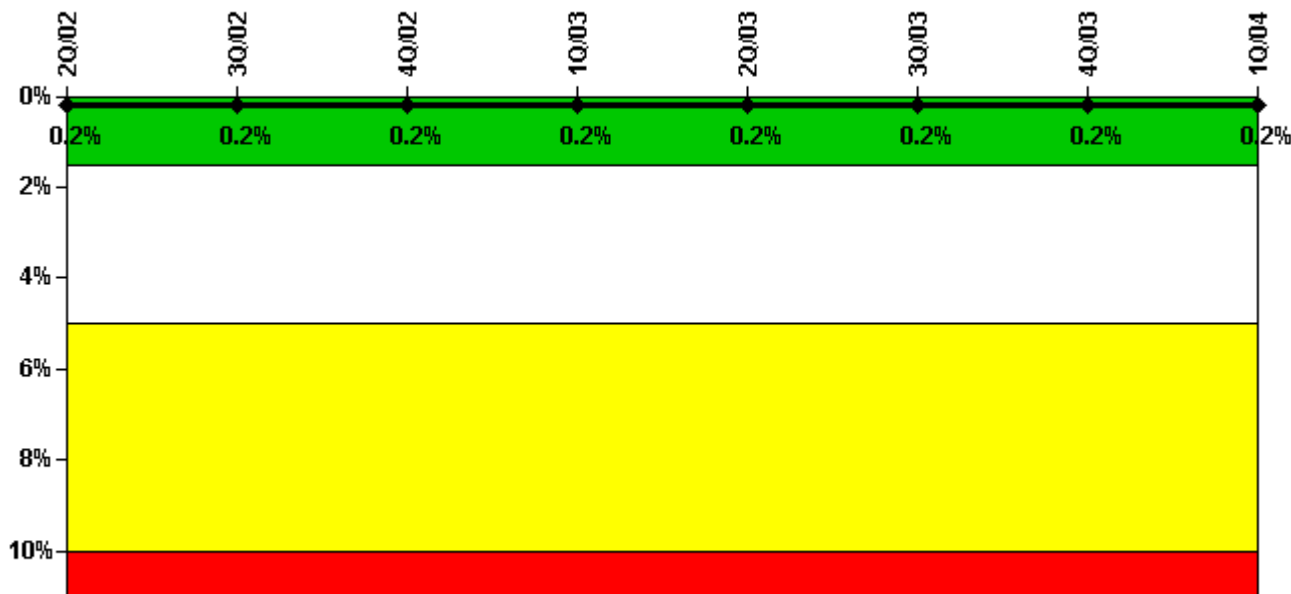
Thresholds: White > 2.0% Yellow > 6.0% Red > 12.0%

#### Notes

Safety System Unavailability, Heat Removal System (AFW)	2Q/02	3Q/02	4Q/02	1Q/03	2Q/03	3Q/03	4Q/03	1Q/04
<b>Train 1</b>								
Planned unavailable hours	0	6.85	0	36.12	0	6.05	4.62	0
Unplanned unavailable hours	0	27.33	0	0	0	0	0.05	0
Fault exposure hours	0	0	0	0	0	0	0	0
Effective Reset hours	0	0	0	0	0	0	0	0
Required hours	2183.00	2118.98	2209.00	2132.20	912.07	1886.30	2209.00	2184.00
<b>Train 2</b>								
Planned unavailable hours	9.23	9.05	0	29.38	0	0	0	5.53
Unplanned unavailable hours	6.08	0	0	59.48	0	0	0.07	0
Fault exposure hours	0	0	0	0	0	0	0	0
Effective Reset hours	0	0	0	0	0	0	0	0
Required hours	2183.00	2118.98	2209.00	2131.20	912.07	1886.30	2209.00	2184.00
<b>Train 3</b>								
Planned unavailable hours	0	23.93	0	9.03	0	0	20.90	0
Unplanned unavailable hours	0	0	0	0	0	0	0	0
Fault exposure hours	0	0	0	0	0	0	0	0
Effective Reset hours	0	0	0	0	0	0	0	0
Required hours	2183.00	2118.98	2209.00	2131.20	912.07	1886.30	2209.00	2184.00
<b>Indicator value</b>	<b>0.4%</b>	<b>0.5%</b>	<b>0.4%</b>	<b>0.6%</b>	<b>0.4%</b>	<b>0.5%</b>	<b>0.5%</b>	<b>0.5%</b>

Licensee Comments: none

### Safety System Unavailability, Residual Heat Removal System



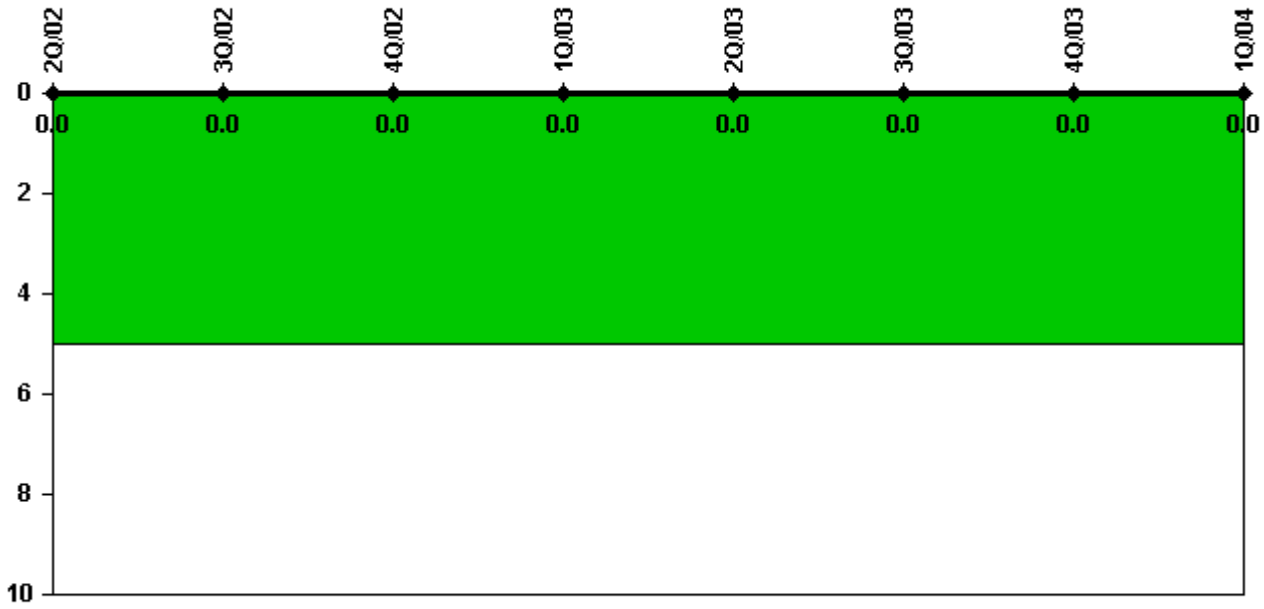
Thresholds: White > 1.5% Yellow > 5.0% Red > 10.0%

#### Notes

Safety System Unavailability, Residual Heat Removal System	2Q/02	3Q/02	4Q/02	1Q/03	2Q/03	3Q/03	4Q/03	1Q/04
<b>Train 1</b>								
Planned unavailable hours	0	8.77	8.05	0	0	0	0	0
Unplanned unavailable hours	0	0	0	0	0	0	0	0
Fault exposure hours	0	0	0	0	0	0	0	0
Effective Reset hours	0	0	0	0	0	0	0	0
Required hours	2183.00	2208.00	2209.00	2160.00	1838.30	2208.00	2209.00	2184.00
<b>Train 2</b>								
Planned unavailable hours	0	10.20	6.03	0	0	10.67	14.18	0
Unplanned unavailable hours	0	0	0	0	0	0	17.45	0
Fault exposure hours	0	0	0	0	0	0	0	0
Effective Reset hours	0	0	0	0	0	0	0	0
Required hours	2183.00	2208.00	2209.00	2160.00	1838.30	2208.00	2209.00	2184.00
<b>Indicator value</b>	<b>0.2%</b>	<b>0.2%</b>	<b>0.2%</b>	<b>0.2%</b>	<b>0.2%</b>	<b>0.2%</b>	<b>0.2%</b>	<b>0.2%</b>

Licensee Comments: none

### Safety System Functional Failures (PWR)



Thresholds: White > 5.0

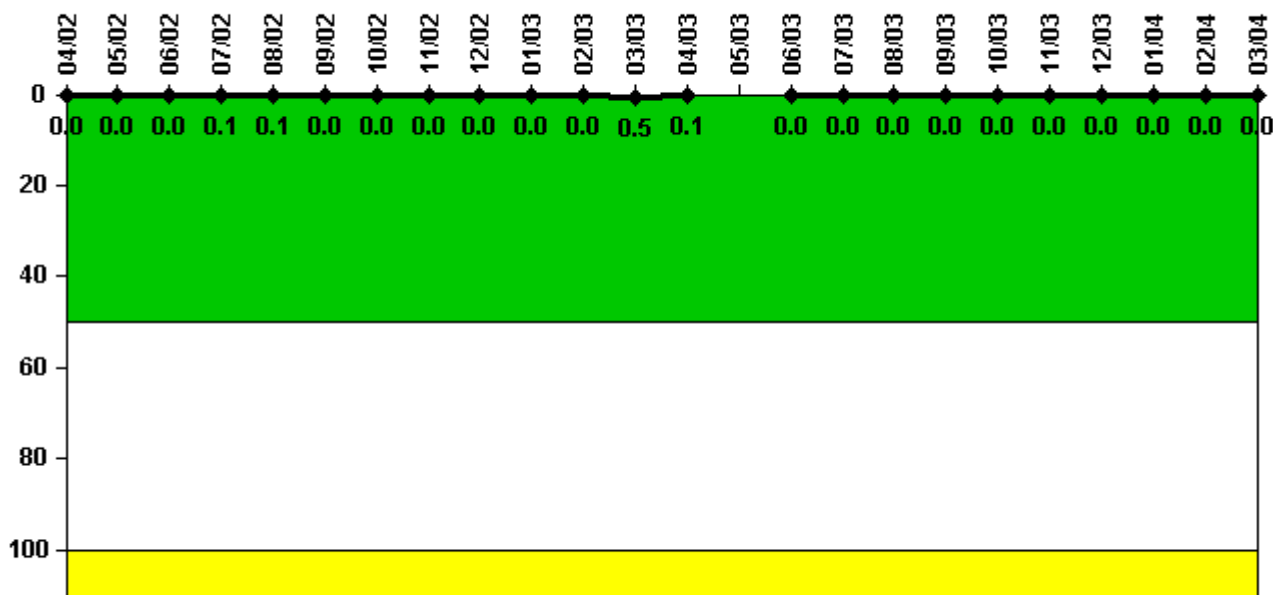
#### Notes

Safety System Functional Failures (PWR)	2Q/02	3Q/02	4Q/02	1Q/03	2Q/03	3Q/03	4Q/03	1Q/04
Safety System Functional Failures	0	0	0	0	0	0	0	0
Indicator value	0	0	0	0	0	0	0	0

Licensee Comments: none



### Reactor Coolant System Activity



Thresholds: White > 50.0 Yellow > 100.0

**Notes**

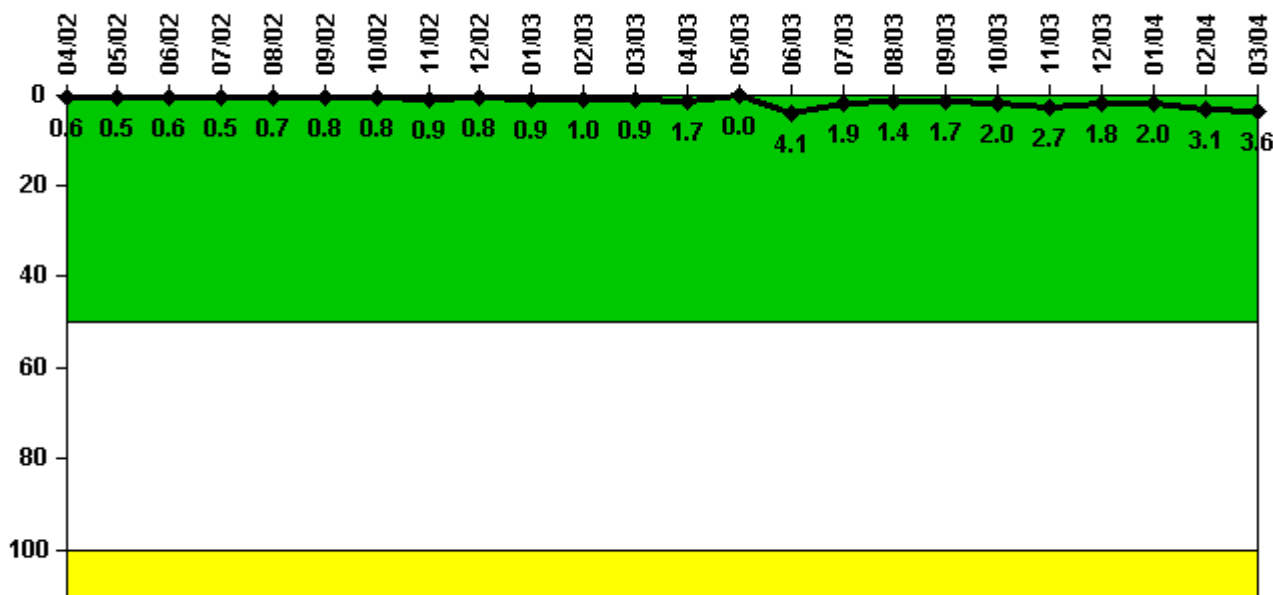
Reactor Coolant System Activity	4/02	5/02	6/02	7/02	8/02	9/02	10/02	11/02	12/02	1/03	2/03	3/03
Maximum activity	0.000242	0.000214	0.000238	0.001100	0.000641	0.000316	0.000359	0.000324	0.000313	0.000313	0.000368	0.004970
Technical specification limit	1.0	1.0	1.0	1.0	1.0	1.0	1.0	1.0	1.0	1.0	1.0	1.0
Indicator value	0	0	0	0.1	0.1	0	0	0	0	0	0	0.5

Reactor Coolant System Activity	4/03	5/03	6/03	7/03	8/03	9/03	10/03	11/03	12/03	1/04	2/04	3/04
Maximum activity	0.001070	N/A	0.000159	0.000217	0.000175	0.000188	0.000196	0.000201	0.000215	0.000219	0.000242	0.000243
Technical specification limit	1.0	1.0	1.0	1.0	1.0	1.0	1.0	1.0	1.0	1.0	1.0	1.0
Indicator value	0.1	N/A	0	0	0	0	0	0	0	0	0	0

Licensee Comments: none

### Reactor Coolant System Leakage



Thresholds: White > 50.0 Yellow > 100.0

#### Notes

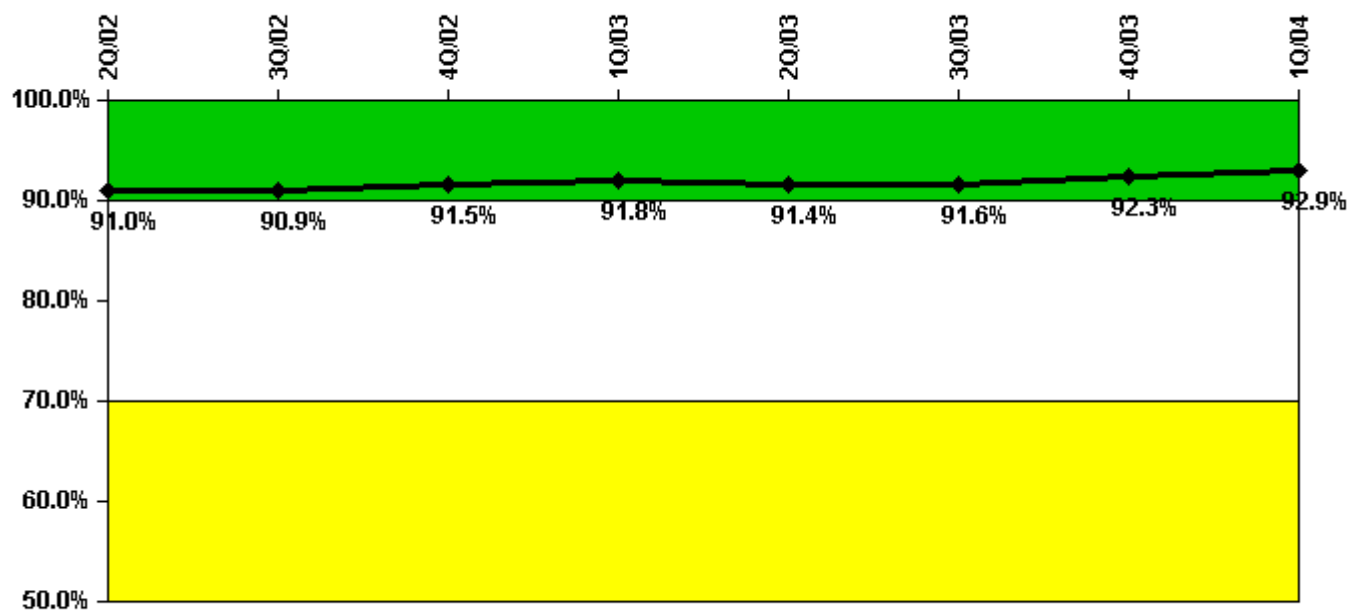
Reactor Coolant System Leakage	4/02	5/02	6/02	7/02	8/02	9/02	10/02	11/02	12/02	1/03	2/03	3/03
Maximum leakage	0.071	0.057	0.064	0.058	0.080	0.086	0.090	0.100	0.090	0.096	0.110	0.097
Technical specification limit	11.0	11.0	11.0	11.0	11.0	11.0	11.0	11.0	11.0	11.0	11.0	11.0
Indicator value	0.6	0.5	0.6	0.5	0.7	0.8	0.8	0.9	0.8	0.9	1.0	0.9

Reactor Coolant System Leakage	4/03	5/03	6/03	7/03	8/03	9/03	10/03	11/03	12/03	1/04	2/04	3/04
Maximum leakage	0.184	0	0.450	0.211	0.152	0.190	0.220	0.294	0.193	0.225	0.336	0.399
Technical specification limit	11.0	11.0	11.0	11.0	11.0	11.0	11.0	11.0	11.0	11.0	11.0	11.0
Indicator value	1.7	0	4.1	1.9	1.4	1.7	2.0	2.7	1.8	2.0	3.1	3.6

Licensee Comments: none

### Drill/Exercise Performance



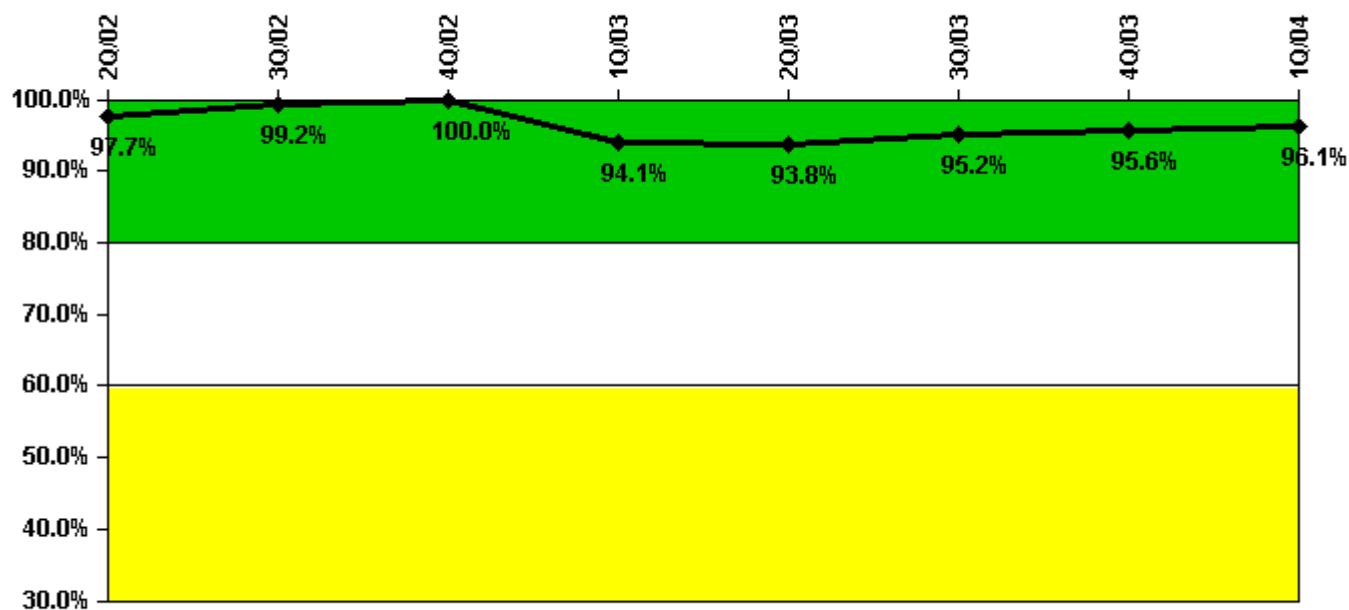
Thresholds: White < 90.0% Yellow < 70.0%

### Notes

Drill/Exercise Performance	2Q/02	3Q/02	4Q/02	1Q/03	2Q/03	3Q/03	4Q/03	1Q/04
Successful opportunities	24.0	140.0	149.0	85.0	30.0	176.0	83.0	132.0
Total opportunities	34.0	150.0	159.0	87.0	33.0	192.0	90.0	137.0
Indicator value	91.0%	90.9%	91.5%	91.8%	91.4%	91.6%	92.3%	92.9%

Licensee Comments: none

### ERO Drill Participation



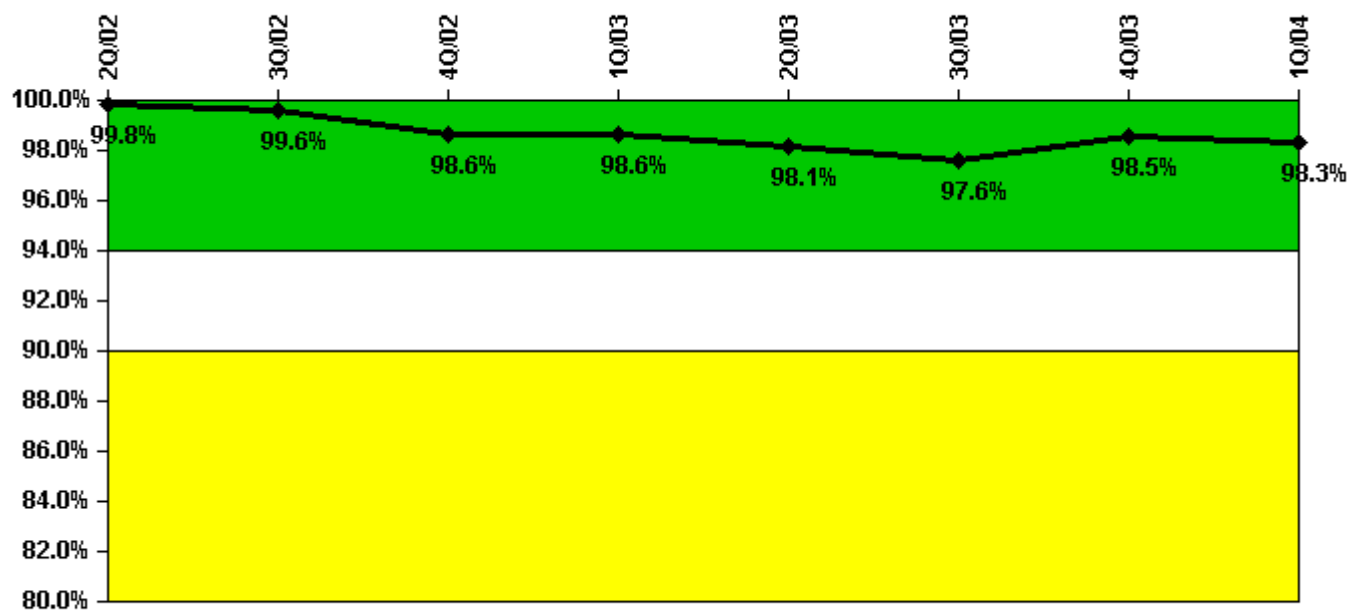
Thresholds: White < 80.0% Yellow < 60.0%

#### Notes

ERO Drill Participation	2Q/02	3Q/02	4Q/02	1Q/03	2Q/03	3Q/03	4Q/03	1Q/04
Participating Key personnel	125.0	130.0	131.0	143.0	135.0	138.0	129.0	124.0
Total Key personnel	128.0	131.0	131.0	152.0	144.0	145.0	135.0	129.0
Indicator value	97.7%	99.2%	100.0%	94.1%	93.8%	95.2%	95.6%	96.1%

Licensee Comments: none

### Alert & Notification System



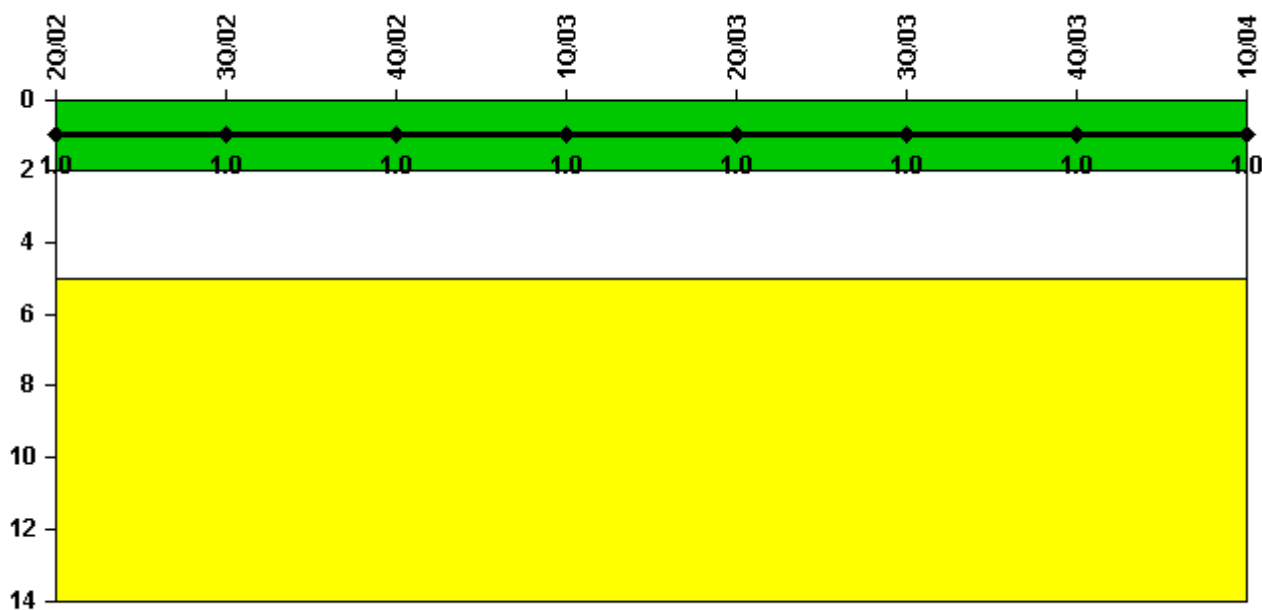
Thresholds: White < 94.0% Yellow < 90.0%

#### Notes

Alert & Notification System	2Q/02	3Q/02	4Q/02	1Q/03	2Q/03	3Q/03	4Q/03	1Q/04
Successful siren-tests	209	209	200	210	205	205	207	209
Total sirens-tests	210	210	210	210	210	210	210	210
Indicator value	99.8%	99.6%	98.6%	98.6%	98.1%	97.6%	98.5%	98.3%

Licensee Comments: none

### Occupational Exposure Control Effectiveness



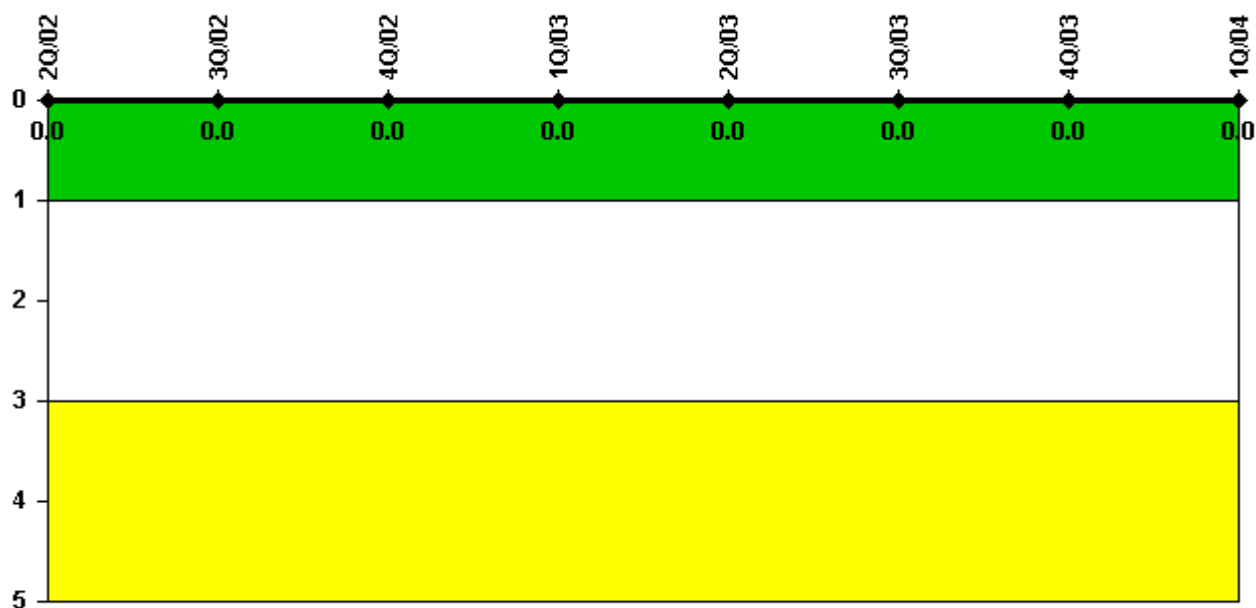
Thresholds: White > 2.0 Yellow > 5.0

#### Notes

Occupational Exposure Control Effectiveness	2Q/02	3Q/02	4Q/02	1Q/03	2Q/03	3Q/03	4Q/03	1Q/04
High radiation area occurrences	1	0	0	0	0	0	0	0
Very high radiation area occurrences	0	0	0	0	0	0	0	0
Unintended exposure occurrences	0	0	0	0	1	0	0	0
<b>Indicator value</b>	<b>1</b>	<b>1</b>	<b>1</b>	<b>1</b>	<b>1</b>	<b>1</b>	<b>1</b>	<b>1</b>

Licensee Comments: none

### RETS/ODCM Radiological Effluent



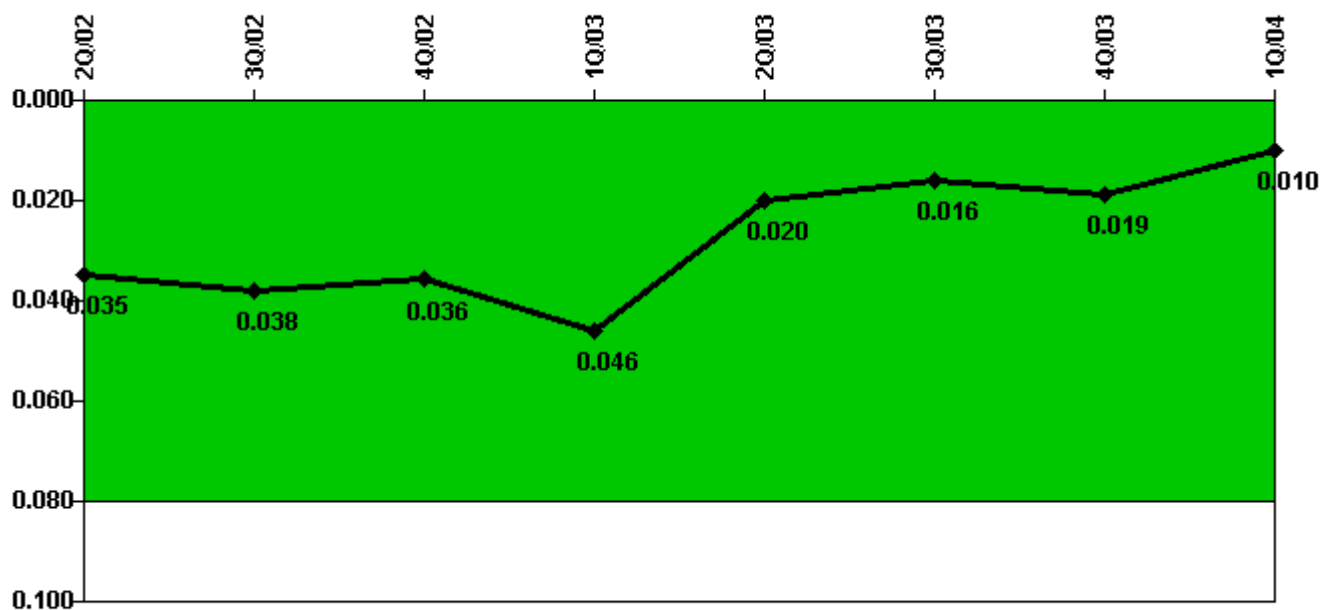
Thresholds: White > 1.0 Yellow > 3.0

**Notes**

RETS/ODCM Radiological Effluent	2Q/02	3Q/02	4Q/02	1Q/03	2Q/03	3Q/03	4Q/03	1Q/04
RETS/ODCM occurrences	0	0	0	0	0	0	0	0
<b>Indicator value</b>	<b>0</b>	<b>0</b>	<b>0</b>	<b>0</b>	<b>0</b>	<b>0</b>	<b>0</b>	<b>0</b>

Licensee Comments: none

### Protected Area Security Performance Index



Thresholds: White > 0.080

#### Notes

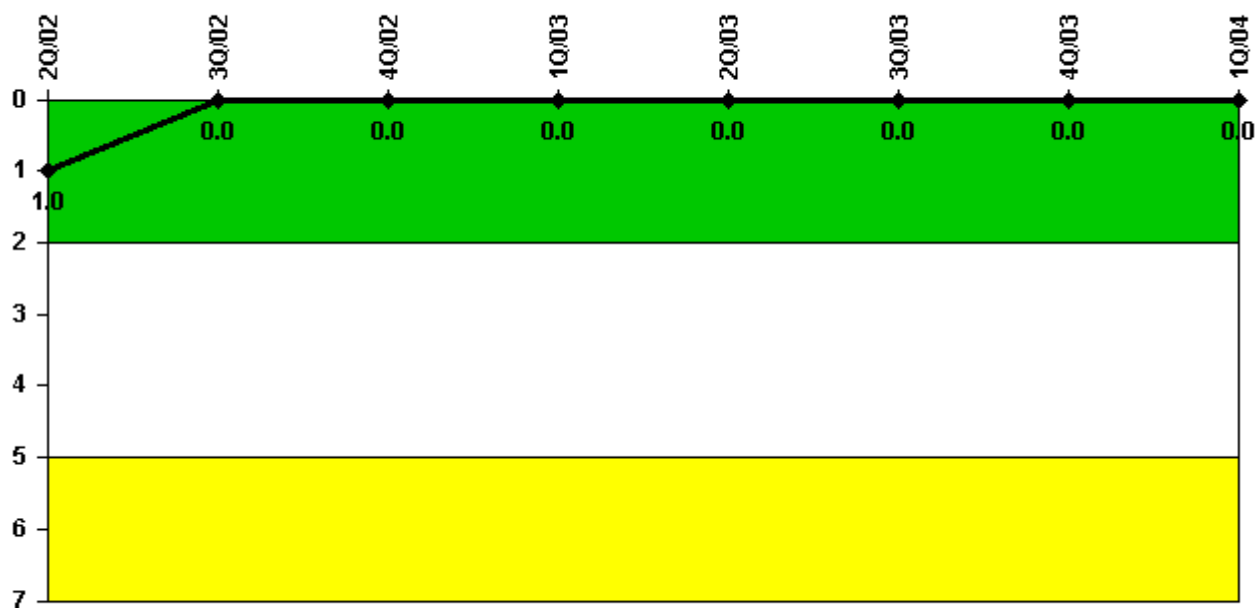
Protected Area Security Performance Index	2Q/02	3Q/02	4Q/02	1Q/03	2Q/03	3Q/03	4Q/03	1Q/04
IDS compensatory hours	680.50	111.70	52.10	263.40	25.70	25.20	139.90	94.90
CCTV compensatory hours	0	0	4.4	16.2	0	0	0	0
IDS normalization factor	1.40	1.40	1.40	1.40	1.40	1.40	1.40	1.60
CCTV normalization factor	1.0	1.0	1.0	1.0	1.0	1.0	1.0	1.1
<b>Index Value</b>	<b>0.035</b>	<b>0.038</b>	<b>0.036</b>	<b>0.046</b>	<b>0.020</b>	<b>0.016</b>	<b>0.019</b>	<b>0.010</b>

Licensee Comments:

1Q/04: In accordance with NEI 99-02, compensatory hours associated with scheduled equipment upgrades that are being performed and those compensatory hours for configuration issues associated with equipment upgrades are excluded.



### Personnel Screening Program



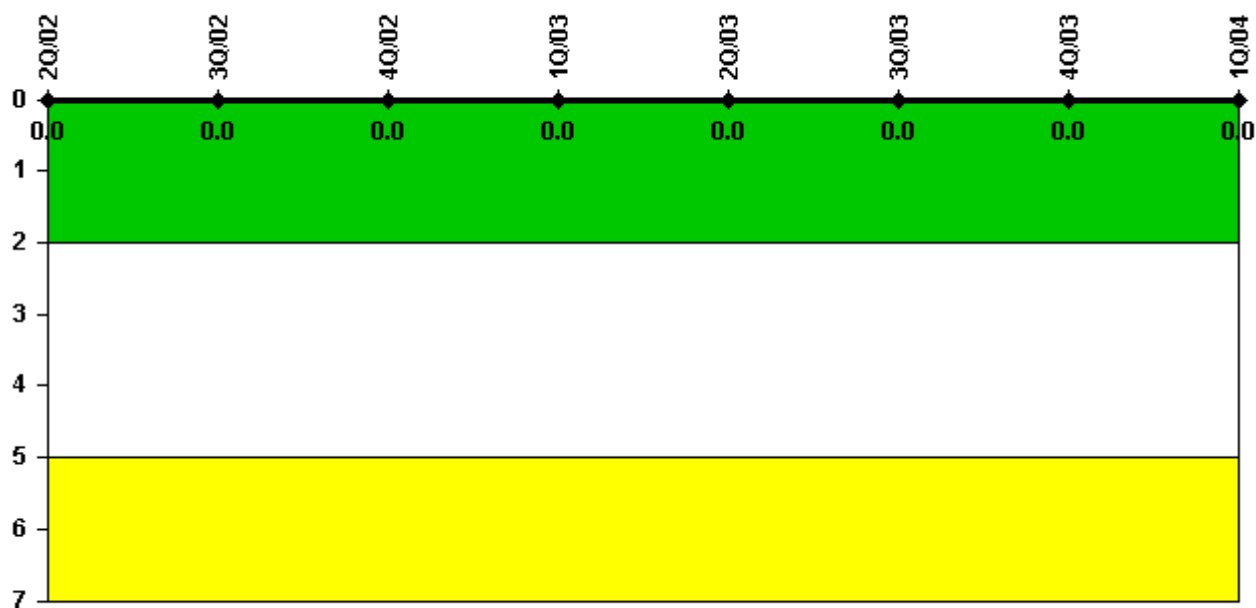
Thresholds: White > 2.0 Yellow > 5.0

#### Notes

Personnel Screening Program	2Q/02	3Q/02	4Q/02	1Q/03	2Q/03	3Q/03	4Q/03	1Q/04
Program failures	0	0	0	0	0	0	0	0
<b>Indicator value</b>	<b>1</b>	<b>0</b>	<b>0</b>	<b>0</b>	<b>0</b>	<b>0</b>	<b>0</b>	<b>0</b>

Licensee Comments: none

### FFD/Personnel Reliability



Thresholds: White > 2.0 Yellow > 5.0

#### Notes

FFD/Personnel Reliability	2Q/02	3Q/02	4Q/02	1Q/03	2Q/03	3Q/03	4Q/03	1Q/04
Program Failures	0	0	0	0	0	0	0	0
<b>Indicator value</b>	<b>0</b>	<b>0</b>	<b>0</b>	<b>0</b>	<b>0</b>	<b>0</b>	<b>0</b>	<b>0</b>

Licensee Comments: none

▲ [PI Summary](#) | [Inspection Findings Summary](#) | [Reactor Oversight Process](#)

Last Modified: April 22, 2004