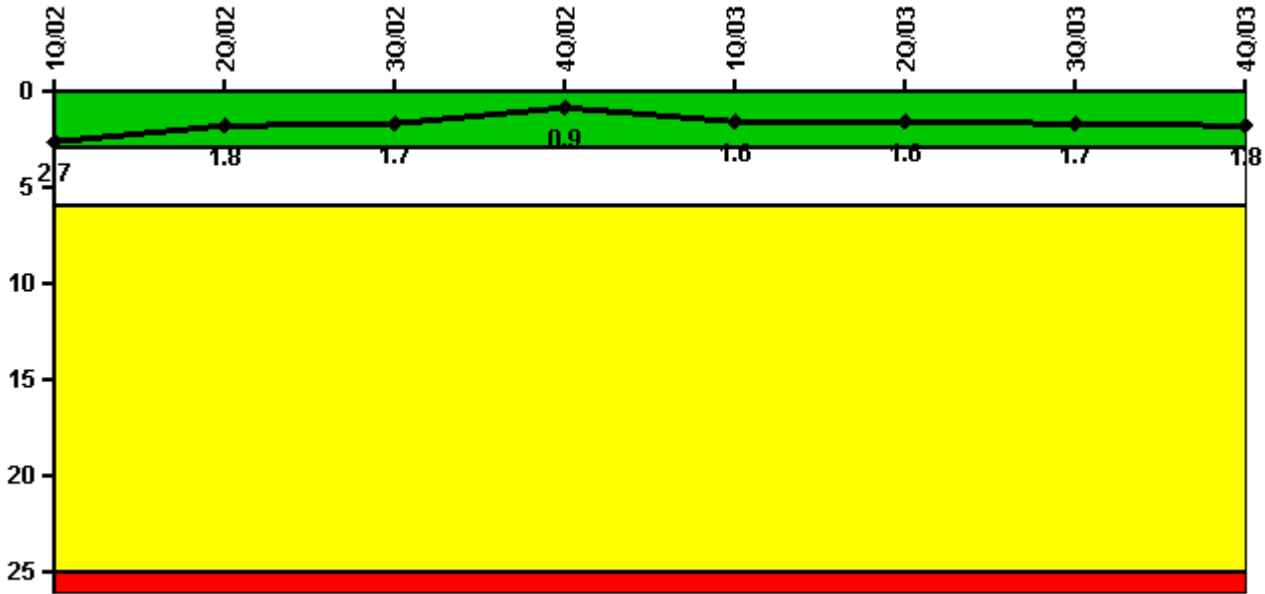


Watts Bar 1

4Q/2003 Performance Indicators

Licensee's General Comments: none

Unplanned Scrams per 7000 Critical Hrs



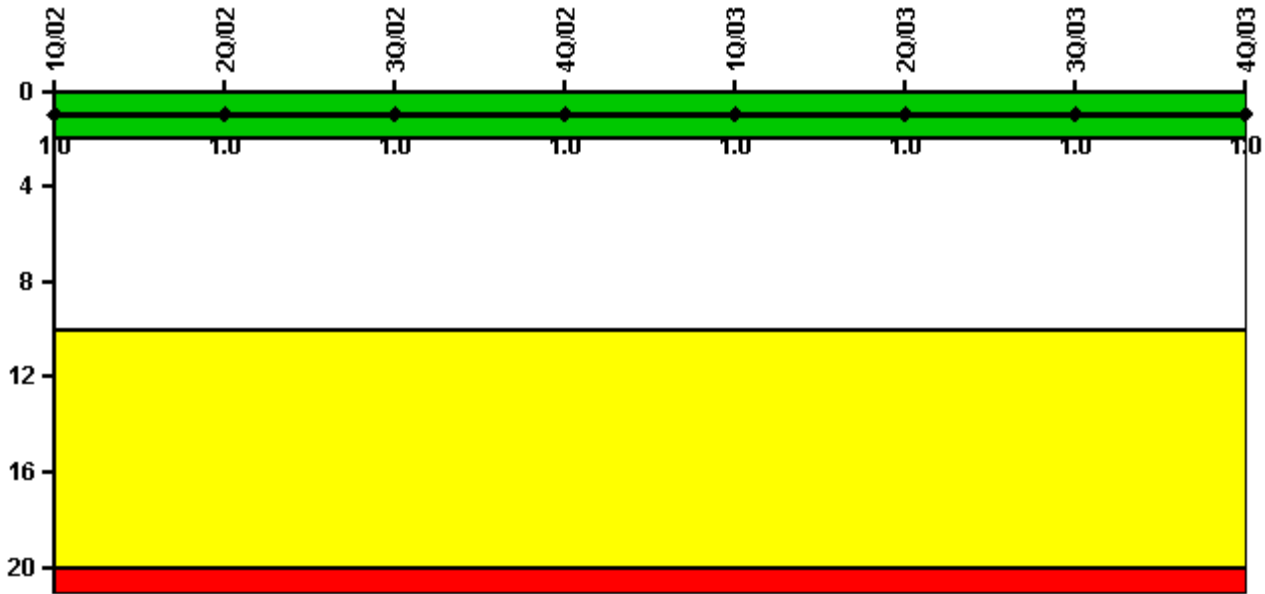
Thresholds: White > 3.0 Yellow > 6.0 Red > 25.0

Notes

Unplanned Scrams per 7000 Critical Hrs	1Q/02	2Q/02	3Q/02	4Q/02	1Q/03	2Q/03	3Q/03	4Q/03
Unplanned scrams	0	0	1.0	0	1.0	0	1.0	0
Critical hours	1611.3	2060.8	2185.5	2209.0	2036.0	2183.0	1626.5	1752.4
Indicator value	2.7	1.8	1.7	0.9	1.6	1.6	1.7	1.8

Licensee Comments: none

Scrams with Loss of Normal Heat Removal



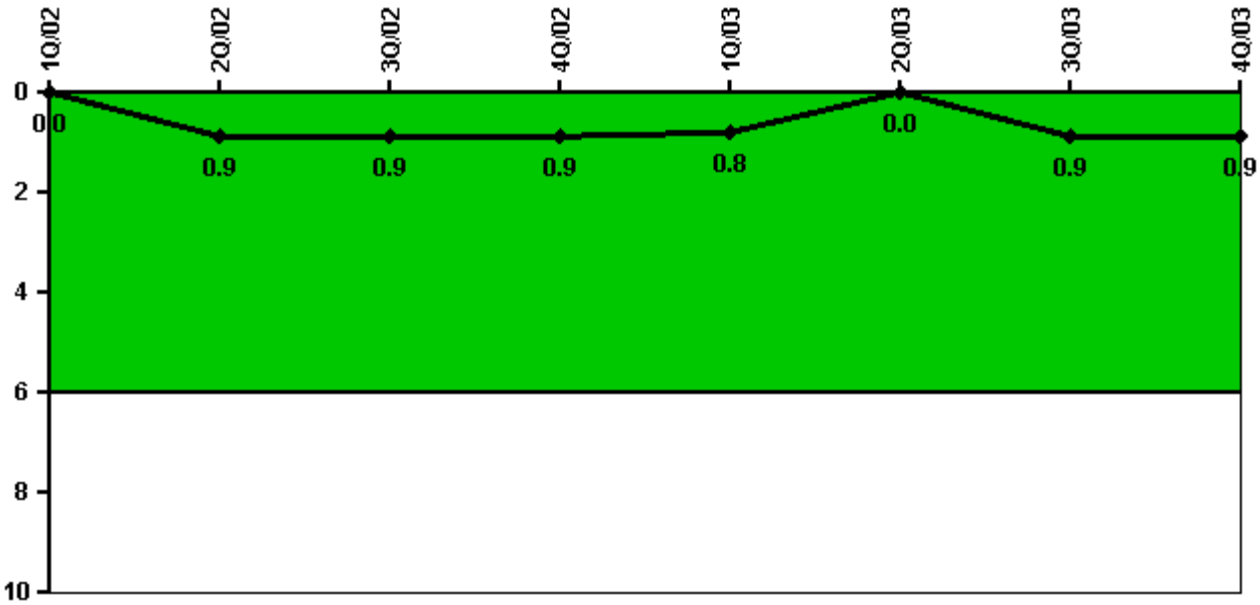
Thresholds: White > 2.0 Yellow > 10.0 Red > 20.0

Notes

Scrams with Loss of Normal Heat Removal	1Q/02	2Q/02	3Q/02	4Q/02	1Q/03	2Q/03	3Q/03	4Q/03
Scrams	0	0	0	0	0	0	0	0
Indicator value	1.0	1.0	1.0	1.0	1.0	1.0	1.0	1.0

Licensee Comments: none

Unplanned Power Changes per 7000 Critical Hrs



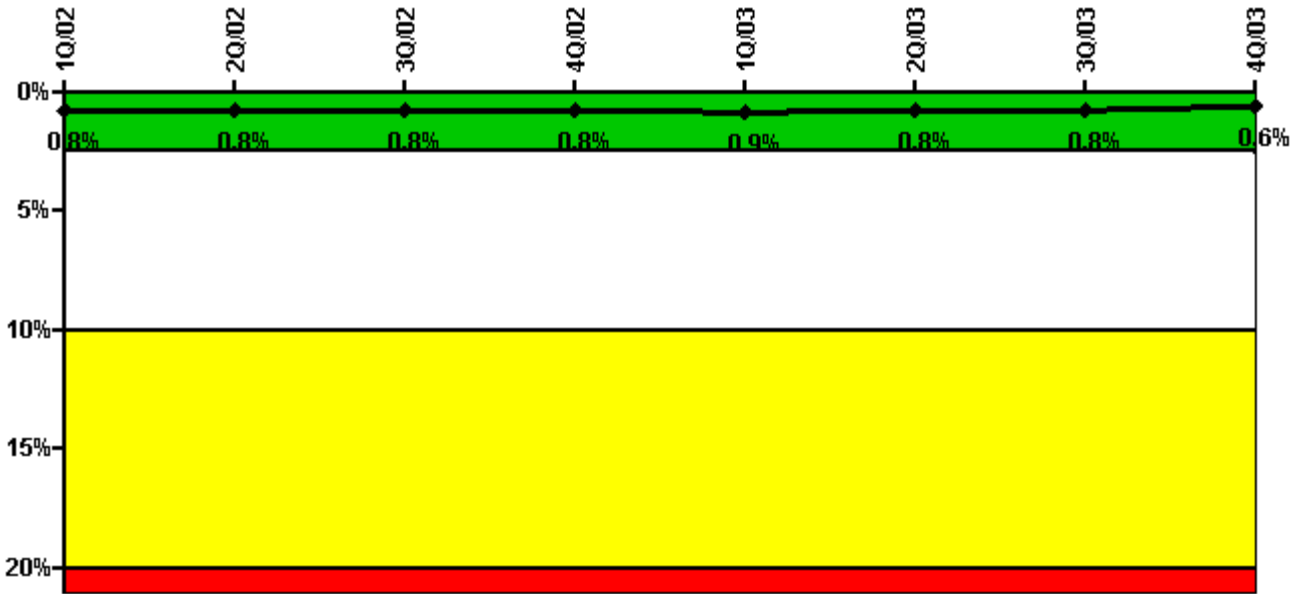
Thresholds: White > 6.0

Notes

Unplanned Power Changes per 7000 Critical Hrs	1Q/02	2Q/02	3Q/02	4Q/02	1Q/03	2Q/03	3Q/03	4Q/03
Unplanned power changes	0	1.0	0	0	0	0	1.0	0
Critical hours	1611.3	2060.8	2185.5	2209.0	2036.0	2183.0	1626.5	1752.4
Indicator value	0	0.9	0.9	0.9	0.8	0	0.9	0.9

Licensee Comments: none

Safety System Unavailability, Emergency AC Power, >2EDG



Thresholds: White > 2.5% Yellow > 10.0% Red > 20.0%

Notes

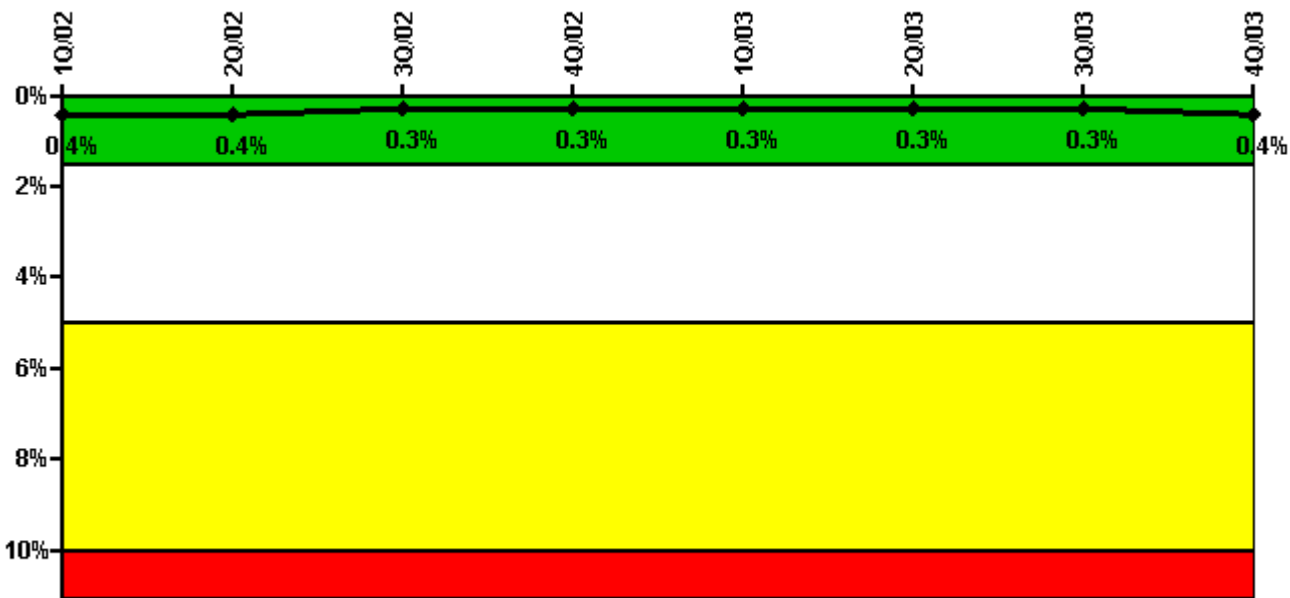
Safety System Unavailability, Emergency AC Power, >2EDG	1Q/02	2Q/02	3Q/02	4Q/02	1Q/03	2Q/03	3Q/03	4Q/03
Train 1								
Planned unavailable hours	2.14	4.55	1.05	7.75	37.72	27.43	7.38	0.99
Unplanned unavailable hours	0	0	0	0	0	0	0	0
Fault exposure hours	0	0	0	0	0	0	0	0
Effective Reset hours	0	0	0	0	0	0	0	0
Required hours	1938.06	2183.00	2208.00	2209.00	2160.00	2183.00	2143.25	1987.25
Train 2								
Planned unavailable hours	1.85	1.37	1.16	0.67	46.23	1.60	5.87	11.20
Unplanned unavailable hours	0	0	0	0	0	0	0	0
Fault exposure hours	0	0	0	0	0	0	0	0
Effective Reset hours	0	0	0	0	0	0	0	0
Required hours	1902.72	2183.00	2208.00	2209.00	2160.00	2183.00	1740.92	2176.87
Train 3								
Planned unavailable hours	2.00	1.39	1.23	1.35	54.45	2.20	1.90	1.11
Unplanned unavailable hours	0	0	0	0	21.93	0	12.10	0.58
Fault exposure hours	0	0	0	0	0	0	0	0
Effective Reset hours	0	0	0	0	0	0	0	0
Required hours	1938.06	2183.00	2208.00	2209.00	2160.00	2183.00	2143.25	1987.25
Train 4								
Planned unavailable hours	6.45	0.62	2.48	1.00	80.63	0.68	0.97	0.65
Unplanned unavailable hours	0	0	0	0	0	0	0	0
Fault exposure hours	0	0	0	0	0	0	0	0
Effective Reset hours	0	0	0	0	0	0	0	0
Required hours	1902.72	2183.00	2208.00	2209.00	2160.00	2183.00	1740.92	2176.87

Indicator value	0.8%	0.8%	0.8%	0.8%	0.9%	0.8%	0.8%	0.6%

Licensee Comments:

4Q/03: Oct 2003 - The differences in the train required hours are due to the "Protected Train" requirements during RFO5. B-train was protected from (0000) 10/1/03 until (0523) 10/7/03. A-train was then protected from (0523) 10/7/03 until (1331) on 10/8/03. B-train was then protected from (1331) on 10/8/03 until (1353) 10/11/03. From Mid-loop until Mode 4 entry, both trains were protected. All required after Mode 4. November 2003 - 35 minutes of unplanned unavailability was incurred on the 2A-A Diesel Generator due to an inadvertent actuation of the over-speed trip on 11/4/03. This actuation resulted in an auto-start lock out. Reference PER 03-019251-000.

Safety System Unavailability, High Pressure Injection System (HPSI)



Thresholds: White > 1.5% Yellow > 5.0% Red > 10.0%

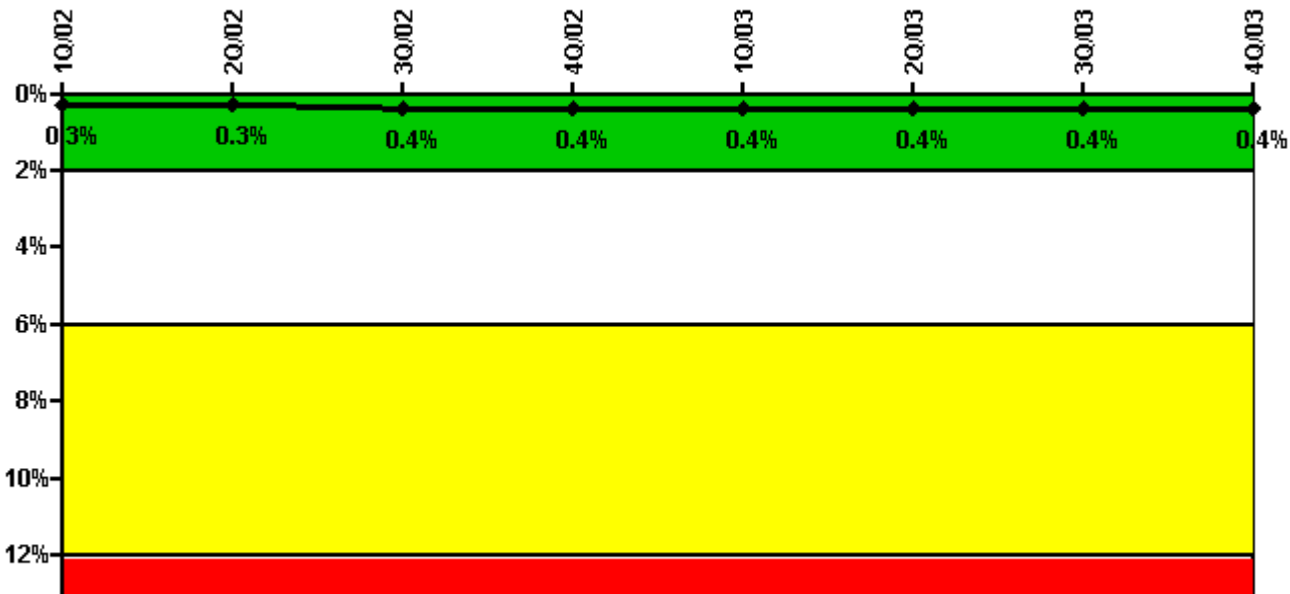
Notes

Safety System Unavailability, High Pressure Injection System (HPSI)	1Q/02	2Q/02	3Q/02	4Q/02	1Q/03	2Q/03	3Q/03	4Q/03
Train 1								
Planned unavailable hours	7.30	8.60	2.10	14.70	5.50	2.70	12.90	42.20
Unplanned unavailable hours	0	0	0	0	0	0	0	0
Fault exposure hours	0	0	0	0	0	0	0	0
Effective Reset hours	0	0	0	0	0	0	0	0
Required hours	1678.00	2099.70	2208.00	2209.00	2160.00	2183.00	1674.40	1806.20

Train 2								
Planned unavailable hours	2.00	0.10	3.10	3.70	1.90	34.00	2.00	2.10
Unplanned unavailable hours	0	0	0	0	0	0	0	0
Fault exposure hours	0	0	0	0	0	0	0	0
Effective Reset hours	0	0	0	0	0	0	0	0
Required hours	1665.50	2087.30	2208.00	2209.00	2160.00	2183.00	1666.30	1825.20
Train 3								
Planned unavailable hours	5.40	12.50	2.20	4.00	22.80	3.60	2.20	7.90
Unplanned unavailable hours	0	0	0	0	0	0	0	0
Fault exposure hours	0	0	0	0	0	0	0	0
Effective Reset hours	0	0	0	0	0	0	0	0
Required hours	1662.70	2087.30	2208.00	2209.00	2160.00	2183.00	1666.30	1806.20
Train 4								
Planned unavailable hours	3.40	0.80	5.00	3.90	23.60	19.10	17.50	7.10
Unplanned unavailable hours	0	0	0	0	0	0	0	0
Fault exposure hours	0	0	0	0	0	0	0	0
Effective Reset hours	0	0	0	0	0	0	0	0
Required hours	1662.70	2087.30	2208.00	2209.00	2160.00	2183.00	1666.30	1806.20
Indicator value	0.4%	0.4%	0.3%	0.3%	0.3%	0.3%	0.3%	0.4%

Licensee Comments: none

Safety System Unavailability, Heat Removal System (AFW)



Thresholds: White > 2.0% Yellow > 6.0% Red > 12.0%

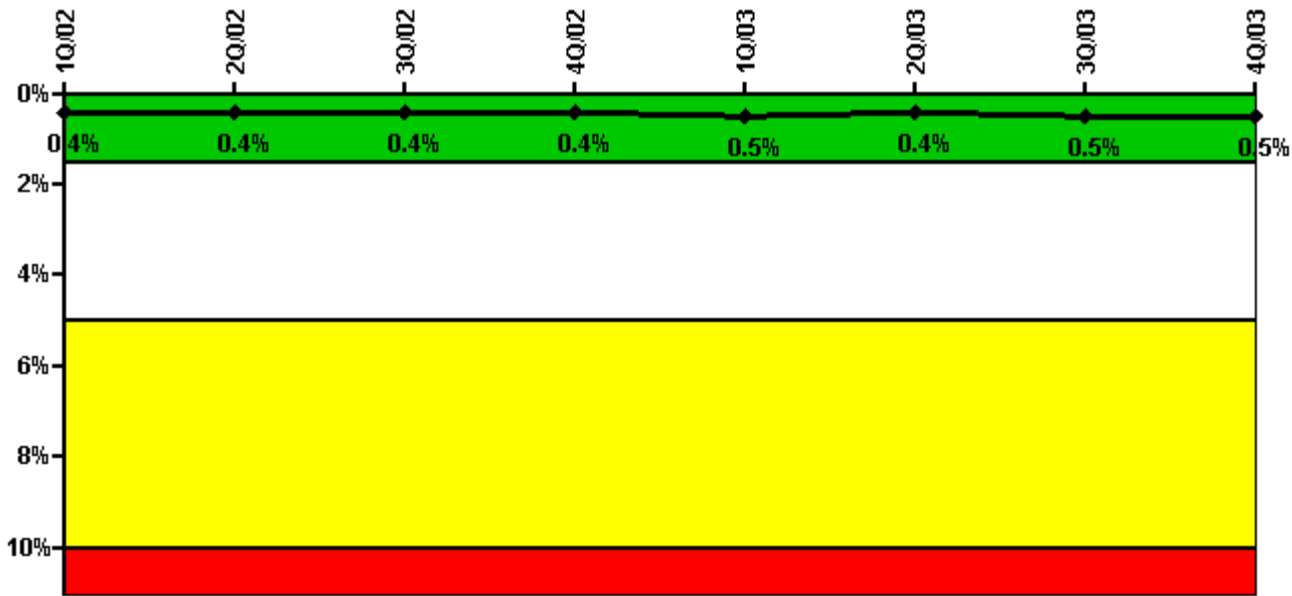
Notes

Safety System Unavailability, Heat Removal System (AFW)	1Q/02	2Q/02	3Q/02	4Q/02	1Q/03	2Q/03	3Q/03	4Q/03
Train 1								
Planned unavailable hours	3.38	8.97	1.90	3.18	12.55	31.59	2.08	3.45
Unplanned unavailable hours	0	0	0	0	0	0	0	0
Fault exposure hours	0	0	0	0	0	0	0	0
Effective Reset hours	0	0	0	0	0	0	0	0
Required hours	1680.80	2099.70	2208.00	2209.00	2160.00	2183.00	1674.40	1825.20
Train 2								
Planned unavailable hours	2.38	0	11.20	3.44	8.18	5.76	2.55	9.65
Unplanned unavailable hours	0	0	0	0	0	0	0	0
Fault exposure hours	0	0	0	0	0	0	0	0
Effective Reset hours	0	0	0	0	0	0	0	0
Required hours	1680.80	2099.70	2208.00	2209.00	2160.00	2183.00	1674.40	1825.20
Train 3								
Planned unavailable hours	4.07	0.03	11.80	0.65	13.82	28.17	0.83	11.32
Unplanned unavailable hours	0	0	0	0	0	0	0	13.58
Fault exposure hours	0	0	0	0	0	0	0	15.17
Effective Reset hours	0	0	0	0	0	0	0	0
Required hours	1662.60	2087.30	2208.00	2209.00	2160.00	2183.00	1666.30	1806.20
Indicator value	0.3%	0.3%	0.4%	0.4%	0.4%	0.4%	0.4%	0.4%

Licensee Comments:

4Q/03: Train 3 - T/2 fault exposure due to excessive water found in oil sample from the Turbine Driven pump outboard bearing. Time of discovery - 12/19/03 (1130). Time of last known acceptable sample was 10/18/03 (2220). T/2 = 739.1 hrs.

Safety System Unavailability, Residual Heat Removal System



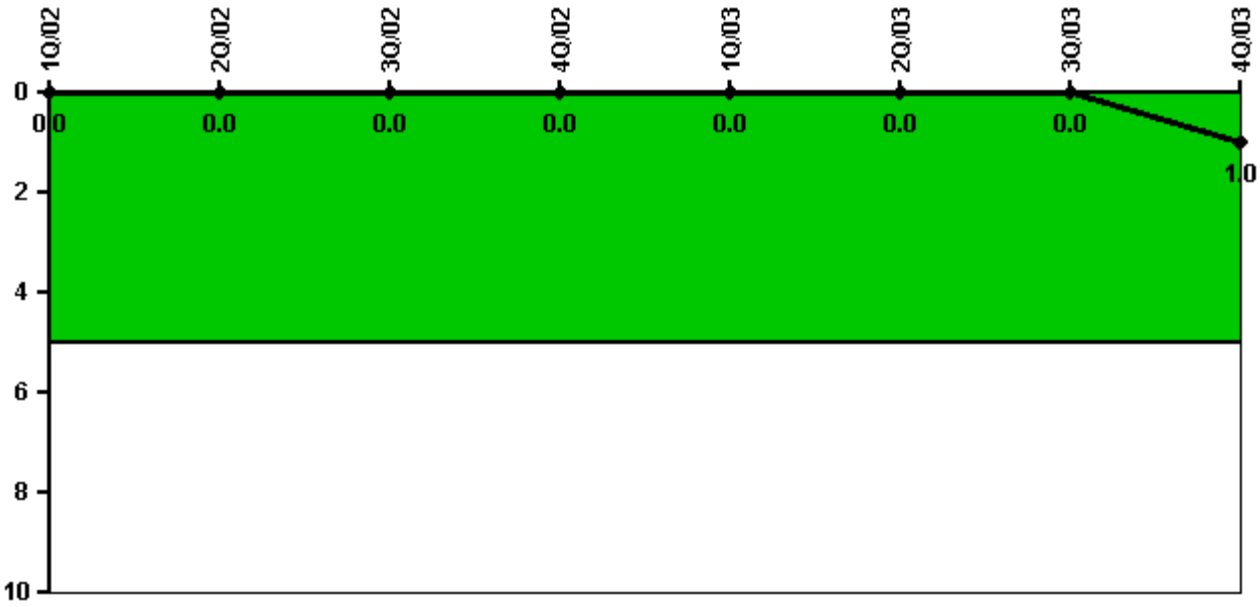
Thresholds: White > 1.5% Yellow > 5.0% Red > 10.0%

Notes

Safety System Unavailability, Residual Heat Removal System	1Q/02	2Q/02	3Q/02	4Q/02	1Q/03	2Q/03	3Q/03	4Q/03
Train 1								
Planned unavailable hours	5.24	10.49	3.43	5.67	50.35	7.32	14.48	4.90
Unplanned unavailable hours	0.03	0	0	0	0	0	0	0
Fault exposure hours	0	0	0	0	0	0	0	0
Effective Reset hours	0	0	0	0	0	0	0	0
Required hours	2091.40	2183.00	2208.00	2209.00	2160.00	2183.00	1926.30	2208.00
Train 2								
Planned unavailable hours	5.37	9.95	8.32	5.90	4.14	21.00	5.97	4.60
Unplanned unavailable hours	0.03	0	0	0	0	0	0.22	0
Fault exposure hours	0	0	0	0	0	0	0	0
Effective Reset hours	0	0	0	0	0	0	0	0
Required hours	2091.40	2183.00	2208.00	2209.00	2160.00	2183.00	1926.30	2208.00
Indicator value	0.4%	0.4%	0.4%	0.4%	0.5%	0.4%	0.5%	0.5%

Licensee Comments: none

Safety System Functional Failures (PWR)



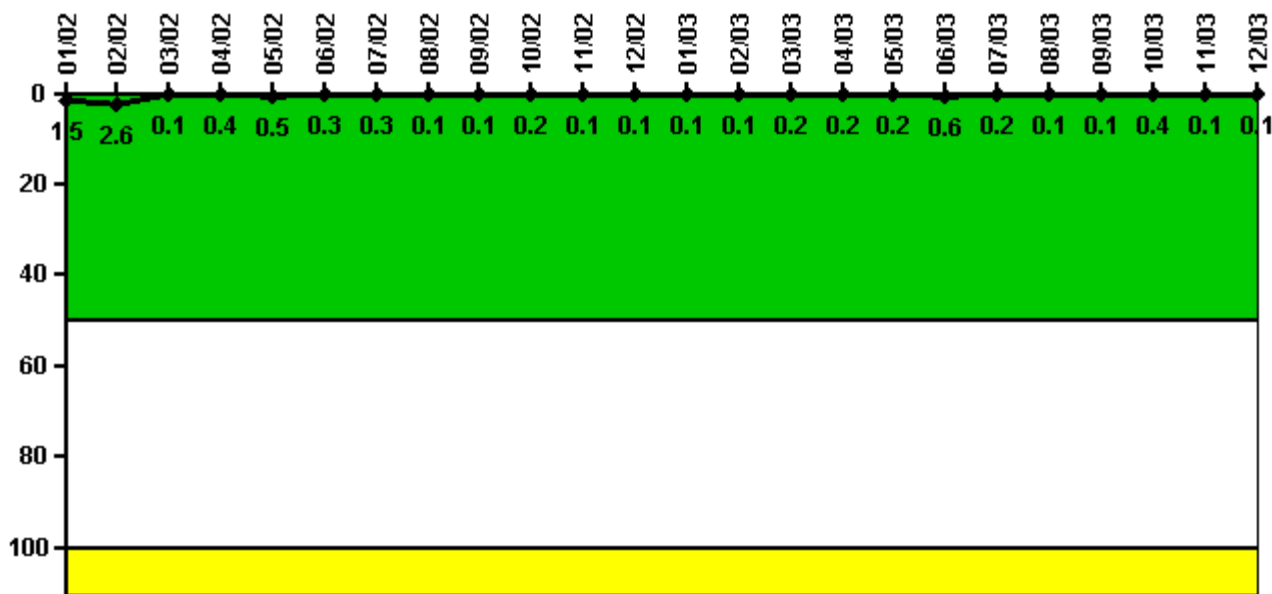
Thresholds: White > 5.0

Notes

Safety System Functional Failures (PWR)	1Q/02	2Q/02	3Q/02	4Q/02	1Q/03	2Q/03	3Q/03	4Q/03
Safety System Functional Failures	0	0	0	0	0	0	0	1
Indicator value	0	0	0	0	0	0	0	1

Licensee Comments: none

Reactor Coolant System Leakage



Thresholds: White > 50.0 Yellow > 100.0

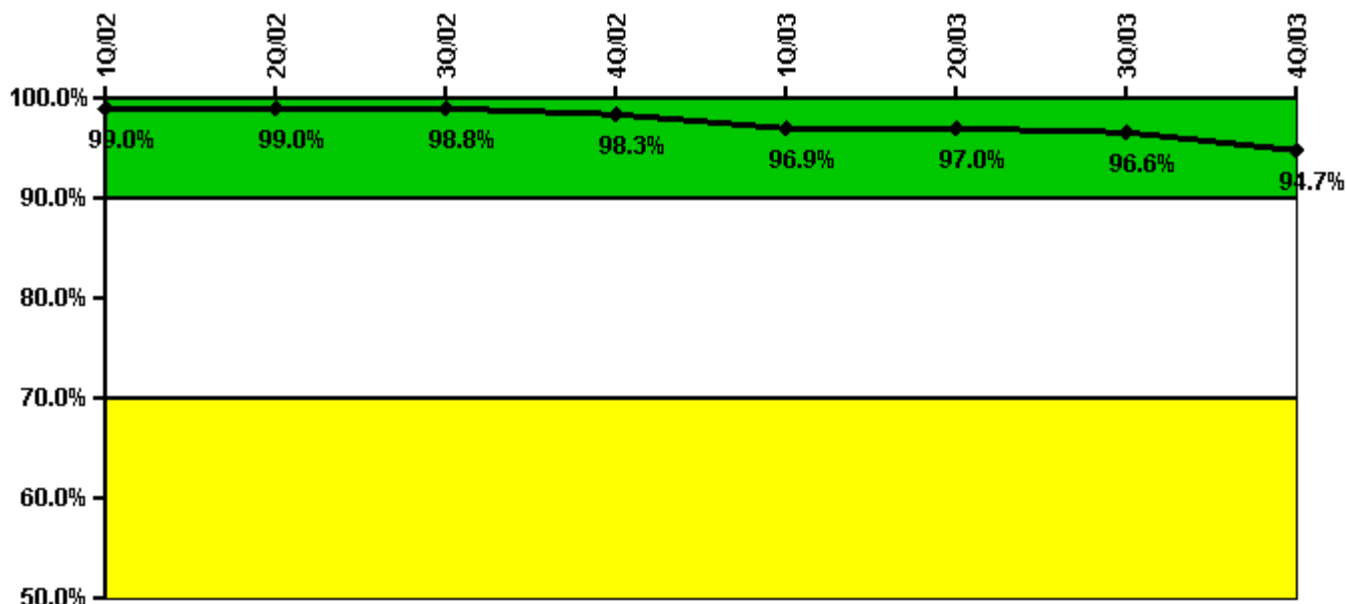
Notes

Reactor Coolant System Leakage	1/02	2/02	3/02	4/02	5/02	6/02	7/02	8/02	9/02	10/02	11/02	12/02
Maximum leakage	0.150	0.260	0.010	0.040	0.050	0.030	0.030	0.010	0.010	0.020	0.010	0.010
Technical specification limit	10.0	10.0	10.0	10.0	10.0	10.0	10.0	10.0	10.0	10.0	10.0	10.0
Indicator value	1.5	2.6	0.1	0.4	0.5	0.3	0.3	0.1	0.1	0.2	0.1	0.1

Reactor Coolant System Leakage	1/03	2/03	3/03	4/03	5/03	6/03	7/03	8/03	9/03	10/03	11/03	12/03
Maximum leakage	0.010	0.010	0.020	0.020	0.020	0.060	0.020	0.010	0.010	0.040	0.010	0.010
Technical specification limit	10.0	10.0	10.0	10.0	10.0	10.0	10.0	10.0	10.0	10.0	10.0	10.0
Indicator value	0.1	0.1	0.2	0.2	0.2	0.6	0.2	0.1	0.1	0.4	0.1	0.1

Licensee Comments: none

Drill/Exercise Performance



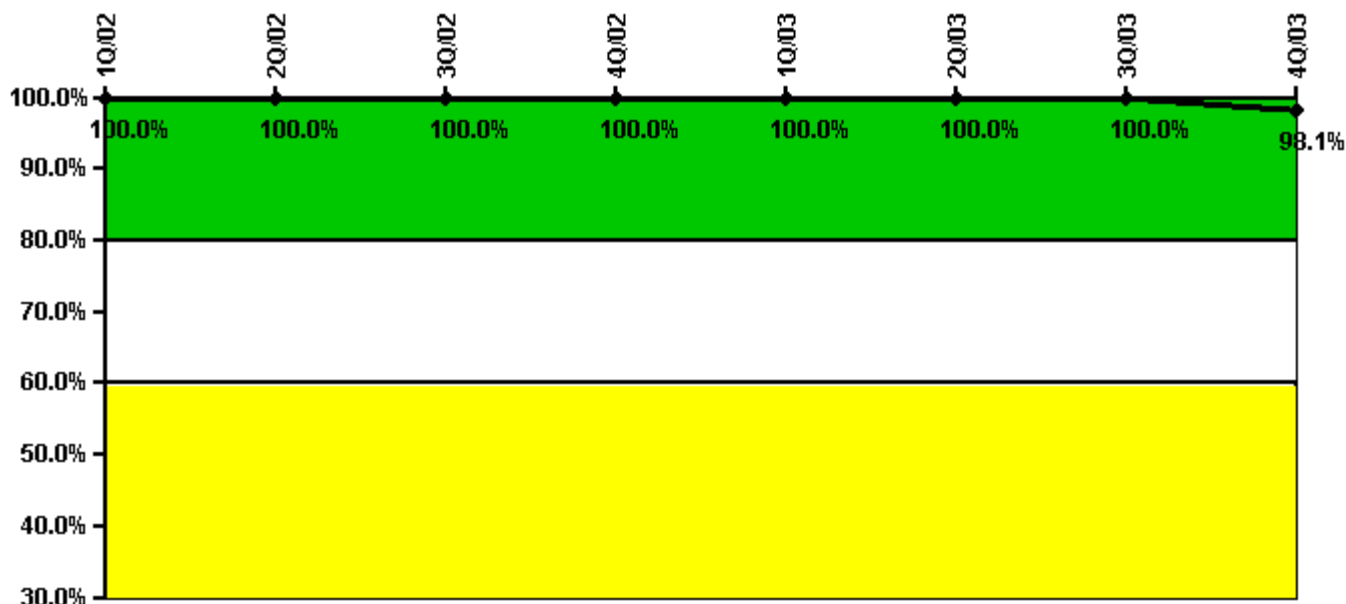
Thresholds: White < 90.0% Yellow < 70.0%

Notes

Drill/Exercise Performance	1Q/02	2Q/02	3Q/02	4Q/02	1Q/03	2Q/03	3Q/03	4Q/03
Successful opportunities	0	6.0	8.0	45.0	8.0	6.0	47.0	23.0
Total opportunities	0	6.0	8.0	46.0	10.0	6.0	49.0	26.0
Indicator value	99.0%	99.0%	98.8%	98.3%	96.9%	97.0%	96.6%	94.7%

Licensee Comments: none

ERO Drill Participation



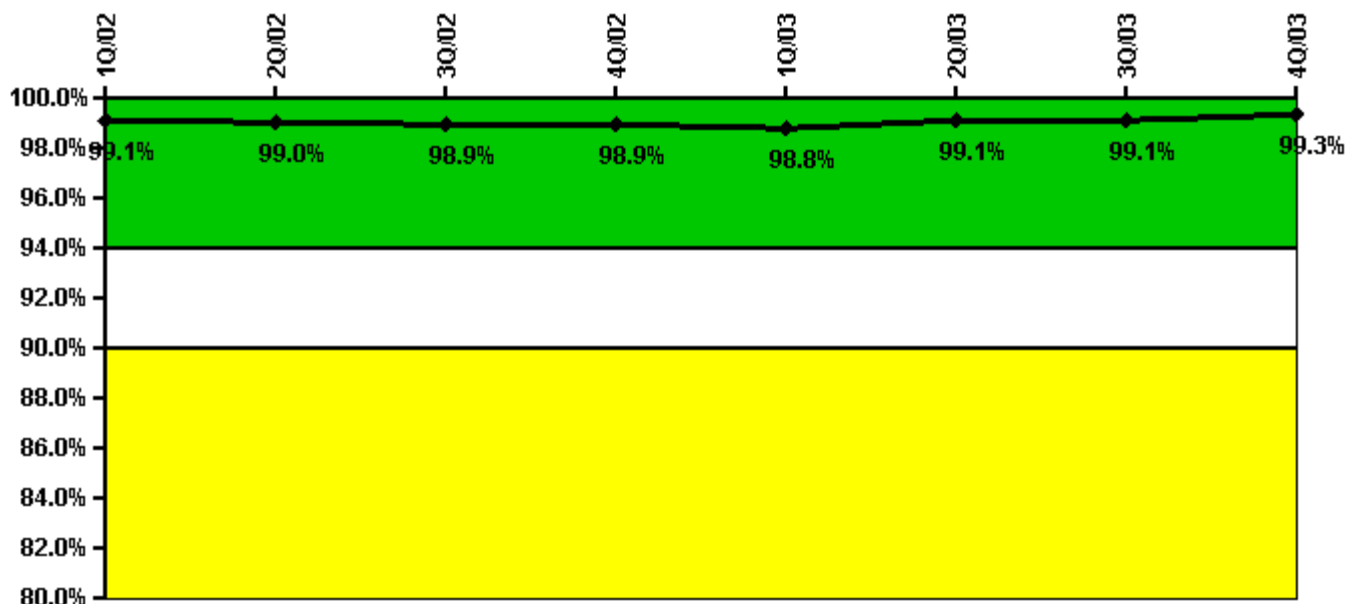
Thresholds: White < 80.0% Yellow < 60.0%

Notes

ERO Drill Participation	1Q/02	2Q/02	3Q/02	4Q/02	1Q/03	2Q/03	3Q/03	4Q/03
Participating Key personnel	50.0	54.0	54.0	56.0	56.0	57.0	55.0	52.0
Total Key personnel	50.0	54.0	54.0	56.0	56.0	57.0	55.0	53.0
Indicator value	100.0%	100.0%	100.0%	100.0%	100.0%	100.0%	100.0%	98.1%

Licensee Comments: none

Alert & Notification System



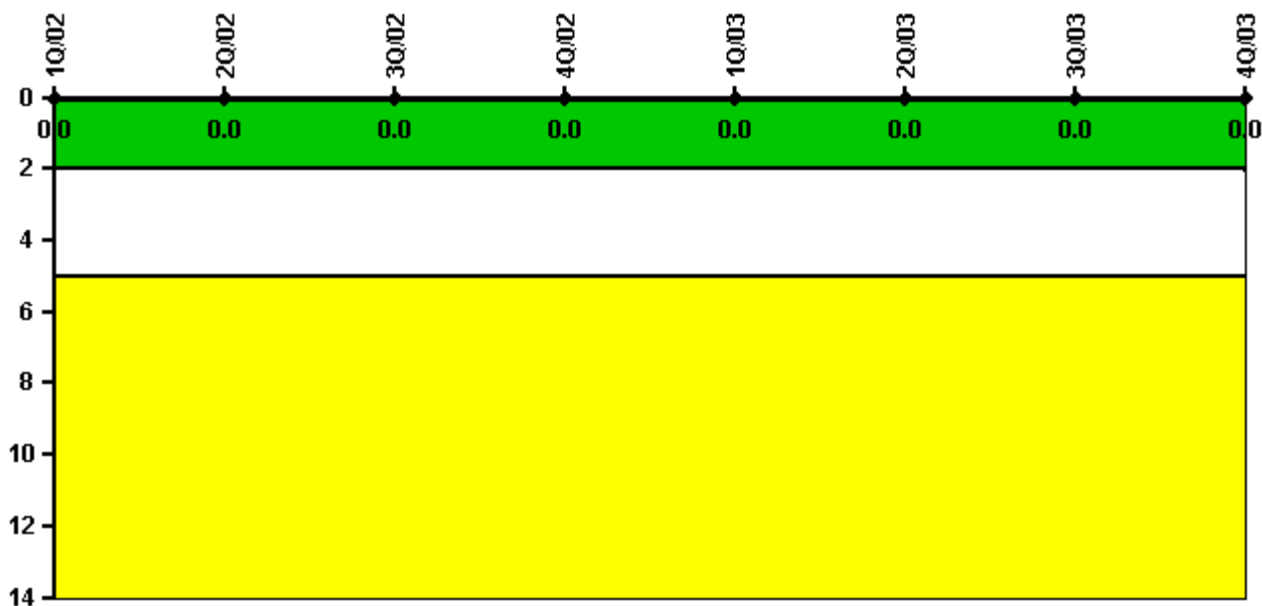
Thresholds: White < 94.0% Yellow < 90.0%

Notes

Alert & Notification System	1Q/02	2Q/02	3Q/02	4Q/02	1Q/03	2Q/03	3Q/03	4Q/03
Successful siren-tests	688	777	785	882	686	885	786	886
Total sirens-tests	693	792	792	891	693	891	792	891
Indicator value	99.1%	99.0%	98.9%	98.9%	98.8%	99.1%	99.1%	99.3%

Licensee Comments: none

Occupational Exposure Control Effectiveness



Thresholds: White > 2.0 Yellow > 5.0

Notes

Occupational Exposure Control Effectiveness	1Q/02	2Q/02	3Q/02	4Q/02	1Q/03	2Q/03	3Q/03	4Q/03
High radiation area occurrences	0	0	0	0	0	0	0	0
Very high radiation area occurrences	0	0	0	0	0	0	0	0
Unintended exposure occurrences	0	0	0	0	0	0	0	0
Indicator value	0	0	0	0	0	0	0	0

Licensee Comments: none

RETS/ODCM Radiological Effluent



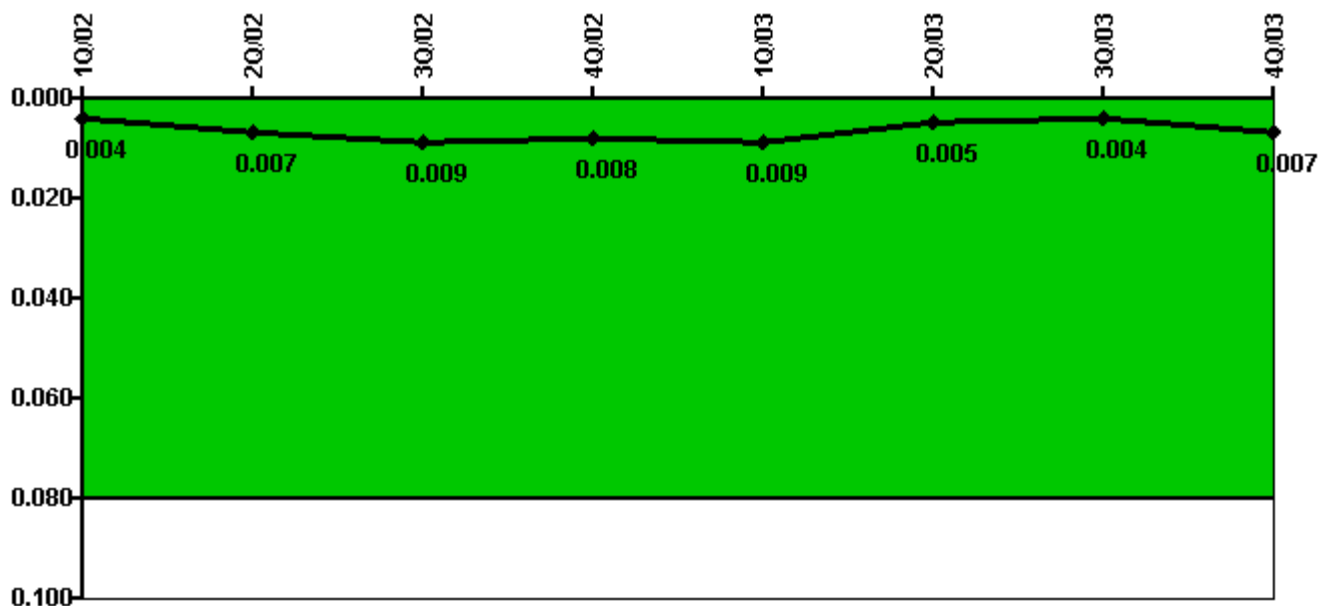
Thresholds: White > 1.0 Yellow > 3.0

Notes

RETS/ODCM Radiological Effluent	1Q/02	2Q/02	3Q/02	4Q/02	1Q/03	2Q/03	3Q/03	4Q/03
RETS/ODCM occurrences	0	0	0	0	0	0	0	0
Indicator value	0	0	0	0	0	0	0	0

Licensee Comments: none

Protected Area Security Performance Index



Thresholds: White > 0.080

Notes

Protected Area Security Performance Index	1Q/02	2Q/02	3Q/02	4Q/02	1Q/03	2Q/03	3Q/03	4Q/03
IDS compensatory hours	11.10	46.70	62.30	14.10	40.10	76.60	3.30	101.40
CCTV compensatory hours	23.8	151.7	6.4	0.4	15.2	0	21.6	14.0
IDS normalization factor	2.40	2.40	2.40	2.40	2.40	2.40	2.40	2.40
CCTV normalization factor	2.1	2.1	2.1	2.1	2.1	2.1	2.1	2.1
Index Value	0.004	0.007	0.009	0.008	0.009	0.005	0.004	0.007

Licensee Comments: none

Personnel Screening Program



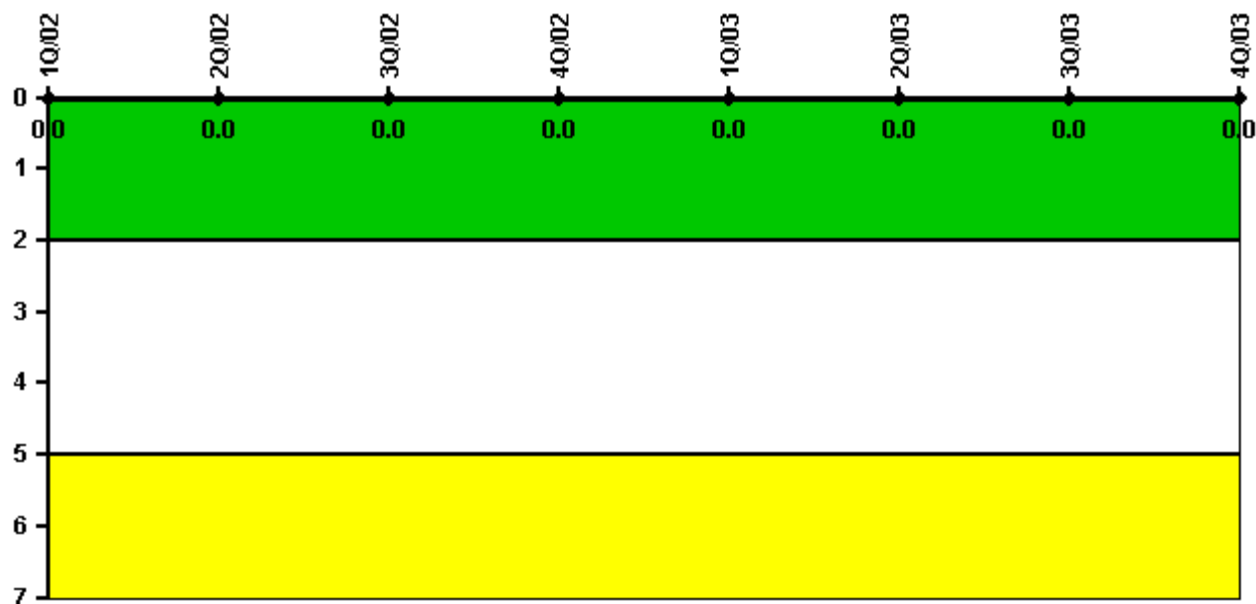
Thresholds: White > 2.0 Yellow > 5.0

Notes

Personnel Screening Program	1Q/02	2Q/02	3Q/02	4Q/02	1Q/03	2Q/03	3Q/03	4Q/03
Program failures	0	0	0	0	0	0	0	0
Indicator value	0	0	0	0	0	0	0	0

Licensee Comments: none

FFD/Personnel Reliability



Thresholds: White > 2.0 Yellow > 5.0

Notes

FFD/Personnel Reliability	1Q/02	2Q/02	3Q/02	4Q/02	1Q/03	2Q/03	3Q/03	4Q/03
Program Failures	0	0	0	0	0	0	0	0
Indicator value	0	0	0	0	0	0	0	0

Licensee Comments: none

▲ [PI Summary](#) | [Inspection Findings Summary](#) | [Reactor Oversight Process](#)

Last Modified: January 23, 2004