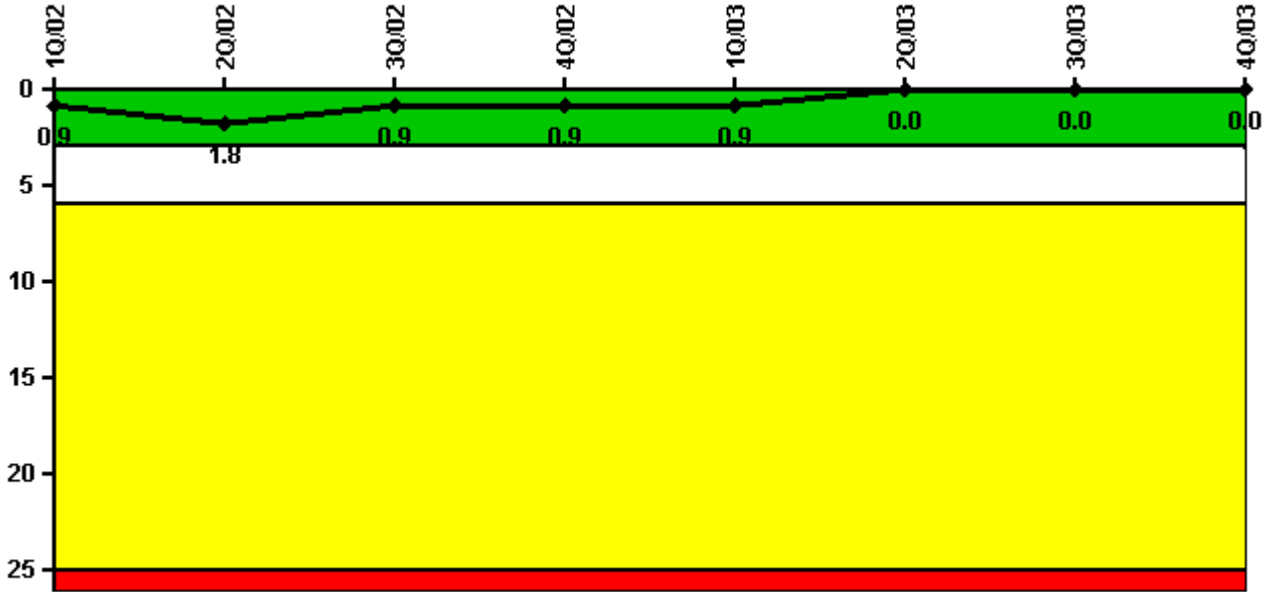


# Vogtle 1

## 4Q/2003 Performance Indicators

Licensee's General Comments: none

### Unplanned Scrams per 7000 Critical Hrs



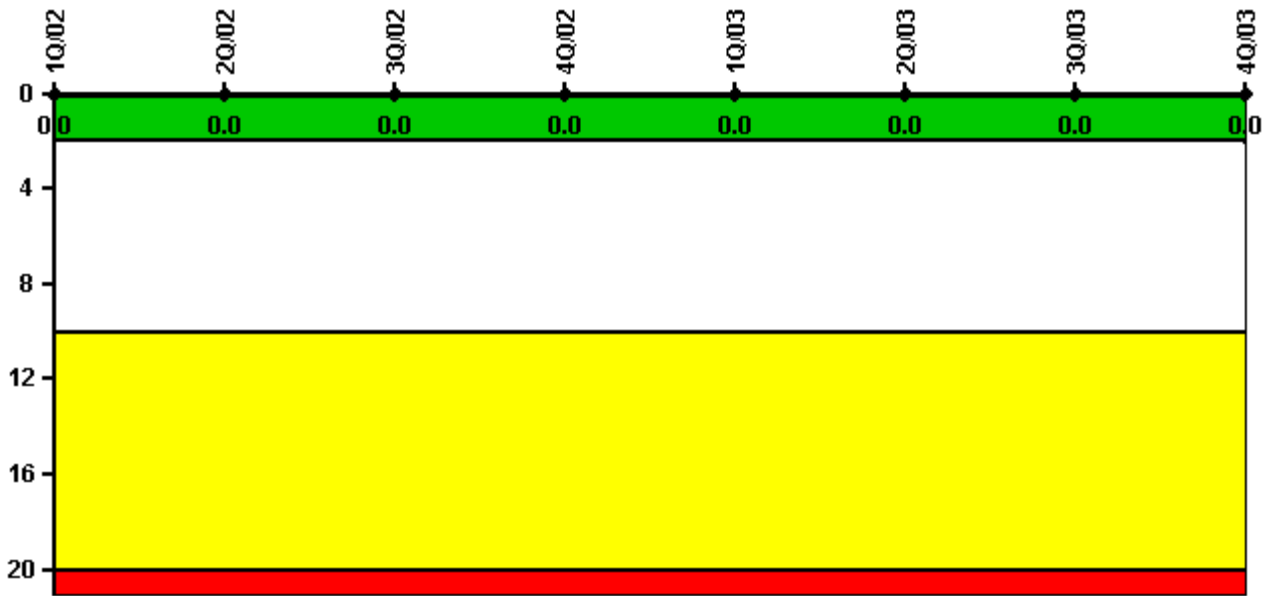
Thresholds: White > 3.0 Yellow > 6.0 Red > 25.0

### Notes

Unplanned Scrams per 7000 Critical Hrs	1Q/02	2Q/02	3Q/02	4Q/02	1Q/03	2Q/03	3Q/03	4Q/03
Unplanned scrams	0	1.0	0	0	0	0	0	0
Critical hours	1537.5	1757.5	2208.0	2060.1	2160.0	2144.4	2138.8	2209.0
Indicator value	0.9	1.8	0.9	0.9	0.9	0	0	0

Licensee Comments: none

### Scrams with Loss of Normal Heat Removal



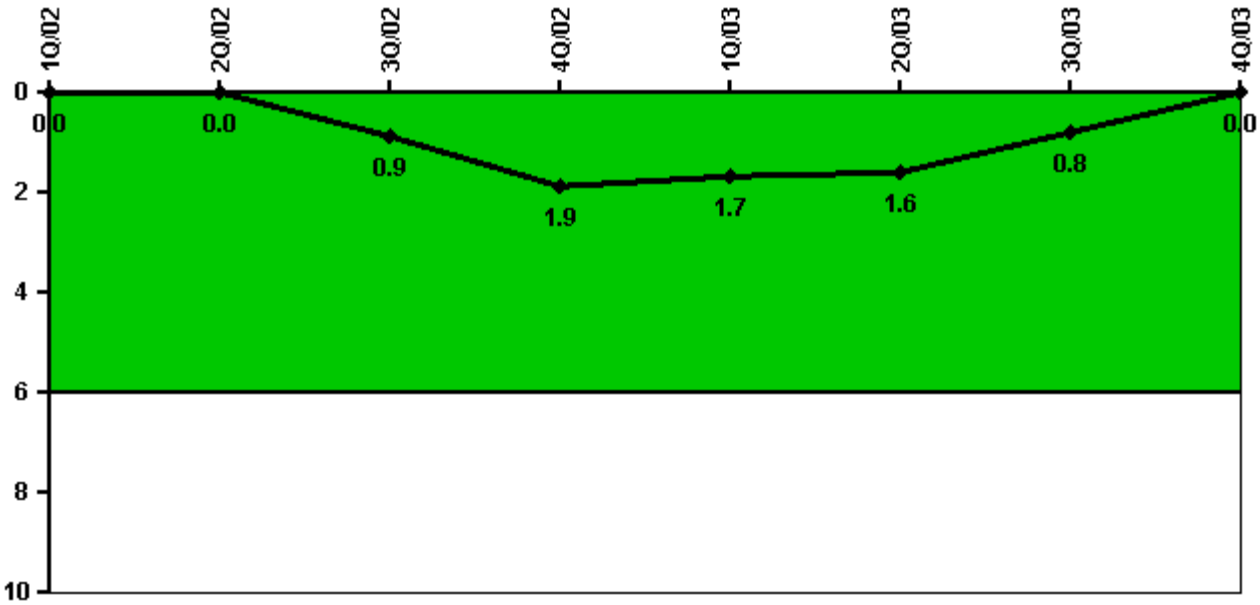
Thresholds: White > 2.0 Yellow > 10.0 Red > 20.0

#### Notes

Scrams with Loss of Normal Heat Removal	1Q/02	2Q/02	3Q/02	4Q/02	1Q/03	2Q/03	3Q/03	4Q/03
Scrams	0	0	0	0	0	0	0	0
Indicator value	0	0	0	0	0	0	0	0

Licensee Comments: none

### Unplanned Power Changes per 7000 Critical Hrs



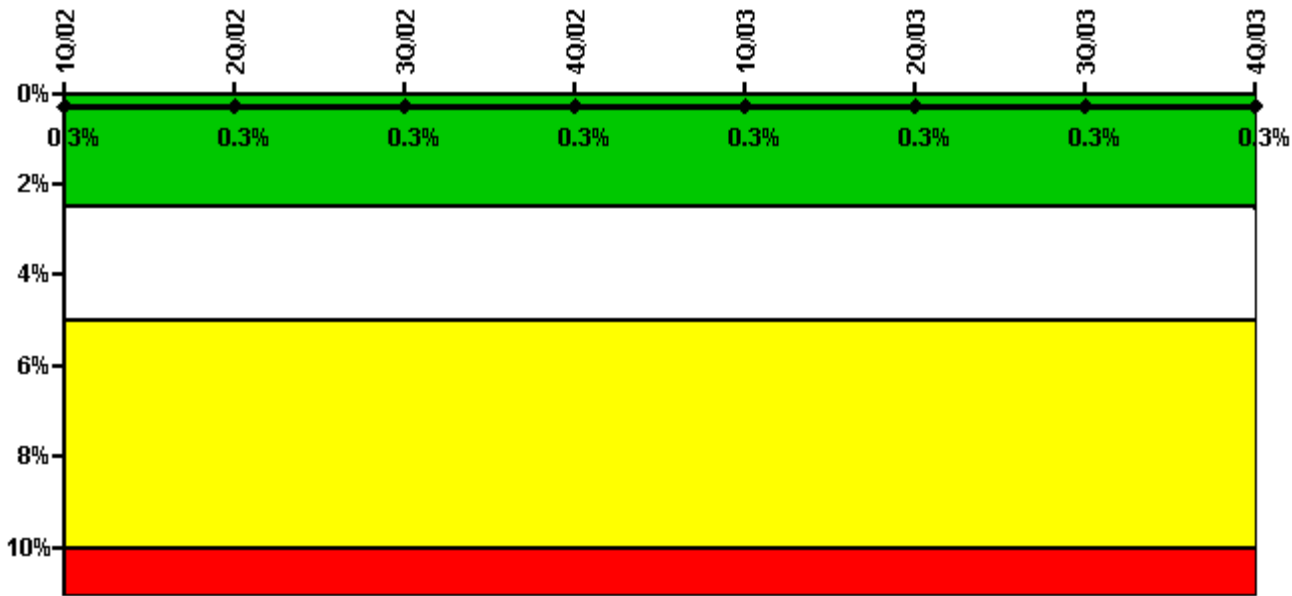
Thresholds: White > 6.0

#### Notes

Unplanned Power Changes per 7000 Critical Hrs	1Q/02	2Q/02	3Q/02	4Q/02	1Q/03	2Q/03	3Q/03	4Q/03
Unplanned power changes	0	0	1.0	1.0	0	0	0	0
Critical hours	1537.5	1757.5	2208.0	2060.1	2160.0	2144.4	2138.8	2209.0
Indicator value	0	0	0.9	1.9	1.7	1.6	0.8	0

Licensee Comments: none

### Safety System Unavailability, Emergency AC Power



Thresholds: White > 2.5% Yellow > 5.0% Red > 10.0%

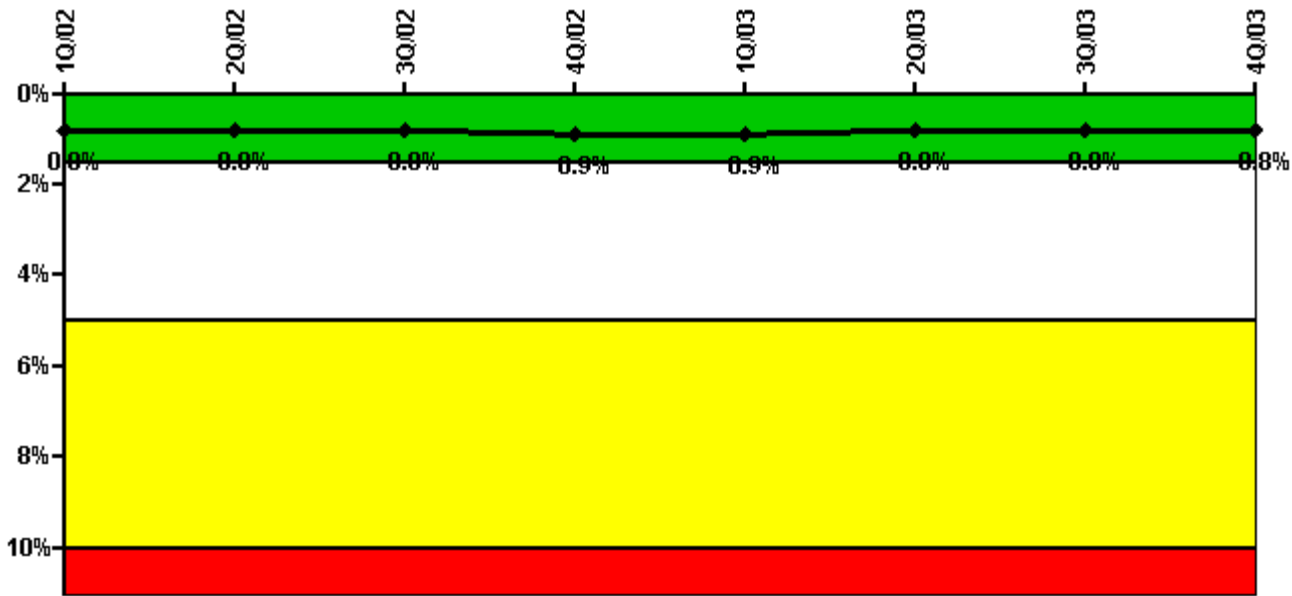
**Notes**

Safety System Unavailability, Emergency AC Power	1Q/02	2Q/02	3Q/02	4Q/02	1Q/03	2Q/03	3Q/03	4Q/03
<b>Train 1</b>								
Planned unavailable hours	1.88	1.83	1.83	2.04	1.97	2.68	11.08	1.99
Unplanned unavailable hours	10.75	0.32	0	0	0	0	0	0
Fault exposure hours	0	0	0	0	0	0	0	0
Effective Reset hours	0	0	0	0	0	0	0	0
Required hours	2160.00	2183.00	2208.00	2209.00	2160.00	2183.00	2208.00	2209.00
<b>Train 2</b>								
Planned unavailable hours	2.15	5.98	2.29	1.82	1.81	2.38	1.72	1.63
Unplanned unavailable hours	0	0	0	0	0	0	0	0
Fault exposure hours	0	0	0	0	0	0	0	0
Effective Reset hours	0	0	0	0	0	0	0	0
Required hours	2160.00	2183.00	2208.00	2209.00	2160.00	2183.00	2208.00	2209.00
Indicator value	0.3%	0.3%	0.3%	0.3%	0.3%	0.3%	0.3%	0.3%

Licensee Comments:

4Q/03: Required Hours added for Nov 2003.

### Safety System Unavailability, High Pressure Injection System (HPSI)



Thresholds: White > 1.5% Yellow > 5.0% Red > 10.0%

**Notes**

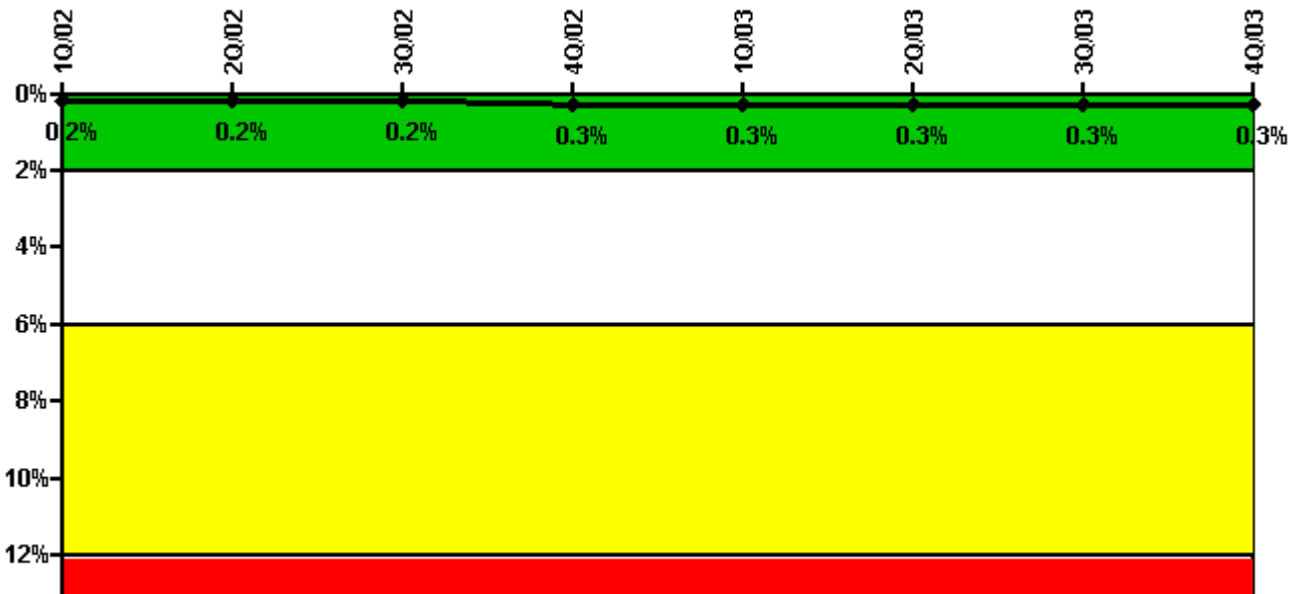
Safety System Unavailability, High Pressure Injection System (HPSI)	1Q/02	2Q/02	3Q/02	4Q/02	1Q/03	2Q/03	3Q/03	4Q/03
<b>Train 1</b>								
Planned unavailable hours	5.69	3.55	9.10	9.53	3.00	7.32	4.06	19.27
Unplanned unavailable hours	0	0	4.69	1.10	15.62	0	0	0
Fault exposure hours	0	0	0	0	0	0	0	0
Effective Reset hours	0	0	0	0	0	0	0	0
Required hours	1537.52	1757.49	2208.00	2060.12	2160.00	2144.40	2138.80	1715.03
<b>Train 2</b>								
Planned unavailable hours	3.45	6.66	8.89	5.48	20.12	2.62	8.33	5.84
Unplanned unavailable hours	0	0	0	0	0	0	0	0
Fault exposure hours	0	0	0	0	0	0	0	0
Effective Reset hours	0	0	0	0	0	0	0	0
Required hours	1537.52	1757.49	2208.00	2060.12	2160.00	2144.40	2138.80	1715.03
<b>Train 3</b>								
Planned unavailable hours	9.38	7.86	10.59	11.24	4.58	26.62	5.55	20.19
Unplanned unavailable hours	0	0	4.69	1.10	15.62	0	0	0
Fault exposure hours	0	0	0	0	0	0	0	0
Effective Reset hours	0	0	0	0	0	0	0	0
Required hours	1537.52	1757.49	2208.00	2060.12	2160.00	2144.40	2138.80	1715.03
<b>Train 4</b>								
Planned unavailable hours	5.01	9.59	13.01	6.95	23.19	21.57	10.85	9.28
Unplanned unavailable hours	0	0	0	0	0	0	0	0
Fault exposure hours	0	0	0	0	0	0	0	0
Effective Reset hours	0	0	0	0	0	0	0	0

Required hours	1537.52	1757.49	2208.00	2060.12	2160.00	2144.40	2138.80	1715.03
Indicator value	0.8%	0.8%	0.8%	0.9%	0.9%	0.8%	0.8%	0.8%

Licensee Comments:

4Q/03: Required Hours added for Nov 2003.

### Safety System Unavailability, Heat Removal System (AFW)



Thresholds: White > 2.0% Yellow > 6.0% Red > 12.0%

### Notes

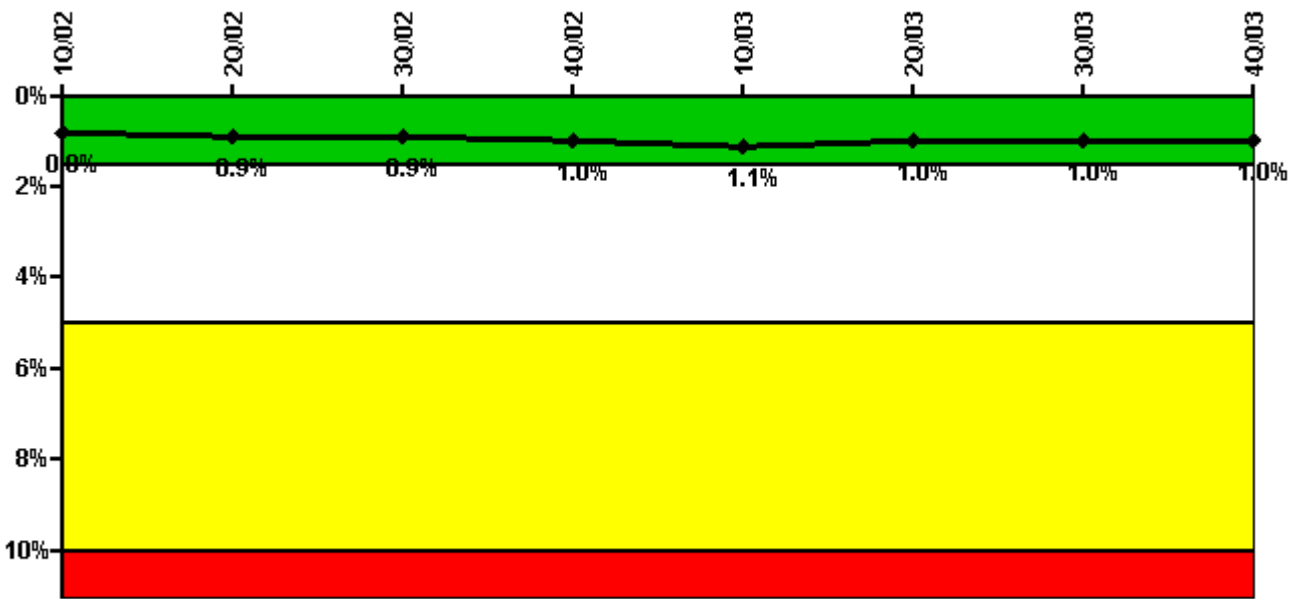
Safety System Unavailability, Heat Removal System (AFW)	1Q/02	2Q/02	3Q/02	4Q/02	1Q/03	2Q/03	3Q/03	4Q/03
<b>Train 1</b>								
Planned unavailable hours	5.57	12.87	10.50	4.84	2.47	5.43	2.82	2.72
Unplanned unavailable hours	0	0	0	0	0	0	0	13.45
Fault exposure hours	0	0	0	0	0	0	0	0
Effective Reset hours	0	0	0	0	0	0	0	0
Required hours	1537.52	1757.49	2208.00	2060.12	2160.00	2144.40	2138.80	1715.03
<b>Train 2</b>								
Planned unavailable hours	4.23	6.00	9.99	2.94	5.07	2.00	5.10	28.32
Unplanned unavailable hours	0	0	0	0	0	0	0	0
Fault exposure hours	0	0	0	0	0	0	0	0
Effective Reset hours	0	0	0	0	0	0	0	0

Required hours	1537.52	1757.49	2208.00	2060.12	2160.00	2144.40	2138.80	1715.03
<b>Train 3</b>								
Planned unavailable hours	1.29	10.32	2.96	2.63	1.48	2.50	0.22	3.00
Unplanned unavailable hours	0	0	0	0	0	0	0	36.35
Fault exposure hours	0	0	0	0	0	0	0	3.55
Effective Reset hours	0	0	0	0	0	0	0	0
Required hours	1537.52	1757.49	2208.00	2060.12	2160.00	2144.40	2138.80	1715.03
<b>Indicator value</b>	<b>0.2%</b>	<b>0.2%</b>	<b>0.2%</b>	<b>0.3%</b>	<b>0.3%</b>	<b>0.3%</b>	<b>0.3%</b>	<b>0.3%</b>

Licensee Comments:

4Q/03: Required Hours added for Nov 2003.

### Safety System Unavailability, Residual Heat Removal System



Thresholds: White > 1.5% Yellow > 5.0% Red > 10.0%

### Notes

Safety System Unavailability, Residual Heat Removal System	1Q/02	2Q/02	3Q/02	4Q/02	1Q/03	2Q/03	3Q/03	4Q/03
<b>Train 1</b>								
Planned unavailable hours	27.24	10.53	12.82	30.07	14.16	12.95	23.88	21.65
Unplanned unavailable hours	0	0	4.69	7.19	15.62	0	0	0
Fault exposure hours	0	18.75	0	0	0	0	0	0
Effective Reset hours	0	0	0	0	0	0	0	0

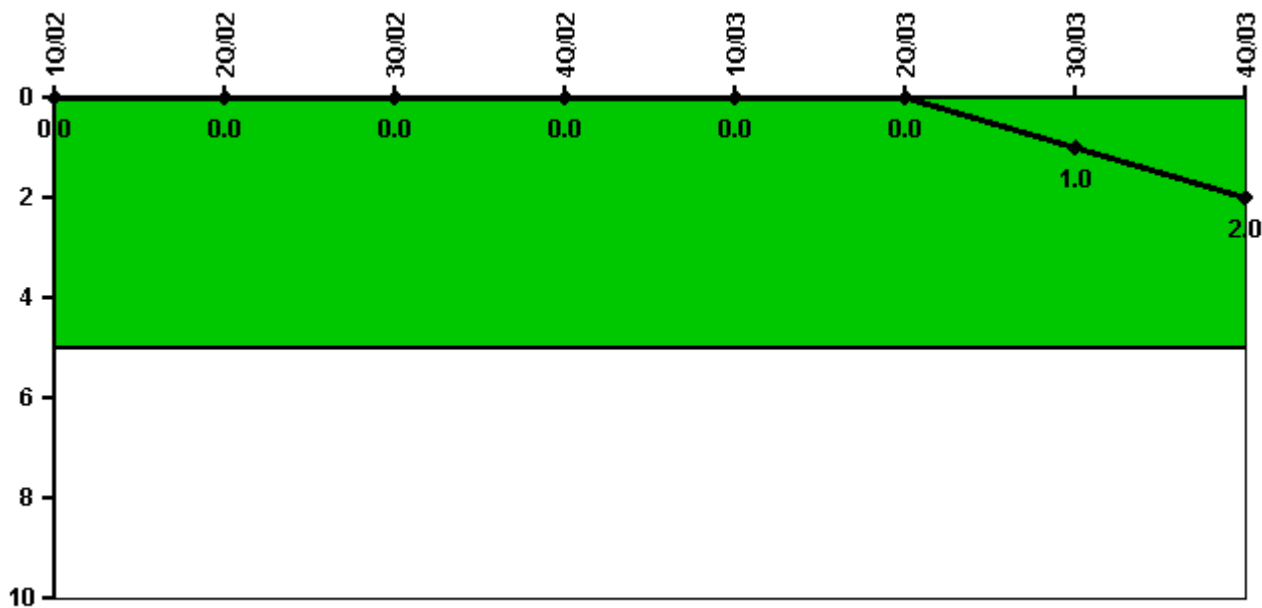
Required hours	2160.00	2183.00	2208.00	2209.00	2160.00	2183.00	2208.00	2209.00
<b>Train 2</b>								
Planned unavailable hours	29.82	8.23	9.46	7.46	23.00	5.97	23.06	8.06
Unplanned unavailable hours	0	0	0	0	0	0	0	0
Fault exposure hours	0	18.75	0	0	0	0	0	0
Effective Reset hours	0	0	0	0	0	0	0	0
Required hours	2160.00	2183.00	2208.00	2209.00	2160.00	2183.00	2208.00	2209.00
<b>Indicator value</b>	<b>0.8%</b>	<b>0.9%</b>	<b>0.9%</b>	<b>1.0%</b>	<b>1.1%</b>	<b>1.0%</b>	<b>1.0%</b>	<b>1.0%</b>

Licensee Comments:

4Q/03: Required Hours added for Nov 2003.

2Q/02: Fault Exposure hours per LER 1-2003-001.

### Safety System Functional Failures (PWR)



Thresholds: White > 5.0

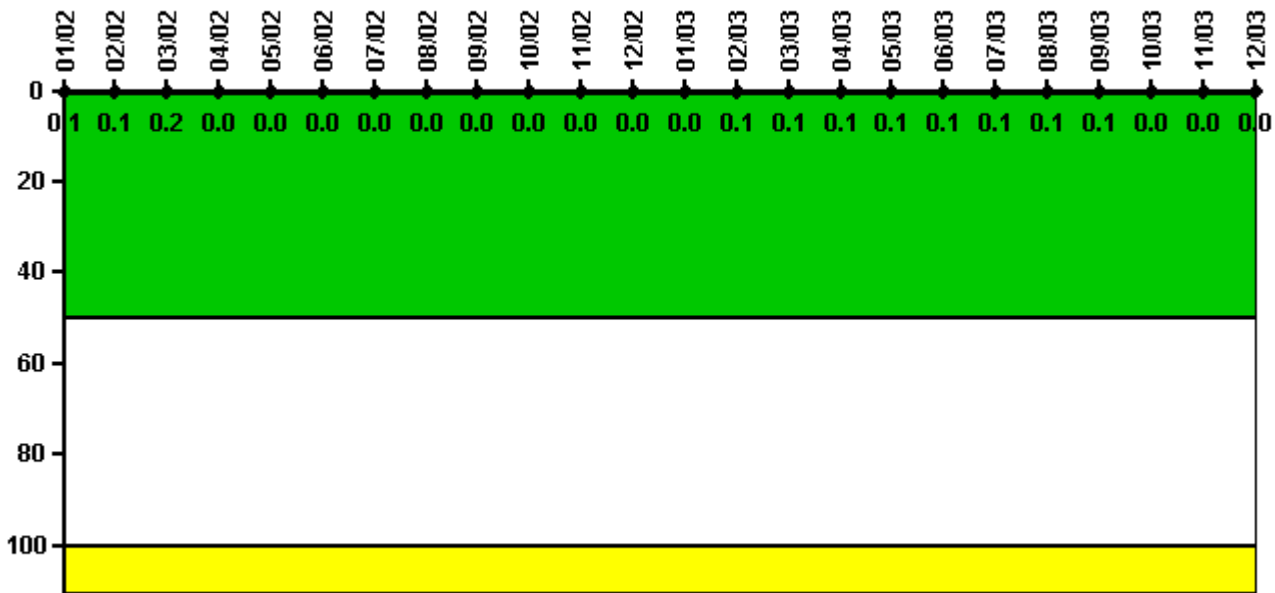
### Notes

Safety System Functional Failures (PWR)	1Q/02	2Q/02	3Q/02	4Q/02	1Q/03	2Q/03	3Q/03	4Q/03
Safety System Functional Failures	0	0	0	0	0	0	1	1
<b>Indicator value</b>	<b>0</b>	<b>0</b>	<b>0</b>	<b>0</b>	<b>0</b>	<b>0</b>	<b>1</b>	<b>2</b>



Licensee Comments: none

### Reactor Coolant System Activity



Thresholds: White > 50.0 Yellow > 100.0

### Notes

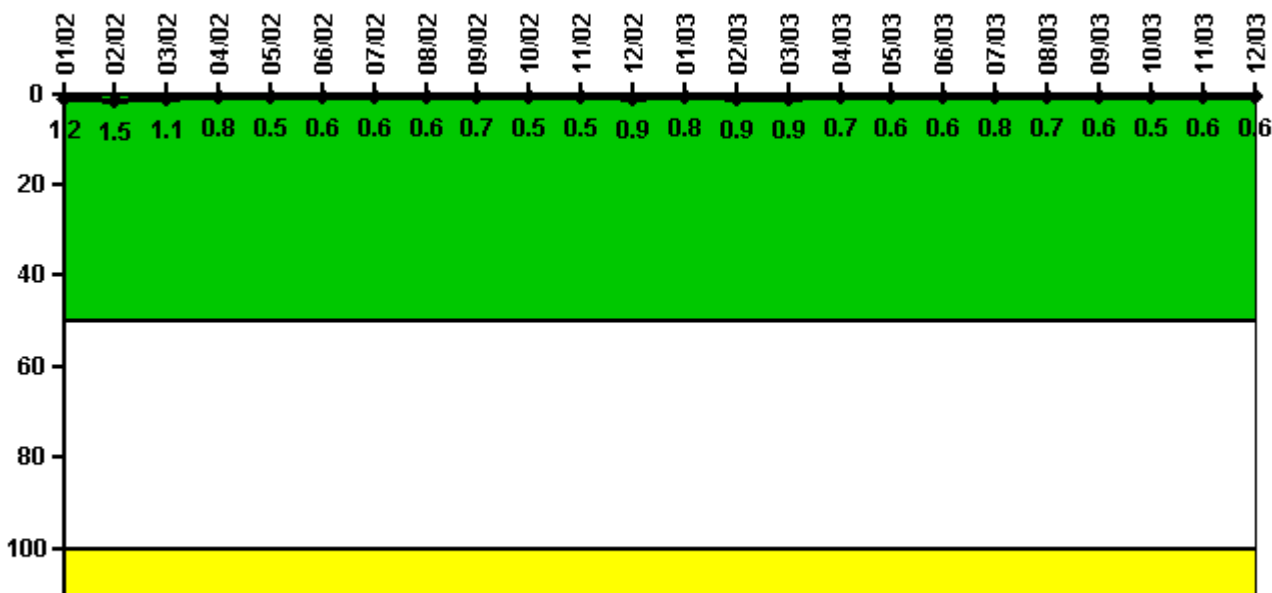
Reactor Coolant System Activity	1/02	2/02	3/02	4/02	5/02	6/02	7/02	8/02	9/02	10/02	11/02	12/02
Maximum activity	0.001060	0.001475	0.001530	0.000314	0.000312	0.000274	0.000319	0.000330	0.000343	0.000411	0.000354	0.000443
Technical specification limit	1.0	1.0	1.0	1.0	1.0	1.0	1.0	1.0	1.0	1.0	1.0	1.0
Indicator value	0.1	0.1	0.2	0	0	0	0	0	0	0	0	0

Reactor Coolant System Activity	1/03	2/03	3/03	4/03	5/03	6/03	7/03	8/03	9/03	10/03	11/03	12/03
Maximum activity	0.000455	0.000560	0.000750	0.000585	0.001290	0.000565	0.000591	0.000605	0.000625	0.000246	0.000402	0.000304
Technical specification limit	1.0	1.0	1.0	1.0	1.0	1.0	1.0	1.0	1.0	1.0	1.0	1.0
Indicator value	0	0.1	0.1	0.1	0.1	0.1	0.1	0.1	0.1	0	0	0

Licensee Comments: none

### Reactor Coolant System Leakage



Thresholds: White > 50.0 Yellow > 100.0

#### Notes

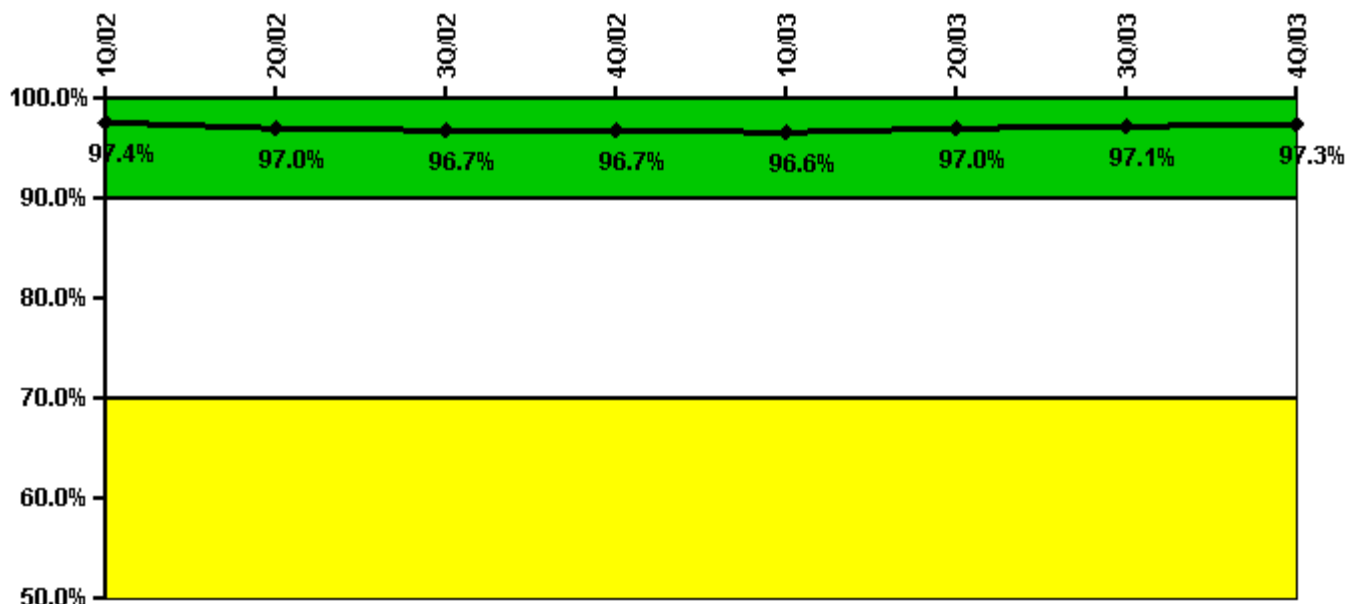
Reactor Coolant System Leakage	1/02	2/02	3/02	4/02	5/02	6/02	7/02	8/02	9/02	10/02	11/02	12/02
Maximum leakage	0.120	0.149	0.107	0.079	0.053	0.060	0.064	0.061	0.065	0.047	0.051	0.093
Technical specification limit	10.0	10.0	10.0	10.0	10.0	10.0	10.0	10.0	10.0	10.0	10.0	10.0
Indicator value	1.2	1.5	1.1	0.8	0.5	0.6	0.6	0.6	0.7	0.5	0.5	0.9

Reactor Coolant System Leakage	1/03	2/03	3/03	4/03	5/03	6/03	7/03	8/03	9/03	10/03	11/03	12/03
Maximum leakage	0.084	0.094	0.094	0.071	0.062	0.060	0.082	0.066	0.062	0.045	0.061	0.055
Technical specification limit	10.0	10.0	10.0	10.0	10.0	10.0	10.0	10.0	10.0	10.0	10.0	10.0
Indicator value	0.8	0.9	0.9	0.7	0.6	0.6	0.8	0.7	0.6	0.5	0.6	0.6

Licensee Comments: none

### Drill/Exercise Performance



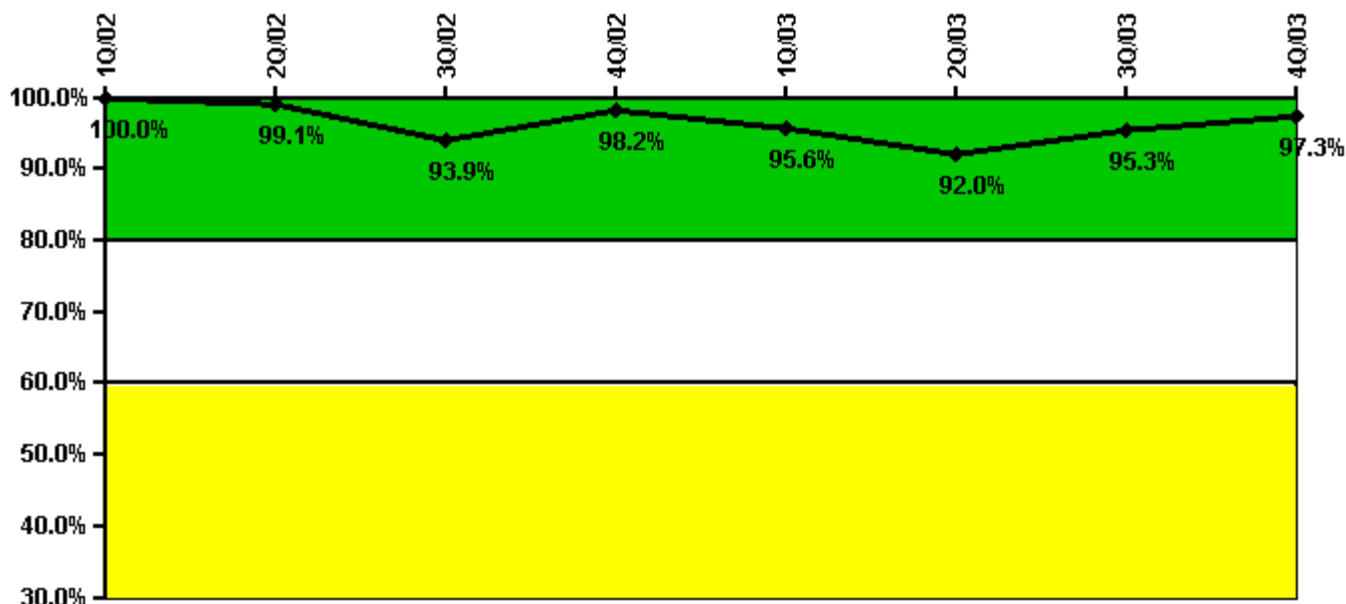
Thresholds: White < 90.0% Yellow < 70.0%

#### Notes

Drill/Exercise Performance	1Q/02	2Q/02	3Q/02	4Q/02	1Q/03	2Q/03	3Q/03	4Q/03
Successful opportunities	54.0	121.0	119.0	53.0	111.0	41.0	72.0	79.0
Total opportunities	54.0	124.0	125.0	54.0	114.0	42.0	74.0	81.0
Indicator value	97.4%	97.0%	96.7%	96.7%	96.6%	97.0%	97.1%	97.3%

Licensee Comments: none

### ERO Drill Participation



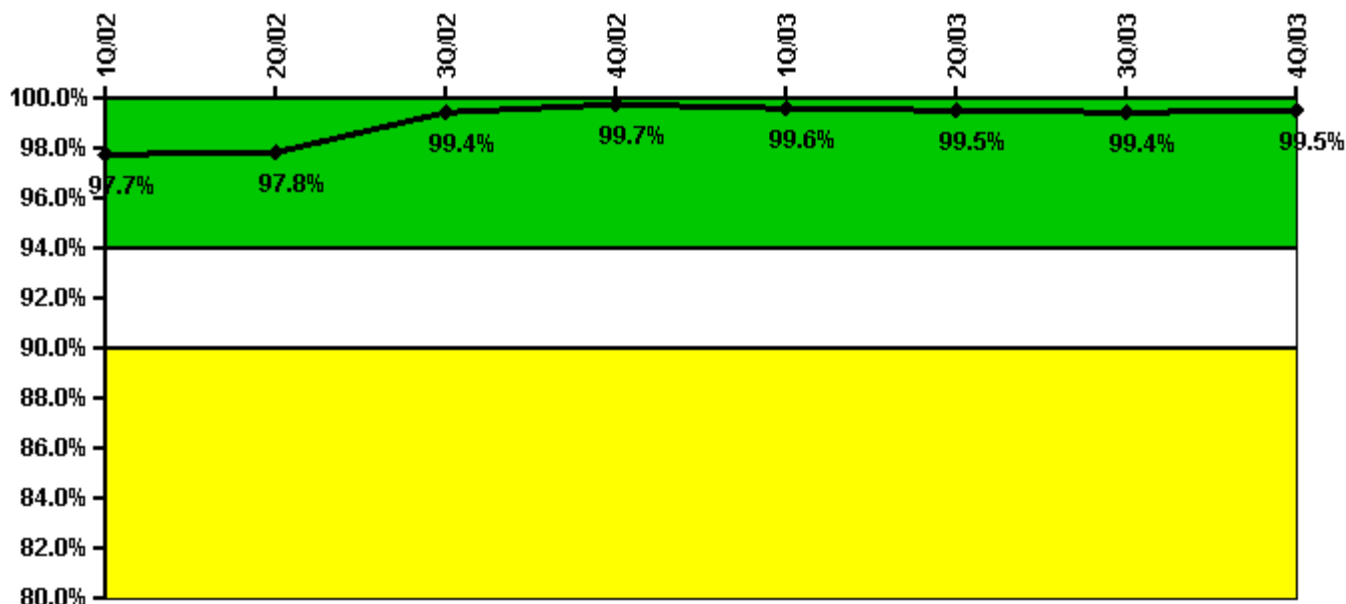
Thresholds: White < 80.0% Yellow < 60.0%

#### Notes

ERO Drill Participation	1Q/02	2Q/02	3Q/02	4Q/02	1Q/03	2Q/03	3Q/03	4Q/03
Participating Key personnel	116.0	114.0	108.0	109.0	109.0	104.0	101.0	108.0
Total Key personnel	116.0	115.0	115.0	111.0	114.0	113.0	106.0	111.0
Indicator value	100.0%	99.1%	93.9%	98.2%	95.6%	92.0%	95.3%	97.3%

Licensee Comments: none

### Alert & Notification System



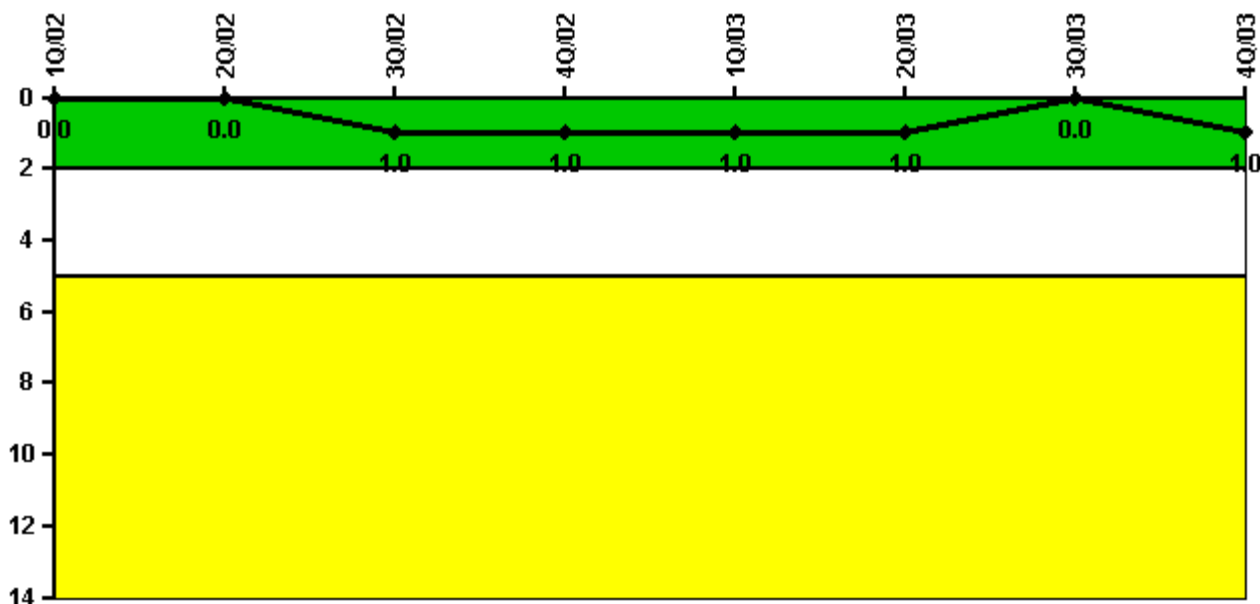
Thresholds: White < 94.0% Yellow < 90.0%

#### Notes

Alert & Notification System	1Q/02	2Q/02	3Q/02	4Q/02	1Q/03	2Q/03	3Q/03	4Q/03
Successful siren-tests	562	608	657	610	606	605	609	611
Total sirens-tests	564	611	658	611	611	611	611	611
Indicator value	97.7%	97.8%	99.4%	99.7%	99.6%	99.5%	99.4%	99.5%

Licensee Comments: none

### Occupational Exposure Control Effectiveness



Thresholds: White > 2.0 Yellow > 5.0

**Notes**

Occupational Exposure Control Effectiveness	1Q/02	2Q/02	3Q/02	4Q/02	1Q/03	2Q/03	3Q/03	4Q/03
High radiation area occurrences	0	0	1	0	0	0	0	1
Very high radiation area occurrences	0	0	0	0	0	0	0	0
Unintended exposure occurrences	0	0	0	0	0	0	0	0
Indicator value	0	0	1	1	1	1	0	1

Licensee Comments: none

### RETS/ODCM Radiological Effluent



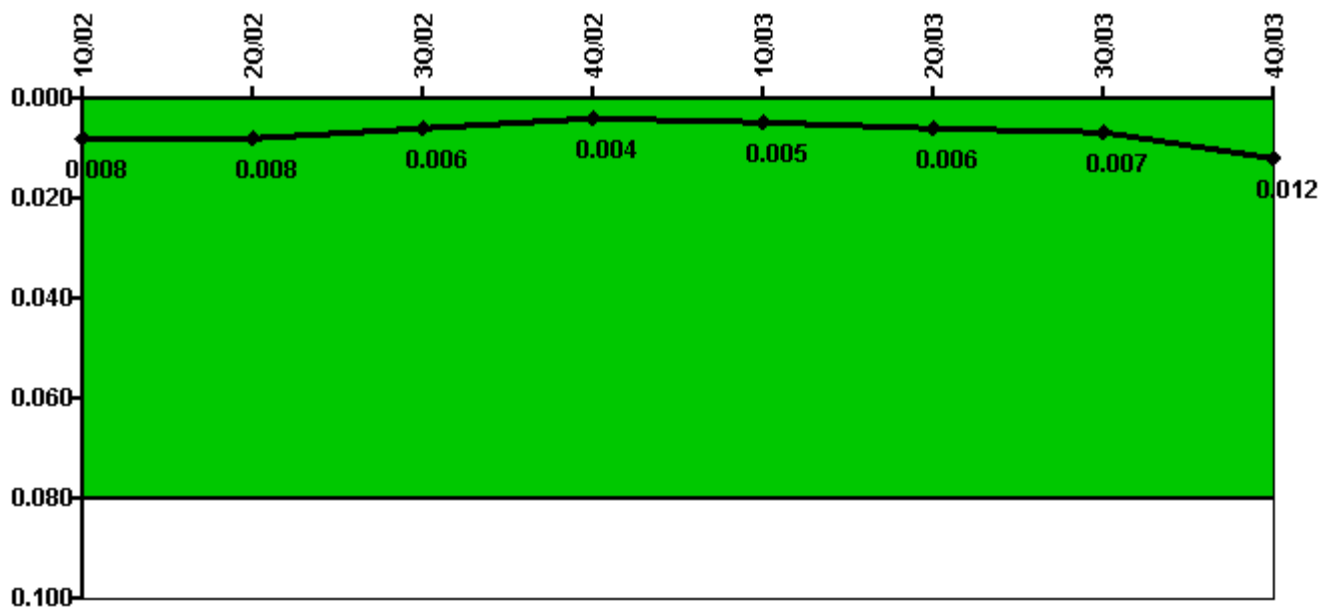
Thresholds: White > 1.0 Yellow > 3.0

#### Notes

RETS/ODCM Radiological Effluent	1Q/02	2Q/02	3Q/02	4Q/02	1Q/03	2Q/03	3Q/03	4Q/03
RETS/ODCM occurrences	0	0	0	0	0	0	0	0
Indicator value	0	0	0	0	0	0	0	0

Licensee Comments: none

### Protected Area Security Performance Index



Thresholds: White > 0.080

#### Notes

Protected Area Security Performance Index	1Q/02	2Q/02	3Q/02	4Q/02	1Q/03	2Q/03	3Q/03	4Q/03
IDS compensatory hours	56.55	67.01	61.36	9.39	85.30	112.43	12.30	48.15
CCTV compensatory hours	0	0.8	5.3	7.2	0	0	34.7	87.7
IDS normalization factor	3.00	3.00	3.00	3.00	3.00	3.00	3.00	3.00
CCTV normalization factor	1.0	1.0	1.0	1.0	1.0	1.0	1.0	1.0
Index Value	0.008	0.008	0.006	0.004	0.005	0.006	0.007	0.012

Licensee Comments: none



### Personnel Screening Program



Thresholds: White > 2.0 Yellow > 5.0

#### Notes

Personnel Screening Program	1Q/02	2Q/02	3Q/02	4Q/02	1Q/03	2Q/03	3Q/03	4Q/03
Program failures	0	0	0	0	0	0	0	0
Indicator value	0	0	0	0	0	0	0	0

Licensee Comments: none

### FFD/Personnel Reliability



Thresholds: White > 2.0 Yellow > 5.0

#### Notes

FFD/Personnel Reliability	1Q/02	2Q/02	3Q/02	4Q/02	1Q/03	2Q/03	3Q/03	4Q/03
Program Failures	0	0	0	0	0	0	0	0
Indicator value	0	0	0	0	0	0	0	0

Licensee Comments: none

▲ [PI Summary](#) | [Inspection Findings Summary](#) | [Reactor Oversight Process](#)

Last Modified: January 23, 2004