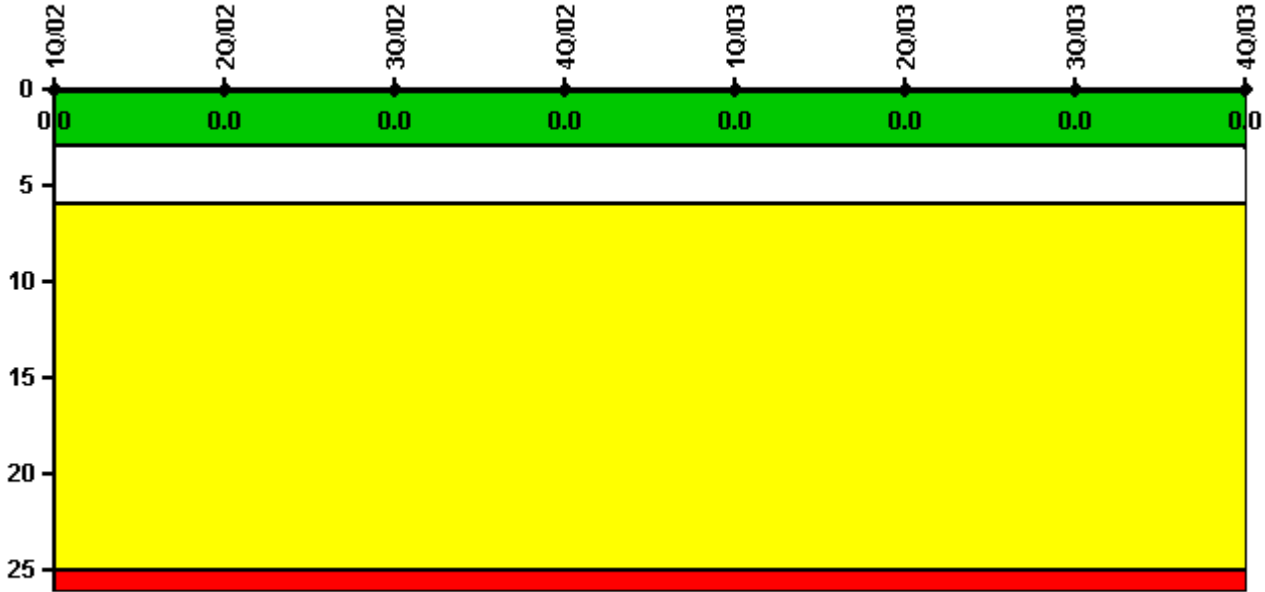


# Turkey Point 4

## 4Q/2003 Performance Indicators

Licensee's General Comments: none

### Unplanned Scrams per 7000 Critical Hrs



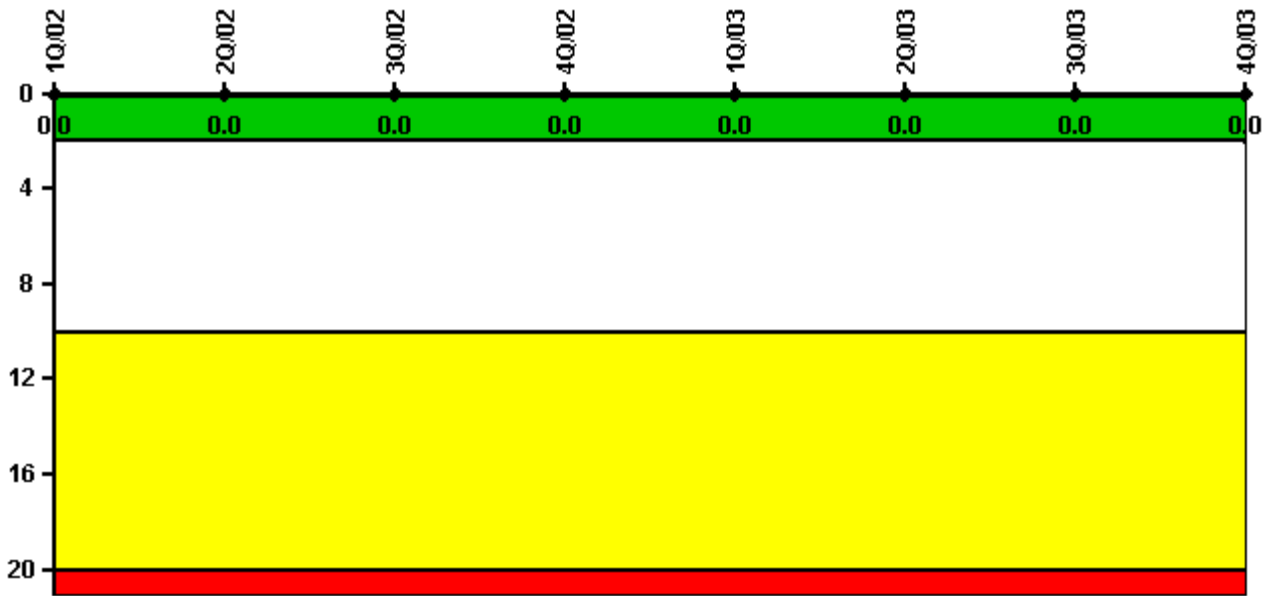
Thresholds: White > 3.0 Yellow > 6.0 Red > 25.0

### Notes

Unplanned Scrams per 7000 Critical Hrs	1Q/02	2Q/02	3Q/02	4Q/02	1Q/03	2Q/03	3Q/03	4Q/03
Unplanned scrams	0	0	0	0	0	0	0	0
Critical hours	1944.0	2032.2	2208.0	2209.0	2160.0	2183.0	2208.0	1506.1
Indicator value	0	0	0	0	0	0	0	0

Licensee Comments: none

### Scrams with Loss of Normal Heat Removal



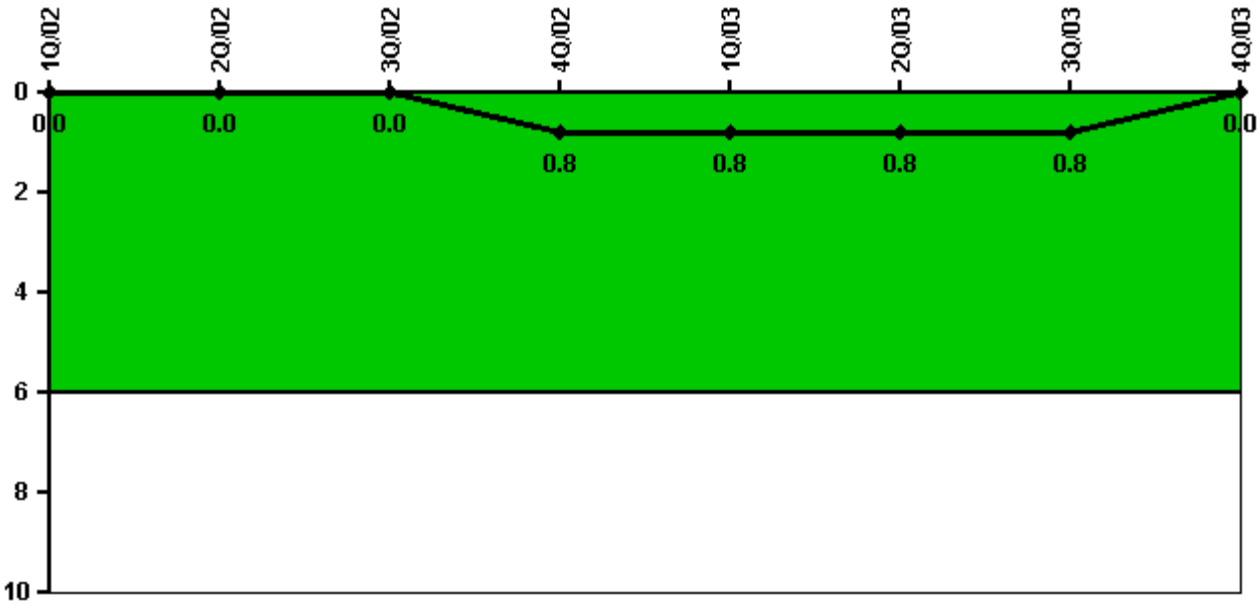
Thresholds: White > 2.0 Yellow > 10.0 Red > 20.0

#### Notes

Scrams with Loss of Normal Heat Removal	1Q/02	2Q/02	3Q/02	4Q/02	1Q/03	2Q/03	3Q/03	4Q/03
Scrams	0	0	0	0	0	0	0	0
Indicator value	0	0	0	0	0	0	0	0

Licensee Comments: none

### Unplanned Power Changes per 7000 Critical Hrs



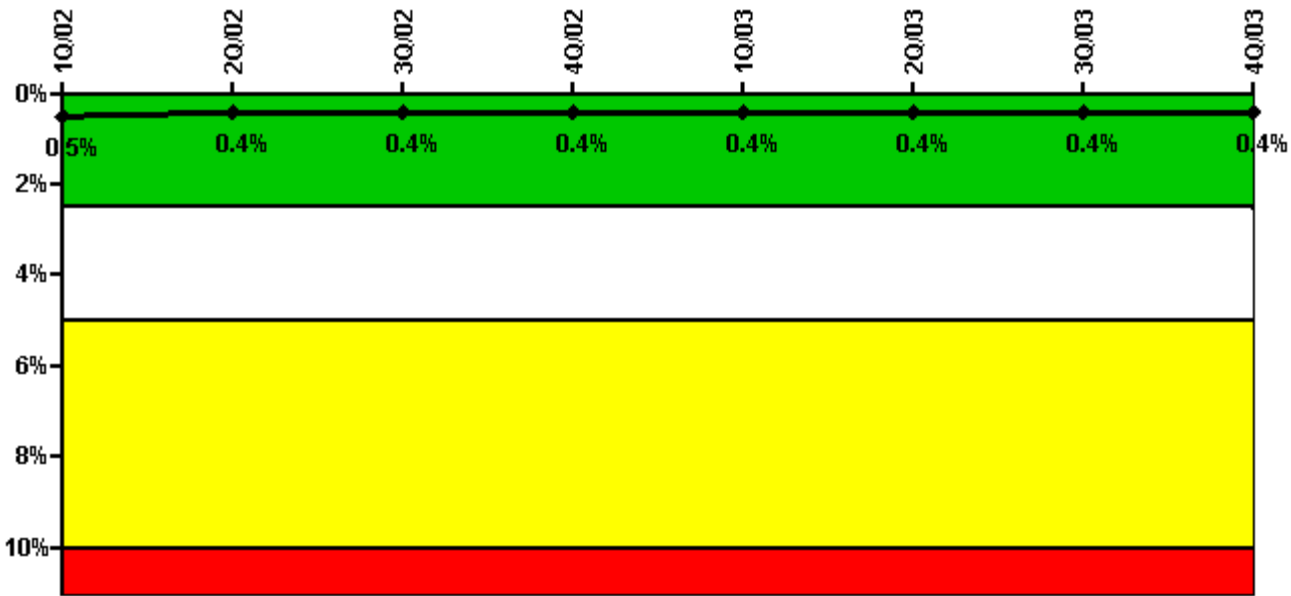
Thresholds: White > 6.0

#### Notes

Unplanned Power Changes per 7000 Critical Hrs	1Q/02	2Q/02	3Q/02	4Q/02	1Q/03	2Q/03	3Q/03	4Q/03
Unplanned power changes	0	0	0	1.0	0	0	0	0
Critical hours	1944.0	2032.2	2208.0	2209.0	2160.0	2183.0	2208.0	1506.1
Indicator value	0	0	0	0.8	0.8	0.8	0.8	0

Licensee Comments: none

### Safety System Unavailability, Emergency AC Power



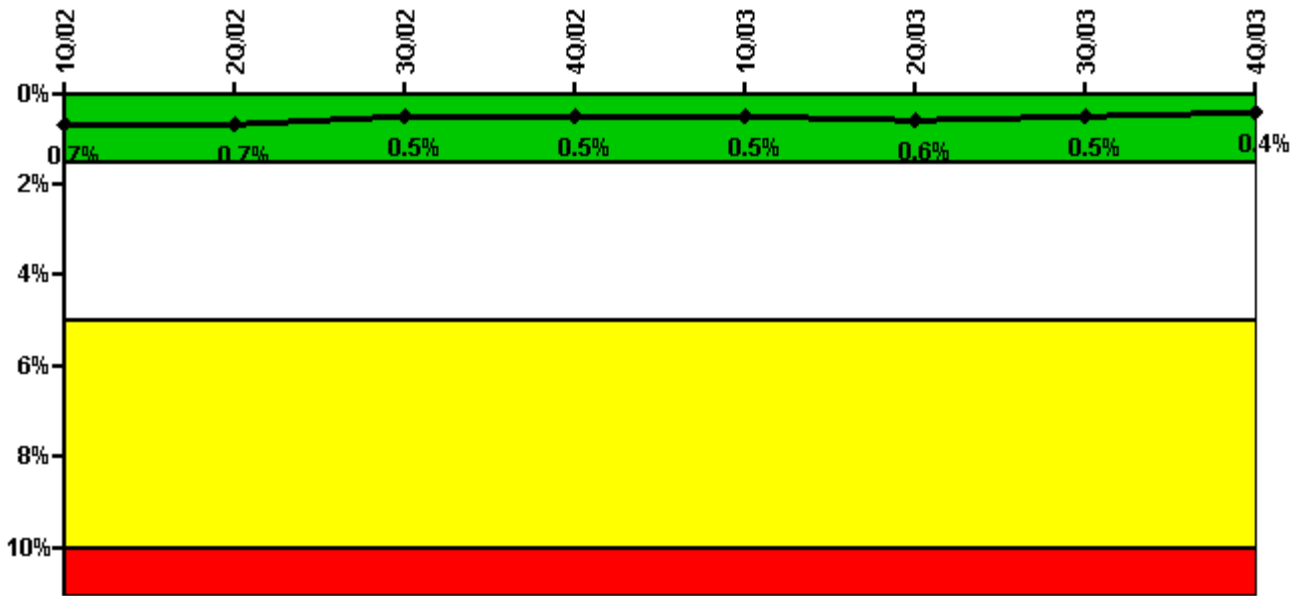
Thresholds: White > 2.5% Yellow > 5.0% Red > 10.0%

**Notes**

Safety System Unavailability, Emergency AC Power	1Q/02	2Q/02	3Q/02	4Q/02	1Q/03	2Q/03	3Q/03	4Q/03
<b>Train 1</b>								
Planned unavailable hours	2.90	2.40	0.80	3.20	1.60	8.60	4.40	1.60
Unplanned unavailable hours	9.10	0	0	0	0	7.30	4.50	0
Fault exposure hours	0	0	0	0	0	0	0	0
Effective Reset hours	0	0	0	0	0	0	0	0
Required hours	2056.80	2121.30	2208.00	2209.00	2160.00	2183.00	2208.00	1907.50
<b>Train 2</b>								
Planned unavailable hours	4.40	2.40	0.80	2.40	1.60	22.10	19.60	1.60
Unplanned unavailable hours	0	7.60	0	14.60	0	0	0	0
Fault exposure hours	0	0	0	0	0	0	0	0
Effective Reset hours	0	0	0	0	0	0	0	0
Required hours	2056.80	2121.30	2208.00	2209.00	2160.00	2183.00	2208.00	1907.50
Indicator value	0.5%	0.4%	0.4%	0.4%	0.4%	0.4%	0.4%	0.4%

Licensee Comments: none

### Safety System Unavailability, High Pressure Injection System (HPSI)



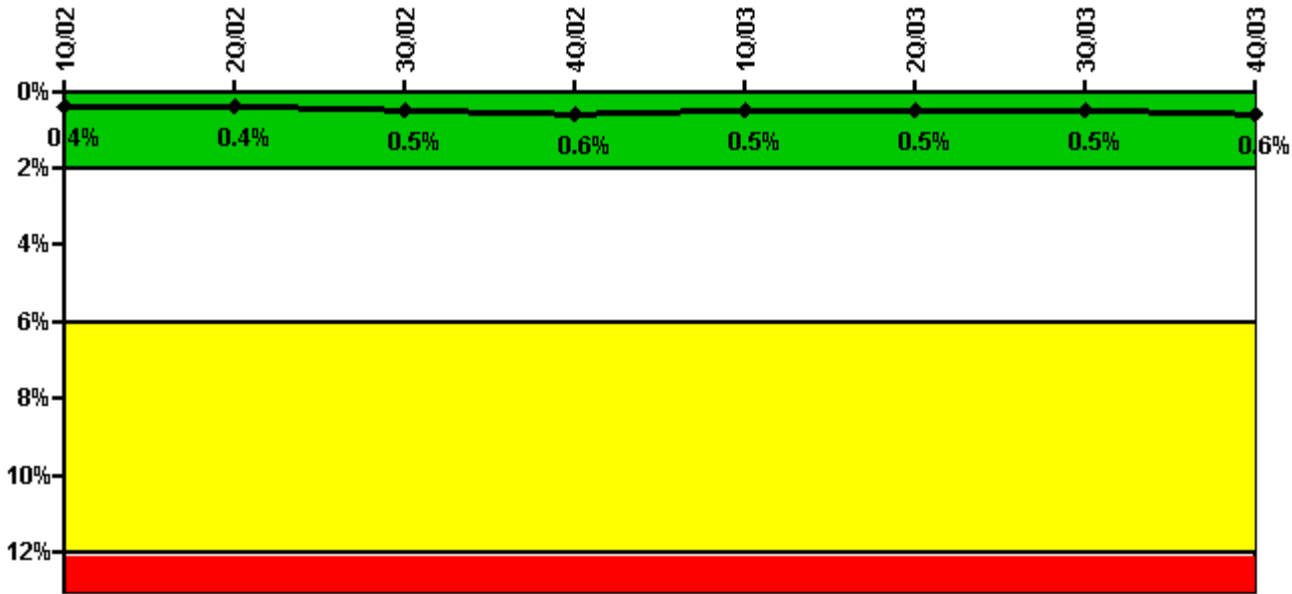
Thresholds: White > 1.5% Yellow > 5.0% Red > 10.0%

**Notes**

Safety System Unavailability, High Pressure Injection System (HPSI)	1Q/02	2Q/02	3Q/02	4Q/02	1Q/03	2Q/03	3Q/03	4Q/03
<b>Train 1</b>								
Planned unavailable hours	15.10	0	1.90	0	0	6.50	0	22.20
Unplanned unavailable hours	0	0	0	0	0	0	0	0
Fault exposure hours	0	0	0	0	0	0	0	0
Effective Reset hours	0	0	0	0	0	0	0	0
Required hours	1949.20	2050.50	2208.00	2209.00	2160.00	2183.00	2208.00	1586.00
<b>Train 2</b>								
Planned unavailable hours	8.80	20.20	0	5.50	13.00	3.00	0	0.80
Unplanned unavailable hours	0	0	0	0	0	0	0	0
Fault exposure hours	0	0	0	0	0	0	0	0
Effective Reset hours	0	0	0	0	0	0	0	0
Required hours	1949.20	2050.50	2208.00	2209.00	2160.00	2183.00	2208.00	1586.00
<b>Indicator value</b>	<b>0.7%</b>	<b>0.7%</b>	<b>0.5%</b>	<b>0.5%</b>	<b>0.5%</b>	<b>0.6%</b>	<b>0.5%</b>	<b>0.4%</b>

Licensee Comments: none

### Safety System Unavailability, Heat Removal System (AFW)



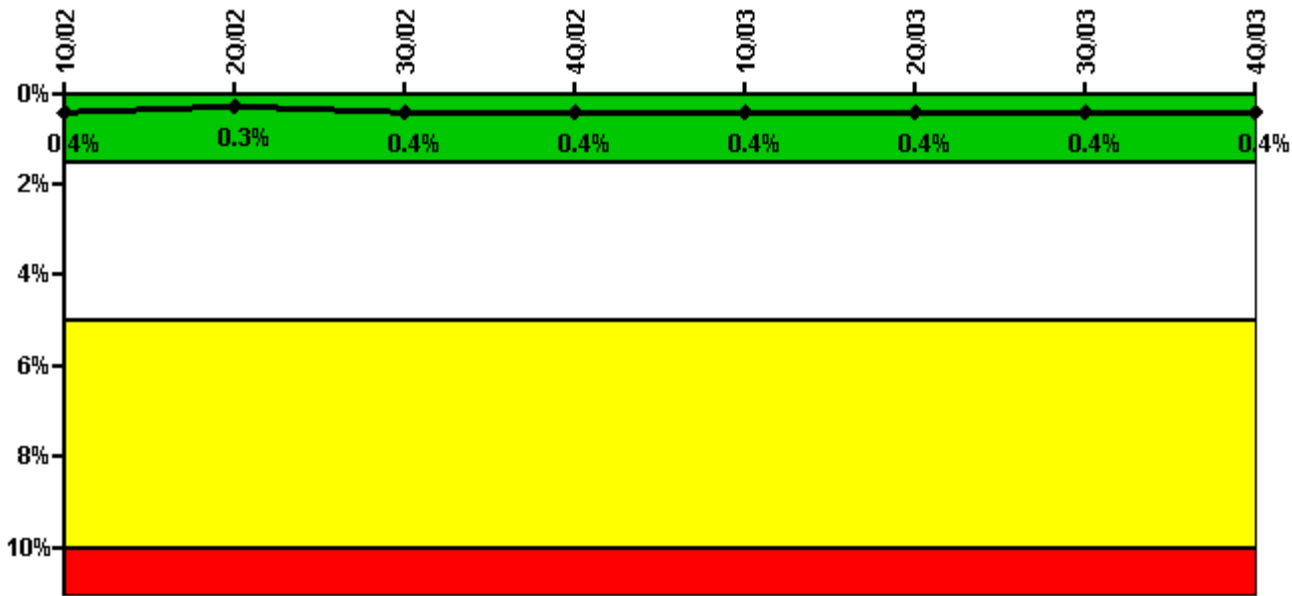
Thresholds: White > 2.0% Yellow > 6.0% Red > 12.0%

**Notes**

Safety System Unavailability, Heat Removal System (AFW)	1Q/02	2Q/02	3Q/02	4Q/02	1Q/03	2Q/03	3Q/03	4Q/03
<b>Train 1</b>								
Planned unavailable hours	0	11.80	8.00	21.60	0	12.80	4.90	38.00
Unplanned unavailable hours	0	0	0	6.90	11.20	2.50	0	0
Fault exposure hours	0	0	0	0	0	0	0	0
Effective Reset hours	0	0	0	0	0	0	0	0
Required hours	1949.20	2050.50	2208.00	2209.00	2160.00	2183.00	2208.00	1586.00
<b>Train 2</b>								
Planned unavailable hours	0	0	54.00	42.70	0	0	34.80	4.90
Unplanned unavailable hours	0	0	0	0	0	0	16.30	19.30
Fault exposure hours	0	0	0	0	0	0	0	0
Effective Reset hours	0	0	0	0	0	0	0	0
Required hours	1949.20	2050.50	2208.00	2209.00	2160.00	2183.00	2208.00	1586.00
Indicator value	0.4%	0.4%	0.5%	0.6%	0.5%	0.5%	0.5%	0.6%

Licensee Comments: none

### Safety System Unavailability, Residual Heat Removal System



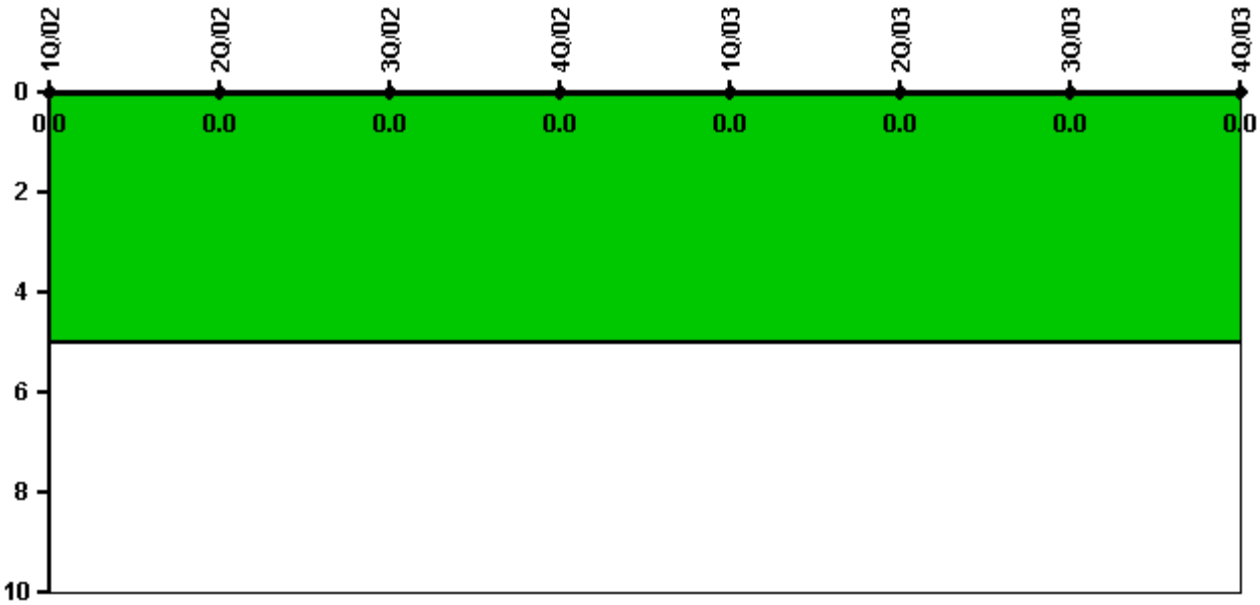
Thresholds: White > 1.5% Yellow > 5.0% Red > 10.0%

**Notes**

Safety System Unavailability, Residual Heat Removal System	1Q/02	2Q/02	3Q/02	4Q/02	1Q/03	2Q/03	3Q/03	4Q/03
<b>Train 1</b>								
Planned unavailable hours	30.40	3.50	19.00	1.90	2.90	2.00	27.80	1.50
Unplanned unavailable hours	0	0	0	0	0	0	0	0
Fault exposure hours	0	0	0	0	0	0	0	0
Effective Reset hours	0	0	0	0	0	0	0	0
Required hours	1980.00	2167.30	2208.00	2209.00	2160.00	2183.00	2208.00	1967.00
<b>Train 2</b>								
Planned unavailable hours	22.10	3.10	22.30	15.50	1.60	2.00	23.70	1.50
Unplanned unavailable hours	0	0.10	0	0	0	0	0	0
Fault exposure hours	0	0	0	0	0	0	0	0
Effective Reset hours	0	0	0	0	0	0	0	0
Required hours	1980.00	2167.30	2208.00	2209.00	2160.00	2183.00	2208.00	1967.00
Indicator value	0.4%	0.3%	0.4%	0.4%	0.4%	0.4%	0.4%	0.4%

Licensee Comments: none

### Safety System Functional Failures (PWR)



Thresholds: White > 5.0

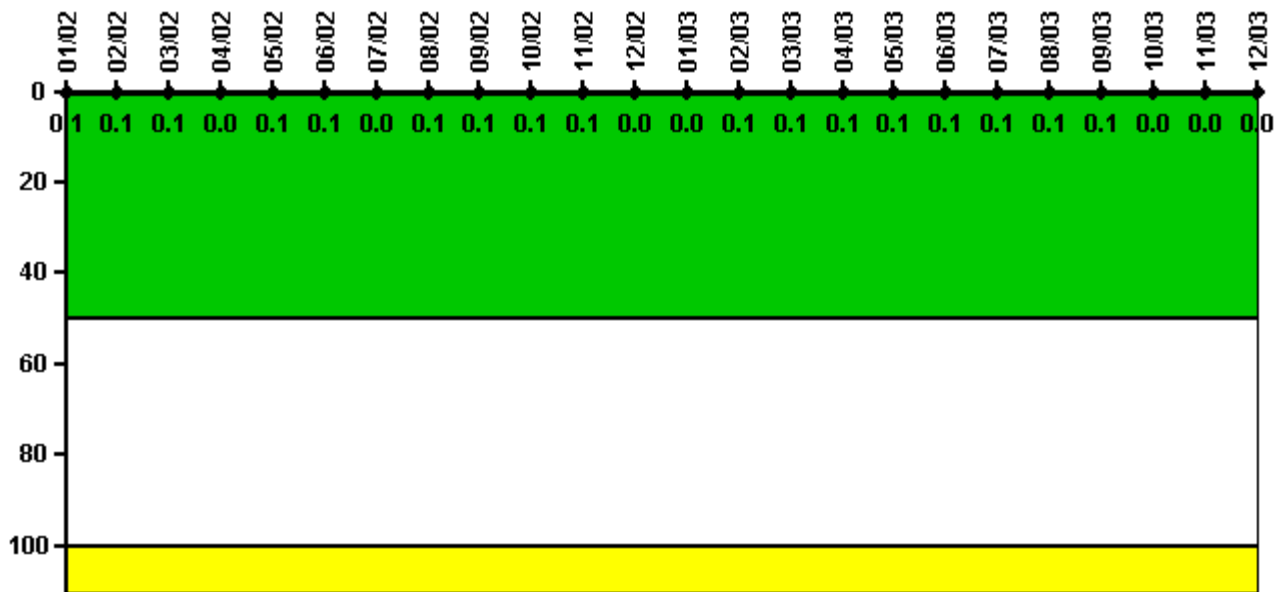
#### Notes

Safety System Functional Failures (PWR)	1Q/02	2Q/02	3Q/02	4Q/02	1Q/03	2Q/03	3Q/03	4Q/03
Safety System Functional Failures	0	0	0	0	0	0	0	0
Indicator value	0	0	0	0	0	0	0	0

Licensee Comments: none



### Reactor Coolant System Activity



Thresholds: White > 50.0 Yellow > 100.0

#### Notes

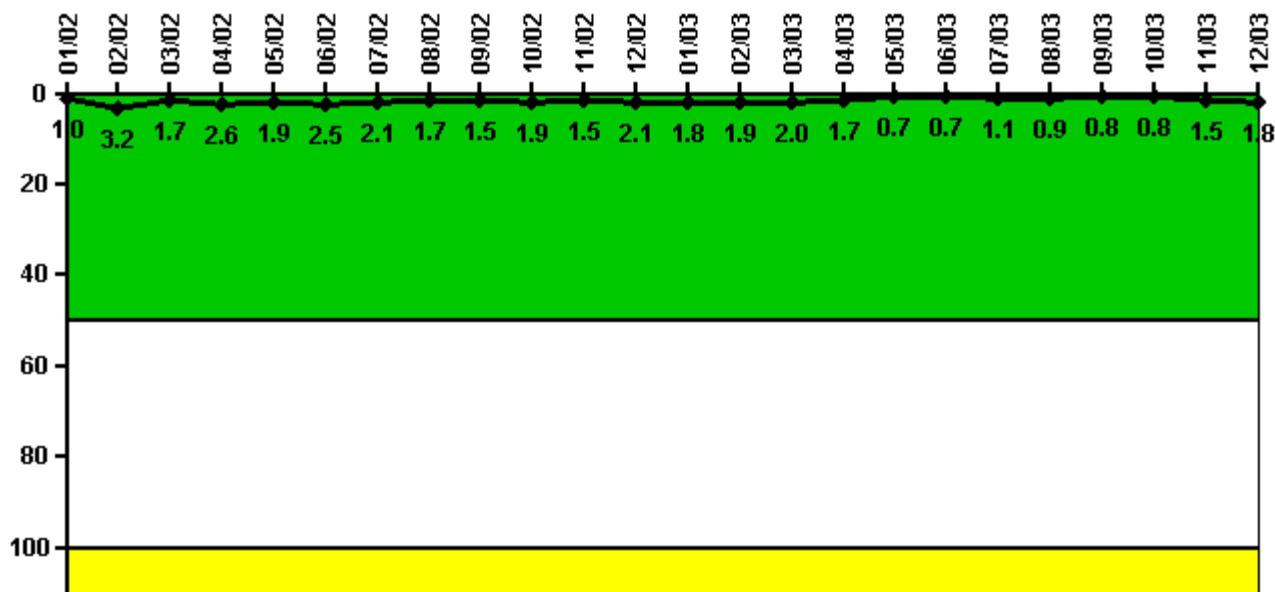
Reactor Coolant System Activity	1/02	2/02	3/02	4/02	5/02	6/02	7/02	8/02	9/02	10/02	11/02	12/02
Maximum activity	0.001040	0.001020	0.001090	0.000438	0.000558	0.000854	0.000463	0.000519	0.000656	0.000530	0.000682	0.000391
Technical specification limit	1.0	1.0	1.0	1.0	1.0	1.0	1.0	1.0	1.0	1.0	1.0	1.0
Indicator value	0.1	0.1	0.1	0	0.1	0.1	0	0.1	0.1	0.1	0.1	0

Reactor Coolant System Activity	1/03	2/03	3/03	4/03	5/03	6/03	7/03	8/03	9/03	10/03	11/03	12/03
Maximum activity	0.000424	0.000780	0.000565	0.000678	0.000723	0.000706	0.000799	0.000739	0.000972	0	0.000382	0.000398
Technical specification limit	1.0	1.0	1.0	1.0	1.0	1.0	1.0	1.0	1.0	1.0	1.0	1.0
Indicator value	0	0.1	0.1	0.1	0.1	0.1	0.1	0.1	0.1	0	0	0

Licensee Comments: none

### Reactor Coolant System Leakage



Thresholds: White > 50.0 Yellow > 100.0

#### Notes

Reactor Coolant System Leakage	1/02	2/02	3/02	4/02	5/02	6/02	7/02	8/02	9/02	10/02	11/02	12/02
Maximum leakage	0.100	0.320	0.170	0.260	0.190	0.250	0.210	0.170	0.150	0.190	0.150	0.210
Technical specification limit	10.0	10.0	10.0	10.0	10.0	10.0	10.0	10.0	10.0	10.0	10.0	10.0
Indicator value	1.0	3.2	1.7	2.6	1.9	2.5	2.1	1.7	1.5	1.9	1.5	2.1

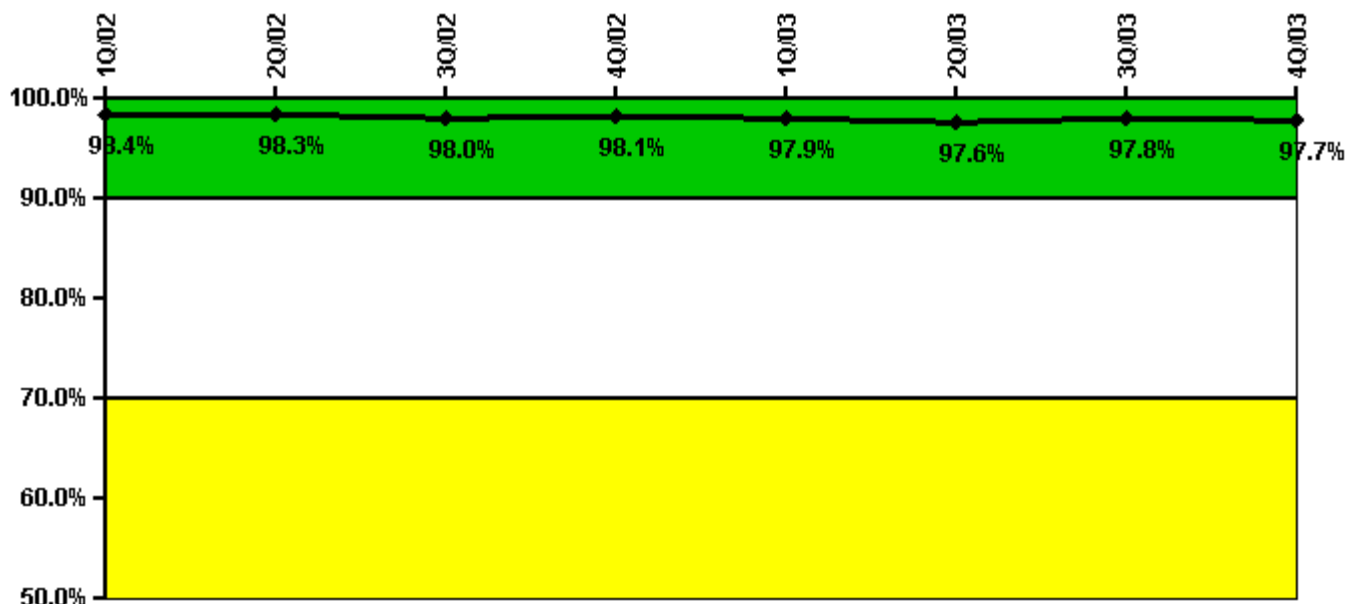
  

Reactor Coolant System Leakage	1/03	2/03	3/03	4/03	5/03	6/03	7/03	8/03	9/03	10/03	11/03	12/03
Maximum leakage	0.180	0.190	0.200	0.170	0.070	0.070	0.110	0.090	0.080	0.080	0.150	0.180
Technical specification limit	10.0	10.0	10.0	10.0	10.0	10.0	10.0	10.0	10.0	10.0	10.0	10.0
Indicator value	1.8	1.9	2.0	1.7	0.7	0.7	1.1	0.9	0.8	0.8	1.5	1.8

Licensee Comments:

12/03: Unit 4 Cycle 21 refueling outage 10/6/2003 - 11/5/2003

### Drill/Exercise Performance



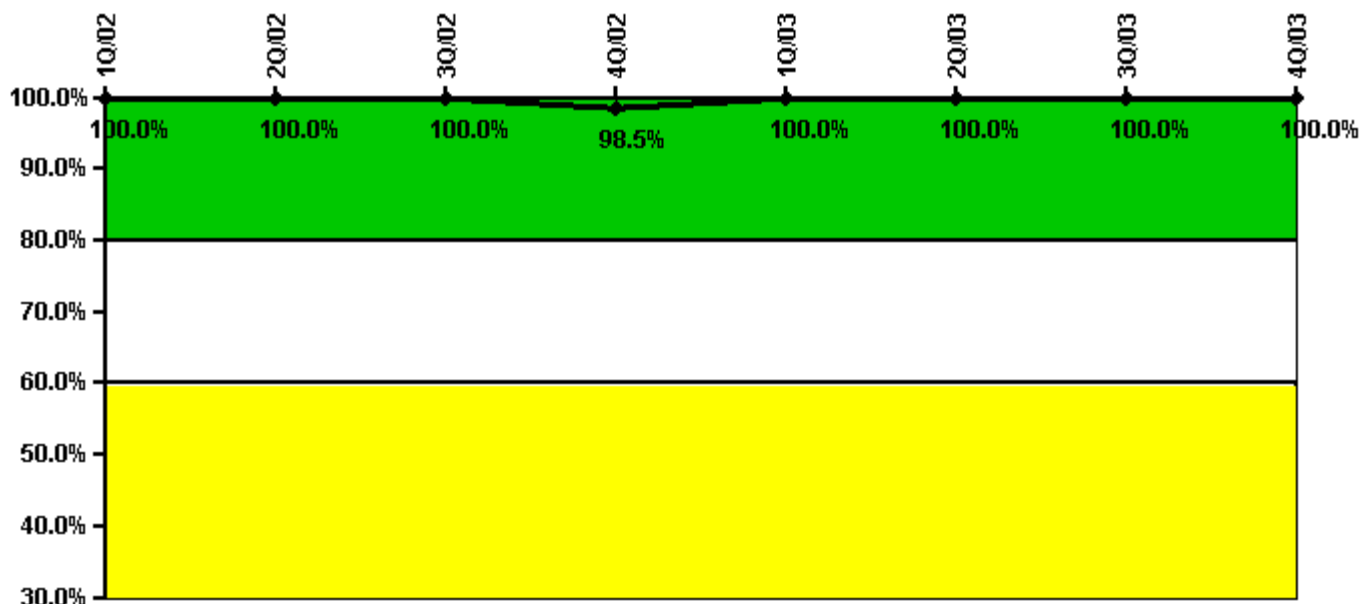
Thresholds: White < 90.0% Yellow < 70.0%

#### Notes

Drill/Exercise Performance	1Q/02	2Q/02	3Q/02	4Q/02	1Q/03	2Q/03	3Q/03	4Q/03
Successful opportunities	46.0	38.0	39.0	37.0	68.0	56.0	26.0	25.0
Total opportunities	49.0	38.0	40.0	37.0	70.0	58.0	26.0	25.0
Indicator value	98.4%	98.3%	98.0%	98.1%	97.9%	97.6%	97.8%	97.7%

Licensee Comments: none

### ERO Drill Participation



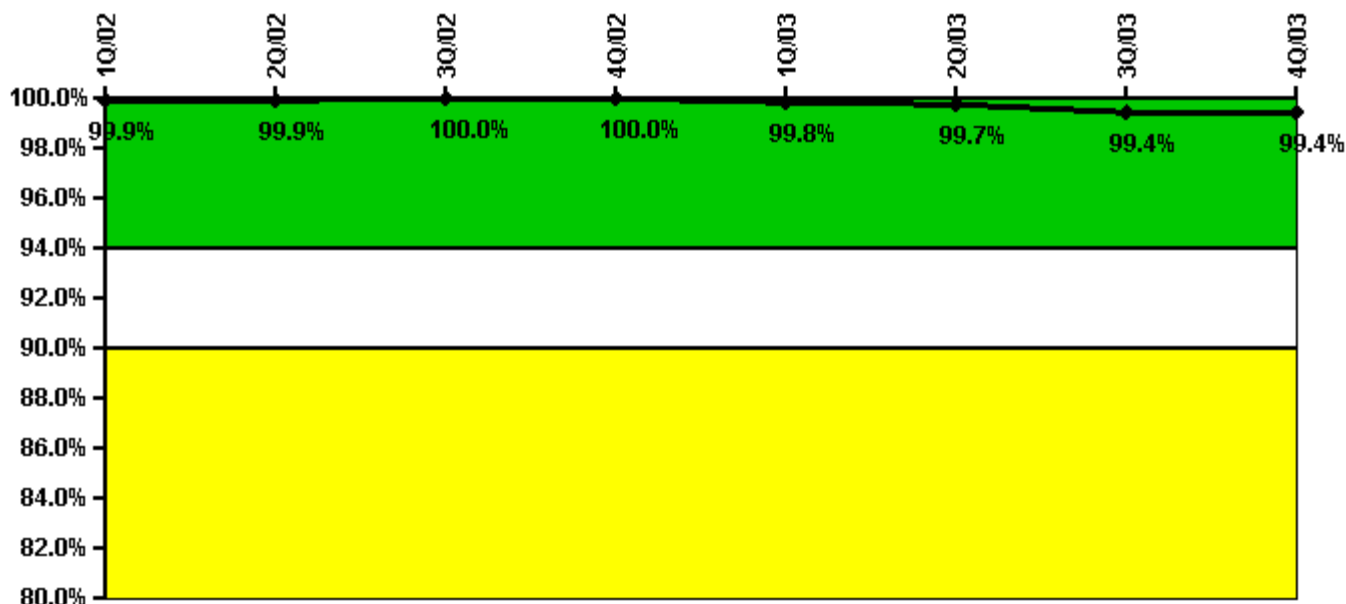
Thresholds: White < 80.0% Yellow < 60.0%

#### Notes

ERO Drill Participation	1Q/02	2Q/02	3Q/02	4Q/02	1Q/03	2Q/03	3Q/03	4Q/03
Participating Key personnel	70.0	67.0	66.0	65.0	67.0	69.0	68.0	70.0
Total Key personnel	70.0	67.0	66.0	66.0	67.0	69.0	68.0	70.0
Indicator value	100.0%	100.0%	100.0%	98.5%	100.0%	100.0%	100.0%	100.0%

Licensee Comments: none

### Alert & Notification System



Thresholds: White < 94.0% Yellow < 90.0%

#### Notes

Alert & Notification System	1Q/02	2Q/02	3Q/02	4Q/02	1Q/03	2Q/03	3Q/03	4Q/03
Successful siren-tests	329	376	329	376	279	375	278	376
Total sirens-tests	329	376	329	376	282	376	282	376
Indicator value	99.9%	99.9%	100.0%	100.0%	99.8%	99.7%	99.4%	99.4%

Licensee Comments: none

### Occupational Exposure Control Effectiveness



Thresholds: White > 2.0 Yellow > 5.0

**Notes**

Occupational Exposure Control Effectiveness	1Q/02	2Q/02	3Q/02	4Q/02	1Q/03	2Q/03	3Q/03	4Q/03
High radiation area occurrences	0	0	0	0	0	0	0	0
Very high radiation area occurrences	0	0	0	0	0	0	0	0
Unintended exposure occurrences	0	0	0	0	0	0	0	0
Indicator value	0	0	0	0	0	0	0	0

Licensee Comments: none

### RETS/ODCM Radiological Effluent



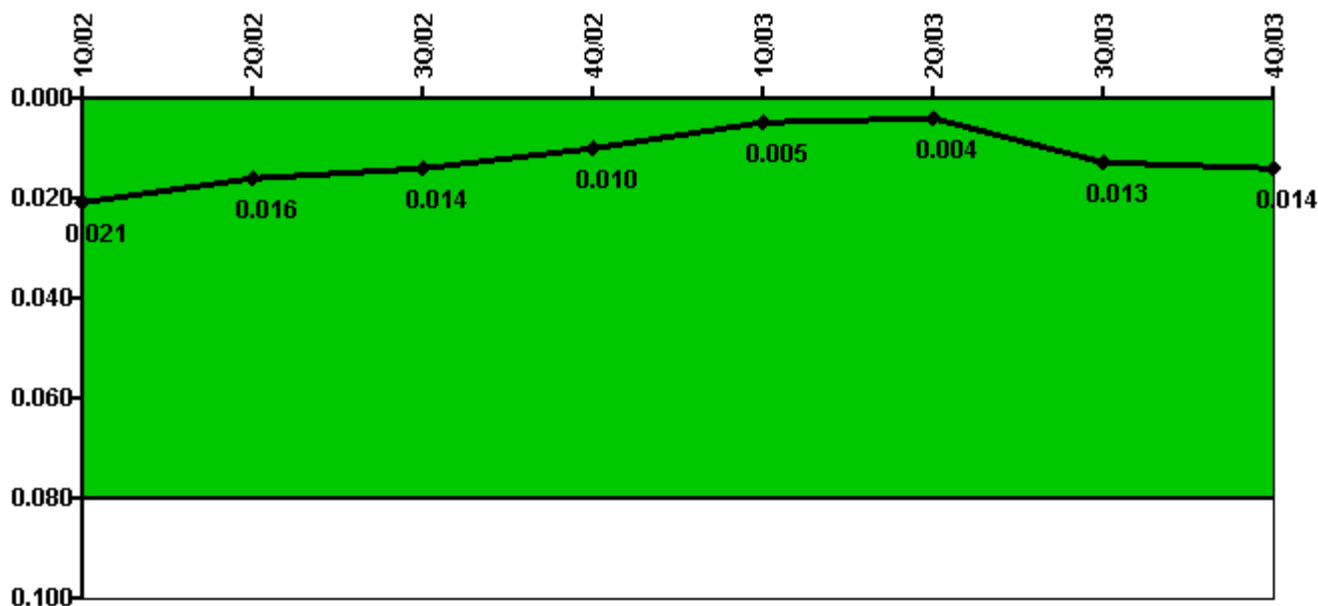
Thresholds: White > 1.0 Yellow > 3.0

#### Notes

RETS/ODCM Radiological Effluent	1Q/02	2Q/02	3Q/02	4Q/02	1Q/03	2Q/03	3Q/03	4Q/03
RETS/ODCM occurrences	0	0	0	0	0	0	0	0
Indicator value	0	0	0	0	0	0	0	0

Licensee Comments: none

### Protected Area Security Performance Index



Thresholds: White > 0.080

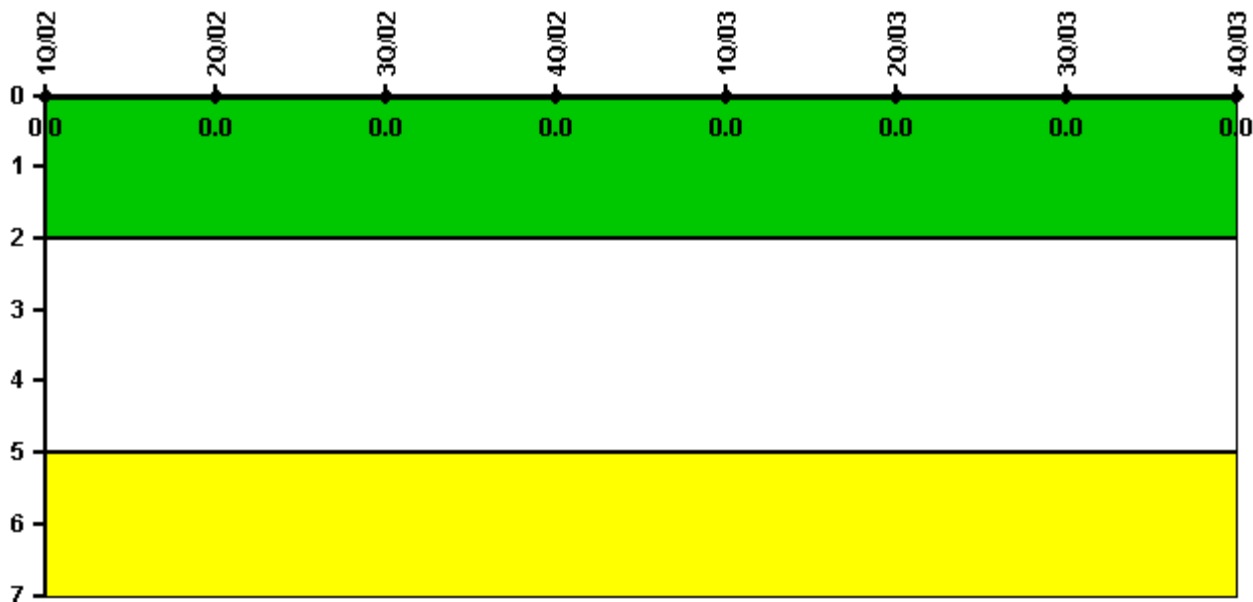
#### Notes

Protected Area Security Performance Index	1Q/02	2Q/02	3Q/02	4Q/02	1Q/03	2Q/03	3Q/03	4Q/03
IDS compensatory hours	156.70	122.20	40.70	10.50	0	69.90	33.60	20.50
CCTV compensatory hours	0	0	0	0	0	0	369.4	6.6
IDS normalization factor	1.95	1.95	1.95	1.95	1.95	1.95	1.95	1.95
CCTV normalization factor	2.2	2.2	2.2	2.2	2.2	2.2	2.2	2.2
Index Value	0.021	0.016	0.014	0.010	0.005	0.004	0.013	0.014

Licensee Comments: none



### Personnel Screening Program



Thresholds: White > 2.0 Yellow > 5.0

#### Notes

Personnel Screening Program	1Q/02	2Q/02	3Q/02	4Q/02	1Q/03	2Q/03	3Q/03	4Q/03
Program failures	0	0	0	0	0	0	0	0
Indicator value	0	0	0	0	0	0	0	0

Licensee Comments: none

### FFD/Personnel Reliability



Thresholds: White > 2.0 Yellow > 5.0

#### Notes

FFD/Personnel Reliability	1Q/02	2Q/02	3Q/02	4Q/02	1Q/03	2Q/03	3Q/03	4Q/03
Program Failures	0	0	0	0	0	0	0	0
Indicator value	0	0	0	0	0	0	0	0

Licensee Comments: none

▲ [PI Summary](#) | [Inspection Findings Summary](#) | [Reactor Oversight Process](#)

Last Modified: January 23, 2004