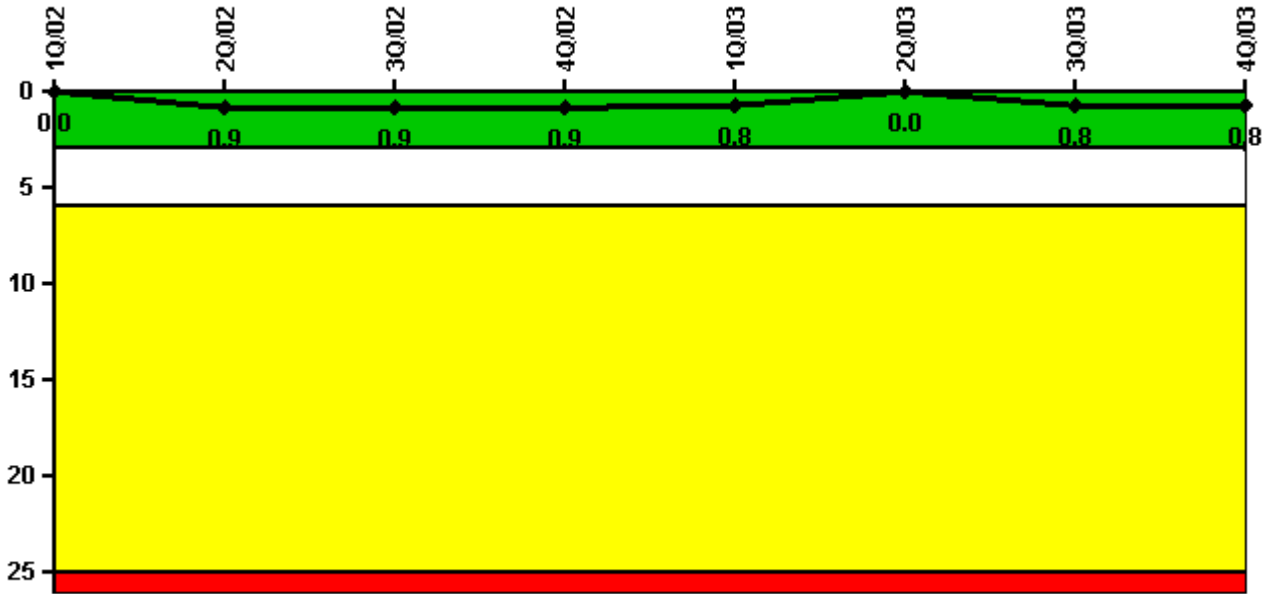


Susquehanna 1

4Q/2003 Performance Indicators

Licensee's General Comments: none

Unplanned Scrams per 7000 Critical Hrs



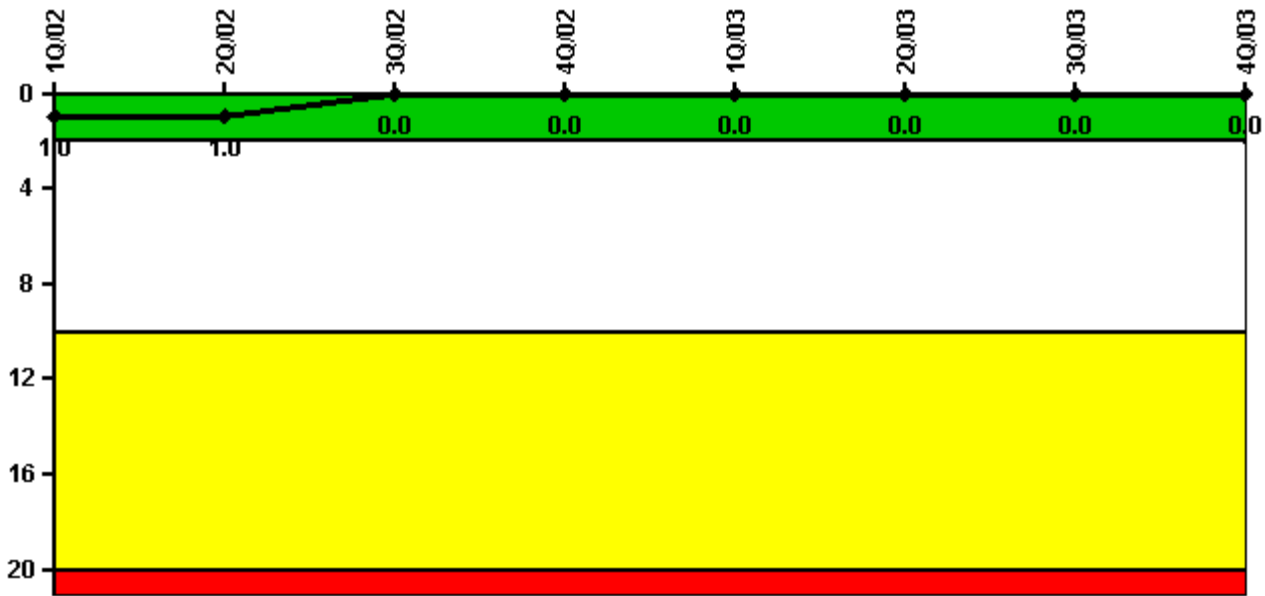
Thresholds: White > 3.0 Yellow > 6.0 Red > 25.0

Notes

Unplanned Scrams per 7000 Critical Hrs	1Q/02	2Q/02	3Q/02	4Q/02	1Q/03	2Q/03	3Q/03	4Q/03
Unplanned scrams	0	1.0	0	0	0	0	1.0	0
Critical hours	1443.7	1701.6	2208.0	2209.0	2160.0	2183.0	2068.3	2209.0
Indicator value	0	0.9	0.9	0.9	0.8	0	0.8	0.8

Licensee Comments: none

Scrams with Loss of Normal Heat Removal



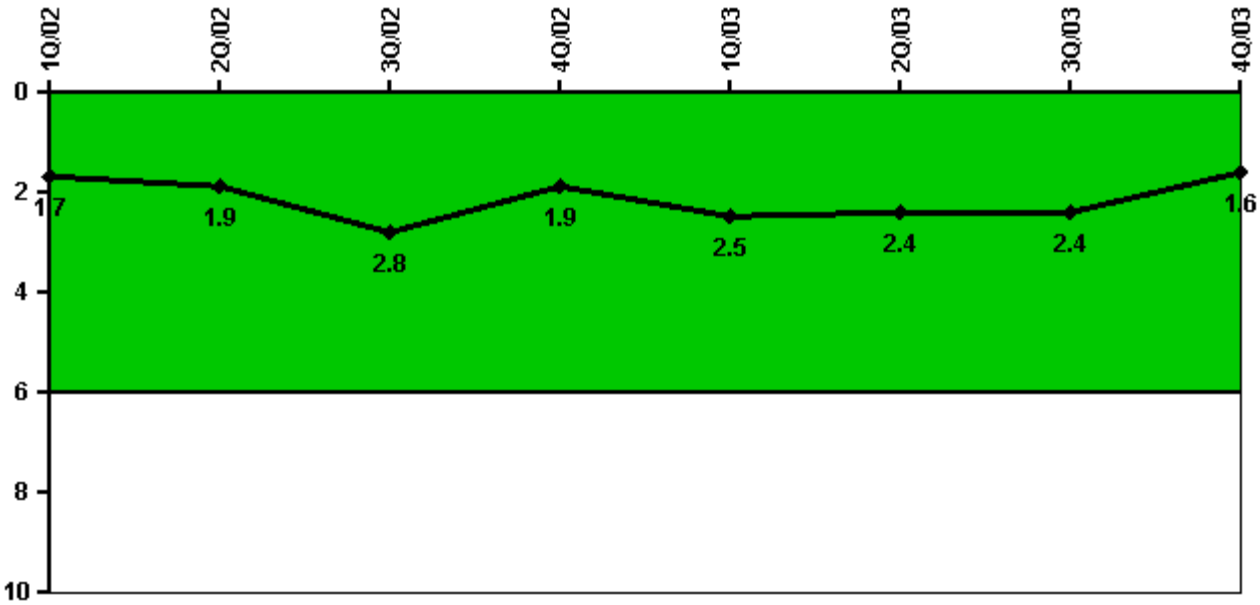
Thresholds: White > 2.0 Yellow > 10.0 Red > 20.0

Notes

Scrams with Loss of Normal Heat Removal	1Q/02	2Q/02	3Q/02	4Q/02	1Q/03	2Q/03	3Q/03	4Q/03
Scrams	0	0	0	0	0	0	0	0
Indicator value	1.0	1.0	0	0	0	0	0	0

Licensee Comments: none

Unplanned Power Changes per 7000 Critical Hrs



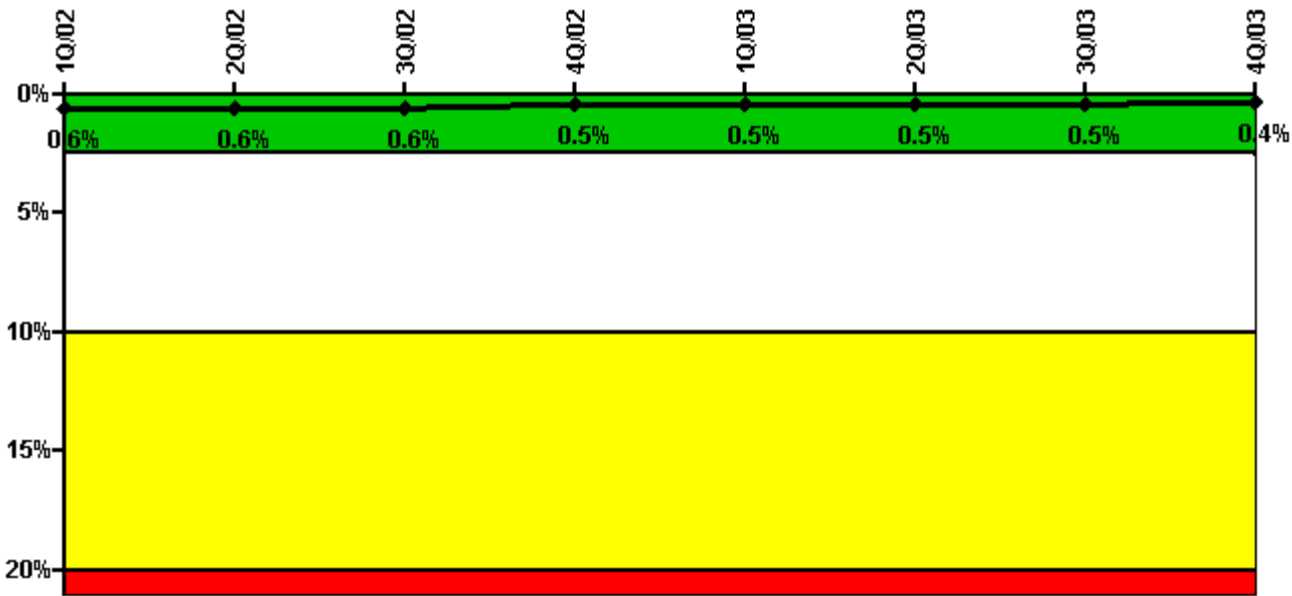
Thresholds: White > 6.0

Notes

Unplanned Power Changes per 7000 Critical Hrs	1Q/02	2Q/02	3Q/02	4Q/02	1Q/03	2Q/03	3Q/03	4Q/03
Unplanned power changes	0	0	1.0	1.0	1.0	0	1.0	0
Critical hours	1443.7	1701.6	2208.0	2209.0	2160.0	2183.0	2068.3	2209.0
Indicator value	1.7	1.9	2.8	1.9	2.5	2.4	2.4	1.6

Licensee Comments: none

Safety System Unavailability, Emergency AC Power, >2EDG



Thresholds: White > 2.5% Yellow > 10.0% Red > 20.0%

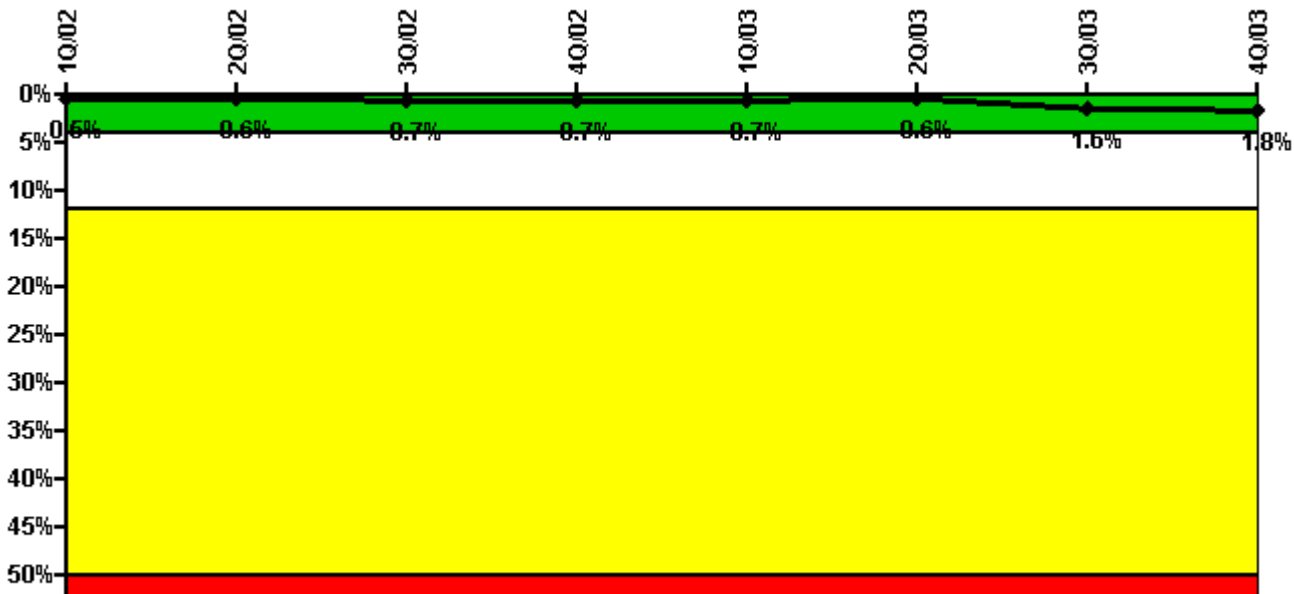
Notes

Safety System Unavailability, Emergency AC Power, >2EDG	1Q/02	2Q/02	3Q/02	4Q/02	1Q/03	2Q/03	3Q/03	4Q/03
Train 1								
Planned unavailable hours	0	0	1.90	0	0	7.90	37.30	0
Unplanned unavailable hours	2.00	0	0	9.10	1.70	12.80	0	0
Fault exposure hours	0	0	0	0	0	0	0	0
Effective Reset hours	0	0	0	0	0	0	0	0
Required hours	2160.00	2184.00	2208.00	2208.00	2160.00	2184.00	2208.00	2208.00
Train 2								
Planned unavailable hours	0	0	0	7.60	84.00	0	0	0.90
Unplanned unavailable hours	0	1.70	2.30	0	0.40	0	0	0
Fault exposure hours	0	0	0	0	0	0	0	0
Effective Reset hours	0	0	0	0	0	0	0	0
Required hours	2160.00	2184.00	2208.00	2208.00	2160.00	2184.00	2208.00	2208.00
Train 3								
Planned unavailable hours	0	0	0	0	0	2.40	0	0.60
Unplanned unavailable hours	2.00	0	0	0	0	25.00	6.80	0
Fault exposure hours	0	0	0	0	0	0	0	0
Effective Reset hours	0	0	0	0	0	0	0	0
Required hours	2160.00	2184.00	2208.00	2208.00	2160.00	2184.00	2208.00	8904.00
Train 4								
Planned unavailable hours	0	38.30	0	0	0.70	0	0	0.70
Unplanned unavailable hours	0	0	0	0	0.80	0	6.80	0
Fault exposure hours	0	0	0	0	0	0	0	0
Effective Reset hours	0	0	0	0	0	0	0	0
Required hours	2160.00	2184.00	2208.00	2208.00	2160.00	2184.00	2208.00	2208.00

Indicator value	0.6%	0.6%	0.6%	0.5%	0.5%	0.5%	0.5%	0.4%

Licensee Comments: none

Safety System Unavailability, High Pressure Injection System (HPCI)



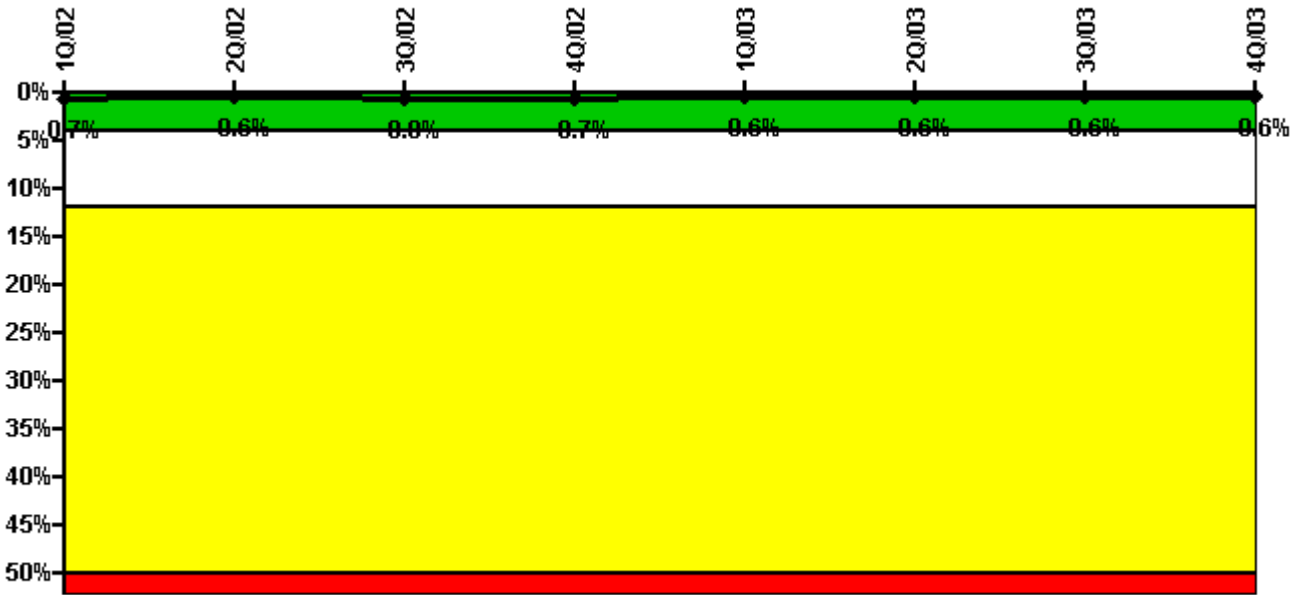
Thresholds: White > 4.0% Yellow > 12.0% Red > 50.0%

Notes

Safety System Unavailability, High Pressure Injection System (HPCI)	1Q/02	2Q/02	3Q/02	4Q/02	1Q/03	2Q/03	3Q/03	4Q/03
Train 1								
Planned unavailable hours	0	27.38	42.42	1.53	1.47	1.25	2.00	48.73
Unplanned unavailable hours	0	0	0	0	0	0	260.00	0
Fault exposure hours	0	0	0	0	0	0	0	0
Effective Reset hours	0	0	0	0	0	0	0	0
Required hours	1450.87	1701.50	2208.00	2208.00	2160.00	2184.00	2121.00	2208.00
Indicator value	0.5%	0.6%	0.7%	0.7%	0.7%	0.6%	1.6%	1.8%

Licensee Comments: none

Safety System Unavailability, Heat Removal System (RCIC)



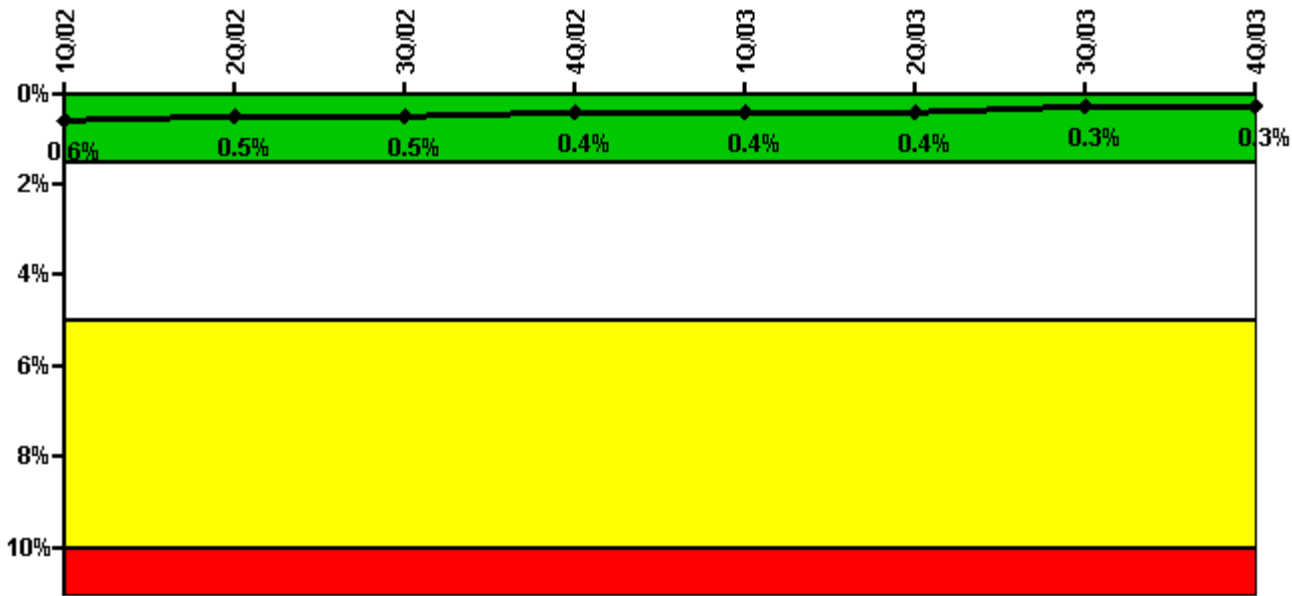
Thresholds: White > 4.0% Yellow > 12.0% Red > 50.0%

Notes

Safety System Unavailability, Heat Removal System (RCIC)	1Q/02	2Q/02	3Q/02	4Q/02	1Q/03	2Q/03	3Q/03	4Q/03
Train 1								
Planned unavailable hours	20.40	1.00	53.58	33.92	0.50	0.50	0.50	23.08
Unplanned unavailable hours	0	0	0	0	0	0	0	0
Fault exposure hours	0	0	0	0	0	0	0	0
Effective Reset hours	0	0	0	0	0	0	0	0
Required hours	1450.87	1701.50	2208.00	2208.00	2160.00	2184.00	2121.50	2208.00
Indicator value	0.7%	0.6%	0.8%	0.7%	0.6%	0.6%	0.6%	0.6%

Licensee Comments: none

Safety System Unavailability, Residual Heat Removal System



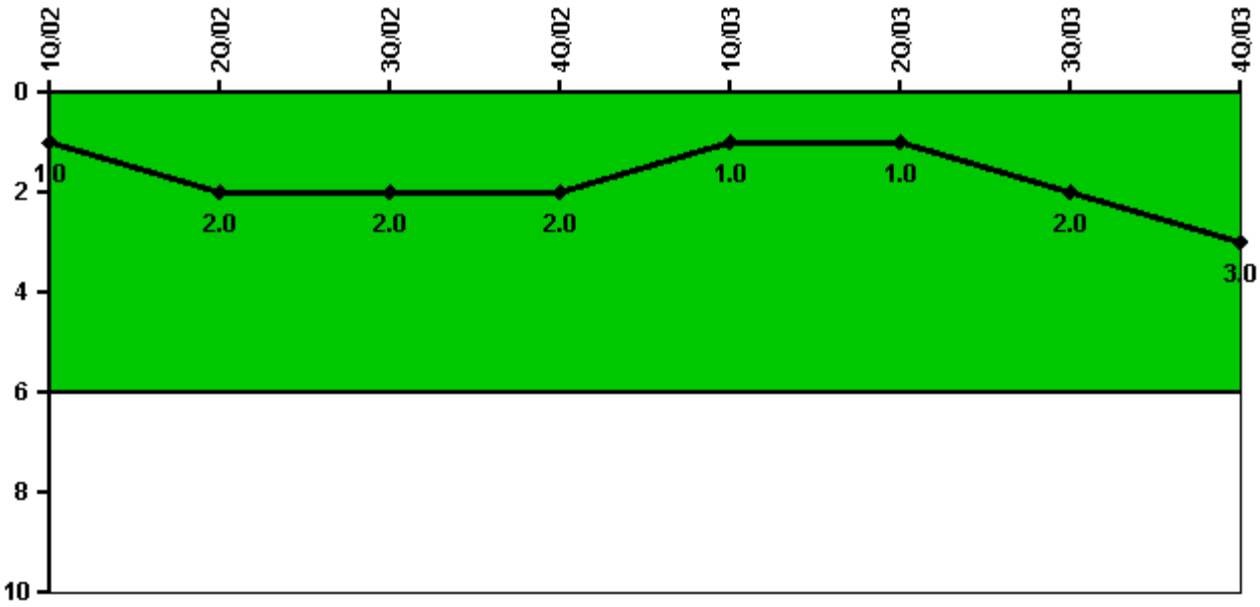
Thresholds: White > 1.5% Yellow > 5.0% Red > 10.0%

Notes

Safety System Unavailability, Residual Heat Removal System	1Q/02	2Q/02	3Q/02	4Q/02	1Q/03	2Q/03	3Q/03	4Q/03
Train 1								
Planned unavailable hours	22.88	6.03	5.38	8.40	0	10.36	0	34.33
Unplanned unavailable hours	0	0	0	0	5.00	0	0	0
Fault exposure hours	0	0	0	0	0	0	0	0
Effective Reset hours	0	0	0	0	0	0	0	0
Required hours	2160.00	2184.00	2208.00	2208.00	2160.00	2184.00	2208.00	2208.00
Train 2								
Planned unavailable hours	0	9.38	11.70	9.20	0	0	0	7.33
Unplanned unavailable hours	0	0	0	0	0	0	0	0
Fault exposure hours	0	0	0	0	0	0	0	0
Effective Reset hours	0	0	0	0	0	0	0	0
Required hours	2160.00	2184.00	2208.00	2208.00	2160.00	2184.00	2208.00	2208.00
Indicator value	0.6%	0.5%	0.5%	0.4%	0.4%	0.4%	0.3%	0.3%

Licensee Comments: none

Safety System Functional Failures (BWR)



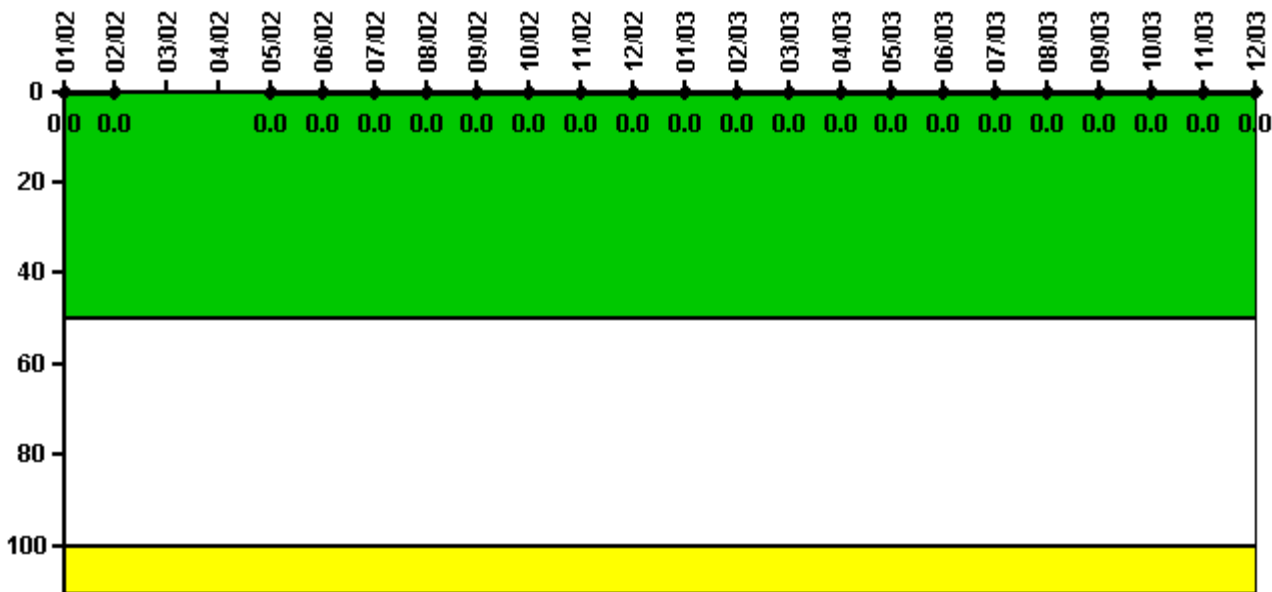
Thresholds: White > 6.0

Notes

Safety System Functional Failures (BWR)	1Q/02	2Q/02	3Q/02	4Q/02	1Q/03	2Q/03	3Q/03	4Q/03
Safety System Functional Failures	1	1	0	0	0	1	1	1
Indicator value	1	2	2	2	1	1	2	3

Licensee Comments: none

Reactor Coolant System Activity



Thresholds: White > 50.0 Yellow > 100.0

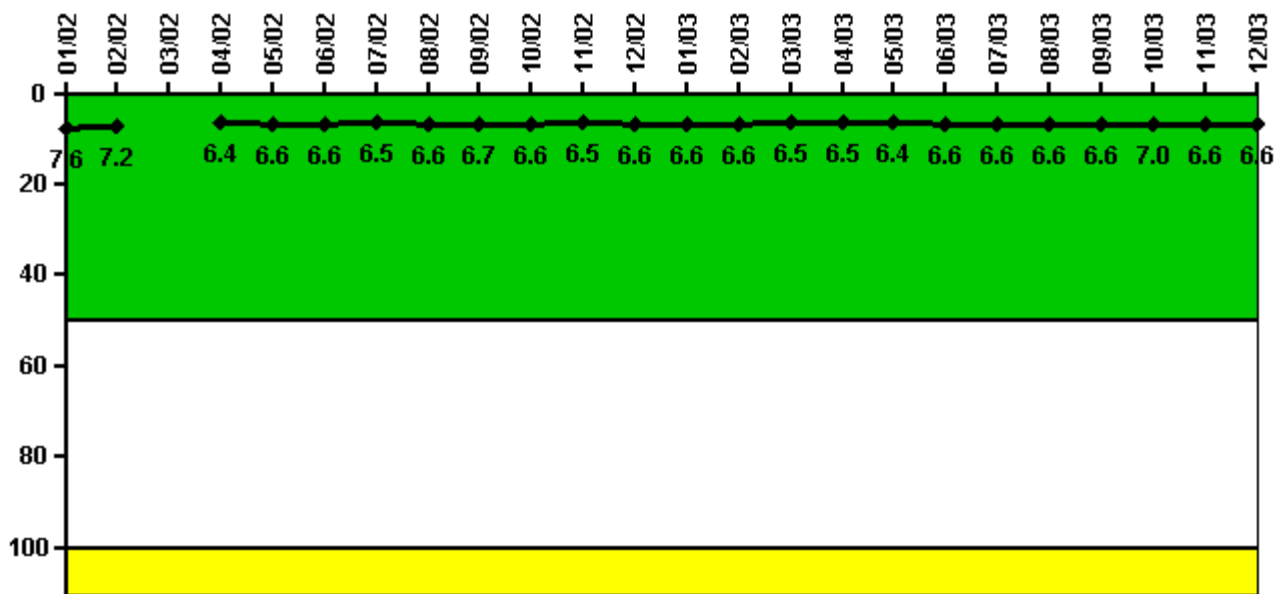
Notes

Reactor Coolant System Activity	1/02	2/02	3/02	4/02	5/02	6/02	7/02	8/02	9/02	10/02	11/02	12/02
Maximum activity	0.000015	0.000007	N/A	N/A	0.000002	0.000004	0.000002	0.000004	0.000003	0.000004	0.000004	0.000004
Technical specification limit	0.2	0.2	0.2	0.2	0.2	0.2	0.2	0.2	0.2	0.2	0.2	0.2
Indicator value	0	0	N/A	N/A	0	0	0	0	0	0	0	0

Reactor Coolant System Activity	1/03	2/03	3/03	4/03	5/03	6/03	7/03	8/03	9/03	10/03	11/03	12/03
Maximum activity	0.000005	0.000003	0.000004	0.000003	0.000004	0.000005	0.000004	0.000003	0.000003	0.000005	0.000007	0.000005
Technical specification limit	0.2	0.2	0.2	0.2	0.2	0.2	0.2	0.2	0.2	0.2	0.2	0.2
Indicator value	0	0	0	0	0	0	0	0	0	0	0	0

Licensee Comments: none

Reactor Coolant System Leakage



Thresholds: White > 50.0 Yellow > 100.0

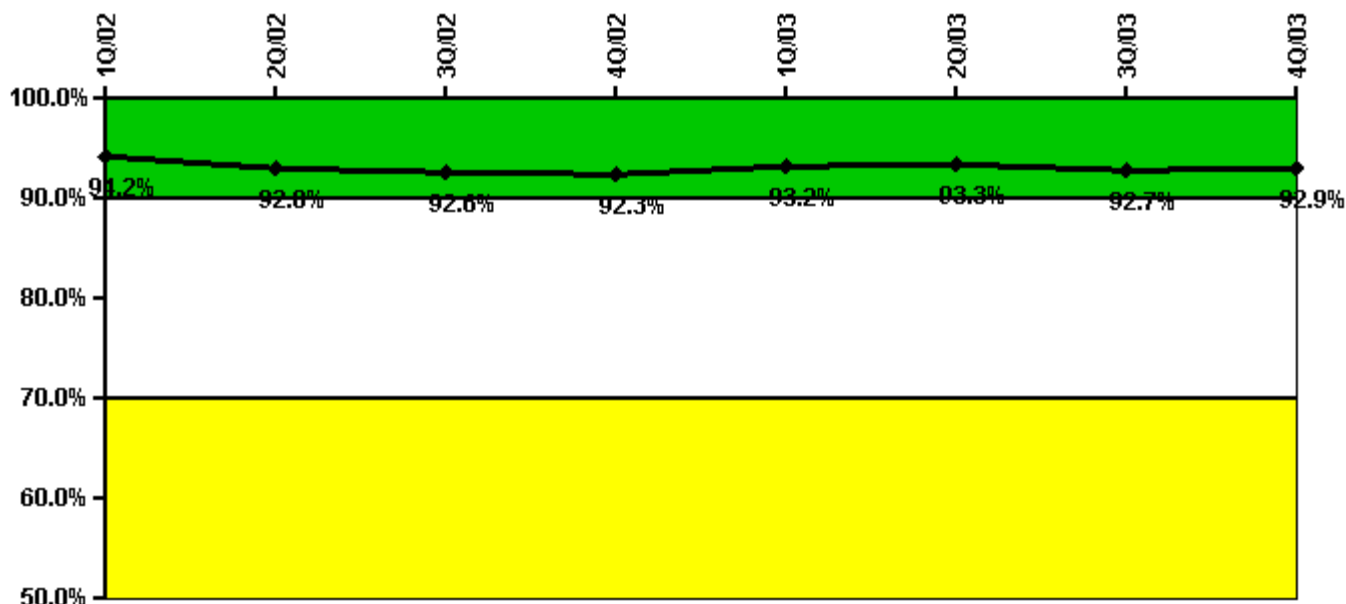
Notes

Reactor Coolant System Leakage	1/02	2/02	3/02	4/02	5/02	6/02	7/02	8/02	9/02	10/02	11/02	12/02
Maximum leakage	1.890	1.810	N/A	1.600	1.640	1.660	1.630	1.650	1.680	1.660	1.630	1.640
Technical specification limit	25.0	25.0	25.0	25.0	25.0	25.0	25.0	25.0	25.0	25.0	25.0	25.0
Indicator value	7.6	7.2	N/A	6.4	6.6	6.6	6.5	6.6	6.7	6.6	6.5	6.6

Reactor Coolant System Leakage	1/03	2/03	3/03	4/03	5/03	6/03	7/03	8/03	9/03	10/03	11/03	12/03
Maximum leakage	1.640	1.640	1.620	1.630	1.600	1.650	1.650	1.660	1.650	1.750	1.640	1.640
Technical specification limit	25.0	25.0	25.0	25.0	25.0	25.0	25.0	25.0	25.0	25.0	25.0	25.0
Indicator value	6.6	6.6	6.5	6.5	6.4	6.6	6.6	6.6	6.6	7.0	6.6	6.6

Licensee Comments: none

Drill/Exercise Performance



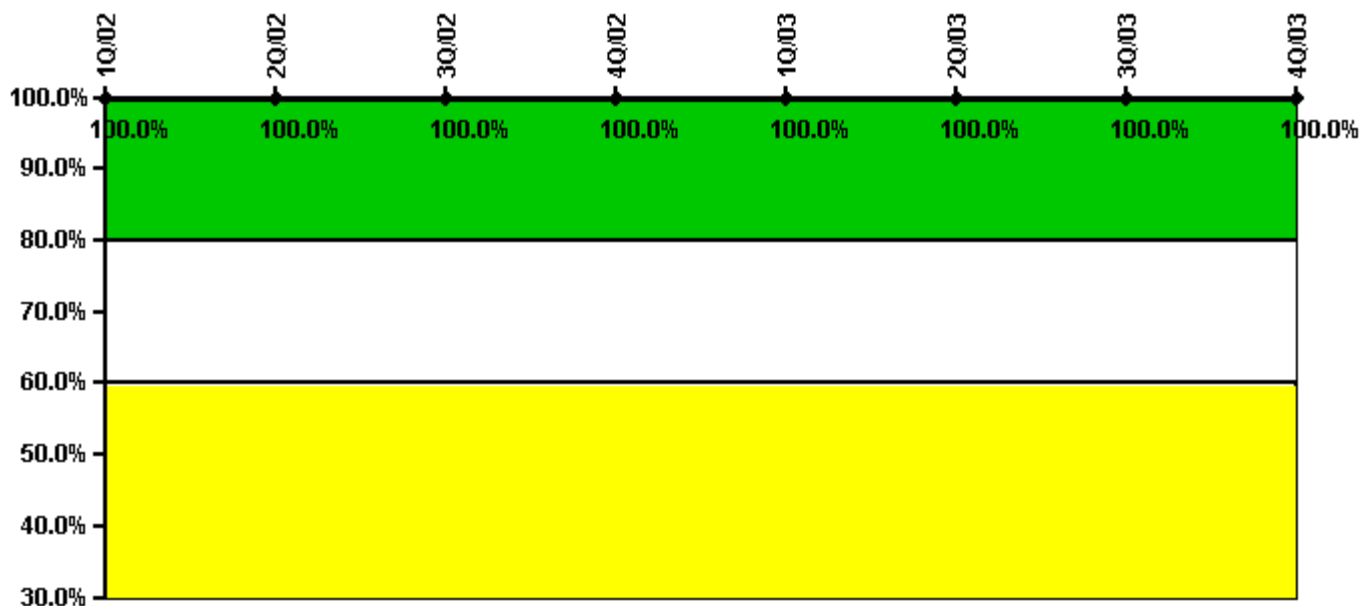
Thresholds: White < 90.0% Yellow < 70.0%

Notes

Drill/Exercise Performance	1Q/02	2Q/02	3Q/02	4Q/02	1Q/03	2Q/03	3Q/03	4Q/03
Successful opportunities	0	6.0	10.0	10.0	34.0	15.0	19.0	10.0
Total opportunities	0	10.0	10.0	10.0	35.0	16.0	21.0	10.0
Indicator value	94.2%	92.8%	92.6%	92.3%	93.2%	93.3%	92.7%	92.9%

Licensee Comments: none

ERO Drill Participation



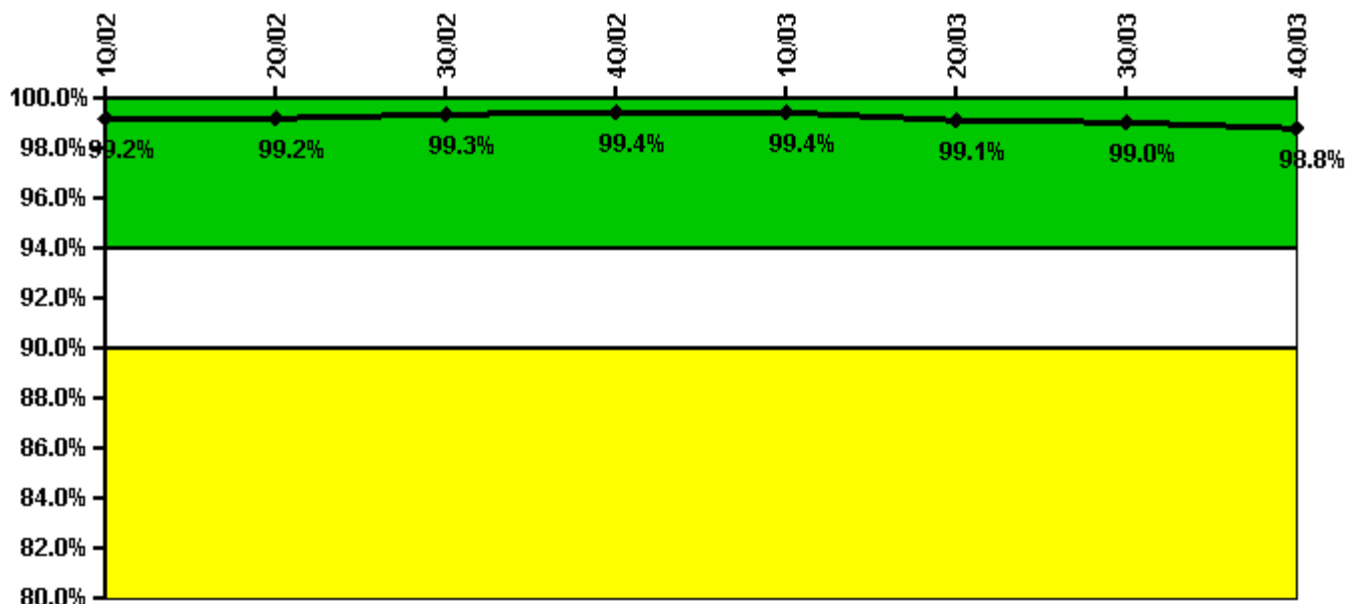
Thresholds: White < 80.0% Yellow < 60.0%

Notes

ERO Drill Participation	1Q/02	2Q/02	3Q/02	4Q/02	1Q/03	2Q/03	3Q/03	4Q/03
Participating Key personnel	121.0	120.0	116.0	112.0	118.0	71.0	73.0	71.0
Total Key personnel	121.0	120.0	116.0	112.0	118.0	71.0	73.0	71.0
Indicator value	100.0%	100.0%	100.0%	100.0%	100.0%	100.0%	100.0%	100.0%

Licensee Comments: none

Alert & Notification System



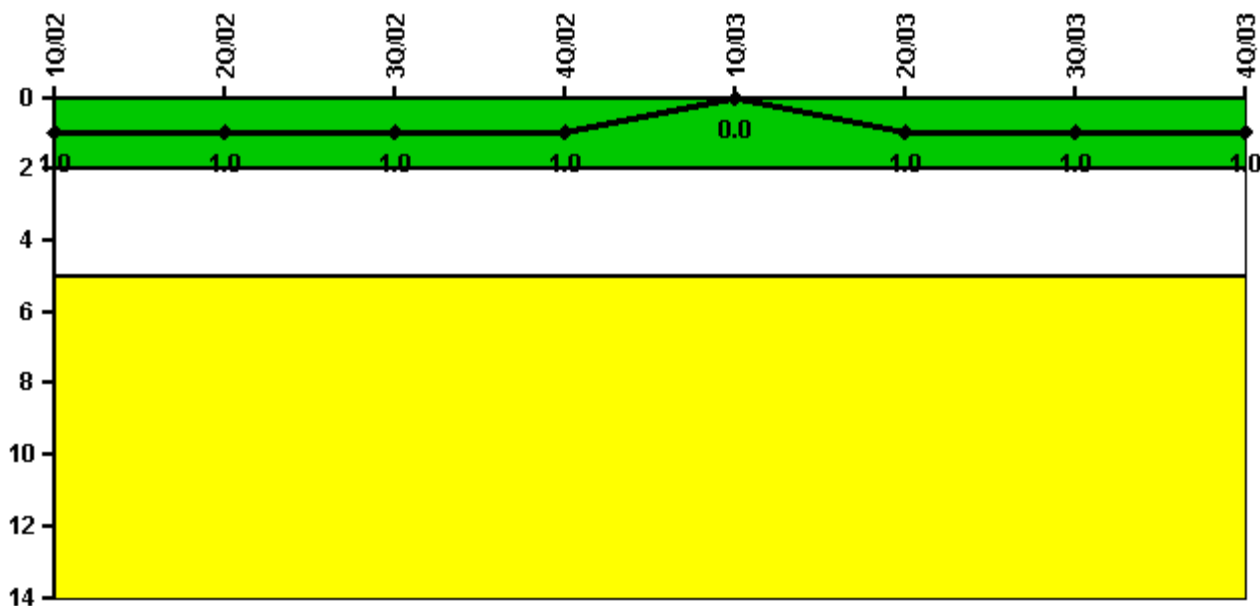
Thresholds: White < 94.0% Yellow < 90.0%

Notes

Alert & Notification System	1Q/02	2Q/02	3Q/02	4Q/02	1Q/03	2Q/03	3Q/03	4Q/03
Successful siren-tests	782	889	780	889	781	990	888	773
Total sirens-tests	784	896	784	896	784	1008	896	784
Indicator value	99.2%	99.2%	99.3%	99.4%	99.4%	99.1%	99.0%	98.8%

Licensee Comments: none

Occupational Exposure Control Effectiveness



Thresholds: White > 2.0 Yellow > 5.0

Notes

Occupational Exposure Control Effectiveness	1Q/02	2Q/02	3Q/02	4Q/02	1Q/03	2Q/03	3Q/03	4Q/03
High radiation area occurrences	1	0	0	0	0	1	0	0
Very high radiation area occurrences	0	0	0	0	0	0	0	0
Unintended exposure occurrences	0	0	0	0	0	0	0	0
Indicator value	1	1	1	1	0	1	1	1

Licensee Comments: none

RETS/ODCM Radiological Effluent



Thresholds: White > 1.0 Yellow > 3.0

Notes

RETS/ODCM Radiological Effluent	1Q/02	2Q/02	3Q/02	4Q/02	1Q/03	2Q/03	3Q/03	4Q/03
RETS/ODCM occurrences	0	0	0	0	0	0	0	0
Indicator value	0	0	0	0	0	0	0	0

Licensee Comments: none

Protected Area Security Performance Index



Thresholds: White > 0.080

Notes

Protected Area Security Performance Index	1Q/02	2Q/02	3Q/02	4Q/02	1Q/03	2Q/03	3Q/03	4Q/03
IDS compensatory hours	21.00	1.10	16.70	62.50	19.10	0	12.30	62.70
CCTV compensatory hours	0	0	0	0	0	0	0	0
IDS normalization factor	2.30	2.30	2.30	2.30	2.30	2.30	2.30	2.30
CCTV normalization factor	1.7	1.7	1.7	1.7	1.7	1.7	1.7	1.7
Index Value	0.003	0.003	0.001	0.003	0.002	0.002	0.002	0.002

Licensee Comments:

4Q/03: The third quarter 2003 Protected Area Security Equipment Performance Indicator data is revised from 108 hours to 1.8 hours due to a typographical error on the input data sheet. This revision does not affect the color of the Performance Indicator.

Personnel Screening Program



Thresholds: White > 2.0 Yellow > 5.0

Notes

Personnel Screening Program	1Q/02	2Q/02	3Q/02	4Q/02	1Q/03	2Q/03	3Q/03	4Q/03
Program failures	0	0	0	0	0	0	0	0
Indicator value	0	0	0	0	0	0	0	0

Licensee Comments: none

FFD/Personnel Reliability



Thresholds: White > 2.0 Yellow > 5.0

Notes

FFD/Personnel Reliability	1Q/02	2Q/02	3Q/02	4Q/02	1Q/03	2Q/03	3Q/03	4Q/03
Program Failures	0	0	0	0	0	0	0	0
Indicator value	0	0	0	0	0	0	0	0

Licensee Comments: none

▲ [PI Summary](#) | [Inspection Findings Summary](#) | [Reactor Oversight Process](#)

Last Modified: January 23, 2004