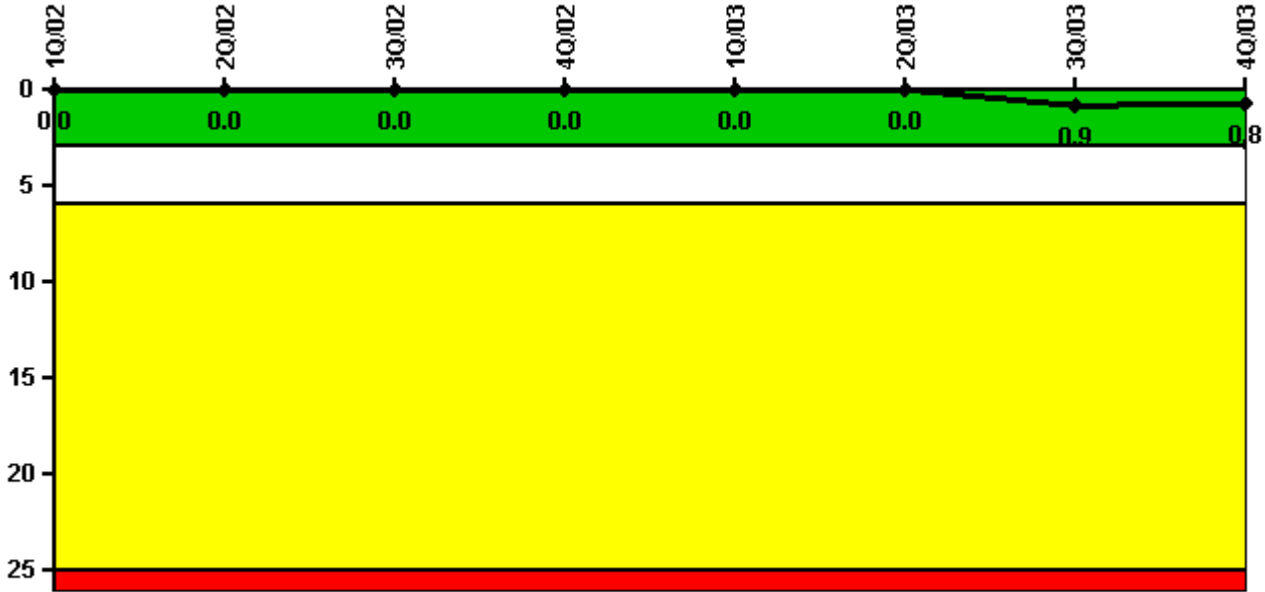


Point Beach 1

4Q/2003 Performance Indicators

Licensee's General Comments: none

Unplanned Scrams per 7000 Critical Hrs



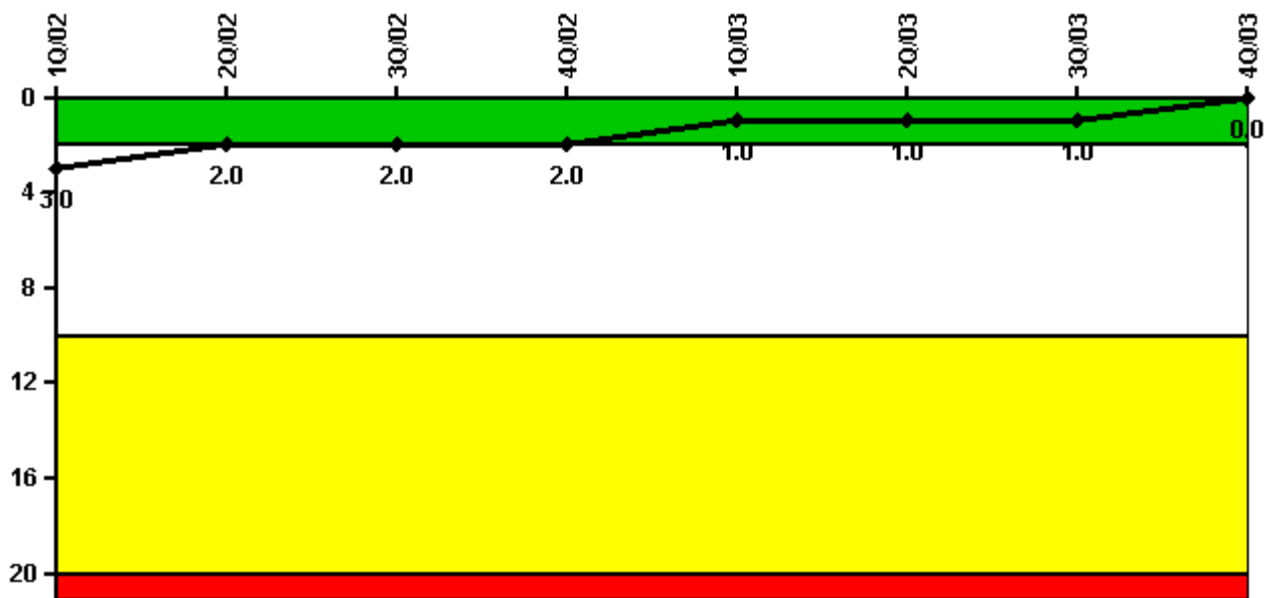
Thresholds: White > 3.0 Yellow > 6.0 Red > 25.0

Notes

Unplanned Scrams per 7000 Critical Hrs	1Q/02	2Q/02	3Q/02	4Q/02	1Q/03	2Q/03	3Q/03	4Q/03
Unplanned scrams	0	0	0	0	0	0	1.0	0
Critical hours	2160.0	2183.0	1802.5	1844.1	2160.0	2183.0	1994.5	2209.0
Indicator value	0	0	0	0	0	0	0.9	0.8

Licensee Comments: none

Scrams with Loss of Normal Heat Removal



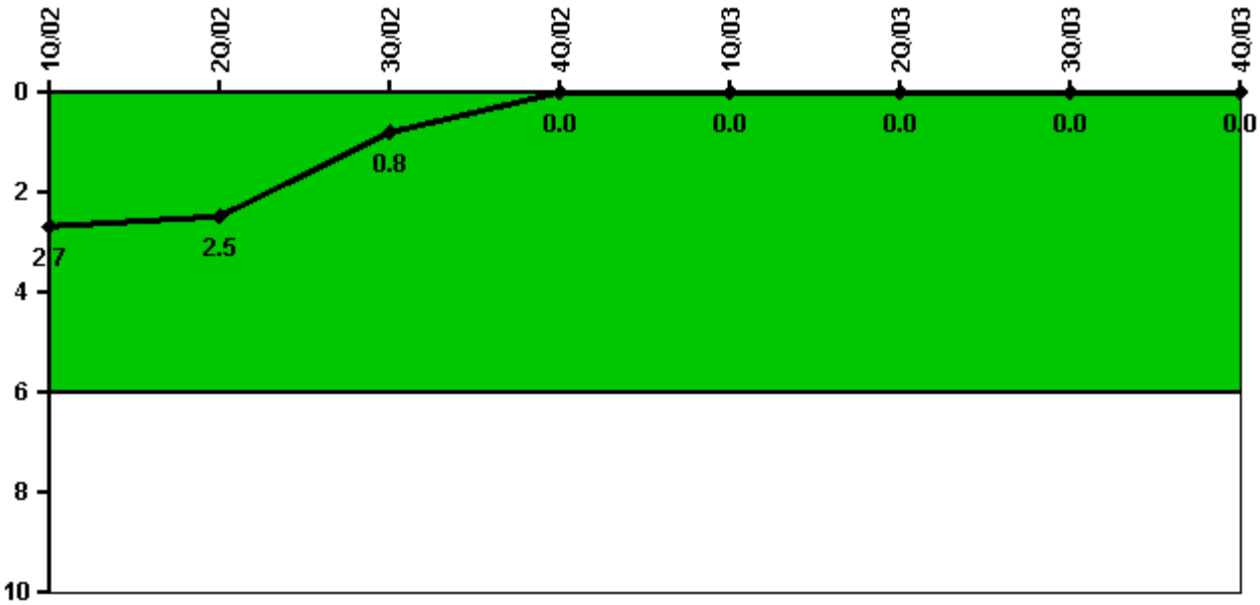
Thresholds: White > 2.0 Yellow > 10.0 Red > 20.0

Notes

Scrams with Loss of Normal Heat Removal	1Q/02	2Q/02	3Q/02	4Q/02	1Q/03	2Q/03	3Q/03	4Q/03
Scrams	0	0	0	0	0	0	0	0
Indicator value	3.0	2.0	2.0	2.0	1.0	1.0	1.0	0

Licensee Comments: none

Unplanned Power Changes per 7000 Critical Hrs



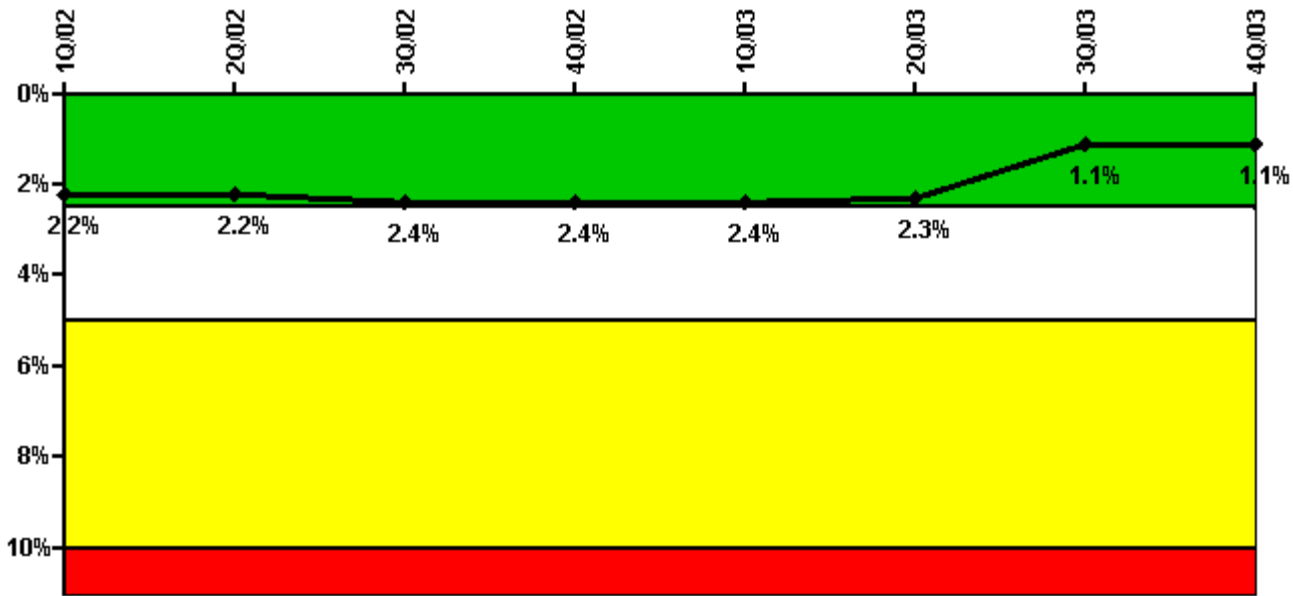
Thresholds: White > 6.0

Notes

Unplanned Power Changes per 7000 Critical Hrs	1Q/02	2Q/02	3Q/02	4Q/02	1Q/03	2Q/03	3Q/03	4Q/03
Unplanned power changes	0	0	0	0	0	0	0	0
Critical hours	2160.0	2183.0	1802.5	1844.1	2160.0	2183.0	1994.5	2209.0
Indicator value	2.7	2.5	0.8	0	0	0	0	0

Licensee Comments: none

Safety System Unavailability, Emergency AC Power



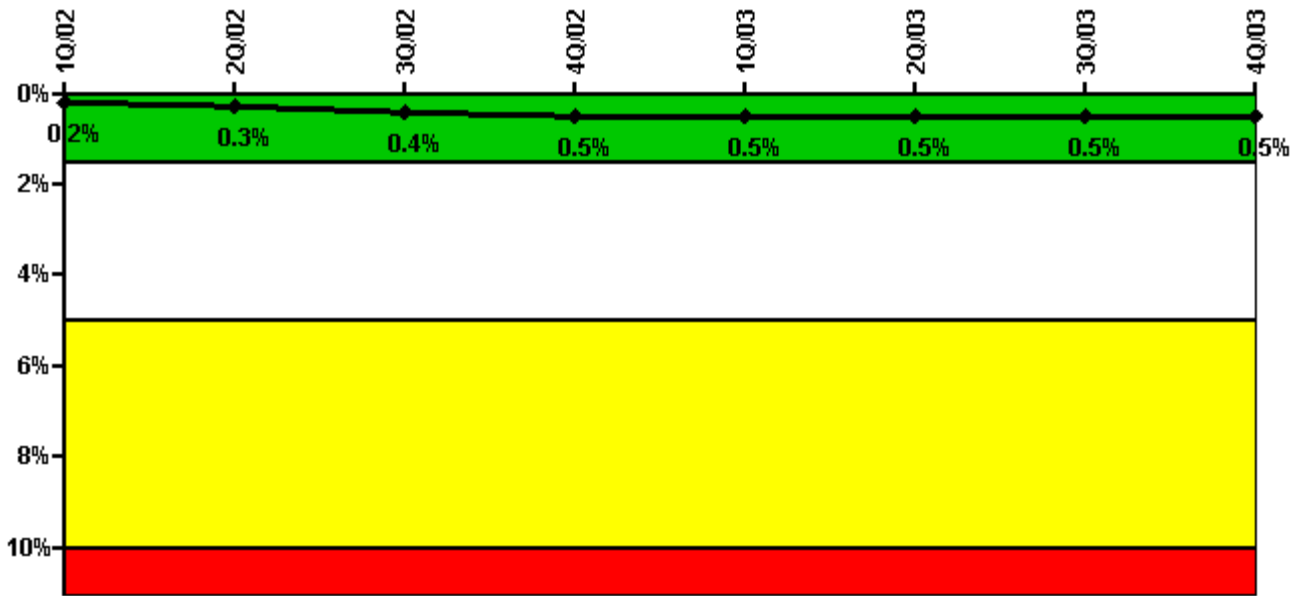
Thresholds: White > 2.5% Yellow > 5.0% Red > 10.0%

Notes

Safety System Unavailability, Emergency AC Power	1Q/02	2Q/02	3Q/02	4Q/02	1Q/03	2Q/03	3Q/03	4Q/03
Train 1								
Planned unavailable hours	18.39	27.53	27.12	17.15	12.65	12.13	14.73	53.80
Unplanned unavailable hours	0	2.60	2.12	0	0	0	3.20	0
Fault exposure hours	0	0	0	0	0	0	0	0
Effective Reset hours	0	0	0	0	0	0	0	0
Required hours	2160.00	2183.00	2208.00	2209.00	2160.00	2183.00	2208.00	2209.00
Train 2								
Planned unavailable hours	13.76	16.02	68.57	10.97	17.97	10.90	23.93	17.27
Unplanned unavailable hours	1.98	0	2.20	0	0	0	1.48	0
Fault exposure hours	0	0	0	0	0	0	0	0
Effective Reset hours	0	0	0	0	0	0	0	0
Required hours	2160.00	2183.00	2208.00	2209.00	2160.00	2183.00	2208.00	2209.00
Indicator value	2.2%	2.2%	2.4%	2.4%	2.4%	2.3%	1.1%	1.1%

Licensee Comments: none

Safety System Unavailability, High Pressure Injection System (HPSI)



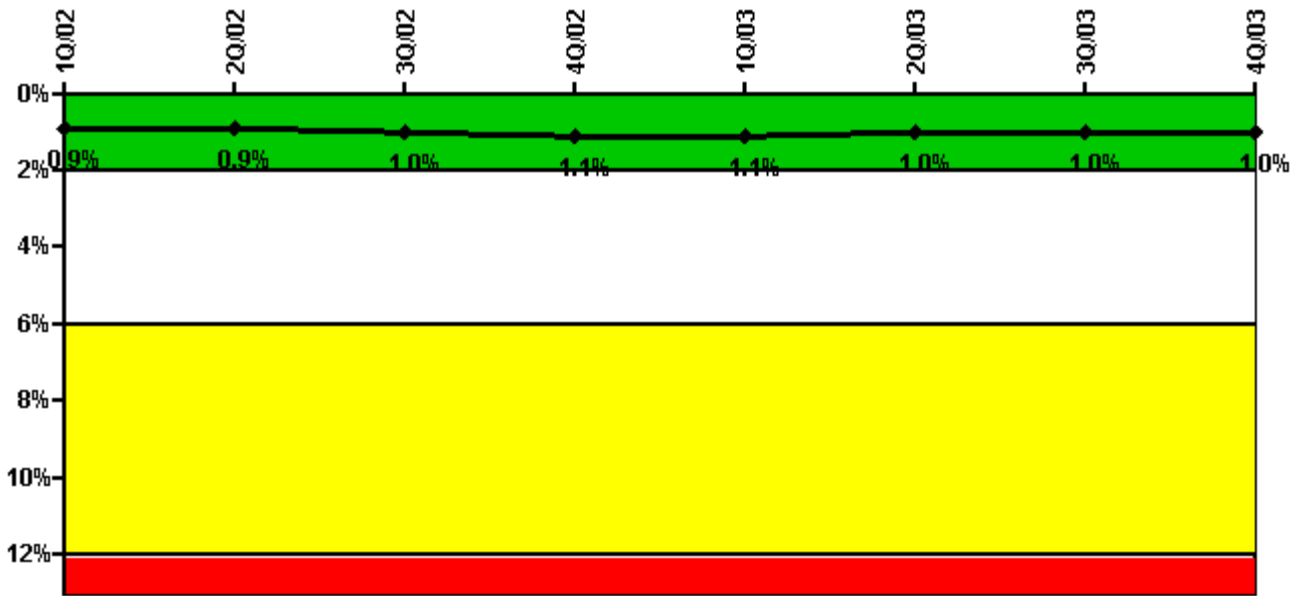
Thresholds: White > 1.5% Yellow > 5.0% Red > 10.0%

Notes

Safety System Unavailability, High Pressure Injection System (HPSI)	1Q/02	2Q/02	3Q/02	4Q/02	1Q/03	2Q/03	3Q/03	4Q/03
Train 1								
Planned unavailable hours	9.91	24.65	11.33	26.67	6.37	2.07	1.70	2.23
Unplanned unavailable hours	0	0	0	0	0	0	0	0
Fault exposure hours	0	0	0	0	0	0	0	0
Effective Reset hours	0	0	0	0	0	0	0	0
Required hours	2160.00	2183.00	1812.30	1910.00	2160.00	2183.00	2208.00	2209.00
Train 2								
Planned unavailable hours	11.27	24.08	13.17	19.38	16.74	3.41	0.57	2.20
Unplanned unavailable hours	0	0	0	0	0	0	0	0
Fault exposure hours	0	0	0	0	0	0	0	0
Effective Reset hours	0	0	0	0	0	0	0	0
Required hours	2160.00	2183.00	1812.30	1910.00	2160.00	2183.00	2208.00	2209.00
Indicator value	0.2%	0.3%	0.4%	0.5%	0.5%	0.5%	0.5%	0.5%

Licensee Comments: none

Safety System Unavailability, Heat Removal System (AFW)



Thresholds: White > 2.0% Yellow > 6.0% Red > 12.0%

Notes

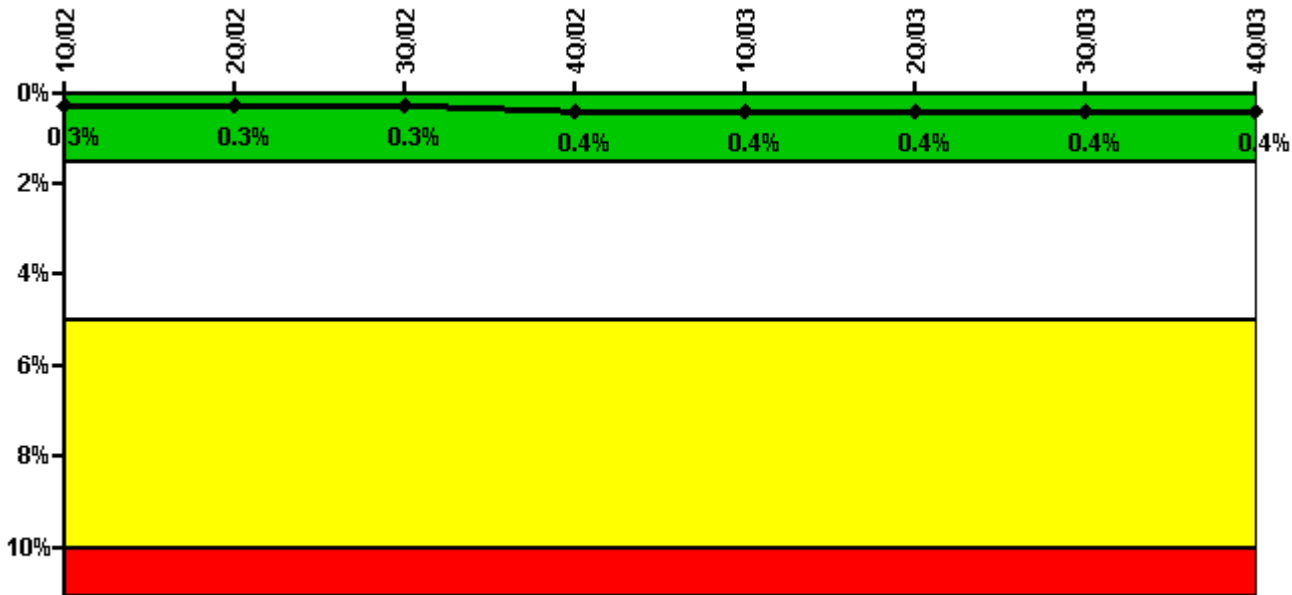
Safety System Unavailability, Heat Removal System (AFW)	1Q/02	2Q/02	3Q/02	4Q/02	1Q/03	2Q/03	3Q/03	4Q/03
Train 1								
Planned unavailable hours	25.46	8.11	25.91	20.06	29.48	6.01	6.75	27.07
Unplanned unavailable hours	0	0	0	2.63	0	0	0.20	16.15
Fault exposure hours	0	0	0	0	0	0	0	0
Effective Reset hours	0	0	0	0	0	0	0	0
Required hours	2160.00	2183.00	1812.32	1910.00	2160.00	2183.00	2208.00	2209.00
Train 2								
Planned unavailable hours	12.90	12.80	3.73	43.19	30.23	6.41	14.48	43.69
Unplanned unavailable hours	0	0	0	2.63	0	0	0	0
Fault exposure hours	0	0	0	0	0	0	0	0
Effective Reset hours	0	0	0	0	0	0	0	0
Required hours	2160.00	2183.00	1812.32	1910.00	2160.00	2183.00	2208.00	2209.00
Train 3								
Planned unavailable hours	13.95	63.72	2.37	36.08	22.25	5.70	21.08	59.55
Unplanned unavailable hours	8.47	0	0	2.63	0	0	0	0
Fault exposure hours	0	0	0	0	0	0	0	0
Effective Reset hours	0	0	0	0	0	0	0	0
Required hours	2160.00	2183.00	1812.32	1910.00	2160.00	2183.00	2208.00	2209.00
Indicator value	0.9%	0.9%	1.0%	1.1%	1.1%	1.0%	1.0%	1.0%

Licensee Comments:

4Q/03: An engineering evaluation is pending concerning material qualification of a piece part installed in a motor

operated valve, and the effect it may have had on train availability. Evaluation will be complete for the next quarterly report, in accordance with NEI 99-02, page 24, lines 20-26.

Safety System Unavailability, Residual Heat Removal System



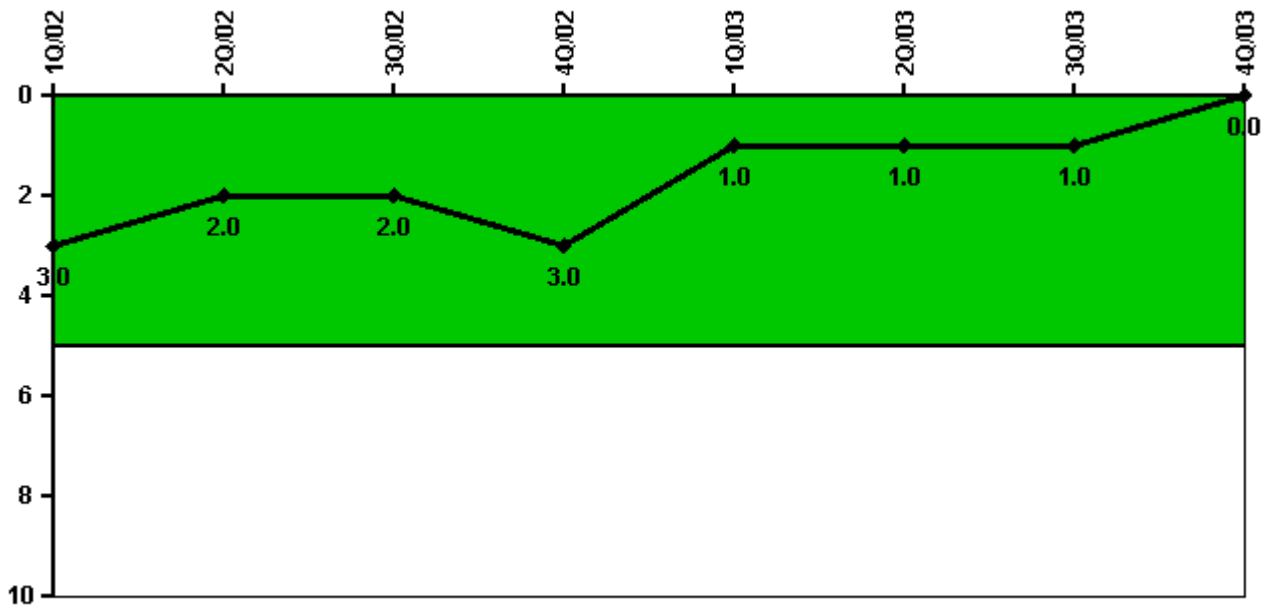
Thresholds: White > 1.5% Yellow > 5.0% Red > 10.0%

Notes

Safety System Unavailability, Residual Heat Removal System	1Q/02	2Q/02	3Q/02	4Q/02	1Q/03	2Q/03	3Q/03	4Q/03
Train 1								
Planned unavailable hours	27.93	0.85	20.64	13.61	1.45	0.45	9.93	5.41
Unplanned unavailable hours	0	0	0	0	0	0	0	0
Fault exposure hours	0	0	0	0	0	0	0	0
Effective Reset hours	0	0	0	0	0	0	0	0
Required hours	2160.00	2183.00	2140.70	2209.00	2160.00	2183.00	2208.00	2209.00
Train 2								
Planned unavailable hours	0.45	0.57	14.33	1.83	1.46	1.08	1.50	14.53
Unplanned unavailable hours	0	0	0	0	0	0	0	0
Fault exposure hours	0	0	0	0	0	0	0	0
Effective Reset hours	0	0	0	0	0	0	0	0
Required hours	2160.00	2183.00	2140.70	2209.00	2160.00	2183.00	2208.00	2209.00
Indicator value	0.3%	0.3%	0.3%	0.4%	0.4%	0.4%	0.4%	0.4%

Licensee Comments: none

Safety System Functional Failures (PWR)



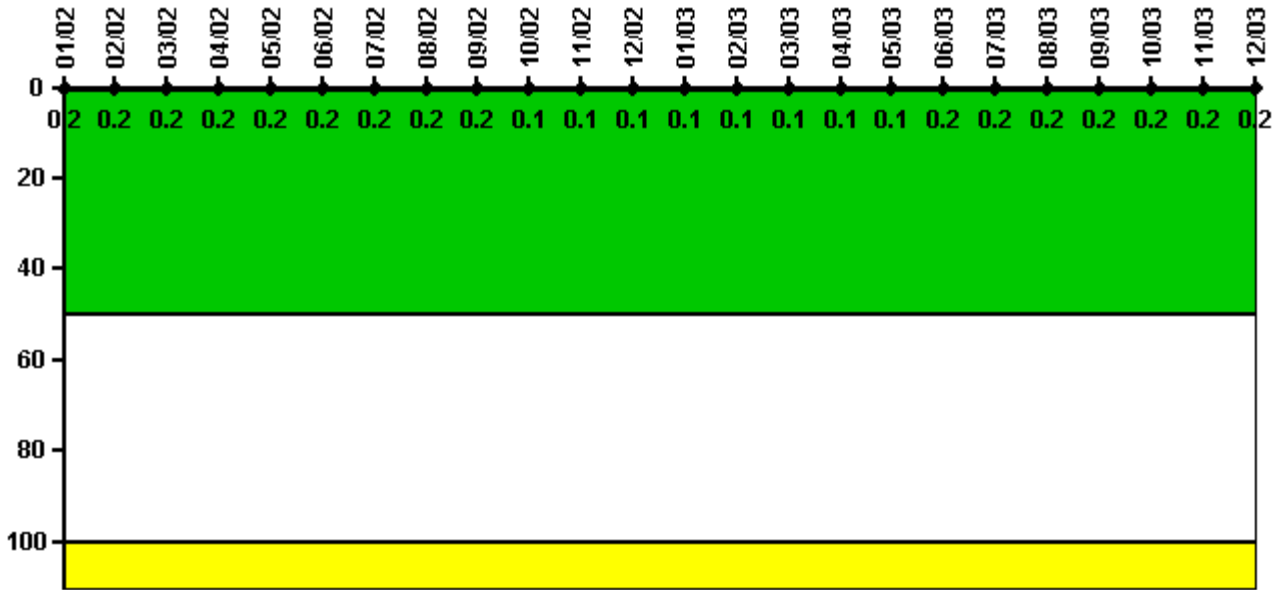
Thresholds: White > 5.0

Notes

Safety System Functional Failures (PWR)	1Q/02	2Q/02	3Q/02	4Q/02	1Q/03	2Q/03	3Q/03	4Q/03
Safety System Functional Failures	2	0	0	1	0	0	0	0
Indicator value	3	2	2	3	1	1	1	0

Licensee Comments: none

Reactor Coolant System Activity



Thresholds: White > 50.0 Yellow > 100.0

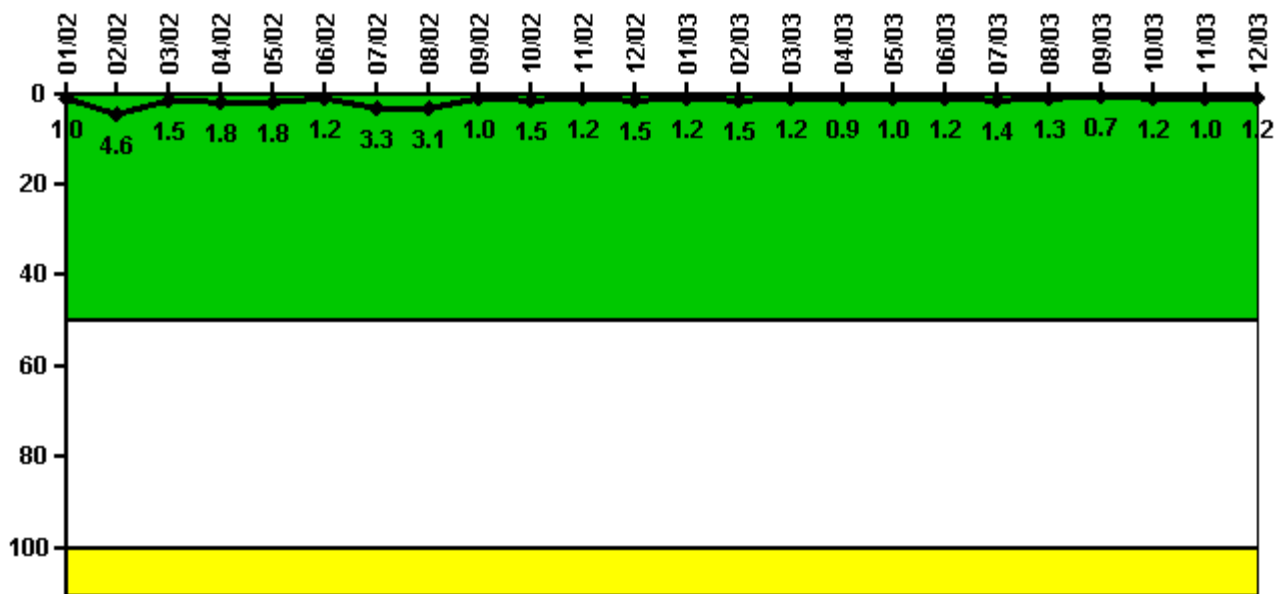
Notes

Reactor Coolant System Activity	1/02	2/02	3/02	4/02	5/02	6/02	7/02	8/02	9/02	10/02	11/02	12/02
Maximum activity	0.001530	0.001610	0.001650	0.001630	0.001720	0.001750	0.001780	0.001940	0.001820	0.000867	0.000945	0.000987
Technical specification limit	0.8	0.8	0.8	0.8	0.8	0.8	0.8	0.8	0.8	0.8	0.8	0.8
Indicator value	0.2	0.2	0.2	0.2	0.2	0.2	0.2	0.2	0.2	0.1	0.1	0.1

Reactor Coolant System Activity	1/03	2/03	3/03	4/03	5/03	6/03	7/03	8/03	9/03	10/03	11/03	12/03
Maximum activity	0.001030	0.001080	0.001080	0.001160	0.001190	0.001200	0.001250	0.001290	0.001350	0.001390	0.001400	0.001470
Technical specification limit	0.8	0.8	0.8	0.8	0.8	0.8	0.8	0.8	0.8	0.8	0.8	0.8
Indicator value	0.1	0.1	0.1	0.1	0.1	0.2	0.2	0.2	0.2	0.2	0.2	0.2

Licensee Comments: none

Reactor Coolant System Leakage



Thresholds: White > 50.0 Yellow > 100.0

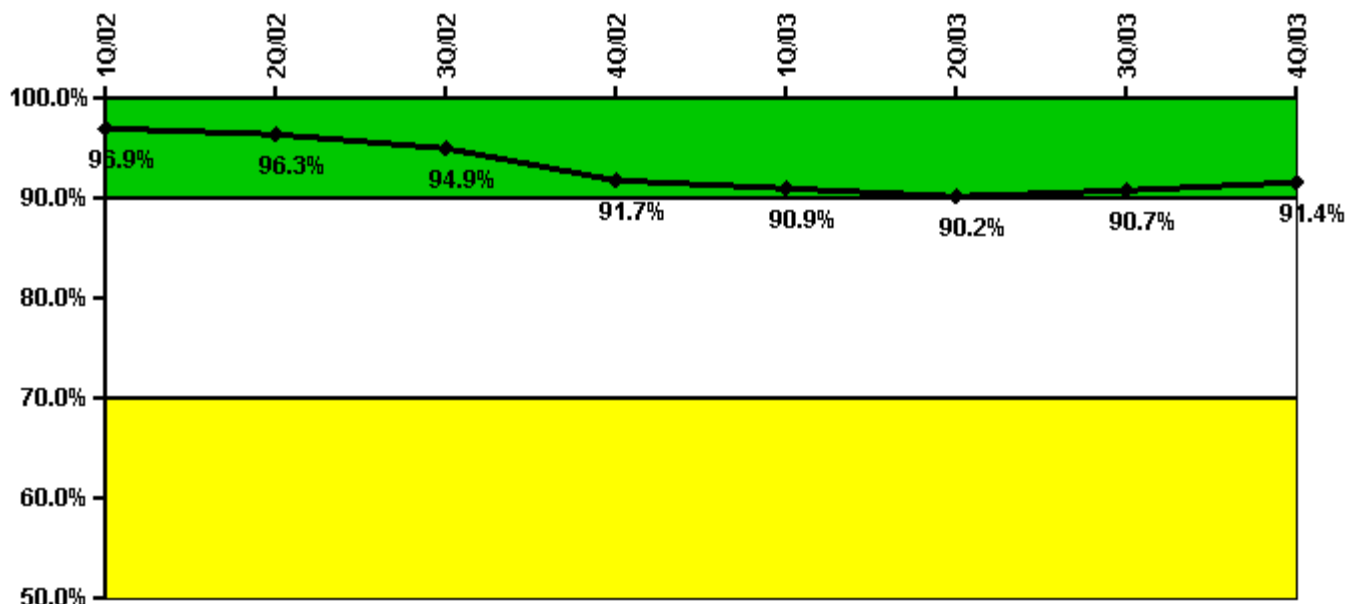
Notes

Reactor Coolant System Leakage	1/02	2/02	3/02	4/02	5/02	6/02	7/02	8/02	9/02	10/02	11/02	12/02
Maximum leakage	0.100	0.460	0.150	0.180	0.180	0.120	0.330	0.310	0.100	0.150	0.120	0.150
Technical specification limit	10.0	10.0	10.0	10.0	10.0	10.0	10.0	10.0	10.0	10.0	10.0	10.0
Indicator value	1.0	4.6	1.5	1.8	1.8	1.2	3.3	3.1	1.0	1.5	1.2	1.5

Reactor Coolant System Leakage	1/03	2/03	3/03	4/03	5/03	6/03	7/03	8/03	9/03	10/03	11/03	12/03
Maximum leakage	0.120	0.150	0.120	0.090	0.100	0.120	0.140	0.130	0.070	0.120	0.100	0.116
Technical specification limit	10.0	10.0	10.0	10.0	10.0	10.0	10.0	10.0	10.0	10.0	10.0	10.0
Indicator value	1.2	1.5	1.2	0.9	1.0	1.2	1.4	1.3	0.7	1.2	1.0	1.2

Licensee Comments: none

Drill/Exercise Performance



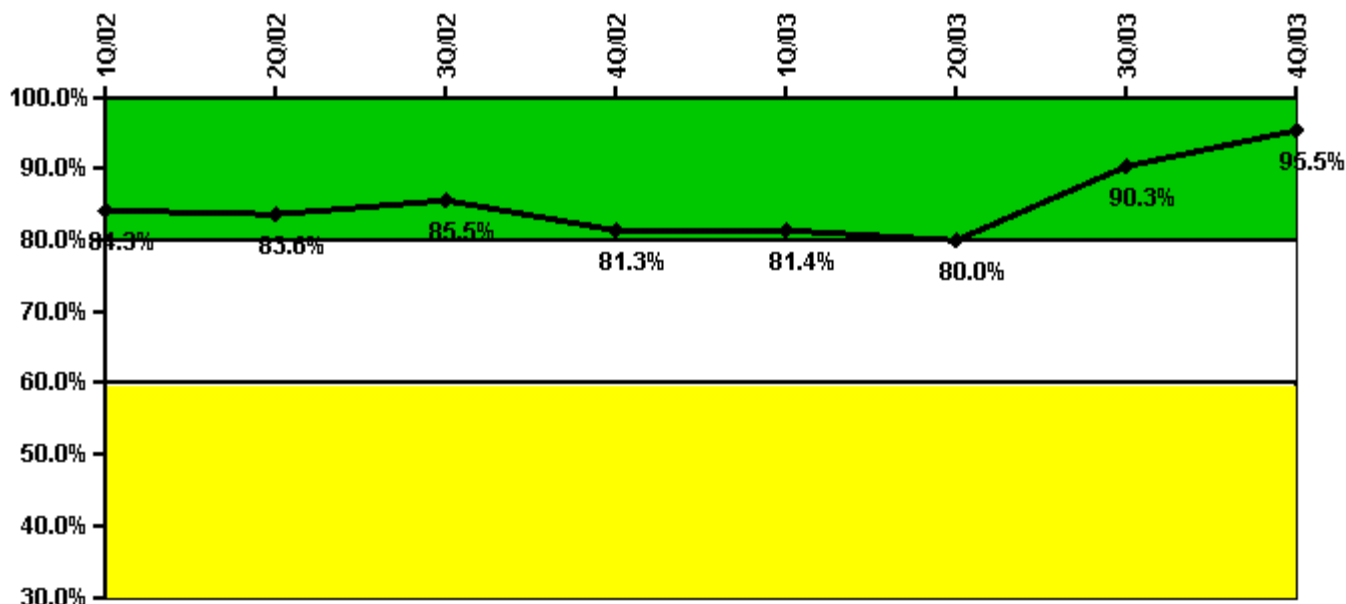
Thresholds: White < 90.0% Yellow < 70.0%

Notes

Drill/Exercise Performance	1Q/02	2Q/02	3Q/02	4Q/02	1Q/03	2Q/03	3Q/03	4Q/03
Successful opportunities	10.0	0	9.0	0	0	8.0	26.0	21.0
Total opportunities	12.0	0	10.0	0	0	9.0	28.0	22.0
Indicator value	96.9%	96.3%	94.9%	91.7%	90.9%	90.2%	90.7%	91.4%

Licensee Comments: none

ERO Drill Participation



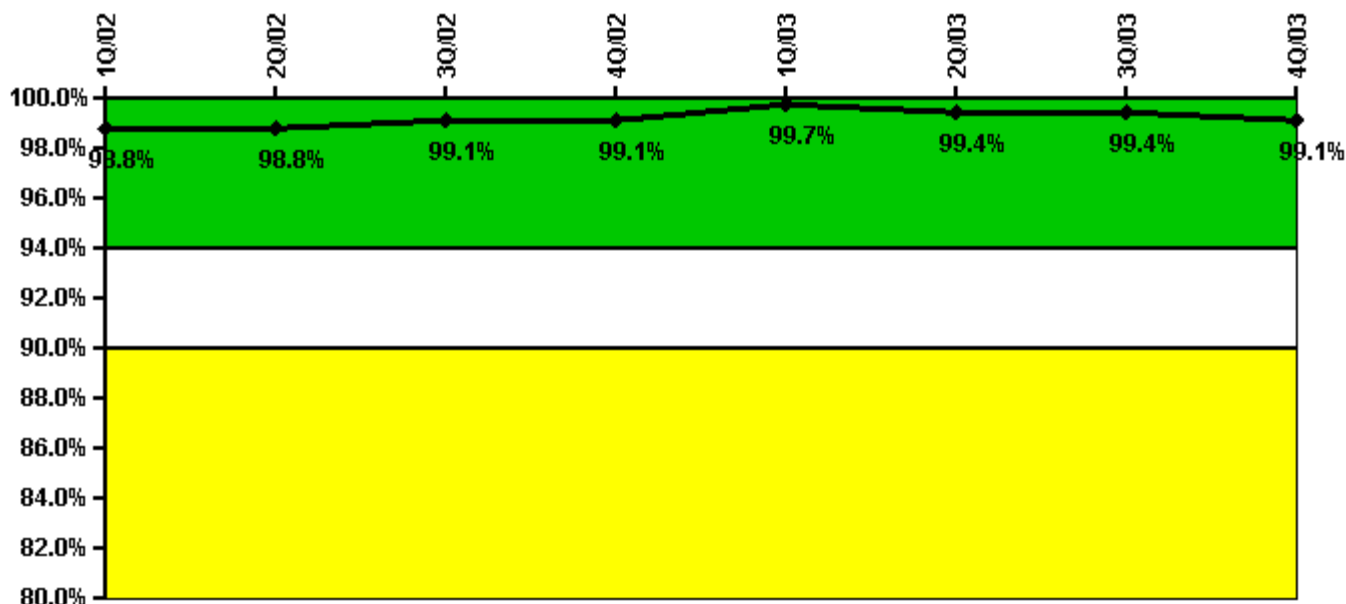
Thresholds: White < 80.0% Yellow < 60.0%

Notes

ERO Drill Participation	1Q/02	2Q/02	3Q/02	4Q/02	1Q/03	2Q/03	3Q/03	4Q/03
Participating Key personnel	59.0	56.0	53.0	52.0	48.0	48.0	56.0	63.0
Total Key personnel	70.0	67.0	62.0	64.0	59.0	60.0	62.0	66.0
Indicator value	84.3%	83.6%	85.5%	81.3%	81.4%	80.0%	90.3%	95.5%

Licensee Comments: none

Alert & Notification System



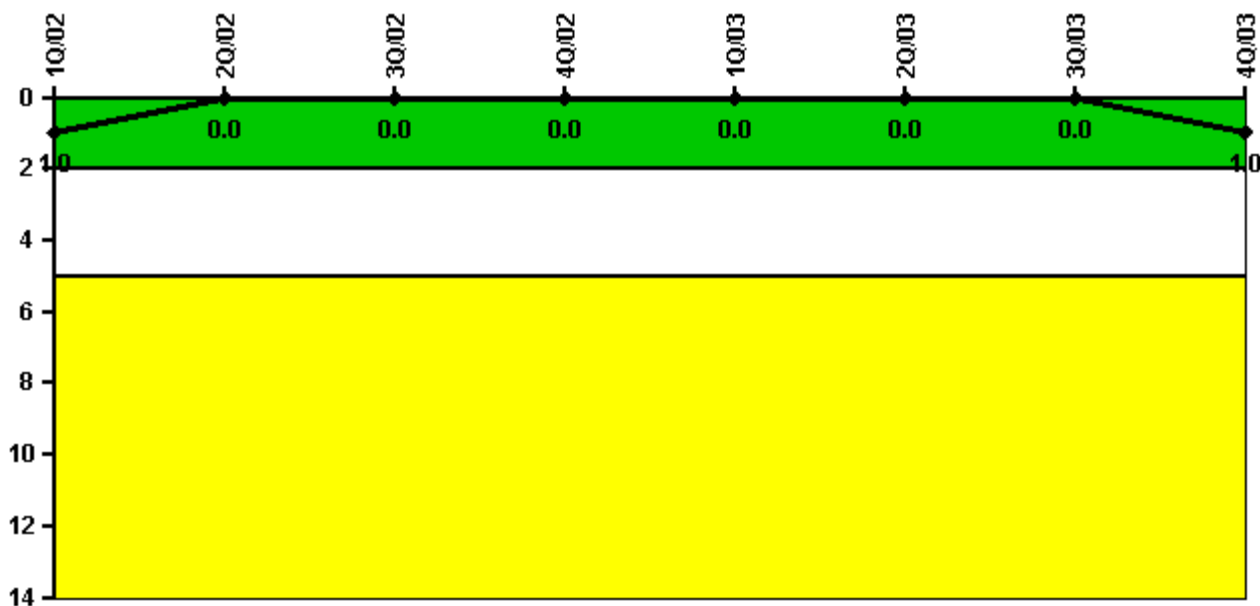
Thresholds: White < 94.0% Yellow < 90.0%

Notes

Alert & Notification System	1Q/02	2Q/02	3Q/02	4Q/02	1Q/03	2Q/03	3Q/03	4Q/03
Successful siren-tests	82	83	84	84	84	82	84	81
Total sirens-tests	84	84	84	84	84	84	84	82
Indicator value	98.8%	98.8%	99.1%	99.1%	99.7%	99.4%	99.4%	99.1%

Licensee Comments: none

Occupational Exposure Control Effectiveness



Thresholds: White > 2.0 Yellow > 5.0

Notes

Occupational Exposure Control Effectiveness	1Q/02	2Q/02	3Q/02	4Q/02	1Q/03	2Q/03	3Q/03	4Q/03
High radiation area occurrences	0	0	0	0	0	0	0	0
Very high radiation area occurrences	0	0	0	0	0	0	0	1
Unintended exposure occurrences	0	0	0	0	0	0	0	0
Indicator value	1	0	0	0	0	0	0	1

Licensee Comments: none

RETS/ODCM Radiological Effluent



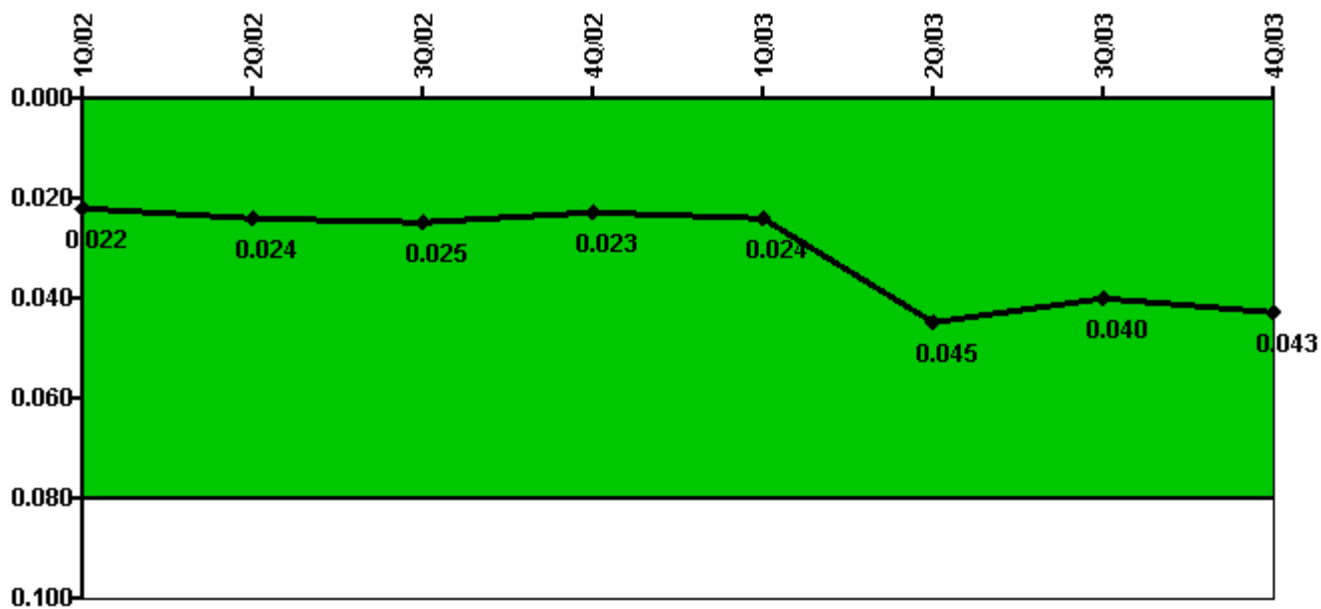
Thresholds: White > 1.0 Yellow > 3.0

Notes

RETS/ODCM Radiological Effluent	1Q/02	2Q/02	3Q/02	4Q/02	1Q/03	2Q/03	3Q/03	4Q/03
RETS/ODCM occurrences	0	0	0	0	0	0	0	0
Indicator value	0	0	0	0	0	0	0	0

Licensee Comments: none

Protected Area Security Performance Index



Thresholds: White > 0.080

Notes

Protected Area Security Performance Index	1Q/02	2Q/02	3Q/02	4Q/02	1Q/03	2Q/03	3Q/03	4Q/03
IDS compensatory hours	187.20	51.30	129.90	27.30	214.90	462.50	81.70	74.00
CCTV compensatory hours	19.8	0.1	56.4	0.5	16.2	25.5	0	24.6
IDS normalization factor	1.20	1.20	1.20	1.20	1.20	1.20	1.20	1.20
CCTV normalization factor	1.0	1.0	1.0	1.0	1.0	1.0	1.0	1.0
Index Value	0.022	0.024	0.025	0.023	0.024	0.045	0.040	0.043

Licensee Comments: none

Personnel Screening Program



Thresholds: White > 2.0 Yellow > 5.0

Notes

Personnel Screening Program	1Q/02	2Q/02	3Q/02	4Q/02	1Q/03	2Q/03	3Q/03	4Q/03
Program failures	0	0	0	0	0	0	0	0
Indicator value	0	0	0	0	0	0	0	0

Licensee Comments: none

FFD/Personnel Reliability



Thresholds: White > 2.0 Yellow > 5.0

Notes

FFD/Personnel Reliability	1Q/02	2Q/02	3Q/02	4Q/02	1Q/03	2Q/03	3Q/03	4Q/03
Program Failures	0	0	0	0	0	0	0	0
Indicator value	0	0	0	0	0	0	0	0

Licensee Comments: none

▲ [PI Summary](#) | [Inspection Findings Summary](#) | [Reactor Oversight Process](#)

Last Modified: January 23, 2004