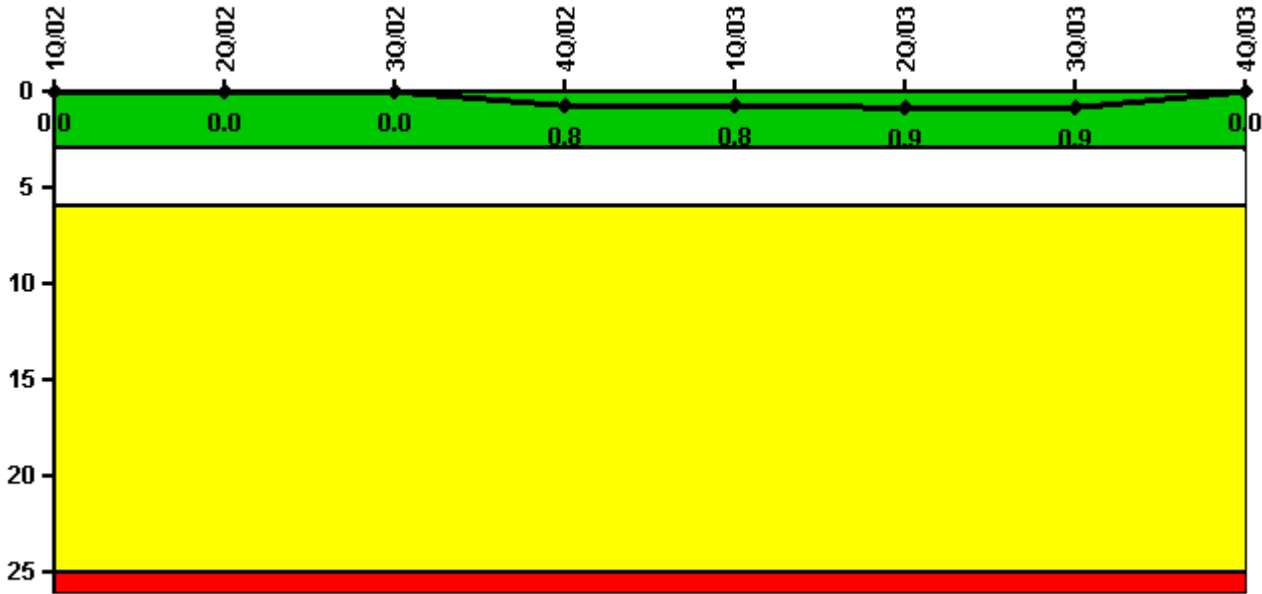


Palisades

4Q/2003 Performance Indicators

Licensee's General Comments: none

Unplanned Scrams per 7000 Critical Hrs



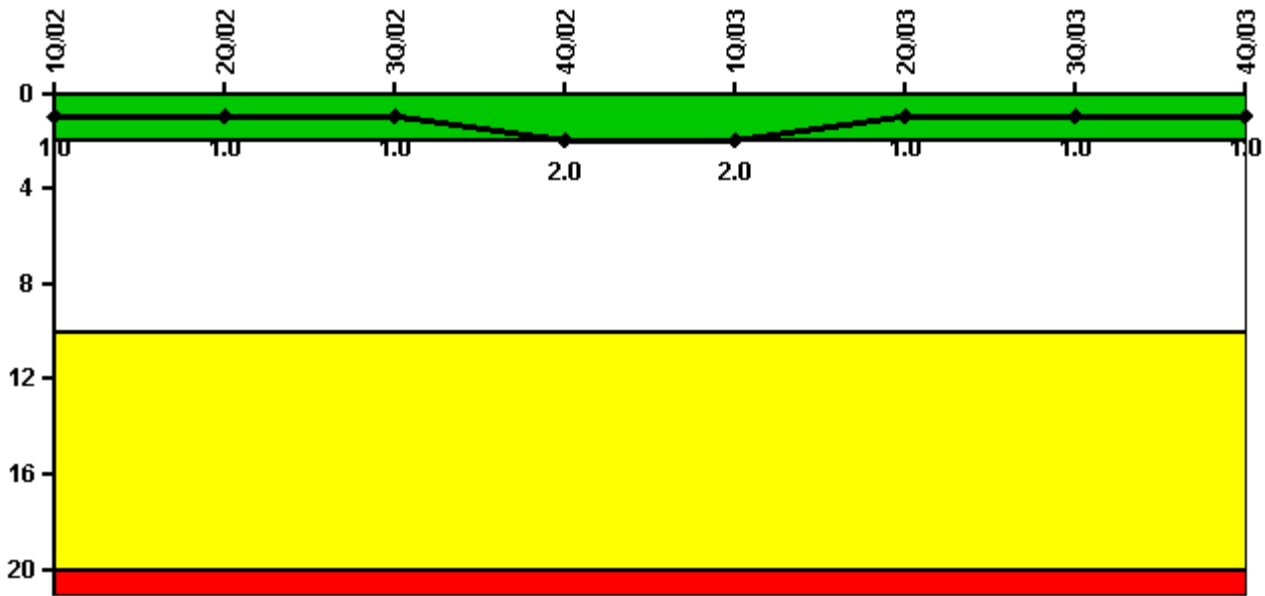
Thresholds: White > 3.0 Yellow > 6.0 Red > 25.0

Notes

Unplanned Scrams per 7000 Critical Hrs	1Q/02	2Q/02	3Q/02	4Q/02	1Q/03	2Q/03	3Q/03	4Q/03
Unplanned scrams	0	0	0	1.0	0	0	0	0
Critical hours	1768.4	2183.0	2208.0	2142.1	1782.4	1743.9	2208.0	2209.0
Indicator value	0	0	0	0.8	0.8	0.9	0.9	0

Licensee Comments: none

Scrams with Loss of Normal Heat Removal



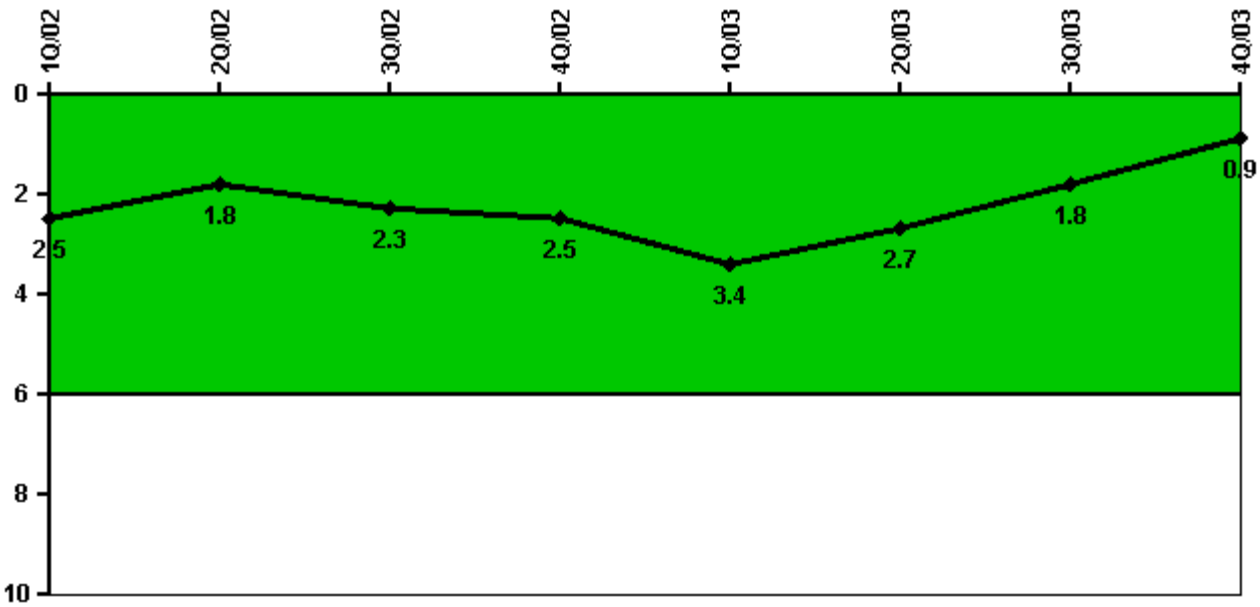
Thresholds: White > 2.0 Yellow > 10.0 Red > 20.0

Notes

Scrams with Loss of Normal Heat Removal	1Q/02	2Q/02	3Q/02	4Q/02	1Q/03	2Q/03	3Q/03	4Q/03
Scrams	0	0	0	1.0	0	0	0	0
Indicator value	1.0	1.0	1.0	2.0	2.0	1.0	1.0	1.0

Licensee Comments: none

Unplanned Power Changes per 7000 Critical Hrs



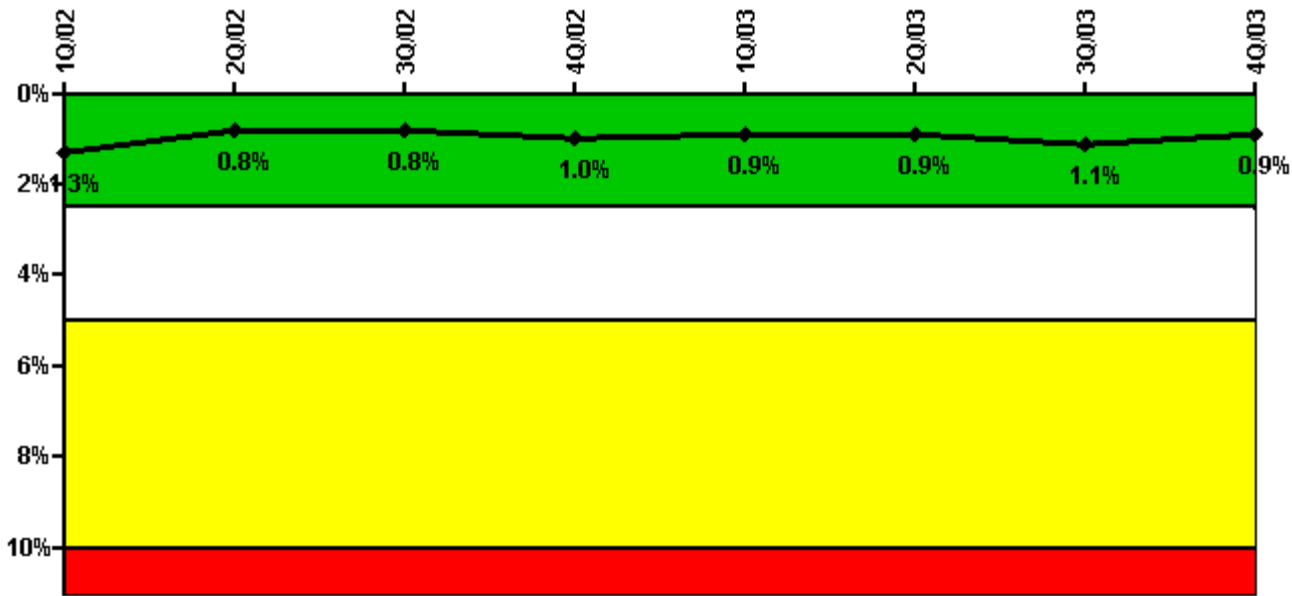
Thresholds: White > 6.0

Notes

Unplanned Power Changes per 7000 Critical Hrs	1Q/02	2Q/02	3Q/02	4Q/02	1Q/03	2Q/03	3Q/03	4Q/03
Unplanned power changes	0	1.0	1.0	1.0	1.0	0	0	0
Critical hours	1768.4	2183.0	2208.0	2142.1	1782.4	1743.9	2208.0	2209.0
Indicator value	2.5	1.8	2.3	2.5	3.4	2.7	1.8	0.9

Licensee Comments: none

Safety System Unavailability, Emergency AC Power



Thresholds: White > 2.5% Yellow > 5.0% Red > 10.0%

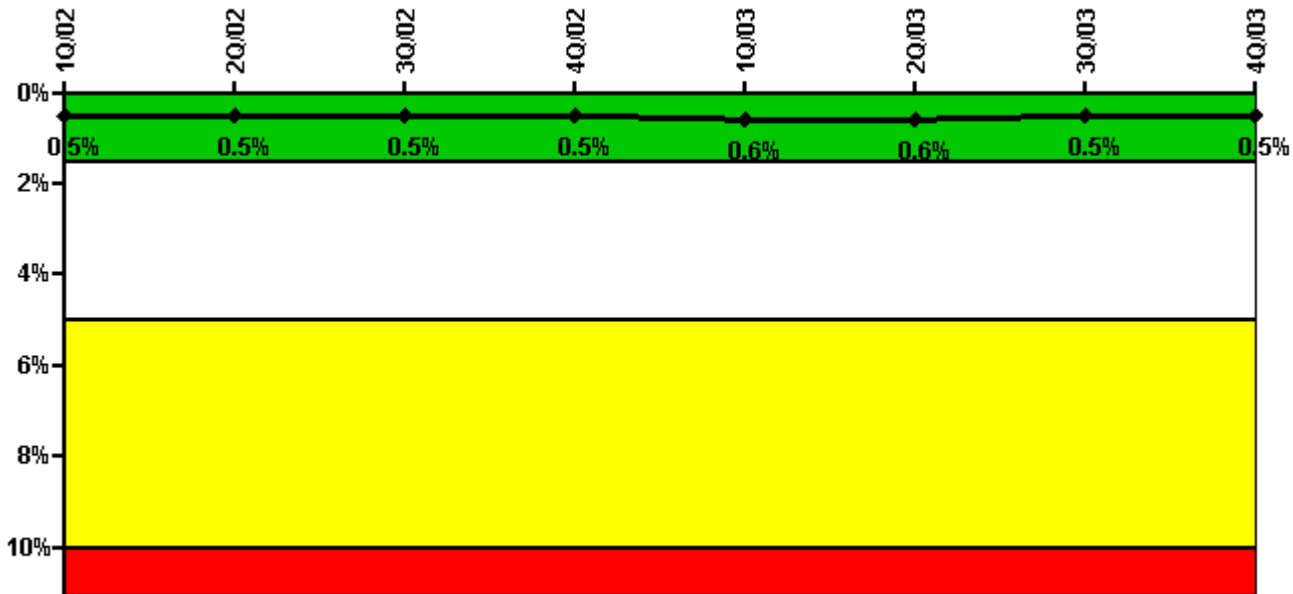
Notes

Safety System Unavailability, Emergency AC Power	1Q/02	2Q/02	3Q/02	4Q/02	1Q/03	2Q/03	3Q/03	4Q/03
Train 1								
Planned unavailable hours	0.57	47.22	3.75	64.58	7.33	12.80	33.60	0.64
Unplanned unavailable hours	0	0	5.72	5.07	5.57	0	11.20	46.35
Fault exposure hours	0	0	4.57	0	0	0	0	0
Effective Reset hours	0	0	0	0	0	0	0	0
Required hours	2160.00	2183.00	2208.00	2209.00	2160.00	2183.00	2208.00	2209.00
Train 2								
Planned unavailable hours	0.99	0.57	3.23	84.63	2.67	17.57	42.75	0.47
Unplanned unavailable hours	6.18	0	32.32	0	15.77	0	0	0
Fault exposure hours	0	0	0	0	0	0	0	0
Effective Reset hours	0	0	0	0	0	0	0	0
Required hours	2160.00	2183.00	2208.00	2209.00	2160.00	2183.00	2208.00	2209.00
Indicator value	1.3%	0.8%	0.8%	1.0%	0.9%	0.9%	1.1%	0.9%

Licensee Comments:

4Q/03: Train 1, Diesel Generator, DG 1-1, Cylinder 1R fuel tube clamping stud was discovered broken on 12/7/2003 at 22:34. The broken stud is one of two clamping studs that secure a fuel tube to the fuel injector. The broken stud was identified after the engine was shut down following a successful monthly surveillance test. The stud is believed to have broken some time during the last hour of the surveillance test. Since the time of failure was not known with certainty T/2 Fault Exposure hours are added to the comment section only. T/2 Fault Exposure Hours are reported for the time between the completion of previous Surveillance Test on 11/12/03 at 2:38 until discovery of stud failure on 12/7/03 at 22:34. This is 25 days 19.93 hours. T/2 Fault exposure = 620 hours / 2 = 310 hours.

Safety System Unavailability, High Pressure Injection System (HPSI)



Thresholds: White > 1.5% Yellow > 5.0% Red > 10.0%

Notes

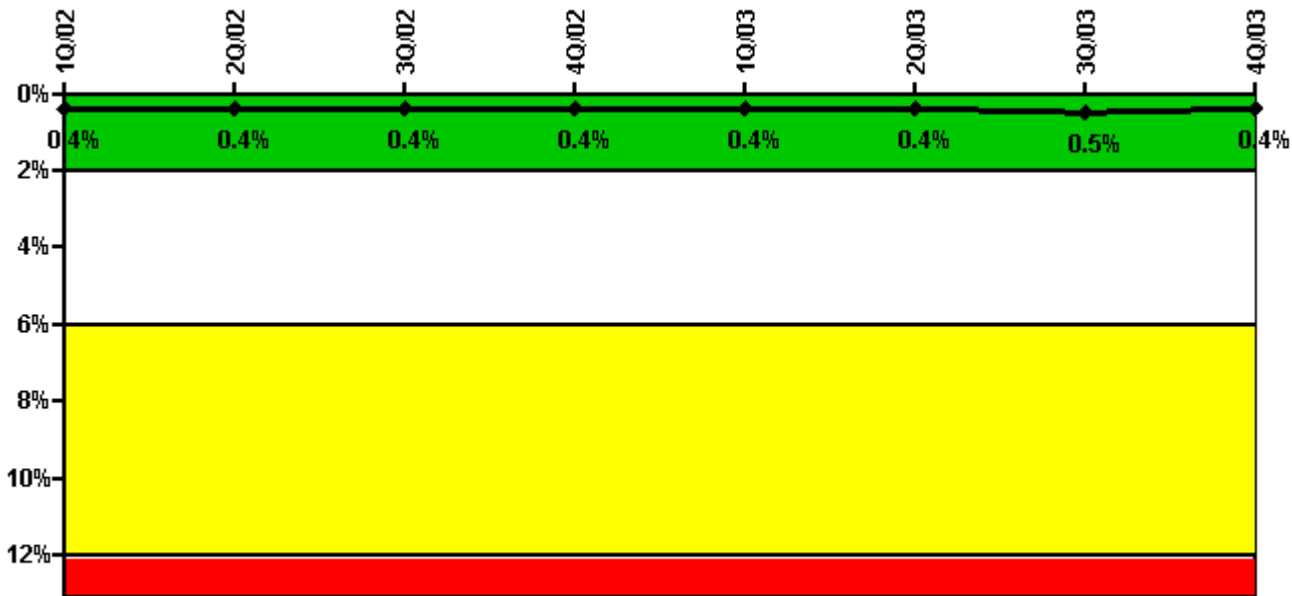
Safety System Unavailability, High Pressure Injection System (HPSI)	1Q/02	2Q/02	3Q/02	4Q/02	1Q/03	2Q/03	3Q/03	4Q/03
Train 1								
Planned unavailable hours	10.93	0	6.06	0.68	18.96	12.78	0	8.08
Unplanned unavailable hours	8.72	0	0	18.22	0	0	0	4.25
Fault exposure hours	0	0	0	0	0	0	0	0
Effective Reset hours	0	0	0	0	0	0	0	0
Required hours	1851.33	2183.00	2208.00	2209.00	1795.10	1777.52	2208.00	2209.00
Train 2								
Planned unavailable hours	12.58	23.08	0.37	4.22	6.29	0	2.40	0.47
Unplanned unavailable hours	0	0	0	0	0	0	43.57	0
Fault exposure hours	0	0	0	0	0	0	0	0
Effective Reset hours	0	0	0	0	0	0	0	0
Required hours	1851.33	2183.00	2208.00	2209.00	1795.10	1777.52	2208.00	2209.00
Indicator value	0.5%	0.5%	0.5%	0.5%	0.6%	0.6%	0.5%	0.5%

Licensee Comments:

3Q/03: HPSI train 1, HPSI pump, P-66B sub-cooling valve CV-3070 failed to open on 8/10/2003. The time of

failure was not known with certainty. T/2 Fault Exposure Hours are associated with this failure. T/2 Fault Exposure hours are calculated as follows: The failure of CV-3070 to open occurred on 8/10/03 at 1930 hours. This was 83 days, 22 hours, 28 minutes after the last recorded successful operation. This is equivalent to 2,014.47 hours. Dividing these hours by 2 results in a total of 1,007.2 hours. T/2 Fault Exposure hours = 1,007.2 hours.

Safety System Unavailability, Heat Removal System (AFW)



Thresholds: White > 2.0% Yellow > 6.0% Red > 12.0%

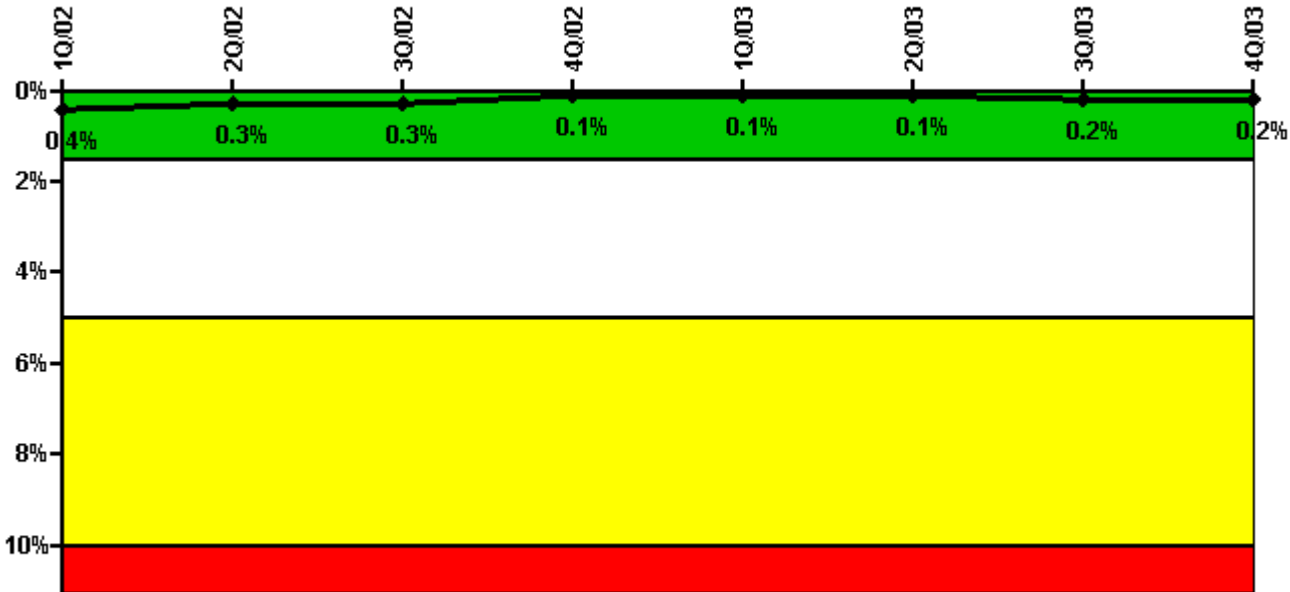
Notes

Safety System Unavailability, Heat Removal System (AFW)	1Q/02	2Q/02	3Q/02	4Q/02	1Q/03	2Q/03	3Q/03	4Q/03
Train 1								
Planned unavailable hours	4.40	2.48	6.18	5.38	1.42	1.27	25.78	2.01
Unplanned unavailable hours	0	0	0	0	0.32	0	25.37	0
Fault exposure hours	0	0	0	0	0	0	0	0
Effective Reset hours	0	0	0	0	0	0	0	0
Required hours	1851.33	2183.00	2208.00	2209.00	1795.10	1777.52	2208.00	2209.00
Train 2								
Planned unavailable hours	1.22	3.55	6.18	2.06	1.88	15.51	18.57	2.05
Unplanned unavailable hours	0	0	0	0	0.32	0	0	0
Fault exposure hours	0	0	0	0	0	0	0	0
Effective Reset hours	0	0	0	0	0	0	0	0
Required hours	1768.40	2183.00	2208.00	2209.00	1795.10	1777.52	2208.00	2209.00
Train 3								

Planned unavailable hours	1.08	0.73	12.72	0.95	10.15	35.80	1.82	15.91
Unplanned unavailable hours	0	0	0	0	0.18	0	0	0
Fault exposure hours	0	0	0	0	0	0	0	0
Effective Reset hours	0	0	0	0	0	0	0	0
Required hours	1851.33	2183.00	2208.00	2209.00	1795.10	1777.52	2208.00	2209.00
Indicator value	0.4%	0.4%	0.4%	0.4%	0.4%	0.4%	0.5%	0.4%

Licensee Comments: none

Safety System Unavailability, Residual Heat Removal System



Thresholds: White > 1.5% Yellow > 5.0% Red > 10.0%

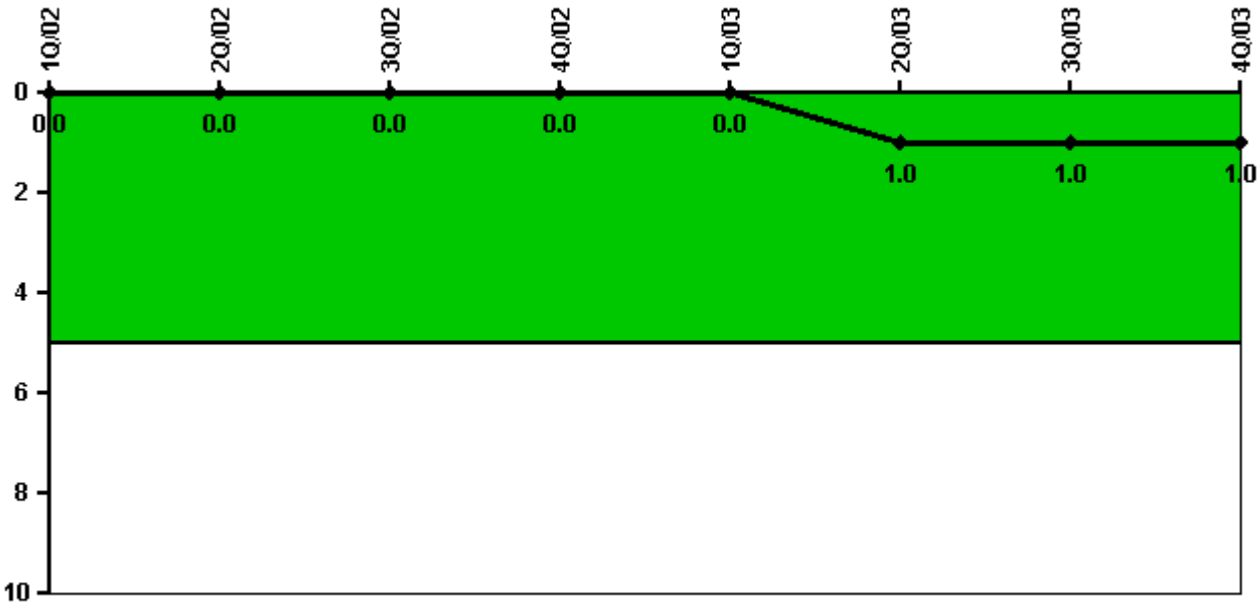
Notes

Safety System Unavailability, Residual Heat Removal System	1Q/02	2Q/02	3Q/02	4Q/02	1Q/03	2Q/03	3Q/03	4Q/03
Train 1								
Planned unavailable hours	2.30	0.92	1.01	8.20	17.59	0.90	62.65	3.65
Unplanned unavailable hours	0	0	0	0	0	0	0	0
Fault exposure hours	0	0	0	0	0	0	0	0
Effective Reset hours	0	0	0	0	0	0	0	0
Required hours	1851.33	2183.00	2208.00	2209.00	1795.10	1777.52	2208.00	2209.00
Train 2								
Planned unavailable hours	0	0.66	0	0	3.38	0	0.05	0.47
Unplanned unavailable hours	0	0	0	0	0	0	0	0

Fault exposure hours	0	0	0	0	0	0	0	0
Effective Reset hours	0	0	0	0	0	0	0	0
Required hours	1851.33	2183.00	2208.00	2209.00	1795.10	1777.52	2208.00	2209.00
Train 3								
Planned unavailable hours	0	0	0	0	0	0	0	0
Unplanned unavailable hours	0	0	0	0	0.33	0	0	0
Fault exposure hours	0	0	0	0	0	0	0	0
Effective Reset hours	0	0	0	0	0	0	0	0
Required hours	302.12	0	0	0	364.90	295.68	0	0
Train 4								
Planned unavailable hours	0	0	0	0	9.77	0	0	0
Unplanned unavailable hours	0	0	0	0	0.33	0	0	0
Fault exposure hours	0	0	0	0	0	0	0	0
Effective Reset hours	0	0	0	0	0	0	0	0
Required hours	302.12	0	0	0	364.90	343.66	0	0
Indicator value	0.4%	0.3%	0.3%	0.1%	0.1%	0.1%	0.2%	0.2%

Licensee Comments: none

Safety System Functional Failures (PWR)



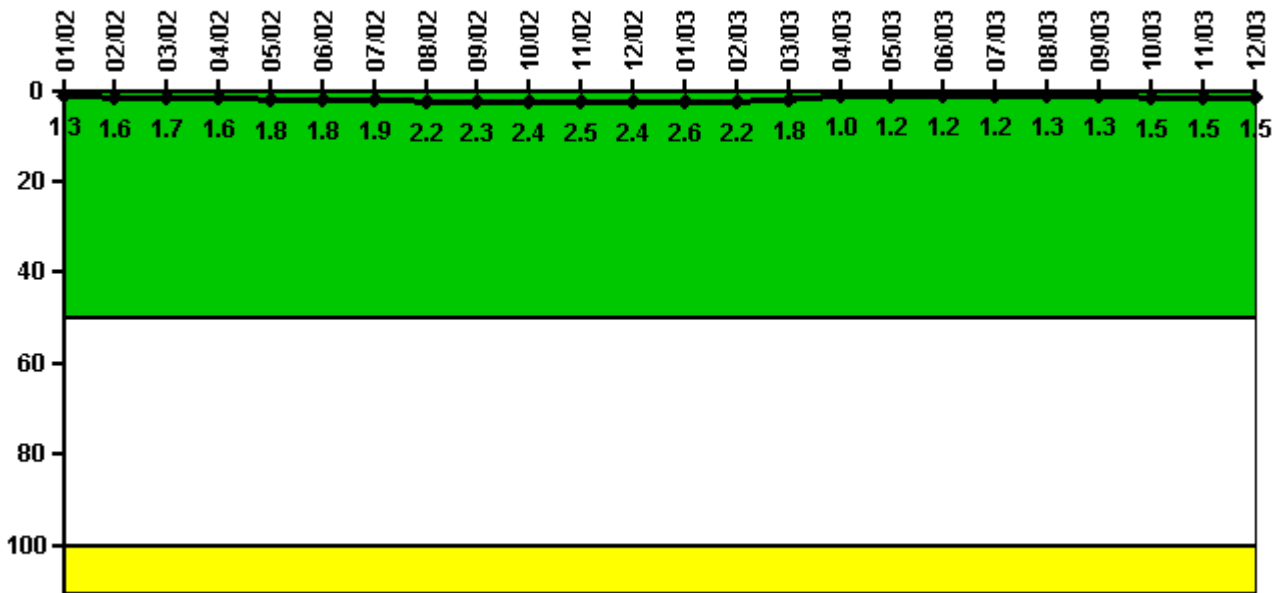
Thresholds: White > 5.0

Notes

Safety System Functional Failures (PWR)	1Q/02	2Q/02	3Q/02	4Q/02	1Q/03	2Q/03	3Q/03	4Q/03
Safety System Functional Failures	0	0	0	0	0	1	0	0
Indicator value	0	0	0	0	0	1	1	1

Licensee Comments: none

Reactor Coolant System Activity



Thresholds: White > 50.0 Yellow > 100.0

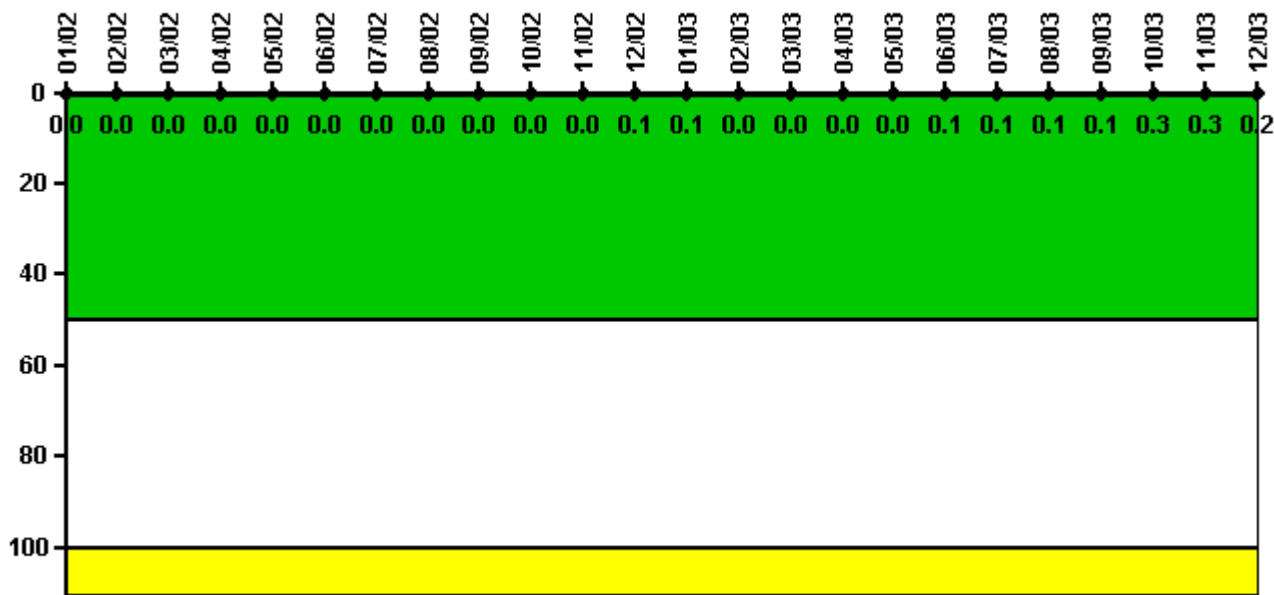
Notes

Reactor Coolant System Activity	1/02	2/02	3/02	4/02	5/02	6/02	7/02	8/02	9/02	10/02	11/02	12/02
Maximum activity	0.013300	0.016400	0.017300	0.016300	0.018100	0.018100	0.019300	0.021700	0.022700	0.023500	0.024700	0.024400
Technical specification limit	1.0	1.0	1.0	1.0	1.0	1.0	1.0	1.0	1.0	1.0	1.0	1.0
Indicator value	1.3	1.6	1.7	1.6	1.8	1.8	1.9	2.2	2.3	2.4	2.5	2.4

Reactor Coolant System Activity	1/03	2/03	3/03	4/03	5/03	6/03	7/03	8/03	9/03	10/03	11/03	12/03
Maximum activity	0.026000	0.022200	0.017900	0.009580	0.011800	0.011600	0.012200	0.012800	0.013300	0.014600	0.014900	0.015400
Technical specification limit	1.0	1.0	1.0	1.0	1.0	1.0	1.0	1.0	1.0	1.0	1.0	1.0
Indicator value	2.6	2.2	1.8	1.0	1.2	1.2	1.2	1.3	1.3	1.5	1.5	1.5

Licensee Comments: none

Reactor Coolant System Leakage



Thresholds: White > 50.0 Yellow > 100.0

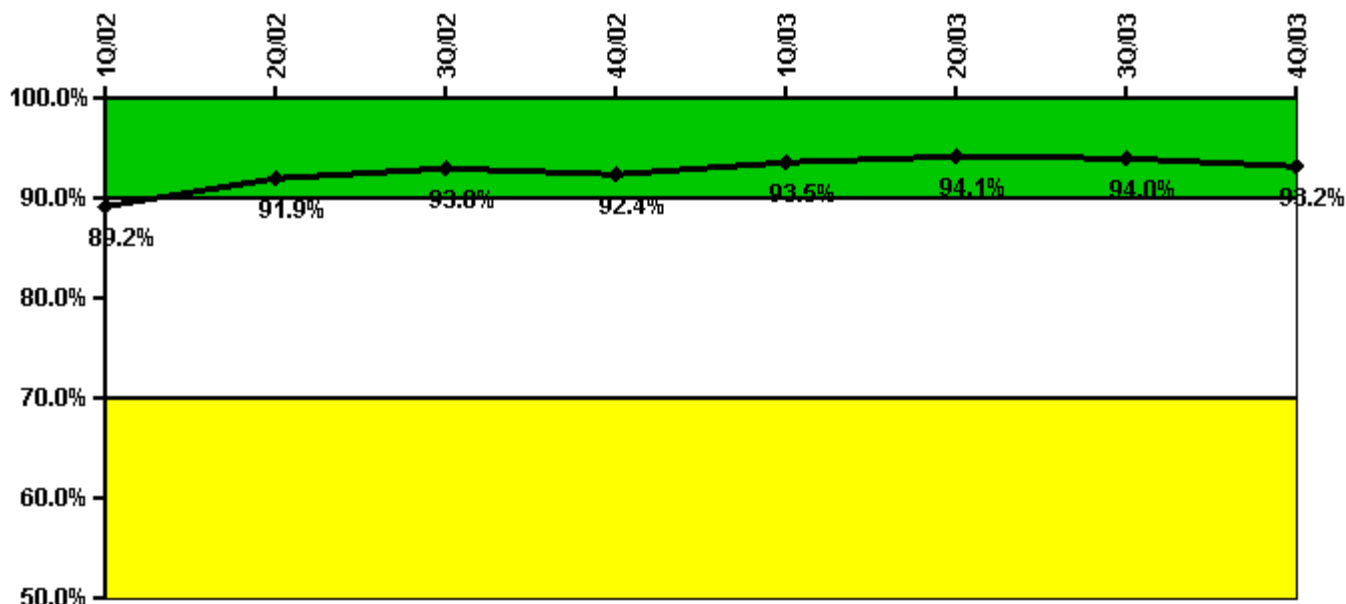
Notes

Reactor Coolant System Leakage	1/02	2/02	3/02	4/02	5/02	6/02	7/02	8/02	9/02	10/02	11/02	12/02
Maximum leakage	0.003	0	0	0.002	0.002	0.002	0.002	0.002	0.001	0.001	0.001	0.005
Technical specification limit	10.0	10.0	10.0	10.0	10.0	10.0	10.0	10.0	10.0	10.0	10.0	10.0
Indicator value	0	0	0	0	0	0	0	0	0	0	0	0.1

Reactor Coolant System Leakage	1/03	2/03	3/03	4/03	5/03	6/03	7/03	8/03	9/03	10/03	11/03	12/03
Maximum leakage	0.005	0.001	0.001	0.002	0.002	0.007	0.013	0.013	0.011	0.029	0.026	0.018
Technical specification limit	10.0	10.0	10.0	10.0	10.0	10.0	10.0	10.0	10.0	10.0	10.0	10.0
Indicator value	0.1	0	0	0	0	0.1	0.1	0.1	0.1	0.3	0.3	0.2

Licensee Comments: none

Drill/Exercise Performance



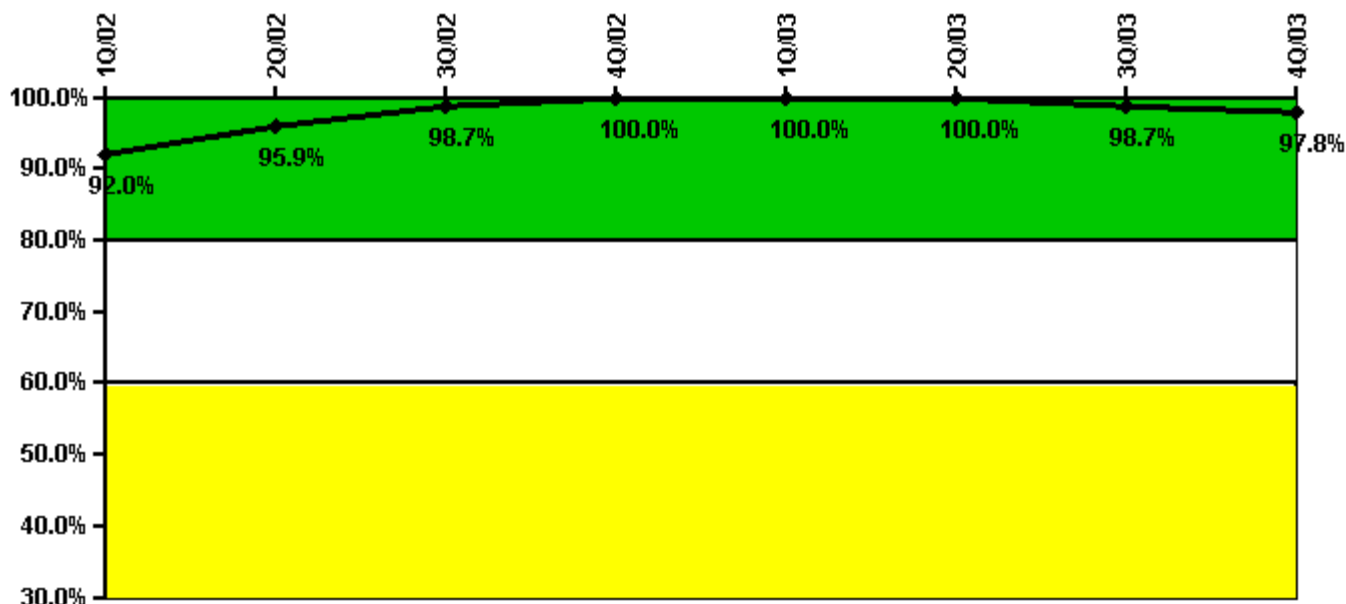
Thresholds: White < 90.0% Yellow < 70.0%

Notes

Drill/Exercise Performance	1Q/02	2Q/02	3Q/02	4Q/02	1Q/03	2Q/03	3Q/03	4Q/03
Successful opportunities	15.0	69.0	11.0	24.0	38.0	18.0	44.0	28.0
Total opportunities	20.0	72.0	11.0	26.0	39.0	18.0	47.0	32.0
Indicator value	89.2%	91.9%	93.0%	92.4%	93.5%	94.1%	94.0%	93.2%

Licensee Comments: none

ERO Drill Participation



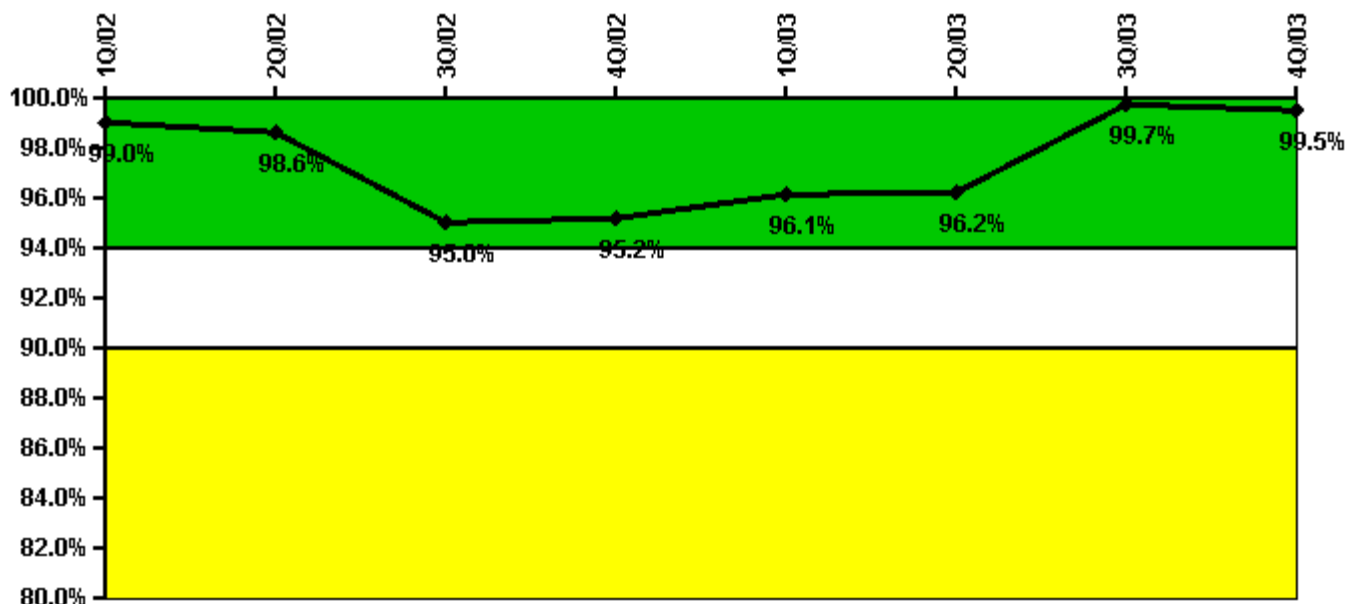
Thresholds: White < 80.0% Yellow < 60.0%

Notes

ERO Drill Participation	1Q/02	2Q/02	3Q/02	4Q/02	1Q/03	2Q/03	3Q/03	4Q/03
Participating Key personnel	69.0	71.0	74.0	76.0	75.0	72.0	74.0	90.0
Total Key personnel	75.0	74.0	75.0	76.0	75.0	72.0	75.0	92.0
Indicator value	92.0%	95.9%	98.7%	100.0%	100.0%	100.0%	98.7%	97.8%

Licensee Comments: none

Alert & Notification System



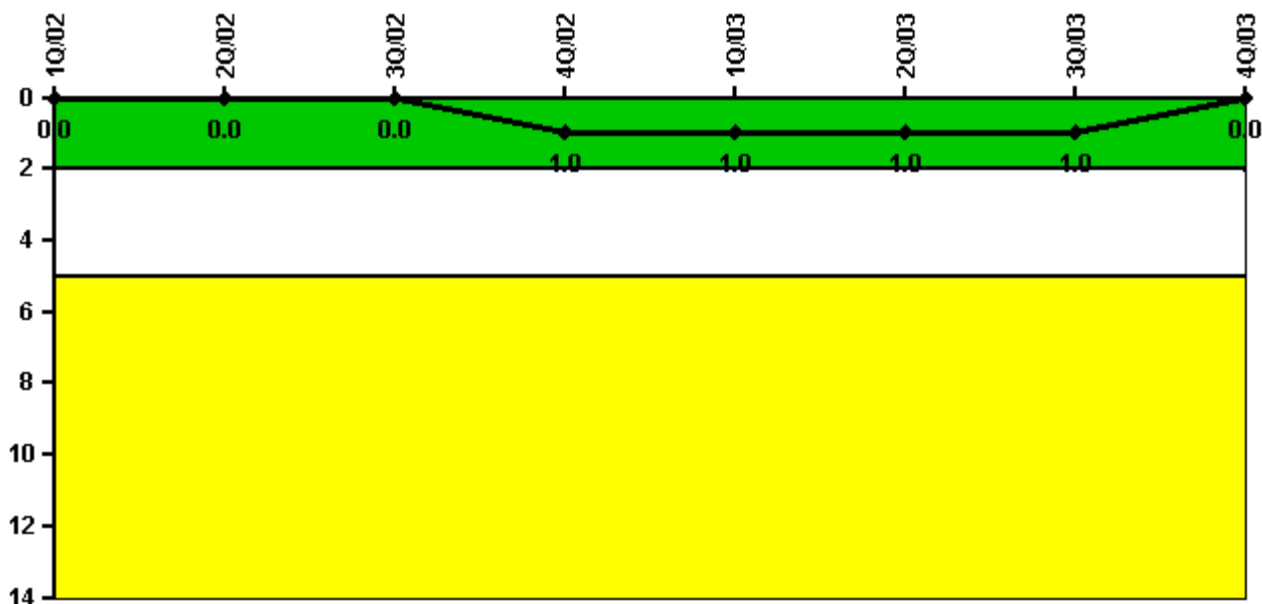
Thresholds: White < 94.0% Yellow < 90.0%

Notes

Alert & Notification System	1Q/02	2Q/02	3Q/02	4Q/02	1Q/03	2Q/03	3Q/03	4Q/03
Successful siren-tests	251	247	210	252	486	182	183	181
Total sirens-tests	252	252	252	252	488	183	183	183
Indicator value	99.0%	98.6%	95.0%	95.2%	96.1%	96.2%	99.7%	99.5%

Licensee Comments: none

Occupational Exposure Control Effectiveness



Thresholds: White > 2.0 Yellow > 5.0

Notes

Occupational Exposure Control Effectiveness	1Q/02	2Q/02	3Q/02	4Q/02	1Q/03	2Q/03	3Q/03	4Q/03
High radiation area occurrences	0	0	0	0	0	0	0	0
Very high radiation area occurrences	0	0	0	0	0	0	0	0
Unintended exposure occurrences	0	0	0	1	0	0	0	0
Indicator value	0	0	0	1	1	1	1	0

Licensee Comments: none

RETS/ODCM Radiological Effluent



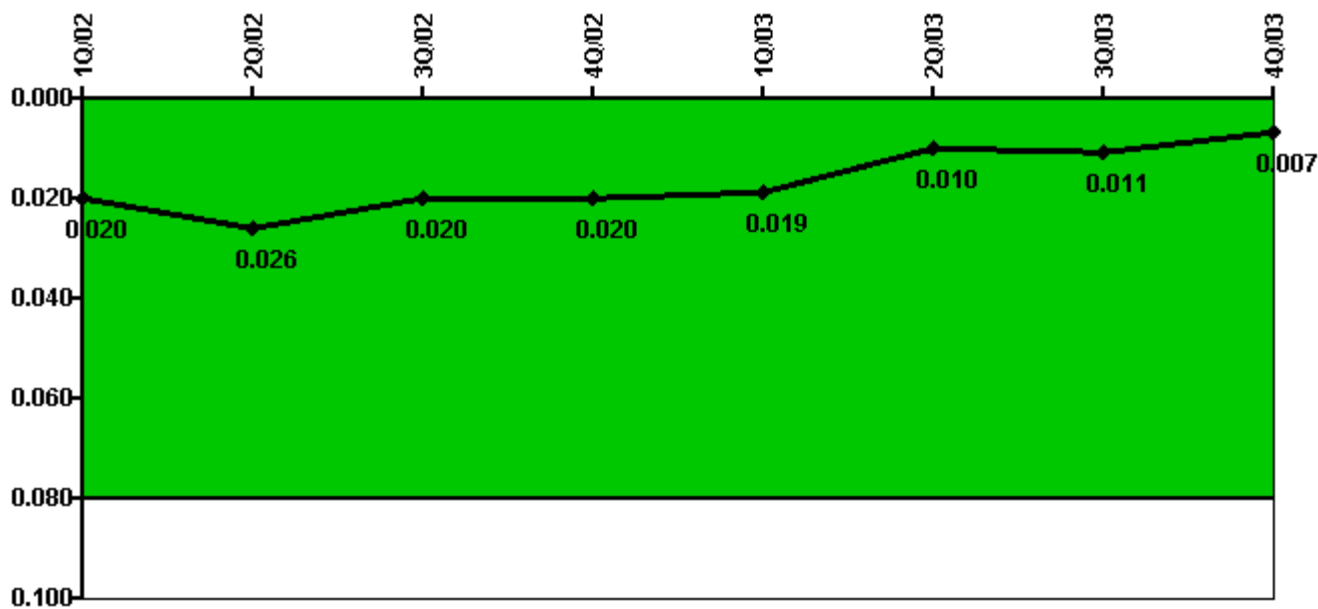
Thresholds: White > 1.0 Yellow > 3.0

Notes

RETS/ODCM Radiological Effluent	1Q/02	2Q/02	3Q/02	4Q/02	1Q/03	2Q/03	3Q/03	4Q/03
RETS/ODCM occurrences	0	0	0	0	0	0	0	0
Indicator value	0	0	0	0	0	0	0	0

Licensee Comments: none

Protected Area Security Performance Index



Thresholds: White > 0.080

Notes

Protected Area Security Performance Index	1Q/02	2Q/02	3Q/02	4Q/02	1Q/03	2Q/03	3Q/03	4Q/03
IDS compensatory hours	74.69	279.20	22.20	137.42	35.02	53.18	63.92	37.83
CCTV compensatory hours	0	0	0	0	0	0	0	0
IDS normalization factor	1.45	1.45	1.45	1.45	1.45	1.45	1.45	1.45
CCTV normalization factor	1.0	1.0	1.0	1.0	1.0	1.0	1.0	1.0
Index Value	0.020	0.026	0.020	0.020	0.019	0.010	0.011	0.007

Licensee Comments: none

Personnel Screening Program



Thresholds: White > 2.0 Yellow > 5.0

Notes

Personnel Screening Program	1Q/02	2Q/02	3Q/02	4Q/02	1Q/03	2Q/03	3Q/03	4Q/03
Program failures	0	0	0	0	0	0	0	0
Indicator value	0	0	0	0	0	0	0	0

Licensee Comments: none

FFD/Personnel Reliability



Thresholds: White > 2.0 Yellow > 5.0

Notes

FFD/Personnel Reliability	1Q/02	2Q/02	3Q/02	4Q/02	1Q/03	2Q/03	3Q/03	4Q/03
Program Failures	0	0	0	0	0	0	0	0
Indicator value	0	0	0	0	0	0	0	0

Licensee Comments: none

▲ [PI Summary](#) | [Inspection Findings Summary](#) | [Reactor Oversight Process](#)

Last Modified: January 23, 2004