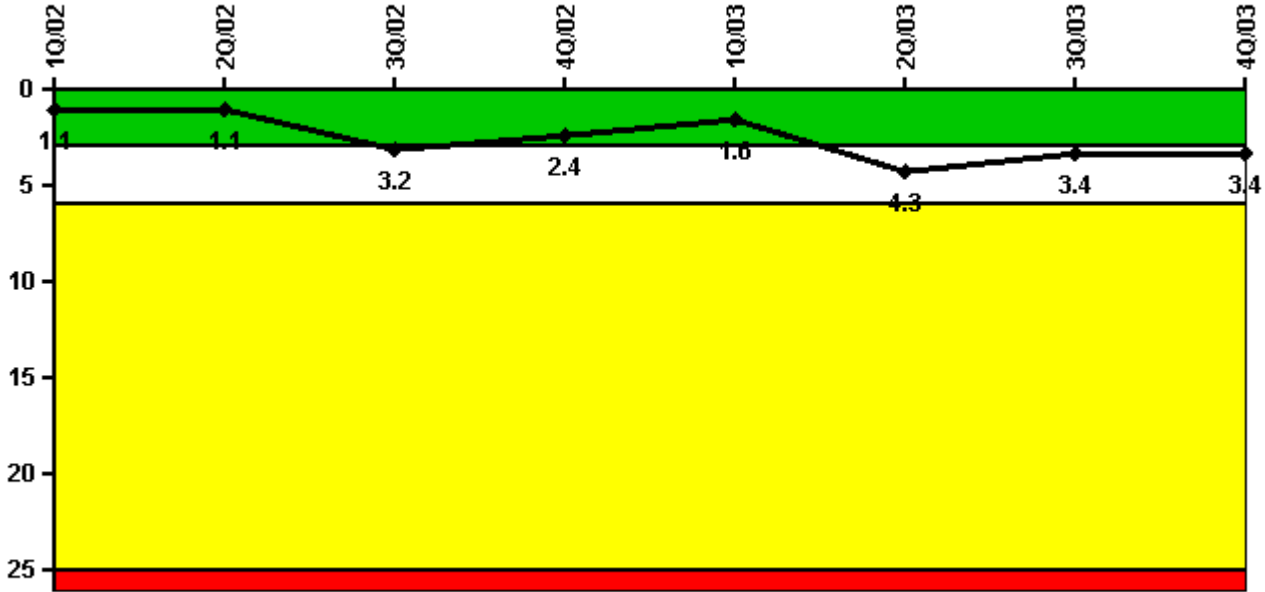


# Harris 1

## 4Q/2003 Performance Indicators

Licensee's General Comments: none

### Unplanned Scrams per 7000 Critical Hrs



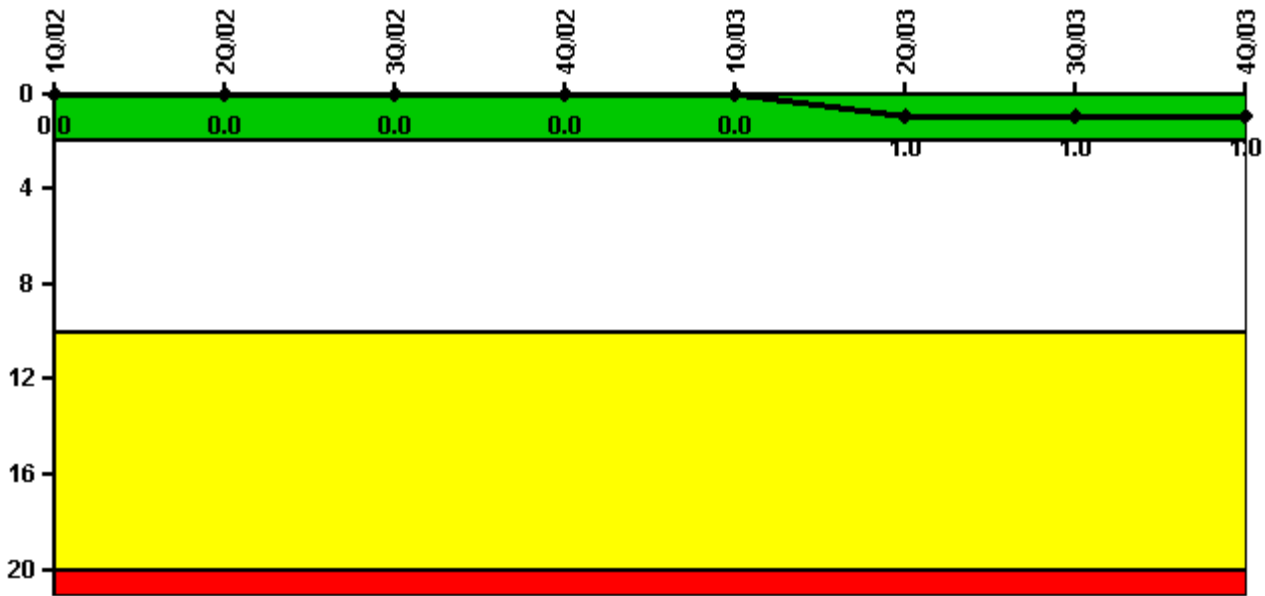
Thresholds: White > 3.0 Yellow > 6.0 Red > 25.0

### Notes

Unplanned Scrams per 7000 Critical Hrs	1Q/02	2Q/02	3Q/02	4Q/02	1Q/03	2Q/03	3Q/03	4Q/03
Unplanned scrams	1.0	0	2.0	0	0	3.0	1.0	0
Critical hours	2142.3	2184.0	2173.9	2209.0	2160.0	1605.6	2190.4	2209.0
Indicator value	1.1	1.1	3.2	2.4	1.6	4.3	3.4	3.4

Licensee Comments: none

### Scrams with Loss of Normal Heat Removal



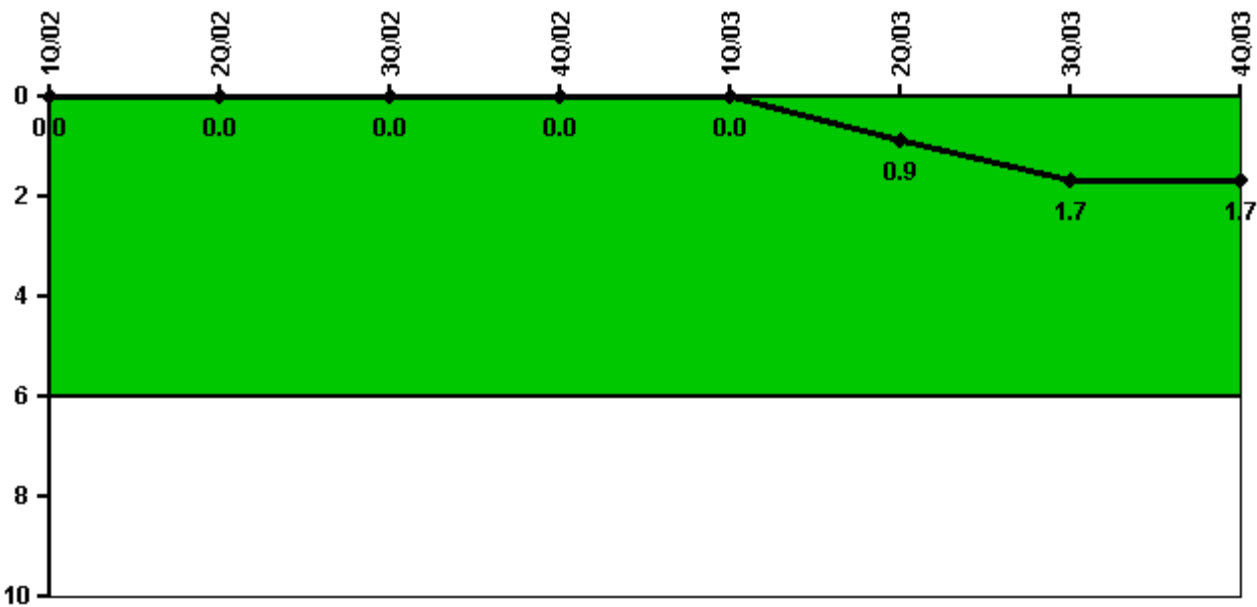
Thresholds: White > 2.0 Yellow > 10.0 Red > 20.0

#### Notes

Scrams with Loss of Normal Heat Removal	1Q/02	2Q/02	3Q/02	4Q/02	1Q/03	2Q/03	3Q/03	4Q/03
Scrams	0	0	0	0	0	1.0	0	0
Indicator value	0	0	0	0	0	1.0	1.0	1.0

Licensee Comments: none

### Unplanned Power Changes per 7000 Critical Hrs



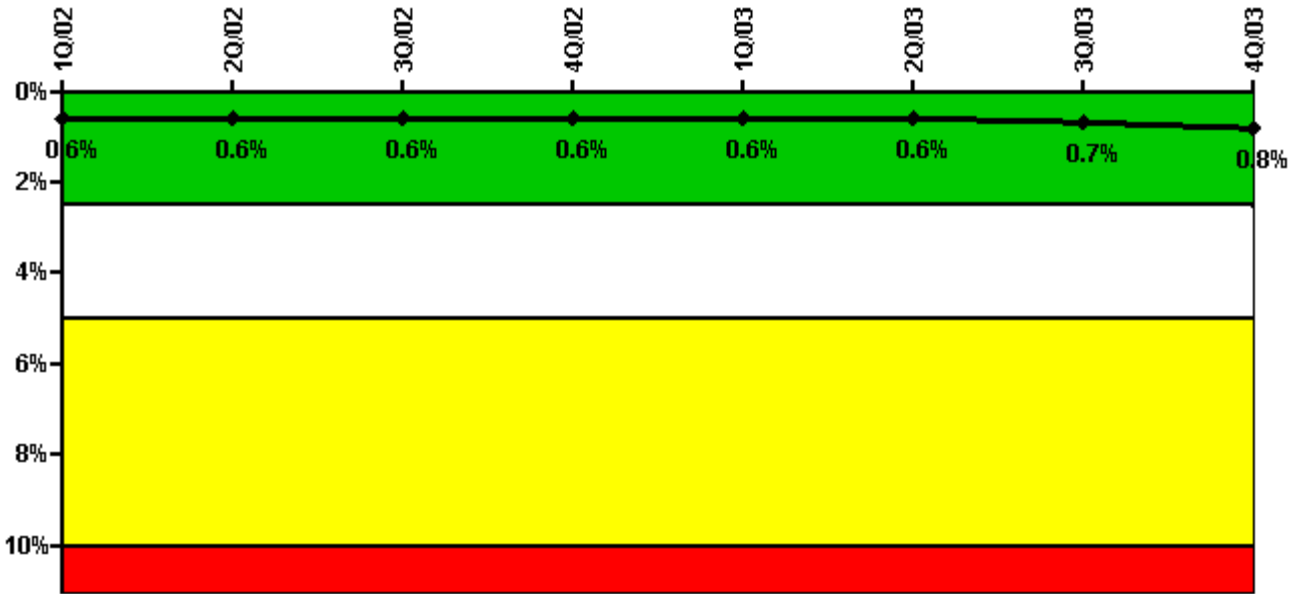
Thresholds: White > 6.0

#### Notes

Unplanned Power Changes per 7000 Critical Hrs	1Q/02	2Q/02	3Q/02	4Q/02	1Q/03	2Q/03	3Q/03	4Q/03
Unplanned power changes	0	0	0	0	0	1.0	1.0	0
Critical hours	2142.3	2184.0	2173.9	2209.0	2160.0	1605.6	2190.4	2209.0
Indicator value	0	0	0	0	0	0.9	1.7	1.7

Licensee Comments: none

### Safety System Unavailability, Emergency AC Power



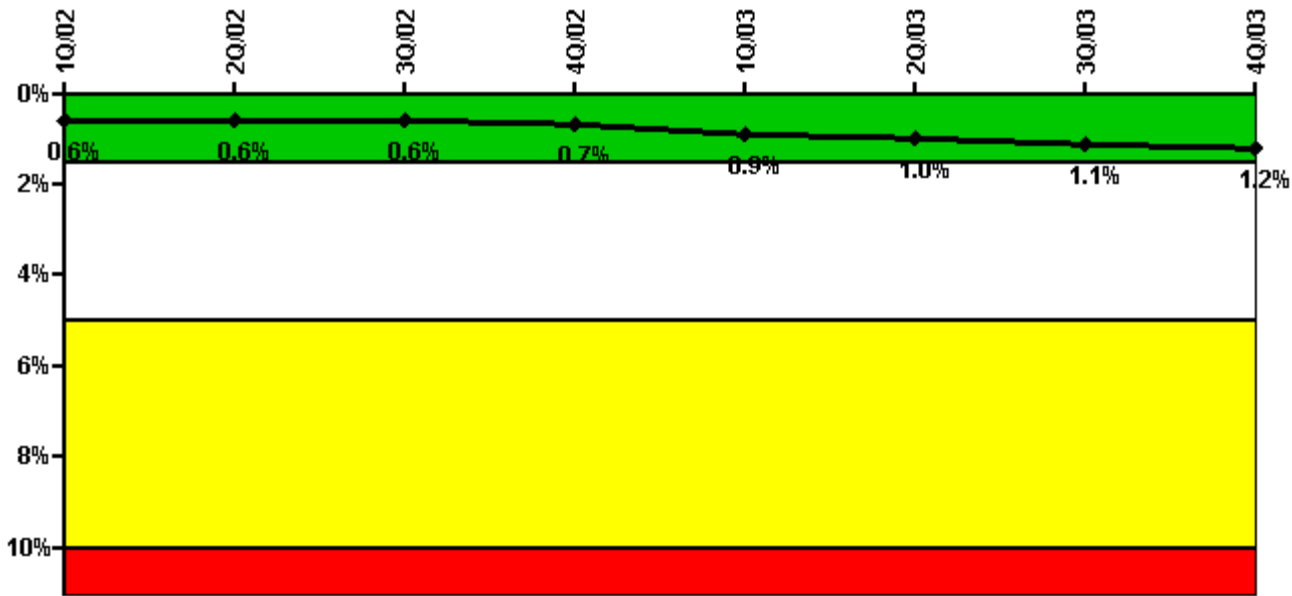
Thresholds: White > 2.5% Yellow > 5.0% Red > 10.0%

**Notes**

Safety System Unavailability, Emergency AC Power	1Q/02	2Q/02	3Q/02	4Q/02	1Q/03	2Q/03	3Q/03	4Q/03
<b>Train 1</b>								
Planned unavailable hours	16.98	4.48	10.47	11.20	1.97	17.75	33.50	20.74
Unplanned unavailable hours	0	0	0	3.20	0	0	0	0
Fault exposure hours	0	0	0	0	0	0	0	0
Effective Reset hours	0	0	0	0	0	0	0	0
Required hours	2160.00	2184.00	2208.00	2209.00	2160.00	1859.58	2208.00	2209.00
<b>Train 2</b>								
Planned unavailable hours	14.29	12.35	1.43	17.25	24.03	2.57	68.78	8.45
Unplanned unavailable hours	0	11.95	0	0	0	0	0	0
Fault exposure hours	0	0	0	0	0	0	0	0
Effective Reset hours	0	0	0	0	0	0	0	0
Required hours	2160.00	2184.00	2208.00	2209.00	2160.00	2152.97	2208.00	2209.00
Indicator value	0.6%	0.6%	0.6%	0.6%	0.6%	0.6%	0.7%	0.8%

Licensee Comments: none

### Safety System Unavailability, High Pressure Injection System (HPSI)



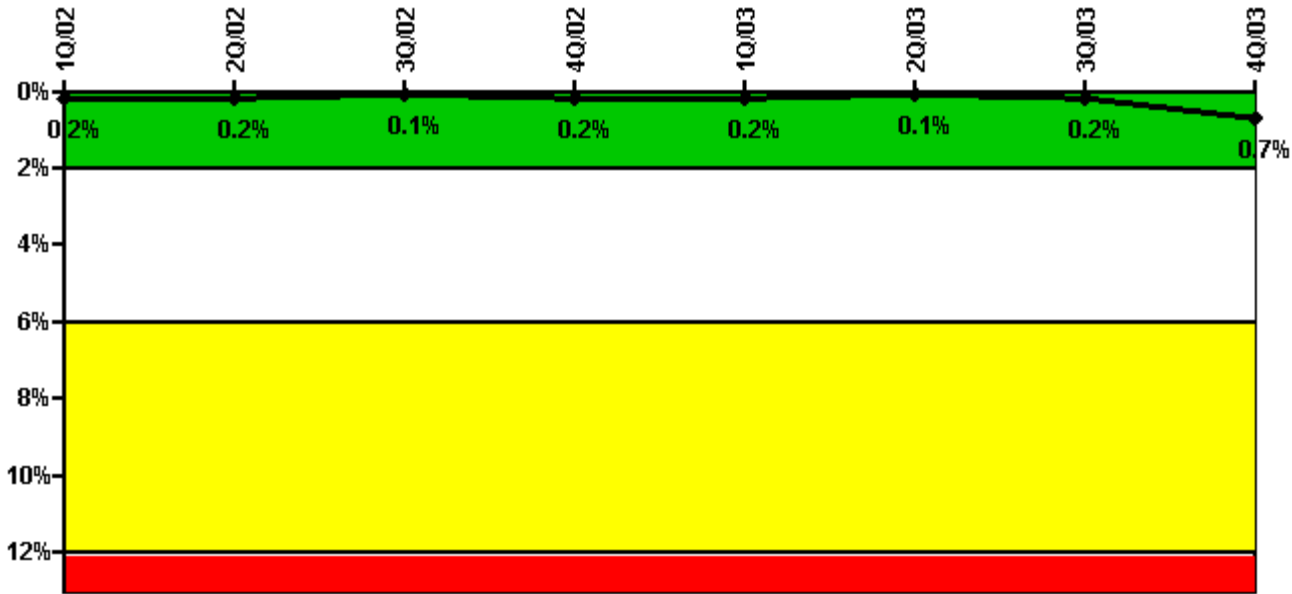
Thresholds: White > 1.5% Yellow > 5.0% Red > 10.0%

**Notes**

Safety System Unavailability, High Pressure Injection System (HPSI)	1Q/02	2Q/02	3Q/02	4Q/02	1Q/03	2Q/03	3Q/03	4Q/03
<b>Train 1</b>								
Planned unavailable hours	29.17	16.07	18.05	15.22	71.33	19.50	49.10	31.40
Unplanned unavailable hours	10.45	0.55	0	18.73	0	0	0	8.60
Fault exposure hours	0	0	0	0	0	0	0	0
Effective Reset hours	0	0	0	0	0	0	0	0
Required hours	2160.00	2184.00	2208.00	2209.00	2160.00	1830.60	2208.00	2209.00
<b>Train 2</b>								
Planned unavailable hours	10.90	22.90	16.13	6.68	37.72	15.00	22.30	20.00
Unplanned unavailable hours	0	0	0	0	7.65	0	0	0
Fault exposure hours	0	0	0	0	0	0	0	0
Effective Reset hours	0	0	0	0	0	0	0	0
Required hours	2160.00	2184.00	2208.00	2209.00	2160.00	1830.60	2208.00	2209.00
<b>Indicator value</b>	<b>0.6%</b>	<b>0.6%</b>	<b>0.6%</b>	<b>0.7%</b>	<b>0.9%</b>	<b>1.0%</b>	<b>1.1%</b>	<b>1.2%</b>

Licensee Comments: none

### Safety System Unavailability, Heat Removal System (AFW)



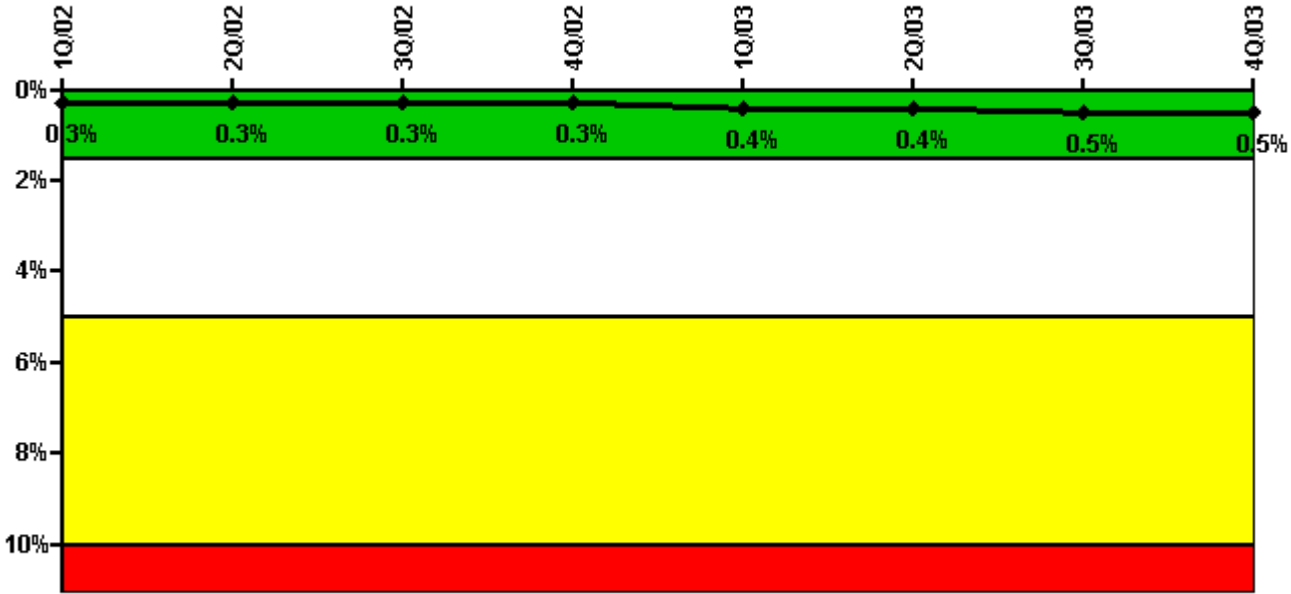
Thresholds: White > 2.0% Yellow > 6.0% Red > 12.0%

**Notes**

Safety System Unavailability, Heat Removal System (AFW)	1Q/02	2Q/02	3Q/02	4Q/02	1Q/03	2Q/03	3Q/03	4Q/03
<b>Train 1</b>								
Planned unavailable hours	0	0	0.73	0	0	1.13	5.40	0
Unplanned unavailable hours	0	0	0	0	0	0	0	0
Fault exposure hours	0	0	0	0	0	0	0	0
Effective Reset hours	0	0	0	0	0	0	0	0
Required hours	2160.00	2184.00	2208.00	2209.00	2160.00	1731.15	2208.00	2209.00
<b>Train 2</b>								
Planned unavailable hours	0	6.00	0	0	1.50	1.13	7.60	0
Unplanned unavailable hours	0	0	0	0	0	0	0	0
Fault exposure hours	0	0	0	0	0	0	0	0
Effective Reset hours	0	0	0	0	0	0	0	0
Required hours	2160.00	2184.00	2208.00	2209.00	2160.00	1731.15	2208.00	2209.00
<b>Train 3</b>								
Planned unavailable hours	11.67	0	0	9.00	21.80	5.57	19.50	0
Unplanned unavailable hours	0	1.20	0	0	0	0	0	27.50
Fault exposure hours	0	0	0	0	0	0	0	325.80
Effective Reset hours	0	0	0	0	0	0	0	0
Required hours	2160.00	2184.00	2208.00	2209.00	2160.00	1731.15	2208.00	2209.00
Indicator value	0.2%	0.2%	0.1%	0.2%	0.2%	0.1%	0.2%	0.7%

Licensee Comments: none

### Safety System Unavailability, Residual Heat Removal System



Thresholds: White > 1.5% Yellow > 5.0% Red > 10.0%

#### Notes

Safety System Unavailability, Residual Heat Removal System	1Q/02	2Q/02	3Q/02	4Q/02	1Q/03	2Q/03	3Q/03	4Q/03
<b>Train 1</b>								
Planned unavailable hours	19.28	3.99	3.40	8.58	3.82	15.05	22.10	7.40
Unplanned unavailable hours	0	0	0	0	0	0	0	0
Fault exposure hours	0	0	0	0	0	0	0	0
Effective Reset hours	0	0	0	0	0	0	0	0
Required hours	2160.00	2184.00	2208.00	2209.00	2160.00	2097.50	2208.00	2209.00
<b>Train 2</b>								
Planned unavailable hours	4.40	14.97	0	1.82	28.20	3.47	9.90	10.80
Unplanned unavailable hours	0	0	0	0	0	0	0	0
Fault exposure hours	0	0	0	0	0	0	0	0
Effective Reset hours	0	0	0	0	0	0	0	0
Required hours	2160.00	2184.00	2208.00	2209.00	2160.00	2097.50	2208.00	2209.00
Indicator value	0.3%	0.3%	0.3%	0.3%	0.4%	0.4%	0.5%	0.5%

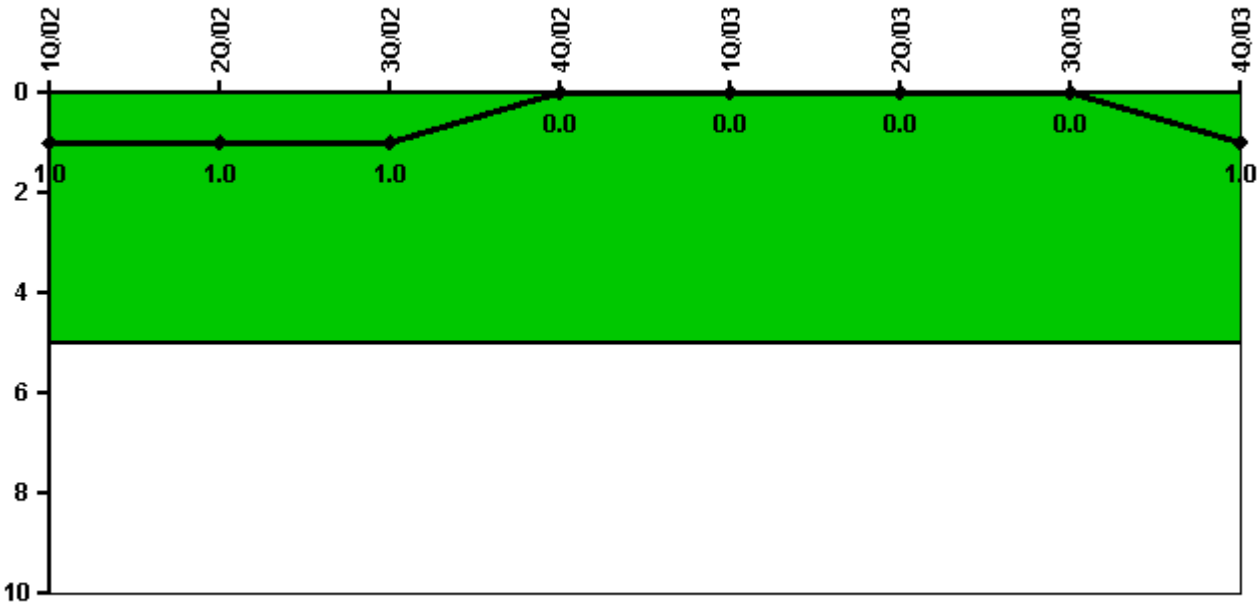
Licensee Comments:

4Q/01: The 3Q 2001 report for Residual Heat Removal (RHR) system included a note that stated that an investigation was in progress that may lead to additional unavailable hours being identified. The investigation resulted in LER 01-03-00 "1A-SA Residual Heat Removal Suction Line Debris" dated 11/27/01. This condition is

considered to be a historical design issue.

3Q/01: An investigation is currently underway that may require a revision to the hours reported for 1A-SA RHR Train for the current and previous quarters. Correction submitted with March data: Added 4.7 additional planned unavailability hours for Train 1 for July 2001 due to MOV preventive maintenance on the CCW system.

### Safety System Functional Failures (PWR)



Thresholds: White > 5.0

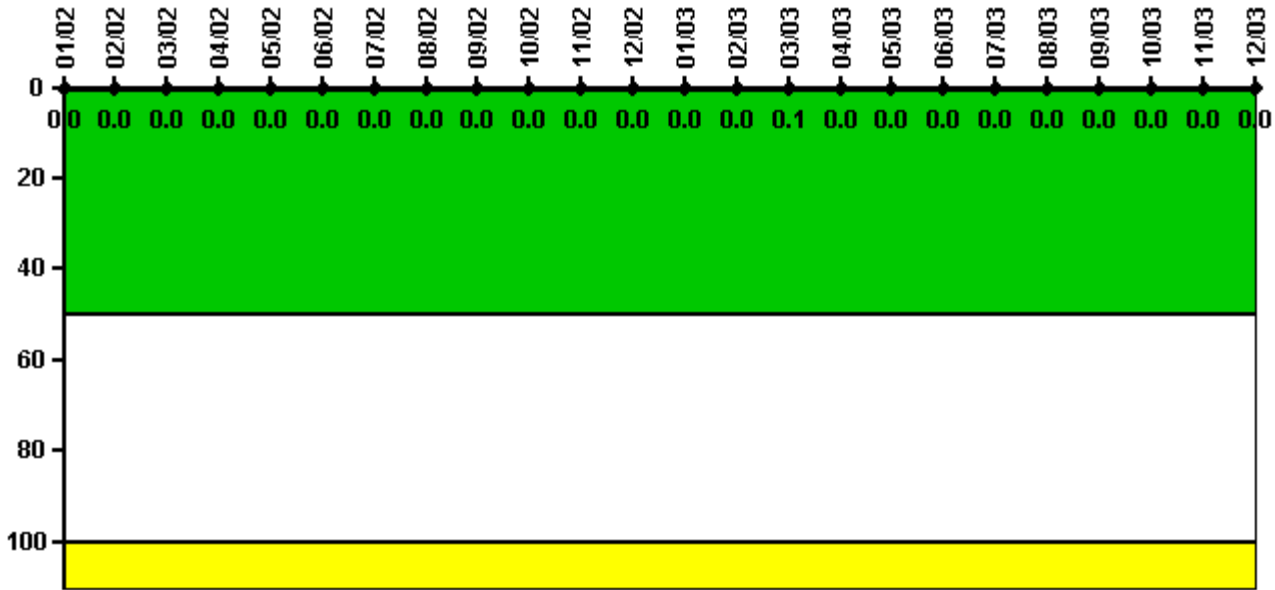
#### Notes

Safety System Functional Failures (PWR)	1Q/02	2Q/02	3Q/02	4Q/02	1Q/03	2Q/03	3Q/03	4Q/03
Safety System Functional Failures	0	0	0	0	0	0	0	1
Indicator value	1	1	1	0	0	0	0	1

Licensee Comments: none



### Reactor Coolant System Activity



Thresholds: White > 50.0 Yellow > 100.0

#### Notes

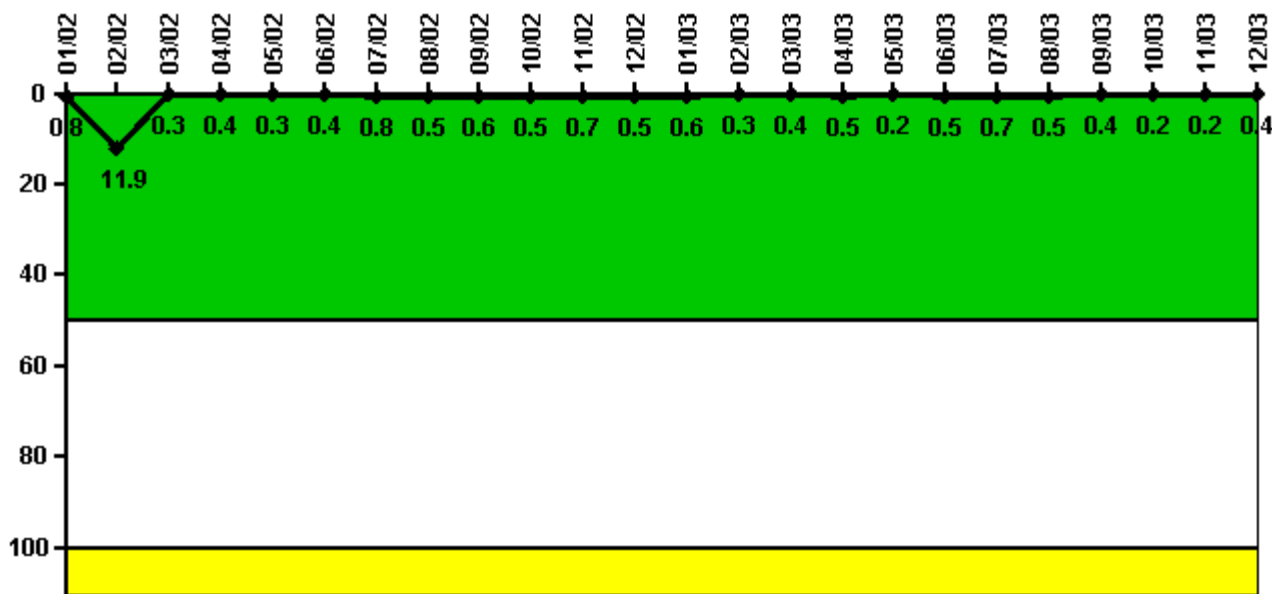
Reactor Coolant System Activity	1/02	2/02	3/02	4/02	5/02	6/02	7/02	8/02	9/02	10/02	11/02	12/02
Maximum activity	0.000126	0.000197	0.000185	0.000241	0.000157	0.000212	0.000160	0.000165	0.000355	0.000189	0.000181	0.000187
Technical specification limit	1.0	1.0	1.0	1.0	1.0	1.0	1.0	1.0	1.0	1.0	1.0	1.0
Indicator value	0	0	0	0	0	0	0	0	0	0	0	0

Reactor Coolant System Activity	1/03	2/03	3/03	4/03	5/03	6/03	7/03	8/03	9/03	10/03	11/03	12/03
Maximum activity	0.000194	0.000199	0.000732	0.000208	0.000072	0.000086	0.000092	0.000103	0.000100	0.000173	0.000099	0.000103
Technical specification limit	1.0	1.0	1.0	1.0	1.0	1.0	1.0	1.0	1.0	1.0	1.0	1.0
Indicator value	0	0	0.1	0	0	0	0	0	0	0	0	0

Licensee Comments: none

### Reactor Coolant System Leakage



Thresholds: White > 50.0 Yellow > 100.0

**Notes**

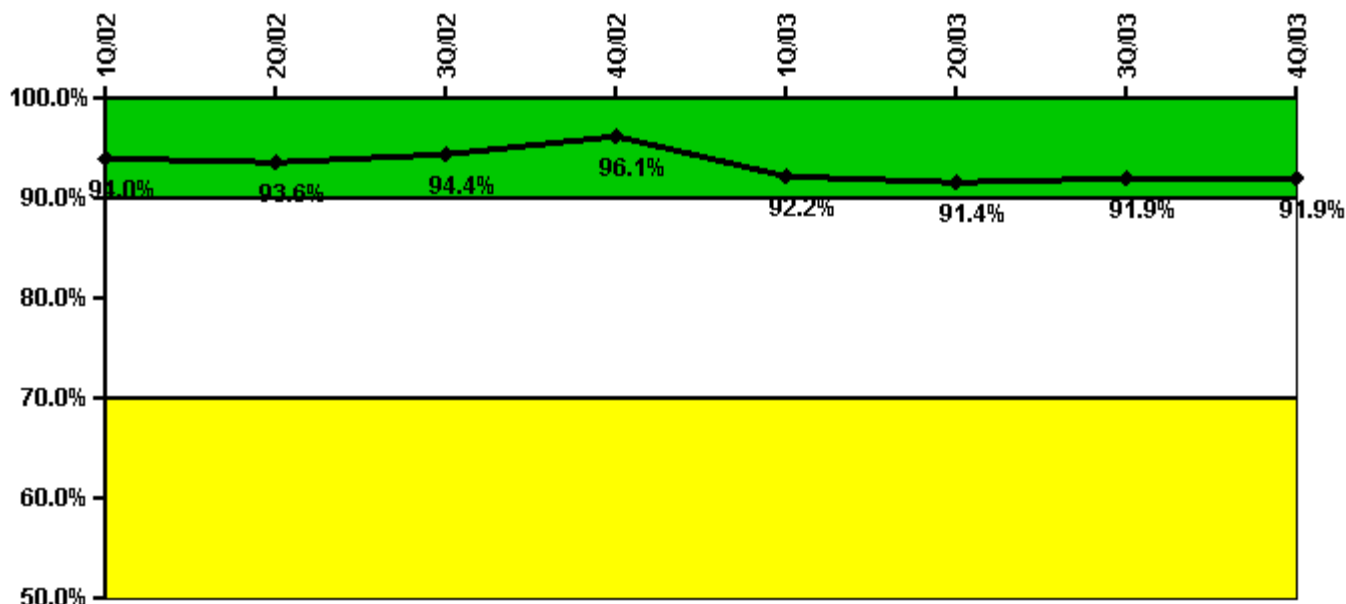
Reactor Coolant System Leakage	1/02	2/02	3/02	4/02	5/02	6/02	7/02	8/02	9/02	10/02	11/02	12/02
Maximum leakage	0.080	1.190	0.030	0.040	0.030	0.040	0.080	0.050	0.060	0.050	0.070	0.050
Technical specification limit	10.0	10.0	10.0	10.0	10.0	10.0	10.0	10.0	10.0	10.0	10.0	10.0
Indicator value	0.8	11.9	0.3	0.4	0.3	0.4	0.8	0.5	0.6	0.5	0.7	0.5

Reactor Coolant System Leakage	1/03	2/03	3/03	4/03	5/03	6/03	7/03	8/03	9/03	10/03	11/03	12/03
Maximum leakage	0.060	0.030	0.040	0.050	0.020	0.050	0.070	0.050	0.040	0.020	0.020	0.040
Technical specification limit	10.0	10.0	10.0	10.0	10.0	10.0	10.0	10.0	10.0	10.0	10.0	10.0
Indicator value	0.6	0.3	0.4	0.5	0.2	0.5	0.7	0.5	0.4	0.2	0.2	0.4

Licensee Comments: none

### Drill/Exercise Performance



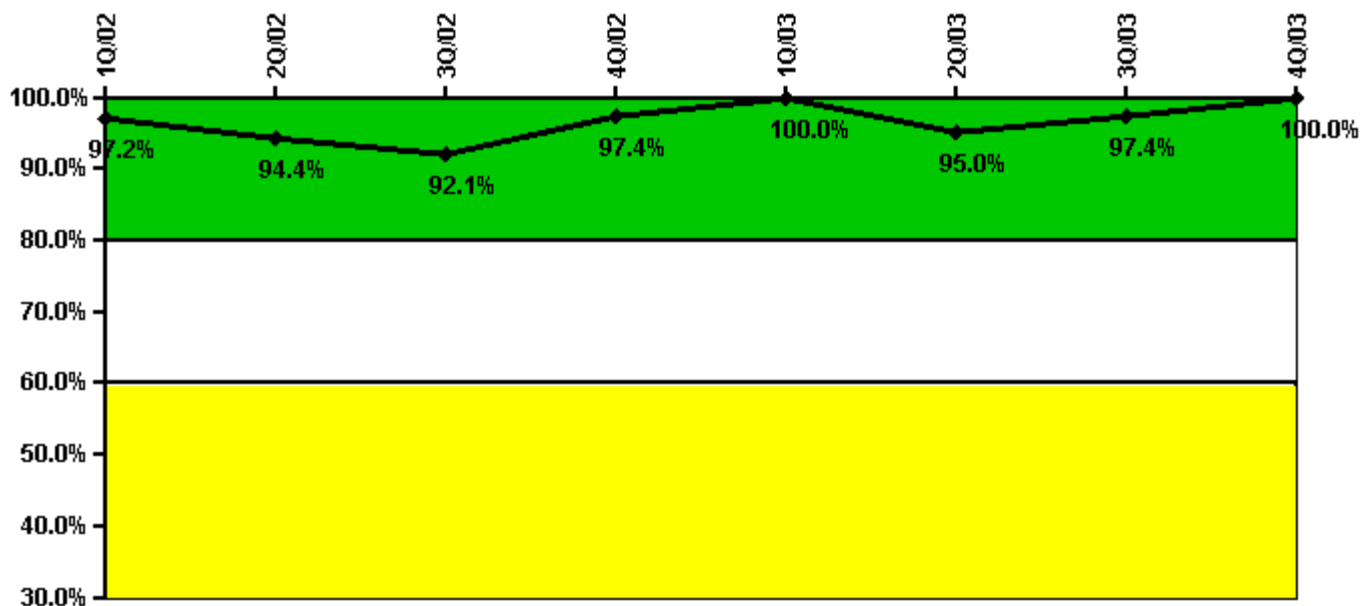
Thresholds: White < 90.0% Yellow < 70.0%

#### Notes

Drill/Exercise Performance	1Q/02	2Q/02	3Q/02	4Q/02	1Q/03	2Q/03	3Q/03	4Q/03
Successful opportunities	52.0	10.0	18.0	26.0	63.0	37.0	20.0	23.0
Total opportunities	57.0	10.0	18.0	28.0	73.0	40.0	20.0	25.0
Indicator value	94.0%	93.6%	94.4%	96.1%	92.2%	91.4%	91.9%	91.9%

Licensee Comments: none

### ERO Drill Participation



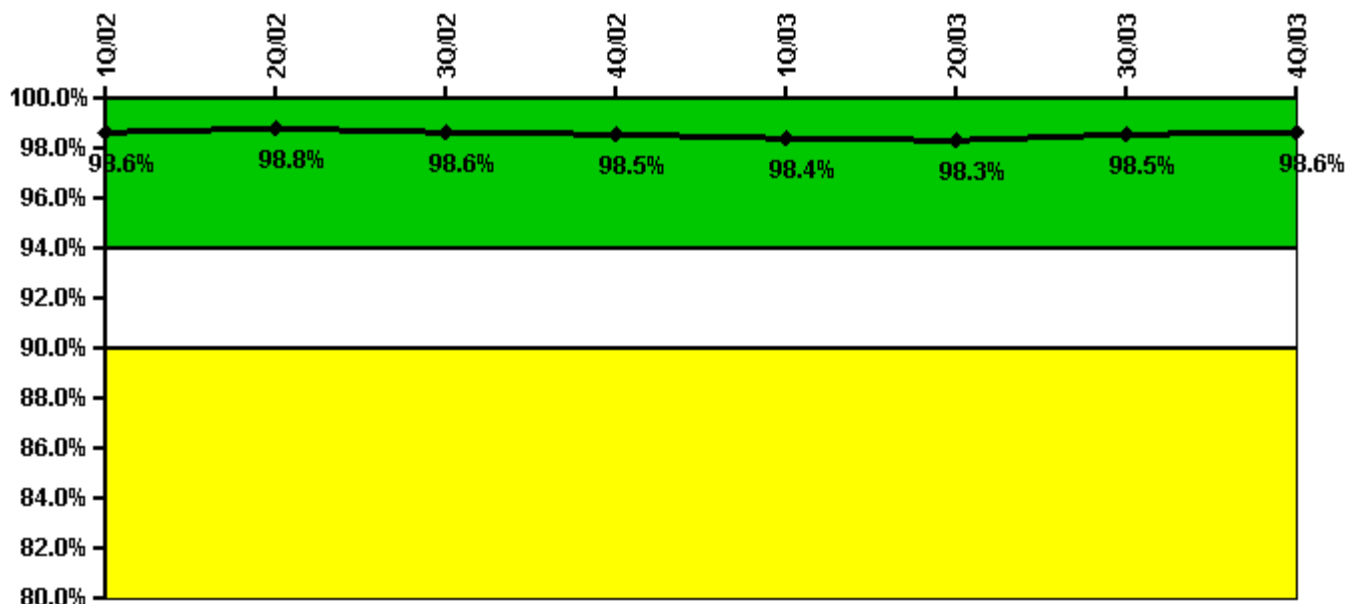
Thresholds: White < 80.0% Yellow < 60.0%

#### Notes

ERO Drill Participation	1Q/02	2Q/02	3Q/02	4Q/02	1Q/03	2Q/03	3Q/03	4Q/03
Participating Key personnel	35.0	34.0	35.0	38.0	37.0	38.0	38.0	36.0
Total Key personnel	36.0	36.0	38.0	39.0	37.0	40.0	39.0	36.0
Indicator value	97.2%	94.4%	92.1%	97.4%	100.0%	95.0%	97.4%	100.0%

Licensee Comments: none

### Alert & Notification System



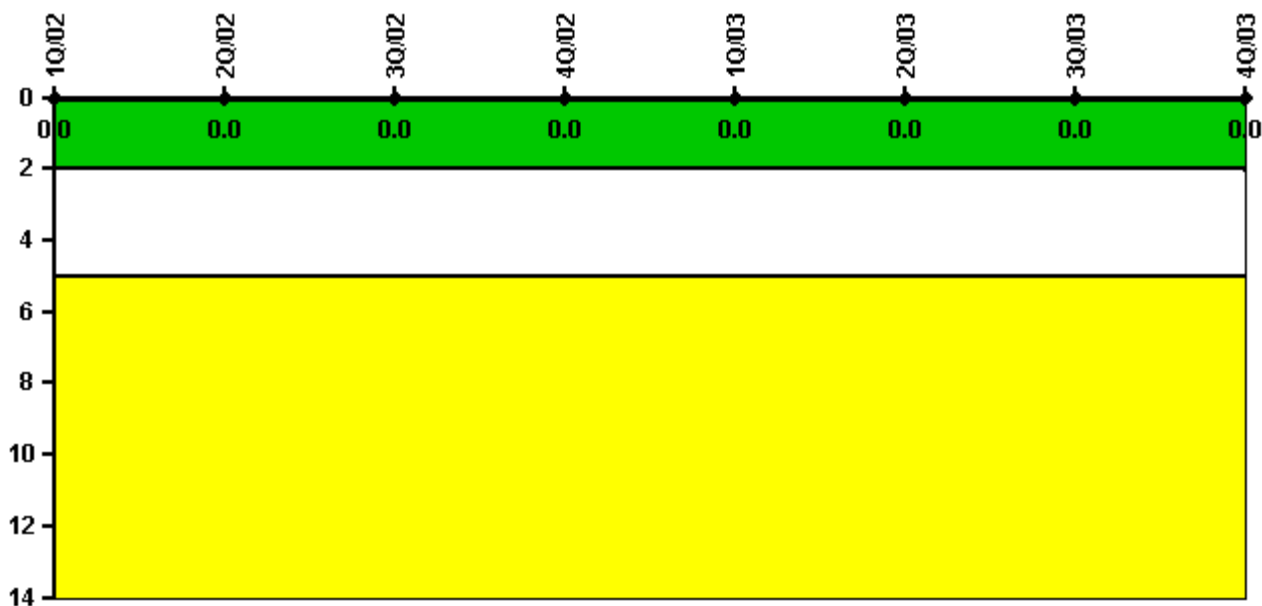
Thresholds: White < 94.0% Yellow < 90.0%

#### Notes

Alert & Notification System	1Q/02	2Q/02	3Q/02	4Q/02	1Q/03	2Q/03	3Q/03	4Q/03
Successful siren-tests	642	564	708	640	558	643	633	642
Total sirens-tests	648	567	729	648	567	648	648	648
Indicator value	98.6%	98.8%	98.6%	98.5%	98.4%	98.3%	98.5%	98.6%

Licensee Comments: none

### Occupational Exposure Control Effectiveness



Thresholds: White > 2.0 Yellow > 5.0

#### Notes

Occupational Exposure Control Effectiveness	1Q/02	2Q/02	3Q/02	4Q/02	1Q/03	2Q/03	3Q/03	4Q/03
High radiation area occurrences	0	0	0	0	0	0	0	0
Very high radiation area occurrences	0	0	0	0	0	0	0	0
Unintended exposure occurrences	0	0	0	0	0	0	0	0
Indicator value	0	0	0	0	0	0	0	0

Licensee Comments: none

### RETS/ODCM Radiological Effluent



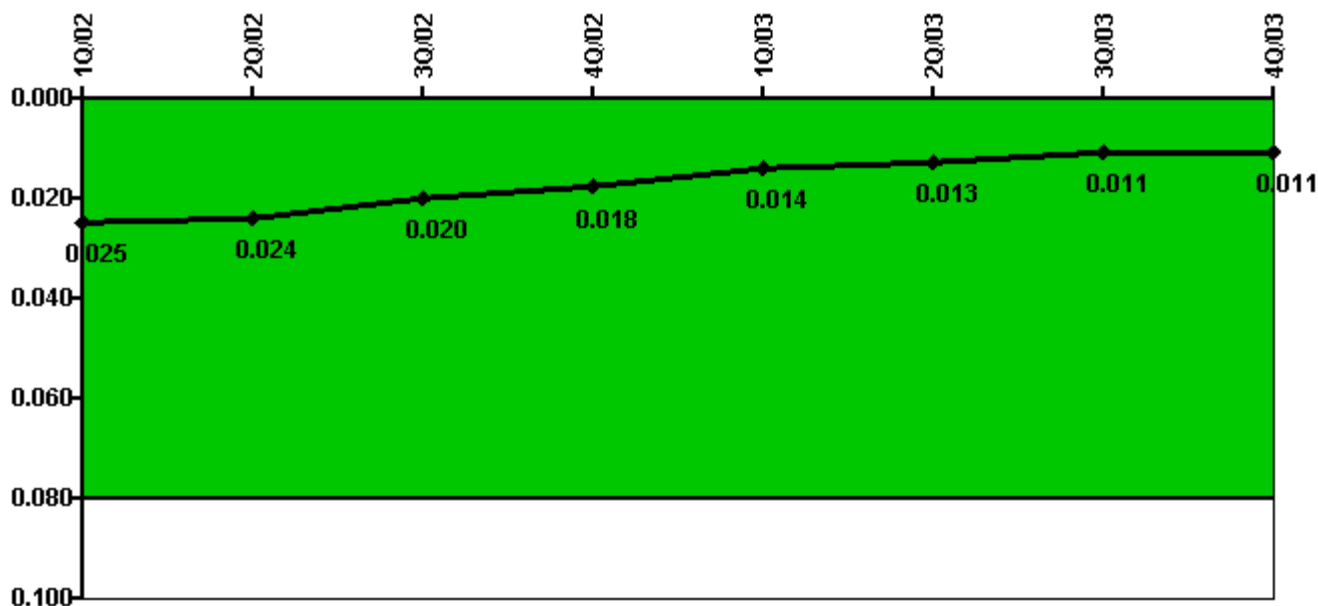
Thresholds: White > 1.0 Yellow > 3.0

#### Notes

RETS/ODCM Radiological Effluent	1Q/02	2Q/02	3Q/02	4Q/02	1Q/03	2Q/03	3Q/03	4Q/03
RETS/ODCM occurrences	0	0	0	0	0	0	0	0
Indicator value	0	0	0	0	0	0	0	0

Licensee Comments: none

### Protected Area Security Performance Index



Thresholds: White > 0.080

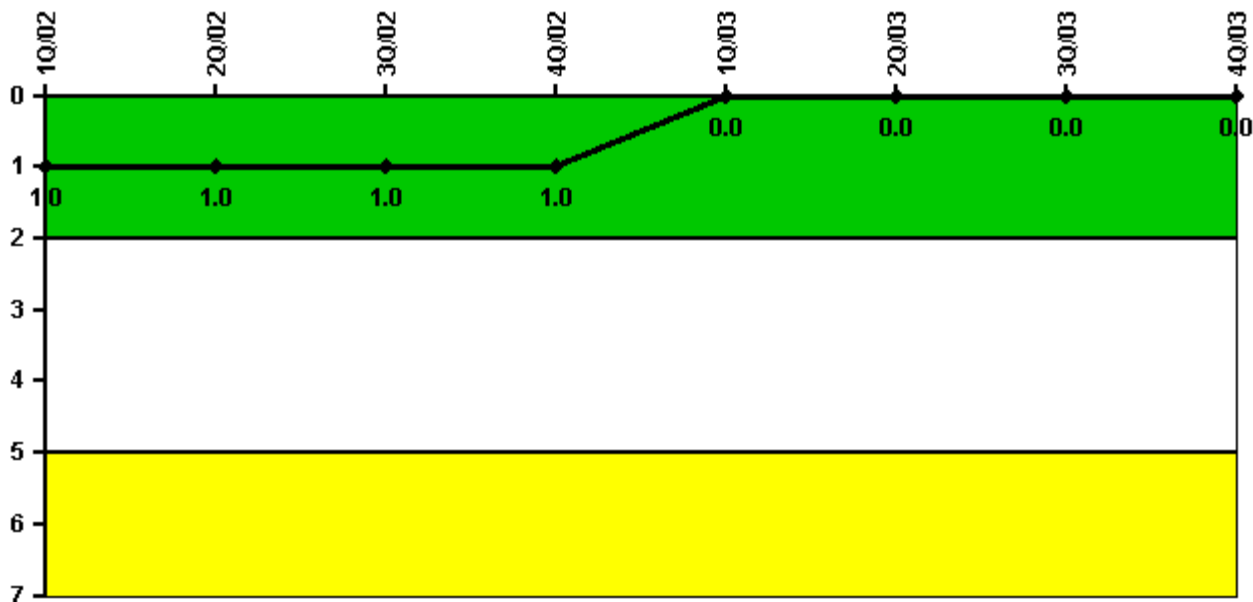
#### Notes

Protected Area Security Performance Index	1Q/02	2Q/02	3Q/02	4Q/02	1Q/03	2Q/03	3Q/03	4Q/03
IDS compensatory hours	353.08	184.08	229.30	133.90	77.00	144.61	127.39	143.58
CCTV compensatory hours	0	3.1	0	5.3	18.8	0	0	0
IDS normalization factor	2.85	2.85	2.85	2.85	2.85	2.85	2.85	2.85
CCTV normalization factor	1.4	1.4	1.4	1.4	1.4	1.4	1.4	1.4
Index Value	0.025	0.024	0.020	0.018	0.014	0.013	0.011	0.011

Licensee Comments: none



### Personnel Screening Program



Thresholds: White > 2.0 Yellow > 5.0

#### Notes

Personnel Screening Program	1Q/02	2Q/02	3Q/02	4Q/02	1Q/03	2Q/03	3Q/03	4Q/03
Program failures	1	0	0	0	0	0	0	0
Indicator value	1	1	1	1	0	0	0	0

Licensee Comments: none

### FFD/Personnel Reliability



Thresholds: White > 2.0 Yellow > 5.0

#### Notes

FFD/Personnel Reliability	1Q/02	2Q/02	3Q/02	4Q/02	1Q/03	2Q/03	3Q/03	4Q/03
Program Failures	0	0	0	0	0	0	0	0
Indicator value	0	0	0	0	0	0	0	0

Licensee Comments: none

▲ [PI Summary](#) | [Inspection Findings Summary](#) | [Reactor Oversight Process](#)

Last Modified: January 23, 2004