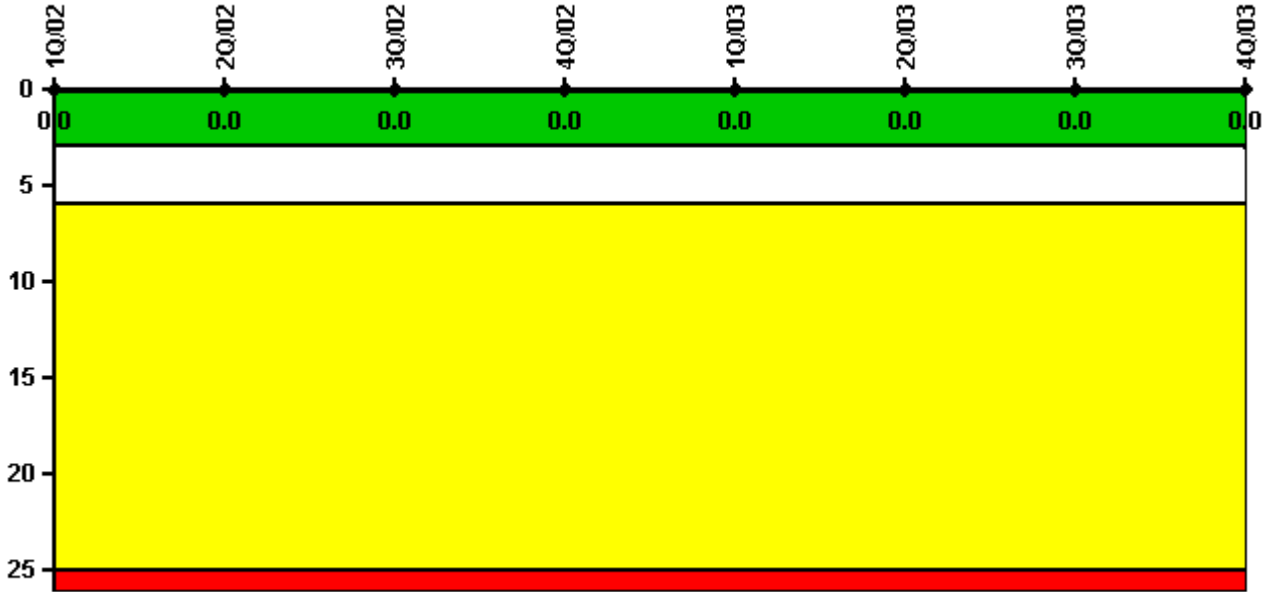


# Browns Ferry 3

## 4Q/2003 Performance Indicators

Licensee's General Comments: none

### Unplanned Scrams per 7000 Critical Hrs



Thresholds: White > 3.0 Yellow > 6.0 Red > 25.0

### Notes

Unplanned Scrams per 7000 Critical Hrs	1Q/02	2Q/02	3Q/02	4Q/02	1Q/03	2Q/03	3Q/03	4Q/03
Unplanned scrams	0	0	0	0	0	0	0	0
Critical hours	2025.0	1975.8	2208.0	2209.0	2160.0	1916.0	2191.0	2209.0
Indicator value	0	0	0	0	0	0	0	0

Licensee Comments: none

### Scrams with Loss of Normal Heat Removal



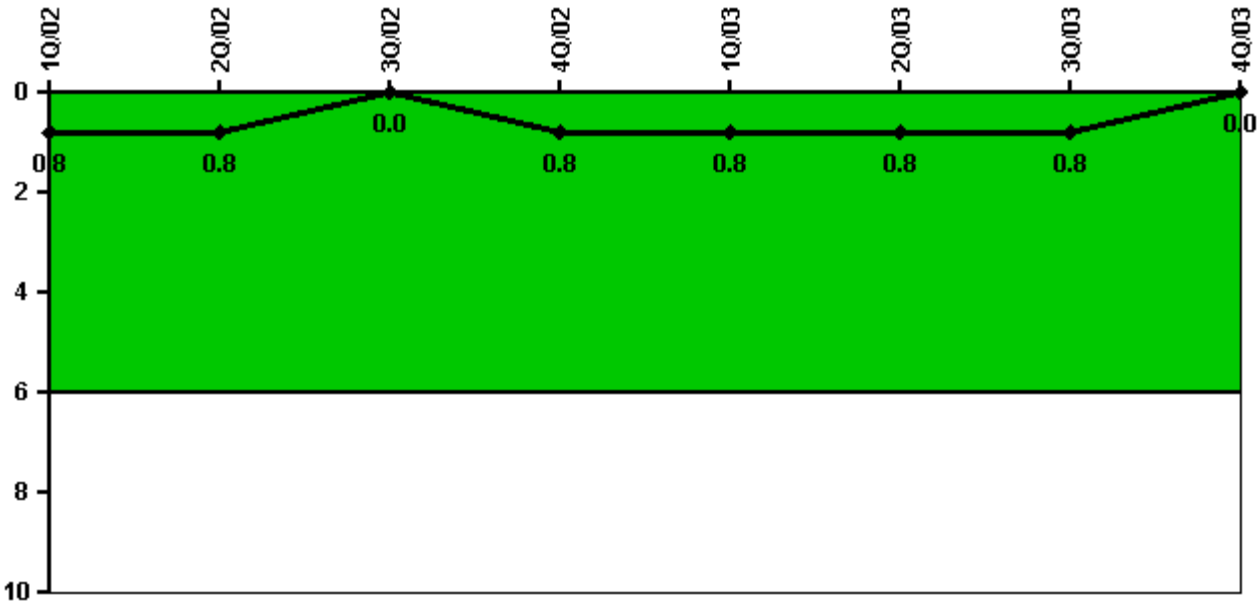
Thresholds: White > 2.0 Yellow > 10.0 Red > 20.0

#### Notes

Scrams with Loss of Normal Heat Removal	1Q/02	2Q/02	3Q/02	4Q/02	1Q/03	2Q/03	3Q/03	4Q/03
Scrams	0	0	0	0	0	0	0	0
Indicator value	0	0	0	0	0	0	0	0

Licensee Comments: none

### Unplanned Power Changes per 7000 Critical Hrs



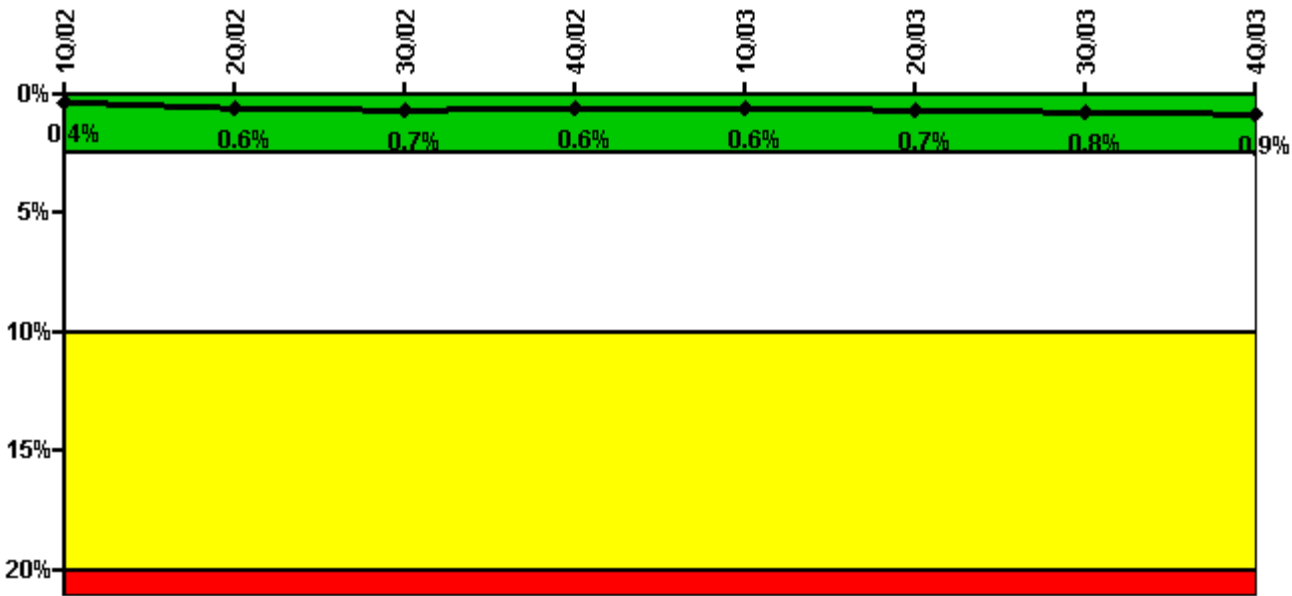
Thresholds: White > 6.0

#### Notes

Unplanned Power Changes per 7000 Critical Hrs	1Q/02	2Q/02	3Q/02	4Q/02	1Q/03	2Q/03	3Q/03	4Q/03
Unplanned power changes	0	0	0	1.0	0	0	0	0
Critical hours	2025.0	1975.8	2208.0	2209.0	2160.0	1916.0	2191.0	2209.0
Indicator value	0.8	0.8	0	0.8	0.8	0.8	0.8	0

Licensee Comments: none

### Safety System Unavailability, Emergency AC Power, >2EDG



Thresholds: White > 2.5% Yellow > 10.0% Red > 20.0%

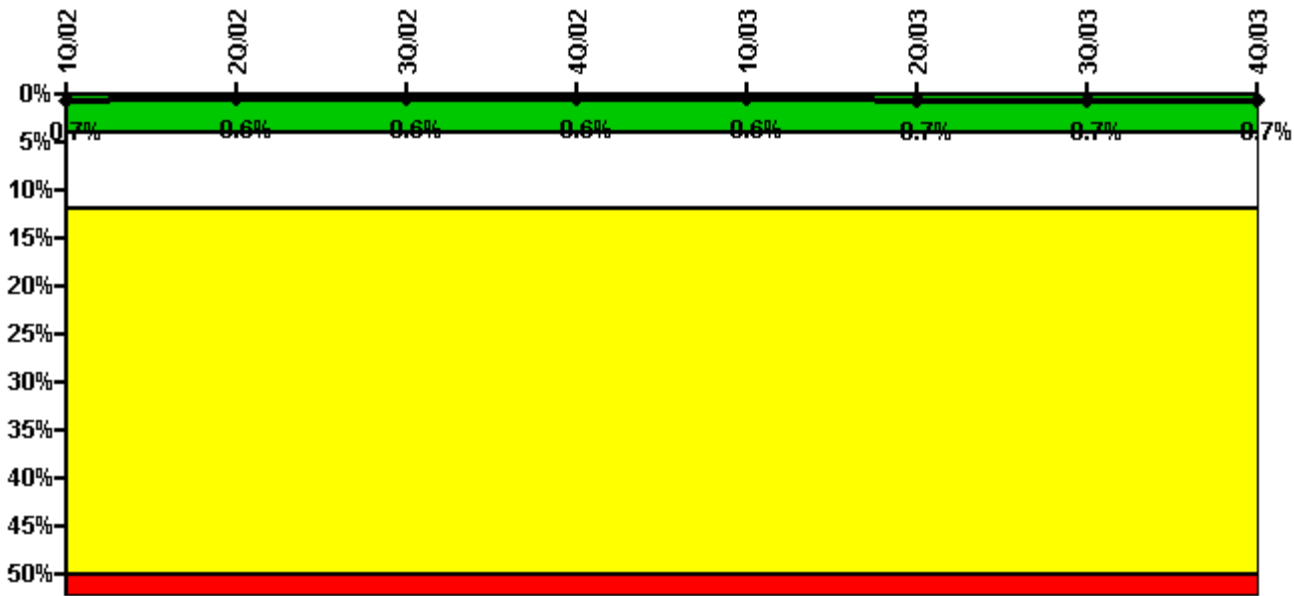
#### Notes

Safety System Unavailability, Emergency AC Power, >2EDG	1Q/02	2Q/02	3Q/02	4Q/02	1Q/03	2Q/03	3Q/03	4Q/03
<b>Train 1</b>								
Planned unavailable hours	2.42	0.85	1.78	0.95	1.52	47.44	38.97	3.83
Unplanned unavailable hours	0	43.40	0	0	0	0	35.57	0
Fault exposure hours	0	0	0	0	0	0	0	0
Effective Reset hours	0	0	0	0	0	0	0	0
Required hours	2160.00	2183.00	2208.00	2209.00	2160.00	2183.00	2208.00	2209.00
<b>Train 2</b>								
Planned unavailable hours	2.26	0.74	2.14	0.71	5.29	12.80	39.40	37.85
Unplanned unavailable hours	0.05	0	0	0	0	0	0	0
Fault exposure hours	0	0	0	0	0	0	0	0
Effective Reset hours	0	0	0	0	0	0	0	0
Required hours	2160.00	2183.00	2208.00	2209.00	2160.00	2183.00	2208.00	2209.00
<b>Train 3</b>								
Planned unavailable hours	2.08	1.37	0.53	1.20	82.33	7.52	11.02	1.02
Unplanned unavailable hours	0	0	1.65	0	0	0	0	0
Fault exposure hours	0	0	349.15	0	0	0	0	0
Effective Reset hours	0	0	0	0	0	0	0	0
Required hours	2160.00	2183.00	2208.00	2209.00	2160.00	2183.00	2208.00	2209.00
<b>Train 4</b>								
Planned unavailable hours	2.41	1.51	6.81	1.02	14.89	59.27	6.19	22.61
Unplanned unavailable hours	0	40.22	0	0	0	0	57.42	0
Fault exposure hours	0	0	0	0	0	0	0	0
Effective Reset hours	0	0	0	0	0	0	0	0
Required hours	2160.00	2183.00	2208.00	2209.00	2160.00	2183.00	2208.00	2209.00

<b>Train 5</b>								
Planned unavailable hours	1.82	15.76	1.23	1.73	6.16	9.28	1.07	67.80
Unplanned unavailable hours	0	0	0	0	27.68	0	0	0
Fault exposure hours	0	0	0	0	0	0	0	0
Effective Reset hours	0	0	0	0	0	0	0	0
Required hours	2160.00	2183.00	2208.00	2209.00	2160.00	2183.00	2208.00	2209.00
<b>Train 6</b>								
Planned unavailable hours	1.92	1.46	1.33	1.95	4.89	1.56	6.30	2.09
Unplanned unavailable hours	0	1.25	0	0	0	0	0	0
Fault exposure hours	0	334.42	0	0	0	0	0	0
Effective Reset hours	0	0	0	0	0	0	0	0
Required hours	2160.00	2183.00	2208.00	2209.00	2160.00	2183.00	2208.00	2209.00
<b>Train 7</b>								
Planned unavailable hours	10.07	41.16	1.27	8.05	1.55	37.81	4.44	2.02
Unplanned unavailable hours	0	0	0	0	0	0	0	0
Fault exposure hours	0	0	0	0	0	0	0	0
Effective Reset hours	0	0	0	0	0	0	0	0
Required hours	2160.00	2183.00	2208.00	2209.00	2160.00	2183.00	2208.00	2209.00
<b>Train 8</b>								
Planned unavailable hours	2.45	1.57	1.13	0.98	14.01	10.89	3.86	1.29
Unplanned unavailable hours	0	0	0	0	0	34.08	0	0
Fault exposure hours	0	0	0	0	0	0	0	0
Effective Reset hours	0	0	0	0	0	0	0	0
Required hours	2160.00	2183.00	2208.00	2209.00	2160.00	2183.00	2208.00	2209.00
<b>Indicator value</b>	<b>0.4%</b>	<b>0.6%</b>	<b>0.7%</b>	<b>0.6%</b>	<b>0.6%</b>	<b>0.7%</b>	<b>0.8%</b>	<b>0.9%</b>

Licensee Comments: none

### Safety System Unavailability, High Pressure Injection System (HPCI)



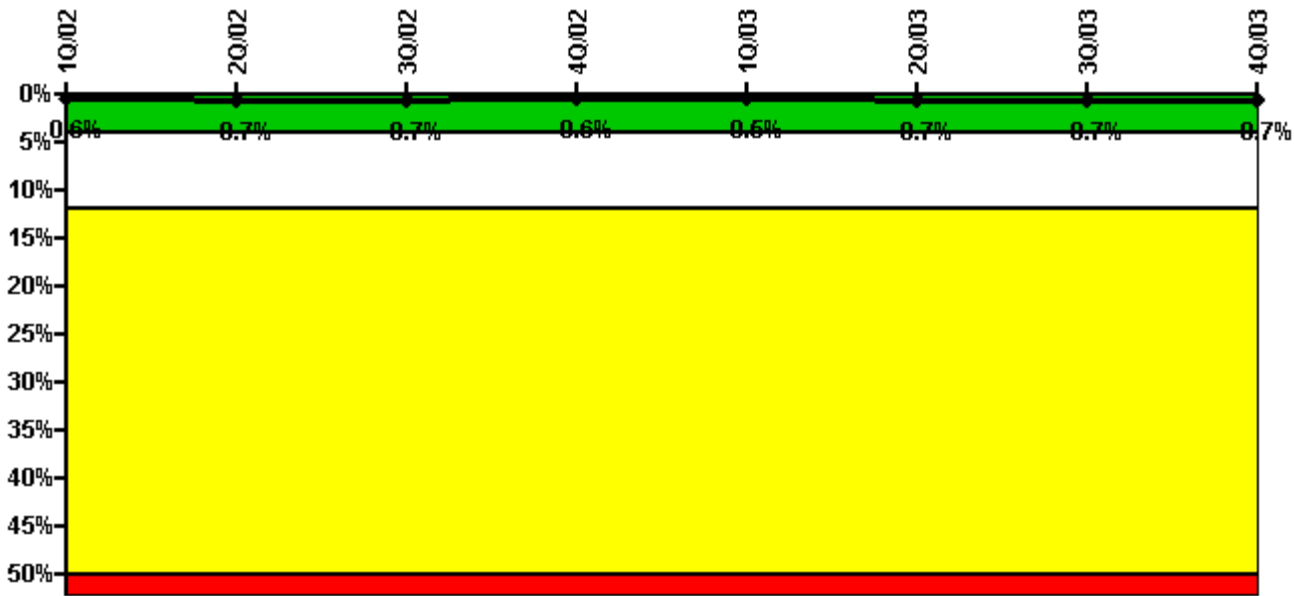
Thresholds: White > 4.0% Yellow > 12.0% Red > 50.0%

#### Notes

Safety System Unavailability, High Pressure Injection System (HPCI)	1Q/02	2Q/02	3Q/02	4Q/02	1Q/03	2Q/03	3Q/03	4Q/03
Train 1								
Planned unavailable hours	65.45	16.91	0	15.78	0	0	11.23	0
Unplanned unavailable hours	49.93	0	0	2.42	0	14.25	0	0
Fault exposure hours	0	0	0	0	0	0	0	0
Effective Reset hours	0	0	0	0	0	0	0	0
Required hours	2027.90	1973.30	2208.00	2209.00	2160.00	1919.30	2189.10	2209.00
Indicator value	0.7%	0.6%	0.6%	0.6%	0.6%	0.7%	0.7%	0.7%

Licensee Comments: none

### Safety System Unavailability, Heat Removal System (RCIC)



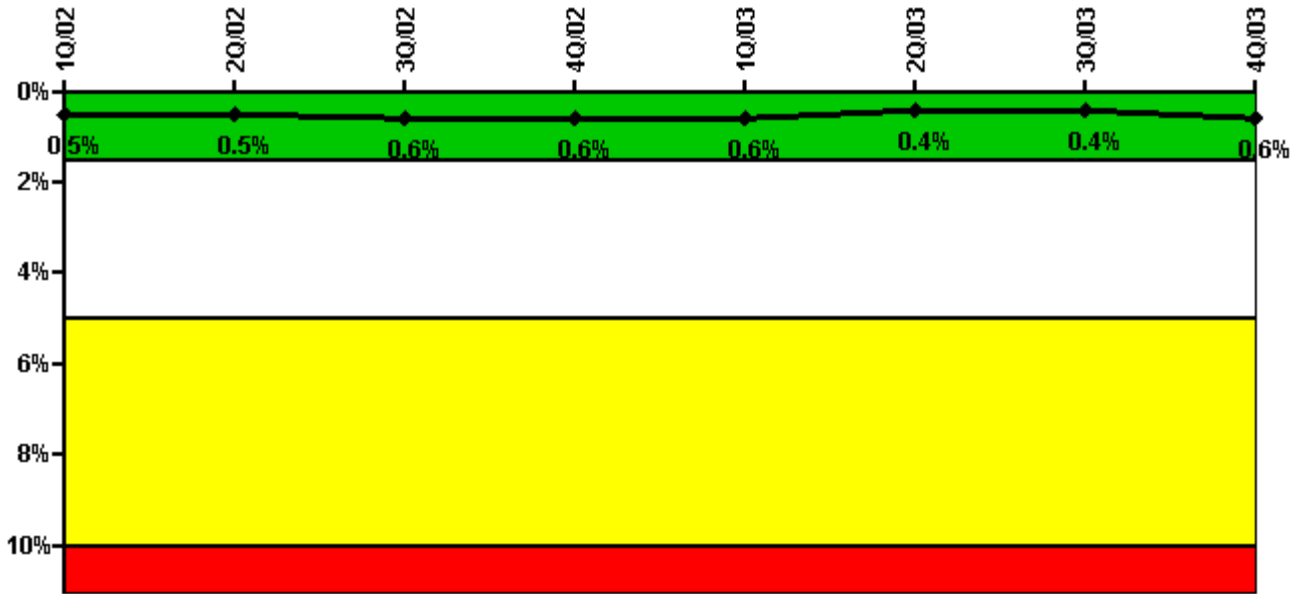
Thresholds: White > 4.0% Yellow > 12.0% Red > 50.0%

#### Notes

Safety System Unavailability, Heat Removal System (RCIC)	1Q/02	2Q/02	3Q/02	4Q/02	1Q/03	2Q/03	3Q/03	4Q/03
Train 1								
Planned unavailable hours	40.23	9.08	0.32	0.32	0.43	28.65	0.28	14.38
Unplanned unavailable hours	3.60	0	0	0	0	0	0	0
Fault exposure hours	0	0	0	0	0	0	0	0
Effective Reset hours	0	0	0	0	0	0	0	0
Required hours	2027.90	1973.30	2208.00	2209.00	2160.00	1919.30	2189.10	2209.00
Indicator value	0.6%	0.7%	0.7%	0.6%	0.5%	0.7%	0.7%	0.7%

Licensee Comments: none

### Safety System Unavailability, Residual Heat Removal System



Thresholds: White > 1.5% Yellow > 5.0% Red > 10.0%

**Notes**

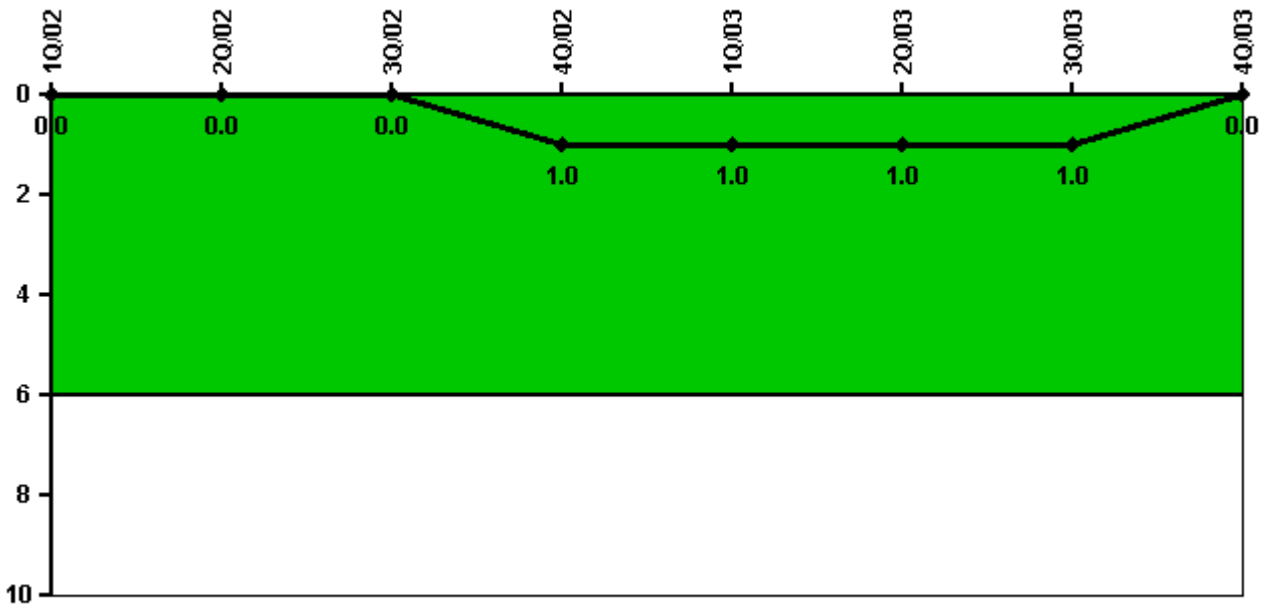
Safety System Unavailability, Residual Heat Removal System	1Q/02	2Q/02	3Q/02	4Q/02	1Q/03	2Q/03	3Q/03	4Q/03
<b>Train 1</b>								
Planned unavailable hours	10.87	0	5.63	0.33	12.45	0.15	0	0
Unplanned unavailable hours	0	0	0	0	0	0	0	0
Fault exposure hours	0	0	0	0	0	0	0	0
Effective Reset hours	0	0	0	0	0	0	0	0
Required hours	2076.00	2035.40	2208.00	2209.00	2160.00	1916.00	2194.40	2209.00
<b>Train 2</b>								
Planned unavailable hours	17.20	0	11.10	0.48	0.35	0.15	33.97	0
Unplanned unavailable hours	0.25	0	0	0	0	0	0	175.77
Fault exposure hours	0	0	0	0	0	0	0	0
Effective Reset hours	0	0	0	0	0	0	0	0
Required hours	2076.00	1998.00	2208.00	2209.00	2160.00	2046.13	2208.00	2209.00
<b>Train 3</b>								
Planned unavailable hours	0	0	5.63	27.35	5.10	0.13	0	0
Unplanned unavailable hours	0	0	0	0	0	0	0	0
Fault exposure hours	0	0	0	0	0	0	0	0
Effective Reset hours	0	0	0	0	0	0	0	0
Required hours	2076.00	2035.40	2208.00	2209.00	2160.00	1970.90	2194.40	2209.00
<b>Train 4</b>								
Planned unavailable hours	0	0	77.61	0.48	58.35	0.17	33.97	74.40
Unplanned unavailable hours	0	0	0	0	0	0	0	0
Fault exposure hours	0	0	0	0	0	0	0	0
Effective Reset hours	0	0	0	0	0	0	0	0
Required hours	2076.00	1998.00	2208.00	2209.00	2160.00	2183.00	2208.00	2209.00



Indicator value	0.5%	0.5%	0.6%	0.6%	0.6%	0.4%	0.4%	0.6%

Licensee Comments: none

### Safety System Functional Failures (BWR)



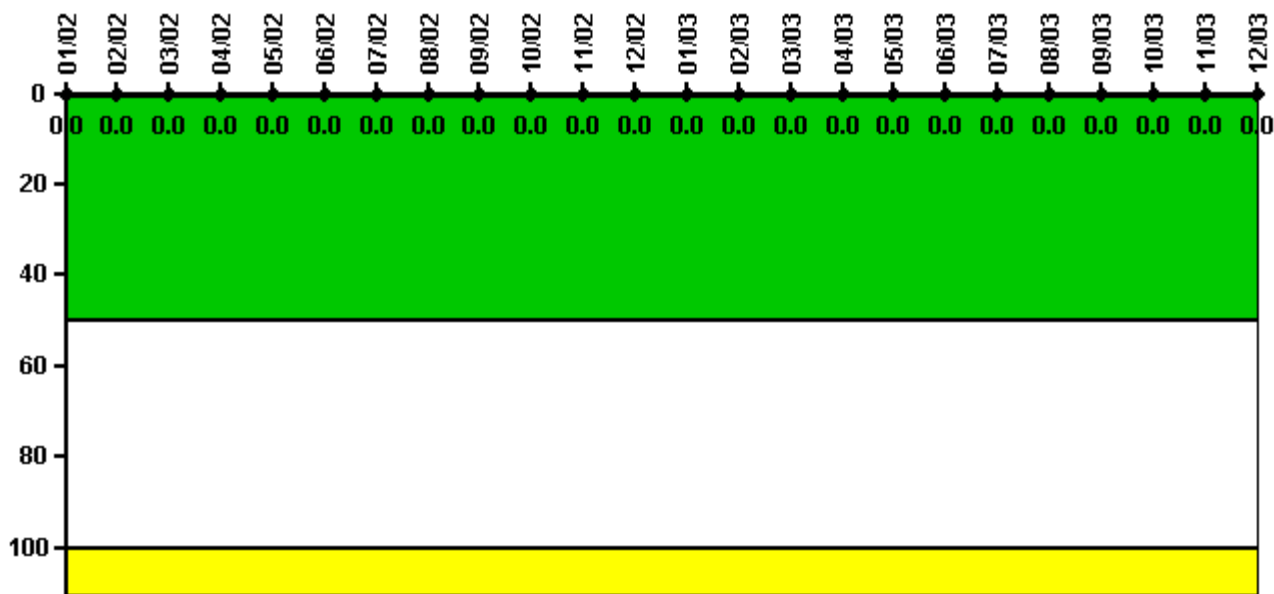
Thresholds: White > 6.0

### Notes

Safety System Functional Failures (BWR)	1Q/02	2Q/02	3Q/02	4Q/02	1Q/03	2Q/03	3Q/03	4Q/03
Safety System Functional Failures	0	0	0	1	0	0	0	0
Indicator value	0	0	0	1	1	1	1	0

Licensee Comments: none

### Reactor Coolant System Activity



Thresholds: White > 50.0 Yellow > 100.0

#### Notes

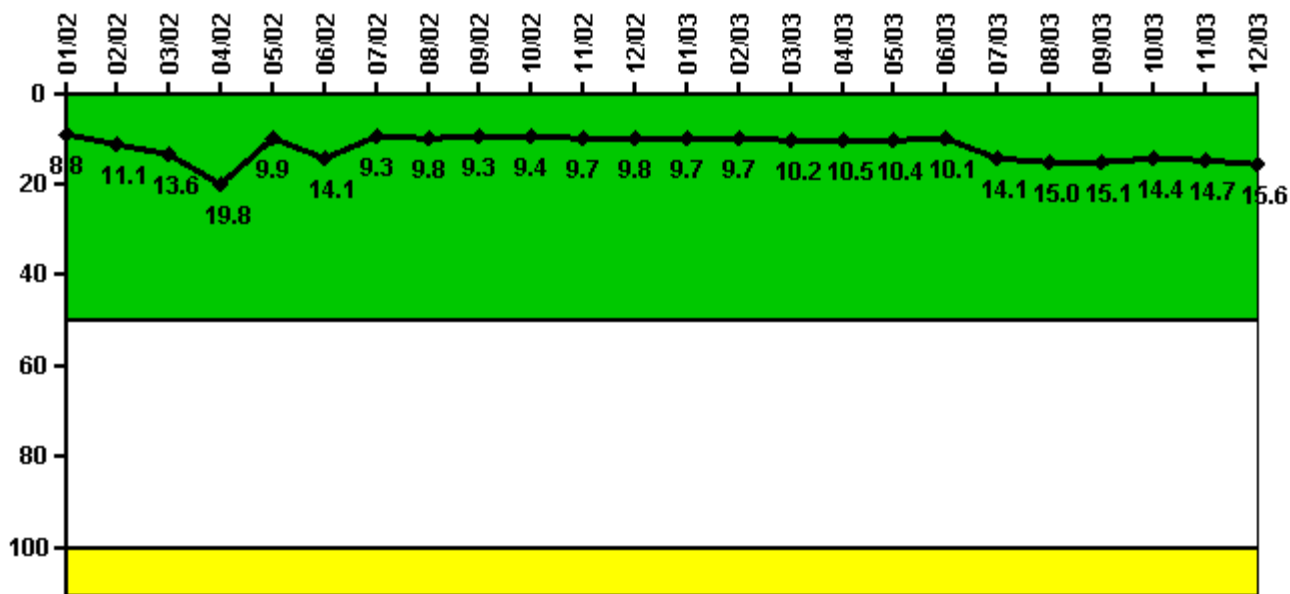
Reactor Coolant System Activity	1/02	2/02	3/02	4/02	5/02	6/02	7/02	8/02	9/02	10/02	11/02	12/02
Maximum activity	0.000148	0.000176	0.000119	0.000038	0.000073	0.000078	0.000060	0.000083	0.000192	0.000087	0.000116	0.000206
Technical specification limit	3.2	3.2	3.2	3.2	3.2	3.2	3.2	3.2	3.2	3.2	3.2	3.2
Indicator value	0	0	0	0	0	0	0	0	0	0	0	0

Reactor Coolant System Activity	1/03	2/03	3/03	4/03	5/03	6/03	7/03	8/03	9/03	10/03	11/03	12/03
Maximum activity	0.000137	0.000096	0.000134	0.000096	0.000155	0.000101	0.000135	0.000140	0.000107	0.000069	0.000121	0.000102
Technical specification limit	3.2	3.2	3.2	3.2	3.2	3.2	3.2	3.2	3.2	3.2	3.2	3.2
Indicator value	0	0	0	0	0	0	0	0	0	0	0	0

Licensee Comments: none

### Reactor Coolant System Leakage



Thresholds: White > 50.0 Yellow > 100.0

#### Notes

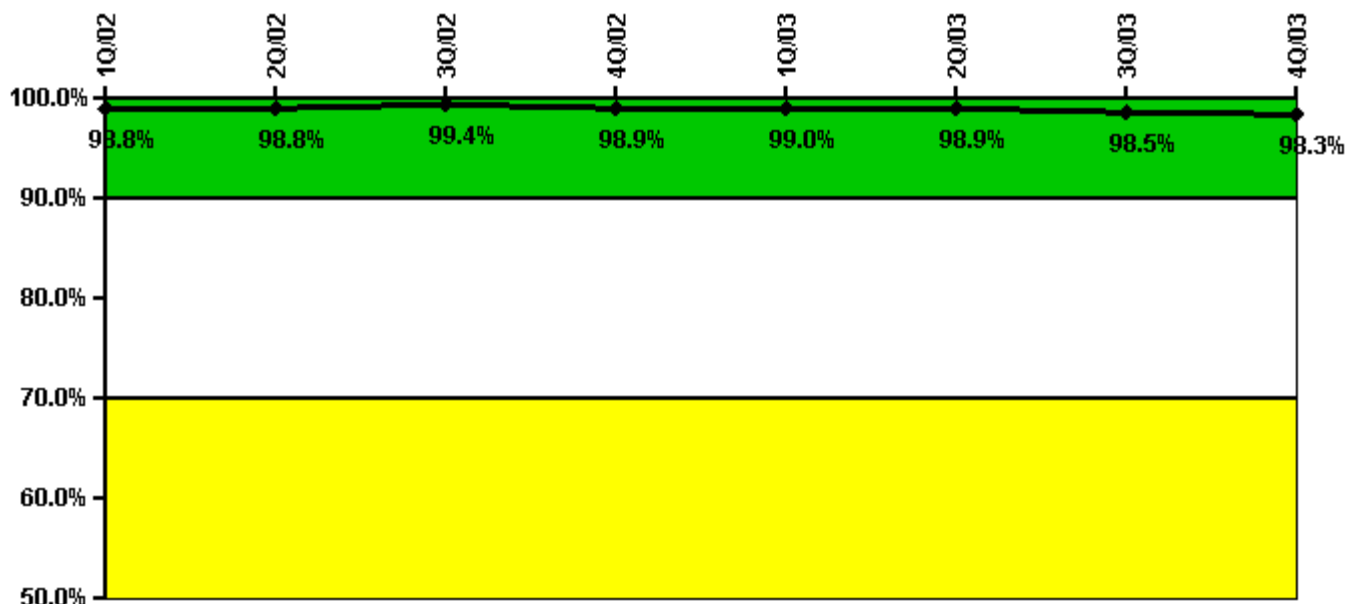
Reactor Coolant System Leakage	1/02	2/02	3/02	4/02	5/02	6/02	7/02	8/02	9/02	10/02	11/02	12/02
Maximum leakage	2.650	3.320	4.070	5.930	2.970	4.230	2.790	2.930	2.800	2.820	2.900	2.940
Technical specification limit	30.0	30.0	30.0	30.0	30.0	30.0	30.0	30.0	30.0	30.0	30.0	30.0
Indicator value	8.8	11.1	13.6	19.8	9.9	14.1	9.3	9.8	9.3	9.4	9.7	9.8

Reactor Coolant System Leakage	1/03	2/03	3/03	4/03	5/03	6/03	7/03	8/03	9/03	10/03	11/03	12/03
Maximum leakage	2.920	2.910	3.070	3.140	3.130	3.020	4.240	4.510	4.540	4.310	4.410	4.670
Technical specification limit	30.0	30.0	30.0	30.0	30.0	30.0	30.0	30.0	30.0	30.0	30.0	30.0
Indicator value	9.7	9.7	10.2	10.5	10.4	10.1	14.1	15.0	15.1	14.4	14.7	15.6

Licensee Comments: none

### Drill/Exercise Performance



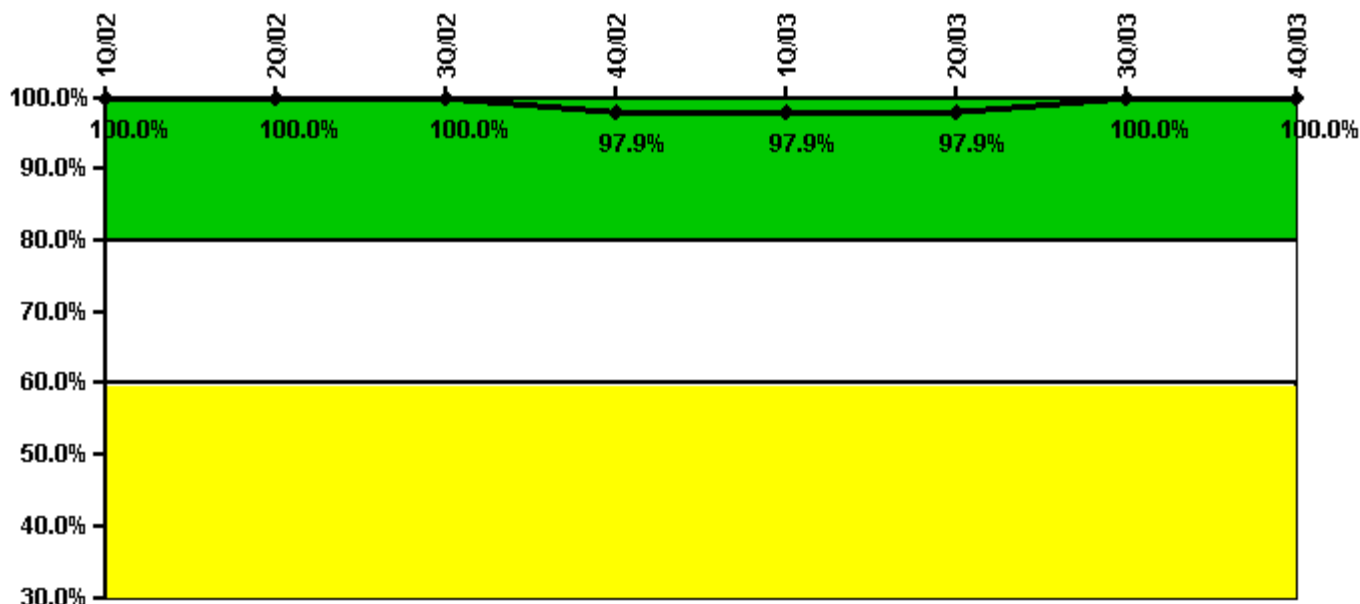
Thresholds: White < 90.0% Yellow < 70.0%

#### Notes

Drill/Exercise Performance	1Q/02	2Q/02	3Q/02	4Q/02	1Q/03	2Q/03	3Q/03	4Q/03
Successful opportunities	2.0	6.0	10.0	62.0	12.0	12.0	19.0	51.0
Total opportunities	2.0	6.0	10.0	63.0	12.0	12.0	20.0	52.0
Indicator value	98.8%	98.8%	99.4%	98.9%	99.0%	98.9%	98.5%	98.3%

Licensee Comments: none

### ERO Drill Participation



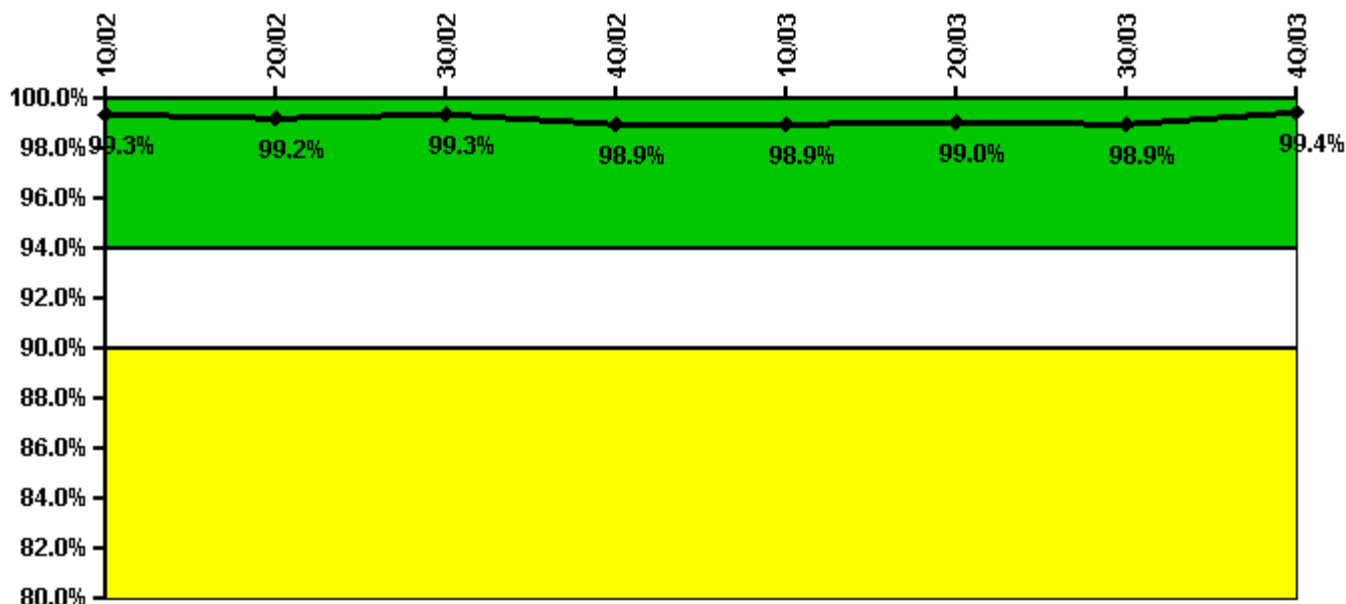
Thresholds: White < 80.0% Yellow < 60.0%

#### Notes

ERO Drill Participation	1Q/02	2Q/02	3Q/02	4Q/02	1Q/03	2Q/03	3Q/03	4Q/03
Participating Key personnel	48.0	48.0	49.0	47.0	46.0	47.0	49.0	50.0
Total Key personnel	48.0	48.0	49.0	48.0	47.0	48.0	49.0	50.0
Indicator value	100.0%	100.0%	100.0%	97.9%	97.9%	97.9%	100.0%	100.0%

Licensee Comments: none

### Alert & Notification System



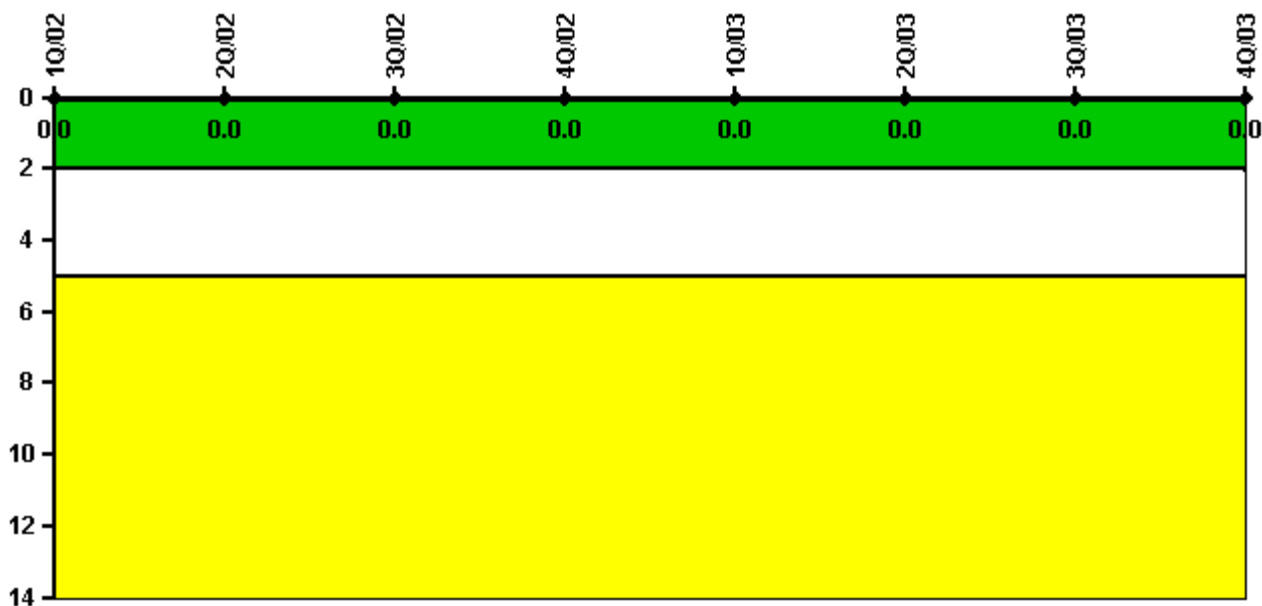
Thresholds: White < 94.0% Yellow < 90.0%

**Notes**

Alert & Notification System	1Q/02	2Q/02	3Q/02	4Q/02	1Q/03	2Q/03	3Q/03	4Q/03
Successful siren-tests	595	794	793	1083	593	995	594	1098
Total sirens-tests	600	800	800	1100	600	1000	600	1100
Indicator value	99.3%	99.2%	99.3%	98.9%	98.9%	99.0%	98.9%	99.4%

Licensee Comments: none

### Occupational Exposure Control Effectiveness



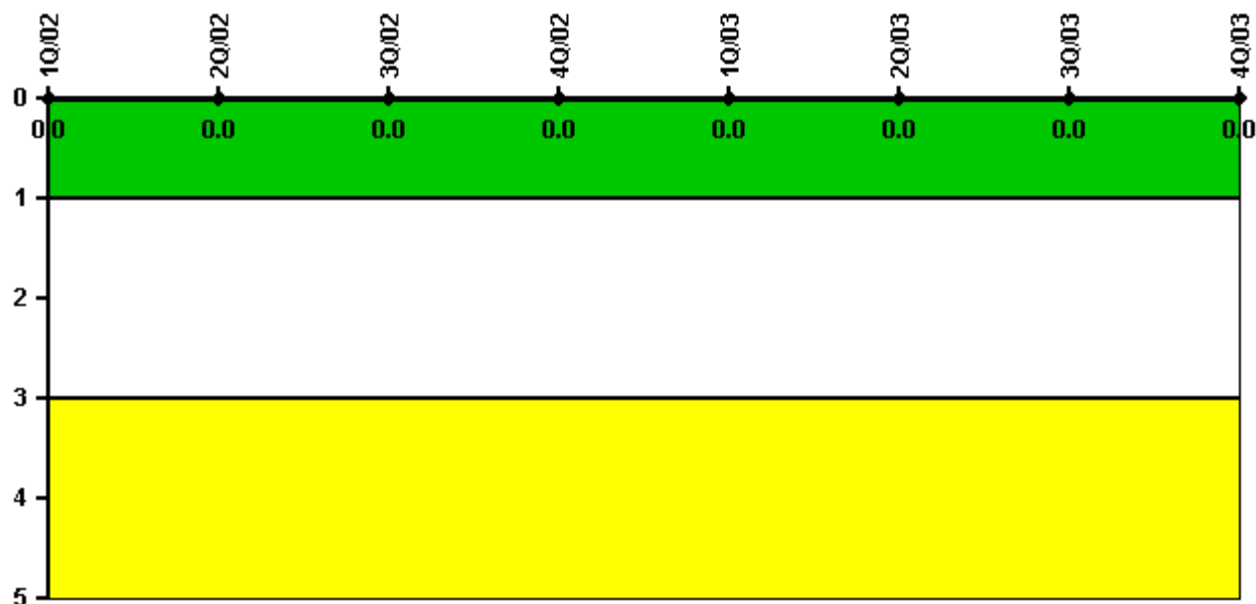
Thresholds: White > 2.0 Yellow > 5.0

#### Notes

Occupational Exposure Control Effectiveness	1Q/02	2Q/02	3Q/02	4Q/02	1Q/03	2Q/03	3Q/03	4Q/03
High radiation area occurrences	0	0	0	0	0	0	0	0
Very high radiation area occurrences	0	0	0	0	0	0	0	0
Unintended exposure occurrences	0	0	0	0	0	0	0	0
Indicator value	0	0	0	0	0	0	0	0

Licensee Comments: none

### RETS/ODCM Radiological Effluent



Thresholds: White > 1.0 Yellow > 3.0

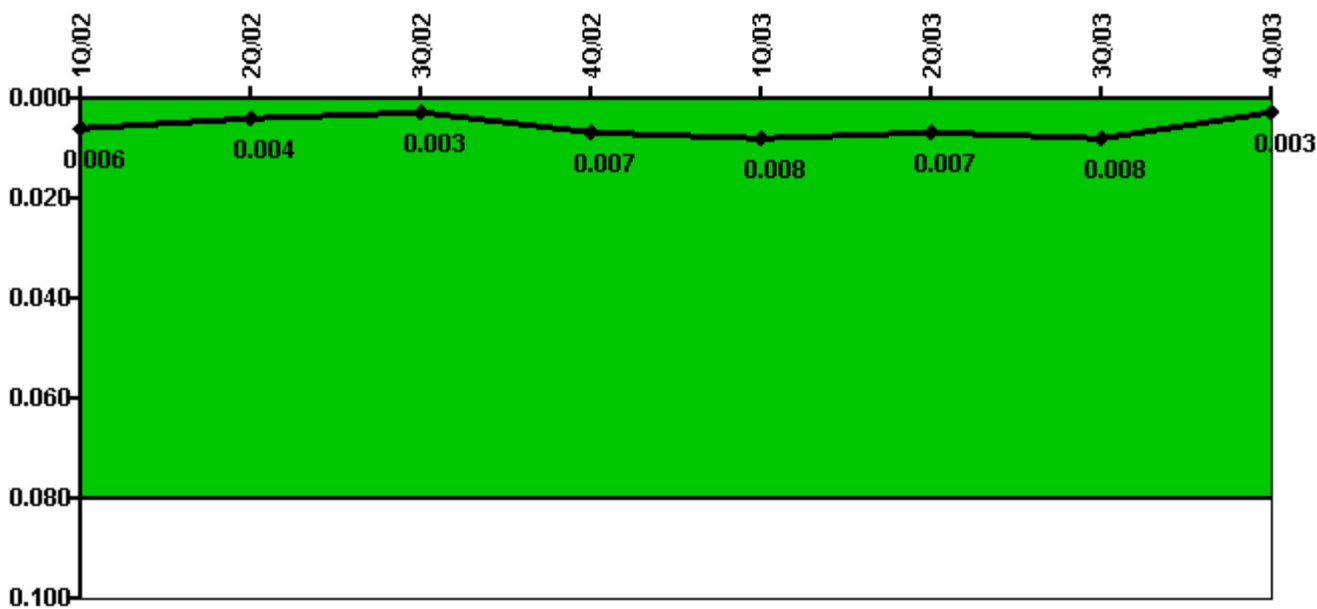
#### Notes

RETS/ODCM Radiological Effluent	1Q/02	2Q/02	3Q/02	4Q/02	1Q/03	2Q/03	3Q/03	4Q/03
RETS/ODCM occurrences	0	0	0	0	0	0	0	0
Indicator value	0	0	0	0	0	0	0	0

Licensee Comments: none



### Protected Area Security Performance Index



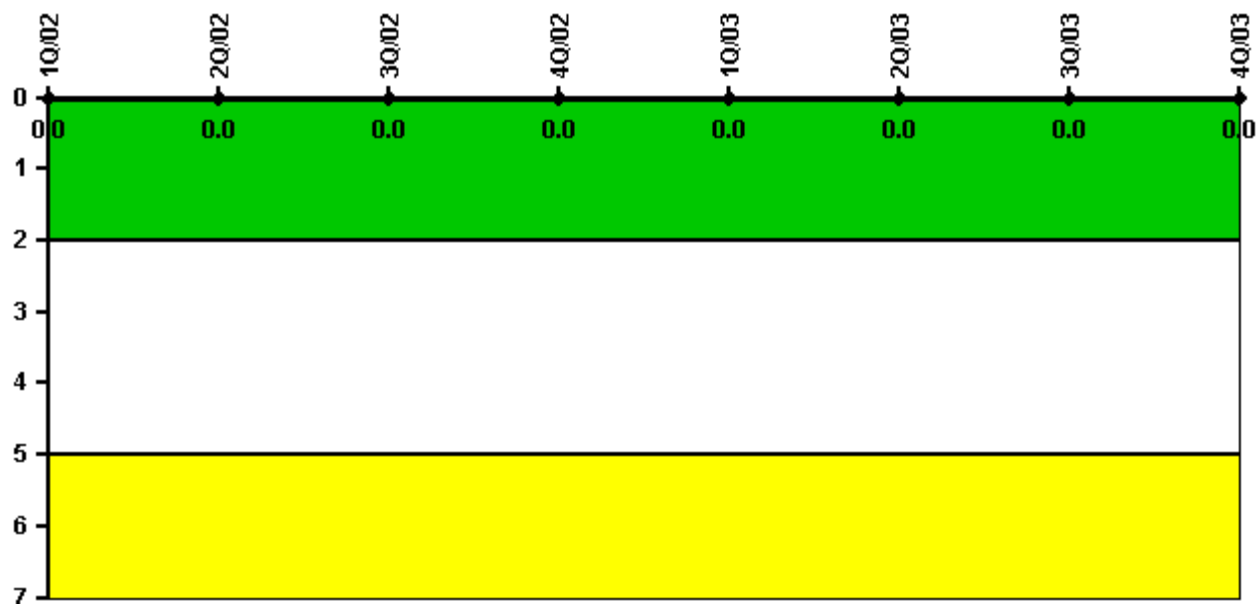
Thresholds: White > 0.080

#### Notes

Protected Area Security Performance Index	1Q/02	2Q/02	3Q/02	4Q/02	1Q/03	2Q/03	3Q/03	4Q/03
IDS compensatory hours	2.25	18.60	7.02	180.60	20.08	5.36	57.39	8.54
CCTV compensatory hours	0	8.6	6.9	0	14.9	0.2	0.6	0
IDS normalization factor	1.95	1.95	1.95	1.95	1.95	1.95	1.95	1.95
CCTV normalization factor	1.7	1.7	1.7	1.7	1.7	1.7	1.7	1.7
Index Value	0.006	0.004	0.003	0.007	0.008	0.007	0.008	0.003

Licensee Comments: none

### Personnel Screening Program



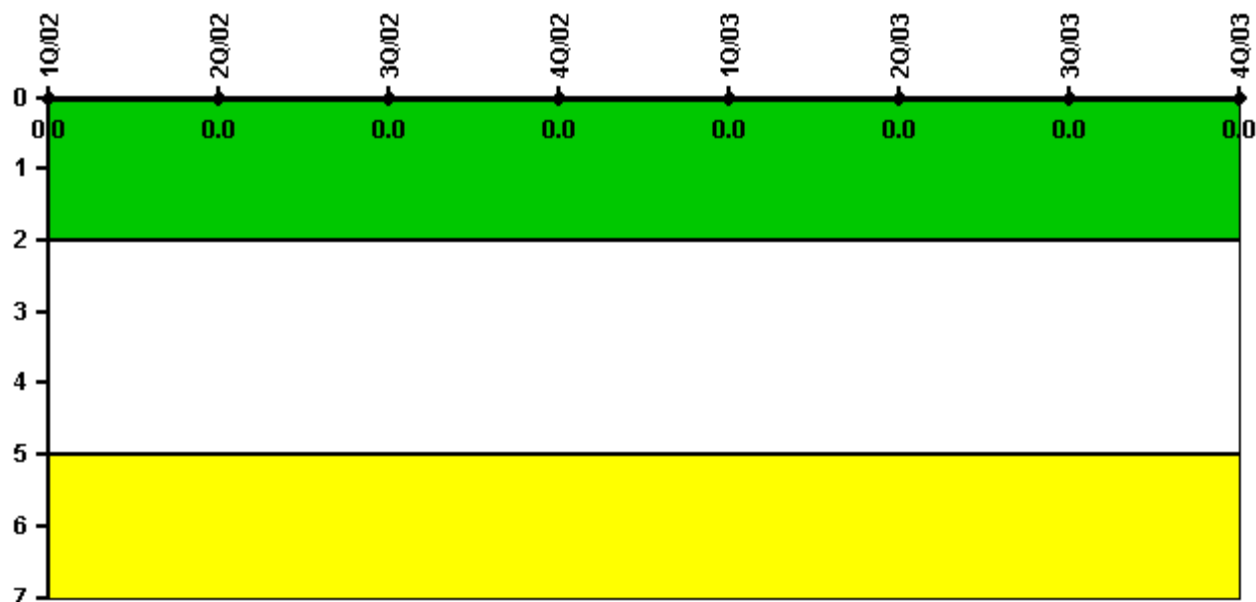
Thresholds: White > 2.0 Yellow > 5.0

#### Notes

Personnel Screening Program	1Q/02	2Q/02	3Q/02	4Q/02	1Q/03	2Q/03	3Q/03	4Q/03
Program failures	0	0	0	0	0	0	0	0
Indicator value	0	0	0	0	0	0	0	0

Licensee Comments: none

### FFD/Personnel Reliability



Thresholds: White > 2.0 Yellow > 5.0

#### Notes

FFD/Personnel Reliability	1Q/02	2Q/02	3Q/02	4Q/02	1Q/03	2Q/03	3Q/03	4Q/03
Program Failures	0	0	0	0	0	0	0	0
Indicator value	0	0	0	0	0	0	0	0

Licensee Comments: none

▲ [PI Summary](#) | [Inspection Findings Summary](#) | [Reactor Oversight Process](#)

Last Modified: January 23, 2004