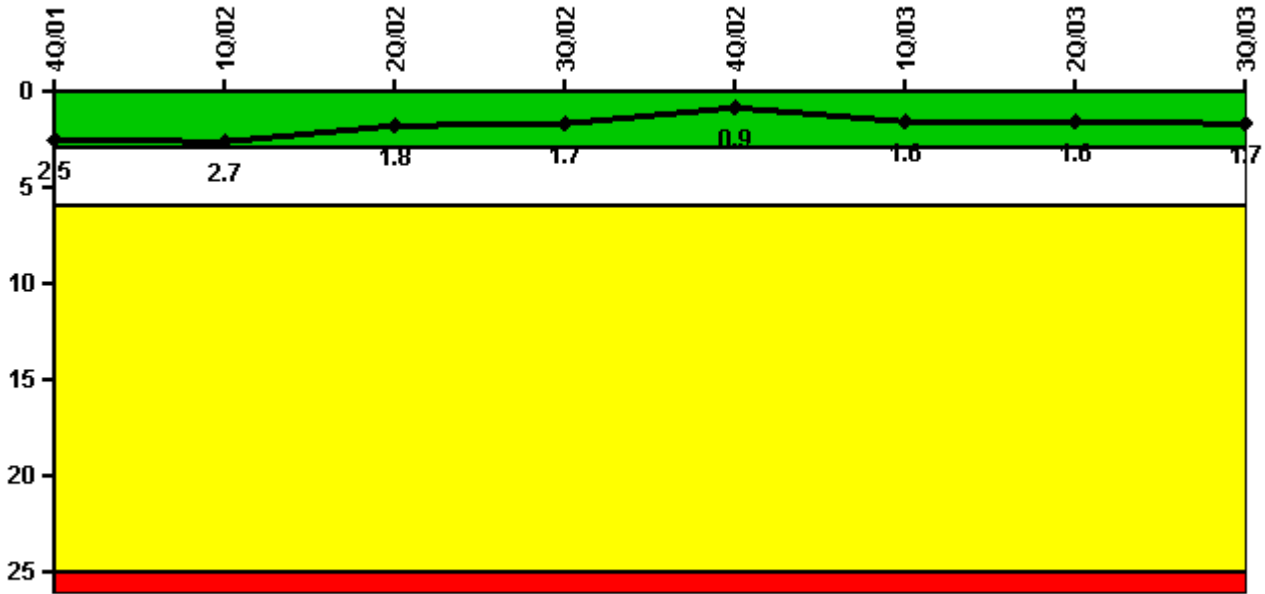


Watts Bar 1

3Q/2003 Performance Indicators

Licensee's General Comments: none

Unplanned Scrams per 7000 Critical Hrs



Thresholds: White > 3.0 Yellow > 6.0 Red > 25.0

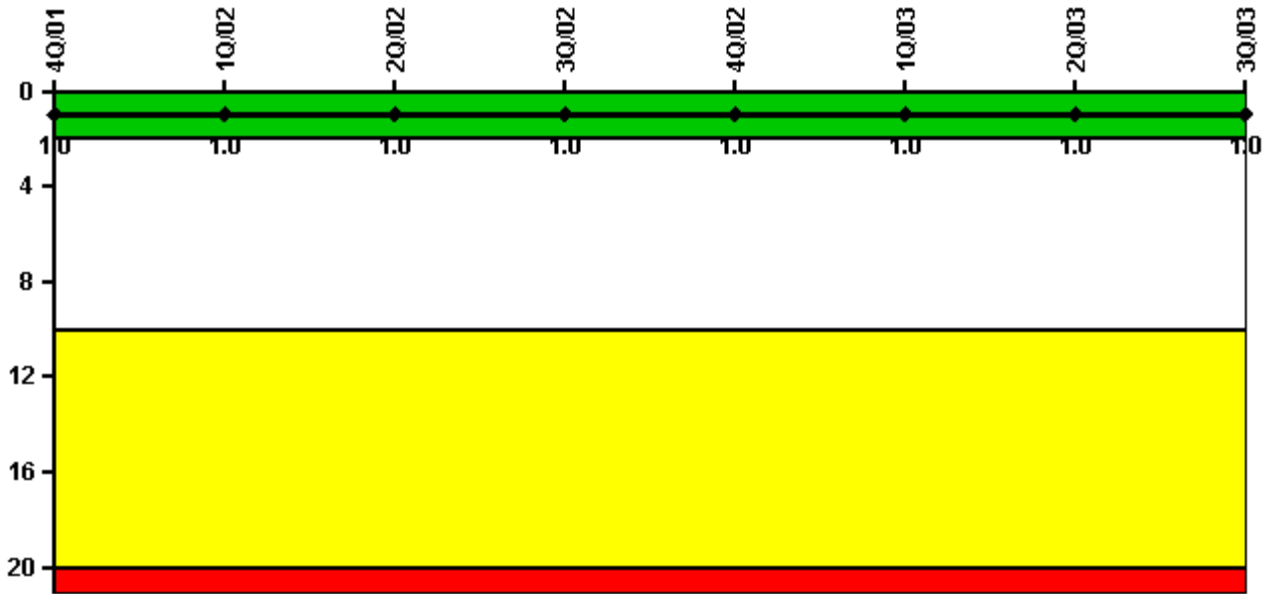
Notes

Unplanned Scrams per 7000 Critical Hrs	4Q/01	1Q/02	2Q/02	3Q/02	4Q/02	1Q/03	2Q/03	3Q/03
Unplanned scrams	1.0	0	0	1.0	0	1.0	0	1.0
Critical hours	2180.9	1611.3	2060.8	2185.5	2209.0	2036.0	2183.0	1626.5
Indicator value	2.5	2.7	1.8	1.7	0.9	1.6	1.6	1.7

Licensee Comments:

3Q/03: Scram due to unintentional bumping of the sudden pressure relay hose

Scrams with Loss of Normal Heat Removal



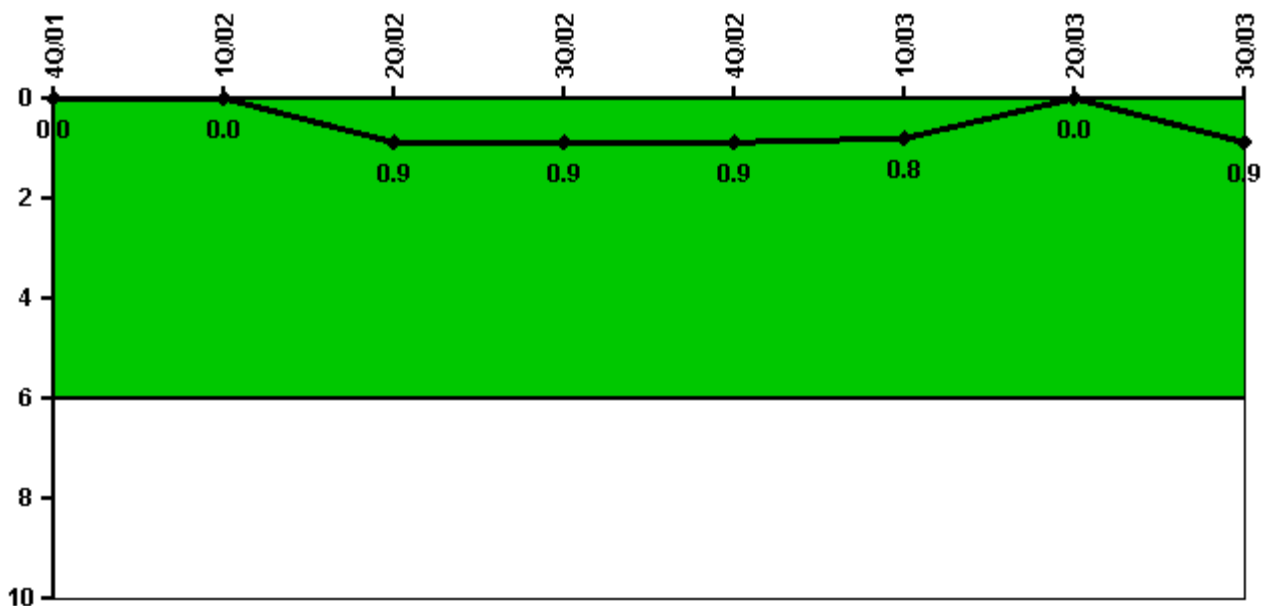
Thresholds: White > 2.0 Yellow > 10.0 Red > 20.0

Notes

Scrams with Loss of Normal Heat Removal	4Q/01	1Q/02	2Q/02	3Q/02	4Q/02	1Q/03	2Q/03	3Q/03
Scrams	0	0	0	0	0	0	0	0
Indicator value	1.0	1.0	1.0	1.0	1.0	1.0	1.0	1.0

Licensee Comments: none

Unplanned Power Changes per 7000 Critical Hrs



Thresholds: White > 6.0

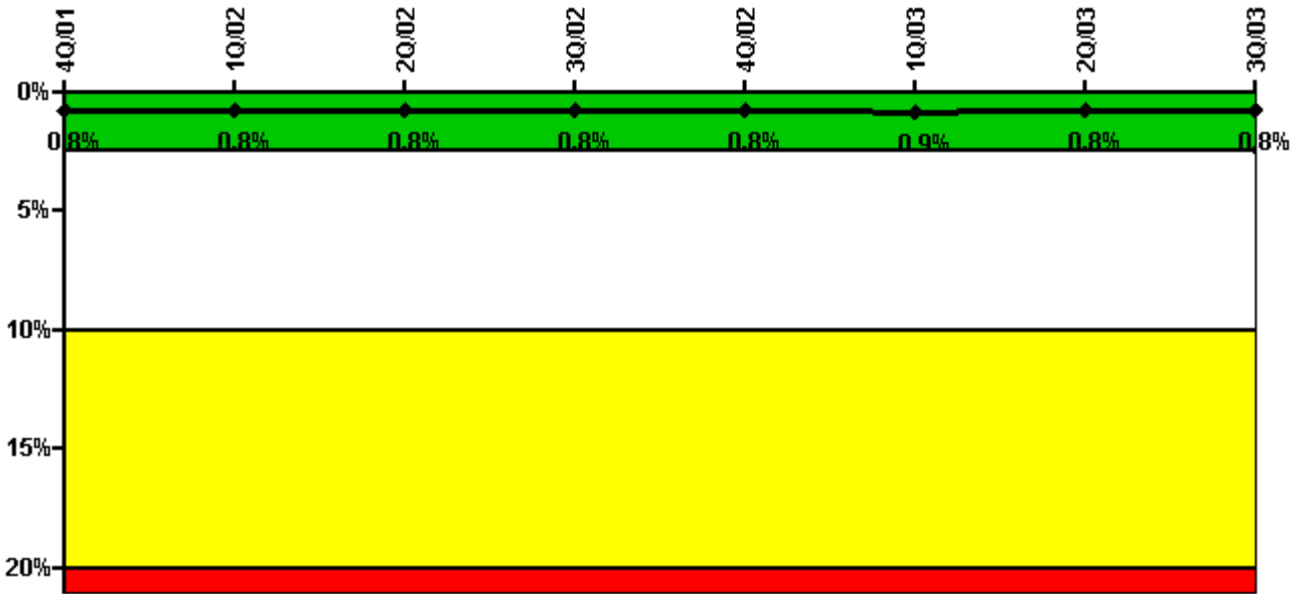
Notes

Unplanned Power Changes per 7000 Critical Hrs	4Q/01	1Q/02	2Q/02	3Q/02	4Q/02	1Q/03	2Q/03	3Q/03
Unplanned power changes	0	0	1.0	0	0	0	0	1.0
Critical hours	2180.9	1611.3	2060.8	2185.5	2209.0	2036.0	2183.0	1626.5
Indicator value	0	0	0.9	0.9	0.9	0.8	0	0.9

Licensee Comments:

3Q/03: Load reduction due to RCP seal leakoff.

Safety System Unavailability, Emergency AC Power, >2EDG



Thresholds: White > 2.5% Yellow > 10.0% Red > 20.0%

Notes

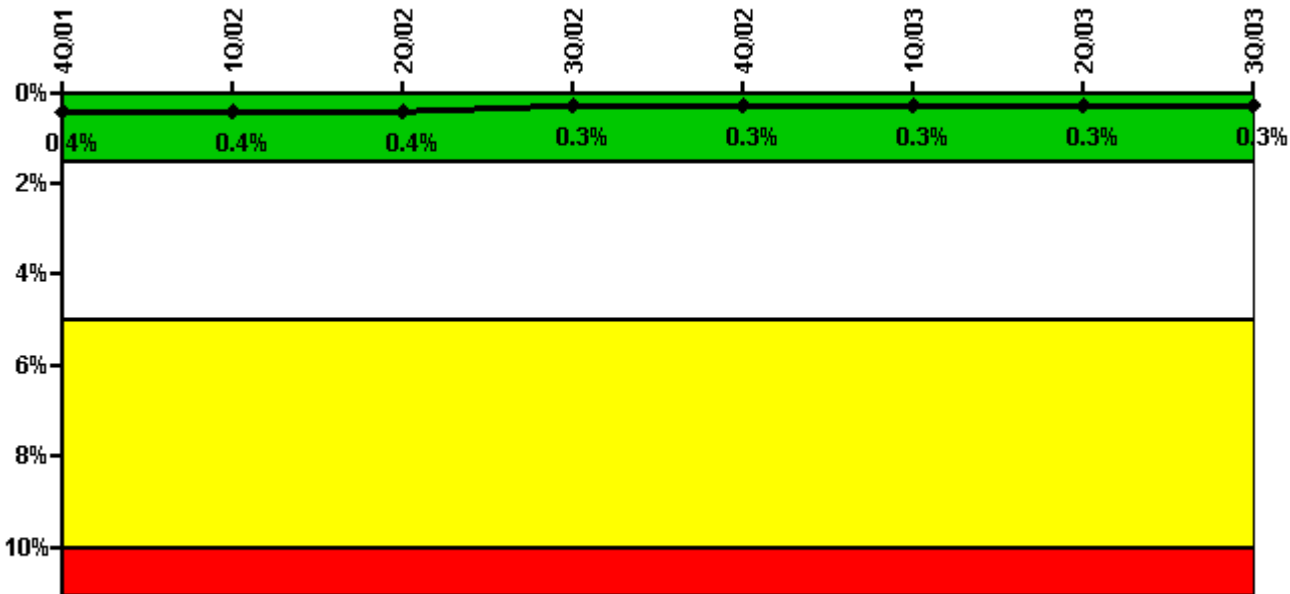
Safety System Unavailability, Emergency AC Power, >2EDG	4Q/01	1Q/02	2Q/02	3Q/02	4Q/02	1Q/03	2Q/03	3Q/03
Train 1								
Planned unavailable hours	14.73	2.14	4.55	1.05	7.75	37.72	27.43	7.38
Unplanned unavailable hours	0	0	0	0	0	0	0	0
Fault exposure hours	0	0	0	0	0	0	0	0
Effective Reset hours	0	0	0	0	0	0	0	0
Required hours	2209.00	1938.06	2183.00	2208.00	2209.00	2160.00	2183.00	2143.25
Train 2								
Planned unavailable hours	1.15	1.85	1.37	1.16	0.67	46.23	1.60	5.87
Unplanned unavailable hours	0	0	0	0	0	0	0	0
Fault exposure hours	0	0	0	0	0	0	0	0
Effective Reset hours	0	0	0	0	0	0	0	0
Required hours	2209.00	1902.72	2183.00	2208.00	2209.00	2160.00	2183.00	1740.92
Train 3								
Planned unavailable hours	7.01	2.00	1.39	1.23	1.35	54.45	2.20	1.90
Unplanned unavailable hours	0	0	0	0	0	21.93	0	12.10
Fault exposure hours	0	0	0	0	0	0	0	0
Effective Reset hours	0	0	0	0	0	0	0	0
Required hours	2209.00	1938.06	2183.00	2208.00	2209.00	2160.00	2183.00	2143.25
Train 4								
Planned unavailable hours	9.20	6.45	0.62	2.48	1.00	80.63	0.68	0.97
Unplanned unavailable hours	0	0	0	0	0	0	0	0
Fault exposure hours	0	0	0	0	0	0	0	0
Effective Reset hours	0	0	0	0	0	0	0	0
Required hours	2209.00	1902.72	2183.00	2208.00	2209.00	2160.00	2183.00	1740.92

Indicator value	0.8%	0.8%	0.8%	0.8%	0.8%	0.9%	0.8%	0.8%

Licensee Comments:

3Q/03: During RF05 with Unit 1 in less than Mode 6, a train of EDG's was maintained available for "ORAM" defense-in-depth. The EDG train provide additional power backup for Spent Fuel Pit Cooling. The unplanned unavailability for EDG 2A during August was due to troubleshooting and corrective maintenance associated with a blown fuse in a governor control PT circuit.

Safety System Unavailability, High Pressure Injection System (HPSI)



Thresholds: White > 1.5% Yellow > 5.0% Red > 10.0%

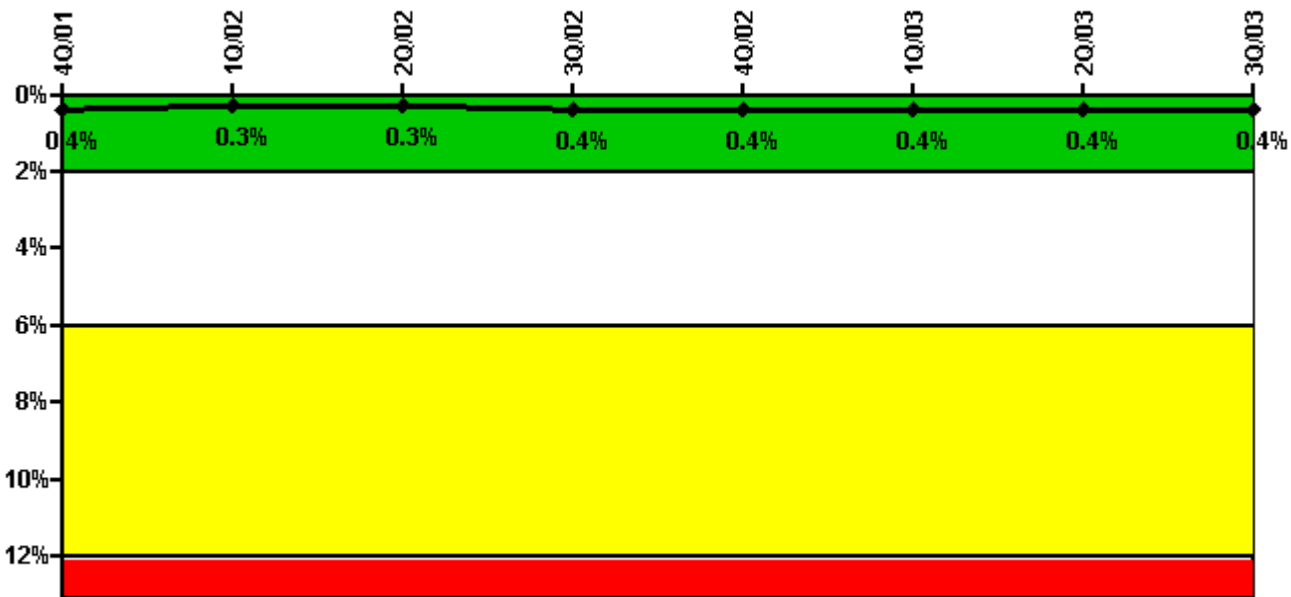
Notes

Safety System Unavailability, High Pressure Injection System (HPSI)	4Q/01	1Q/02	2Q/02	3Q/02	4Q/02	1Q/03	2Q/03	3Q/03
Train 1								
Planned unavailable hours	4.40	7.30	8.60	2.10	14.70	5.50	2.70	12.90
Unplanned unavailable hours	0	0	0	0	0	0	0	0
Fault exposure hours	0	0	0	0	0	0	0	0
Effective Reset hours	0	0	0	0	0	0	0	0
Required hours	2209.00	1678.00	2099.70	2208.00	2209.00	2160.00	2183.00	1674.40
Train 2								
Planned unavailable hours	1.70	2.00	0.10	3.10	3.70	1.90	34.00	2.00

Unplanned unavailable hours	0	0	0	0	0	0	0	0
Fault exposure hours	0	0	0	0	0	0	0	0
Effective Reset hours	0	0	0	0	0	0	0	0
Required hours	2209.00	1665.50	2087.30	2208.00	2209.00	2160.00	2183.00	1666.30
Train 3								
Planned unavailable hours	19.70	5.40	12.50	2.20	4.00	22.80	3.60	2.20
Unplanned unavailable hours	0	0	0	0	0	0	0	0
Fault exposure hours	0	0	0	0	0	0	0	0
Effective Reset hours	0	0	0	0	0	0	0	0
Required hours	2209.00	1662.70	2087.30	2208.00	2209.00	2160.00	2183.00	1666.30
Train 4								
Planned unavailable hours	4.10	3.40	0.80	5.00	3.90	23.60	19.10	17.50
Unplanned unavailable hours	0	0	0	0	0	0	0	0
Fault exposure hours	0	0	0	0	0	0	0	0
Effective Reset hours	0	0	0	0	0	0	0	0
Required hours	2209.00	1662.70	2087.30	2208.00	2209.00	2160.00	2183.00	1666.30
Indicator value	0.4%	0.4%	0.4%	0.3%	0.3%	0.3%	0.3%	0.3%

Licensee Comments: none

Safety System Unavailability, Heat Removal System (AFW)



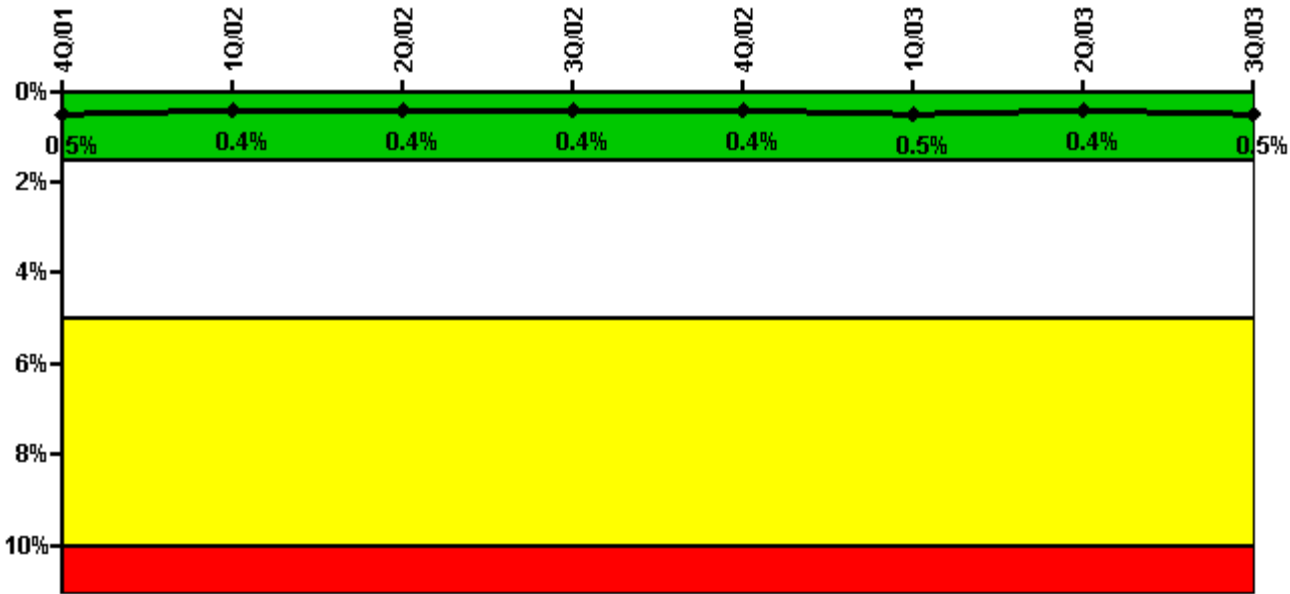
Thresholds: White > 2.0% Yellow > 6.0% Red > 12.0%

Notes

Safety System Unavailability, Heat Removal System (AFW)	4Q/01	1Q/02	2Q/02	3Q/02	4Q/02	1Q/03	2Q/03	3Q/03
Train 1								
Planned unavailable hours	25.85	3.38	8.97	1.90	3.18	12.55	31.59	2.08
Unplanned unavailable hours	0	0	0	0	0	0	0	0
Fault exposure hours	0	0	0	0	0	0	0	0
Effective Reset hours	0	0	0	0	0	0	0	0
Required hours	2209.00	1680.80	2099.70	2208.00	2209.00	2160.00	2183.00	1674.40
Train 2								
Planned unavailable hours	13.56	2.38	0	11.20	3.44	8.18	5.76	2.55
Unplanned unavailable hours	0	0	0	0	0	0	0	0
Fault exposure hours	0	0	0	0	0	0	0	0
Effective Reset hours	0	0	0	0	0	0	0	0
Required hours	2209.00	1680.80	2099.70	2208.00	2209.00	2160.00	2183.00	1674.40
Train 3								
Planned unavailable hours	8.04	4.07	0.03	11.80	0.65	13.82	28.17	0.83
Unplanned unavailable hours	0	0	0	0	0	0	0	0
Fault exposure hours	0	0	0	0	0	0	0	0
Effective Reset hours	0	0	0	0	0	0	0	0
Required hours	2209.00	1662.60	2087.30	2208.00	2209.00	2160.00	2183.00	1666.30
Indicator value	0.4%	0.3%	0.3%	0.4%	0.4%	0.4%	0.4%	0.4%

Licensee Comments: none

Safety System Unavailability, Residual Heat Removal System



Thresholds: White > 1.5% Yellow > 5.0% Red > 10.0%

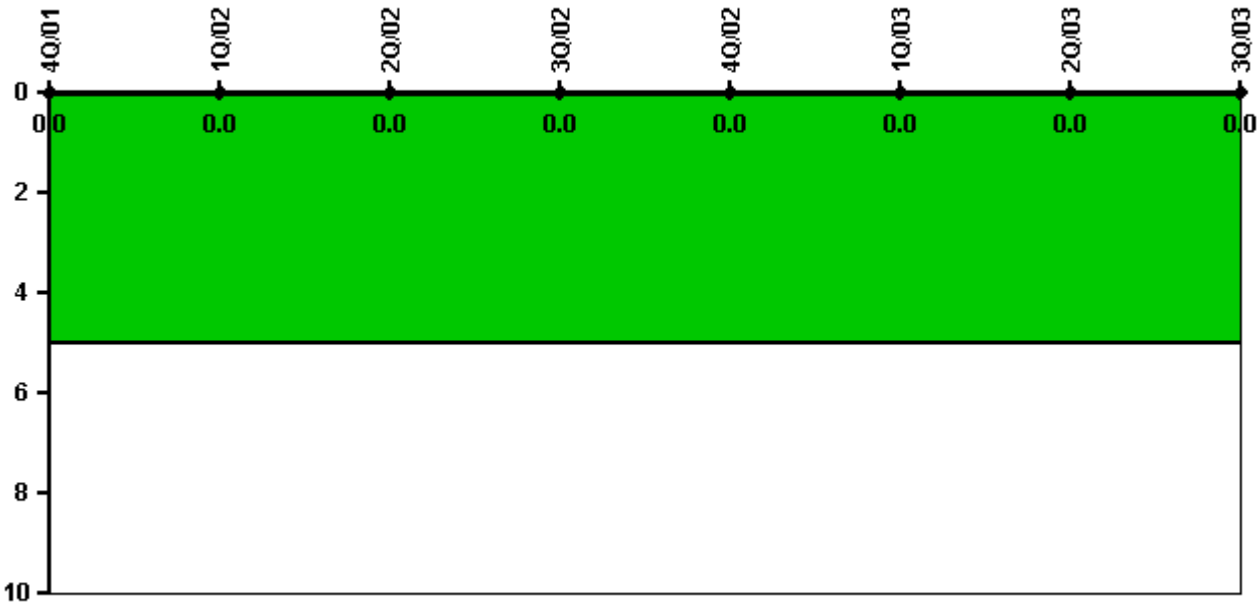
Notes

Safety System Unavailability, Residual Heat Removal System	4Q/01	1Q/02	2Q/02	3Q/02	4Q/02	1Q/03	2Q/03	3Q/03
Train 1								
Planned unavailable hours	31.47	5.24	10.49	3.43	5.67	50.35	7.32	14.48
Unplanned unavailable hours	0	0.03	0	0	0	0	0	0
Fault exposure hours	0	0	0	0	0	0	0	0
Effective Reset hours	0	0	0	0	0	0	0	0
Required hours	2209.00	2091.40	2183.00	2208.00	2209.00	2160.00	2183.00	1926.30
Train 2								
Planned unavailable hours	30.63	5.37	9.95	8.32	5.90	4.14	21.00	5.97
Unplanned unavailable hours	0	0.03	0	0	0	0	0	0.22
Fault exposure hours	0	0	0	0	0	0	0	0
Effective Reset hours	0	0	0	0	0	0	0	0
Required hours	2209.00	2091.40	2183.00	2208.00	2209.00	2160.00	2183.00	1926.30
Indicator value	0.5%	0.4%	0.4%	0.4%	0.4%	0.5%	0.4%	0.5%

Licensee Comments:

3Q/03: Unplanned unavailability due to support system. Component cooling system removed from service during testing activities. PER 03-015894-000

Safety System Functional Failures (PWR)



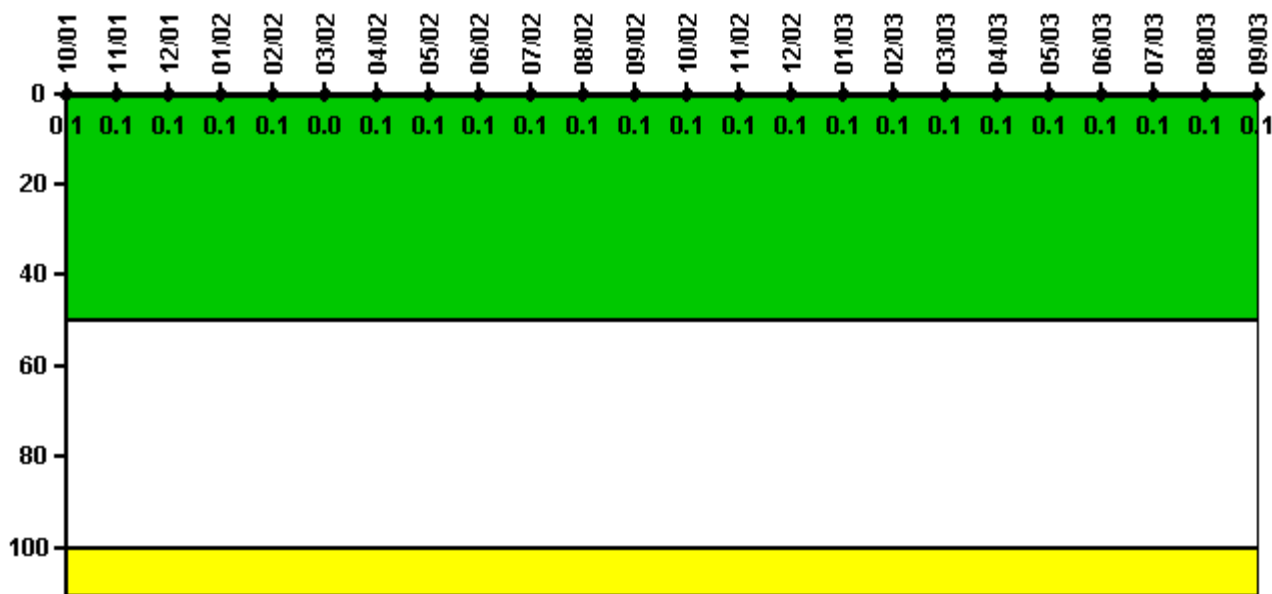
Thresholds: White > 5.0

Notes

Safety System Functional Failures (PWR)	4Q/01	1Q/02	2Q/02	3Q/02	4Q/02	1Q/03	2Q/03	3Q/03
Safety System Functional Failures	0	0	0	0	0	0	0	0
Indicator value	0	0	0	0	0	0	0	0

Licensee Comments: none

Reactor Coolant System Activity



Thresholds: White > 50.0 Yellow > 100.0

Notes

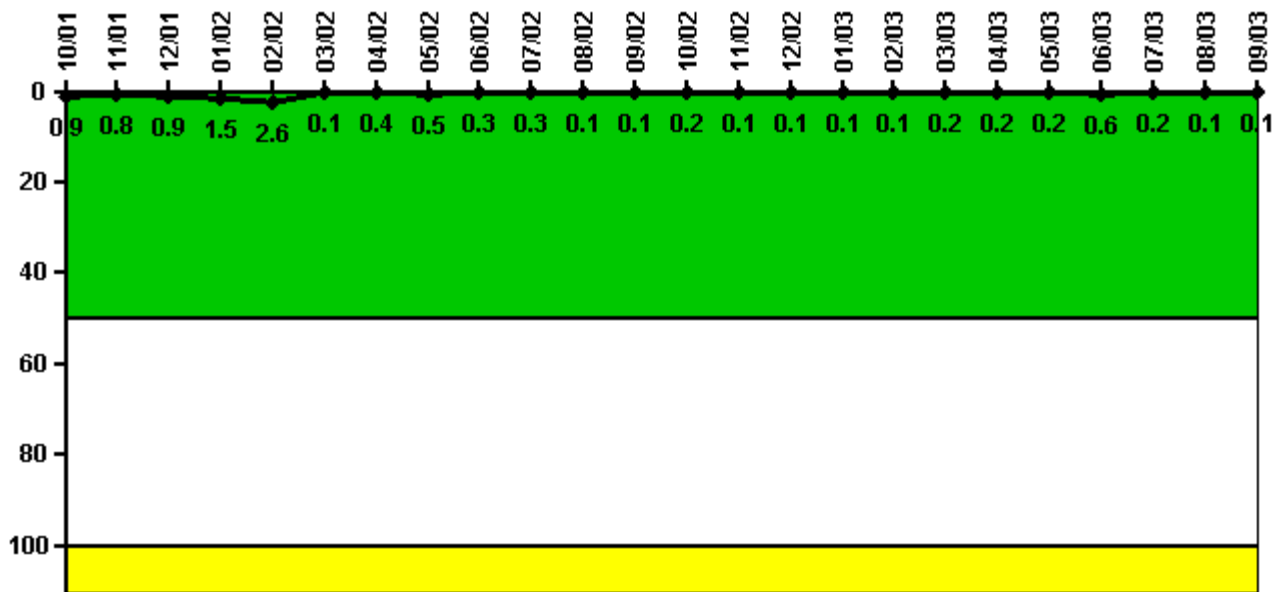
Reactor Coolant System Activity	10/01	11/01	12/01	1/02	2/02	3/02	4/02	5/02	6/02	7/02	8/02	9/02
Maximum activity	0.000297	0.000301	0.000291	0.000310	0.000367	0.000081	0.000150	0.000136	0.000135	0.000148	0.000149	0.000150
Technical specification limit	0.3	0.3	0.3	0.3	0.3	0.3	0.3	0.3	0.3	0.3	0.3	0.3
Indicator value	0.1	0.1	0.1	0.1	0.1	0	0.1	0.1	0.1	0.1	0.1	0.1

Reactor Coolant System Activity	10/02	11/02	12/02	1/03	2/03	3/03	4/03	5/03	6/03	7/03	8/03	9/03
Maximum activity	0.000151	0.000156	0.000163	0.000162	0.000193	0.000166	0.000177	0.000167	0.000170	0.000175	0.000179	0.000242
Technical specification limit	0.3	0.3	0.3	0.3	0.3	0.3	0.3	0.3	0.3	0.3	0.3	0.3
Indicator value	0.1	0.1	0.1	0.1	0.1	0.1	0.1	0.1	0.1	0.1	0.1	0.1

Licensee Comments:

9/03: Since NEI 99-02 defines steady state to be continuous operation for at least three days at a power level that does not vary by more than +/- 5 percent, the DEI data for the remainder of the month following the power down on 09/05/03 was not considered.

Reactor Coolant System Leakage



Thresholds: White > 50.0 Yellow > 100.0

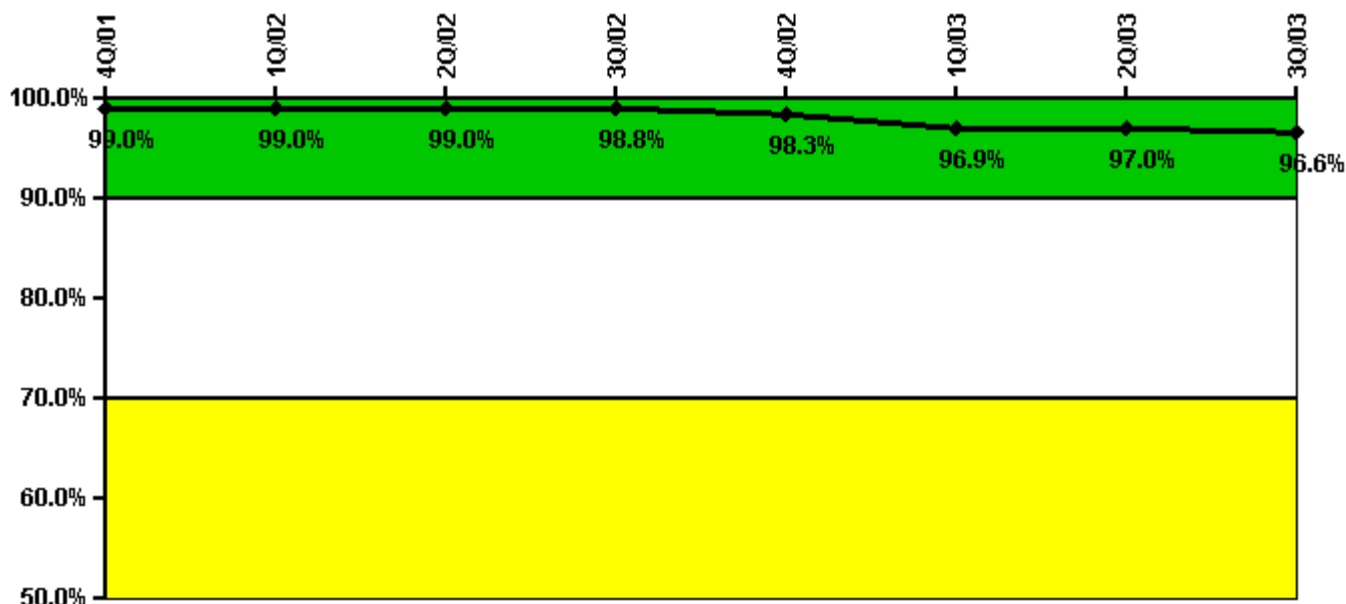
Notes

Reactor Coolant System Leakage	10/01	11/01	12/01	1/02	2/02	3/02	4/02	5/02	6/02	7/02	8/02	9/02
Maximum leakage	0.090	0.080	0.090	0.150	0.260	0.010	0.040	0.050	0.030	0.030	0.010	0.010
Technical specification limit	10.0	10.0	10.0	10.0	10.0	10.0	10.0	10.0	10.0	10.0	10.0	10.0
Indicator value	0.9	0.8	0.9	1.5	2.6	0.1	0.4	0.5	0.3	0.3	0.1	0.1

Reactor Coolant System Leakage	10/02	11/02	12/02	1/03	2/03	3/03	4/03	5/03	6/03	7/03	8/03	9/03
Maximum leakage	0.020	0.010	0.010	0.010	0.010	0.020	0.020	0.020	0.060	0.020	0.010	0.010
Technical specification limit	10.0	10.0	10.0	10.0	10.0	10.0	10.0	10.0	10.0	10.0	10.0	10.0
Indicator value	0.2	0.1	0.1	0.1	0.1	0.2	0.2	0.2	0.6	0.2	0.1	0.1

Licensee Comments: none

Drill/Exercise Performance



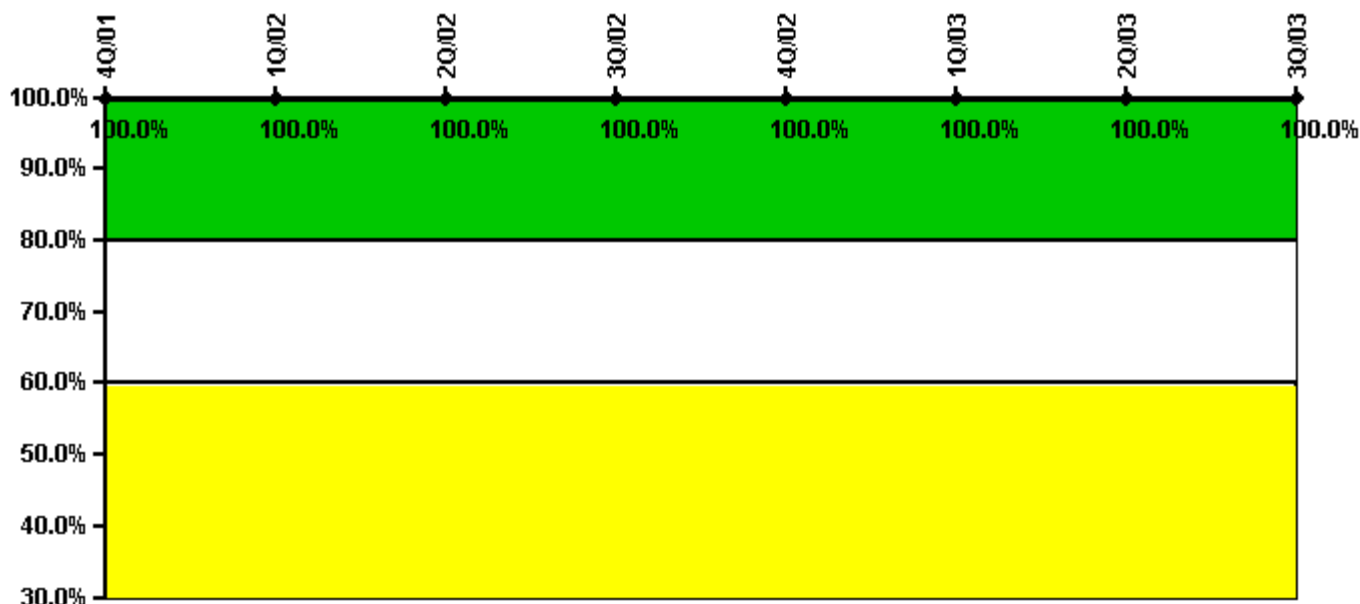
Thresholds: White < 90.0% Yellow < 70.0%

Notes

Drill/Exercise Performance	4Q/01	1Q/02	2Q/02	3Q/02	4Q/02	1Q/03	2Q/03	3Q/03
Successful opportunities	49.0	0	6.0	8.0	45.0	8.0	6.0	47.0
Total opportunities	50.0	0	6.0	8.0	46.0	10.0	6.0	49.0
Indicator value	99.0%	99.0%	99.0%	98.8%	98.3%	96.9%	97.0%	96.6%

Licensee Comments: none

ERO Drill Participation



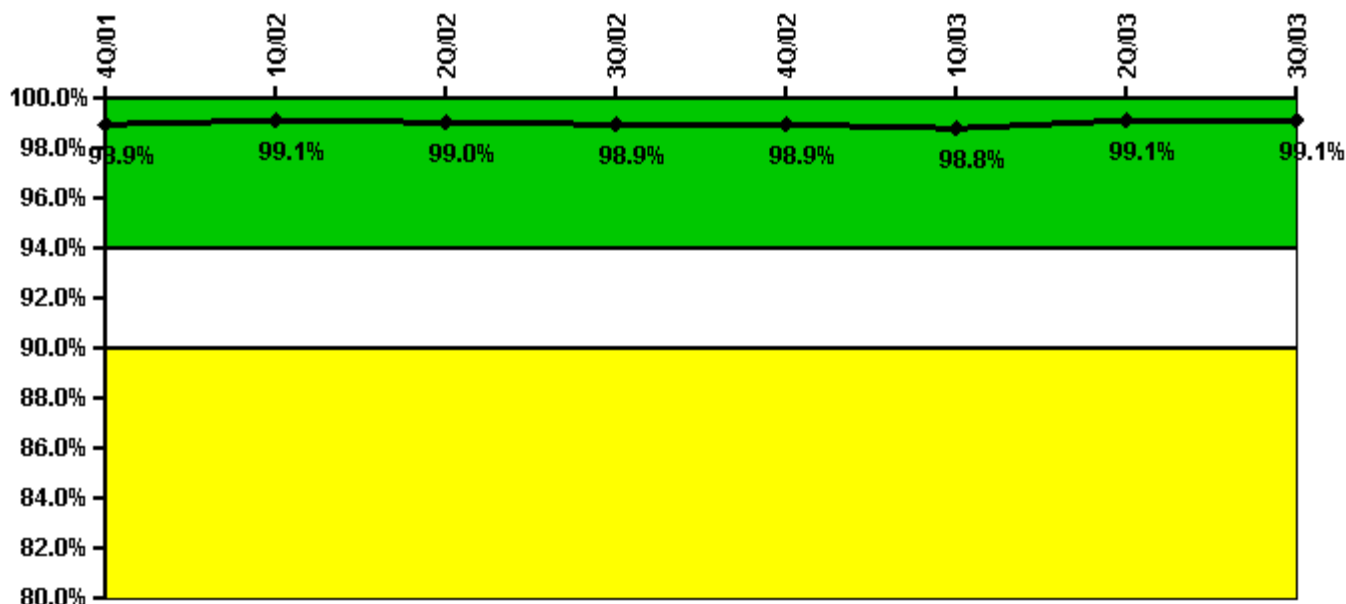
Thresholds: White < 80.0% Yellow < 60.0%

Notes

ERO Drill Participation	4Q/01	1Q/02	2Q/02	3Q/02	4Q/02	1Q/03	2Q/03	3Q/03
Participating Key personnel	50.0	50.0	54.0	54.0	56.0	56.0	57.0	55.0
Total Key personnel	50.0	50.0	54.0	54.0	56.0	56.0	57.0	55.0
Indicator value	100.0%	100.0%	100.0%	100.0%	100.0%	100.0%	100.0%	100.0%

Licensee Comments: none

Alert & Notification System



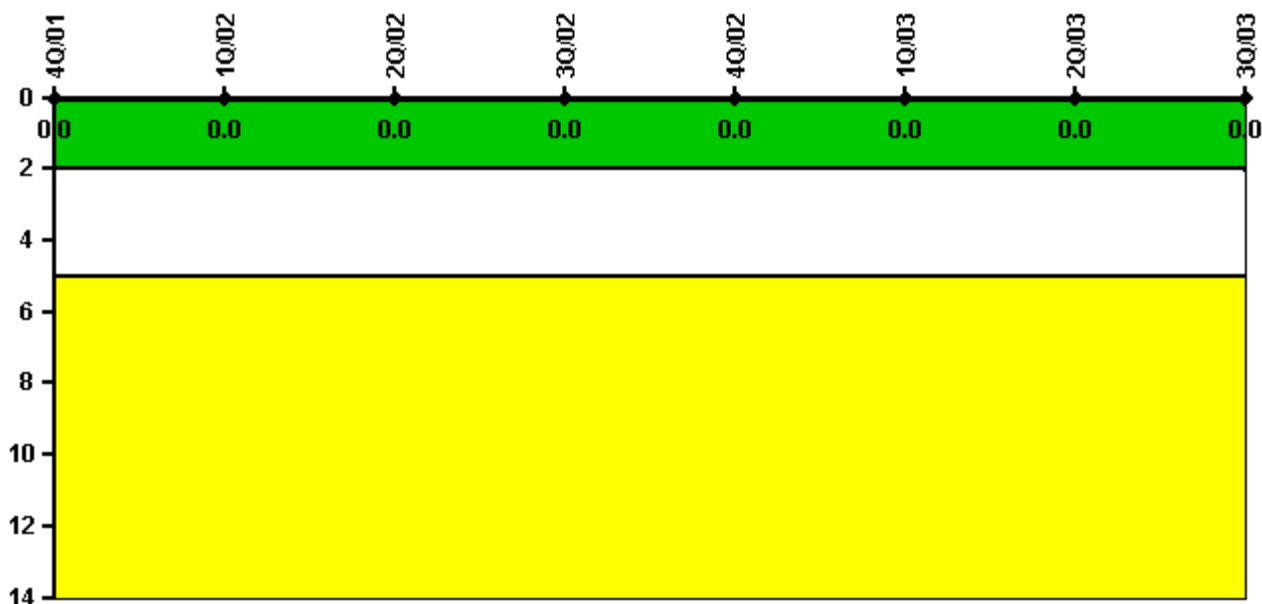
Thresholds: White < 94.0% Yellow < 90.0%

Notes

Alert & Notification System	4Q/01	1Q/02	2Q/02	3Q/02	4Q/02	1Q/03	2Q/03	3Q/03
Successful siren-tests	882	688	777	785	882	686	885	786
Total sirens-tests	891	693	792	792	891	693	891	792
Indicator value	98.9%	99.1%	99.0%	98.9%	98.9%	98.8%	99.1%	99.1%

Licensee Comments: none

Occupational Exposure Control Effectiveness



Thresholds: White > 2.0 Yellow > 5.0

Notes

Occupational Exposure Control Effectiveness	4Q/01	1Q/02	2Q/02	3Q/02	4Q/02	1Q/03	2Q/03	3Q/03
High radiation area occurrences	0	0	0	0	0	0	0	0
Very high radiation area occurrences	0	0	0	0	0	0	0	0
Unintended exposure occurrences	0	0	0	0	0	0	0	0
Indicator value	0	0	0	0	0	0	0	0

Licensee Comments: none

RETS/ODCM Radiological Effluent



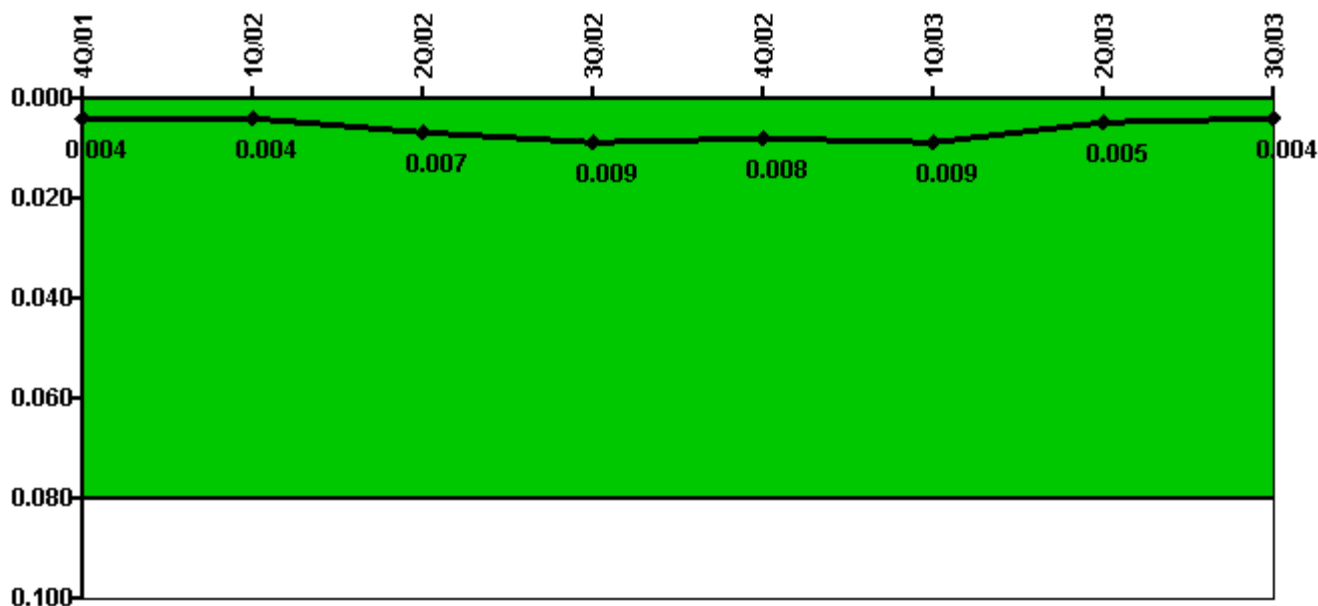
Thresholds: White > 1.0 Yellow > 3.0

Notes

RETS/ODCM Radiological Effluent	4Q/01	1Q/02	2Q/02	3Q/02	4Q/02	1Q/03	2Q/03	3Q/03
RETS/ODCM occurrences	0	0	0	0	0	0	0	0
Indicator value	0	0	0	0	0	0	0	0

Licensee Comments: none

Protected Area Security Performance Index



Thresholds: White > 0.080

Notes

Protected Area Security Performance Index	4Q/01	1Q/02	2Q/02	3Q/02	4Q/02	1Q/03	2Q/03	3Q/03
IDS compensatory hours	22.90	11.10	46.70	62.30	14.10	40.10	76.60	3.30
CCTV compensatory hours	6.2	23.8	151.7	6.4	0.4	15.2	0	21.6
IDS normalization factor	2.40	2.40	2.40	2.40	2.40	2.40	2.40	2.40
CCTV normalization factor	2.1	2.1	2.1	2.1	2.1	2.1	2.1	2.1
Index Value	0.004	0.004	0.007	0.009	0.008	0.009	0.005	0.004

Licensee Comments: none

Personnel Screening Program



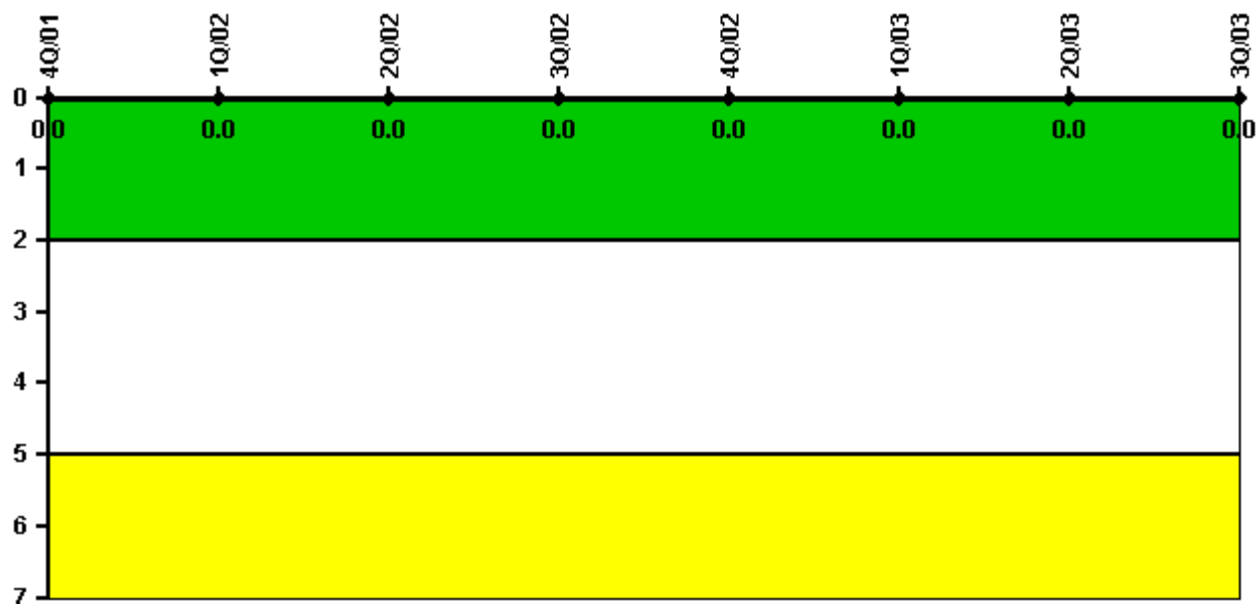
Thresholds: White > 2.0 Yellow > 5.0

Notes

Personnel Screening Program	4Q/01	1Q/02	2Q/02	3Q/02	4Q/02	1Q/03	2Q/03	3Q/03
Program failures	0	0	0	0	0	0	0	0
Indicator value	0	0	0	0	0	0	0	0

Licensee Comments: none

FFD/Personnel Reliability



Thresholds: White > 2.0 Yellow > 5.0

Notes

FFD/Personnel Reliability	4Q/01	1Q/02	2Q/02	3Q/02	4Q/02	1Q/03	2Q/03	3Q/03
Program Failures	0	0	0	0	0	0	0	0
Indicator value	0	0	0	0	0	0	0	0

Licensee Comments: none

▲ [PI Summary](#) | [Inspection Findings Summary](#) | [Reactor Oversight Process](#)

Last Modified: October 22, 2003