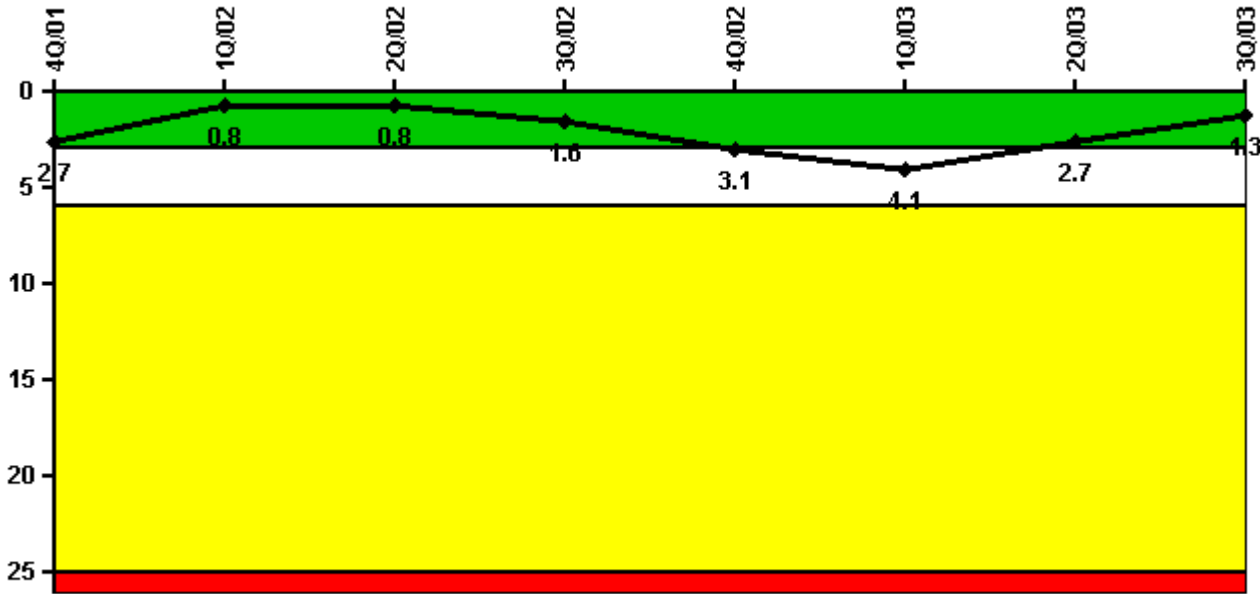


South Texas 2

3Q/2003 Performance Indicators

Licensee's General Comments: none

Unplanned Scrams per 7000 Critical Hrs



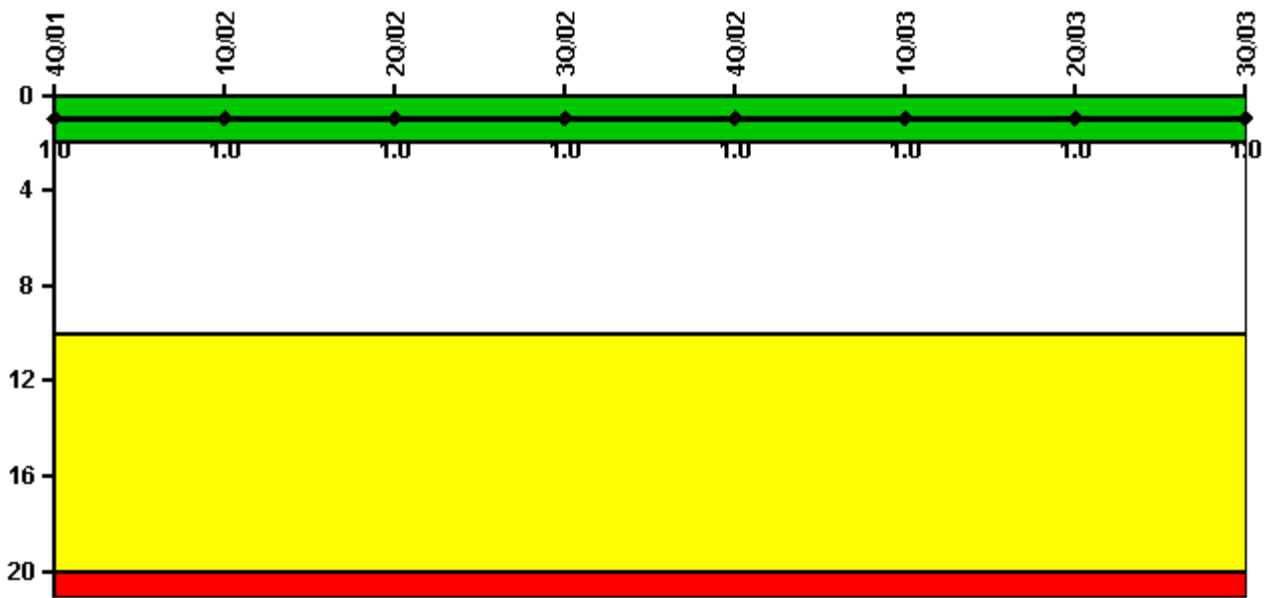
Thresholds: White > 3.0 Yellow > 6.0 Red > 25.0

Notes

Unplanned Scrams per 7000 Critical Hrs	4Q/01	1Q/02	2Q/02	3Q/02	4Q/02	1Q/03	2Q/03	3Q/03
Unplanned scrams	0	0	1.0	1.0	1.0	0	0	0
Critical hours	2072.6	2160.0	2114.9	2181.2	287.6	546.8	2183.0	2208.0
Indicator value	2.7	0.8	0.8	1.6	3.1	4.1	2.7	1.3

Licensee Comments: none

Scrams with Loss of Normal Heat Removal



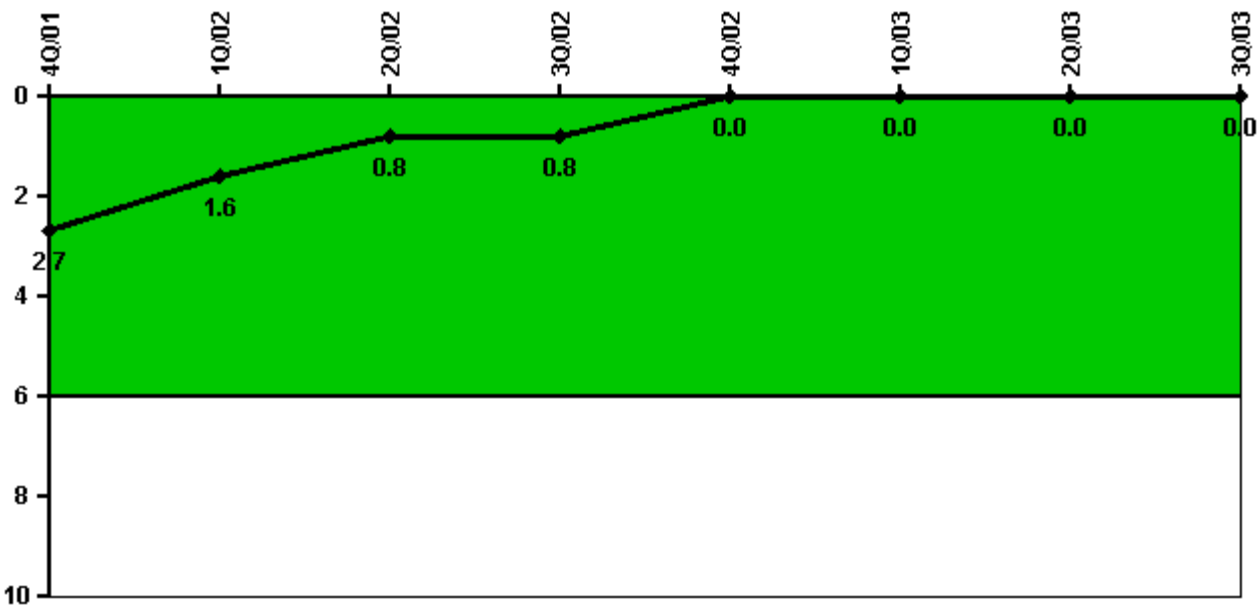
Thresholds: White > 2.0 Yellow > 10.0 Red > 20.0

Notes

Scrams with Loss of Normal Heat Removal	4Q/01	1Q/02	2Q/02	3Q/02	4Q/02	1Q/03	2Q/03	3Q/03
Scrams	0	0	0	0	0	0	0	0
Indicator value	1.0	1.0	1.0	1.0	1.0	1.0	1.0	1.0

Licensee Comments: none

Unplanned Power Changes per 7000 Critical Hrs



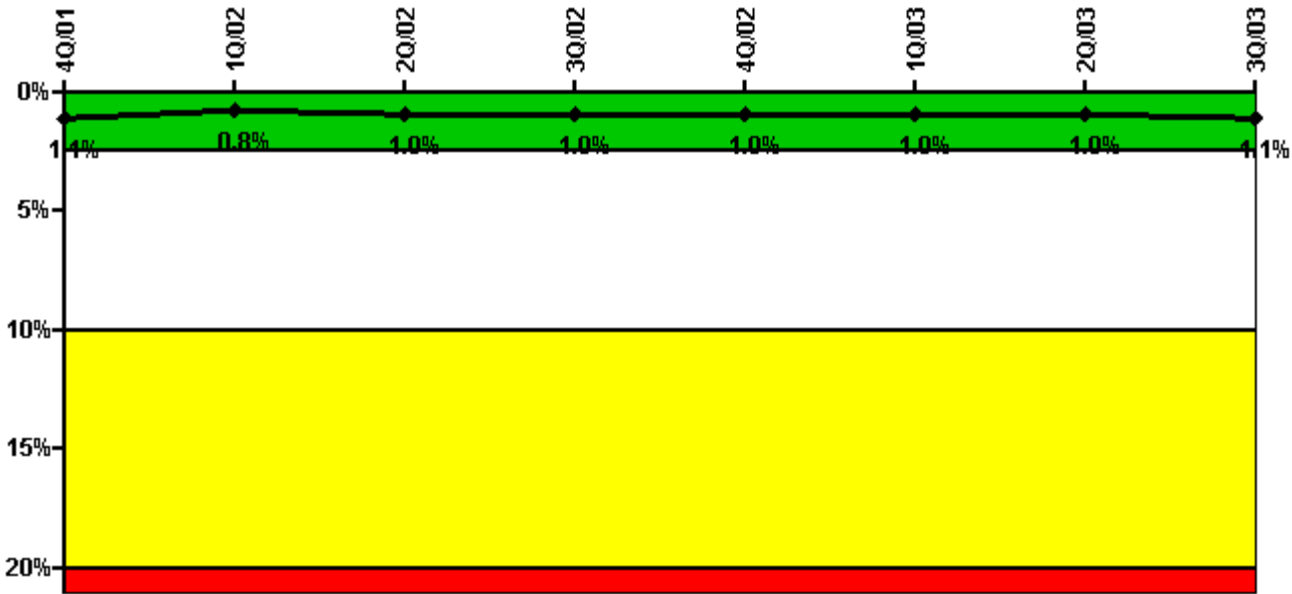
Thresholds: White > 6.0

Notes

Unplanned Power Changes per 7000 Critical Hrs	4Q/01	1Q/02	2Q/02	3Q/02	4Q/02	1Q/03	2Q/03	3Q/03
Unplanned power changes	1.0	0	0	0	0	0	0	0
Critical hours	2072.6	2160.0	2114.9	2181.2	287.6	546.8	2183.0	2208.0
Indicator value	2.7	1.6	0.8	0.8	0	0	0	0

Licensee Comments: none

Safety System Unavailability, Emergency AC Power, >2EDG



Thresholds: White > 2.5% Yellow > 10.0% Red > 20.0%

Notes

Safety System Unavailability, Emergency AC Power, >2EDG	4Q/01	1Q/02	2Q/02	3Q/02	4Q/02	1Q/03	2Q/03	3Q/03
Train 1								
Planned unavailable hours	53.20	18.47	44.00	15.50	0	12.52	0	20.90
Unplanned unavailable hours	0	0	26.43	0	0	0	0	0
Fault exposure hours	0	0	0	0	0	0	0	0
Effective Reset hours	0	0	0	0	0	0	0	0
Required hours	2209.00	2160.00	2183.00	2208.00	2209.00	2160.00	2183.00	2208.00
Train 2								
Planned unavailable hours	21.30	39.10	20.55	18.00	0	0	0	39.74
Unplanned unavailable hours	0	0	0	0	0	0	0	34.18
Fault exposure hours	0	0	0	0	0	0	0	0
Effective Reset hours	0	0	0	0	0	0	0	0
Required hours	2209.00	2160.00	2183.00	2208.00	2209.00	2160.00	2183.00	2208.00
Train 3								
Planned unavailable hours	0	33.33	0	12.95	0	0	15.10	44.83
Unplanned unavailable hours	0	0	132.73	0	0	0	7.43	0
Fault exposure hours	0	0	0	0	0	0	0	0
Effective Reset hours	0	0	0	0	0	0	0	0
Required hours	2209.00	2160.00	2183.00	2208.00	2209.00	2160.00	2183.00	2208.00
Indicator value	1.1%	0.8%	1.0%	1.0%	1.0%	1.0%	1.0%	1.1%

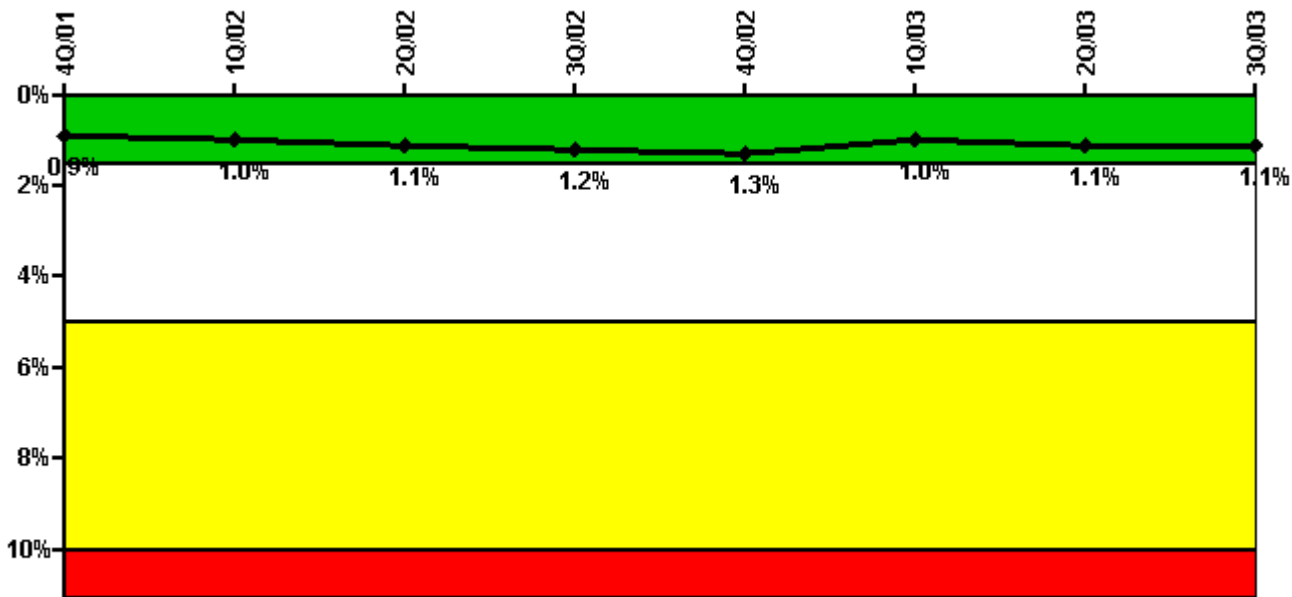
Licensee Comments:

3Q/03: Corrected 2nd Qtr 2003 May Train 3 to reflect 4.5 hours unplanned unavailable hours due to ECW pump

2C rework of packing after pump was declared operable.

2Q/03: Corrected 2nd Qtr 2003 May Train 3 to reflect 4.5 hours unplanned unavailable hours due to ECW pump 2C rework of packing after pump was declared operable. Corrections made to the planned unavailable hours taking credit for maintenance overhaul hours for the following dates: 1st Qtr 2000, February, Train 3 - 2nd Qtr 2000, May, Train 2 - 4th Qtr 2000, December, Train 1 - 4th Qtr 2001, December, Train 2 - 3rd Qtr, June, Train 3

Safety System Unavailability, High Pressure Injection System (HPSI)



Thresholds: White > 1.5% Yellow > 5.0% Red > 10.0%

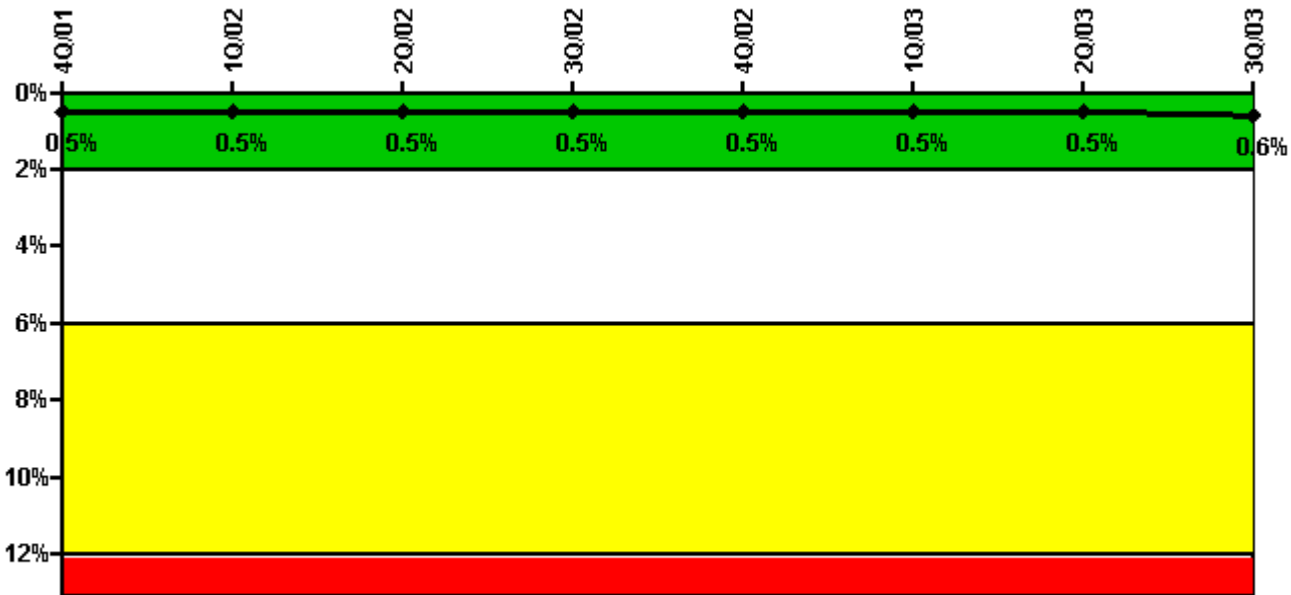
Notes

Safety System Unavailability, High Pressure Injection System (HPSI)	4Q/01	1Q/02	2Q/02	3Q/02	4Q/02	1Q/03	2Q/03	3Q/03
Train 1								
Planned unavailable hours	14.80	1.20	18.77	52.87	0	0.42	13.02	9.08
Unplanned unavailable hours	0	0	0	0	0	0	0	0
Fault exposure hours	0	0	0	0	0	0	0	0
Effective Reset hours	0	0	0	0	0	0	0	0
Required hours	2072.60	2160.00	2183.00	2208.00	445.52	1205.61	2183.00	2208.00
Train 2								
Planned unavailable hours	0.50	11.50	14.50	38.43	0	0	19.30	23.93
Unplanned unavailable hours	0	0	0	0	0	0	0	0
Fault exposure hours	0	0	0	0	0	0	0	0
Effective Reset hours	0	0	0	0	0	0	0	0
Required hours	2072.60	2160.00	2183.00	2208.00	445.52	1205.61	2183.00	2208.00

Train 3								
Planned unavailable hours	0	14.88	63.13	89.79	0	0.58	46.92	14.87
Unplanned unavailable hours	0	0	0	0	0	0	0	0
Fault exposure hours	0	0	0	0	0	0	0	0
Effective Reset hours	0	0	0	0	0	0	0	0
Required hours	2072.60	2160.00	2183.00	2208.00	445.52	1205.61	2183.00	2208.00
Indicator value	0.9%	1.0%	1.1%	1.2%	1.3%	1.0%	1.1%	1.1%

Licensee Comments: none

Safety System Unavailability, Heat Removal System (AFW)



Thresholds: White > 2.0% Yellow > 6.0% Red > 12.0%

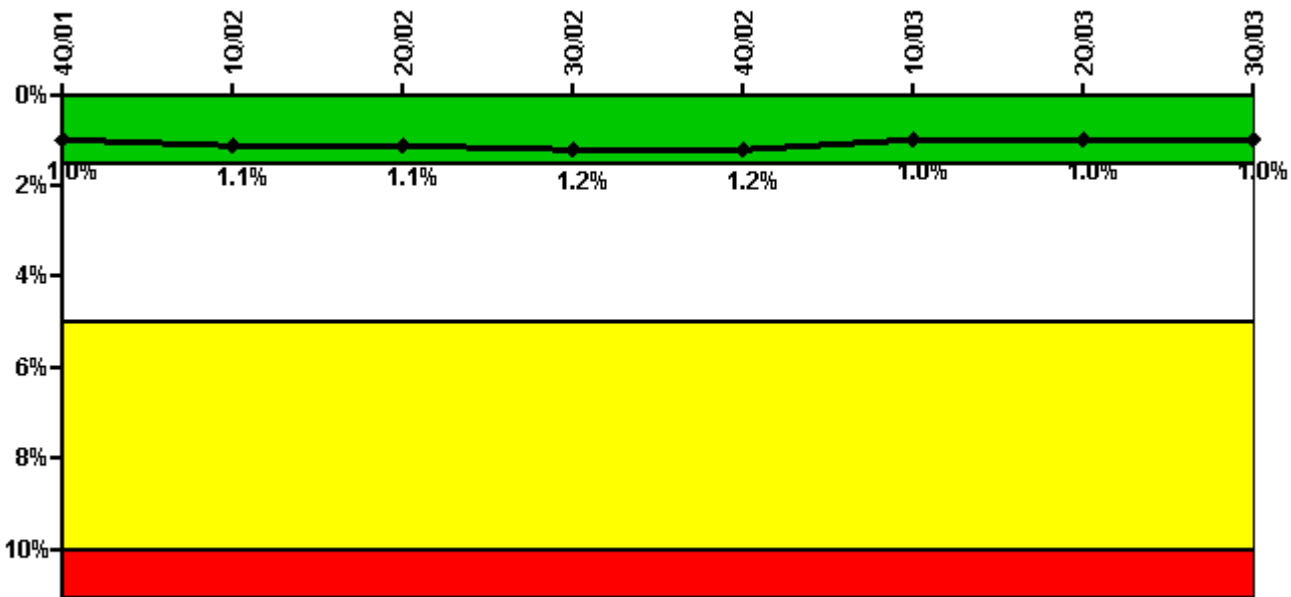
Notes

Safety System Unavailability, Heat Removal System (AFW)	4Q/01	1Q/02	2Q/02	3Q/02	4Q/02	1Q/03	2Q/03	3Q/03
Train 1								
Planned unavailable hours	7.60	12.57	0	0	0	0	1.83	0
Unplanned unavailable hours	0	0	0	0	0	0	0	0
Fault exposure hours	0	0	0	0	0	0	0	0
Effective Reset hours	0	0	0	0	0	0	0	0
Required hours	2072.60	2160.00	2183.00	2208.00	417.52	1183.57	2183.00	2208.00
Train 2								
Planned unavailable hours	6.30	0	19.67	4.50	0	0	11.52	45.45

Unplanned unavailable hours	0	0	0	0	0	0	0	0
Fault exposure hours	0	0	0	0	0	0	0	0
Effective Reset hours	0	0	0	0	0	0	0	0
Required hours	2072.60	2160.00	2183.00	2208.00	417.52	1183.57	2183.00	2208.00
Train 3								
Planned unavailable hours	17.90	6.38	0	19.26	0	11.55	22.68	33.67
Unplanned unavailable hours	0	0	0	0	0	0	0	0
Fault exposure hours	0	0	0	0	0	0	0	0
Effective Reset hours	0	0	0	0	0	0	0	0
Required hours	2072.60	2160.00	2183.00	2208.00	417.52	1183.57	2183.00	2208.00
Train 4								
Planned unavailable hours	27.70	40.82	12.65	0	0	0	19.75	27.75
Unplanned unavailable hours	0	0	11.35	0	9.52	0	0	0
Fault exposure hours	0	0	0	0	0	0	0	0
Effective Reset hours	0	0	0	0	0	0	0	0
Required hours	2072.60	2160.00	2183.00	2208.00	417.52	1183.57	2183.00	2208.00
Indicator value	0.5%	0.5%	0.5%	0.5%	0.5%	0.5%	0.5%	0.6%

Licensee Comments: none

Safety System Unavailability, Residual Heat Removal System



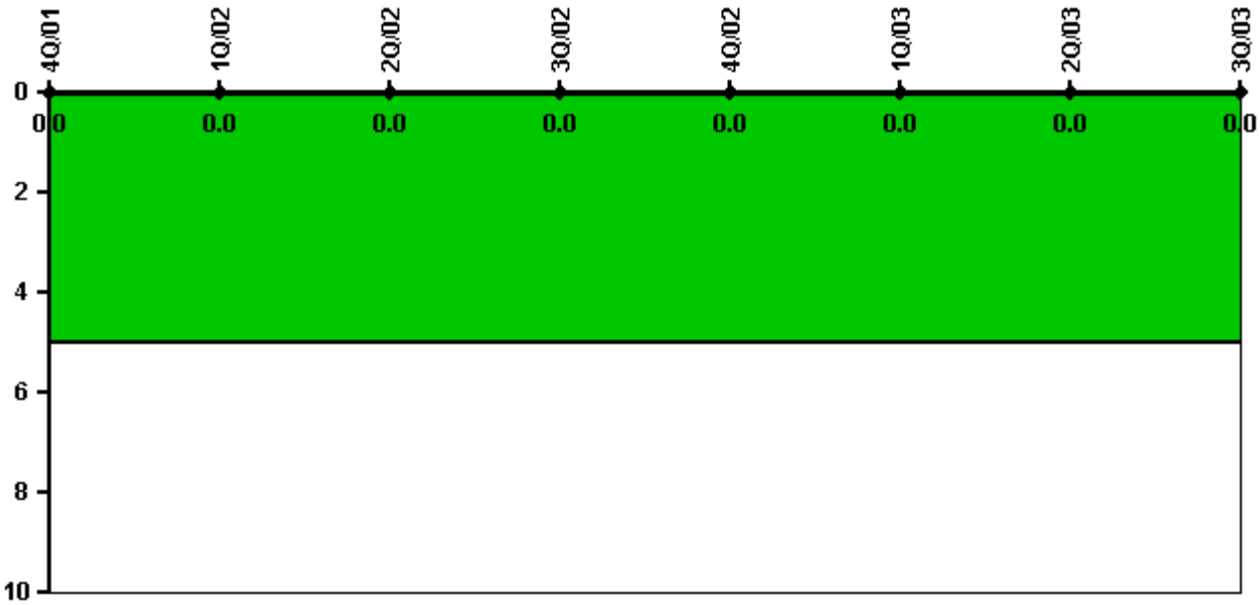
Thresholds: White > 1.5% Yellow > 5.0% Red > 10.0%

Notes

Safety System Unavailability, Residual Heat Removal System	4Q/01	1Q/02	2Q/02	3Q/02	4Q/02	1Q/03	2Q/03	3Q/03
Train 1								
Planned unavailable hours	0.80	1.20	43.17	52.87	0	0.42	3.80	14.42
Unplanned unavailable hours	0	0	0	0	0	0	0	0
Fault exposure hours	0	0	0	0	0	0	0	0
Effective Reset hours	0	0	0	0	0	0	0	0
Required hours	2209.00	2160.00	2183.00	2208.00	1251.95	2160.00	2183.00	2208.00
Train 2								
Planned unavailable hours	0.50	25.00	49.62	83.03	0	0	19.30	0.65
Unplanned unavailable hours	0	0	0	0	0	0	0	0
Fault exposure hours	0	0	0	0	0	0	0	0
Effective Reset hours	0	0	0	0	0	0	0	0
Required hours	2209.00	2160.00	2183.00	2208.00	1251.95	2160.00	2183.00	2208.00
Train 3								
Planned unavailable hours	0	21.30	63.13	109.53	0	0.58	61.00	18.32
Unplanned unavailable hours	0	0	0	0	0	0	0	0
Fault exposure hours	0	0	0	0	0	0	0	0
Effective Reset hours	0	0	0	0	0	0	0	0
Required hours	2209.00	2160.00	2183.00	2208.00	1251.95	2160.00	2183.00	2208.00
Indicator value	1.0%	1.1%	1.1%	1.2%	1.2%	1.0%	1.0%	1.0%

Licensee Comments: none

Safety System Functional Failures (PWR)



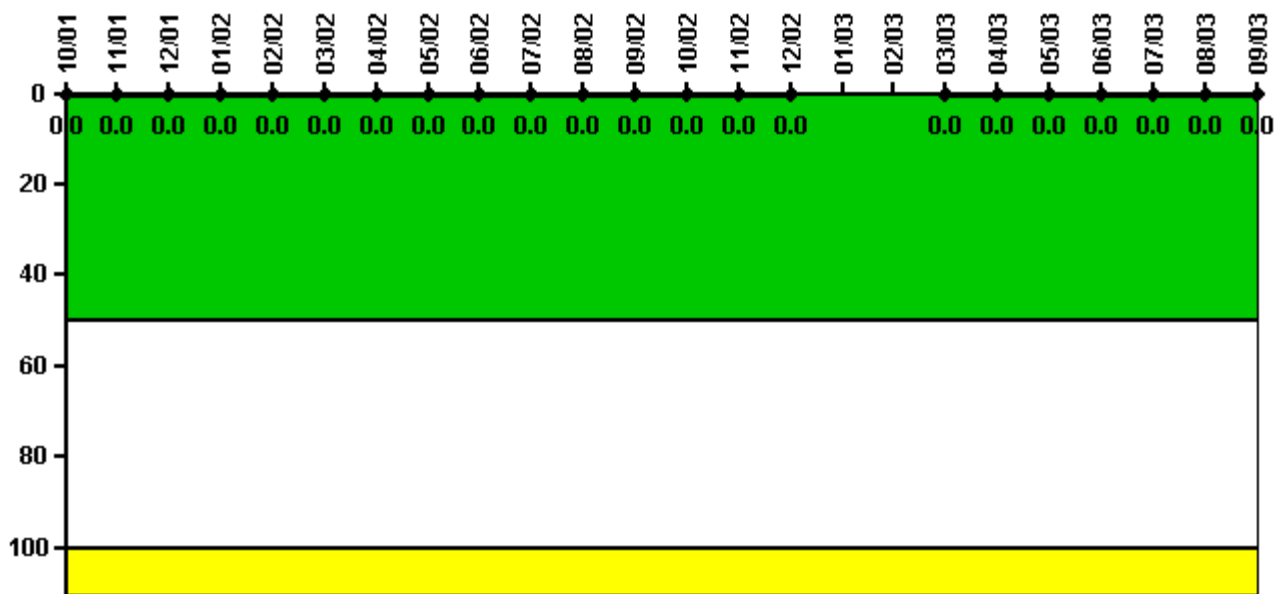
Thresholds: White > 5.0

Notes

Safety System Functional Failures (PWR)	4Q/01	1Q/02	2Q/02	3Q/02	4Q/02	1Q/03	2Q/03	3Q/03
Safety System Functional Failures	0	0	0	0	0	0	0	0
Indicator value	0	0	0	0	0	0	0	0

Licensee Comments: none

Reactor Coolant System Activity



Thresholds: White > 50.0 Yellow > 100.0

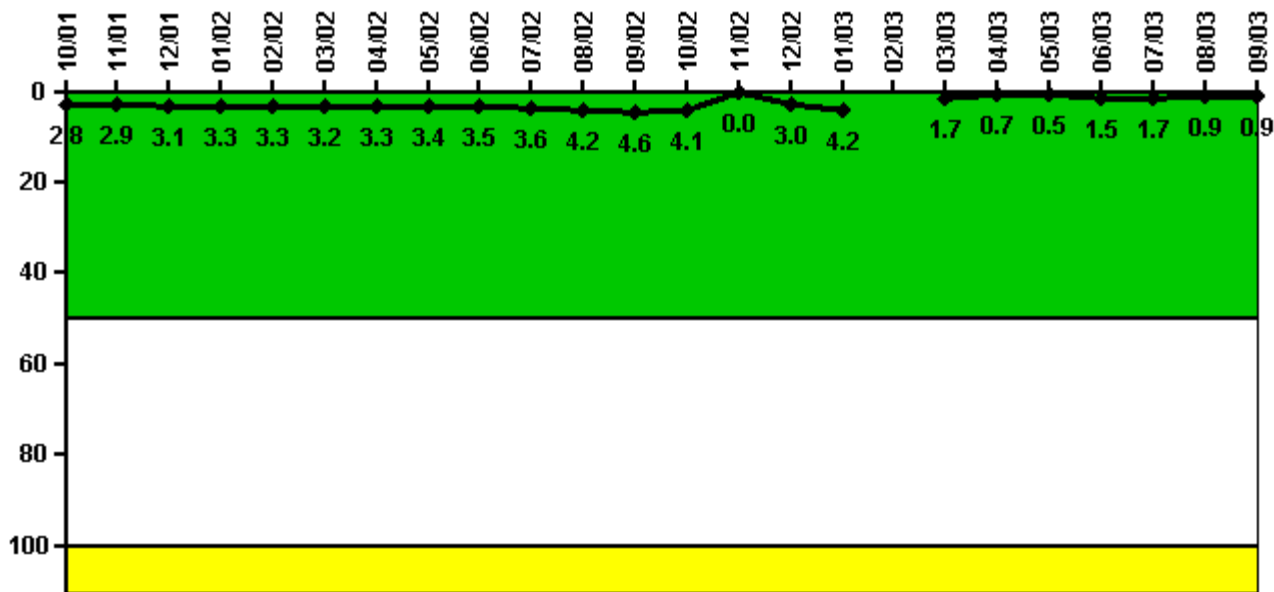
Notes

Reactor Coolant System Activity	10/01	11/01	12/01	1/02	2/02	3/02	4/02	5/02	6/02	7/02	8/02	9/02
Maximum activity	0.000095	0.000094	0.000101	0.000106	0.000119	0.000109	0.000112	0.000112	0.000108	0.000117	0.000116	0.000123
Technical specification limit	1.0	1.0	1.0	1.0	1.0	1.0	1.0	1.0	1.0	1.0	1.0	1.0
Indicator value	0	0	0	0	0	0	0	0	0	0	0	0

Reactor Coolant System Activity	10/02	11/02	12/02	1/03	2/03	3/03	4/03	5/03	6/03	7/03	8/03	9/03
Maximum activity	0	0	0.000057	N/A	N/A	0.000051	0.000072	0.000060	0.000072	0.000065	0.000072	0.000075
Technical specification limit	1.0	1.0	1.0	1.0	1.0	1.0	1.0	1.0	1.0	1.0	1.0	1.0
Indicator value	0	0	0	N/A	N/A	0	0	0	0	0	0	0

Licensee Comments: none

Reactor Coolant System Leakage



Thresholds: White > 50.0 Yellow > 100.0

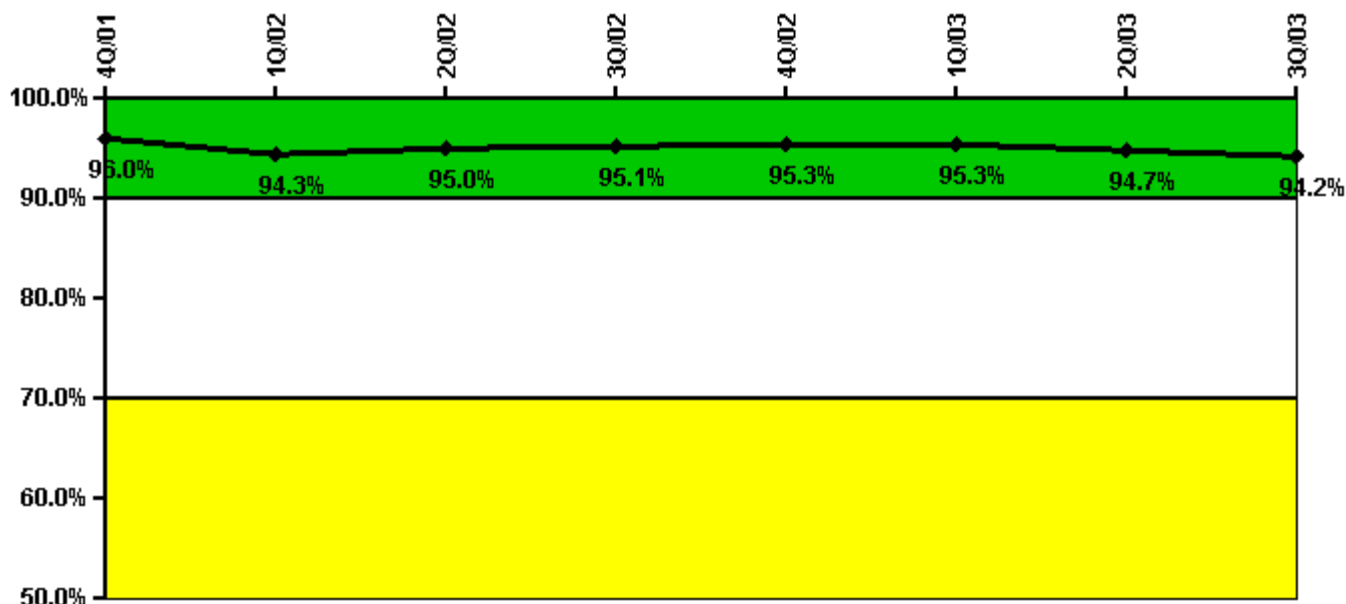
Notes

Reactor Coolant System Leakage	10/01	11/01	12/01	1/02	2/02	3/02	4/02	5/02	6/02	7/02	8/02	9/02
Maximum leakage	0.283	0.294	0.309	0.329	0.331	0.317	0.325	0.344	0.351	0.361	0.415	0.458
Technical specification limit	10.0	10.0	10.0	10.0	10.0	10.0	10.0	10.0	10.0	10.0	10.0	10.0
Indicator value	2.8	2.9	3.1	3.3	3.3	3.2	3.3	3.4	3.5	3.6	4.2	4.6

Reactor Coolant System Leakage	10/02	11/02	12/02	1/03	2/03	3/03	4/03	5/03	6/03	7/03	8/03	9/03
Maximum leakage	0.410	0	0.302	0.417	N/A	0.168	0.069	0.053	0.145	0.168	0.091	0.087
Technical specification limit	10.0	10.0	10.0	10.0	10.0	10.0	10.0	10.0	10.0	10.0	10.0	10.0
Indicator value	4.1	0	3.0	4.2	N/A	1.7	0.7	0.5	1.5	1.7	0.9	0.9

Licensee Comments: none

Drill/Exercise Performance



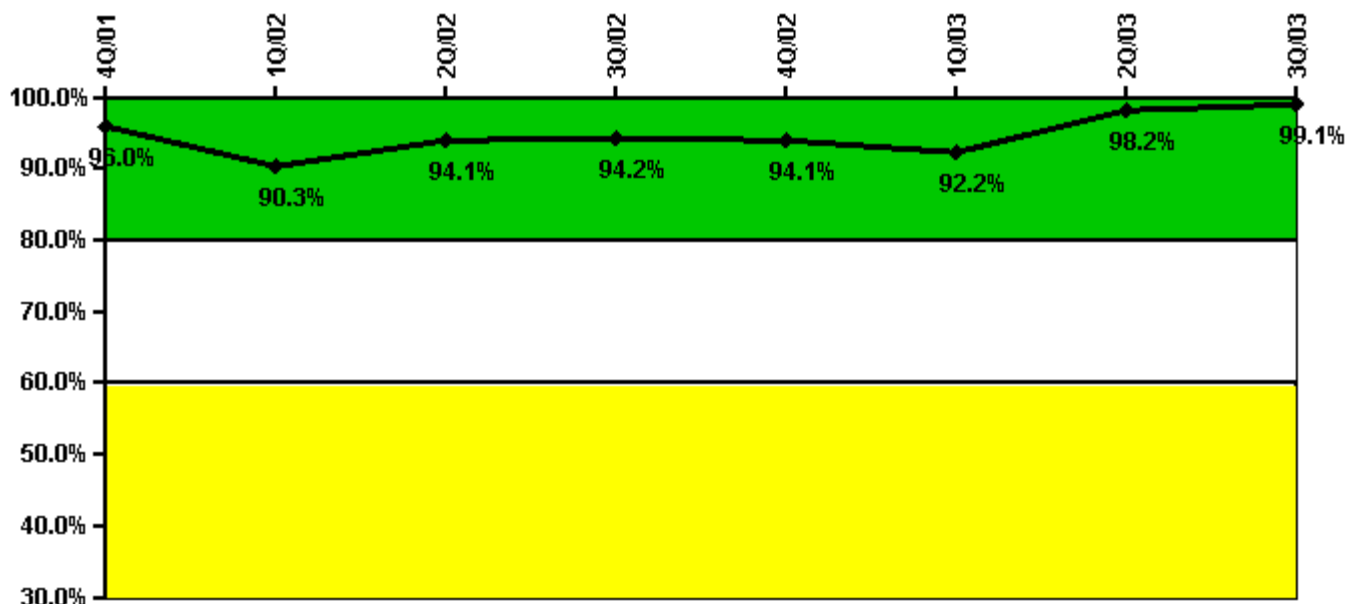
Thresholds: White < 90.0% Yellow < 70.0%

Notes

Drill/Exercise Performance	4Q/01	1Q/02	2Q/02	3Q/02	4Q/02	1Q/03	2Q/03	3Q/03
Successful opportunities	78.0	33.0	28.0	33.0	0	0	61.0	10.0
Total opportunities	80.0	37.0	28.0	34.0	0	0	67.0	12.0
Indicator value	96.0%	94.3%	95.0%	95.1%	95.3%	95.3%	94.7%	94.2%

Licensee Comments: none

ERO Drill Participation



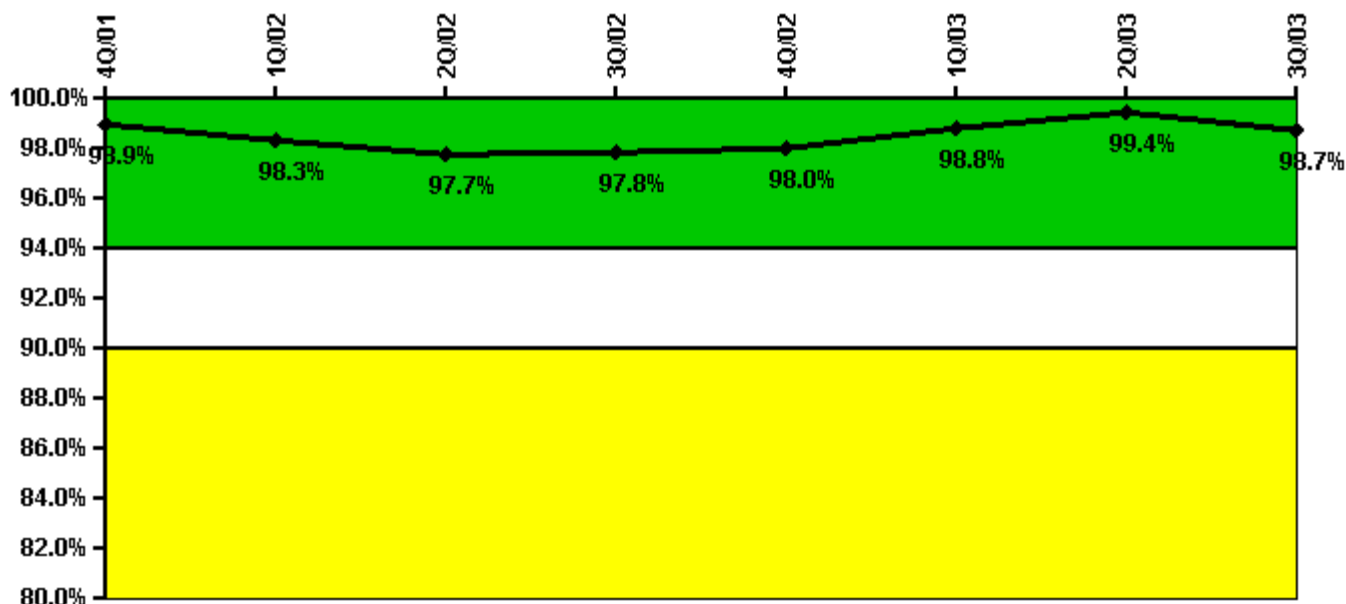
Thresholds: White < 80.0% Yellow < 60.0%

Notes

ERO Drill Participation	4Q/01	1Q/02	2Q/02	3Q/02	4Q/02	1Q/03	2Q/03	3Q/03
Participating Key personnel	120.0	112.0	111.0	113.0	111.0	107.0	111.0	110.0
Total Key personnel	125.0	124.0	118.0	120.0	118.0	116.0	113.0	111.0
Indicator value	96.0%	90.3%	94.1%	94.2%	94.1%	92.2%	98.2%	99.1%

Licensee Comments: none

Alert & Notification System



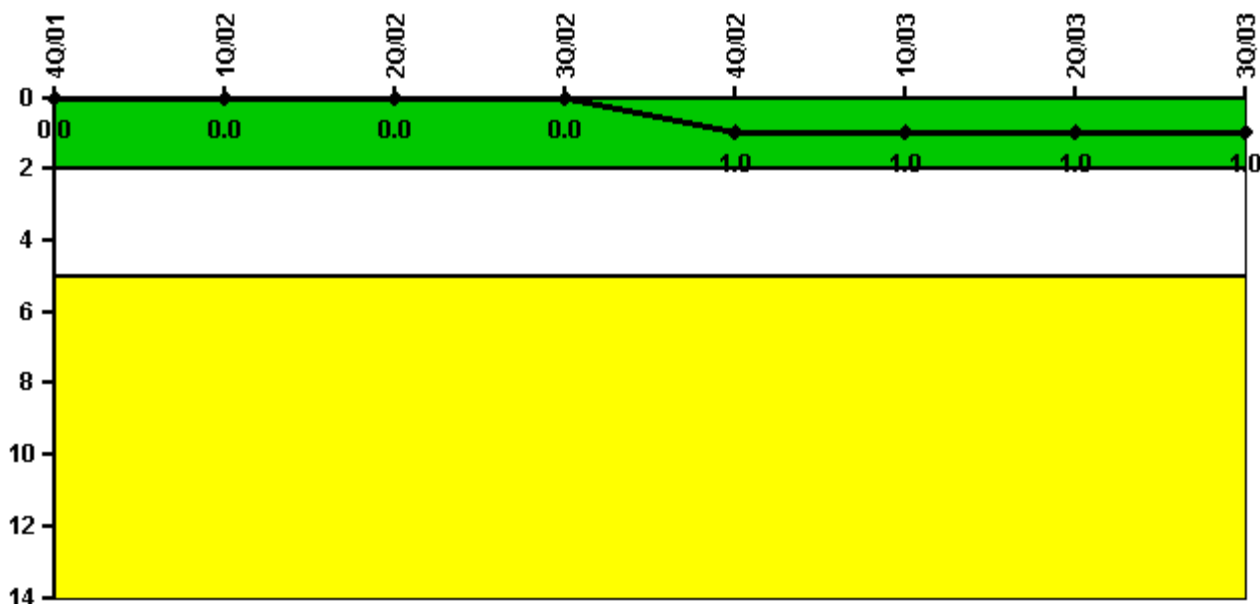
Thresholds: White < 94.0% Yellow < 90.0%

Notes

Alert & Notification System	4Q/01	1Q/02	2Q/02	3Q/02	4Q/02	1Q/03	2Q/03	3Q/03
Successful siren-tests	220	186	218	190	253	224	192	215
Total sirens-tests	224	192	224	192	256	224	192	224
Indicator value	98.9%	98.3%	97.7%	97.8%	98.0%	98.8%	99.4%	98.7%

Licensee Comments: none

Occupational Exposure Control Effectiveness



Thresholds: White > 2.0 Yellow > 5.0

Notes

Occupational Exposure Control Effectiveness	4Q/01	1Q/02	2Q/02	3Q/02	4Q/02	1Q/03	2Q/03	3Q/03
High radiation area occurrences	0	0	0	0	1	0	0	0
Very high radiation area occurrences	0	0	0	0	0	0	0	0
Unintended exposure occurrences	0	0	0	0	0	0	0	0
Indicator value	0	0	0	0	1	1	1	1

Licensee Comments: none

RETS/ODCM Radiological Effluent



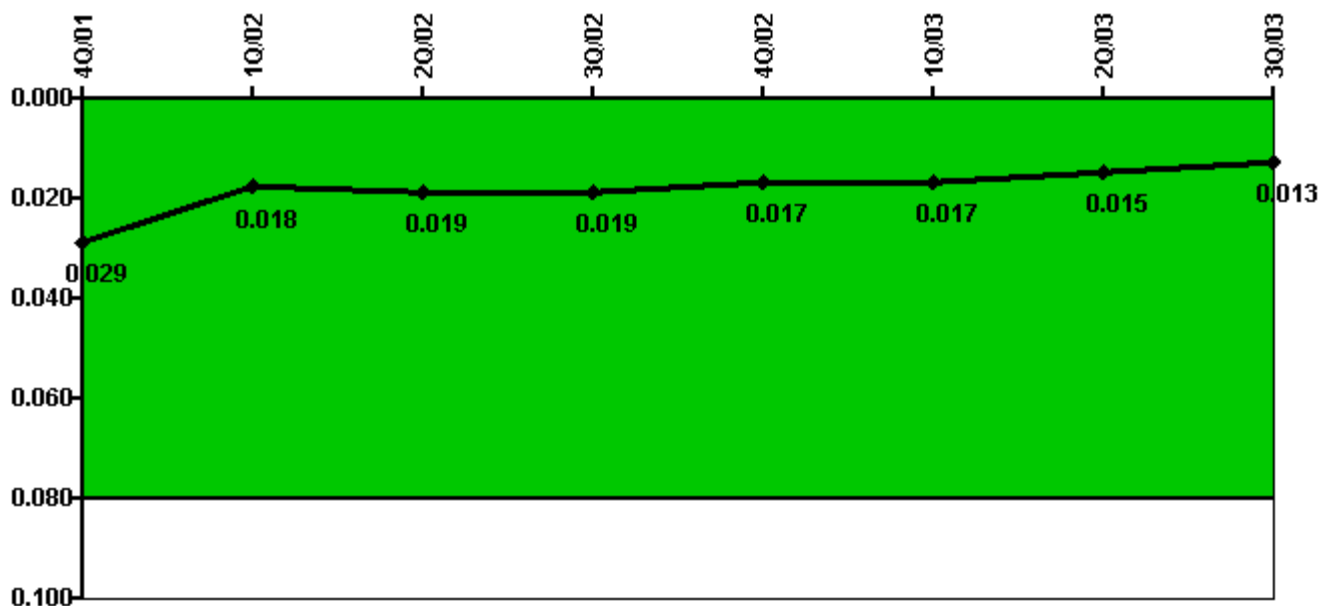
Thresholds: White > 1.0 Yellow > 3.0

Notes

RETS/ODCM Radiological Effluent	4Q/01	1Q/02	2Q/02	3Q/02	4Q/02	1Q/03	2Q/03	3Q/03
RETS/ODCM occurrences	0	0	0	0	0	0	0	0
Indicator value	0	0	0	0	0	0	0	0

Licensee Comments: none

Protected Area Security Performance Index



Thresholds: White > 0.080

Notes

Protected Area Security Performance Index	4Q/01	1Q/02	2Q/02	3Q/02	4Q/02	1Q/03	2Q/03	3Q/03
IDS compensatory hours	143.90	77.50	139.70	107.90	82.10	76.90	76.40	133.80
CCTV compensatory hours	16.6	11.9	41.3	97.0	4.8	11.9	14.5	35.9
IDS normalization factor	2.20	2.20	2.20	2.20	2.20	2.20	2.20	2.20
CCTV normalization factor	1.3	1.3	1.3	1.3	1.3	1.3	1.3	1.3
Index Value	0.029	0.018	0.019	0.019	0.017	0.017	0.015	0.013

Licensee Comments: none

Personnel Screening Program



Thresholds: White > 2.0 Yellow > 5.0

Notes

Personnel Screening Program	4Q/01	1Q/02	2Q/02	3Q/02	4Q/02	1Q/03	2Q/03	3Q/03
Program failures	0	0	0	0	0	0	0	0
Indicator value	0	0	0	0	0	0	0	0

Licensee Comments: none

FFD/Personnel Reliability



Thresholds: White > 2.0 Yellow > 5.0

Notes

FFD/Personnel Reliability	4Q/01	1Q/02	2Q/02	3Q/02	4Q/02	1Q/03	2Q/03	3Q/03
Program Failures	0	0	0	0	0	0	0	0
Indicator value	0	0	0	0	0	0	0	0

Licensee Comments: none

▲ [PI Summary](#) | [Inspection Findings Summary](#) | [Reactor Oversight Process](#)

Last Modified: October 22, 2003