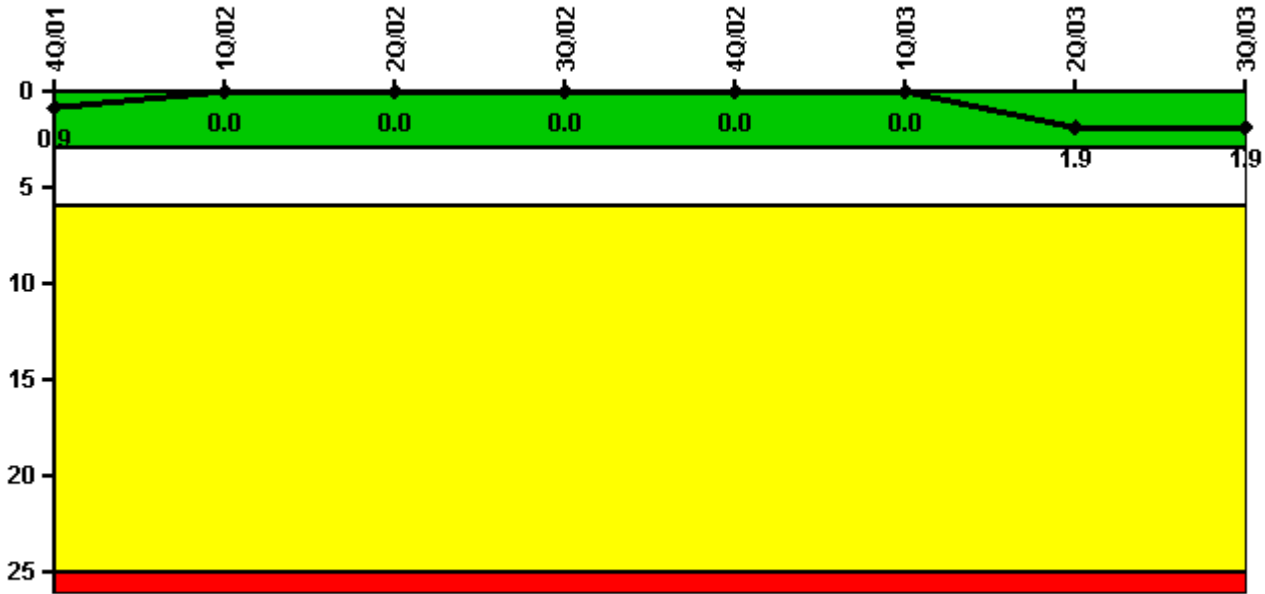


Saint Lucie 2

3Q/2003 Performance Indicators

Licensee's General Comments: none

Unplanned Scrams per 7000 Critical Hrs



Thresholds: White > 3.0 Yellow > 6.0 Red > 25.0

Notes

Unplanned Scrams per 7000 Critical Hrs	4Q/01	1Q/02	2Q/02	3Q/02	4Q/02	1Q/03	2Q/03	3Q/03
Unplanned scrams	0	0	0	0	0	0	2.0	0
Critical hours	1567.0	2145.4	2183.0	2208.0	2209.0	2160.0	841.2	2208.0
Indicator value	0.9	0	0	0	0	0	1.9	1.9

Licensee Comments: none

Scrams with Loss of Normal Heat Removal



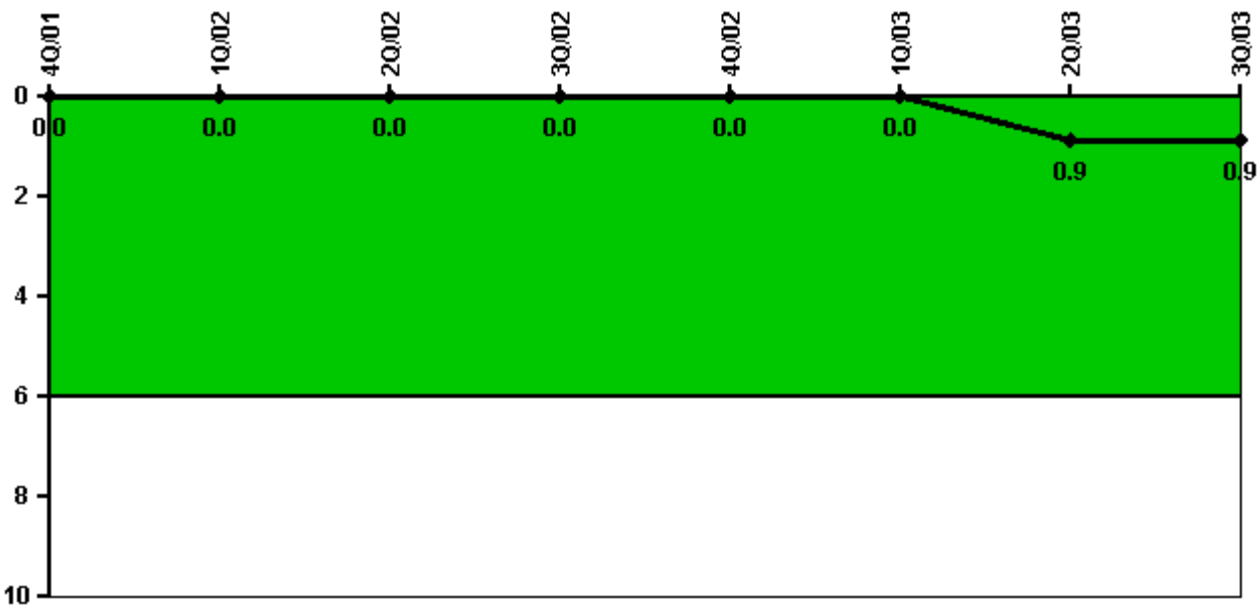
Thresholds: White > 2.0 Yellow > 10.0 Red > 20.0

Notes

Scrams with Loss of Normal Heat Removal	4Q/01	1Q/02	2Q/02	3Q/02	4Q/02	1Q/03	2Q/03	3Q/03
Scrams	0	0	0	0	0	0	0	0
Indicator value	0	0	0	0	0	0	0	0

Licensee Comments: none

Unplanned Power Changes per 7000 Critical Hrs



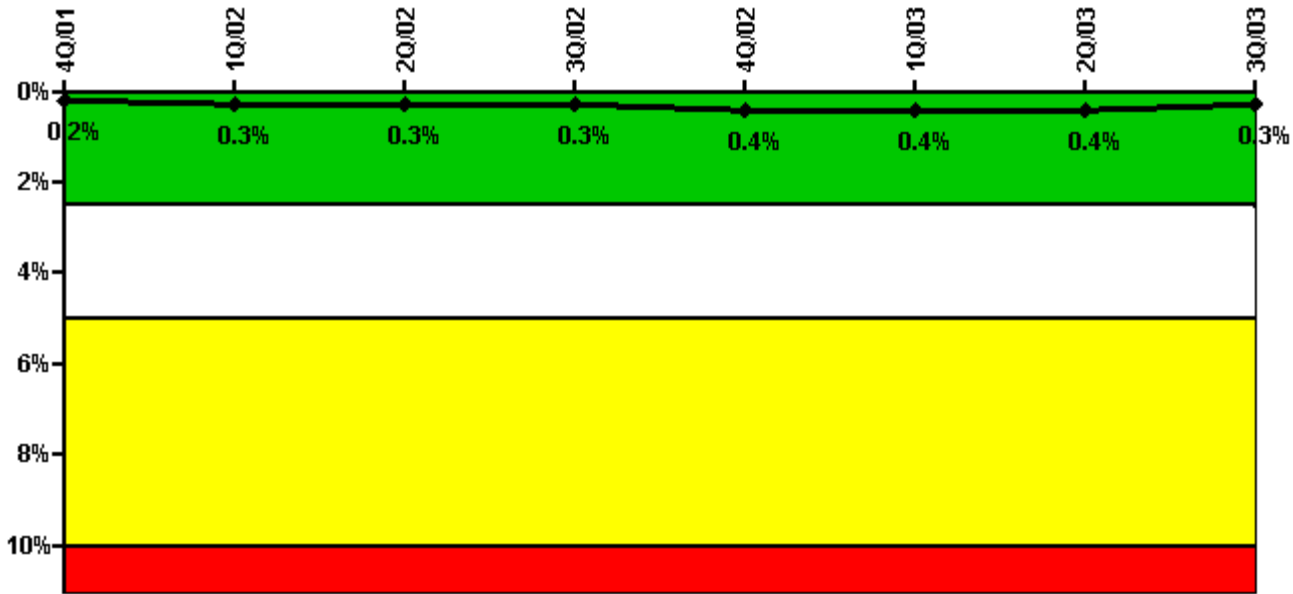
Thresholds: White > 6.0

Notes

Unplanned Power Changes per 7000 Critical Hrs	4Q/01	1Q/02	2Q/02	3Q/02	4Q/02	1Q/03	2Q/03	3Q/03
Unplanned power changes	0	0	0	0	0	0	1.0	0
Critical hours	1567.0	2145.4	2183.0	2208.0	2209.0	2160.0	841.2	2208.0
Indicator value	0	0	0	0	0	0	0.9	0.9

Licensee Comments: none

Safety System Unavailability, Emergency AC Power



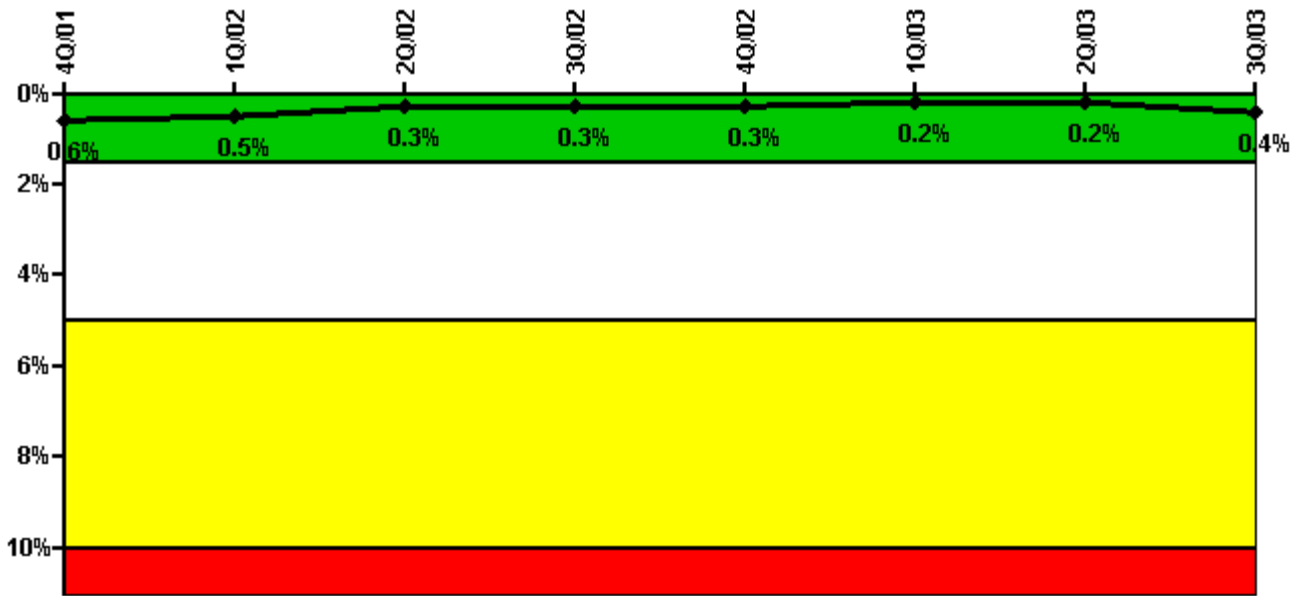
Thresholds: White > 2.5% Yellow > 5.0% Red > 10.0%

Notes

Safety System Unavailability, Emergency AC Power	4Q/01	1Q/02	2Q/02	3Q/02	4Q/02	1Q/03	2Q/03	3Q/03
Train 1								
Planned unavailable hours	3.60	5.40	5.90	6.40	7.00	9.00	3.90	6.50
Unplanned unavailable hours	0	16.00	1.90	0	0	0	0	0
Fault exposure hours	0	0	0	0	0	0	0	0
Effective Reset hours	0	0	0	0	0	0	0	0
Required hours	1941.00	2160.00	2183.00	2208.00	2209.00	2160.00	1697.20	2208.00
Train 2								
Planned unavailable hours	3.60	6.20	5.90	6.50	7.60	5.60	4.30	7.20
Unplanned unavailable hours	0	0	0	0	0	0	0	8.20
Fault exposure hours	0	0	0	0	0	0	0	0
Effective Reset hours	0	0	0	0	0	0	0	0
Required hours	1941.00	2160.00	2183.00	2208.00	2209.00	2160.00	1697.20	2208.00
Indicator value	0.2%	0.3%	0.3%	0.3%	0.4%	0.4%	0.4%	0.3%

Licensee Comments: none

Safety System Unavailability, High Pressure Injection System (HPSI)



Thresholds: White > 1.5% Yellow > 5.0% Red > 10.0%

Notes

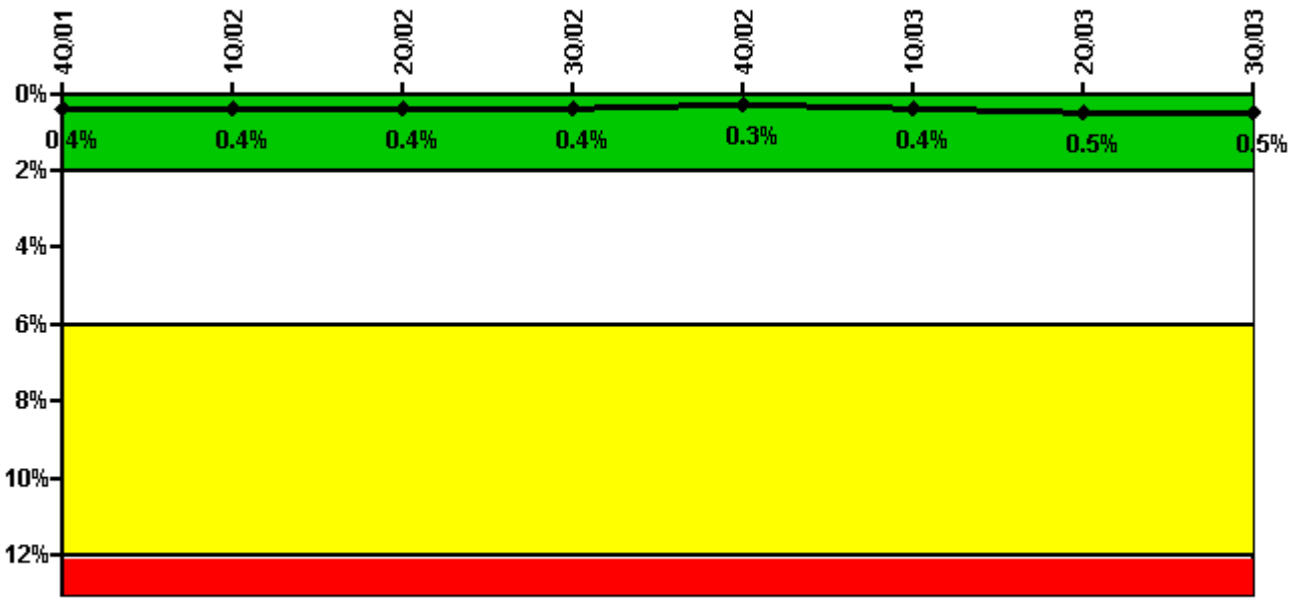
Safety System Unavailability, High Pressure Injection System (HPSI)	4Q/01	1Q/02	2Q/02	3Q/02	4Q/02	1Q/03	2Q/03	3Q/03
Train 1								
Planned unavailable hours	32.30	0.50	6.00	0.90	0.40	3.00	6.10	29.40
Unplanned unavailable hours	0	0	0	0	0	0	0	23.30
Fault exposure hours	0	0	0	0	0	0	0	0
Effective Reset hours	0	0	0	0	0	0	0	0
Required hours	1679.20	2160.00	2183.00	2208.00	2209.00	2160.00	1132.00	2208.00
Train 2								
Planned unavailable hours	38.00	0.90	7.00	0.60	1.20	2.10	2.40	32.80
Unplanned unavailable hours	0	0	0	0	0	0	0	0
Fault exposure hours	0	0	0	0	0	0	0	0
Effective Reset hours	0	0	0	0	0	0	0	0
Required hours	1679.20	2160.00	2183.00	2208.00	2209.00	2160.00	1132.00	2208.00
Indicator value	0.6%	0.5%	0.3%	0.3%	0.3%	0.2%	0.2%	0.4%

Licensee Comments:

3Q/03: 2A HPSI Train, 316.6 hours of T/2 Fault Exposure Hours.

3Q/03: 2A HPSI Train, 316.6 hours of T/2 Fault Exposure Hours.

Safety System Unavailability, Heat Removal System (AFW)



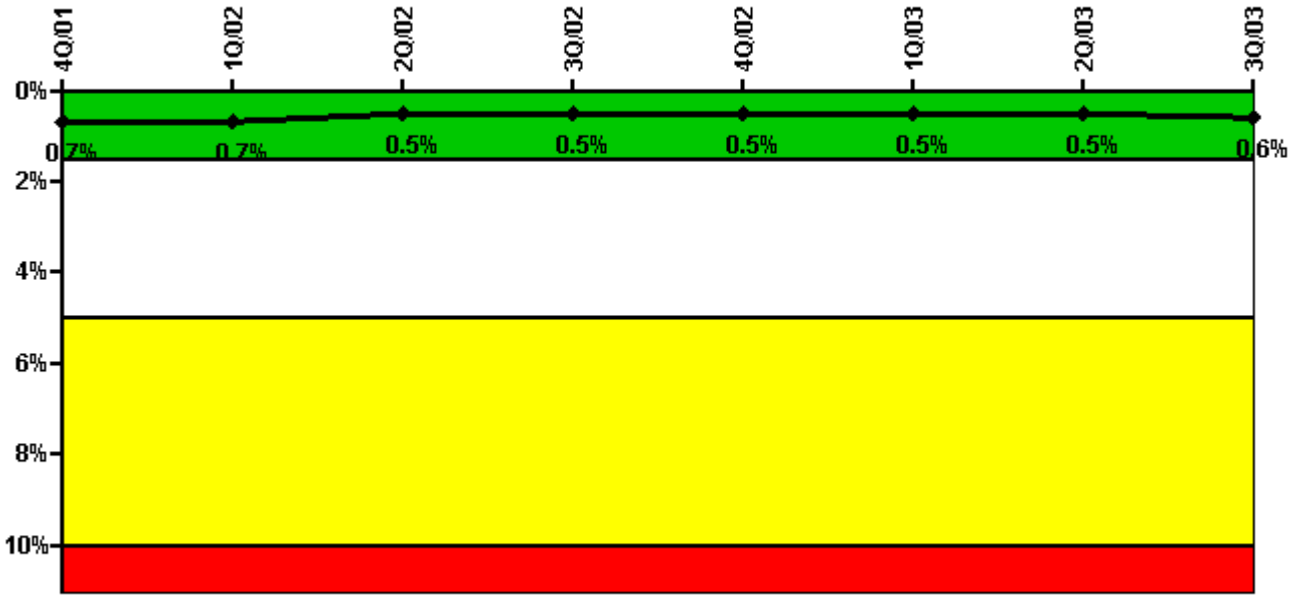
Thresholds: White > 2.0% Yellow > 6.0% Red > 12.0%

Notes

Safety System Unavailability, Heat Removal System (AFW)	4Q/01	1Q/02	2Q/02	3Q/02	4Q/02	1Q/03	2Q/03	3Q/03
Train 1								
Planned unavailable hours	3.50	2.80	10.10	1.30	2.00	13.10	2.40	1.50
Unplanned unavailable hours	2.50	0	0	0	0	0	0	0
Fault exposure hours	0	0	0	0	0	0	0	0
Effective Reset hours	0	0	0	0	0	0	0	0
Required hours	1656.00	2160.00	2183.00	2208.00	2209.00	2160.00	1180.90	2208.00
Train 2								
Planned unavailable hours	2.20	1.30	1.90	2.80	2.20	10.30	2.30	10.00
Unplanned unavailable hours	0	0	0	0	0	0	0	0
Fault exposure hours	0	0	0	0	0	0	0	0
Effective Reset hours	0	0	0	0	0	0	0	0
Required hours	1656.00	2160.00	2183.00	2208.00	2209.00	2160.00	1180.90	2208.00
Train 3								
Planned unavailable hours	18.20	11.30	11.50	7.40	14.20	18.70	2.20	7.70
Unplanned unavailable hours	7.80	0	0	0	0	0	62.70	0
Fault exposure hours	0	0	0	0	0	0	0	0
Effective Reset hours	0	0	0	0	0	0	0	0
Required hours	1656.00	2160.00	2183.00	2208.00	2209.00	2160.00	1180.90	2208.00
Indicator value	0.4%	0.4%	0.4%	0.4%	0.3%	0.4%	0.5%	0.5%

Licensee Comments: none

Safety System Unavailability, Residual Heat Removal System



Thresholds: White > 1.5% Yellow > 5.0% Red > 10.0%

Notes

Safety System Unavailability, Residual Heat Removal System	4Q/01	1Q/02	2Q/02	3Q/02	4Q/02	1Q/03	2Q/03	3Q/03
Train 1								
Planned unavailable hours	63.60	4.10	9.10	49.00	4.00	5.20	0.50	34.70
Unplanned unavailable hours	0	0	0	0	0	0	0	23.30
Fault exposure hours	0	0	0	0	0	0	0	0
Effective Reset hours	0	0	0	0	0	0	0	0
Required hours	1647.90	2160.00	2183.00	2208.00	2209.00	2160.00	1132.00	2208.00
Train 2								
Planned unavailable hours	42.50	2.80	49.90	4.10	4.90	38.40	0.40	45.50
Unplanned unavailable hours	0	0	0	0	0	0	0	0
Fault exposure hours	0	0	0	0	0	0	0	0
Effective Reset hours	0	0	0	0	0	0	0	0
Required hours	1647.90	2160.00	2183.00	2208.00	2209.00	2160.00	1132.00	2208.00
Train 3								
Planned unavailable hours	0	0	0	0	0	0	0	0
Unplanned unavailable hours	0	0	0	0	0	0	0	0
Fault exposure hours	0	0	0	0	0	0	0	0
Effective Reset hours	0	0	0	0	0	0	0	0
Required hours	553.20	0	0	0	0	0	693.90	0
Train 4								

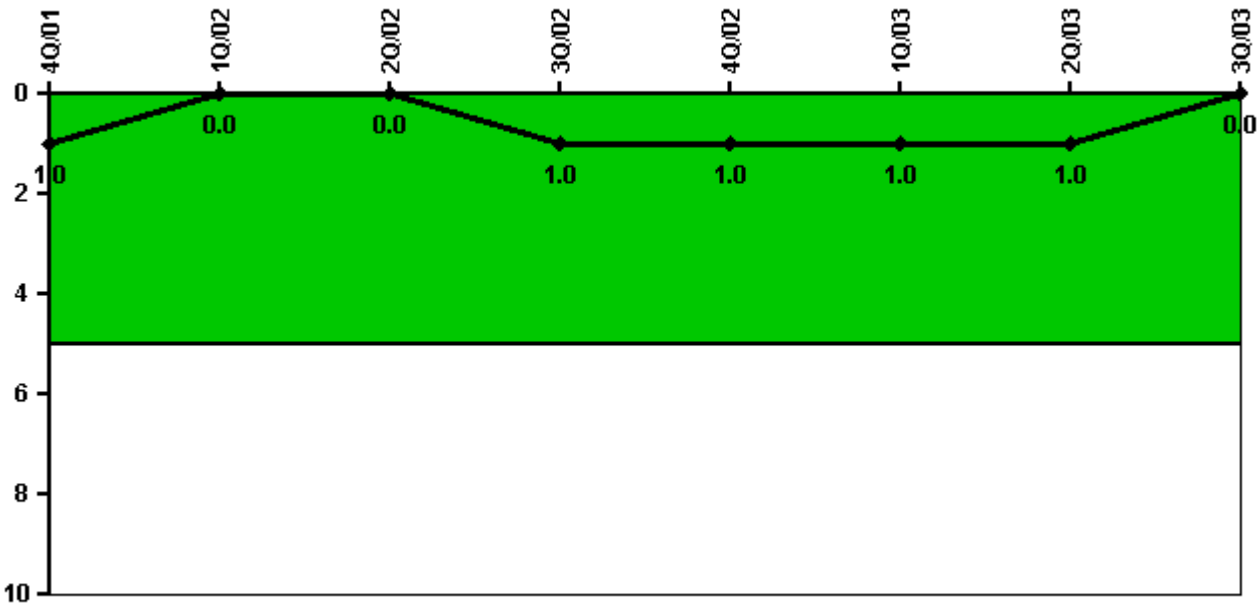
Planned unavailable hours	0	0	0	0	0	0	0	0
Unplanned unavailable hours	0	0	0	0	0	0	0	0
Fault exposure hours	0	0	0	0	0	0	0	0
Effective Reset hours	0	0	0	0	0	0	0	0
Required hours	553.20	0	0	0	0	0	693.90	0
Indicator value	0.7%	0.7%	0.5%	0.5%	0.5%	0.5%	0.5%	0.6%

Licensee Comments:

3Q/03: Train 1, 316.6 hours of T/2 Fault Exposure Hours.

3Q/03: Train 1, 316.6 hours of T/2 Fault Exposure Hours.

Safety System Functional Failures (PWR)



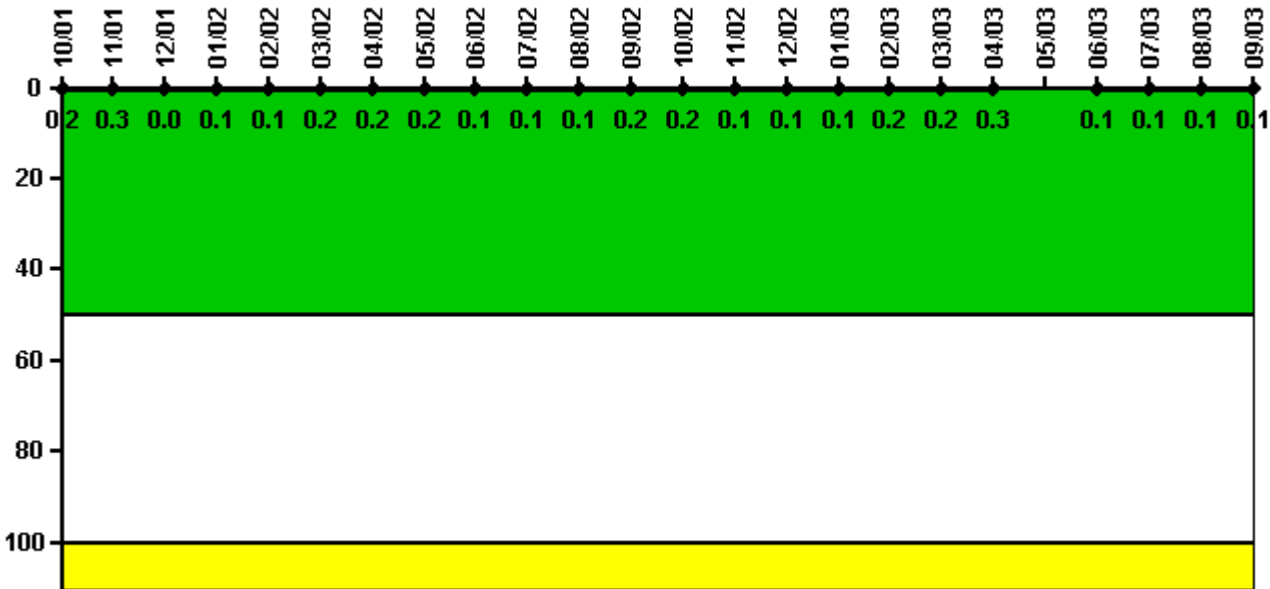
Thresholds: White > 5.0

Notes

Safety System Functional Failures (PWR)	4Q/01	1Q/02	2Q/02	3Q/02	4Q/02	1Q/03	2Q/03	3Q/03
Safety System Functional Failures	0	0	0	1	0	0	0	0
Indicator value	1	0	0	1	1	1	1	0

Licensee Comments: none

Reactor Coolant System Activity



Thresholds: White > 50.0 Yellow > 100.0

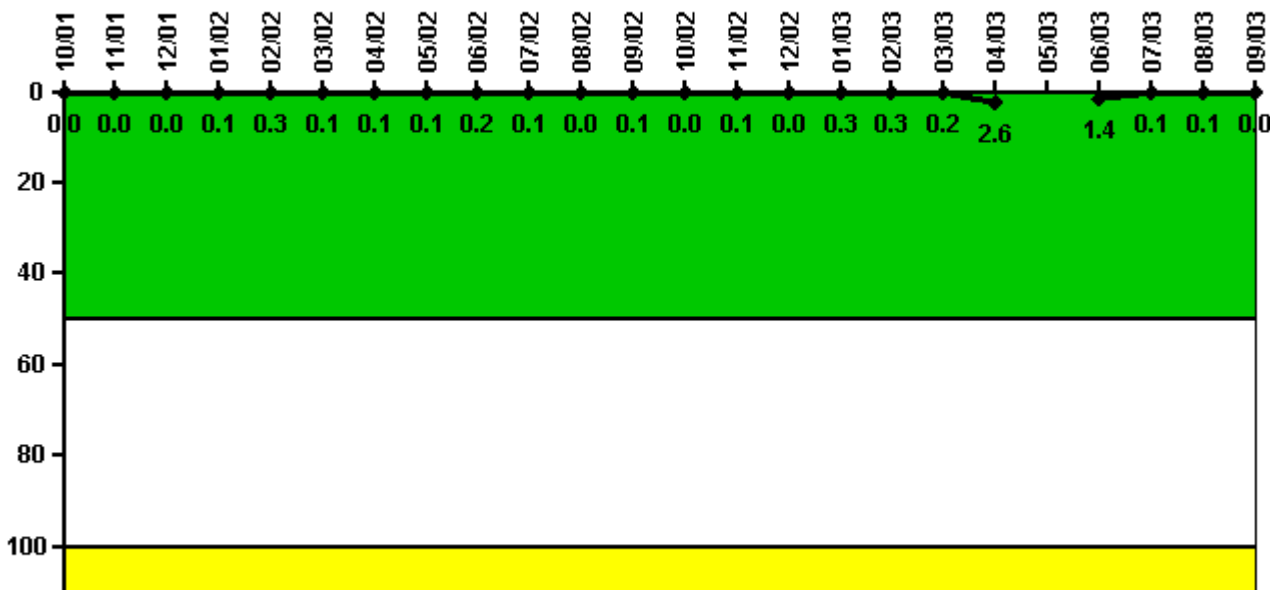
Notes

Reactor Coolant System Activity	10/01	11/01	12/01	1/02	2/02	3/02	4/02	5/02	6/02	7/02	8/02	9/02
Maximum activity	0.001660	0.002580	0.000466	0.000991	0.001320	0.001890	0.001580	0.001610	0.001460	0.001490	0.001470	0.001730
Technical specification limit	1.0	1.0	1.0	1.0	1.0	1.0	1.0	1.0	1.0	1.0	1.0	1.0
Indicator value	0.2	0.3	0	0.1	0.1	0.2	0.2	0.2	0.1	0.1	0.1	0.2

Reactor Coolant System Activity	10/02	11/02	12/02	1/03	2/03	3/03	4/03	5/03	6/03	7/03	8/03	9/03
Maximum activity	0.001680	0.001380	0.001330	0.001400	0.001660	0.001590	0.003190	N/A	0.000944	0.001140	0.001040	0.001170
Technical specification limit	1.0	1.0	1.0	1.0	1.0	1.0	1.0	1.0	1.0	1.0	1.0	1.0
Indicator value	0.2	0.1	0.1	0.1	0.2	0.2	0.3	N/A	0.1	0.1	0.1	0.1

Licensee Comments: none

Reactor Coolant System Leakage



Thresholds: White > 50.0 Yellow > 100.0

Notes

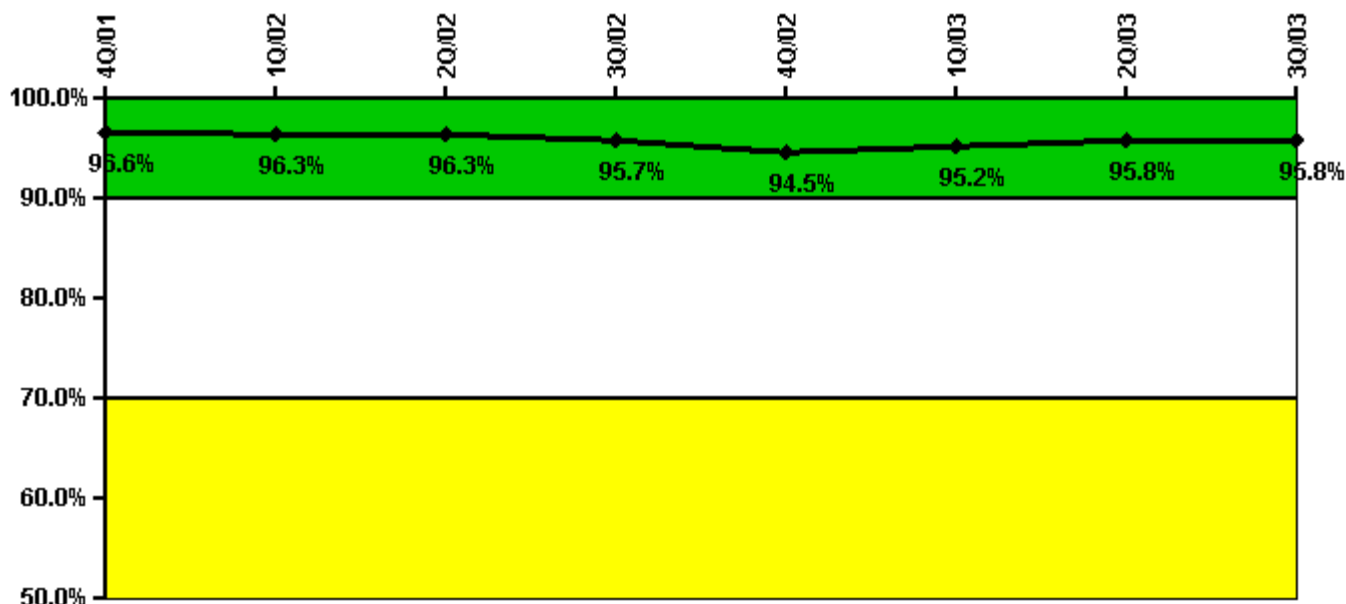
Reactor Coolant System Leakage	10/01	11/01	12/01	1/02	2/02	3/02	4/02	5/02	6/02	7/02	8/02	9/02
Maximum leakage	0.004	0	0	0.010	0.030	0.010	0.010	0.010	0.020	0.005	0	0.007
Technical specification limit	10.0	10.0	10.0	10.0	10.0	10.0	10.0	10.0	10.0	10.0	10.0	10.0
Indicator value	0	0	0	0.1	0.3	0.1	0.1	0.1	0.2	0.1	0	0.1
Reactor Coolant System Leakage	10/02	11/02	12/02	1/03	2/03	3/03	4/03	5/03	6/03	7/03	8/03	9/03
Maximum leakage	0.002	0.005	0	0.030	0.030	0.015	0.260	N/A	0.135	0.007	0.010	0.004
Technical specification limit	10.0	10.0	10.0	10.0	10.0	10.0	10.0	10.0	10.0	10.0	10.0	10.0
Indicator value	0	0.1	0	0.3	0.3	0.2	2.6	N/A	1.4	0.1	0.1	0

Licensee Comments:

6/03: Plant conditions did not require RCS leakage to be calculated at any time during the entire month of May. Minor correction made to June RCS leakage data.

6/03: Plant conditions did not require RCS leakage to be calculated at any time during the entire month of May. Minor correction made to June RCS leakage data.

Drill/Exercise Performance



Thresholds: White < 90.0% Yellow < 70.0%

Notes

Drill/Exercise Performance	4Q/01	1Q/02	2Q/02	3Q/02	4Q/02	1Q/03	2Q/03	3Q/03
Successful opportunities	12.0	47.0	13.0	70.0	5.0	87.0	48.0	80.0
Total opportunities	13.0	50.0	14.0	73.0	6.0	89.0	50.0	83.0
Indicator value	96.6%	96.3%	96.3%	95.7%	94.5%	95.2%	95.8%	95.8%

Licensee Comments: none

ERO Drill Participation



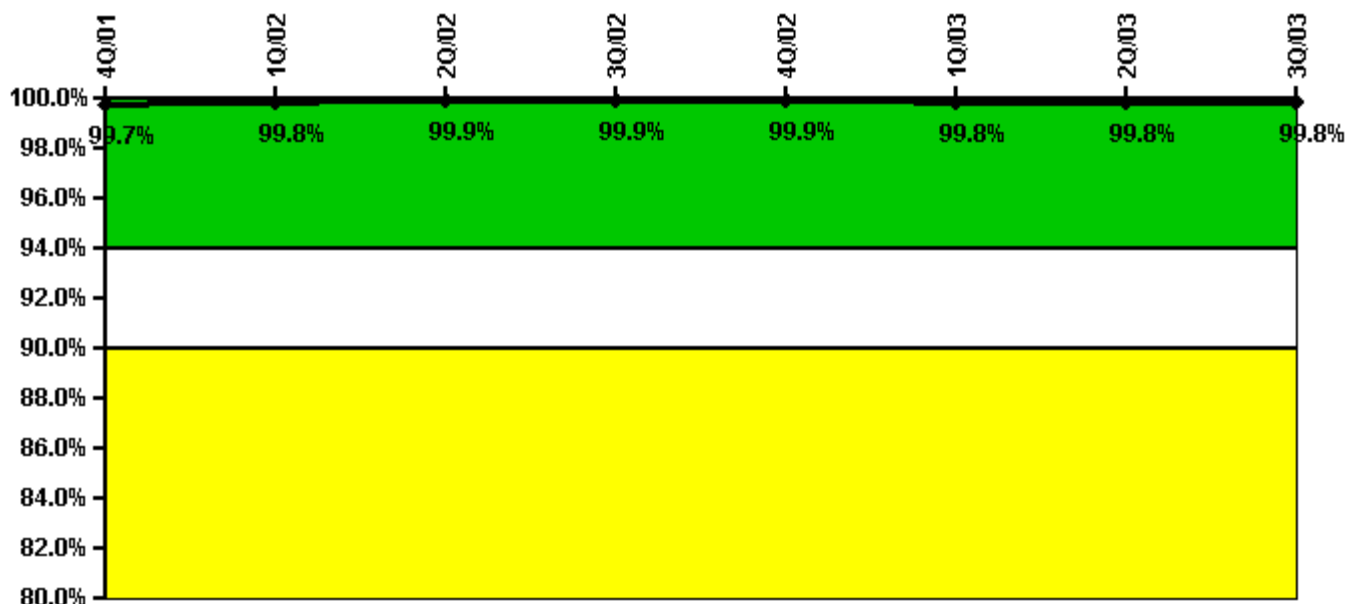
Thresholds: White < 80.0% Yellow < 60.0%

Notes

ERO Drill Participation	4Q/01	1Q/02	2Q/02	3Q/02	4Q/02	1Q/03	2Q/03	3Q/03
Participating Key personnel	72.0	72.0	75.0	79.0	75.0	82.0	84.0	81.0
Total Key personnel	72.0	72.0	75.0	79.0	75.0	82.0	84.0	81.0
Indicator value	100.0%	100.0%	100.0%	100.0%	100.0%	100.0%	100.0%	100.0%

Licensee Comments: none

Alert & Notification System



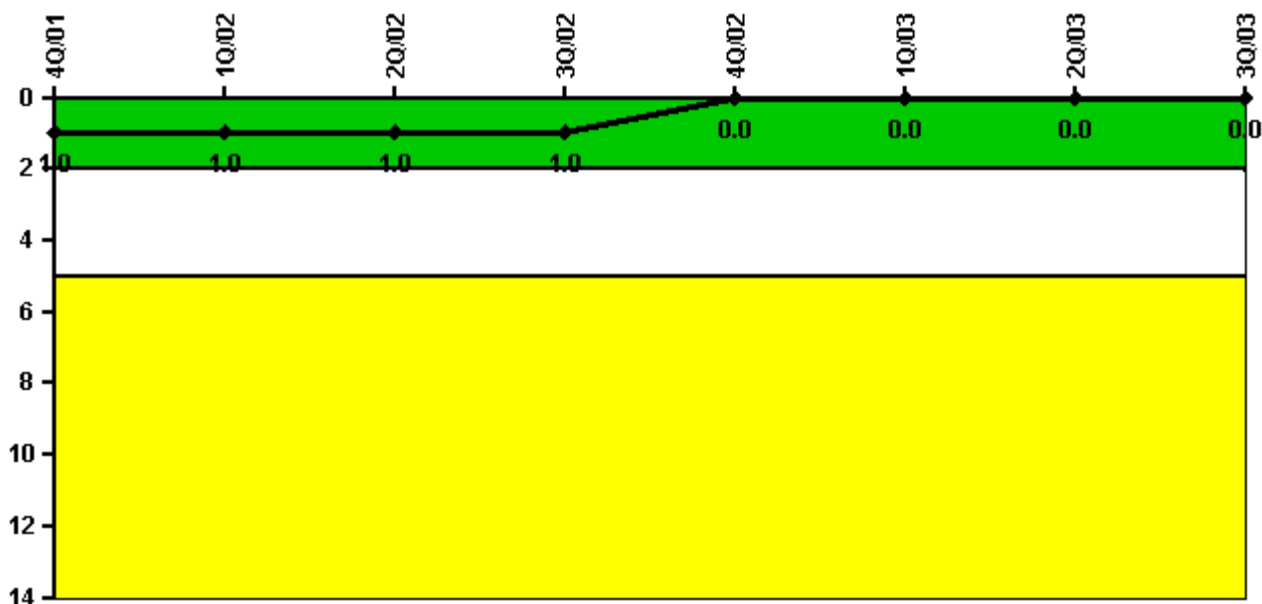
Thresholds: White < 94.0% Yellow < 90.0%

Notes

Alert & Notification System	4Q/01	1Q/02	2Q/02	3Q/02	4Q/02	1Q/03	2Q/03	3Q/03
Successful siren-tests	527	704	527	704	527	709	533	710
Total sirens-tests	528	704	528	704	528	711	534	712
Indicator value	99.7%	99.8%	99.9%	99.9%	99.9%	99.8%	99.8%	99.8%

Licensee Comments: none

Occupational Exposure Control Effectiveness



Thresholds: White > 2.0 Yellow > 5.0

Notes

Occupational Exposure Control Effectiveness	4Q/01	1Q/02	2Q/02	3Q/02	4Q/02	1Q/03	2Q/03	3Q/03
High radiation area occurrences	1	0	0	0	0	0	0	0
Very high radiation area occurrences	0	0	0	0	0	0	0	0
Unintended exposure occurrences	0	0	0	0	0	0	0	0
Indicator value	1	1	1	1	0	0	0	0

Licensee Comments: none

RETS/ODCM Radiological Effluent



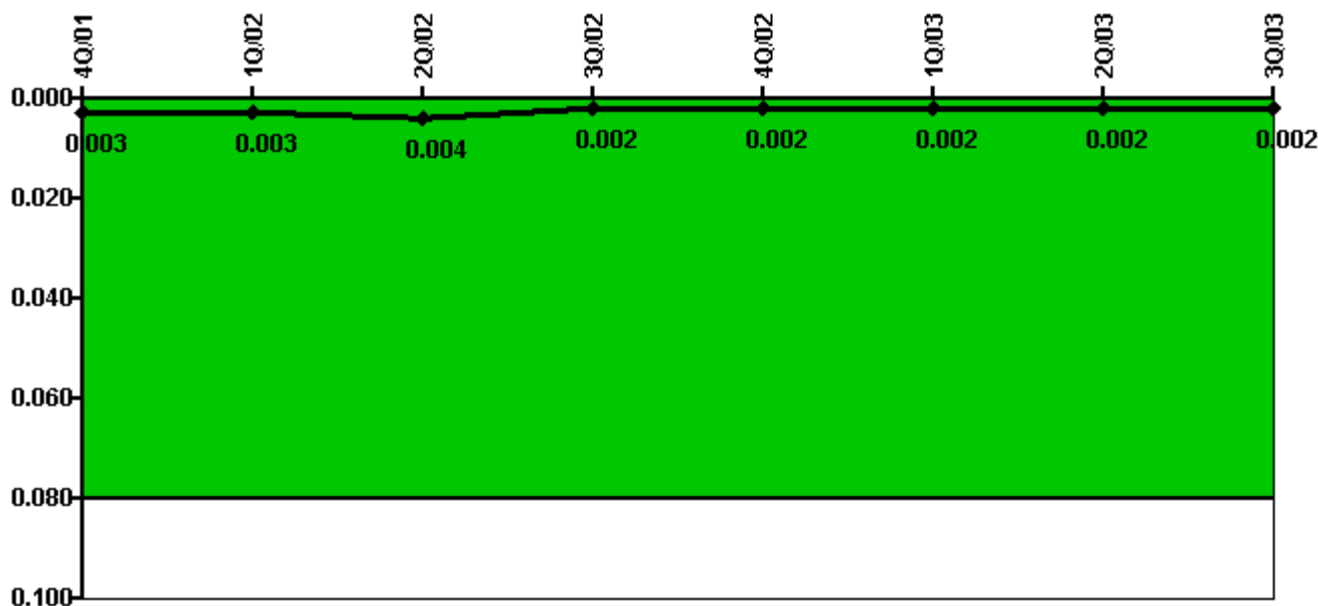
Thresholds: White > 1.0 Yellow > 3.0

Notes

RETS/ODCM Radiological Effluent	4Q/01	1Q/02	2Q/02	3Q/02	4Q/02	1Q/03	2Q/03	3Q/03
RETS/ODCM occurrences	0	0	0	0	0	0	0	0
Indicator value	0	0	0	0	0	0	0	0

Licensee Comments: none

Protected Area Security Performance Index



Thresholds: White > 0.080

Notes

Protected Area Security Performance Index	4Q/01	1Q/02	2Q/02	3Q/02	4Q/02	1Q/03	2Q/03	3Q/03
IDS compensatory hours	2.70	15.60	39.30	6.80	0	4.40	28.80	10.00
CCTV compensatory hours	0	0	0	0	0	0	9.5	0
IDS normalization factor	1.80	1.80	1.80	1.80	1.80	1.80	1.80	1.80
CCTV normalization factor	1.5	1.5	1.5	1.5	1.5	1.5	1.5	1.5
Index Value	0.003	0.003	0.004	0.002	0.002	0.002	0.002	0.002

Licensee Comments: none

Personnel Screening Program



Thresholds: White > 2.0 Yellow > 5.0

Notes

Personnel Screening Program	4Q/01	1Q/02	2Q/02	3Q/02	4Q/02	1Q/03	2Q/03	3Q/03
Program failures	0	0	0	0	0	0	0	0
Indicator value	0	0	0	0	0	0	0	0

Licensee Comments: none

FFD/Personnel Reliability



Thresholds: White > 2.0 Yellow > 5.0

Notes

FFD/Personnel Reliability	4Q/01	1Q/02	2Q/02	3Q/02	4Q/02	1Q/03	2Q/03	3Q/03
Program Failures	0	0	0	0	0	0	0	0
Indicator value	0	0	0	0	0	0	0	0

Licensee Comments: none

▲ [PI Summary](#) | [Inspection Findings Summary](#) | [Reactor Oversight Process](#)

Last Modified: October 28, 2003