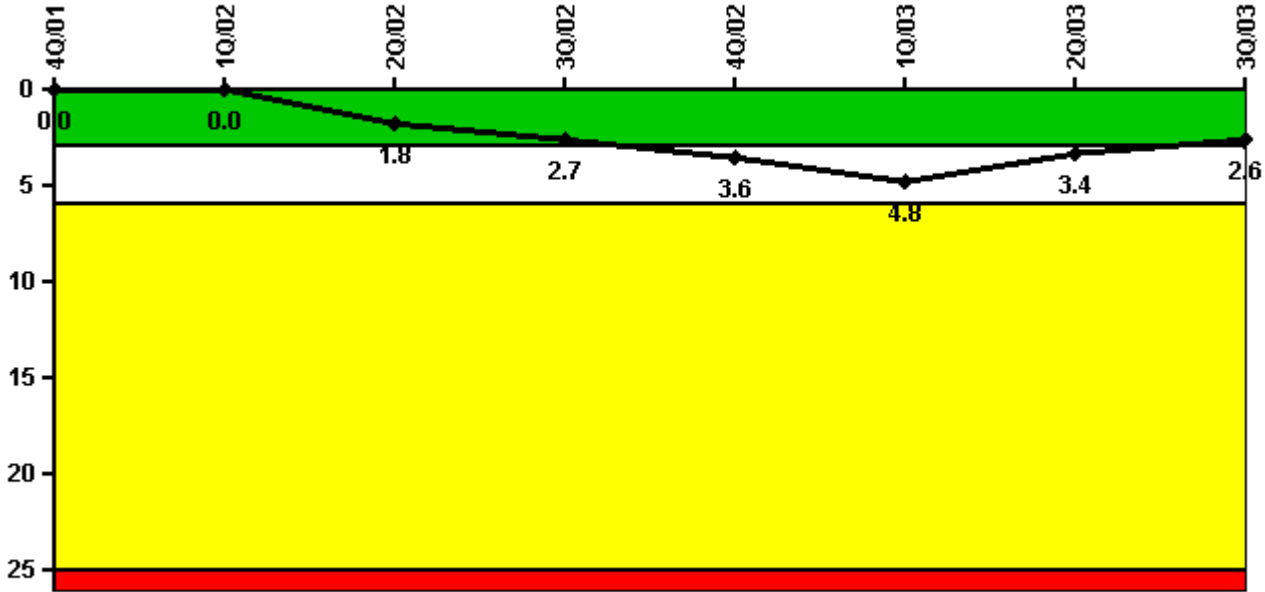


## Sequoyah 2

### 3Q/2003 Performance Indicators

Licensee's General Comments: none

**Unplanned Scrams per 7000 Critical Hrs**



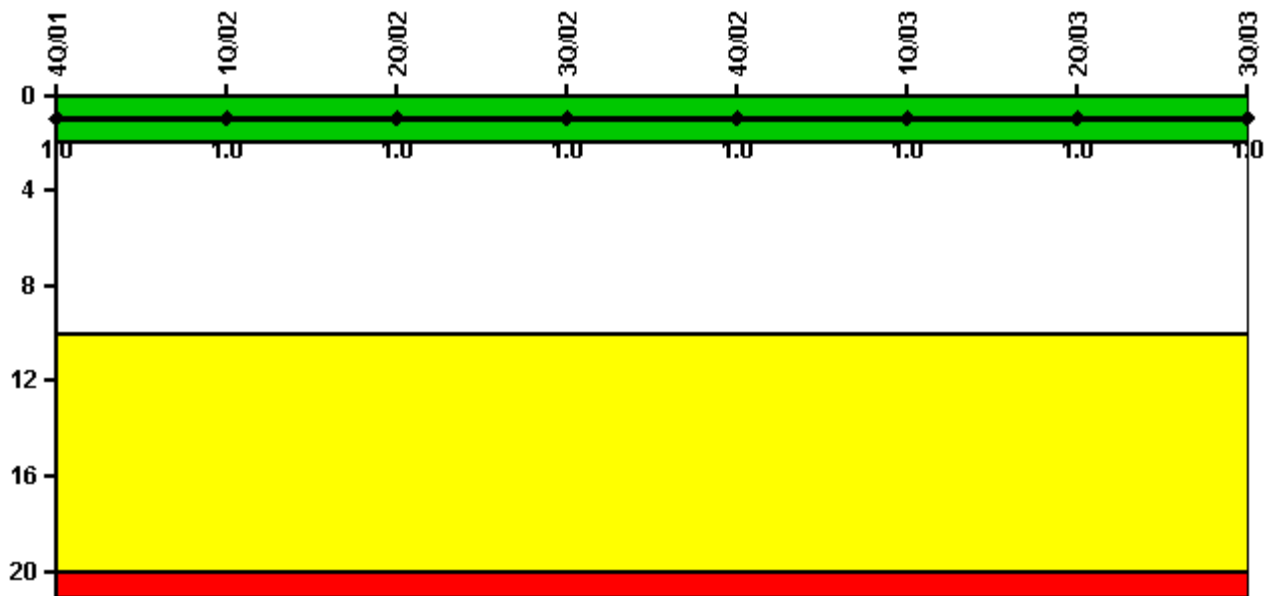
**Thresholds: White > 3.0 Yellow > 6.0 Red > 25.0**

**Notes**

Unplanned Scrams per 7000 Critical Hrs	4Q/01	1Q/02	2Q/02	3Q/02	4Q/02	1Q/03	2Q/03	3Q/03
Unplanned scrams	0	0	2.0	1.0	1.0	1.0	1.0	0
Critical hours	2209.0	2160.0	1310.0	2167.9	2081.3	1756.7	2156.9	2208.0
Indicator value	0	0	1.8	2.7	3.6	4.8	3.4	2.6

Licensee Comments: none

### Scrams with Loss of Normal Heat Removal



Thresholds: White > 2.0 Yellow > 10.0 Red > 20.0

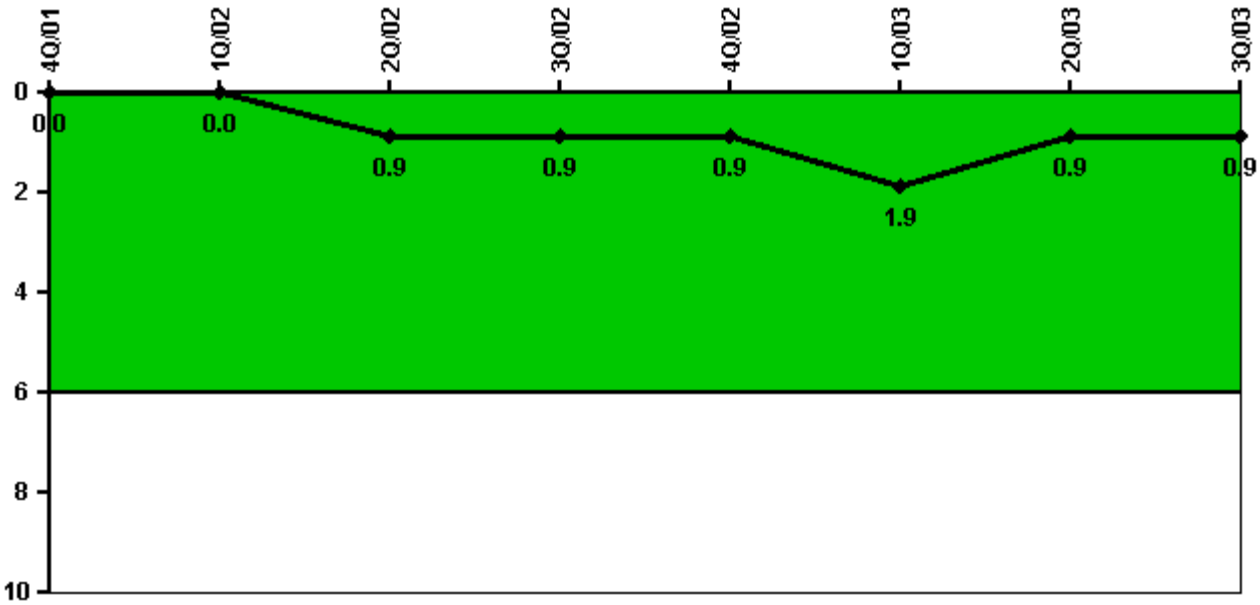
#### Notes

Scrams with Loss of Normal Heat Removal	4Q/01	1Q/02	2Q/02	3Q/02	4Q/02	1Q/03	2Q/03	3Q/03
Scrams	0	0	0	0	0	1.0	0	0
Indicator value	1.0	1.0	1.0	1.0	1.0	1.0	1.0	1.0

Licensee Comments:

3Q/03:

### Unplanned Power Changes per 7000 Critical Hrs



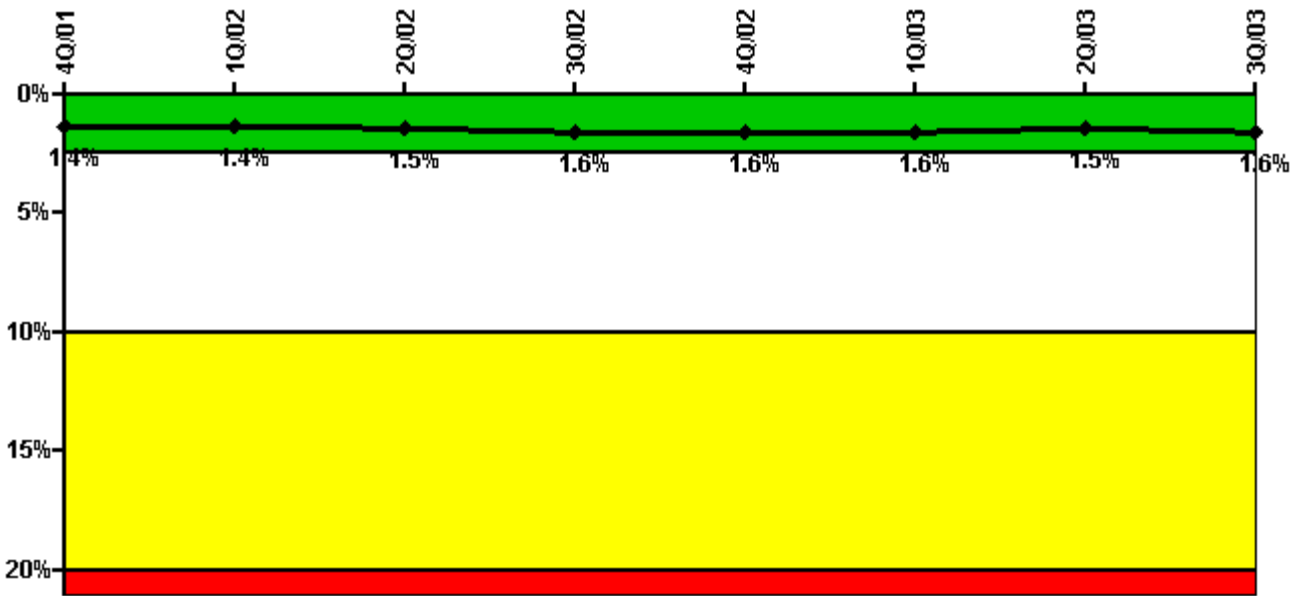
Thresholds: White > 6.0

#### Notes

Unplanned Power Changes per 7000 Critical Hrs	4Q/01	1Q/02	2Q/02	3Q/02	4Q/02	1Q/03	2Q/03	3Q/03
Unplanned power changes	0	0	1.0	0	0	1.0	0	0
Critical hours	2209.0	2160.0	1310.0	2167.9	2081.3	1756.7	2156.9	2208.0
Indicator value	0	0	0.9	0.9	0.9	1.9	0.9	0.9

Licensee Comments: none

### Safety System Unavailability, Emergency AC Power, >2EDG



Thresholds: White > 2.5% Yellow > 10.0% Red > 20.0%

#### Notes

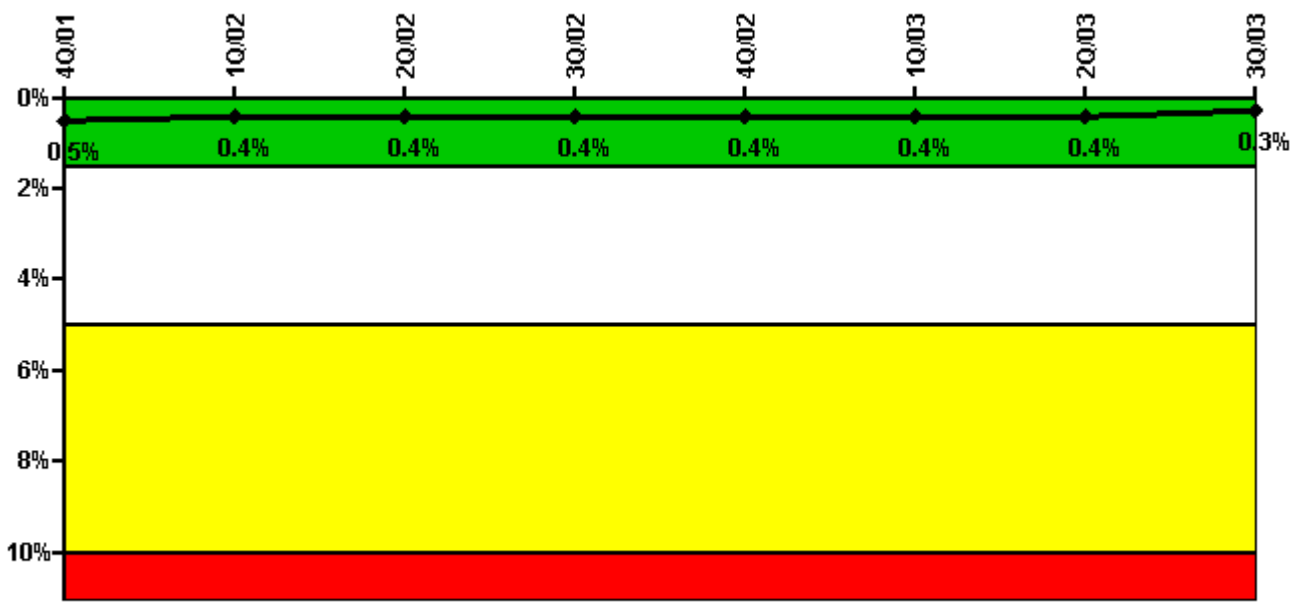
Safety System Unavailability, Emergency AC Power, >2EDG	4Q/01	1Q/02	2Q/02	3Q/02	4Q/02	1Q/03	2Q/03	3Q/03
<b>Train 1</b>								
Planned unavailable hours	123.50	91.92	26.38	9.00	6.75	8.32	7.70	57.22
Unplanned unavailable hours	0	0	0	8.02	0	0	0	0
Fault exposure hours	0	0	0	0	0	0	0	0
Effective Reset hours	0	0	0	0	0	0	0	0
Required hours	2209.00	2160.00	2183.00	2208.00	2209.00	2160.00	2183.00	2208.00
<b>Train 2</b>								
Planned unavailable hours	7.08	4.53	26.40	12.48	9.20	3.37	3.87	41.53
Unplanned unavailable hours	0	0	0	3.05	0	0	0	0
Fault exposure hours	0	0	0	0	0	0	0	0
Effective Reset hours	0	0	0	0	0	0	0	0
Required hours	2209.00	2160.00	2183.00	2208.00	2209.00	2160.00	2183.00	2208.00
<b>Train 3</b>								
Planned unavailable hours	1.95	161.88	61.87	29.35	4.43	4.02	6.27	51.07
Unplanned unavailable hours	24.17	0	5.10	0	0	0	0	0
Fault exposure hours	0	0	0	0	0	0	0	0
Effective Reset hours	0	0	0	0	0	0	0	0
Required hours	2209.00	2160.00	2183.00	2208.00	2209.00	2160.00	2183.00	2208.00
<b>Train 4</b>								
Planned unavailable hours	9.87	19.82	23.28	36.57	12.25	4.60	4.63	36.37
Unplanned unavailable hours	0	15.05	0	33.72	0	0	0	0.62
Fault exposure hours	0	0	0	0	0	0	0	0
Effective Reset hours	0	0	0	0	0	0	0	0
Required hours	2209.00	2160.00	2183.00	2208.00	2209.00	2160.00	2183.00	2208.00

Indicator value	1.4%	1.4%	1.5%	1.6%	1.6%	1.6%	1.5%	1.6%

Licensee Comments:

3Q/03:

### Safety System Unavailability, High Pressure Injection System (HPSI)



Thresholds: White > 1.5% Yellow > 5.0% Red > 10.0%

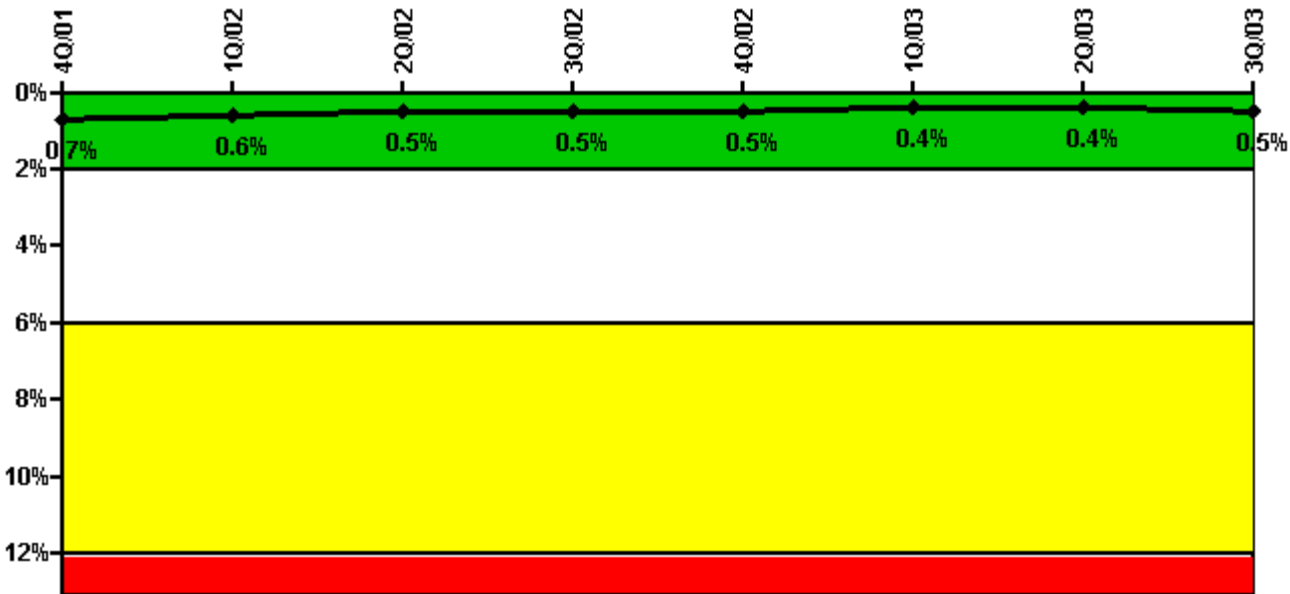
### Notes

Safety System Unavailability, High Pressure Injection System (HPSI)	4Q/01	1Q/02	2Q/02	3Q/02	4Q/02	1Q/03	2Q/03	3Q/03
<b>Train 1</b>								
Planned unavailable hours	2.40	3.90	0	12.90	5.50	3.00	2.90	1.10
Unplanned unavailable hours	4.10	0	0	1.00	0	0	0	0
Fault exposure hours	0	0	0	0	0	0	0	0
Effective Reset hours	0	0	0	0	0	0	0	0
Required hours	2209.00	2160.00	1441.20	2208.00	2115.70	2064.30	2183.00	2208.00
<b>Train 2</b>								
Planned unavailable hours	3.50	3.60	1.70	8.80	10.10	2.60	1.60	2.40
Unplanned unavailable hours	0	0	0	2.30	8.60	0	0	0
Fault exposure hours	0	0	0	0	0	0	0	0
Effective Reset hours	0	0	0	0	0	0	0	0

Required hours	2209.00	2160.00	1441.20	2208.00	2115.70	2064.30	2183.00	2208.00
<b>Train 3</b>								
Planned unavailable hours	4.40	5.20	0.70	3.30	2.10	11.80	9.20	1.10
Unplanned unavailable hours	0	0	0	1.00	0	0	0	0
Fault exposure hours	0	0	0	0	0	0	0	0
Effective Reset hours	0	0	0	0	0	0	0	0
Required hours	2209.00	2160.00	1420.80	2208.00	2108.90	2052.90	2183.00	2208.00
<b>Train 4</b>								
Planned unavailable hours	4.00	6.60	1.80	8.80	11.50	10.70	1.60	2.40
Unplanned unavailable hours	0	0	0	2.30	3.60	0	0	0
Fault exposure hours	0	0	0	0	0	0	0	0
Effective Reset hours	0	0	0	0	0	0	0	0
Required hours	2209.00	2160.00	1420.80	2208.00	2108.90	2052.90	2183.00	2208.00
<b>Indicator value</b>	<b>0.5%</b>	<b>0.4%</b>	<b>0.4%</b>	<b>0.4%</b>	<b>0.4%</b>	<b>0.4%</b>	<b>0.4%</b>	<b>0.3%</b>

Licensee Comments: none

### Safety System Unavailability, Heat Removal System (AFW)



Thresholds: White > 2.0% Yellow > 6.0% Red > 12.0%

**Notes**

Safety System Unavailability, Heat Removal System (AFW)	4Q/01	1Q/02	2Q/02	3Q/02	4Q/02	1Q/03	2Q/03	3Q/03
Train 1								

Planned unavailable hours	16.32	25.35	0.90	4.65	2.34	8.19	3.29	7.80
Unplanned unavailable hours	0	0	0	0	0	0	0	0
Fault exposure hours	0	0	0	0	0	0	0	0
Effective Reset hours	0	0	0	0	0	0	0	0
Required hours	2209.00	2160.00	1441.13	2208.00	2115.70	2064.27	2183.00	2208.00
<b>Train 2</b>								
Planned unavailable hours	11.28	3.44	2.30	2.61	14.45	8.33	14.80	21.04
Unplanned unavailable hours	0	0	0	0	0	0	0	0
Fault exposure hours	0	0	0	0	0	0	0	0
Effective Reset hours	0	0	0	0	0	0	0	0
Required hours	2209.00	2160.00	1420.79	2208.00	2108.90	2052.85	2183.00	2208.00
<b>Train 3</b>								
Planned unavailable hours	4.12	5.47	8.36	16.99	8.07	18.69	10.17	28.46
Unplanned unavailable hours	0	0	0	0	0	0	0	0
Fault exposure hours	0	0	0	0	0	0	0	0
Effective Reset hours	0	0	0	0	0	0	0	0
Required hours	2209.00	2160.00	1385.49	2208.00	2108.90	2052.85	2183.00	2208.00
Indicator value	0.7%	0.6%	0.5%	0.5%	0.5%	0.4%	0.4%	0.5%

Licensee Comments: none

### Safety System Unavailability, Residual Heat Removal System



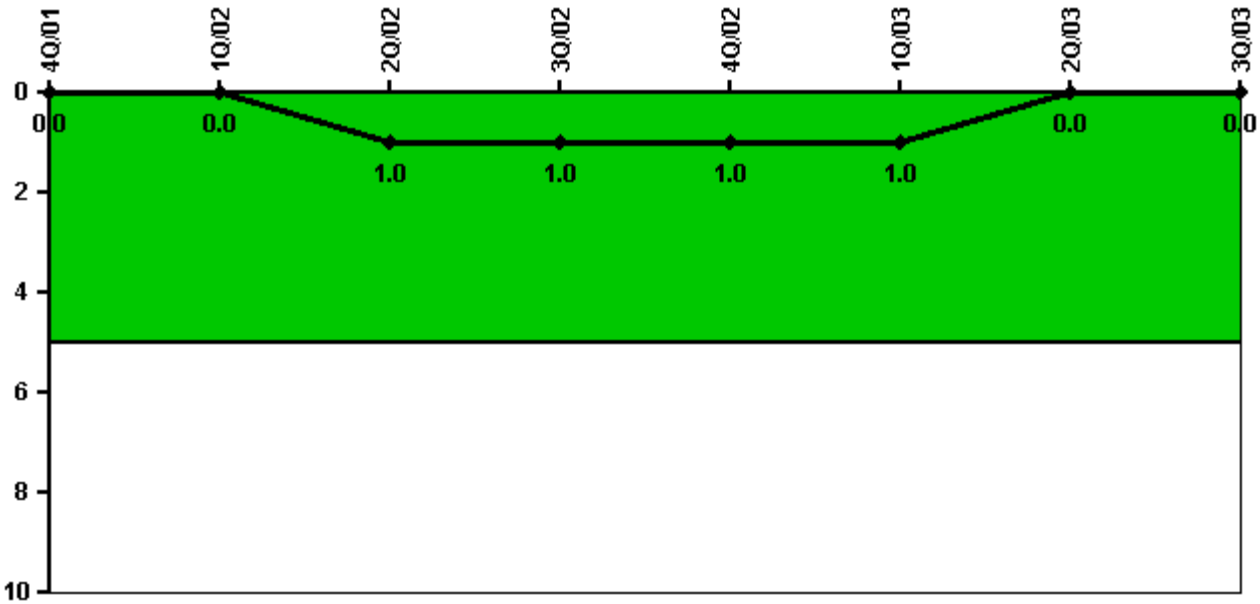
Thresholds: White > 1.5% Yellow > 5.0% Red > 10.0%

**Notes**

Safety System Unavailability, Residual Heat Removal System	4Q/01	1Q/02	2Q/02	3Q/02	4Q/02	1Q/03	2Q/03	3Q/03
<b>Train 1</b>								
Planned unavailable hours	4.80	17.90	11.70	8.40	1.80	12.70	3.60	2.60
Unplanned unavailable hours	0	0	0	1.00	0	0	0	0
Fault exposure hours	0	0	0	0	0	0	0	0
Effective Reset hours	0	0	0	0	0	0	0	0
Required hours	2209.00	2160.00	1831.00	2208.00	2209.00	2160.00	2183.00	2208.00
<b>Train 2</b>								
Planned unavailable hours	12.60	24.30	13.20	8.80	12.00	2.60	1.60	2.40
Unplanned unavailable hours	0	0	0	2.30	3.60	0	0	0
Fault exposure hours	0	0	0	0	0	0	0	0
Effective Reset hours	0	0	0	0	0	0	0	0
Required hours	2209.00	2160.00	1831.00	2208.00	2209.00	2160.00	2183.00	2208.00
<b>Indicator value</b>	<b>0.8%</b>	<b>0.7%</b>	<b>0.7%</b>	<b>0.7%</b>	<b>0.7%</b>	<b>0.7%</b>	<b>0.7%</b>	<b>0.6%</b>

Licensee Comments: none

**Safety System Functional Failures (PWR)**



Thresholds: White > 5.0

**Notes**

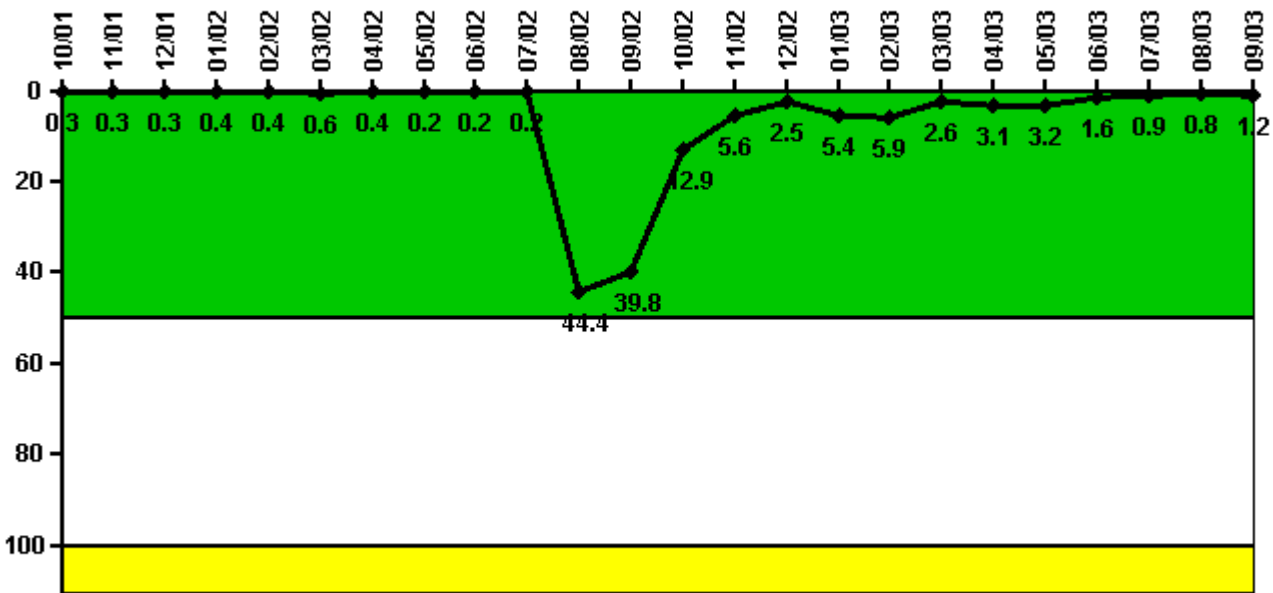
---



Safety System Functional Failures (PWR)	4Q/01	1Q/02	2Q/02	3Q/02	4Q/02	1Q/03	2Q/03	3Q/03
Safety System Functional Failures	0	0	1	0	0	0	0	0
Indicator value	0	0	1	1	1	1	0	0

Licensee Comments: none

### Reactor Coolant System Activity



Thresholds: White > 50.0 Yellow > 100.0

### Notes

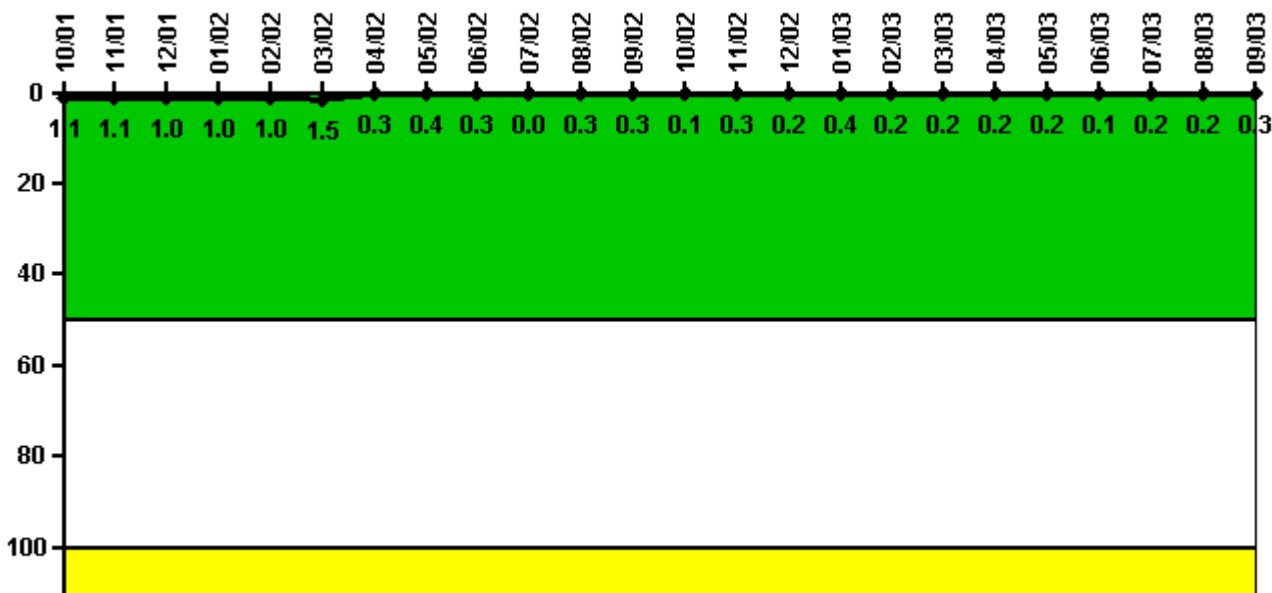
Reactor Coolant System Activity	10/01	11/01	12/01	1/02	2/02	3/02	4/02	5/02	6/02	7/02	8/02	9/02
Maximum activity	0.000763	0.000847	0.000794	0.000880	0.000909	0.001570	0.001070	0.000390	0.000501	0.000504	0.111000	0.099500
Technical specification limit	0.3	0.3	0.3	0.3	0.3	0.3	0.3	0.3	0.3	0.3	0.3	0.3
Indicator value	0.3	0.3	0.3	0.4	0.4	0.6	0.4	0.2	0.2	0.2	44.4	39.8

Reactor Coolant System Activity	10/02	11/02	12/02	1/03	2/03	3/03	4/03	5/03	6/03	7/03	8/03	9/03
Maximum activity	0.032300	0.014000	0.006190	0.013500	0.014700	0.006380	0.007650	0.007960	0.003900	0.002130	0.001940	0.002940
Technical specification limit	0.3	0.3	0.3	0.3	0.3	0.3	0.3	0.3	0.3	0.3	0.3	0.3
Indicator value	12.9	5.6	2.5	5.4	5.9	2.6	3.1	3.2	1.6	0.9	0.8	1.2

Licensee Comments: none

### Reactor Coolant System Leakage



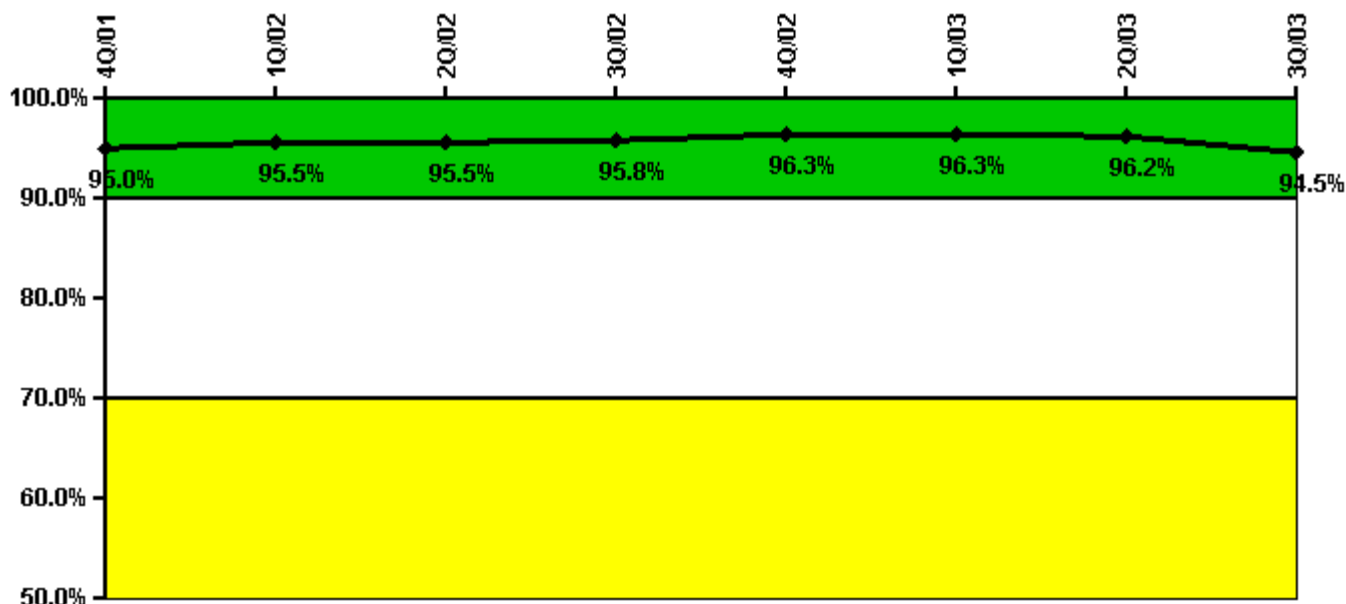
Thresholds: White > 50.0 Yellow > 100.0

**Notes**

Reactor Coolant System Leakage	10/01	11/01	12/01	1/02	2/02	3/02	4/02	5/02	6/02	7/02	8/02	9/02
Maximum leakage	0.110	0.110	0.100	0.100	0.100	0.150	0.030	0.040	0.030	0	0.030	0.030
Technical specification limit	10.0	10.0	10.0	10.0	10.0	10.0	10.0	10.0	10.0	10.0	10.0	10.0
Indicator value	1.1	1.1	1.0	1.0	1.0	1.5	0.3	0.4	0.3	0	0.3	0.3
Reactor Coolant System Leakage	10/02	11/02	12/02	1/03	2/03	3/03	4/03	5/03	6/03	7/03	8/03	9/03
Maximum leakage	0.010	0.030	0.020	0.040	0.020	0.020	0.020	0.020	0.010	0.020	0.020	0.030
Technical specification limit	10.0	10.0	10.0	10.0	10.0	10.0	10.0	10.0	10.0	10.0	10.0	10.0
Indicator value	0.1	0.3	0.2	0.4	0.2	0.2	0.2	0.2	0.1	0.2	0.2	0.3

Licensee Comments: none

### Drill/Exercise Performance



Thresholds: White < 90.0% Yellow < 70.0%

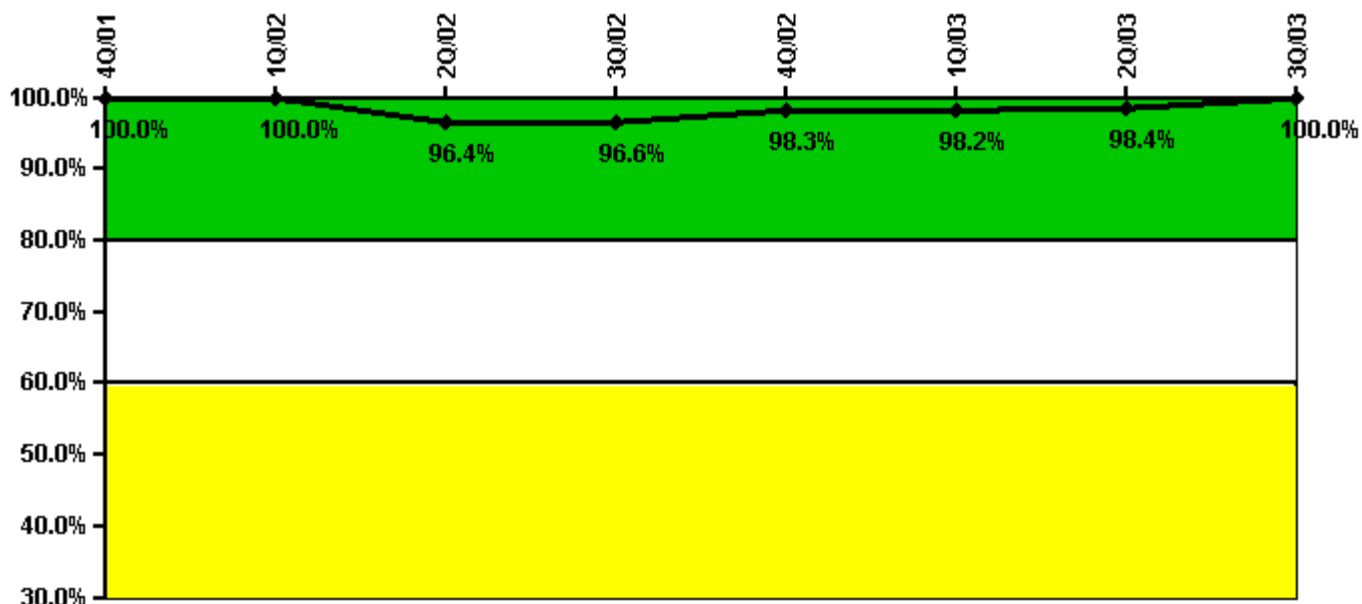
#### Notes

Drill/Exercise Performance	4Q/01	1Q/02	2Q/02	3Q/02	4Q/02	1Q/03	2Q/03	3Q/03
Successful opportunities	30.0	14.0	10.0	9.0	58.0	0	0	155.0
Total opportunities	34.0	14.0	10.0	10.0	58.0	0	0	166.0
Indicator value	95.0%	95.5%	95.5%	95.8%	96.3%	96.3%	96.2%	94.5%

Licensee Comments:

3Q/03: FAQ submitted (PER FAQ 338) concerning inconsistent marking of "Drill"/"Actual" due to change of expectations and incomplete implementation of change.

### ERO Drill Participation



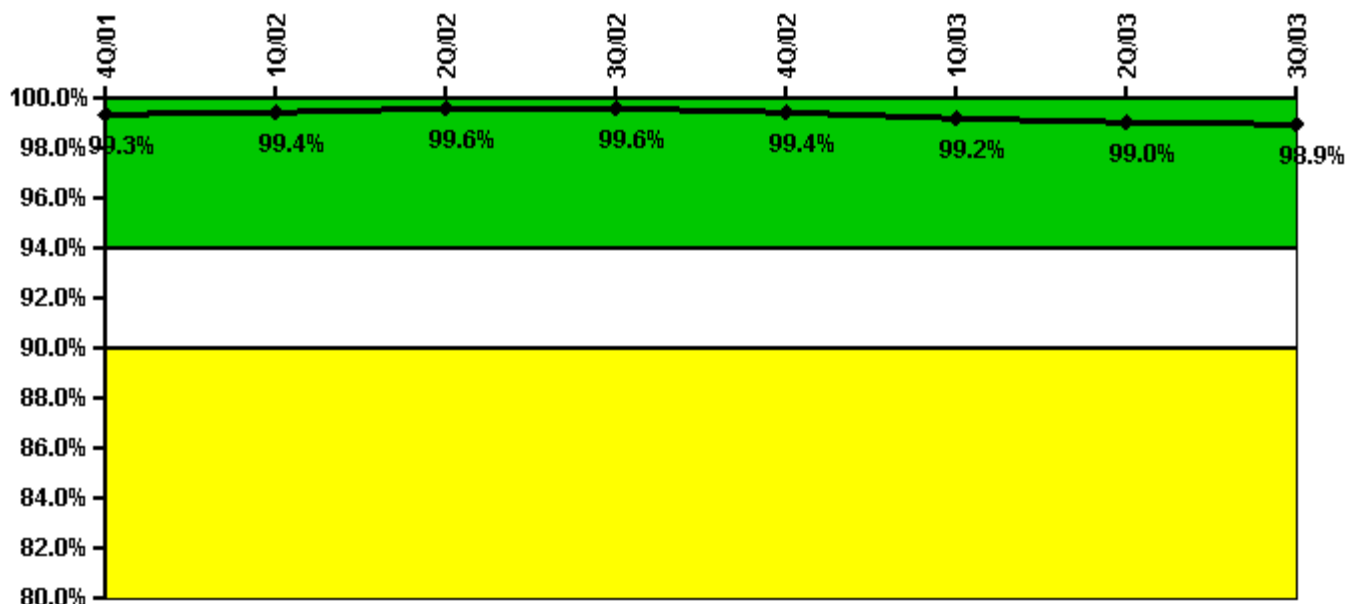
Thresholds: White < 80.0% Yellow < 60.0%

#### Notes

ERO Drill Participation	4Q/01	1Q/02	2Q/02	3Q/02	4Q/02	1Q/03	2Q/03	3Q/03
Participating Key personnel	56.0	57.0	54.0	56.0	57.0	56.0	62.0	62.0
Total Key personnel	56.0	57.0	56.0	58.0	58.0	57.0	63.0	62.0
Indicator value	100.0%	100.0%	96.4%	96.6%	98.3%	98.2%	98.4%	100.0%

Licensee Comments: none

### Alert & Notification System



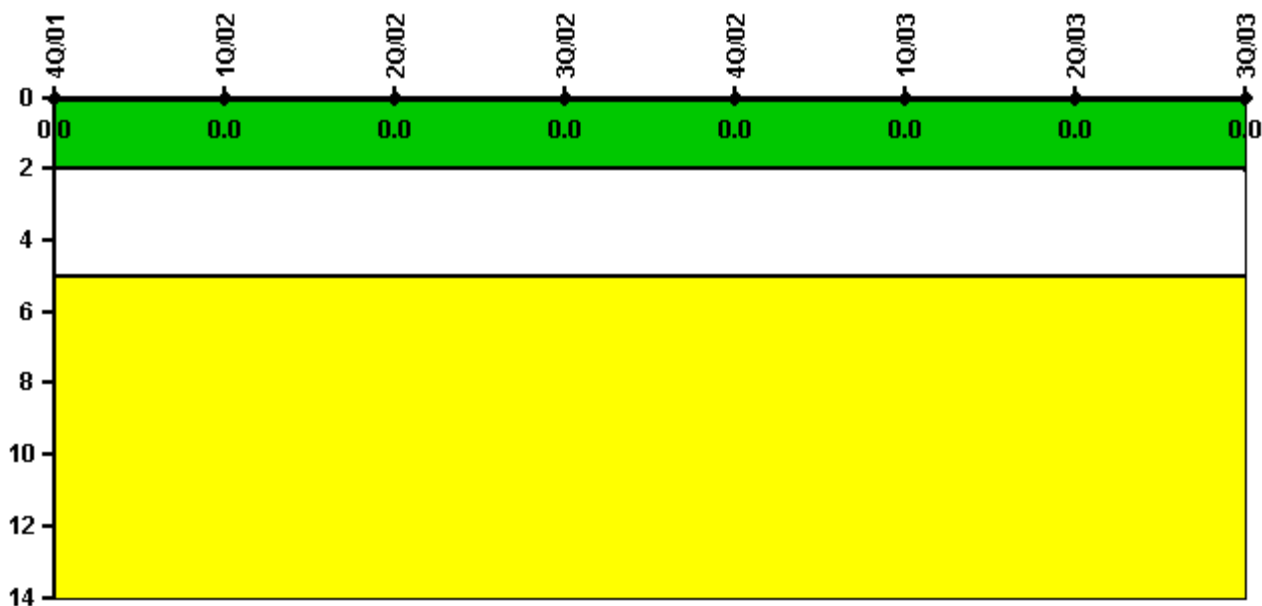
Thresholds: White < 94.0% Yellow < 90.0%

#### Notes

Alert & Notification System	4Q/01	1Q/02	2Q/02	3Q/02	4Q/02	1Q/03	2Q/03	3Q/03
Successful siren-tests	970	752	968	753	962	746	961	855
Total sirens-tests	972	756	972	756	972	756	972	864
Indicator value	99.3%	99.4%	99.6%	99.6%	99.4%	99.2%	99.0%	98.9%

Licensee Comments: none

### Occupational Exposure Control Effectiveness



Thresholds: White > 2.0 Yellow > 5.0

#### Notes

Occupational Exposure Control Effectiveness	4Q/01	1Q/02	2Q/02	3Q/02	4Q/02	1Q/03	2Q/03	3Q/03
High radiation area occurrences	0	0	0	0	0	0	0	0
Very high radiation area occurrences	0	0	0	0	0	0	0	0
Unintended exposure occurrences	0	0	0	0	0	0	0	0
Indicator value	0	0	0	0	0	0	0	0

Licensee Comments: none

### RETS/ODCM Radiological Effluent



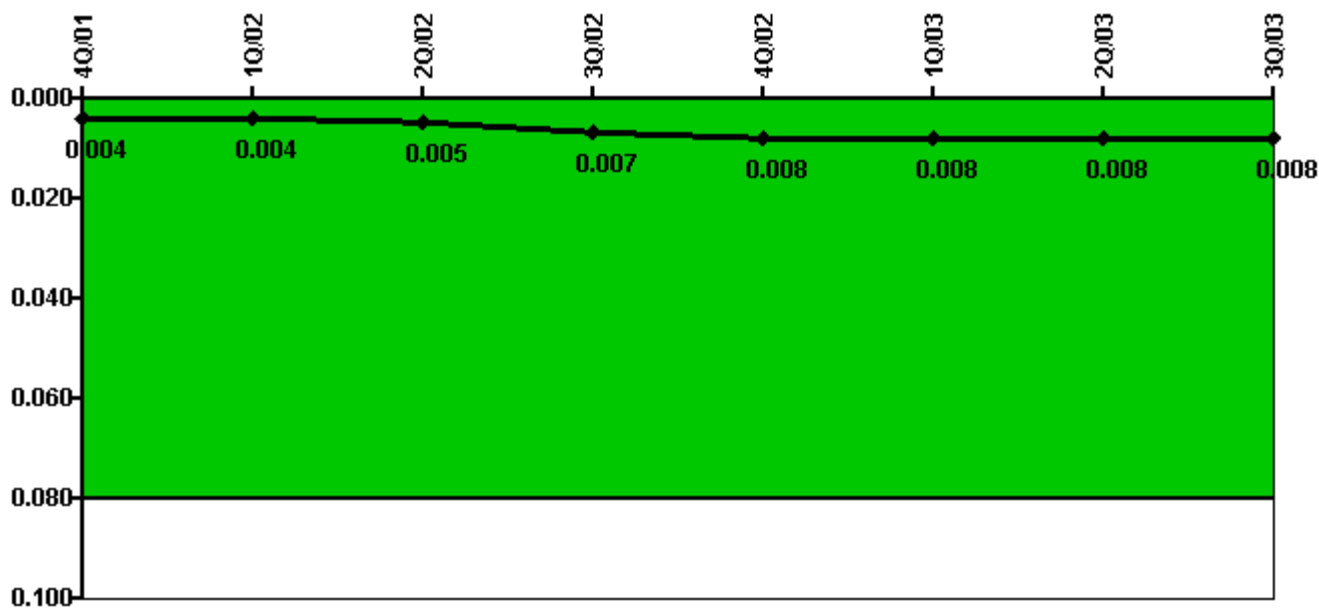
Thresholds: White > 1.0 Yellow > 3.0

#### Notes

RETS/ODCM Radiological Effluent	4Q/01	1Q/02	2Q/02	3Q/02	4Q/02	1Q/03	2Q/03	3Q/03
RETS/ODCM occurrences	0	0	0	0	0	0	0	0
Indicator value	0	0	0	0	0	0	0	0

Licensee Comments: none

### Protected Area Security Performance Index



Thresholds: White > 0.080

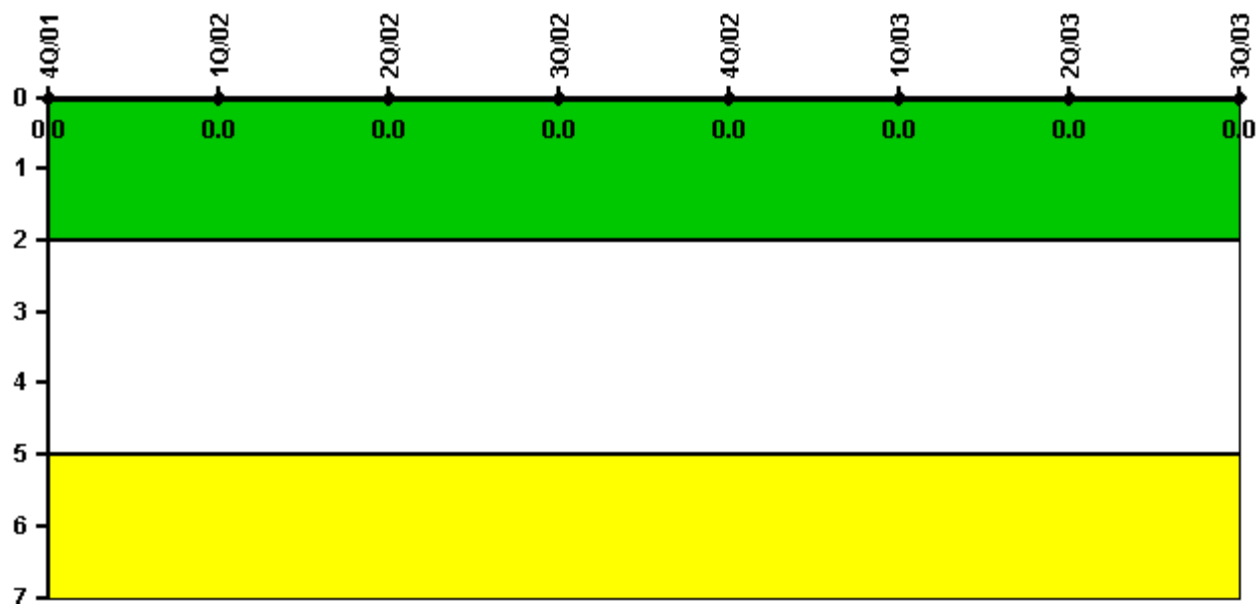
#### Notes

Protected Area Security Performance Index	4Q/01	1Q/02	2Q/02	3Q/02	4Q/02	1Q/03	2Q/03	3Q/03
IDS compensatory hours	28.17	50.42	17.83	31.09	123.42	88.04	89.55	146.31
CCTV compensatory hours	0	54.4	58.2	106.1	0.6	0.2	44.9	0.3
IDS normalization factor	3.65	3.65	3.65	3.65	3.65	3.65	3.65	3.65
CCTV normalization factor	2.7	2.7	2.7	2.7	2.7	2.7	2.7	2.7
Index Value	0.004	0.004	0.005	0.007	0.008	0.008	0.008	0.008

Licensee Comments: none



### Personnel Screening Program



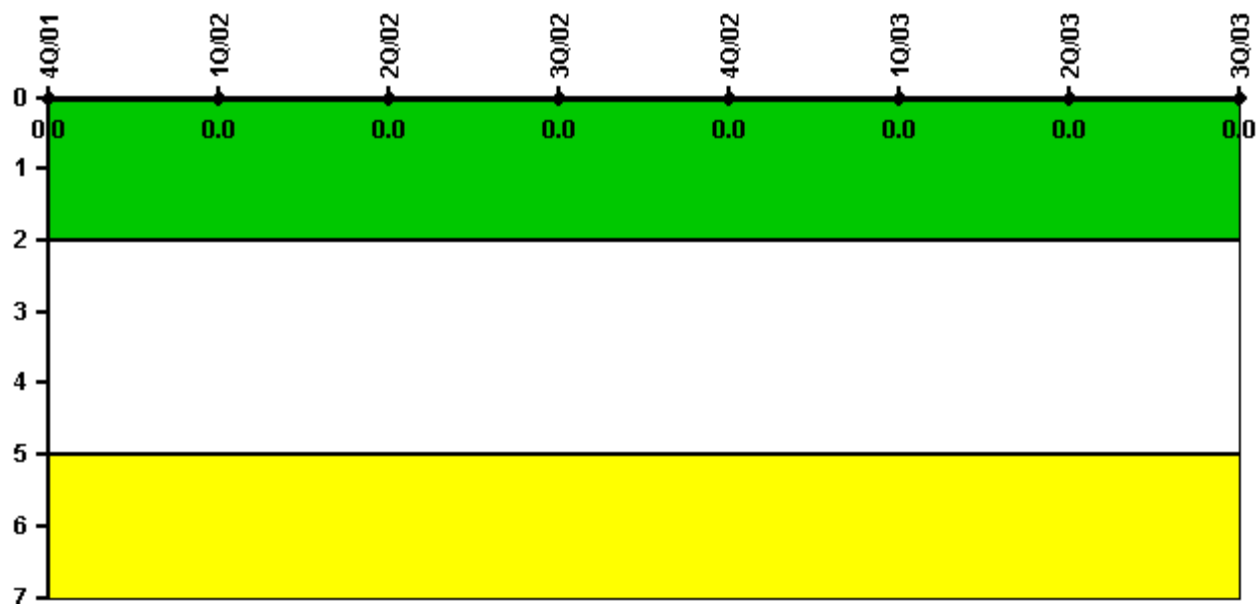
Thresholds: White > 2.0 Yellow > 5.0

#### Notes

Personnel Screening Program	4Q/01	1Q/02	2Q/02	3Q/02	4Q/02	1Q/03	2Q/03	3Q/03
Program failures	0	0	0	0	0	0	0	0
Indicator value	0	0	0	0	0	0	0	0

Licensee Comments: none

### FFD/Personnel Reliability



Thresholds: White > 2.0 Yellow > 5.0

#### Notes

FFD/Personnel Reliability	4Q/01	1Q/02	2Q/02	3Q/02	4Q/02	1Q/03	2Q/03	3Q/03
Program Failures	0	0	0	0	0	0	0	0
Indicator value	0	0	0	0	0	0	0	0

Licensee Comments: none

▲ [PI Summary](#) | [Inspection Findings Summary](#) | [Reactor Oversight Process](#)

Last Modified: October 22, 2003