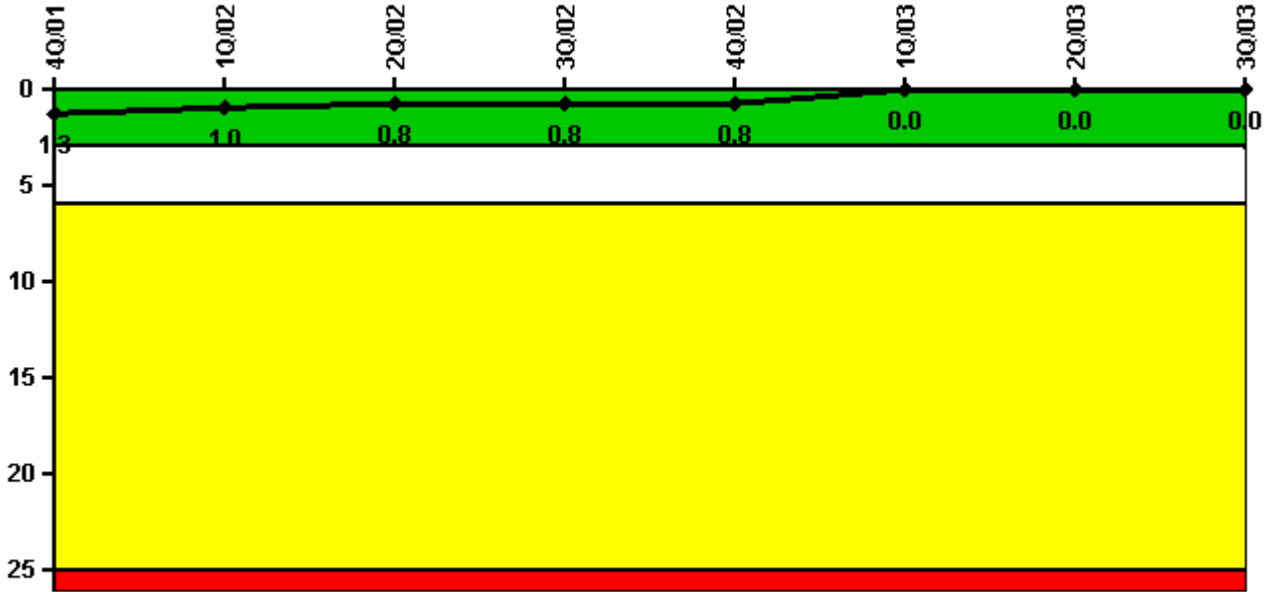


San Onofre 3

3Q/2003 Performance Indicators

Licensee's General Comments: none

Unplanned Scrams per 7000 Critical Hrs



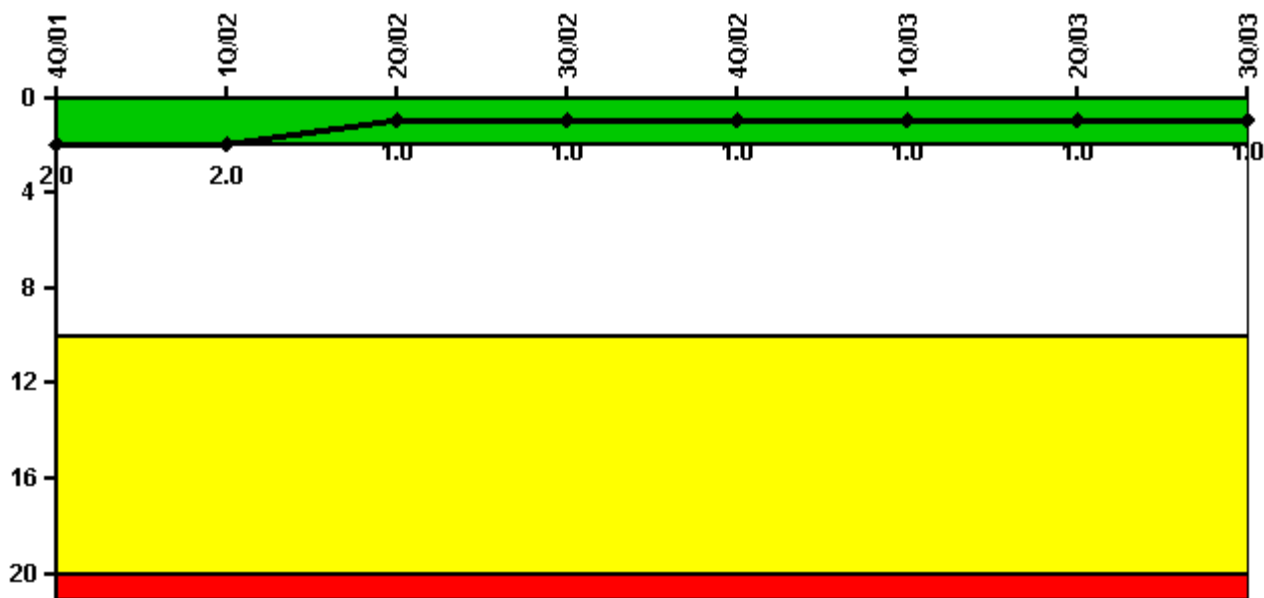
Thresholds: White > 3.0 Yellow > 6.0 Red > 25.0

Notes

Unplanned Scrams per 7000 Critical Hrs	4Q/01	1Q/02	2Q/02	3Q/02	4Q/02	1Q/03	2Q/03	3Q/03
Unplanned scrams	0	1.0	0	0	0	0	0	0
Critical hours	2209.0	2085.6	2183.0	2208.0	2209.0	1170.0	2183.0	2208.0
Indicator value	1.3	1.0	0.8	0.8	0.8	0	0	0

Licensee Comments: none

Scrams with Loss of Normal Heat Removal



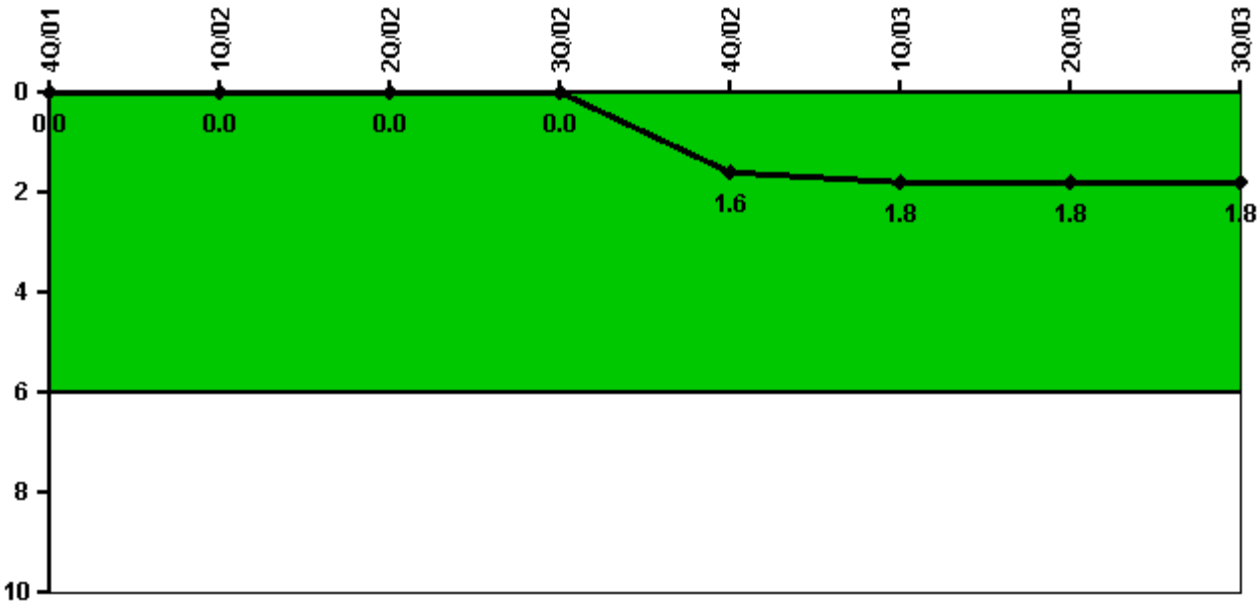
Thresholds: White > 2.0 Yellow > 10.0 Red > 20.0

Notes

Scrams with Loss of Normal Heat Removal	4Q/01	1Q/02	2Q/02	3Q/02	4Q/02	1Q/03	2Q/03	3Q/03
Scrams	0	0	0	0	0	0	0	0
Indicator value	2.0	2.0	1.0	1.0	1.0	1.0	1.0	1.0

Licensee Comments: none

Unplanned Power Changes per 7000 Critical Hrs



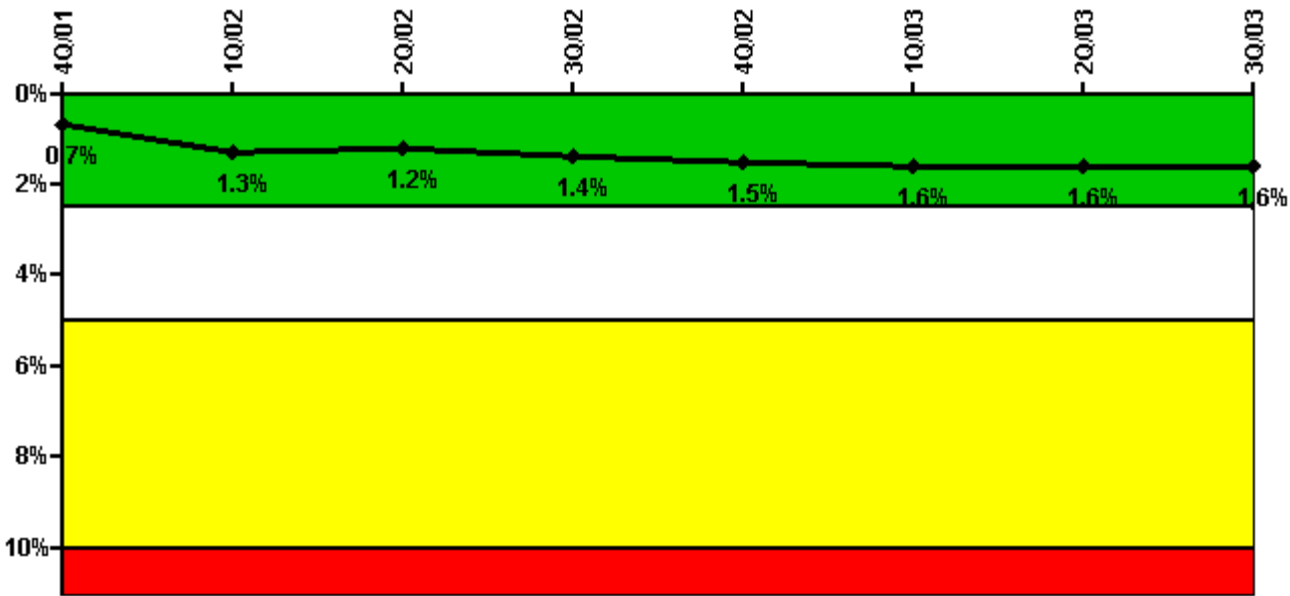
Thresholds: White > 6.0

Notes

Unplanned Power Changes per 7000 Critical Hrs	4Q/01	1Q/02	2Q/02	3Q/02	4Q/02	1Q/03	2Q/03	3Q/03
Unplanned power changes	0	0	0	0	2.0	0	0	0
Critical hours	2209.0	2085.6	2183.0	2208.0	2209.0	1170.0	2183.0	2208.0
Indicator value	0	0	0	0	1.6	1.8	1.8	1.8

Licensee Comments: none

Safety System Unavailability, Emergency AC Power



Thresholds: White > 2.5% Yellow > 5.0% Red > 10.0%

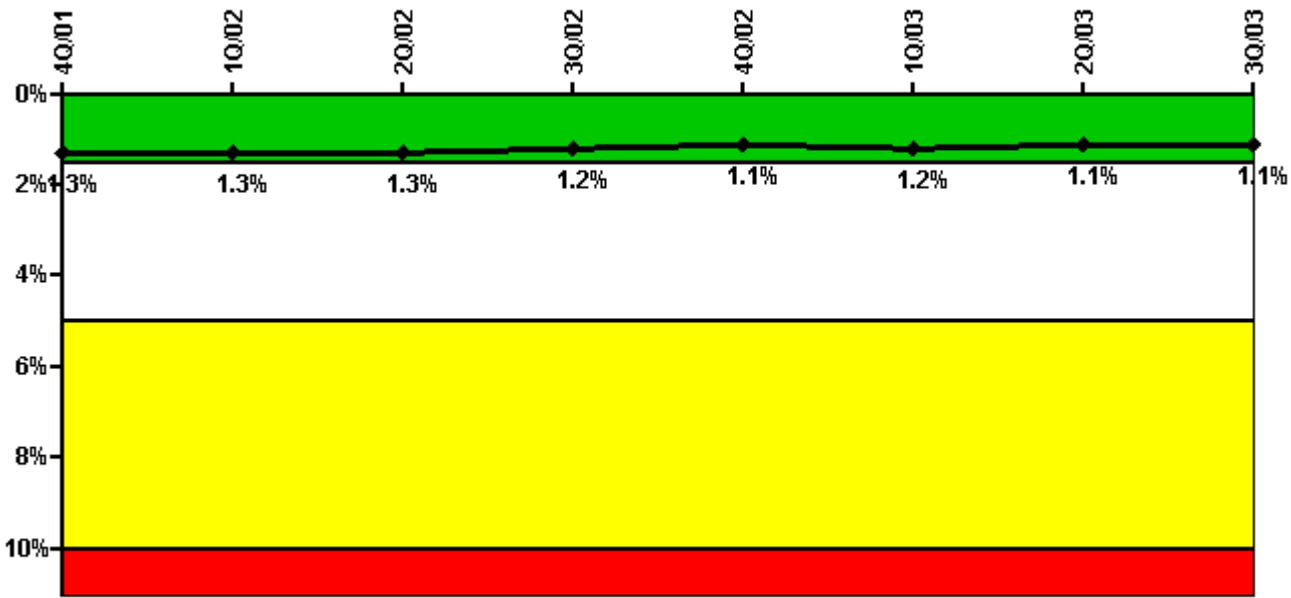
Notes

Safety System Unavailability, Emergency AC Power	4Q/01	1Q/02	2Q/02	3Q/02	4Q/02	1Q/03	2Q/03	3Q/03
Train 1								
Planned unavailable hours	4.65	148.10	13.87	63.97	2.72	75.18	1.88	1.45
Unplanned unavailable hours	0	0	0	8.45	0	0	0	8.17
Fault exposure hours	0	0	0	0	0	0	0	0
Effective Reset hours	0	0	0	0	0	0	0	0
Required hours	2209.00	2160.00	2183.00	2208.00	2209.00	2160.00	2183.00	2208.00
Train 2								
Planned unavailable hours	2.63	167.50	1.78	1.55	54.53	0.42	3.55	32.32
Unplanned unavailable hours	0	0	0	128.00	0	0	19.08	75.77
Fault exposure hours	0	0	0	0	0	0	0	0
Effective Reset hours	0	0	0	0	0	0	0	0
Required hours	2209.00	2160.00	2183.00	2208.00	2209.00	2160.00	2183.00	2208.00
Indicator value	0.7%	1.3%	1.2%	1.4%	1.5%	1.6%	1.6%	1.6%

Licensee Comments:

3Q/03: Discovered condition on 9/21/03 for S32420MG003 Train 2 (B) Emergency Diesel Generator (EDG). Planned/unplanned UA included in 3Q03 report. Engineering Evaluation in progress, which will determine any fault exposure impact. Results will be included in 4Q03 report.

Safety System Unavailability, High Pressure Injection System (HPSI)



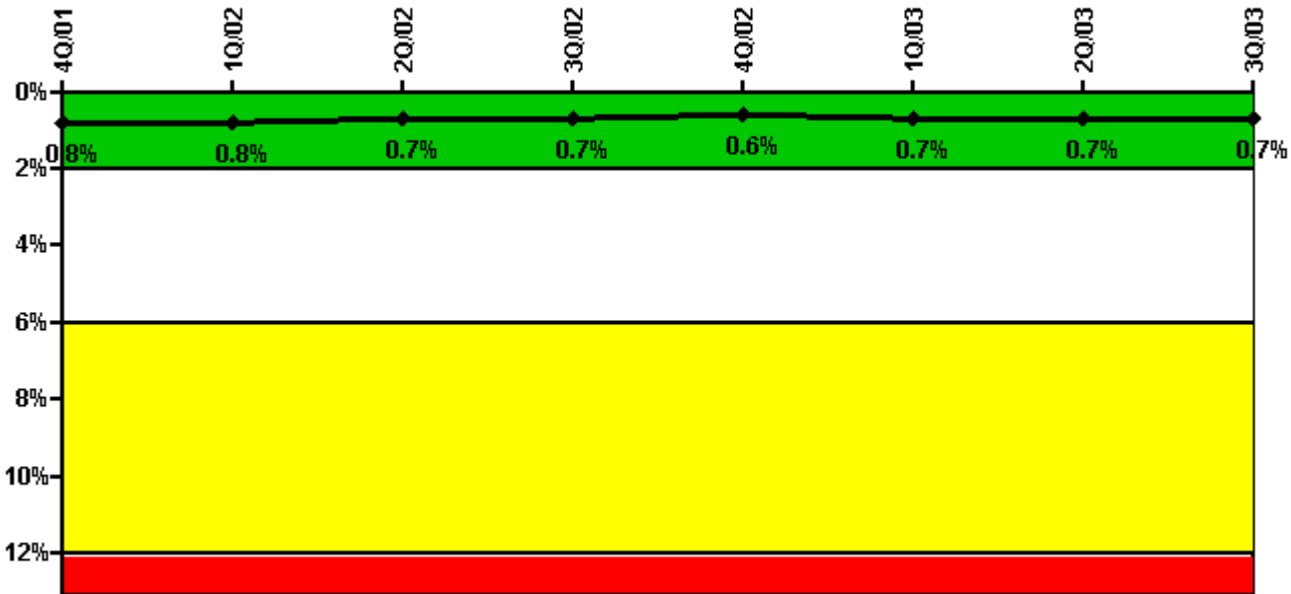
Thresholds: White > 1.5% Yellow > 5.0% Red > 10.0%

Notes

Safety System Unavailability, High Pressure Injection System (HPSI)	4Q/01	1Q/02	2Q/02	3Q/02	4Q/02	1Q/03	2Q/03	3Q/03
Train 1								
Planned unavailable hours	51.80	10.10	11.20	1.00	8.18	1.70	11.32	39.11
Unplanned unavailable hours	0	0	0	0	0	0	0.87	0
Fault exposure hours	0	0	0	0	0	0	0	0
Effective Reset hours	0	0	0	0	0	0	0	0
Required hours	2209.00	2086.00	2183.00	2208.00	2209.00	1169.96	2183.00	2208.00
Train 2								
Planned unavailable hours	67.70	6.60	9.35	6.67	1.70	0.13	3.50	40.52
Unplanned unavailable hours	0	0	0	0	0	2.98	0	0
Fault exposure hours	0	0	0	0	0	0	0	0
Effective Reset hours	0	0	0	0	0	0	0	0
Required hours	2209.00	2086.00	2183.00	2208.00	2209.00	1169.96	2183.00	2208.00
Indicator value	1.3%	1.3%	1.3%	1.2%	1.1%	1.2%	1.1%	1.1%

Licensee Comments: none

Safety System Unavailability, Heat Removal System (AFW)



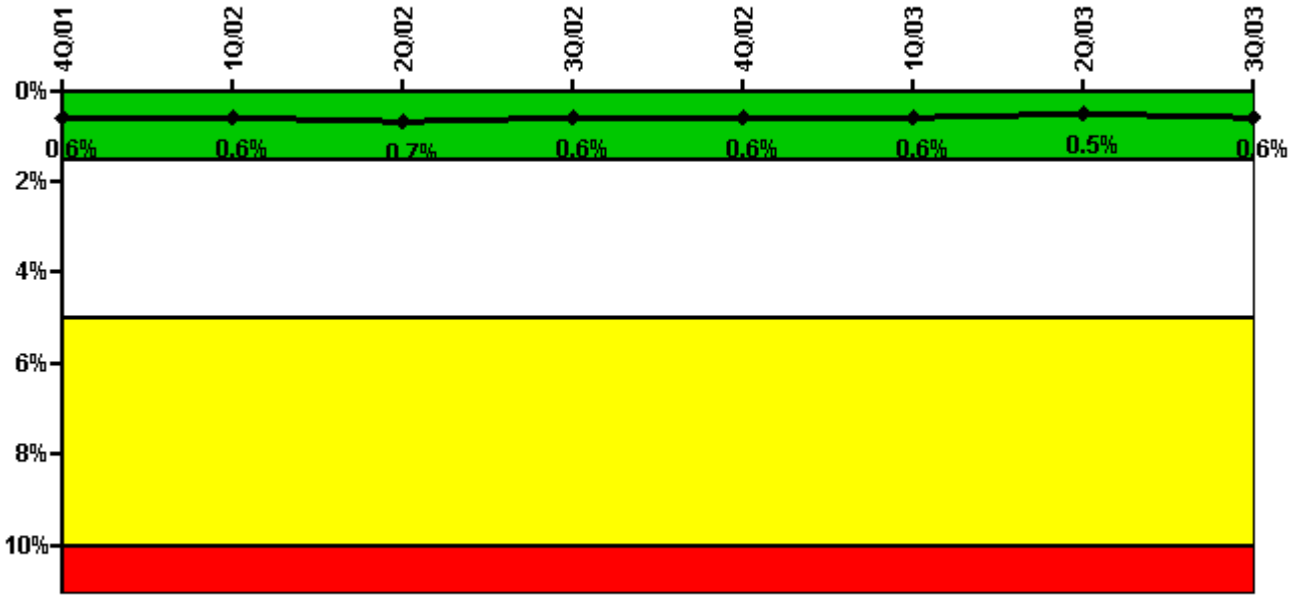
Thresholds: White > 2.0% Yellow > 6.0% Red > 12.0%

Notes

Safety System Unavailability, Heat Removal System (AFW)	4Q/01	1Q/02	2Q/02	3Q/02	4Q/02	1Q/03	2Q/03	3Q/03
Train 1								
Planned unavailable hours	0	23.10	15.33	0.20	0.32	41.67	0.40	11.42
Unplanned unavailable hours	0	0	0	0	0	0	0	0
Fault exposure hours	0	0	0	0	0	0	0	0
Effective Reset hours	0	0	0	0	0	0	0	0
Required hours	2209.00	2086.00	2183.00	2208.00	2209.00	1169.96	2183.00	2208.00
Train 2								
Planned unavailable hours	0	13.60	0.17	42.45	0.28	0.83	6.25	35.47
Unplanned unavailable hours	0	0	0	0	0	0	0	0
Fault exposure hours	0	0	0	0	0	0	0	0
Effective Reset hours	0	0	0	0	0	0	0	0
Required hours	2209.00	2086.00	2183.00	2208.00	2209.00	1169.96	2183.00	2208.00
Train 3								
Planned unavailable hours	25.20	0	0.10	40.78	18.12	0	31.77	18.73
Unplanned unavailable hours	0	0	0	0	0	9.35	0	0
Fault exposure hours	0	0	0	0	0	0	0	0
Effective Reset hours	0	0	0	0	0	0	0	0
Required hours	2209.00	2086.00	2183.00	2208.00	2209.00	1169.96	2183.00	2208.00
Indicator value	0.8%	0.8%	0.7%	0.7%	0.6%	0.7%	0.7%	0.7%

Licensee Comments: none

Safety System Unavailability, Residual Heat Removal System



Thresholds: White > 1.5% Yellow > 5.0% Red > 10.0%

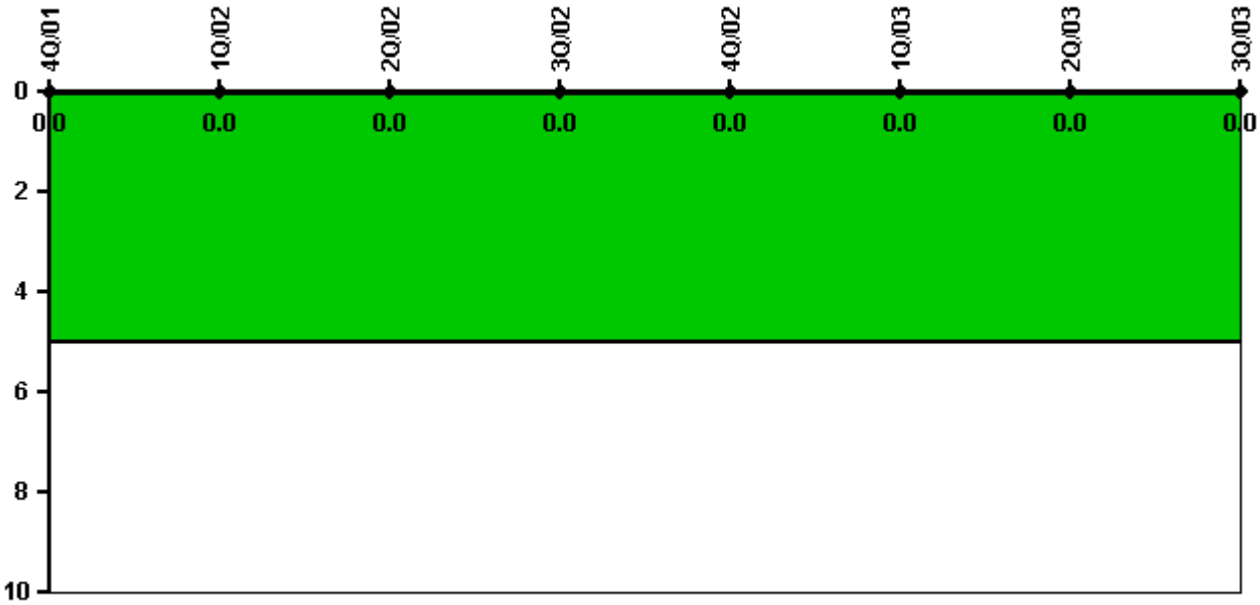
Notes

Safety System Unavailability, Residual Heat Removal System	4Q/01	1Q/02	2Q/02	3Q/02	4Q/02	1Q/03	2Q/03	3Q/03
Train 1								
Planned unavailable hours	54.10	11.20	6.02	0.82	6.52	0.85	1.08	85.65
Unplanned unavailable hours	0	0	0	0	0	0	4.62	0
Fault exposure hours	0	0	0	0	0	0	0	0
Effective Reset hours	0	0	0	0	0	0	0	0
Required hours	2209.00	2160.00	2183.00	2208.00	2209.00	1226.98	2183.00	2208.00
Train 2								
Planned unavailable hours	43.20	0.60	10.42	8.40	2.62	4.12	1.73	56.45
Unplanned unavailable hours	0	0	0	0	0	2.98	0	0
Fault exposure hours	0	0	0	0	0	0	0	0
Effective Reset hours	0	0	0	0	0	0	0	0
Required hours	2209.00	2160.00	2183.00	2208.00	2209.00	1226.98	2183.00	2208.00
Train 3								
Planned unavailable hours	0	0	0	0	0	1.57	0	0
Unplanned unavailable hours	0	0	0	0	0	0	0	0
Fault exposure hours	0	0	0	0	0	0	0	0
Effective Reset hours	0	0	0	0	0	0	0	0
Required hours	0	0	0	0	0	933.02	0	0
Train 4								

Planned unavailable hours	0	0	0	0	0	0	0	0
Unplanned unavailable hours	0	0	0	0	0	0	0	0
Fault exposure hours	0	0	0	0	0	0	0	0
Effective Reset hours	0	0	0	0	0	0	0	0
Required hours	0	0	0	0	0	933.02	0	0
Indicator value	0.6%	0.6%	0.7%	0.6%	0.6%	0.6%	0.5%	0.6%

Licensee Comments: none

Safety System Functional Failures (PWR)



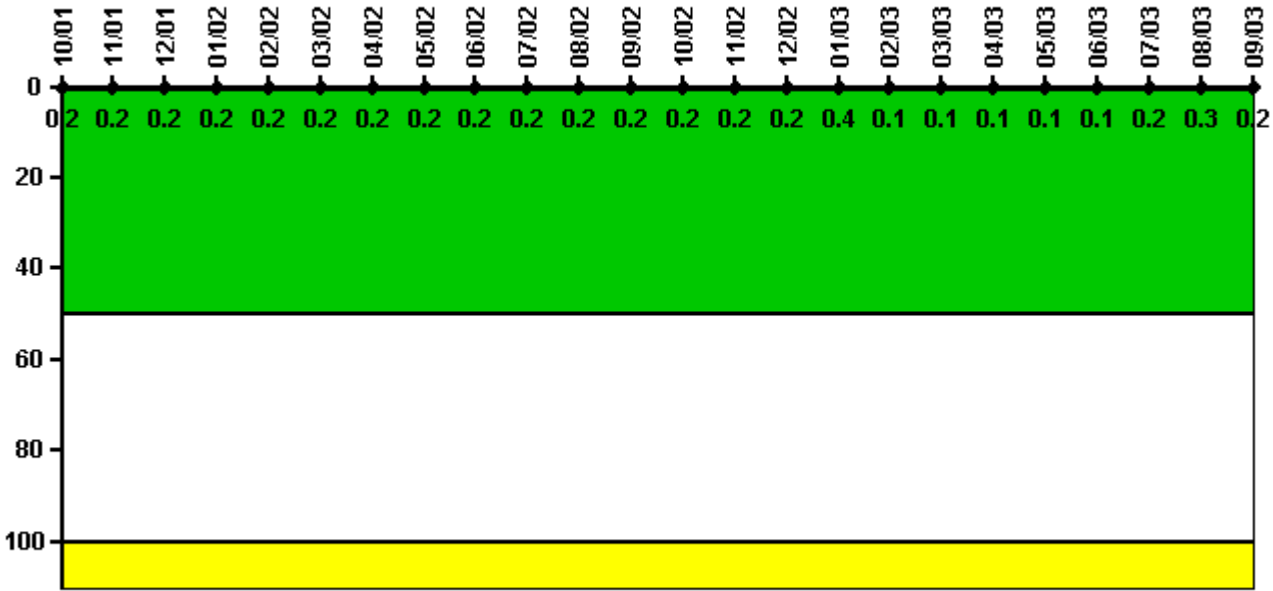
Thresholds: White > 5.0

Notes

Safety System Functional Failures (PWR)	4Q/01	1Q/02	2Q/02	3Q/02	4Q/02	1Q/03	2Q/03	3Q/03
Safety System Functional Failures	0	0	0	0	0	0	0	0
Indicator value	0	0	0	0	0	0	0	0

Licensee Comments: none

Reactor Coolant System Activity



Thresholds: White > 50.0 Yellow > 100.0

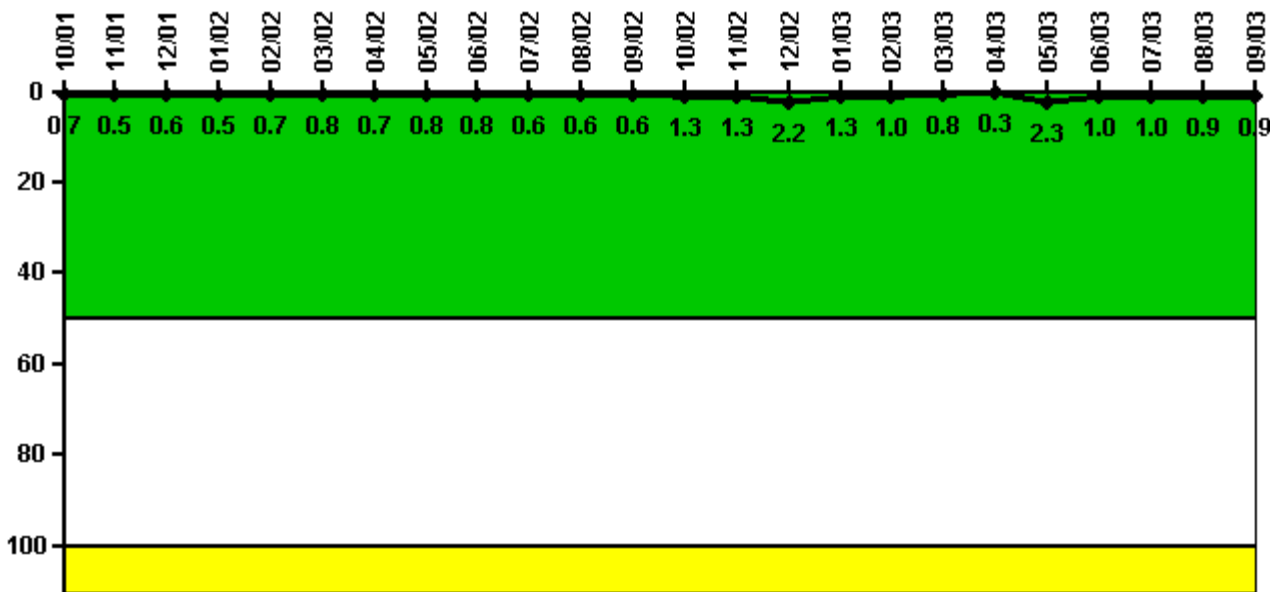
Notes

Reactor Coolant System Activity	10/01	11/01	12/01	1/02	2/02	3/02	4/02	5/02	6/02	7/02	8/02	9/02
Maximum activity	0.002000	0.002000	0.002000	0.002000	0.002000	0.002000	0.002000	0.002000	0.002000	0.002000	0.002000	0.002000
Technical specification limit	1.0	1.0	1.0	1.0	1.0	1.0	1.0	1.0	1.0	1.0	1.0	1.0
Indicator value	0.2	0.2	0.2	0.2	0.2	0.2	0.2	0.2	0.2	0.2	0.2	0.2

Reactor Coolant System Activity	10/02	11/02	12/02	1/03	2/03	3/03	4/03	5/03	6/03	7/03	8/03	9/03
Maximum activity	0.002000	0.002000	0.002000	0.004000	0.001000	0.001000	0.001000	0.001000	0.001000	0.002000	0.003000	0.002000
Technical specification limit	1.0	1.0	1.0	1.0	1.0	1.0	1.0	1.0	1.0	1.0	1.0	1.0
Indicator value	0.2	0.2	0.2	0.4	0.1	0.1	0.1	0.1	0.1	0.2	0.3	0.2

Licensee Comments: none

Reactor Coolant System Leakage



Thresholds: White > 50.0 Yellow > 100.0

Notes

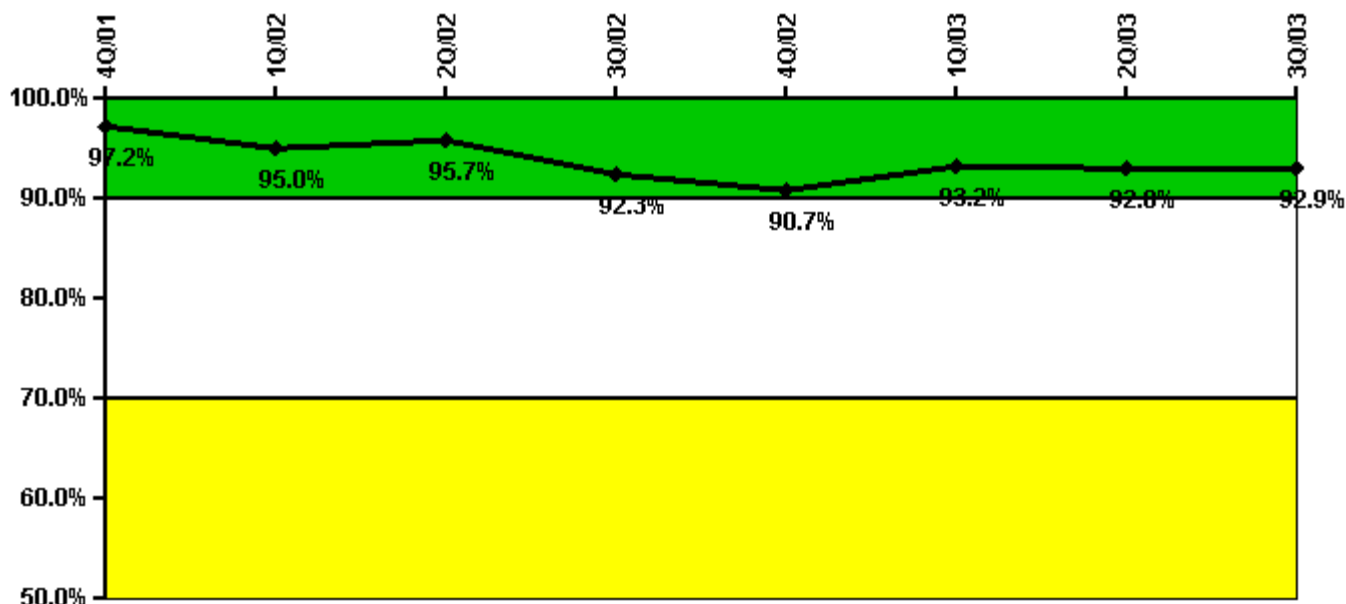
Reactor Coolant System Leakage	10/01	11/01	12/01	1/02	2/02	3/02	4/02	5/02	6/02	7/02	8/02	9/02
Maximum leakage	0.070	0.050	0.060	0.050	0.070	0.080	0.070	0.080	0.080	0.060	0.060	0.060
Technical specification limit	10.0	10.0	10.0	10.0	10.0	10.0	10.0	10.0	10.0	10.0	10.0	10.0
Indicator value	0.7	0.5	0.6	0.5	0.7	0.8	0.7	0.8	0.8	0.6	0.6	0.6

Reactor Coolant System Leakage	10/02	11/02	12/02	1/03	2/03	3/03	4/03	5/03	6/03	7/03	8/03	9/03
Maximum leakage	0.130	0.130	0.220	0.130	0.100	0.080	0.030	0.230	0.100	0.100	0.090	0.090
Technical specification limit	10.0	10.0	10.0	10.0	10.0	10.0	10.0	10.0	10.0	10.0	10.0	10.0
Indicator value	1.3	1.3	2.2	1.3	1.0	0.8	0.3	2.3	1.0	1.0	0.9	0.9

Licensee Comments:

9/03: Effective May 2003 the RCS Leakage being recorded is RCS TOTAL leakage versus RCS IDENTIFIED leakage. RCS Identified Leakage is generated only when RCS Total Leakage exceeds 1 GPM.

Drill/Exercise Performance



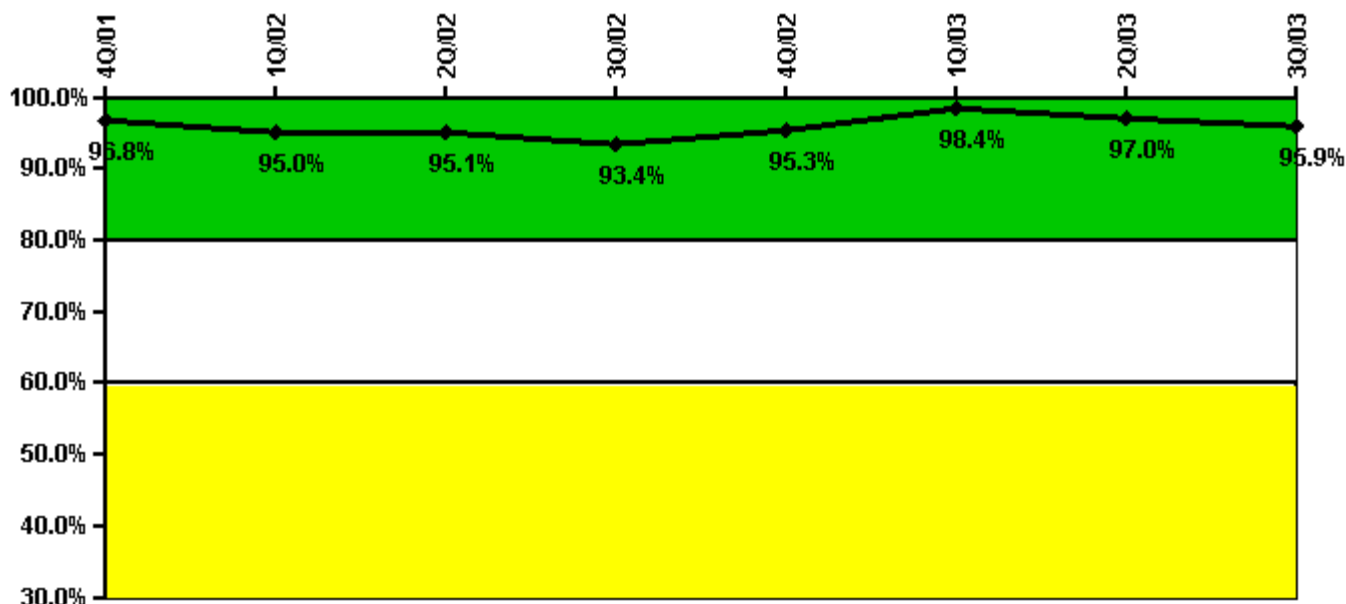
Thresholds: White < 90.0% Yellow < 70.0%

Notes

Drill/Exercise Performance	4Q/01	1Q/02	2Q/02	3Q/02	4Q/02	1Q/03	2Q/03	3Q/03
Successful opportunities	0	1.0	0	39.0	11.0	60.0	49.0	22.0
Total opportunities	0	3.0	0	43.0	14.0	61.0	52.0	23.0
Indicator value	97.2%	95.0%	95.7%	92.3%	90.7%	93.2%	92.8%	92.9%

Licensee Comments: none

ERO Drill Participation



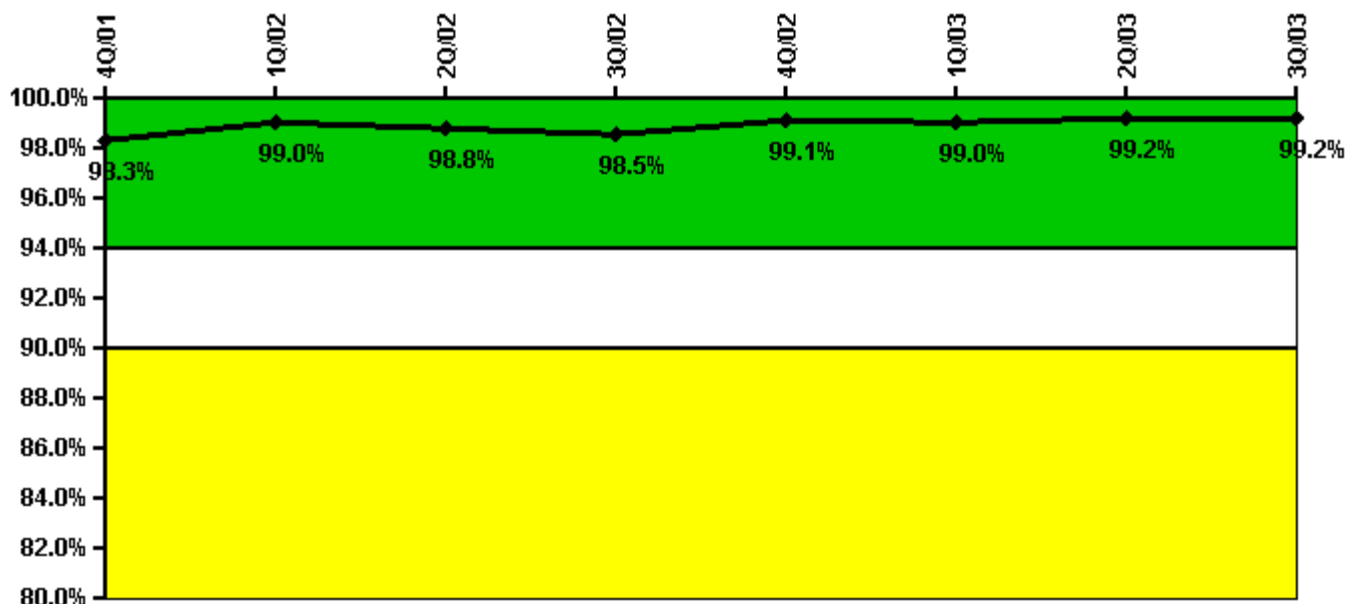
Thresholds: White < 80.0% Yellow < 60.0%

Notes

ERO Drill Participation	4Q/01	1Q/02	2Q/02	3Q/02	4Q/02	1Q/03	2Q/03	3Q/03
Participating Key personnel	61.0	57.0	58.0	57.0	61.0	63.0	65.0	70.0
Total Key personnel	63.0	60.0	61.0	61.0	64.0	64.0	67.0	73.0
Indicator value	96.8%	95.0%	95.1%	93.4%	95.3%	98.4%	97.0%	95.9%

Licensee Comments: none

Alert & Notification System



Thresholds: White < 94.0% Yellow < 90.0%

Notes

Alert & Notification System	4Q/01	1Q/02	2Q/02	3Q/02	4Q/02	1Q/03	2Q/03	3Q/03
Successful siren-tests	431	390	338	386	488	340	341	386
Total sirens-tests	441	392	343	392	490	343	343	392
Indicator value	98.3%	99.0%	98.8%	98.5%	99.1%	99.0%	99.2%	99.2%

Licensee Comments: none

Occupational Exposure Control Effectiveness



Thresholds: White > 2.0 Yellow > 5.0

Notes

Occupational Exposure Control Effectiveness	4Q/01	1Q/02	2Q/02	3Q/02	4Q/02	1Q/03	2Q/03	3Q/03
High radiation area occurrences	0	0	0	0	0	0	0	0
Very high radiation area occurrences	0	0	0	0	0	0	0	0
Unintended exposure occurrences	0	0	0	0	0	0	0	0
Indicator value	0	0	0	0	0	0	0	0

Licensee Comments: none

RETS/ODCM Radiological Effluent



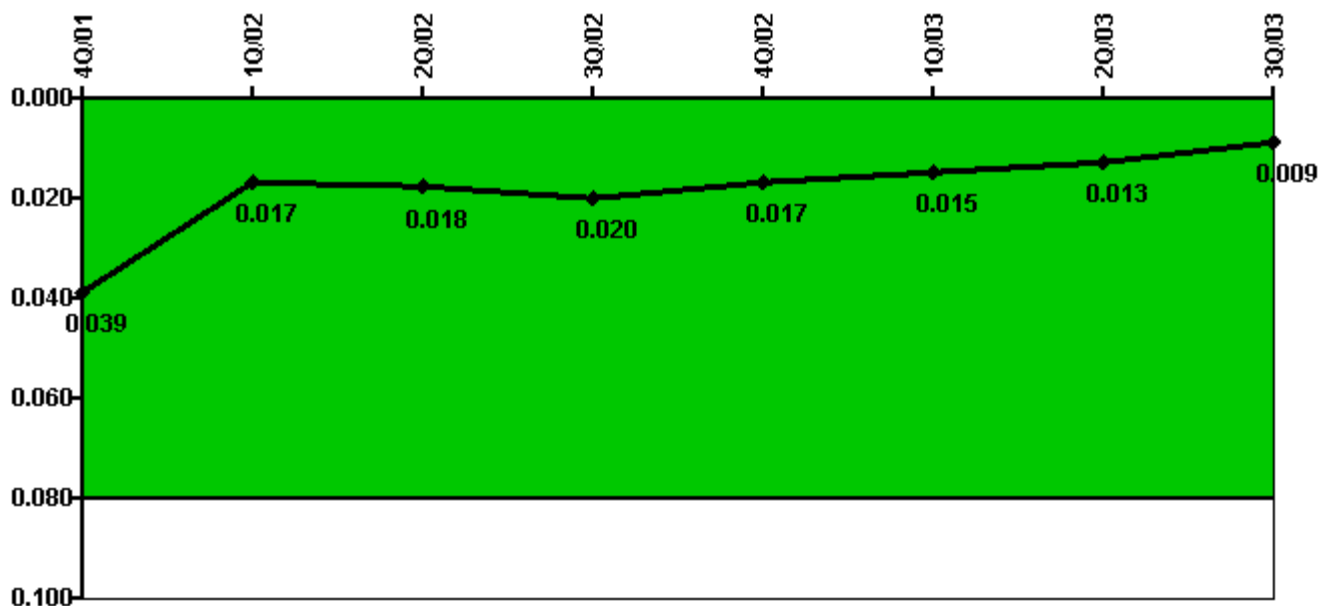
Thresholds: White > 1.0 Yellow > 3.0

Notes

RETS/ODCM Radiological Effluent	4Q/01	1Q/02	2Q/02	3Q/02	4Q/02	1Q/03	2Q/03	3Q/03
RETS/ODCM occurrences	0	0	0	0	0	0	0	0
Indicator value	0	0	0	0	0	0	0	0

Licensee Comments: none

Protected Area Security Performance Index



Thresholds: White > 0.080

Notes

Protected Area Security Performance Index	4Q/01	1Q/02	2Q/02	3Q/02	4Q/02	1Q/03	2Q/03	3Q/03
IDS compensatory hours	82.30	40.90	141.20	145.30	15.70	18.60	89.10	66.00
CCTV compensatory hours	0	4.5	1.2	0	1.8	0	0	0
IDS normalization factor	1.20	1.20	1.20	1.20	1.20	1.20	1.20	1.20
CCTV normalization factor	1.8	1.8	1.8	1.8	1.8	1.8	1.8	1.8
Index Value	0.039	0.017	0.018	0.020	0.017	0.015	0.013	0.009

Licensee Comments: none

Personnel Screening Program



Thresholds: White > 2.0 Yellow > 5.0

Notes

Personnel Screening Program	4Q/01	1Q/02	2Q/02	3Q/02	4Q/02	1Q/03	2Q/03	3Q/03
Program failures	0	0	0	0	0	0	0	0
Indicator value	0	0	0	0	0	0	0	0

Licensee Comments: none

FFD/Personnel Reliability



Thresholds: White > 2.0 Yellow > 5.0

Notes

FFD/Personnel Reliability	4Q/01	1Q/02	2Q/02	3Q/02	4Q/02	1Q/03	2Q/03	3Q/03
Program Failures	0	0	0	0	0	0	0	0
Indicator value	0	0	0	0	0	0	0	0

Licensee Comments: none

▲ [PI Summary](#) | [Inspection Findings Summary](#) | [Reactor Oversight Process](#)

Last Modified: October 22, 2003