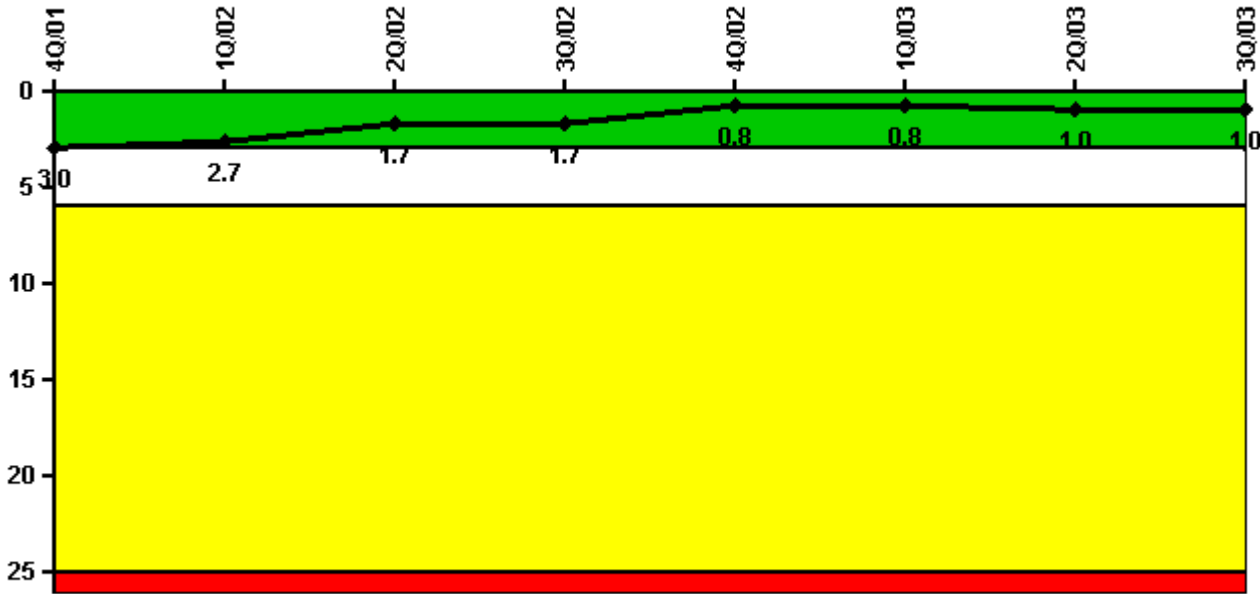


Perry 1

3Q/2003 Performance Indicators

Licensee's General Comments: none

Unplanned Scrams per 7000 Critical Hrs



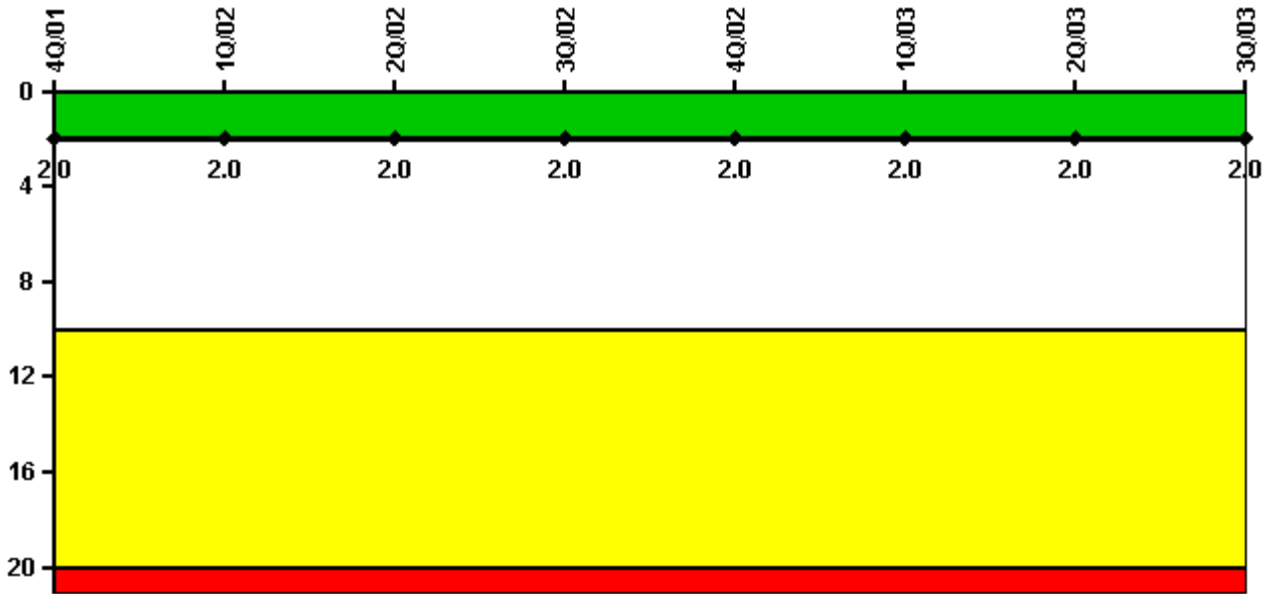
Thresholds: White > 3.0 Yellow > 6.0 Red > 25.0

Notes

Unplanned Scrams per 7000 Critical Hrs	4Q/01	1Q/02	2Q/02	3Q/02	4Q/02	1Q/03	2Q/03	3Q/03
Unplanned scrams	1.0	0	0	1.0	0	0	0	1.0
Critical hours	2156.2	2160.0	2026.0	1993.7	2138.6	2160.0	900.6	2071.6
Indicator value	3.0	2.7	1.7	1.7	0.8	0.8	1.0	1.0

Licensee Comments: none

Scrams with Loss of Normal Heat Removal



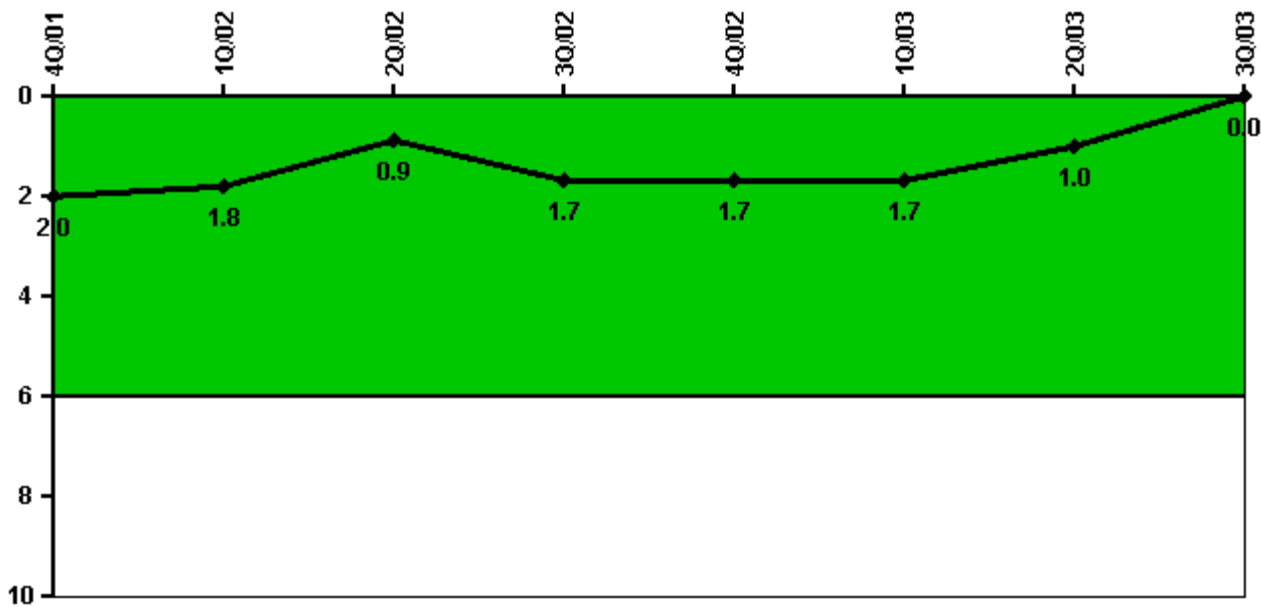
Thresholds: White > 2.0 Yellow > 10.0 Red > 20.0

Notes

Scrams with Loss of Normal Heat Removal	4Q/01	1Q/02	2Q/02	3Q/02	4Q/02	1Q/03	2Q/03	3Q/03
Scrams	0	0	0	0	0	0	0	0
Indicator value	2.0	2.0	2.0	2.0	2.0	2.0	2.0	2.0

Licensee Comments: none

Unplanned Power Changes per 7000 Critical Hrs



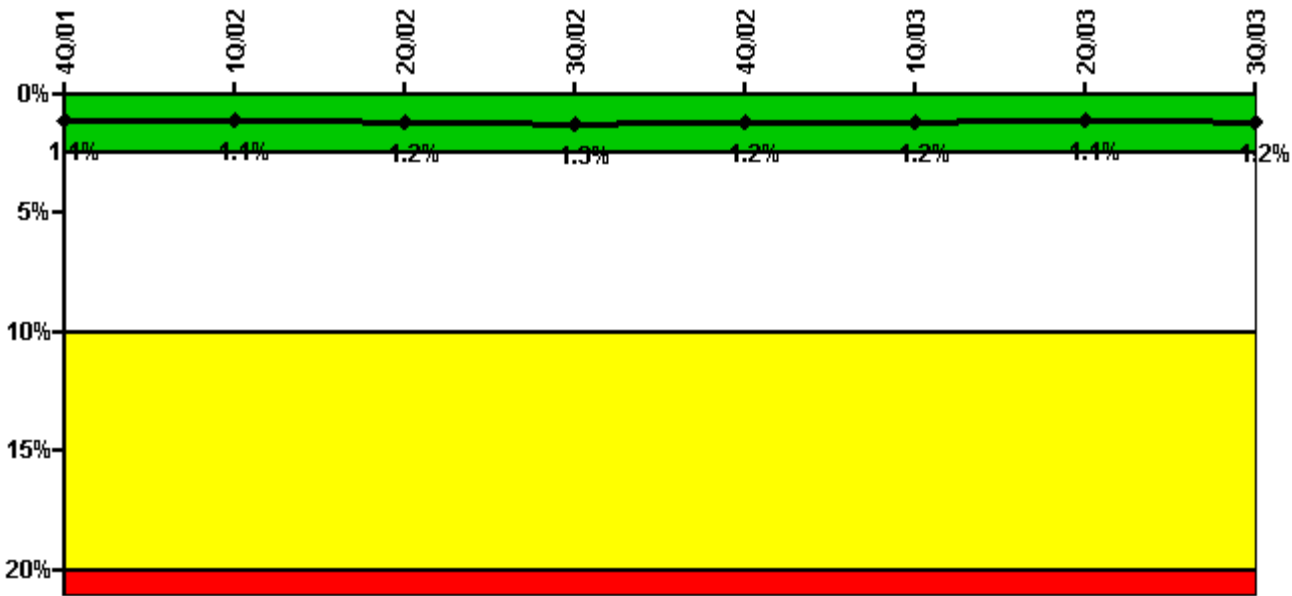
Thresholds: White > 6.0

Notes

Unplanned Power Changes per 7000 Critical Hrs	4Q/01	1Q/02	2Q/02	3Q/02	4Q/02	1Q/03	2Q/03	3Q/03
Unplanned power changes	0	0	1.0	1.0	0	0	0	0
Critical hours	2156.2	2160.0	2026.0	1993.7	2138.6	2160.0	900.6	2071.6
Indicator value	2.0	1.8	0.9	1.7	1.7	1.7	1.0	0

Licensee Comments: none

Safety System Unavailability, Emergency AC Power, >2EDG



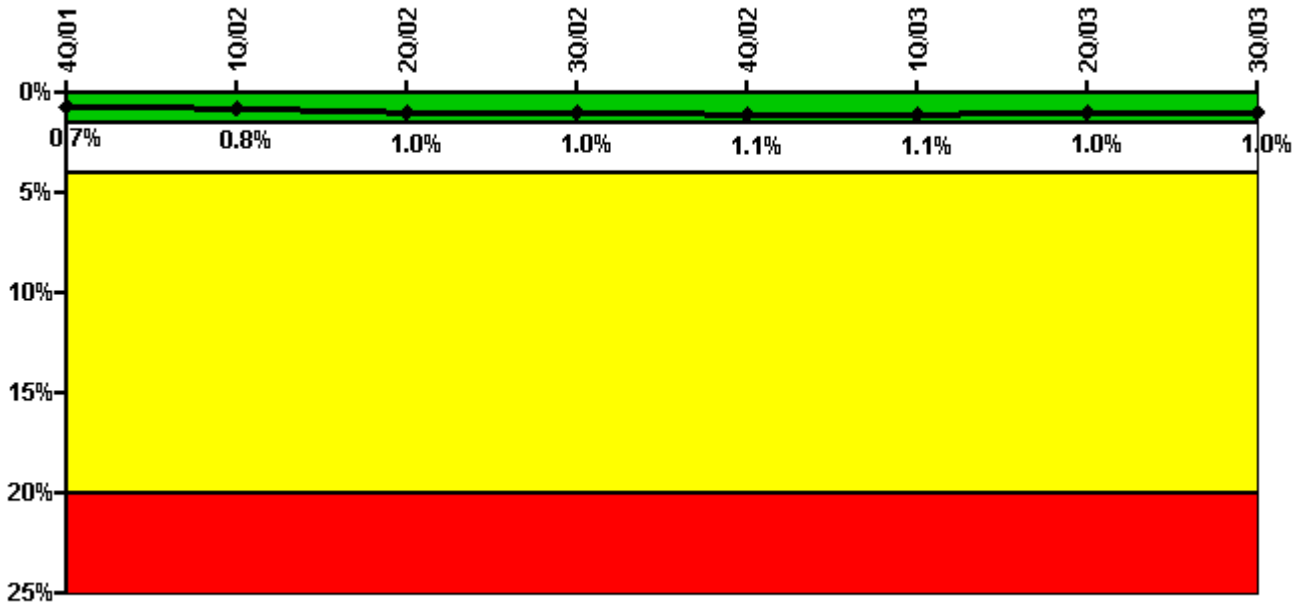
Thresholds: White > 2.5% Yellow > 10.0% Red > 20.0%

Notes

Safety System Unavailability, Emergency AC Power, >2EDG	4Q/01	1Q/02	2Q/02	3Q/02	4Q/02	1Q/03	2Q/03	3Q/03
Train 1								
Planned unavailable hours	15.95	25.00	58.03	5.80	5.05	23.02	2.47	6.71
Unplanned unavailable hours	0	0	0	0	0	0	0	96.17
Fault exposure hours	0	0	0	0	0	0	0	0
Effective Reset hours	0	0	0	0	0	0	0	0
Required hours	2209.00	2160.00	2183.00	2208.00	2209.00	2160.00	2183.00	2208.00
Train 2								
Planned unavailable hours	64.51	6.74	20.78	4.69	23.47	6.13	3.84	38.04
Unplanned unavailable hours	0	0	0	65.71	45.82	0.17	0	44.07
Fault exposure hours	0	0	0	0	0	0	0	0
Effective Reset hours	0	0	0	0	0	0	0	0
Required hours	2209.00	2160.00	2183.00	2208.00	2209.00	2160.00	2183.00	2208.00
Train 3								
Planned unavailable hours	2.15	1.44	1.26	1.55	12.30	30.38	3.65	2.77
Unplanned unavailable hours	0	0	0	0	0	0	0	0
Fault exposure hours	0	0	0	0	0	0	0	0
Effective Reset hours	0	0	0	0	0	0	0	0
Required hours	2209.00	2160.00	2183.00	2208.00	2209.00	2160.00	2183.00	2208.00
Indicator value	1.1%	1.1%	1.2%	1.3%	1.2%	1.2%	1.1%	1.2%

Licensee Comments: none

Safety System Unavailability, High Pressure Injection System (HPCS)



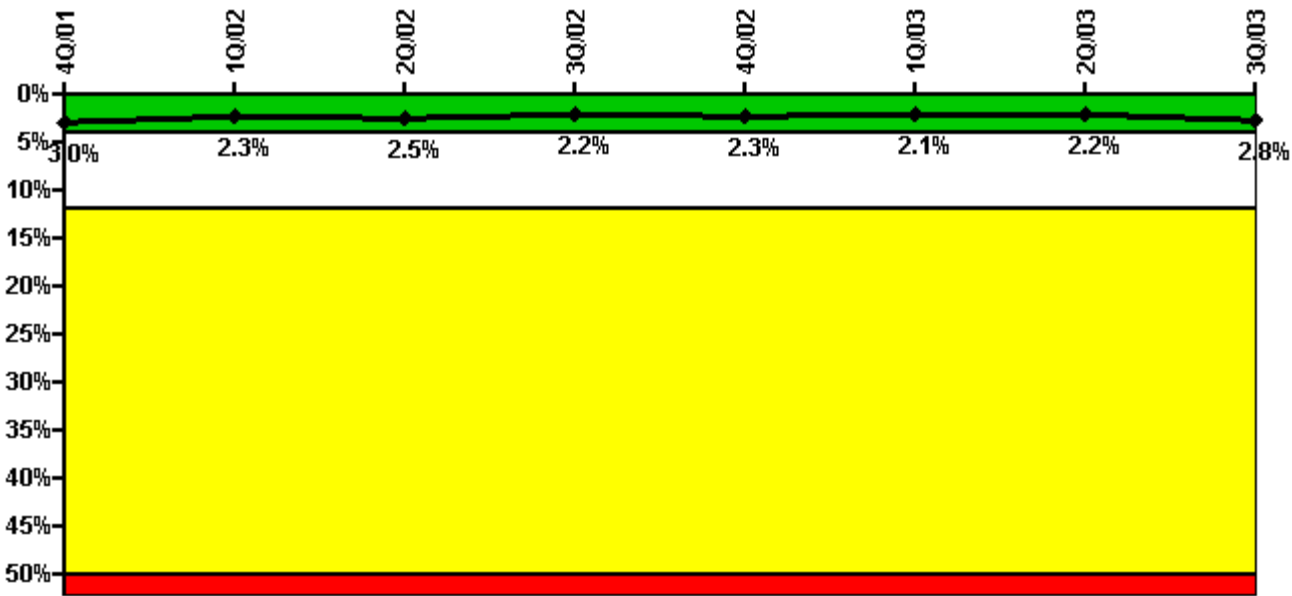
Thresholds: White > 1.5% Yellow > 4.0% Red > 20.0%

Notes

Safety System Unavailability, High Pressure Injection System (HPCS)	4Q/01	1Q/02	2Q/02	3Q/02	4Q/02	1Q/03	2Q/03	3Q/03
Train 1								
Planned unavailable hours	1.22	45.10	97.85	4.12	1.20	16.83	2.22	3.45
Unplanned unavailable hours	0	0	0	0	7.73	0	0	0
Fault exposure hours	0	0	0	0	0	0	0	0
Effective Reset hours	0	0	0	0	0	0	0	0
Required hours	2156.20	2160.00	2026.00	1993.68	2138.60	2160.00	900.60	2071.60
Indicator value	0.7%	0.8%	1.0%	1.0%	1.1%	1.1%	1.0%	1.0%

Licensee Comments: none

Safety System Unavailability, Heat Removal System (RCIC)



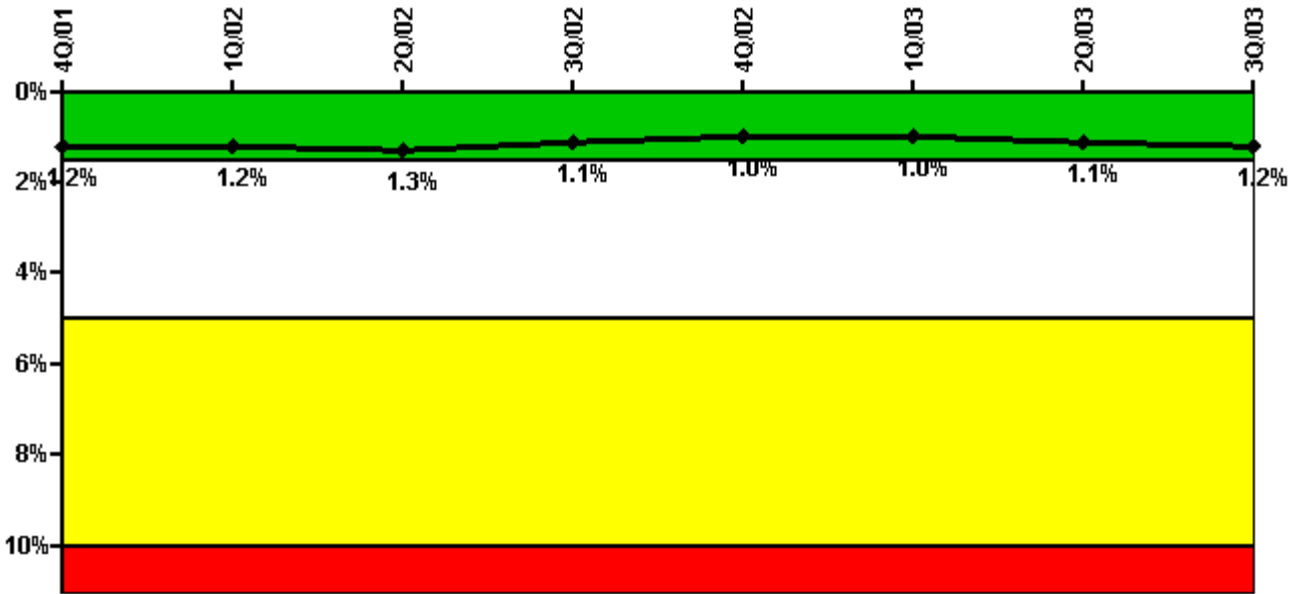
Thresholds: White > 4.0% Yellow > 12.0% Red > 50.0%

Notes

Safety System Unavailability, Heat Removal System (RCIC)	4Q/01	1Q/02	2Q/02	3Q/02	4Q/02	1Q/03	2Q/03	3Q/03
Train 1								
Planned unavailable hours	3.35	114.70	68.58	3.20	19.29	33.05	34.05	60.61
Unplanned unavailable hours	0	0	0	0	0	0	0	119.05
Fault exposure hours	0	0	0	0	0	0	0	0
Effective Reset hours	0	0	0	0	0	0	0	0
Required hours	2156.20	2160.00	2026.00	1993.68	2138.60	2160.00	900.60	2071.60
Indicator value	3.0%	2.3%	2.5%	2.2%	2.3%	2.1%	2.2%	2.8%

Licensee Comments: none

Safety System Unavailability, Residual Heat Removal System



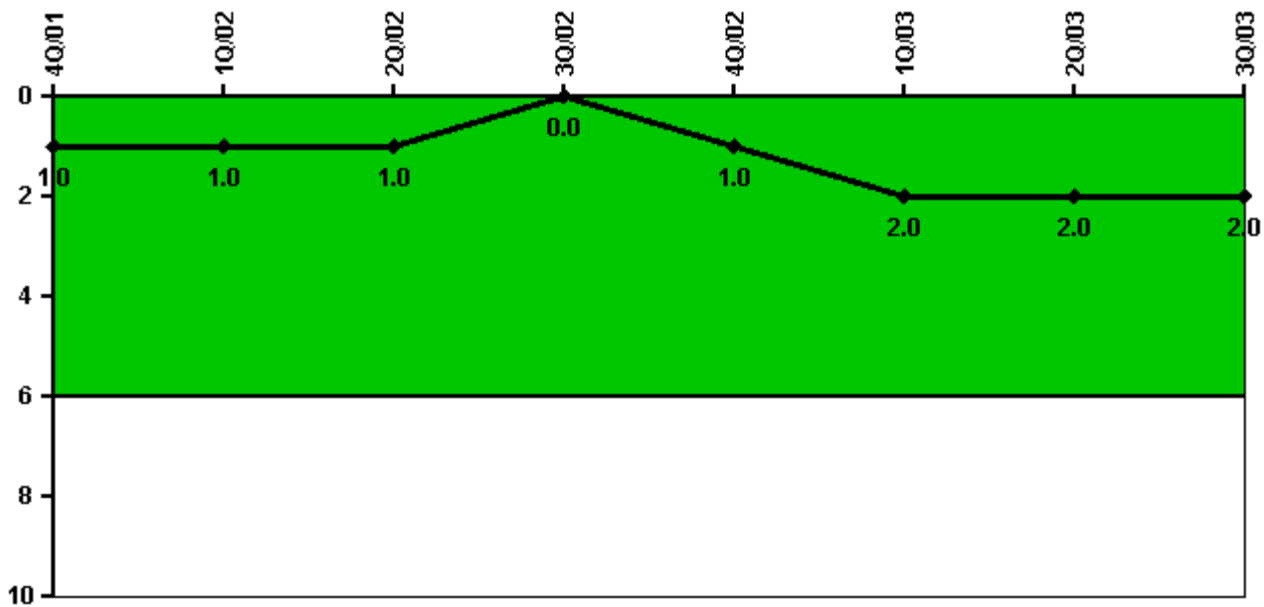
Thresholds: White > 1.5% Yellow > 5.0% Red > 10.0%

Notes

Safety System Unavailability, Residual Heat Removal System	4Q/01	1Q/02	2Q/02	3Q/02	4Q/02	1Q/03	2Q/03	3Q/03
Train 1								
Planned unavailable hours	9.63	1.38	77.22	3.24	0	37.72	30.08	5.98
Unplanned unavailable hours	0	0	0	17.63	0	0	0	116.59
Fault exposure hours	0	0	0	0	0	0	0	0
Effective Reset hours	0	0	0	0	0	0	0	0
Required hours	2209.00	2160.00	2183.00	2208.00	2209.00	2160.00	2183.00	2208.00
Train 2								
Planned unavailable hours	41.42	0	0	0.55	75.35	3.59	0.43	32.21
Unplanned unavailable hours	0	0	0	0	0	0.17	0	0.07
Fault exposure hours	0	0	0	0	0	0	0	0
Effective Reset hours	0	0	0	0	0	0	0	0
Required hours	2209.00	2160.00	2183.00	2208.00	2209.00	2160.00	2183.00	2208.00
Indicator value	1.2%	1.2%	1.3%	1.1%	1.0%	1.0%	1.1%	1.2%

Licensee Comments: none

Safety System Functional Failures (BWR)



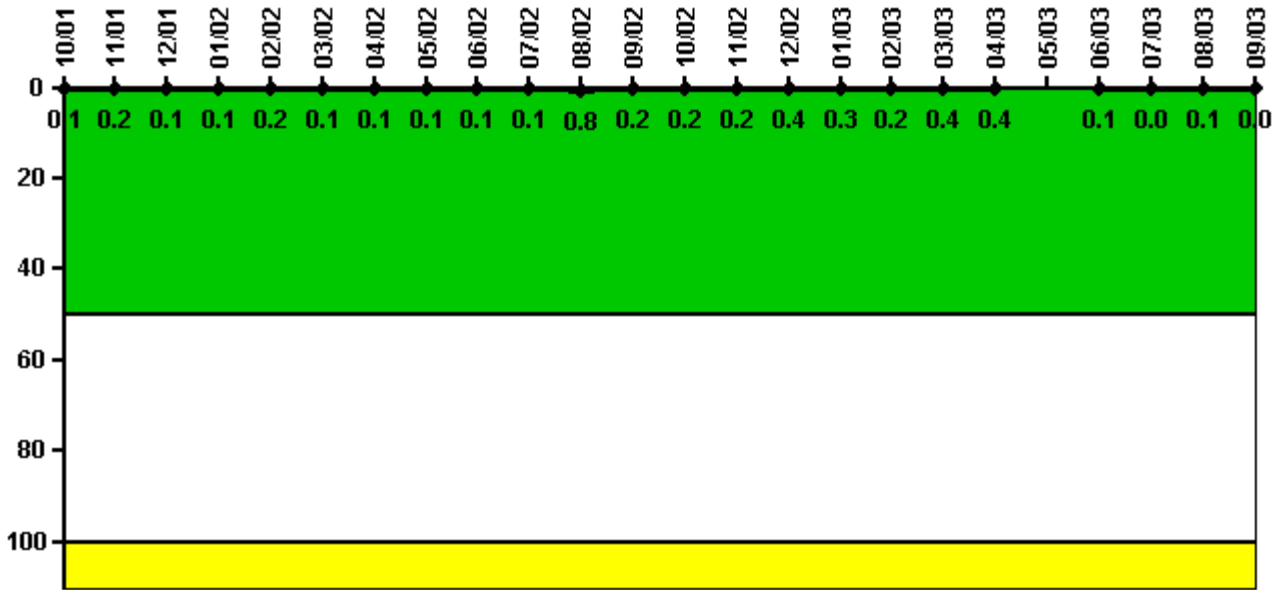
Thresholds: White > 6.0

Notes

Safety System Functional Failures (BWR)	4Q/01	1Q/02	2Q/02	3Q/02	4Q/02	1Q/03	2Q/03	3Q/03
Safety System Functional Failures	0	0	0	0	1	1	0	0
Indicator value	1	1	1	0	1	2	2	2

Licensee Comments: none

Reactor Coolant System Activity



Thresholds: White > 50.0 Yellow > 100.0

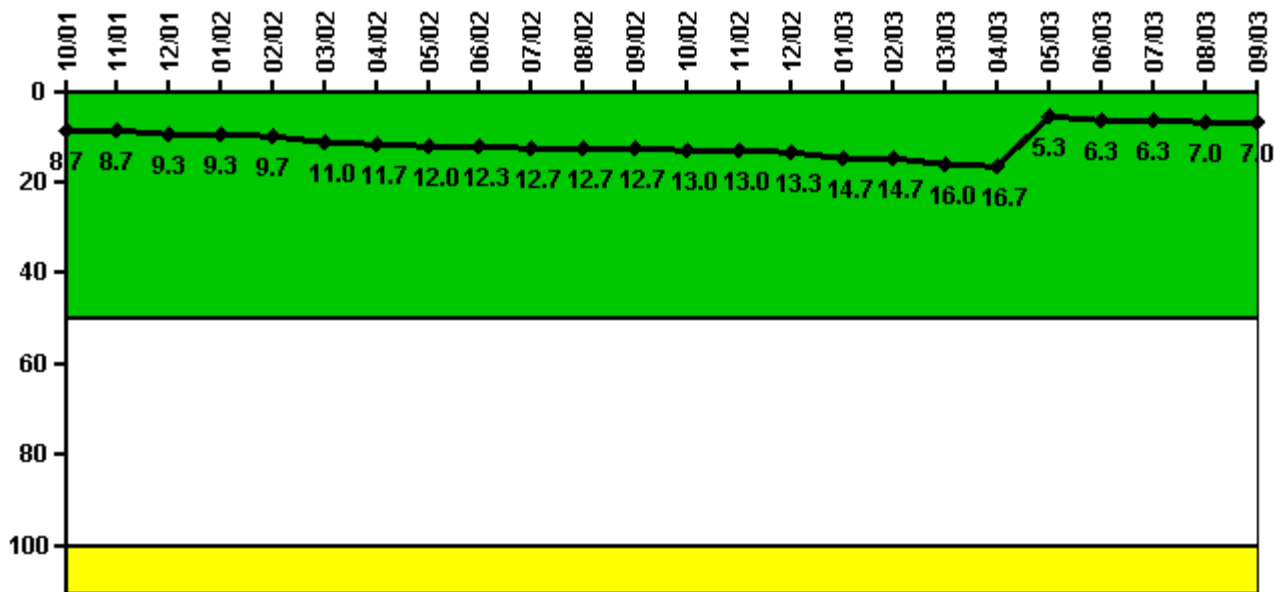
Notes

Reactor Coolant System Activity	10/01	11/01	12/01	1/02	2/02	3/02	4/02	5/02	6/02	7/02	8/02	9/02
Maximum activity	0.000173	0.000311	0.000217	0.000285	0.000315	0.000214	0.000218	0.000241	0.000155	0.000158	0.001530	0.000397
Technical specification limit	0.2	0.2	0.2	0.2	0.2	0.2	0.2	0.2	0.2	0.2	0.2	0.2
Indicator value	0.1	0.2	0.1	0.1	0.2	0.1	0.1	0.1	0.1	0.1	0.8	0.2

Reactor Coolant System Activity	10/02	11/02	12/02	1/03	2/03	3/03	4/03	5/03	6/03	7/03	8/03	9/03
Maximum activity	0.000460	0.000438	0.000823	0.000525	0.000497	0.000766	0.000734	N/A	0.000109	0.000090	0.000124	0.000067
Technical specification limit	0.2	0.2	0.2	0.2	0.2	0.2	0.2	0.2	0.2	0.2	0.2	0.2
Indicator value	0.2	0.2	0.4	0.3	0.2	0.4	0.4	N/A	0.1	0	0.1	0

Licensee Comments: none

Reactor Coolant System Leakage



Thresholds: White > 50.0 Yellow > 100.0

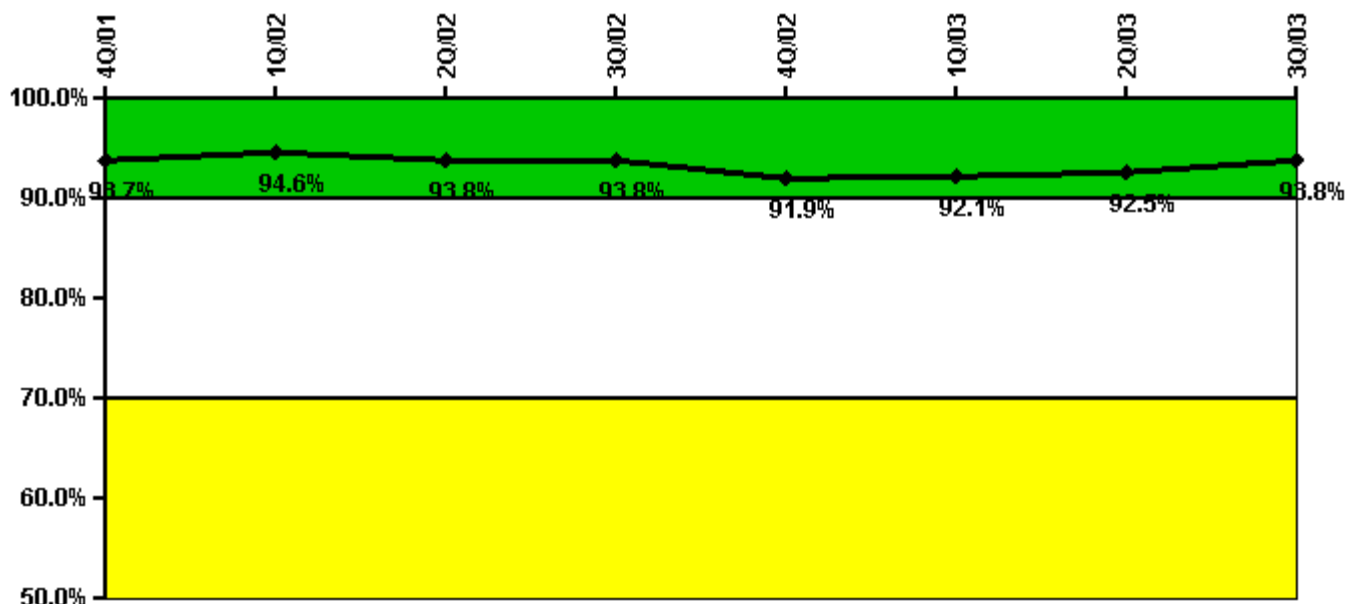
Notes

Reactor Coolant System Leakage	10/01	11/01	12/01	1/02	2/02	3/02	4/02	5/02	6/02	7/02	8/02	9/02
Maximum leakage	2.600	2.600	2.800	2.800	2.900	3.300	3.500	3.600	3.700	3.800	3.800	3.800
Technical specification limit	30.0	30.0	30.0	30.0	30.0	30.0	30.0	30.0	30.0	30.0	30.0	30.0
Indicator value	8.7	8.7	9.3	9.3	9.7	11.0	11.7	12.0	12.3	12.7	12.7	12.7

Reactor Coolant System Leakage	10/02	11/02	12/02	1/03	2/03	3/03	4/03	5/03	6/03	7/03	8/03	9/03
Maximum leakage	3.900	3.900	4.000	4.400	4.400	4.800	5.000	1.600	1.900	1.900	2.100	2.100
Technical specification limit	30.0	30.0	30.0	30.0	30.0	30.0	30.0	30.0	30.0	30.0	30.0	30.0
Indicator value	13.0	13.0	13.3	14.7	14.7	16.0	16.7	5.3	6.3	6.3	7.0	7.0

Licensee Comments: none

Drill/Exercise Performance



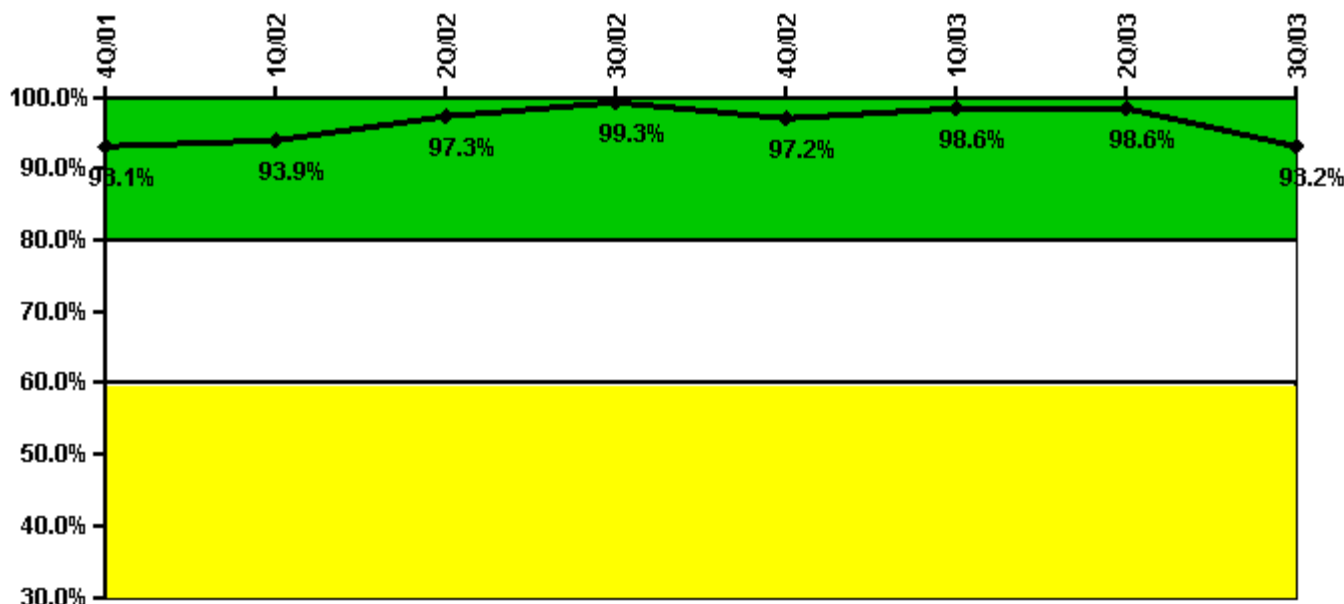
Thresholds: White < 90.0% Yellow < 70.0%

Notes

Drill/Exercise Performance	4Q/01	1Q/02	2Q/02	3Q/02	4Q/02	1Q/03	2Q/03	3Q/03
Successful opportunities	26.0	20.0	39.0	16.0	21.0	17.0	10.0	2.0
Total opportunities	26.0	20.0	42.0	18.0	24.0	18.0	11.0	2.0
Indicator value	93.7%	94.6%	93.8%	93.8%	91.9%	92.1%	92.5%	93.8%

Licensee Comments: none

ERO Drill Participation



Thresholds: White < 80.0% Yellow < 60.0%

Notes

ERO Drill Participation	4Q/01	1Q/02	2Q/02	3Q/02	4Q/02	1Q/03	2Q/03	3Q/03
Participating Key personnel	135.0	139.0	144.0	144.0	140.0	144.0	137.0	137.0
Total Key personnel	145.0	148.0	148.0	145.0	144.0	146.0	139.0	147.0
Indicator value	93.1%	93.9%	97.3%	99.3%	97.2%	98.6%	98.6%	93.2%

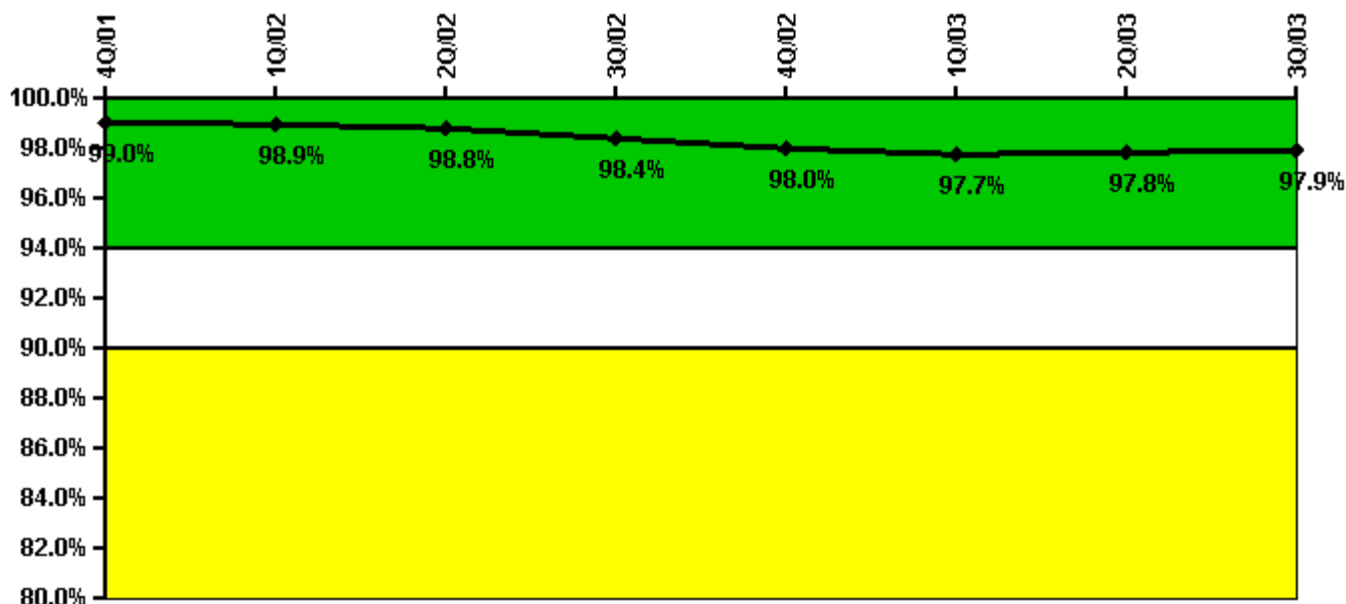
Licensee Comments:

3Q/03: 1Q/2003: Data revised for quarters 2002Q4 and 2003Q2 as a result of an analysis error. In both cases, the key personnel and the number of participating personnel totals increased. These changes do not affect the indicator color.

2Q/03: 1Q/2003: Data revised as a result of an analysis error. See comment for 2003Q3.

4Q/02: 1Q/2003: Data revised as a result of an analysis error. See comment for 2003Q3.

Alert & Notification System



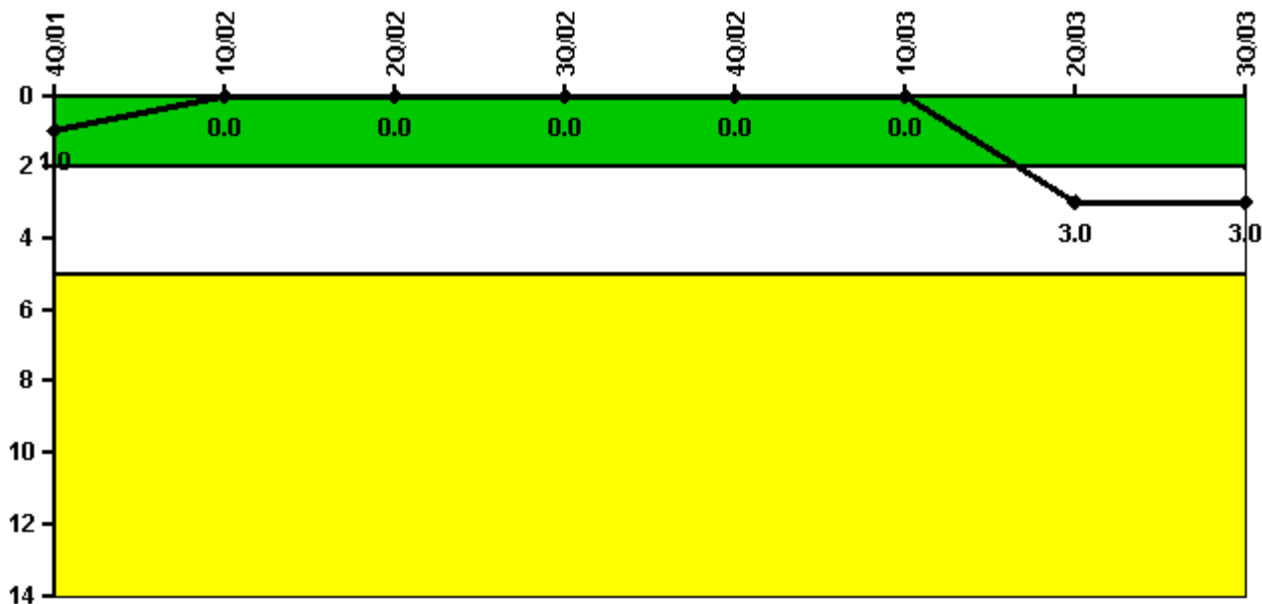
Thresholds: White < 94.0% Yellow < 90.0%

Notes

Alert & Notification System	4Q/01	1Q/02	2Q/02	3Q/02	4Q/02	1Q/03	2Q/03	3Q/03
Successful siren-tests	527	526	519	596	445	594	520	525
Total sirens-tests	532	532	532	608	456	608	532	532
Indicator value	99.0%	98.9%	98.8%	98.4%	98.0%	97.7%	97.8%	97.9%

Licensee Comments: none

Occupational Exposure Control Effectiveness



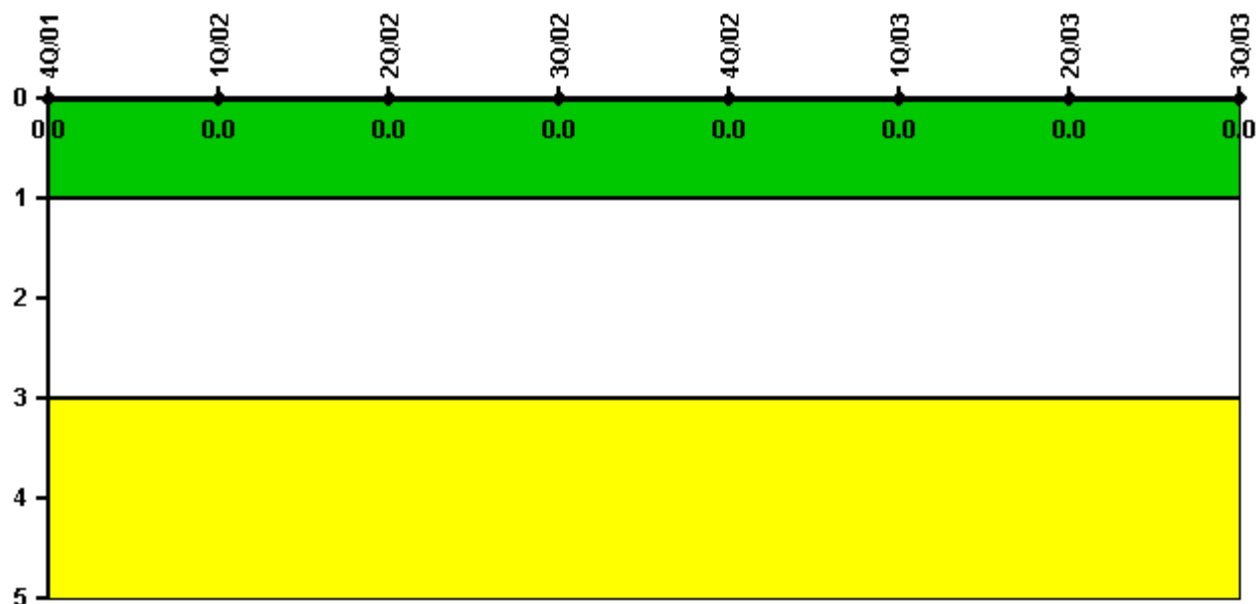
Thresholds: White > 2.0 Yellow > 5.0

Notes

Occupational Exposure Control Effectiveness	4Q/01	1Q/02	2Q/02	3Q/02	4Q/02	1Q/03	2Q/03	3Q/03
High radiation area occurrences	0	0	0	0	0	0	1	0
Very high radiation area occurrences	0	0	0	0	0	0	0	0
Unintended exposure occurrences	0	0	0	0	0	0	2	0
Indicator value	1	0	0	0	0	0	3	3

Licensee Comments: none

RETS/ODCM Radiological Effluent



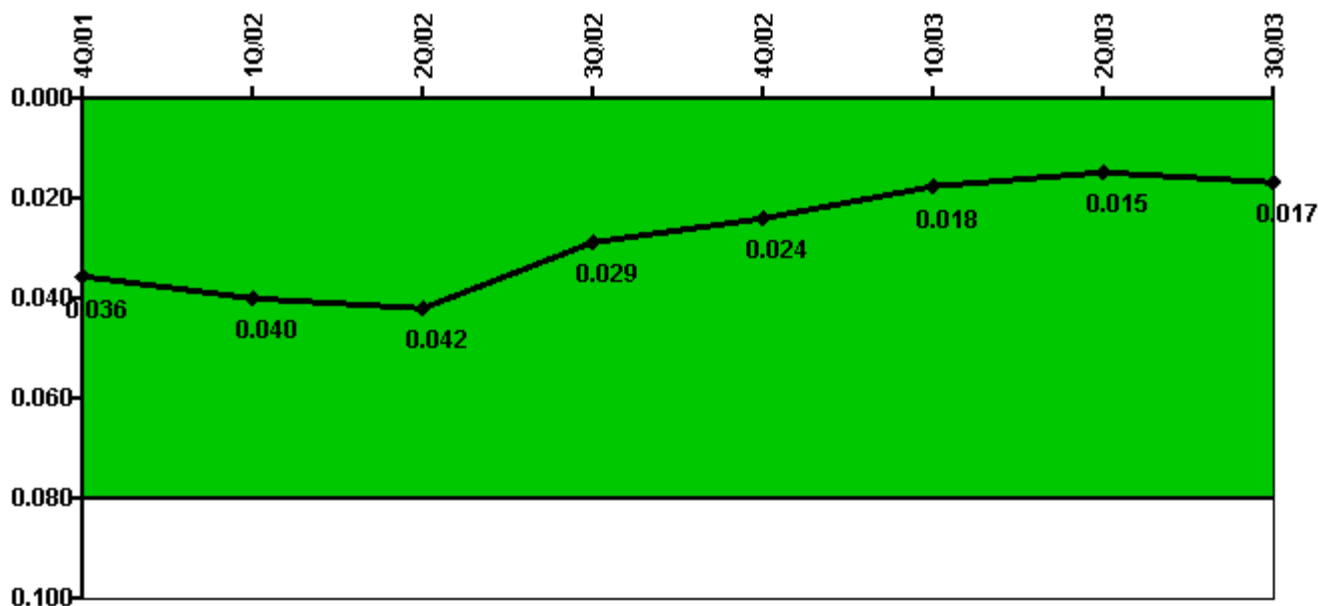
Thresholds: White > 1.0 Yellow > 3.0

Notes

RETS/ODCM Radiological Effluent	4Q/01	1Q/02	2Q/02	3Q/02	4Q/02	1Q/03	2Q/03	3Q/03
RETS/ODCM occurrences	0	0	0	0	0	0	0	0
Indicator value	0	0	0	0	0	0	0	0

Licensee Comments: none

Protected Area Security Performance Index



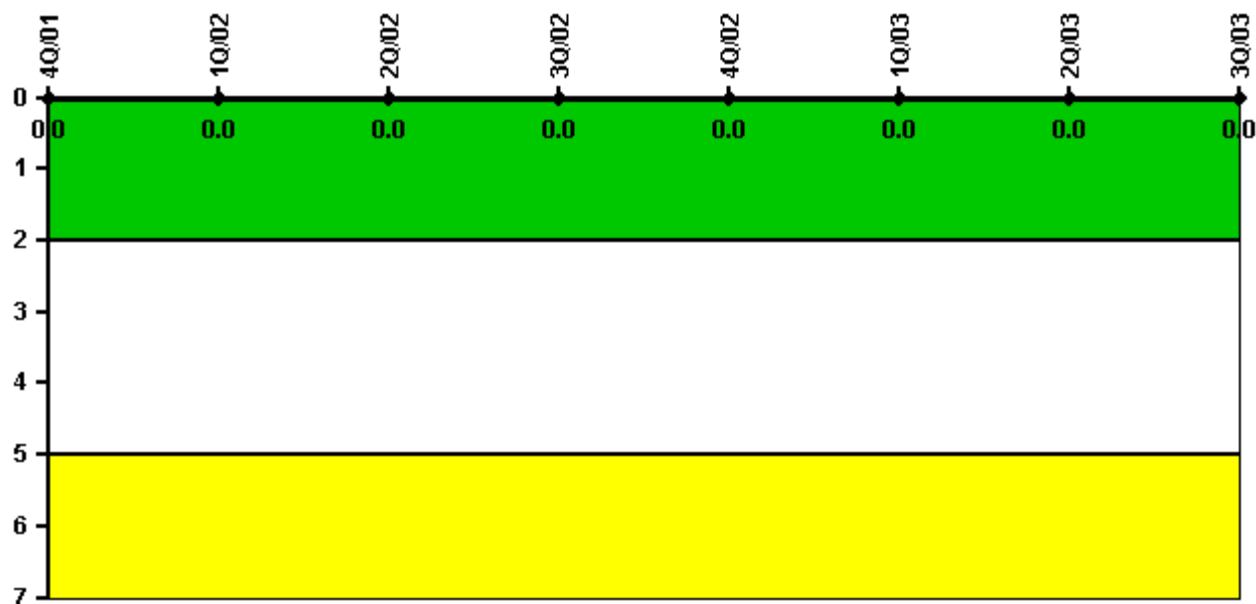
Thresholds: White > 0.080

Notes

Protected Area Security Performance Index	4Q/01	1Q/02	2Q/02	3Q/02	4Q/02	1Q/03	2Q/03	3Q/03
IDS compensatory hours	105.70	149.40	219.40	18.50	12.40	49.50	165.70	64.60
CCTV compensatory hours	0	17.3	12.7	26.9	4.4	5.2	1.0	18.8
IDS normalization factor	1.10	1.10	1.10	1.10	1.10	1.10	1.10	1.10
CCTV normalization factor	1.0	1.0	1.0	1.0	1.0	1.0	1.0	1.0
Index Value	0.036	0.040	0.042	0.029	0.024	0.018	0.015	0.017

Licensee Comments: none

Personnel Screening Program



Thresholds: White > 2.0 Yellow > 5.0

Notes

Personnel Screening Program	4Q/01	1Q/02	2Q/02	3Q/02	4Q/02	1Q/03	2Q/03	3Q/03
Program failures	0	0	0	0	0	0	0	0
Indicator value	0	0	0	0	0	0	0	0

Licensee Comments: none

FFD/Personnel Reliability



Thresholds: White > 2.0 Yellow > 5.0

Notes

FFD/Personnel Reliability	4Q/01	1Q/02	2Q/02	3Q/02	4Q/02	1Q/03	2Q/03	3Q/03
Program Failures	0	0	0	0	0	0	0	0
Indicator value	0	0	0	0	0	0	0	0

Licensee Comments: none

▲ [PI Summary](#) | [Inspection Findings Summary](#) | [Reactor Oversight Process](#)

Last Modified: October 22, 2003