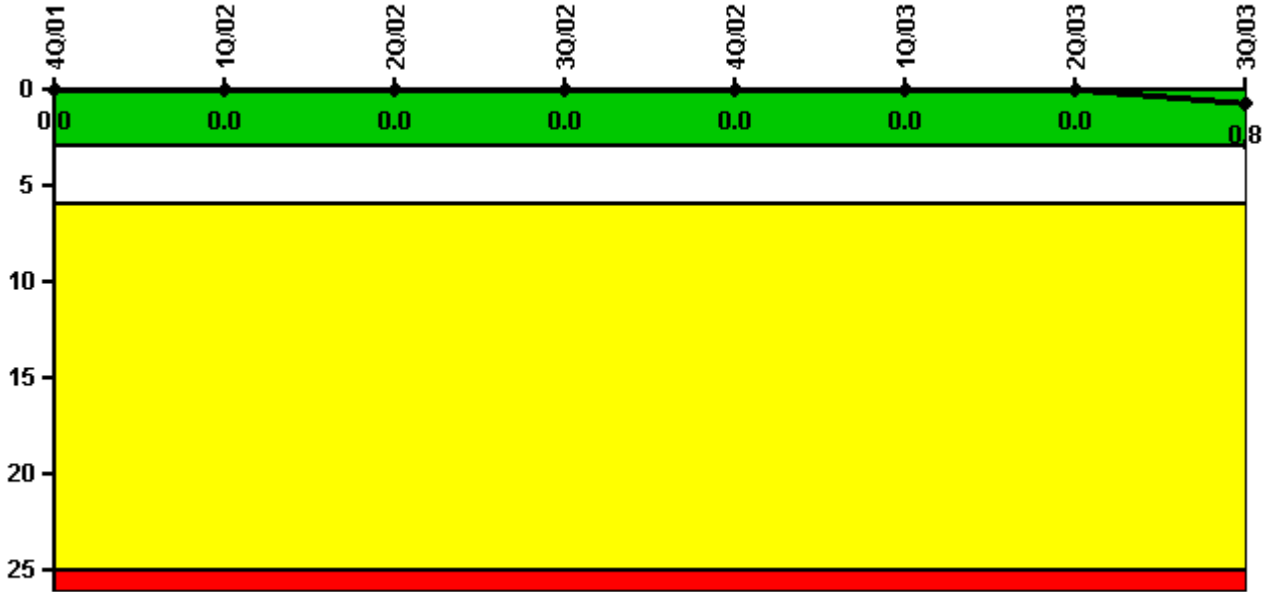


# Peach Bottom 3

## 3Q/2003 Performance Indicators

Licensee's General Comments: none

### Unplanned Scrams per 7000 Critical Hrs



Thresholds: White > 3.0 Yellow > 6.0 Red > 25.0

### Notes

Unplanned Scrams per 7000 Critical Hrs	4Q/01	1Q/02	2Q/02	3Q/02	4Q/02	1Q/03	2Q/03	3Q/03
Unplanned scrams	0	0	0	0	0	0	0	1.0
Critical hours	2017.0	2160.0	2183.0	2208.0	2209.0	2160.0	2183.0	1825.6
Indicator value	0	0	0	0	0	0	0	0.8

Licensee Comments: none

### Scrams with Loss of Normal Heat Removal



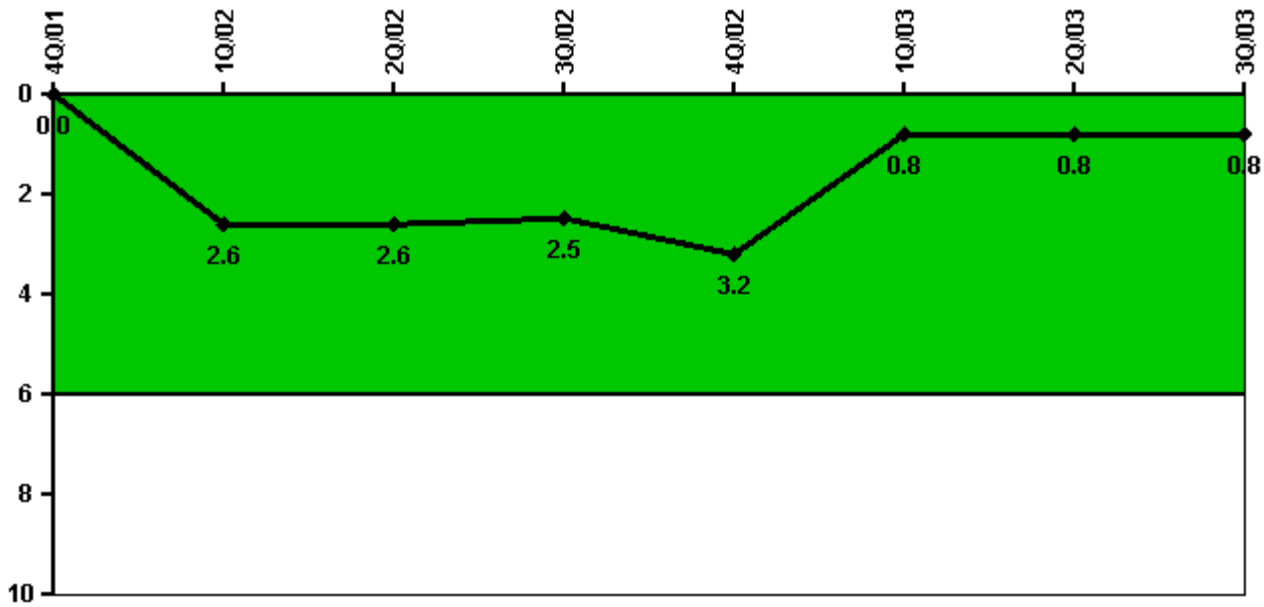
Thresholds: White > 2.0 Yellow > 10.0 Red > 20.0

#### Notes

Scrams with Loss of Normal Heat Removal	4Q/01	1Q/02	2Q/02	3Q/02	4Q/02	1Q/03	2Q/03	3Q/03
Scrams	0	0	0	0	0	0	0	0
Indicator value	0	0	0	0	0	0	0	0

Licensee Comments: none

### Unplanned Power Changes per 7000 Critical Hrs



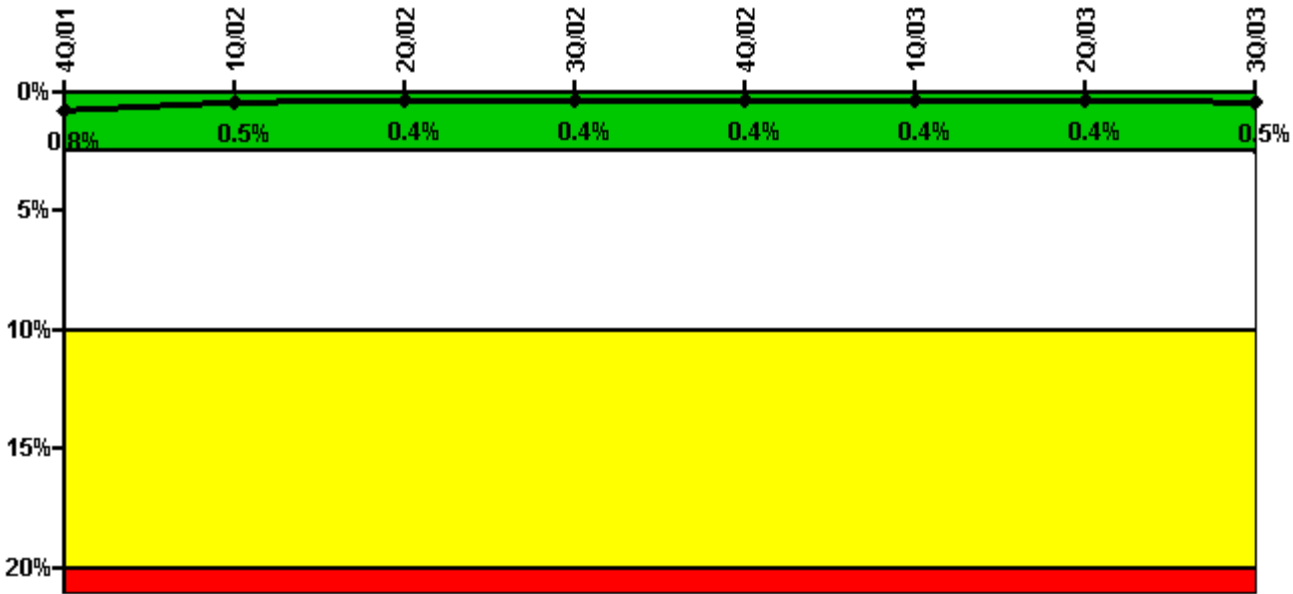
Thresholds: White > 6.0

#### Notes

Unplanned Power Changes per 7000 Critical Hrs	4Q/01	1Q/02	2Q/02	3Q/02	4Q/02	1Q/03	2Q/03	3Q/03
Unplanned power changes	0	3.0	0	0	1.0	0	0	0
Critical hours	2017.0	2160.0	2183.0	2208.0	2209.0	2160.0	2183.0	1825.6
Indicator value	0	2.6	2.6	2.5	3.2	0.8	0.8	0.8

Licensee Comments: none

### Safety System Unavailability, Emergency AC Power, >2EDG



Thresholds: White > 2.5% Yellow > 10.0% Red > 20.0%

#### Notes

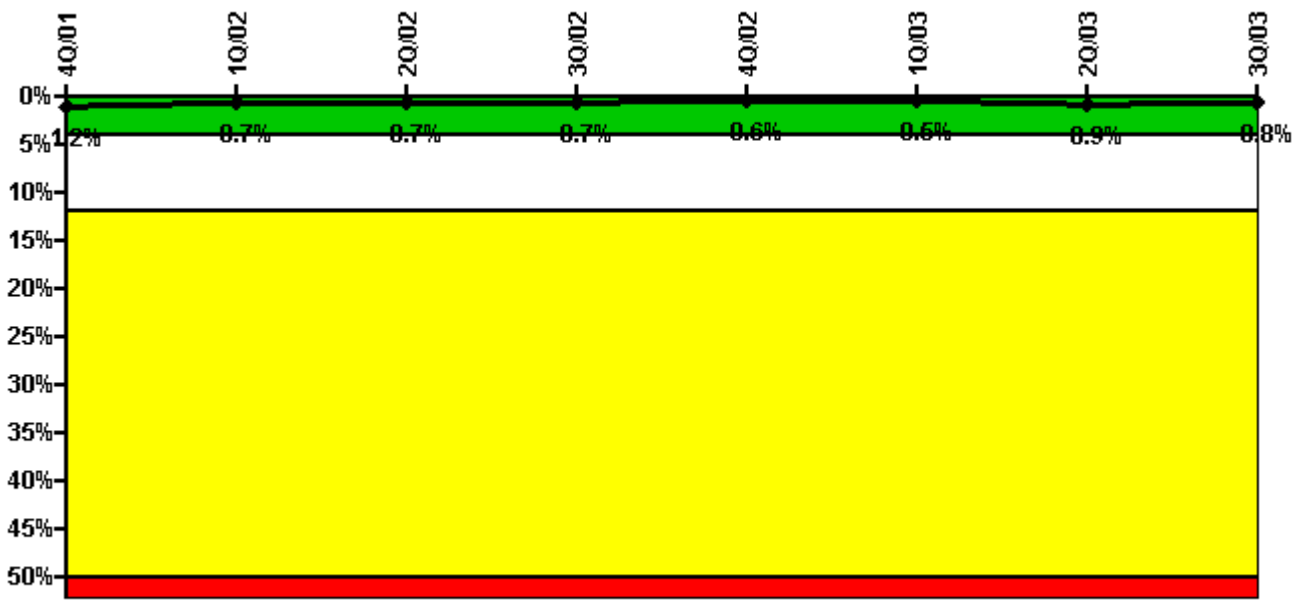
Safety System Unavailability, Emergency AC Power, >2EDG	4Q/01	1Q/02	2Q/02	3Q/02	4Q/02	1Q/03	2Q/03	3Q/03
<b>Train 1</b>								
Planned unavailable hours	0	0	0	18.50	0.50	5.50	0	0
Unplanned unavailable hours	0	0	0	0	0	0	0	0
Fault exposure hours	0	0	0	0	0	0	0	0
Effective Reset hours	0	0	0	0	0	0	0	0
Required hours	2113.75	2160.00	2183.00	2208.00	2209.00	2160.00	2183.00	2100.25
<b>Train 2</b>								
Planned unavailable hours	0	11.25	26.75	0	0	0	0.50	13.50
Unplanned unavailable hours	4.00	0	0	0	0	15.00	0	35.00
Fault exposure hours	216.00	0	0	0	0	0	0	0
Effective Reset hours	0	0	0	0	0	0	0	0
Required hours	2113.75	2160.00	2183.00	2208.00	2209.00	2160.00	2183.00	1969.25
<b>Train 3</b>								
Planned unavailable hours	0	0	0.50	13.25	0	0	6.75	0.33
Unplanned unavailable hours	0	0	20.00	0	1.50	0	0	0
Fault exposure hours	0	0	0	0	0	0	0	0
Effective Reset hours	0	0	0	0	0	0	0	0
Required hours	2113.75	2160.00	2183.00	2208.00	2209.00	2160.00	2183.00	2019.25
<b>Train 4</b>								
Planned unavailable hours	0	0	0	0	0	0	0	13.00
Unplanned unavailable hours	0	7.00	0	0	0	0	0	0
Fault exposure hours	0	0	0	0	0	0	0	0
Effective Reset hours	0	0	0	0	0	0	0	0
Required hours	2113.75	2160.00	2183.00	2208.00	2209.00	2160.00	2183.00	2050.25

Indicator value	0.8%	0.5%	0.4%	0.4%	0.4%	0.4%	0.4%	0.5%

Licensee Comments:

3Q/03: T/2 Fault Exposure for Train 2 = 147 hours. Train 2 tripped due to low jacket coolant pressure.

### Safety System Unavailability, High Pressure Injection System (HPCI)



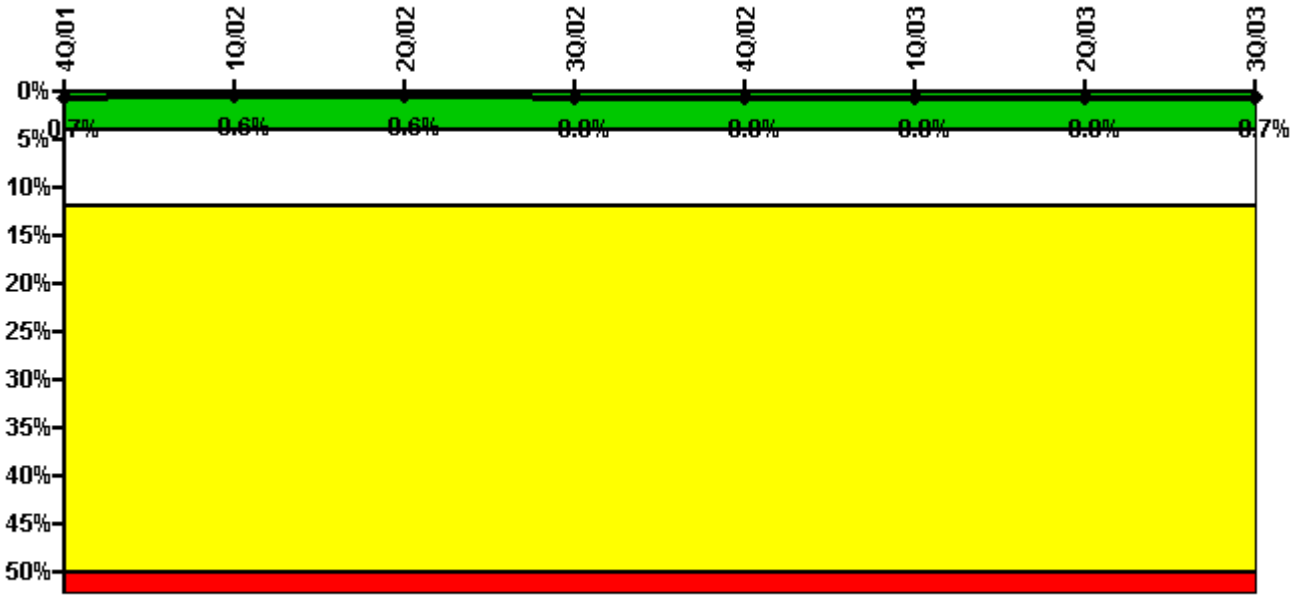
Thresholds: White > 4.0% Yellow > 12.0% Red > 50.0%

### Notes

Safety System Unavailability, High Pressure Injection System (HPCI)	4Q/01	1Q/02	2Q/02	3Q/02	4Q/02	1Q/03	2Q/03	3Q/03
Train 1								
Planned unavailable hours	14.43	4.34	10.64	8.67	4.25	5.34	94.94	0
Unplanned unavailable hours	0	0	0	0	0	0	0	0
Fault exposure hours	0	0	0	0	0	0	0	0
Effective Reset hours	0	0	0	0	0	0	0	0
Required hours	2017.00	2160.00	2183.00	2208.00	2209.00	2160.00	2183.00	1825.55
Indicator value	1.2%	0.7%	0.7%	0.7%	0.6%	0.5%	0.9%	0.8%

Licensee Comments: none

### Safety System Unavailability, Heat Removal System (RCIC)



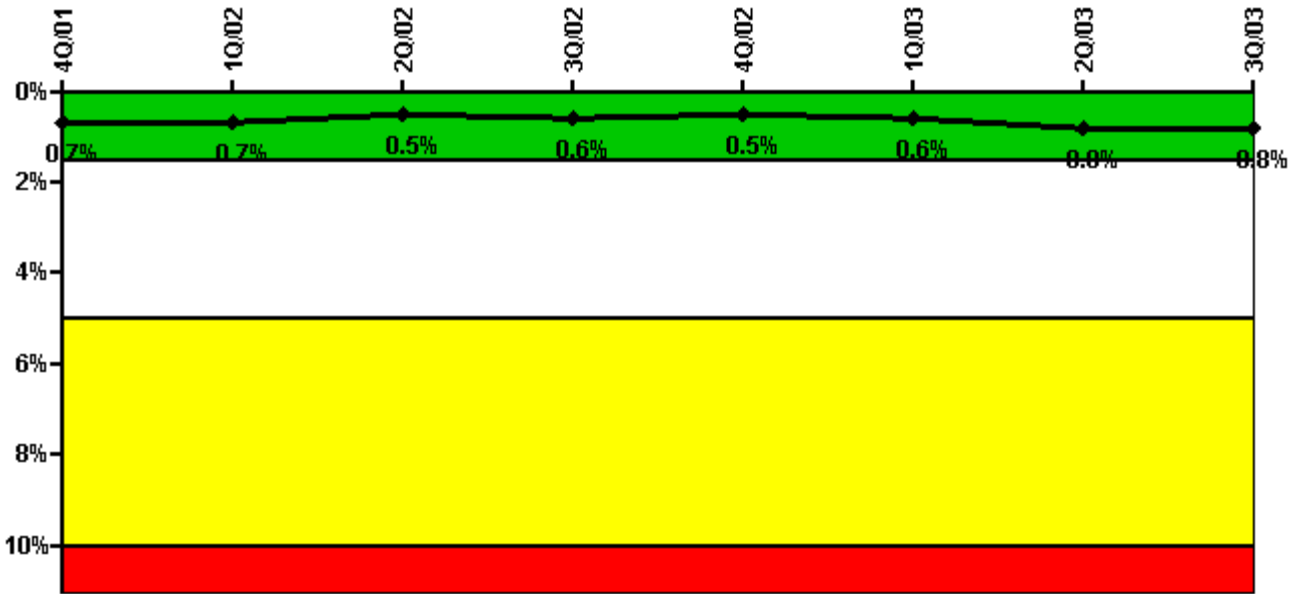
Thresholds: White > 4.0% Yellow > 12.0% Red > 50.0%

#### Notes

Safety System Unavailability, Heat Removal System (RCIC)	4Q/01	1Q/02	2Q/02	3Q/02	4Q/02	1Q/03	2Q/03	3Q/03
Train 1								
Planned unavailable hours	1.52	14.10	15.87	59.22	10.64	4.60	1.82	6.05
Unplanned unavailable hours	0	0	0	0	0	0	0	0
Fault exposure hours	0	0	0	0	0	0	0	0
Effective Reset hours	0	0	0	0	0	0	0	0
Required hours	2017.00	2160.00	2183.00	2208.00	2209.00	2160.00	2183.00	1825.55
Indicator value	0.7%	0.6%	0.6%	0.8%	0.8%	0.8%	0.8%	0.7%

Licensee Comments: none

### Safety System Unavailability, Residual Heat Removal System



Thresholds: White > 1.5% Yellow > 5.0% Red > 10.0%

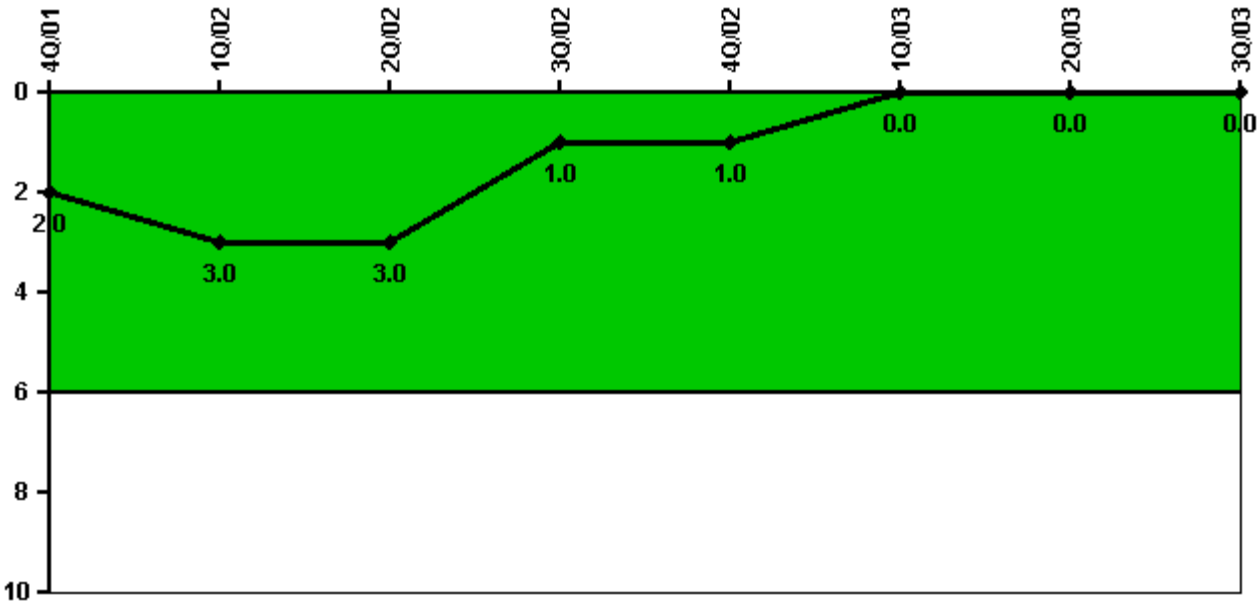
**Notes**

Safety System Unavailability, Residual Heat Removal System	4Q/01	1Q/02	2Q/02	3Q/02	4Q/02	1Q/03	2Q/03	3Q/03
<b>Train 1</b>								
Planned unavailable hours	58.08	0	0	0	47.73	0	47.80	27.75
Unplanned unavailable hours	0	0	0	0	0	0	0	0
Fault exposure hours	0	0	0	0	0	0	0	0
Effective Reset hours	0	0	0	0	0	0	0	0
Required hours	2209.00	2160.00	2183.00	2208.00	2209.00	2160.00	2183.00	2208.00
<b>Train 2</b>								
Planned unavailable hours	0	55.78	1.27	14.12	0	42.45	40.18	0
Unplanned unavailable hours	0	0	0	0	0	0	0	0
Fault exposure hours	0	0	0	0	0	0	0	0
Effective Reset hours	0	0	0	0	0	0	0	0
Required hours	2015.43	2160.00	2183.00	2208.00	2209.00	2160.00	2183.00	1853.58
<b>Indicator value</b>	<b>0.7%</b>	<b>0.7%</b>	<b>0.5%</b>	<b>0.6%</b>	<b>0.5%</b>	<b>0.6%</b>	<b>0.8%</b>	<b>0.8%</b>

Licensee Comments:

3Q/03: Train 2 hrs required due to 3R14

### Safety System Functional Failures (BWR)



Thresholds: White > 6.0

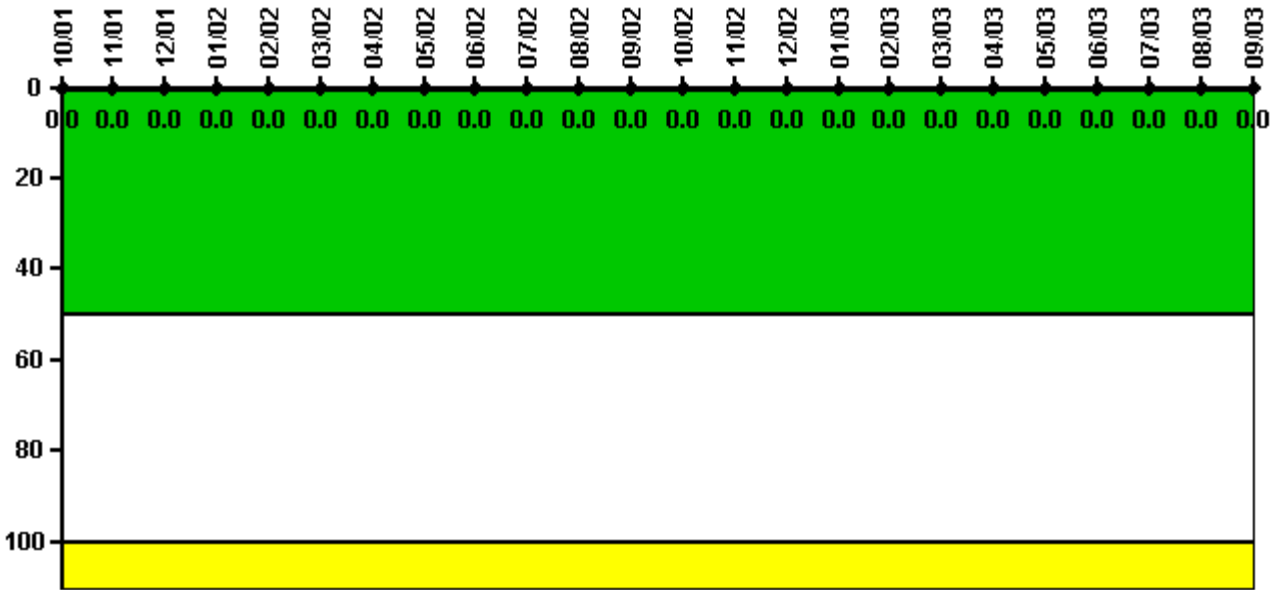
#### Notes

Safety System Functional Failures (BWR)	4Q/01	1Q/02	2Q/02	3Q/02	4Q/02	1Q/03	2Q/03	3Q/03
Safety System Functional Failures	0	1	0	0	0	0	0	0
Indicator value	2	3	3	1	1	0	0	0

Licensee Comments: none



### Reactor Coolant System Activity



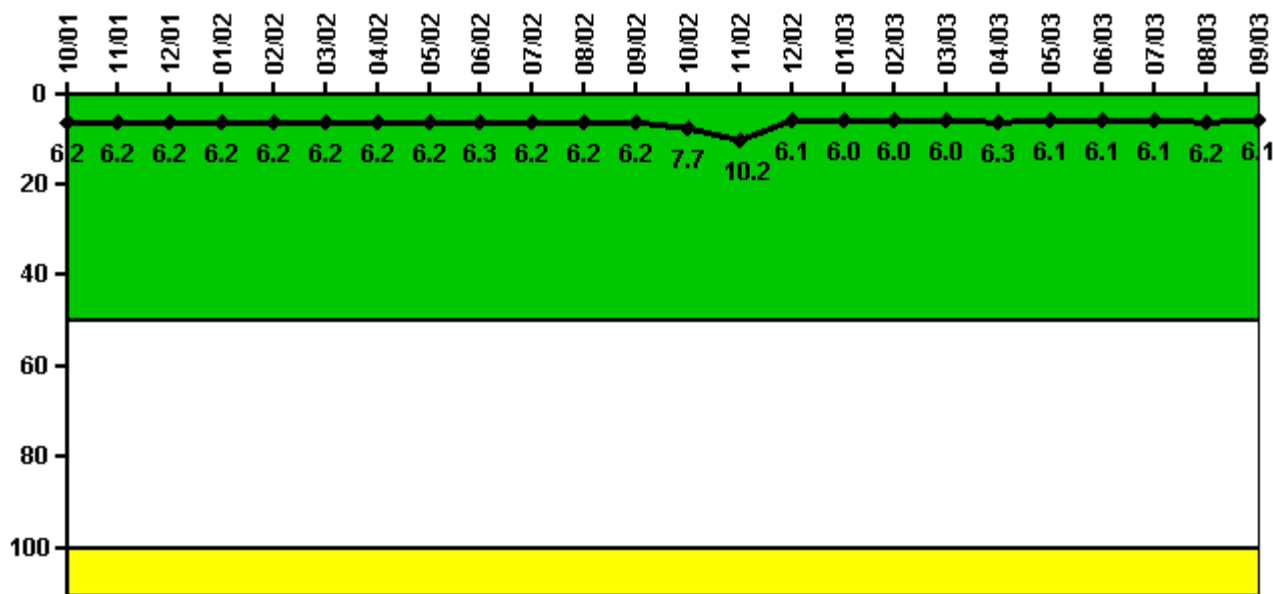
Thresholds: White > 50.0 Yellow > 100.0

**Notes**

Reactor Coolant System Activity	10/01	11/01	12/01	1/02	2/02	3/02	4/02	5/02	6/02	7/02	8/02	9/02
Maximum activity	0.000021	0.000004	0.000003	0.000009	0.000003	0.000003	0.000006	0.000004	0.000013	0.000007	0.000010	0.000004
Technical specification limit	0.2	0.2	0.2	0.2	0.2	0.2	0.2	0.2	0.2	0.2	0.2	0.2
Indicator value	0	0	0	0	0	0	0	0	0	0	0	0
Reactor Coolant System Activity	10/02	11/02	12/02	1/03	2/03	3/03	4/03	5/03	6/03	7/03	8/03	9/03
Maximum activity	0.000004	0.000009	0.000018	0.000007	0.000006	0.000009	0.000007	0.000009	0.000005	0.000006	0.000003	0.000011
Technical specification limit	0.2	0.2	0.2	0.2	0.2	0.2	0.2	0.2	0.2	0.2	0.2	0.2
Indicator value	0	0	0	0	0	0	0	0	0	0	0	0

Licensee Comments: none

### Reactor Coolant System Leakage



Thresholds: White > 50.0 Yellow > 100.0

#### Notes

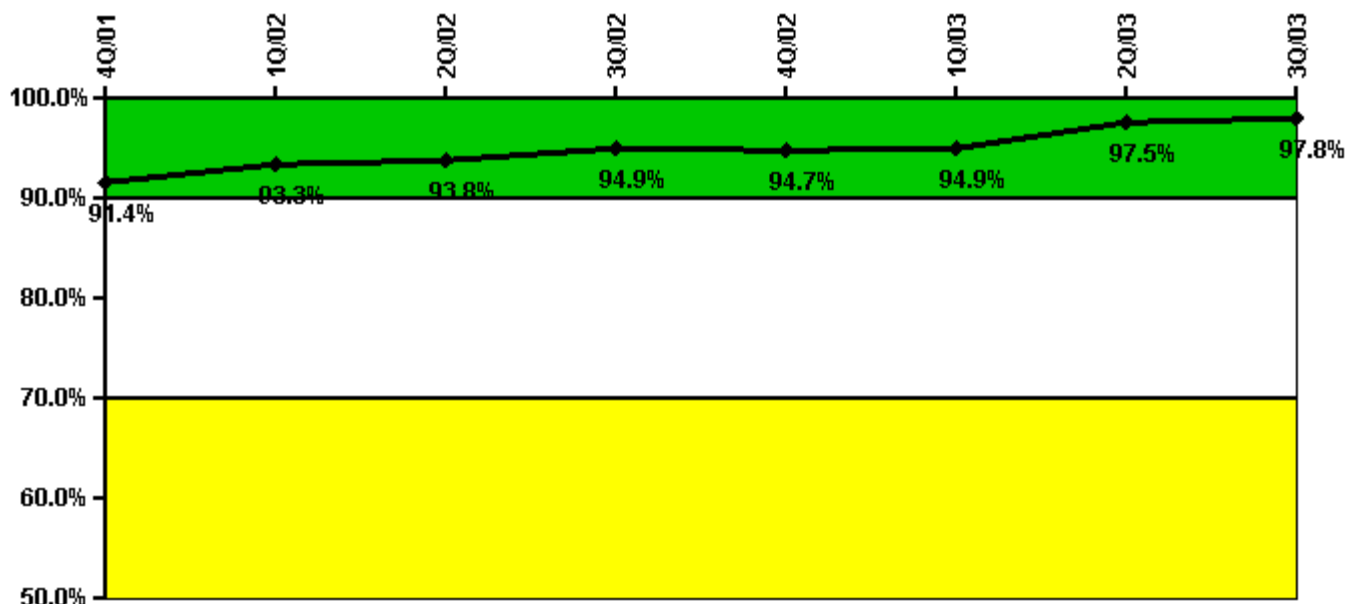
Reactor Coolant System Leakage	10/01	11/01	12/01	1/02	2/02	3/02	4/02	5/02	6/02	7/02	8/02	9/02
Maximum leakage	1.560	1.560	1.540	1.560	1.540	1.560	1.560	1.560	1.570	1.560	1.560	1.560
Technical specification limit	25.0	25.0	25.0	25.0	25.0	25.0	25.0	25.0	25.0	25.0	25.0	25.0
Indicator value	6.2	6.2	6.2	6.2	6.2	6.2	6.2	6.2	6.3	6.2	6.2	6.2

Reactor Coolant System Leakage	10/02	11/02	12/02	1/03	2/03	3/03	4/03	5/03	6/03	7/03	8/03	9/03
Maximum leakage	1.920	2.540	1.520	1.500	1.500	1.490	1.570	1.520	1.530	1.530	1.540	1.530
Technical specification limit	25.0	25.0	25.0	25.0	25.0	25.0	25.0	25.0	25.0	25.0	25.0	25.0
Indicator value	7.7	10.2	6.1	6.0	6.0	6.0	6.3	6.1	6.1	6.1	6.2	6.1

Licensee Comments: none

### Drill/Exercise Performance



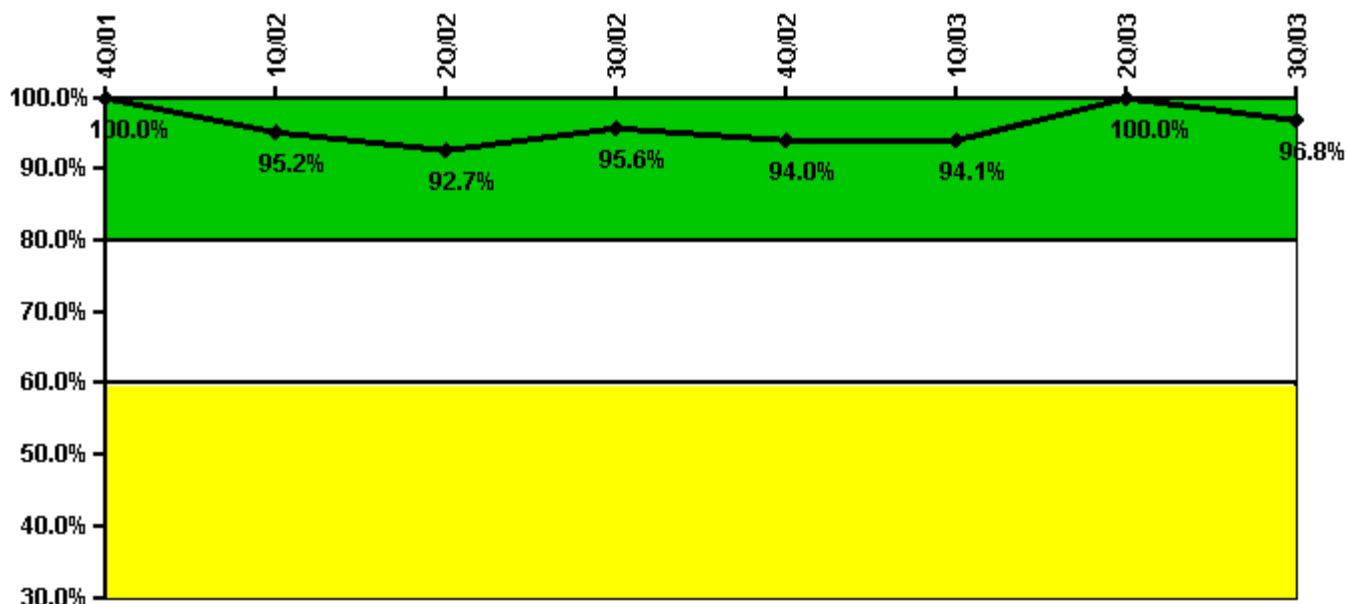
Thresholds: White < 90.0% Yellow < 70.0%

#### Notes

Drill/Exercise Performance	4Q/01	1Q/02	2Q/02	3Q/02	4Q/02	1Q/03	2Q/03	3Q/03
Successful opportunities	6.0	34.0	1.0	23.0	15.0	18.0	57.0	20.0
Total opportunities	6.0	34.0	2.0	24.0	16.0	18.0	58.0	20.0
Indicator value	91.4%	93.3%	93.8%	94.9%	94.7%	94.9%	97.5%	97.8%

Licensee Comments: none

### ERO Drill Participation



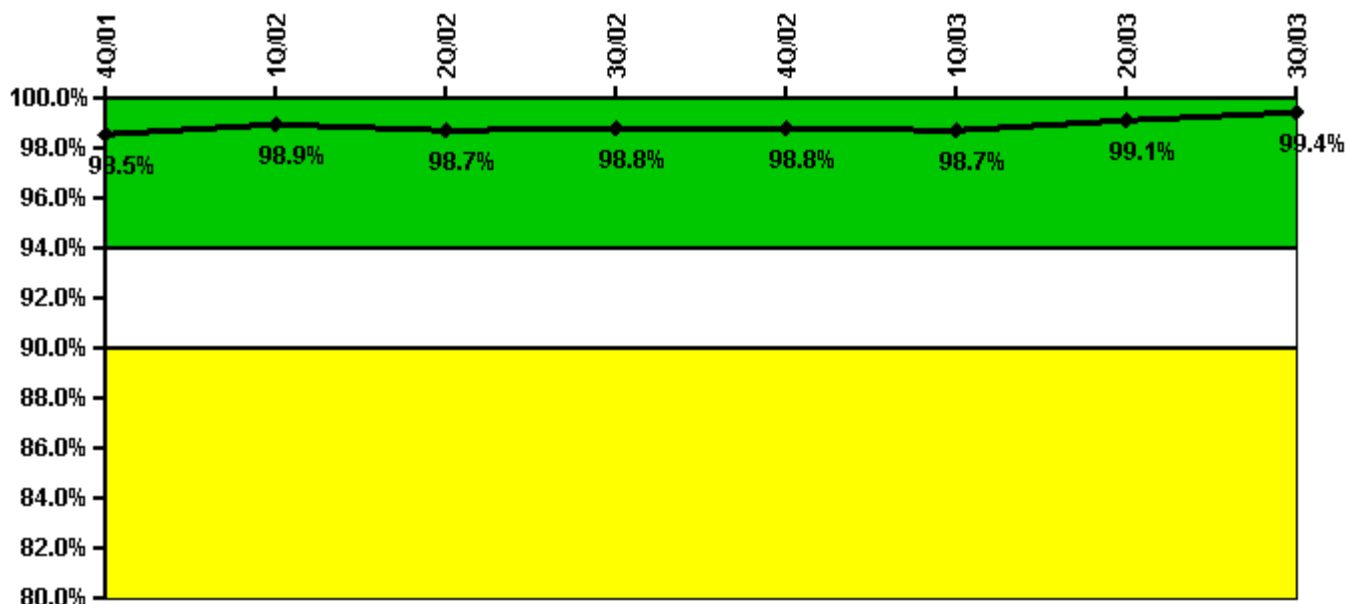
Thresholds: White < 80.0% Yellow < 60.0%

#### Notes

ERO Drill Participation	4Q/01	1Q/02	2Q/02	3Q/02	4Q/02	1Q/03	2Q/03	3Q/03
Participating Key personnel	42.0	40.0	38.0	43.0	47.0	48.0	53.0	60.0
Total Key personnel	42.0	42.0	41.0	45.0	50.0	51.0	53.0	62.0
Indicator value	100.0%	95.2%	92.7%	95.6%	94.0%	94.1%	100.0%	96.8%

Licensee Comments: none

### Alert & Notification System



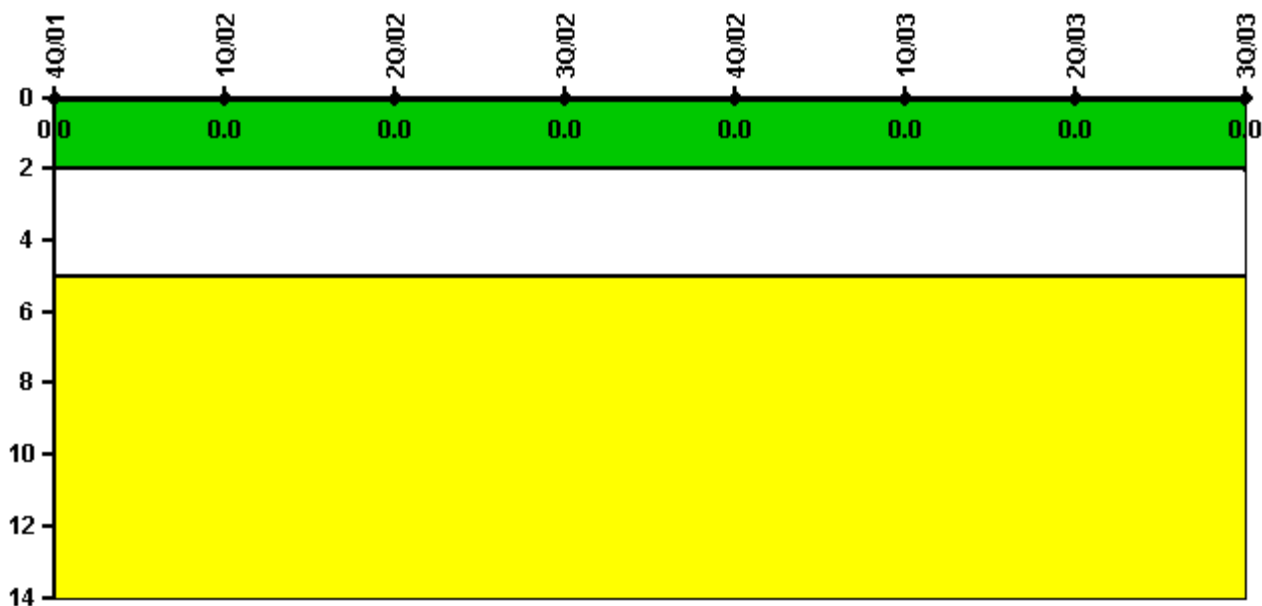
Thresholds: White < 94.0% Yellow < 90.0%

#### Notes

Alert & Notification System	4Q/01	1Q/02	2Q/02	3Q/02	4Q/02	1Q/03	2Q/03	3Q/03
Successful siren-tests	1254	1256	1233	1241	1254	1251	1254	1254
Total sirens-tests	1261	1261	1261	1261	1261	1261	1261	1261
Indicator value	98.5%	98.9%	98.7%	98.8%	98.8%	98.7%	99.1%	99.4%

Licensee Comments: none

### Occupational Exposure Control Effectiveness



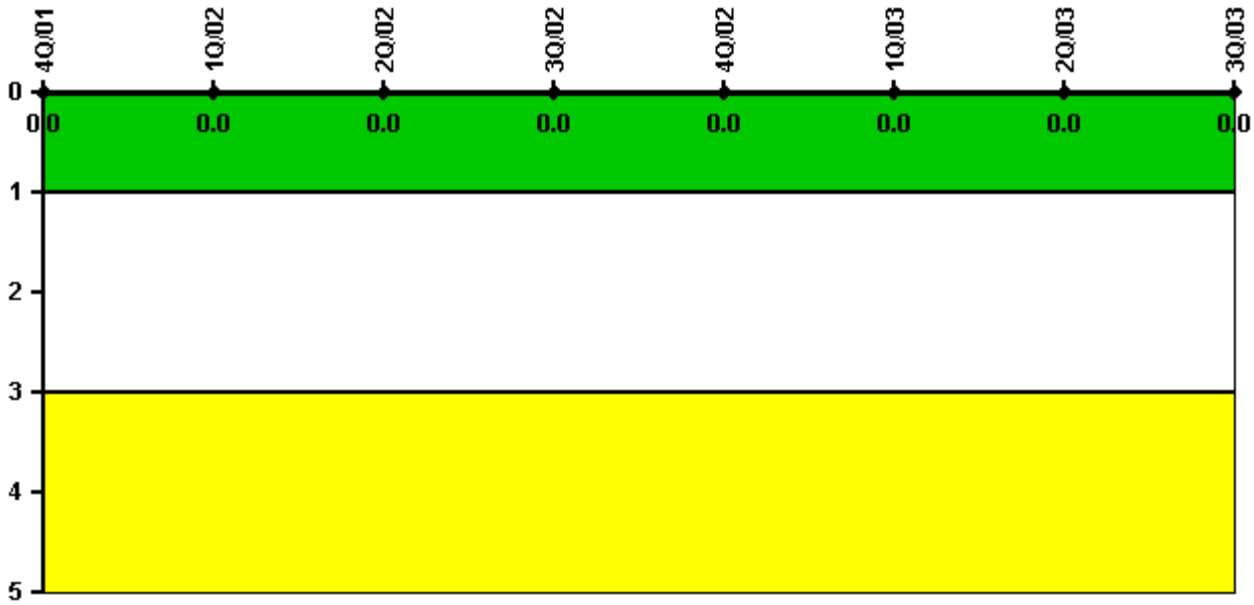
Thresholds: White > 2.0 Yellow > 5.0

#### Notes

Occupational Exposure Control Effectiveness	4Q/01	1Q/02	2Q/02	3Q/02	4Q/02	1Q/03	2Q/03	3Q/03
High radiation area occurrences	0	0	0	0	0	0	0	0
Very high radiation area occurrences	0	0	0	0	0	0	0	0
Unintended exposure occurrences	0	0	0	0	0	0	0	0
Indicator value	0	0	0	0	0	0	0	0

Licensee Comments: none

### RETS/ODCM Radiological Effluent



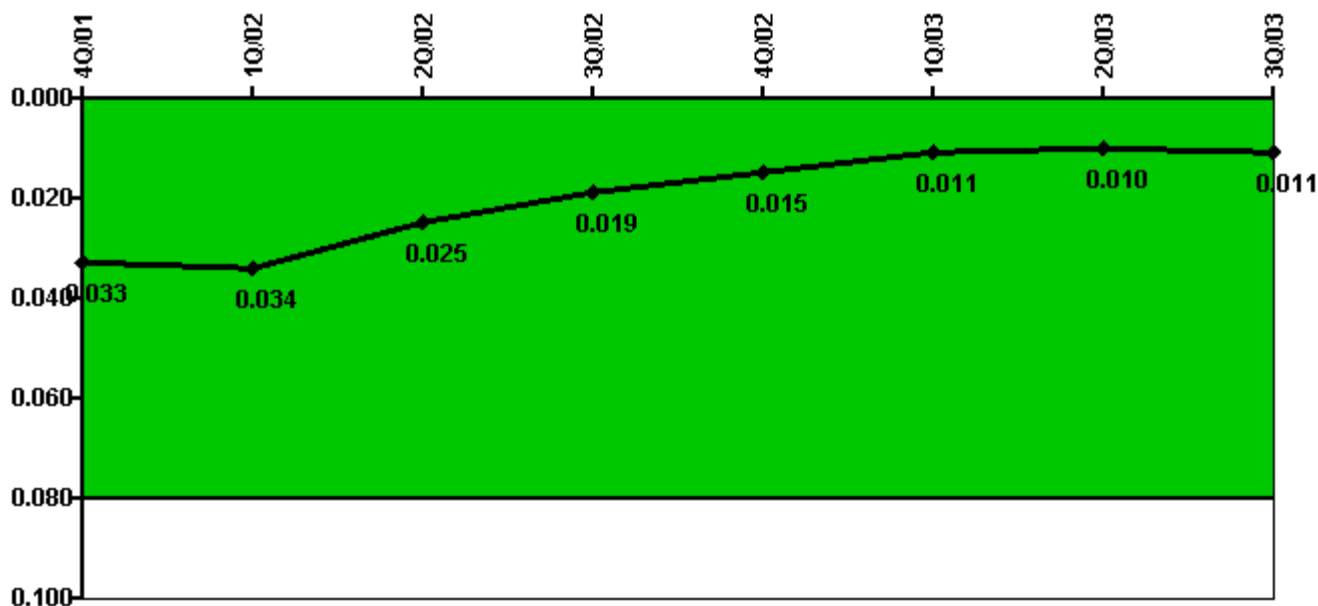
Thresholds: White > 1.0 Yellow > 3.0

#### Notes

RETS/ODCM Radiological Effluent	4Q/01	1Q/02	2Q/02	3Q/02	4Q/02	1Q/03	2Q/03	3Q/03
RETS/ODCM occurrences	0	0	0	0	0	0	0	0
Indicator value	0	0	0	0	0	0	0	0

Licensee Comments: none

### Protected Area Security Performance Index



Thresholds: White > 0.080

#### Notes

Protected Area Security Performance Index	4Q/01	1Q/02	2Q/02	3Q/02	4Q/02	1Q/03	2Q/03	3Q/03
IDS compensatory hours	153.20	179.80	130.60	67.20	55.30	60.50	75.60	123.70
CCTV compensatory hours	20.6	19.5	0.6	22.1	0	2.5	20.7	11.1
IDS normalization factor	1.85	1.85	1.85	1.85	1.85	1.85	1.85	1.85
CCTV normalization factor	1.3	1.3	1.3	1.3	1.3	1.3	1.3	1.3
Index Value	0.033	0.034	0.025	0.019	0.015	0.011	0.010	0.011

Licensee Comments: none



### Personnel Screening Program



Thresholds: White > 2.0 Yellow > 5.0

#### Notes

Personnel Screening Program	4Q/01	1Q/02	2Q/02	3Q/02	4Q/02	1Q/03	2Q/03	3Q/03
Program failures	0	0	0	0	0	0	0	0
Indicator value	0	0	0	0	0	0	0	0

Licensee Comments: none

### FFD/Personnel Reliability



Thresholds: White > 2.0 Yellow > 5.0

#### Notes

FFD/Personnel Reliability	4Q/01	1Q/02	2Q/02	3Q/02	4Q/02	1Q/03	2Q/03	3Q/03
Program Failures	0	0	0	0	0	0	0	0
Indicator value	0	0	0	0	0	0	0	0

Licensee Comments: none

▲ [PI Summary](#) | [Inspection Findings Summary](#) | [Reactor Oversight Process](#)

Last Modified: October 22, 2003