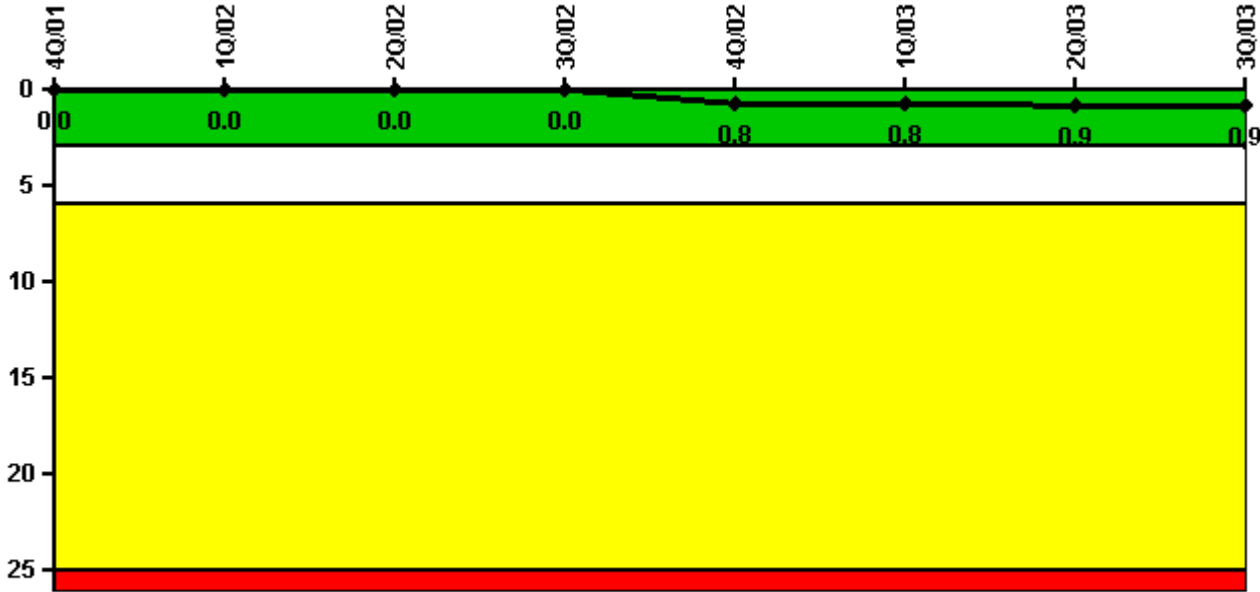


# Ocone3

## 3Q/2003 Performance Indicators

Licensee's General Comments: none

### Unplanned Scrams per 7000 Critical Hrs



Thresholds: White > 3.0 Yellow > 6.0 Red > 25.0

### Notes

Unplanned Scrams per 7000 Critical Hrs	4Q/01	1Q/02	2Q/02	3Q/02	4Q/02	1Q/03	2Q/03	3Q/03
Unplanned scrams	0	0	0	0	1.0	0	0	0
Critical hours	1419.6	2160.0	2183.0	2208.0	2144.1	2160.0	989.7	2208.0
Indicator value	0	0	0	0	0.8	0.8	0.9	0.9

Licensee Comments:

2Q/03: Corrected the hours of critical operation to 386.72. There were no threshold changes attributed to this correction.

### Scrams with Loss of Normal Heat Removal



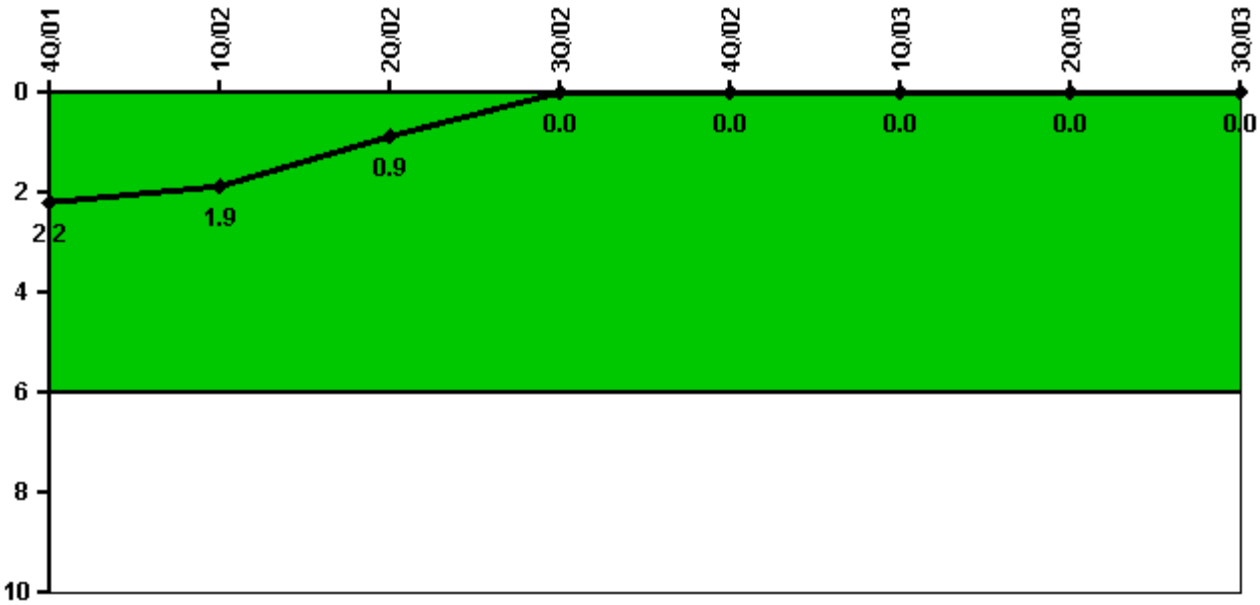
Thresholds: White > 2.0 Yellow > 10.0 Red > 20.0

#### Notes

Scrams with Loss of Normal Heat Removal	4Q/01	1Q/02	2Q/02	3Q/02	4Q/02	1Q/03	2Q/03	3Q/03
Scrams	0	0	0	0	0	0	0	0
Indicator value	0	0	0	0	0	0	0	0

Licensee Comments: none

### Unplanned Power Changes per 7000 Critical Hrs



Thresholds: White > 6.0

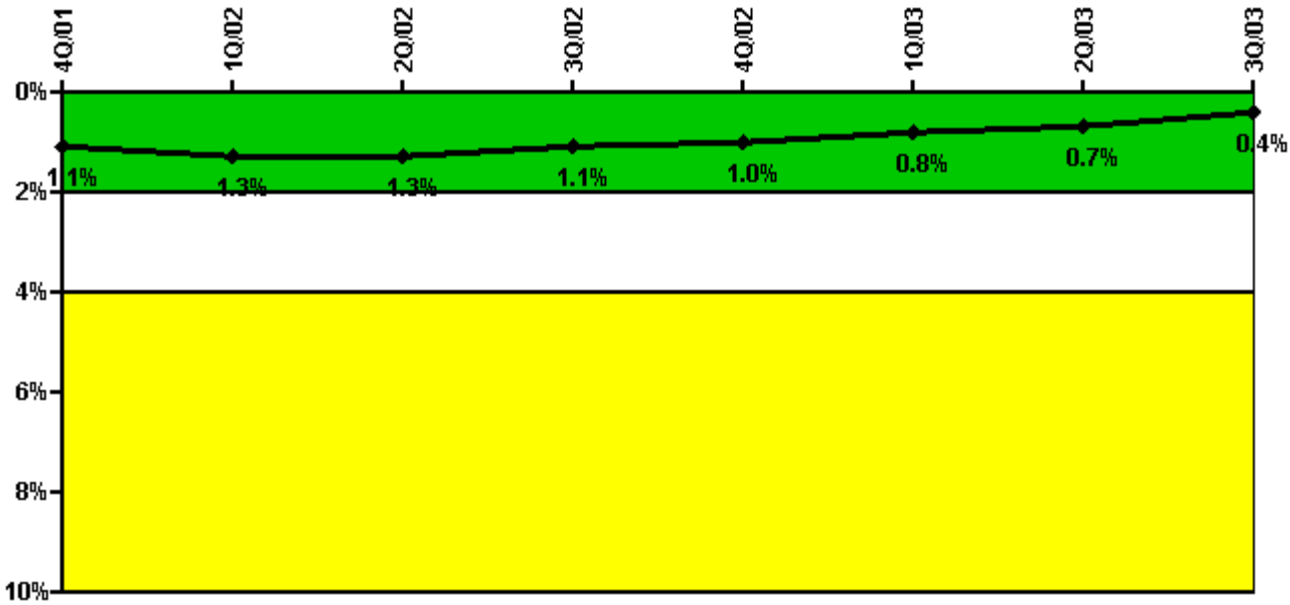
#### Notes

Unplanned Power Changes per 7000 Critical Hrs	4Q/01	1Q/02	2Q/02	3Q/02	4Q/02	1Q/03	2Q/03	3Q/03
Unplanned power changes	0	0	0	0	0	0	0	0
Critical hours	1419.6	2160.0	2183.0	2208.0	2144.1	2160.0	989.7	2208.0
Indicator value	2.2	1.9	0.9	0	0	0	0	0

Licensee Comments:

2Q/03: Corrected the hours of critical operation to 386.72. There were no threshold changes attributed to this correction.

### Safety System Unavailability, Emergency AC Power



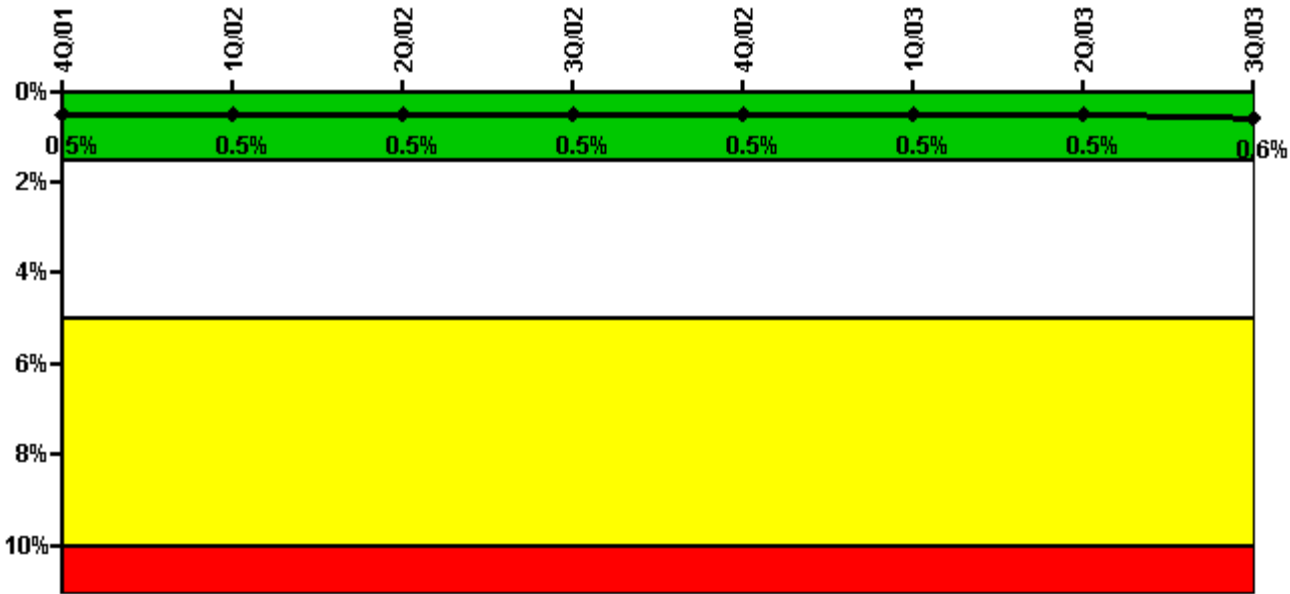
Thresholds: White > 2.0% Yellow > 4.0% Red > 10.0%

#### Notes

Safety System Unavailability, Emergency AC Power	4Q/01	1Q/02	2Q/02	3Q/02	4Q/02	1Q/03	2Q/03	3Q/03
Train 1								
Planned unavailable hours	4.87	86.79	0.73	0	0	10.19	0	0
Unplanned unavailable hours	0	0	0	0	0	0	0	2.08
Fault exposure hours	0	0	0	0	0	0	0	0
Effective Reset hours	0	0	0	0	0	0	0	0
Required hours	2209.00	2160.00	2183.00	2208.00	2209.00	2160.00	2098.75	2208.00
Indicator value	1.1%	1.3%	1.3%	1.1%	1.0%	0.8%	0.7%	0.4%

Licensee Comments: none

### Safety System Unavailability, High Pressure Injection System (HPSI)



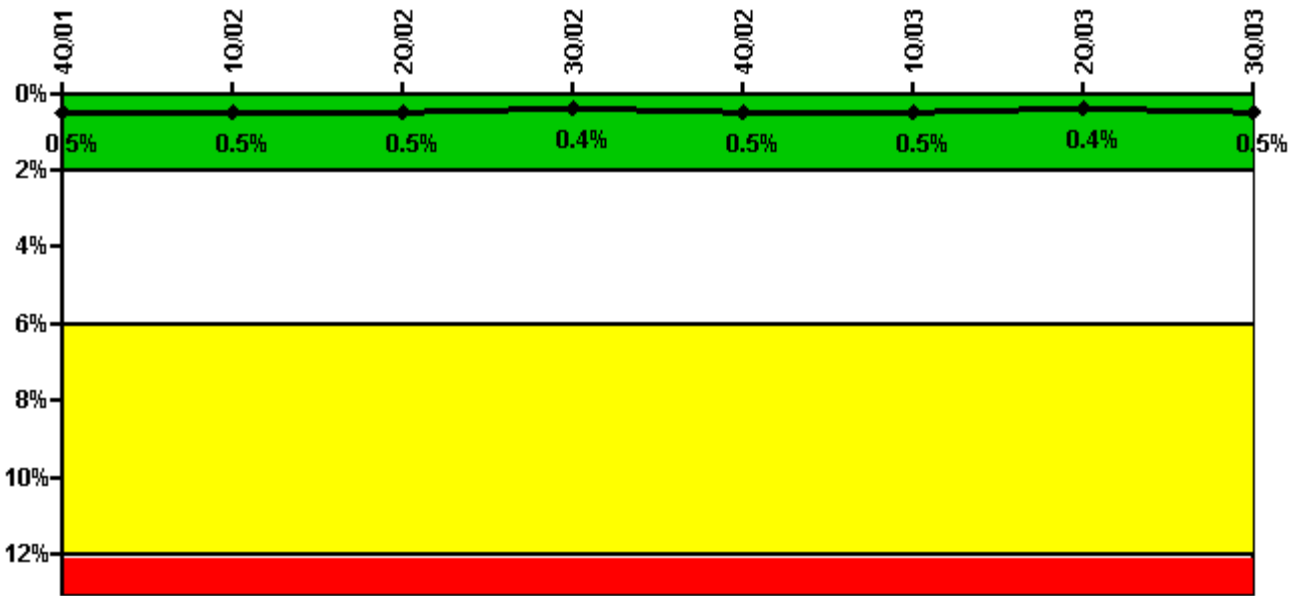
Thresholds: White > 1.5% Yellow > 5.0% Red > 10.0%

**Notes**

Safety System Unavailability, High Pressure Injection System (HPSI)	4Q/01	1Q/02	2Q/02	3Q/02	4Q/02	1Q/03	2Q/03	3Q/03
<b>Train 1</b>								
Planned unavailable hours	4.05	9.60	14.78	3.49	8.09	10.41	15.41	21.93
Unplanned unavailable hours	0	0	0	0.15	0	0	0	0
Fault exposure hours	0	0	0	0	0	0	0	0
Effective Reset hours	0	0	0	0	0	0	0	0
Required hours	1460.75	2160.00	2183.00	2208.00	2209.00	2160.00	1217.50	2208.00
<b>Train 2</b>								
Planned unavailable hours	6.10	12.06	9.07	1.13	0.69	22.60	14.34	18.34
Unplanned unavailable hours	0	0	0	0	0	1.50	0	0
Fault exposure hours	0	0	0	0	0	0	0	0
Effective Reset hours	0	0	0	0	0	0	0	0
Required hours	1460.75	2160.00	2183.00	2208.00	2209.00	2160.00	1217.50	2208.00
Indicator value	0.5%	0.5%	0.5%	0.5%	0.5%	0.5%	0.5%	0.6%

Licensee Comments: none

### Safety System Unavailability, Heat Removal System (AFW)



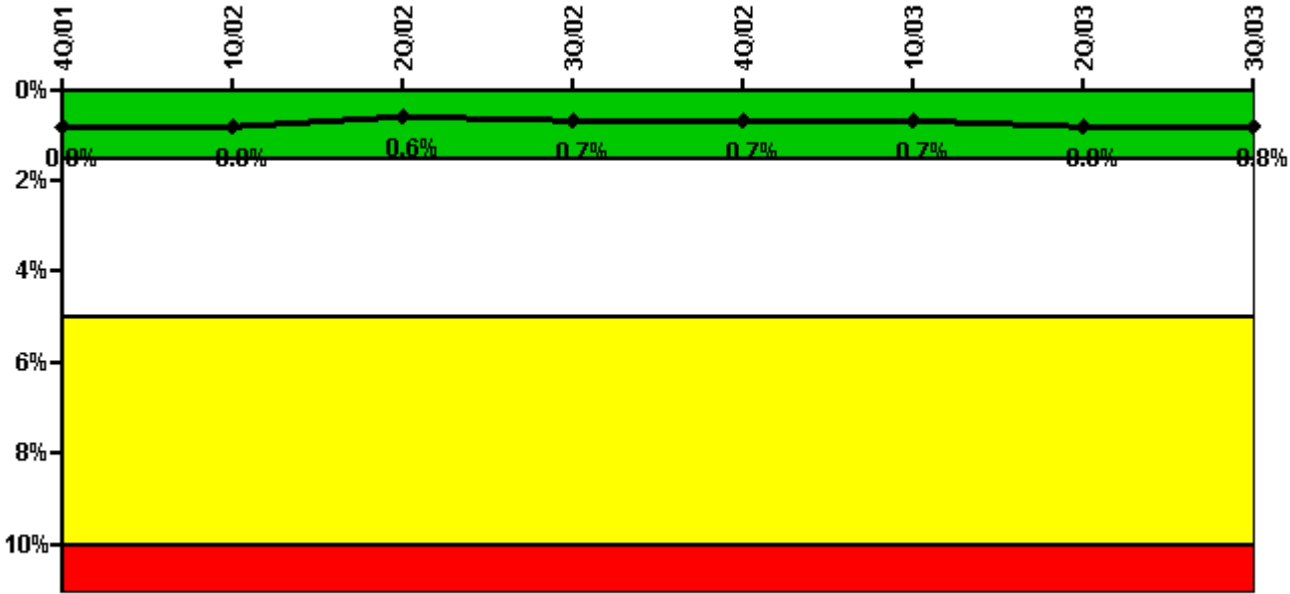
Thresholds: White > 2.0% Yellow > 6.0% Red > 12.0%

#### Notes

Safety System Unavailability, Heat Removal System (AFW)	4Q/01	1Q/02	2Q/02	3Q/02	4Q/02	1Q/03	2Q/03	3Q/03
<b>Train 1</b>								
Planned unavailable hours	18.20	8.90	2.66	0	11.71	15.30	0.40	20.30
Unplanned unavailable hours	0	0	0	0	0	0	0	0
Fault exposure hours	0	0	0	0	0	0	0	0
Effective Reset hours	0	0	0	0	0	0	0	0
Required hours	1499.10	2160.00	2183.00	2208.00	2209.00	2160.00	1120.00	2208.00
<b>Train 2</b>								
Planned unavailable hours	9.10	11.30	1.66	0	9.60	22.00	0.50	12.00
Unplanned unavailable hours	0	0	0	0	27.10	0	0	0
Fault exposure hours	0	0	0	0	0	0	0	0
Effective Reset hours	0	0	0	0	0	0	0	0
Required hours	1499.10	2160.00	2183.00	2208.00	2209.00	2160.00	1120.00	2208.00
<b>Train 3</b>								
Planned unavailable hours	16.75	2.20	5.30	0	2.80	10.20	3.70	4.10
Unplanned unavailable hours	0	0	0	0	0	0	0	0
Fault exposure hours	0	0	0	0	0	0	0	0
Effective Reset hours	0	0	0	0	0	0	0	0
Required hours	1499.10	2160.00	2183.00	2208.00	2209.00	2160.00	1120.00	2208.00
Indicator value	0.5%	0.5%	0.5%	0.4%	0.5%	0.5%	0.4%	0.5%

Licensee Comments: none

### Safety System Unavailability, Residual Heat Removal System



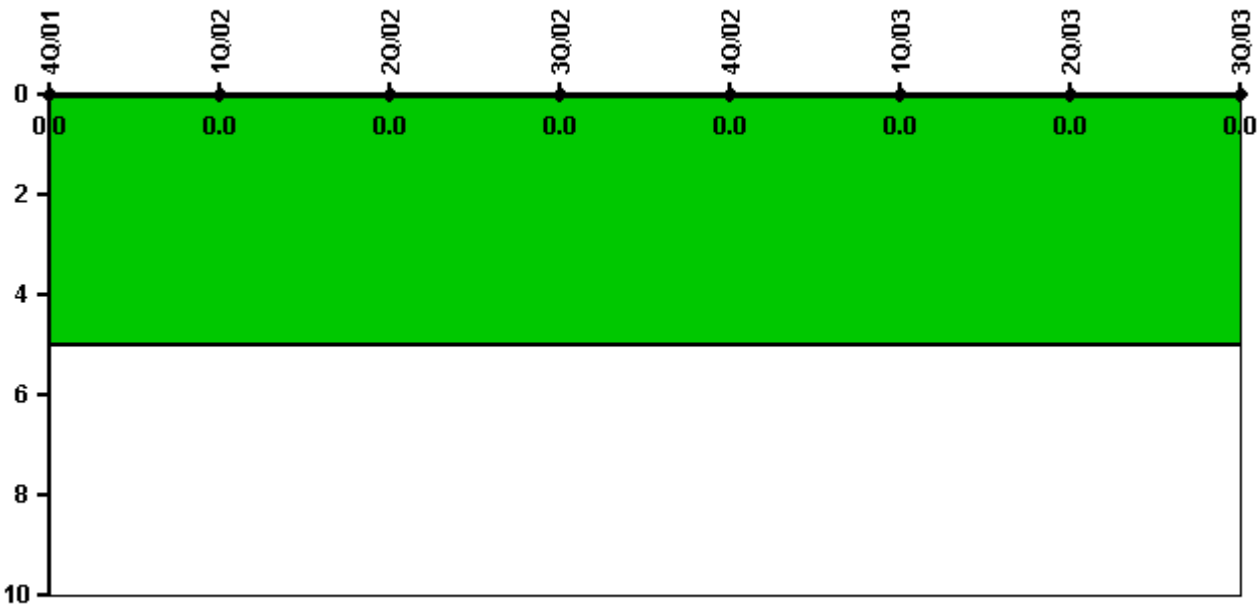
Thresholds: White > 1.5% Yellow > 5.0% Red > 10.0%

**Notes**

Safety System Unavailability, Residual Heat Removal System	4Q/01	1Q/02	2Q/02	3Q/02	4Q/02	1Q/03	2Q/03	3Q/03
<b>Train 1</b>								
Planned unavailable hours	14.90	19.60	1.30	16.70	29.20	34.30	26.78	24.69
Unplanned unavailable hours	0	0	0	0	0	0	0	0
Fault exposure hours	0	0	0	0	0	0	0	0
Effective Reset hours	0	0	0	0	0	0	0	0
Required hours	2209.00	2160.00	2183.00	2208.00	2209.00	2160.00	1439.00	2208.00
<b>Train 2</b>								
Planned unavailable hours	15.70	18.40	6.30	23.70	10.00	56.10	36.12	11.35
Unplanned unavailable hours	0	0	5.20	0	0	0	0	0
Fault exposure hours	0	0	0	0	0	0	0	0
Effective Reset hours	0	0	0	0	0	0	0	0
Required hours	2209.00	2160.00	2183.00	2208.00	2209.00	2160.00	1439.00	2208.00
Indicator value	0.8%	0.8%	0.6%	0.7%	0.7%	0.7%	0.8%	0.8%

Licensee Comments: none

### Safety System Functional Failures (PWR)



Thresholds: White > 5.0

#### Notes

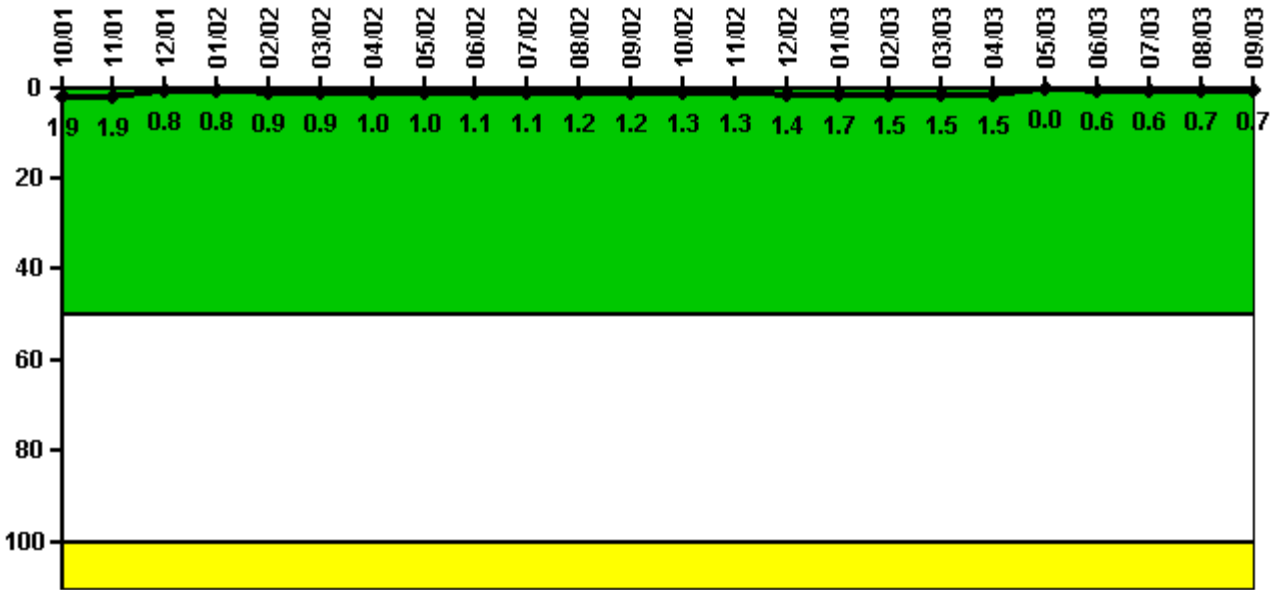
Safety System Functional Failures (PWR)	4Q/01	1Q/02	2Q/02	3Q/02	4Q/02	1Q/03	2Q/03	3Q/03
Safety System Functional Failures	0	0	0	0	0	0	0	0
Indicator value	0	0	0	0	0	0	0	0

Licensee Comments:

3Q/02: The LER 269/2002-04, (EOP guidance for post-LOCA boron dilution) previously reported, is not a reportable condition.



### Reactor Coolant System Activity



Thresholds: White > 50.0 Yellow > 100.0

**Notes**

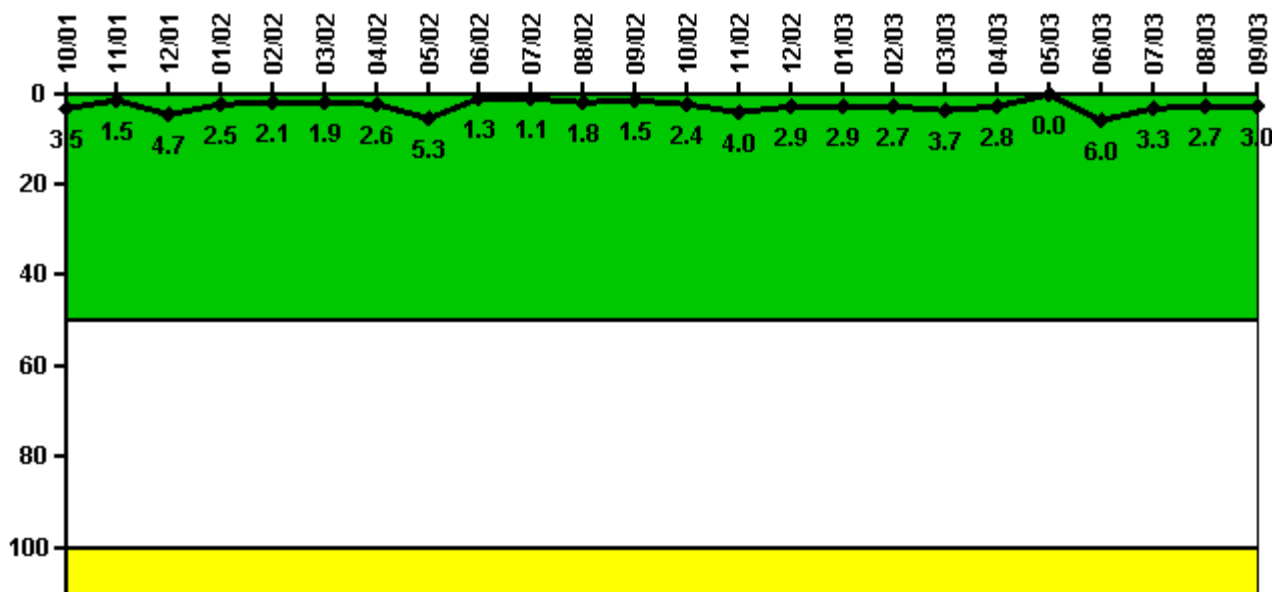
Reactor Coolant System Activity	10/01	11/01	12/01	1/02	2/02	3/02	4/02	5/02	6/02	7/02	8/02	9/02
Maximum activity	0.018900	0.018900	0.007600	0.008300	0.008600	0.009000	0.009700	0.010300	0.010700	0.011000	0.011800	0.012300
Technical specification limit	1.0	1.0	1.0	1.0	1.0	1.0	1.0	1.0	1.0	1.0	1.0	1.0
Indicator value	1.9	1.9	0.8	0.8	0.9	0.9	1.0	1.0	1.1	1.1	1.2	1.2

Reactor Coolant System Activity	10/02	11/02	12/02	1/03	2/03	3/03	4/03	5/03	6/03	7/03	8/03	9/03
Maximum activity	0.012900	0.013200	0.014200	0.016900	0.014600	0.014900	0.014500	0	0.005500	0.005900	0.006500	0.007000
Technical specification limit	1.0	1.0	1.0	1.0	1.0	1.0	1.0	1.0	1.0	1.0	1.0	1.0
Indicator value	1.3	1.3	1.4	1.7	1.5	1.5	1.5	0	0.6	0.6	0.7	0.7

Licensee Comments: none

### Reactor Coolant System Leakage



Thresholds: White > 50.0 Yellow > 100.0

#### Notes

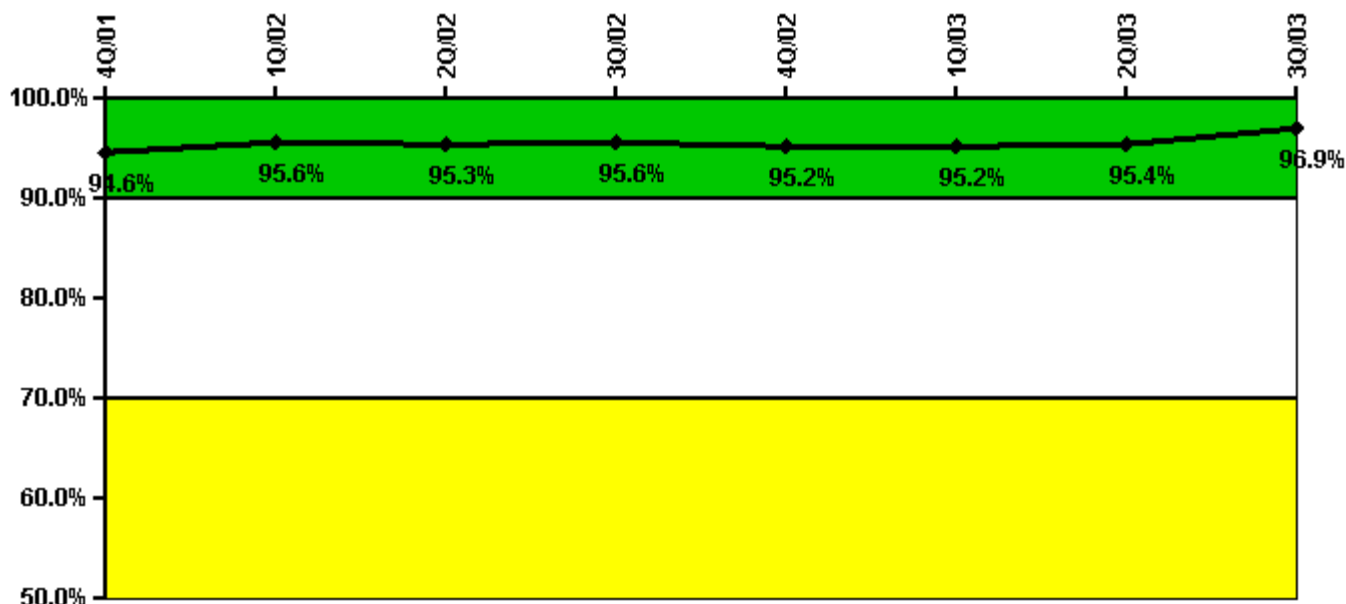
Reactor Coolant System Leakage	10/01	11/01	12/01	1/02	2/02	3/02	4/02	5/02	6/02	7/02	8/02	9/02
Maximum leakage	0.350	0.150	0.470	0.250	0.210	0.190	0.260	0.530	0.130	0.110	0.180	0.150
Technical specification limit	10.0	10.0	10.0	10.0	10.0	10.0	10.0	10.0	10.0	10.0	10.0	10.0
Indicator value	3.5	1.5	4.7	2.5	2.1	1.9	2.6	5.3	1.3	1.1	1.8	1.5

Reactor Coolant System Leakage	10/02	11/02	12/02	1/03	2/03	3/03	4/03	5/03	6/03	7/03	8/03	9/03
Maximum leakage	0.240	0.400	0.290	0.290	0.270	0.370	0.280	0	0.600	0.330	0.270	0.299
Technical specification limit	10.0	10.0	10.0	10.0	10.0	10.0	10.0	10.0	10.0	10.0	10.0	10.0
Indicator value	2.4	4.0	2.9	2.9	2.7	3.7	2.8	0	6.0	3.3	2.7	3.0

Licensee Comments: none

### Drill/Exercise Performance



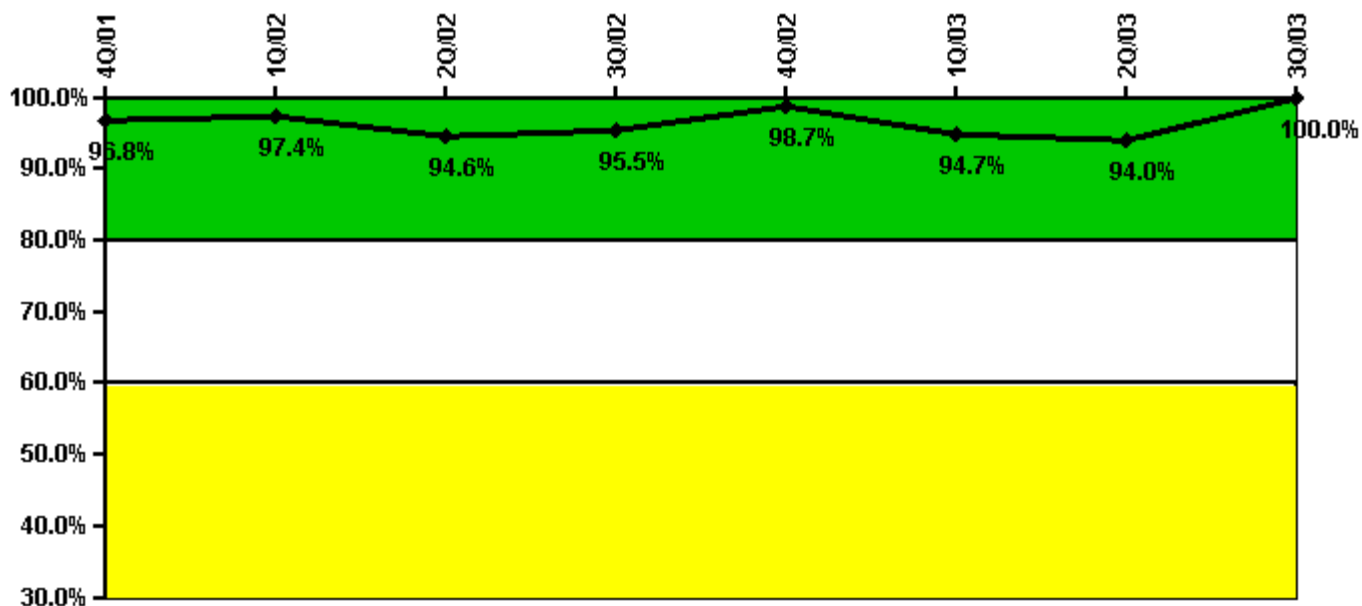
Thresholds: White < 90.0% Yellow < 70.0%

#### Notes

Drill/Exercise Performance	4Q/01	1Q/02	2Q/02	3Q/02	4Q/02	1Q/03	2Q/03	3Q/03
Successful opportunities	9.0	12.0	32.0	55.0	16.0	22.0	13.0	57.0
Total opportunities	10.0	12.0	34.0	56.0	17.0	22.0	14.0	58.0
Indicator value	94.6%	95.6%	95.3%	95.6%	95.2%	95.2%	95.4%	96.9%

Licensee Comments: none

### ERO Drill Participation



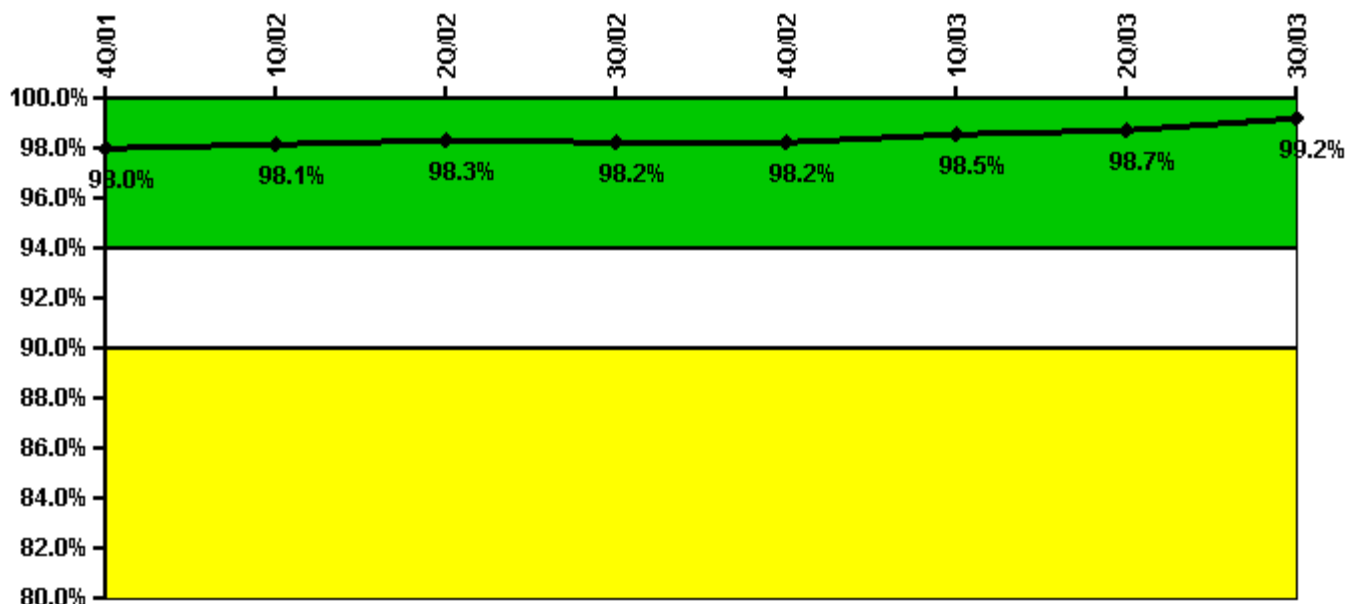
Thresholds: White < 80.0% Yellow < 60.0%

#### Notes

ERO Drill Participation	4Q/01	1Q/02	2Q/02	3Q/02	4Q/02	1Q/03	2Q/03	3Q/03
Participating Key personnel	150.0	149.0	141.0	149.0	151.0	142.0	141.0	151.0
Total Key personnel	155.0	153.0	149.0	156.0	153.0	150.0	150.0	151.0
Indicator value	96.8%	97.4%	94.6%	95.5%	98.7%	94.7%	94.0%	100.0%

Licensee Comments: none

### Alert & Notification System



Thresholds: White < 94.0% Yellow < 90.0%

#### Notes

Alert & Notification System	4Q/01	1Q/02	2Q/02	3Q/02	4Q/02	1Q/03	2Q/03	3Q/03
Successful siren-tests	1154	1031	1092	1092	1142	1291	1481	1358
Total sirens-tests	1172	1046	1111	1121	1157	1300	1495	1365
Indicator value	98.0%	98.1%	98.3%	98.2%	98.2%	98.5%	98.7%	99.2%

Licensee Comments: none

### Occupational Exposure Control Effectiveness



Thresholds: White > 2.0 Yellow > 5.0

#### Notes

Occupational Exposure Control Effectiveness	4Q/01	1Q/02	2Q/02	3Q/02	4Q/02	1Q/03	2Q/03	3Q/03
High radiation area occurrences	0	0	0	0	0	0	0	0
Very high radiation area occurrences	0	0	0	0	0	0	0	0
Unintended exposure occurrences	0	0	0	0	0	0	0	0
Indicator value	0	0	0	0	0	0	0	0

Licensee Comments: none

### RETS/ODCM Radiological Effluent



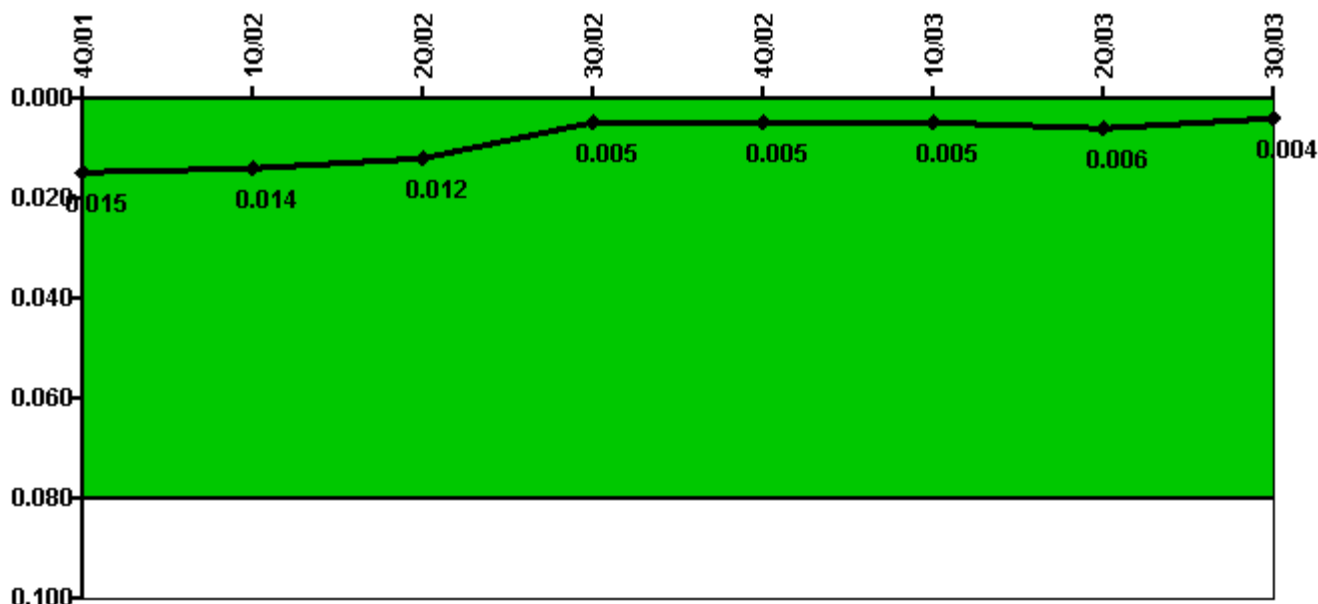
Thresholds: White > 1.0 Yellow > 3.0

#### Notes

RETS/ODCM Radiological Effluent	4Q/01	1Q/02	2Q/02	3Q/02	4Q/02	1Q/03	2Q/03	3Q/03
RETS/ODCM occurrences	0	0	0	0	0	0	0	0
Indicator value	0	0	0	0	0	0	0	0

Licensee Comments: none

### Protected Area Security Performance Index



Thresholds: White > 0.080

#### Notes

Protected Area Security Performance Index	4Q/01	1Q/02	2Q/02	3Q/02	4Q/02	1Q/03	2Q/03	3Q/03
IDS compensatory hours	30.00	26.00	47.00	96.00	31.00	20.00	54.00	22.00
CCTV compensatory hours	0	0	0	9.0	6.0	3.0	12.0	0
IDS normalization factor	2.80	2.80	2.80	2.80	2.80	2.80	2.80	2.80
CCTV normalization factor	1.0	1.0	1.0	1.0	1.0	1.0	1.0	1.0
Index Value	0.015	0.014	0.012	0.005	0.005	0.005	0.006	0.004

Licensee Comments: none



### Personnel Screening Program



Thresholds: White > 2.0 Yellow > 5.0

#### Notes

Personnel Screening Program	4Q/01	1Q/02	2Q/02	3Q/02	4Q/02	1Q/03	2Q/03	3Q/03
Program failures	0	0	0	0	0	0	0	0
Indicator value	0	0	0	0	0	0	0	0

Licensee Comments: none

### FFD/Personnel Reliability



Thresholds: White > 2.0 Yellow > 5.0

#### Notes

FFD/Personnel Reliability	4Q/01	1Q/02	2Q/02	3Q/02	4Q/02	1Q/03	2Q/03	3Q/03
Program Failures	0	0	0	0	0	0	0	0
Indicator value	0	0	0	0	0	0	0	0

Licensee Comments: none

▲ [PI Summary](#) | [Inspection Findings Summary](#) | [Reactor Oversight Process](#)

Last Modified: October 22, 2003