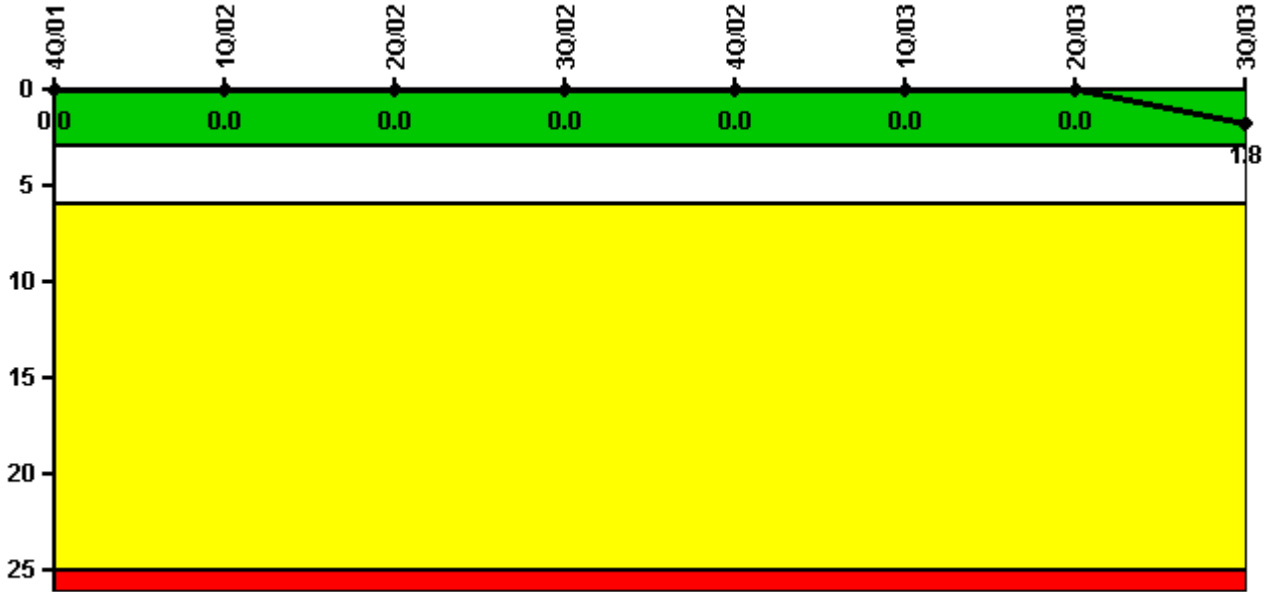


Oyster Creek

3Q/2003 Performance Indicators

Licensee's General Comments: none

Unplanned Scrams per 7000 Critical Hrs



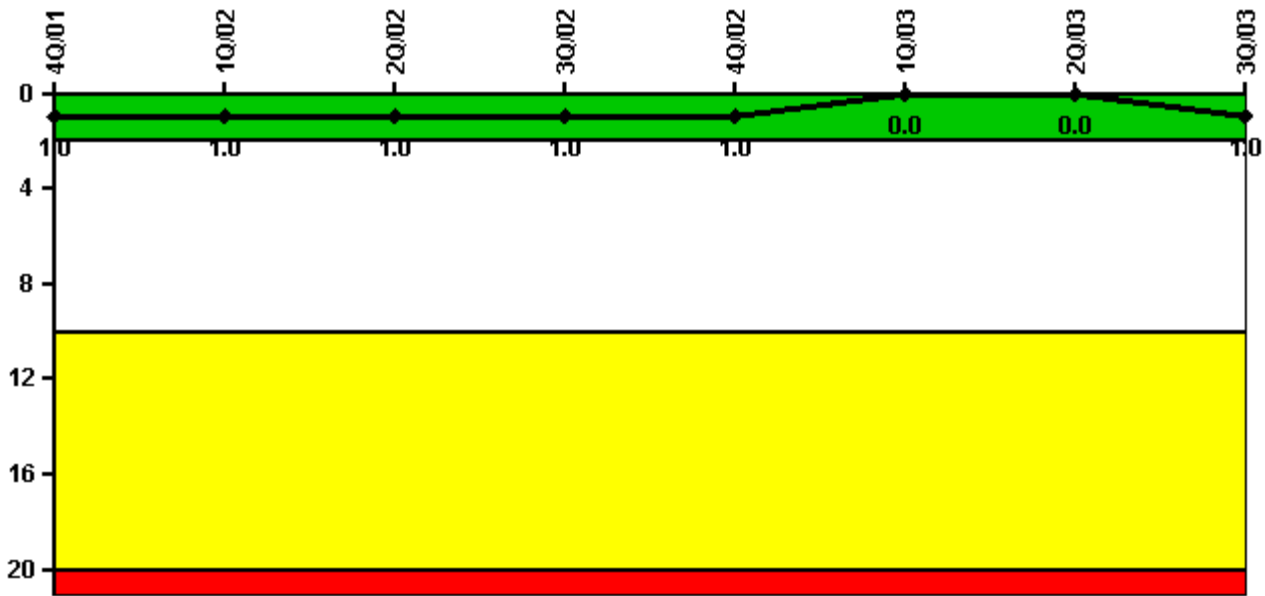
Thresholds: White > 3.0 Yellow > 6.0 Red > 25.0

Notes

Unplanned Scrams per 7000 Critical Hrs	4Q/01	1Q/02	2Q/02	3Q/02	4Q/02	1Q/03	2Q/03	3Q/03
Unplanned scrams	0	0	0	0	0	0	0	2.0
Critical hours	2048.7	2160.0	2183.0	2208.0	1683.0	2160.0	2028.1	2118.8
Indicator value	0	0	0	0	0	0	0	1.8

Licensee Comments: none

Scrams with Loss of Normal Heat Removal



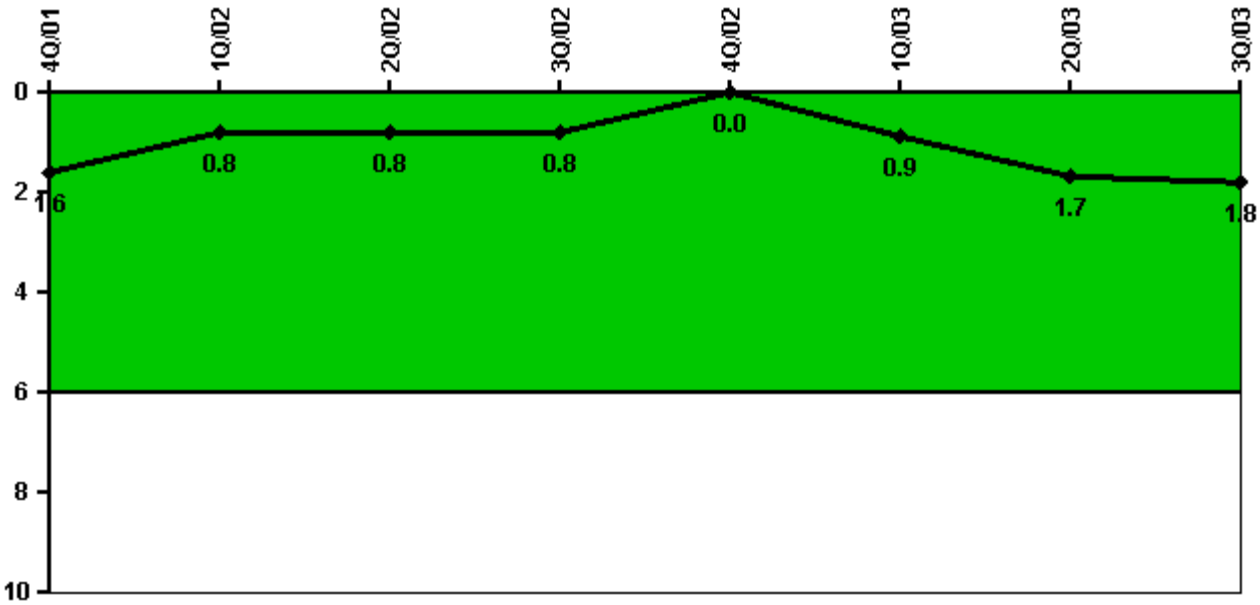
Thresholds: White > 2.0 Yellow > 10.0 Red > 20.0

Notes

Scrams with Loss of Normal Heat Removal	4Q/01	1Q/02	2Q/02	3Q/02	4Q/02	1Q/03	2Q/03	3Q/03
Scrams	0	0	0	0	0	0	0	1.0
Indicator value	1.0	1.0	1.0	1.0	1.0	0	0	1.0

Licensee Comments: none

Unplanned Power Changes per 7000 Critical Hrs



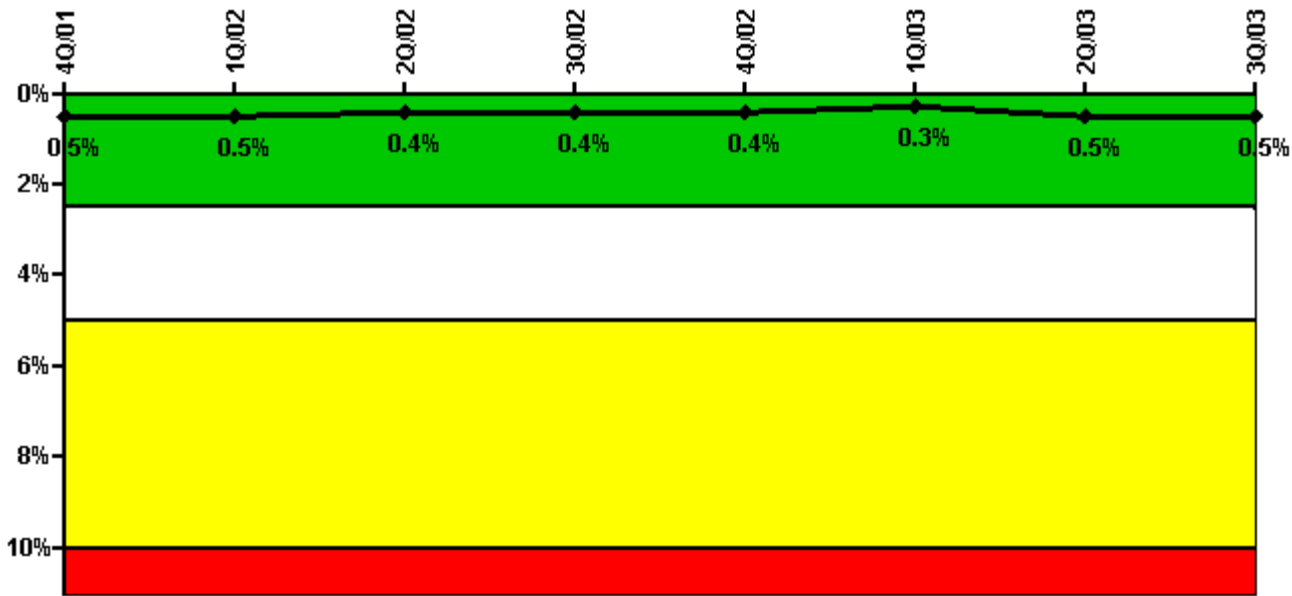
Thresholds: White > 6.0

Notes

Unplanned Power Changes per 7000 Critical Hrs	4Q/01	1Q/02	2Q/02	3Q/02	4Q/02	1Q/03	2Q/03	3Q/03
Unplanned power changes	1.0	0	0	0	0	1.0	1.0	0
Critical hours	2048.7	2160.0	2183.0	2208.0	1683.0	2160.0	2028.1	2118.8
Indicator value	1.6	0.8	0.8	0.8	0	0.9	1.7	1.8

Licensee Comments: none

Safety System Unavailability, Emergency AC Power



Thresholds: White > 2.5% Yellow > 5.0% Red > 10.0%

Notes

Safety System Unavailability, Emergency AC Power	4Q/01	1Q/02	2Q/02	3Q/02	4Q/02	1Q/03	2Q/03	3Q/03
Train 1								
Planned unavailable hours	12.57	0	0	4.97	0	10.30	16.13	0
Unplanned unavailable hours	0	0	0	0	0	0	30.68	0
Fault exposure hours	0	0	0	0	0	0	0	0
Effective Reset hours	0	0	0	0	0	0	0	0
Required hours	2209.00	2160.00	2183.00	2208.00	2209.00	2160.00	2183.00	2208.00
Train 2								
Planned unavailable hours	0	7.52	4.90	0	10.67	0	19.60	0
Unplanned unavailable hours	0	0	0	13.05	0	0	0	0
Fault exposure hours	0	0	0	0	0	0	0	0
Effective Reset hours	0	0	0	0	0	0	0	0
Required hours	2209.00	2160.00	2183.00	2208.00	2209.00	2160.00	2183.00	2208.00
Indicator value	0.5%	0.5%	0.4%	0.4%	0.4%	0.3%	0.5%	0.5%

Licensee Comments: none

Safety System Unavailability, High Pressure Injection System

**Not applicable due to
unique design
characteristics.
Performance in this area
will be assessed through
focused NRC inspection
efforts.**

Notes

Safety System Unavailability, High Pressure Injection System	4Q/01	1Q/02	2Q/02	3Q/02	4Q/02	1Q/03	2Q/03	3Q/03
Train 1								
Planned unavailable hours	10.90	10.80	11.20	10.40	14.80	27.20	41.90	8.20
Unplanned unavailable hours	0	0	0	0	0	0	0	0
Fault exposure hours	0	0	0	0	0	0	0	0
Effective Reset hours	0	0	0	0	0	0	0	0
Required hours	2065.00	2160.00	2183.00	2208.00	1783.40	2160.00	2043.00	2147.30
Train 2								
Planned unavailable hours	12.30	9.60	8.60	5.40	8.10	14.20	15.00	10.40
Unplanned unavailable hours	0	0	0	0	0	0	0	0
Fault exposure hours	0	0	0	0	0	0	0	0
Effective Reset hours	0	0	0	0	0	0	0	0
Required hours	2065.00	2160.00	2183.00	2208.00	1783.40	2160.00	2043.00	2147.30
Indicator value	0.9%	1.0%	1.0%	1.0%	0.9%	0.7%	0.7%	0.6%

Licensee Comments:

3Q/03: Reactor was in cold shutdown from 8/15/2003 2:38 AM until 8/16/2003 3:30 AM, and from 8/22/2003 12:05 PM until 8/23/2003 11:51PM.

Safety System Unavailability, Heat Removal System

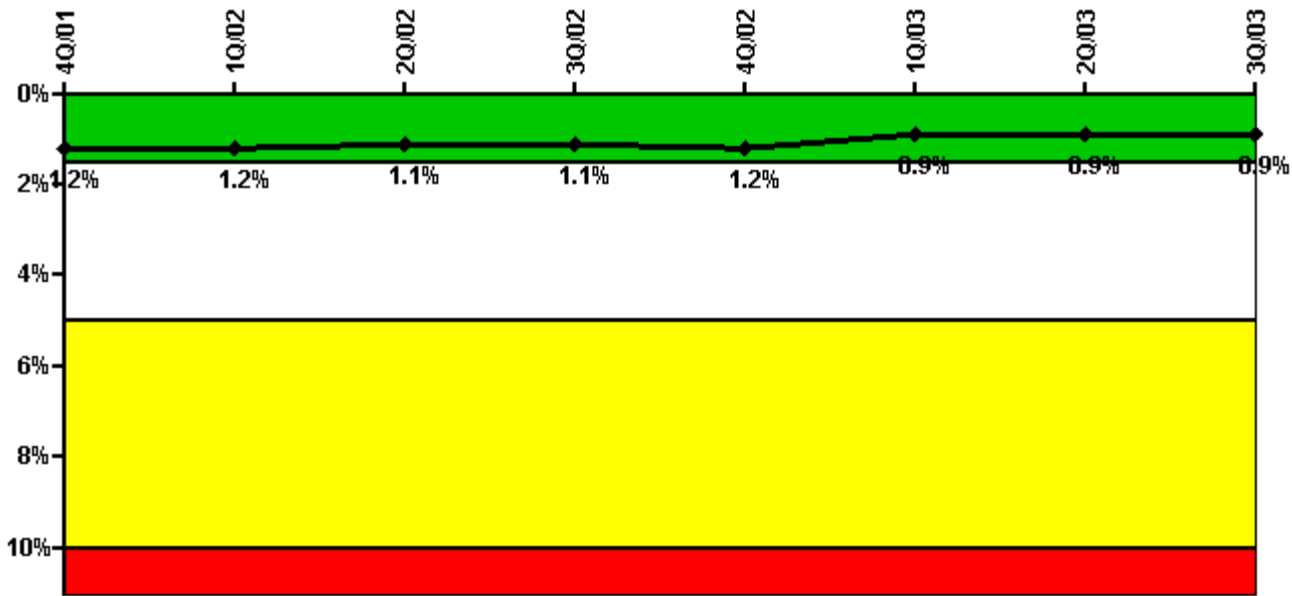
**Thresholds
under
development /
review**

Notes

Safety System Unavailability, Heat Removal System	4Q/01	1Q/02	2Q/02	3Q/02	4Q/02	1Q/03	2Q/03	3Q/03
Train 1								
Planned unavailable hours								
Unplanned unavailable hours								
Fault exposure hours								
Effective Reset hours	0	0	0	0	0	0	0	0
Required hours								
Train 2								
Planned unavailable hours								
Unplanned unavailable hours								
Fault exposure hours								
Effective Reset hours	0	0	0	0	0	0	0	0
Required hours								
Indicator value								

Licensee Comments: none

Safety System Unavailability, Residual Heat Removal System



Thresholds: White > 1.5% Yellow > 5.0% Red > 10.0%

Notes

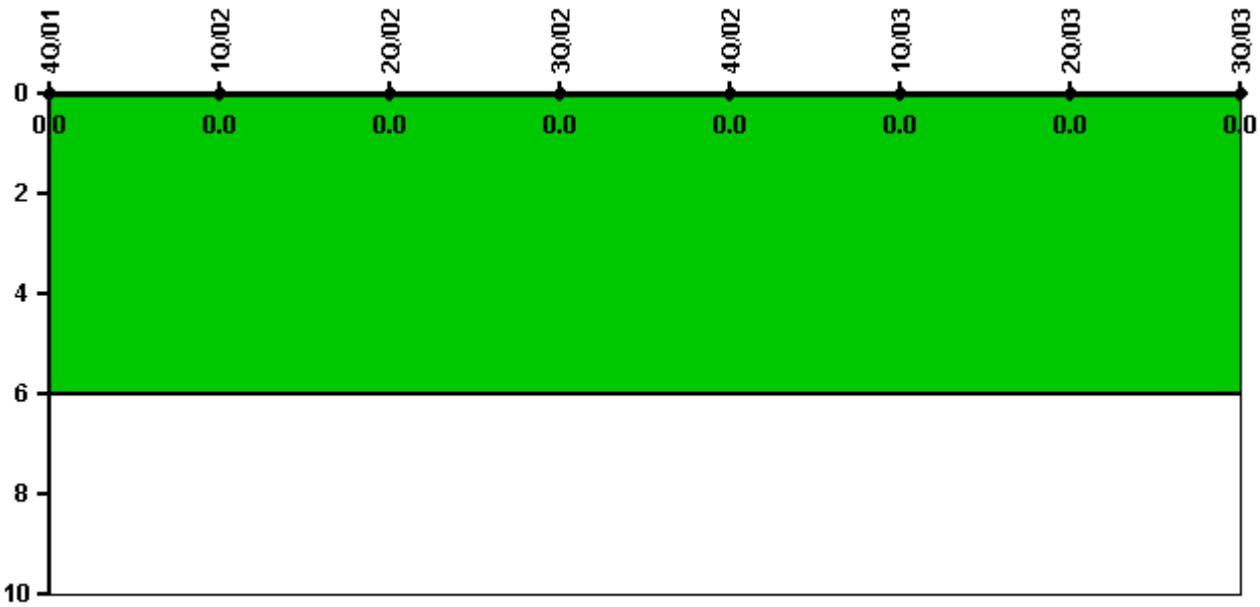
Safety System Unavailability, Residual Heat Removal System	4Q/01	1Q/02	2Q/02	3Q/02	4Q/02	1Q/03	2Q/03	3Q/03
Train 1								
Planned unavailable hours	0	7.20	0	32.00	3.70	0	0	0
Unplanned unavailable hours	0	0	0	0	0	0	10.90	1.30
Fault exposure hours	0	0	0	0	0	0	0	0
Effective Reset hours	0	0	0	0	0	0	0	0
Required hours	2209.00	2160.00	2183.00	2208.00	2209.00	2160.00	2183.00	2208.00
Train 2								
Planned unavailable hours	8.40	11.40	4.40	0	24.60	0	0	9.90
Unplanned unavailable hours	15.90	15.80	0	0	0	0	0	0
Fault exposure hours	0	0	0	0	0	0	0	0
Effective Reset hours	0	0	0	0	0	0	0	0
Required hours	2209.00	2160.00	2183.00	2208.00	2209.00	2160.00	2183.00	2208.00
Train 3								
Planned unavailable hours	5.00	0	10.40	0	153.40	0	0	0
Unplanned unavailable hours	15.90	0	0	0	0	0	0	0
Fault exposure hours	0	0	0	0	0	0	0	0
Effective Reset hours	0	0	0	0	0	0	0	0
Required hours	2209.00	2160.00	2183.00	2208.00	2209.00	2160.00	2183.00	2208.00
Train 4								
Planned unavailable hours	2.70	5.00	2.90	33.40	16.10	0	0	10.20
Unplanned unavailable hours	0	0	0	0	0	0	18.70	1.30
Fault exposure hours	0	0	0	0	0	0	0	0
Effective Reset hours	0	0	0	0	0	0	0	0
Required hours	2065.00	2160.00	2183.00	2208.00	1745.80	2160.00	2043.00	2147.30

Train 5								
Planned unavailable hours	2.30	39.60	3.40	0	1.00	0	0	1.90
Unplanned unavailable hours	28.00	4.00	0	0	0	0	0	4.30
Fault exposure hours	0	0	0	0	0	0	0	0
Effective Reset hours	0	0	0	0	0	0	0	0
Required hours	2065.00	2160.00	2183.00	2208.00	1745.80	2160.00	2043.00	2147.30
Indicator value	1.2%	1.2%	1.1%	1.1%	1.2%	0.9%	0.9%	0.9%

Licensee Comments:

3Q/03: Reactor was in cold shutdown from 8/15/2003 2:38 AM until 8/16/2003 3:30 AM, and from 8/22/2003 12:05 PM until 8/23/2003 11:51PM.

Safety System Functional Failures (BWR)



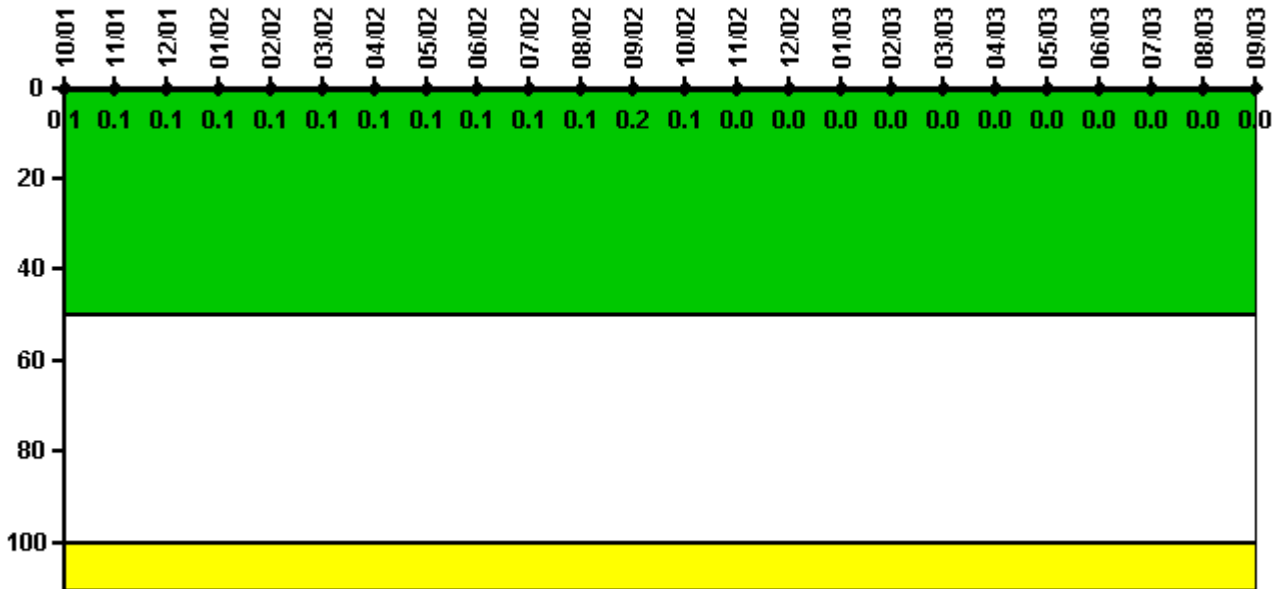
Thresholds: White > 6.0

Notes

Safety System Functional Failures (BWR)	4Q/01	1Q/02	2Q/02	3Q/02	4Q/02	1Q/03	2Q/03	3Q/03
Safety System Functional Failures	0	0	0	0	0	0	0	0
Indicator value	0	0	0	0	0	0	0	0

Licensee Comments: none

Reactor Coolant System Activity



Thresholds: White > 50.0 Yellow > 100.0

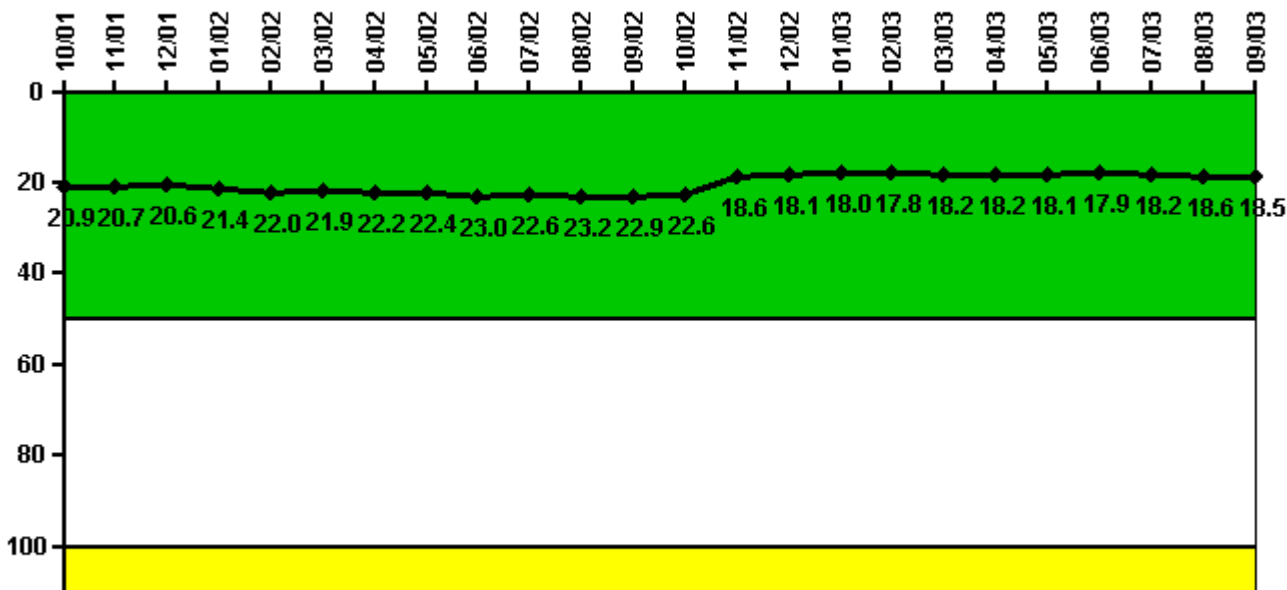
Notes

Reactor Coolant System Activity	10/01	11/01	12/01	1/02	2/02	3/02	4/02	5/02	6/02	7/02	8/02	9/02
Maximum activity	0.000122	0.000192	0.000197	0.000141	0.000218	0.000108	0.000203	0.000152	0.000210	0.000171	0.000152	0.000379
Technical specification limit	0.2	0.2	0.2	0.2	0.2	0.2	0.2	0.2	0.2	0.2	0.2	0.2
Indicator value	0.1	0.1	0.1	0.1	0.1	0.1	0.1	0.1	0.1	0.1	0.1	0.2

Reactor Coolant System Activity	10/02	11/02	12/02	1/03	2/03	3/03	4/03	5/03	6/03	7/03	8/03	9/03
Maximum activity	0.000211	0.000065	0.000050	0.000041	0.000055	0.000037	0.000049	0.000031	0.000034	0.000034	0.000038	0.000032
Technical specification limit	0.2	0.2	0.2	0.2	0.2	0.2	0.2	0.2	0.2	0.2	0.2	0.2
Indicator value	0.1	0	0	0	0	0	0	0	0	0	0	0

Licensee Comments: none

Reactor Coolant System Leakage



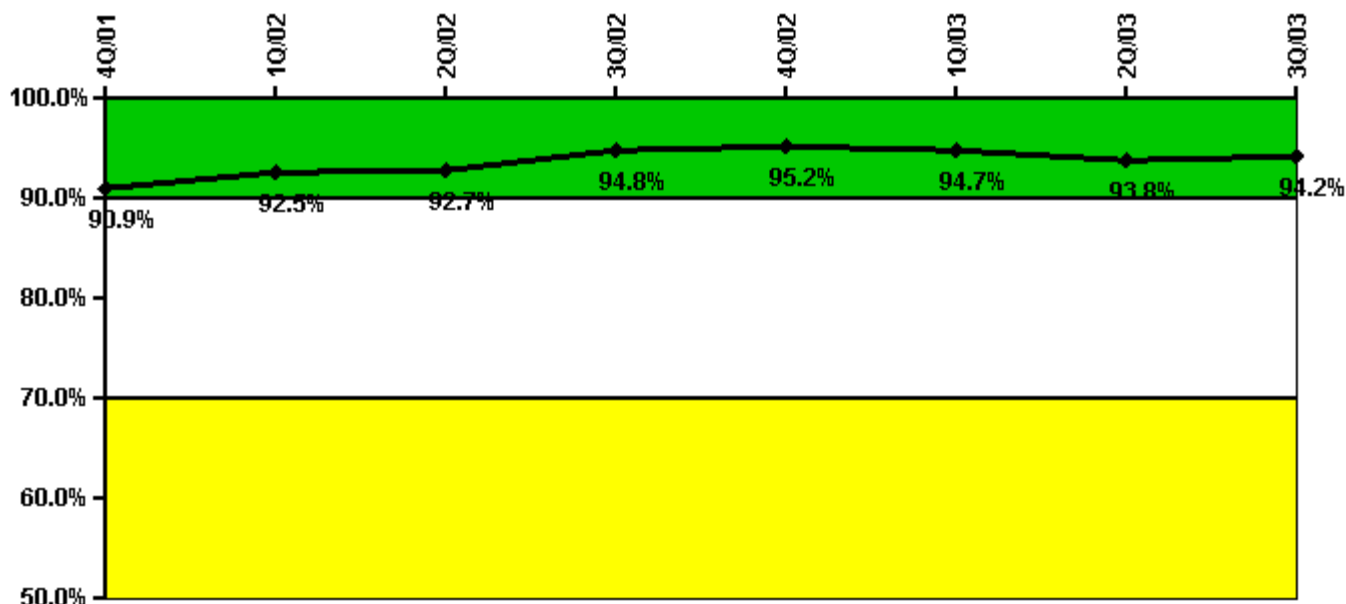
Thresholds: White > 50.0 Yellow > 100.0

Notes

Reactor Coolant System Leakage	10/01	11/01	12/01	1/02	2/02	3/02	4/02	5/02	6/02	7/02	8/02	9/02
Maximum leakage	5.220	5.170	5.150	5.350	5.500	5.470	5.540	5.590	5.750	5.650	5.790	5.720
Technical specification limit	25.0	25.0	25.0	25.0	25.0	25.0	25.0	25.0	25.0	25.0	25.0	25.0
Indicator value	20.9	20.7	20.6	21.4	22.0	21.9	22.2	22.4	23.0	22.6	23.2	22.9
Reactor Coolant System Leakage	10/02	11/02	12/02	1/03	2/03	3/03	4/03	5/03	6/03	7/03	8/03	9/03
Maximum leakage	5.650	4.640	4.520	4.500	4.460	4.550	4.550	4.520	4.480	4.540	4.660	4.630
Technical specification limit	25.0	25.0	25.0	25.0	25.0	25.0	25.0	25.0	25.0	25.0	25.0	25.0
Indicator value	22.6	18.6	18.1	18.0	17.8	18.2	18.2	18.1	17.9	18.2	18.6	18.5

Licensee Comments: none

Drill/Exercise Performance



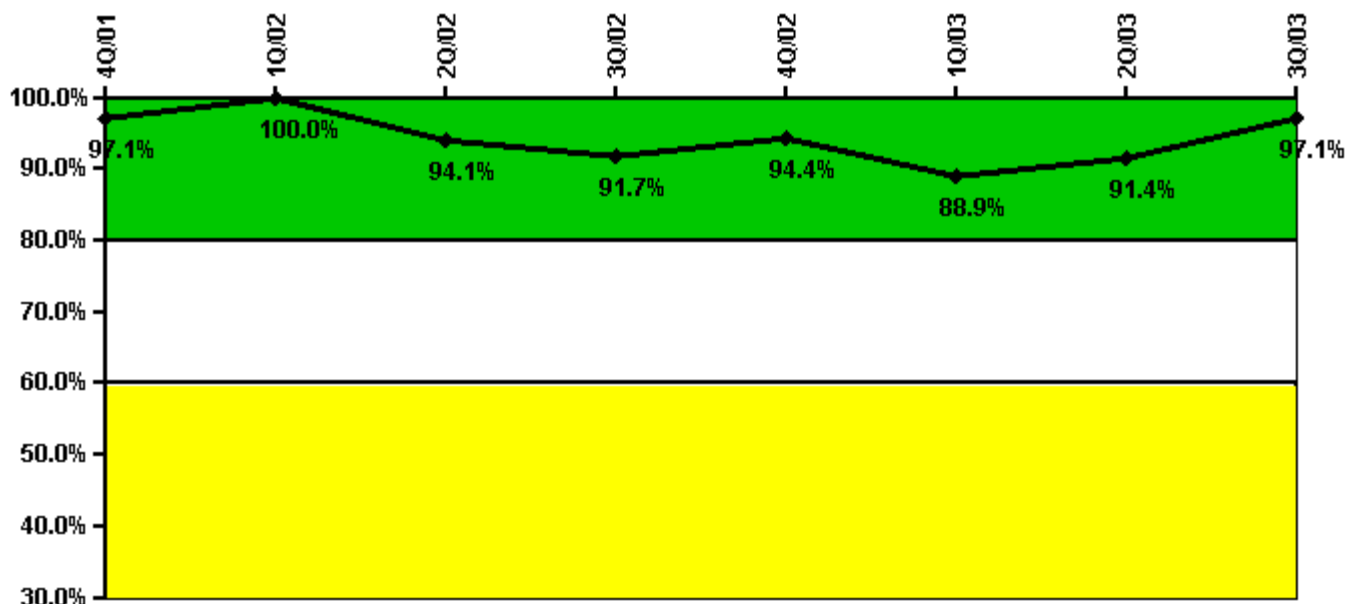
Thresholds: White < 90.0% Yellow < 70.0%

Notes

Drill/Exercise Performance	4Q/01	1Q/02	2Q/02	3Q/02	4Q/02	1Q/03	2Q/03	3Q/03
Successful opportunities	0	14.0	31.0	18.0	8.0	0	7.0	19.0
Total opportunities	0	14.0	35.0	18.0	8.0	0	8.0	20.0
Indicator value	90.9%	92.5%	92.7%	94.8%	95.2%	94.7%	93.8%	94.2%

Licensee Comments: none

ERO Drill Participation



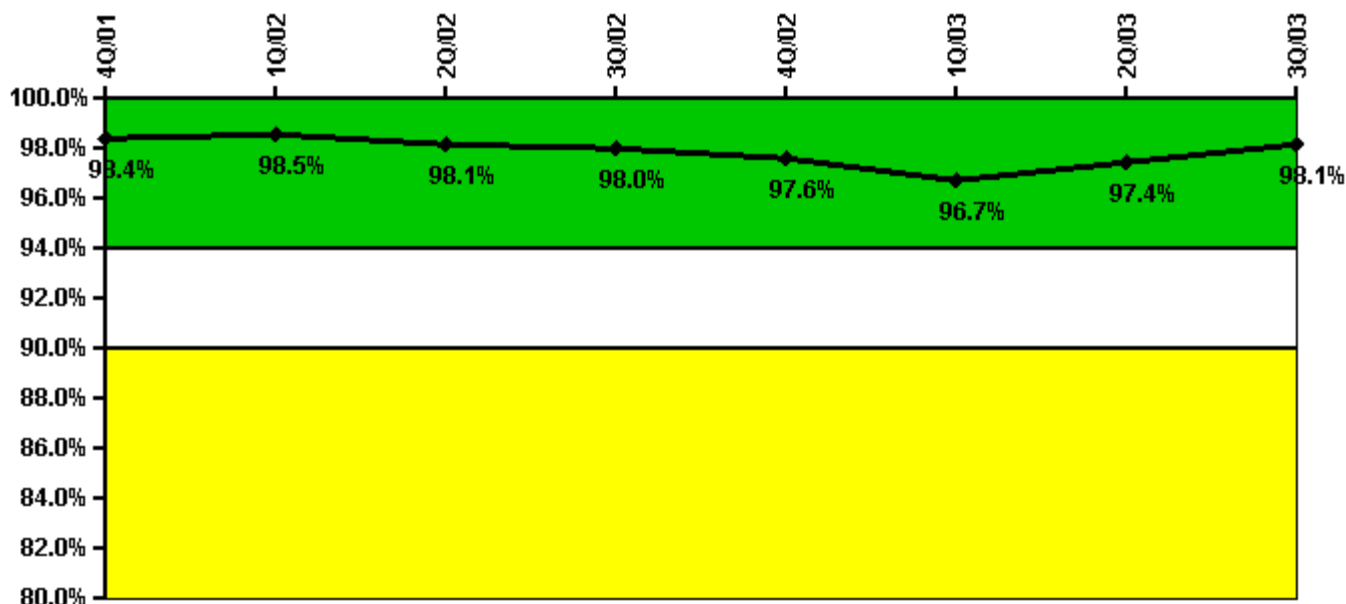
Thresholds: White < 80.0% Yellow < 60.0%

Notes

ERO Drill Participation	4Q/01	1Q/02	2Q/02	3Q/02	4Q/02	1Q/03	2Q/03	3Q/03
Participating Key personnel	33.0	34.0	32.0	33.0	34.0	32.0	32.0	34.0
Total Key personnel	34.0	34.0	34.0	36.0	36.0	36.0	35.0	35.0
Indicator value	97.1%	100.0%	94.1%	91.7%	94.4%	88.9%	91.4%	97.1%

Licensee Comments: none

Alert & Notification System



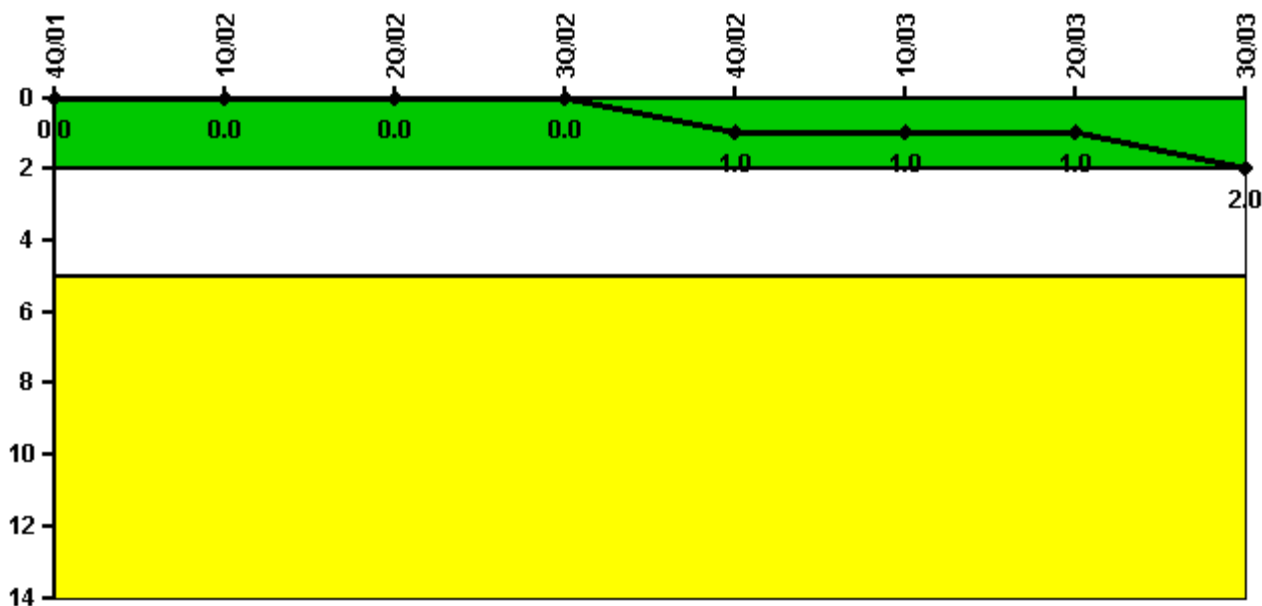
Thresholds: White < 94.0% Yellow < 90.0%

Notes

Alert & Notification System	4Q/01	1Q/02	2Q/02	3Q/02	4Q/02	1Q/03	2Q/03	3Q/03
Successful siren-tests	331	250	284	246	286	240	373	585
Total sirens-tests	336	252	294	252	294	252	378	588
Indicator value	98.4%	98.5%	98.1%	98.0%	97.6%	96.7%	97.4%	98.1%

Licensee Comments: none

Occupational Exposure Control Effectiveness



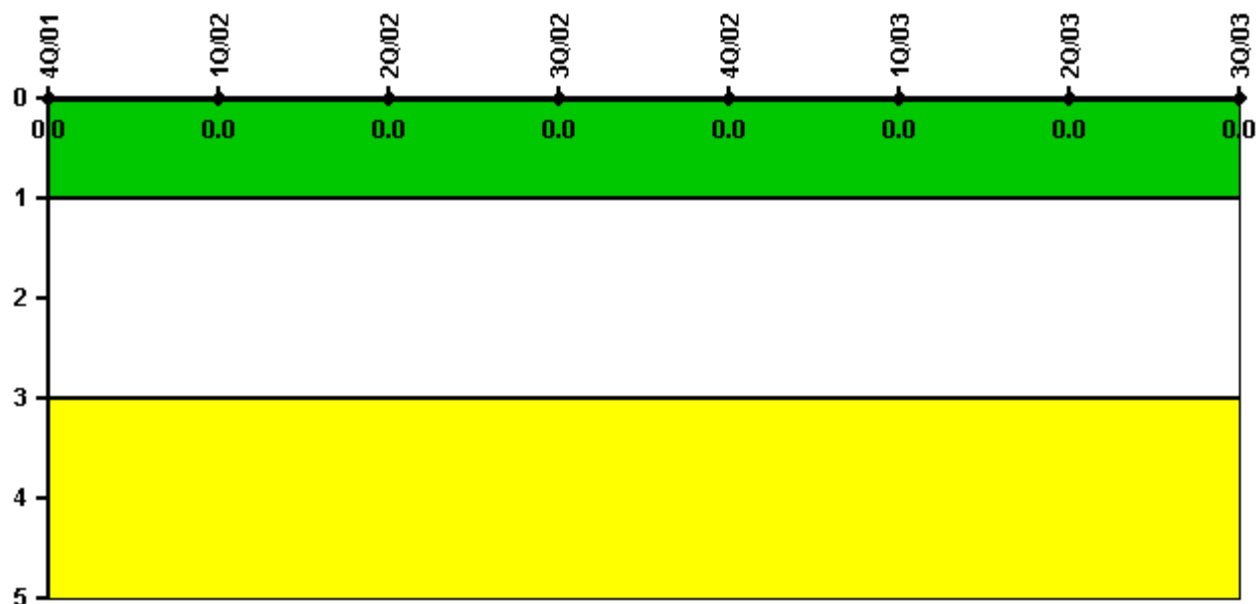
Thresholds: White > 2.0 Yellow > 5.0

Notes

Occupational Exposure Control Effectiveness	4Q/01	1Q/02	2Q/02	3Q/02	4Q/02	1Q/03	2Q/03	3Q/03
High radiation area occurrences	0	0	0	0	0	0	0	1
Very high radiation area occurrences	0	0	0	0	0	0	0	0
Unintended exposure occurrences	0	0	0	0	1	0	0	0
Indicator value	0	0	0	0	1	1	1	2

Licensee Comments: none

RETS/ODCM Radiological Effluent



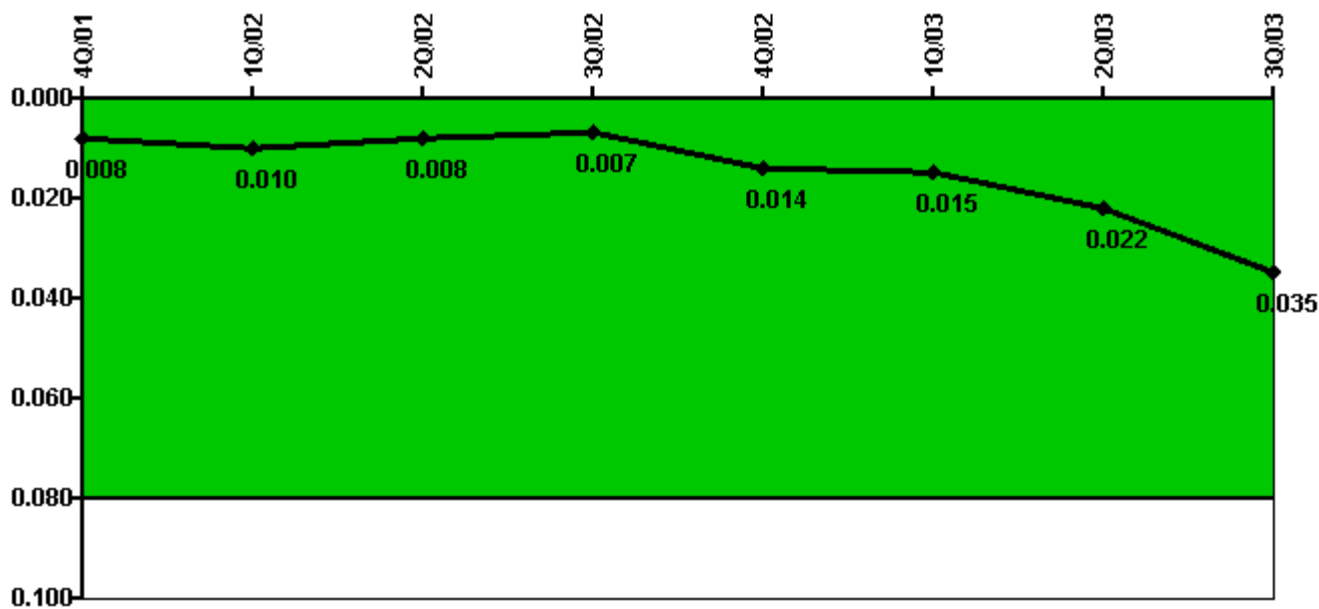
Thresholds: White > 1.0 Yellow > 3.0

Notes

RETS/ODCM Radiological Effluent	4Q/01	1Q/02	2Q/02	3Q/02	4Q/02	1Q/03	2Q/03	3Q/03
RETS/ODCM occurrences	0	0	0	0	0	0	0	0
Indicator value	0	0	0	0	0	0	0	0

Licensee Comments: none

Protected Area Security Performance Index



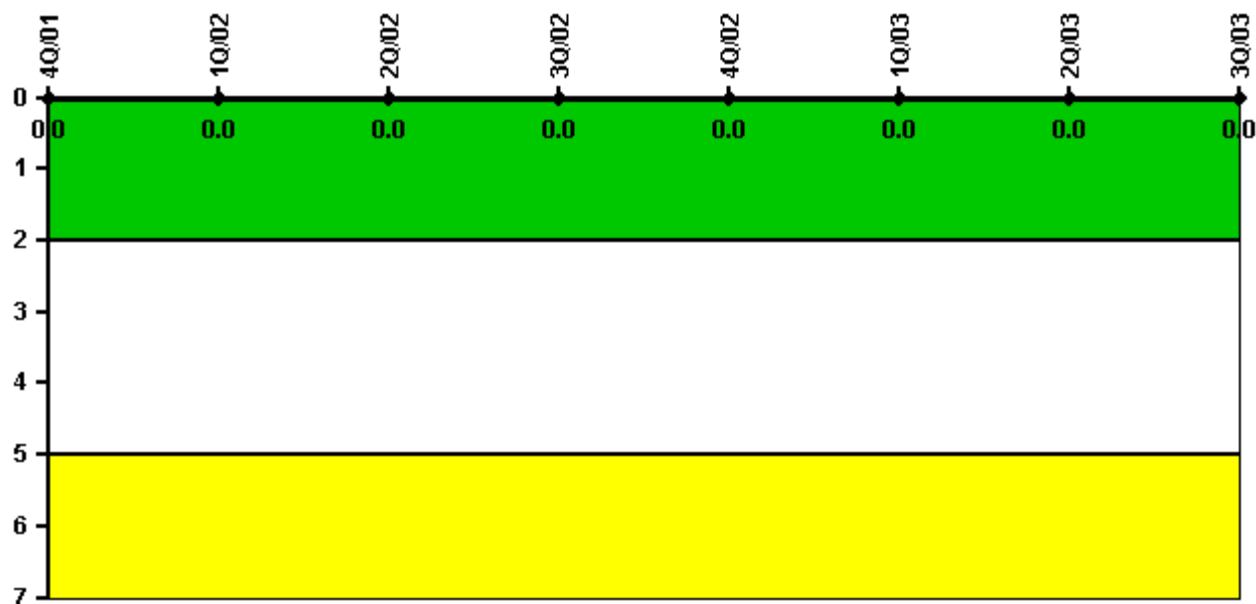
Thresholds: White > 0.080

Notes

Protected Area Security Performance Index	4Q/01	1Q/02	2Q/02	3Q/02	4Q/02	1Q/03	2Q/03	3Q/03
IDS compensatory hours	60.00	46.39	13.10	16.09	193.21	81.14	213.27	278.78
CCTV compensatory hours	59.0	50.1	5.3	2.0	156.6	53.6	50.0	205.2
IDS normalization factor	1.95	1.95	2.15	2.15	2.15	2.15	2.15	2.15
CCTV normalization factor	1.5	1.5	1.8	1.8	1.8	1.8	1.8	1.8
Index Value	0.008	0.010	0.008	0.007	0.014	0.015	0.022	0.035

Licensee Comments: none

Personnel Screening Program



Thresholds: White > 2.0 Yellow > 5.0

Notes

Personnel Screening Program	4Q/01	1Q/02	2Q/02	3Q/02	4Q/02	1Q/03	2Q/03	3Q/03
Program failures	0	0	0	0	0	0	0	0
Indicator value	0	0	0	0	0	0	0	0

Licensee Comments: none

FFD/Personnel Reliability



Thresholds: White > 2.0 Yellow > 5.0

Notes

FFD/Personnel Reliability	4Q/01	1Q/02	2Q/02	3Q/02	4Q/02	1Q/03	2Q/03	3Q/03
Program Failures	0	0	0	0	0	0	0	0
Indicator value	0	0	0	0	0	0	0	0

Licensee Comments: none

▲ [PI Summary](#) | [Inspection Findings Summary](#) | [Reactor Oversight Process](#)

Last Modified: October 22, 2003